

# NAVIGATE @UWL

Spring 2021  
outcomes

## IN SPRING 2021, WE REDESIGNED PRO@UWL (EARLY ALERT)

WE REQUESTED PRO@UWL FEEDBACK FROM SPECIFIC COURSES, NOT ALL COURSES. ALL INSTRUCTORS IN ALL COURSES COULD STILL SUBMIT AD HOC ALERTS THROUGH NAVIGATE.



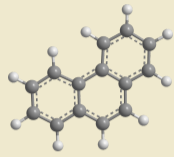
ACC 221  
ACC 222



CS 120



BIO 105  
BIO 203  
BIO 312  
BIO 313



CHM 103  
CHM 104  
CHM 300  
CHM 303  
CHM 304  
CHM 305



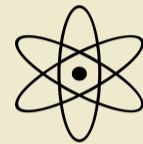
ECO 110  
ECO 120



ENG 110



MTH 051  
MTH 135  
MTH 150  
MTH 151  
MTH 175  
MTH 207  
STAT 145



PHY 103  
PHY 104



PSY 100



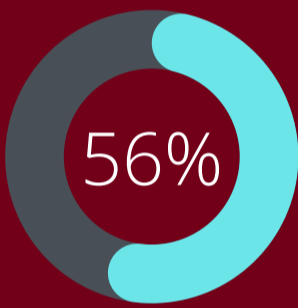
CST 110



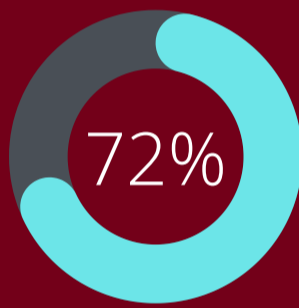
HIS 110

**13,428** requests for feedback sent on course performance for

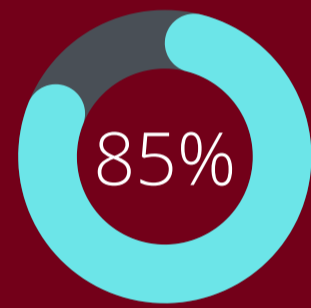
**4,403** students



feedback forms returned



faculty participation  
(n=149)



students received feedback  
(n=4,403)

INSTRUCTORS SUBMITTED FEEDBACK THROUGH PRO@UWL AND ADHOC ALERTS IN BOTH PRO AND NON-PRO CLASSES. ACROSS ALL THESE CHANNELS...

**826**



STUDENTS RECEIVED

**1,210**



ALERTS

### STUDENTS RECEIVED SUPPORT IN DIFFERENT WAYS

SOME STUDENTS RECEIVED MULTIPLE SUPPORTS

**973**

emails sent based on the specific alert reason reported by their instructor, providing them next steps to take. Some students received multiple emails.

**347**

entered the case management process, supported by multiple offices.

**54**

students to Residence Life

**28**

students to Athletics



Students with non-academic concerns or multiple alerts were referred to the Student Life office for support.

ONE GOAL OF GETTING MORE OFFICES INVOLVED WITH PRO@UWL OUTREACH IS TO INCREASE THE NUMBER OF STUDENTS WHO RESPOND TO CASE OUTREACH.

**60%**

of spring 2021 cases closed after student response

compared to

**31%**

in fall 2020