

ADDENDUM NO. 003 (Rev 01/2017)
ISSUE DATE: **04/06/2023**

RE: **WARF SMPH 4th, 5th, 7th FLOOR RENOVATION
UNIVERSITY OF WISCONSIN-MADISON
610 WALNUT STREET
MADISON, WISCONSIN**

UWSA Project No. **A-21-010**
UW- Madison Project No. **0039-2115**

BID OPENING: **MEP Bidders: 2:00 P.M., April 25, 2023**
GPC Bidders: 2:00 P.M., May 09, 2023

FROM: **DESTREE DESIGN ARCHITECTS, INC.**
222 W. Washington Ave. #310
Madison, WI 53703
Phone: (608) 268.1499

TO: Prospective Bidders

This addendum forms a part of the Contract Documents and modifies the original Contract Documents dated **February 01, 2023** as noted below. Acknowledge receipt of this Addendum by inserting the number and issue date of this addendum in the blank space provided on the Bid Form. Failure to do so may subject the Bidder to disqualification.

This Addendum consists of **2 pages** and the attached documents:
Sheet A204, Sheet A205, Sheet A207, Sheet MD107, Sheet ED105, 08 33 44 Overhead Coiling Smoke Curtains for Elevators Doors (4 Pages)

CHANGES TO BIDDING REQUIREMENTS:

1. GPC Instruction to Bidders
 - a. **ADD:** Under section 23. WORK BY THE OWNER, add “Removal of building materials identified as asbestos-containing materials (ACM) that will be disturbed by renovation work. GPC to coordinate with Owner’s vender.”
2. MEP Instruction to Bidders
 - a. **ADD:** Under section 23. WORK BY THE OWNER, add “Removal of building materials identified as asbestos-containing materials (ACM) that will be disturbed by renovation work. GPC to coordinate with Owner’s vender.”

CHANGES TO CONDITIONS OF THE CONTRACT:

1. **DIVISION 1 GENERAL REQUIREMENTS MEP & GPC Specifications**
 - a. **REPLACE:** Replace all text under heading “5. HAZARDOUS SUBSTANCES – ASBESTOS, LEAD AND POLYCHLORINATED BIPHENYL’S (PCB’S)” Page GR-5, line 44 thru line 22 on page GR-6, with “GPC to coordinate and schedule a meeting to discuss with the owner’s abatement contractor plans for removal. GPC to schedule downtime for abatement or access to floor.”

CHANGES TO SPECIFICATIONS (DIVISIONS 2 THRU 33):

1. **REMOVE:** Remove section 02 08 13 from the specifications.
2. **ADD:** Add section 08 33 43 Overhead Coiling Smoke Curtains for Elevators Doors.

CHANGES TO DRAWINGS:

1. **ADD:** On sheet A204 coiling smoke doors have been added above each elevator door. See attached sheet A204.
2. **ADD:** On sheet A205 coiling smoke doors have been added above each elevator door. See attached sheet A205.
3. **ADD:** On sheet A207 coiling smoke doors have been added above each elevator door. See attached sheet A207.
4. **REPLACE:** Replace sheet PD107 in the Mechanical Section of the drawing set with missing sheet MD107.
5. **REPLACE:** Replace sheet ES105 in the Electrical Demo Section of the drawing set with missing sheet ED105.
6. **REMOVE:** Remove sheets H104, H105, H106, & H107 from the drawing set that were previously added per Addendum 1. All Asbestos abatement work to be performed under a separate contract.
7. **REVISE:** On Sheet ES107 Revise Note 12 to read ‘SURFACE MOUNTED CARD READER. WIREMOLD SURFACE MOUNTED RACEWAY ALLOWED AT THIS LOCATION ONLY. CARD READER TO BE CONTROLLED FROM NEW ACCESS CONTROL PANEL LOCATED IN ELEC/IT 884.’
8. **REVISE:** On sheet PD104 revise General Note 2 to read “PRIOR TO REMOVAL, MEP CONTRACTORS TO MARK ANY FITTINGS OR OTHER POTENTIAL ASBESTOS CONTAINING MATERIALS FOR REMOVAL. INFORM GPC IMMEDIATELY.”
9. **REVISE:** On sheet PD105 revise General Note 2 to read “PRIOR TO REMOVAL, MEP CONTRACTORS TO MARK ANY FITTINGS OR OTHER POTENTIAL ASBESTOS CONTAINING MATERIALS REMOVAL. INFORM GPC IMMEDIATELY.”
10. **REVISE:** On sheet PD107 revise General Note 2 to read “PRIOR TO REMOVAL, MEP CONTRACTORS TO MARK ANY FITTINGS OR OTHER POTENTIAL ASBESTOS CONTAINING MATERIAL REMOVAL. INFORM GPC IMMEDIATELY.”
11. **REVISE:** On sheet MD104 revise General Note 2 to read “PRIOR TO REMOVAL, MEP CONTRACTORS TO MARK ANY FITTINGS OR OTHER POTENTIAL ASBESTOS CONTAINING MATERIALS FOR REMOVAL. INFORM GPC IMMEDIATELY.”
12. **REVISE:** On sheet MD105 revise General Note 2 to read “PRIOR TO REMOVAL, MEP CONTRACTORS TO MARK ANY FITTINGS OR OTHER POTENTIAL ASBESTOS CONTAINING MATERIALS FOR REMOVAL. INFORM GPC IMMEDIATELY.”
13. **ADD:** On sheet MD107 revise General Note 2 to read “PRIOR TO REMOVAL, MEP CONTRACTORS TO MARK ANY FITTINGS OR OTHER POTENTIAL ASBESTOS CONTAINING MATERIALS FOR REMOVAL. INFORM GPC IMMEDIATELY.”

GENERAL QUESTIONS/CLARIFICATIONS:

1. All building materials identified as asbestos-containing materials (ACM) that will be disturbed by renovation work to be removed by the owner’s abatement contractor. This work is to be performed under a separate contract. GPC to coordinated with the abatement contractor

END OF ADDENDUM

DESTREE DESIGN ARCHITECTS, INC.
222 W. Washington Ave. #310
Madison, WI 53703
Phone: (608) 268.1499

The University of Wisconsin - Madison
1860 Van Hise Hall, 1220 Linden Drive
Madison, Wisconsin 53706

1
2

**SECTION 08 33 43
OVERHEAD COILING SMOKE CURTAINS FOR ELEVATOR DOORS**

3

PART 1 – GENERAL

4

SCOPE

5 Section Includes:
6 Overhead Coiling Smoke Curtains for Elevator Doors.

7
8

PART 1 – GENERAL

9 Scope
10 Related Work
11 Submittals
12 Quality Assurance

13
14

PART 2 – PRODUCTS

15 Smoke-Protective Curtain Assemblies for Elevator Entrances

16
17

PART 3 – EXECUTION

18 Examination
19 Preparation
20 Installation
21 Cleaning & Protection
22 Field Quality Control
23 Demonstration

24
25

RELATED WORK

26 Drawings and general provisions of the Contract, including General and Supplementary Conditions and Division 01
27 Specification Sections, apply to this Section.

28
29

SUBMITTALS

30 Provide Submittals in accordance with General Conditions and as follows.

31 Product Data: Manufacturer's product information and data sheets for each product specified in this section,
32 including:

33 Substrate preparation instructions and recommendations.
34 Installation means and methods.
35 Recommendations and requirements for proper storage and handling.

36
37 Shop Drawings: Submit Manufacturer's approved shop drawings detailing the section and elevation views of each
38 product to be installed. Indicate location, size; construction details; and other pertinent data.

39
40 Warranty Info: Submit confirmation and details of manufacturer's warranty, extended warranty, and
41 replacement policies.

42
43 Record Documents: Operation and Maintenance Data: For smoke-protective curtain assemblies to include in
44 emergency, operation, and maintenance manuals. Field quality-control reports for required testing.

45
46

QUALITY ASSURANCE

47 Qualifications:

48 Manufacturer: Minimum of seven (7) years experience in manufacturing draft-control curtain assemblies at a
49 facility in the United States that have been successfully installed in compliance with requirements of authorities
50 having jurisdiction.

51 Installers: An entity that employs installers and supervisors who are trained and approved by manufacturer
52 for both installation and maintenance of units required for this Project.

1
2
3 **PART 2 – PRODUCTS**

4 **SMOKE-PROTECTIVE CURTAIN ASSEMBLIES FOR ELEVATOR ENTRANCES**

5 Subject to compliance with requirements, provide Basis-Of-Design project listed below or comparable product by one of
6 the following:

- 7 CSW Industrials Company
- 8 Door Systems
- 9 Monderfold Styles

10 Basis of Design Product: As indicated in the Construction Drawings,: Basis of Design Product: Model 200, by Smoke
11 Guard, a CSW Industrials Company.

12
13 Basis of Design Specifications:

14 Smoke-Protective Curtain Assemblies: Provide smoke-protective curtains listed and labeled with the letter "S"
15 by a qualified testing agency for smoke- and draft-control based on testing in accordance with UL 1784 without
16 an artificial bottom seal; with maximum air-leakage rate of 3.0 cfm/sq. ft. (0.01524 cu. m/s x sq. m) of opening
17 at 0.10 inch wg (24.9 Pa) for both ambient and elevated temperature tests in accordance with ICC-ES AC77.

18 Curtain Materials: Provide manufacturer's standard curtain complying with each of the following:

19 Flame-Spread and Smoke-Developed Indexes: No greater than 25 and 50, respectively, when tested in
20 accordance with ASTM E84.

21 Transparent-Film Curtain: Provide curtain of transparent film in compliance with vision panel requirements of
22 ASME A17.1.

23 Screen Reinforcement: Provide film with reinforcement to limit deflection or tearing.

24 Curtain Egress: Provide curtain that is operable from the egress side without use of keys, tools, special
25 knowledge, or effort in excess of the opening force requirements of authorities having jurisdiction.

26 Egress Switch: Include switch to rewind screen into housing to comply with egress requirements of
27 ASME A17.1.

28 Switch Size and Color: Provide switch no less than 4 by 4 inches and in contrasting color with curtain.

29 Switch Operation: Provide switch operable with a closed fist or a loose grip, not requiring finger
30 movements in compliance with the requirements of authorities having jurisdiction.

31 Switch Location: Between 15 and 48 inches above finished floor level in compliance with forward
32 reach requirements of authorities having jurisdiction.

33 Manual Egress: Provide curtain allowing fail-safe manual egress with less than 15 pounds release
34 pressure in the direction of travel.

35 Opening Size: Provide curtain with manual egress opening of at least 32 inches in compliance with
36 the requirements of authorities having jurisdiction.

37 Curtain Attachment: Provide curtain that forms a pressure-resisting seal by magnetic adhesion with flexible
38 multi-pole magnetic strips attached to longitudinal edges of film with low modulus silicone adhesive.

39 Curtain Installation: Provide curtain attachment systems that do not require modification of the
40 elevator jamb including direct or mechanical attachment.

41 Elevator Door Frames: Type 430 ferritic stainless steel elevator door frames to create seal with
42 curtain by magnetic adhesion.

43 Auxiliary Rails: Provide 16-gauge ASTM A240/240M, Type 430, ferritic stainless steel
44 vertical rails above elevator door head to create seal with curtain by magnetic adhesion no
45 less than 2 inches (51 mm) wide, 1 inch (25 mm) deep.

46 Auxiliary Rails: Provide vertical rails to create seal with curtain by magnetic adhesion.

47 Material: 16-gauge ASTM A240/240M, Type 430, ferritic stainless steel.

48 Size: At least 2 inches (51 mm) wide, 1 inch (25 mm) deep.

1 Electrical Components, Devices, and Accessories: Listed and labeled as defined in NFPA 70, by a qualified
2 testing agency, and marked for intended location and application.
3 Curtain Housing: Provide sheet metal housings containing support rollers and associated electronics.
4 Coordinate operator wiring requirements and electrical characteristics with building electrical
5 system.
6 Housing includes electrical junction box that does require the removal of any part of the building in
7 accordance with NFPA 70.
8 Provide electrical junction box access through housing in the open condition.
9 Curtain housing to contain all components required for operation.
10 Housing Finish: Manufacturer's standard powder coat finish in custom RAL color.
11
12 Curtain Operation: Controlled descent automatically by fail-safe, gravity-closing deployment and motorized
13 rewind.
14 Curtain deploys on activation of one of the following:
15 Local Smoke Detector.
16 Building Fire Alarm.
17 Testing Key Switch
18 Release Mechanism: Labelled as defined by UL864.
19

20 PART 3 – EXECUTION

21 EXAMINATION

22 Examine substrates upon which work will be installed.
23 Verify related work performed under other sections is complete and in accordance with Shop Drawings.
24 Verify wall surfaces and elevator door frames are acceptable for installation of smoke containment system
25 components.
26 Coordinate with responsible entity to perform corrective work on unsatisfactory substrates.
27 Proceed with installation only after unsatisfactory conditions have been corrected.
28 Verify that locations of concealed reinforcements have been clearly marked for the installer.
29 Locate reinforcement points and clearly mark their locations if not already done.
30

31 PREPARATION

32 Clean surfaces prior to installation.
33 Prepare surfaces as recommended by the manufacturer for achieving optimal results.
34

35 INSTALLATION

36 Install in accordance with manufacturer's current installation instructions and industry recognized best practices.
37 Install in accordance with all code bodies having jurisdiction.
38

39 CLEANING AND PROTECTION

40 Clean and remove all stains, grime, or other soils using soap and water. Only use detergents approved by the
41 manufacturer for use on the finishes specified. Do not use acid solutions, steel wool, and other harsh abrasives.
42 Damaged products must be repaired or replaced prior to substantial completion.
43 Protect installed products until completion of work specified in this section.
44

45 FIELD QUALITY CONTROL

46 Field Test: Follow manufacturer's cycle test procedures.
47 Notify Owner's Representative, local Fire Marshal, alarm sub-contractor and elevator sub-contractor or service
48 company minimum one week in advance of scheduled testing.
49 Complete maintenance service record.
50

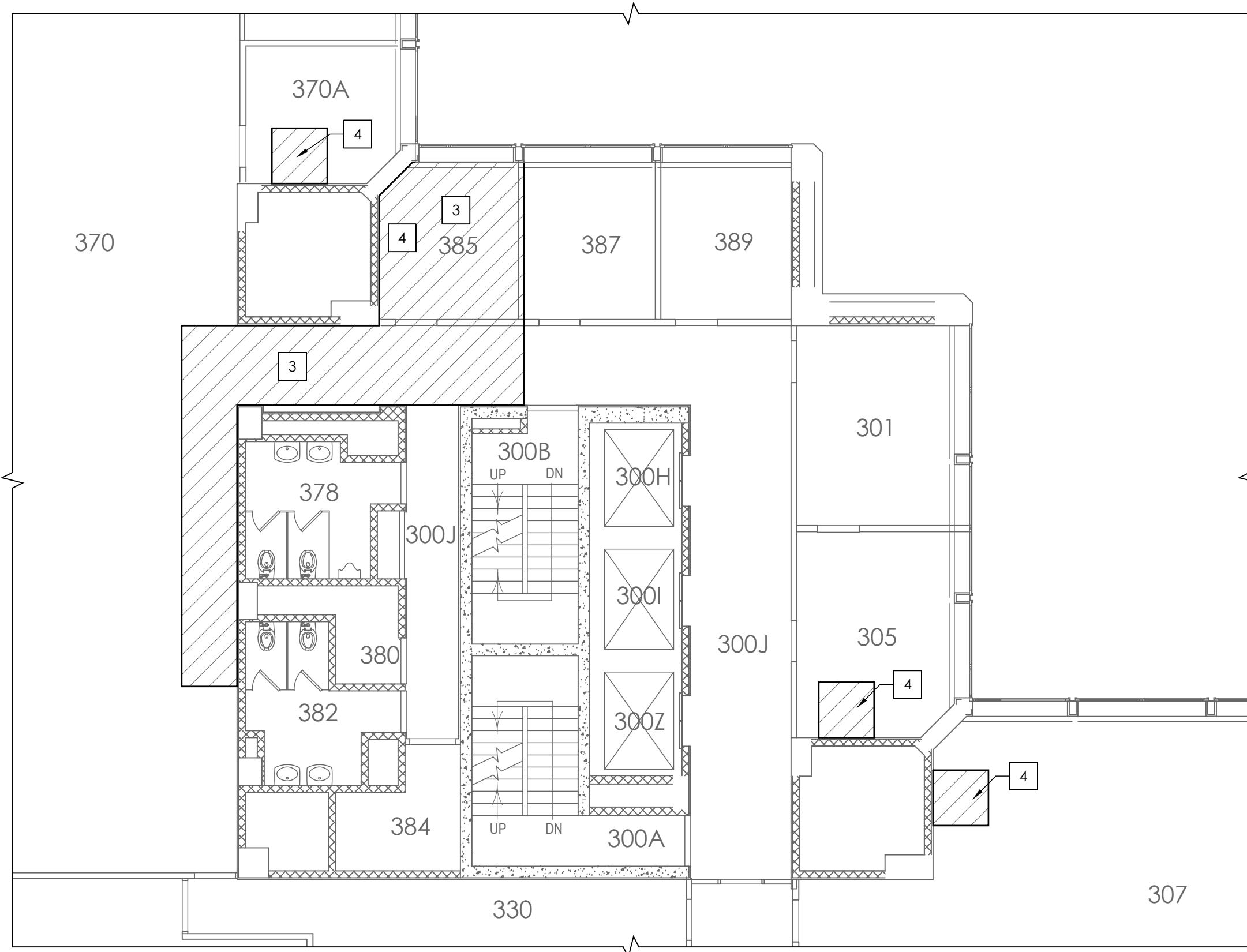
51 DEMONSTRATION

52 Demonstrate required testing and maintenance procedures to Owner's Representative.

- 1 Maintenance and Testing
- 2 Perform minimum semi-annual maintenance and testing on each smoke containment system as required by the
- 3 manufacturer's warranty, code agency evaluation reports, and as required by local authority having jurisdiction.
- 4 Retain permanent record of tests.
- 5 Future Painting: Paint elevator door frame and/or auxiliary rails in accordance with Operation and Maintenance
- 6 Manual.
- 7 Fire Event: Owner shall engage a qualified inspector to assess unit(s) after exposure to a fire event.

8
9

END OF SECTION



2 3RD FLOOR REFLECTED CEILING PLAN
1/8" = 1'-0"



1 4TH FLOOR REFLECTED CEILING PLAN
3/16" = 1'-0"

GENERAL RCP NOTES

1. SEE TITLE SHEET FOR ADDITIONAL PROJECT NOTES & SHEET INDEX.
2. REFLECTED CEILING PLAN IS FOR LAYOUT PURPOSES ONLY, COORDINATE FINAL LOCATIONS WITH ALL DISCIPLINES.
3. ALL CEILING GRIDS SHALL BE CENTERED IN SPACE AS SHOWN (UNO).
4. CENTER ALL LIGHT FIXTURES, OCCUPANCY SENSORS, SPRINKLER HEADS, ETC. IN CEILING TILE (UNO).
5. SEE ELECTRICAL SHEETS FOR ELECTRICAL & LIGHTING INFORMATION.
6. SEE FIRE SUPPRESSION SHEETS FOR SPRINKLER SYSTEM INFORMATION.
7. SEE MECHANICAL SHEETS FOR MECHANICAL INFORMATION.
8. SEE PLUMBING SHEETS FOR PLUMBING INFORMATION.

KEYNOTES

- 1 XTG WINDOW HEAD SOFFIT PAINTED PT-3
- 2 NEW 18"x18" MTL ACCESS PANEL PAINTED PT-3, COORDINATE FINAL LOCATION WITH MEP DRAWINGS.
- 3 REMOVE AND REINSTALL XTG ACT CEILING AS REQUIRED FOR PLUMBING ACCESS. SEE PLUMBING DRAWINGS. (3RD AND 6TH FLOOR RCP ONLY)
- 4 REMOVE AND REINSTALL XTG ACT CEILING AS REQUIRED FOR MECHANICAL ACCESS. SEE MECHANICAL DRAWINGS. (3RD AND 6TH FLOOR RCP ONLY)
- 5 REINFORCE CEILING FOR TOILET PARTITION, SEE SHEET A104, A105, AND A107
- 6 ABATEMENT CONTRACTOR TO REMOVE AND REINSTALL XTG ACT CEILING IN ROOM AS REQUIRED FOR MECHANICAL AND PLUMBING ACCESS. SEE ABATEMENT, MECHANICAL AND PLUMBING DRAWINGS (6TH FLOOR RCP ONLY).

RCP LEGEND

- 2x2 RECESSED LIGHT FIXTURES - SEE ELECTRICAL PLANS
- 4" LED WALL WASHERS - SEE ELECTRICAL PLANS
- LED DOWN LIGHTS - SEE ELECTRICAL PLANS
- LED WALL SCONCE MOUNTED 7'-0" AFF TO CENTER OF FIXTURE - SEE ELECTRICAL PLANS
- LED PENDANT LIGHT, 6'-8" AFF TO THE BOTTOM OF FIXTURE - SEE ELECTRICAL PLANS
- LED PENDANT RING LIGHT, 7'-10" AFF TO THE BOTTOM OF FIXTURE - SEE ELECTRICAL PLANS
- LED STRIP LIGHT - SEE ELECTRICAL PLANS
- SMOKE DETECTOR - SEE ELECTRICAL PLANS
- HEAT DETECTOR - SEE ELECTRICAL PLANS
- SPEAKER/STROBE - SEE ELECTRICAL PLANS
- OCCUPANCY SENSOR - SEE ELECTRICAL PLANS
- VACANCY SENSOR - SEE ELECTRICAL PLANS
- WIRELESS ACCESS POINT - SEE ELECTRICAL PLANS
- CEILING MOUNTED EXIT SIGN - SEE ELECTRICAL PLANS
- CAMERA - SEE ELECTRICAL PLANS
- POWER POLL - SEE ELECTRICAL PLANS
- 2X2 HVAC SUPPLY DIFFUSER - SEE HVAC PLANS
- 2X2 HVAC RETURN DIFFUSER - SEE HVAC PLANS
- HVAC EXHAUST GRILLE - SEE HVAC PLANS
- SPRINKLER HEADS - SEE FIRE PROTECTION PLANS
- GWS PAINTED PT-3
- SUSPENDED ACOUSTIC CEILING TILE SYSTEM ACT-1

Revisions:	No.	Date	Description
	1	04/06/23	ADDENDUM #3

Graphic Scale	AS SHOWN
PRJ. Number	UW: MSN 0039-2115
	UWSA: A-21-010
Set Type	BD
Date Issued	02/01/2023
Sheet Number	A204

Revisions:	No.	Date	Description
	1	04/08/23	ADDENDUM #3

Graphic Scale	0" 1" 2" 4" 6" 8"
PRJ. Number	UW: MSN 0039-2115 UWSA: A-21-010
Set Type	BD
Date Issued	02/01/2023
Sheet Number	A205

GENERAL RCP NOTES

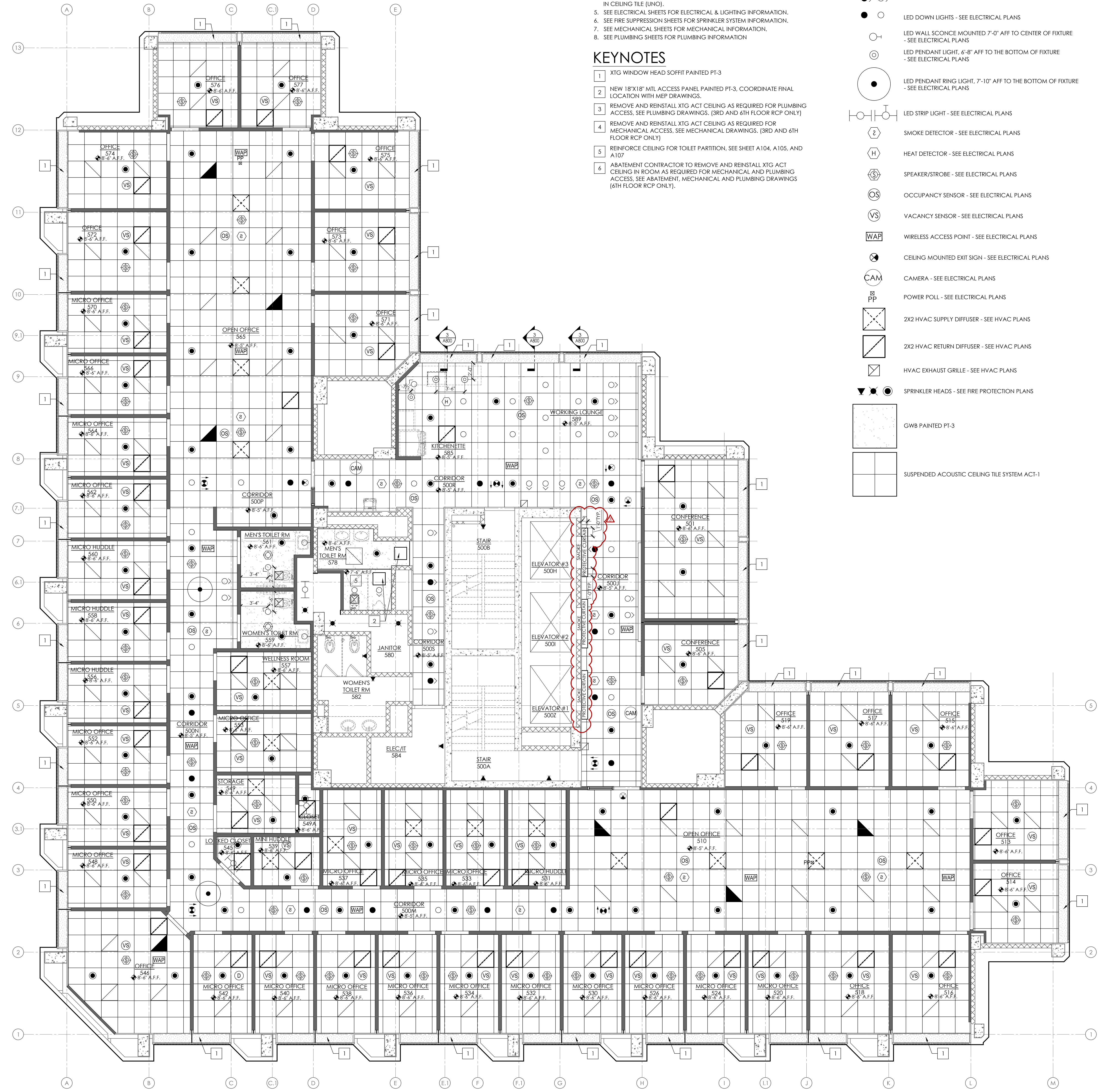
- SEE TITLE SHEET FOR ADDITIONAL PROJECT NOTES & SHEET INDEX.
- REFLECTED CEILING PLAN IS FOR LAYOUT PURPOSES ONLY. COORDINATE FINAL LOCATIONS WITH ALL DISCIPLINES.
- ALL CEILING GRIDS SHALL BE CENTERED IN SPACE AS SHOWN (UNO).
- CENTER ALL LIGHT FIXTURES, OCCUPANCY SENSORS, SPRINKLER HEADS, ETC. IN CEILING TILE (UNO).
- SEE ELECTRICAL SHEETS FOR ELECTRICAL & LIGHTING INFORMATION.
- SEE FIRE SUPPRESSION SHEETS FOR SPRINKLER SYSTEM INFORMATION.
- SEE MECHANICAL SHEETS FOR MECHANICAL INFORMATION.
- SEE PLUMBING SHEETS FOR PLUMBING INFORMATION.

KEYNOTES

- XTG WINDOW HEAD SOFFIT PAINTED PT-3
- NEW 18"X18" MTL ACCESS PANEL PAINTED PT-3. COORDINATE FINAL LOCATION WITH MEP DRAWINGS.
- REMOVE AND REINSTALL XTG ACT CEILING AS REQUIRED FOR PLUMBING ACCESS. SEE PLUMBING DRAWINGS. (3RD AND 6TH FLOOR RCP ONLY)
- REMOVE AND REINSTALL XTG ACT CEILING AS REQUIRED FOR MECHANICAL ACCESS. SEE MECHANICAL DRAWINGS. (3RD AND 6TH FLOOR RCP ONLY)
- REINFORCE CEILING FOR TOILET PARTITION. SEE SHEET A104, A105, AND A107
- ABATEMENT CONTRACTOR TO REMOVE AND REINSTALL XTG ACT CEILING IN ROOM AS REQUIRED FOR MECHANICAL AND PLUMBING ACCESS. SEE ABATEMENT, MECHANICAL AND PLUMBING DRAWINGS (6TH FLOOR RCP ONLY).

RCP LEGEND

- 2x2 RECESSED LIGHT FIXTURES - SEE ELECTRICAL PLANS
- 4" LED WALL WASHERS - SEE ELECTRICAL PLANS
- LED DOWN LIGHTS - SEE ELECTRICAL PLANS
- LED WALL SCONCE MOUNTED 7'-0" AFF TO CENTER OF FIXTURE - SEE ELECTRICAL PLANS
- LED PENDANT LIGHT, 6'-8" AFF TO THE BOTTOM OF FIXTURE - SEE ELECTRICAL PLANS
- LED PENDANT RING LIGHT, 7'-10" AFF TO THE BOTTOM OF FIXTURE - SEE ELECTRICAL PLANS
- LED STRIP LIGHT - SEE ELECTRICAL PLANS
- SMOKE DETECTOR - SEE ELECTRICAL PLANS
- HEAT DETECTOR - SEE ELECTRICAL PLANS
- SPEAKER/STROBE - SEE ELECTRICAL PLANS
- OCCUPANCY SENSOR - SEE ELECTRICAL PLANS
- VACANCY SENSOR - SEE ELECTRICAL PLANS
- WIRELESS ACCESS POINT - SEE ELECTRICAL PLANS
- CEILING MOUNTED EXIT SIGN - SEE ELECTRICAL PLANS
- CAMERA - SEE ELECTRICAL PLANS
- POWER POLL - SEE ELECTRICAL PLANS
- 2X2 HVAC SUPPLY DIFFUSER - SEE HVAC PLANS
- 2X2 HVAC RETURN DIFFUSER - SEE HVAC PLANS
- HVAC EXHAUST GRILLE - SEE HVAC PLANS
- SPRINKLER HEADS - SEE FIRE PROTECTION PLANS
- GWB PAINTED PT-3
- SUSPENDED ACOUSTIC CEILING TILE SYSTEM ACT-1



5TH FLOOR REFLECTED CEILING PLAN
3/16" = 1'-0"

GENERAL RCP NOTES

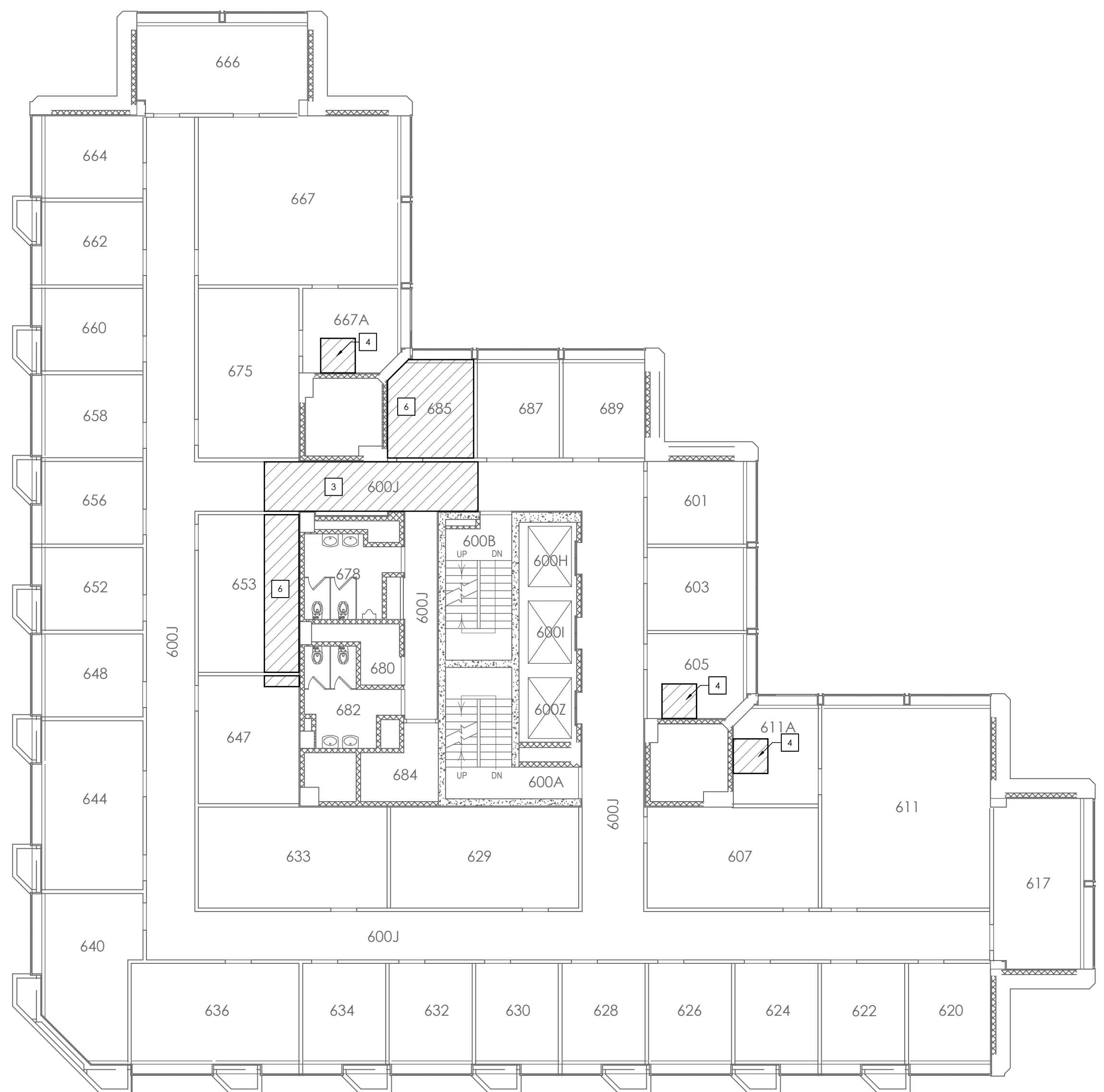
- SEE TITLE SHEET FOR ADDITIONAL PROJECT NOTES & SHEET INDEX.
- REFLECTED CEILING PLAN IS FOR LAYOUT PURPOSES ONLY. COORDINATE FINAL LOCATIONS WITH ALL DISCIPLINES.
- ALL CEILING GRIDS SHALL BE CENTERED IN SPACE AS SHOWN (UNO).
- CENTER ALL LIGHT FIXTURES, OCCUPANCY SENSORS, SPRINKLER HEADS, ETC. IN CEILING TILE (UNO).
- SEE ELECTRICAL SHEETS FOR ELECTRICAL & LIGHTING INFORMATION.
- SEE FIRE SUPPRESSION SHEETS FOR SPRINKLER SYSTEM INFORMATION.
- SEE MECHANICAL SHEETS FOR MECHANICAL INFORMATION.
- SEE PLUMBING SHEETS FOR PLUMBING INFORMATION.

KEYNOTES

- XTG WINDOW HEAD SOFFIT PAINTED PT-3
- NEW 18"x18" MTL ACCESS PANEL PAINTED PT-3. COORDINATE FINAL LOCATION WITH MEP DRAWINGS.
- REMOVE AND REINSTALL XTG ACT CEILING AS REQUIRED FOR PLUMBING ACCESS. SEE PLUMBING DRAWINGS. (3RD AND 6TH FLOOR RCP ONLY)
- REMOVE AND REINSTALL XTG ACT CEILING AS REQUIRED FOR MECHANICAL ACCESS. SEE MECHANICAL DRAWINGS. (3RD AND 6TH FLOOR RCP ONLY)
- REINFORCE CEILING FOR TOILET PARTITION. SEE SHEET A104, A105, AND A107
- ABATEMENT CONTRACTOR TO REMOVE AND REINSTALL XTG ACT CEILING IN ROOM AS REQUIRED FOR MECHANICAL AND PLUMBING ACCESS. SEE ABATEMENT, MECHANICAL AND PLUMBING DRAWINGS (6TH FLOOR RCP ONLY).

RCP LEGEND

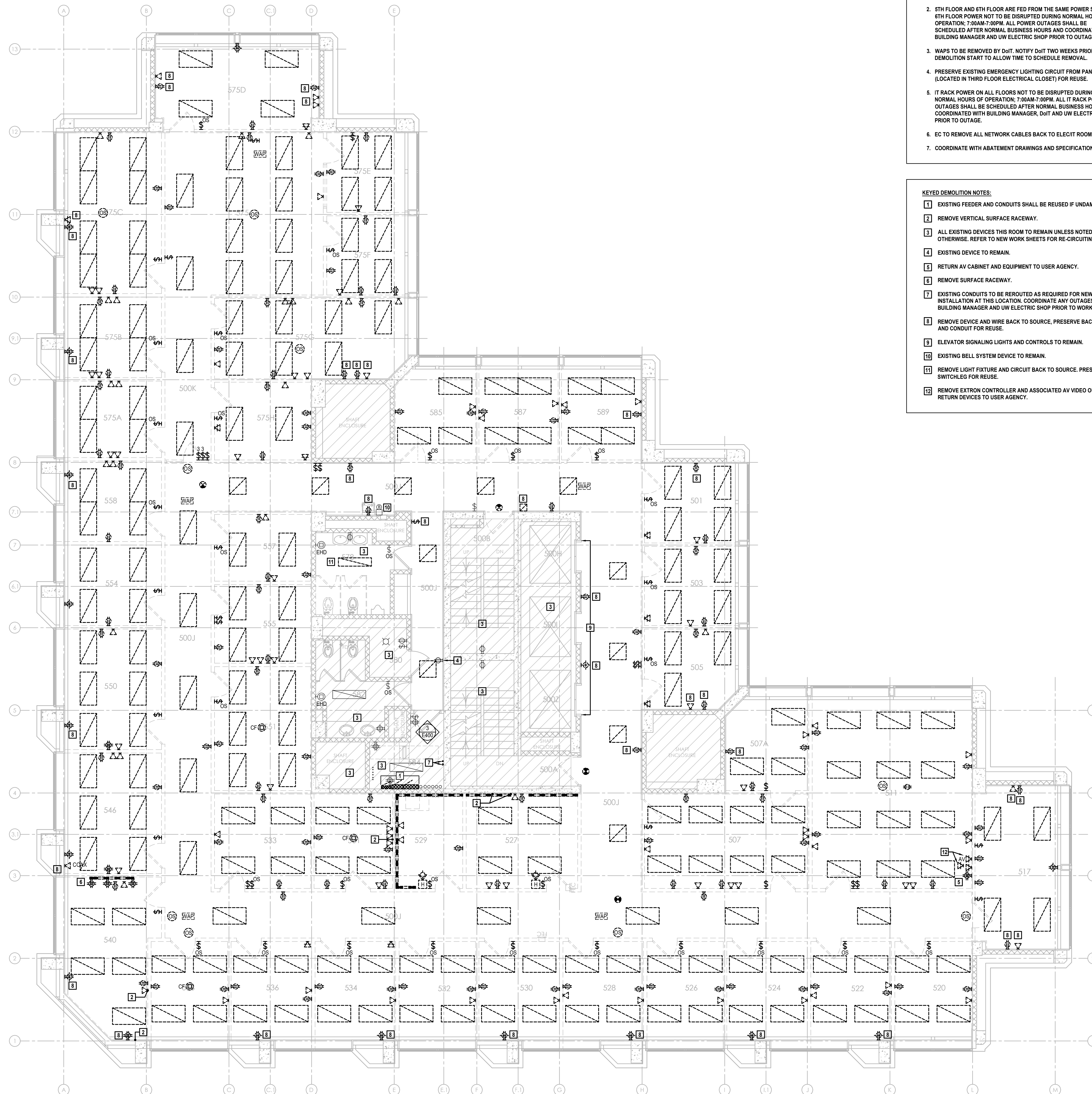
- 2x2 RECESSED LIGHT FIXTURES - SEE ELECTRICAL PLANS
- 4" LED WALL WASHERS - SEE ELECTRICAL PLANS
- LED DOWN LIGHTS - SEE ELECTRICAL PLANS
- LED WALL SCONCE MOUNTED 7'-0" AFF TO CENTER OF FIXTURE - SEE ELECTRICAL PLANS
- LED PENDANT LIGHT, 6'-8" AFF TO THE BOTTOM OF FIXTURE - SEE ELECTRICAL PLANS
- LED PENDANT LIGHT, 7'-10" AFF TO THE BOTTOM OF FIXTURE - SEE ELECTRICAL PLANS
- LED STRIP LIGHT - SEE ELECTRICAL PLANS
- SMOKE DETECTOR - SEE ELECTRICAL PLANS
- HEAT DETECTOR - SEE ELECTRICAL PLANS
- SPEAKER/STROBE - SEE ELECTRICAL PLANS
- OCCUPANCY SENSOR - SEE ELECTRICAL PLANS
- VACANCY SENSOR - SEE ELECTRICAL PLANS
- WIRELESS ACCESS POINT - SEE ELECTRICAL PLANS
- CEILING MOUNTED EXIT SIGN - SEE ELECTRICAL PLANS
- CAMERA - SEE ELECTRICAL PLANS
- POWER POLL - SEE ELECTRICAL PLANS
- 2X2 HVAC SUPPLY DIFFUSER - SEE HVAC PLANS
- 2X2 HVAC RETURN DIFFUSER - SEE HVAC PLANS
- HVAC EXHAUST GRILLE - SEE HVAC PLANS
- SPRINKLER HEADS - SEE FIRE PROTECTION PLANS
- GWB PAINTED PT-3
- SUSPENDED ACOUSTIC CEILING TILE SYSTEM ACT-1



6TH FLOOR REFLECTED CEILING PLAN
3/16" = 1'-0"
0" 2" 4" 8" 12" 16"



7TH FLOOR REFLECTED CEILING PLAN
3/16" = 1'-0"
0" 2" 4" 8" 12" 16"



- GENERAL NOTES:**
1. EXISTING KINNEY ELECTRICAL PANELS SERVING THIS FLOOR ARE OBSOLETE. PANELS TO BE REMOVED AND REPLACED WITH NEW. EXISTING FEEDERS TO BE REUSED IF CODE COMPLIANT. EXISTING CONDUITS SHALL BE REUSED IF UNDAMAGED. EXISTING PANEL A AND B ENCLOSURE TO TO REUSED FOR FEEDER PASS THRU. PANEL COVERS TO BE REPLACED WITH SOLID COVERS. PRESERVE 40/20/1P BREAKERS FOR REUSE. TURN OVER REMAINING EXISTING BREAKERS TO ELECTRICAL SHOP FOR ATTIC STOCK.
 2. 5TH FLOOR AND 6TH FLOOR ARE FED FROM THE SAME POWER SOURCE. 6TH FLOOR POWER NOT TO BE DISRUPTED DURING NORMAL HOURS OF OPERATION; 7:00AM-7:00PM. ALL POWER OUTAGES SHALL BE SCHEDULED AFTER NORMAL BUSINESS HOURS AND COORDINATED WITH BUILDING MANAGER AND UW ELECTRIC SHOP PRIOR TO OUTAGE.
 3. WAPS TO BE REMOVED BY D&T. NOTIFY D&T TWO WEEKS PRIOR TO DEMOLITION START TO ALLOW TIME TO SCHEDULE REMOVAL.
 4. PRESERVE EXISTING EMERGENCY LIGHTING CIRCUIT FROM PANEL EMA (LOCATED IN THIRD FLOOR ELECTRICAL CLOSET) FOR REUSE.
 5. IT RACK POWER ON ALL FLOORS NOT TO BE DISRUPTED DURING NORMAL HOURS OF OPERATION; 7:00AM-7:00PM. ALL IT RACK POWER OUTAGES SHALL BE SCHEDULED AFTER NORMAL BUSINESS HOURS AND COORDINATED WITH BUILDING MANAGER, D&T AND UW ELECTRIC SHOP PRIOR TO OUTAGE.
 6. EC TO REMOVE ALL NETWORK CABLES BACK TO ELECT ROOM 584.
 7. COORDINATE WITH ABATEMENT DRAWINGS AND SPECIFICATIONS.

- KEYED DEMOLITION NOTES:**
- 1 EXISTING FEEDER AND CONDUITS SHALL BE REUSED IF UNDAMAGED.
 - 2 REMOVE VERTICAL SURFACE RACEWAY.
 - 3 ALL EXISTING DEVICES THIS ROOM TO REMAIN UNLESS NOTED OTHERWISE. REFER TO NEW WORK SHEETS FOR RE-CIRCUITING.
 - 4 EXISTING DEVICE TO REMAIN.
 - 5 RETURN AV CABINET AND EQUIPMENT TO USER AGENCY.
 - 6 REMOVE SURFACE RACEWAY.
 - 7 EXISTING CONDUITS TO BE REROUTED AS REQUIRED FOR NEW PANEL INSTALLATION AT THIS LOCATION. COORDINATE ANY OUTAGES WITH BUILDING MANAGER AND UW ELECTRIC SHOP PRIOR TO WORK.
 - 8 REMOVE DEVICE AND WIRE BACK TO SOURCE. PRESERVE BACK BOX AND CONDUIT FOR REUSE.
 - 9 ELEVATOR SIGNALING LIGHTS AND CONTROLS TO REMAIN.
 - 10 EXISTING BELL SYSTEM DEVICE TO REMAIN.
 - 11 REMOVE LIGHT FIXTURE AND CIRCUIT BACK TO SOURCE. PRESERVE SWITCHLEG FOR REUSE.
 - 12 REMOVE EXTRON CONTROLLER AND ASSOCIATED AV VIDEO OUTLET. RETURN DEVICES TO USER AGENCY.

1 5TH FLOOR DEMOLITION PLAN - ELECTRICAL
 SCALE: 3/16" = 1'-0"
 12" 0 1 2 3 4 5 6 7 8 9 10 11 12

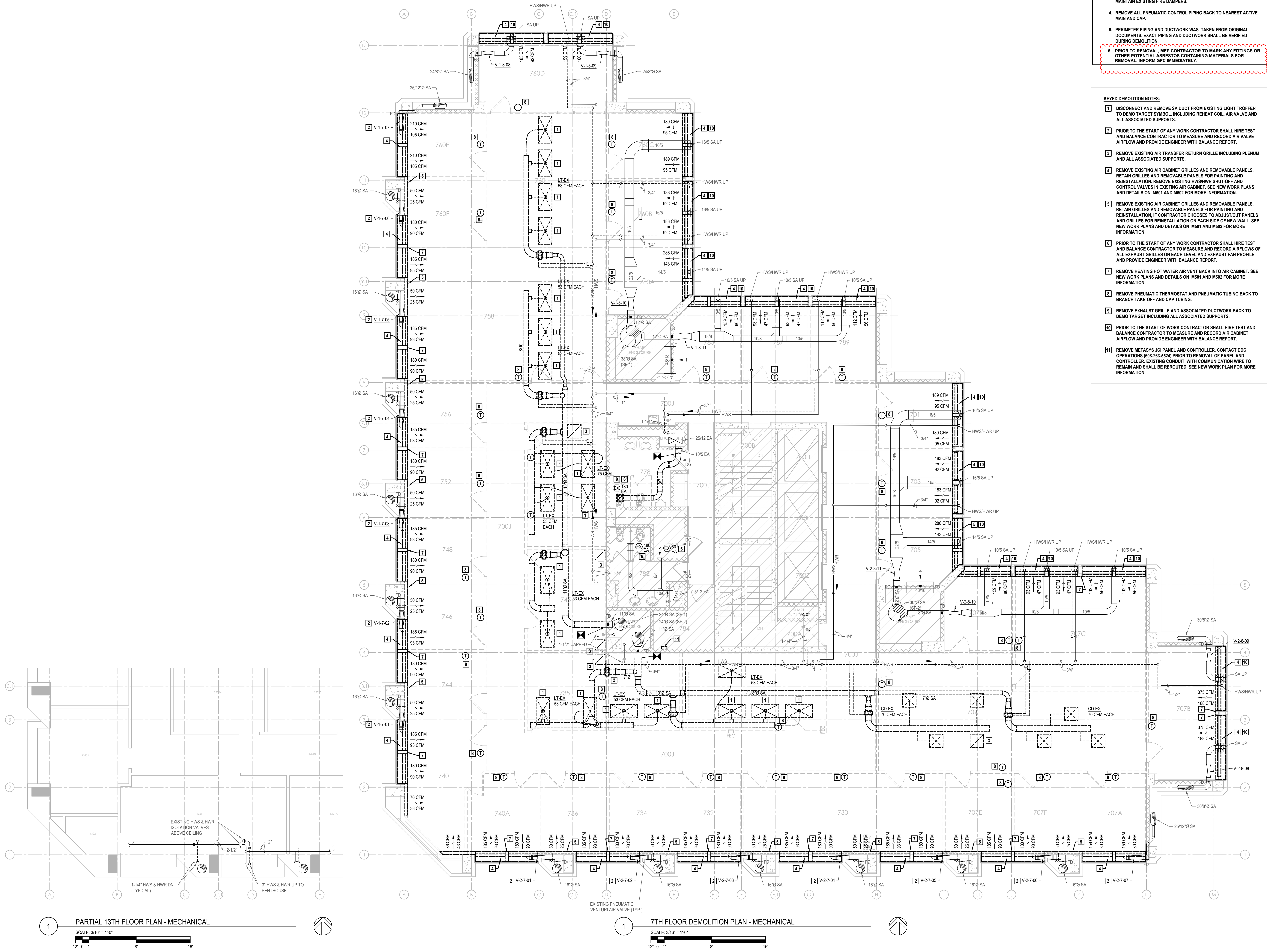
Revisions:

No.	Date	Description
1	04/06/23	ADDENDUM #3

Graphic Scale	AS SHOWN
PRJ. Number	UW: MSN 0039-2115 UWSA: A-21-010
Set Type	BD
Date Issued	02/01/2023
Sheet Number	ED105

- GENERAL NOTES:**
1. REMOVE EXISTING DUCTWORK, PIPING, EQUIPMENT, ETC. SHOWN DARK AND DASHED. CAP DUCTWORK AND PIPING AT MAIN OR EXTEND AS SHOWN IN NEW WORK PLAN.
 2. PLUG ANY EXISTING NEW AIRFLOW TRAVERSE HOLES IN DUCTS.
 3. EXISTING DUCT RISERS (SUPPLY, RETURN, EXHAUST) TO REMAIN. MAINTAIN EXISTING FIRE DAMPERS.
 4. REMOVE ALL PNEUMATIC CONTROL PIPING BACK TO NEAREST ACTIVE MAIN AND CAP.
 5. PERIMETER PIPING AND DUCTWORK WAS TAKEN FROM ORIGINAL DOCUMENTS. EXACT PIPING AND DUCTWORK SHALL BE VERIFIED DURING DEMOLITION.
 6. PRIOR TO REMOVAL, MEP CONTRACTOR TO MARK ANY FITTINGS OR OTHER POTENTIAL ASBESTOS CONTAINING MATERIALS FOR REMOVAL. INFORM GPC IMMEDIATELY.

- KEYED DEMOLITION NOTES:**
- 1 DISCONNECT AND REMOVE SA DUCT FROM EXISTING LIGHT TROFFER TO DEMO TARGET SYMBOL, INCLUDING REHEAT COIL, AIR VALVE AND ALL ASSOCIATED SUPPORTS.
 - 2 PRIOR TO THE START OF ANY WORK CONTRACTOR SHALL HIRE TEST AND BALANCE CONTRACTOR TO MEASURE AND RECORD AIR VALVE AIRFLOW AND PROVIDE ENGINEER WITH BALANCE REPORT.
 - 3 REMOVE EXISTING AIR TRANSFER RETURN GRILLE INCLUDING PLENUM AND ALL ASSOCIATED SUPPORTS.
 - 4 REMOVE EXISTING AIR CABINET GRILLES AND REMOVABLE PANELS. RETAIN GRILLES AND REMOVABLE PANELS FOR PAINTING AND REINSTALLATION. REMOVE EXISTING HWSHWR SHUT-OFF AND CONTROL VALVES IN EXISTING AIR CABINET. SEE NEW WORK PLANS AND DETAILS ON M501 AND M502 FOR MORE INFORMATION.
 - 5 REMOVE EXISTING AIR CABINET GRILLES AND REMOVABLE PANELS. RETAIN GRILLES AND REMOVABLE PANELS FOR PAINTING AND REINSTALLATION, IF CONTRACTOR CHOOSES TO ADJUST CUT PANELS AND GRILLES FOR REINSTALLATION ON EACH SIDE OF NEW WALL. SEE NEW WORK PLANS AND DETAILS ON M501 AND M502 FOR MORE INFORMATION.
 - 6 PRIOR TO THE START OF ANY WORK CONTRACTOR SHALL HIRE TEST AND BALANCE CONTRACTOR TO MEASURE AND RECORD AIR FLOWS ON ALL EXHAUST GRILLES ON EACH LEVEL AND EXHAUST FAN PROFILE AND PROVIDE ENGINEER WITH BALANCE REPORT.
 - 7 REMOVE HEATING HOT WATER AIR VENT BACK INTO AIR CABINET. SEE NEW WORK PLANS AND DETAILS ON M501 AND M502 FOR MORE INFORMATION.
 - 8 REMOVE PNEUMATIC THERMOSTAT AND PNEUMATIC TUBING BACK TO BRANCH TAKE-OFF AND CAP TUBING.
 - 9 REMOVE EXHAUST GRILLE AND ASSOCIATED DUCTWORK BACK TO DEMO TARGET INCLUDING ALL ASSOCIATED SUPPORTS.
 - 10 PRIOR TO THE START OF WORK CONTRACTOR SHALL HIRE TEST AND BALANCE CONTRACTOR TO MEASURE AND RECORD AIR CABINET AIRFLOW AND PROVIDE ENGINEER WITH BALANCE REPORT.
 - 11 REMOVE METASYS JCI PANEL AND CONTROLLER. CONTACT DDC OPERATIONS (608-263-5524) PRIOR TO REMOVAL OF PANEL AND CONTROLLER. EXISTING CONDUIT WITH COMMUNICATION WIRE TO REMAIN AND SHALL BE REROUTED, SEE NEW WORK PLAN FOR MORE INFORMATION.



1 PARTIAL 13TH FLOOR PLAN - MECHANICAL
SCALE: 3/16" = 1'-0"
12' 0" 8' 16'

1 7TH FLOOR DEMOLITION PLAN - MECHANICAL
SCALE: 3/16" = 1'-0"
12' 0" 8' 16'

No.	Date	Description
1	04/08/23	ADDENDUM #3

Graphic Scale	AS SHOWN
PRJ. Number	UW: MSN 0039-2115 UWSA: A-21-010
Set Type	BD
Date Issued	02/01/2023
Sheet Number	MD107