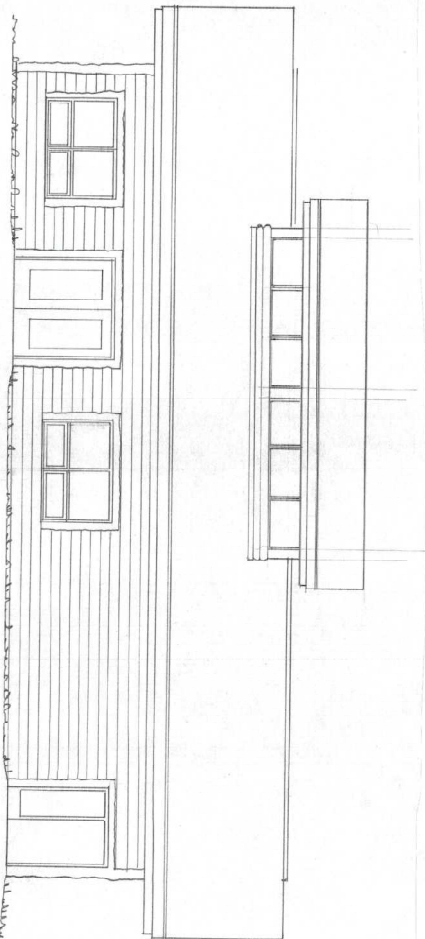
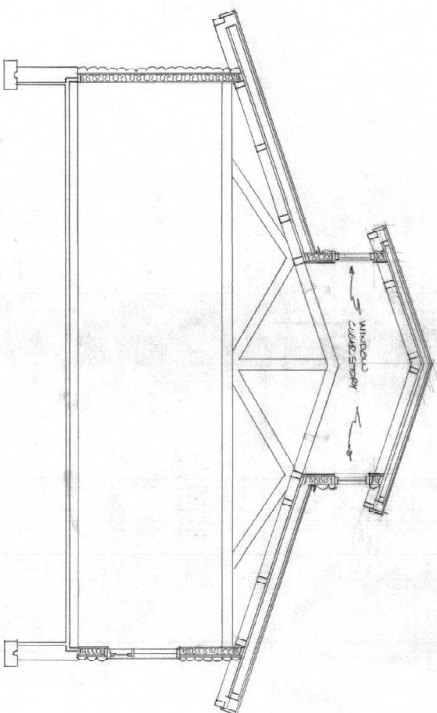


Q&A – Treehaven Forestry Advancement Center RFQ

1. Does the cover page, cover letter and TOC count toward the page limit of 25?
 - Yes.
2. Federal SF330 forms Part I (Sections E, F, H) and Part II are specifically identified in the RFQ. Can you please confirm if you are expecting the additional following sections?
 - Yes, we are expecting all these sections.
 - a. A-C (contract info, POC, proposed team overview)
 - b. D (org chart)
 - c. G (personnel participation)
3. The required minimum resumes do not cover what we would envision as the whole team. For instance, we believe a structural engineer and civil engineer should be included on team. A mock-up of the submission indicates that resumes of all recommended disciplines will not fit in the page count limit of 25. Is this anticipated and acceptable?
 - We desire resumes for the key personnel, who are contributing significantly to the project.
4. Do you require Part II for all firms on the team or just the architect/prime?
 - For the Prime and key consultants.
5. RFQ requests inclusion of projects that best represents “firm’s ability to deliver this type of research and teaching laboratory renovation.” It’s not clear what research and lab functions are happening. The RFQ reads a bit more like a classroom type of function. Is there any program documentation that can be shared?
 - The structure will accommodate training and instruction on forest operations (i.e., timber harvesting, transportation, chainsaw operation and related equipment) and forest products (i.e., milling, drying). The functionality of the enclosed classroom structure will include a large open-space to accommodate potential large timber, instruction on equipment use in the industry and their repair, with flexibility to increase program offerings. This would be a “dry lab” capable of exhausting fumes related to the equipment.
6. We read that a preliminary concept design has been completed for the project. Can this be shared prior to firm selection?
 - The relevant informant from the concept design is within the RFQ. Attached are the two options submitted to Campus. See Option 1 and Option 2 below.
7. We recognize the ambitious budget and schedule for the project. Is the University considering any alternate procurement methods for this project such as with key suppliers like the timber structure?
 - Project delivery will follow “single prime” delivery statute requirements.



Option 2