

ADDENDUM NO. 003 (Rev 01/2017)
ISSUE DATE: 03/27/2023

RE: **GRAINGER HALL 2ND & 5TH FLOOR RENOVATION
PHASE 1 – CLASSROOM 2510
UNIVERSITY OF WISCONSIN-MADISON
975 UNIVERSITY AVE
MADISON, WISCONSIN**

UWSA Project No. **A-22-021**
UW-Madison Project No. **0140-2303**

BID OPENING: **MEP Bidders: 2:00 P.M., April 5, 2023**
GPC Bidders: 2:00 P.M., April 19, 2023

FROM: **DESTREE DESIGN ARCHITECTS, INC.
222 W. Washington Ave. #310
Madison, WI 53703
Phone: (608) 268.1499**

TO: Prospective Bidders

This addendum forms a part of the Contract Documents and modifies the original Contract Documents dated **February 07, 2023** as noted below. Acknowledge receipt of this Addendum by inserting the number and issue date of this addendum in the blank space provided on the Bid Form. Failure to do so may subject the Bidder to disqualification.

This Addendum consists of **1 page** and the attached documents:
0140-2303 Addendum 003 A100
0140-2303 Addendum 003 A700

CHANGES TO BIDDING REQUIREMENTS:

1. NA

CHANGES TO CONDITIONS OF THE CONTRACT:

1. NA

CHANGES TO SPECIFICATIONS (DIVISIONS 2 THRU 33):

1. NA

CHANGES TO DRAWINGS:

1. **ADD:** Add missing finish schedule. See attached sheet A100.
2. **CHANGE:** Change ramp landing length by door 2510a to be 5'-0". See attached sheets A100 and A700.

GENERAL QUESTIONS/CLARIFICATIONS:

1. N/A

END OF ADDENDUM

DESTREE DESIGN ARCHITECTS, INC.
222 W. Washington Ave. #310
Madison, WI 53703
Phone: (608) 268.1499

The University of Wisconsin - Madison
1860 Van Hise Hall, 1220 Linden Drive
Madison, Wisconsin 53706

FINISH SCHEDULE

CODE	MATERIAL TYPE	MANUFACTURER /DISTRIBUTOR	STYLE/NAME	NUMBER	COLOR(S)	DIMENSIONS	NOTES
FLOORING							
CPF-1	CARPET TILE	INTERFACE	BIRRAITE	161680AK00	DARK RED 106298		ASHLAR INSTALL. SEE A100 FOR ENLARGED FLOOR PATTERN PLAN
CPF-2	CARPET TILE	INTERFACE	SOURCE MATERIAL		NICKEL 106309		RAMP CARPET, ASHLAR INSTALL
CPF-3	CARPET TILE	INTERFACE	UPLOAD	161660AK00	LIGHT RED 106290		ACCENT CARPET TILE, ASHLAR INSTALL. SEE A100 FOR ENLARGED FLOOR PATTERN PLAN
BASE							
RB-1	RUBBER BASE	TARKETT	MILLWORK REVEAL	MW-63-F	BURNT UMBER	4.25" HIGH	
WALLS							
PT-1	EGGSHELL PAINT	BENJAMIN MOORE		2124-10	WROUGHT IRON		MATCH BUILDING STANDARD FRAME COLOR
PF-3	EGGSHELL PAINT	BENJAMIN MOORE		HC-169	COVENTRY GRAY		
WC-1	WALL COVERING	P3TEC	COASTAL GRASS	P3T-60256	SABRE GREY		
RVS-1	RIGID VINYL SHEET	INPRO OR EQUAL	PALLADIUM RIGID VINYL SHEET	0151	GRAYSTONE	1.5MM THICKNESS	407" TOP CAP, 409" CORNERS, 48" HIGH SHEET WITH 1/16" BUTT JOINTS WITH COLOR MATCHED CAULK
CEILING							
ACT-1	ACOUSTICAL CEILING TILE	USG	ECLIPSE CLIMAPLUS	76775	WHITE	24"X24"	MATCH BUILDING STANDARD, PROVIDE QUANTITY FOR 10% REPLACEMENT
PF-2	LOW LUSTER ENAMEL	BENJAMIN MOORE		HC-169	COVENTRY GRAY		CEILING SOFFIT PAINT
ACCESSORIES							
GL-1	GLASS	BENDHEIM OR EQUAL	LAMINATED ARCHITECTURAL GLASS		LEVEL 2 WHITE HAZE	9/16" THICK	FOR GUARD RAILS
ST-1	STAIN	MINIWAX OR EQUAL	MINIWAX WOOD FINISH 250 VOC COMPLIANT		EBONY		STAINED CHERRY WOOD
AWP-1	ACOUSTICAL WALL PANEL	SPECIALTY PRODUCTS & INSULATION OR EQUAL	ABSORPTION PLUS HIGH IMPACT CUSTOM SHAPES WRAPPED IN XOREL	6427 2041	CARNEGIE XOREL METEOR 2041		PRE-MANUFACTURED PANELS WITH PRE-INSTALLED CLIPS, MOUNT WITH ZCLIPS
AWP-2	ACOUSTICAL WALL PANEL	SPECIALTY PRODUCTS & INSULATION OR EQUAL	ABSORPTION PLUS HIGH IMPACT CUSTOM SHAPES WRAPPED IN XOREL	6427 2038	CARNEGIE XOREL METEOR 2038		PRE-MANUFACTURED PANELS WITH PRE-INSTALLED CLIPS, MOUNT WITH ZCLIPS
PF-4	SATIN PAINT	BENJAMIN MOORE		2124-10	WROUGHT IRON		MATCH BUILDING STANDARD FRAME COLOR

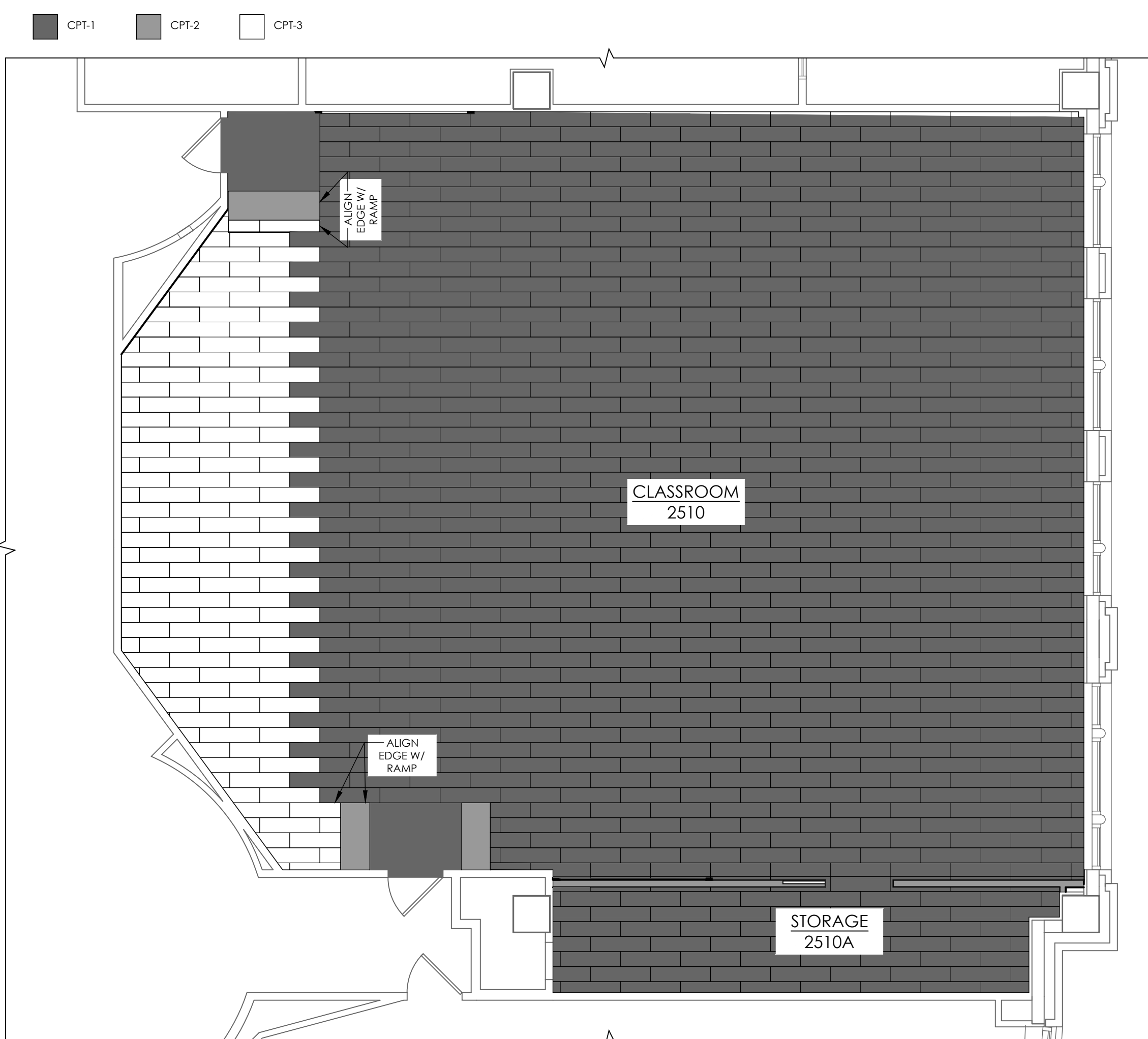
FINISH SCHEDULE NOTES:
 1. SEE TITLE SHEET FOR ADDITIONAL PROJECT NOTES & SHEET INDEX.
 2. REFER TO INTERIOR ELEVATIONS FOR ADDITIONAL FINISH CALLOUTS.
 3. REFER TO REFLECTED CEILING PLAN(S) FOR CEILING FINISHES.
 4. THE MATERIALS ABOVE ARE TO DETERMINE THE BASIS OF DESIGN UNLESS OTHERWISE NOTED AS SINGLE SOURCE PER SPECIFICATION.
 5. REFER TO SPECIFICATIONS FOR ADDITIONAL INFORMATION.

DOOR SCHEDULE

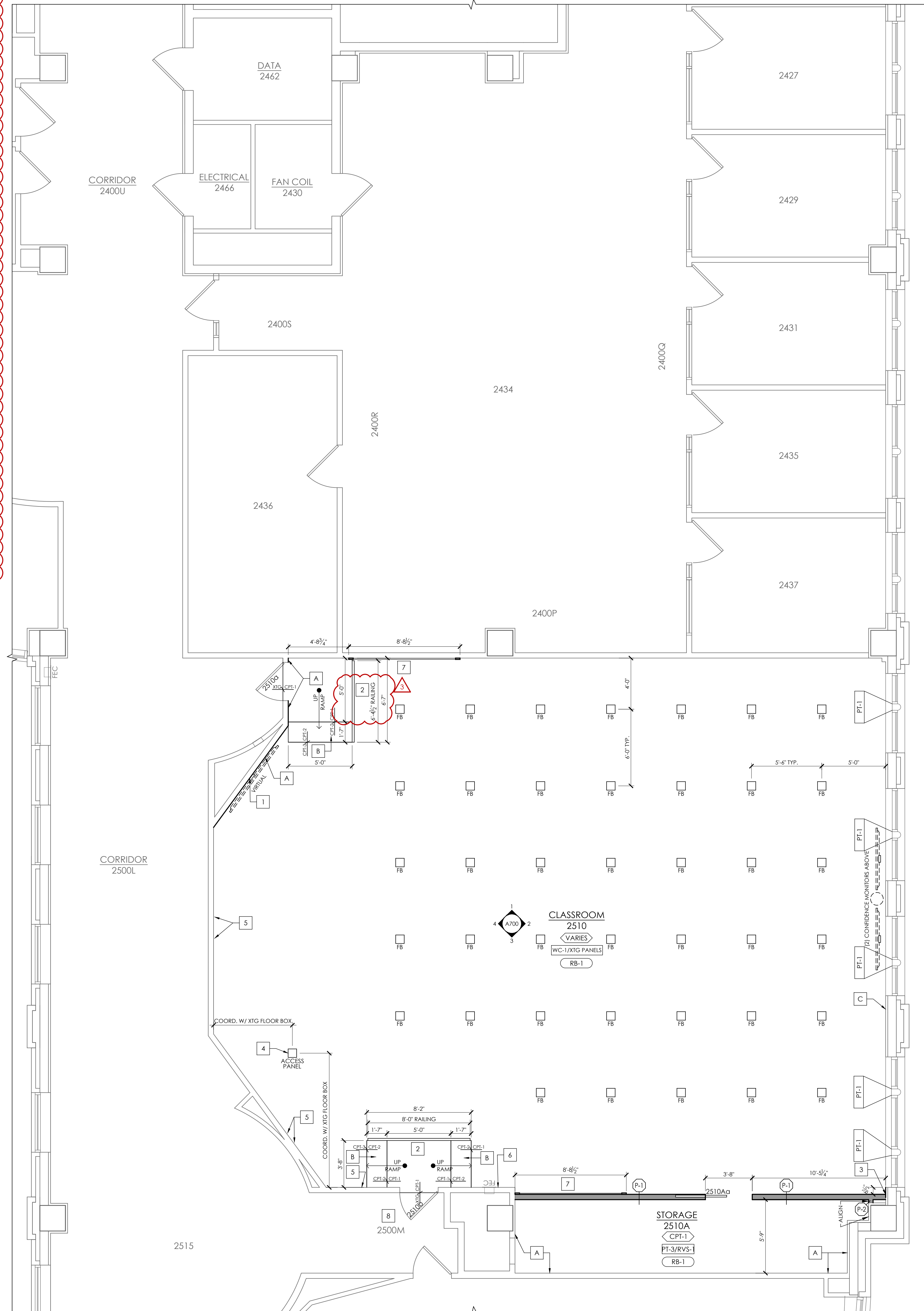
NO.	LOCATION	SIZE	DOOR				FRAME				HW SET	REMARKS	
			THK	TYPE	MATERIAL	COLOR	TYPE	MATERIAL	COLOR	GLASS			
2510a	CLASSROOM	XTG	XTG	XTG	XTG	XTG	XTG	PT-4	XTG	XTG	XTG	XTG	XTG DOOR AND DOOR FRAME, PAINT FRAME PT-4
2510b	CLASSROOM	XTG	XTG	XTG	XTG	XTG	XTG	PT-4	XTG	XTG	XTG	XTG	XTG DOOR AND DOOR FRAME, PAINT FRAME PT-4
2510Aa	STORAGE	3'-10" X 6'-10 3/4"	1 3/4"	1	CHERRY	ST-1	A	HM	PT-4	NG	1	SEE SPECS FOR HARDWARE SET PRODUCT INFORMATION	

NOTE: SEE A700 FOR DOOR DETAILS, FRAME TYPES, AND DOOR TYPES.

FLOORING PATTERN LEGEND:



3 ENLARGED FLOOR PATTERN PLAN
 3/16" = 1'-0"



2 ENLARGED 2ND FLOOR & FINISH PLAN
 1/4" = 1'-0"

GENERAL PLAN NOTES

- SEE TITLE SHEET FOR ADDITIONAL PROJECT NOTES & SHEET INDEX.
- SHADED WALLS DENOTE NEW WALLS. SEE 1/A100 FOR PARTITION TYPES.
- CUTTING AND PATCHING OF WALLS AND FLOORS SHALL BE BY THE CONTRACTOR WHO REQUIRES THE ACCESS.
- PROVIDE WALL BLOCKING @ ALL REQUIRED LOCATIONS (EQUIPMENT, FIXTURES, SIGNAGE, ETC.). COORDINATE EXTENTS AND POSITION WITH THE OWNER PRIOR TO INSTALLATION.
- INSTALL LOW PROFILE RAISED ACCESS FLOOR IN ENTIRE ROOM WITH INTEGRATED RAMPS. ACCESS PANEL TO EXISTING LECTERN FLOOR BOX TO BE CENTERED IN THE FLOOR UNIPANEL. COORDINATE LOCATION OF THE ACCESS PANEL WITH THE EXISTING LECTERN FLOOR BOX. SEE KEYNOTE #4.
- PATCH AND REPAIR DRYWALL AS REQUIRED IN ROOM DUE TO DEMOLITION. SEE SHEET A100 (EXISTING RAISED PLATFORM, EXISTING WALL BASE, WALL MOUNTED DEVICES AND EQUIPMENT, ETC.)
- LEVEL CONCRETE FLOOR AND FILL IN CHIPPED CAVITIES IN ROOM TO PROVIDE A FLAT SURFACE FOR NEW RAISED ACCESS FLOOR; SEE SPECIFICATIONS FOR ADDITIONAL INFORMATION
- GLUE DOWN EXISTING FABRIC WRAPPED PANELS THAT ARE LIFTING. SEE INTERIOR ELEVATIONS

PLAN KEYNOTES

- PROVIDE BLOCKING FOR O.F.O.I 86" LCD DISPLAY, COORDINATE FINAL LOCATION WITH AWI (CONTRACTED BY OWNER); SEE INTERIOR ELEVATION 5/A700.
- LAMINATED GLASS GL-1 GUARD RAIL; SEE DETAIL 16/A700.
- SEE FINISH KEYNOTE C; SLIDE XTG RUNTAIL END COVER TO ACCOMMODATE NEW WALL.
- INFLUX ACCESS PANEL ABOVE XTG FLOOR BOX FOR O.F.O.I LECTERN. COORDINATE LOCATION IN RAISED FLOOR WITH XTG FLOOR BOX; SEE ELECTRICAL DRAWINGS.
- MARKER BOARDS; SEE SHEETS A700 & A901.
- CAPACITY SIGNAGE; SEE INTERIOR ELEVATION 3/A700.
- ACOUSTICAL PANEL FEATURE WALL; SEE SHEET A700 FOR INTERIOR ELEVATIONS AND DETAILS.
- PATCH AND REPAIR CEILING/GWB AS REQUIRED FOR ELECTRICAL WORK. FINISHES TO MATCH XTG; SEE ELECTRICAL DRAWINGS.

GENERAL FINISH NOTES

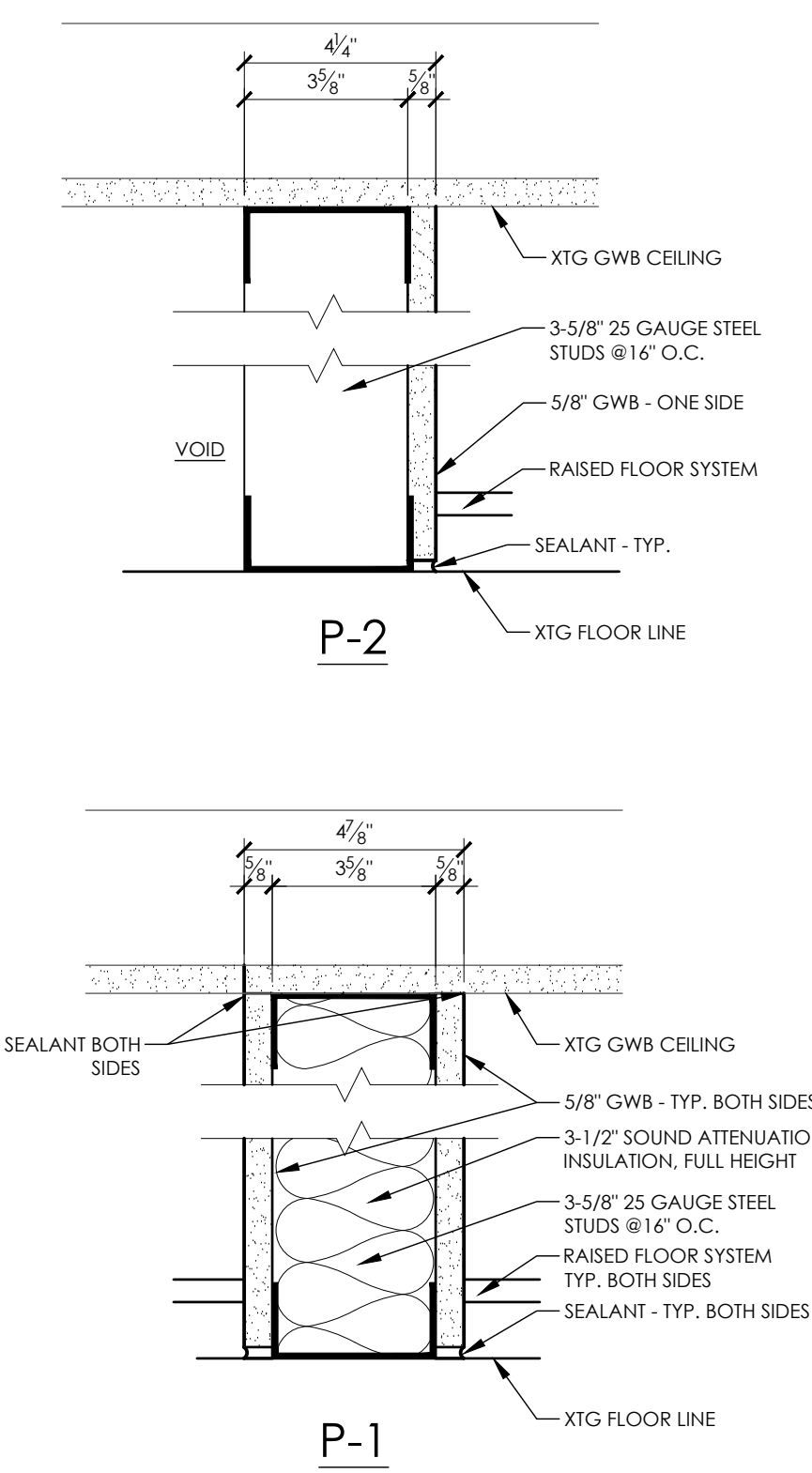
- SEE TITLE SHEET FOR ADDITIONAL PROJECT NOTES & SHEET INDEX.
- PREPARE ALL SURFACES AS REQUIRED TO PROVIDE AN ACCEPTABLE SURFACE FOR THE NEW FINISH INSTALLATION.
- REFER TO INTERIOR ELEVATIONS FOR ADDITIONAL FINISH CALLOUTS.
- REFER TO REFLECTED CEILING PLAN(S) FOR CEILING FINISHES.
- TAGS LISTED BELOW ROOM NUMBERS INDICATES FINISH FOR ALL SURFACES IN THAT SPACE UNLESS NOTED BY SEPARATE FINISH TAGS AND LEADERS.

FINISH KEYNOTES

- A PATCH AND SKIMCOAT WALL TO RECEIVE NEW WALL FINISH; SEE INTERIOR ELEVATIONS 4 & 5/A700
- B CARPET CPF-2 ON RAMP
- C REMOVE RUNTAIL, PATCH AND INSTALL WALL COVERING WC-1, AND REINSTALL RUNTAIL AT ORIGINAL LOCATION

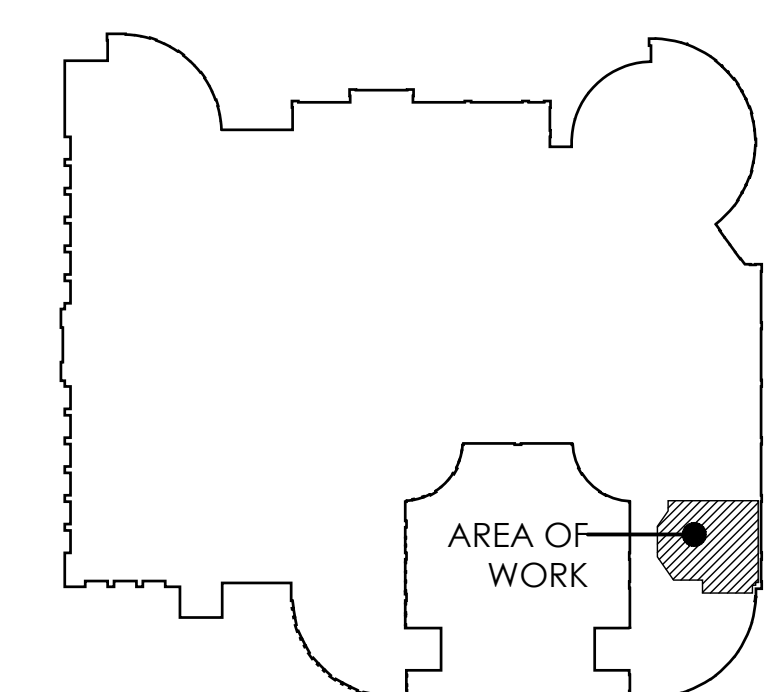
FINISH SYMBOL LEGEND

- SEE INTERIOR ELEVATIONS, REFLECTED CEILING PLAN & FINISH SCHEDULE FOR ANY SPECIAL CONDITIONS OTHER THAN FINISHES LISTED IN SYMBOLS ON PLAN.
- FLOOR MATERIAL / FINISH: ENTIRE ROOM UNLESS NOTED OTHERWISE.
 - WALL MATERIAL / FINISH: ENTIRE ROOM UNLESS NOTED OTHERWISE.
 - WALL BASE TYPE: ENTIRE ROOM UNLESS NOTED OTHERWISE.
 - FLOOR MATERIAL TRANSITION
 - FLOOR BOX INTEGRATED WITH RAISED ACCESS FLOOR SYSTEM
 - CARPET ON FLOOR BOX COVER TO BE CPF-1
 - ACCESS PANEL: SEE ELECTRICAL DRAWINGS



1 PARTITION TYPES

3" = 1'-0"



2ND FLOOR KEY PLAN
 1" = 100'-0"

DESTREE
 architecture & design

222 West Washington Ave. Suite 310
 Madison, WI 53703
 Tel: 608.268.4498
 www.destreearchitects.com

Henneman
 Engineering

Madison, WI 53706
 1232 Fourstar Drive, Suite 101
 Madison, Wisconsin 53717-1860
 T 608.833.7000 F 608.833.6996
 Email: info@henneman.com
 Website: http://www.henneman.com
 JOB NO. 22-10300A

UNIVERSITY OF WISCONSIN - MADISON
 1450 LINDEN DRIVE
 MADISON, WI 53706

WISCONSIN
 UNIVERSITY OF WISCONSIN - MADISON

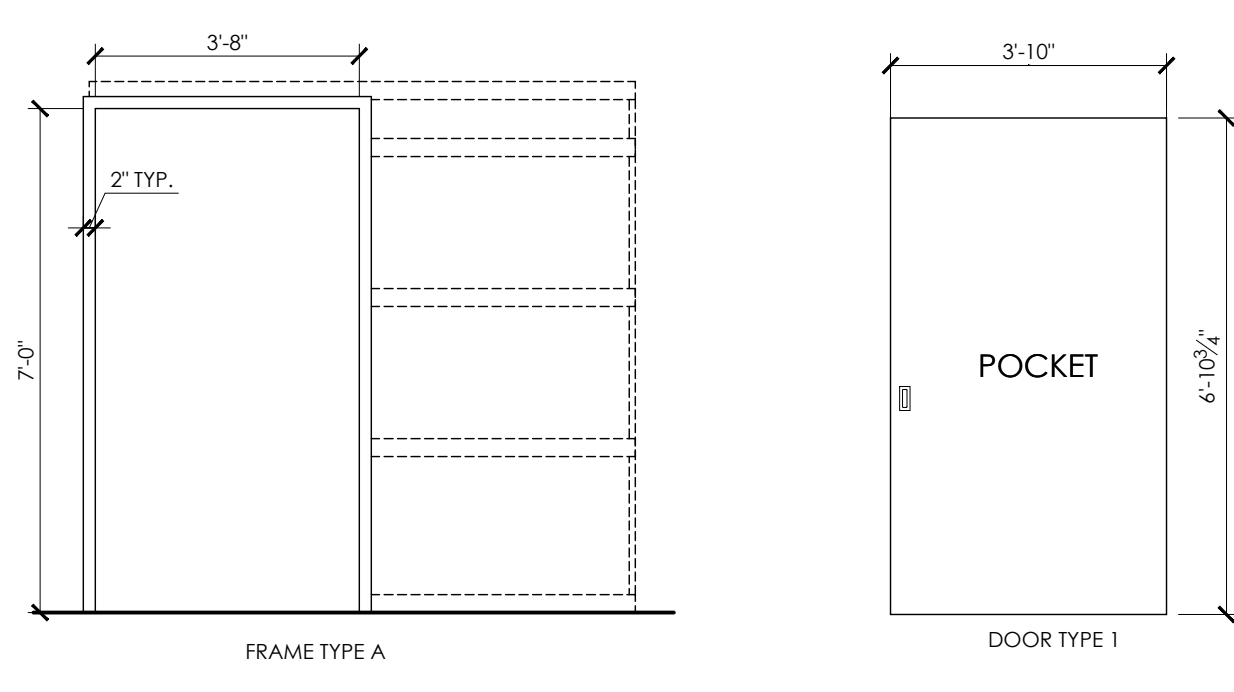
GRAINGER HALL 2ND & 5TH FLOOR RENOVATION
 PHASE 1 - CLASSROOM 2510
 UNIVERSITY OF WISCONSIN - MADISON
 975 UNIVERSITY AVENUE
 MADISON, WI 53706

Sheet Title: ENLARGED 2ND FLOOR & FINISH PLAN, SCHEDULES, & PARTITION TYPES

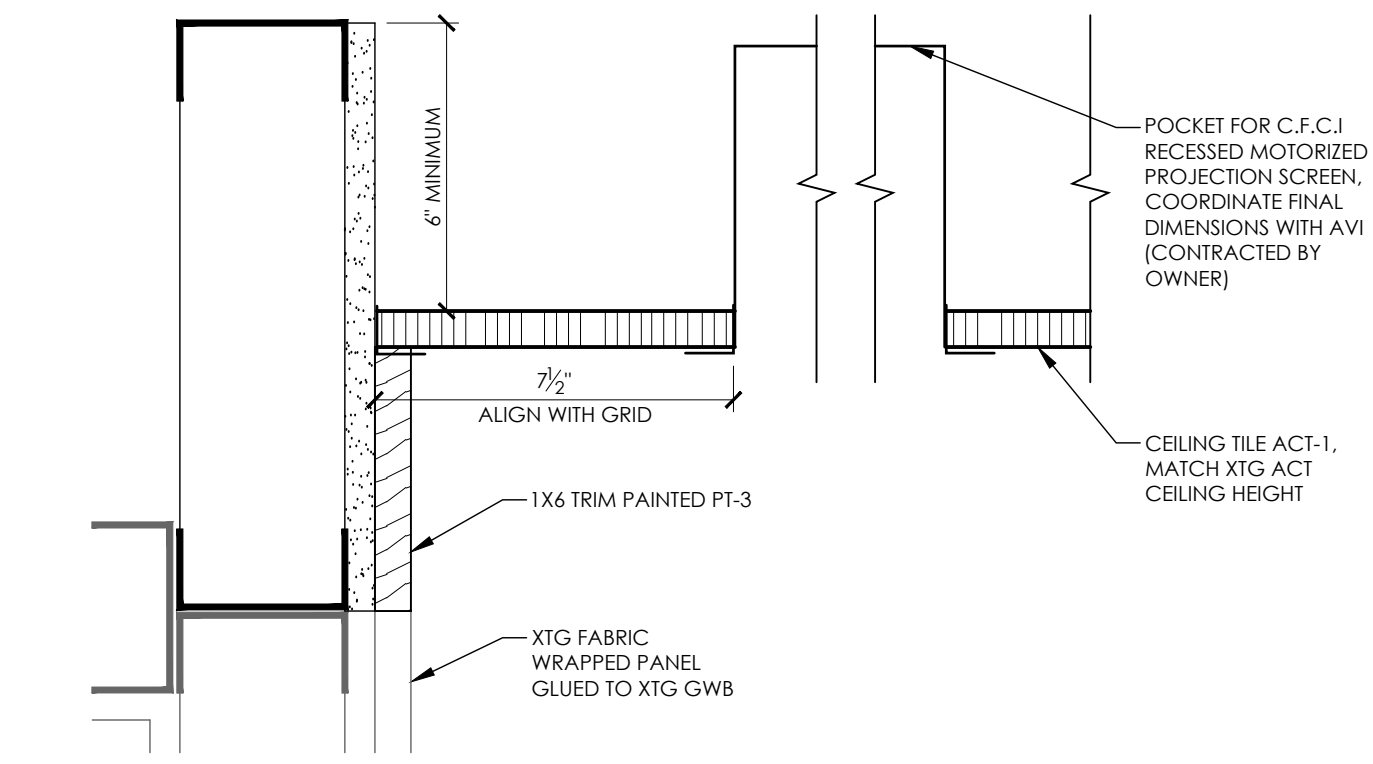
Revisions:

No.	Date	Description
1	03/27/23	ADDENDUM 3

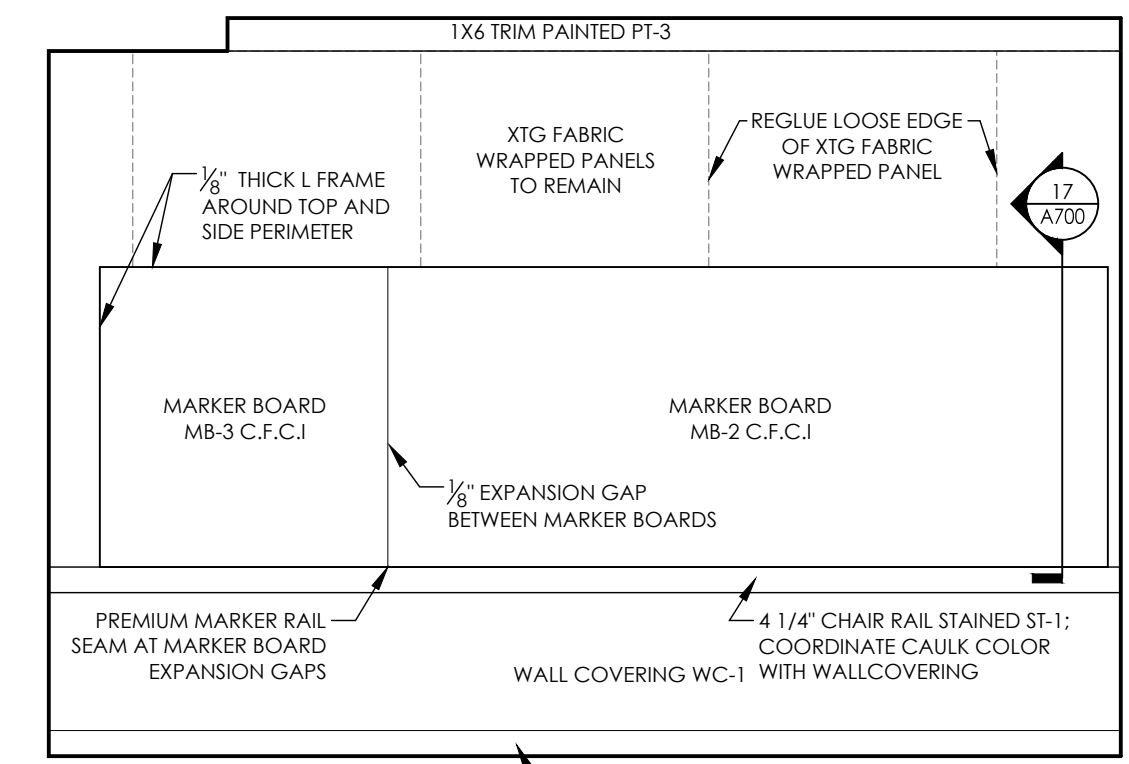
Graphic Scale	AS SHOWN
PRJ. Number	UW: MSN 0140-2303
UWSA: A-22-021	
Set Type	BD
Date Issued	02/07/2023
Sheet Number	A100



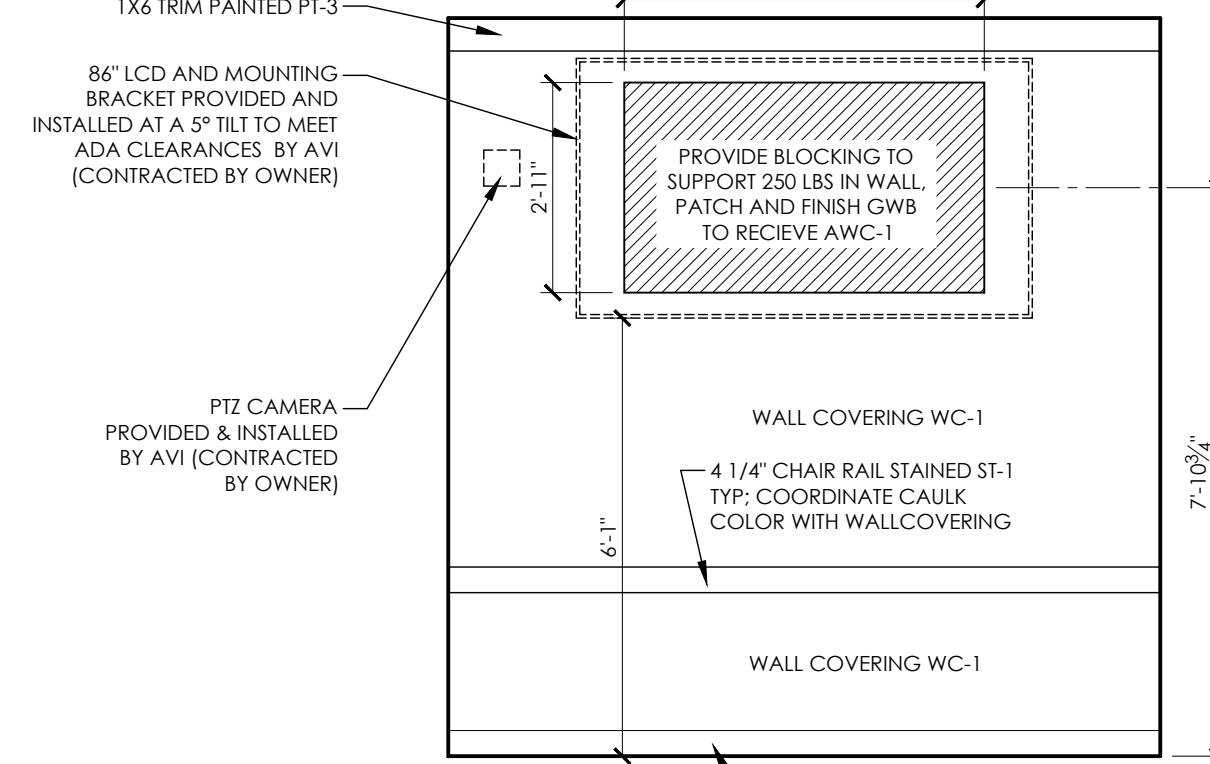
25 FRAME AND DOOR TYPES
3/8" = 1'-0"



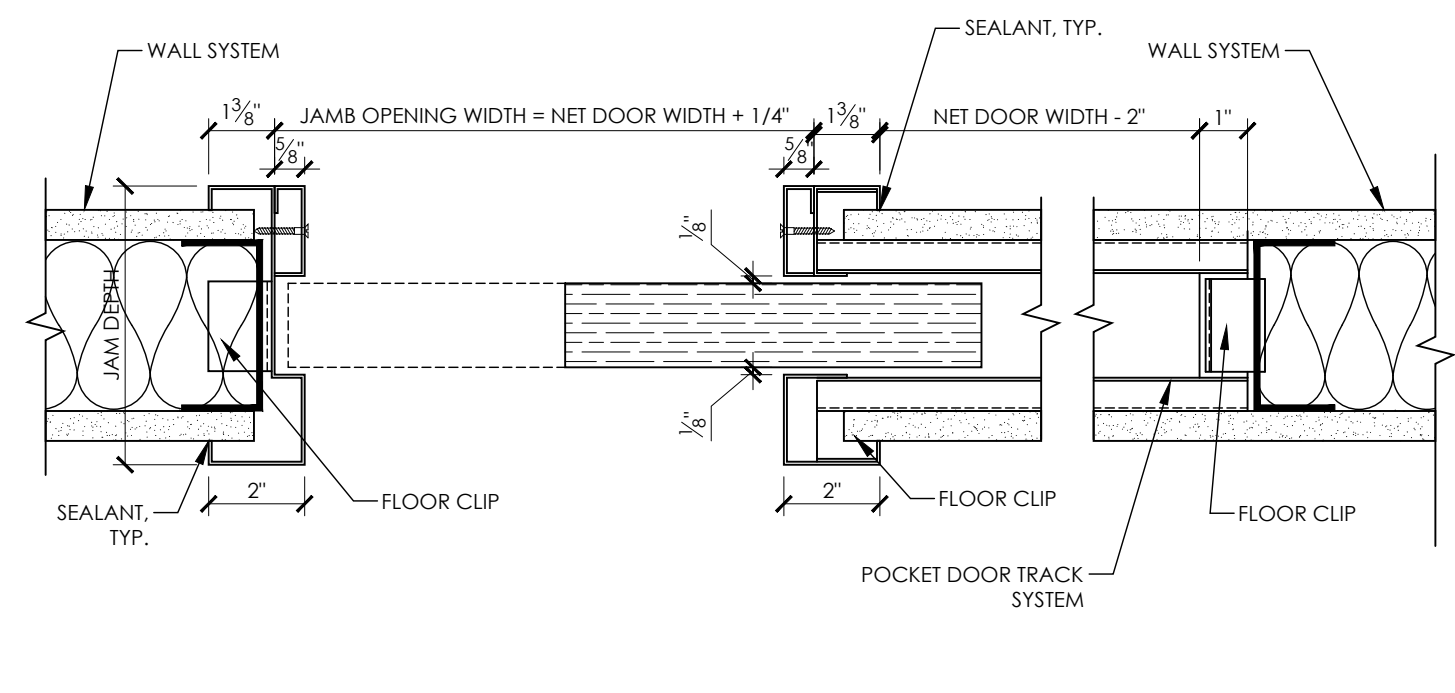
20 EXTENDED WALL & PROJECTOR DETAIL
3" = 1'-0"



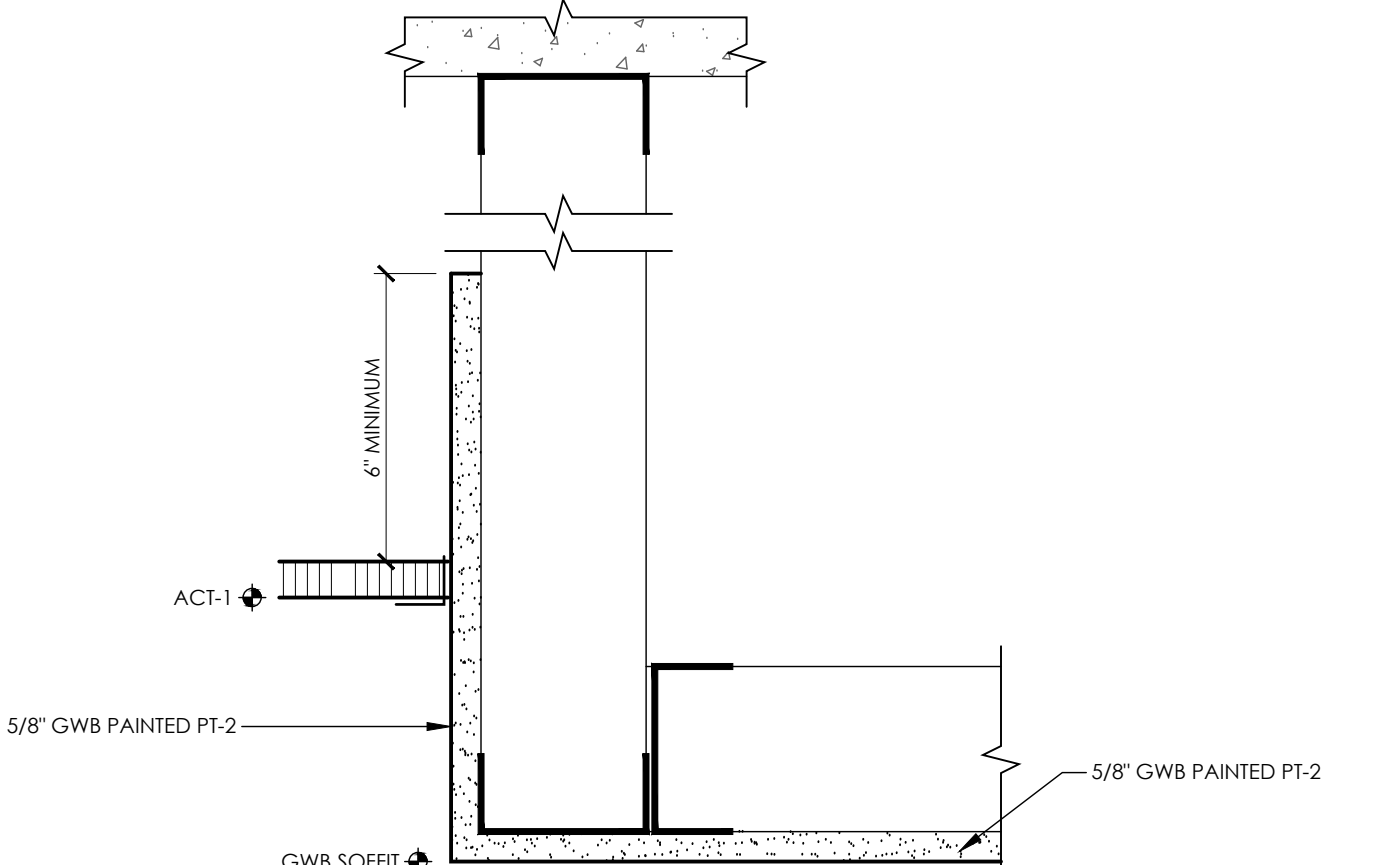
10 ANGLED WALL ELEVATION
3/8" = 1'-0"



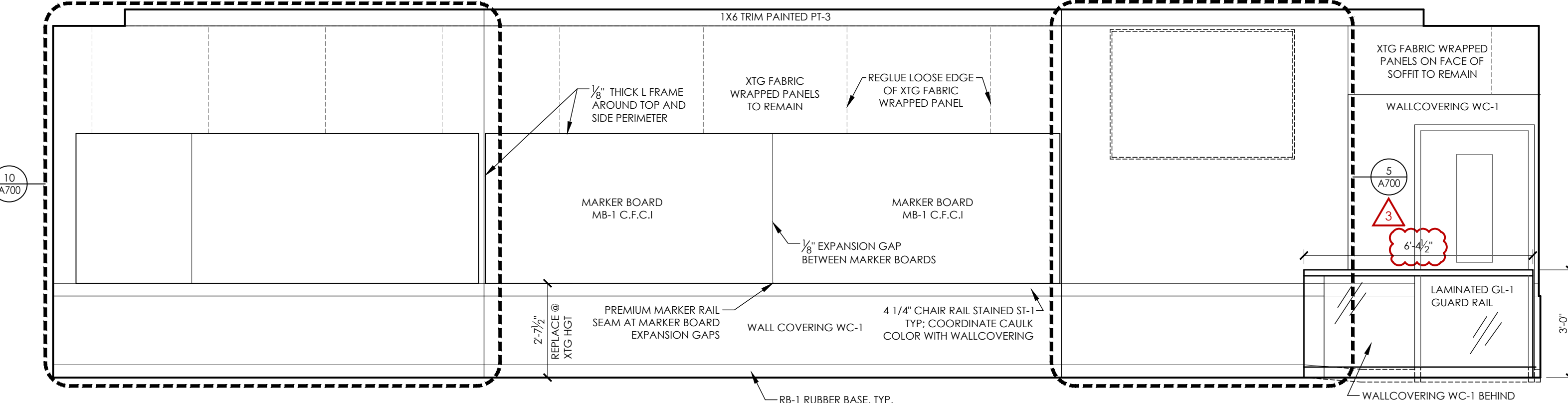
5 ANGLED WALL ELEVATION
3/8" = 1'-0"



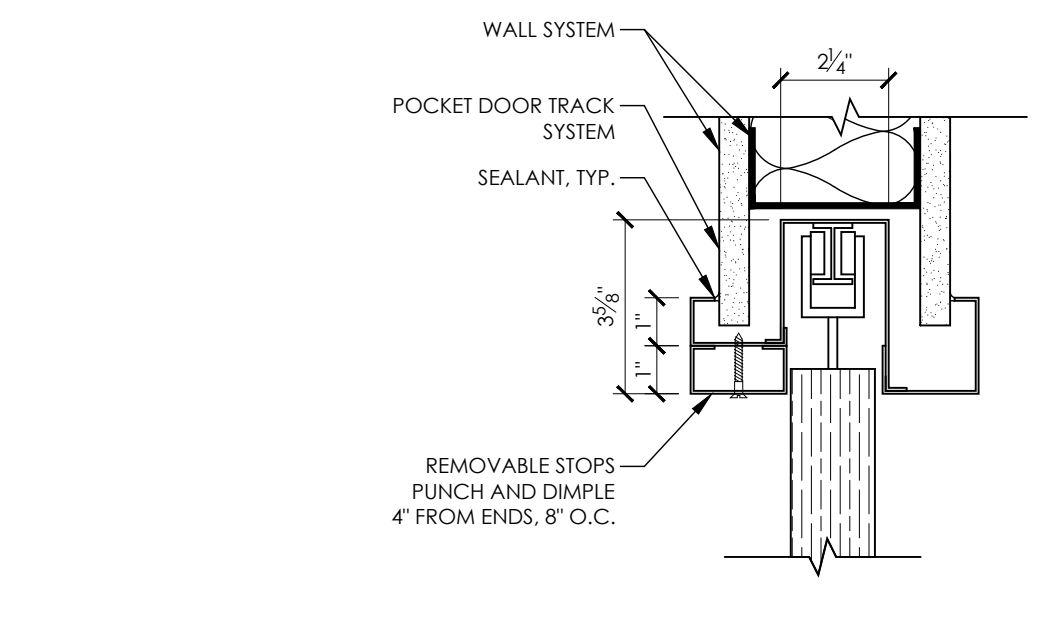
24 JAMB DETAIL @ HOLLOW METAL FRAME
3" = 1'-0"



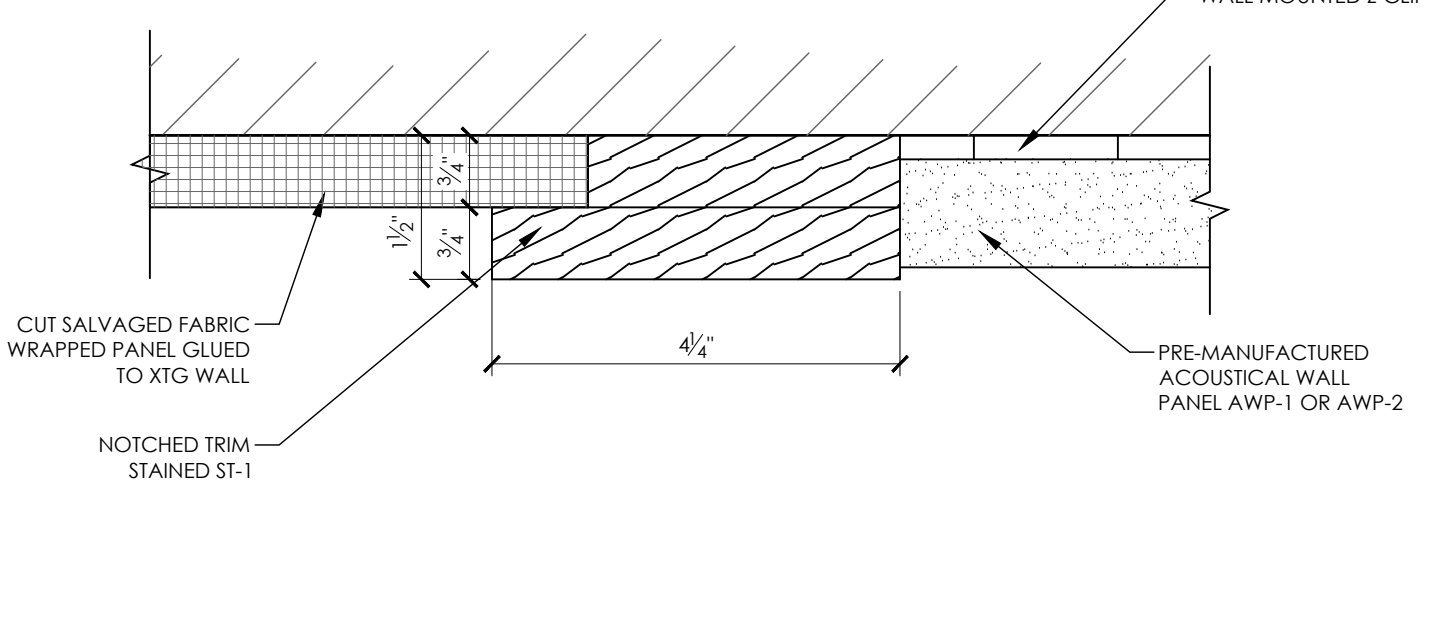
19 NEW SOFFIT EDGE DETAIL
3" = 1'-0"



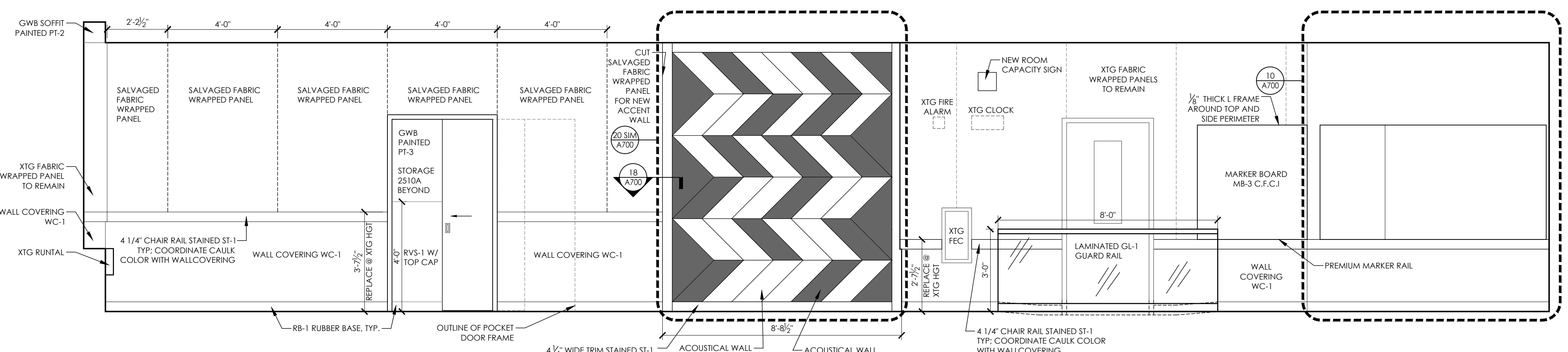
4 CLASSROOM 2510 ELEVATION
3/8" = 1'-0"



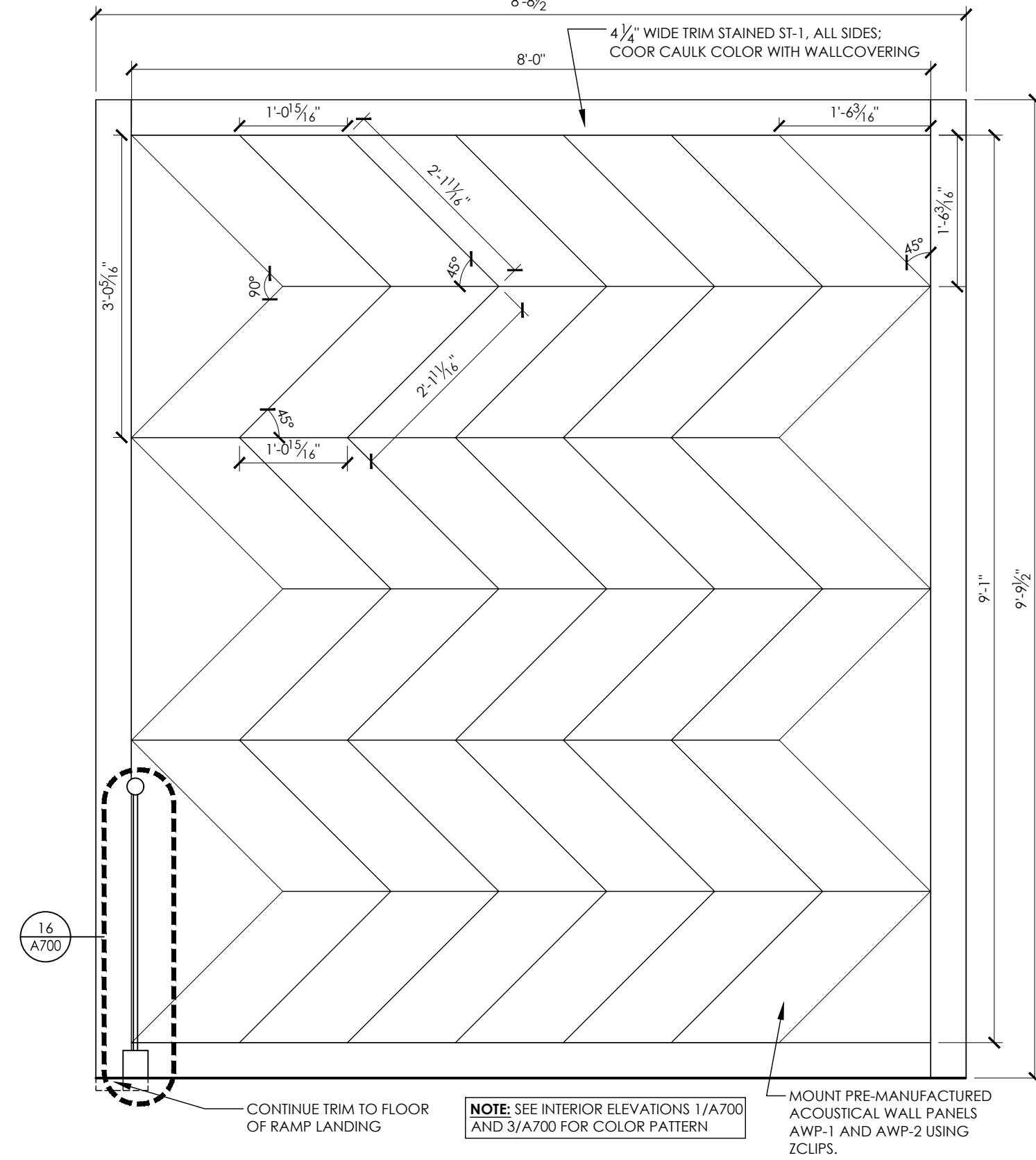
23 HEAD DETAIL @ HOLLOW METAL FRAME
3" = 1'-0"



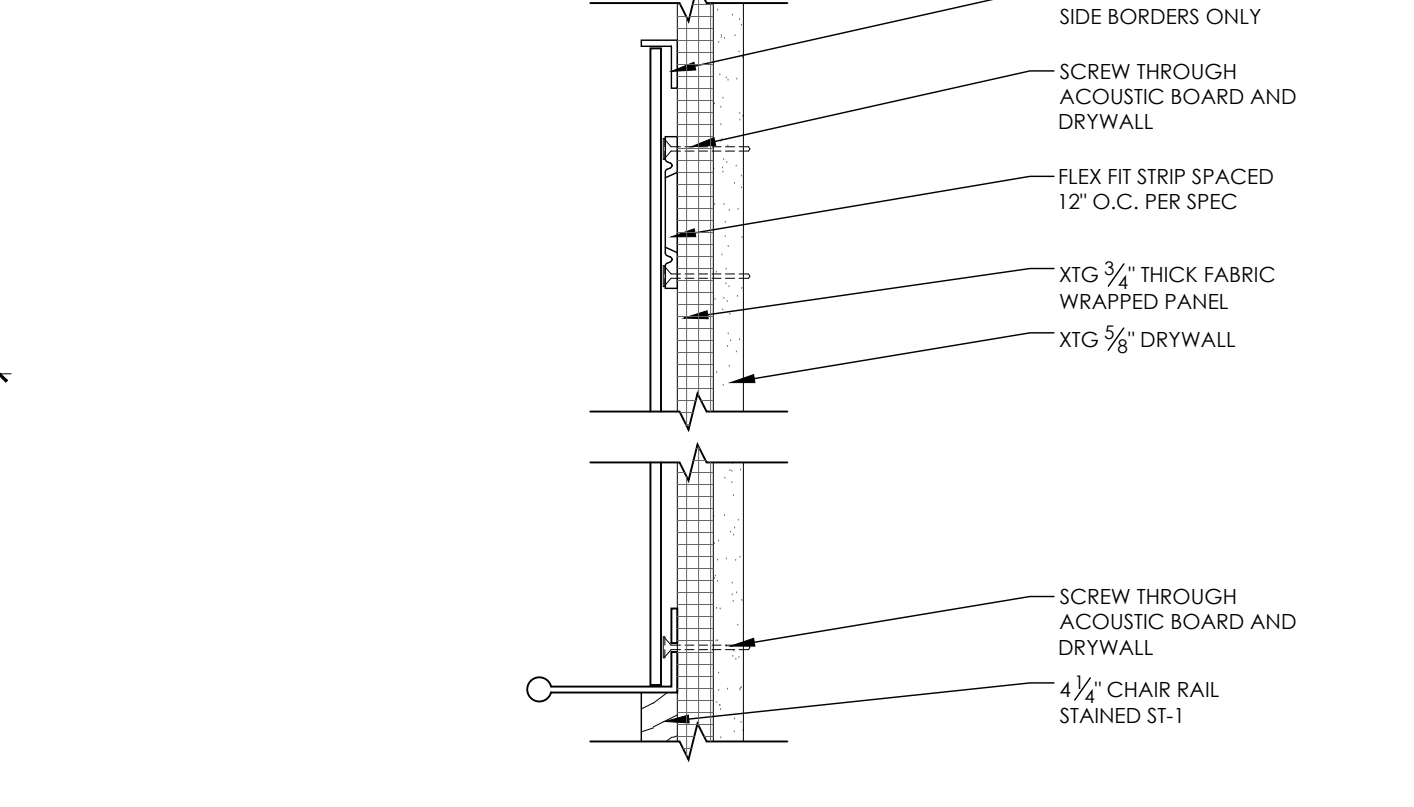
18 NOTCHED TRIM @ CUT PANEL LOCATIONS
6" = 1'-0"



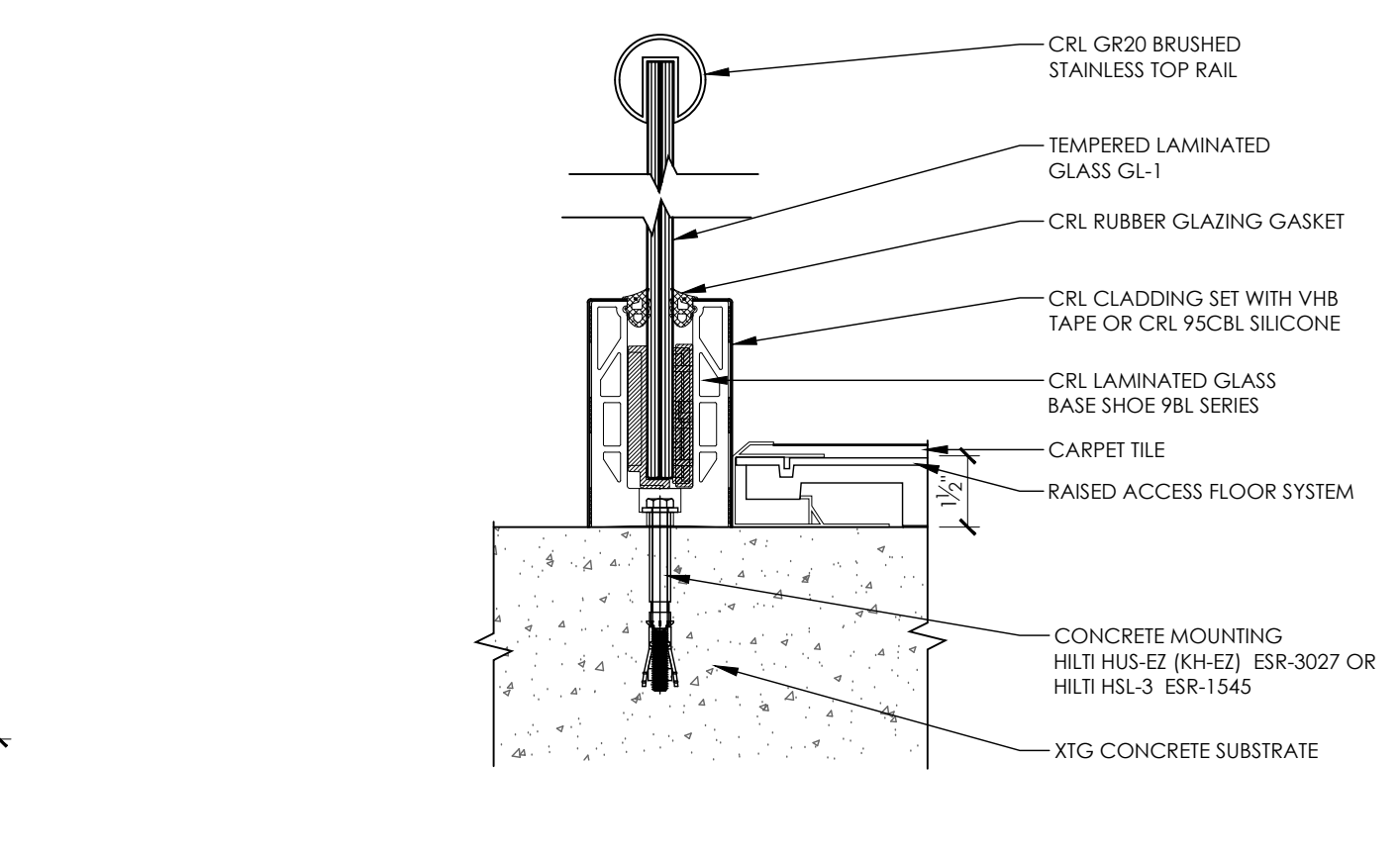
3 CLASSROOM 2510 ELEVATION
3/8" = 1'-0"



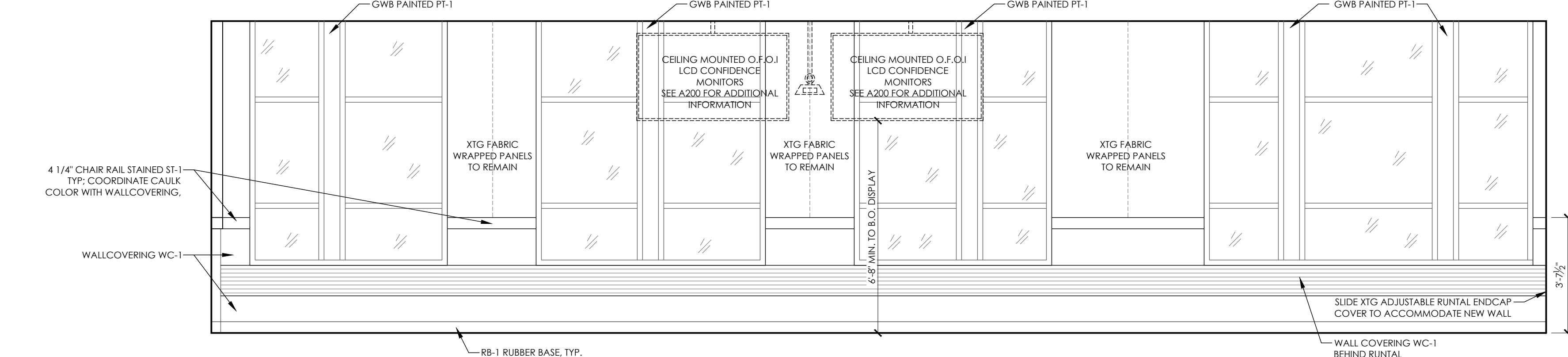
20 ENLARGED ACOUSTICAL WALL PANEL ELEVATION
3/4" = 1'-0"



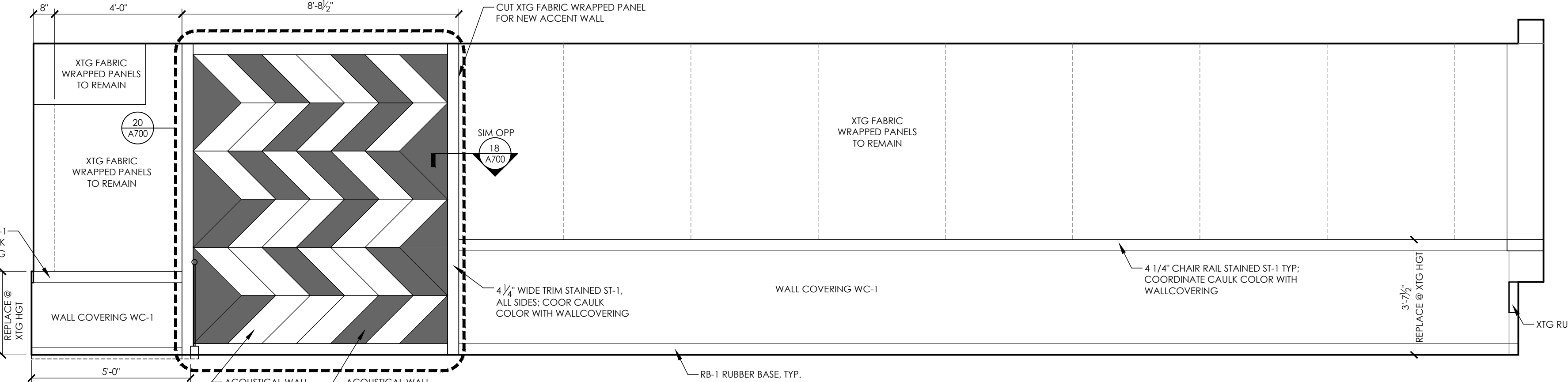
17 TYP. MARKER BOARD DETAIL
3" = 1'-0"



16 RAILING SHOE AND ACCESS FLOOR DETAIL
3" = 1'-0"



2 CLASSROOM 2510 ELEVATION
2/3" = 1'-0"



1 CLASSROOM 2510 ELEVATION
3/8" = 1'-0"

No.	Date	Description
1	03/27/23	ADDENDUM 3

Graphic Scale	
PRJ. Number	UW: MSN 0140-2303 UWSA: A-22-021
Set Type	BD
Date Issued	02/07/2023
Sheet Number	A700