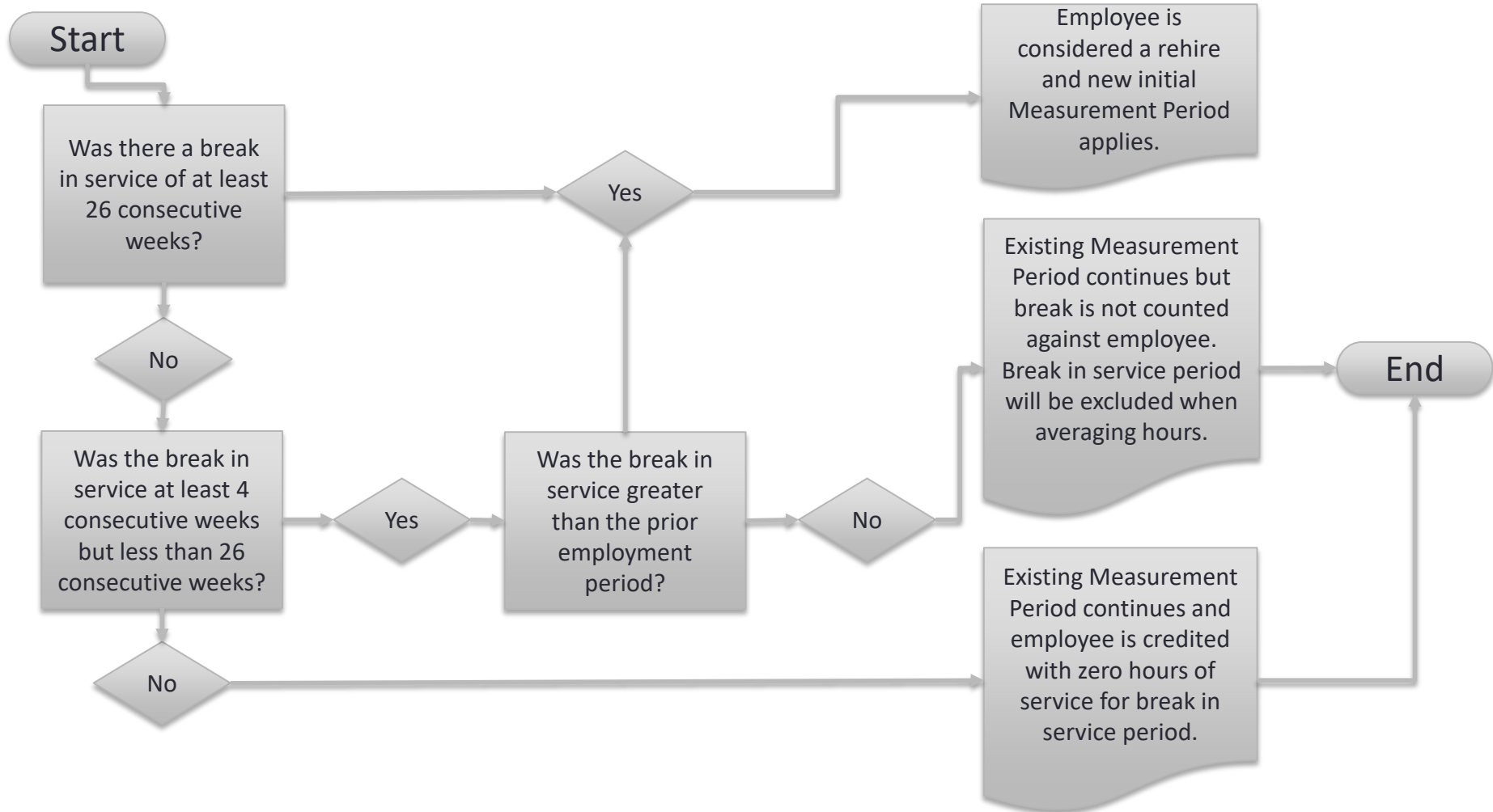


# ACA Measurement Periods and Breaks in Service



Active employees in the leave statuses list below should not have the time counted against them during the measurement period; instances where these leaves apply will have the break periods excluded when calculating average hours:

- FMLA
- Military Leave
- Jury Duty
- Educational breaks when not scheduled to work (e.g. summer months for 9-month employees)