

UNIVERSITY OF  
WISCONSIN

**River Falls**

GLOBAL. INNOVATIVE. EXCELLENT.

# Campus Master Plan and Major Projects Update

University of Wisconsin System Board of Regents

Capital Planning and Budget Committee - April 10, 2014



Elizabeth A. Frueh

Assistant Chancellor for Business and Finance

**UNIVERSITY OF  
WISCONSIN**

**River Falls**

GLOBAL. INNOVATIVE. EXCELLENT.



UNIVERSITY OF  
 WISCONSIN

River Falls

GLOBAL. INNOVATIVE. EXCELLENT.

## UWRF MAJOR PROJECTS

- ✓ Cascade Avenue
- ✓ Ames South Fork Suites Addition
- ✓ Falcon Center
- ✓ Ramer Renovation – Phase I
- Rodli Hall Renovation
- May Hall Addition and Remodeling
- New Science and Technology Building



# Cascade Avenue



**UNIVERSITY OF  
WISCONSIN**

**River Falls**

GLOBAL. INNOVATIVE. EXCELLENT.

# Jesse H. Ames South Fork Suites



**UNIVERSITY OF  
WISCONSIN**

**River Falls**

GLOBAL. INNOVATIVE. EXCELLENT.



# Falcon Center



Exterior View 2  
*UWRP - Falcon Center*

**AVRES**  
ASSOCIATES

**Hastings+Chivetta**  
ARCHITECTURE • PLANNING • ENGINEERING

Copyright 2013 Hastings & Chivetta Architects, Inc.  
April 2, 2013

**UNIVERSITY OF  
WISCONSIN**

**River Falls**

GLOBAL. INNOVATIVE. EXCELLENT.

# Ramer Field



**UNIVERSITY OF  
WISCONSIN**

**River Falls**

GLOBAL. INNOVATIVE. EXCELLENT.



# Rodli Hall



**UNIVERSITY OF  
WISCONSIN**

**River Falls**

GLOBAL. INNOVATIVE. EXCELLENT.



# May Hall



**UNIVERSITY OF  
WISCONSIN**

**River Falls**

GLOBAL. INNOVATIVE. EXCELLENT.

# Science and Technology Building



**UNIVERSITY OF  
WISCONSIN**

**River Falls**

GLOBAL. INNOVATIVE. EXCELLENT.





# UNIQUE TEACHING FACILITIES IN THE COLLEGE OF AGRICULTURE, FOOD AND ENVIRONMENTAL SCIENCES

---

Dale Gallenberg, Dean

UNIVERSITY OF  
WISCONSIN

**River Falls**

GLOBAL. INNOVATIVE. EXCELLENT.



# UWRF STRATEGIC PLAN – GOAL 1: DISTINCTIVE ACADEMIC EXCELLENCE

- Distinctive Academic Excellence in CAFES based in part on the successful blending of theory with practical application
- Combination of classroom and out-of-classroom learning experiences
- Significant emphasis placed on hands-on, relevant, real-world activities, including our use of laboratory facilities
- Employers consistently tell us that hands-on experience sets UWRF graduates apart from others



# CAFES FACILITIES

- Intentionally include “Laboratory” in referring to our Farms, but same could be said of the Greenhouse and Food Pilot Plants
- These facilities are TEACHING LABORATORIES in the same sense other programs utilize traditional laboratories (ex. Chemistry, Biology, etc.)
- Centered around providing for students and their experiences
- “Working facilities” but structured for students, including classes/labs, employment, and internships





# UWRF LABORATORY FARMS

- Campus Laboratory Farm – part of main UWRF campus; houses equine program, fruit breeding, forestry
- Mann Valley Laboratory Farm – located 3.5 miles northwest of River Falls; houses other livestock enterprises (dairy, beef, swine, sheep), row crop and forage production, grazing, forestry
- Critical components in hands-on experiences for students; must be relevant and current with respect to industries served
- Managed as one Farm unit; logical consolidations of activities and enterprises have occurred over time
- Dairy enterprise moved from Campus Laboratory Farm to Mann Valley Laboratory Farm in 2007 with completion of Dairy Learning Center



# UWRF LABORATORY FARMS

- Row crop production concentrated at Mann Valley; efficient use of specialized equipment
- Equine enterprise at Campus Farm managed separately and with little overlap from other livestock enterprises at Mann Valley
- Soil types at Campus Farm more conducive to Horticulture programming
- Both Farms provide convenience and access - especially true of the Campus Farm
- Challenges but also clear opportunities for programming across the Urban/Rural Interface
- Nearing completion of Master Plan process that will help guide development and renovation of facilities over next 20 years



# CAMPUS LABORATORY FARM

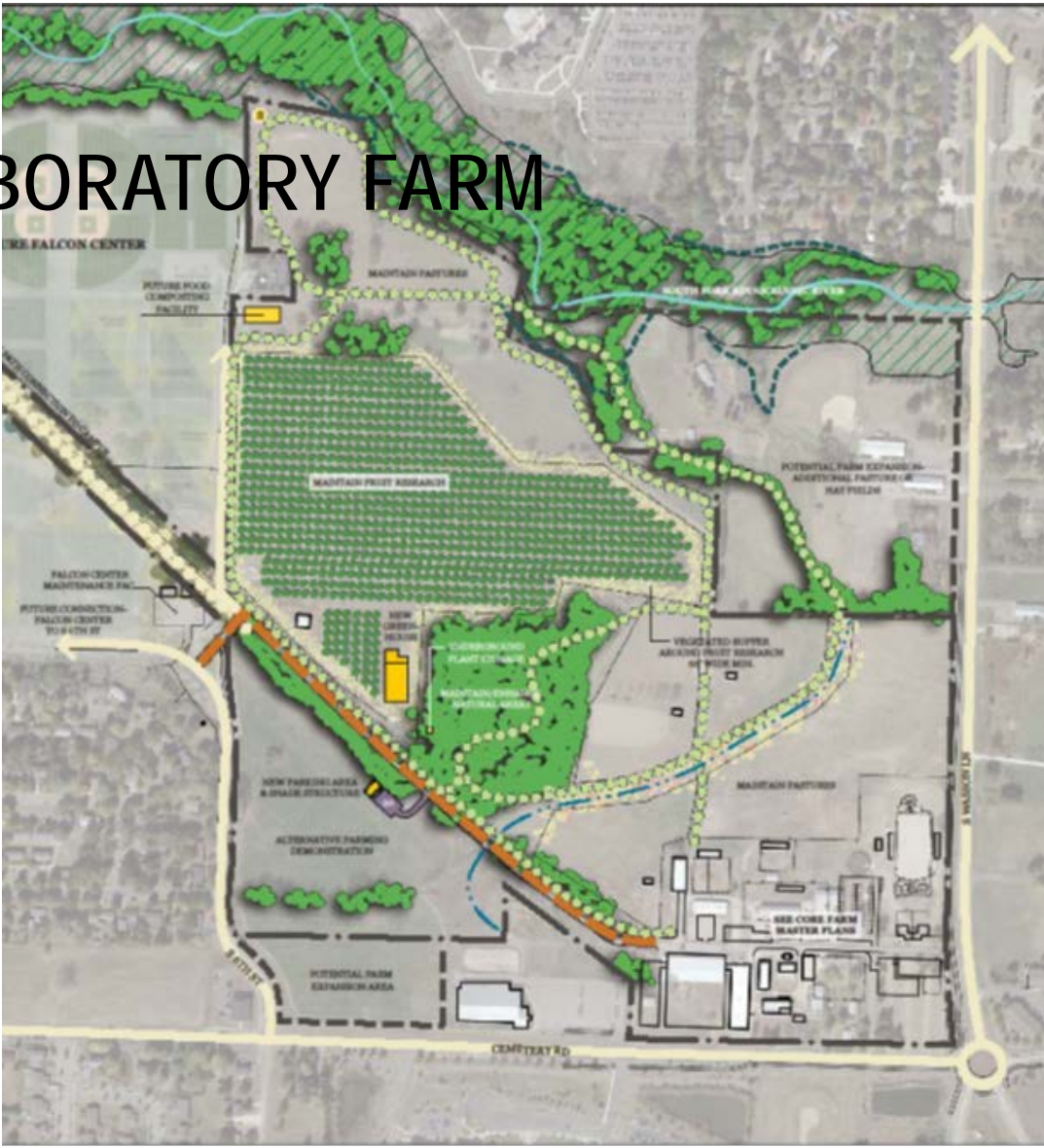
**UNIVERSITY OF  
WISCONSIN**

**River Falls**

GLOBAL. INNOVATIVE. EXCELLENT.



# CAMPUS LABORATORY FARM



UNIVERSITY OF  
WISCONSIN

River Falls

GLOBAL. INNOVATIVE. EXCELLENT.





# MANN VALLEY LABORATORY FARM

**UNIVERSITY OF  
WISCONSIN**

# River Falls

GLOBAL. INNOVATIVE. EXCELLENT.







# FOOD PROCESSING PILOT PLANTS



**UNIVERSITY OF  
WISCONSIN**

**River Falls**

GLOBAL. INNOVATIVE. EXCELLENT.



# GREENHOUSE TEACHING FACILITY



UNIVERSITY OF  
WISCONSIN

**River Falls**

GLOBAL. INNOVATIVE. EXCELLENT.

# IT'S ALL ABOUT THE STUDENTS



**UNIVERSITY OF  
WISCONSIN**

**River Falls**

GLOBAL. INNOVATIVE. EXCELLENT.



# QUESTIONS?

---

**UNIVERSITY OF  
WISCONSIN**

**River Falls**

GLOBAL. INNOVATIVE. EXCELLENT.