

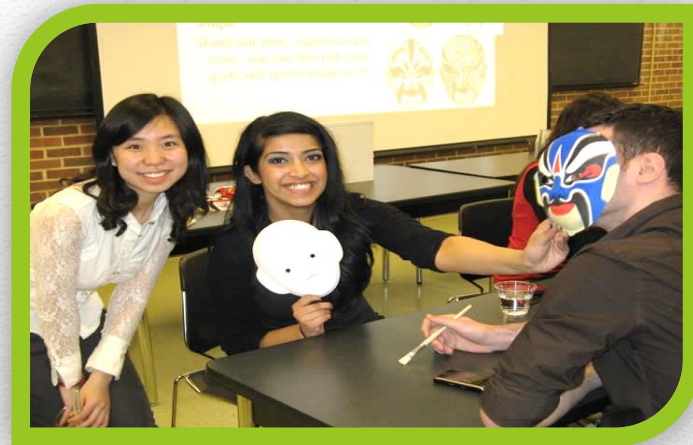


Student Success at UW-Parkside

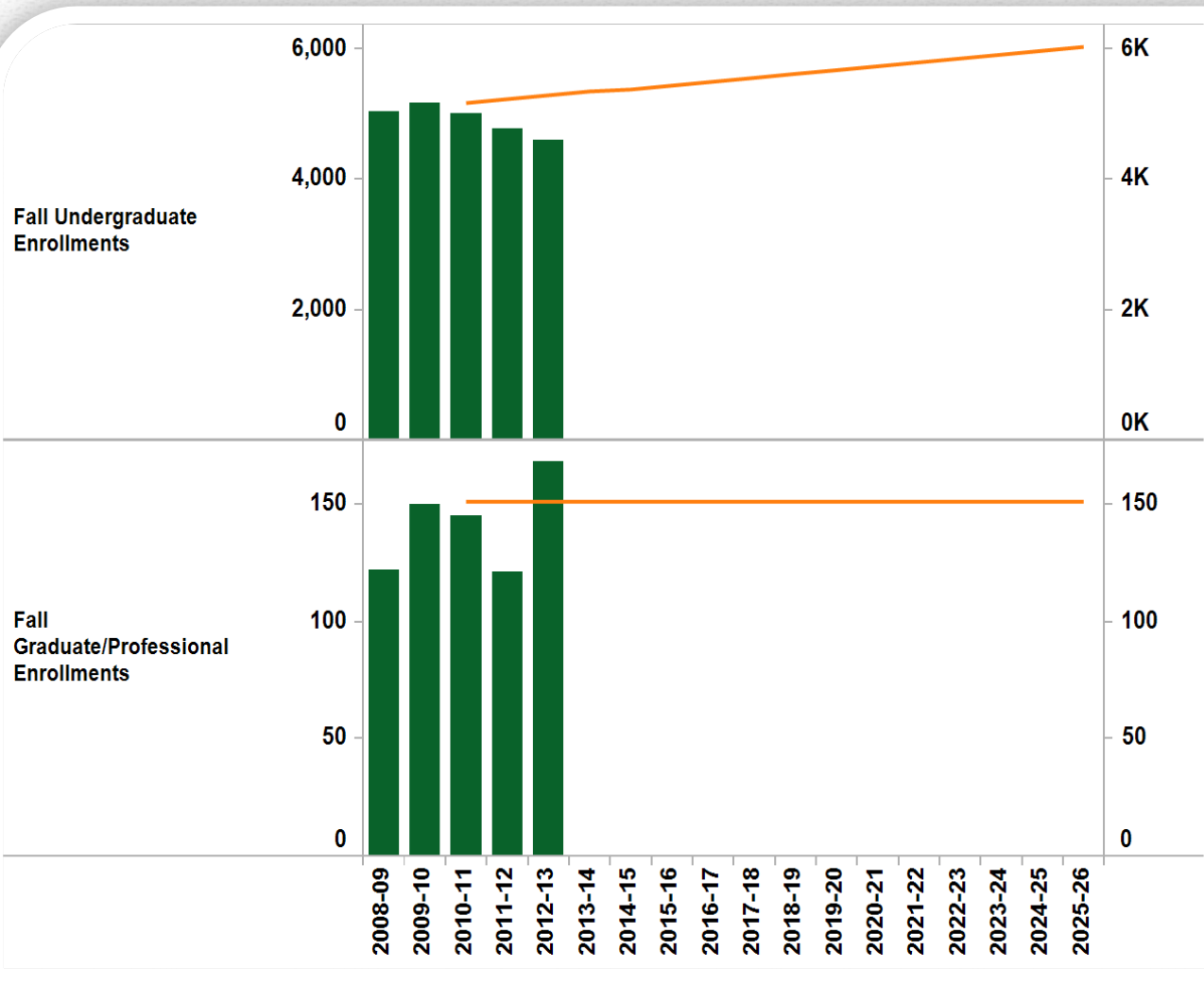
2013 Progress Update on More Graduates for Wisconsin

March 7, 2013

Presented by Chancellor Debbie Ford

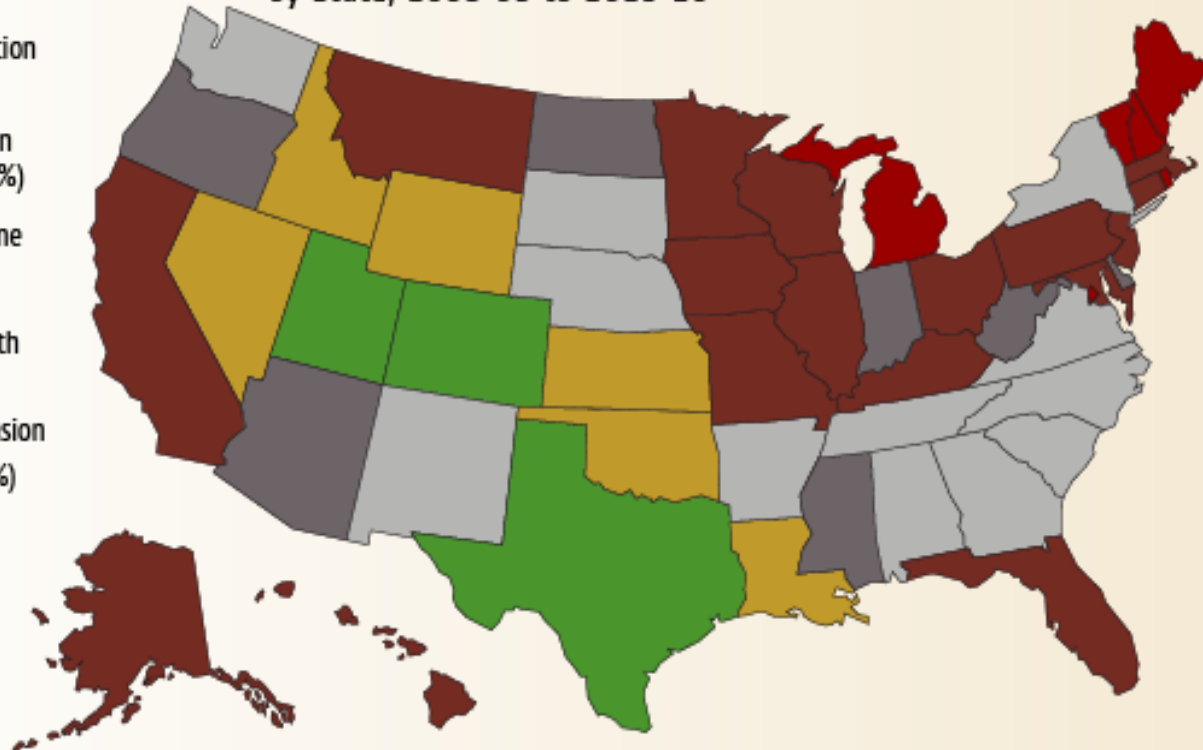
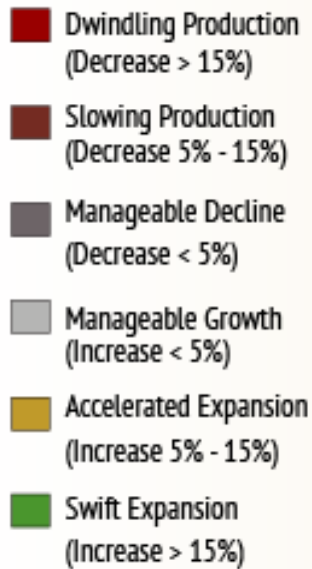


Our Students



Fall Undergraduate and Graduate Enrollments

Projected Percent Change in Public and Nonpublic High School Graduates, by State, 2008-09 to 2019-20



Source: Western Interstate Commission for Higher Education

- Decrease in Traditional Students
- Increase in Hispanic Students
- Outreach to Adult (Post-Traditional) Learners

Changing Demographics



Average ACT Scores



Major	Students
➤ Business Management	749
➤ Criminal Justice	305
➤ Biological Sciences	254
➤ Psychology	186
➤ Applied Health Sciences	179
➤ Sport Management	137
➤ Communication	130
➤ English	129
➤ Sociology/Anthropology	125
➤ Computer Science	124

What They Study

*Includes pending majors

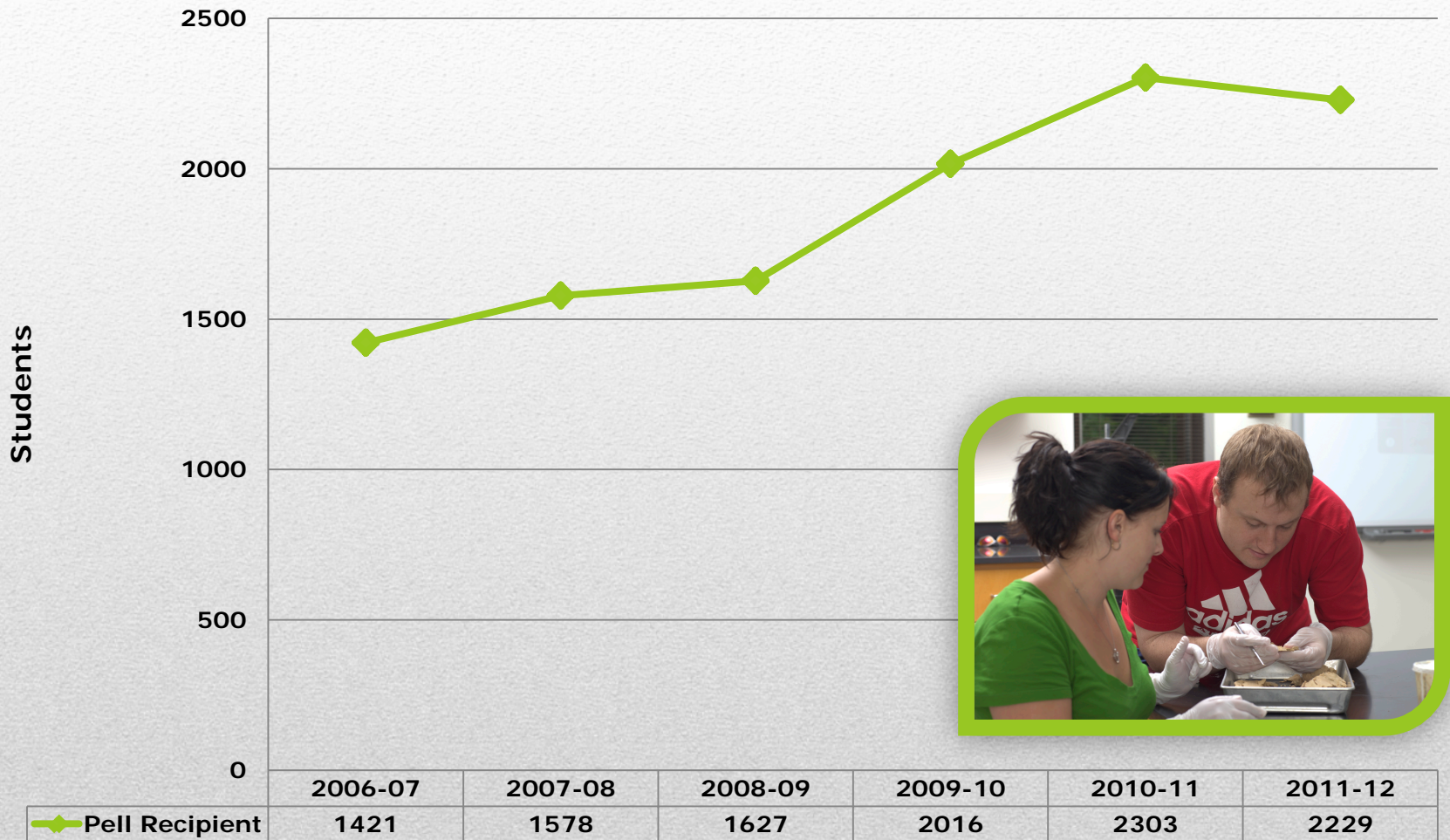
Paying for College



Paying for Most of Tuition and Expenses

Freshmen		Seniors (2011)	
UW-Parkside	UW Comprehensives	UW-Parkside	UW Comprehensives
52%	48%	79%	65%

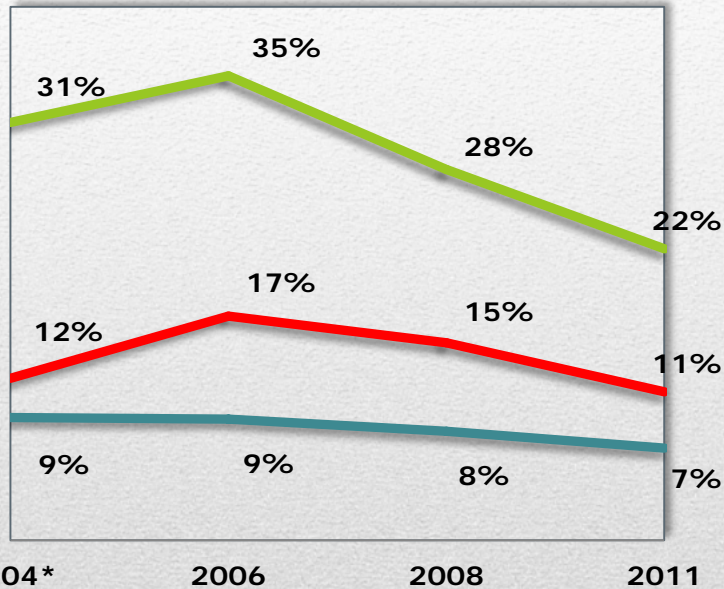
Federal Pell Grants Recipients



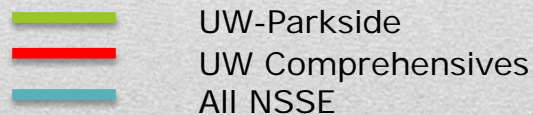
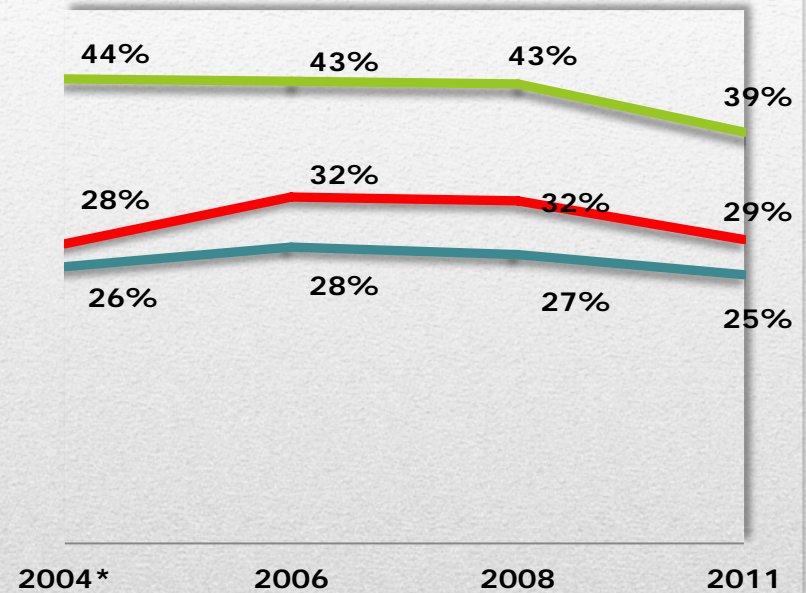
Pell Recipients

20 or More Hours Per Week Off Campus

Freshmen



Seniors



Working Students

* The 2004 UW comparison group included all UW institutions

Percent of First Generation Students in Cohort First-time Full-time Freshmen

Fall 2009

Fall 2010

Fall 2011

Fall 2012

57.7%

55.1%

58.3%

58.6%

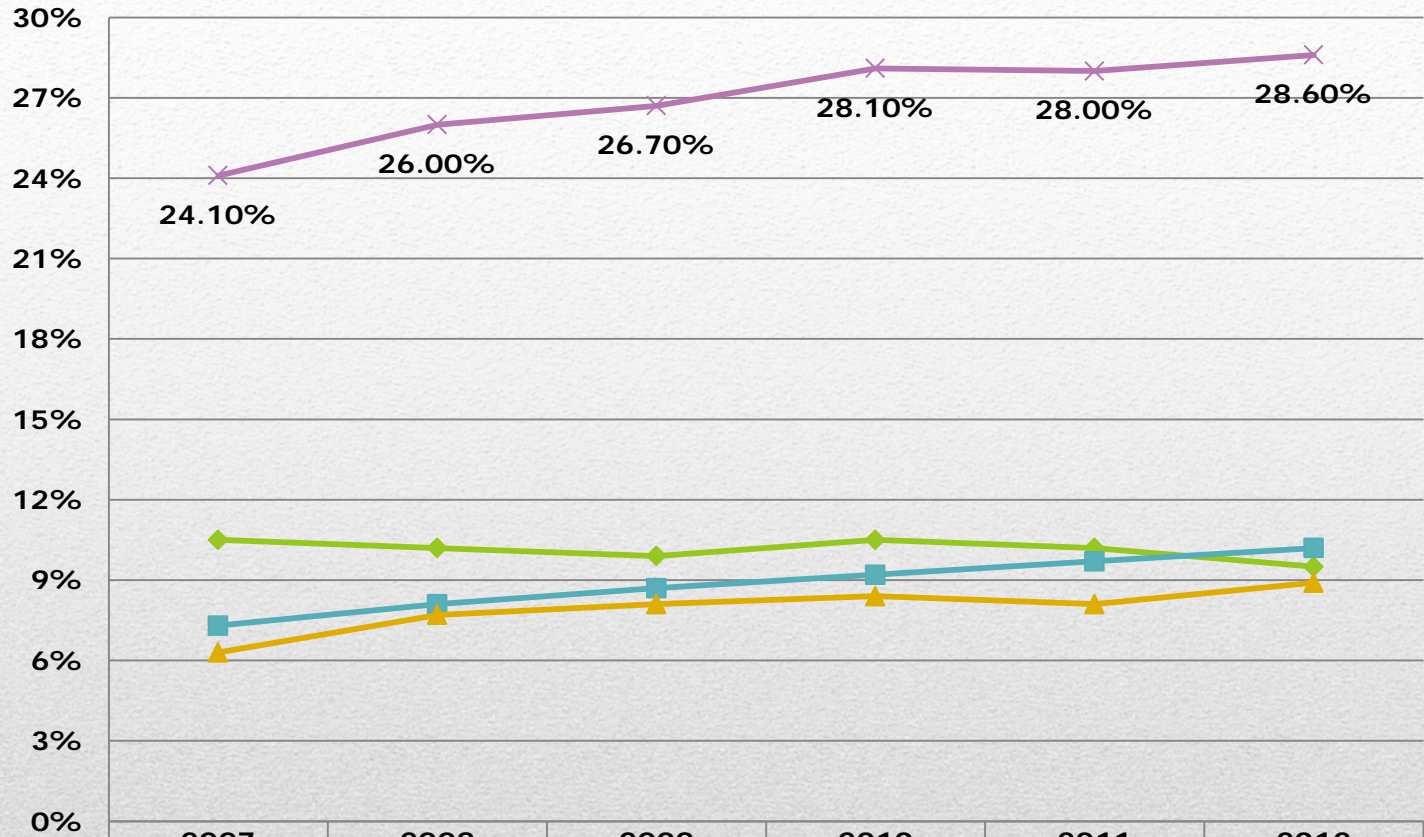


First Generation

Students of Color Enrollment



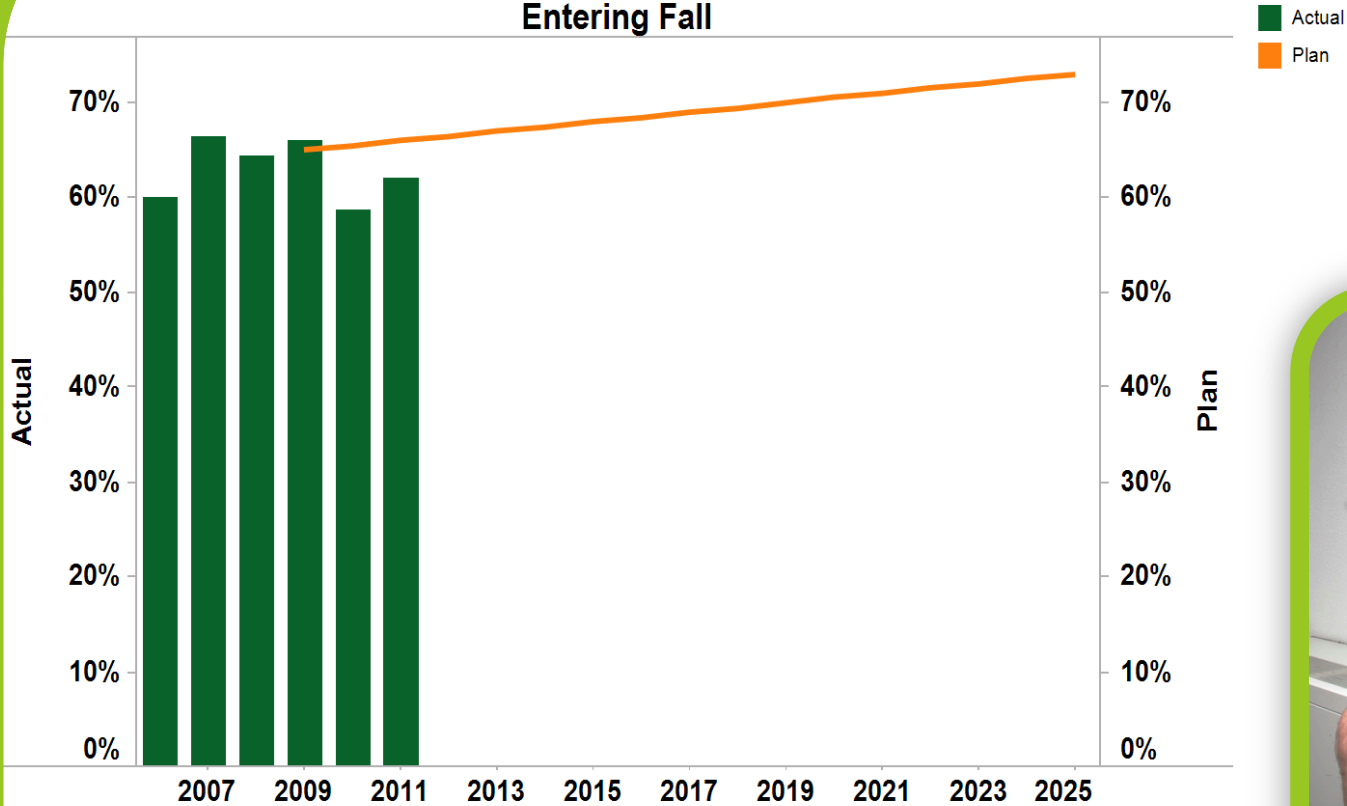
Students



	2007	2008	2009	2010	2011	2012
◆ African American/Black	10.50%	10.20%	9.90%	10.50%	10.20%	9.50%
■ Hispanic/Latino	7.30%	8.10%	8.70%	9.20%	9.70%	10.20%
▲ Other Students of Color	6.30%	7.70%	8.10%	8.40%	8.10%	8.90%
✕ Total Students of Color	24.10%	26.00%	26.70%	28.10%	28.00%	28.60%

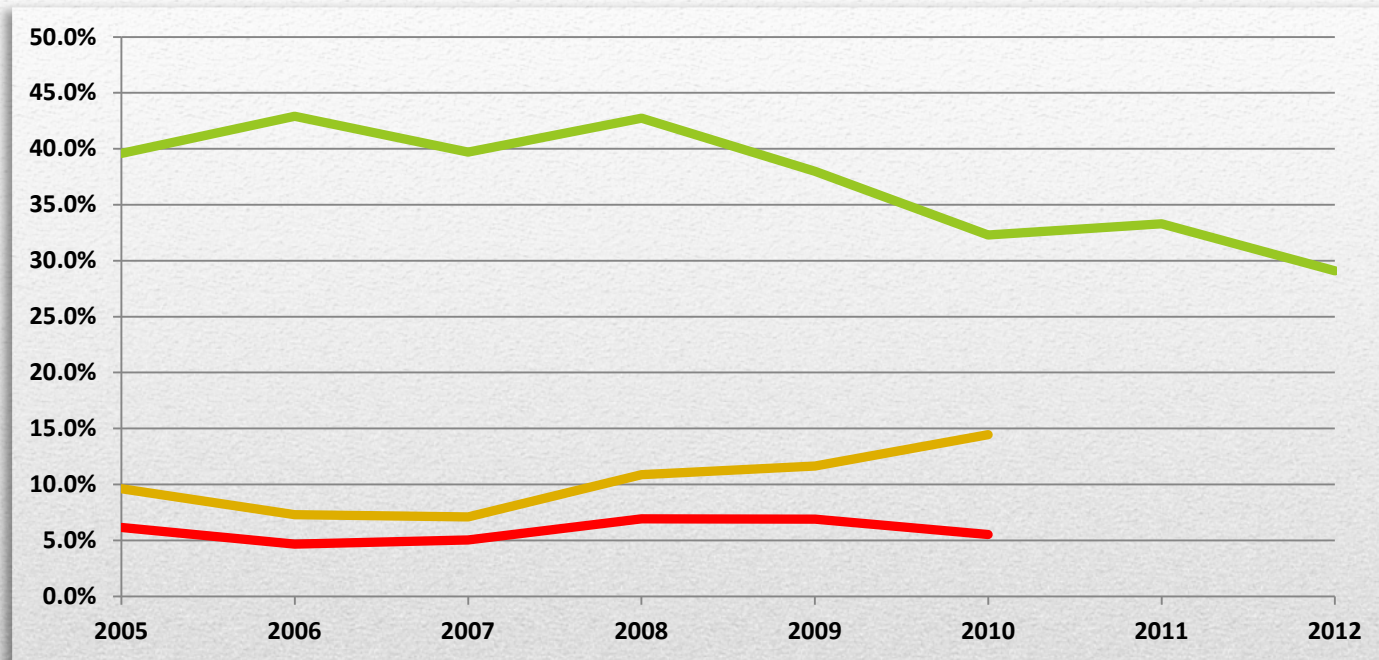
Students of Color

2nd Year Retention Rates vs. Plan
 New Freshmen Entering Full-Time in Fall
 Entering Fall



Retention Rates

First-time Students Requiring Remedial English

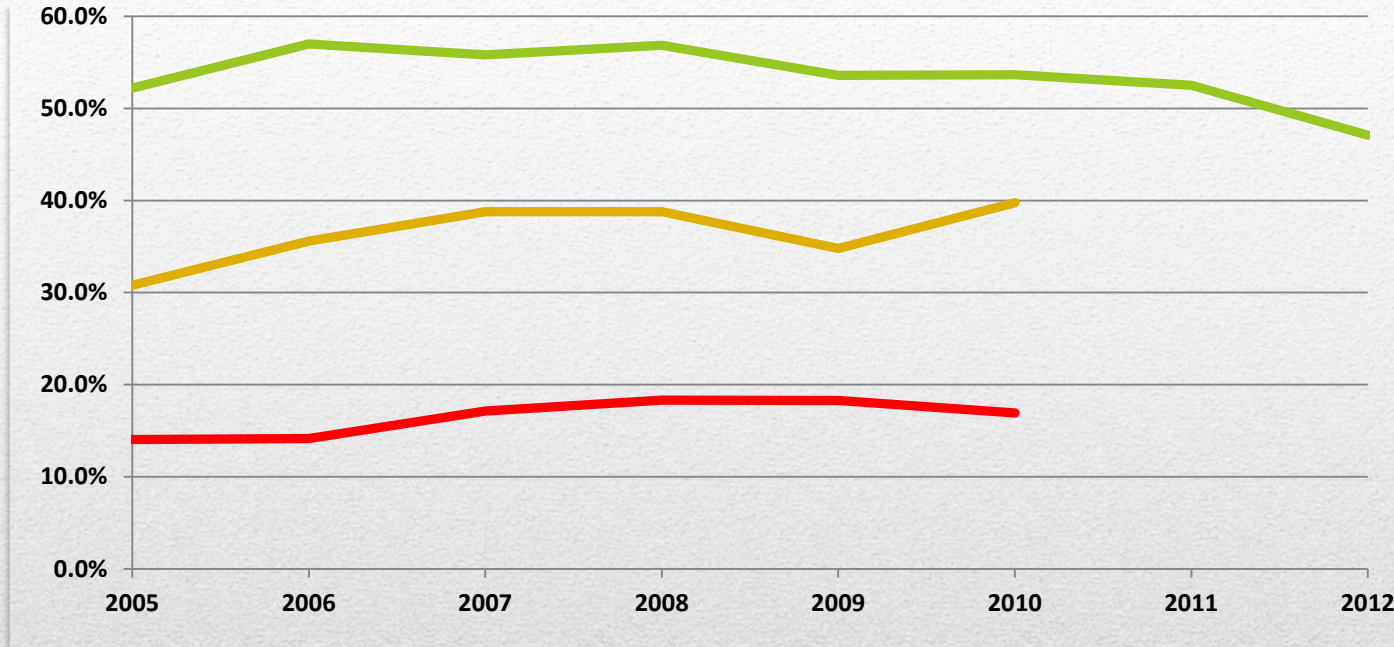


- UW-Parkside
- UW Colleges
- UW Comprehensives

*Excluding UW-Parkside

Remediation

First-time Students Requiring Remedial Math



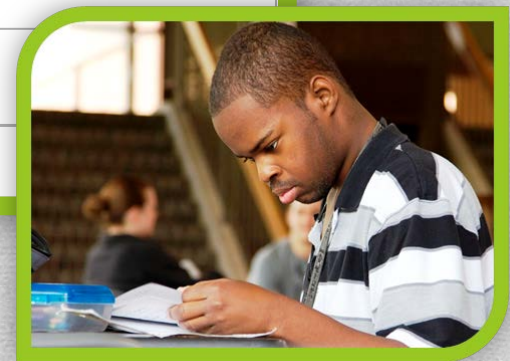
— UW-Parkside
— UW Colleges
— UW Comprehensives

*Excluding UW-Parkside

Remediation

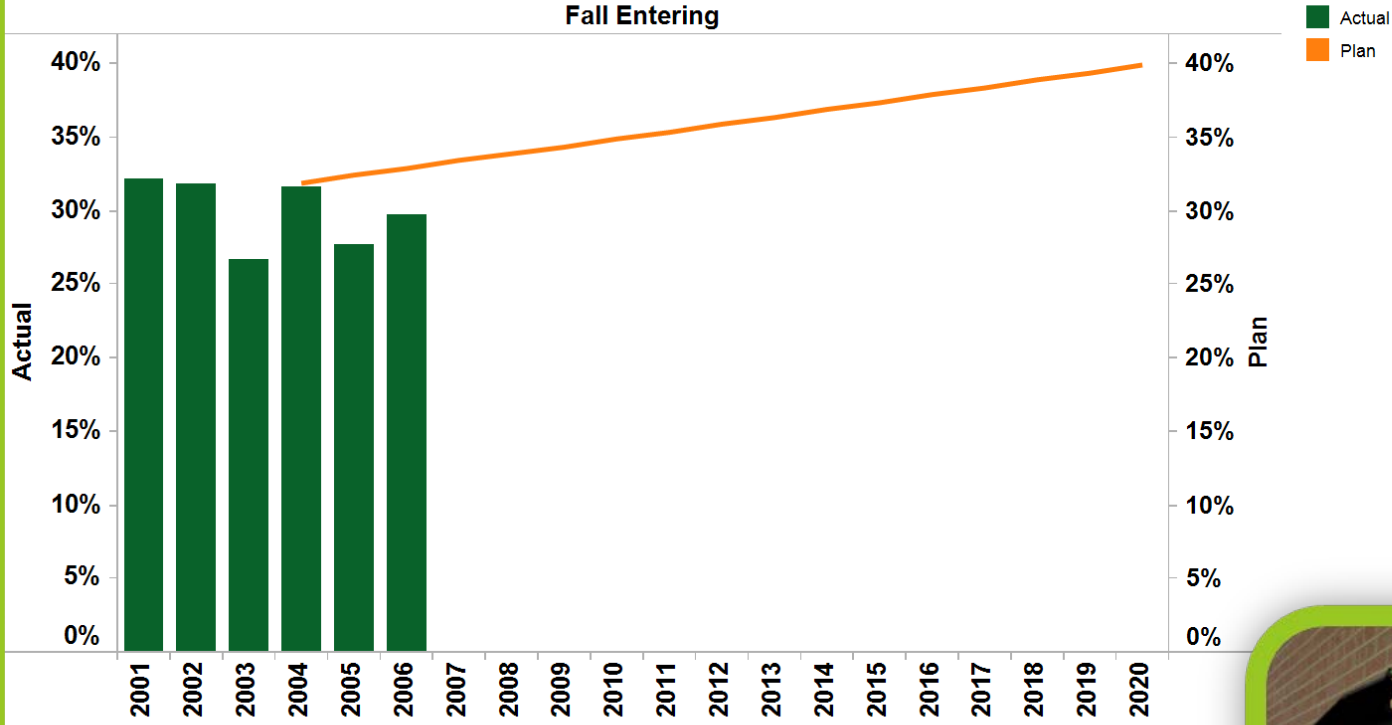
Progress on Student Retention

Cohort Year	Cohort	Cohort Size	1st Year spring	2nd Year fall	3rd Year fall
2008	UWP	833	84%	64%	49%
	SSS	50	96%	80%	72%
2009	UWP	788	86%	66%	50%
	SSS	56	98%	82%	64%
2010	UWP	711	85%	59%	42%
	SSS	42	91%	79%	60%
2011	UWP	677	86%	62%	
	SSS	43	95%	83%	
			0% 50% 100%	0% 50% 100%	0%

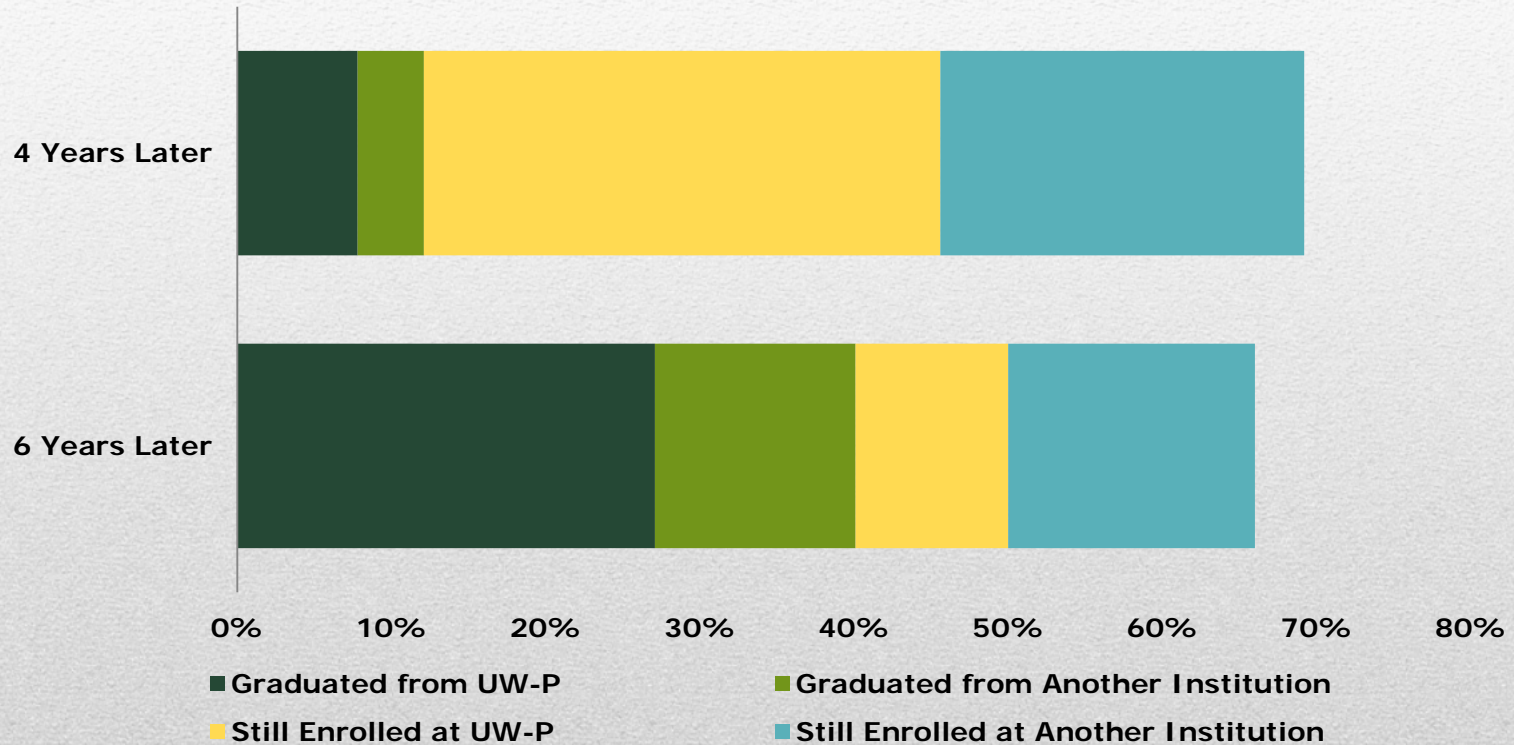


Retention Progress

6-Year Graduation Rates vs. Plan New Freshmen Entering Full-Time in Fall

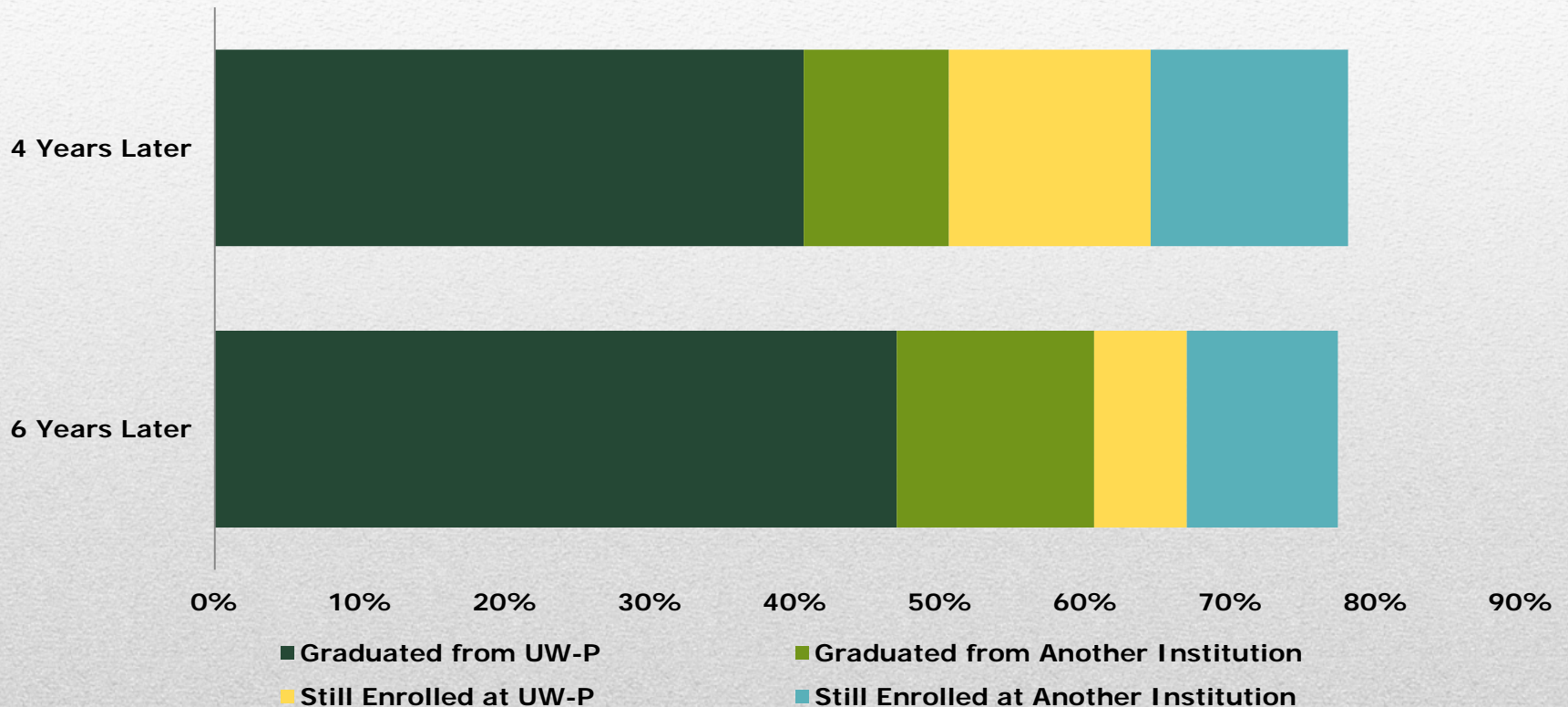


First-time, Full-time Students Starting Fall 2005



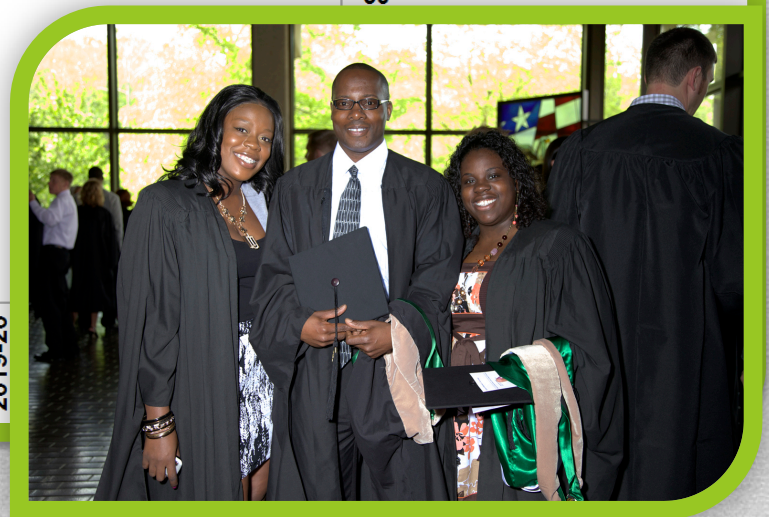
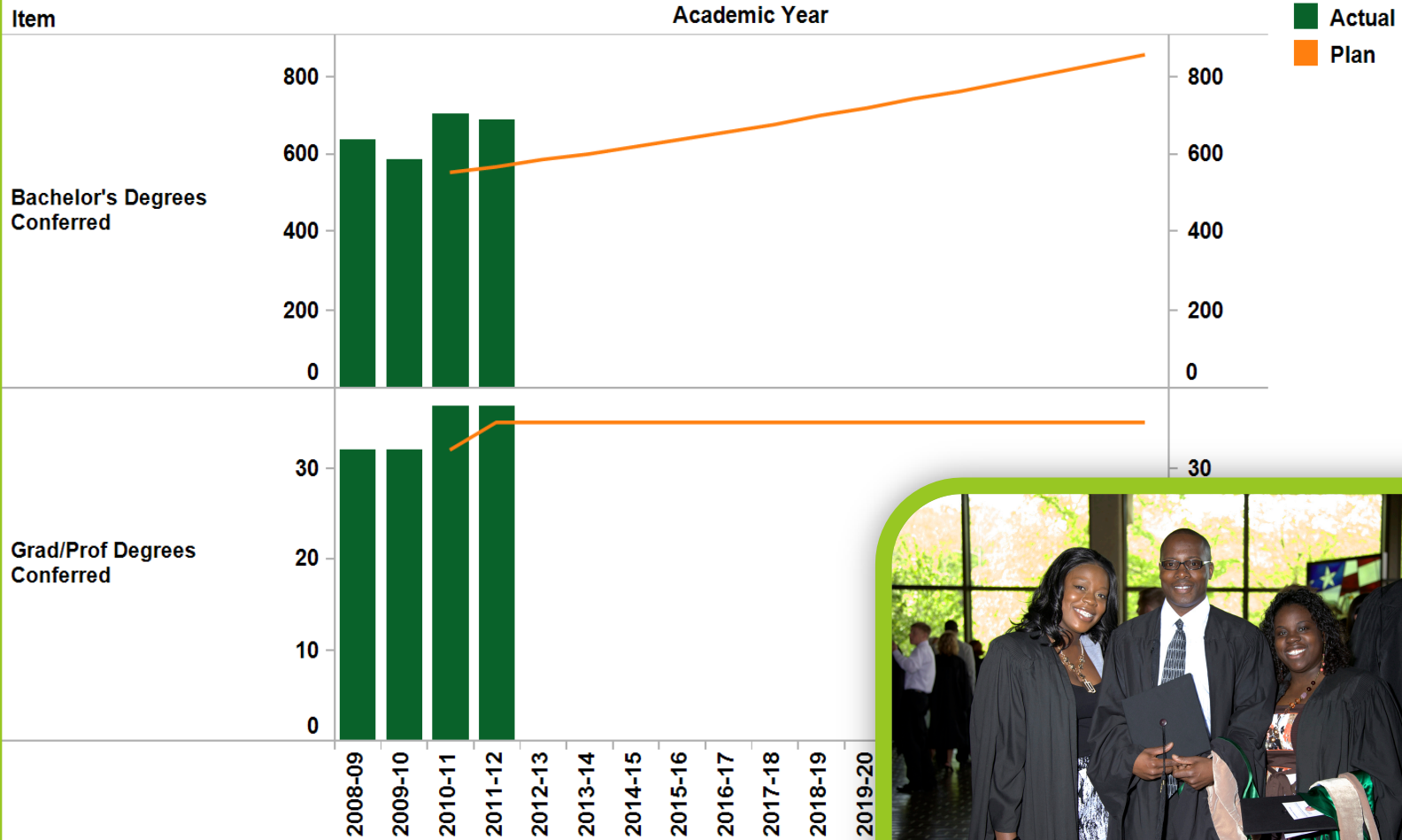
Student Success & Progress

Full-time Transfer Students Starting Fall 2005

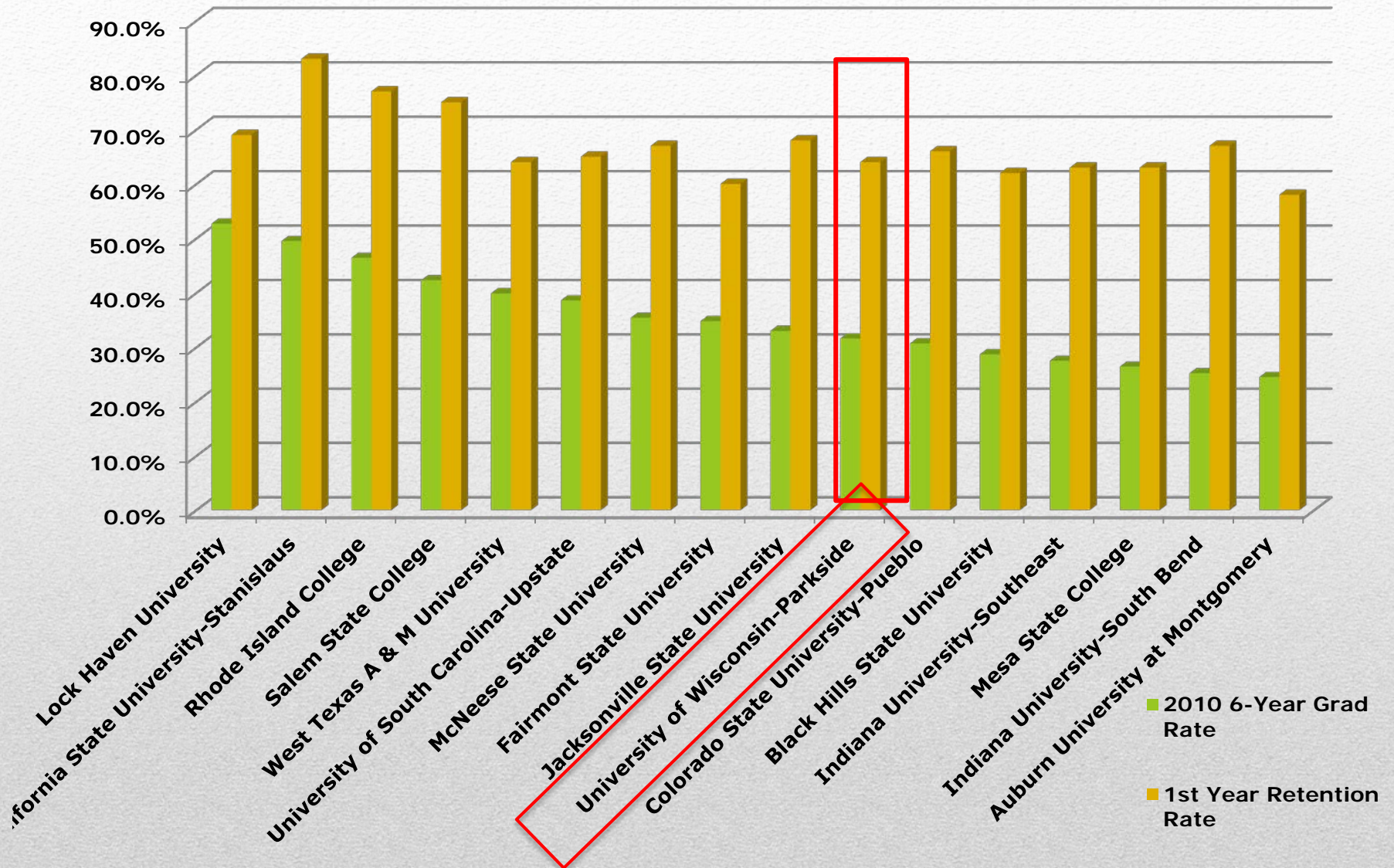


Student Success & Progress

Undergraduate and Graduate Degrees Conferred

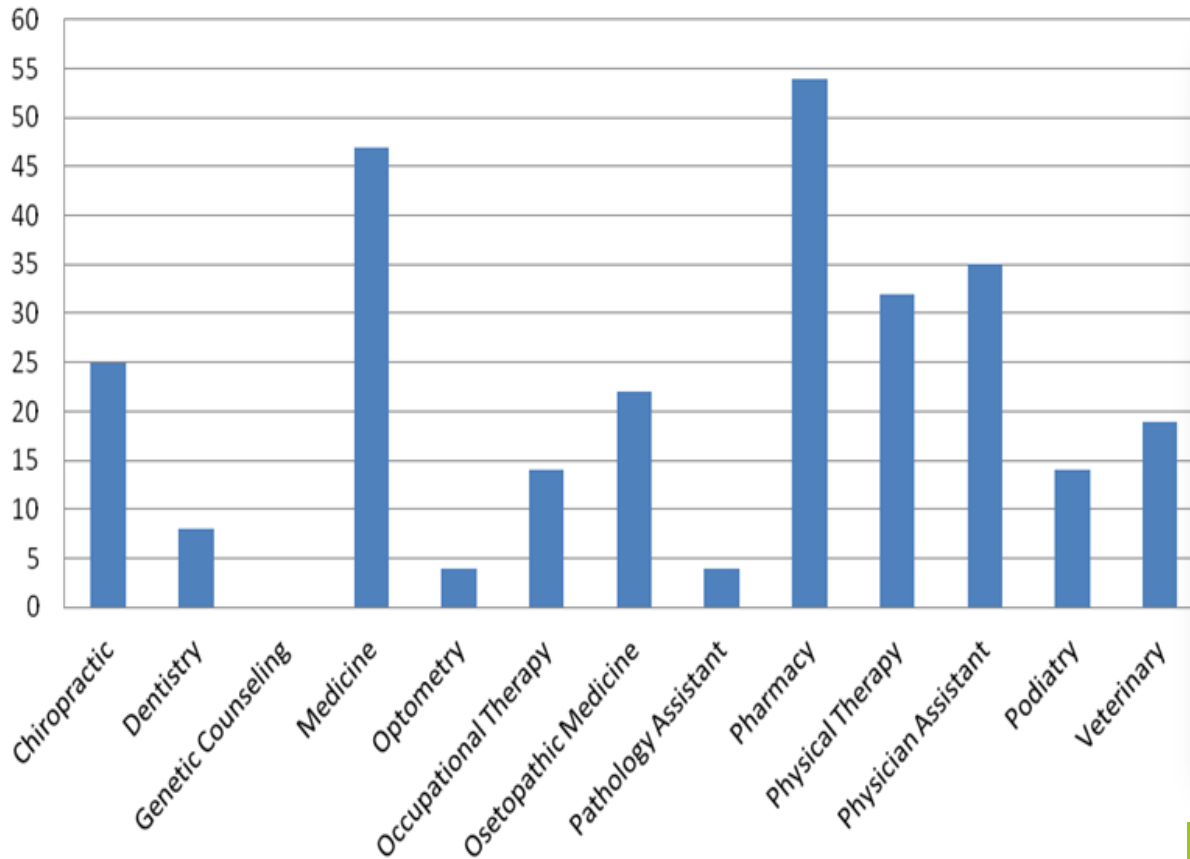


Degrees Conferred



Comparison to Peers

2001-2012 Student Placement



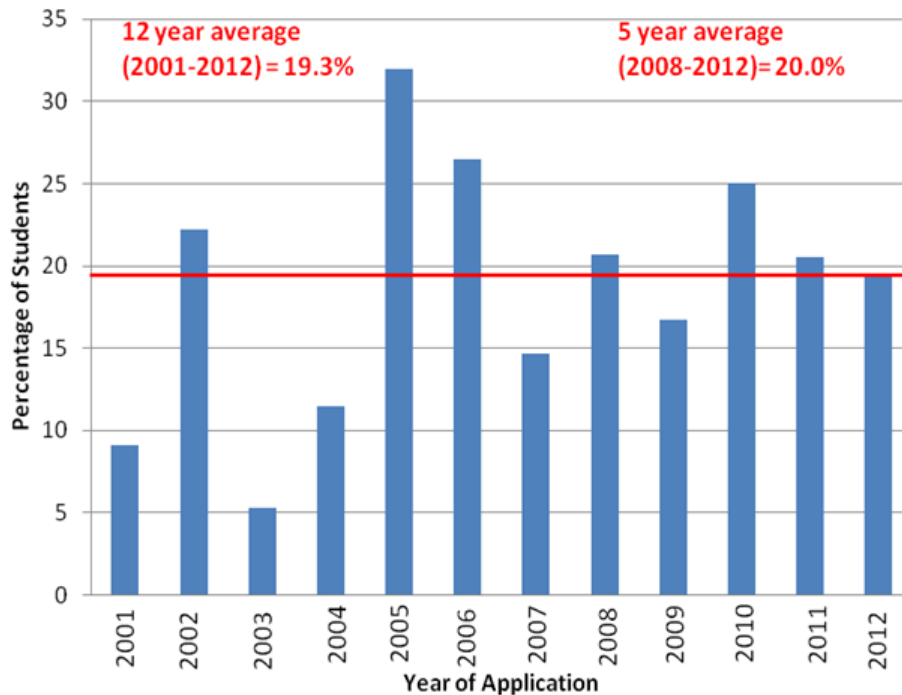
**89% Placement Rate
Professional Schools**

Point of Distinction

Going to Professional Schools: 20% Students of Color



Percentage of Students of Color Accepted into Professional Health Programs by Year



Hometown: Racine, Wis.
Major/Minor: Molecular Biology
& Bioinformatics / Chemistry

Point of Distinction

Integrated Planning and Intentional Actions

- UW-Parkside Promise – Strategic Plan
- Academic Plan - Aiming High Making Excellence Inclusive
- Graduate Parkside (Title III Grant)
- Strategic Enrollment Management Plan

UW-Parkside Values

Academic Excellence

Student Success

Diversity and Inclusiveness

Community Engagement

A Healthy and Vibrant
Campus Climate

Key Drivers



Enrollment Management

- Stand-Out at UW-Parkside
 - Robust Recruitment Plan
 - Showcase Our Students and Their Success
- Partnerships and Articulation Agreements
 - Dual Enrollment
 - Articulation Agreements
- Passport to Parkside
 - Engage Early
 - Connect to Campus via Social Media

Key Drivers

Graduate Parkside

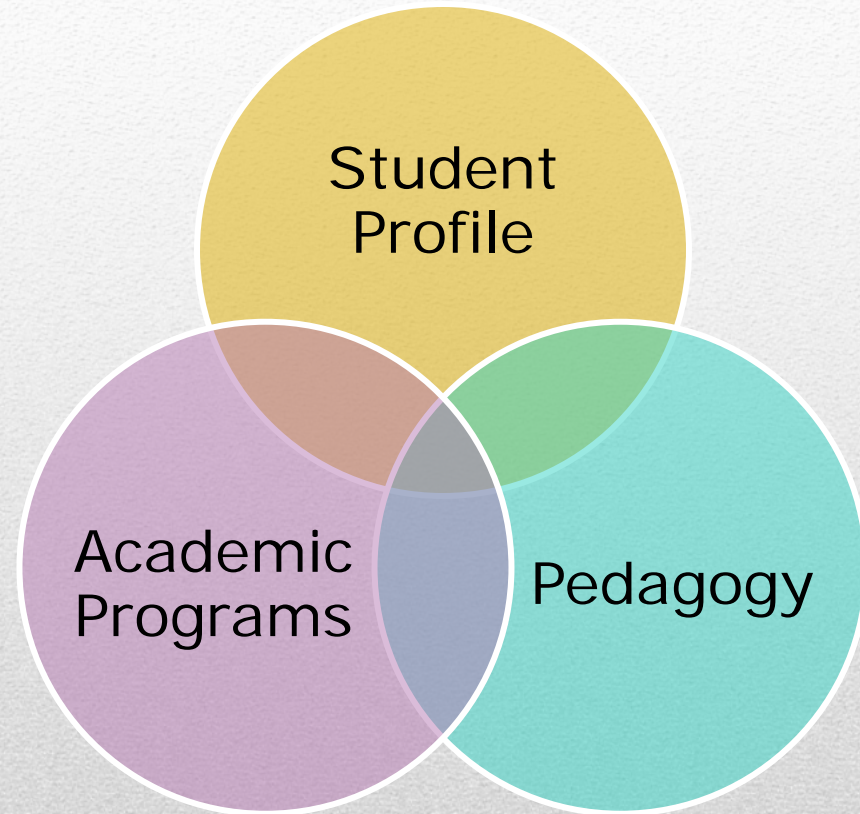
- Ranger Link
- Competency-Based Math
- Learning Communities
- Student Success Center
- Parkside Academic Success System



Key Drivers

Academic Plan

- New Academic Calendar
- 4-College Model
- New Academic Programs
- High Impact Practices
- ROAR – Ranger Orientation, Advising, and Registration



Key Drivers

FOCUS ON THE FUTURE

Strengths

- Shared Vision for *Student Success*
- Faculty and Staff Engagement
- Alignment of Planning and Resource Allocation

Weaknesses

- Diminishing Resources
- Competing Priorities
- Initiative Fatigue

Opportunities

- Partnerships with K-12, Technical Colleges, and Businesses
- Flex Option at UW-Parkside
- Outreach to Post-Traditional Learners

Threats

- Diminishing Resources
- Competitive Compensation
- Keeping up with Accelerated Pace of Change

ON THE MOVE

2013 GLVC East Division Champions!



STUDENT
SUCCESS
IS A TEAM
SPORT!

MARCH MADNESS
RANGER STYLE