

UW Colleges

A UW - Local Partnership

Developing human potential
Strengthening communities



University of Wisconsin Extension Centers



**UW-Marathon County
Pre-1959**

**UW-Sheboygan
Pre-1964**



Enabling Legislation

- **Local funding for facilities**
 - 1957 - County construction authorized
 - 1959 - Municipal construction authorized
- **State funding for equipment & furnishings**
 - 1959 - State Building Commission authorized

UW-Sheboygan Center

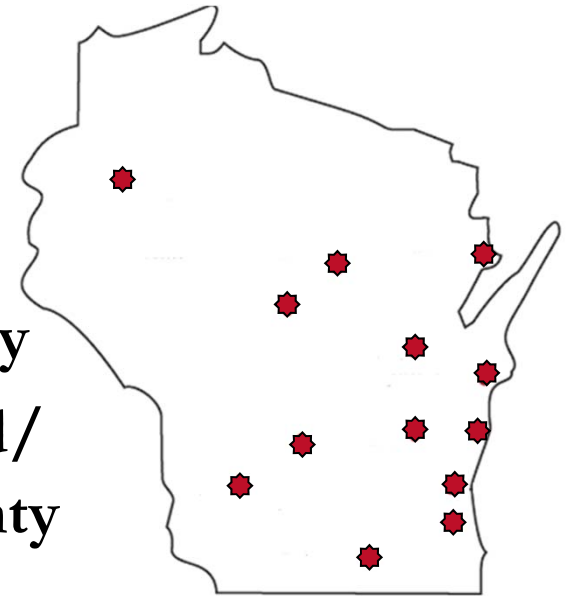
Established 1964



UW Colleges Partners

14 Counties – 3 Cities

- City of Baraboo/
Sauk County
- Barron County
- Fond du Lac County
- Outagamie County/
Winnebago County
- Manitowoc County
- Marathon County
- Marinette County
- City of Marshfield/
Wood County
- Richland County
- Rock County
- Sheboygan County
- City of West Bend/
Washington County
- Waukesha County
- UW System Board of Regents
- State of Wisconsin



The freshman/sophomore UW campuses

The State/Local Partnership Responsibilities

UW **⇒⇒⇒** **Staff and Program**

**County/City
& UW** **⇒⇒⇒** **Maintenance and Repair**

County/City **⇒⇒⇒** **Construction/Renovation
/Remodeling**

City & County Financial Support 2012

\$ 1.2 Million	Physical plant operations
\$.4 Million	Remodeling & repair, cash funded
\$ 11.6 Million	Debt service for remodeling, renovation & construction
<hr/>	
\$ 13.2 Million	City & County financial support in 2012

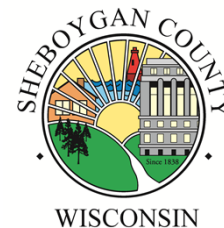
Sheboygan County Financial Support 2012

\$ 132,730	Physical plant operations
\$ 4,145,910	Debt service for remodeling, renovation & construction
<hr/>	
\$ 4,278,640	Sheboygan County financial support in 2012



UW-Sheboygan Capital Planning Process

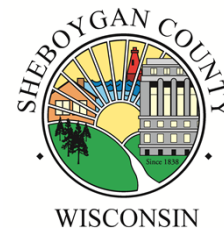
- **UW Colleges & UW-Sheboygan:**
Issues and themes identified & prioritized
- Long term plan with biennial updates: 2013-2019
- Sheboygan County Property, Finance, and Executive Committees review/discuss/recommend
- Movable equipment for major projects is requested in the UW/State capital budget



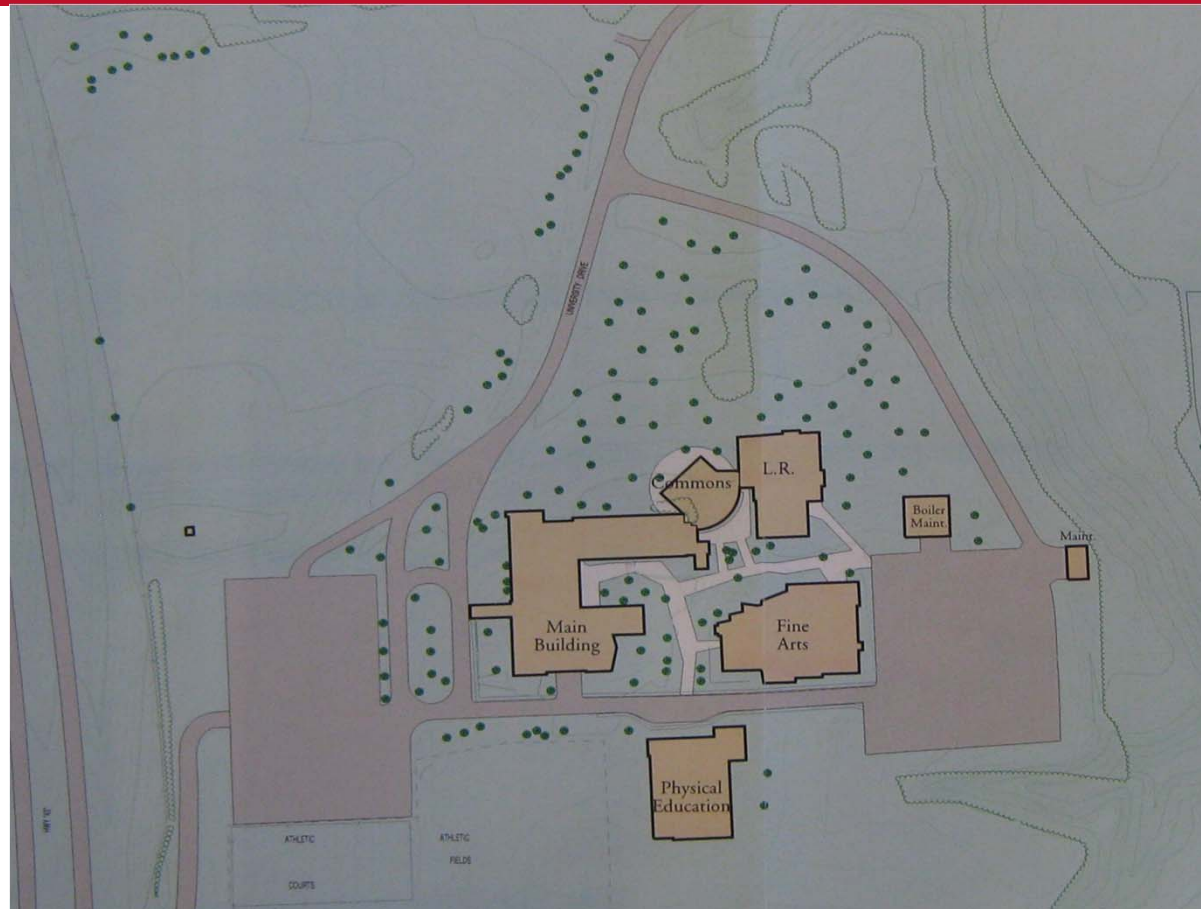
Plan Your Work & Work Your Plan

Master Planning Process

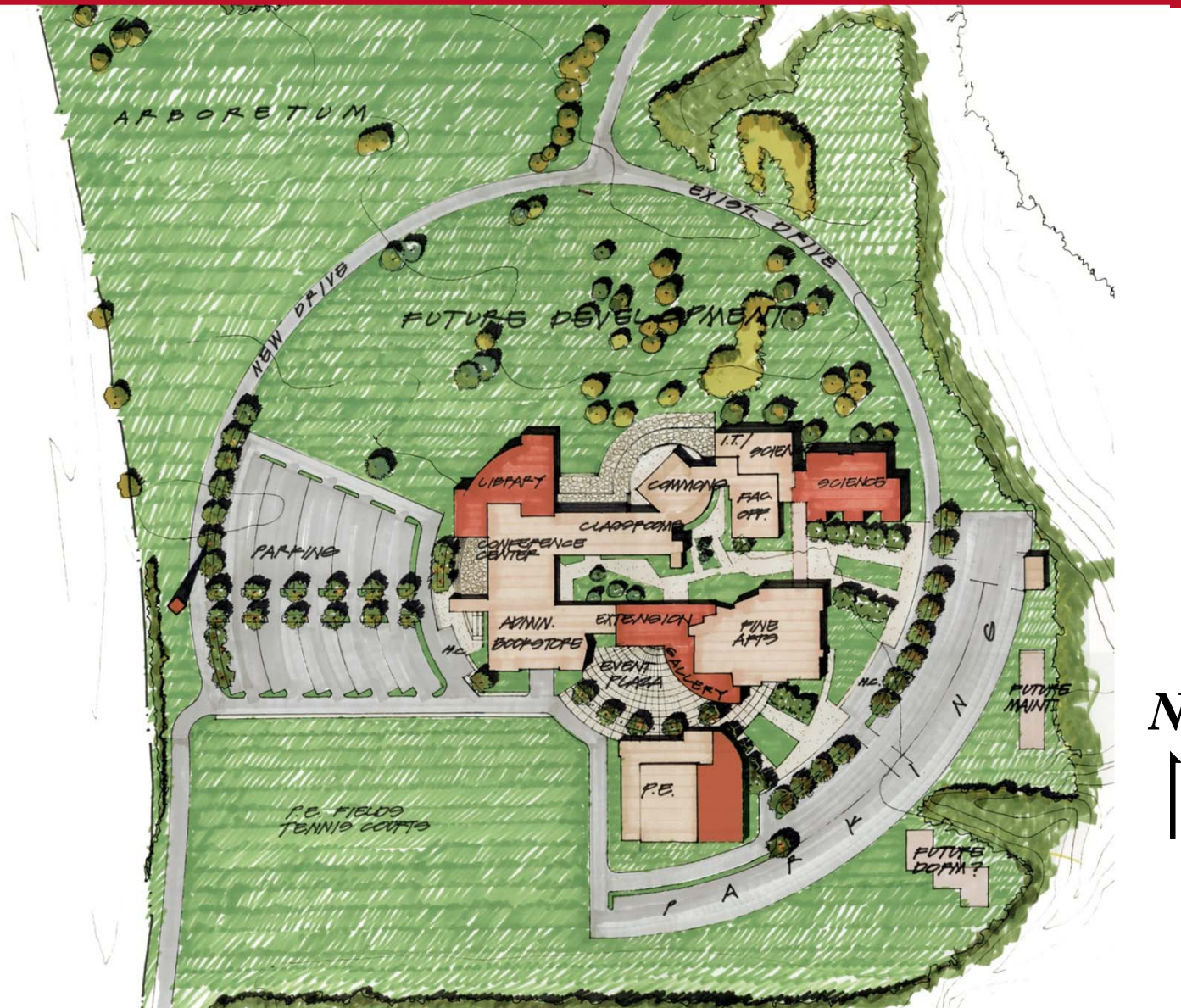
- UW-Sheboygan 10-year Master Plan 2001
- UW-Sheboygan 3-year Strategic Plan 2010
- UW-Sheboygan 10-year Master Plan 2012
- Sheboygan County Annual 5-year Capital Plan



UW-Sheboygan: 2001



Master Plan: 2001



Sheboygan County Financial Support

Since 1995

- \$12.8 million capital investment
- 3 major building projects
- \$40 million in total value



1995: Student Commons



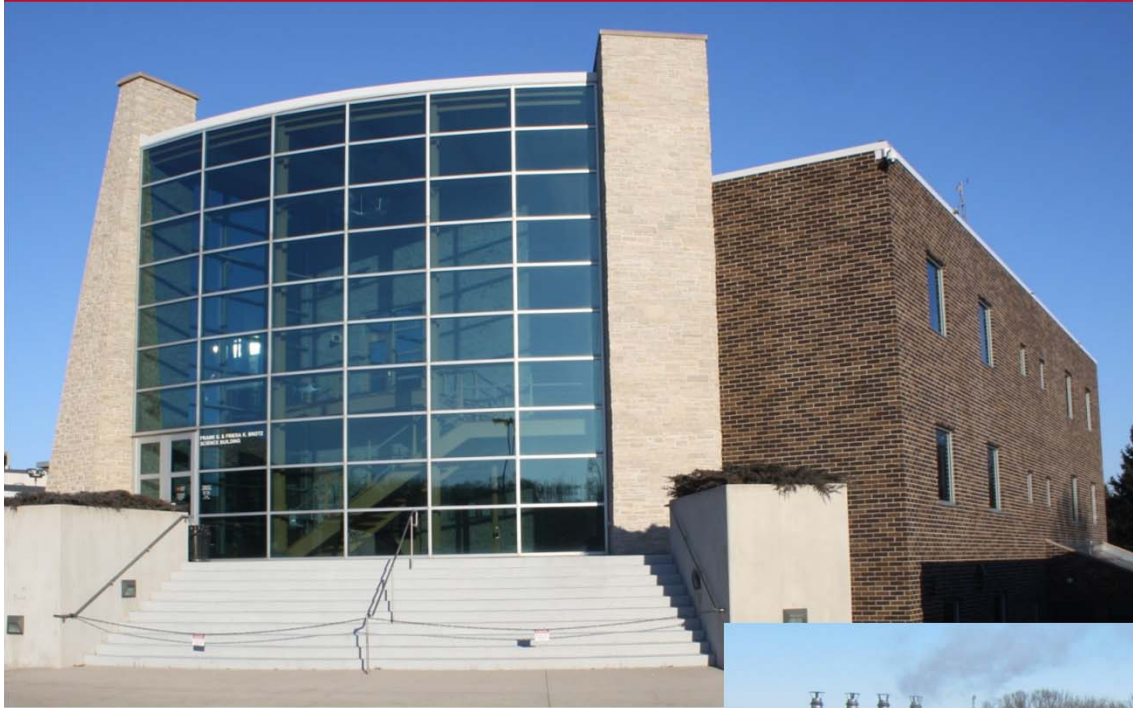
**12,600 Square Foot Addition:
Student Union, Café, Book Store, PC Labs
\$1.6 million**

2002: Mechanical Upgrade



**Heating Systems & Controls,
Keycard, Fire Alarm, PA & Lighting
\$1.9 million**

2004: Brotz Science Building



**27,000 Square Foot
Addition
\$5.5 million**



2004: Science Interiors



2004: Main Building Renovation



**Created Centralized Classrooms
From Former Science Labs**

2005-2011: Roofs & ADA Restrooms



**\$1 million
Total Projects**



2006: ACUITY Technology Center



2006: ACUITY Technology Center



**28,000 Square Foot Addition
Library, PC Labs, Study Rooms,
Distance Education and Meeting Rooms
\$6.5 million**

2006: Technology Center Interiors

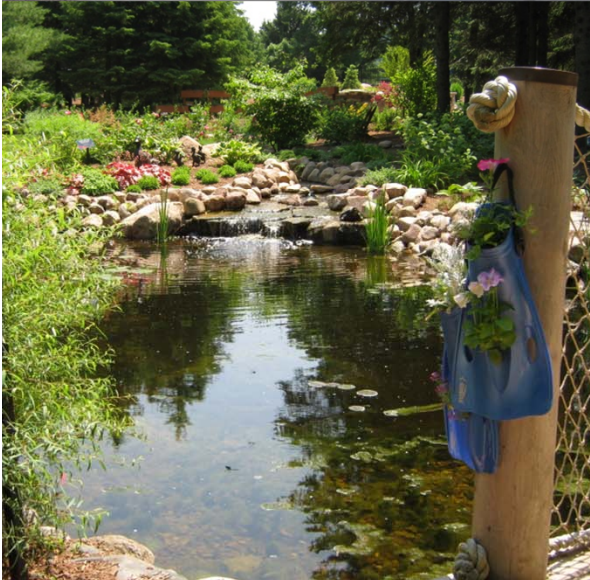


2007: UW-Extension



**12,000 Square Foot Remodel of Vacated Library
Space to Move UW-Extension on Campus
\$1.2 million**

2010: Bookworm Gardens

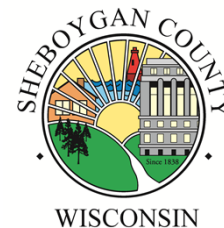


**Non-Profit
\$2 million
Story book
Gardens
On
Campus
Property**



Enhanced Opportunities and Environment for Learning

- Technology provides expanded programmatic and course offerings
- Library provides state-of-the-art technology and study space options in an inviting environment
- Science facilities provide an improved environment for hands on and “discovery”-oriented learning



Enhanced Opportunities and Environment for Learning

- Commons provides a space for students to engage on campus outside of classes
- UW-Extension brings large numbers of community members to our campus and new opportunities for collaborations with students and faculty

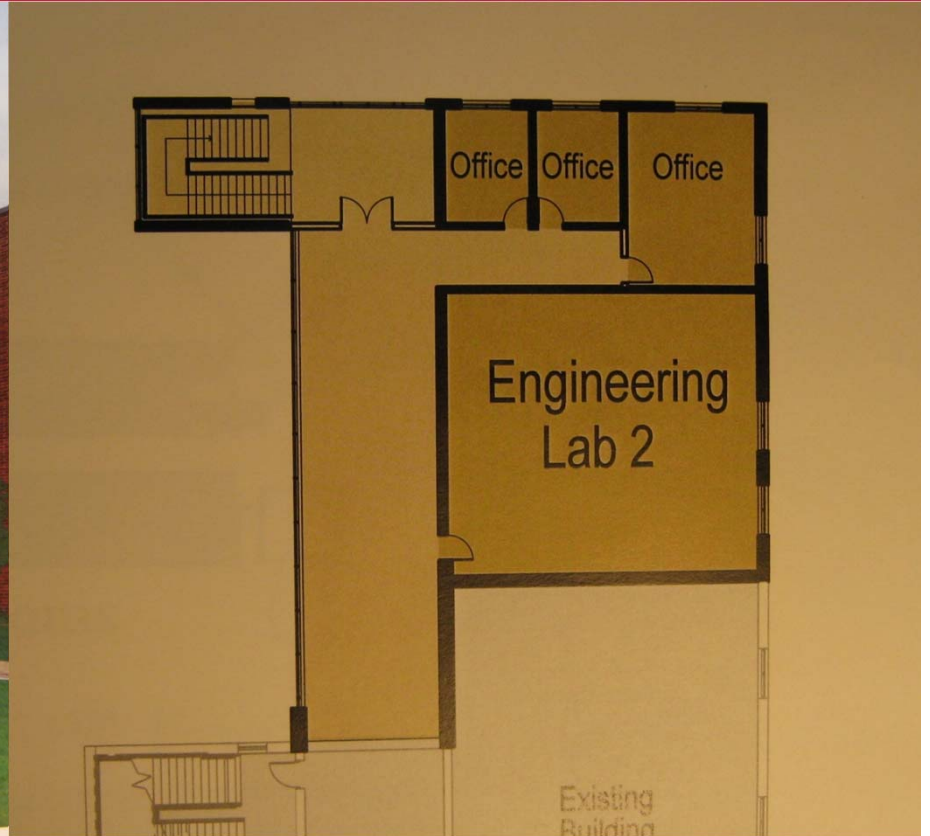


Looking to the Future: Master Plan Update 2012

- **Addition of the new Engineering Building**
- **Modernization and Expansion of the Fine Arts, Music and Theater Facilities**
- **Expansion and Updating of the Physical Education/Athletics Facilities**
- **Campus Site Development and Improvement of Vehicular Flow**



Engineering Addition: 2013-2015

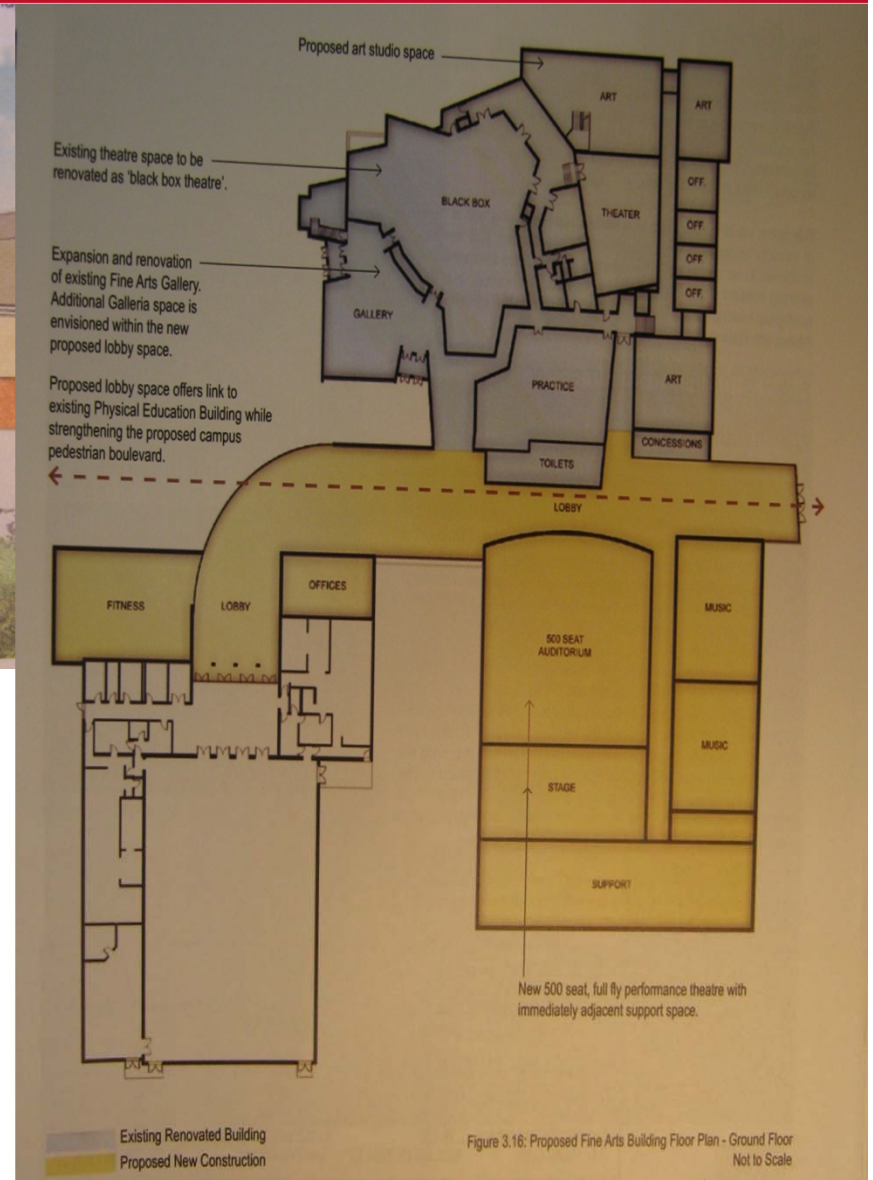


Proposed Preliminary Design
\$1.9 Million Addition is part of the County Capital Plan

Theatre Building: Unapproved To Date



30,000 Square Foot Building
24,000 Square Foot Renovation
\$10.3 Million Project



Proposed Site Plan: 2012

Math

Engineering

Fine Arts & Theatre



Gateway

University Center

Physical Education

UW Colleges

A UW - Local Partnership

Developing human potential
Strengthening communities

