



Construction: Underway & Beyond

Christy L. Brown

Vice Chancellor
Finance & Administrative Affairs

Vision

**Michael R. Lovell, Chancellor
2012**

We will be a top-tier research university that is the best place to learn and work for students, faculty and staff, and that is a leading driver for sustainable prosperity.

We will accomplish this through a commitment to excellence, powerful ideas, community and global engagement, and collaborative partnerships.

UW Milwaukee Select Mission Statement

To fulfill its mission as a major urban doctoral university and to meet the diverse needs of Wisconsin's largest metropolitan area, the University of Wisconsin–Milwaukee must provide a wide array of degree programs, a balanced program of applied and basic research, and a faculty who are active in public service. Fulfilling this mission requires the pursuit of these mutually reinforcing academic goals.

Master Plan 2010: Key findings



- Space deficit of over 1 million ASF /1.5 million GSF
- Critical Space Needs
 - Classrooms
 - Laboratory
 - Research Growth Mission
 - Student Life

UW-Milwaukee Initiative

\$240m investment

Biennium	GFSB	PRSB	Gift/Grant	BTF	Total
2009-11	\$43.4	\$55.6	\$60.0	\$0.5	\$159.5
2011-13	\$50.0			\$0.5	\$50.5
2013-15	\$30.0				\$30.0
Totals	\$123.4	\$55.6	\$60.0	\$1.0	\$240.0

Current Projects

Project	GFSB	PRSB	Gift/Grant	BTF	Total
School of Freshwater Science Research	\$50.0		\$20.0		\$70.0
Kenwood Interdisciplinary Research Complex (IRC)	\$73.4		\$1.6		\$75.0
Northwest Quadrant (CSM) purchase *\$5m prior funds		\$15.1		\$1.0	\$16.1
Zilber School of Public Health		\$12.5			\$12.5
Children's Center		\$12.0			\$12.0
Other (NWQ redevelopment)		\$16.0	\$38.4		\$54.4
Totals	\$123.4	\$55.6	\$60.0	\$1.0	\$240.0

Status of Milwaukee Initiative

Northwest Quad Purchase(NWQ) ■ Completed

Joseph J. Zilber School of Public Health ■ Completed

School of Freshwater Science ■ Ground Breaking-Summer 2012

Children's Center ■ Construction starts Summer/Fall 2012

Kenwood IRC ■ Ground Breaking-Summer/Fall 2012



Capital & Lease Projects Map

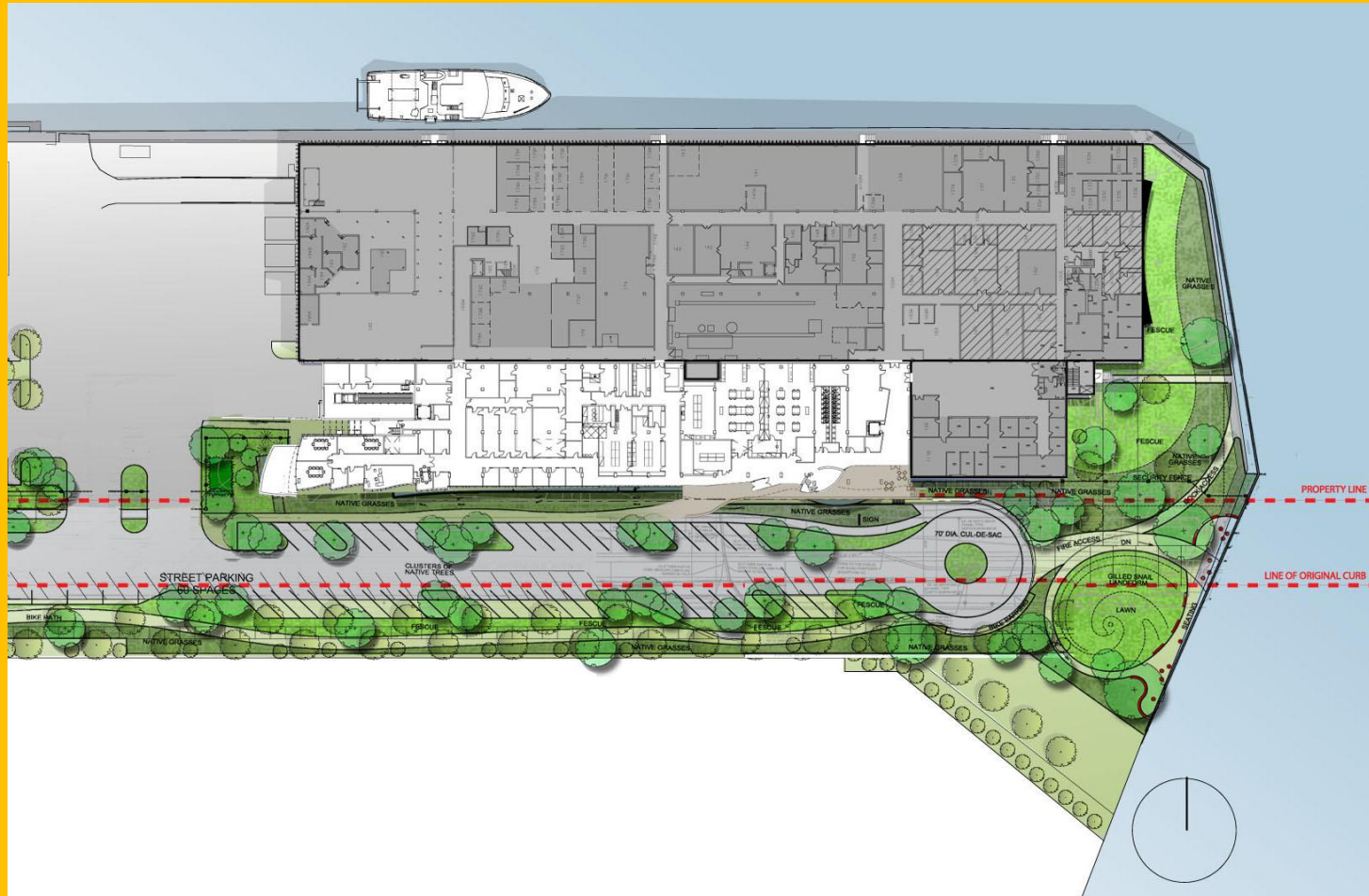
1. Northwest Quadrant Redevelopment Planning
2. Zilber School of Public Health
3. Kenwood Interdisciplinary Research Center
4. Water Accelerator Building
5. School of Freshwater Science
6. Children's Learning Center
7. Innovation Accelerator Building
8. Integrated Research Center at Innovation Park
9. Cozzens-Cudahy Research Center



School of Freshwater Sciences

- \$50.0 million
- Bidding July 2012
- Opens Winter-Spring 2014
- Only one of its kind in western hemisphere
- Multi-disciplinary
- Research-commercialization connections

School of Freshwater Sciences



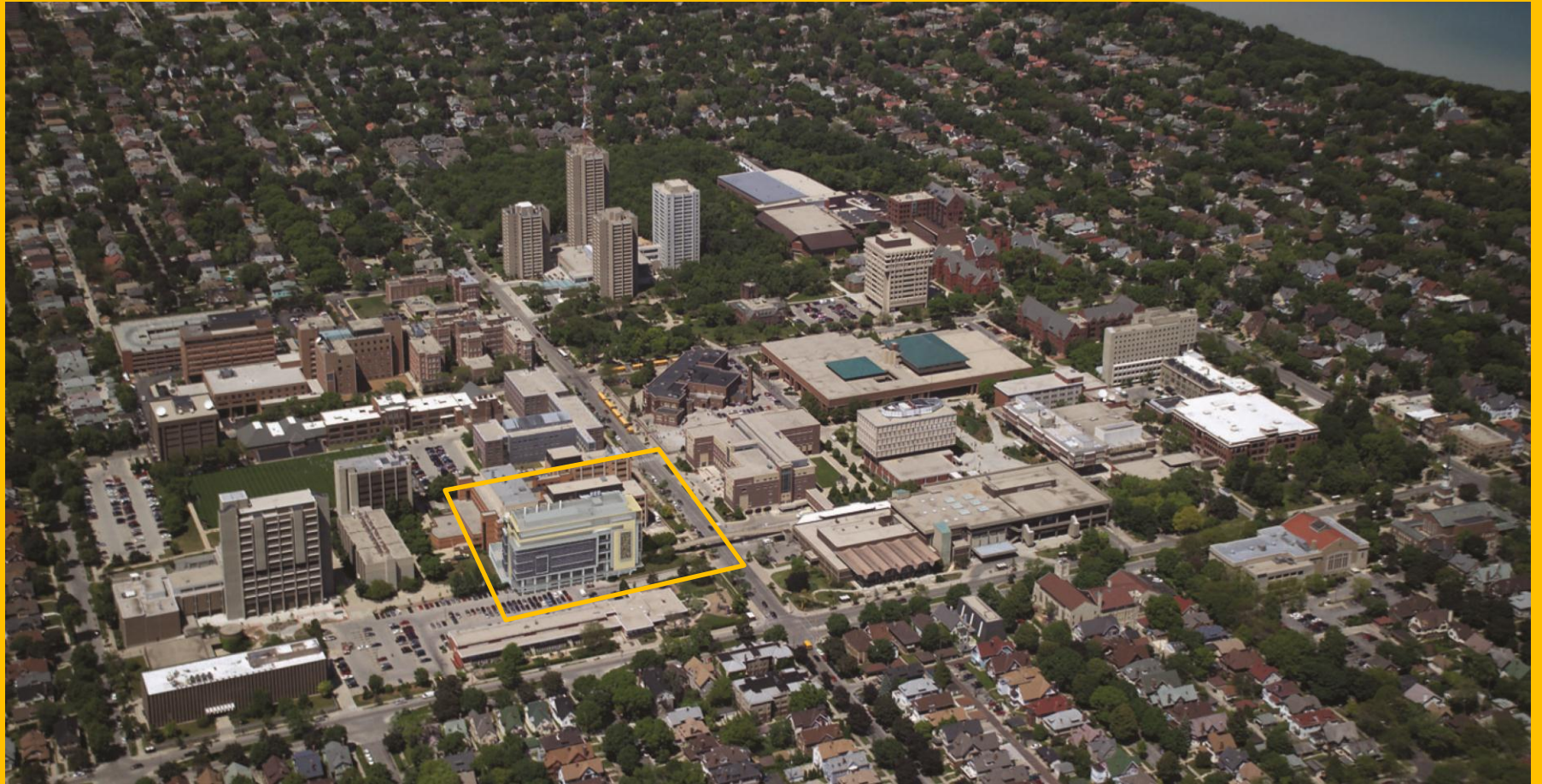
University of Wisconsin Milwaukee

School of Freshwater Science



Kenwood Interdisciplinary Research Complex KIRC

- \$80.0 Million
- 35% Design Review June 2012
- Opens December 2014
- Research Facility for Physics and Zilber School of Public Health
- Core Facilities Will Be Used University-wide



■ Kenwood IRC (phase I building)

4A



Joseph J. Zilber School of Public Health

- \$12.5 Million purchase cost
- Opens July 2012
- \$10.0 Million Donation from the Zilber Foundation
- Collaborative Space with City of Milwaukee Health Department

Joseph J. Zilber School of Public Health

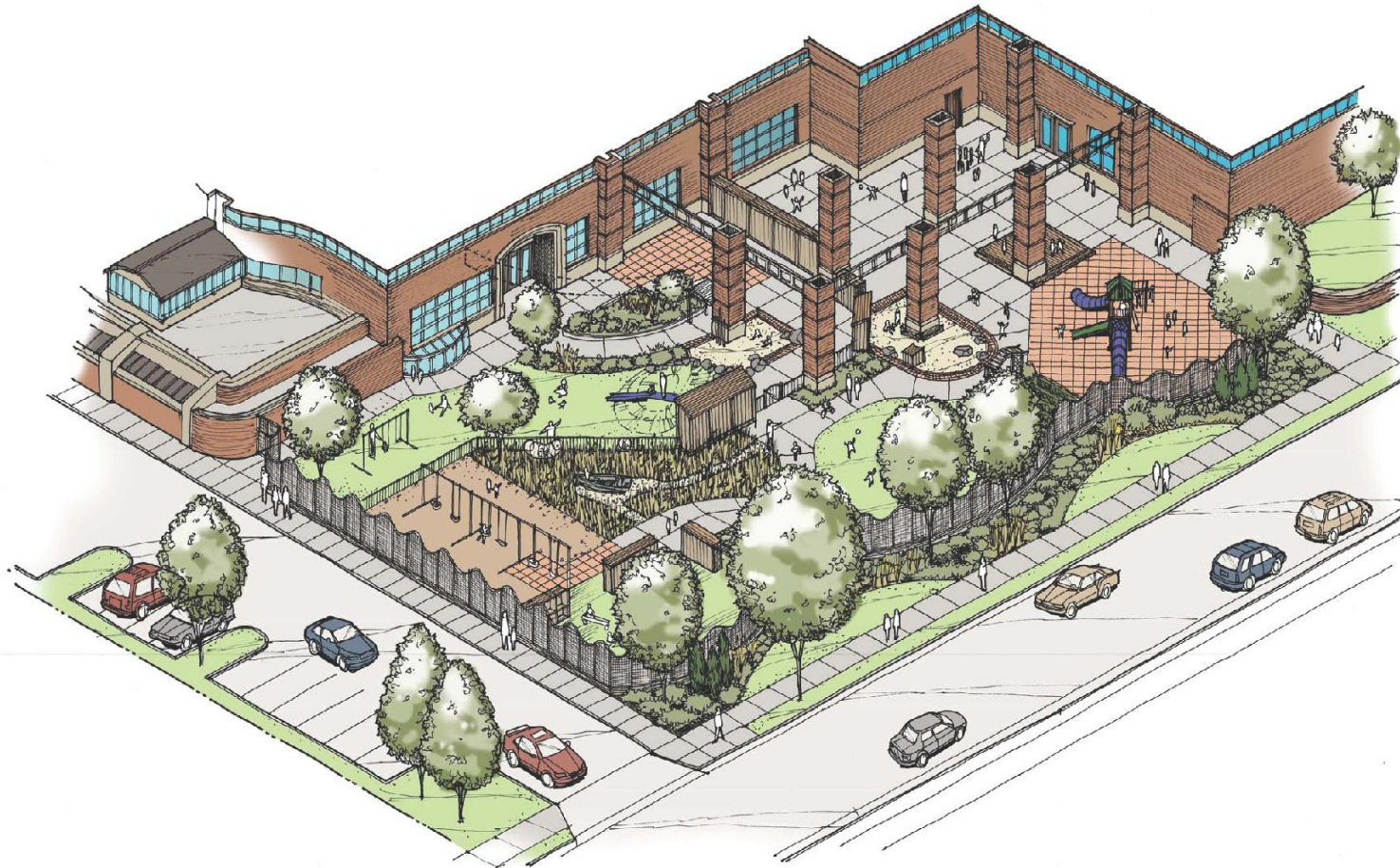




Children's Learning Center

- \$11.98 Million Capital Cost
- 35% Design Review June 2012
- Opens August 2013
- Serves UWM Students, Faculty and Staff, and Alumni Association members (space permitting)
- Faculty and staff from various Academic Units Utilize the Children's Learning Center for Training and Research

Children's Learning Center



1 SOUTH PLAY AREA RENDERING
SCALE: 3/8" = 1'-0"



Leased Spaces

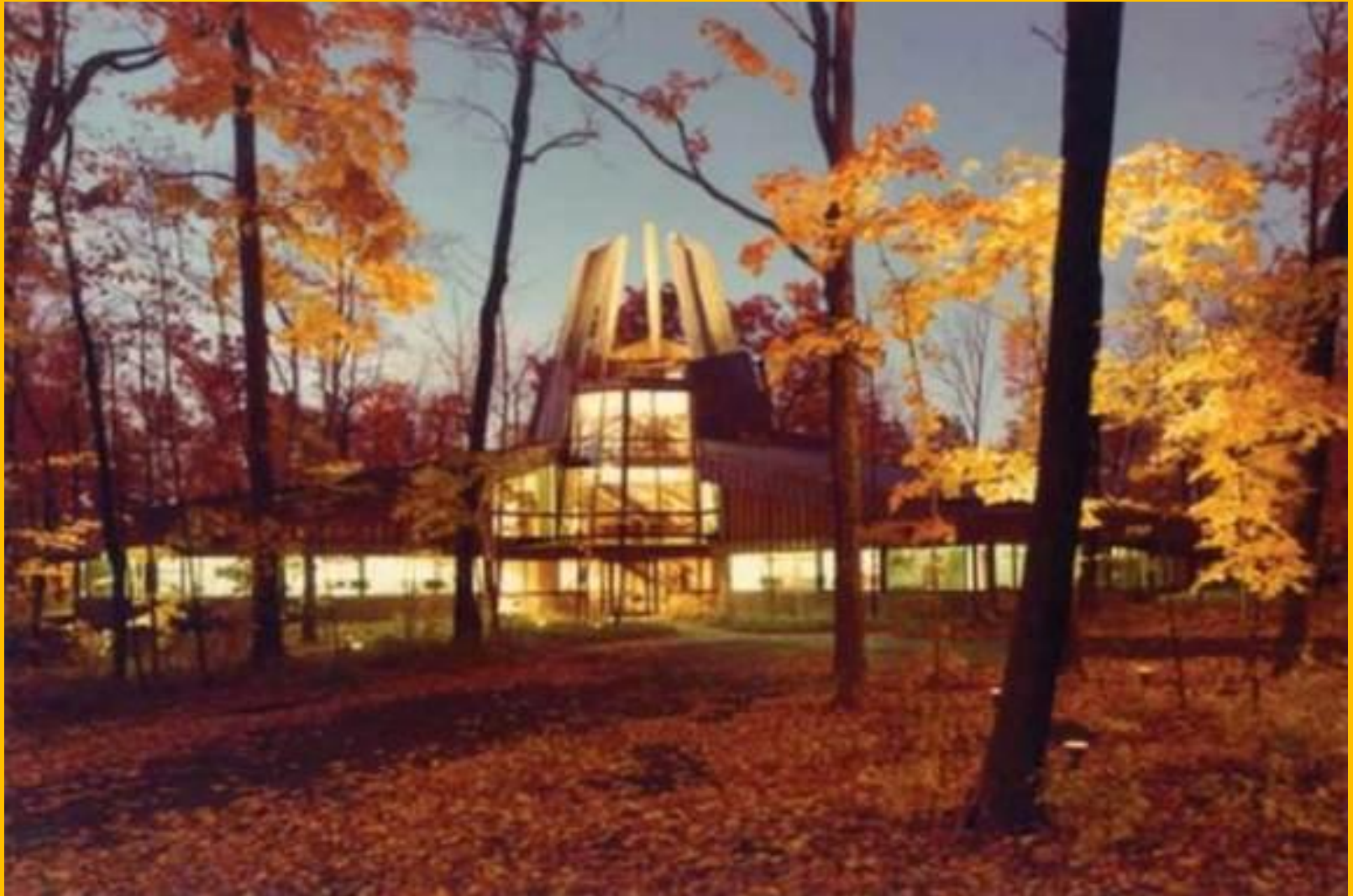
- Facilitates Partnership with Area Businesses for Research and Development
- Facilitates Commercialization Opportunities
- Facilitates Community Access and Outreach
 - Innovation Accelerator
 - Water Accelerator
 - Cozzens Cudahy Center



Innovation Accelerator at Innovation Park



Water Accelerator



Cozzens Cudahy Center

Future Capital Projects

- Integrated Research Center, Innovation Park
- NWQ Redevelopment
 - School of Education/Teaching Learning Center
 - Honors House
 - School of Information Science
 - Student Health Center
- Student Union

Integrated Research Center Innovation Park

- 80+ acre Research Park in Wauwatosa Owned by UWM Real Estate Foundation
- IRC Will be an Academic Research Building
- Connection to Businesses
- Collaboration With Current and Future Partners at Milwaukee County Regional Medical Center - Including Medical College of Wisconsin, Froedtert Hospital, Children's Hospital, Blood Research Institute

University of Wisconsin - Milwaukee
**Integrated Research Center
at Innovation Park**

**INNOVATION
PARK**

**INTEGRATED
RESEARCH
CENTER**

**BLOOD
CENTER OF
WISCONSIN**

**MEDICAL
COLLEGE OF
WISCONSIN**

**CURATIVE
CARE
NETWORK**

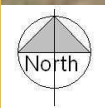
**CHILDREN'S
HOSPITAL**

**MILWAUKEE
COUNTY
RESEARCH PARK**

**GE
HEALTHCARE**

**FROEDTERT
HOSPITAL**

**MILWAUKEE
COUNTY REGIONAL
MEDICAL CENTER**



Northwest Quadrant

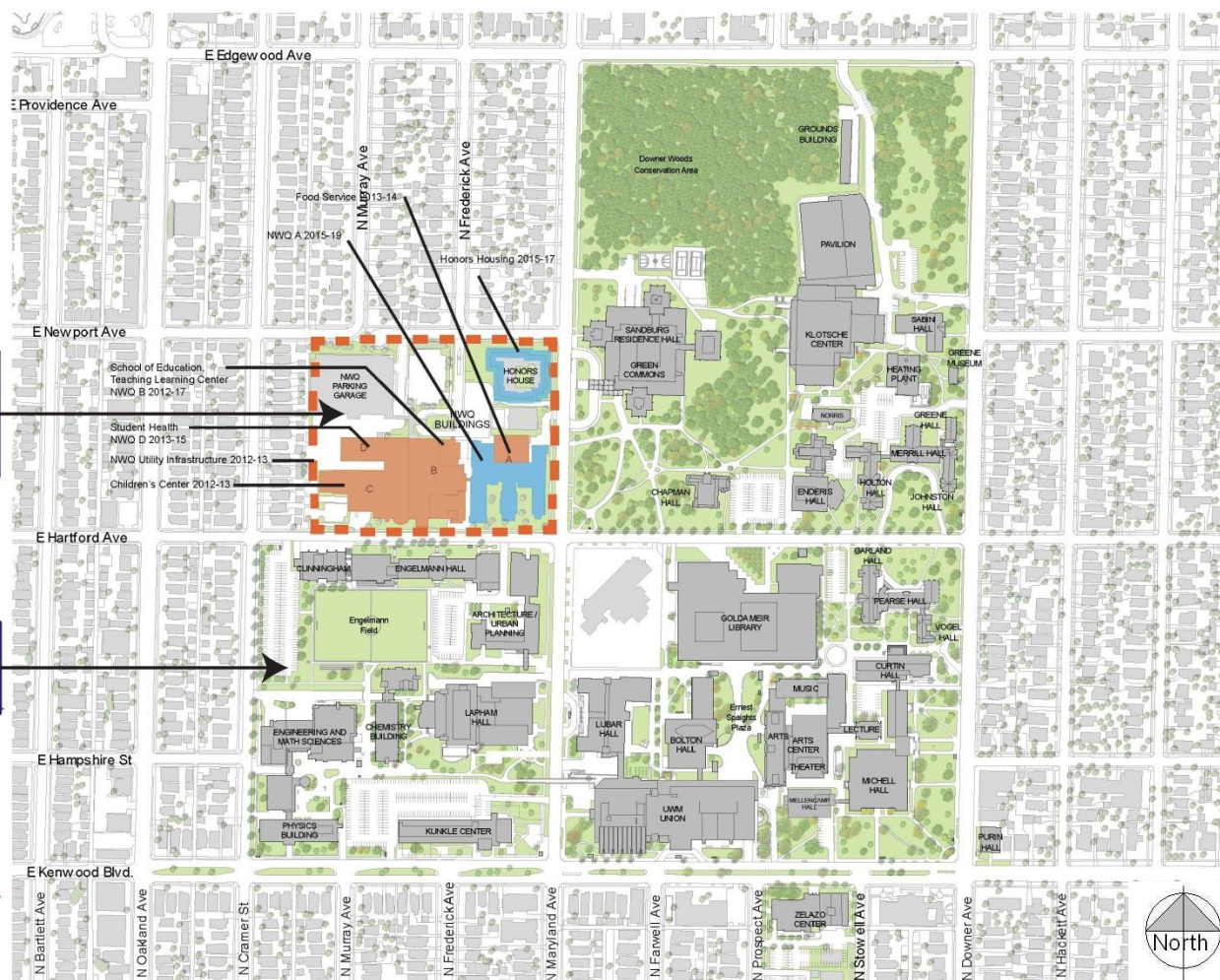
- Purchased for \$20.15 million
- Detailed Redevelopment Plan Underway
- 880,000 GSF of Potential Expansion Space
Toward Curing UW Milwaukee's 1.5 Million
GSF Space Deficit
- Already Being Used (partial occupancy)

Northwest Quadrant Redevelopment Planning

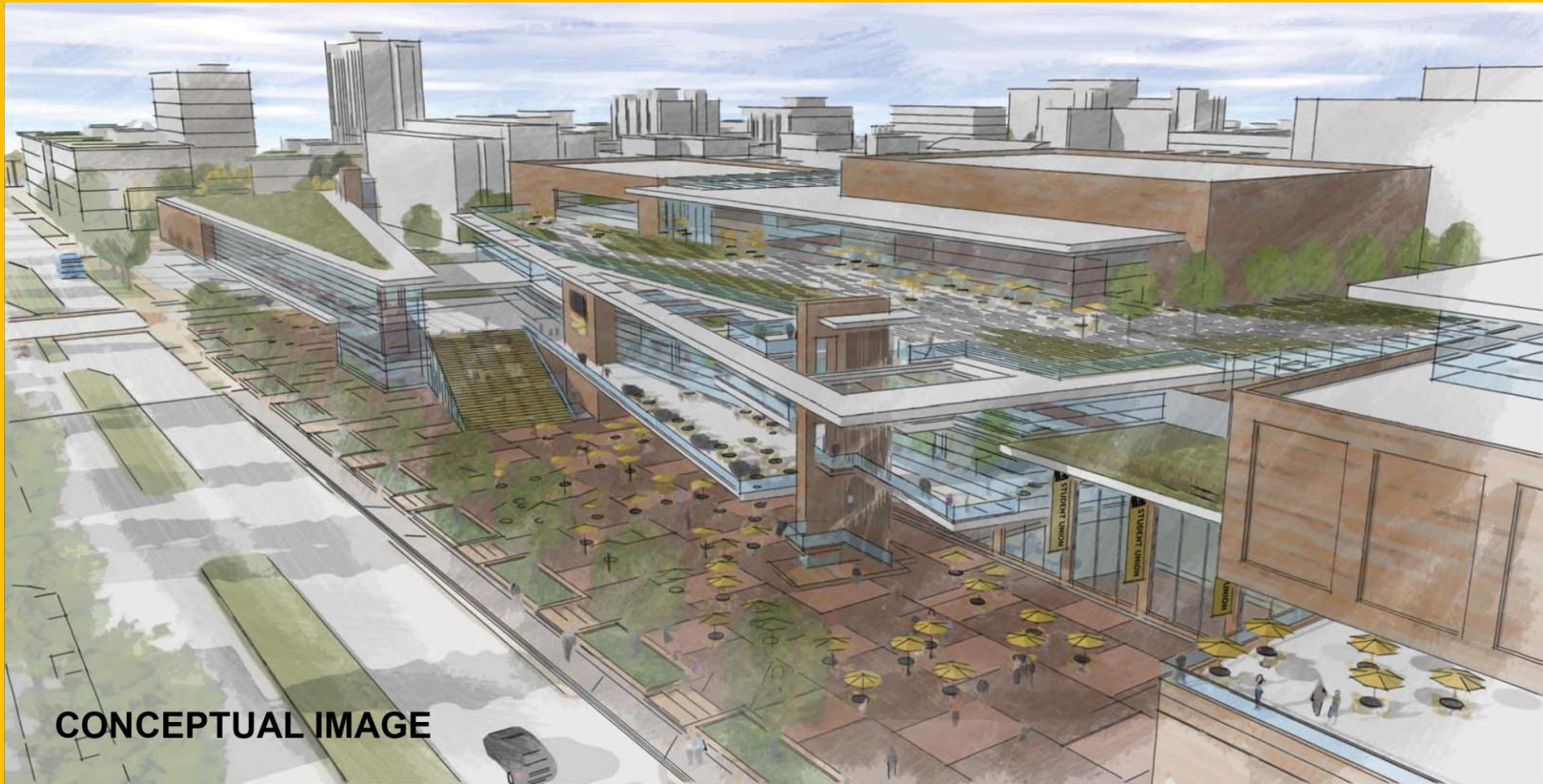
Northwest Quadrant
(Former CSM Campus):
10.9 acres

Kenwood Campus:
92 acres

The purchase of the former
CSM campus increases
building square footage by
20% on the Kenwood Campus



Student Union



BUILDING A BETTER **WISCONSIN**

- Provide Over 4000 Construction Jobs
- Enable and Facilitate Significant Growth in Sponsored Research
- Enable and Facilitate New Partnerships With Public and Private Entities that Leverage Growth for Wisconsin
- Research Will Lead to New Private Sector Jobs in Wisconsin

BUILDING A BETTER WISCONSIN





POWERFUL
IDEAS

**PROVEN
RESULTS**

SM