

UW System Preliminary Enrollments Fall 2012



MARK A. NOOK
SENIOR VICE PRESIDENT FOR ACADEMIC AND STUDENT AFFAIRS

PRESENTATION TO THE UW SYSTEM BOARD OF REGENTS
OCTOBER 5, 2012

Outline

2

- **Systemwide Enrollment Update**
 - Total Enrollment – Significant Decline in Graduate Student Enrollments
 - Degrees Conferred – Good News with Negative Impacts on Enrollment
 - Freshmen Enrollments – The Recruitment Challenge for the Next Several Years
- **UW Madison Enrollment update – Paul DeLuca**

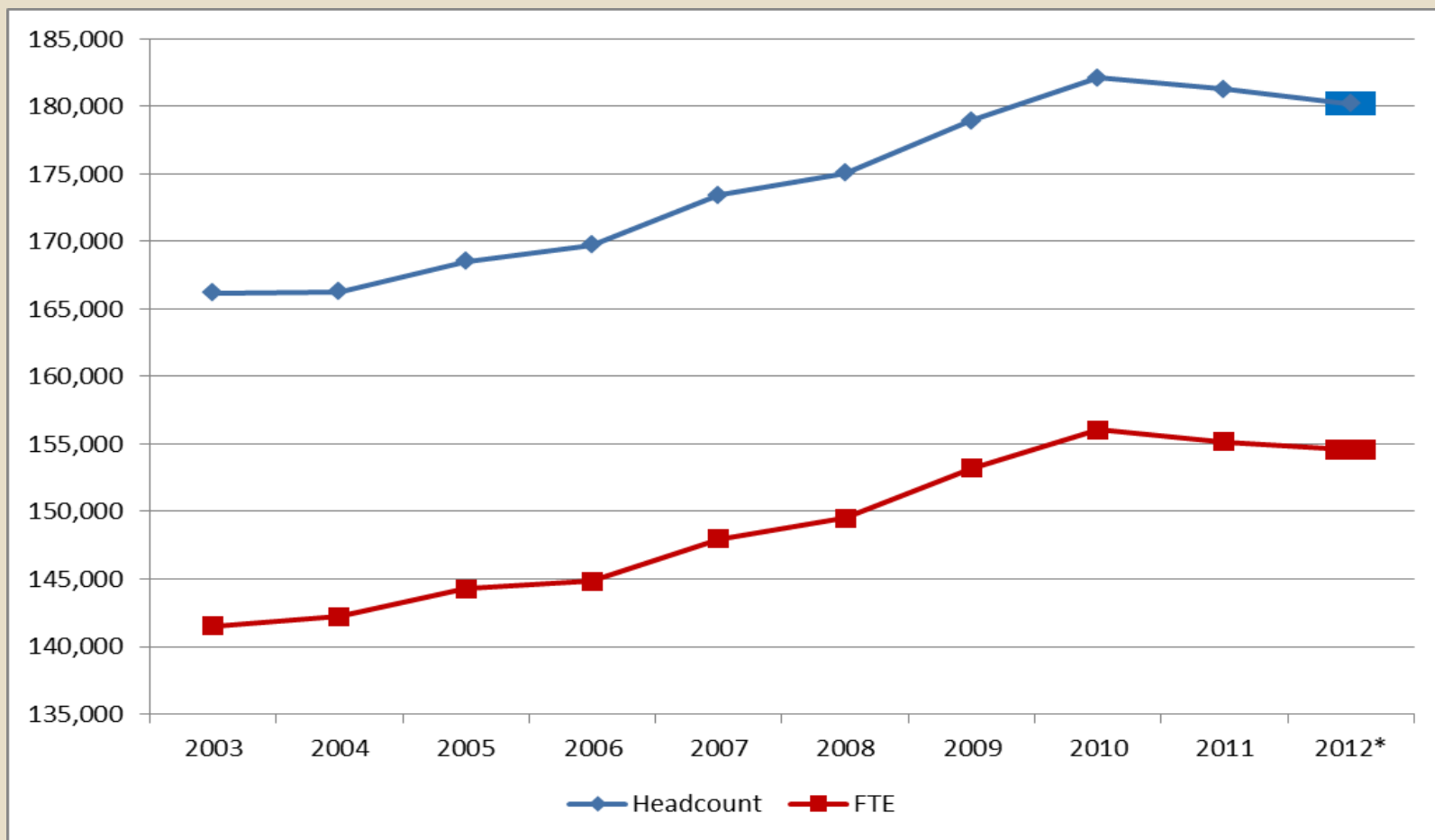
Please Keep In Mind:

3

- System level data are Based on 10th-day enrollments and are very preliminary
- System level data collected at the 10th-day is limited to total enrollment broken down by degree level, and residency status of new Freshmen
- 10th-day data provides a first look at enrollments and sets the baseline for institutions to begin developing enrollment and recruitment targets for next year

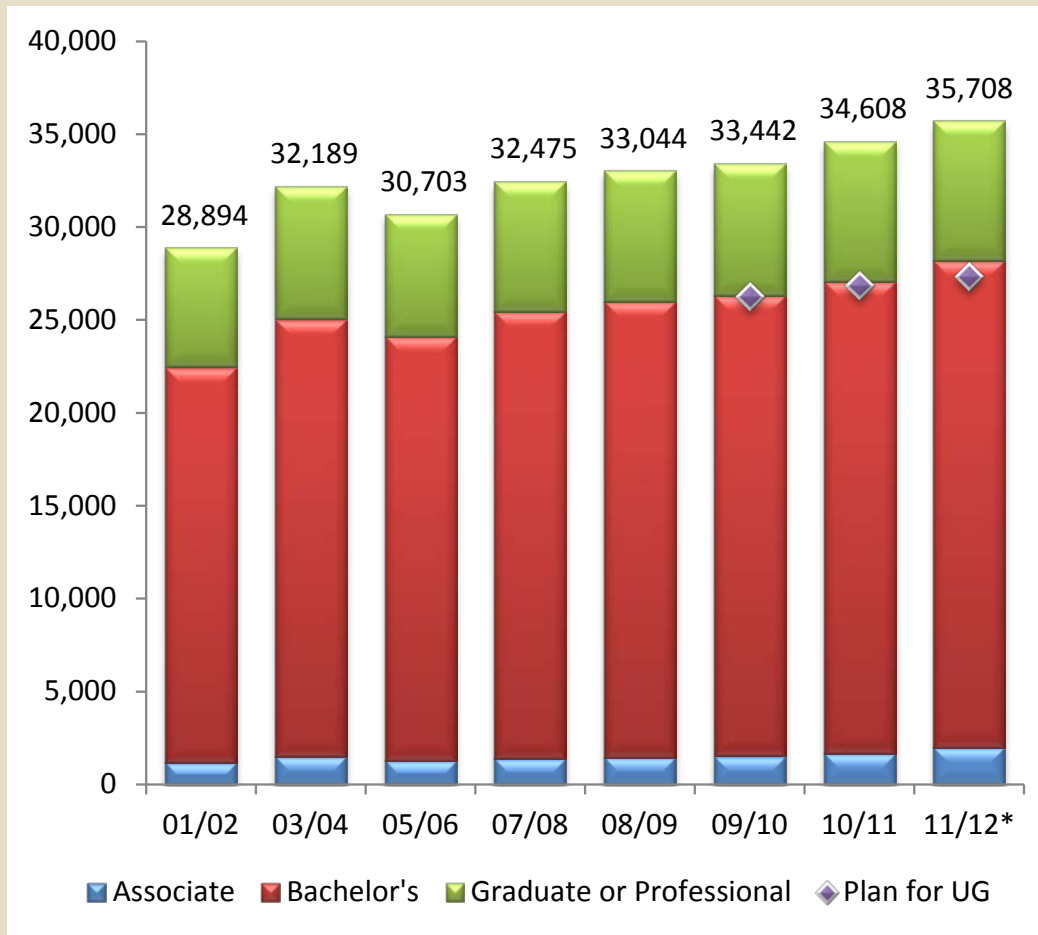
UW System Total Enrollments Fall 2003 - Fall 2012

4



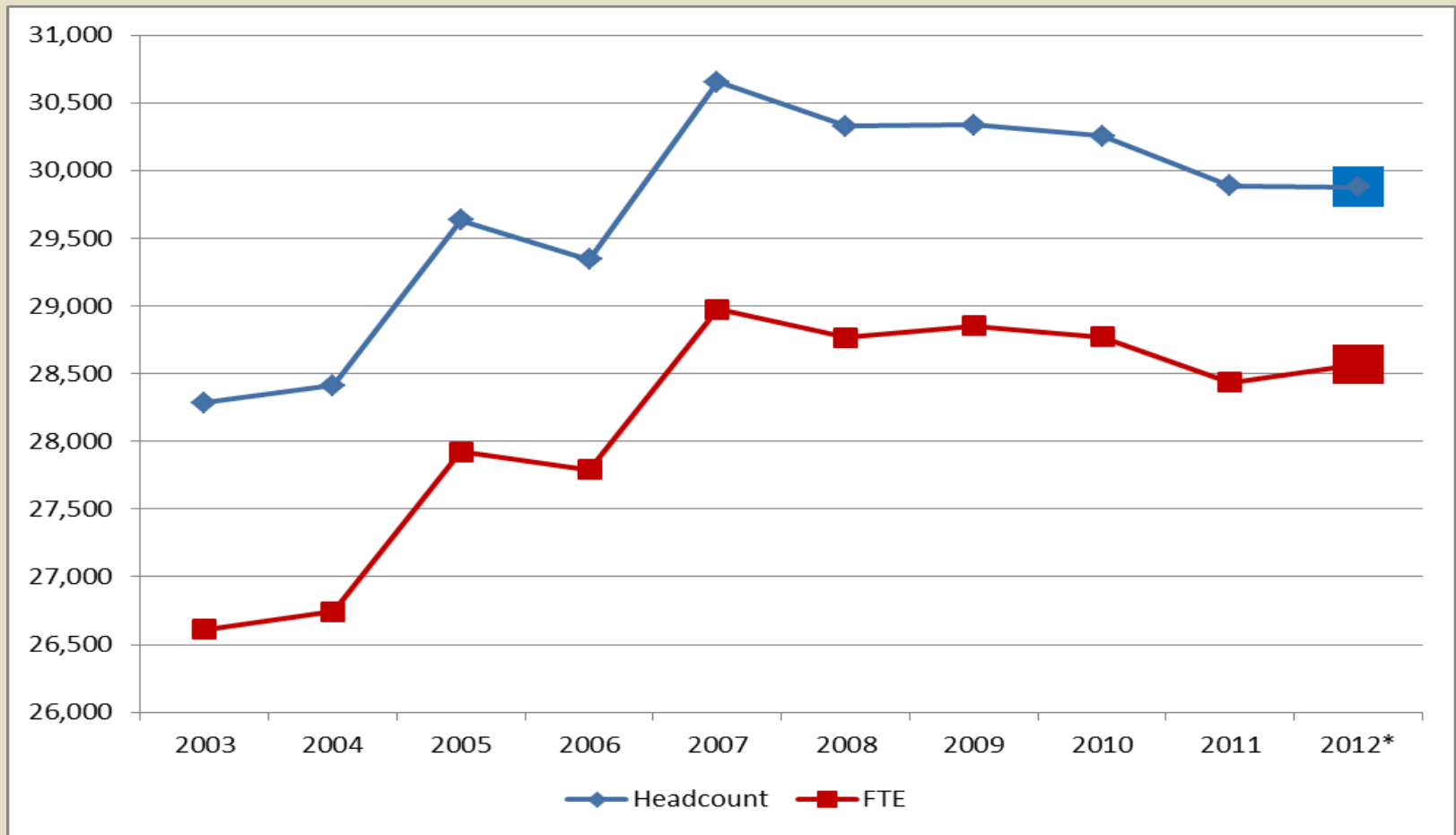
UW Degrees Conferred

5



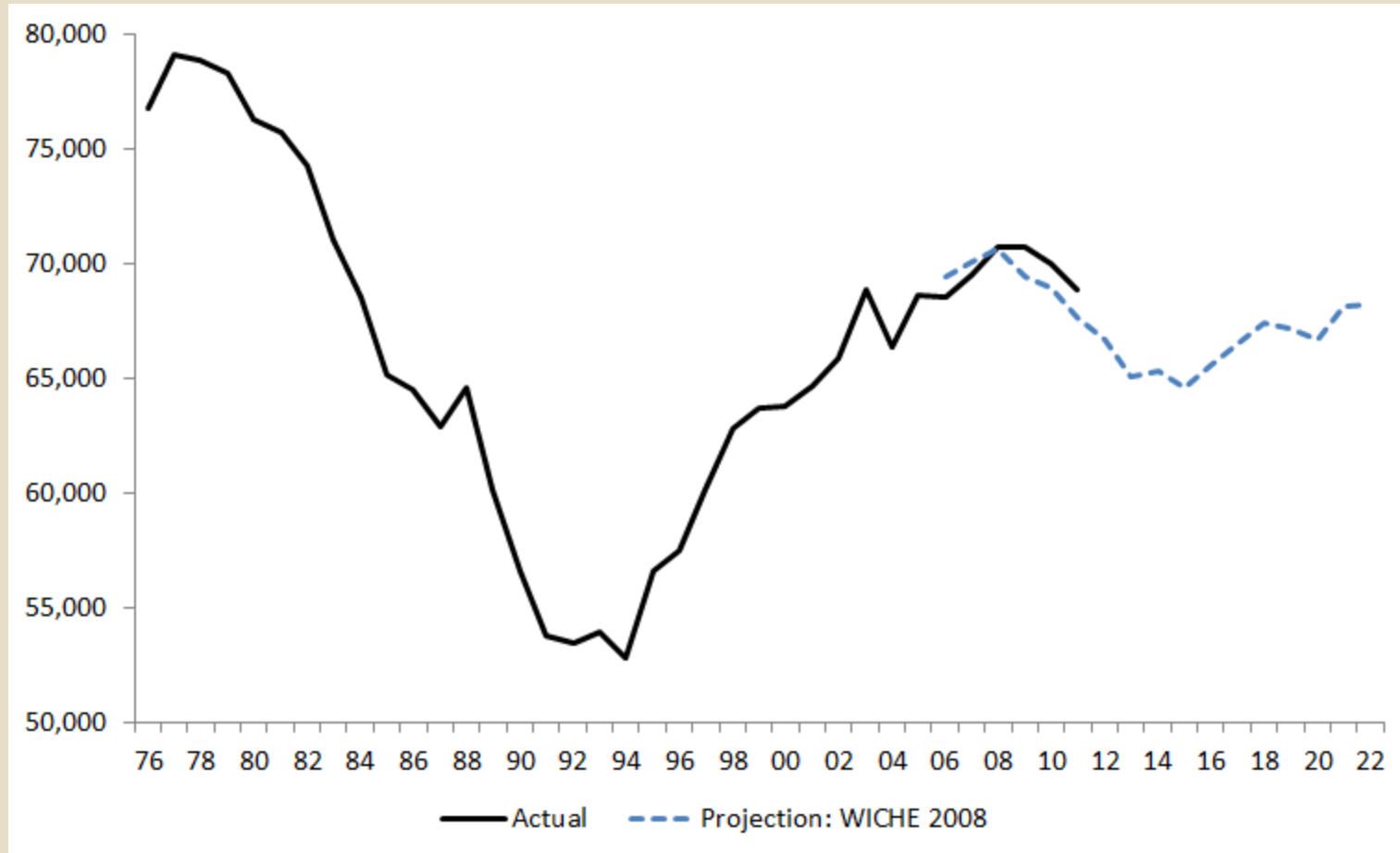
UW System New Freshman Enrollments Fall 2003 – Fall 2012

6



Wisconsin High School Graduates Projection 2022

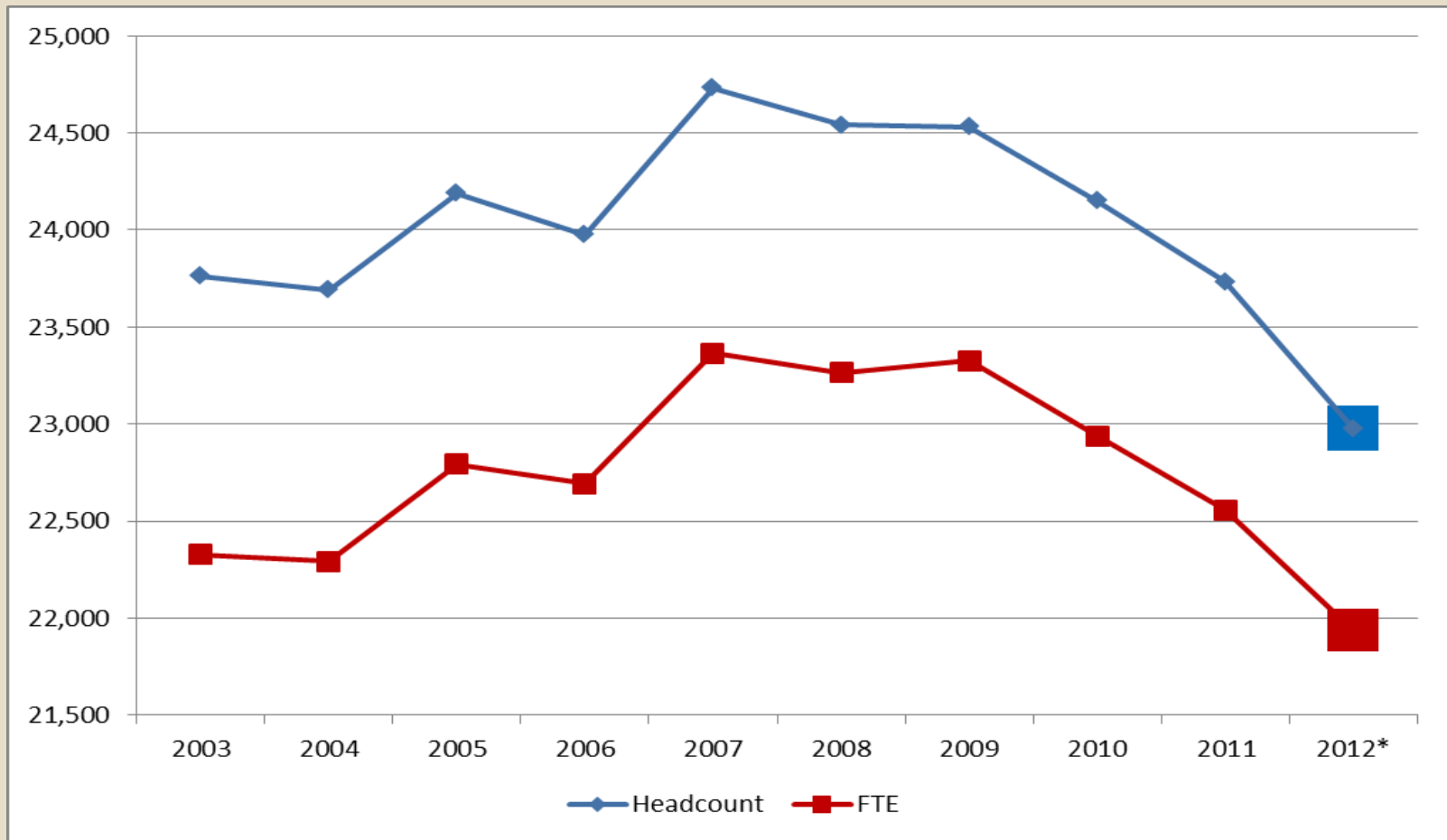
7



UW System Fall Enrollments

Resident New Freshmen, 2003-12

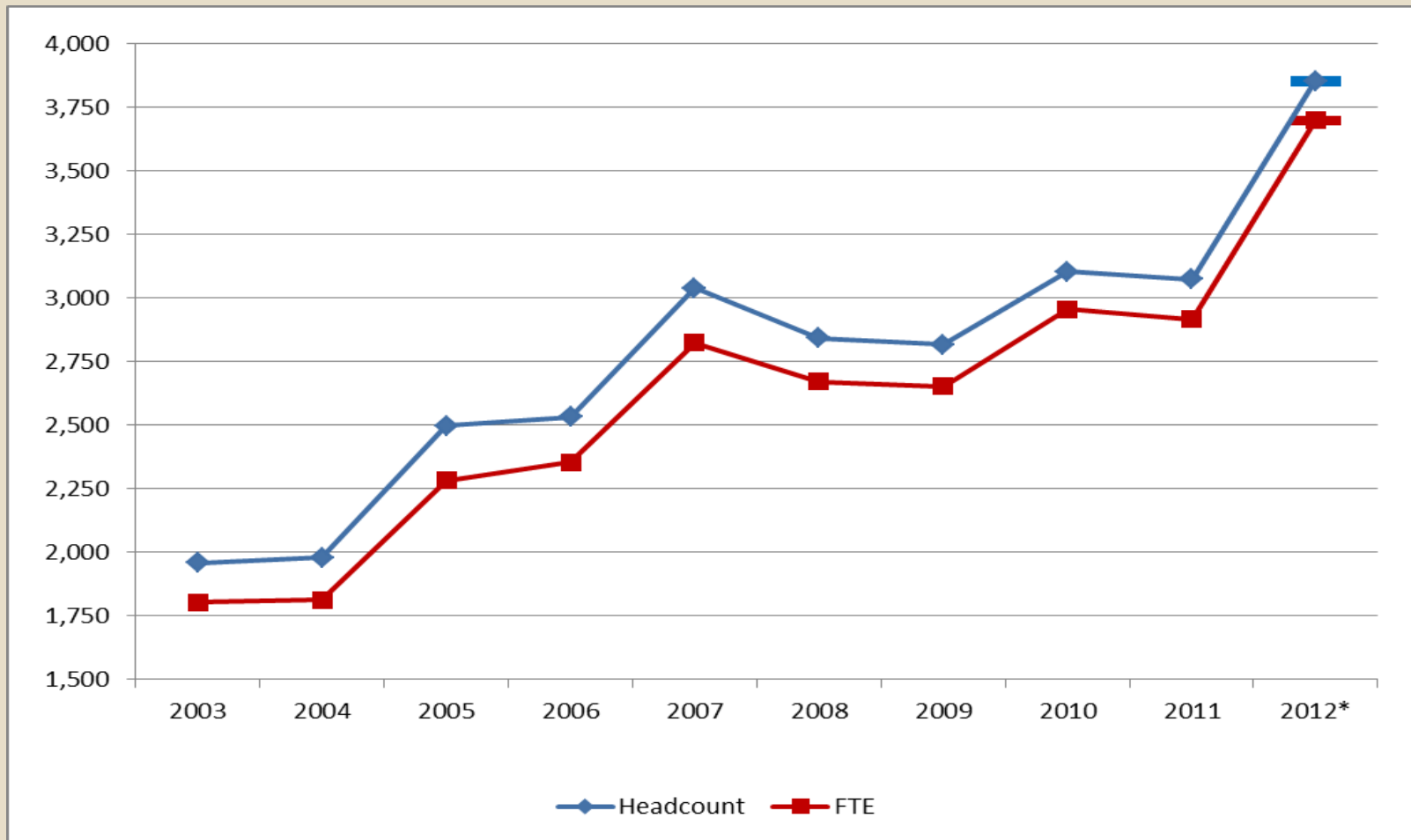
8



UW System Fall Enrollments

Non-Resident New Freshmen, 2003-12

9



Questions?

10

