

The background features a series of light gray, stylized, pointed shapes radiating from the center, creating a sunburst or star-like effect.

## **UWRF Master Plan** **Board of Regents**

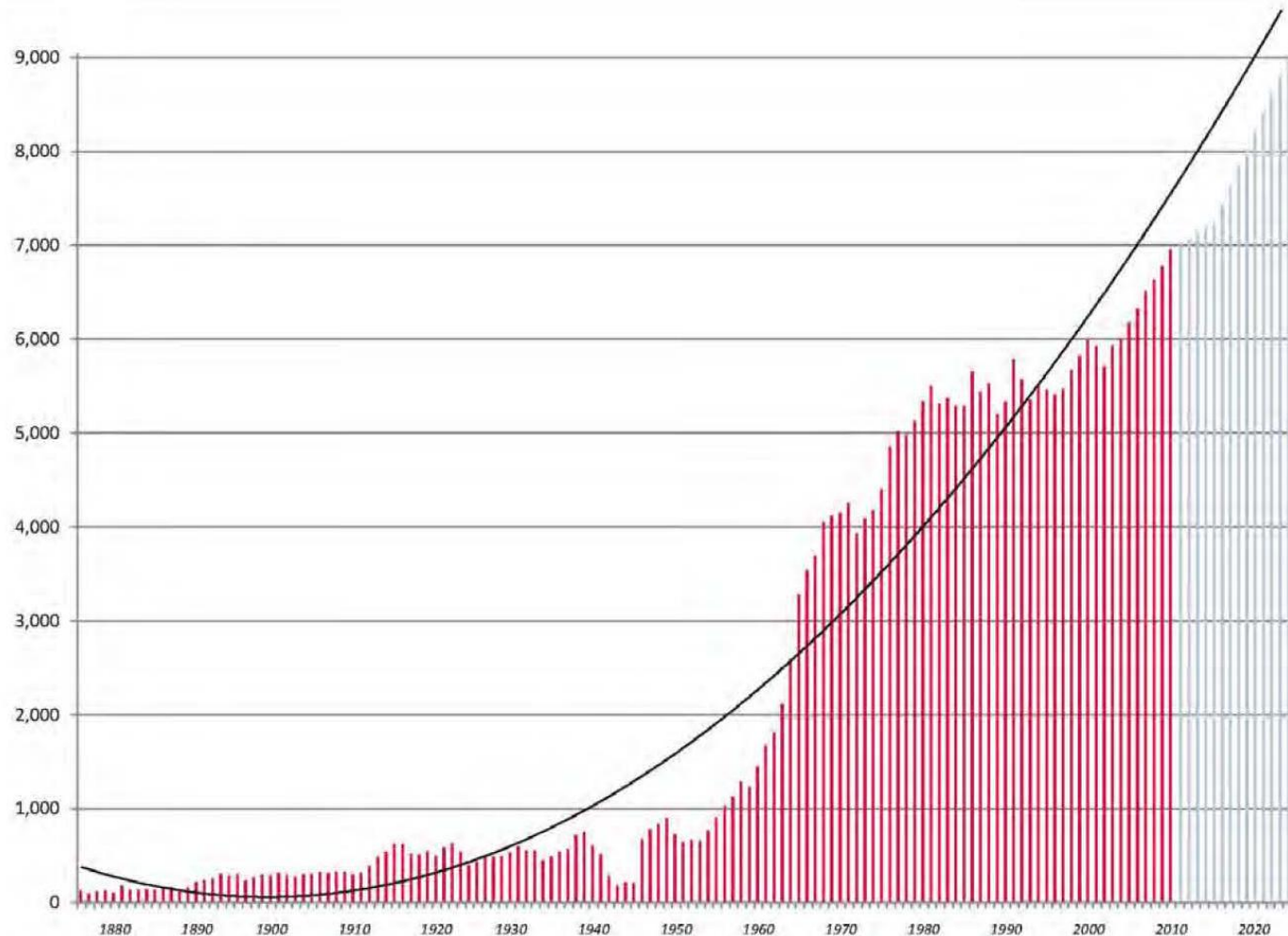
**October 6, 2011**

## Presentation highlights

- UWRF growth
- Master Plan Guiding Principles
- Campus & community Engagement
- Overview of the Master Plan outcomes
- Boundary Expansion
- Key near term projects (HHP, Rodli adaptive reuse, Cascade Ave)

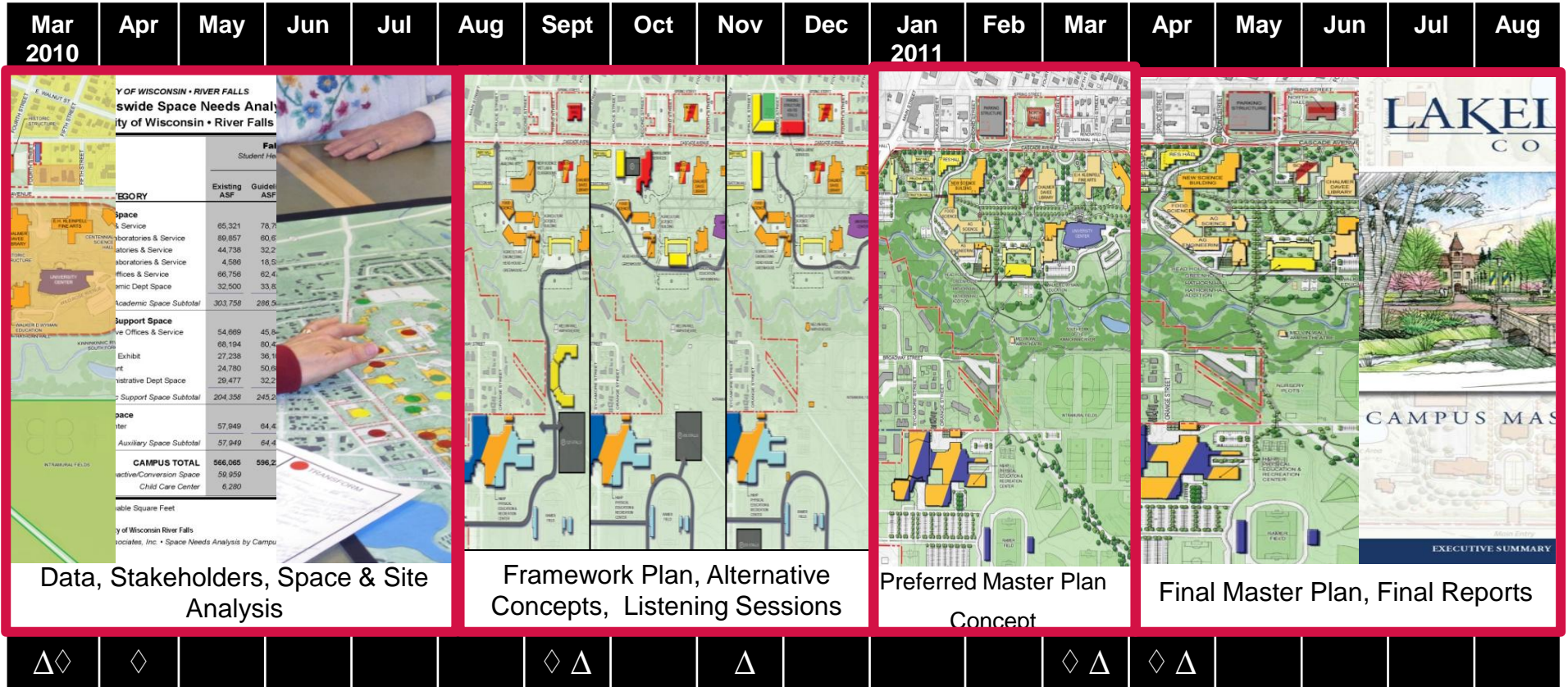
Enrollment Projections					
	Unduplicated Headcount				
	Existing	Target A	Percent Increase	Target B	Percent Increase
Student Enrollment	(Fall 2009)	2015/2016	(From existing)	2025/2026	(From existing)
<b>On-campus</b>	<b>6,443</b>	<b>6,603</b>	<b>2%</b>	<b>7,441</b>	<b>15%</b>
Off-campus	318	542		948	
On-line	N/A	101		799	
<b>Total Student Headcount</b>	<b>6,761</b>	<b>7,246</b>		<b>9,188</b>	
Faculty & Staff Projections					
	Full-time Equivalent (FTE)				
	Existing	Target A	Percent Increase	Target B	Percent Increase
Employee Type	(Fall 2009)	2015/2016	(From existing)	2025/2026	(From existing)
Faculty   On-campus (1:26)	276	303		371	
Increase Ratio   On-campus		01:26.0		01:27.7	
Faculty   On-line (1:24)	N/A	4		30	
Increase Ratio   On-line		01:24.0		01:26.9	
<b>Faculty   Total</b>	<b>276</b>	<b>307</b>	<b>11%</b>	<b>401</b>	<b>45%</b>
Increase Ratio		0.62		0.68	
<b>Staff   Total</b>	<b>399</b>	<b>418</b>	<b>5%</b>	<b>482</b>	<b>21%</b>
<b>Total Faculty &amp; Staff FTE:</b>	<b>675</b>	<b>725</b>		<b>882</b>	

*Student Enrollment Growth Since UWRF's Founding*



## **Campus Master Plan Guiding Principles**

- Integrate with the Host Community
- Create a Clear Identity
- Put Pedestrians First
- Recognize Bicycles and Automobiles
- Seek Diversity and Inclusiveness
- Maintain Campus Safety



◇ Chancellor's Cabinet Meeting

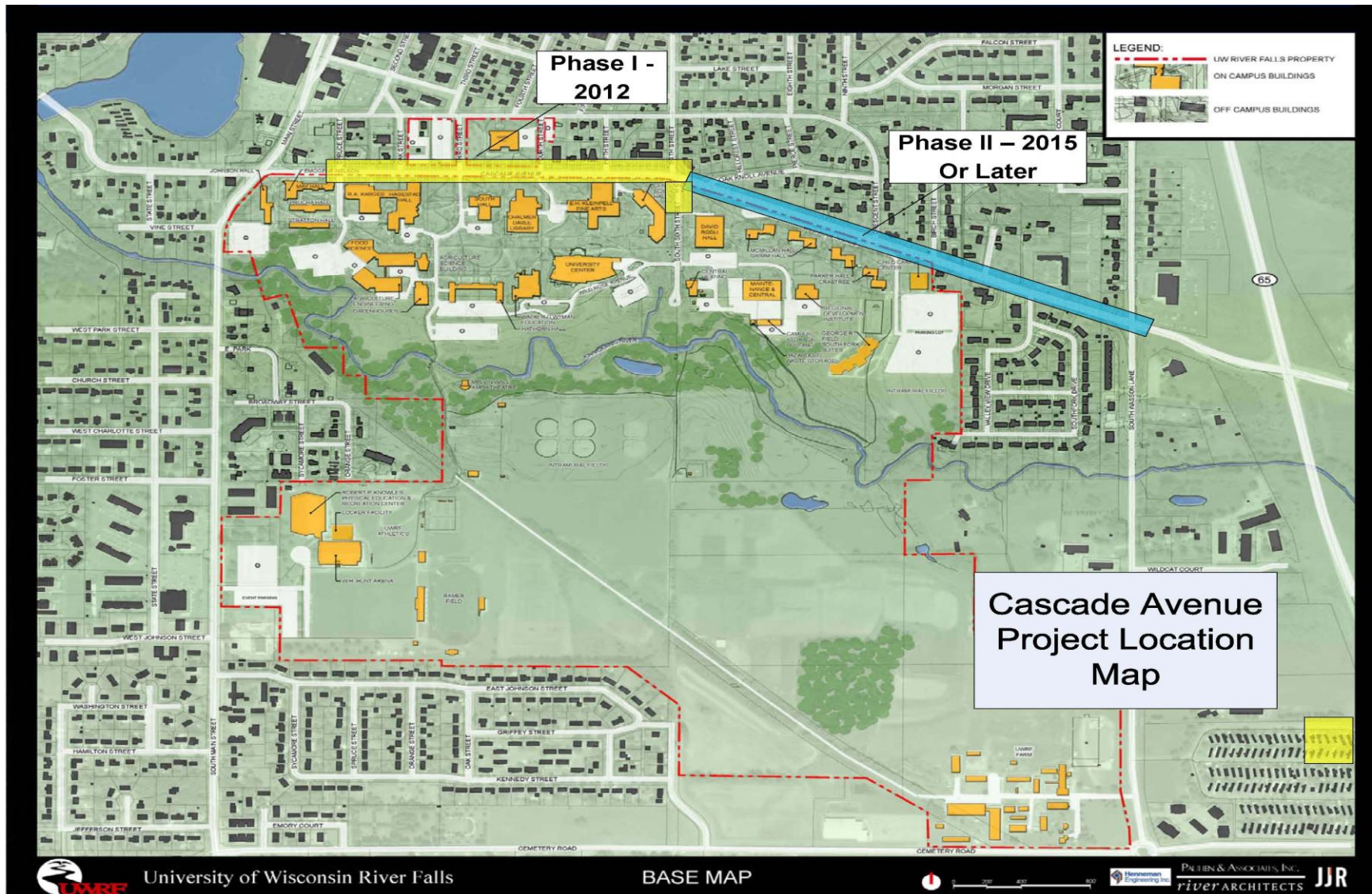
△ Campus Open House

# **Overview of the Master Plan Outcomes**





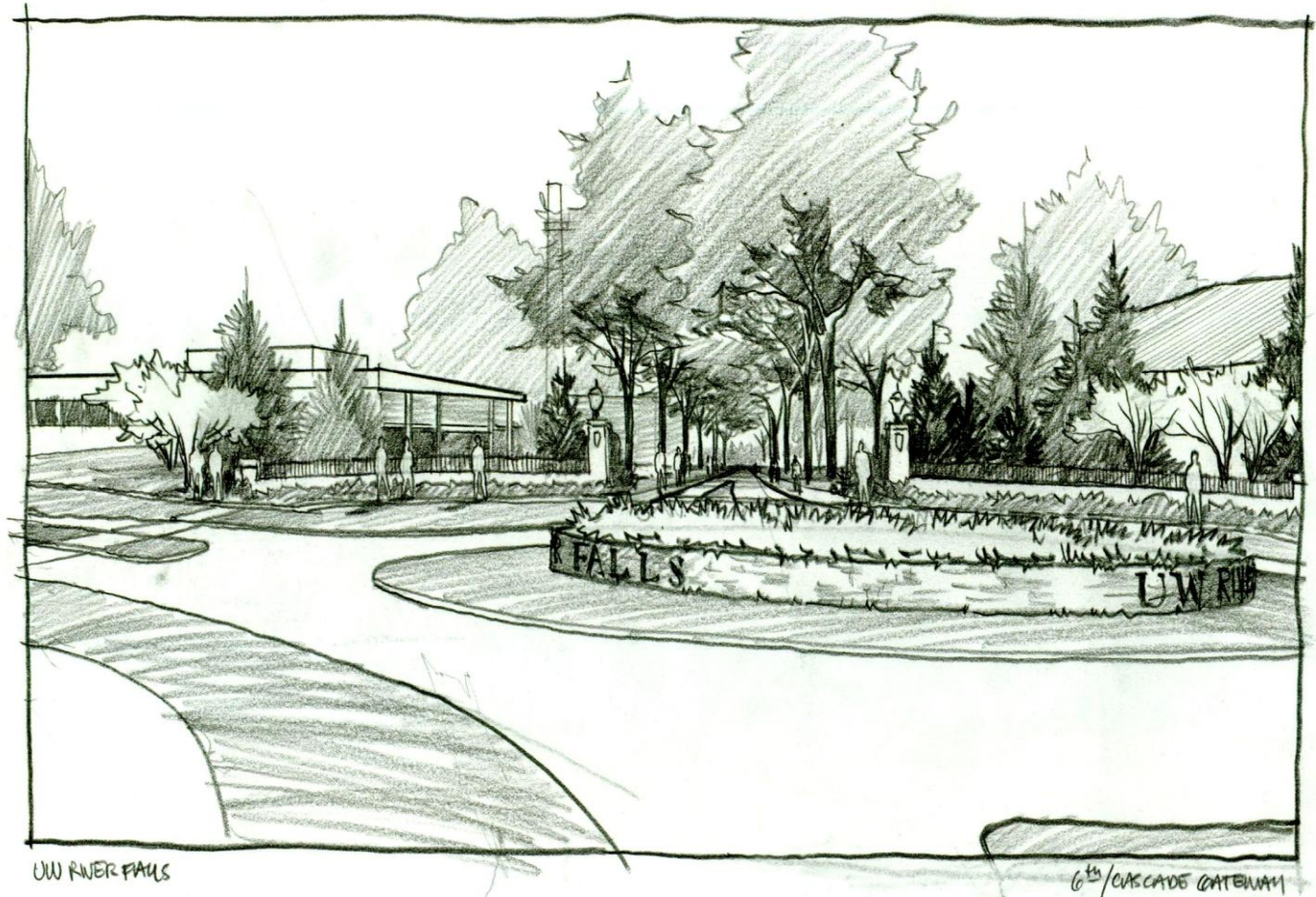






## Major Gateway

- Sixth Street Roundabout
- Student Services (Rodli Hall)
- University Center



## Major Gateway

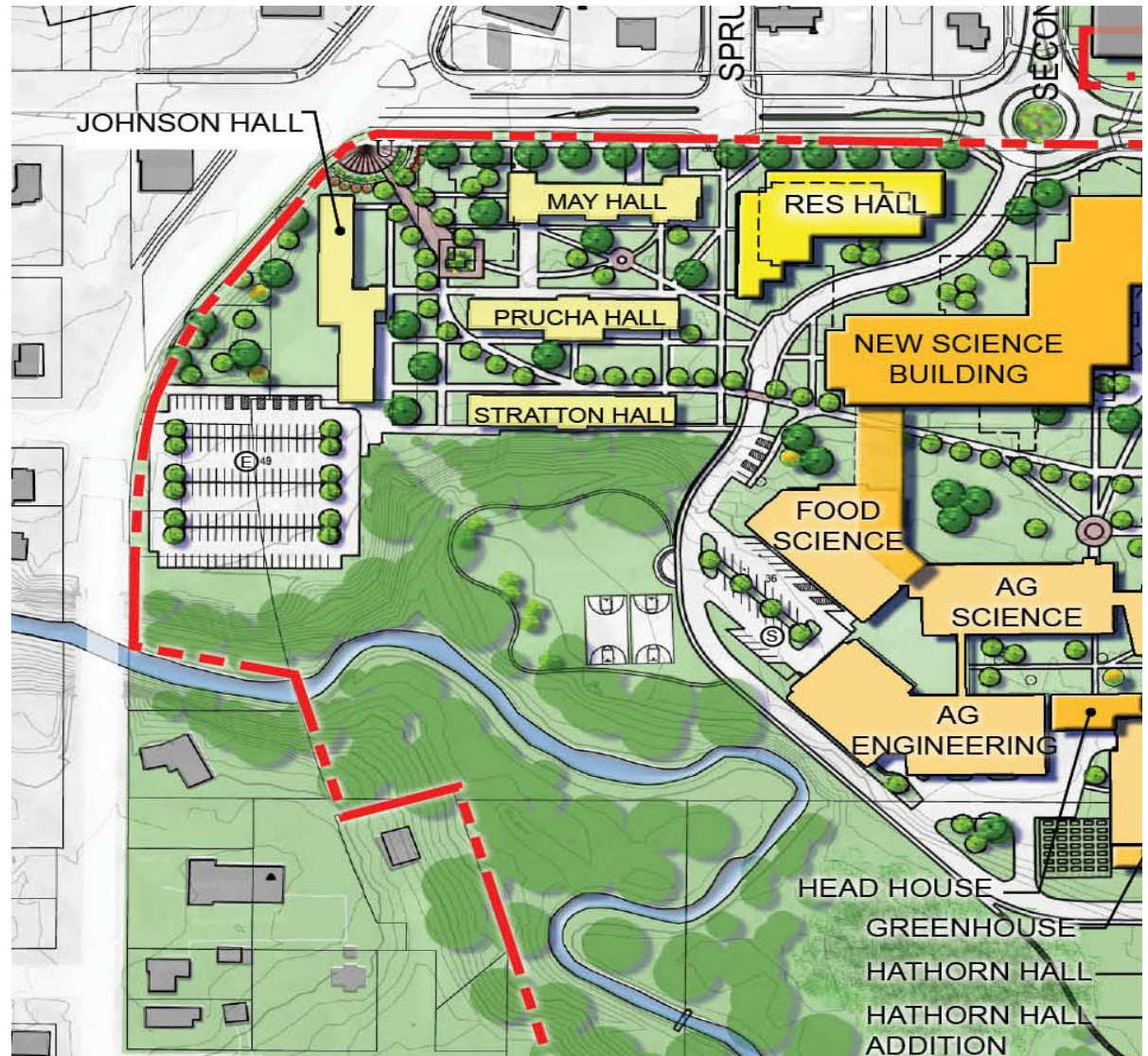
- Cascade Avenue  
at Second Street  
Roundabout





## West Neighborhood

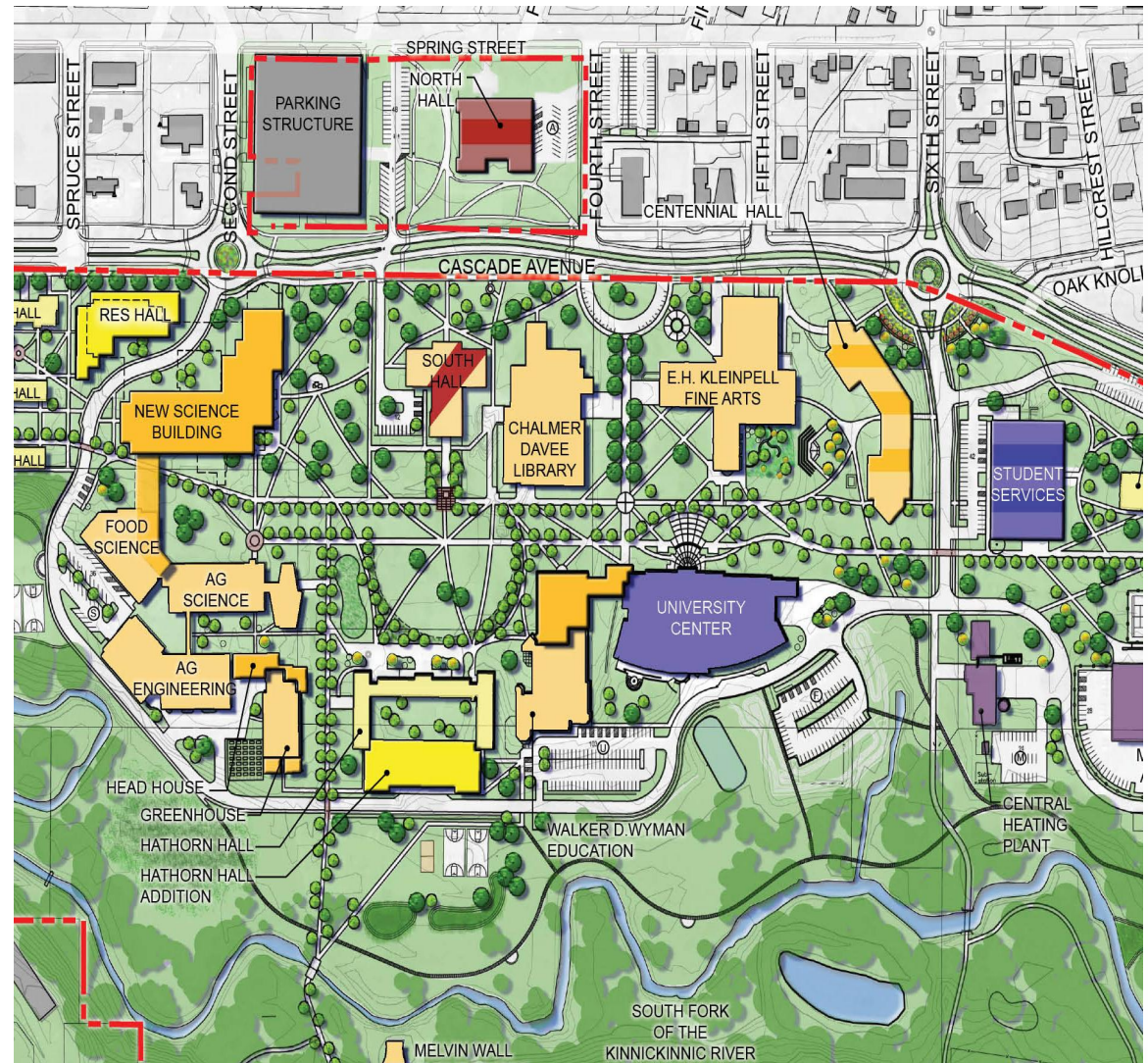
- Add a Residence Hall





## Academic Core

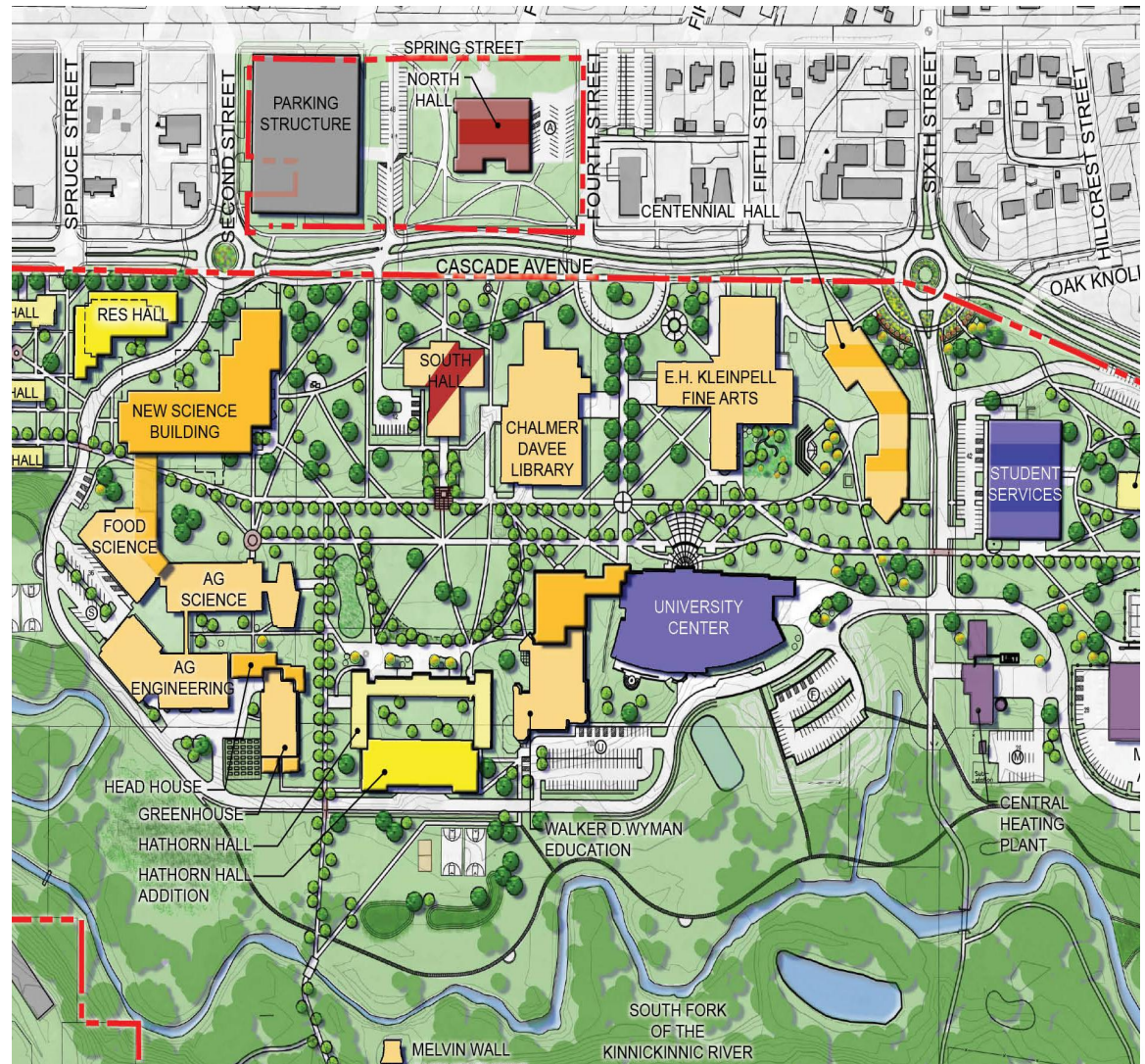
- New Science Building on Karges/ Hagestad site
- Additions to Greenhouse for academic instruction
- Hathorn Hall Addition





## Academic Core

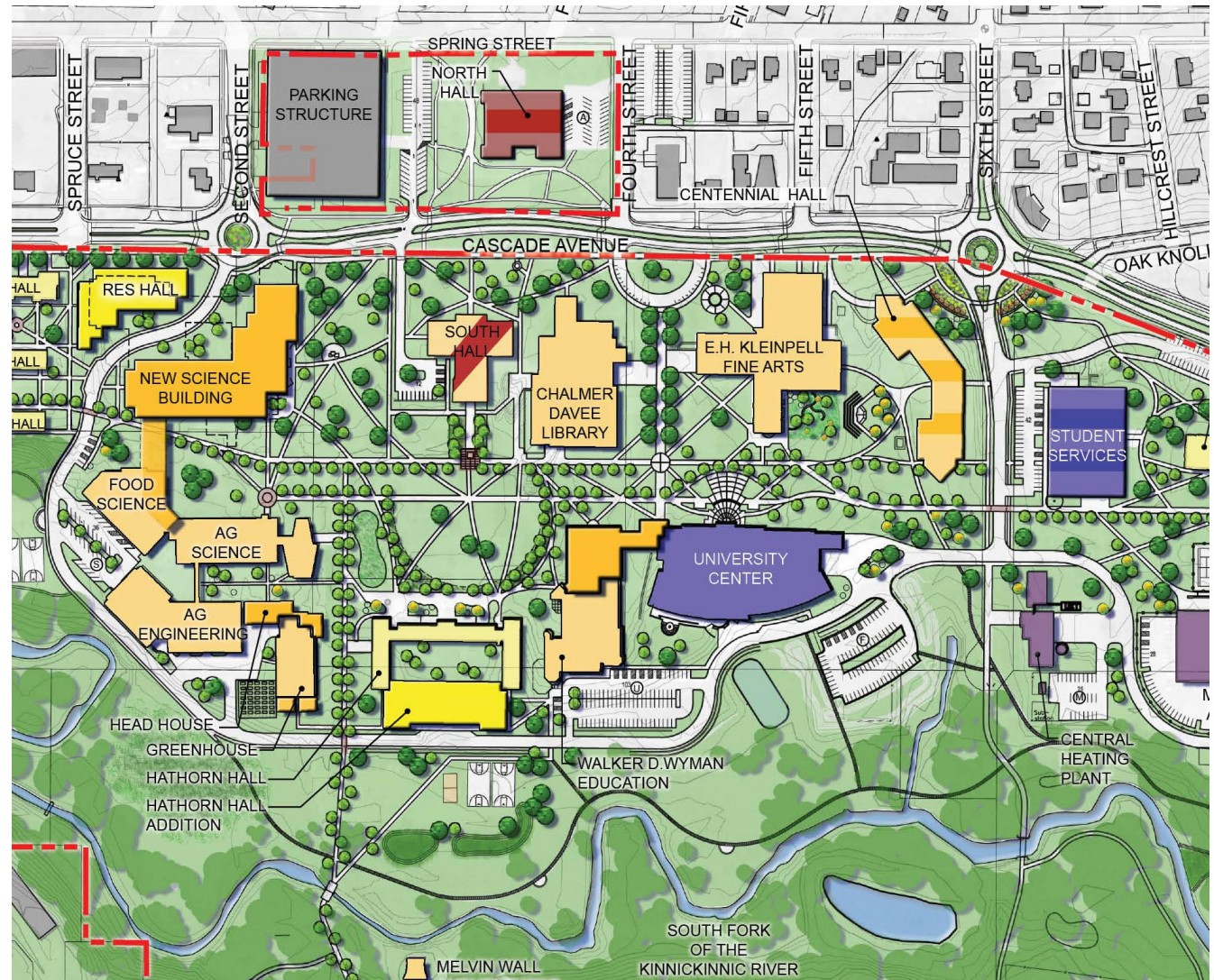
- Centennial Hall Renovation
- North Hall Renovation
- Wyman Addition





## Academic Core

- Renovate Rodli Hall for Student Services
  - Enrollment Services (Registrar, Accounts Receivable, Financial Assistance, Admissions)
  - Career and Health
  - Counseling Center
  - Academic Success Center
  - International Programs
  - Common Welcome Center





## East Neighborhood

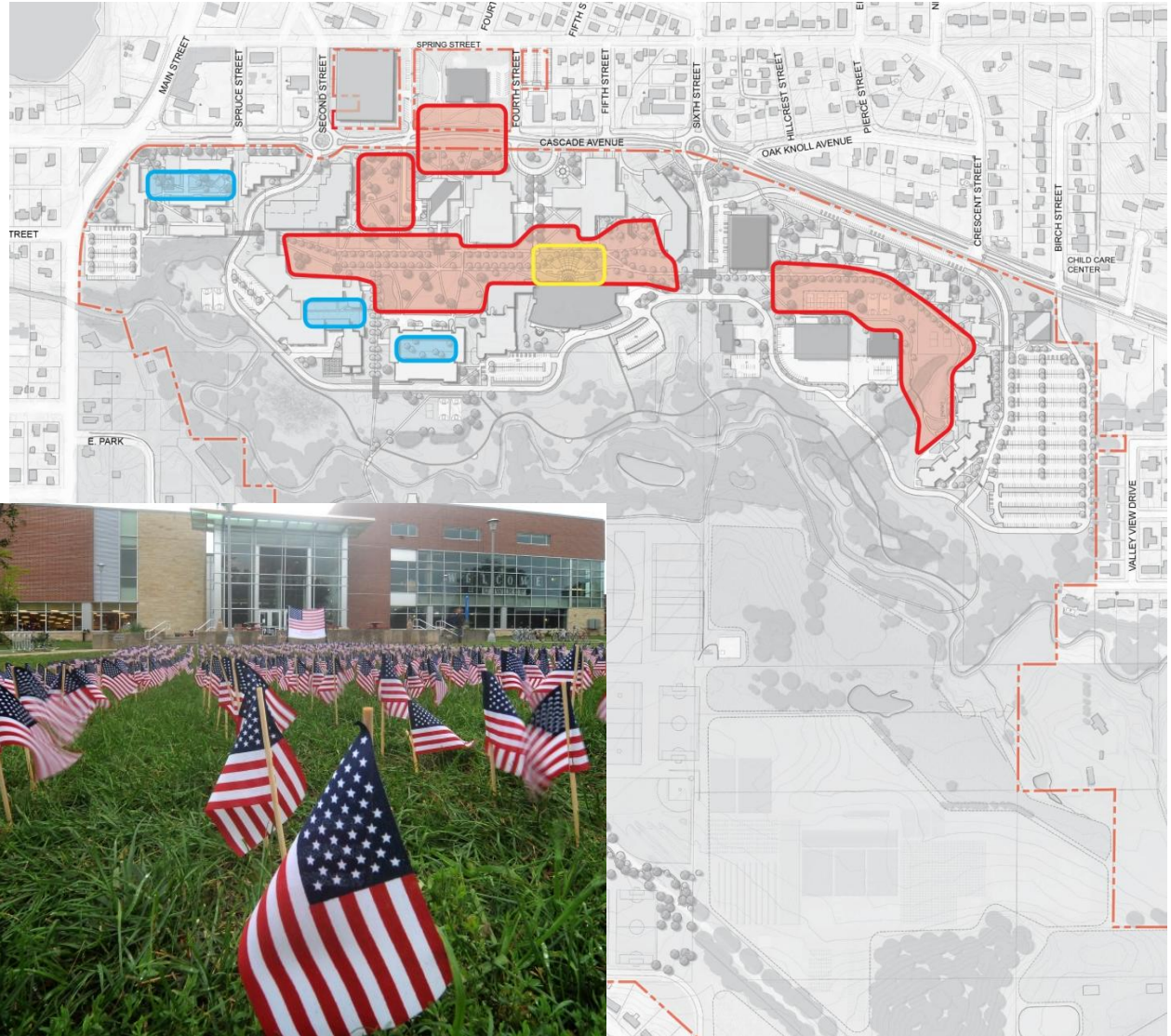
- South Fork Suites Addition
- RDI Building converted to offices





## Open Space

- Union Plaza
- Quadrangles
  - Campus Mall
  - East Neighborhood
  - Hagestad/South Hall Grove
  - North Hall/South Hall
- Courtyards









## Key projects

- Short Term
  - Cascade Avenue
  - Health and Human Performance
  - Rodli Hall Stewardship
- Mid-Term
  - New Science Building
  - North Hall Stewardship
  - Hathorn Hall Addition
- Long Term
  - Ag. Science Complex Stewardship

# Questions and Discussion