



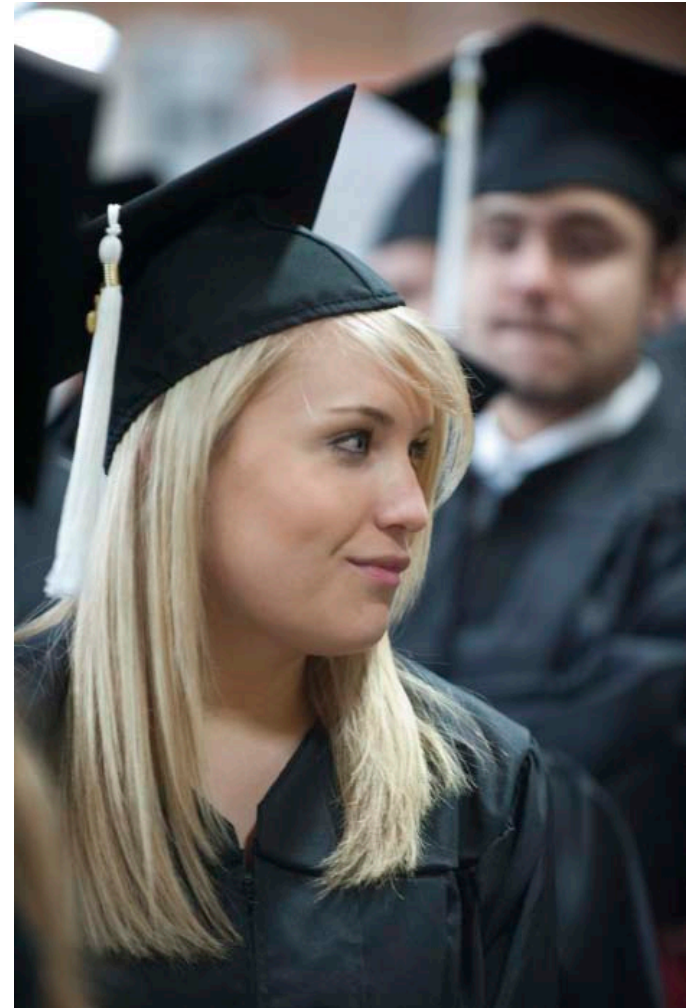
The Falcon Promise – Undergraduate Differential Tuition

- Fall 2010 Enrollment of 6,900
- Over half of first-time freshmen are first-generation students
- Second lowest average household income in UWS among Wisconsin students



## Focus:

- Enhanced Library Services
- Testing and Tutoring Center
- Undergraduate Research, Scholarly, and Creative Activity



## Enhanced Library Services:

- Expanded library hours
- 24 hour computer lab
- Document delivery services
- Online journal and database services



## Tutoring



	Fall 2008	Spring 2009	Fall 2009
Chemistry Help Room	310	297	378
ESL Help Room	475	450	231
Physics Help Room	550	301	481
SKILL Center	-	-	503
Writing Center	807	620	608
Study Groups	309	274	310
<b>Total # of student visits</b>	<b>2,451</b>	<b>1,942</b>	<b>2,511</b>



## Undergraduate Research, Scholarly, and Creative Activity



- Falcon Grants are peer-reviewed research funding proposals
- 350 students received Falcon Grants from 2007-2010



## National Conference on Undergraduate Research

2010: 62 student presentations  
(3<sup>rd</sup> largest in nation!)

2011: 95 students have abstracts  
accepted



A partnership with students to expand current differential tuition, with a focus on four initiatives.





Overarching goal is to increase student retention and success

Maintain existing funding and add new elements:

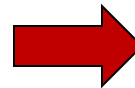
- Expanded Tutoring (10%)
- Undergraduate Research Opportunities (30%)
- Enhanced Learning Spaces (30%)
- Falcon Scholars Challenge (30%)

Academic Year	Total Differential Tuition	Estimated Budget
2010-2011	\$72 (current)	\$388,705
2011-2012	\$100	\$553,962
2012-2013	\$130	\$731,022
2013-2016	\$160	\$908,082



## Investment

- Peer Tutoring  
(approximately 25 student tutors)
- Academic Support Workshops



## Impact

- Decreased D, F and W grades in key gateway courses by 33% in the next three years
- Support increased student retention



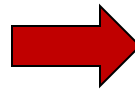
**Student research  
on seven continents.**



**UNIVERSITY OF WISCONSIN** **River Falls**  
[www.uwrf.edu](http://www.uwrf.edu)

## Investment

- Student Research Stipends
- Student Project Support
- Faculty Mentor Support



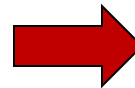
## Impact

- Additional 80 students and 25 faculty per year supported in research
- Increased faculty/student and peer interaction
- Increased student retention and interest in graduate school



## Investment

- Academic learning space technology, furniture, “non-fixed” items (priority placed on support for undergraduate research)



## Impact

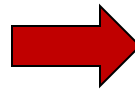
- Approximately eight renovated classrooms or research spaces
- Enhanced learning environment for faculty and students





## Investment

- Alumni/Friends: scholarship support
- Student Funds: study abroad or undergraduate research stipends



## Impact

- Approximately 390 Falcon Scholar awardees over the first five years
- Increased need-based scholarship and study abroad/research support
- Increased charitable giving
- Increased retention and graduation rates

**The Falcon Promise was developed through a six-month process that actively engaged students in shaping the proposal:**

**August, 2010** – Initial discussions between the Chancellor and Student Senate President

**September – December, 2010** – Proposal is shaped during meetings between Chancellor and Provost, and Student Senate Leadership

**November, 2010** – Student Senate hosts a widely publicized polling event and makes significant changes to the proposal based on student feedback

**December, 2010** – *The Student Voice* ran a feature story on The Falcon Promise encouraging students to provide input to the Chancellor and Student Senate President; Student Senate conducts a campus-wide open forum; *The Student Voice* endorses The Falcon Promise in an editorial

**January, 2011** – The Student Senate approved the proposal by a vote of 18-1

**Significant changes made to the proposal as a result of student input include:**

- Increase the relative funding for undergraduate research (9.5 percent to 30 percent)
- Decrease in funding for enhanced learning spaces (51 percent to 30 percent)
- Prioritization of enhanced learning spaces that support undergraduate research
- Addition of an interview requirement in selection of Falcon Scholars





The Falcon Promise – Undergraduate Differential Tuition