

The UW-Milwaukee Initiative



Board of Regents – Jan. 8, 2010
UWM Chancellor Carlos E. Santiago



Initial direction from Board of Regents

Focus on strengthening:

- Academics
- Scholarship
- Research
- Fund-raising
- Regional economic development
- Community partnerships



Chancellor's initial estimate
of UWM capital needs

\$300 million

General Fund Supported
Borrowing authority approved

\$124.4 million

UWM gifts/grants

\$60.0 million

UWM Program Revenue
Supported Borrowing

\$55.6 million

Total borrowing authority

\$240 million



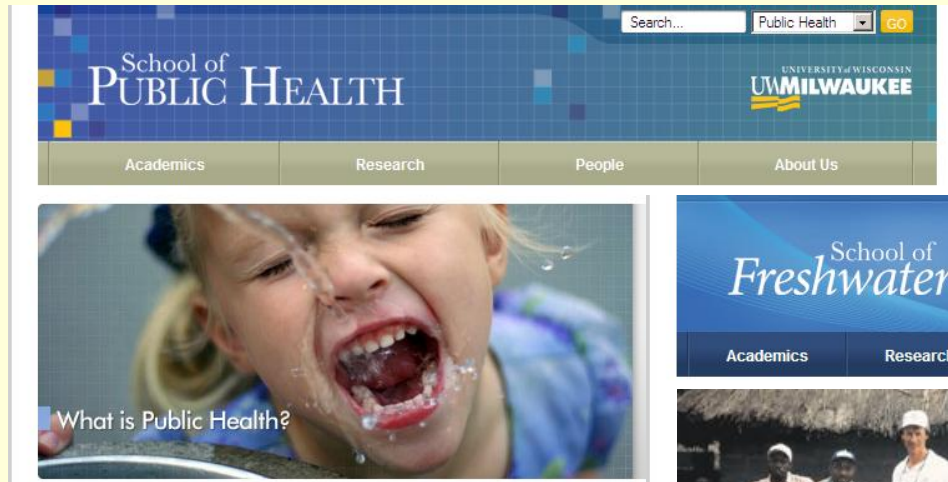
Strong Regent support for UWM:

9 new doctoral programs since 2004

- Medical Informatics (approved 2004)
- Social Work (2006)
- Information Studies (2006)
- Physical Therapy (DPT) (2007)
- Educational Psychology (2007)
- Communication (2007)
- Environmental and Occupational Health (2008)
- Africology (2008)
- Nursing Practice (DNP) (2009)



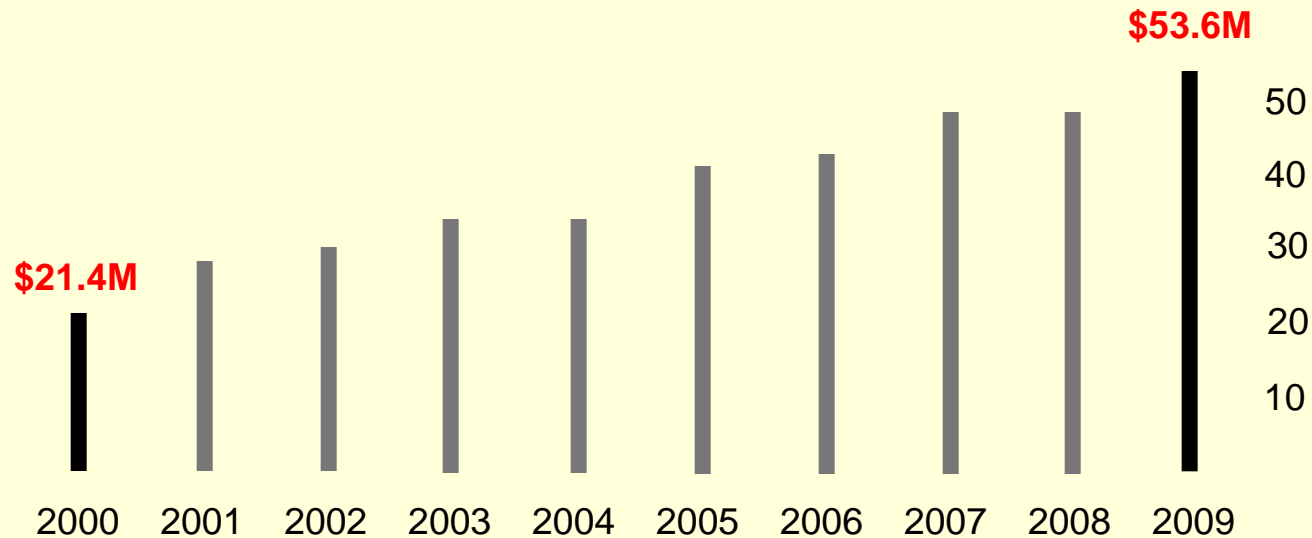
Strong Regent support for UWM: 2 new academic schools





What UWM has accomplished:

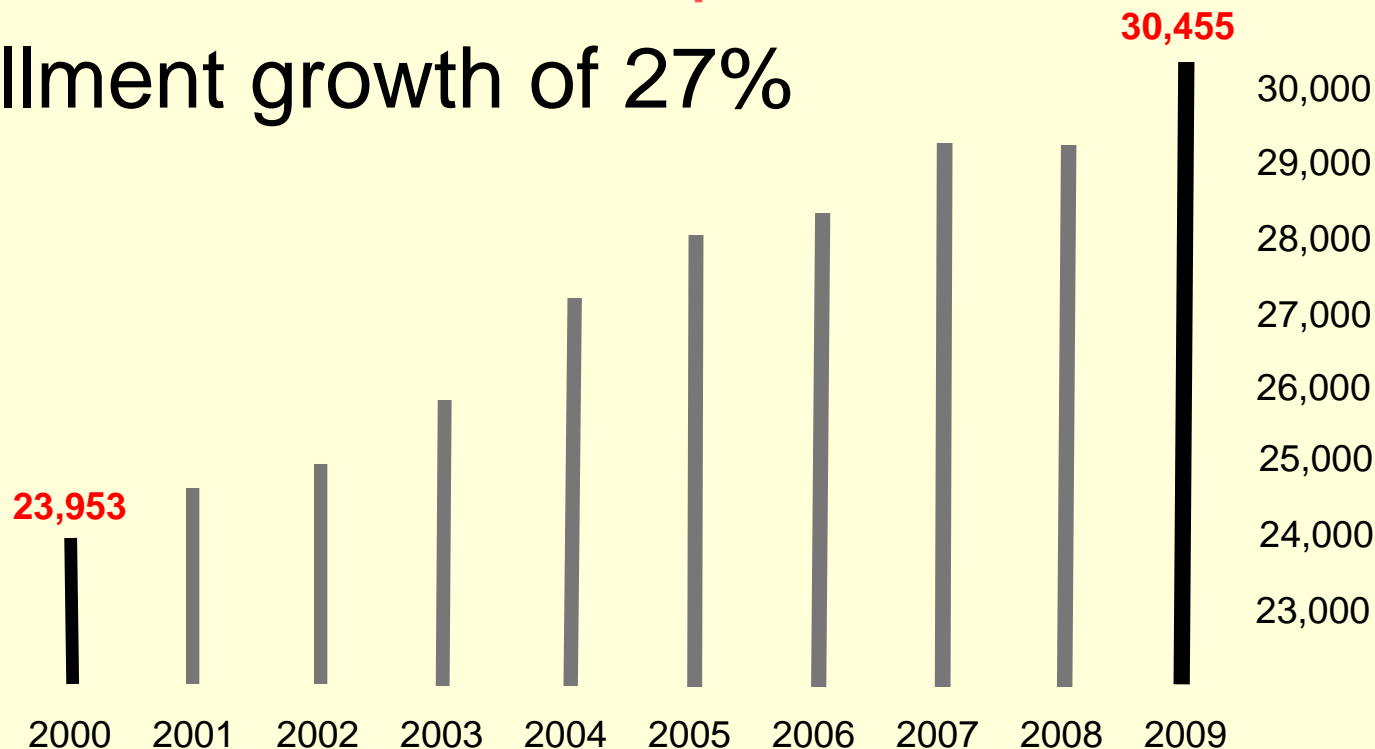
Research expenditures growth of 150%





What UWM has accomplished:

Enrollment growth of 27%





What UWM has accomplished: University-managed housing expansion



RiverView,
488 beds,
opened 2008

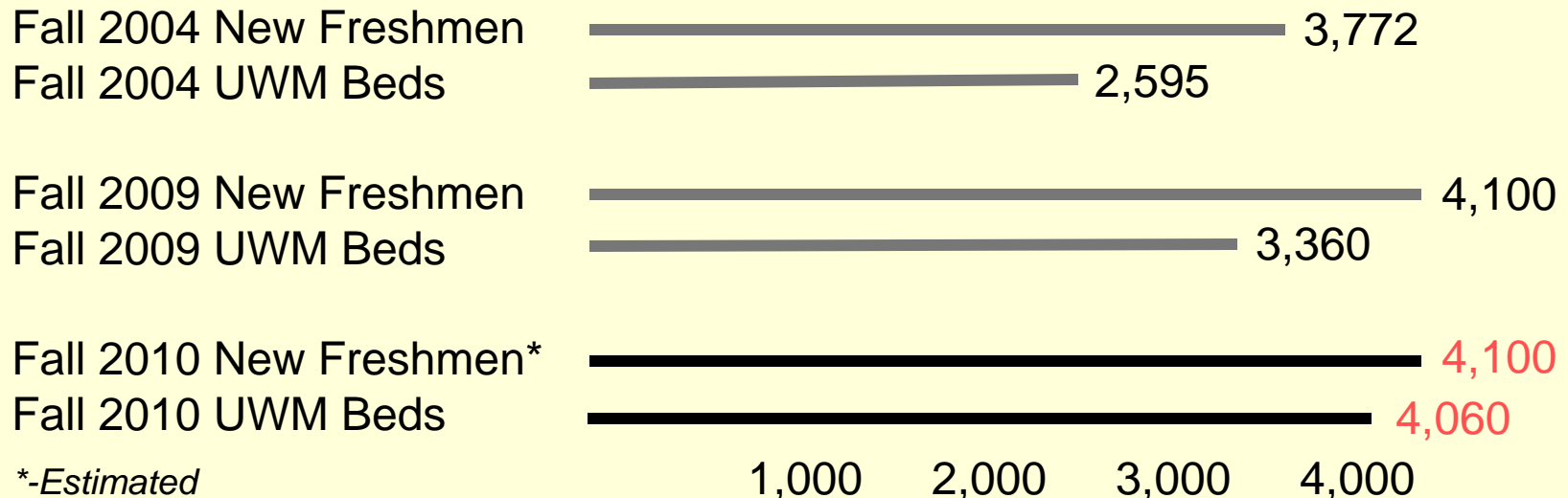


Cambridge Commons,
700 beds,
opens 2010



What UWM has accomplished:

University housing expansion done with \$80 million in private investments coordinated by UWM Real Estate Foundation.





What UWM has accomplished: Fund-raising growth

Key to the Future

Campaign
(1981-84) — \$5.9 million

Second Century

Campaign
(1986-89) — \$11.0 million

Campaign
for UWM
(2006-08)

— \$125.1 million



Base budget funding increase
through UWS Growth Agenda:

Requested	\$30 million
-----------	--------------

Received	\$10 million
----------	--------------



Even with all UWM has accomplished
on Milwaukee's East Side...





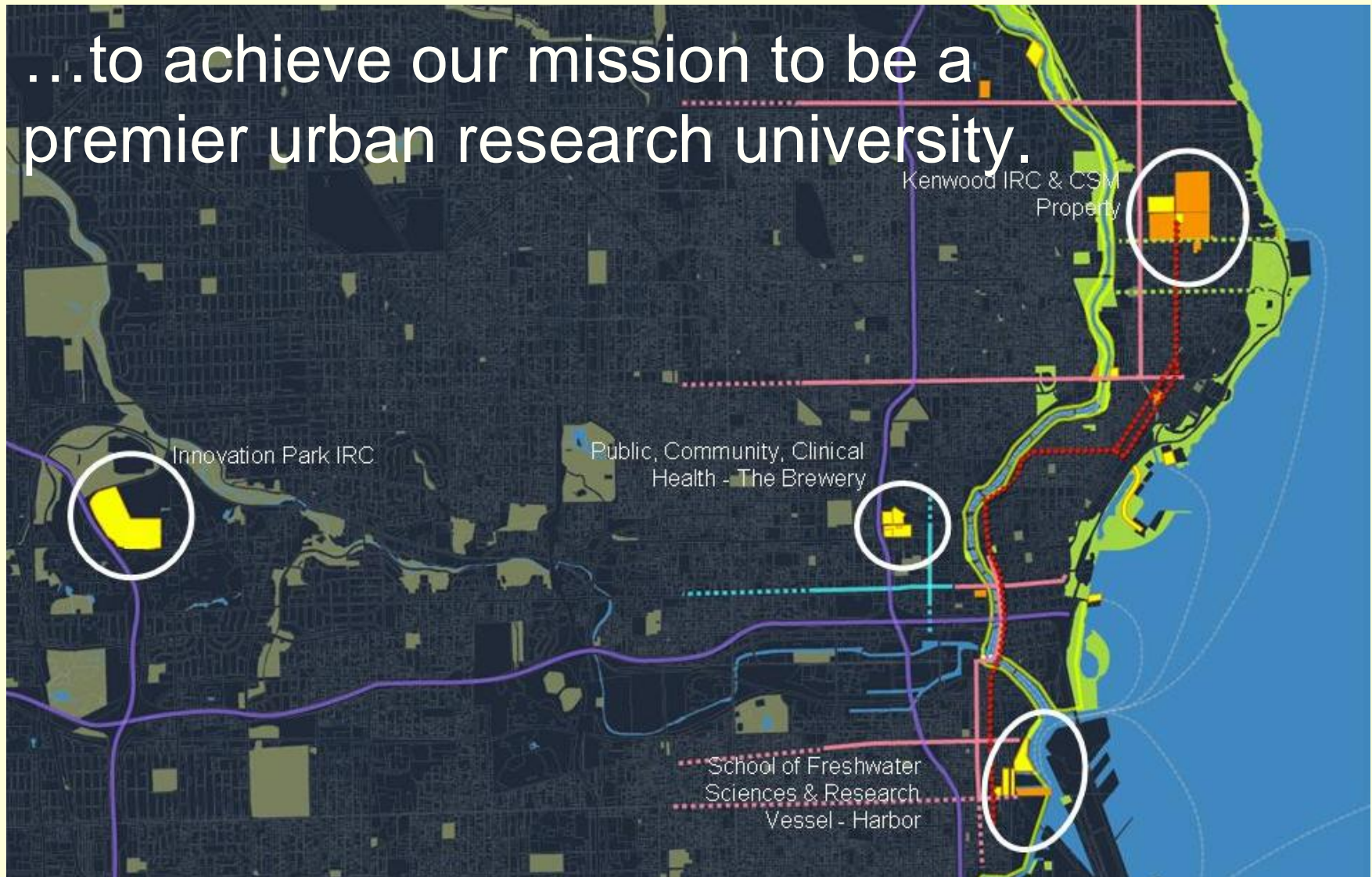
The UW-Milwaukee Initiative

The Future

...we must now expand beyond those traditional boundaries...

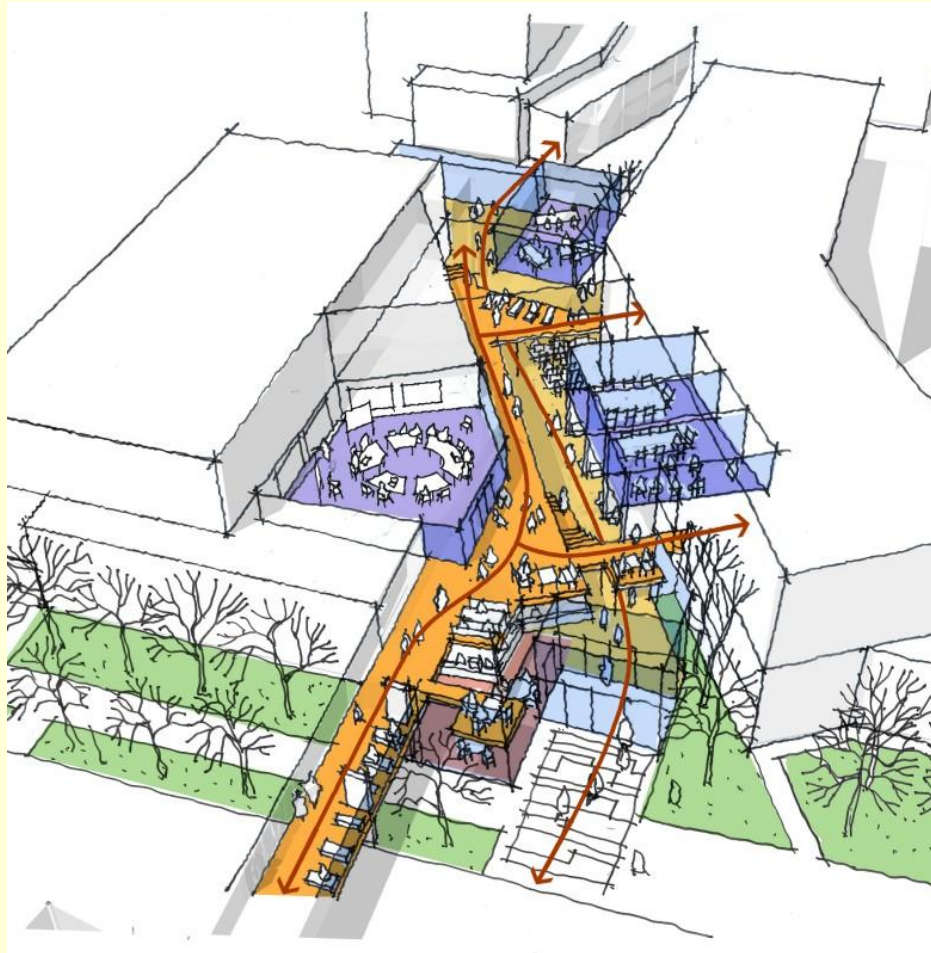


...to achieve our mission to be a
premier urban research university.





Kenwood Integrated Research Complex Phase I



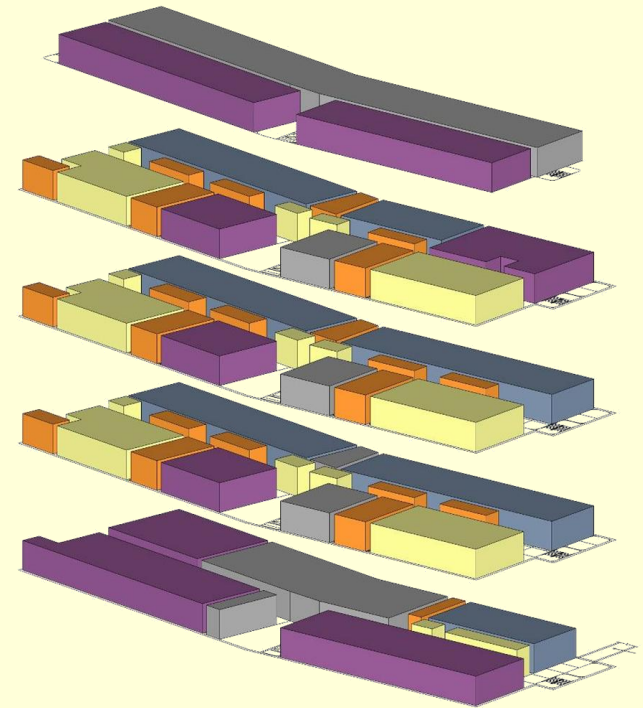
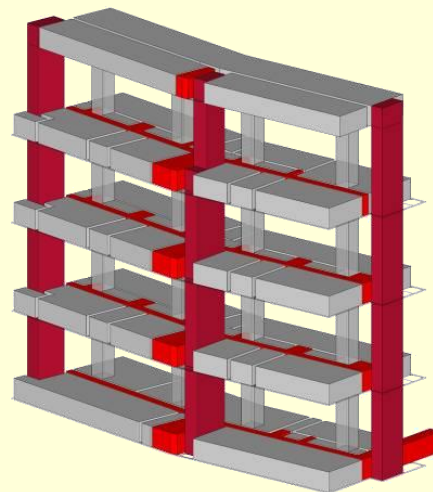


The UW-Milwaukee Initiative

The Future: Kenwood IRC

Key objectives:

- Integrate space for academic departments, collaboration, research, instruction and core facilities
- Initial phase of 150,000 gross square feet with future phases to support additional growth



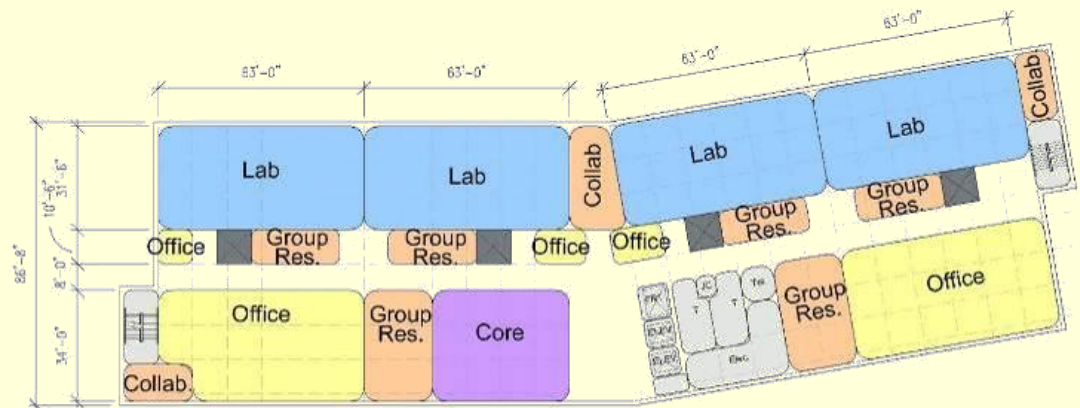
Space Type Color Key

 Office	 Teaching
 Collaboration	 Core
 Research Labs	 Circulation



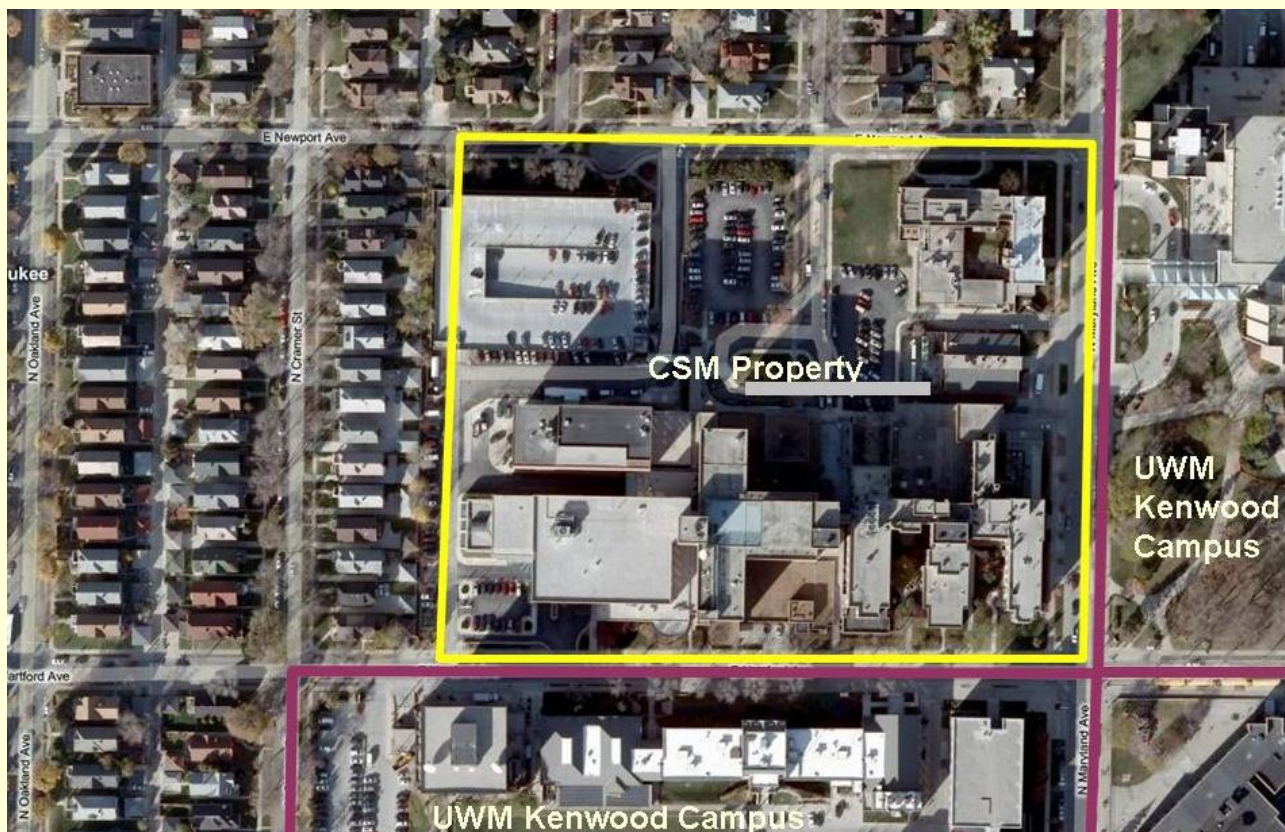
Research themes:

- Core facilities and laboratories for STEM (science, technology, engineering, mathematics) programs
- Imaging suite
- Physical and chemical properties and processing
- Growth facilities
(biological sciences, chemistry, physics, geosciences and related disciplines)





Columbia St. Mary's Hospital Campus





The UW-Milwaukee Initiative

The Future: Columbia St. Mary's

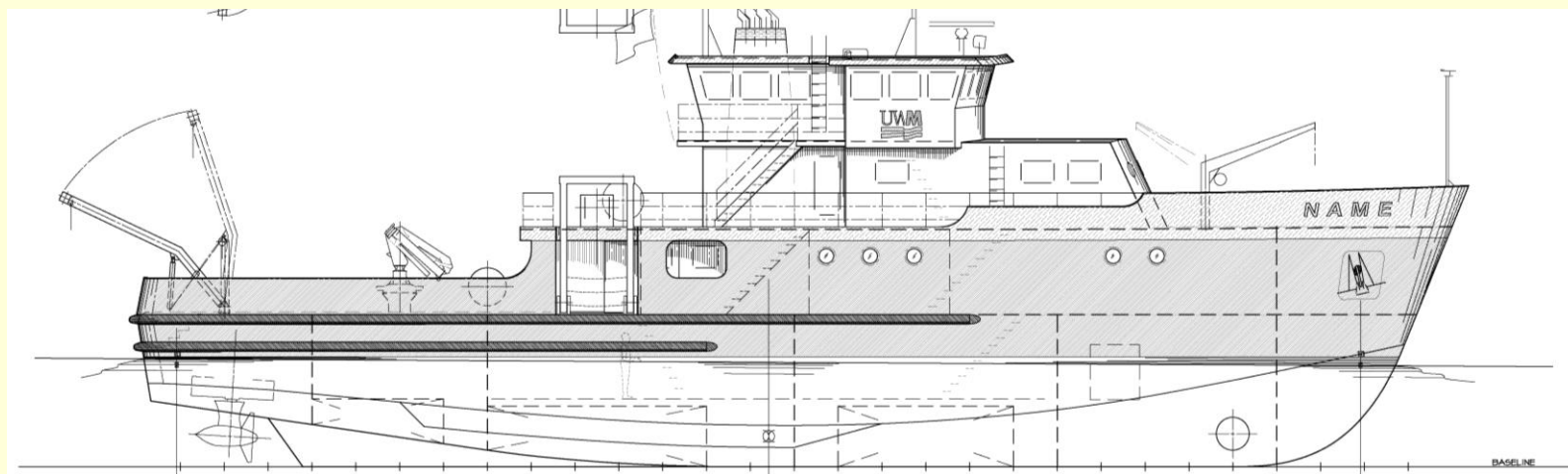
Key objectives:

- Mixed-use development
- Consolidate student services
- Green spaces
- Parking

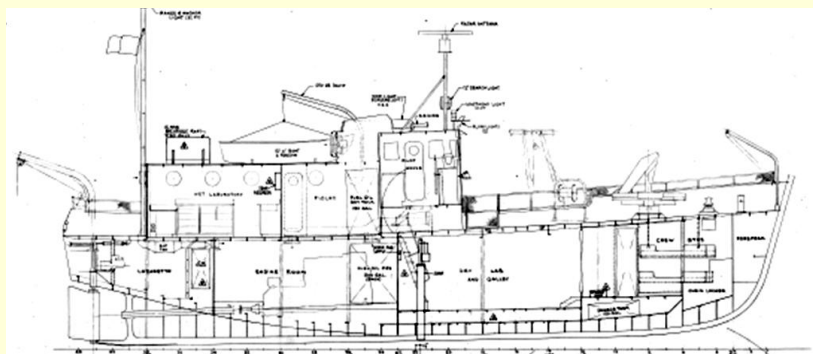




Build new research vessel



120 feet



71 feet



The UWM-Milwaukee Initiative

The Future: Build new research vessel

Key objectives:

- Research
- Education and training
- Public safety and welfare



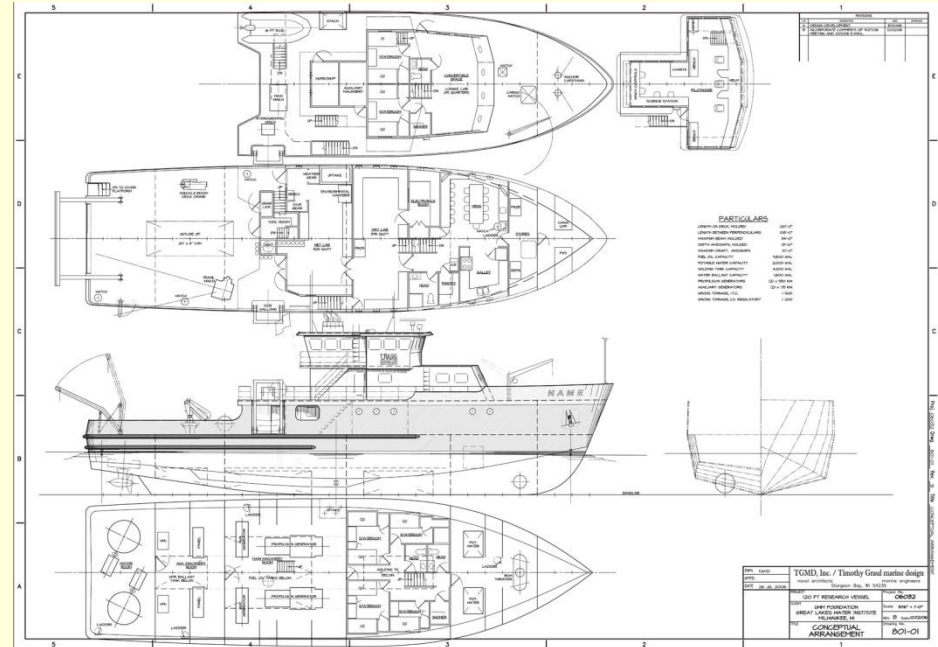


The UW-Milwaukee Initiative

The Future: Build new research vessel

Research themes:

- Aquatic system dynamics
- Freshwater sustainability
- Human and environmental health
- Freshwater technologies
- Policy, economics and management





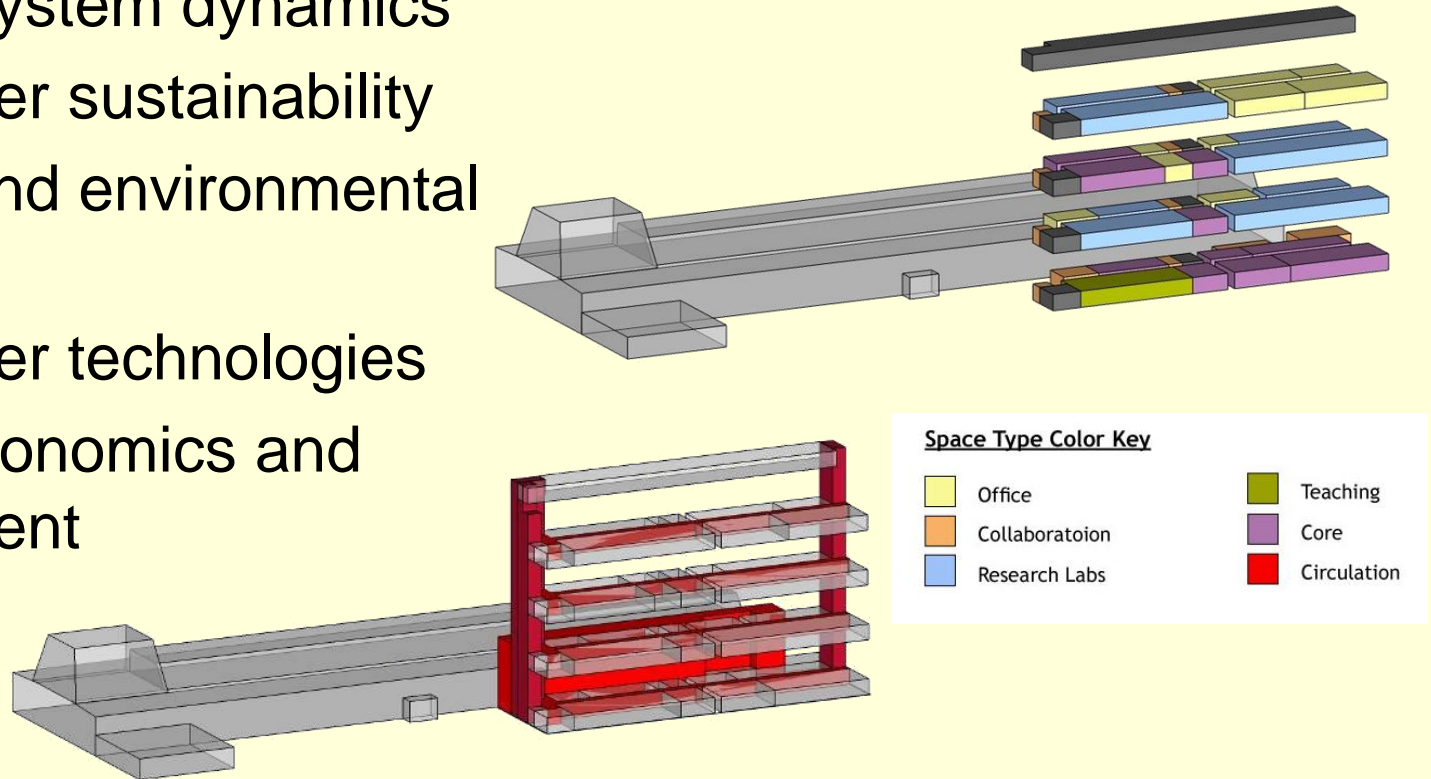
The UW-Milwaukee Initiative

The Future: School of Freshwater Sciences

Regents approved new facility in 2009

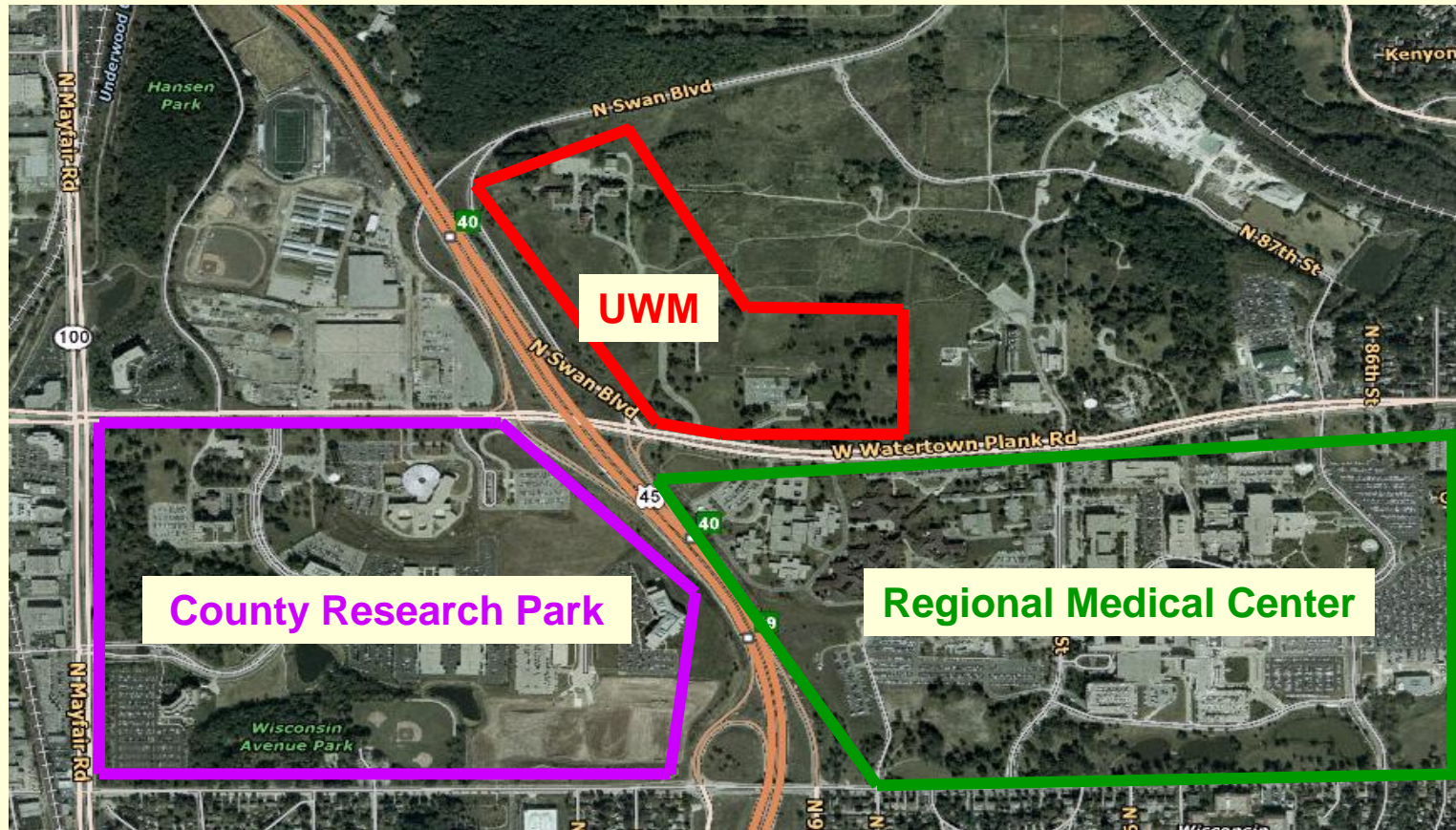
Research themes of new school:

- Aquatic system dynamics
- Freshwater sustainability
- Human and environmental health
- Freshwater technologies
- Policy, economics and management





Innovation Park Location and Facilities



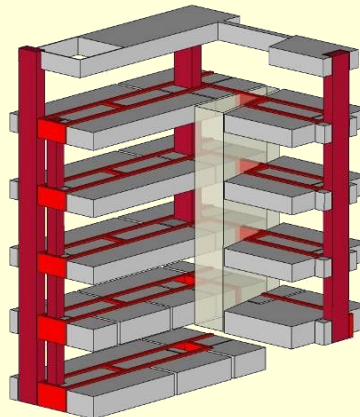
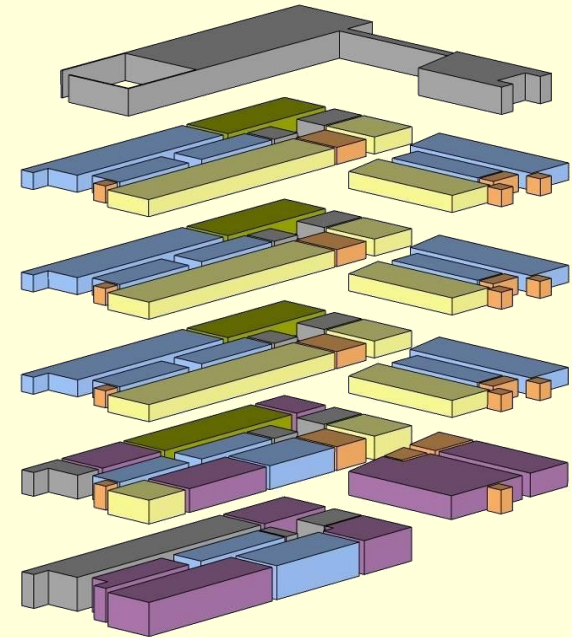


The UW-Milwaukee Initiative

The Future: Innovation Park

Key objectives:

- Partnerships with Medical College of Wisconsin, Froedtert Hospital, Children's Hospital, Blood Center of Wisconsin, GE Medical, Milwaukee County Research Park
- Accommodate research growth in emerging areas



Space Type Color Key

Office	Teaching
Collaboratoion	Core
Research Labs	Circulation

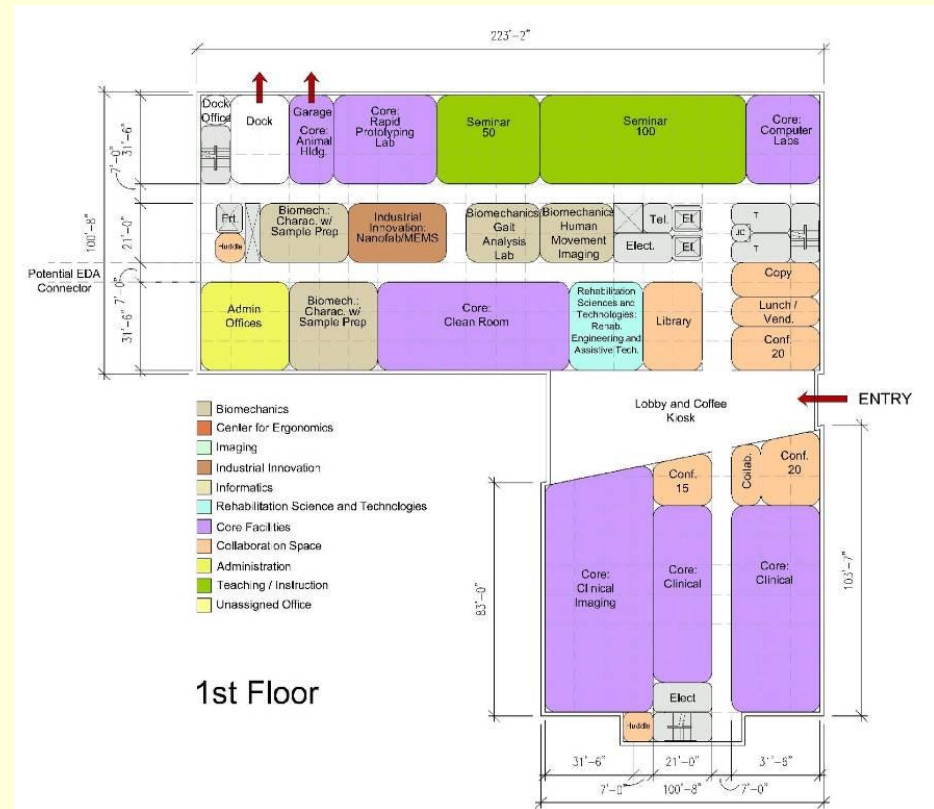


The UW-Milwaukee Initiative

The Future: Innovation Park

Research themes:

- Bioengineering
- Industrial innovation
- Informatics
- Energy
- Rehabilitation science and technologies





The UW-Milwaukee Initiative

The Future

Public, Community and Clinical Health, Phase I



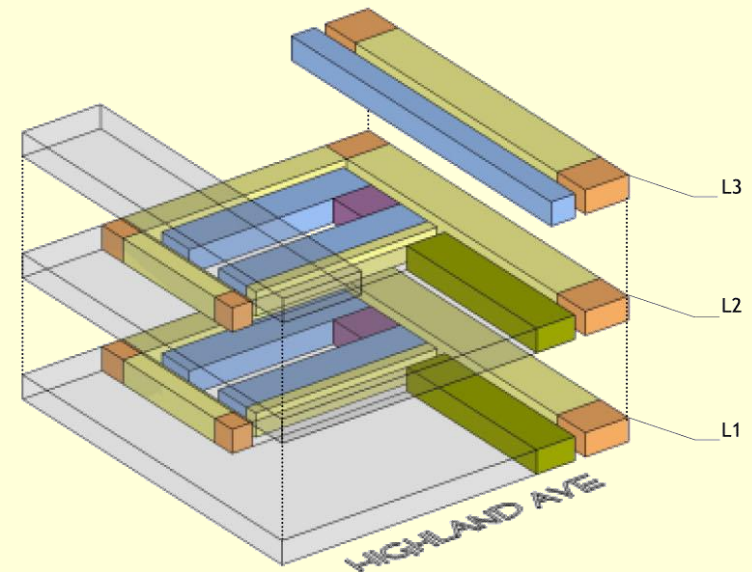
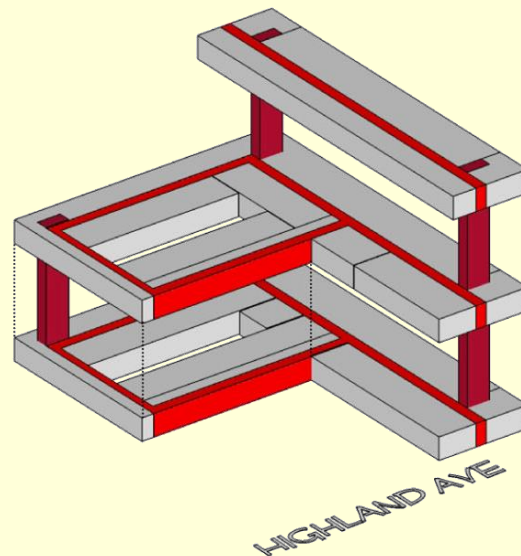


The UW-Milwaukee Initiative

The Future: Public, Community and Clinical Health

Key objectives:

- Create space for new School of Public Health faculty and research
- Locate to promote collaboration with partners



Space Type Color Key

Office	Teaching
Collaboration	Core
Research Labs	Circulation

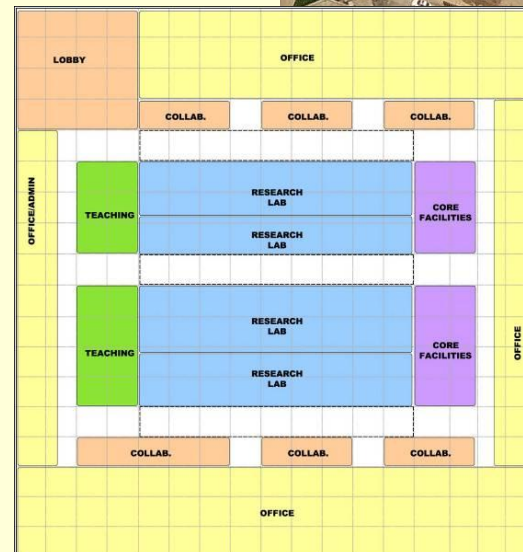


The UW-Milwaukee Initiative

The Future: Public, Community and Clinical Health

Research themes:

- Community and behavioral health
- Environmental and occupational health
- Epidemiology and biostatistics
- Policy, administration and health services



The UW-Milwaukee Initiative



Board of Regents – Jan. 8, 2010
UWM Chancellor Carlos E. Santiago