



UW System's Growth Agenda for Wisconsin *People, Jobs, and Communities*

**Rebecca Martin
Senior Vice President
University of Wisconsin System Administration**

Why a Growth Agenda?

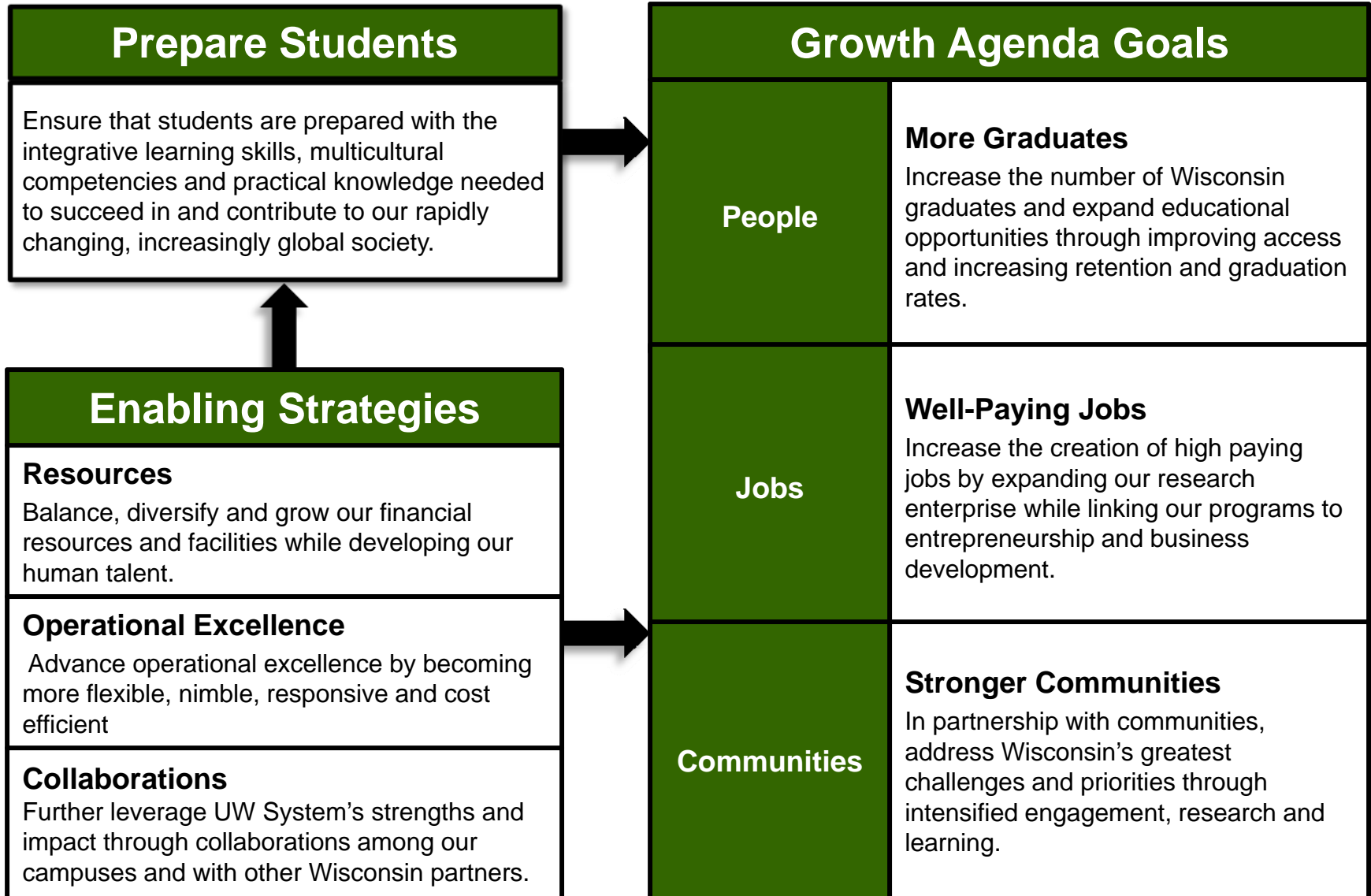
- If Wisconsin's educational attainment and per-capita incomes were equal to Minnesota's, our residents would bring home \$26 billion more every year.
- The US now ranks 10th among industrialized nations in the percentage of young adults (25-34) with college degrees. Leading nations (Canada, Japan, Korea) have over 50%, while US is at 39%.
- Our universal vision: Produce (and attract) more college graduates, support more well-paying jobs, and strengthen communities where citizens and employers alike will thrive.



How we got here

- ***Advantage Wisconsin*** planning process, with direct input from business/community leaders and campus constituents
- **Local strategies to address specific regional needs and leverage campus assets**
- **Bipartisan support for new investments in 2007-09, all designed to address over-arching areas:**
 - **People**
 - **Jobs**
 - **Communities**

Strategic framework



Growth Agenda Action Steps

- Shared Learning Goals
- Student Engagement Portfolio
- Leading Edge Jobs
- Inclusive Excellence
- New Pathways for Adult Learners
- KnowHow2Go Network
- Enrich College Preparation in Math
- UW-Madison Connections Program
- Operational Efficiency & Excellence
- Public Policy Forums
- Grow Financial Aid



Commit to Shared Learning Goals for All UW Baccalaureate Graduates

- **Developed by UW Faculty representing each of our institutions**
- **Endorsed by the Board of Regents in December 2008**
 - Knowledge of Human Cultures and the Natural World
 - Critical and Creative Thinking Skills
 - Effective Communication Skills
 - Intercultural Knowledge and Competence
 - Individual, Social, and Environmental Responsibility



Create the Student Engagement Portfolio

- **Focus on out-of-classroom learning**
- **Shows breadth of experiences to employer/grad school**
- **Progress to date and future plans:**
 - Focusing on e-portfolio
 - Identifying models in UW System and nationally
 - Fall 2009 systemwide workshop
 - One or two pilot initiatives - Fall 2009 or Spring 2010.



Accelerate Transformation of Knowledge Capacity into Leading-Edge Jobs and Economic Vitality for Wisconsin

- **Attract research funding & spur technology transfer at comprehensive institutions**
- **Study Research/Patent/Commercialization pathway to improve success**
- **UW-Platteville - Nanotechnology Center**
- **UW-Madison - Statewide Summit planned for April 2009**
- **UW-River Falls - Tissue and Cellular Innovation Center**



Model Inclusive Excellence in Our Education and Employment

- **Build on the goals of Plan 2008**
- **Integrate diversity into core efforts of the university**
- **Progress to date and future plans:**
 - **The Equity Scorecard Project**
 - **Climate Study**
 - **Inclusive Excellence Planning:** Systemwide conversations & articulation of strategies are in progress



Offer UW New Pathways to Wisconsin's Underserved Adult Population

- **Goal: Increase learning opportunities for working adults**
- **Making Opportunity Affordable (MOA) grant:**
 - Inventory & assessment of existing campus programs for adult learners
 - Focus groups to identify policy barriers that inhibit college degree attainment
 - Partnerships with WTCS, WAICU, and DPI
 - Strategic planning event with all of Wisconsin's education entities



Build a Wisconsin KnowHow2Go Network, enlisting college undergraduates, faculty, and staff as mentors to K-12 students

- **Goal: Undergraduates as mentors to PK-12 students**
- **Expand current programs:**
 - UW-Green Bay Phuture Phoenix
 - UW-Madison PEOPLE
- **New programs underway:**
 - UW-Marathon County Program (Dream)
 - UW-Eau Claire “Line Up for College”
- **Spring 2009 Systemwide event**



Collaborate with PK-12 community to enrich college preparation

- **Focus on math preparation with:**
 - DPI
 - WTCS
 - WAICU
- **Progress to date and future plans:**
 - Math Competency Alignment
 - Early Math Placement Tool
 - PK-16 Local Math Partnerships
 - Sharing Best Practices



Expand UW-Madison Connections Program

- **Dual-admission program**
- **Initial partners**
 - All 13 UW Colleges
 - 3 Wisconsin Technical Colleges
 - College of Menominee Nation
- **Partner Institutions added:**
 - UW-Green Bay
 - UW-Parkside
 - UW-River Falls
 - UW-Stevens Point
 - UW-Stout



Ramp up operational excellence and efficiency to focus more resources on the Growth Agenda for Wisconsin

- **Lean evaluation projects: streamline administrative activities/standardize business processes**
 - Procurement card processing
 - Non-salary payments to individuals
 - Travel expense reimbursements



- **Innovation Award Program: administrative improvements**
- **Share national conference presentations on administrative improvements with UW colleagues**

Establish New Wisconsin Idea Public Policy Forums that bring research to bear on Wisconsin's biggest challenges

- **Link UW expertise to problems facing State of Wisconsin**
- **First three Public Policy Forums:**
 - UW-Eau Claire (May 2009): Public policy on alcohol abuse
 - UW-Madison (Fall 2009): Focus on Education Policy Issues in Wisconsin
 - UW Colleges/Extension (Spring 2010): Building Sustainable Communities



Increase Private Need-based Financial Aid to Supplement State and Federal Assistance to Students

- **John and Tashia Morgridge:** \$175 million for Fund for Wisconsin Scholars
- **Great Lakes Higher Education Guaranty Corporation:** \$40 million for Wisconsin Covenant
- **University of Wisconsin Credit Union:** \$1.5 million for need-based scholarships after match by UW Foundation
- **UW-Madison “Great People. Great Place.”:** \$3.3 million for need-based scholarships

