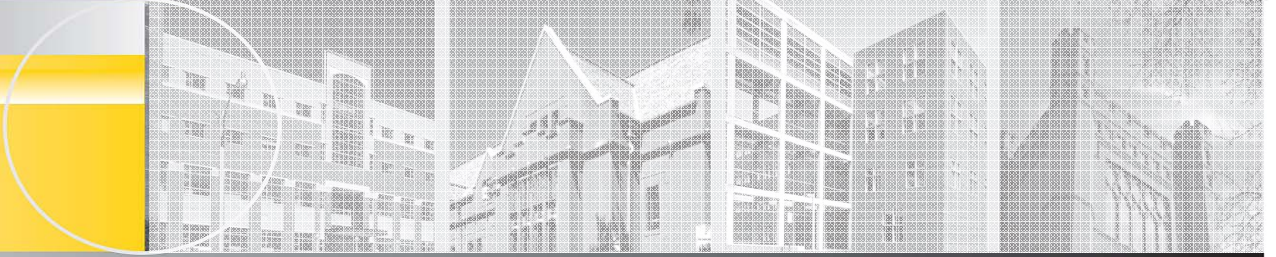


MASTERPLAN



UWM Master Plan Update

UW System Board of Regents

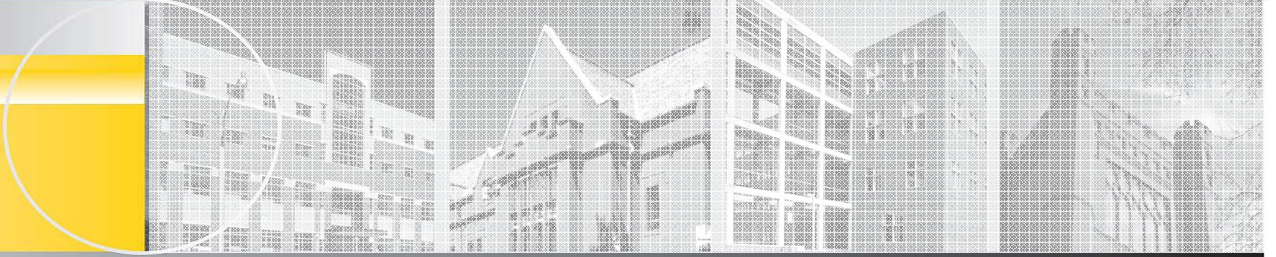
June 5, 2008



Master Plan Consultant
Public Launch Event
April 4, 2008



MASTERPLAN



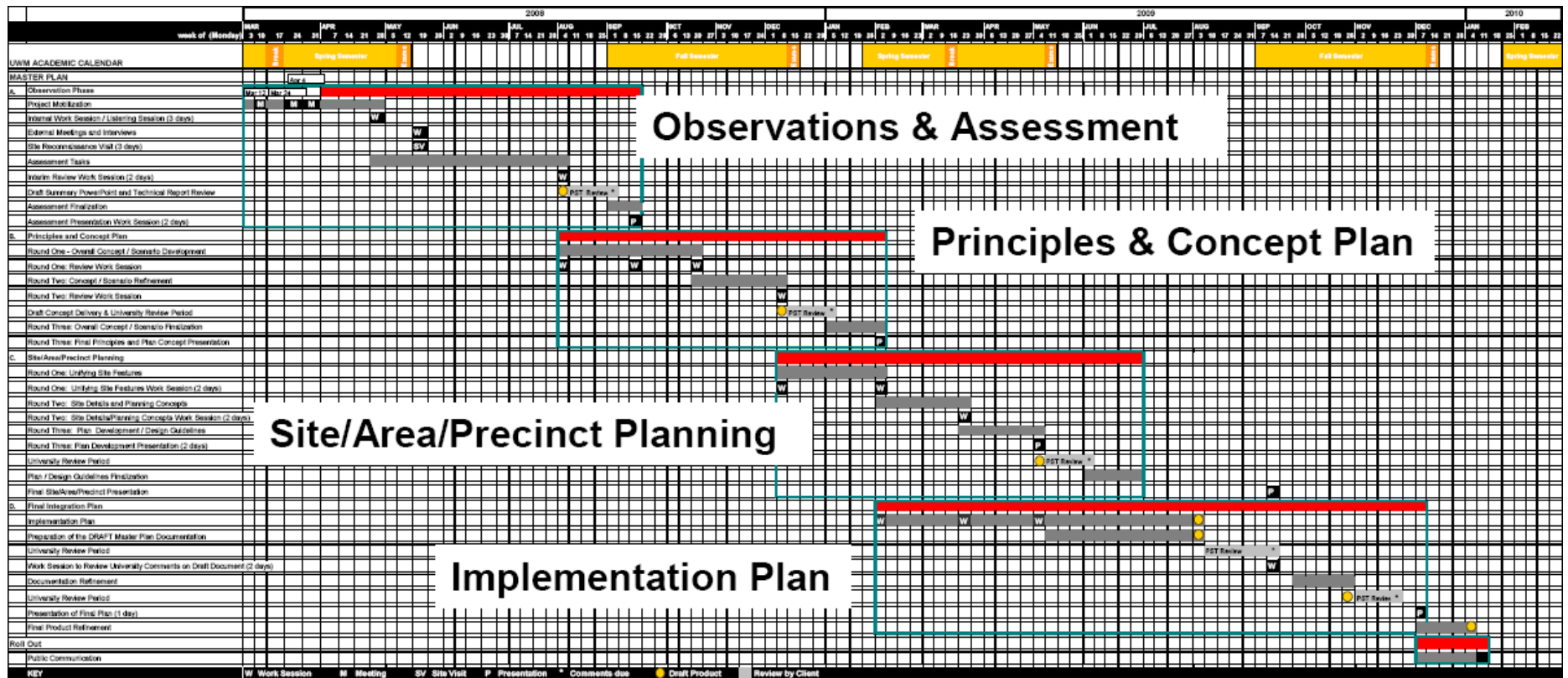
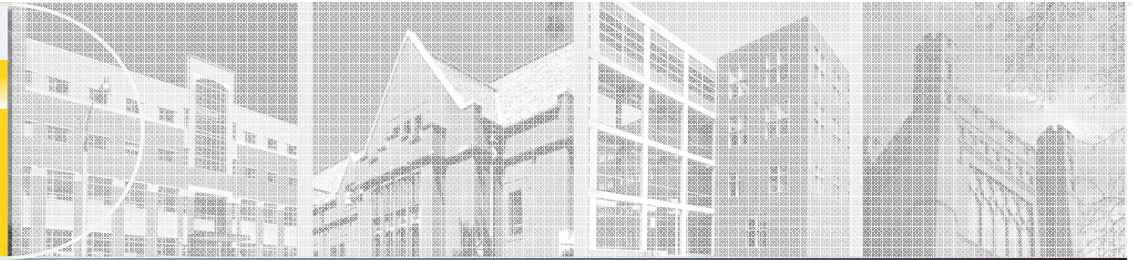
HGA Architects and Engineers

S A S A K I

The Consulting Team



MASTERPLAN



Project Timeline

Listening Sessions with:

- Academic departments
- Administrative units
- Campus governance groups
- Students
- Neighborhood groups

Phase I: Observations & Assessment

April – September '08



MASTERPLAN



Phase I: Observations & Assessment

Over the summer:

- Site observations
- Information evaluation
- Transportation study



What comes next

MASTERPLAN



- Overall campus concept
- Scenario development
- Delivery of findings to campus community

Phase II: Principles & Concept Plan

August '08 – February '09



MASTERPLAN

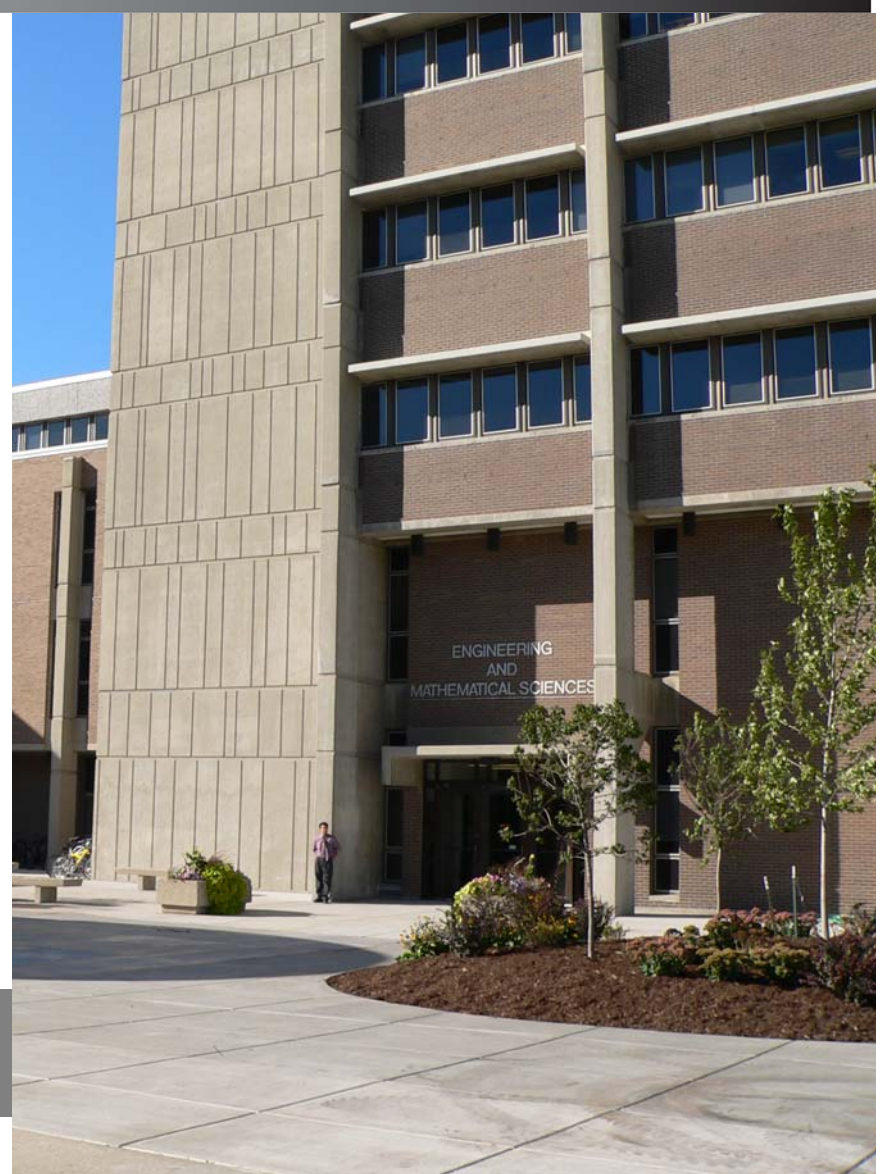


- Unifying site features
- Plan development
- Design guidelines
- Planning concepts

Phase III: Site/Area/Precinct Planning

December '08-July '09

--Board of Regents Update, June '09--



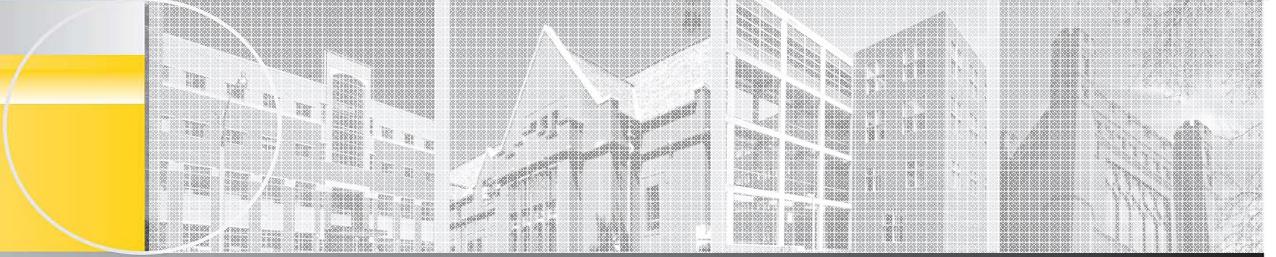
- Document creation
- University review
- Final presentation

Phase IV: Implementation Plan

February – December '09



MASTERPLAN



Joseph Zilber School of Public Health
Downtown Milwaukee

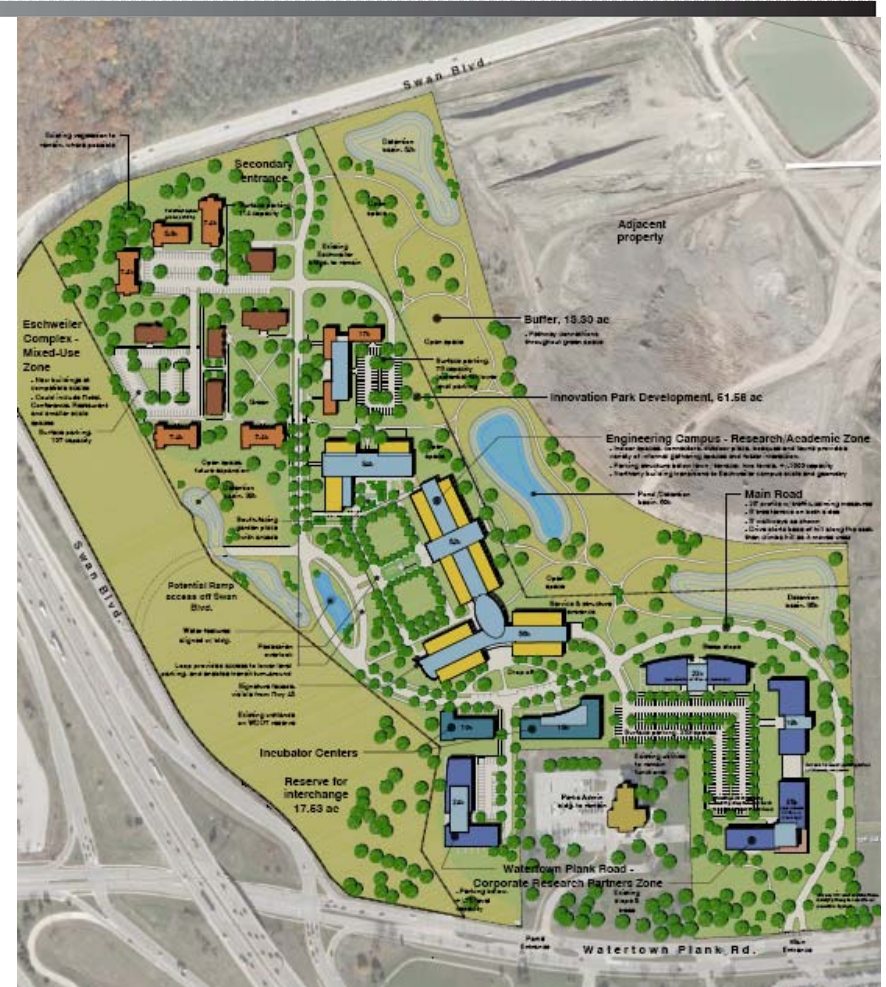


Potential Sites For Growth

MASTERPLAN

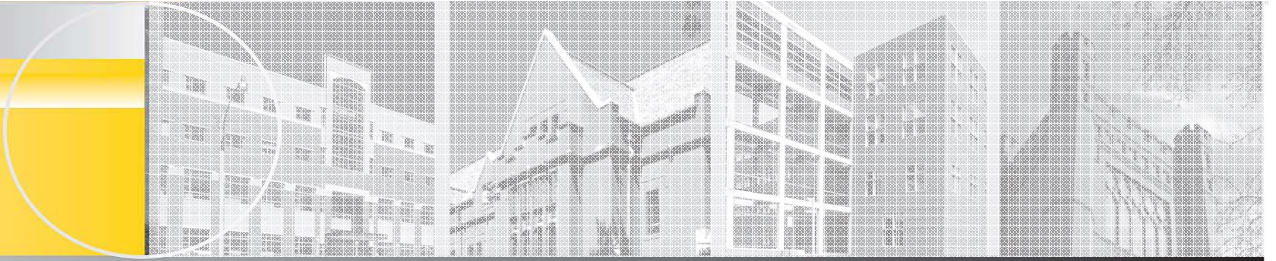


Milwaukee County Grounds Watertown Plank Rd.



Potential Sites For Growth

MASTERPLAN



Columbia-St. Mary's Hospital
Adjacent to campus

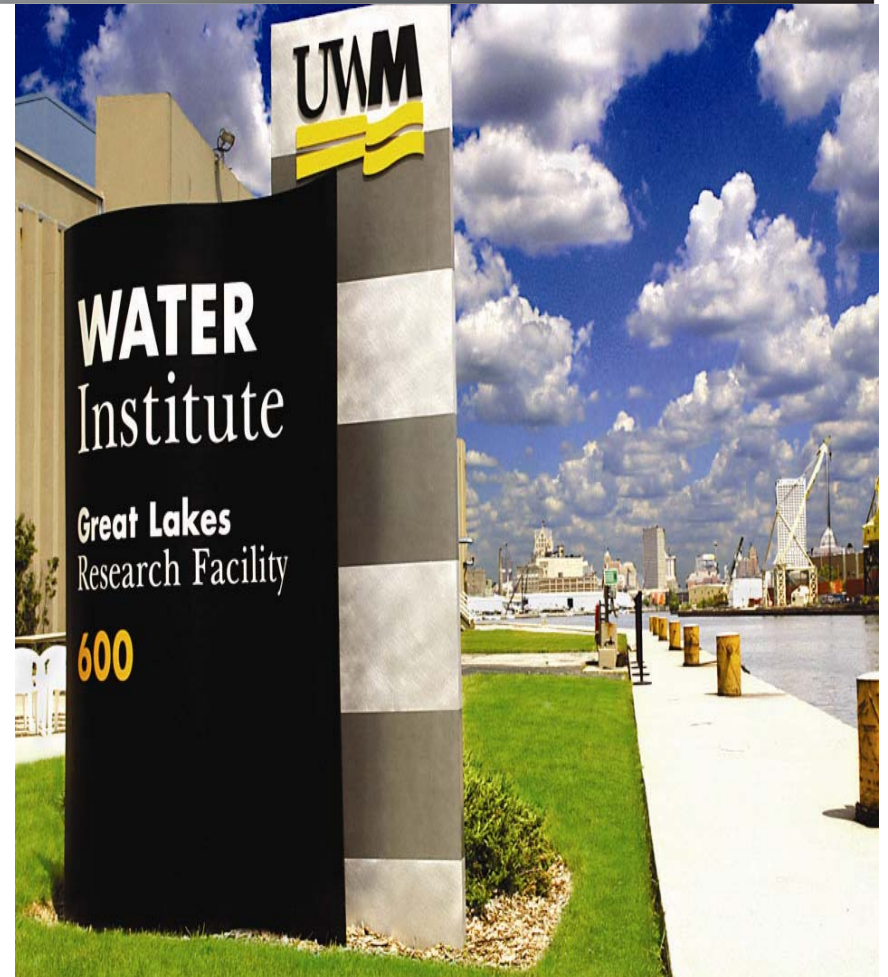


Potential Sites For Growth

MASTERPLAN

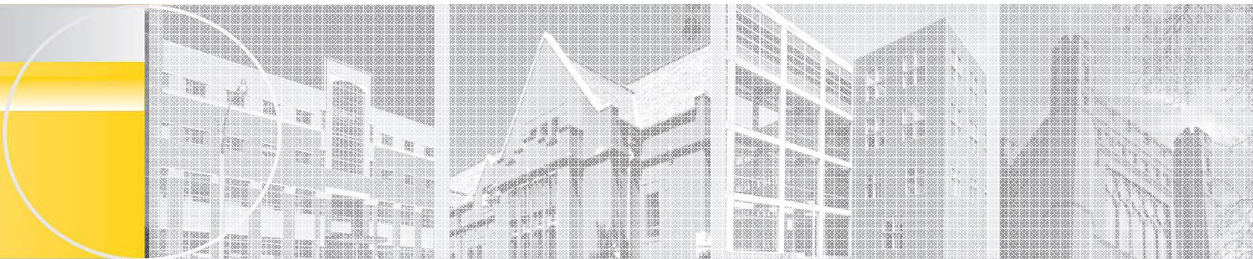


Great Lakes Research Facility/
WATER Institute
Near south side of Milwaukee



Existing Site For Growth

MASTERPLAN



Questions
Comments



*Building the Research
University of the Future*