

UW-Milwaukee Report on Four Differential Tuition Programs

Rita Cheng

**Provost and Vice Chancellor for Academic
Affairs**

Differential Tuition Revenue 3-year totals

- \$1.6 M in the Peck School of the Arts
- \$650,000 in the College of Engineering and Applied Science
- \$2.6 M in the Sheldon B. Lubar School of Business
- \$800,000 in the College of Nursing

Black & Gold Committees



Student Support

- Differential tuition approved to continue by students affected
 - College of Nursing Black & Gold Committee
 - Peck School of the Arts Black & Gold Committee
 - Sheldon S. Lubar School of Business Black & Gold Committee

Student Support

- Differential tuition approved to continue by students affected
 - College of Engineering and Applied Science Advisory Committee on Differential Tuition
- Also endorsed by UWM Student Association and Senate

Funding addresses needs in

1. Technologies important for the discipline
2. Instructional quality
3. Student services

Technology and Equipment

Nursing: Patient Simulator



Sheldon S. Lubar School of Business



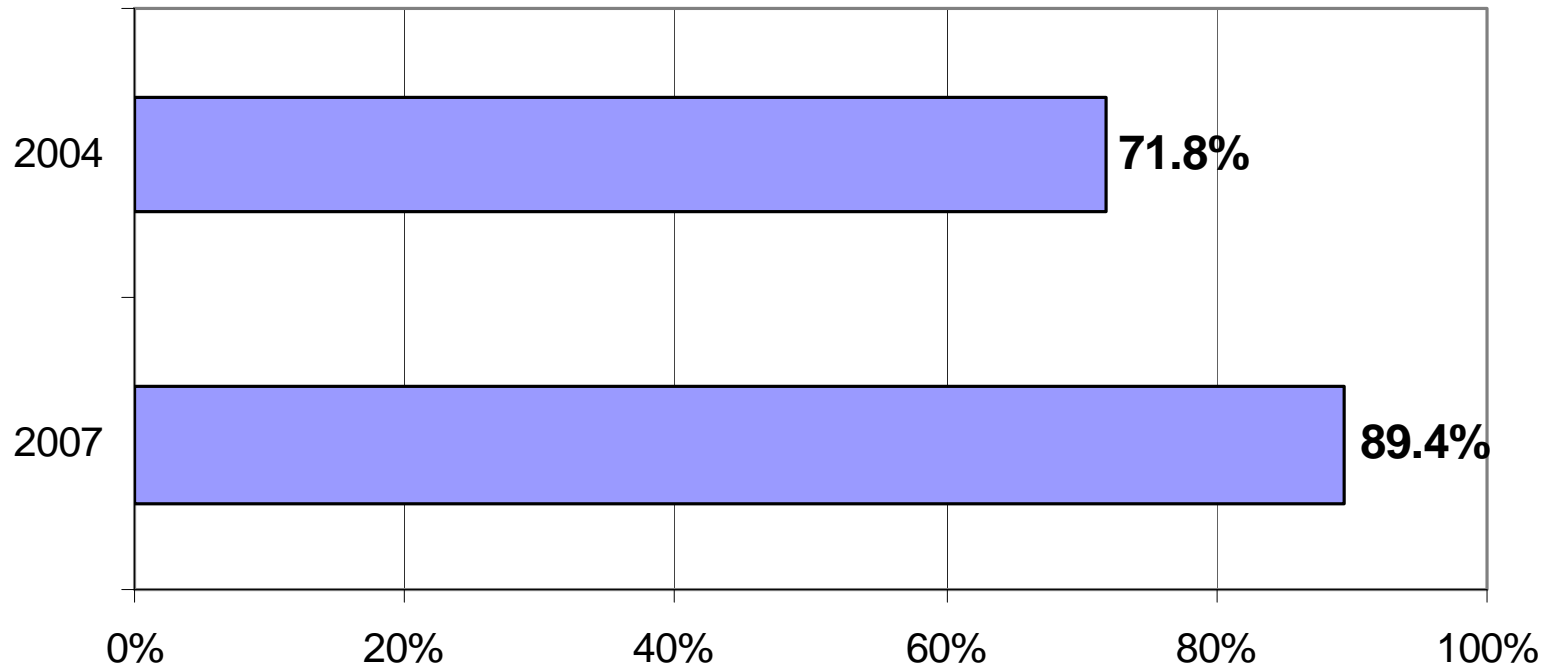
Peck School of the Arts



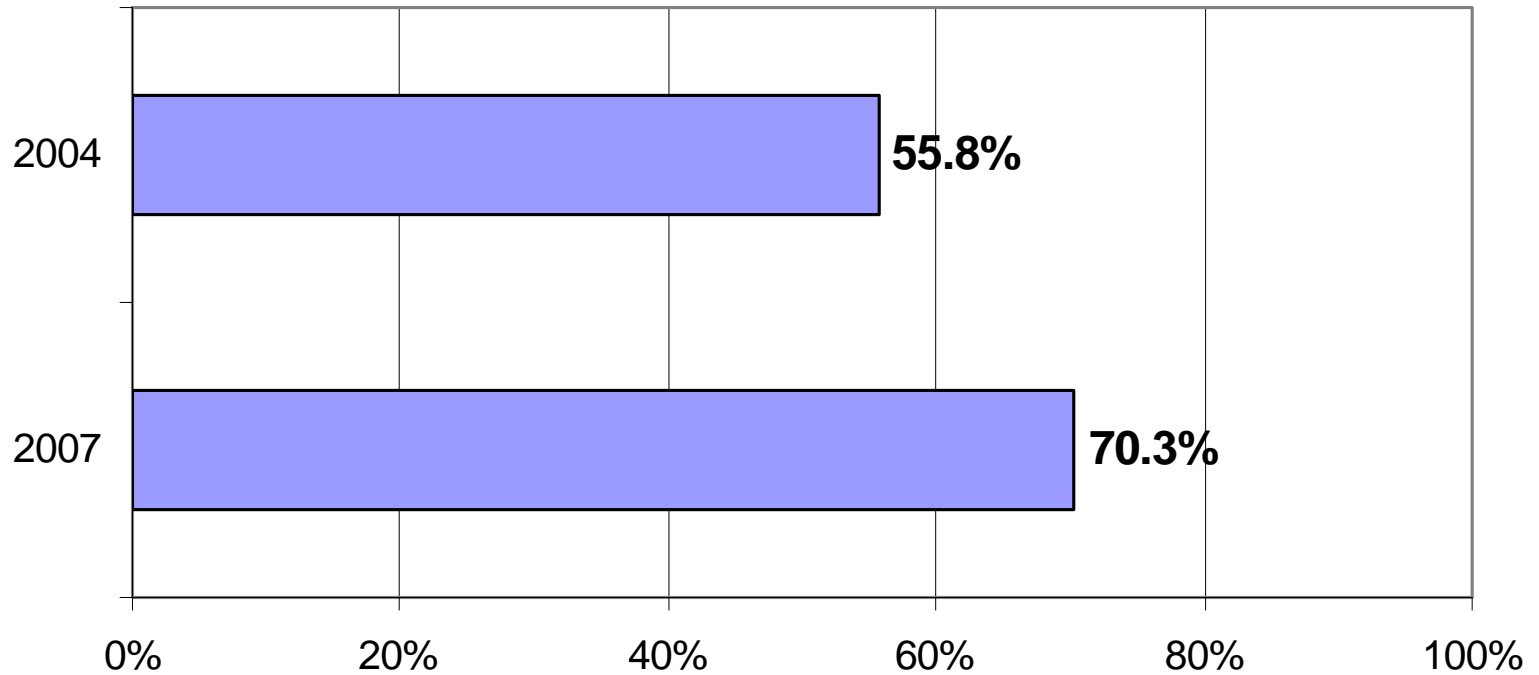
Engineering: Laboratory Equipment



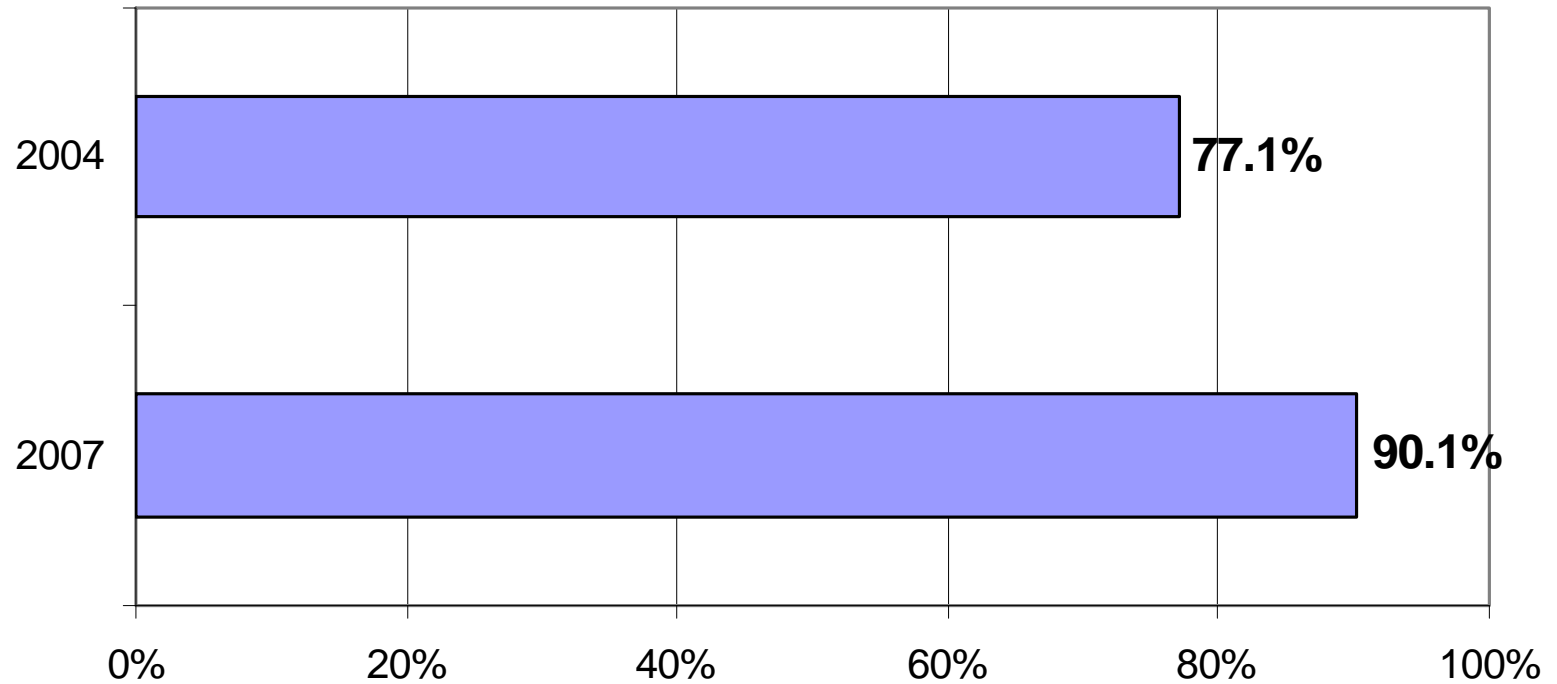
College of Nursing Graduating Seniors Rating Preparation for Future Career as Excellent or Good



**College of Engineering and Applied Sciences Graduating Seniors
Rating Classrooms and Facilities as Excellent or Good**



**College of Engineering and Applied Sciences Graduating Seniors
Rating Computer Labs and Services as Excellent or Good**



Quality of Instruction

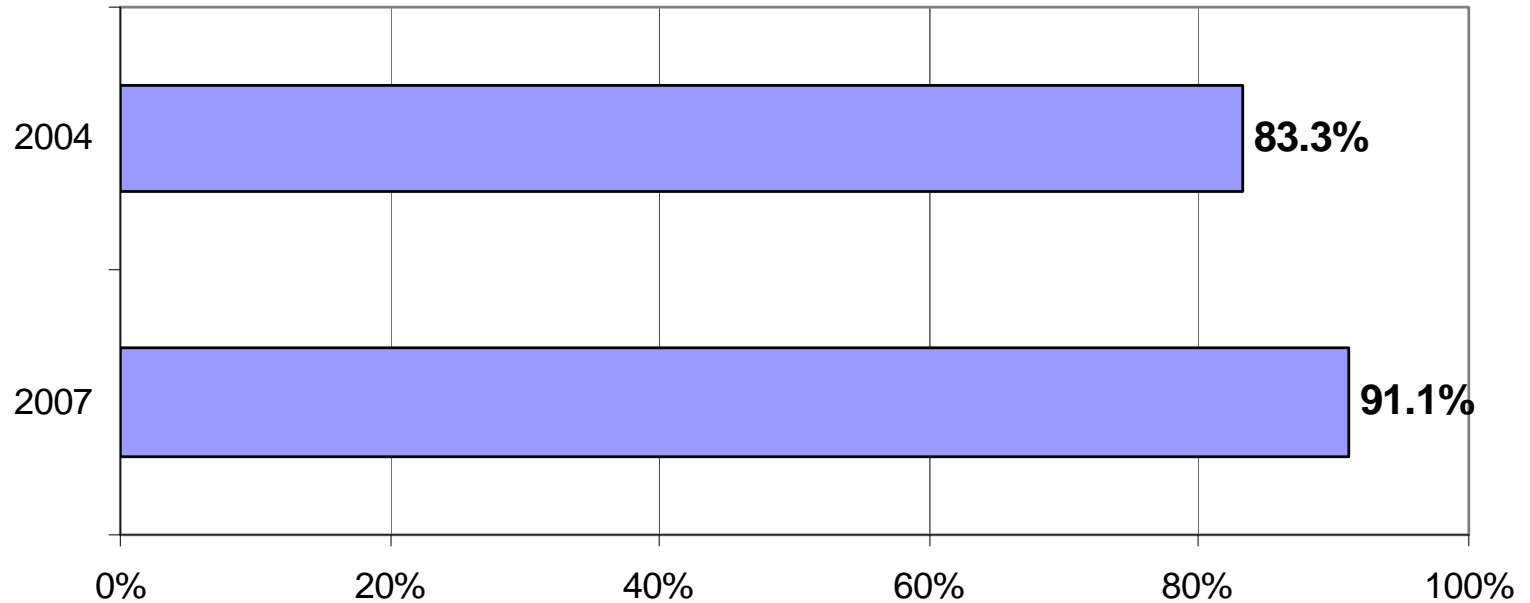
Peck School of the Arts: Visiting Artist



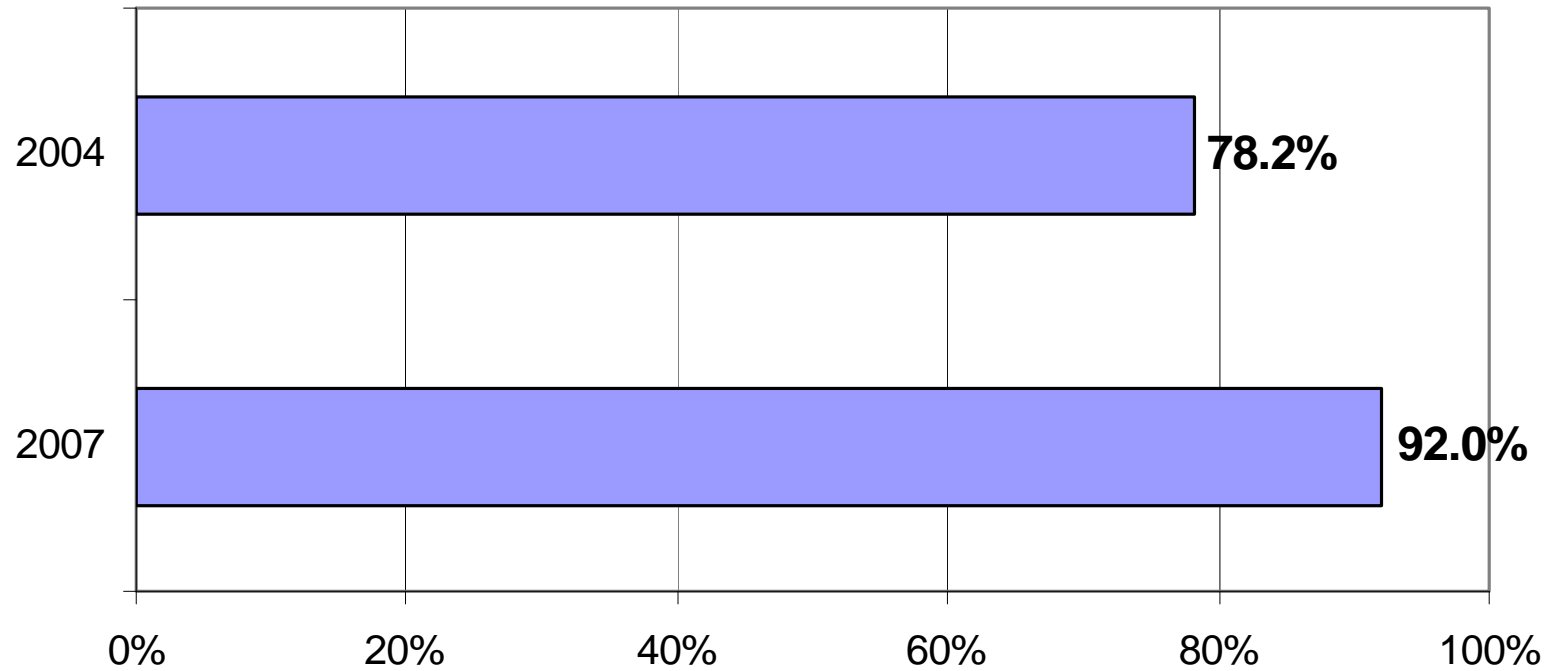
Sheldon S. Lubar School of Business



**School of the Arts Graduating Seniors
Rating Access to Faculty/Staff as Excellent or Good**



College of Nursing Graduating Seniors Rating Instructional Quality as Excellent or Good



Academic & Student Services

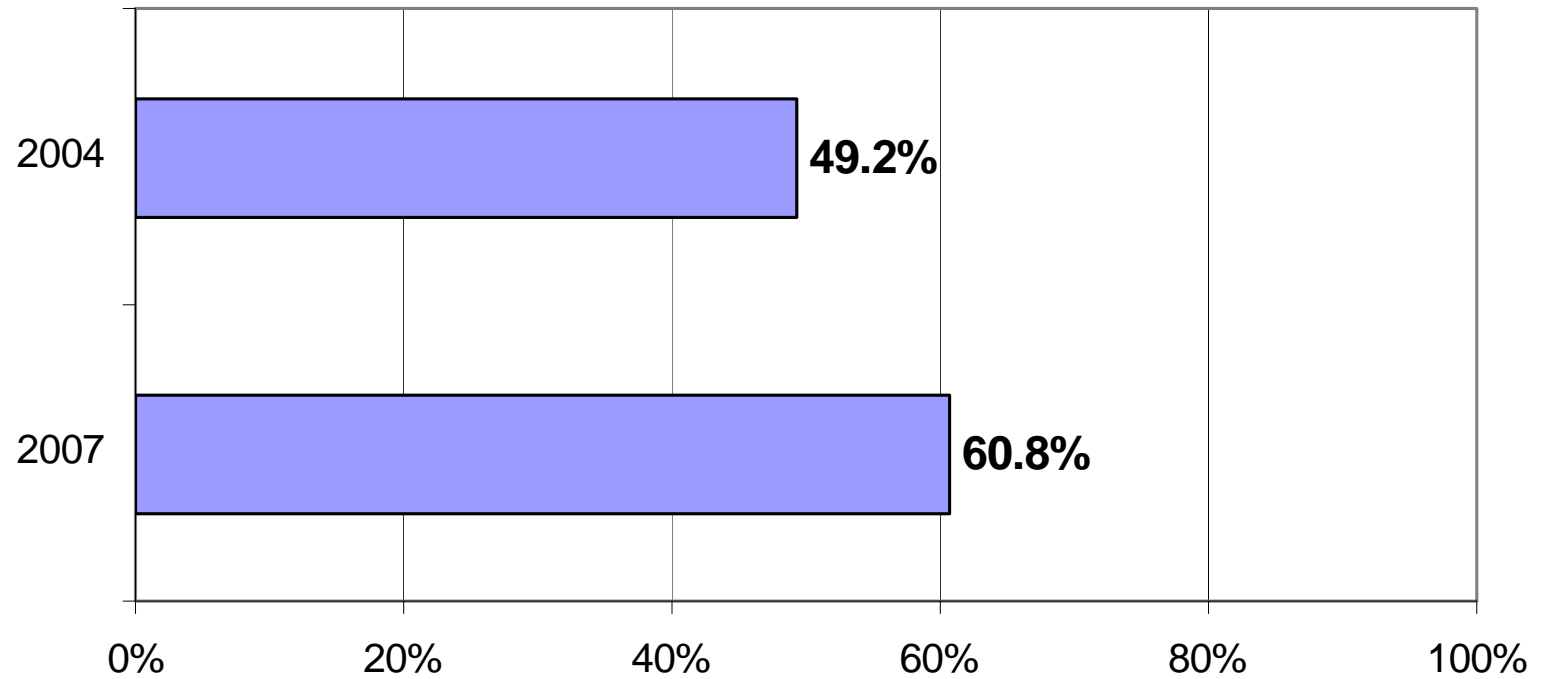
Advising



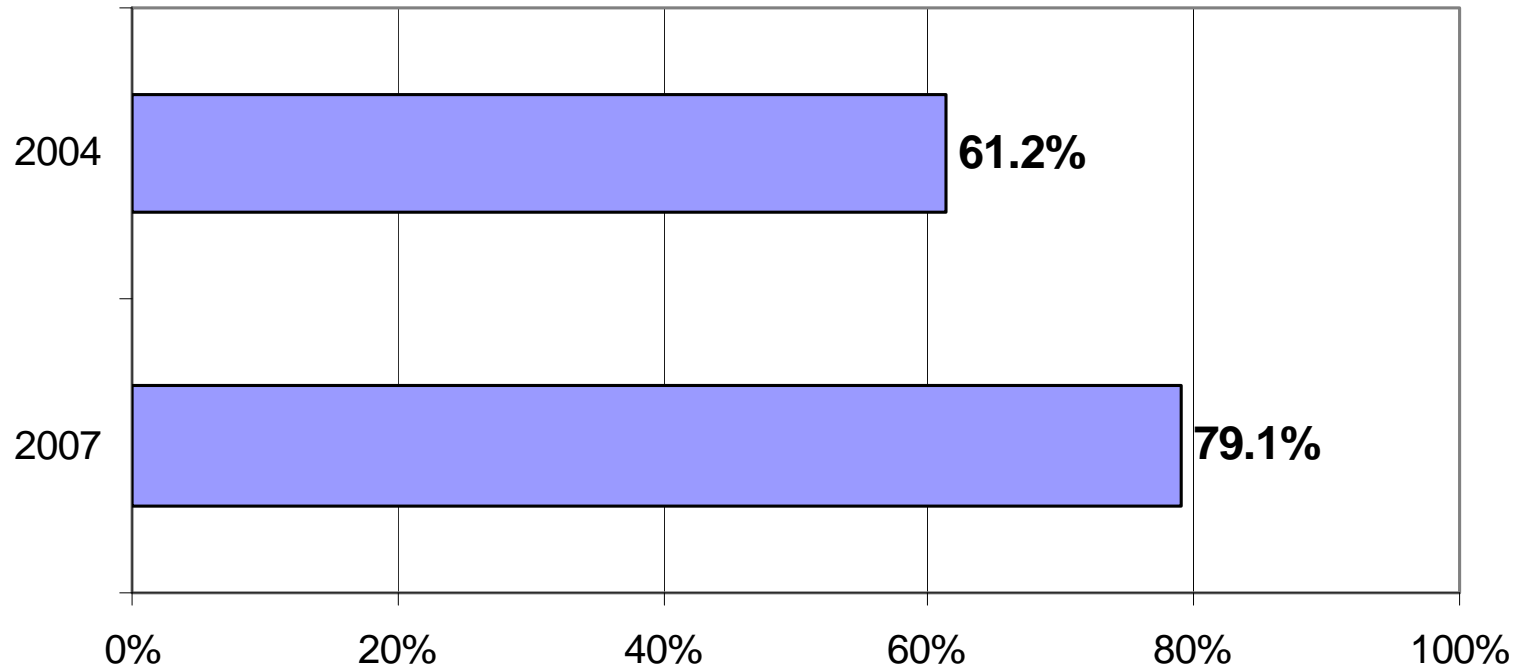
Career Fair



**School of Business Graduating Seniors
Rating Career Advising and Job Placement Services as Excellent or Good**



**School of Business Graduating Seniors
Rating Academic Advising as Excellent or Good**



Differential Tuition Impact

