

Wisconsin Partnership Program

University of Wisconsin School of Medicine and Public Health



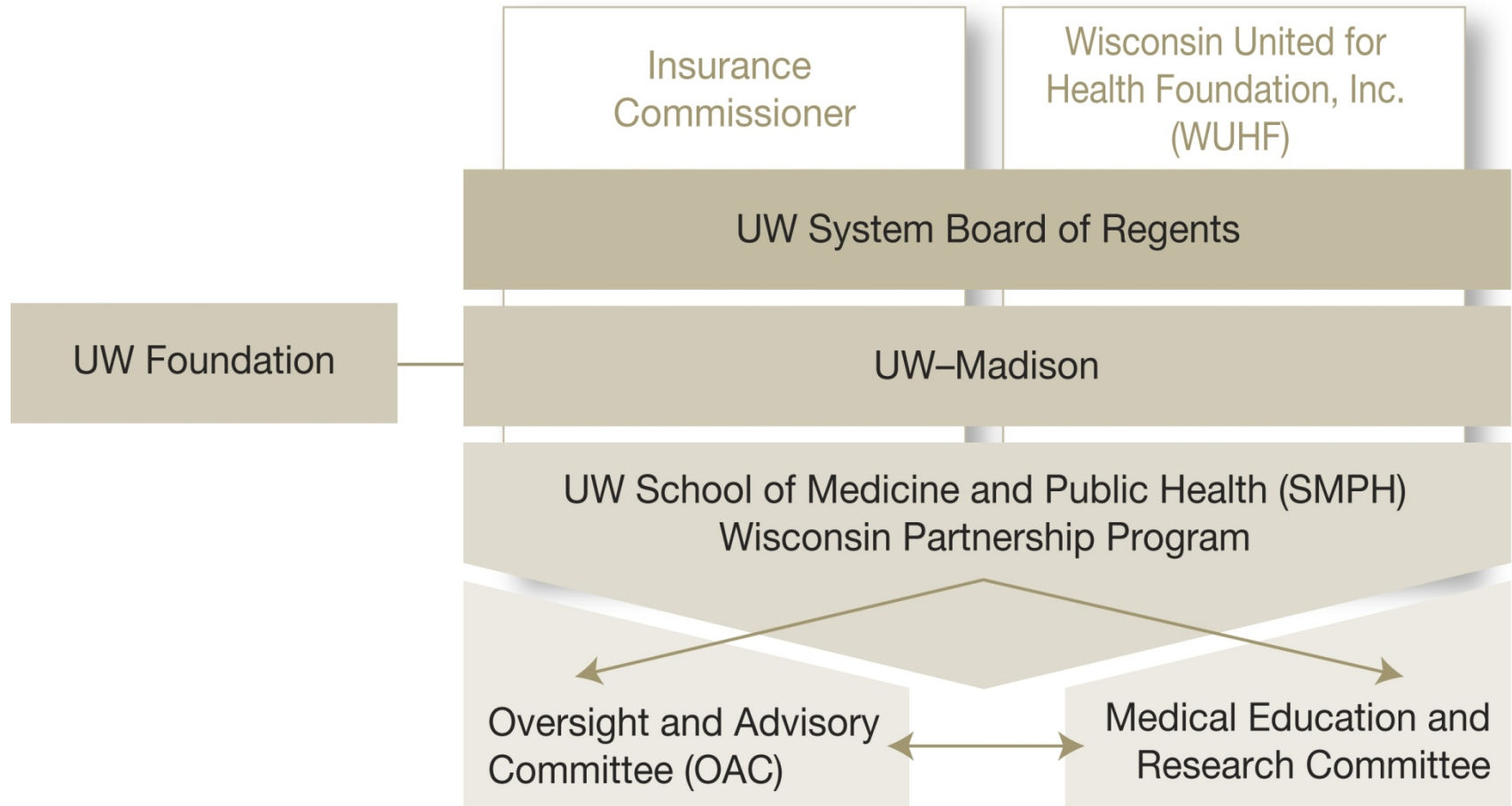
2009-2014 Five-Year Plan



Robert N. Golden, MD
Dean, UW School of Medicine and Public Health
Vice Chancellor for Medical Affairs
UW-Madison

December 4, 2008

Wisconsin Partnership Program Governance



Board of Regents Responsibilities

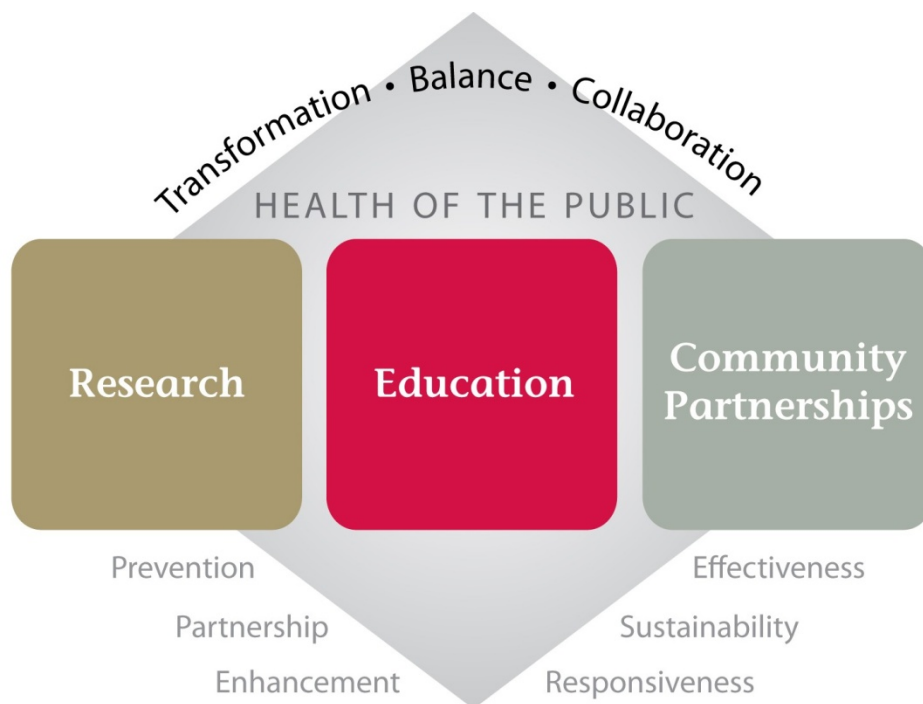
- Created Oversight and Advisory Committee (OAC)
 - Appoint members
 - Approve bylaws
- Review and approve five-year plans
- Review and accept annual reports
- Review program and financial audits at least every five years



Statement of Purpose

Mission: Serve the public health needs of Wisconsin and reduce health disparities through initiatives in research, education and community partnerships.

Vision: Making Wisconsin a healthier state for all.



Organizational Strategies

- **Transformation**

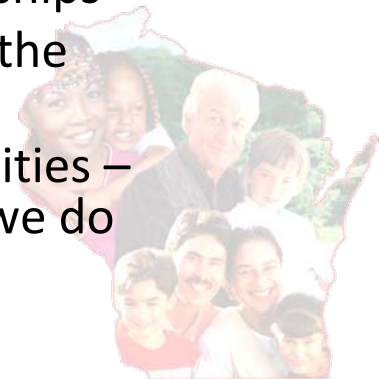
- Integrate medicine and public health within the missions of the School
- Support the Wisconsin Idea by promoting health and reducing health disparities

- **Balance**

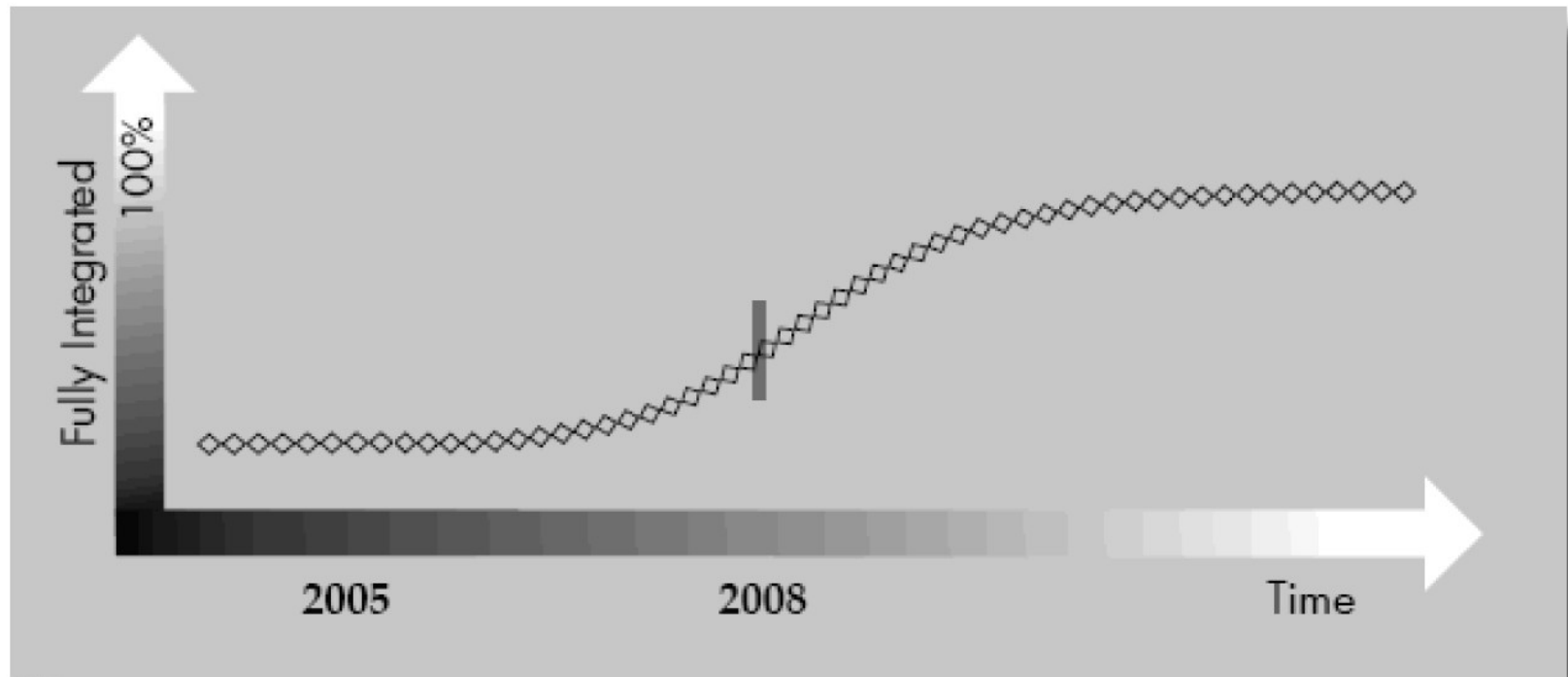
- Maintain a balanced portfolio of education and research initiatives and community academic partnerships

- **Collaboration**

- Promote community engagement through partnerships
- Encourage faculty and staff collaborations beyond the boundaries of the School
- Accelerate the sharing of knowledge with communities – closing the gap between what we know and what we do



Progress Towards a Fully Integrated School of Medicine and Public Health

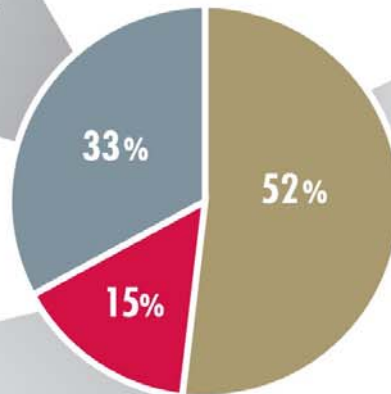


Wisconsin Partnership Program Grant Awards by Category

Community-Academic Partnerships

Collaboration Development Grants	\$2,169,030
Collaboration Implementation Grants	\$20,501,876
	\$22,670,906

Total Awards
\$68,887,681



Research

MERC Focus Areas	\$23,537,279
New Investigator Program	\$2,882,810
Collaborative Health Sciences Program	\$4,285,535
Strategic Initiatives	\$5,020,074
	\$35,725,698

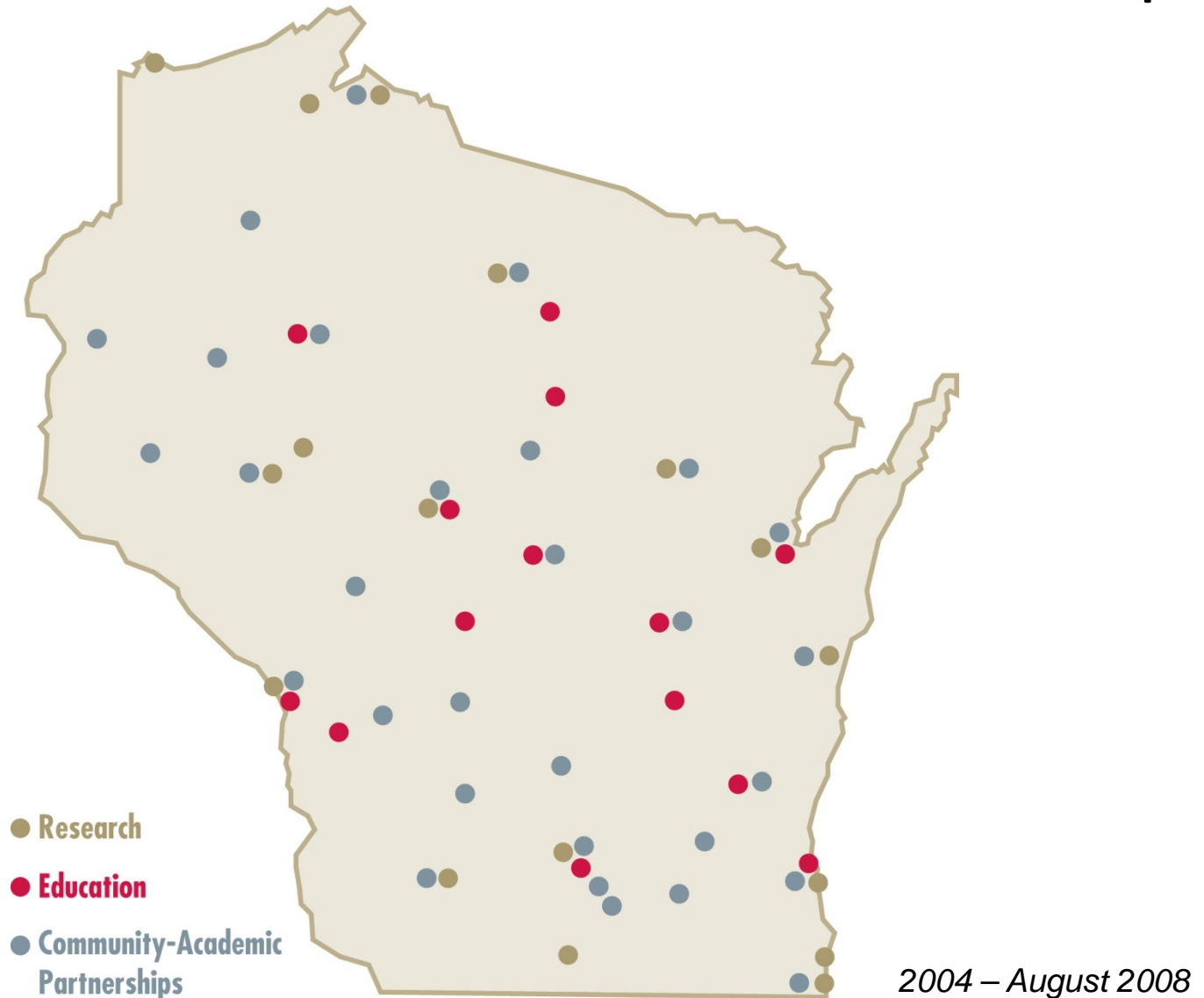
Education

Innovations in Medical Education	\$3,414,780
Master of Public Health	\$2,682,977
Wisconsin Academy for Rural Medicine	\$846,504
Education and Conference Resources	\$305,560
Medical Resident Education	\$299,726
Public Health Education and Training	\$2,941,530
	\$10,491,077

- Oversight and Advisory Committee (OAC)
- Medical Education and Research Committee (MERC)

2004 – August 2008

Statewide Collaborations and Partnerships



2004-2008 Program Highlights

- New funds leveraged (\$19.5 million from an investment of \$3 million)
- Medical research discoveries
- Better prepared health workforce
- New public health programs implemented
- Health policies enacted



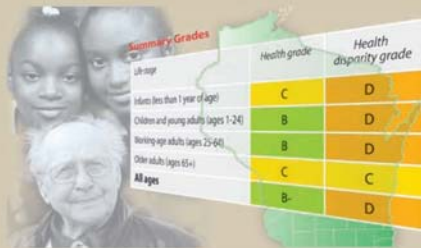
2009-2014 Five-Year Plan Considerations

- Transforming the School: The Strategic Plan
- Learning from the Community: Stakeholder and Public Response
- Measuring Progress: Wisconsin Partnership Program Evaluation
- Statewide Health Assessment: *Making Wisconsin the Healthiest State*



Statewide Health Assessment

Health of Wisconsin



REPORT CARD

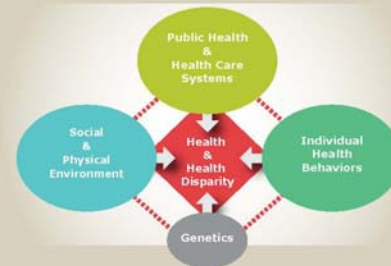
July 2007



University of Wisconsin
SCHOOL OF MEDICINE
AND PUBLIC HEALTH

University of Wisconsin Population Health Institute
Department of Population Health Sciences

Opportunities to Make Wisconsin the Healthiest State



February 2008



University of Wisconsin
SCHOOL OF MEDICINE
AND PUBLIC HEALTH

University of Wisconsin Population Health Institute
Department of Population Health Sciences

OAC Plan Framework: Community-Academic Partnership Fund

- **Continuing Initiatives**
 - Development grants
 - Implementation grants
- **New Initiatives**
 - Sustainability grants
 - Targeted funding initiatives



Community-Academic Partnership Fund

- **Improve the balanced portfolio**
 - Increase statewide reach to rural and smaller organizations
 - Support successful programs through sustainability grants
- **Create stronger community-academic partnerships**
 - Work toward better matching of academic and community partner needs
 - Support networks to engage faculty working with communities
- **Enhance learning and sharing**
 - Convene grantees working in common areas
 - Disseminate evidence-based public health practices
 - Communicate partnership successes
- **Strengthen community capacity**
 - Provide technical assistance in grant writing, evaluation and partnership development



OAC Plan Framework: Public Health Education and Training

- **Continuing Initiatives**
 - Healthy Wisconsin Leadership Institute
 - Wisconsin Population Health Fellowship Program



MERC Plan Development

- Strategic planning session held in September 2007 with OAC participation
- Subcommittees on education, research and community engagement established
- Subcommittees developed goals, strategies and future initiatives
- MERC finalized the plan framework



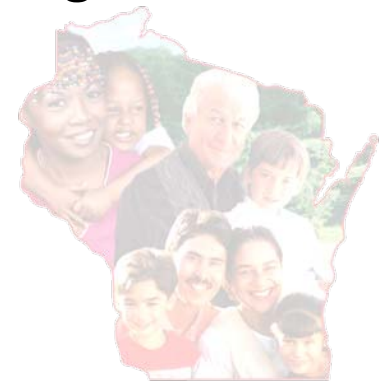
MERC Plan Framework: Education

- **Continuing Initiative**

- Master of Public Health program
 - Exploration of a distance education program

- **New Initiatives**

- Redesign the 3rd and 4th medical school clinical years
- Develop scholarly concentrations for medical students
- Establish a professional training program for graduate students and post-doctoral trainees



MERC Plan Framework: Research

- **Continuing Initiatives**

- Collaborative Health Sciences Program
- New Investigator Program
- Renewals of selected targeted core programs funded in the initial Five-Year Plan

- **New Initiative**

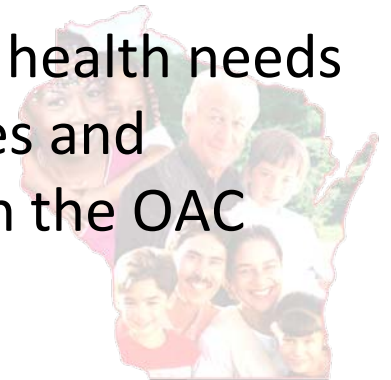
- Competitive program targeted to addressing obesity, alcohol abuse, and/or health policy



MERC Plan Framework: Community Engagement

- **New Initiatives**

- Expand community-based research focused on applied public health, health services research and health policy development
- Support and develop faculty interested in conducting community research
- Provide evaluation resources, program planning and technical assistance to community organizations
- Engage students in addressing community health needs by expanding service learning opportunities and developing collaborative relationships with the OAC



MERC Plan Framework: Common Subcommittee Priorities

- **New initiatives**

- Faculty development and expansion in selected areas, such as public and community health, health services research and health policy
- Collaboration of OAC and MERC through joint funding to address public health issues



OAC: A public member's perspective

- Development of 2009-2014 Five-Year Plan
- Advice and comment on MERC expenditures
- Evaluation of the Wisconsin Partnership Program



Questions

Wisconsin Partnership Program

UW School of Medicine & Public Health

750 Highland Avenue, 4230 HSLC

Madison, WI 53705

(608) 265-6688

wpp@hslc.wisc.edu

www.wphf.med.wisc.edu

