

Wisconsin Partnership Program

2007 Annual Report



education



research



community



health

Robert N. Golden, MD
Dean, School of Medicine and Public Health
Vice Chancellor for Medical Affairs
UW-Madison



University of Wisconsin
**SCHOOL OF MEDICINE
AND PUBLIC HEALTH**

Vision

***Wisconsin will become the
nation's healthiest state***

- Community-University Collaboration
“The Wisconsin Idea”
- Innovations in Education and Research
- Transformation to a School of Medicine
and Public Health bridging traditional
medicine with public health.



Wisconsin Partnership Program Organization and Funding Distribution

Wisconsin Partnership Program

38 new grants

\$11,448,782

Since Inception:

167 total grants

\$61,768,992

Oversight and Advisory Committee (OAC) Initiatives

21 new grants

\$5,282,303

Since Inception:

103 total grants

\$25,612,436

Medical Education and Research Committee (MERC) Initiatives

17 new grants

\$6,166,479

Since Inception:

64 total grants

\$36,156,556

UW SMPH Oversight and Advisory Committee (OAC)

Oversight and Advisory Committee (OAC) Initiatives

24 grants
\$6,382,303

Community-Academic Partnership Fund

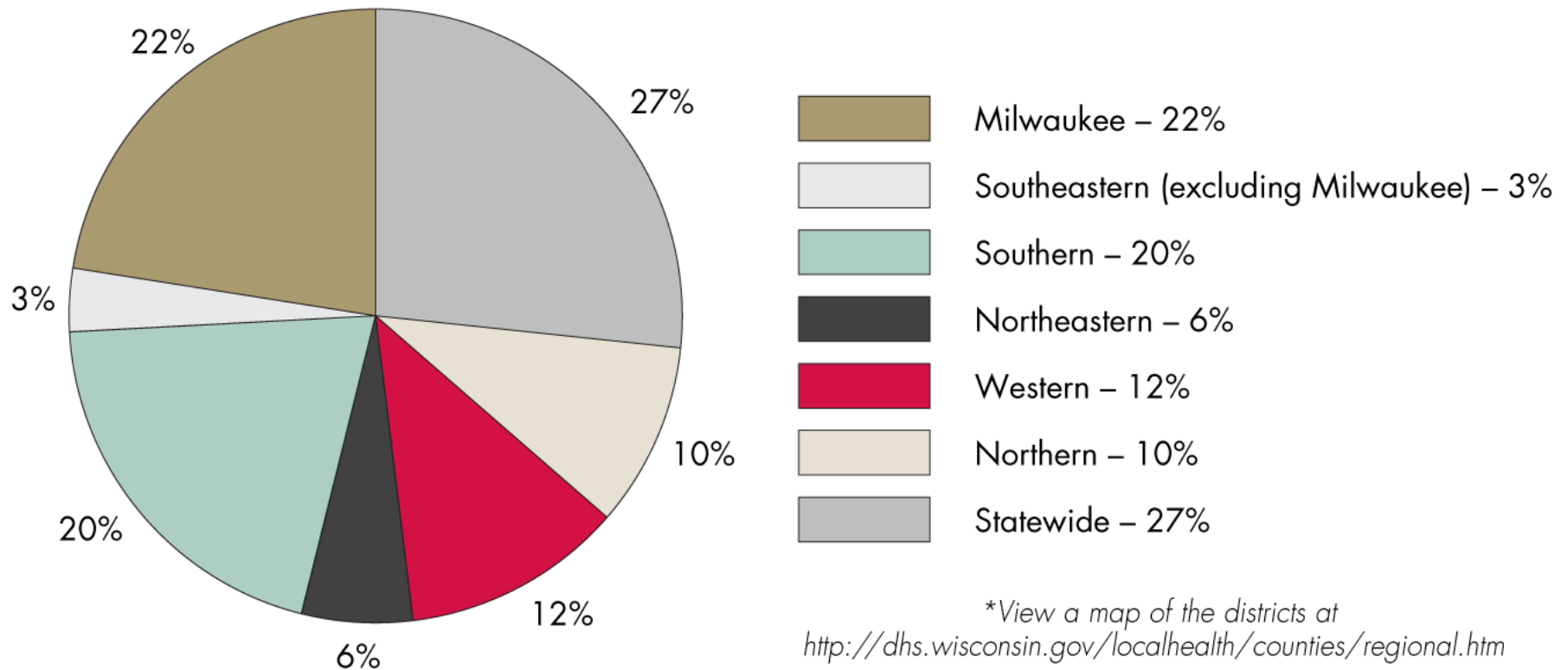
21 new grants
\$5,282,303

Public Health Education and Training Initiatives

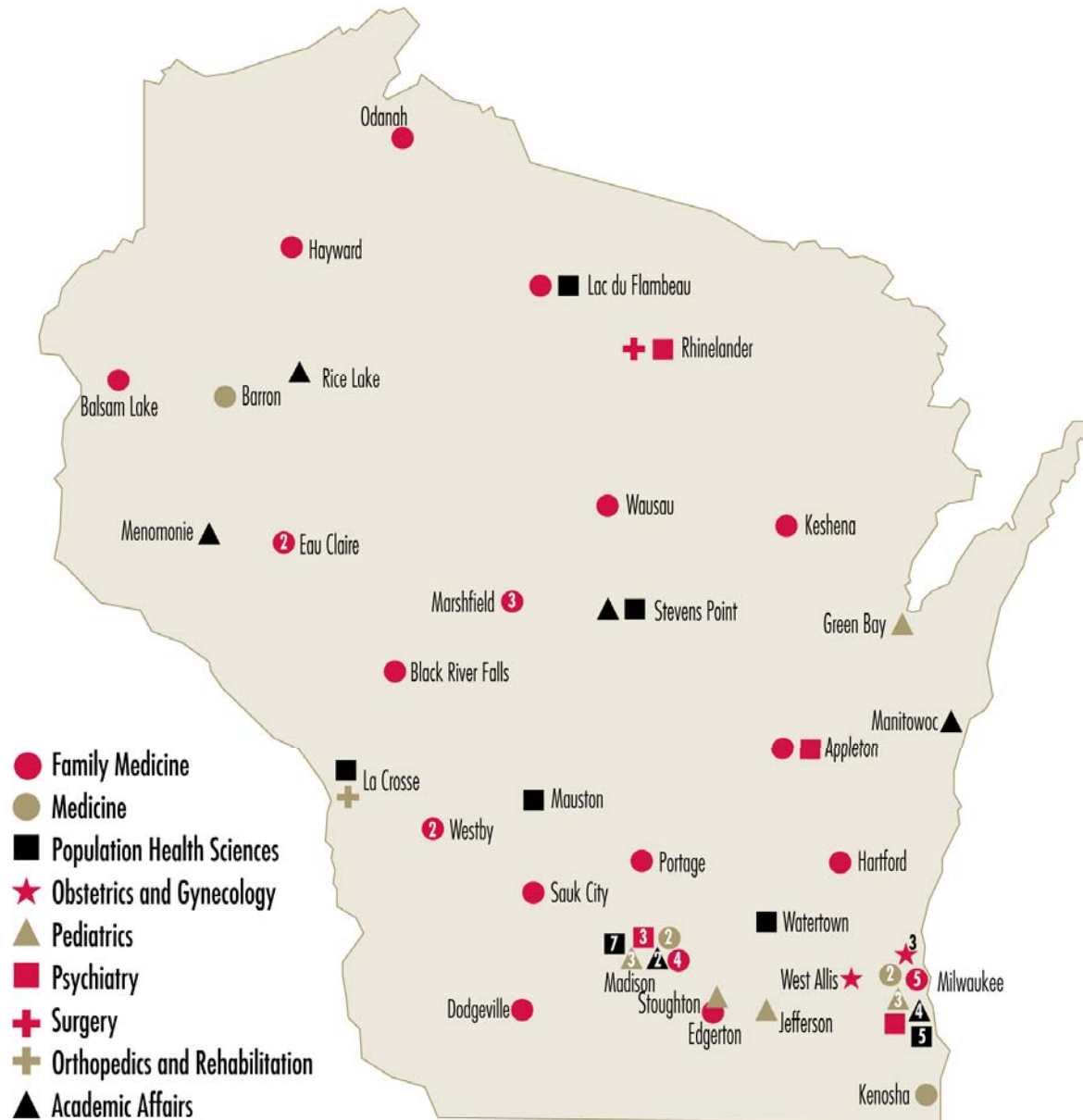
3 on-going grants
\$1,100,000

11 Development Grants
10 Implementation Grants

OAC Awards by State Public Health District



UW SMPH Academic Partnerships



OAC Awards by State Health Plan Priorities

Health Priorities	# of Grants	\$ Amount
Access to primary and preventive health services	20	\$3,587,076
Adequate and appropriate nutrition	2	\$109,318
Alcohol and other substance use and addiction	9	\$2,408,028
Environmental and occupational health hazards	4	\$525,000
High-risk sexual behavior	1	\$25,000
Intentional and unintentional injuries and violence	11	\$3,536,155
Mental health and mental disorders	7	\$1,130,559
Overweight, obesity, and lack of physical activity	17	\$3,394,832
Social and economic factors that influence health	7	\$2,298,345
Tobacco use and exposure	3	\$1,398,883
System (Infrastructure) Priorities		
Integrated electronic data and information systems	2	\$792,713
Community health improvement processes and plans	6	\$1,082,282
Coordination of state and local public health system partnerships	6	\$1,296,264
Sufficient, competent workforce	3	\$500,000
	98	\$22,084,455

Creating Healthy Rural Communities

PARTNERSHIP:

Juneau County Health Department

Barbara Duerst, RN, MS,
Population Health Sciences, UW SMPH

“We are a very small, rural, impoverished county. Yet when you consider the resources this grant provides – combined with the high level of enthusiasm and motivation of so many residents here to enact change – I believe we have the potential to significantly impact the health of our citizens.”



Barb Theis
Juneau County Health Department

Keeping Kids Alive in Wisconsin

PARTNERSHIP:

Children's Health Alliance of Wisconsin

Timothy Corden, MD,
Population Health Sciences, UW SMPH



Karen Ordinas

Children's Health Alliance of Wisconsin

“Regardless of where a child dies in the state, we should take steps to better understand how and why it occurred, and we should take action to prevent future deaths. This grant will expand efforts statewide to prevent nearly half of the 400 unexpected child deaths that occur in Wisconsin each year.”

Family Table Project

PARTNERSHIP:

West Central Wisconsin Community Action Agency, Inc.

Kirstin Siemering, DrPH, RD

Academic Affairs, Area Health Education Center, UW SMPH



Thomas Quinn
West Central Wisconsin
Community Action Agency, Inc.

“Our project brings low-income people together to prepare a week’s worth of nutritious meals. We’re working not only with our academic partners but with UW Extension agents, Head Start centers, churches, and farmers offering locally grown produce. Ultimately we will examine the impact on the families financially, nutritionally, and socially.”

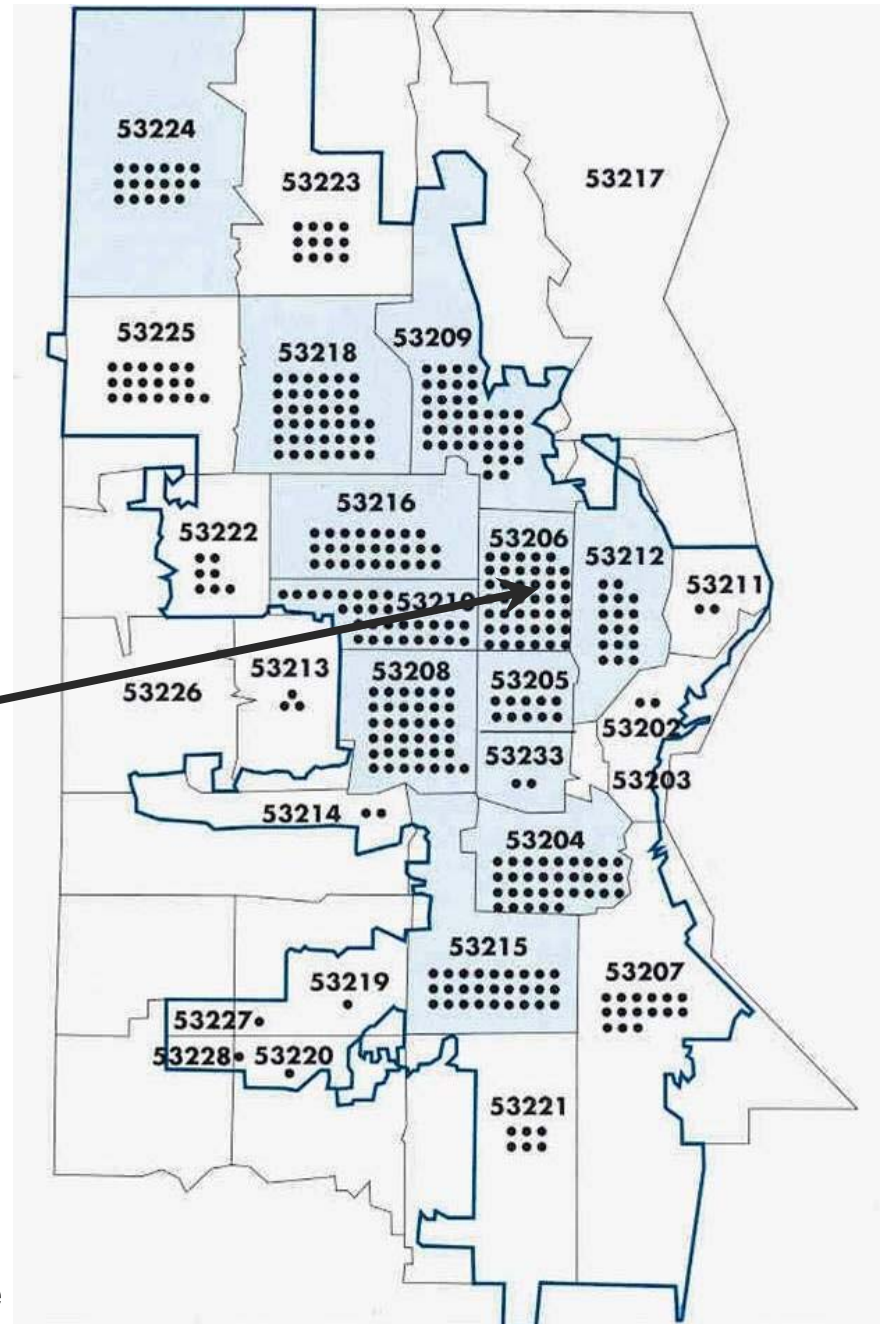
Targeted Funding Initiative



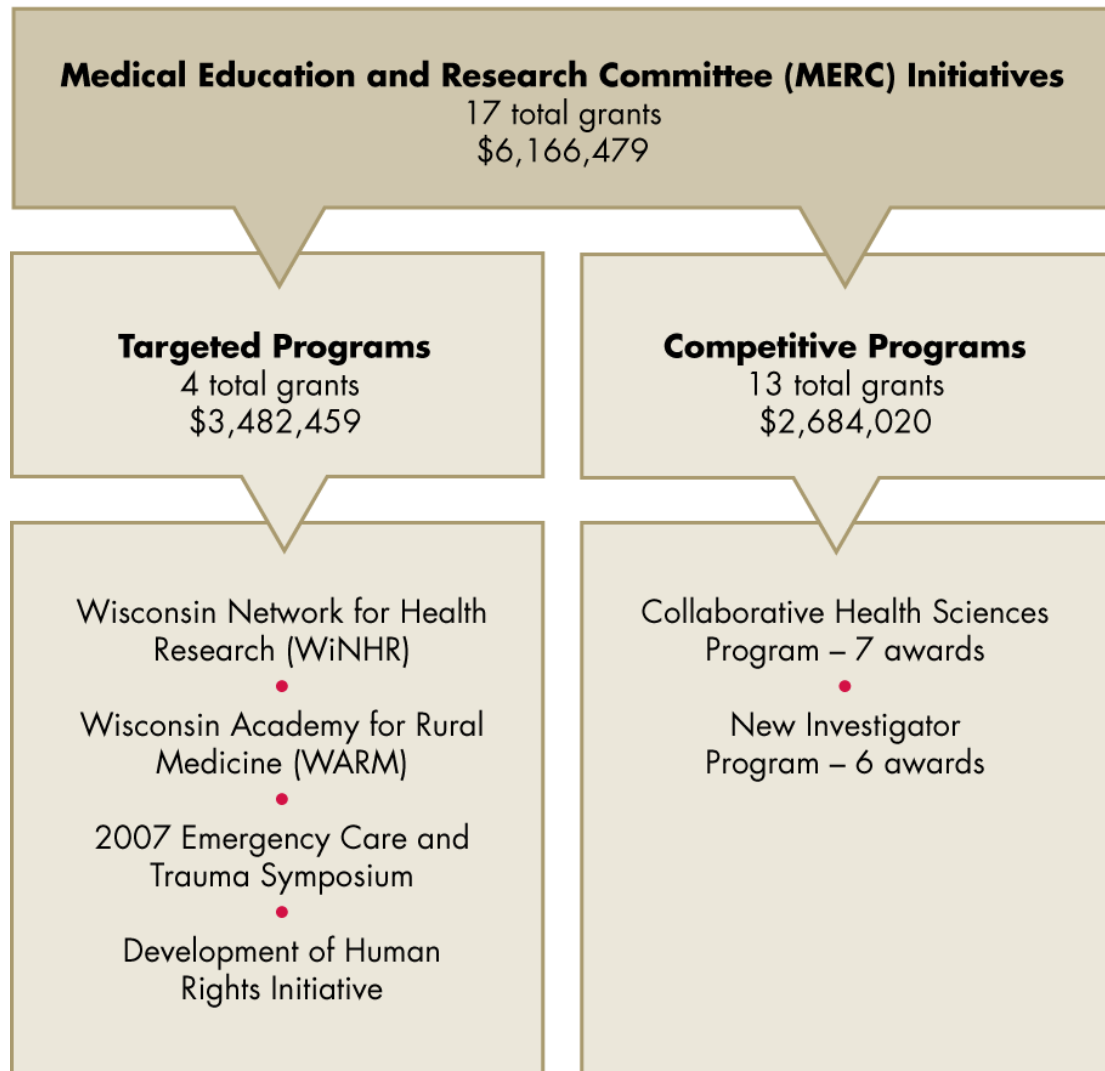
**Reducing Health
Disparities in
Birth Outcomes**

Map of Milwaukee Infant Deaths 2002-2004 (N = 389)

Zip Code **53206** had the greatest number of infant deaths = 41 and the highest infant mortality rate = 20.4



UW SMPH Medical Education and Research Committee



Medical Education and Research Themes

- Translating health research results into community practice
- Accelerating the transformation to an integrated school of medicine and public health
- Expanding partnerships within the University and with the state



Wisconsin Academy for Rural Medicine



“I grew up in a small town in Wisconsin and I know what it’s like to have to travel for health care. That’s why I want to be a rural doctor, to serve some of the state’s underserved population... I want to give back to the community and to Wisconsin – and my classmates in the WARM program share my passion for rural medicine.”

Carla Carlson, First-year student in the WARM program

New Investigator Program

Probiotics for Prevention of Infection by Multiresistant Bacteria

“Bacterial resistance to antibiotics is a widespread problem, both in Wisconsin and nationwide. We are attempting a novel treatment that uses probiotics (dietary supplements) to counter resistance. If our work is successful, it will offer a non-antibiotic-based method for preventing infections caused by drug-resistant bacteria.”



Nasia Safdar, MBBS,
Assistant Professor,
Medicine, UW SMPH

Collaborative Health Sciences Program

Vitamin D Inadequacy: Documentation in Rural Populations and Evaluation of Correction by Food Supplementation



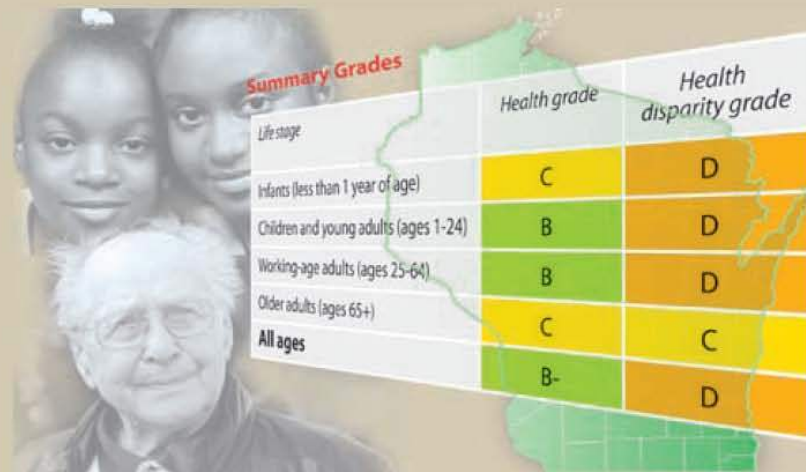
Neil Binkley, MD,
Associate Professor,
Medicine, UW SMPH

“Today vitamin D deficiency is a common worldwide problem causing adverse health consequences, particularly for those of us living at northern latitudes... My hope is that our research will make an important contribution by providing the Food and Nutrition Board essential data to re-evaluate its Vitamin D recommendations, which will in turn prompt industry to increase the amount of Vitamin D added to our food.”

Wisconsin Partnership Program Evaluation

- **Strategic**
 - Advancing the Public Health System
 - UW SMPH Transformation
 - Balanced Research and Education Portfolio
 - Community-Academic Partnership Model
 - Governance and Stewardship
- **Grant Processes**
- **Individual Grants**

Health of Wisconsin



REPORT CARD

July 2007

Five Year Plan 2009-2014

- **Solicit Feedback and Input (Jan – June, 2008)**
 - Stakeholder interviews
 - General comments web survey
 - Community forums
- **Draft Five-Year Plan (July – Oct 2008)**
- **Finalize and Secure Approval (Nov – Dec 2008)**
 - Review by Wisconsin United for Health Foundation, Inc.
 - Seek Board of Regents approval

