

Maximizing Access to a Sustainable Future

UW System Board of Regents

Chancellor David Wilson

April 10, 2008

Maximizing Access to a Sustainable Future



Teale Greylord
UW-Fond du Lac Student

Maximizing Access to a Sustainable Future



Philly Denís

**UW-Richland –
Former Student**

**UW-Madison –
Graduate Student,
Latin American Studies**

Maximizing Access to a Sustainable Future



Arlen Albrecht
**Professor – Community
Development**
**University of Wisconsin-
Extension**

Community Natural Resource and Economic Development – Rib Lake

- **Rib Lake Improvement**
- **Economic Development**
- **Housing Shortage**
- **Intergovernmental Cooperation**

Coalition Building in Rib Lake

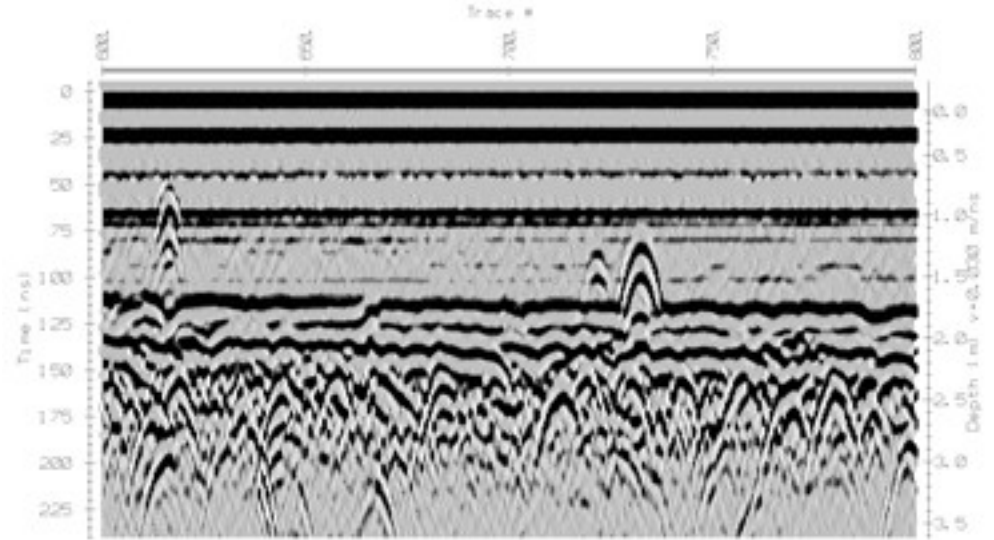
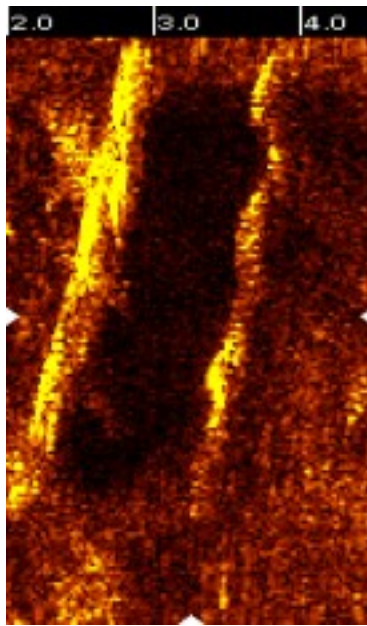
- Fish and Game Club
- Lake District
- School Science classes
- Tourism Committee
- Economic Development
- Native Americans
- Wisconsin Dept of
Natural Resources
- Citizens of Rib Lake



We work together to improve the quality of Rib Lake's water, fishery and aesthetic beauty and create sustainable economic opportunities.



Research meets local knowledge



UW-Madison Green House Study with Rib Lake Sediment

Prof. Richard Wolkowski



Economic Development

Expansion
Wetlands
Infrastructure
120 jobs!



Housing Shortage

Identify need
Identify location
Developer
Take Action
8 unit senior
2 new houses
6 lots to go
Tax base



Intergovernmental Cooperation

Ambulance

5 municipalities

Facilitated learning

Common ground

Agreement reached



Community Natural Resource and Economic Development – Rib Lake

Our work is not done – every year brings new community needs and issues where UW-Extension can play a role.

UW-Extension extends the knowledge and resources of the University Of Wisconsin to the people where they live and work.



Maximizing Access to a Sustainable Future



**Elizabeth L.R. Donley, JD,
MBA, MS**

**CEO, Stemina Biomarker
Discovery Inc.**



Maximizing Access to a Sustainable Future



Karl and Val Klessig
Saxon Homestead Farm

Saxon Homestead Farm LLC



Homesteaded in 1850; our farm is currently owned and operated by Karl and Liz Klessig, Robert and Kathleen Block-Klessig, Gerald and Elise Klessig-Heimerl and our families.

Saxon Homestead Farm LLC

Our farm consists of 450 Holstein-based, cross-bred cows, 400 young stock, 200 stocker steers.



Farming and Managing the Environment

Environmental Management of our Working Lands is an important part of our operation.

- **Liquid manure spill in Centerville Creek – 2002**
- **Nutrient Management Plan & Discovery Farm– 2004**
- **Comprehensive Nutrient Management Plan – 2005/2006**
- **Environmental Management System (EMS) – 2007**
- **Green Tier - 2008**



UW-Extension Discovery Farms

Why “Discovery Farms?”

- **Discovery Farms are working Wisconsin farms in different geographic areas, facing different environmental challenges.**
- **The Discovery Farms Program takes a real-world approach to finding the most economical solutions to the environmental expectations placed on farmers.**

Maximizing Access to a Sustainable Future



Maximizing Access to a Sustainable Future



**2007 Chancellor's Awards
Wisconsin Idea Award
Recipient**

**Walnut Way
Conservation
Corporation, Milwaukee**