



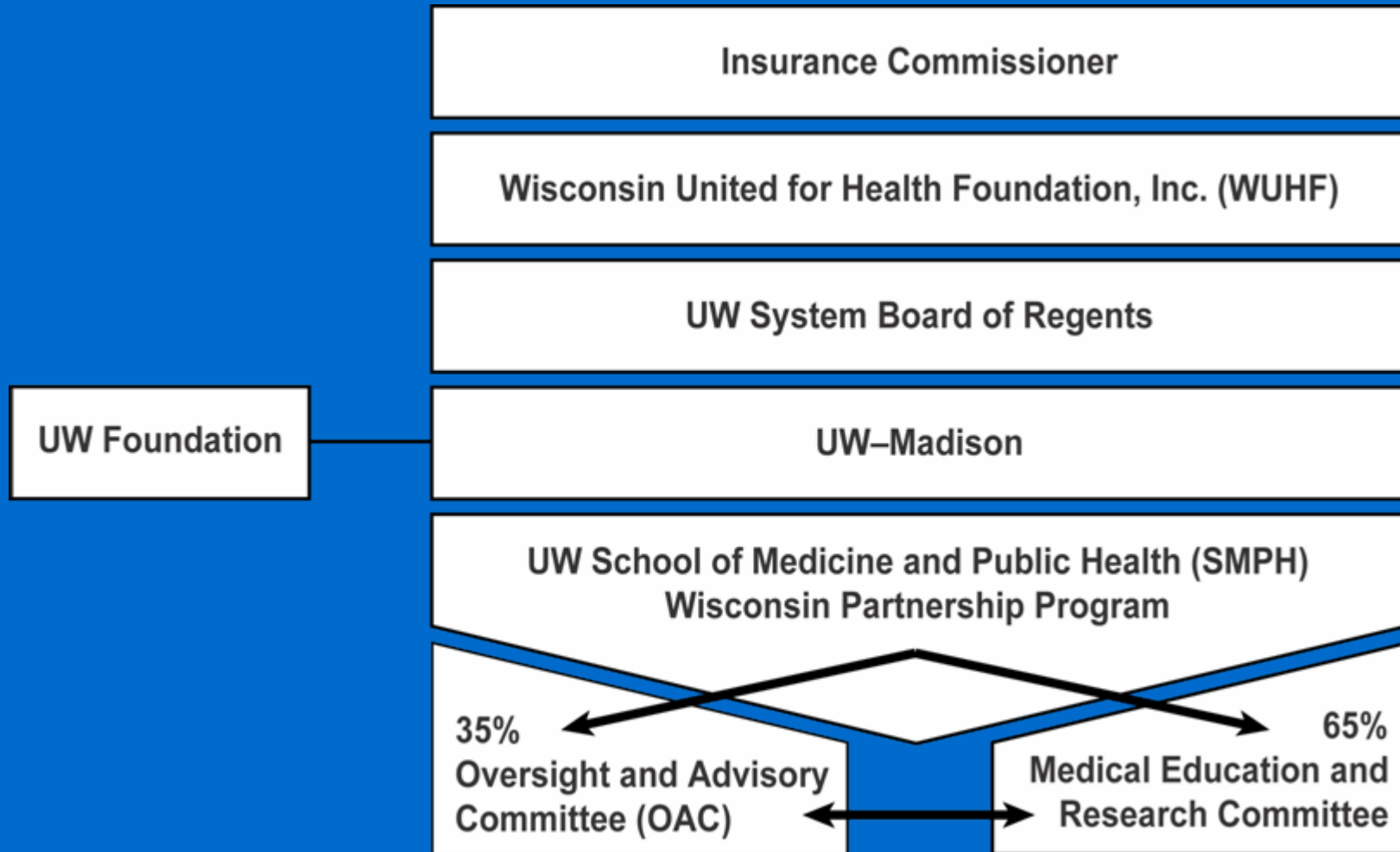
***2006 Annual Report
of the
Wisconsin
Partnership
Program***



University of Wisconsin
**SCHOOL OF MEDICINE
AND PUBLIC HEALTH**

***Robert N. Golden, M.D.
Dean, School of Medicine and Public Health
Vice Chancellor for Medical Affairs
UW-Madison***

Wisconsin Partnership Program Governance

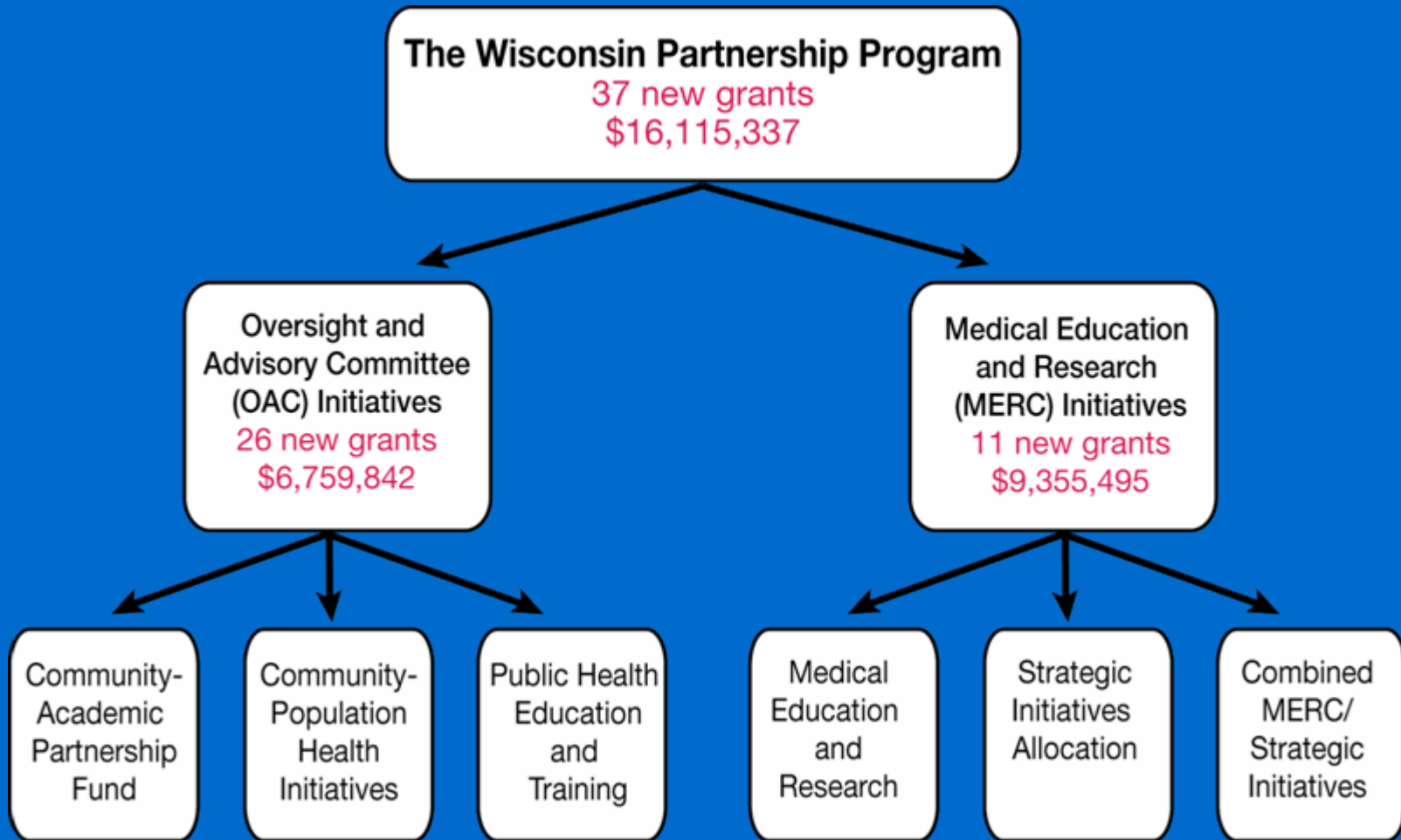


Advance Population Health

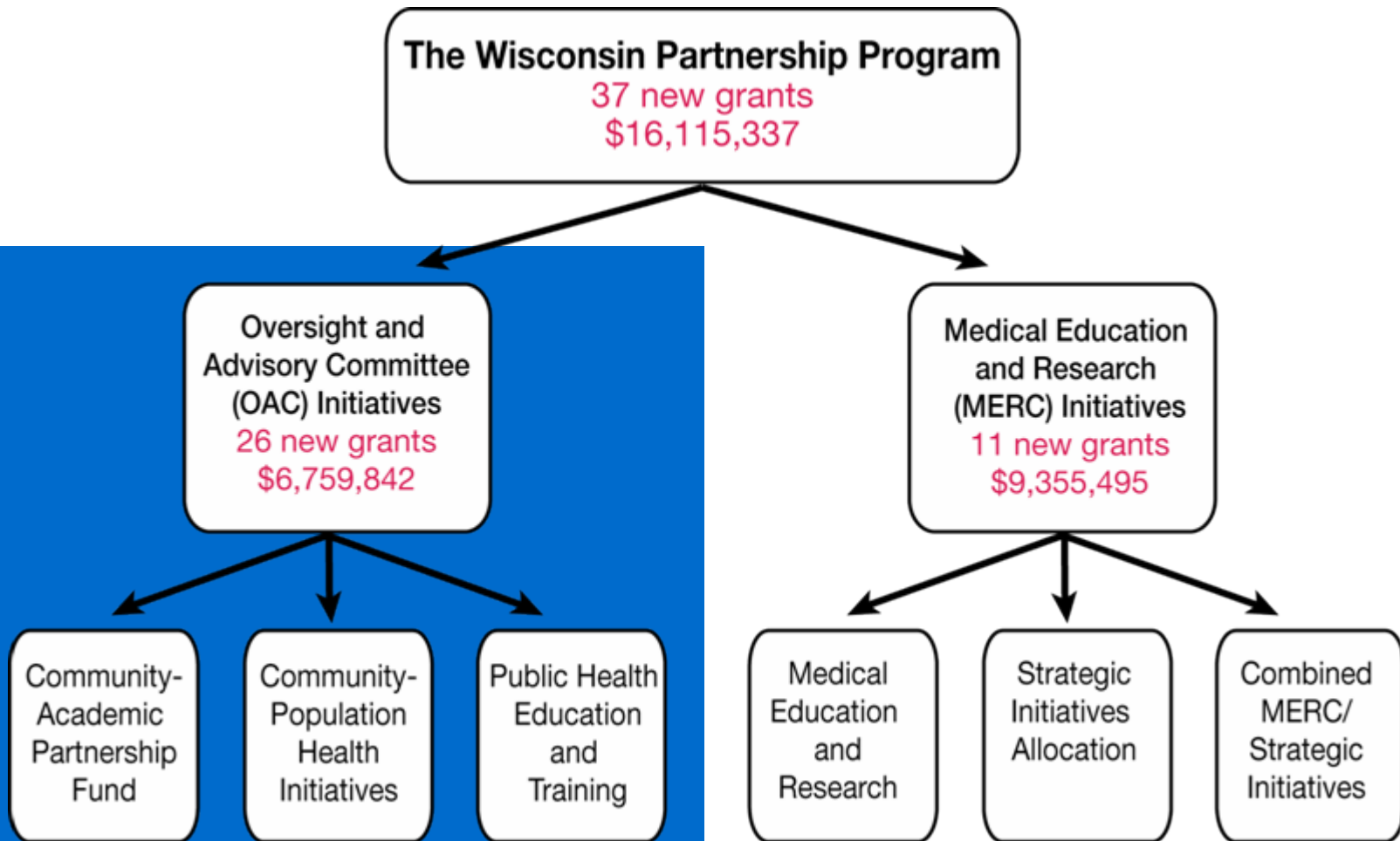
- **Community Collaboration
“The Wisconsin Idea”**
- **Education in Population Health**
- **Innovation in Research**
- **Transformation to a School of Medicine
and Public Health**



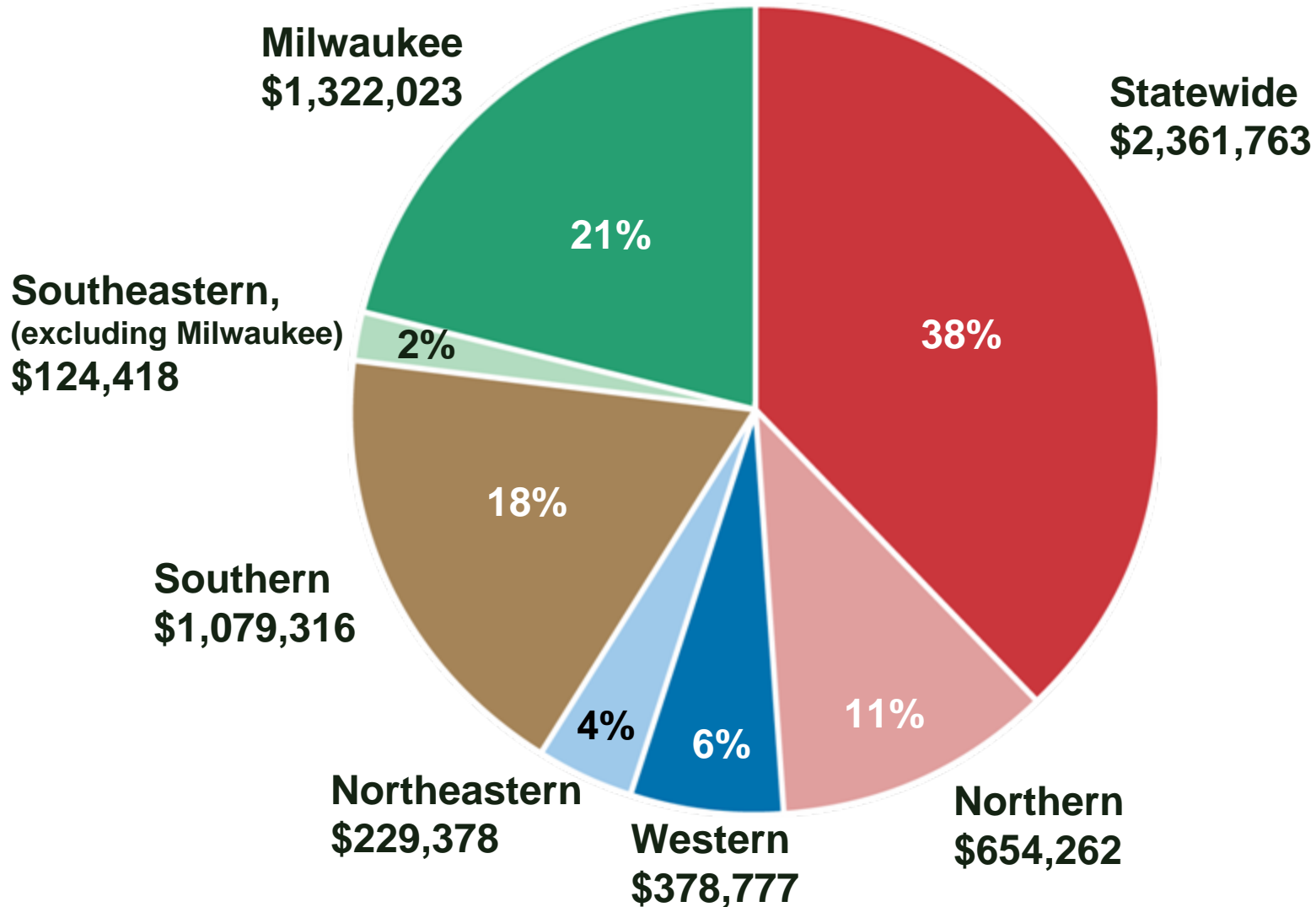
Wisconsin Partnership Program 2006 Overview



UW SMPH Oversight and Advisory Committee (OAC)



OAC Awards by State Public Health District



UW SMPH Faculty Partnerships



OAC Awards by State Health Plan Priorities

Healthiest Wisconsin 2010 Priority	\$ Amount	# of Grants
Access to primary and preventive health services	\$ 1,597,154	7
Adequate and appropriate nutrition	\$ 49,454	1
Alcohol and other substance use and addiction	\$ 498,760	2
Mental health and mental disorders	\$ 496,587	2
Overweight, obesity, and lack of physical activity	\$ 1,085,818	7
Social and economic factors that influence health	\$ 449,376	1
Coordination of state and local public health system partnerships	\$ 1,175,461	3
Integrated electronic data and information systems	\$ 396,894	1
Sufficient, competent workforce	\$ 1,010,338	2
Total Awards	\$6,759,842	26

Wisconsin Partnership for Childhood Fitness

PARTNERSHIP:

***Wisconsin
Department of Public
Instruction***

***Aaron Carrel MD,
Department of
Pediatrics***



Latino Geriatric Center

PARTNERSHIP:

***United Community
Center, Inc.***

***Mark Sager MD,
Departments of
Medicine and
Population Health
Sciences***

***Wisconsin
Alzheimer Institute***



Coordinating Partnerships to Improve Access to Public Health Coverage



PARTNERSHIPS:

***Covering Kids
and Families -
Wisconsin***

Wisconsin DHFS

***Roberta
Riportella PhD,
UW School of
Human
Ecology/UW
Extension***

***Susan Skochelak
MD, MPH,
UW SMPH
Department of
Family Medicine***



Noj Zoo, Nyob Zoo (Eat Well, Live Well) A Hmong Community Health Promoter Project

PARTNERSHIP:

***Hmong American
Women's
Association, Inc.***

***Kalyani Rai PhD,
University of
Wisconsin
Milwaukee***

UW SMPH

Continuing Public Health Education

PARTNERSHIP:

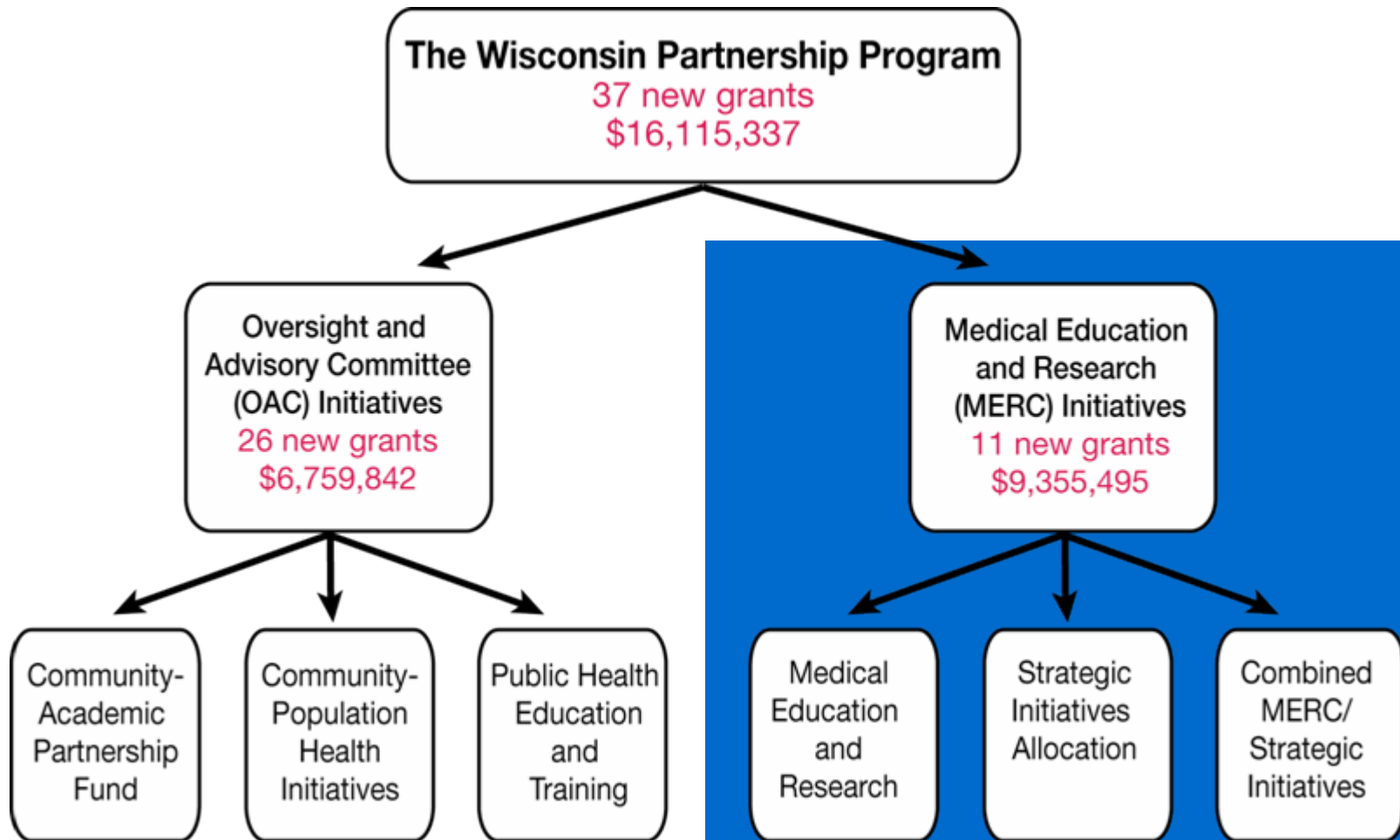
***George Mejicano MD, MS
UW SMPH Office of
Continuing Professional
Development***

***Healthy Wisconsin
Leadership Institute***

***Medical College of
Wisconsin***



UW SMPH Medical Education and Research Committee



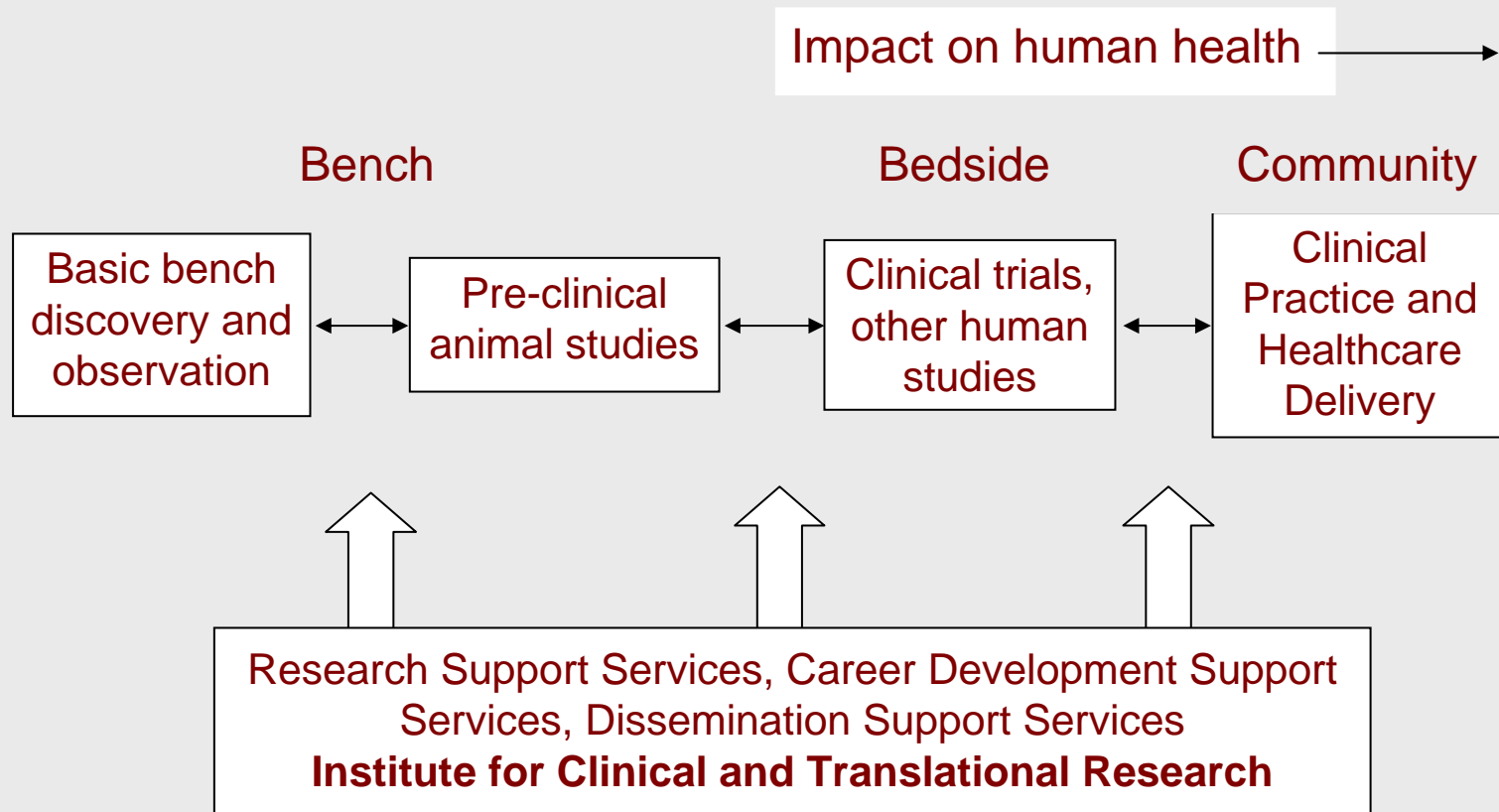
Medical Education and Research Themes

- **Translating health research results into community practice**
- **Accelerating the transformation process**
- **Strengthening partnerships within the University and with the state**



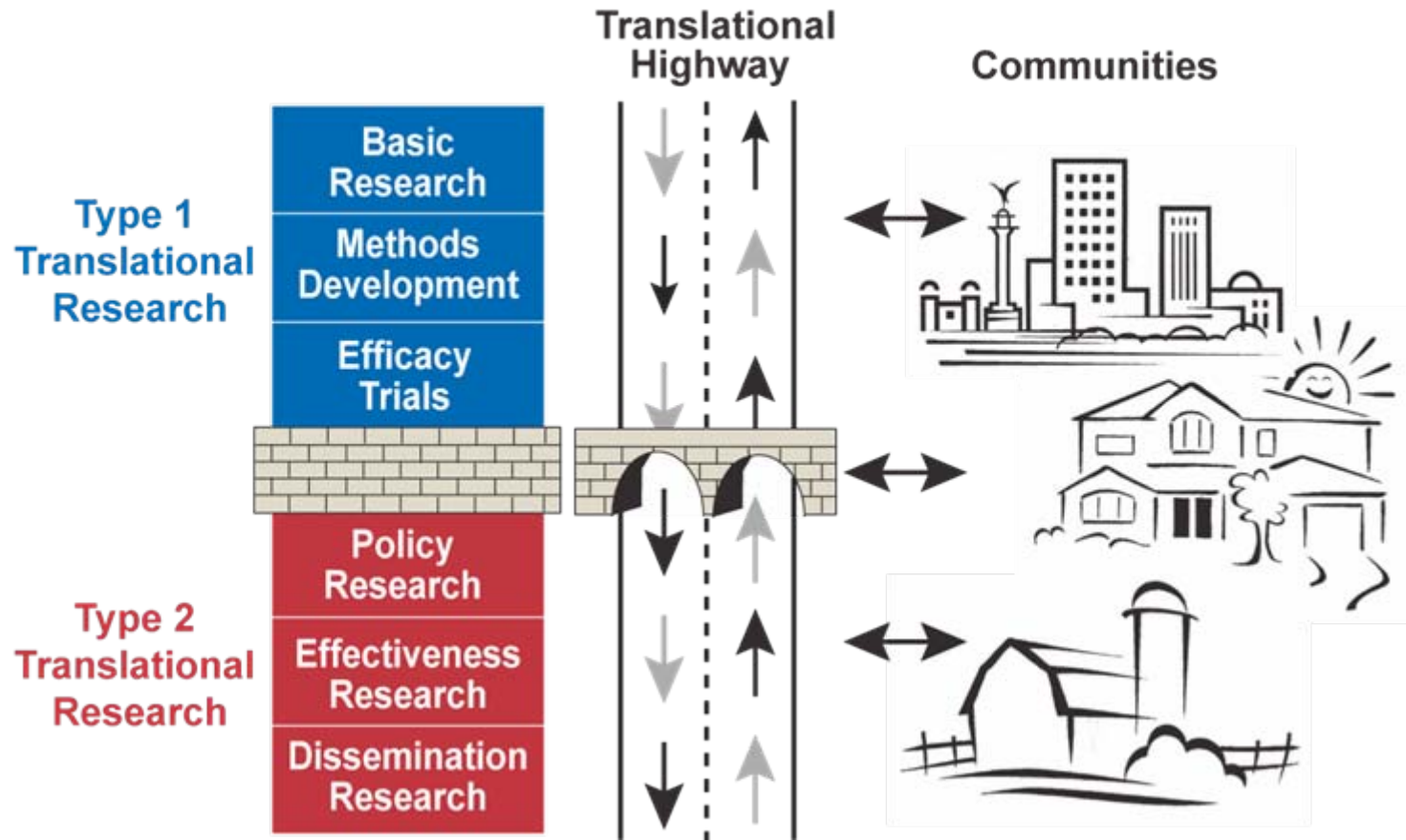
Institute for Clinical and Translational Research

The Clinical and Translational Research Continuum



Institute for Clinical and Translational Research

A Model of Two-Way Communication for Translational Research



Advancing Evidence-Based Health Policy in Wisconsin: Translating Research into Practice



PARTNERSHIP:

***UW-Madison
Chancellor's Office***

***UW Population
Health Institute***

***La Follette School
of Public Affairs***

***Wisconsin
Legislative Council***

New Investigator Program



***Determinants of Antibiotic Resistance in
Nursing Homes***

Center for Urban Population Health Development Plan



- Recruit public health faculty at UW-M and Aurora
- Provide public health research support
- Facilitate learning and mentoring opportunities
- Foster community collaborations





**Wisconsin
Partnership
Program
Awards
2004-06:**

**\$50 million
129 Grants**



University of Wisconsin
**SCHOOL OF MEDICINE
AND PUBLIC HEALTH**

Looking Ahead: 2007 and Beyond

- **Targeted Initiative – Reducing Health Disparities in Birth Outcomes**
- **Collaborations between OAC and MERC**
- **Comprehensive Evaluation of the Wisconsin Partnership Program**
- **Vision for Transformation of the School**
- **Preparing for next Five Year Plan**

