



# Distance Learning

## UW-Platteville's Niche



Building on Tradition



# Distance Learning Initiatives

- Time and place bound adults
- Entire degree programs
- No campus residency requirement
- Multiple modalities
  - Online degree programs
  - Site-based programs
  - Collaborative programs



Building on Tradition

Dawn Drake  
Executive Director  
Alternative Delivery Systems



Michael Anderson  
Director  
School of Education



Richard Shultz  
Dean of Engineering,  
Mathematics, & Science





# Distance Education Past, Present & Future

Dawn Drake, Executive Director  
Alternative Delivery Systems



Building on Tradition

# History



- Print-based program

1978



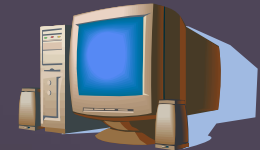
- Interactive Television

1991



- Online

1999



Building on Tradition



# Programs

- Undergraduate
  - Business
  - Criminal Justice
- Graduate
  - Criminal Justice
  - Engineering
  - Project Management



Building on Tradition



# Enrollments (2005-2006)

- Over 2,800 degree-seeking enrollments
  - 1700 Online
  - 600 Print-based
  - 500 Interactive Television



Building on Tradition



# Demographics

- Average Age
  - Undergraduate - 40; Graduate - 38
- Gender
  - Men, 51%; Women, 49%
- 7% minority
- 5% Veterans or active military
- 2% international



Building on Tradition



# Demographics

- Students in 70 of 72 Wisconsin counties
- Students in 47 states; 12 countries
- Graduates of Programs
  - Business – 395
  - Criminal Justice – 52
  - Engineering – 46
  - Project Management – 94

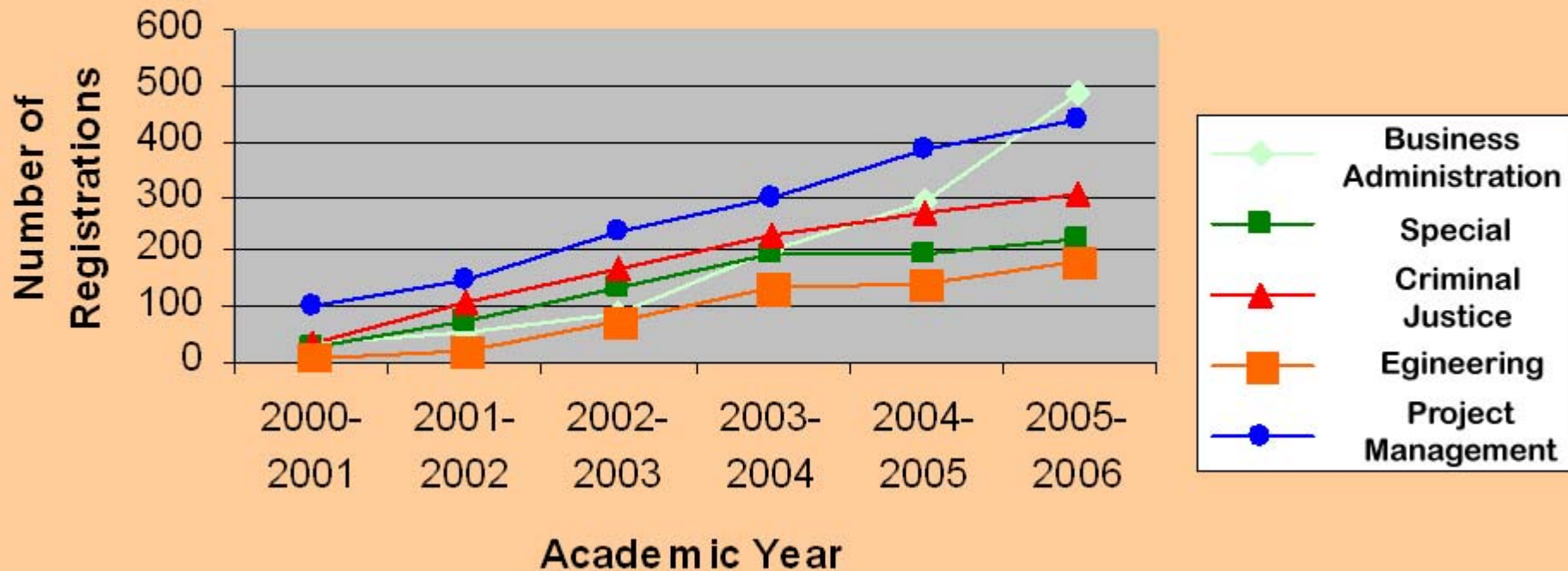


Building on Tradition

# Growth Pattern - Online



**All Registrations**



# Employers



JOHN DEERE

LANDS' END

 Kimberly-Clark

JOHNSON  
CONTROLS



Building on Tradition



# Employers

- Federal, state & municipal government
  - Small business
  - Law enforcement agencies
  - Educational institutions
- Over 500 Wisconsin companies have employees enrolled in distance courses



Building on Tradition



# Self-Supporting Entity

- Instructional support
- Course development and revisions
- Administrative personnel
- Office operations including supplies and equipment
- Marketing and recruitment



Building on Tradition

# Partnerships



Building on Tradition



# All-Inclusive Service

- Open House
- Recruitment
- Admissions
- Financial Aid
- Orientation
- Peer Mentoring
- Tutoring
- Advising
- Student Advisory Board
- Career Services
- Graduation
- Alumni



Building on Tradition

# Awards

GetEducated.com

2005-2007 Best Buy Awards

- Consumer Seal of Approval
- Top 25 of Online Engineering Degrees
  - Master of Science in Engineering
- Honorable Mention of Undergraduate Degrees
  - Bachelor of Science in Business

Administration



Building on Tradition

# Awards



- US News and World Report
  - Best Online Graduate Programs
    - Master of Science in Engineering and Master of Project Management



- A G&H Education Site Award
- Project Management Institute Global Registered Education Provider



Building on Tradition



# Future

- Continued growth of all online programs over the next 5 years
- Updates to course delivery with new technologies
- Additional student services



Building on Tradition

# Graduates



Vic Baez, WI  
Engineering



Lakshmi  
Balasubarmanian, NJ  
Project Management



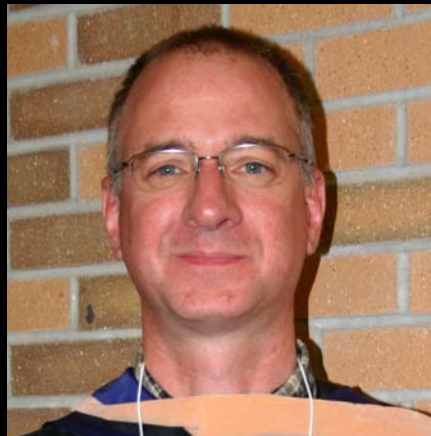
Colleen Armstrong  
Project Management



Leigh Parker, IA  
Project  
Management



Brian Swope, IL  
Project  
Management



Dan Kilker, MN  
Project  
Management



Gary Apperson, AK  
Criminal Justice



Carl Ross, WI  
Project  
Management



# MSE – Adult Education Past, Present & Future

Michael Anderson, Director  
School of Education



Building on Tradition



# **Master of Science in Education—Adult Education Distance Program**

Offered in Milwaukee, Racine, Madison, Janesville  
In partnership with: MATC Milwaukee & MATC Madison  
Gateway Tech, Blackhawk Tech, UW-Colleges

# Program Staff



**Troy Cobb, MSE**  
Recruitment and  
Retention Specialist  
Racine Area



**Patricia Bromley, PhD**  
Coordinator/Advisor



**Carlos Aranda, MSE**  
Recruitment and  
Retention Specialist  
Milwaukee Area



Building on Tradition

# Program design

- Weekend format
- Interactive television and in person delivery



# Program participants

- ratio of 3:1 women to men
- ~ 50% minority, overall

(NOTE: ~ 2/3 of Milwaukee/Racine participants are minorities)

Building on Tradition



# Degree options

- Human Services – for psychotherapy or AODA certification
- Vocational/Technical – for technical college faculty
- Individualized – based on student goals



Buildi

# Future...



September 2006

Collaborative agreement  
To establish  
***PAACE***

partners  
UW-Rock County/UW-Colleges  
UW-Platteville  
Blackhawk Technical College



# Building on Tradition

# Collaborative Undergraduate Engineering Programs



UW-Platteville/UW-Fox Valley

UW-Platteville/UW-Rock County

Richard Shultz, Dean

College of Engineering, Mathematics, &  
Science

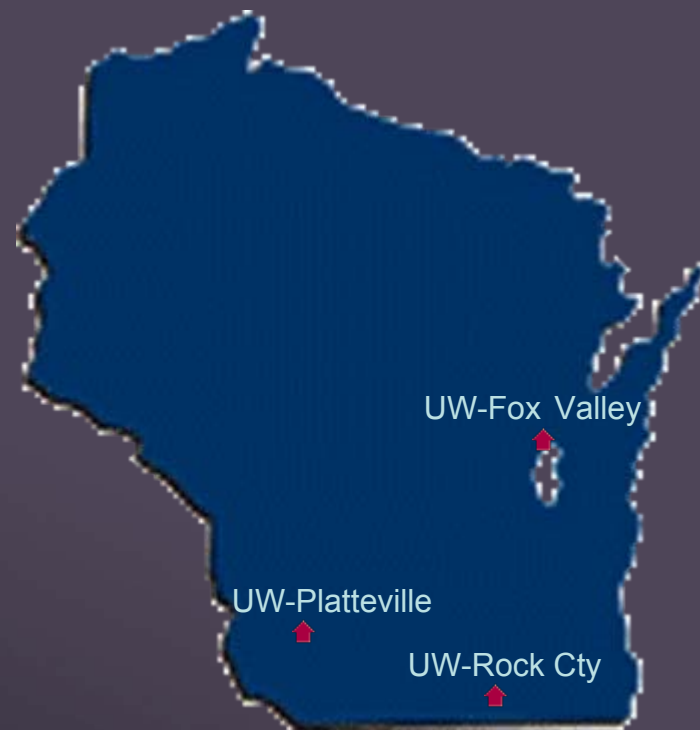


Building on Tradition

# Program History



- 1999 – UW-Platteville and UW-Fox Valley received a request from industry.
- 2001 – UW-Platteville and UW-Rock County received a similar request from Forward Janesville.



Building on Tradition

# Program development



Contributions from area companies totaling \$400,000 built a new laboratory facility on the UW-Fox Valley campus and classes started in 2001.



 **Kimberly-Clark**

**APPLETON**  
What Ideas Can Do™

**PLEXUS**  
More Product. Smarter Company.

 **Wisconsin Energy Corporation**

**BANTA CORPORATION**  
SINGLE SOURCE.  
MULTIPLE SOLUTIONS.

Building on Tradition



# Program design

- UW-Fox Valley delivers non-engineering coursework.
- On site UW-Platteville engineering faculty deliver the engineering courses.
- First graduates –  
December, 2005  
mechanical engineering



Building on tradition

# Program expansion

- First electrical engineering courses offered this fall at UW-Rock County, Janesville.
- Pledges from area companies total over \$600,000 to build a laboratory facility on the UW-Rock County campus.
- Electrical engineering courses also offered at UW-Fox Valley, utilizing faculty on site and streaming video.



Building on Tradition



# Program success

- At present over 170 students are being served by the collaborative engineering programs with an average growth of 9% annually.
- Enrollment is expected to reach 400 students as the new programs at both locations mature.
- 62% of all students served are non-traditional, with an average age of 31.



Building on Tradition

# Future...



- UW-Platteville continues to receive inquiries from around the state.
- There is student and industry demand, but often not clustered in sufficient numbers to justify the full model program.



Building on Tradition



# Future... 'new' model

- Development of streaming video lectures to deliver existing programs.
- Engineering could be delivered to any region of the state, with appropriate support structures.
- Proposal submitted by UW-Platteville to provide that capability for the state, in partnership with the UW-Colleges.



Building on Tradition



# Future...

## Collaborative Engineering and Technology Programs

- Proposal: UW-Stout and UW-Platteville partnership
  - to service the needs of place bound students outside the metropolitan areas, in collaboration with UW-Colleges
- Advantage for Wisconsin
  - proposed partnership will make established engineering and technology programs available to a dispersed population in a very cost effective manner.



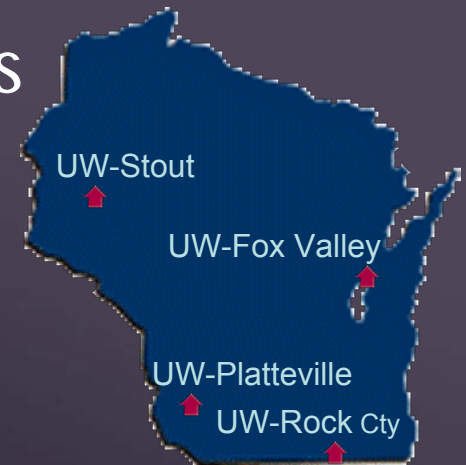
Building on Tradition

# Future...



## Why UW-Stout and UW-Platteville?

- Successful history in distance education
- Large array of engineering and technology degree offerings
- History of working with UW-Colleges
- Availability of fixed and mobile laboratory facilities



# Building on Tradition



# Thank you

Questions?



Building on Tradition