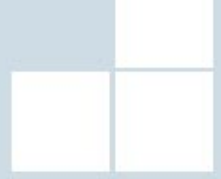
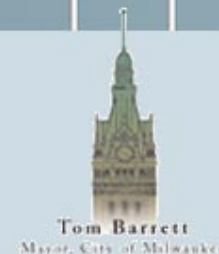


December 2006



Planning for an Accredited School of Public Health at UW-Milwaukee





Rita Cheng, PhD

Provost and Vice Chancellor, UWM

Chair, Steering Committee

Bevan Baker, CHE

Commissioner of Health, City of Milwaukee

Co-Chair, Planning Team

Randall Lambrecht, PhD

Dean, College of Health Sciences, UWM

Co-Chair, Planning Team

Importance of Public Health

Leading Causes of Death in the United States, 2000

IMMEDIATE causes of death	ACTUAL causes of death
1. Heart disease 711,000	1. Tobacco 435,000
2. Cancer 553,000	2. Diet/activity patterns 365,000
3. Stroke 168,000	3. Alcohol 85,000
4. Chronic lung disease 122,000	4. Microbial agents 75,000
5. Accidents 98,000	5. Toxic agents 55,000

SOURCE: Mokdad, A.H., Marks, J.S.; Stroup, D.F., and Gerberding, J.L. "Actual Causes of Death in the United States, 2000." *Journal of the American Medical Association*, 291 (2004): 1238-1245.

Charge to Committee

Conduct feasibility study for school of public health (SPH) in Milwaukee with these goals:

- Identify public health needs & academic resources
- Determination of gaps in resource base
- Convergence on the best means for filling those gaps

Process

- Identification of community stakeholders
- Launch of www.publichealth.uwm.edu
- Survey of UWM faculty and staff
- Two Community Input Sessions, attended by 100 community stakeholders

Public Health Experts

Site Visit and Report

- Patricia Wahl, PhD
Dean, School of Public Health and Community Medicine
University of Washington
- Hugh Tilson, MD, DrPH
Senior Advisor to the Dean, School of Public Health
University of North Carolina at Chapel Hill
- Sylvia Furner, PhD, MPH
Interim Dean, School of Public Health
University of Illinois--Chicago

Experts' Report

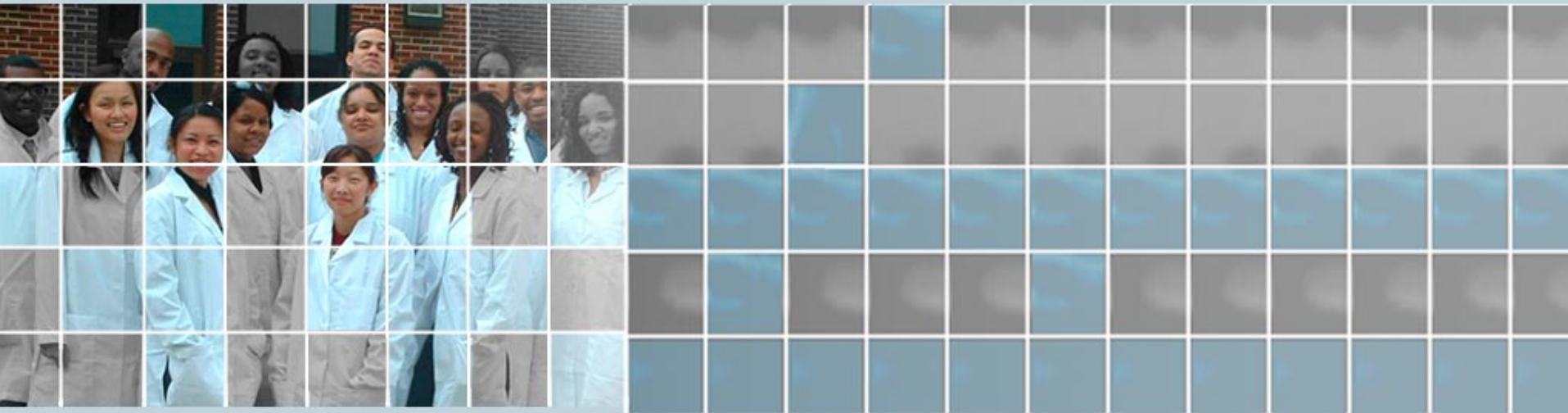
Diversity in Milwaukee's PH workforce "is particularly important."

"There is an obvious commitment to service and community engagement at UWM."

"Approximately \$10 million in ongoing core support needed..."

"...our commendation that [UWM recognizes] the importance of PH to your community."

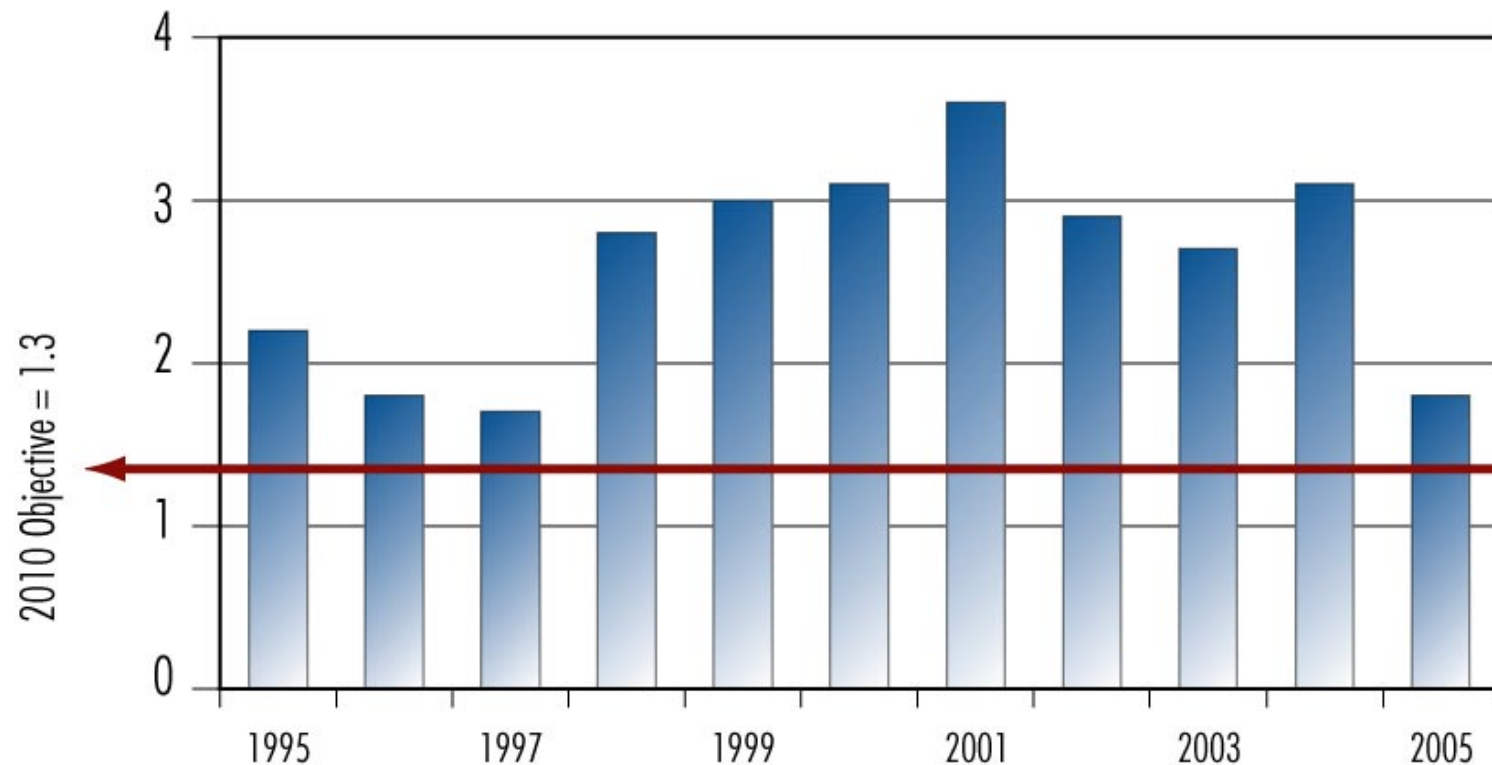
Need for School of Public Health in Milwaukee



Milwaukee Public Health Indicators

Infant Mortality Racial Disparity

Ratio of Infant Deaths Rates in African-Americans, Compared to Whites



Milwaukee Public Health Indicators

Immunization Levels, 2-year-olds

WISCONSIN
81%

MILWAUKEE COUNTY
79%

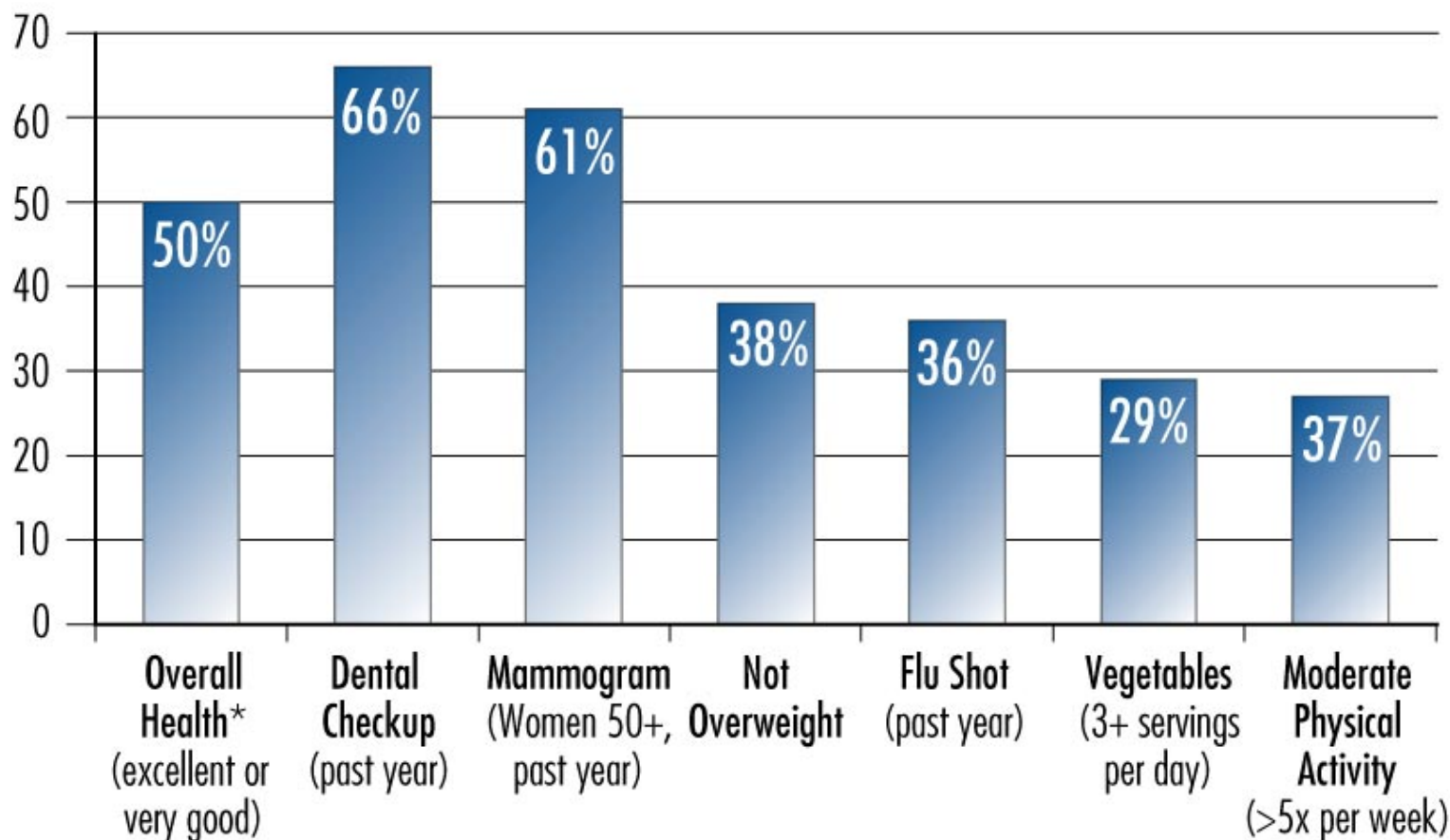
MILWAUKEE CITY
41%

Combined completion rates of the recommended

- 4 doses of Diphtheria/Tetanus/Pertussis (DTP)
- 3 doses of Polio vaccine
- 1 dose of measles-containing vaccine (MMR)
- 3 doses of haemophilus b vaccine (Hib)
- 3 doses of hepatitis b vaccine

Milwaukee Public Health Indicators

Adult Health, 2003



*Self-reported health status

Workforce Needs

In Wisconsin and US:

- The public health workforce is facing precipitous declines at local, state and national levels
- More than 50% of PH workforce is aged over 50
- PH workforce declined 28% over past 2 decades

In Milwaukee:

- 37 of 207 PH workers are retirement eligible, 15 of them minorities
- These management-level positions require advanced degrees

Accreditation & Academic Resources



Accreditation Requirements

Minimum Core Requirements

Administrative infrastructure (Dean, Associate Dean)

A Master's of Public Health program

A minimum of 3 doctoral programs

A minimum of 25 FTE faculty

Depth of education/training in 5 core areas
(Epidemiology, biostatistics, environmental health, health services administration,
behavioral and social sciences)

Sufficient Resources

Credit: Council on Education for Public Health

Sampling of UWM Engagement with the Community

UWM CENTERS

- Center for Urban Population Health
- Center for Age & Community
- Center for Addiction and Behavioral Health Research
- Center for Urban Initiatives and Research
- Center for Rehabilitation Research and Disability Design

UWM INSTITUTES

- National Institute of Environmental Health Sciences (NIEHS)
- Institute of Environmental Health
- Institute of Urban Health Partnerships
- WATER Institute

COMMUNITY-BASED CLINICS

- Community Audiology Services
- Community Nursing Centers
- Augmentative and Alternative Communication Clinic
- “Wellness Works” Older Adult Fitness Clinics

COLLABORATIVE PROGRAMS

- Native American Research Center for Health (NARCH)
- Partnerships for Healthy Milwaukee
- Academic Programs
 - PhD Public & Community Health
 - Public Health Microbiology
 - Community Health Nursing

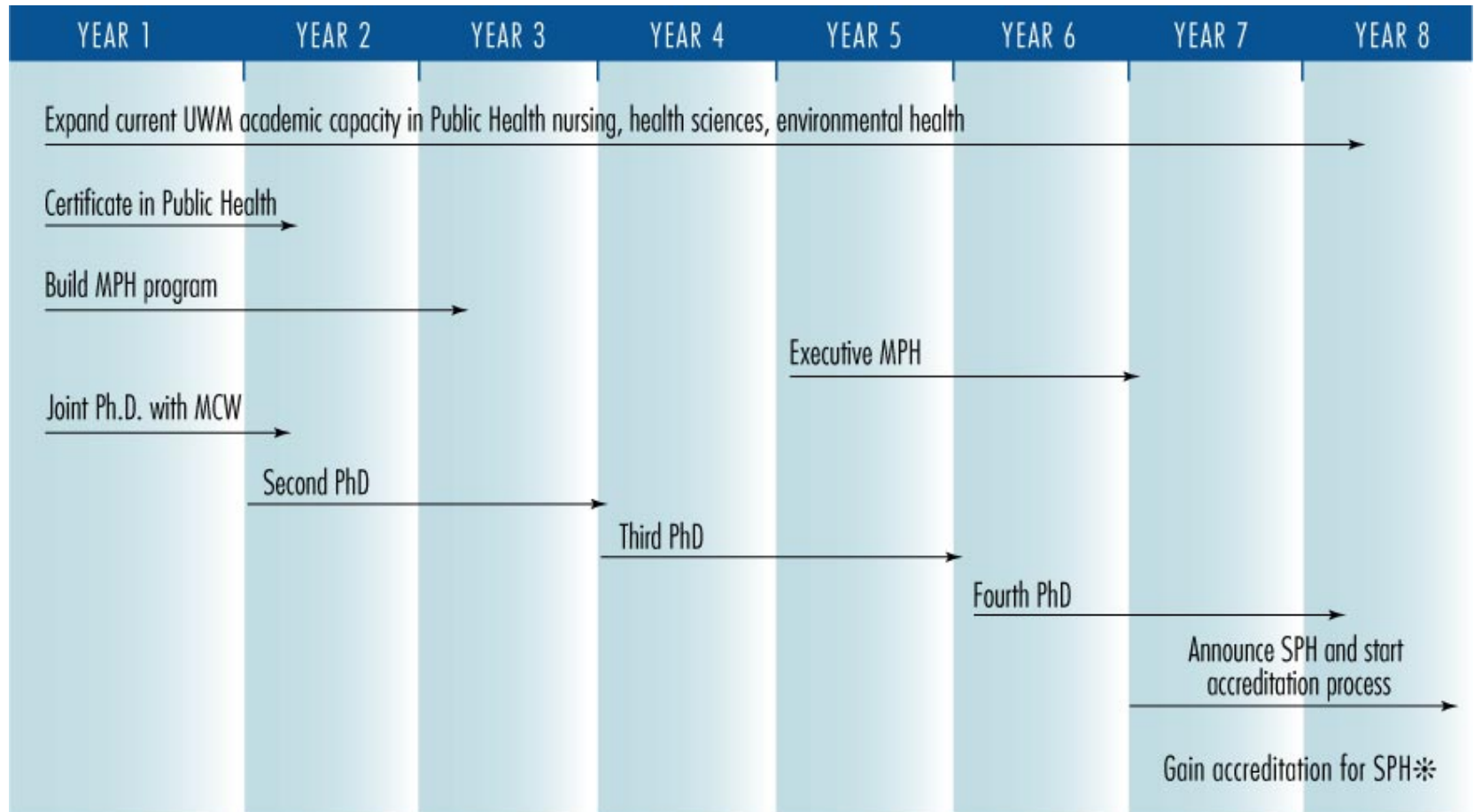
Outcomes of an Accredited SPH

- A highly qualified, diversified workforce
- Research that examines root causes of PH problems
- Strategies that improve overall health outcomes
- Policies that protect the health of the public
- Partnerships

Academic Health Department

- A dynamic academic-practice collaboration
- Senior health department professional staff provide experience-based knowledge.
- Faculty researchers provide high-quality academic data that informs health department policies and translates into better programs.

Timeline



* Accreditation must occur within two years of application for accreditation.

New Resources are Paramount

- New faculty
- New research and teaching facilities
- New partnerships
- Annually, a midsize SPH requires:
 - \$10 million in unrestricted funds
 - plus \$16 million in grants/contracts

A Commitment to Wisconsin and Its Largest Urban Corridor



Summary of Findings

- Milwaukee County ranks second last of WI counties in health determinants
- Wisconsin public health workforce in critical situation
- 36 accredited schools in US; none in WI
- Community stakeholders express significant interest in SPH in Milwaukee
- Significant new resources are required

Next Steps

- Request for Regent endorsement
- Create SPH Planning Council
- Implement recommendations in report

“The SPH might take time—what can we do right now?”

-Community member at a Stakeholder Input Session

Discussion and Questions

