

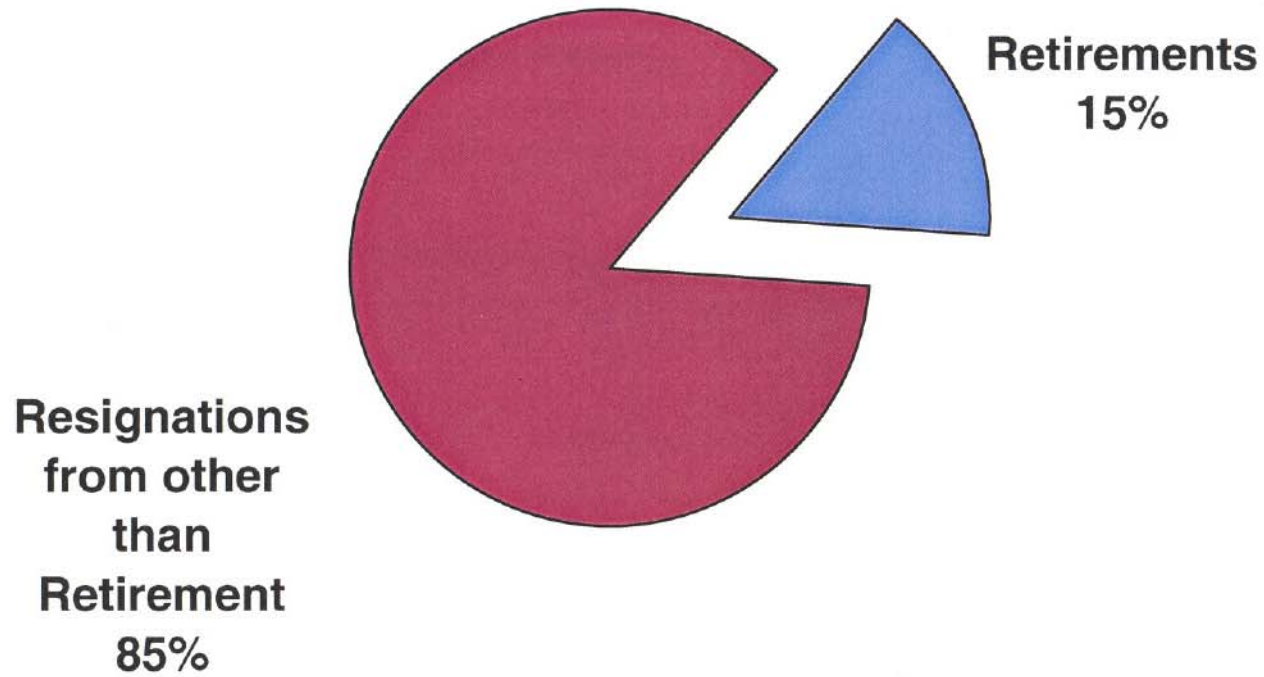
# Faculty, Staff and Academic Leaders' Salary Review

Board of Regents

Business and Finance Committee

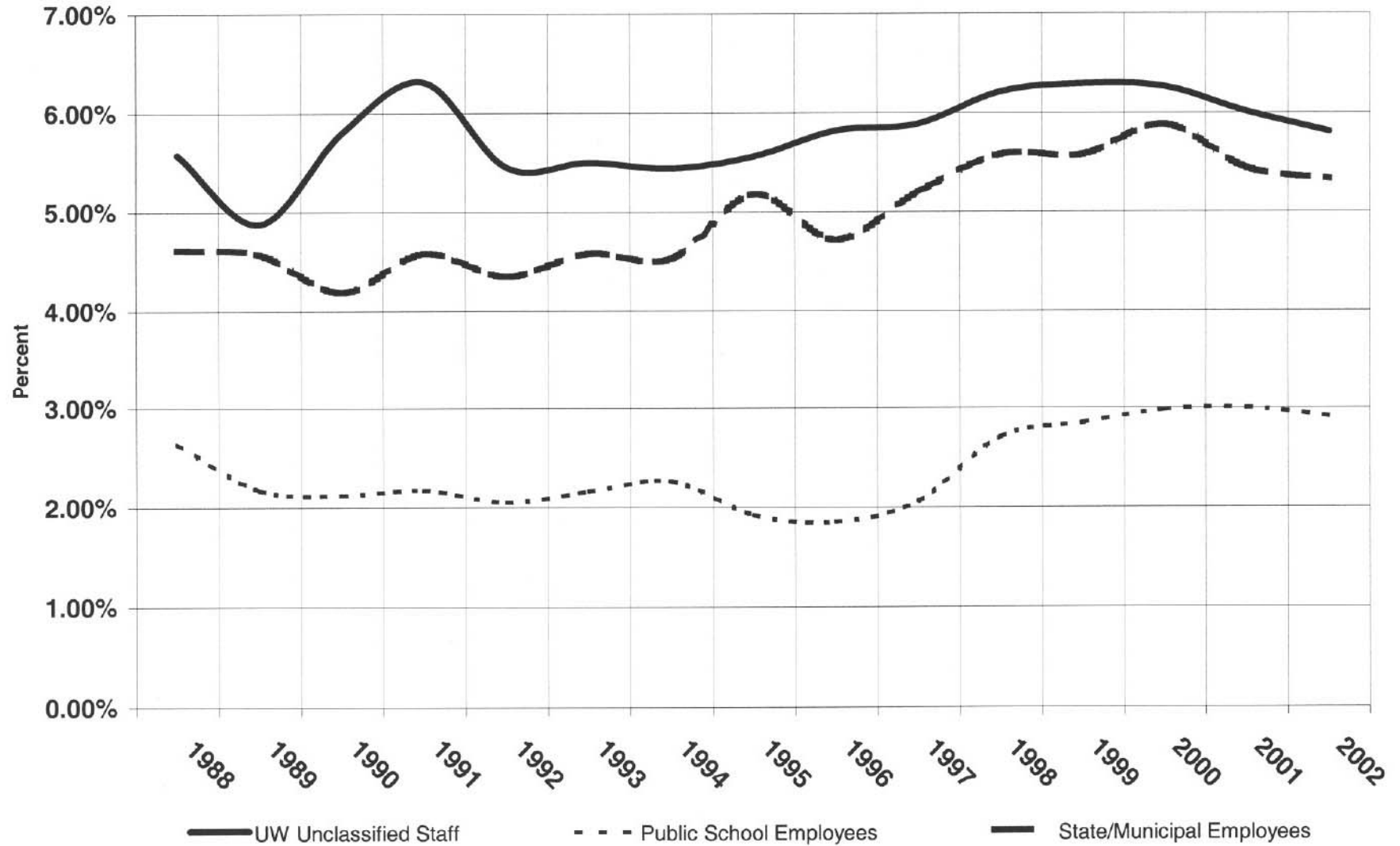
September 9, 2004

## 2002 Faculty and Academic Staff Resignations

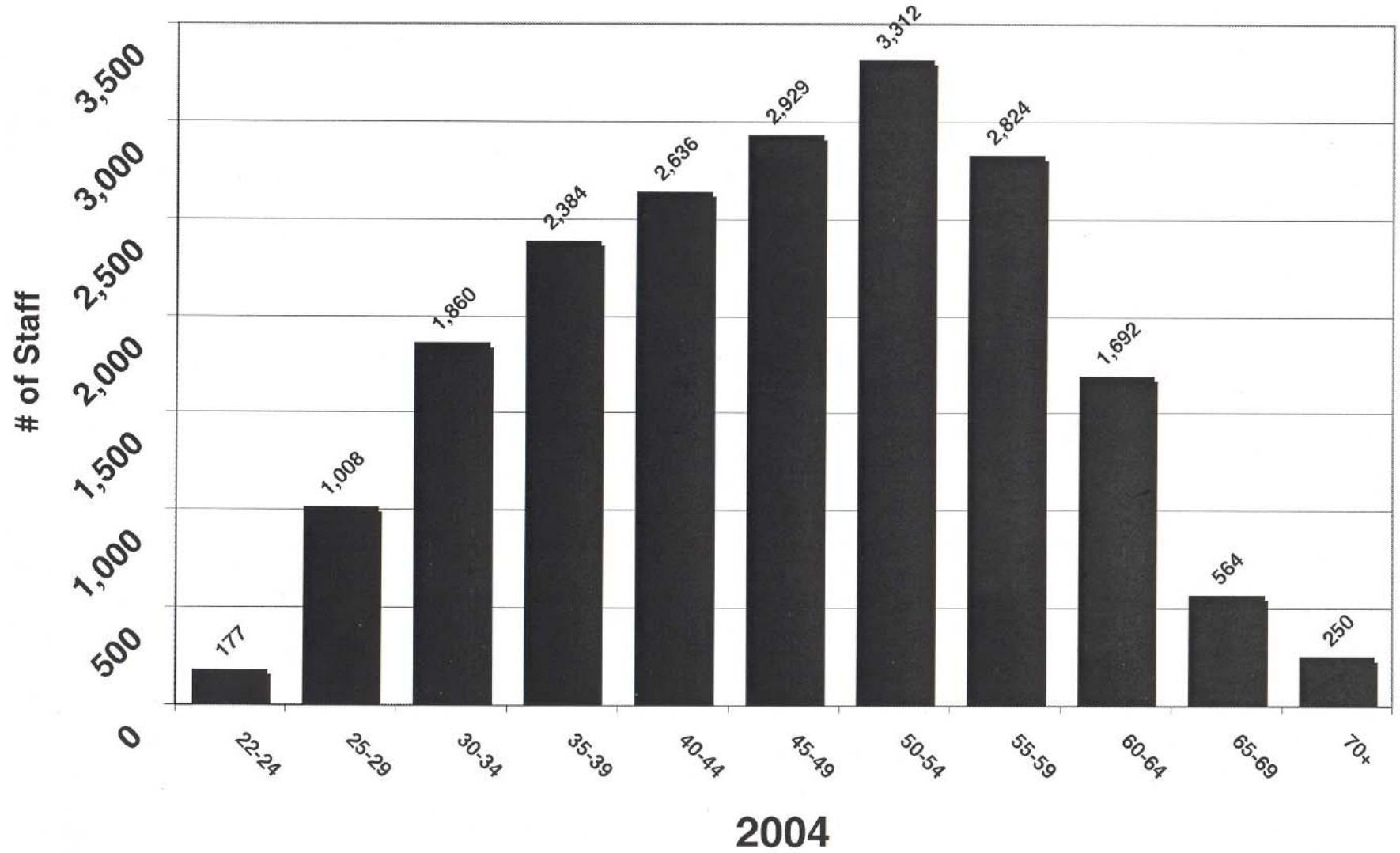


■ Retirements ■ Resignations from other than Retirement

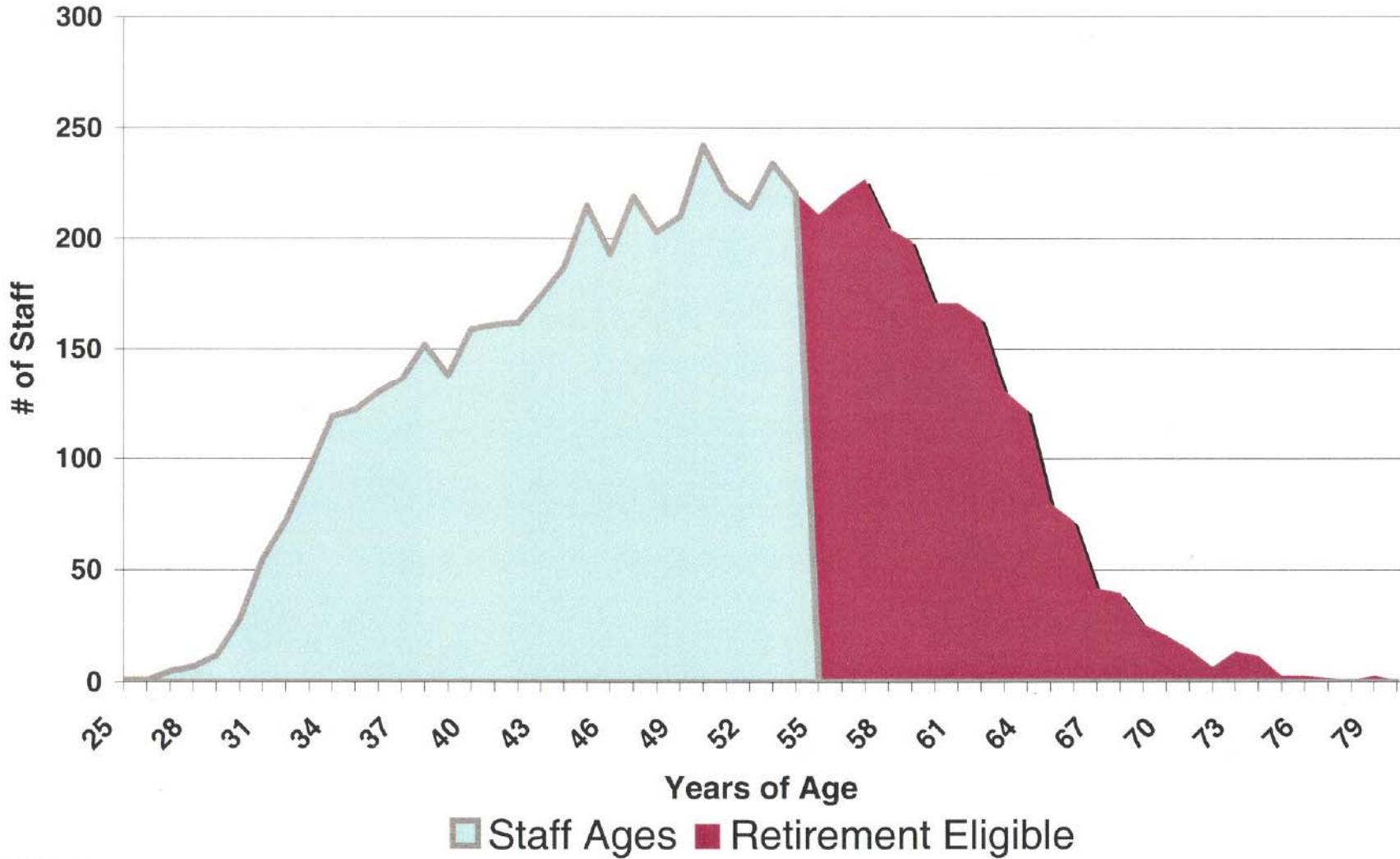
## Resignations from Other Than Retirements



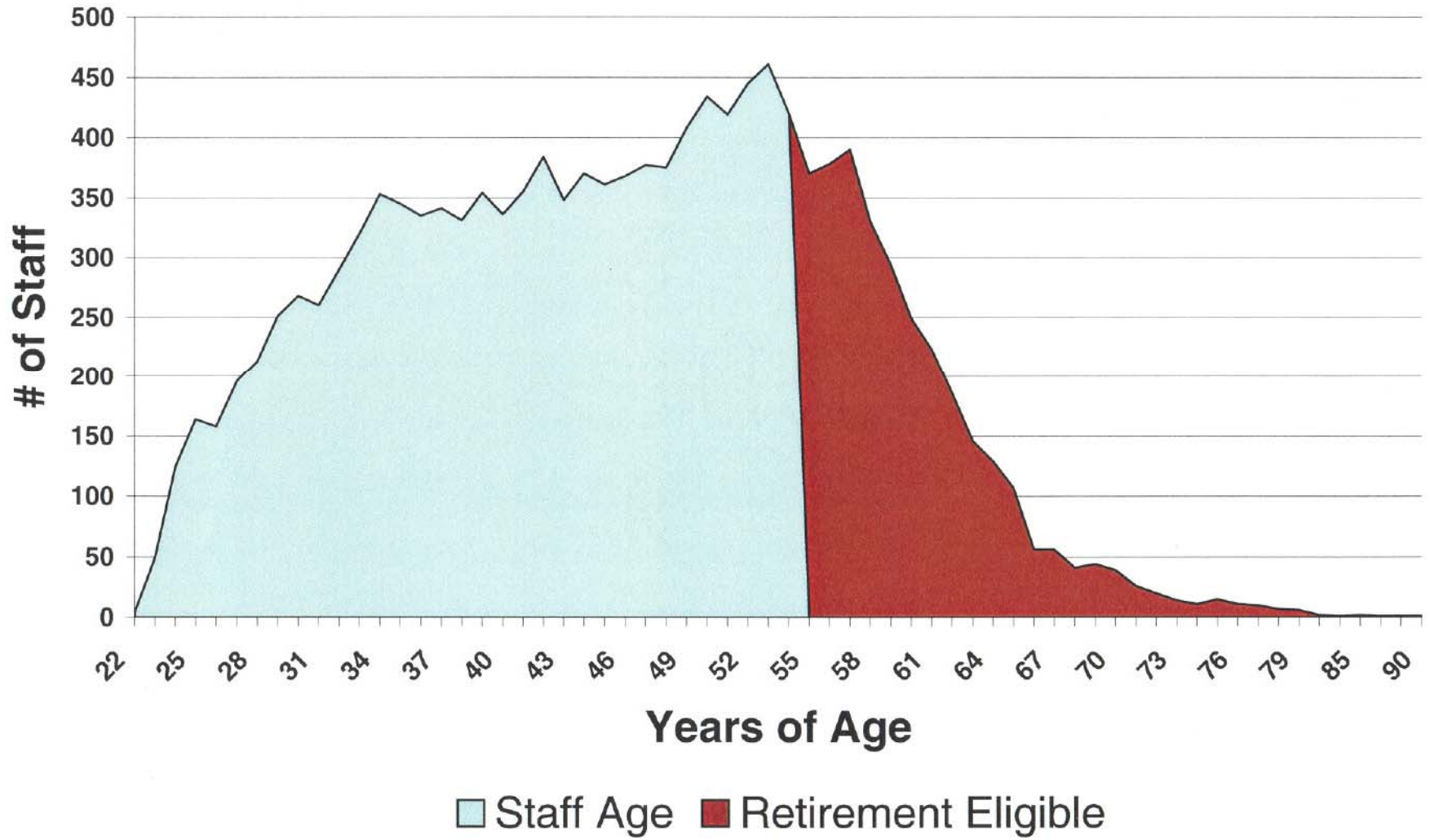
# Unclassified Age Ranges



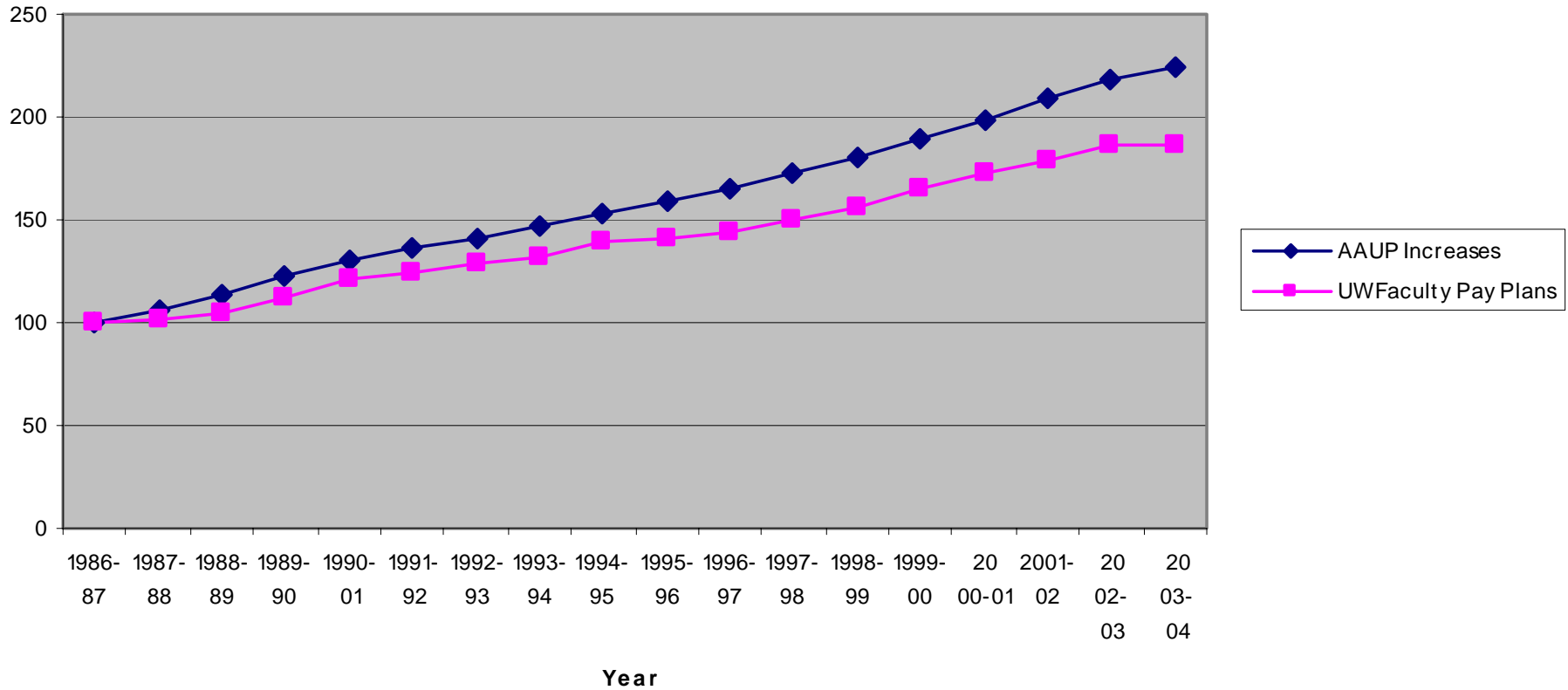
# Faculty 2004



## 2004 Academic Staff Ages



# AAUP Reported Continuing Faculty Salary Increases (all ranks) vs. UW Faculty Pay Plans

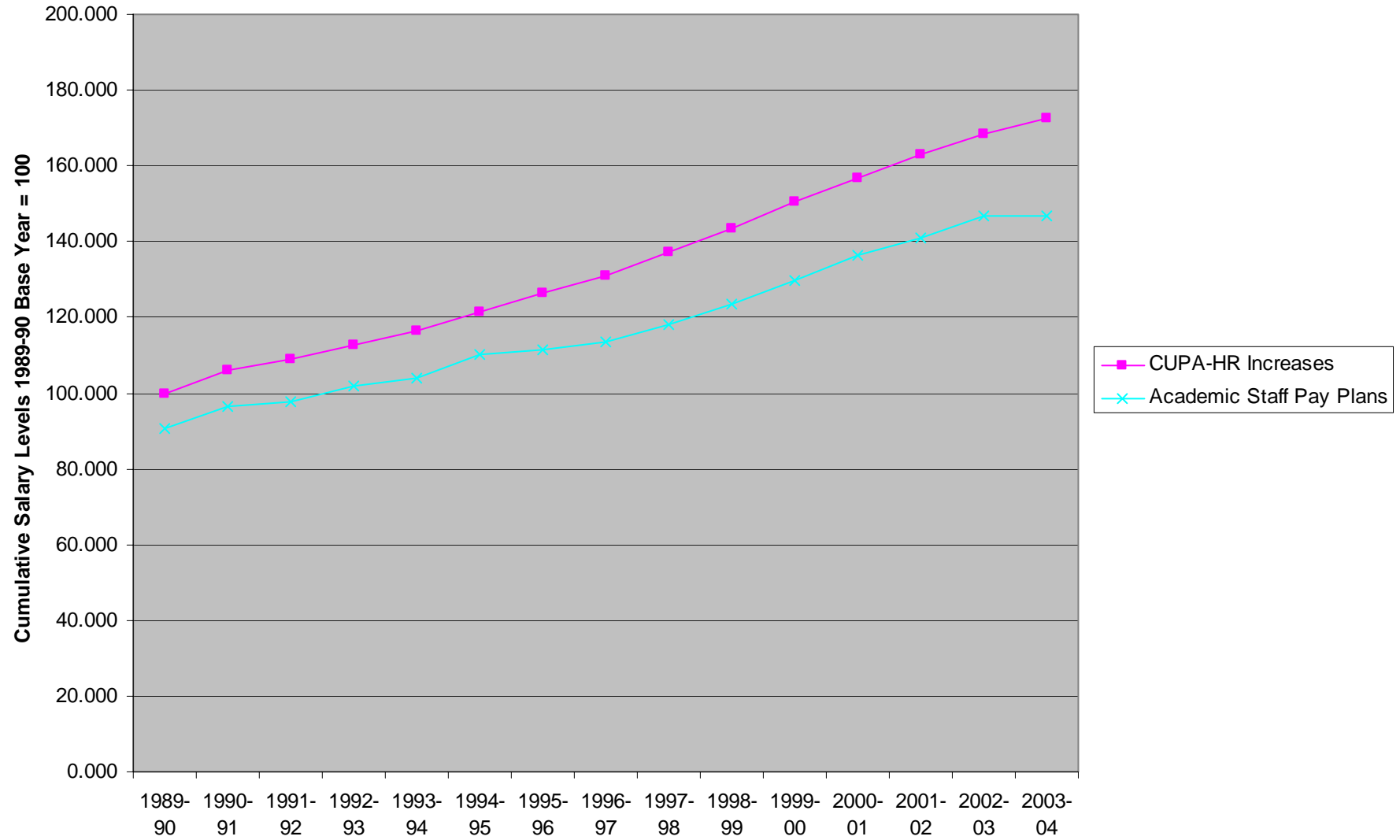


UNIVERSITY OF WISCONSIN SYSTEM  
DISTANCE FROM THE PEER GROUP MEDIAN (EXCLUDING WISCONSIN)  
CLUSTER ANALYSIS PEER GROUP  
BASED ON 2003-04 UW AVERAGES AND THE MEDIAN OF PEER GROUP AVERAGES

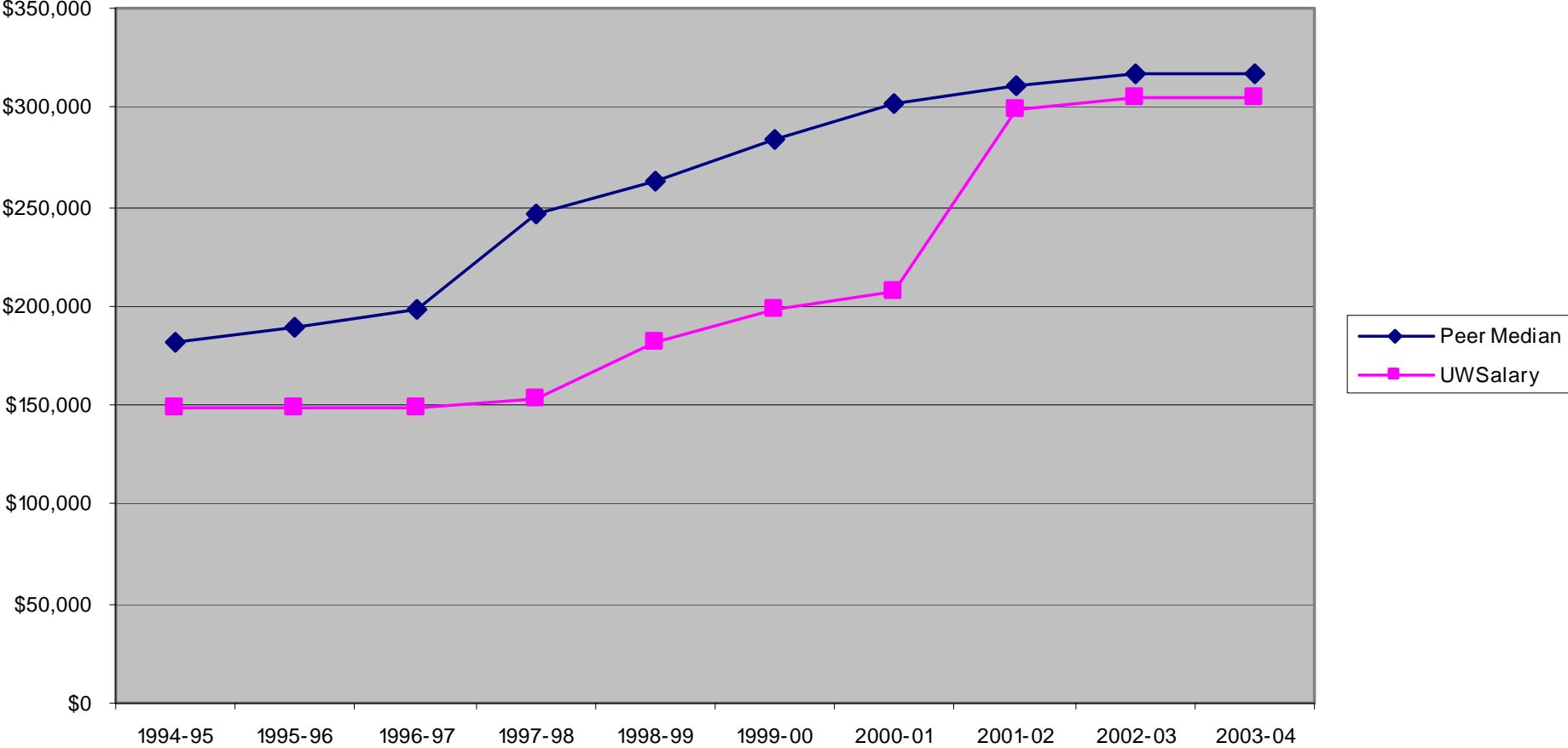
	DISTANCE FROM THE PEER GROUP MEDIAN		
	<u>PROFESSORS</u>	<u>ASSOCIATE PROFESSORS</u>	<u>ASSISTANT PROFESSORS</u>
MADISON	\$7,000	(\$3,400)	(\$1,300)
MILWAUKEE	\$4,300	\$100	(\$3,100)
COMPREHENSIVE UNIVERSITIES			
EAU CLAIRE	\$8,300	\$5,700	\$2,300
GREEN BAY	\$10,900	\$6,900	\$3,400
LA CROSSE	\$2,600	\$4,400	\$1,300
OSHKOSH	\$6,800	\$3,400	\$1,200
PARKSIDE	\$5,900	\$1,500	\$500
PLATTEVILLE	\$8,100	\$8,500	\$2,100
RIVER FALLS	\$12,200	\$5,900	\$2,200
STEVENS POINT	\$8,100	\$6,100	\$5,400
STOUT	\$8,600	\$6,400	\$3,800
SUPERIOR	\$11,700	\$8,600	\$1,500
WHITEWATER	\$3,500	\$4,300	(\$1,000)
CLUSTER	\$7,900	\$5,600	\$2,100
UW-COLLEGES	\$12,500	\$9,000	\$10,000
UNIVERSITY EXTENSION	\$7,000	(\$3,400)	(\$1,300)



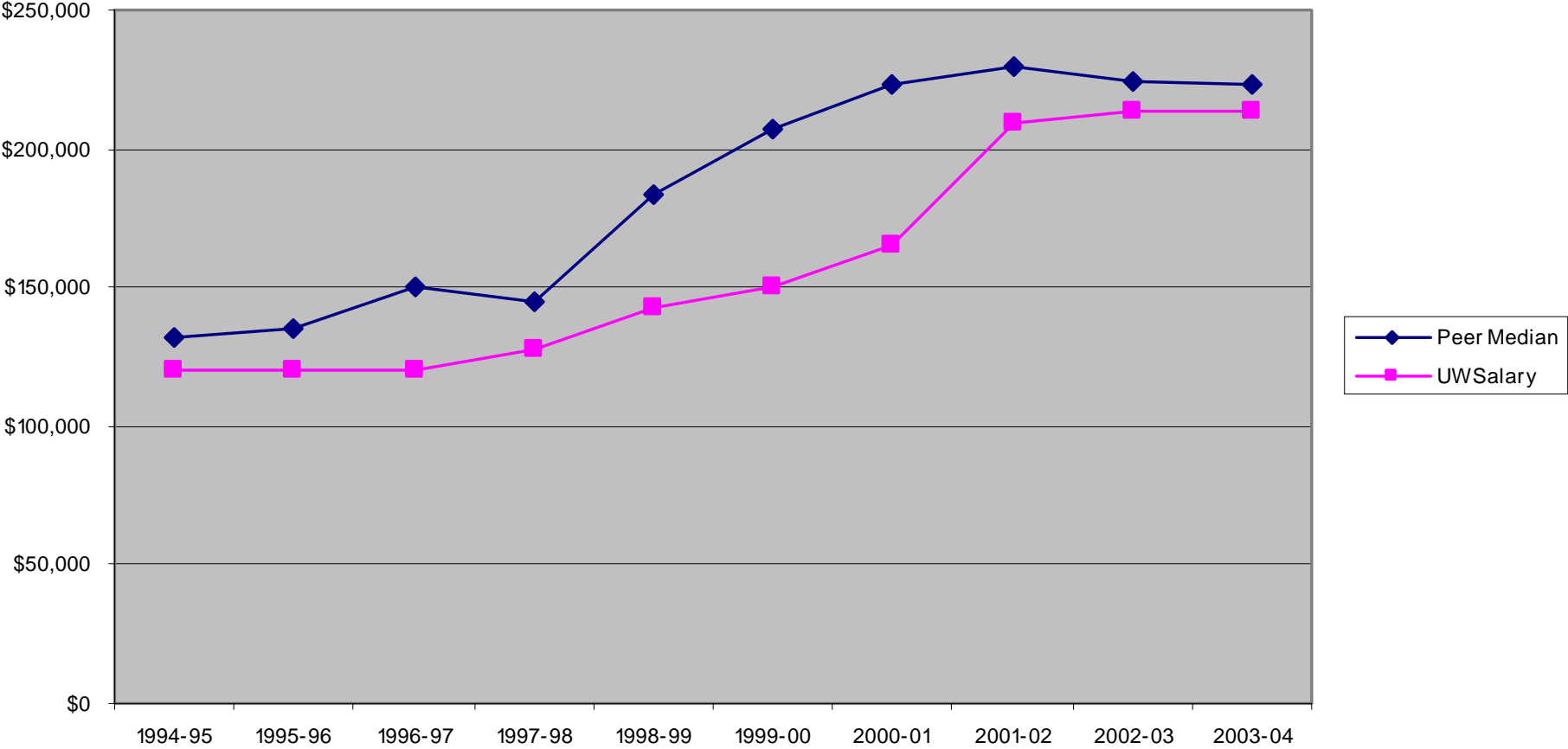
### CUPA-HR Median Increases vs. UW Academic Staff Pay Plans



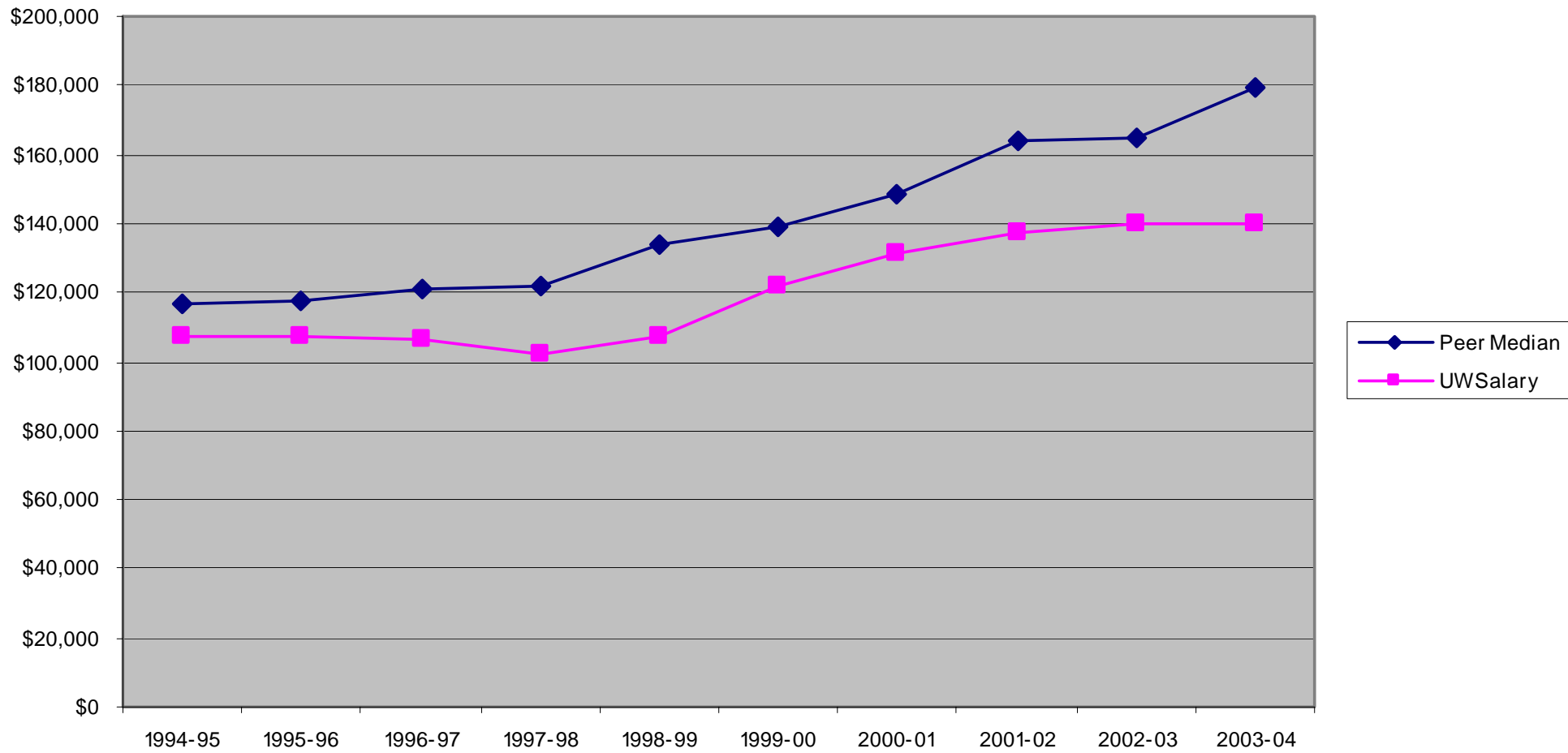
# UW System President Salary and the Peer Group Median



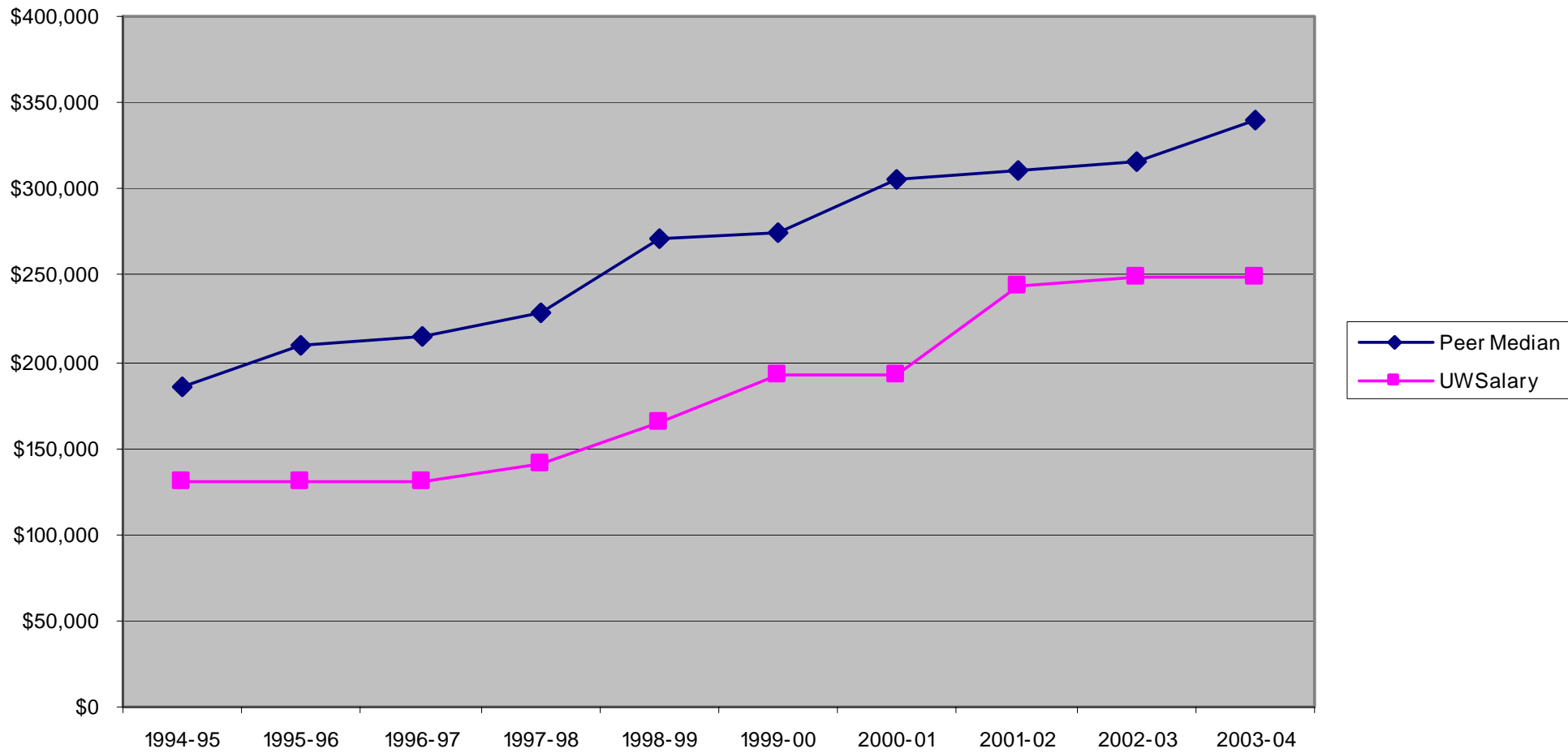
# Senior Vice President Average Salary and the Peer Group Median



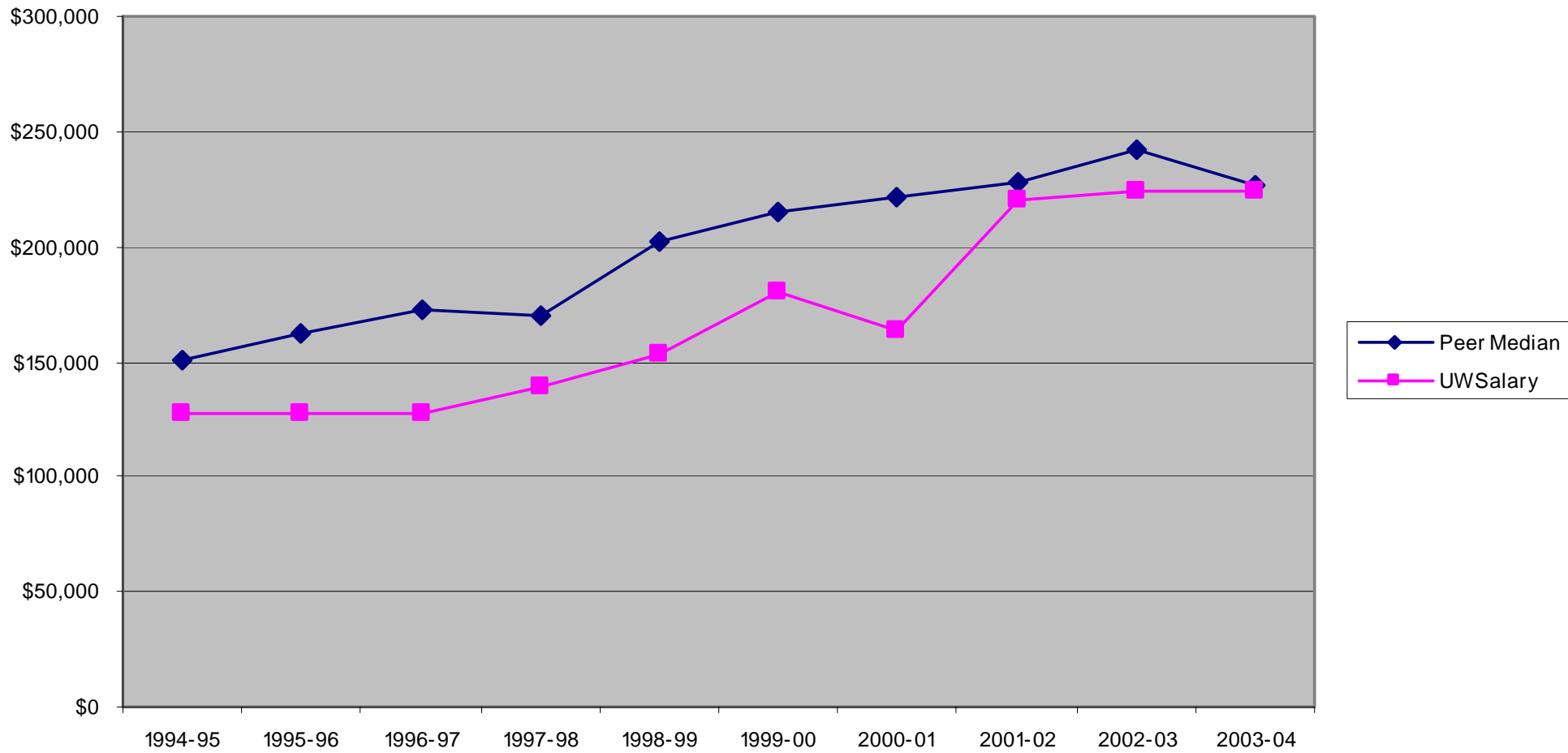
## Vice President Average Salary and the Peer Group Median



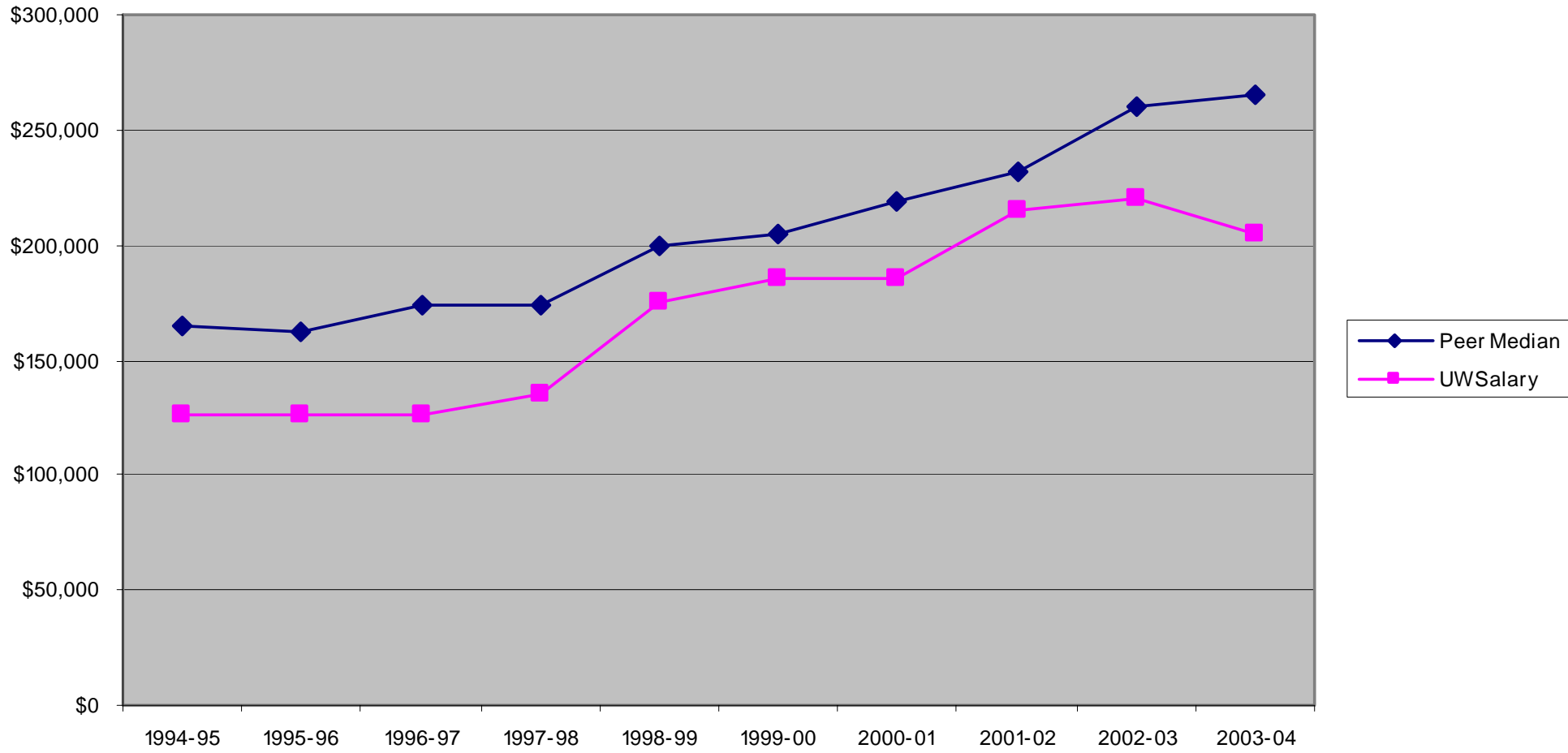
## UW-Madison Chancellor Salary and the Peer Group Median



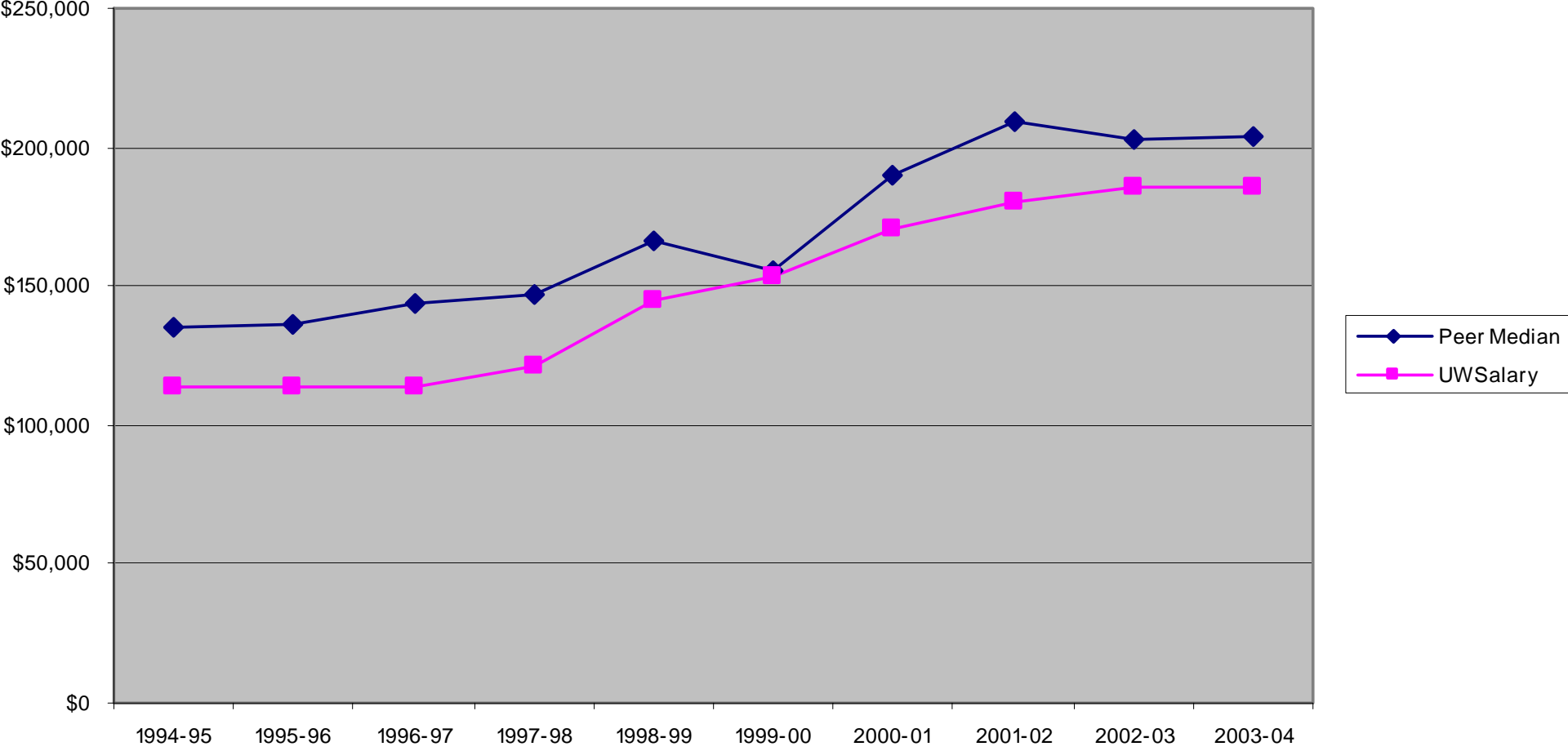
## UW-Madison Provost and Vice Chancellor and the Peer Group Median



## UW-Milwaukee Chancellor and the Peer Group Median

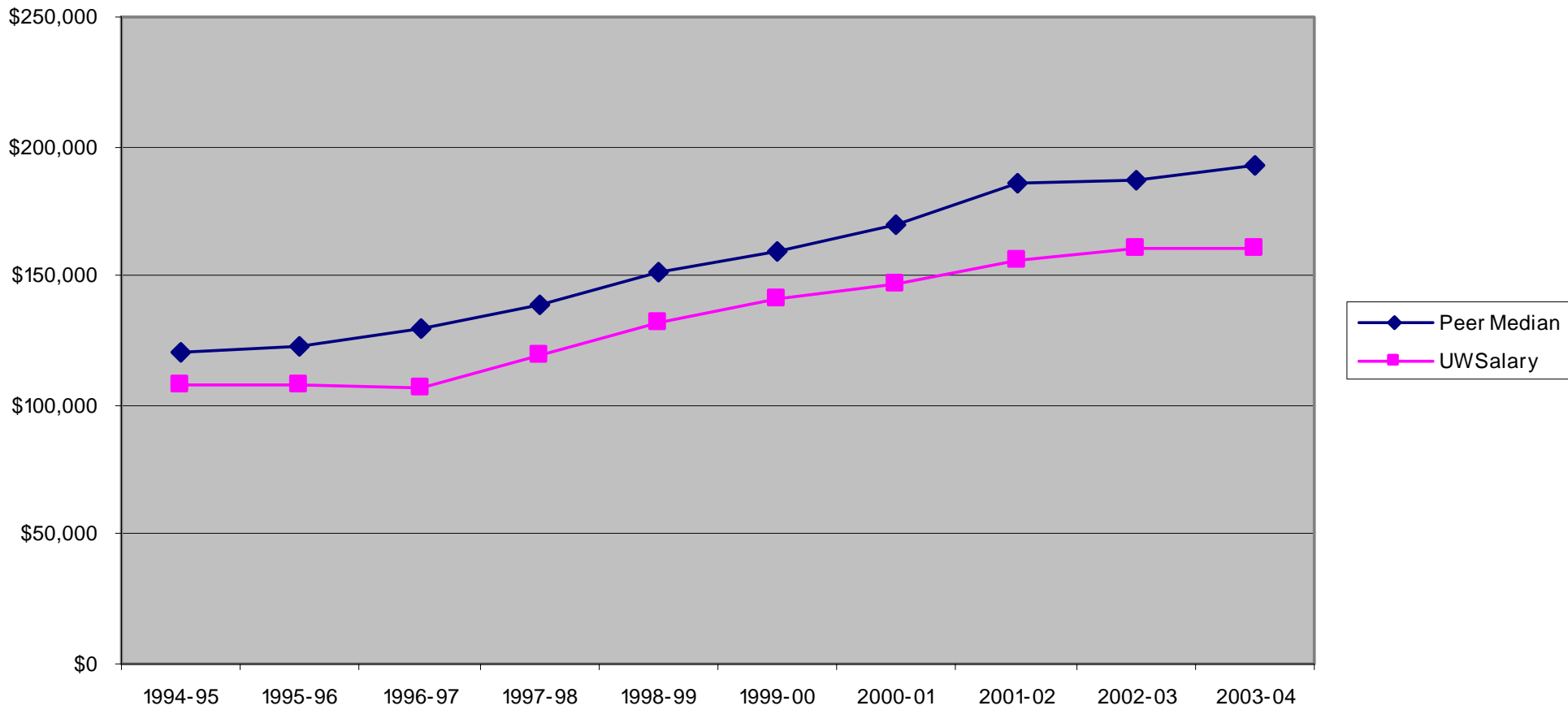


# UW-Milwaukee Provost and Vice Chancellor and the Peer Group Median





## UW Chancellor Average Salary and the Peer Group Median (Non-doctoral Institutions)



## UW Provost and Vice Chancellor Average Salary and the Peer Group Median (Non-doctoral Institutions)

