

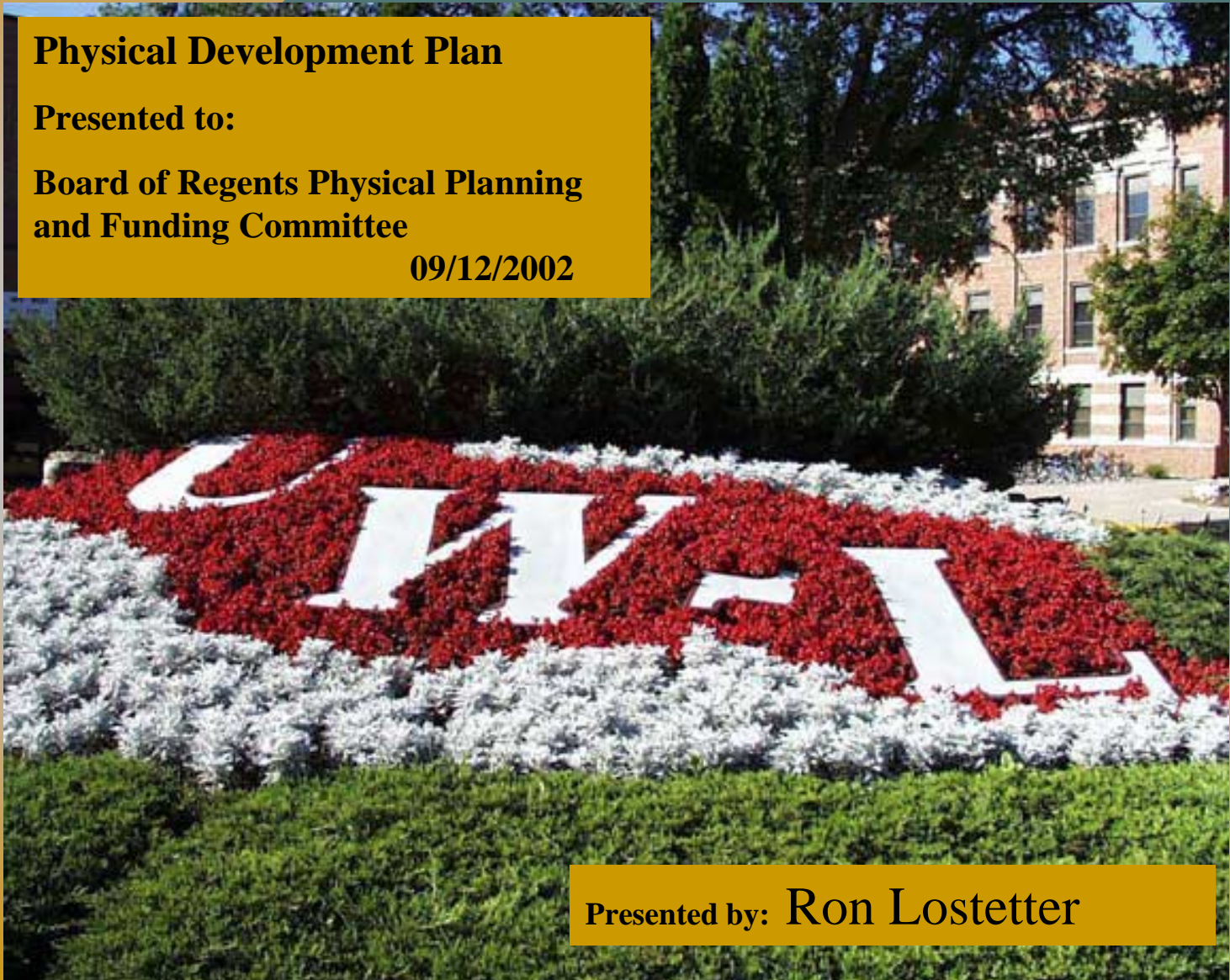
# University of Wisconsin La Crosse

## Physical Development Plan

Presented to:

Board of Regents Physical Planning  
and Funding Committee

09/12/2002



Presented by: Ron Lostetter

# Campus Of Choice In Upper Midwest

- 5,600 Freshman Applications
- 3,200 Accepted
- 1,560 Enrolled

# Selected Student Demographics

- Fall 2002 Eighth Straight Brightest Freshman Class (ACT 24.4)
- 70% Of Freshman Top 25% Of High School Class
- 25% Of Freshman Top 10% Of High School Class
- Most Recent First Year Retention Rate 84%

# Select Academic Programs

- Sciences
- Allied Health
- Business
- Technology
- Teacher Education

# Student Expectations/Demands

- Excellent Instruction
- Access To Technology
- Excellent Facilities

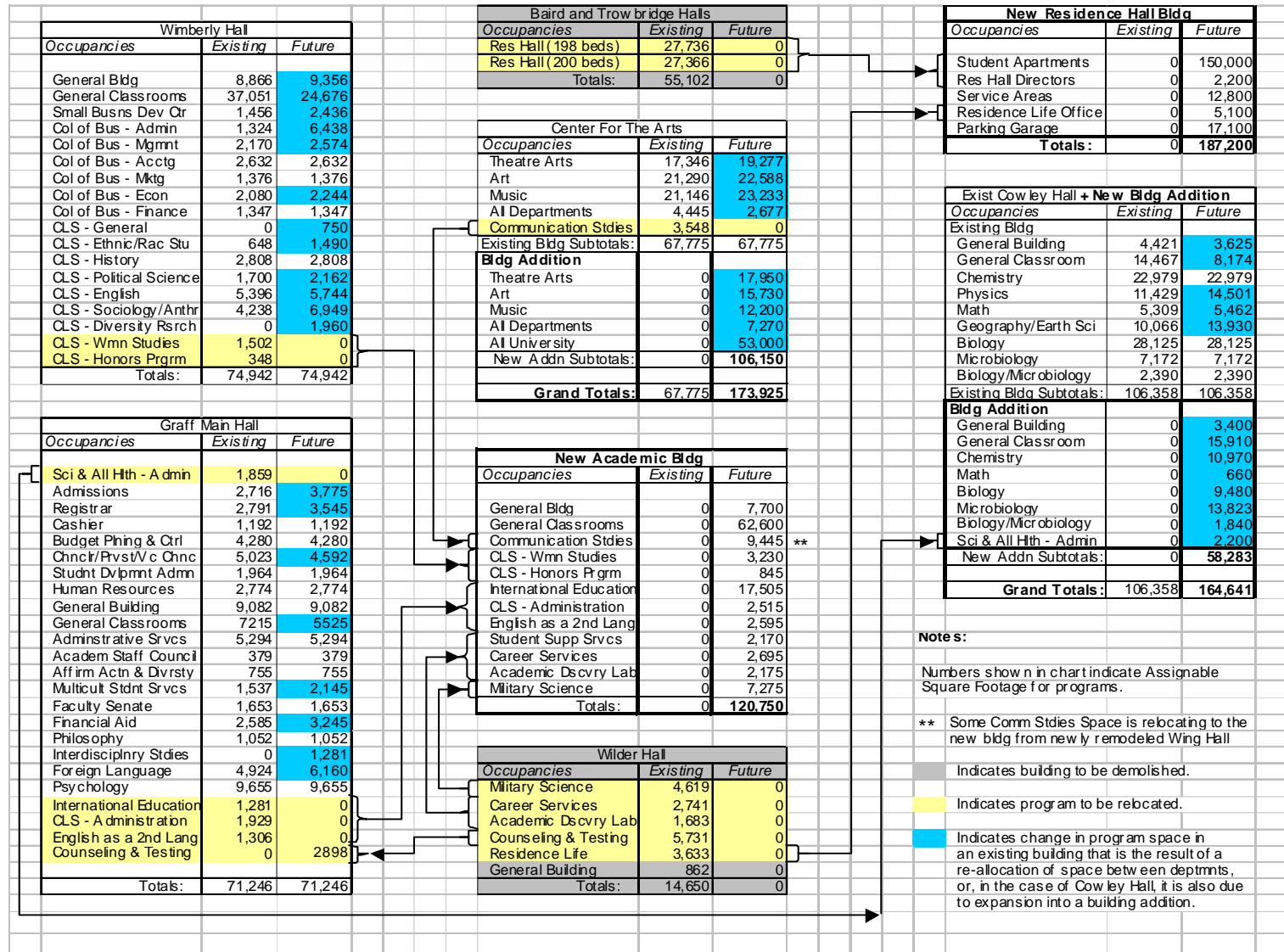
# Physical Facilities Planning Process

- Driven By Campus Strategic Plan
- Inclusive Process
  - UW System Capital Planning And Budget
- Future Oriented
- Emphasis On Learning
- Quality

# Typical Classroom Survey Data

UW- IACROSSE														
GENERAL CLASSROOM SURVEY- CATEGORIES 'A' & 'B'														
BLDG	APPROX	APPROX	CURRENT	REC	FLOOR	WALL	CEILING	WINDOW	ROOM	"A"/"B"	"W" TO "D"	"D" TO "W"	TABLE	
ROOM	ASF	"W" X "D"	CEILING	SEATING	25 SF	SURFACE	SURFACE	SURFACE	TREATMENT	LIGHTING	CAT	RATIO	RATIO	TYPE
<b>WIMBERLY HALL:</b>														
124	490	27.8' X16.8'	10.1/11'	35		VCT	Conc Blk	Concrete	Vert Blinds	12FL2 tube	"B"	1.65	0.61	
125	490	27.8' X16.8'	10.1/11'	34		VCT	Conc Blk	Concrete	Vert Blinds	12FL2 tube	"B"	1.65	0.6	
126	490	27.8' X16.8'	10.1/11'	35T		Carpet	Conc Blk	Concrete	Vert Blinds	12FL2 tube	"B"	1.65	0.6	Rectangular
135	494	28.4' X17'	10.1/11'	28		VCT	Conc Blk	Concrete	Vert Blinds	12FL2 tube	"B"	1.67	0.6	
136	683	23.5' X28.4'	10.1/11'	32T	27	Carpet	Conc Blk	Concrete	Vert Blinds	18FL2 tube	"A"	0.83	1.21	Rectangular
137	702	27.8' X24.4'	10.1/11'	49	28	VCT	Conc Blk	Concrete	Vert Blinds	18FL2 tube	"A"	1.14	0.88	
138	781	27.8' X26.7'	10.1/11'	40T	31	Carpet	Conc Blk	Concrete	Vert Blinds	18FL2 tube	"A"	1.04	0.96	Round
139	707	23.5' X24.4'	10.1/11'	43T	28	VCT	Conc Blk	Concrete	Vert Blinds	24FL2 tube 14 Incand	"A"	0.96	1.04	Rectangular

# UW-L Origin/Destination Chart



**Notes:**

Numbers shown in chart indicate Assignable Square Footage for programs.

\*\* Some Comm Stds Space is relocating to the new bldg from newly remodeled Wing Hall

Indicates building to be demolished.

Indicates program to be relocated.

Indicates change in program space in an existing building that is the result of a re-allocation of space between deptmts, or, in the case of Cowley Hall, it is also due to expansion into a building addition.



# Priority Order Space Needs

- General Access **Classroom** Space
- Increased/Updated **Science Labs**
- Updated Spaces For **Business Administration**
- Updated Spaces For **Health Education/Exercise Sport Science**
- Increased/Updated Space For **Theatre Arts**

# Exterior Development

- Develop Central Street Bisecting Campus (Badger St.)
- Continue To Develop Pedestrian Oriented Campus (Farwell, 16<sup>th</sup>, 17<sup>th</sup> Sts)

# Transportation/Circulation Plan

- Shortage Of 1,000 Parking Spaces
- Parking Study Solutions
- Municipal Transportation Utility

# Planned Land Acquisitions

- Eight Sites Within Current Campus Boundary
- City Municipal Pool
- Other?

# Utilities and Services

- Add Third Chiller And Cooling Tower To Chiller Plant (New Res. Hall/New Academic Bldg./Existing Bldg. Not Connected To Central Chiller Mitchell/Wittich)
- Add Bag House To Heating Plant

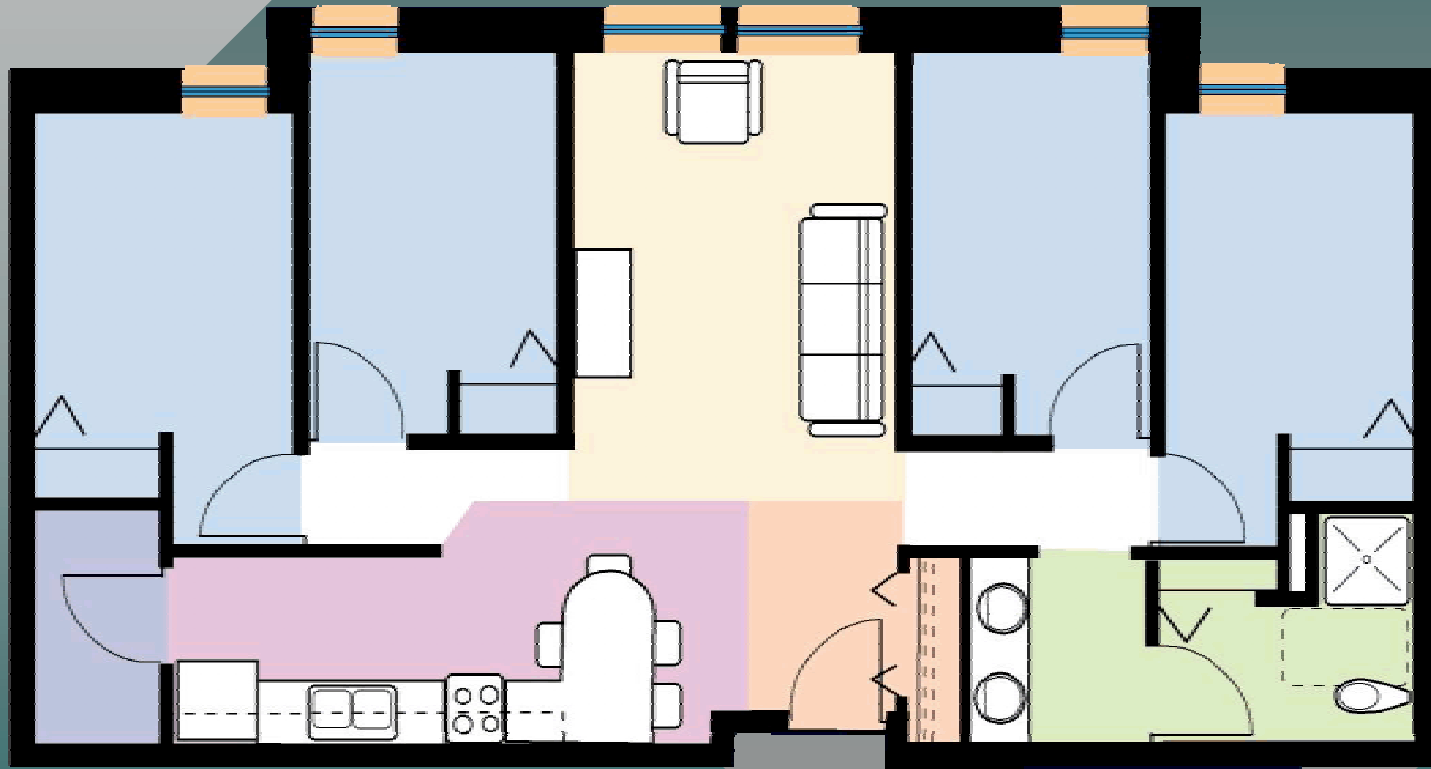
# Residence Halls

- Students Demand More Privacy/Space
- Increase Access
- Current 11 Halls Average 38 Years Old

A large teal diamond shape is centered on the page, with its vertices pointing towards the corners. The background is a light gray gradient.

**Construct New Residence Halls**

# Residence Hall 4 Bedroom Suite Floor Plan



Apartment 46 ft x 24 ft

Bedroom 11ft x 10 ft

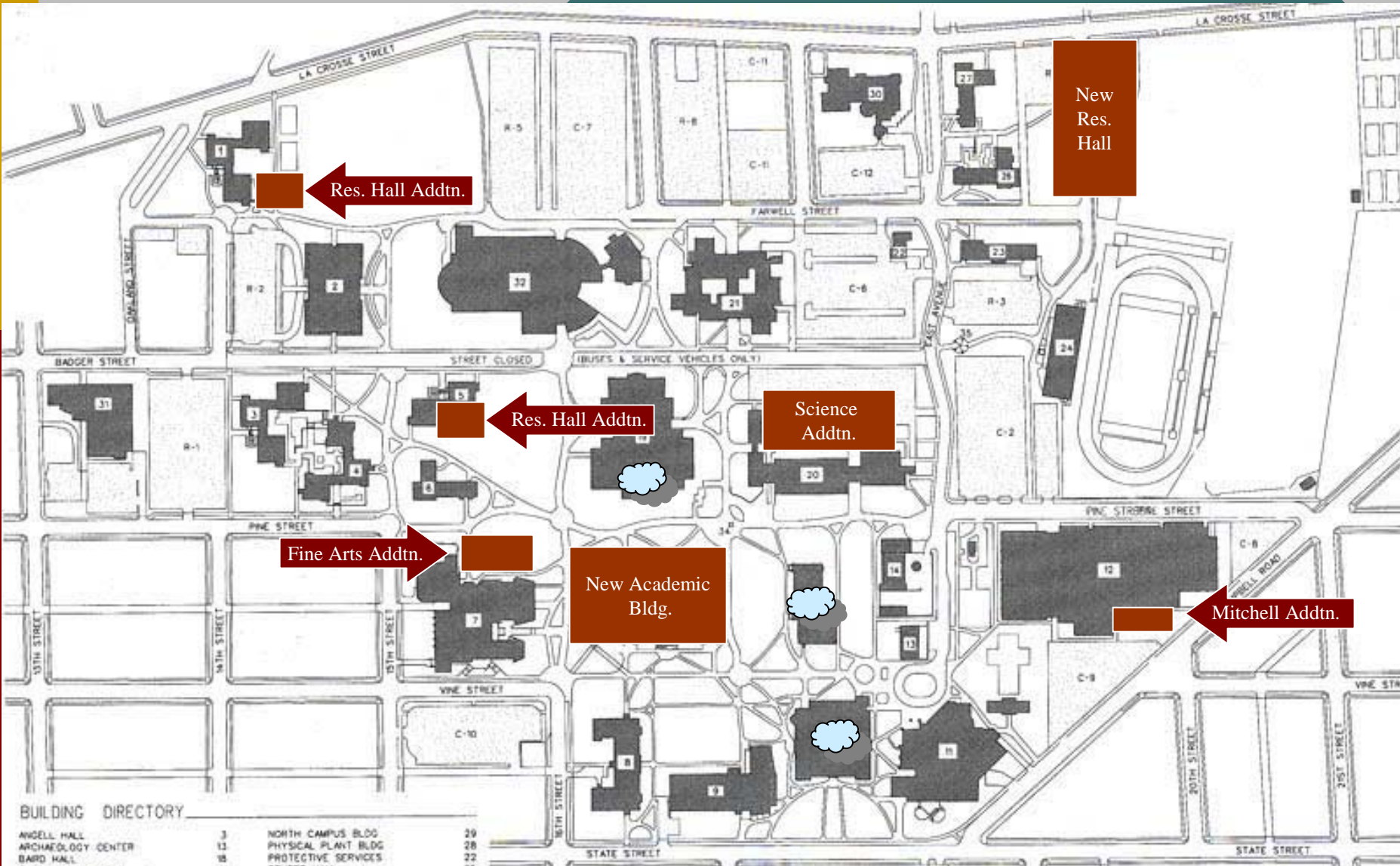




UW-Eau Claire's Chancellor's Hall

# UW-L Space Needs Solutions

- Construction Of New Residence Halls
- Construction Of New Academic Building
- Partial Remodeling of:
  - Wimberly Hall
  - Graff Main Hall
- Additions/Partial Remodeling To:
  - Cowley Hall
  - Mitchell Hall
  - Center For The Arts
- Renovation of Wittich Hall



**BUILDING DIRECTORY**

ANGELL HALL	3	NORTH CAMPUS BLDG	29
ARCHAEOLOGY CENTER	13	PHYSICAL PLANT BLDG	28
BAIRD HALL	18	PROTECTIVE SERVICES	22
CARTWRIGHT CENTER	11	REUTER HALL	25
CENTER for the ARTS	7	SANFORD HALL	26
CLEARY & FRIENDS ALUMN CENTER	30	LANDSCAPE SERVICE BUILDING	33
COATE HALL	1	RECREATIONAL EAGLE CENTER	32
COWLEY HALL	20	TROWBROOKE HALL	16
DRAKE HALL	5	VETERANS MEMORIAL STADIUM	24
GRAFF MAIN HALL	10	VETERANS MONUMENT	35
HEALTH SCIENCE CENTER	31	WENTZ HALL	6
HEATING PLANT	34	WHITE HALL	23
HOESCHLER CLOCK TOWER	14	WHITNEY CENTER	2
HUTCHINSON HALL	4	WILDER HALL	17
LARK HALL	27	W. CARL WINKERLY HALL	9
MITCHELL HALL	12	WING TECHNOLOGY CENTER	21
MORRIS HALL	8	WITICH HALL	15
MURPHY LIBRARY	19		



# Summary

- Physical Development Plan Reflects Program Directions
- High Expectations Of Students/Faculty
- Recognizes Changes In Instruction For The Future

# Summary

- Top Priority Is New General Access Classroom Space
- Support Of Professional Programs Specialized Space Needs
- Critical To UW-L's Ability To Contribute To Economic Future Of Region And State

# University of Wisconsin La Crosse

