



UNIVERSITY OF WISCONSIN SYSTEM
 2001-02 Operating Budget
 \$3.3 Billion

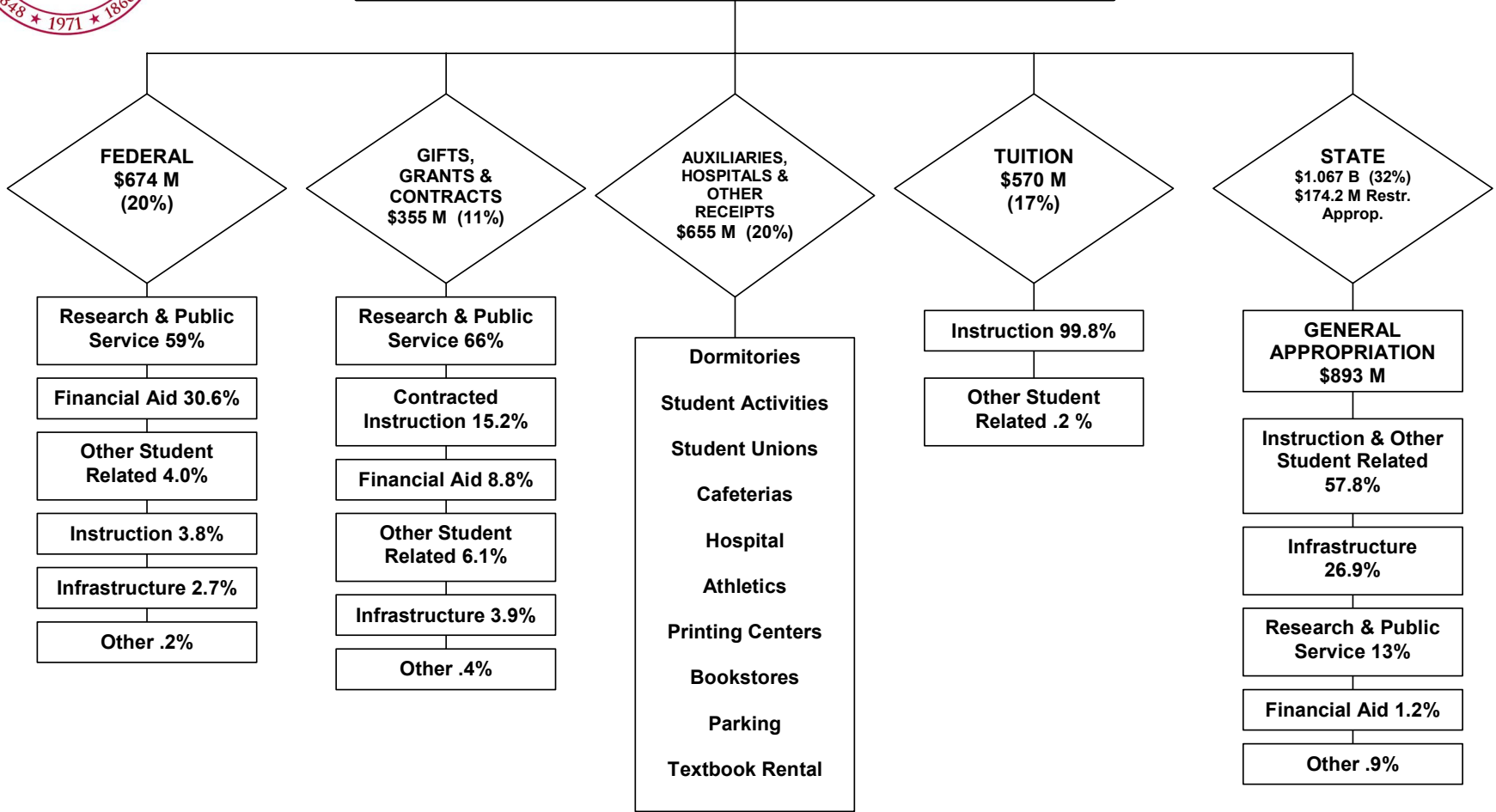


Figure 8

- (1) Other Student Related = Student Services and Academic Support
- (2) Infrastructure = Physical Plant, Institutional Support
- (3) Other = Farm Operations, Hospital, and Auxiliaries