



The UW System Budget – An Overview

Jay L. Smith, President

University of Wisconsin Board of Regents

April 4, 2002



2001-02 UW System Operating Budget

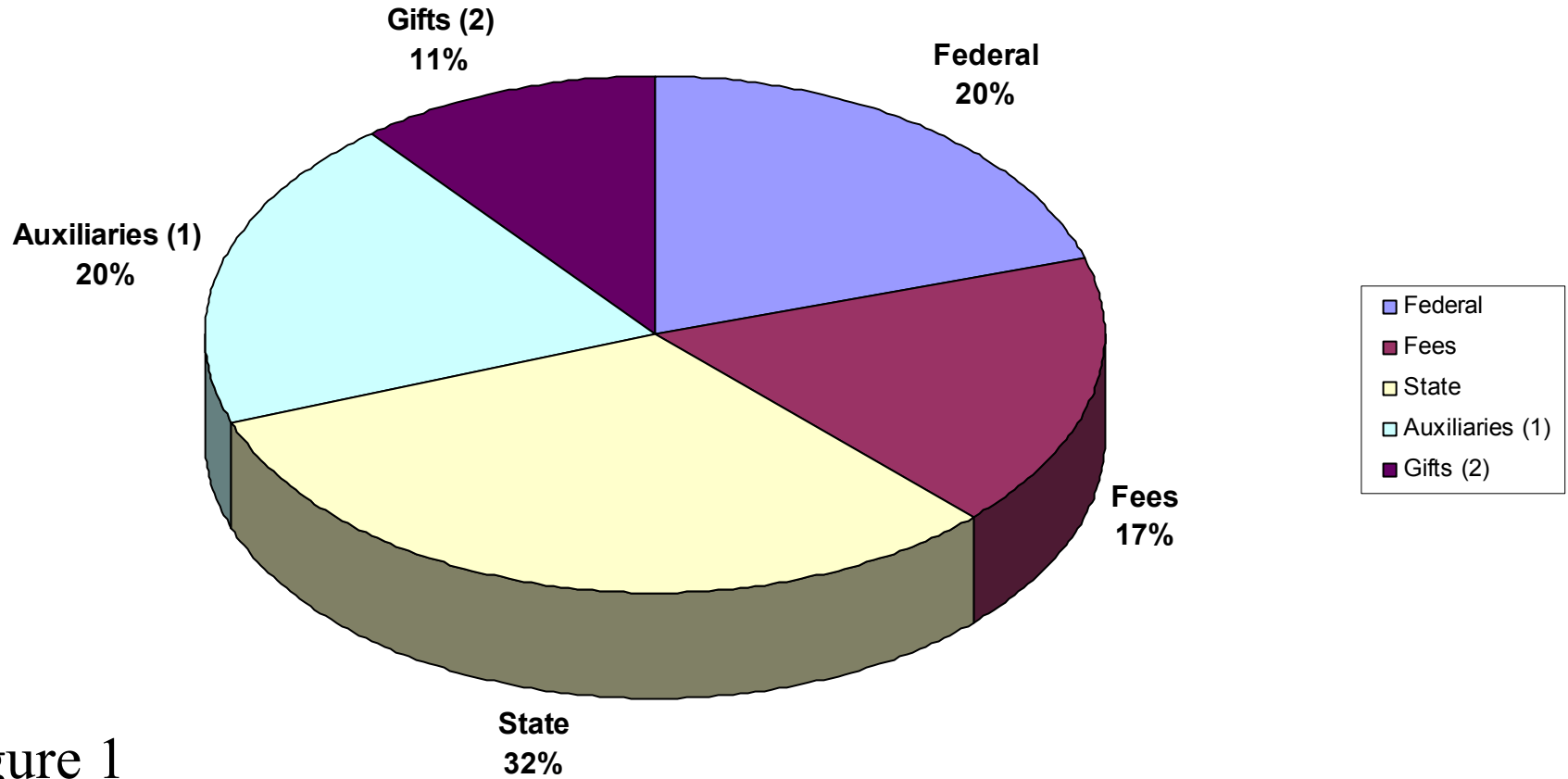


Figure 1

(1) Includes Hospitals & Other Receipts
(2) Includes Grants & Contracts



UW Budget Up; State Support Flat

Ten Year Comparison of Revenues, Adjusted for Inflation, 1991-2001

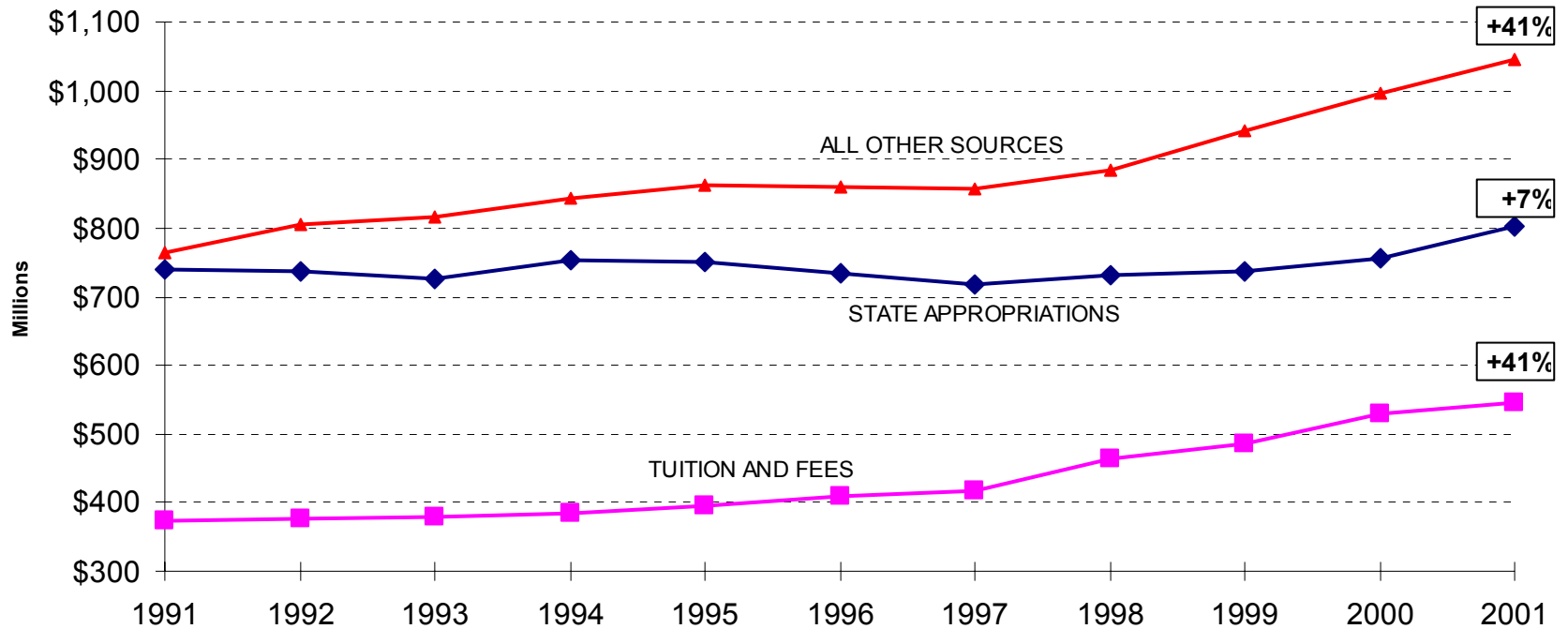


Figure 2



State of Wisconsin Spending Growth

FY 1992-2002

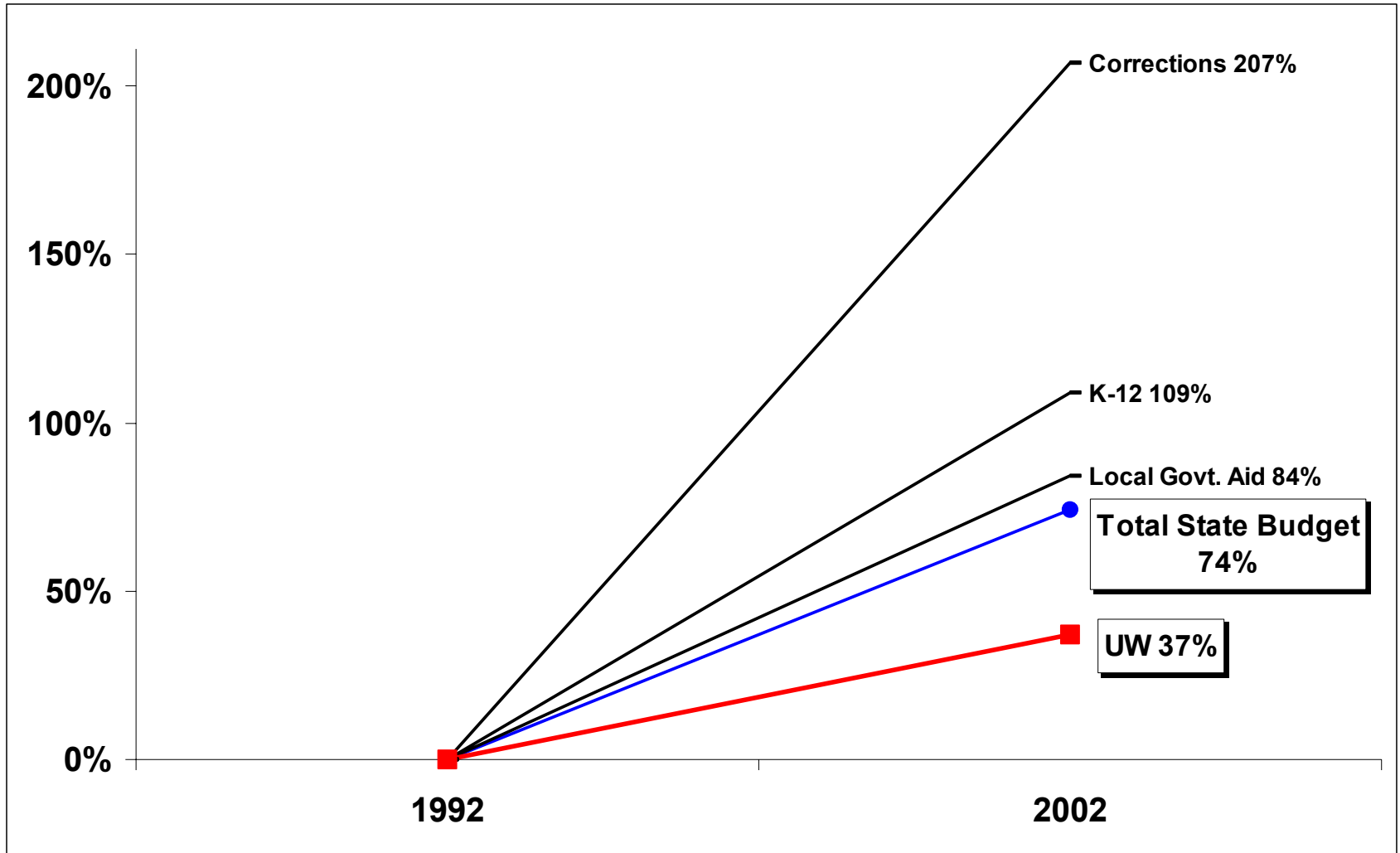


Figure 3



State Spending Growth

1992-2002

State Annual Fiscal Report

Ten Year Growth in Millions of Dollars

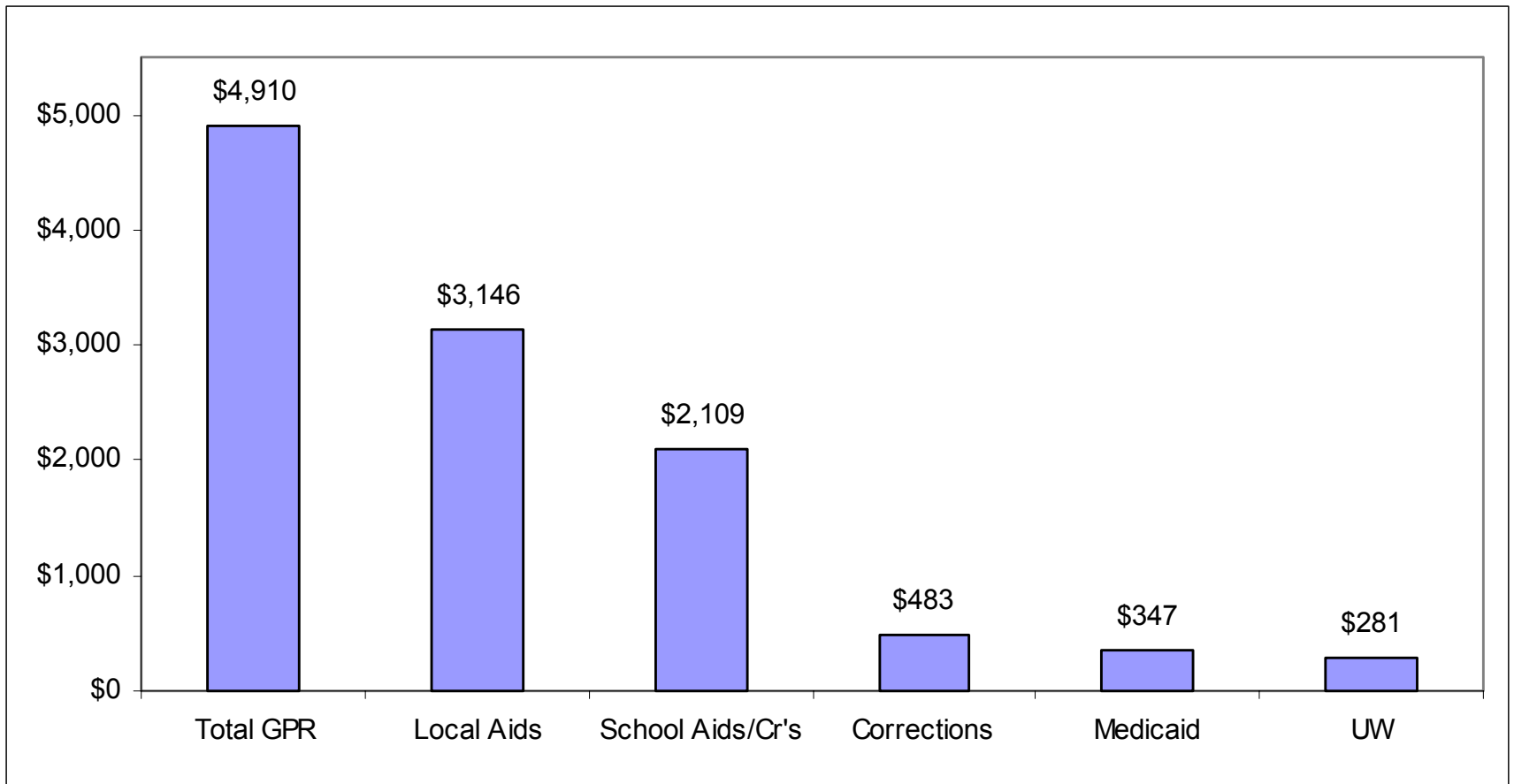
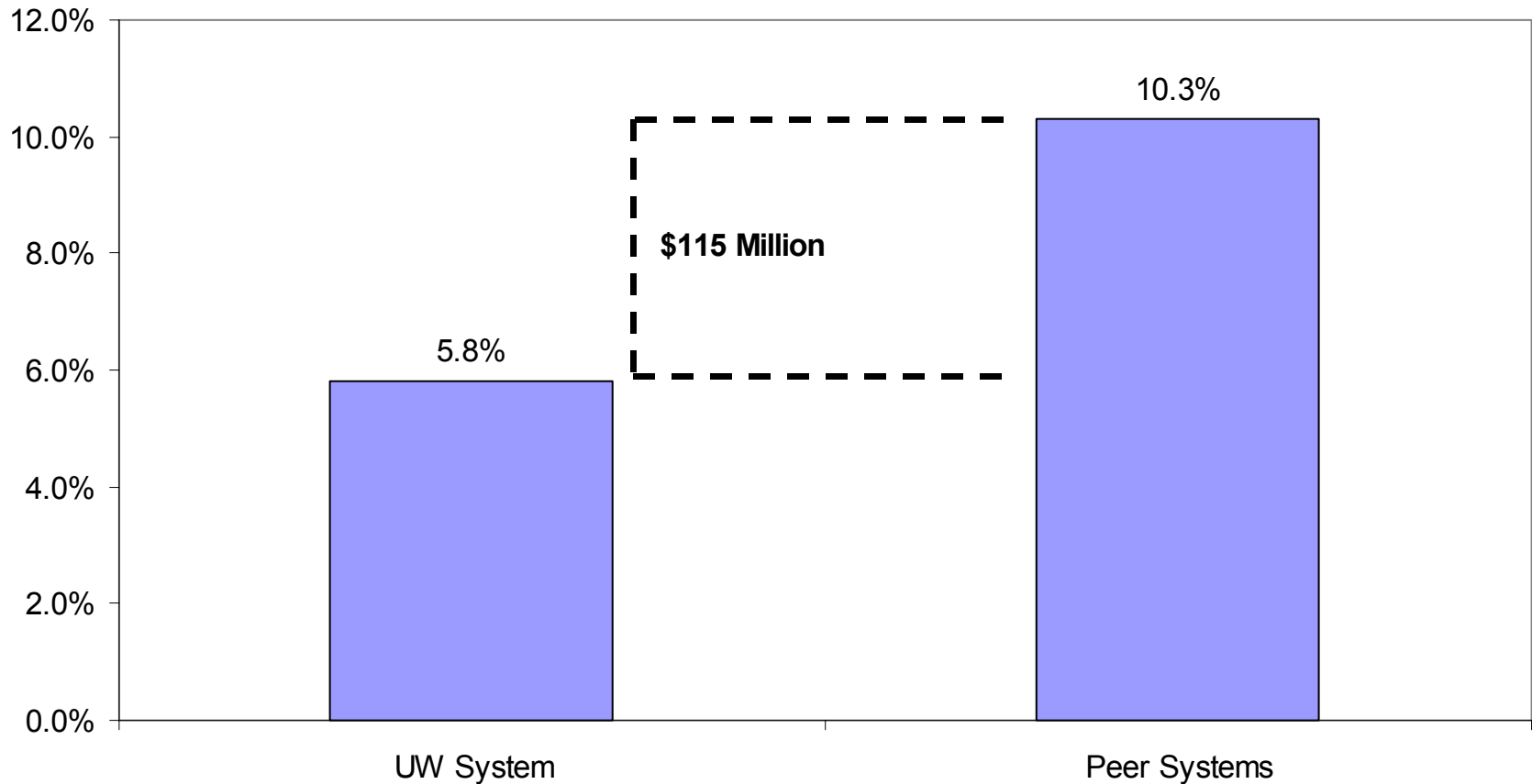


Figure 4



UW System Administrative Costs Relative to Peer Systems



* If the UW System was at the national average for peer University Systems, we would be spending an additional \$115 million per year on administrative costs.

Figure 5



Base Cuts to UW State Funding

1993-94	- \$3,086,200
1994-95	- \$637,000
1995-96	- \$23,593,100
1996-97	- \$19,570,100
1997-98	- \$2,765,900
1998-99	+ \$789,500
2001-02 *	- \$6,345,000
Total Cuts	- \$55,207,800

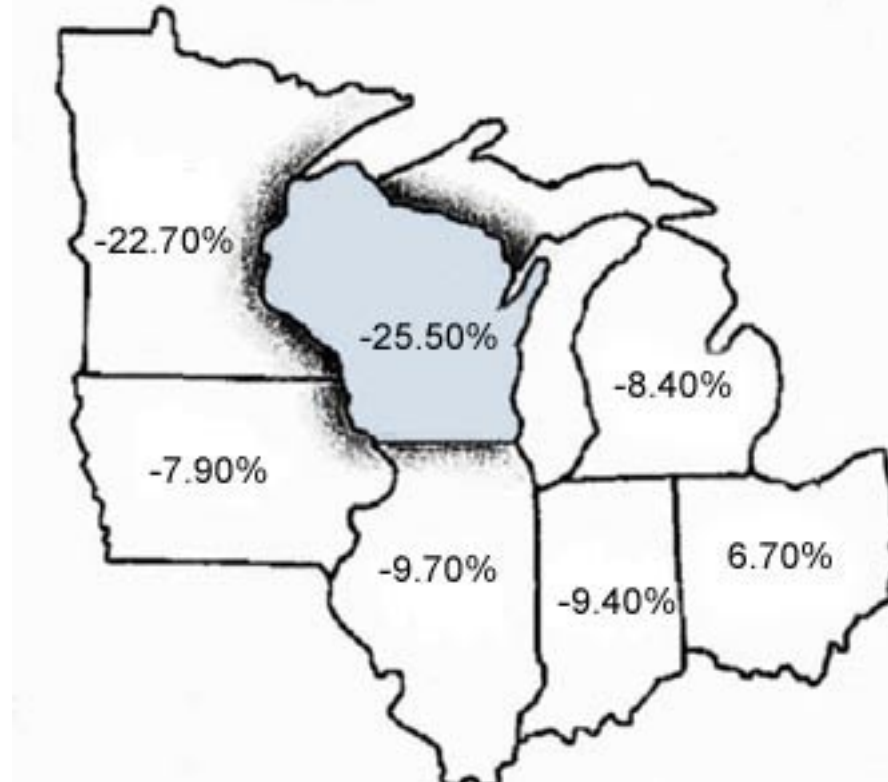
* Additional proposed reduction in Governor's Reform Package: \$10,097,000

Figure 6



Midwestern Higher Education Spending 1981-2001

State Higher Education Funding*



*AASCU State Issues Digest, 2002
Based on appropriations per \$1,000 of disposable personal income

Figure 7



UNIVERSITY OF WISCONSIN SYSTEM
 2001-02 Operating Budget
 \$3.3 Billion

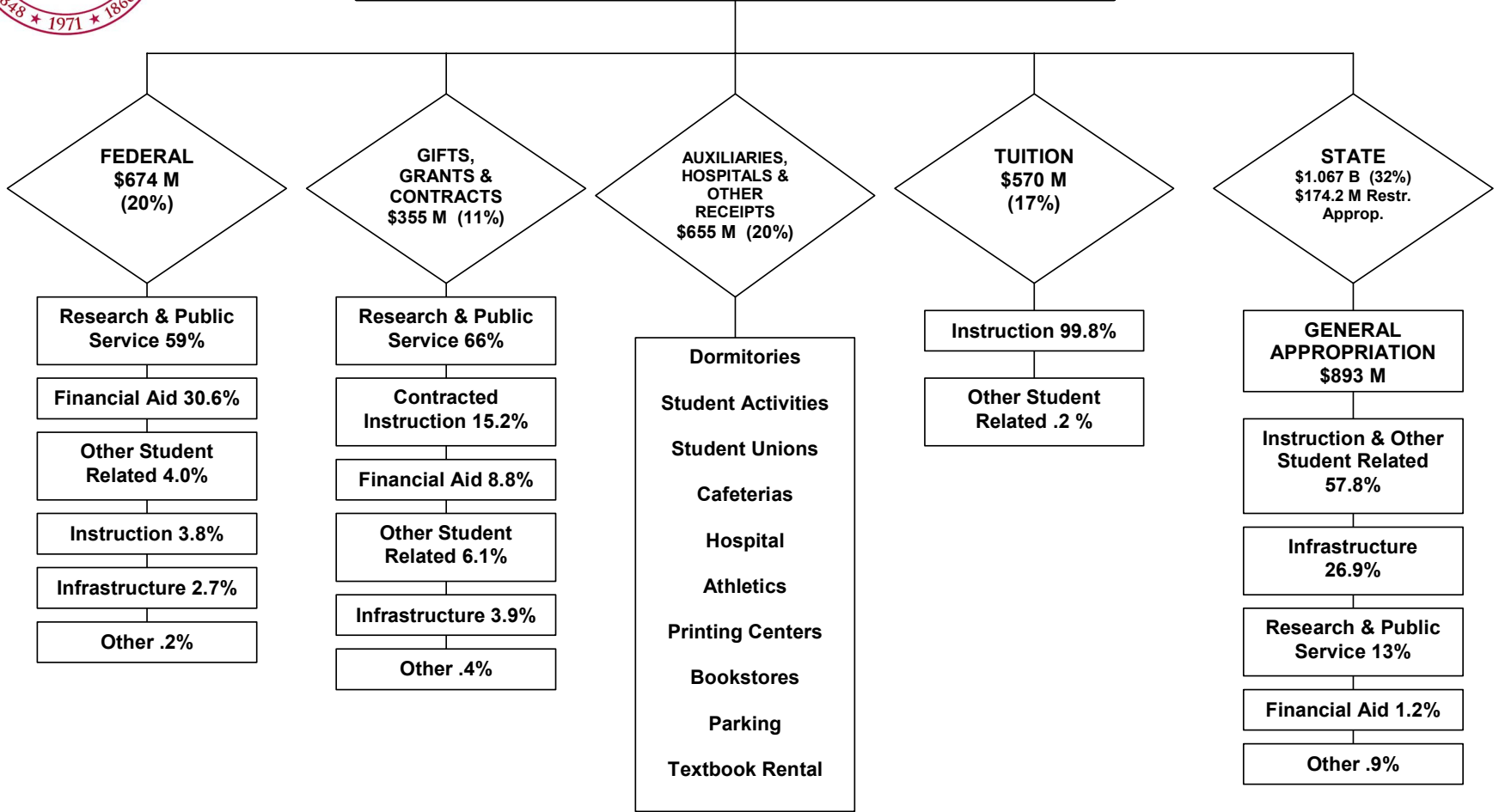


Figure 8

- (1) Other Student Related = Student Services and Academic Support
- (2) Infrastructure = Physical Plant, Institutional Support
- (3) Other = Farm Operations, Hospital, and Auxiliaries



The University of Wisconsin System

Building Wisconsin's Future