

University of Wisconsin System Academic Degree Program Array Planning, Review, and Management: 2013-14 Annual Report

Stephen H. Kolison Jr., Ph.D.

*Associate Vice President for
Academic, Faculty, and Global Programs*

February 5, 2015

Introduction

- Unlike previous annual reports, this report has as its main focus the characteristics and dynamics of the academic degree array.
- It provides an assessment on the state of the array and how it is managed.
- It looks forward to the future.

Some Key Questions

- What are the extent and characteristics of the UW System's academic degree array?
- What is the availability of STEM, Business, and Health-related programs relative to other programs?

Some Key Questions

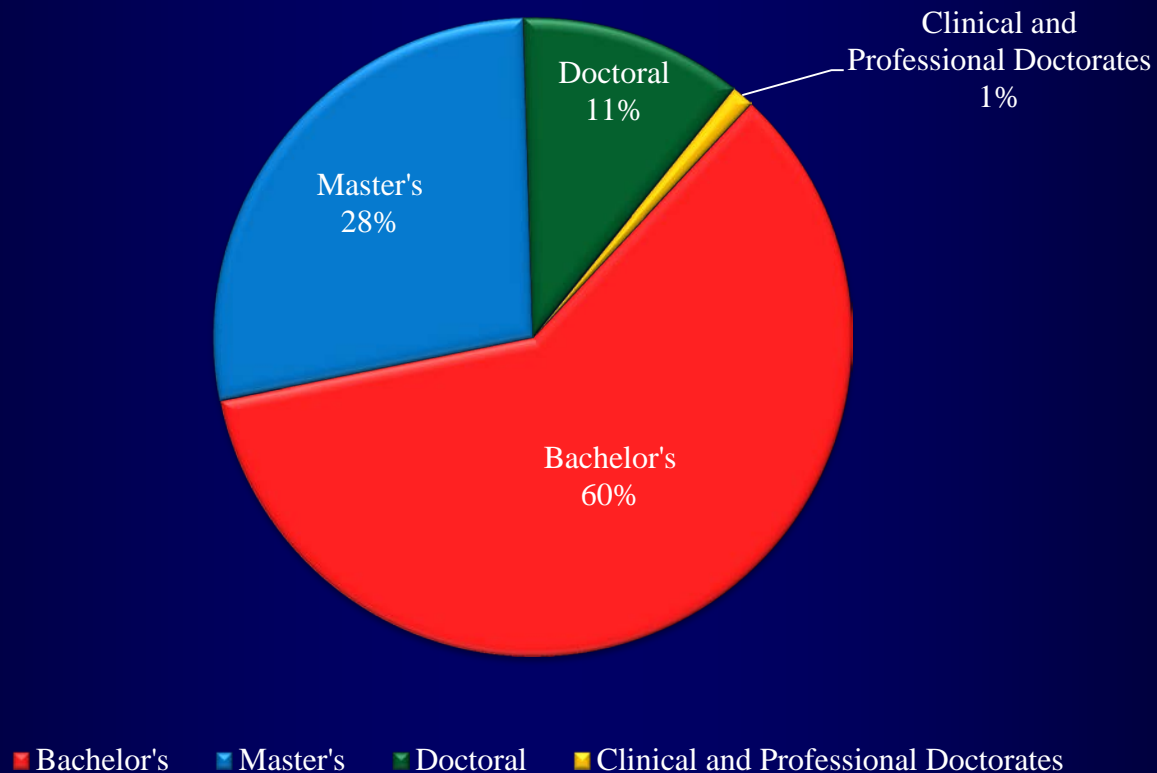
- What are the trends in the array?
- How does the availability of undergraduate degree programs today compare to their availability at the time of merger?
- Should the expansion of the array be encouraged and supported at this time?

OVERVIEW OF THE UWS ACADEMIC DEGREE ARRAY

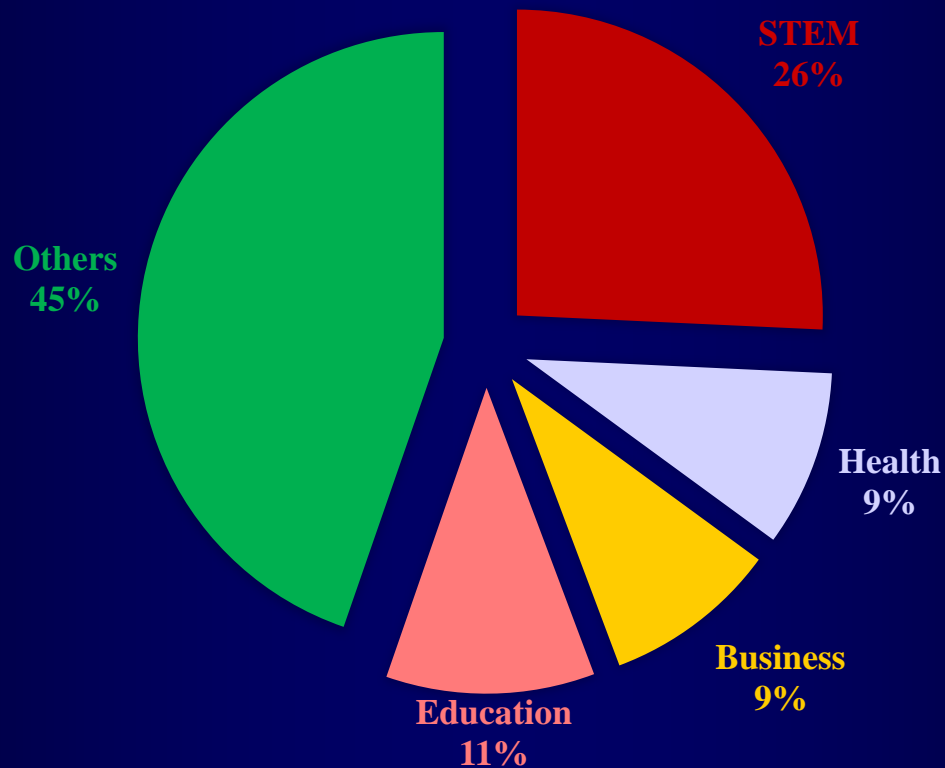
Current Array

Degrees	Number
Associate	
Bachelor's	733
Master's	339
Professional/Clinical Doctorates	14
Ph.D. Degrees	138
Total (excluding Associate Degrees)	1,224

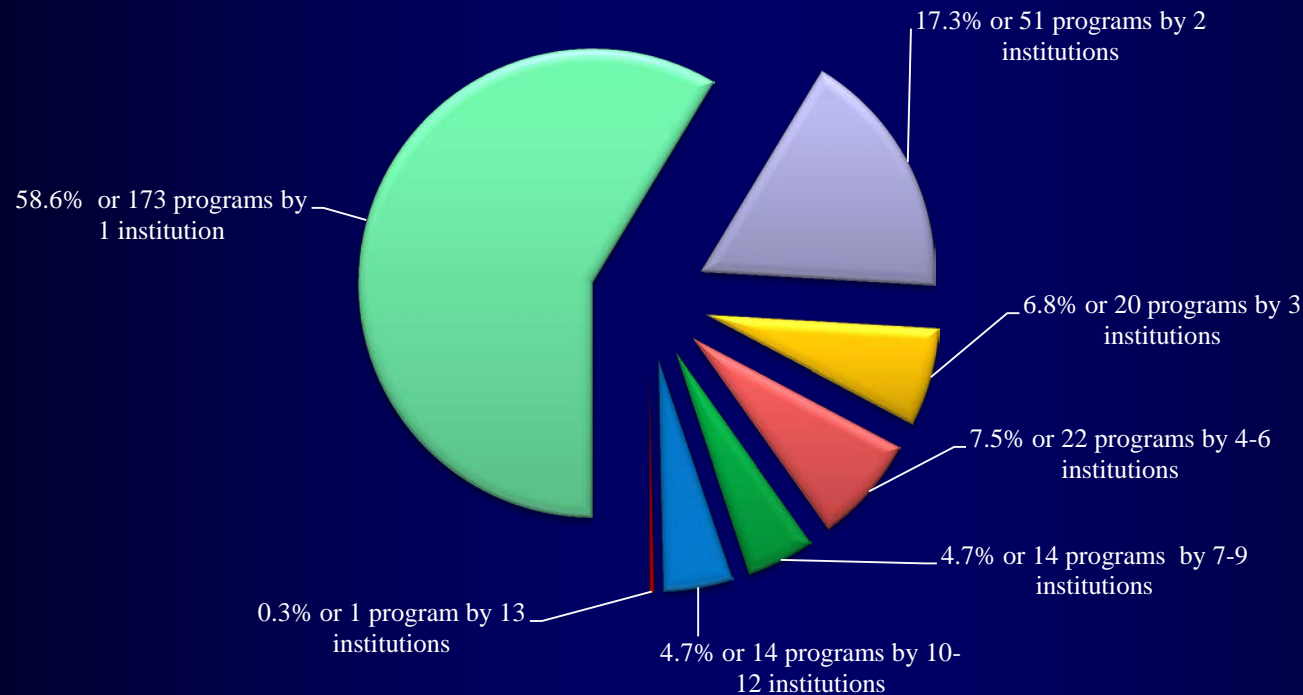
Current Distribution of the Array by Degree Type



STEM as a Share of Total Array



Frequency of Bachelor's Degree Programs Offered in 2013-14



Program Planning Activities in 2013-14

Pre-Authorizations	21
Authorizations	16
Implementations	13
Eliminations	5
Suspensions	0

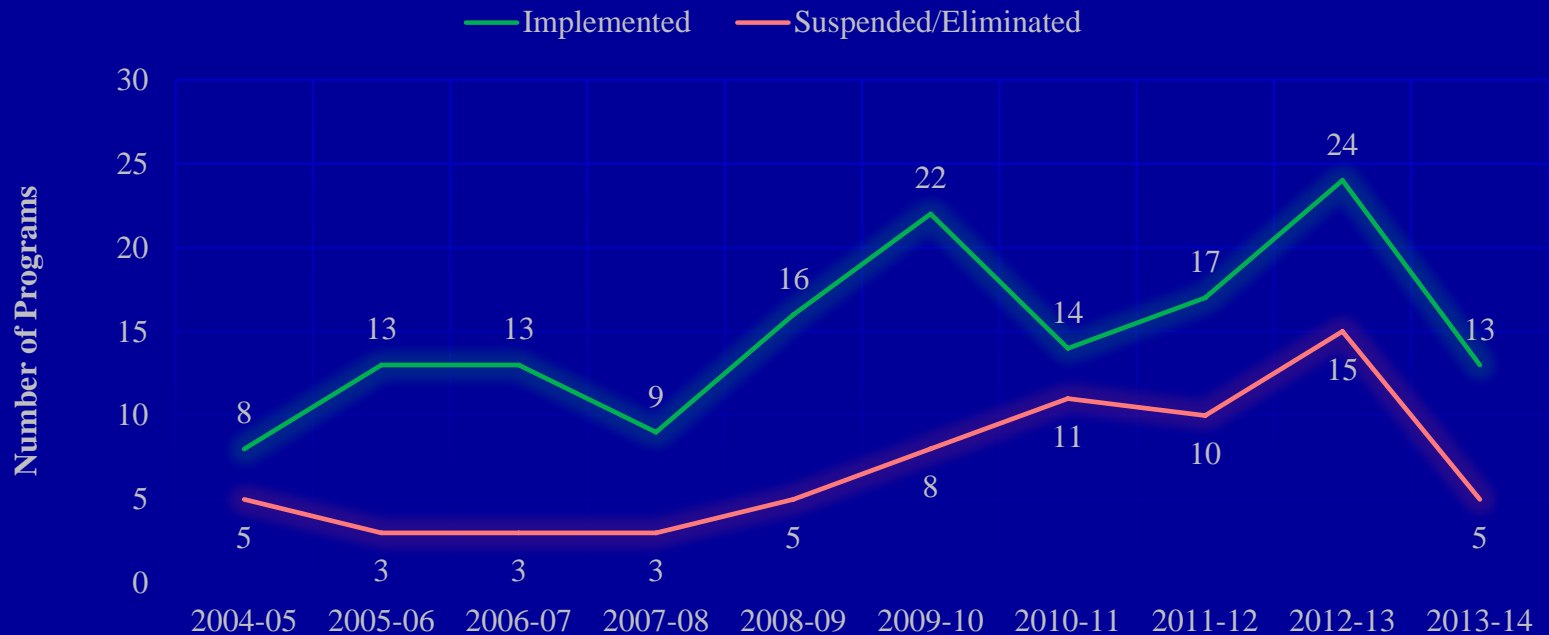
DYNAMICS OF THE ARRAY

Program Planning Activities	Years					Totals
	09-10	10-11	11-12	12-13	13-14	
Pre-Authorizations	15	19	13	14	21	82
Authorizations	14	16	15	18	16	79
Implementations	22	14	17	24	13	90
Eliminations	3	8	6	9	5	31
Suspensions	5	3	4	6	0	18

Program Planning Activities in 2004-14

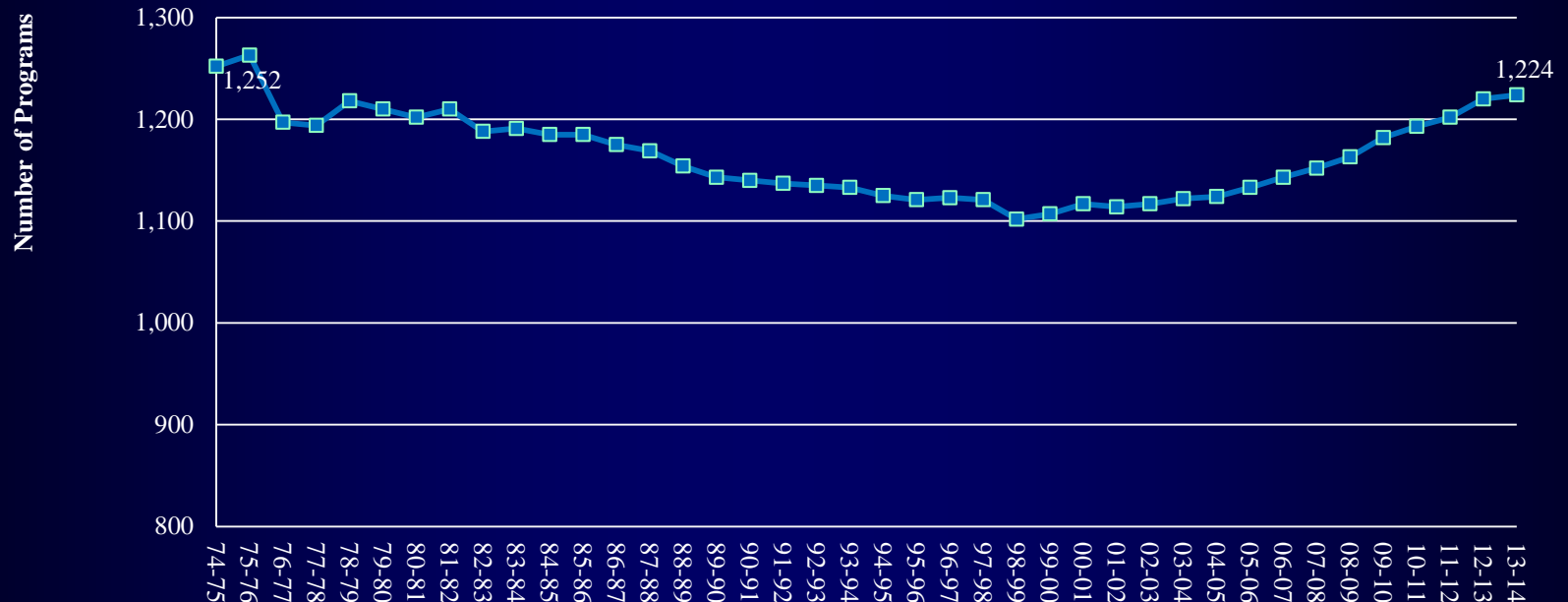
Additions	149
Eliminations	50
Suspensions	18

Additions and Eliminations of Programs

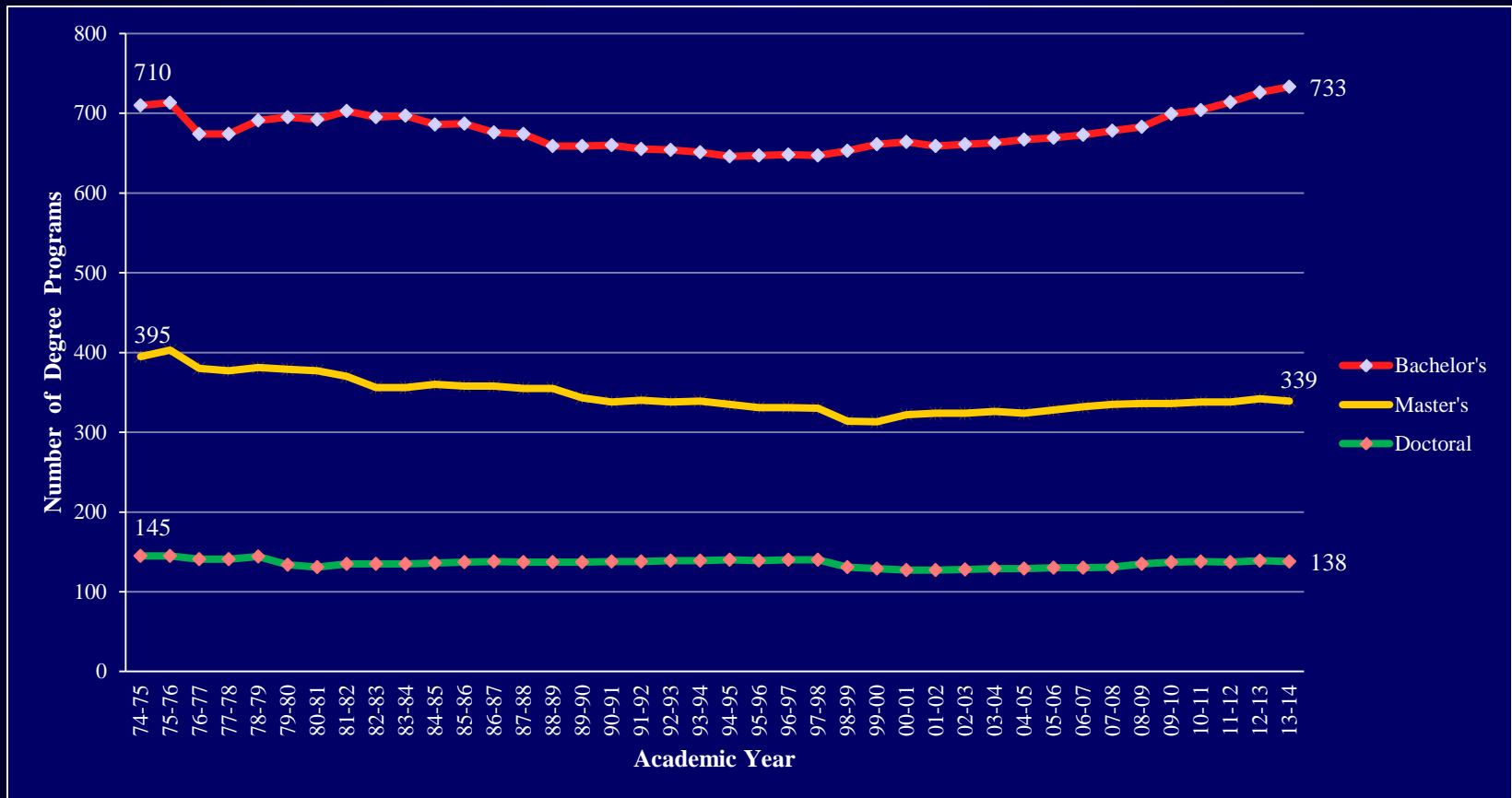


TRENDS IN THE ARRAY

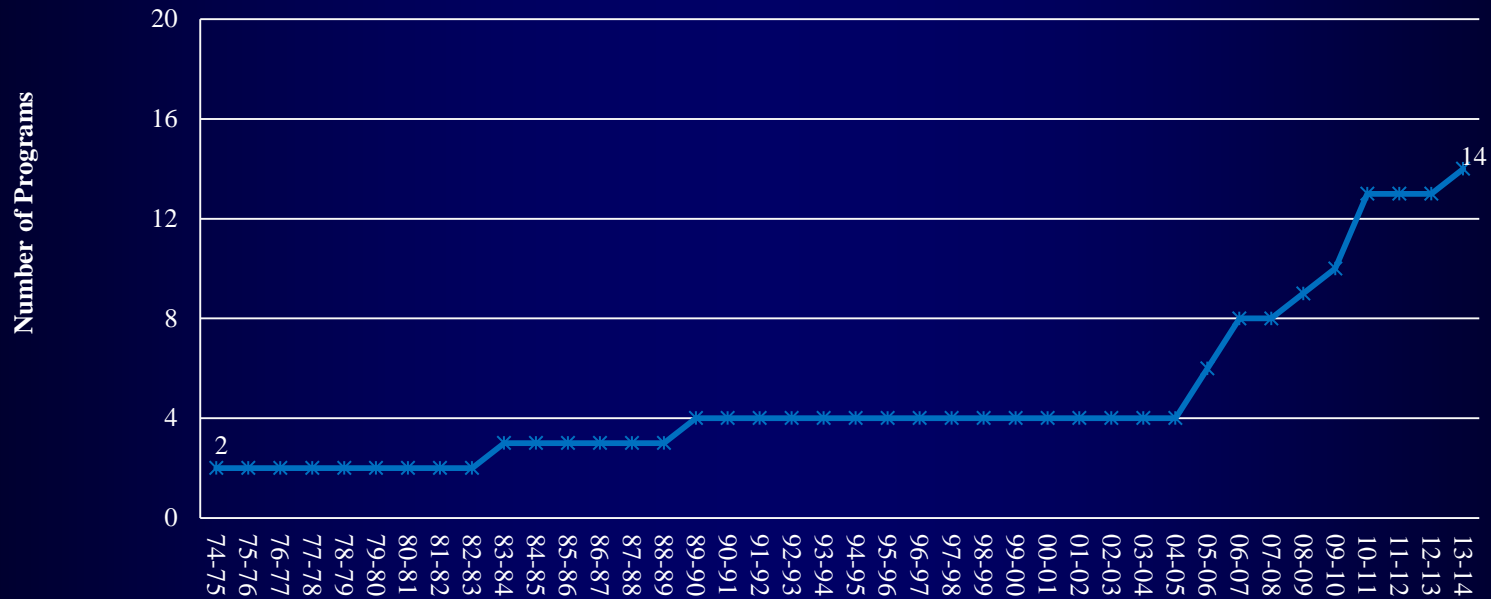
Trend in the Number of Academic Degree Programs 1974-2014



Trends in Bachelor's, Master's and Doctoral Degree Programs 1974-2014

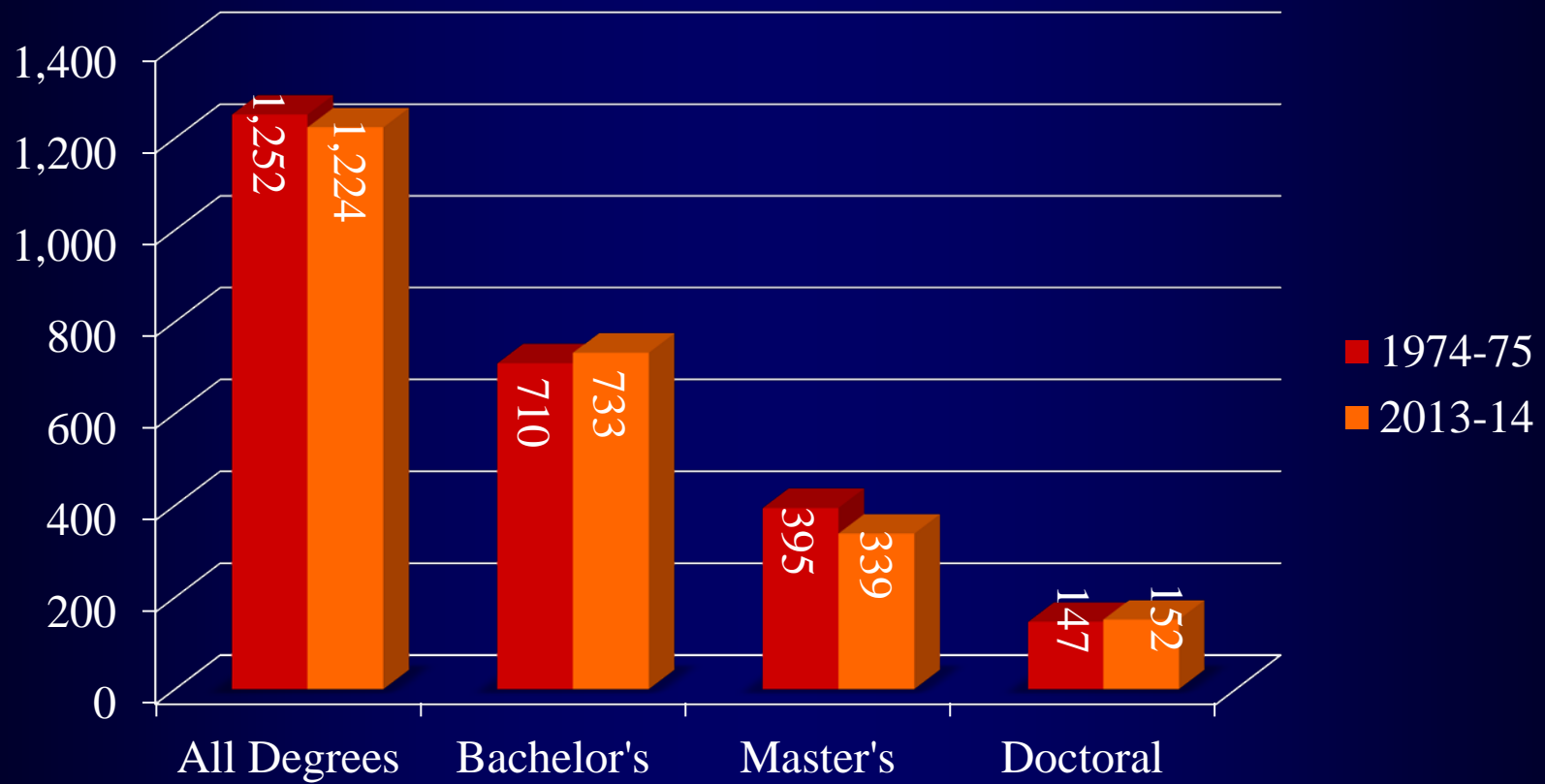


Trend in the Number of Clinical/ Professional Doctorate Degree Programs 1974-2014



AVAILABILITY OF ACADEMIC DEGREE PROGRAMS TODAY RELATIVE TO THE TIME OF MERGER

Change in Number of Programs (from about the time of merger)



Availability of Undergraduate Degree Programs in the UW System

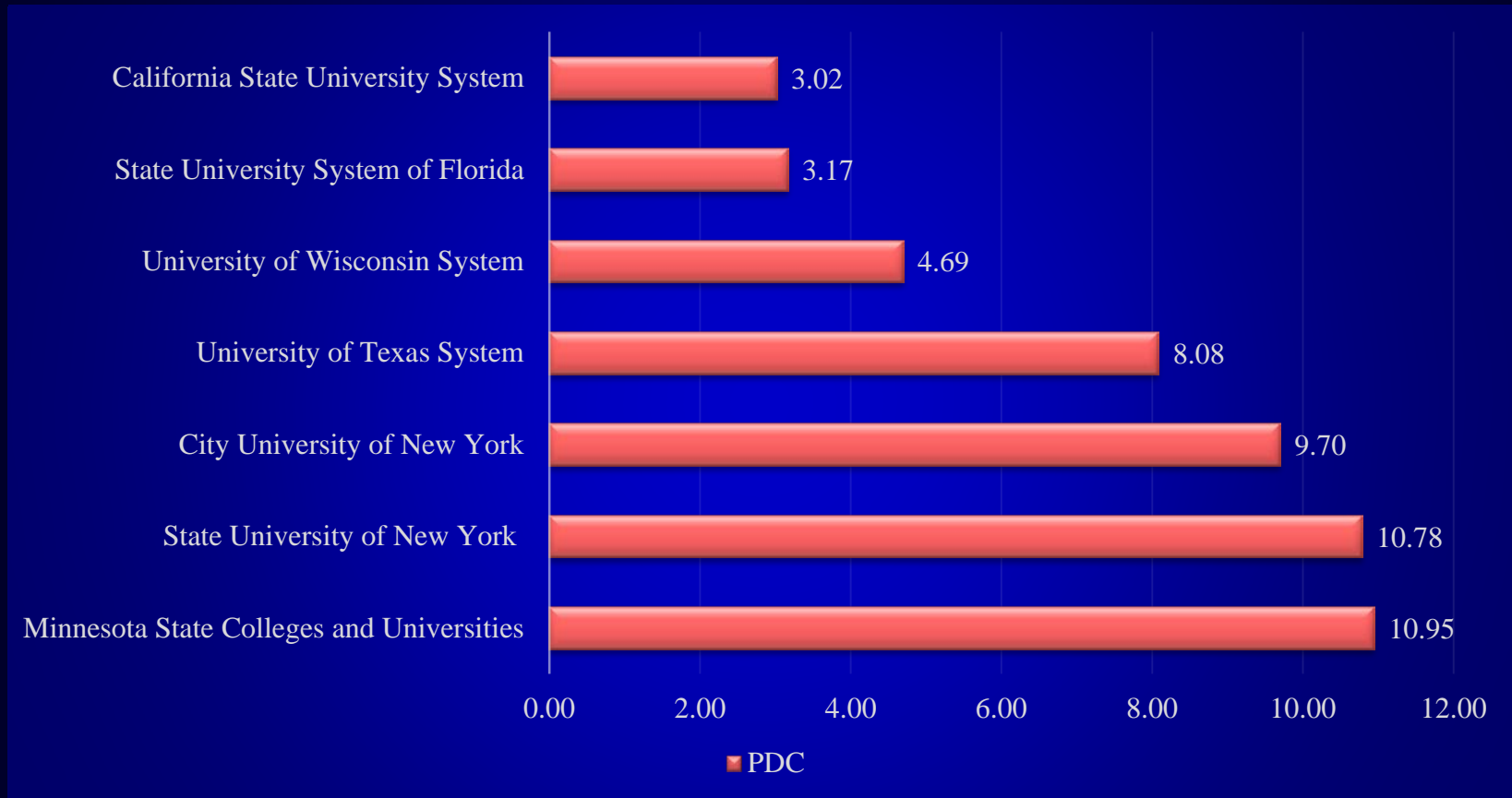
Year	Undergraduate Students	Undergraduate Degree Programs	Program Density Coefficient
1974-75	116,455	710	6.10
2013-14	156,162	733	4.69

Availability of Undergraduate Degree Programs in Selected Systems

Systems of Higher Education	Total Enrollment	Undergraduate		
		Enrollment	Programs	PDC
State University of New York	468,000	418,917	4,517	10.78
California State University System	415,000	383,118	1,156	3.02
State University System of Florida	320,266	228,078	722	3.17
Minnesota State Colleges and Universities	277,000	144,524	1,582	10.95
City University of New York	270,000	180,473	1,750	9.70
University of Texas System	211,000	217,382	1,757	8.08
University of Wisconsin System	179,828	156,162	733	4.69



Undergraduate Program Density



Takeaway I

- The academic program array size has varied over the history of the System. However, the program array size is smaller today (with more students) than it was in 1974-75 (with fewer students).

Takeaway II

- The UW institutions, in collaboration with UWSA and the Board of Regents, have actively managed their academic programs and have added, eliminated, and suspended large numbers of programs since the merger.

Key Takeaway (III)

- With 60 percent of our degree program array devoted to undergraduate education, we are fulfilling a key expectation to maintain quality undergraduate programs at each institution in the basic arts, humanities, social sciences, and sciences.

Takeaways (IV – V)

- STEM programs account for more than a quarter of the entire academic degree array.
- Business and Health-related each account for 9%.

Takeaway (VI)

- Overall, UW System Administration believes that the UW System academic program array has been efficiently managed. The processes that lead to program additions and program eliminations have kept the overall number of academic degree programs at a level below the level at merger.

LOOKING TO FORWARD TO THE FUTURE

As knowledge expands and as new fields of study emerge, the UW System needs to ensure that its academic degree program management allows for new degree programs to serve new areas of demand in the State of Wisconsin and beyond.

- Some areas to consider for future growth/enhancement in the array include:
 - Applied mathematics/ statistics/ predictive analytics/bioinformatics;
 - Biomedical engineering;
 - Cyber security;
 - Game theory/software;
 - Nursing – instructors and practitioners;
 - Software engineering; and
 - Virology

Special Thanks

- Laura Anderson
- Carmen Faymonville
- Craig Morris
- Dave J. Ward
- Yufeng Duan
- Ann Fisher
- Diane Treis Rusk
- The UW Provosts and their staff

Sources of data used in presentation: UW Institutions; OPAR; AFGP; NASH; Other Systems of Higher Education



Thank You