

---

Instructional Analysis Information System (IAIS)

# Section Size Analysis by Section Level

By UWSA Office of Information Services and  
Office of Policy Analysis and Research



This manual was produced using *Doc-To-Help*®, by WexTech Systems, Inc.

**WEXTECH**

WexTech Systems, Inc.  
310 Madison Avenue, Suite 905  
New York, NY 10017  
1-800-WEXTECH  
(212) 949-9595  
Fax: (212) 949-4007

# Contents

<b>IAIS - Section Size Analysis by Section Level</b>	<b>3</b>
Overview.....	3
General Rules and Guidelines.....	3
Instructors.....	3
Sections.....	3
Summarizing Data.....	1
Detail Data Elements Needed:.....	1
Levels of Summarization.....	3
Input Parameters Used By The Report.....	4
Report Levels.....	4
Report Layout.....	1
Report Definitions.....	1
1. Average Section Size - row.....	1
2. Average Section Size total - cell.....	1
3. Average Undergraduate Section Size - row.....	1
4. Class Section Size - column.....	1
5. Class Section Size Total - row.....	1
6. Department.....	1
7. Department Name.....	<b>Error! Bookmark not defined.</b>
8. Department Summary.....	<b>Error! Bookmark not defined.</b>
9. Division.....	<b>Error! Bookmark not defined.</b>
10. Division Name.....	<b>Error! Bookmark not defined.</b>
11. Instructor Type - Academic Staff - column.....	1
12. Instructor Type - Graduate Assistants - column.....	2
13. Instructor Type - Legal Faculty - column.....	2
14. Instructor Type - Total - column.....	2
15. Percent Sections by Level - row.....	2
16. Section Level.....	2
17. Section Level - LD - column.....	3
18. Section Level - GD - column.....	3
19. Section Level - Percent - column.....	3
20. Section Level - Total - column.....	3
21. Section Level - UD - column.....	3
22. Section Size.....	4
23. Term.....	4
24. Type of instruction - page.....	4
25. Unit.....	5
26. Unit Name.....	5
27. Year.....	5
How.....	5
How a section's Instructor Type is determined.....	5
How an Instructor Type is derived from a Title Code.....	6

How to determine the Instructor Type for a Section with multiple Instructor - Human Resource matches .....	6
How to Determine Section Size .....	7

<b>Glossary of Terms</b>	<b>9</b>
--------------------------	----------

<b>Index</b>	<b>15</b>
--------------	-----------

# IAIS - Section Size Analysis by Section Level

---

## Overview

The Section Size Analysis by Section Level report lists the number of sections within a section size range, with the size being determined by the number of students in a section. The section size ranges are further broken down by the designated section level and the instructor type of the major instructor for that section. The frequency of sections within a section size range is grouped by type of instruction within UDD (Unit, Division, Department), with each UDD / type of instruction combination being printed on a separate page. The report is also summarized by unit and cluster level. This report is normally created for the fall term of the current year.

---

## General Rules and Guidelines

### Instructors

Instructors used for this report are employees who are associated with at least one course section. An attempt is made to match the instructor information on the CDR with the unclassified appointments on the Human Resource database (HRIS).

### Sections

A section is used for this report if *at least one student is enrolled in the section* and the section is *not*:

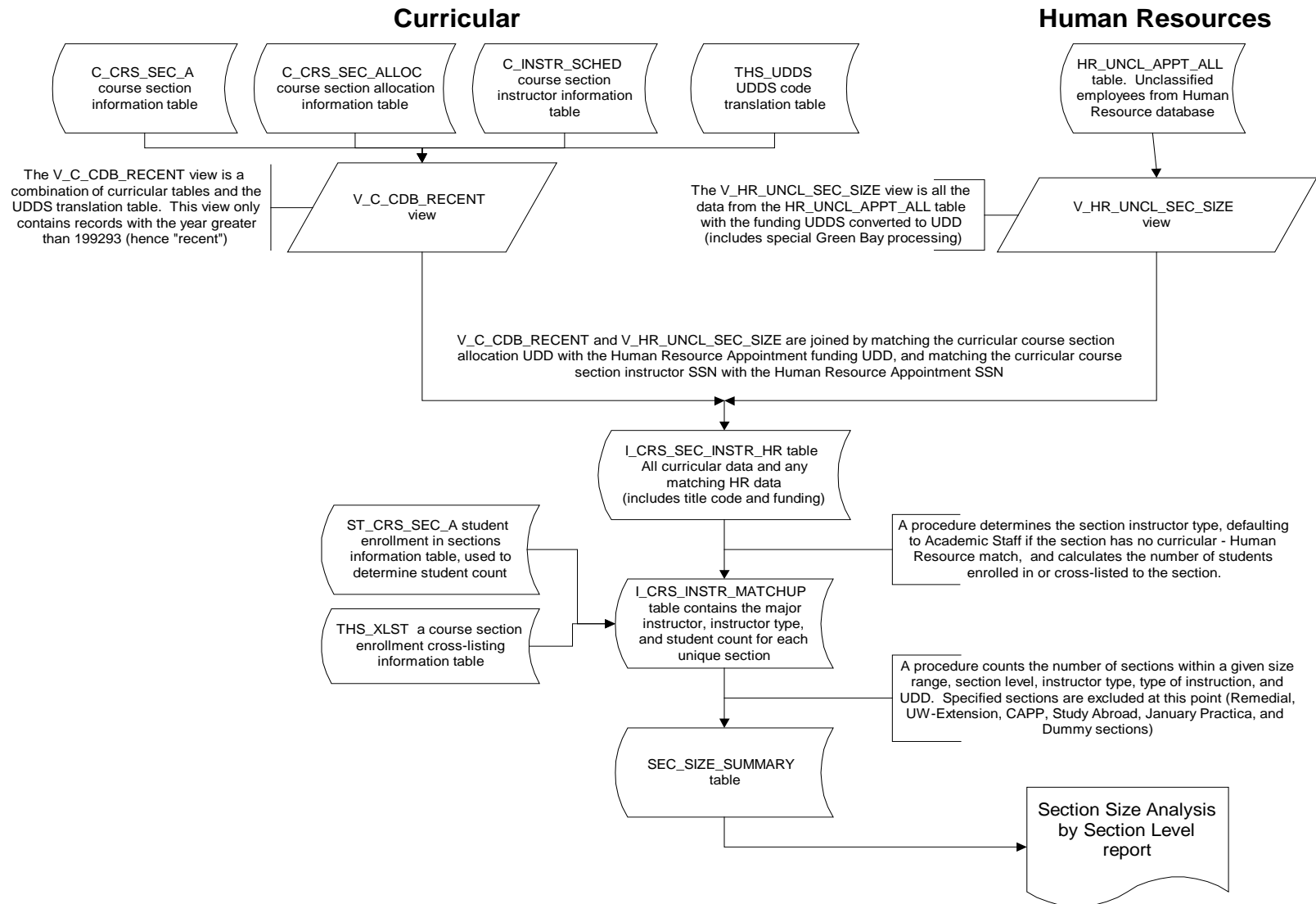
1. A January Practica section
2. A Study Abroad section
3. A UW Extension Credit Program section
4. A Cooperative Advanced Placement Program section
5. A Remedial section
6. An Unidentified section

#### 7. A Dummy section

If a section is cross-listed to an enrollment carrying section, the students in the cross-listed section are added to the students in the enrollment carrying section. The total is considered one section and reported under the enrollment carrying section.

# Summarizing Data

The following diagram is a high level overview of how the curricular, student, and Human Resource data are summarized to create the Section Size Analysis by Section Level report.



G:\oia\iais\docs\secsizsl.vsd  
H:\iais\docs\secsizsl.pcx





## Detail Data Elements Needed:

Table: UWSA.C\_CRS\_SEC

YEAR  
TERM  
UNIT  
DIVISION  
CAC  
COURSE  
SECTION  
XLIST\_IND  
SEC\_LEVEL  
INSTR\_TYPE (type of instruction or the report)

Table: UWSA.C\_CRS\_SEC\_ALLOC

CRS\_ALLOC\_DDS

Table: UWSA.C\_CRS\_INSTR\_SCHED

INSTRUCTOR\_SSN  
PRO\_EFF\_CRED\_ENRL

Table: UWSA.THS\_XLST

UNIT  
DIVISION  
CAC  
COURSE  
SECTION  
ENRL\_CARRY\_UNIT  
ENRL\_CARRY\_DIVISION  
ENRL\_CARRY\_CAC  
ENRL\_CARRY\_COURSE  
ENRL\_CARRY\_SECTION

Table: UWSA.HR\_UNCL\_APPT

INSTRUCTOR\_SSN  
APPT\_FUNDING\_UDD  
FUND  
ACTIVITY  
TITLE\_CODE

Table: UWSA.THIS\_UDDS

UDDS\_NAME

UDDS\_ABBREV

Table: UWSA.ST\_CRSSEC

Count

The above data elements are used by stored procedure

UWSIASU.P\_MATCH\_COURSE\_WITH\_INSTRUCTOR

to create table I\_CRS\_INSTR\_MATCHUP

YEAR

TERM

UNIT

UDDS\_NAME

UDDS\_ABBREV

DIVISION

UDD

CAC

COURSE

SECTION

SEC\_LEVEL

INSTR\_TYPE (type of instruction)

INSTRUCTOR\_TYPE (derived from title\_code)

STUDENT\_COUNT (Count from uwsa.st\_crssec )

INSTRUCTOR\_SSN

TITLE\_CODE

The above data elements are used by stored procedure

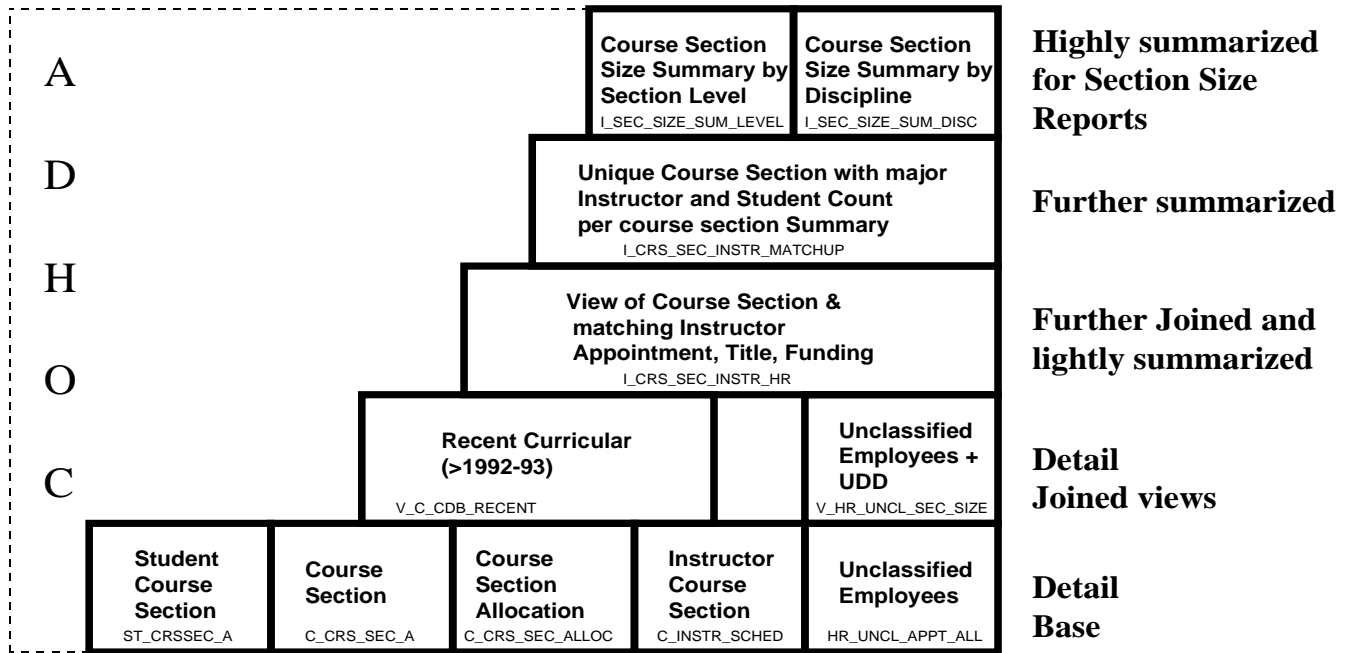
UWSIASU.P\_SUMMERIZE\_SECTION\_SIZE

to create the table:

UWSIAS.SEC\_SIZE\_SUMMARY, a table created solely for input to the  
Section Size Analysis by Section Level reports.

## Levels of Summarization

### Section Size Analysis Data Views



g:\ois\iaais\docs\secszdat.ppt

---

## Input Parameters Used By The Report

To view a report, run the IAIS report application, select the type of report you would like to see, and select the report you would like to view either by double clicking on the name of the report or by clicking on the 'View Report' button while the report name is highlighted. When the report is started a pop-up window will be displayed asking for the year and possibly the unit, division, or department (depending on the report selected) for which the data for the report is to reflect.

**Year:** The year must be entered as a six-digit number (example: 199495).

**Unit:** The unit must be entered as a one character unit code with no quote marks (example: A).

**Division:** The division must be entered as a three character code with no quote marks (example: A07).

**Department:** The department must be entered as a five character code with no quote marks (example: A0720).

---

## Report Levels

The Section Size Analysis by Section Level has been broken down into several different reports with different levels of summarization.

### **Cluster Totals - Instructional Category**

Section Size Analysis totaled by instructional category (group or individual) within cluster. This report does not include divisions A53 (Medical School) and A87 (School of Veterinary Medicine) at UW-Madison. Needs input parameter year.

### **Cluster Totals - Type of Instruction**

Section Size Analysis totaled by type of instruction within cluster. This report does not include divisions A53 (Medical School) and A87 (School of Veterinary Medicine) at UW-Madison. Needs input parameter year.

### **Department Totals - Instructional Category**

Section Size Analysis totaled by instructional category (group or individual) within UDD. Needs input parameter year.

### **Department Totals - Instructional Category - for a Single Department**

Section Size Analysis totaled by instructional category (group or individual) within UDD for a specific department. Needs input parameters year and department.

### **Department Totals - Instructional Category - for a Single Division**

Section Size Analysis totaled by instructional category (group or individual) within UD for a specific division. Needs input parameters year and division.

### **Department Totals -Instructional Category - for a Single Unit**

Section Size Analysis totaled by instructional category (group or individual) within UDD for a specific unit. Needs input parameters year and unit.

**Department Totals - Type of Instruction**

Section Size Analysis totaled by type of instruction within UDD. Needs input parameter year.

**Department Totals - Type of Instruction - for a Single Department**

Section Size Analysis totaled by type of instruction within UDD for a specific department. Needs input parameters year and department.

**Department Totals - Type of Instruction - for a Single Division**

Section Size Analysis totaled by type of instruction within UDD for a specific division. Needs input parameters year and division.

**Department Totals - Type of Instruction - for a Single Unit**

Section Size Analysis totaled by type of instruction within UDD for a specific unit. Needs input parameters year and unit.

**Division Totals - Instructional Category**

Section Size Analysis totaled by instructional category (group or individual) within division. Needs input parameter year.

**Division Totals -Instructional Category - for a Single Division**

Section Size Analysis totaled by instructional category (group or individual) within division for a specific division. Needs input parameters year and division.

**Division Totals -Instructional Category - for a Single Unit**

Section Size Analysis totaled by instructional category (group or individual) within division for a specific unit. Needs input parameters year and unit.

**Division Totals - Type of Instruction**

Section Size Analysis totaled by type of instruction within division. Needs input parameter year.

**Division Totals - Type of Instruction - for a Single Division**

Section Size Analysis totaled by type of instruction within division for a specific division. Needs input parameters year and division.

**Division Totals - Type of Instruction - for a Single Unit**

Section Size Analysis totaled by type of instruction within division for a specific unit. Needs input parameters year and unit.

**Unit Totals - Type of Instruction**

Section Size Analysis totaled by type of instruction within unit. This report does not include divisions A53 (Medical School) and A87 (School of Veterinary Medicine) at UW-Madison. Needs input parameter year.

**Unit Totals - Type of Instruction - for a Single Unit**

Section Size Analysis totaled by type of instruction within unit for a specific unit. This report does not include divisions A53 (Medical School) and A87 (School of Veterinary Medicine) at UW-Madison. Needs input parameters year and unit.

### **Unit Totals -Instructional Category Totals**

Section Size Analysis totaled by instructional category (group or individual) within unit. This report does not include divisions A53 (Medical School) and A87 (School of Veterinary Medicine) at UW-Madison. Needs input parameter year.

### **Unit Totals -Instructional Category - for a Single Unit**

Section Size Analysis totaled by instructional category (group or individual) within division for a specific unit. This report does not include divisions A53 (Medical School) and A87 (School of Veterinary Medicine) at UW-Madison. Needs input parameters year and unit.

# Report Layout

The University of Wisconsin System  
Section Size Analysis by Discipline

2/19/99  
Page 1 of 12

Term 1, 1997-98

Unit Summary

All Types of Group Instruction

UNIVERSITY OF WISCONSIN - EAU CLAIRE

SOCIAL & BEHAVIORAL SCIENCES

SOCIAL & BEHAVIORAL SCIENCES

Class Section Size	Legal Faculty					Graduate Assistants					Academic Staff					TOTAL					
	LD	UD	GD	Total	%	LD	UD	GD	Total	%	LD	UD	GD	Total	%	LD	UD	GD	Total	%	
001-009	8	17	11	36	7.3%	0	0	0	0	0.0%	0	6	1	7	4.4%	8	23	12	43	6.6%	
010-019	33	46	6	85	17.3%	0	0	0	0	0.0%	13	10	1	24	15.2%	46	56	7	109	16.8%	
020-029	48	82	1	131	26.7%	0	0	0	0	0.0%	12	18	0	30	19.0%	60	100	1	161	24.8%	
030-039	54	71	0	125	25.5%	0	0	0	0	0.0%	23	19	0	42	26.6%	77	90	0	167	25.7%	
040-049	33	18	0	51	10.4%	0	0	0	0	0.0%	11	10	0	21	13.3%	44	28	0	72	11.1%	
050-074	38	1	0	39	7.9%	0	0	0	0	0.0%	20	2	0	22	13.9%	58	3	0	61	9.4%	
075-099	6	2	0	8	1.6%	0	0	0	0	0.0%	4	0	0	4	2.5%	10	2	0	12	1.8%	
100-149	10	2	0	12	2.4%	0	0	0	0	0.0%	5	0	0	5	3.2%	15	2	0	17	2.6%	
150-199	3	0	0	3	0.6%	0	0	0	0	0.0%	1	0	0	1	0.6%	4	0	0	4	0.6%	
200+	1	0	0	1	0.2%	0	0	0	0	0.0%	2	0	0	2	1.3%	3	0	0	3	0.5%	
---	---	---	---	---	-----	---	---	---	---	-----	---	---	---	---	-----	---	---	---	---	---	-----
TOTAL	234	239	18	491	100.0%	0	0	0	0	0.0%	91	65	2	158	100.0%	325	304	20	649	100.0%	
% Sections by Level	47.7	48.7	3.7	100.0		0.0	0.0	0.0	0.0		57.6	41.1	1.3	100.0		50.1	46.8	3.1	100.0		
Average Section Size	41	27	11	33							47	28	11	39		43	27	11	35		
Average Undergrad Section Size		34										39					36				





---

# Report Definitions

## 1. Average Section Size - row

This row is the average number of students in a section within an instructor type and section level. (Example: the average number of students in Lower Division sections that are taught by Legal Faculty regardless of section size).

## 2. Average Section Size total - cell

This cell is the average number of students in a section within an instructor type, regardless of section level. (Example: the average number of students in sections that are taught by Legal Faculty regardless of section size).

## 3. Average Undergraduate Section Size - row

This row is the average number of students in undergraduate sections (section levels LD and UD only) within an instructor type. (Example: the average number of students in Lower and Upper Division sections that are taught by Legal Faculty regardless of section size).

## 4. Class Section Size - column

This is a column of row headers of section size ranges. The intersection of the section size heading (example: 001-009) with the instructor type and section level heading (example: Legal Faculty - LD) gives the number of sections that meet the specified criteria (example: the number of Lower Division sections with 001-009 students enrolled that are taught by Legal Faculty).

## 5. Class Section Size Total - row

This row is the total number of sections within an instructor type and section level. (Example: the total number of Lower Division sections that are taught by Legal Faculty regardless of section size).

## 6. Discipline

The code and name of the discipline associated with the totalled sections. The Discipline code for a section is taken from the CAC table.

## 7. Instructor Type - Academic Staff - column

Academic Staff is an instructor whose title\_code does not fall under the guidelines for Legal Faculty or Graduate Assistants, or a section without a matching Human Resource employee. In order for a section to be counted under Academic Staff it's major instructor must have a title\_code that is not Legal Faculty or Graduate

Assistant on an appointment, or no Human Resource match was found for that section. Academic Staff is the default instructor type.

Calculated in function UWSIASU.F\_DETERMINE\_INSTRUCTOR\_TYPE, which is called by procedure UWSIASU.MATCH\_COURSE\_WITH\_INSTRUCTOR

### 8. Instructor Type - Graduate Assistants - column

Graduate Assistant is an instructor whose title\_code begins with 'Y'. In order for a section to be counted under Graduate Assistants it's major instructor must have a title\_code beginning with 'Y' on an appointment.

Calculated in function UWSIASU.F\_DETERMINE\_INSTRUCTOR\_TYPE, which is called by procedure UWSIASU.MATCH\_COURSE\_WITH\_INSTRUCTOR

### 9. Instructor Type - Legal Faculty - column

Legal faculty is an instructor whose title\_code is C20NN, C30NN, C40NN, C50NN, or C60NN. In order for a section to be counted under Legal Faculty its major instructor must have one of the above title codes on an appointment .

Calculated in function UWSIASU.F\_DETERMINE\_INSTRUCTOR\_TYPE, which is called by procedure UWSIASU.MATCH\_COURSE\_WITH\_INSTRUCTOR

### 10. Instructor Type - Total - column

The total number of sections within a given section size range, regardless of the Instructor Type.

### 11. Percent Sections by Level - row

The ratio of the total number of sections in a given section level to the total number of sections within an instructor type (or Instructor Type - Total). Example: Under Legal Faculty there are 20 sections in the Lower Division (LD). There are a total of 50 sections under Legal Faculty. The percent for section level LD is 40% (20/50 \* 100).

The ratio of the total number of sections within a given section level and instructor type, regardless of the section level to the total number of sections within a given instructor type, regardless of the section level and section size.

### 12. Section Level

The section level is a designated code indicating the intended degree of complexity or the expected level of comprehension of the section. Sections in section level 1 are excluded from this report.

Section Level	Abbrev.	Description
1	--	Remedial *
2	LD	Lower Division
3	UD	Upper Division

4	GD	Graduate Division
5	GD	Graduate Division
6	GD	Graduate Division

\* Although section level 1 is defined as a remedial section, sections with a section level of 1 are not automatically excluded from this report. Only sections that are coded as remedial are excluded.

UWSA.C\_CRIS\_SEC.SEC\_LEVEL

### 13. Section Level - LD - column

The total number of sections within a given section size range with Section Level = 2, which is considered an undergraduate basic, or **Lower Division** section.

UWSA.C\_CRIS\_SEC.SEC\_LEVEL

### 14. Section Level - GD - column

The total number of sections within a given section size range with Section Level = 4, 5, or 6, which is considered **Graduate Division** sections.

UWSA.C\_CRIS\_SEC.SEC\_LEVEL

### 15. Section Level - Percent - column

The ratio of the total number of sections in a given size range to the total number of sections within an instructor type (or Instructor Type - Total).

Example: Under Legal Faculty there are 10 sections in the size range 001-009. There are a total of 50 sections under Legal Faculty. The percent for the size range 001-009 is 20% ( $10/50 * 100$ )

Another way to describe this is the ratio of the total number of sections within a given section size range and instructor type, regardless of the section level (Section Level - Total) to the total number of sections within a given instructor type, regardless of the section level and section size.

### 16. Section Level - Total - column

The total number of sections within a given section size range and instructor type (or Instructor Type - Total), regardless of the section level.

### 17. Section Level - UD - column

The total number of sections within a given section size range with Section Level = 3, which is considered an undergraduate advanced, or **Upper Division** section.

UWSA.C\_CRIS\_SEC.SEC\_LEVEL

## 18. Section Size

Total number of students in an enrollment carrying section, plus all students in sections cross-listed to the given section. The number of students in a section are counted according to the following rules:

1. If the given section is not cross-listed to an enrollment carrying section, and no other sections are cross-listed to this section, the size is the count of students enrolled in the section.
2. If the given section is cross-listed to an enrollment carrying section the students enrolled in the given section are counted as part of the enrollment carrying section, and the size of the given section is zero.
3. If the given section is an enrollment carrying section with other section(s) cross-listed to it, the students enrolled in the cross-listed section(s) are counted as being enrolled in the given section.

The section size is calculated in function UWSIASU.F\_GET\_STUDENT\_COUNT, which is called by procedure UWSIASU.MATCH\_COURSE\_WITH\_INSTRUCTOR

## 19. Summary Level

The level of summarization for this report, either unit or cluster.

## 20. Term

The semester for which this report is generated. The report is normally generated for Term 1 (fall semester) only.

Term	Description
S	Summer
1	Fall
W	Winter
2	Spring

UWSA.C\_CRS\_SEC.TERM

## 21. Type of instruction - page

The type of instruction given to a section, taken from the course section table.

Type of Instruction	Description	Instructional Category
C	Lecture	Group
D	Discussion	Group
E	Extended Degree	Individualized
F	Field Experience	Individualized

I	Independent/Individualized	Individualized
S	Seminar	Group
L	Lab	Group

UWSA.C\_CRS\_SEC.INSTR\_TYPE

## 22. Unit

The one character code indicating one of the fourteen University of Wisconsin institutions.

## 23. Unit Name

The name for the highest level (unit) of the course section allocation UDD for the fall term of the current year.

Coding:

Join the UDDS translation table with the section summary table:

```
SELECT UWSA.THIS_UDDS.UDDS_ABBREV FROM UWSA.THIS_UDDS
WHERE UWSA.THIS_UDDS.UDDS_CODE =
UWSIAS.SEC_SIZE_SUMMARY.UNIT
```

## 24. Year

The six digit instructional year for which this report is generated. Example: 199495.

UWSA.C\_CRS\_SEC.YEAR

---

# How

## How a section's Instructor Type is determined

Each section included in this report must have an associated instructor type. An attempt is made to match a section's major instructor to an instructor on the Human Resource database. Match the course section allocation UDD with the Human Resource's Funding\_UDD and match the section's instructor\_SSN with the Human Resource SSN. Use the following rules to determine the instructor type:

1. If no match is found the Instructor Type defaults to 'AS' (academic staff).
2. If only one match is found the Instructor Type is derived from the instructor's Title\_Code. For additional information see "How an Instructor Type is derived from a Title Code".

3. If more than one match is found a single Instructor Type is determined by using an algorithm. For additional information see “How to determine the Instructor Type for a Section with multiple Instructor - Human Resource matches”.

## How an Instructor Type is derived from a Title Code

If an instructor’s Title\_Code is C20NN, C30NN, C40NN, C50NN, or C60NN then the Instructor Type is Legal Faculty. If an instructor’s Title\_Code starts with Y then the Instructor Type is Graduate Assistant. If the Title\_Code is anything else then the Instructor Type is Academic Staff. Instructor Type is ranked, highest to lowest, as Legal Faculty, Graduate Assistant, and Academic Staff.

Title Code	Instructor Type
C20NN, C30NN, C40NN, C50NN, C60NN	Legal Faculty
Starts with 'Y'	Graduate Assistant
Any other title code	Academic Staff

## How to determine the Instructor Type for a Section with multiple Instructor - Human Resource matches

When calculating enrollment in a section each section is counted only once, and listed in the column under its primary instructor's Instructor Type. Some sections are taught by more than one instructor, and the instructors may belong to different Instructor Types. The following steps are used to determine which instructor to match with a section.

The steps for determining which instructor to match with a primary or dependent section are listed in order of importance. Once a match is found, disregard the subsequent steps (for example, if a match is found using step # 2, disregard steps 3 & 4).

1. IF only one Human Resource match\* is found use that instructor's human resource data regardless of the type of funding, prorated effort for credits and enrollments, and title code.
2. IF more than one Human Resource match\* is found, use the match with the Human Resource funding UDD that matches the course section allocation UDD.
3. IF more than one Human Resource match\* is found with a matching UDD, use the match with the highest prorated effort for credits and enrollments regardless of the type of funding and title code.
4. IF more than one Human Resource match\* is found with a matching UDD and equal prorated effort for credits and enrollments, or prorated effort for credits and enrollments is zero for all instructors of the

section, use the match with state instructional funding (fund + activity) regardless of title code.

5. IF more than one Human Resource match\* is found with equal prorated effort for credits and enrollments, or prorated effort for credits and enrollments is zero for all instructors of the section, and all are funded with state instructional funds , use the match with the highest ranking title code.

\* A match means a section's instructor has an SSN matches an SSN in the Human Resources database.

## **How to Determine Section Size**

Section size is determined by counting the number of official students that are enrolled in a section. If a section is an enrollment carrying section with other sections cross-listed to it, all of the sections are considered as one section and the total enrollment for all sections is reported under the enrollment carrying section's UDD.





# Glossary of Terms

## Activity

From the Human Resources database, the funding activity identifies the purpose for which money is being spent or budgeted. Activity 2 is instruction.

## Appointment

An appointment is the association between a person providing services and a position at UW System based on statutes and appropriate personnel policies and procedures. Only one person is ever associated with a specific appointment at one time, but a person may hold more than one appointment.

## Cluster

A way of grouping UW System institutions. UW-Madison and UW-Milwaukee are in the Doctoral Cluster. Other UW four year institutions are in the Comprehensive Cluster. Campuses in the UW Colleges are grouped in the UW Colleges Cluster.

## Cooperative Advanced Placement Program

CAPP - Sections taught in a Wisconsin high school by a university approved high school teacher.

## Course Section Allocation

The UDDS of a section which must at least partially support the salary of the instructor(s) teaching the section.

## Cross-listed

A section with an 'X' in the xlist\_indicator field in the v\_c\_crs\_sec view. A cross-listed section is tied to an enrollment carrying section. The enrollment carrying section is reported as the only section, with the total number of student enrollments reported under this single section.

## **Department**

A two character code that indicates the level of organization immediately under that of Division. Generally it is an academic or administrative area.

## **Division**

A two character code that indicates the level of organization immediately under that of Unit. It is generally a school/college, campus at UW Colleges, or major administrative or program area.

## **Dummy Section**

A section that has a section number of 'XXX'. Also called an Unidentified Section.

## **Enrollment**

The number of official students registered in a course section. An official student is counted once for each section in which he/she is registered.

## **Enrollment Carrying**

A section with an 'E' in the xlist\_indicator field in the v\_c\_crs\_sec view. An enrollment carrying section can be tied to a cross-listed section. If it is, the enrollment carrying section is considered the only section, with the total number of students enrolled in the cross-listed sections included in this enrollment carrying section.

## **Group**

Group instruction is a teaching method where by a group of students normally meet with their instructor(s) in a specified time and place. Sections with a Type of Instruction of 'C' (lecture), 'D' (discussion), 'L' (laboratory), and 'S' (seminar) are considered group instruction type sections.

## **Individual**

Individual Instruction includes sections that are usually determined by the span of supervision of a specific instructor rather than the meeting time and place, or students taking individual topics with an instructor. Sections with a type of instruction of 'E' (extended degree), 'F' (field experience), and 'I' (independent/individualized) are considered individual instruction type sections.

## **Instructional Category**

An instructional category is a way to categorize a section's type of instruction as either group instruction or individual instruction.

## Instructional Funding

Instructional funding is money funded by a GPR (General Program Revenue) fund with an activity of 2. The funds used for budgeting instructional activity can change from year to year.

## Instructor Type

The appointment type of instructor for a section, derived from the title code of the appointment.

Title Code	Instructor Type
C20NN, C30NN, C40NN, C50NN, C60NN	Legal Faculty
Starts with 'Y'	Graduate Assistant
Any other title code	Academic Staff

## January Practica

Short courses offered in January at UW-Green Bay. As of 1995-96 these courses are no longer offered.

## Legal Faculty

An instructor with a title code that is defined as faculty by legal statutes. The legal faculty title codes are:

Title Code	Instructor Type
C20NN	Professor
C30NN, C60NN	Associate Professor
C40NN	Assistant Professor
C50NN	Instructor

## Major Instructor

If a section has multiple instructors the major instructor is the one that is assigned the greatest number of hours instructing the section. If there is no single instructor that teaches the greatest number of hours then the major instructor is the one with the highest ranking title code.

## Official Students

Students who are not enrolled only in excluded sections, and students who do not have a student classification of 'T' (WI resident that receives federal OASDI benefits). Excluded sections include Extension, CAPP, Year Abroad, and Remedial sections. If a student is enrolled in both official and excluded sections he/she is only excluded from the enrollment count for the excluded section. The student is not dropped from official section enrollment counts.

## Remedial

Course sections for students who have deficiencies in English and/or mathematics.

## Section

A group of students meeting at the same time and place for the same type of instruction with the same instructor.

## Section Level

The section level is a designated code indicating the intended degree of complexity or the expected level of comprehension of the section. Sections in section level 1 are excluded from this report.

Section Level	Abbrev.	Description
1	--	Remedial *
2	LD	Lower Division
3	UD	Upper Division
4	GD	Graduate Division
5	GD	Graduate Division
6	GD	Graduate Division

\* Although section level 1 is defined as a remedial section, sections with a section level of 1 are not automatically excluded from this report. Only sections that are coded as remedial are excluded.

## Study Abroad

A course section where a student takes courses both at a UW Institution and at a foreign institution as part of a study abroad program.

## Term

The semester or term for which this report is created. There are four possible terms - 1 = fall, 2 = spring, S = summer, and W = winter. Generally this report is created for the fall term only.

## Type of Instruction

The one character code indicating the instruction type of a course section, taken from the v\_c\_crs\_sec view.

Type of Instruction	Description	Instructional Category
C	Lecture	Group
D	Discussion	Group

E	Extended Degree	Individualized
F	Field Experience	Individualized
I	Independent/Individualized	Individualized
S	Seminar	Group
L	Lab	Group

## UDD

The Unit, Division, and Department code in which the course section is allocated or the instructor is funded.

## Unclassified

University of Wisconsin staff titles for appointments based on University of Wisconsin Unclassified Personnel Guideline #2 Attachment 1, and state statutes. Unclassified staff generally consist of faculty, graduate assistants, and academic staff.

## Unidentified Section

A section that has a section number of 'XXX'. Also called a Dummy Section.

## Unit

The one character code indicating one of the fourteen University of Wisconsin System institutions.

Unit Code	Unit Name
A	UW – Madison
B	UW – Milwaukee
C	UW – Eau Claire
D	UW – Green Bay
E	UW – La Crosse
F	UW – Oshkosh
G	UW – Parkside
H	UW – Platteville
J	UW – River Falls
K	UW – Stevens Point
L	UW – Stout
M	UW – Superior
N	UW – Whitewater
R	UW Colleges

## **UW Extension Credit Program**

Course sections funded by UW-Extension but reported by the institution offering the credits and collecting the fees.

## **Year**

The six digit academic year for which the report is printed. For example 199596.

# Index

## C

Cluster 4  
Cross-listed 4, 7

## D

dependent sections 7

## E

Enrollment Carrying Section 4, 7

## I

Instruction, Type of 1-2, 1-2, 4-5, 4-5, 4-5  
Instructor Type 1-4, 1-4, 1-4, 6  
Instructor, Major 2, 6  
Instructors 7

## M

Major Instructor 2, 6

## S

Section 1-2, 1-2, 4-5, 4-5, 4-5, 1-7, 1-7, 1-7  
Section Level 1, 2, 4, 1, 3  
Section, Enrollment Carrying 4, 7  
Size Range 1-4, 1-4, 1-4

## T

Type of Instruction 1-2, 1-2, 4-5, 4-5, 4-5

## U

UDD 1-2, 4, 1-2, 5-7, 5-7, 5-7