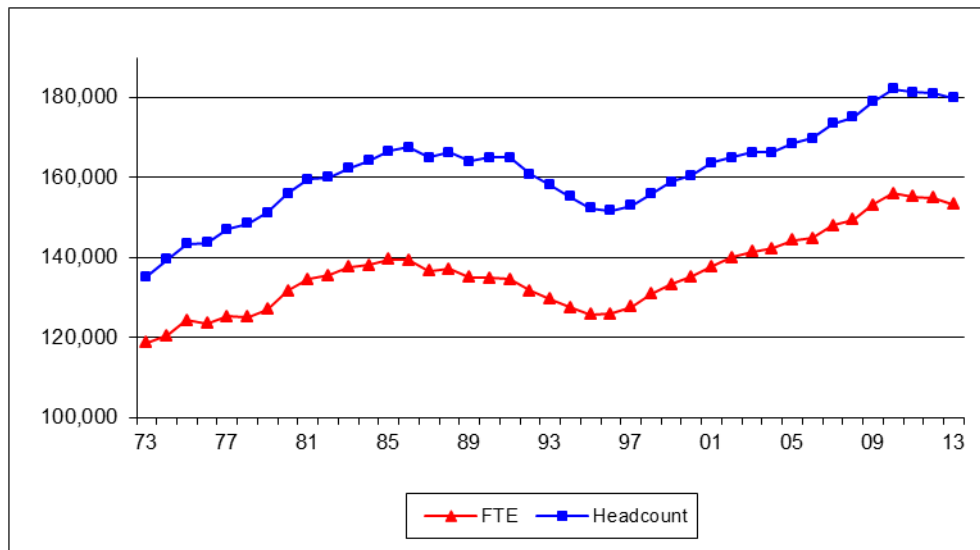


Informational Memorandum

Trends in Enrollment: Fall 2013 Update

**UW System Headcount and FTE Enrollments
Fall 1973 to Fall 2013**



- **Fall 2013 full-time equivalent (FTE) enrollment..... 153,252**
 Down 1,592 (1.0%) from fall 2012.
 Details shown in Table 1.
- **Fall 2013 headcount enrollment 179,828**
 Down 1,141 (0.6%) from fall 2012.
 Details shown in Table 2.
- **Appendices provide a detailed breakdown of student enrollment characteristics by UW institution.**

OVERALL ENROLLMENT

Fall 2013 full-time equivalent (FTE) enrollment decreased by 1,592, or 1.0%, from fall 2012 (Table 1). FTE enrollment has dropped in three straight years after continually increasing between 2004 and 2010. In fall 2013, the UW System enrolled 153,252 FTE students. Since 2004, FTE in the UW System is up by 11,042 FTE, or 7.8 percent. The highest percentage growth since fall 2004 has been at UW-Platteville (40.5%) and UW-La Crosse (18.2%).

Table 1
The University of Wisconsin System
Historical Profile of FTE Enrollment, Fall 2004 to Fall 2013

	2004	2005	2006	2007	2008	2009	2010	2011	2012	2013
MSN	36,726	37,051	36,726	37,137	37,263	37,622	38,185	37,914	38,385	38,498
MIL	21,615	22,370	22,747	23,780	23,746	24,908	25,035	24,511	23,989	23,095
Sub.	58,341	59,421	59,473	60,917	61,009	62,529	63,220	62,425	62,374	61,594
EAU	9,606	9,699	9,727	9,738	10,016	10,139	10,246	10,148	10,025	9,895
GBY	4,830	4,846	4,719	5,021	5,113	5,364	5,348	5,251	5,272	5,051
LAC	8,350	8,749	9,027	9,243	9,256	9,207	9,357	9,562	9,699	9,868
OSH	10,198	10,145	10,108	10,173	10,178	10,585	10,862	10,863	10,846	10,829
PKS	3,995	3,958	3,934	3,985	4,089	4,128	4,060	3,822	3,677	3,695
PLT	5,527	5,688	6,012	6,270	6,523	6,892	7,093	7,367	7,717	7,764
RVF	5,400	5,568	5,612	5,841	5,942	6,057	6,197	6,068	5,744	5,503
STP	8,038	7,970	8,165	8,268	8,316	8,461	8,734	8,741	8,897	8,806
STO	6,886	7,259	7,322	7,320	7,518	7,513	7,762	7,704	7,613	7,591
SUP	2,341	2,383	2,343	2,246	2,191	2,317	2,358	2,321	2,226	2,202
WTW	9,532	9,396	9,221	9,484	9,791	9,995	10,397	10,514	10,807	10,737
Sub.	74,703	75,661	76,190	77,587	78,933	80,656	82,413	82,361	82,523	81,941
UWC	9,166	9,215	9,153	9,450	9,553	10,005	10,406	10,376	9,947	9,718
UWS	142,210	144,297	144,816	147,954	149,494	153,191	156,039	155,162	154,844	153,252

*Institutional totals may not add to subtotals and totals due to rounding.

Fall 2013 headcount enrollment declined by 1,141, or 0.6 percent, from fall 2012 (Table 2). Fall headcount enrollment had increased each year from 2004 to 2010 but has since fallen for three consecutive years. In fall 2013, the UW System headcount enrollment was 179,828. Since 2004, enrollment in the UW System is up by 13,583, or 8.2 percent. The greatest growth since fall 2004 has been at UW-Platteville (40.7%) and UW-Stout (19.8%).

Table 2
The University of Wisconsin System
Historical Profile of Headcount Enrollment, Fall 2004 to Fall 2013

	2004	2005	2006	2007	2008	2009	2010	2011	2012	2013
MSN	40,750	41,106	41,028	41,563	41,620	41,654	42,180	42,065	42,463	42,903
MIL	27,248	27,978	28,309	29,338	29,215	30,418	30,470	29,726	29,114	27,784
Sub.	67,998	69,084	69,337	70,901	70,835	72,072	72,650	71,791	71,577	70,687
EAU	10,689	10,726	10,766	10,854	11,140	11,216	11,413	11,234	11,047	10,907
GBY	5,728	5,820	5,690	6,110	6,286	6,638	6,636	6,665	6,790	6,667
LAC	9,060	9,421	9,849	9,994	9,880	10,009	10,135	10,258	10,380	10,502
OSH	12,473	12,485	12,530	12,772	12,753	13,192	13,629	13,513	13,519	13,902
PKS	5,074	5,018	5,007	5,010	5,167	5,303	5,160	4,887	4,769	4,617
PLT	6,196	6,518	6,813	7,189	7,512	7,803	7,928	8,262	8,678	8,717
RVF	5,959	6,126	6,229	6,452	6,555	6,728	6,902	6,788	6,447	6,171
STP	8,996	8,837	9,048	9,115	9,163	9,209	9,500	9,477	9,677	9,643
STO	7,750	8,227	8,372	8,477	8,839	9,017	9,339	9,356	9,247	9,286
SUP	2,868	2,876	2,924	2,753	2,689	2,794	2,856	2,825	2,700	2,656
WTW	10,955	10,769	10,502	10,737	10,962	11,139	11,557	11,643	12,031	12,015
Sub.	85,748	86,823	87,730	89,463	90,946	93,048	95,055	94,908	95,285	95,083
UWC	12,499	12,597	12,639	13,029	13,275	13,789	14,385	14,570	14,107	14,058
UWS	166,245	168,504	169,706	173,393	175,056	178,909	182,090	181,269	180,969	179,828

UNDERGRADUATE ENROLLMENT

Between fall 2012 and fall 2013, undergraduate FTE enrollment in the UW System decreased by 1,324, or 1.0 percent (Table 3). FTE enrollment has grown by 10,569, or 8.4 percent, since 2004.

Table 3
The University of Wisconsin System
Historical Profile of Undergraduate FTE Enrollment, Fall 2004 to Fall 2013

	2004	2005	2006	2007	2008	2009	2010	2011	2012	2013
MSN	26,503	26,862	26,701	27,110	27,373	27,130	27,448	27,208	27,717	28,018
MIL	18,791	19,525	19,855	20,720	20,664	21,536	21,577	21,099	20,634	19,806
Sub.	45,294	46,387	46,555	47,830	48,037	48,666	49,025	48,307	48,352	47,824
EAU	9,379	9,457	9,470	9,484	9,748	9,869	9,980	9,868	9,766	9,652
GBY	4,726	4,764	4,652	4,933	5,022	5,261	5,247	5,150	5,182	4,938
LAC	7,543	7,883	8,029	8,267	8,368	8,492	8,672	8,855	9,084	9,286
OSH	9,580	9,557	9,524	9,557	9,658	10,025	10,338	10,359	10,382	10,310
PKS	3,951	3,916	3,879	3,930	4,021	4,051	3,992	3,761	3,602	3,630
PLT	5,282	5,426	5,734	5,996	6,212	6,582	6,831	7,050	7,394	7,428
RVF	5,173	5,334	5,387	5,602	5,670	5,775	5,902	5,808	5,521	5,292
STP	7,832	7,786	7,969	8,068	8,125	8,262	8,512	8,537	8,697	8,609
STO	6,439	6,800	6,841	6,821	6,965	6,973	7,226	7,204	7,153	7,064
SUP	2,190	2,229	2,203	2,125	2,066	2,197	2,245	2,223	2,141	2,129
WTW	8,829	8,702	8,551	8,793	9,091	9,226	9,575	9,679	10,059	10,075
Sub.	70,924	71,853	72,239	73,576	74,947	76,713	78,521	78,493	78,980	78,412
UWC	9,166	9,215	9,153	9,450	9,553	10,005	10,407	10,376	9,947	9,718
UWS	125,385	127,456	127,947	130,855	132,537	135,384	137,953	137,176	137,278	135,954

*Institutional totals may not add to subtotals and totals due to rounding.

Undergraduate headcount enrollment decreased by 992, or 0.6 percent, between fall 2012 and fall 2013. Since 2004, undergraduate headcount enrollment has increased by 13,481, or 9.4 percent.

Table 4
The University of Wisconsin System
Historical Profile of Undergraduate Headcount Enrollment, Fall 2004 to Fall 2013

	2004	2005	2006	2007	2008	2009	2010	2011	2012	2013
MSN	29,372	29,751	29,639	30,166	30,362	29,925	30,170	30,014	30,507	30,972
MIL	22,673	23,326	23,595	24,395	24,299	25,204	25,239	24,639	24,175	23,004
Sub.	52,045	53,077	53,234	54,561	54,661	55,129	55,409	54,653	54,682	53,976
EAU	10,143	10,190	10,152	10,189	10,457	10,617	10,800	10,579	10,500	10,388
GBY	5,491	5,622	5,534	5,911	6,088	6,369	6,389	6,445	6,611	6,444
LAC	7,869	8,160	8,341	8,547	8,641	8,871	9,073	9,211	9,515	9,684
OSH	10,880	10,960	11,002	11,146	11,393	11,672	12,230	12,273	12,384	12,623
PKS	4,967	4,915	4,873	4,890	5,045	5,153	5,015	4,766	4,601	4,489
PLT	5,622	5,840	6,133	6,414	6,612	6,971	7,232	7,460	7,840	7,867
RVF	5,511	5,678	5,753	6,007	6,050	6,222	6,373	6,324	6,046	5,787
STP	8,526	8,467	8,644	8,694	8,717	8,804	9,062	9,085	9,296	9,292
STO	7,020	7,437	7,517	7,551	7,769	7,973	8,301	8,353	8,270	8,180
SUP	2,558	2,587	2,626	2,497	2,440	2,576	2,631	2,655	2,550	2,522
WTW	9,550	9,405	9,210	9,408	9,621	9,730	10,144	10,228	10,752	10,852
Sub.	78,137	79,261	79,785	81,254	82,833	84,958	87,250	87,379	88,365	88,128
UWC	12,499	12,597	12,639	13,029	13,275	13,789	14,385	14,570	14,107	14,058
UWS	142,681	144,935	145,658	148,844	150,769	153,876	157,044	156,602	157,154	156,162

GRADUATE/PROFESSIONAL ENROLLMENT

Between fall 2012 and fall 2013, graduate and professional FTE enrollment decreased by 267, or 1.5 percent. Overall FTE enrollment in graduate/professional programs has grown by 473 FTE since 2004, or 2.8 percent. Sectors showing the highest FTE growth since 2004 include the Doctorate-Research/Scholarship (PhD) programs at UW-Milwaukee and Master’s programs at UW-Platteville. The Doctorate-Professional Practice category includes enrollment at UW-Madison (audiology, nursing practice, physical therapy, law, medicine, pharmacy, and veterinary medicine), UW-Milwaukee (nursing practice and physical therapy), UW-Eau Claire (nursing practice), UW-La Crosse (physical therapy), UW-Oshkosh (nursing practice), UW-Stevens Point (audiology), and UW-Stout (career and technical education).

Table 5
The University of Wisconsin System
Historical Profile of Graduate/Professional FTE Enrollment, Fall 2004 to Fall 2013

	2004	2005	2006	2007	2008	2009	2010	2011	2012	2013
MSN										
Masters	2,590	2,491	2,466	2,464	2,469	2,691	2,748	2,671	2,775	2,871
Doct-Rsrch/Schlr	5,186	5,177	4,978	5,006	4,854	5,247	5,445	5,385	5,343	5,136
Doct-Prof. Practice	2,447	2,521	2,581	2,557	2,568	2,554	2,543	2,650	2,549	2,474
Total	10,223	10,189	10,026	10,027	9,891	10,491	10,737	10,706	10,668	10,481
MIL										
Masters	2,045	2,043	2,057	2,222	2,197	2,375	2,388	2,287	2,194	2,107
Doct-Rsrch/Schlr	780	802	835	837	846	913	979	1,033	1,047	1,048
Doct-Prof. Practice					39	84	91	93	114	134
Total	2,824	2,845	2,892	3,060	3,082	3,372	3,458	3,412	3,355	3,290
Sub.	13,047	13,034	12,918	13,086	12,973	13,863	14,195	14,118	14,022	13,770
EAU										
Masters	227	242	257	254	268	270	261	268	237	205
Doct-Prof. Practice							5	12	23	38
Total	227	242	257	254	268	270	266	280	260	243
GBY	104	83	67	88	90	103	101	101	90	113
LAC										
Masters	807	866	930	863	750	593	549	559	467	436
Doct-Prof. Practice			68	113	138	121	137	149	147	146
Total	807	866	998	976	888	714	685	707	614	582
OSH										
Masters	618	588	585	616	519	559	524	504	443	484
Doct-Prof. Practice									22	36
Total	618	588	585	616	519	559	524	504	465	520
PKS	44	42	54	55	68	76	69	62	75	64
PLT	246	262	278	274	311	310	262	317	323	336
RVF	226	234	225	239	272	282	294	260	224	212
STP										
Masters	206	176	191	198	187	187	210	194	188	183
Doct-Prof. Practice		8	5	2	4	12	12	11	13	14
Total	206	184	196	199	191	199	221	204	200	197
STO										
Masters	446	460	481	500	554	539	537	500	461	525
Doct-Prof. Practice										1.92
Total	446	460	481	500	554	539	537	500	461	527
SUP	151	154	140	121	124	121	113	98	84	73.25
WTW	704	694	670	691	700	769	822	835	748	662
Sub.	3,778	3,808	3,951	4,012	3,985	3,944	3,893	3,868	3,543	3,528
UWS	16,826	16,841	16,869	17,099	16,958	17,807	18,088	17,986	17,566	17,299

*Institutional totals may not add to subtotals and totals due to rounding.

The fall 2013 headcount enrollment of 23,666 in graduate and professional programs is a decrease of 149 students from fall 2012, or 0.6 percent. Graduate headcount enrollment has increased by 102 since fall 2004, a 0.4 percent increase. Sectors showing the highest percentage headcount growth since 2004 include the Doctorate-Research/Scholarship (Ph.D.) programs at UW-Milwaukee and the Master's programs at UW-Platteville and UW-Stout.

Table 6
The University of Wisconsin System
Historical Profile of Graduate/Professional Headcount Enrollment, Fall 2004 to Fall 2013

	2004	2005	2006	2007	2008	2009	2010	2011	2012	2013
MSN										
Masters	3,499	3,406	3,418	3,393	3,368	3,669	3,737	3,657	3,697	3,799
Doct-Rsrch/Schlr	5,430	5,422	5,396	5,451	5,328	5,552	5,731	5,732	5,688	5,606
Doct-Prof. Practice	2,449	2,527	2,575	2,553	2,562	2,508	2,542	2,662	2,571	2,526
Total	11,378	11,355	11,389	11,397	11,258	11,729	12,010	12,051	11,956	11,931
MIL										
Masters	3,677	3,708	3,710	3,925	3,862	4,020	3,991	3,760	3,586	3,385
Doct-Rsrch/Schlr	898	944	1,004	1,018	1,023	1,114	1,153	1,229	1,233	1,234
Doct-Prof. Practice					31	80	87	98	120	161
Total	4,575	4,652	4,714	4,943	4,916	5,214	5,231	5,087	4,939	4,780
Sub.	15,953	16,007	16,103	16,340	16,174	16,943	17,241	17,138	16,895	16,711
EAU										
Masters	546	536	614	665	683	599	599	628	511	464
Doct-Prof. Practice							14	27	36	55
Total	546	536	614	665	683	599	613	655	547	519
GBY	237	198	156	199	198	269	247	220	179	223
LAC										
Masters	1,191	1,261	1,463	1,362	1,115	1,022	939	914	732	686
Doct-Prof. Practice			45	85	124	116	123	133	133	132
Total	1,191	1,261	1,508	1,447	1,239	1,138	1,062	1,047	865	818
OSH										
Masters	1,593	1,525	1,528	1,626	1,360	1,520	1,399	1,240	1,102	1,230
Doct-Prof. Practice									33	49
Total	1,593	1,525	1,528	1,626	1,360	1,520	1,399	1,240	1,135	1,279
PKS	107	103	134	120	122	150	145	121	168	128
PLT	574	678	680	775	900	832	696	802	838	850
RVF	448	448	476	445	505	506	529	464	401	384
STP										
Masters	470	361	397	418	440	390	423	377	365	332
Doct-Prof. Practice			7	3	6	15	15	15	16	19
Total	470	361	404	421	446	405	438	392	381	351
STO										
Masters	730	790	855	926	1,070	1,044	1,038	1,003	977	1,095
Doct-Prof. Practice										11
Total	730	790	855	926	1,070	1,044	1,038	1,003	977	1,106
SUP	310	289	298	256	249	218	225	170	150	134
WTW	1,405	1,364	1,292	1,329	1,341	1,409	1,413	1,415	1,279	1,163
Sub.	7,611	7,553	7,945	8,209	8,113	8,090	7,805	7,529	6,920	6,955
UWS	23,564	23,569	24,048	24,549	24,287	25,033	25,046	24,667	23,815	23,666

RESIDENT STATUS OF UW SYSTEM STUDENTS

Undergraduate students with Wisconsin resident status made up 80 percent of the undergraduate enrollment in the UW System in fall 2013 (Table 7). Another 12 percent were classified as nonresident students, and the remaining 9 percent attended a UW System institution under the Minnesota or Michigan Reciprocity programs. Since 2006, the percentage of resident students has declined while the percentage of nonresident undergraduates has increased from 7 percent to 12 percent, due in part to tuition programs targeting out-of-state students. These include the Tri-State Initiative (1,519 headcount enrollment in fall 2013), the Midwest Student Exchange (2,080), and the Return to Wisconsin (90) programs.

In fall 2013, Wisconsin resident undergraduate enrollment ranged from a low of 48 percent at UW-River Falls to a high of 96 percent at UW-Oshkosh and UW Colleges. Nonresident enrollment ranged from 3 percent at UW Colleges to a high of 27 percent at UW-Madison. Minnesota reciprocity students make up a large proportion of the enrollment at UW institutions near the Minnesota border. The highest level of reciprocity enrollment is found at UW-River Falls, where Minnesota reciprocity students comprised 47 percent of total undergraduate enrollment. Michigan reciprocity is used by a small group of students attending UW-Marinette.

Graduate/professional headcount enrollment by resident status is shown in Table 8. Wisconsin resident graduate/professional students comprised 55 percent of total graduate/professional student enrollment in the UW System institutions in fall 2013. Another 42 percent were classified as nonresident students, and 3 percent were Minnesota reciprocity students. Resident graduate/professional enrollment has declined 8 percentage points since fall 2007, while nonresident graduate/professional enrollment has grown 8 percentage points in the same time period.

In fall 2013, Wisconsin resident graduate/professional enrollment ranged from 39 percent at UW-Madison to 95 percent at UW-Oshkosh. At UW-Superior, reciprocity students made up 49 percent of the graduate enrollment.

Table 7
The University of Wisconsin System
Historical Profile of Undergraduate Headcount Enrollment by Resident Status
Fall 2004 to Fall 2013

		2004	2005	2006	2007	2008	2009	2010	2011	2012	2013
MSN	Resident	69%	68%	67%	66%	65%	65%	65%	65%	64%	63%
	Nonresident	21%	22%	23%	24%	24%	24%	25%	24%	26%	27%
	Reciprocity	10%	10%	10%	10%	10%	11%	11%	11%	11%	10%
MIL	Resident	97%	97%	97%	96%	95%	95%	95%	94%	93%	91%
	Nonresident	2%	2%	2%	2%	3%	4%	4%	5%	6%	7%
	Reciprocity	1%	1%	1%	1%	1%	1%	1%	2%	2%	2%
EAU	Resident	77%	77%	78%	78%	78%	77%	76%	75%	74%	73%
	Nonresident	2%	2%	2%	2%	2%	3%	3%	4%	4%	5%
	Reciprocity	21%	21%	20%	20%	20%	20%	20%	21%	21%	22%
GBY	Resident	95%	95%	95%	94%	94%	94%	93%	93%	93%	93%
	Nonresident	4%	4%	4%	5%	5%	5%	6%	6%	6%	6%
	Reciprocity	1%	1%	1%	1%	1%	1%	1%	1%	1%	1%
LAC	Resident	83%	83%	83%	82%	82%	81%	81%	81%	81%	80%
	Nonresident	4%	4%	4%	6%	6%	7%	7%	7%	6%	6%
	Reciprocity	13%	13%	13%	12%	12%	12%	12%	12%	13%	13%
OSH	Resident	98%	98%	98%	98%	97%	97%	97%	97%	96%	96%
	Nonresident	2%	2%	2%	2%	2%	2%	2%	3%	3%	4%
	Reciprocity	1%	1%	1%	1%	1%	1%	1%	1%	1%	0%
PKS	Resident	92%	92%	92%	91%	91%	91%	89%	88%	88%	86%
	Nonresident	8%	8%	8%	8%	9%	9%	10%	11%	12%	14%
	Reciprocity	0%	0%	0%	0%	0%	0%	0%	0%	0%	0%
PLT	Resident	90%	89%	86%	84%	82%	81%	79%	78%	76%	76%
	Nonresident	7%	9%	12%	14%	16%	18%	20%	20%	22%	22%
	Reciprocity	2%	2%	2%	2%	2%	2%	2%	1%	2%	2%
RVF	Resident	52%	53%	52%	52%	51%	50%	50%	48%	48%	48%
	Nonresident	3%	2%	2%	2%	3%	3%	3%	3%	3%	5%
	Reciprocity	45%	45%	46%	46%	46%	47%	47%	49%	48%	47%
STP	Resident	92%	93%	92%	92%	91%	91%	90%	91%	90%	89%
	Nonresident	3%	3%	4%	4%	5%	5%	6%	6%	7%	8%
	Reciprocity	4%	4%	4%	4%	4%	4%	4%	4%	4%	4%
STO	Resident	71%	69%	69%	69%	68%	69%	69%	69%	67%	67%
	Nonresident	2%	3%	3%	4%	4%	3%	4%	4%	5%	6%
	Reciprocity	27%	28%	28%	28%	28%	28%	27%	27%	28%	27%
SUP	Resident	53%	55%	54%	53%	53%	53%	52%	52%	51%	51%
	Nonresident	9%	8%	8%	7%	8%	10%	11%	10%	11%	11%
	Reciprocity	38%	37%	38%	41%	39%	38%	37%	38%	38%	38%
WTW	Resident	95%	95%	95%	93%	92%	91%	90%	88%	87%	85%
	Nonresident	5%	5%	5%	6%	7%	9%	10%	11%	13%	14%
	Reciprocity	0%	0%	1%	1%	1%	1%	0%	0%	0%	1%
UWC	Resident	97%	97%	97%	96%	97%	97%	97%	97%	96%	96%
	Nonresident	2%	2%	2%	3%	2%	2%	2%	3%	3%	3%
	Reciprocity	1%	1%	1%	1%	1%	1%	1%	1%	1%	1%
UW System	Resident	84%	84%	84%	83%	82%	82%	82%	81%	80%	80%
	Nonresident	7%	7%	7%	8%	9%	9%	9%	10%	11%	12%
	Reciprocity	9%	9%	9%	9%	9%	9%	9%	9%	9%	9%

Note: Reciprocity includes students enrolled in the Minnesota and Michigan reciprocity programs.

Table 8
The University of Wisconsin System
Historical Profile of Graduate/Professional Headcount Enrollment by Resident Status
Fall 2004 to Fall 2013

		2004	2005	2006	2007	2008	2009	2010	2011	2012	2013
MSN	Resident	44%	44%	44%	45%	44%	43%	43%	43%	41%	39%
	Nonresident	54%	54%	54%	54%	54%	55%	55%	56%	57%	59%
	Reciprocity	2%	2%	2%	2%	2%	2%	2%	2%	2%	2%
MIL	Resident	78%	75%	74%	74%	73%	72%	70%	69%	68%	67%
	Nonresident	21%	23%	24%	25%	25%	26%	27%	29%	30%	31%
	Reciprocity	1%	1%	1%	2%	2%	2%	2%	2%	2%	2%
EAU	Resident	85%	81%	82%	83%	81%	77%	80%	75%	73%	74%
	Nonresident	7%	8%	7%	10%	12%	15%	14%	16%	18%	20%
	Reciprocity	8%	10%	11%	7%	7%	8%	7%	8%	10%	6%
GBY	Resident	94%	94%	94%	94%	97%	96%	96%	96%	93%	91%
	Nonresident	5%	4%	4%	5%	3%	4%	3%	3%	4%	9%
	Reciprocity	1%	3%	2%	1%	0%	0%	0%	1%	3%	1%
LAC	Resident	86%	85%	86%	84%	79%	80%	79%	75%	70%	68%
	Nonresident	7%	8%	7%	9%	12%	10%	11%	14%	16%	18%
	Reciprocity	7%	7%	7%	7%	9%	9%	9%	11%	14%	14%
OSH	Resident	97%	97%	97%	97%	96%	96%	97%	97%	97%	95%
	Nonresident	3%	3%	3%	3%	3%	4%	2%	3%	3%	5%
	Reciprocity	0%	1%	0%	0%	0%	0%	0%	0%	0%	0%
PKS	Resident	93%	92%	89%	86%	70%	80%	83%	85%	86%	77%
	Nonresident	7%	8%	11%	14%	30%	20%	17%	15%	14%	23%
	Reciprocity	0%	0%	0%	0%	0%	0%	0%	0%	0%	0%
PLT	Resident	58%	57%	59%	62%	60%	59%	62%	55%	53%	56%
	Nonresident	42%	43%	41%	37%	40%	41%	38%	45%	47%	44%
	Reciprocity	0%	0%	0%	0%	0%	0%	0%	0%	0%	0%
RVF	Resident	57%	61%	64%	64%	65%	62%	67%	63%	53%	46%
	Nonresident	7%	6%	6%	6%	10%	7%	5%	7%	9%	16%
	Reciprocity	36%	33%	30%	31%	26%	31%	28%	30%	37%	39%
STP	Resident	90%	88%	88%	86%	86%	83%	82%	75%	77%	72%
	Nonresident	7%	10%	10%	11%	12%	15%	15%	21%	19%	22%
	Reciprocity	2%	3%	2%	3%	2%	2%	3%	5%	4%	6%
STO	Resident	71%	71%	71%	67%	67%	66%	65%	62%	59%	60%
	Nonresident	18%	21%	21%	26%	25%	25%	26%	29%	32%	32%
	Reciprocity	11%	9%	8%	7%	9%	9%	8%	9%	9%	8%
SUP	Resident	62%	55%	61%	61%	57%	58%	60%	51%	49%	44%
	Nonresident	3%	2%	3%	3%	2%	3%	4%	4%	4%	7%
	Reciprocity	35%	42%	37%	36%	41%	39%	36%	45%	47%	49%
WTW	Resident	89%	88%	87%	86%	85%	87%	85%	81%	78%	81%
	Nonresident	11%	11%	12%	13%	14%	13%	15%	18%	21%	19%
	Reciprocity	0%	1%	0%	0%	1%	0%	0%	1%	1%	1%
UW System	Resident	63%	62%	63%	63%	61%	61%	60%	58%	56%	55%
	Nonresident	34%	35%	34%	34%	35%	36%	37%	38%	41%	42%
	Reciprocity	3%	3%	3%	3%	3%	3%	3%	3%	4%	3%

Note: Reciprocity includes students enrolled in the Minnesota reciprocity program.

FULL-TIME/PART-TIME STATUS OF UW SYSTEM UNDERGRADUATE STUDENTS

Part-time students made up 17 percent of the undergraduate enrollment in the UW System in fall 2013 (Table 9). The percentage of part-time undergraduate students has been relatively stable at 15 to 17 percent since 2004. In fall 2013, part-time undergraduate student enrollment ranged from a low of 6 percent at UW-La Crosse to a high of 43 percent at UW Colleges.

**Table 9
The University of Wisconsin System
Historical Profile of Undergraduate Headcount Enrollment, by Full-Time/Part-Time Status
Fall 2004 to Fall 2013**

		2004	2005	2006	2007	2008	2009	2010	2011	2012	2013
MSN	Full-time	91%	91%	91%	91%	91%	92%	92%	91%	91%	91%
	Part-time	9%	9%	9%	9%	9%	8%	8%	9%	9%	9%
MIL	Full-time	79%	81%	82%	83%	83%	83%	83%	83%	82%	82%
	Part-time	21%	19%	18%	17%	17%	17%	17%	17%	18%	18%
Sub.	Full-time	86%	87%	87%	87%	87%	88%	88%	87%	87%	87%
	Part-time	14%	13%	13%	13%	13%	12%	12%	13%	13%	13%
EAU	Full-time	91%	92%	93%	93%	93%	92%	91%	92%	92%	91%
	Part-time	9%	8%	7%	7%	7%	8%	9%	8%	8%	9%
GBY	Full-time	82%	80%	78%	78%	77%	77%	75%	72%	70%	67%
	Part-time	18%	20%	22%	22%	23%	23%	25%	28%	30%	33%
LAC	Full-time	94%	95%	95%	95%	95%	94%	94%	94%	94%	94%
	Part-time	6%	5%	5%	5%	5%	6%	6%	6%	6%	6%
OSH	Full-time	80%	80%	79%	78%	77%	79%	77%	76%	75%	73%
	Part-time	20%	20%	21%	22%	23%	21%	23%	24%	25%	27%
PKS	Full-time	73%	72%	71%	73%	73%	72%	73%	71%	71%	74%
	Part-time	27%	28%	29%	27%	27%	28%	27%	29%	29%	26%
PLT	Full-time	90%	89%	90%	89%	90%	90%	90%	90%	90%	89%
	Part-time	10%	11%	10%	11%	10%	10%	10%	10%	10%	11%
RVF	Full-time	93%	93%	93%	93%	93%	93%	92%	91%	91%	90%
	Part-time	7%	7%	7%	7%	7%	7%	8%	9%	9%	10%
STP	Full-time	91%	92%	92%	93%	93%	94%	94%	93%	93%	93%
	Part-time	9%	8%	8%	7%	7%	6%	6%	7%	7%	7%
STO	Full-time	90%	90%	89%	88%	88%	85%	84%	83%	83%	83%
	Part-time	10%	10%	11%	12%	12%	15%	16%	17%	17%	17%
SUP	Full-time	82%	82%	80%	82%	80%	81%	81%	79%	79%	80%
	Part-time	18%	18%	20%	18%	20%	19%	19%	21%	21%	20%
WTW	Full-time	91%	91%	92%	92%	93%	94%	93%	93%	92%	91%
	Part-time	9%	9%	8%	8%	7%	6%	7%	7%	8%	9%
Sub.	Full-time	88%	88%	88%	88%	87%	87%	87%	86%	86%	85%
	Part-time	12%	12%	12%	12%	13%	13%	13%	14%	14%	15%
UWC	Full-time	66%	65%	64%	64%	63%	64%	63%	61%	59%	57%
	Part-time	34%	35%	36%	36%	37%	36%	37%	39%	41%	43%
UWS	Full-time	85%	85%	85%	85%	85%	85%	85%	84%	84%	83%
	Part-time	15%	15%	15%	15%	15%	15%	15%	16%	16%	17%

FULL-TIME/PART-TIME STATUS OF UW SYSTEM GRADUATE/PROFESSIONAL STUDENTS

Part-time students made up 40 percent of the graduate/professional enrollment in the UW System in fall 2013 (Table 10). In fall 2013, part-time graduate/professional student enrollment ranged from a low of 18 percent at UW-Madison to a high of 88 percent at UW-Platteville.

Table 10
The University of Wisconsin System
Historical Profile of Graduate/Professional Headcount Enrollment, by Full-Time/Part-Time Status
Fall 2004 to Fall 2013

		2004	2005	2006	2007	2008	2009	2010	2011	2012	2013
MSN	Full-time	83%	83%	82%	82%	83%	82%	82%	82%	82%	82%
	Part-time	17%	17%	18%	18%	17%	18%	18%	18%	18%	18%
MIL	Full-time	44%	44%	45%	45%	47%	49%	51%	53%	54%	55%
	Part-time	56%	56%	55%	55%	53%	51%	49%	47%	46%	45%
Sub.	Full-time	72%	72%	71%	71%	72%	72%	73%	73%	74%	74%
	Part-time	28%	28%	29%	29%	28%	28%	27%	27%	26%	26%
EAU	Full-time	19%	24%	19%	16%	17%	19%	19%	18%	21%	21%
	Part-time	81%	76%	81%	84%	83%	81%	81%	82%	79%	79%
GBY	Full-time	25%	21%	24%	23%	21%	17%	19%	25%	30%	26%
	Part-time	75%	79%	76%	77%	79%	83%	81%	75%	70%	74%
LAC	Full-time	28%	29%	27%	30%	36%	29%	33%	39%	44%	48%
	Part-time	72%	71%	73%	70%	64%	71%	67%	61%	56%	52%
OSH	Full-time	12%	13%	12%	13%	12%	13%	10%	13%	14%	14%
	Part-time	88%	87%	88%	87%	88%	87%	90%	87%	86%	86%
PKS	Full-time	11%	16%	13%	13%	25%	29%	21%	24%	20%	26%
	Part-time	89%	84%	87%	87%	75%	71%	79%	76%	80%	74%
PLT	Full-time	14%	12%	18%	9%	10%	9%	9%	16%	13%	12%
	Part-time	86%	88%	83%	91%	90%	91%	91%	84%	87%	88%
RVF	Full-time	33%	26%	21%	28%	24%	29%	27%	30%	35%	33%
	Part-time	67%	74%	79%	72%	76%	71%	73%	70%	65%	67%
STP	Full-time	23%	29%	29%	29%	25%	27%	33%	30%	38%	34%
	Part-time	77%	71%	71%	71%	75%	73%	67%	70%	62%	66%
STO	Full-time	42%	38%	35%	31%	29%	29%	26%	25%	24%	24%
	Part-time	58%	62%	65%	69%	71%	71%	74%	75%	76%	76%
SUP	Full-time	29%	38%	26%	23%	31%	35%	32%	41%	39%	38%
	Part-time	71%	62%	74%	77%	69%	65%	68%	59%	61%	62%
WTW	Full-time	25%	28%	28%	28%	27%	29%	35%	39%	39%	36%
	Part-time	75%	72%	72%	72%	73%	71%	65%	61%	61%	64%
Sub.	Full-time	24%	24%	23%	22%	23%	23%	24%	27%	28%	27%
	Part-time	76%	76%	77%	78%	77%	77%	76%	73%	72%	73%
UWS	Full-time	56%	56%	55%	55%	56%	56%	58%	59%	61%	60%
	Part-time	44%	44%	45%	45%	44%	44%	42%	41%	39%	40%

Appendices

Fall 2013

Detailed breakdown of enrollment for the overall UW System and individual institutions.

**The University of Wisconsin System
Fall 2013**

	Fresh.	Soph.	Junior	Senior	UG Spec.	UG Total	GR Spec.	Masters	Doctorate-Rsrch/ Schlrshp	Doctorate-Prof. Practice	Male	Female	Total
Total Headcount	38,784	33,157	30,751	43,429	10,041	156,162	1,630	12,243	6,840	2,953	83,993	95,835	179,828
Full-Time Equiv. (FTE)	35,790	30,340	28,410	37,753	3,661	135,954	463	7,808	6,184	2,843	72,423	80,829	153,252
Entrance Status													
New	27,966	1,485	78	7	6,631	36,167	603	3,729	849	725	18,772	23,301	42,073
Continuing	7,871	27,008	26,991	41,459	2,839	106,168	861	8,336	5,890	2,202	58,329	65,128	123,457
Re-entry	533	598	431	773	571	2,906	166	178	101	26	1,665	1,712	3,377
Transfer	2,414	4,066	3,251	1,190	0	10,921	0	0	0	0	5,227	5,694	10,921
Resident Status													
Resident	31,187	26,134	23,973	34,476	8,506	124,276	1,301	7,900	1,554	2,195	63,576	73,650	137,226
Non-Resident	4,389	3,991	3,657	4,655	1,407	18,099	315	3,738	5,228	638	14,339	13,679	28,018
Reciprocity	3,208	3,032	3,121	4,298	128	13,787	14	605	58	120	6,078	8,506	14,584
Race/Ethnicity													
African American	1,423	1,045	885	1,081	221	4,655	69	461	187	93	2,490	2,975	5,465
Hispanic/Latino	2,101	1,479	1,248	1,528	291	6,647	35	411	314	86	3,460	4,033	7,493
American Indian	161	118	153	216	44	692	9	77	17	9	311	493	804
SE Asian American	1,027	700	599	863	66	3,255	5	119	49	19	1,567	1,880	3,447
Other Asian American	518	504	515	793	219	2,549	20	270	196	162	1,549	1,648	3,197
Hawaiian/Pacific Islander	46	24	28	39	9	146	1	10	2	4	71	92	163
White	31,331	27,275	25,798	36,774	7,876	129,054	1,375	9,241	3,527	2,304	67,394	78,107	145,501
Two or More Races	1,079	809	663	845	144	3,540	17	151	124	49	1,694	2,187	3,881
International	1,053	1,157	806	1,063	860	4,939	48	1,389	2,216	58	4,836	3,814	8,650
Unknown	45	46	56	227	311	685	51	114	208	169	621	606	1,227
Full-Time/Part-Time Status													
Part-Time	2,987	3,636	2,923	7,763	8,748	26,057	1,542	6,421	1,082	318	14,984	20,436	35,420
Full-Time	35,797	29,521	27,828	35,666	1,293	130,105	88	5,822	5,758	2,635	69,009	75,399	144,408
Age Range													
19 and Under	32,465	15,950	2,025	122	4,616	55,178	0	1	2	0	24,178	31,003	55,181
20-24	4,333	14,197	24,854	33,398	1,725	78,507	110	3,511	1,143	1,380	40,926	43,725	84,651
25-29	933	1,359	1,837	4,953	992	10,074	276	4,063	2,845	1,135	9,300	9,093	18,393
30 and Over	1,053	1,650	2,035	4,956	2,702	12,396	1,243	4,667	2,850	438	9,582	12,012	21,594
Unknown	0	1	0	0	6	7	1	1	0	0	7	2	9
Gender													
Male	18,459	15,830	14,661	20,615	3,916	73,481	420	5,215	3,659	1,218	83,993	0	83,993
Female	20,325	17,327	16,090	22,814	6,125	82,681	1,210	7,028	3,181	1,735	0	95,835	95,835
Headcount History													
2012	39,823	33,635	30,665	43,653	9,378	157,154	1,764	12,221	6,921	2,909	84,347	96,622	180,969
2011	40,363	33,742	30,585	43,090	8,822	156,602	1,647	13,124	6,961	2,935	84,458	96,811	181,269
2010	41,365	34,062	30,043	42,620	8,954	157,044	1,895	13,486	6,884	2,781	84,940	97,150	182,090
2009	41,369	32,889	29,825	41,017	8,776	153,876	1,959	13,689	6,666	2,719	82,634	96,275	178,909
2008	41,173	32,647	29,091	39,651	8,207	150,769	2,194	13,019	6,351	2,723	80,354	94,702	175,056

For more information, see: <http://www.uwsa.edu/opar/ssb/>

*Excludes Students Studying Away

r_d100_tot
2/3/2014

**The University of Wisconsin System
UW-Madison Fall 2013**

	Fresh.	Soph.	Junior	Senior	UG Spec.	UG Total	GR Spec.	Masters	Doctorate-Rsrch/ Schlrshp	Doctorate-Prof. Practice	Male	Female	Total
Total Headcount	5,208	6,260	7,475	10,225	1,804	30,972	0	3,799	5,606	2,526	21,110	21,793	42,903
Full-Time Equiv. (FTE)	4,843	6,034	7,128	9,297	715	28,018	0	2,871	5,136	2,474	18,972	19,526	38,498
Entrance Status													
New	5,105	1,183	51	0	814	7,153	0	1,509	711	633	4,822	5,184	10,006
Continuing	86	4,508	6,827	9,905	841	22,167	0	2,256	4,845	1,874	15,417	15,725	31,142
Re-entry	8	47	64	103	149	371	0	34	50	19	260	214	474
Transfer	9	522	533	217	0	1,281	0	0	0	0	611	670	1,281
Resident Status													
Resident	3,219	3,566	4,706	6,742	1,269	19,502	0	1,840	1,036	1,833	11,661	12,550	24,211
Non-Resident	1,536	1,974	1,925	2,350	520	8,305	0	1,846	4,527	622	7,895	7,405	15,300
Reciprocity	453	720	844	1,133	15	3,165	0	113	43	71	1,554	1,838	3,392
Race/Ethnicity													
African American	142	123	148	206	54	673	0	88	137	87	455	530	985
Hispanic/Latino	278	266	359	427	44	1,374	0	154	264	79	895	976	1,871
American Indian	11	14	18	22	5	70	0	18	15	9	57	55	112
SE Asian American	113	101	146	157	8	525	0	35	43	13	246	370	616
Other Asian American	150	225	285	426	63	1,149	0	122	160	154	796	789	1,585
Hawaiian/Pacific Islander	5	10	9	11	0	35	0	2	2	3	17	25	42
White	3,981	4,667	5,853	8,020	1,025	23,546	0	2,509	2,863	1,911	14,941	15,888	30,829
Two or More Races	147	156	194	265	13	775	0	50	107	46	446	532	978
International	370	685	448	619	397	2,519	0	761	1,811	57	2,843	2,305	5,148
Unknown	11	13	15	72	195	306	0	60	204	167	414	323	737
Full-Time/Part-Time Status													
Part-Time	23	56	210	1,033	1,412	2,734	0	1,250	690	148	2,372	2,450	4,822
Full-Time	5,185	6,204	7,265	9,192	392	28,238	0	2,549	4,916	2,378	18,738	19,343	38,081
Age Range													
19 and Under	5,133	5,059	1,568	93	122	11,975	0	0	2	0	5,572	6,405	11,977
20-24	67	1,167	5,673	9,306	513	16,726	0	1,413	1,065	1,207	10,079	10,332	20,411
25-29	2	21	132	470	274	899	0	1,332	2,424	1,003	2,987	2,671	5,658
30 and Over	6	13	102	356	894	1,371	0	1,054	2,115	316	2,471	2,385	4,856
Unknown	0	0	0	0	1	1	0	0	0	0	1	0	1
Gender													
Male	2,414	3,099	3,652	5,104	864	15,133	0	1,797	3,067	1,113	21,110	0	21,110
Female	2,794	3,161	3,823	5,121	940	15,839	0	2,002	2,539	1,413	0	21,793	21,793
Headcount History													
2012	5,232	6,104	7,507	9,955	1,709	30,507	0	3,697	5,688	2,571	20,764	21,699	42,463
2011	5,028	6,168	7,293	9,890	1,635	30,014	0	3,657	5,732	2,662	20,519	21,546	42,065
2010	5,239	6,006	7,155	10,125	1,645	30,170	0	3,737	5,731	2,542	20,544	21,636	42,180
2009	5,128	5,817	7,554	9,777	1,649	29,925	0	3,669	5,552	2,508	20,112	21,542	41,654
2008	5,282	6,200	7,353	9,942	1,585	30,362	0	3,368	5,328	2,562	19,984	21,636	41,620

For more information, see: <http://www.uwsa.edu/opar/ssb/>

*Excludes Students Studying Away

r_d200_tot
2/3/2014

**The University of Wisconsin System
UW-Milwaukee Fall 2013**

	Fresh.	Soph.	Junior	Senior	UG Spec.	UG Total	GR Spec.	Masters	Doctorate-Rsrch/ Schlrshp	Doctorate-Prof. Practice	Male	Female	Total
Total Headcount	4,731	5,030	4,840	7,130	1,273	23,004	411	2,974	1,234	161	13,246	14,538	27,784
Full-Time Equiv. (FTE)	4,352	4,576	4,346	5,993	540	19,806	152	1,955	1,048	134	11,132	11,963	23,095
Entrance Status													
New	3,268	32	1	2	341	3,644	214	836	138	26	2,211	2,647	4,858
Continuing	1,040	4,062	4,181	6,712	809	16,804	151	2,061	1,045	128	9,668	10,521	20,189
Re-entry	85	104	94	191	123	597	46	77	51	7	374	404	778
Transfer	338	832	564	225	0	1,959	0	0	0	0	993	966	1,959
Resident Status													
Resident	4,115	4,545	4,485	6,694	1,151	20,990	343	2,215	518	148	11,518	12,696	24,214
Non-Resident	523	390	278	351	118	1,660	66	705	701	8	1,528	1,612	3,140
Reciprocity	93	95	77	85	4	354	2	54	15	5	200	230	430
Race/Ethnicity													
African American	487	462	396	441	84	1,870	41	166	50	5	817	1,315	2,132
Hispanic/Latino	497	403	336	413	52	1,701	23	127	50	4	864	1,041	1,905
American Indian	20	23	23	28	8	102	2	8	2	0	45	69	114
SE Asian American	204	206	158	231	11	810	3	23	6	6	425	423	848
Other Asian American	118	117	108	153	34	530	8	64	36	5	333	310	643
Hawaiian/Pacific Islander	6	4	5	3	1	19	0	1	0	1	9	12	21
White	2,979	3,502	3,574	5,525	958	16,538	283	2,253	664	138	9,581	10,295	19,876
Two or More Races	209	159	130	184	31	713	15	53	17	1	330	469	799
International	204	148	104	133	73	662	21	275	405	0	806	557	1,363
Unknown	7	6	6	19	21	59	15	4	4	1	36	47	83
Full-Time/Part-Time Status													
Part-Time	332	497	604	1,611	1,031	4,075	363	1,366	392	53	2,776	3,473	6,249
Full-Time	4,399	4,533	4,236	5,519	242	18,929	48	1,608	842	108	10,470	11,065	21,535
Age Range													
19 and Under	3,801	1,786	55	6	81	5,729	0	1	0	0	2,581	3,149	5,730
20-24	667	2,701	3,756	4,431	296	11,851	52	875	78	50	6,309	6,597	12,906
25-29	153	285	536	1,495	214	2,683	94	1,098	421	59	2,146	2,209	4,355
30 and Over	110	258	493	1,198	682	2,741	265	1,000	735	52	2,210	2,583	4,793
Gender													
Male	2,264	2,548	2,413	3,574	504	11,303	162	1,158	592	31	13,246	0	13,246
Female	2,467	2,482	2,427	3,556	769	11,701	249	1,816	642	130	0	14,538	14,538
Headcount History													
2012	5,048	5,352	4,929	7,356	1,490	24,175	416	3,170	1,233	120	13,801	15,313	29,114
2011	5,281	5,457	5,016	7,410	1,475	24,639	387	3,373	1,229	98	14,112	15,614	29,726
2010	5,441	5,738	5,170	7,287	1,603	25,239	412	3,579	1,153	87	14,482	15,988	30,470
2009	5,781	5,823	5,147	6,802	1,651	25,204	441	3,579	1,114	80	14,370	16,048	30,418
2008	5,730	5,787	4,958	6,434	1,390	24,299	472	3,390	1,023	31	13,604	15,611	29,215

**The University of Wisconsin System
UW-Eau Claire Fall 2013**

	Fresh.	Soph.	Junior	Senior	UG Spec.	UG Total	GR Spec.	Masters	Doctorate-Rsrch/ Schlrshp	Doctorate-Prof. Practice	Male	Female	Total
Total Headcount	2,504	2,251	2,178	3,211	244	10,388	74	390	0	55	4,459	6,448	10,907
Full-Time Equiv. (FTE)	2,433	2,166	2,062	2,871	120	9,652	17	188	0	38	4,047	5,848	9,895
Entrance Status													
New	1,962	53	2	0	209	2,226	39	79	0	24	822	1,546	2,368
Continuing	374	1,914	2,010	3,103	35	7,436	35	311	0	31	3,273	4,540	7,813
Re-entry	12	20	25	58	0	115	0	0	0	0	67	48	115
Transfer	156	264	141	50	0	611	0	0	0	0	297	314	611
Resident Status													
Resident	1,743	1,669	1,622	2,441	149	7,624	58	276	0	49	3,341	4,666	8,007
Non-Resident	162	80	60	114	92	508	11	95	0	0	279	335	614
Reciprocity	599	502	496	656	3	2,256	5	19	0	6	839	1,447	2,286
Race/Ethnicity													
African American	16	13	17	19	0	65	0	5	0	0	44	26	70
Hispanic/Latino	52	43	40	55	7	197	0	8	0	0	95	110	205
American Indian	11	9	7	14	1	42	0	1	0	0	20	23	43
SE Asian American	85	44	52	71	2	254	0	3	0	0	95	162	257
Other Asian American	18	16	14	33	5	86	4	8	0	1	43	56	99
Hawaiian/Pacific Islander	1	0	2	1	1	5	0	0	0	0	1	4	5
White	2,179	2,036	1,984	2,913	176	9,288	70	348	0	54	3,937	5,823	9,760
Two or More Races	47	44	36	43	2	172	0	5	0	0	82	95	177
International	93	46	25	41	49	254	0	10	0	0	133	131	264
Unknown	2	0	1	21	1	25	0	2	0	0	9	18	27
Full-Time/Part-Time Status													
Part-Time	29	91	126	469	198	913	74	308	0	29	512	812	1,324
Full-Time	2,475	2,160	2,052	2,742	46	9,475	0	82	0	26	3,947	5,636	9,583
Age Range													
19 and Under	2,280	1,268	83	3	122	3,756	0	0	0	0	1,352	2,404	3,756
20-24	196	904	1,941	2,693	56	5,790	6	62	0	2	2,566	3,294	5,860
25-29	12	36	78	270	17	413	15	130	0	20	269	309	578
30 and Over	16	43	76	245	49	429	53	198	0	33	272	441	713
Gender													
Male	965	957	903	1,345	83	4,253	25	176	0	5	4,459	0	4,459
Female	1,539	1,294	1,275	1,866	161	6,135	49	214	0	50	0	6,448	6,448
Headcount History													
2012	2,574	2,220	2,290	3,200	216	10,500	77	434	0	36	4,581	6,466	11,047
2011	2,523	2,363	2,219	3,292	182	10,579	138	490	0	27	4,633	6,601	11,234
2010	2,659	2,356	2,270	3,260	255	10,800	109	490	0	14	4,658	6,755	11,413
2009	2,561	2,399	2,171	3,264	222	10,617	91	508	0	0	4,607	6,609	11,216
2008	2,648	2,285	2,246	3,038	240	10,457	208	475	0	0	4,564	6,576	11,140

**The University of Wisconsin System
UW-Green Bay Fall 2013**

	Fresh.	Soph.	Junior	Senior	UG Spec.	UG Total	GR Spec.	Masters	Doctorate-Rsrch/ Schlrshp	Doctorate-Prof. Practice	Male	Female	Total
Total Headcount	959	1,159	1,376	2,257	693	6,444	39	184	0	0	2,310	4,357	6,667
Full-Time Equiv. (FTE)	904	1,017	1,118	1,718	181	4,938	7	106	0	0	1,803	3,248	5,051
Entrance Status													
New	791	15	3	0	611	1,420	11	70	0	0	495	1,006	1,501
Continuing	104	903	1,104	2,098	40	4,249	15	85	0	0	1,552	2,797	4,349
Re-entry	4	18	17	43	42	124	13	29	0	0	55	111	166
Transfer	60	223	252	116	0	651	0	0	0	0	208	443	651
Resident Status													
Resident	877	1,078	1,289	2,056	667	5,967	37	165	0	0	2,126	4,043	6,169
Non-Resident	68	67	77	178	26	416	2	17	0	0	164	271	435
Reciprocity	14	14	10	23	0	61	0	2	0	0	20	43	63
Race/Ethnicity													
African American	10	13	9	37	2	71	1	6	0	0	36	42	78
Hispanic/Latino	51	52	39	65	19	226	1	6	0	0	83	150	233
American Indian	10	10	20	37	13	90	3	5	0	0	30	68	98
SE Asian American	22	25	21	45	0	113	0	1	0	0	54	60	114
Other Asian American	6	6	7	25	5	49	0	2	0	0	16	35	51
Hawaiian/Pacific Islander	1	0	0	6	0	7	0	0	0	0	0	7	7
White	798	992	1,228	1,970	615	5,603	33	154	0	0	1,956	3,834	5,790
Two or More Races	33	38	24	35	14	144	0	4	0	0	48	100	148
International	26	22	24	24	19	115	1	5	0	0	75	46	121
Unknown	2	1	4	13	6	26	0	1	0	0	12	15	27
Full-Time/Part-Time Status													
Part-Time	70	179	382	831	668	2,130	38	127	0	0	687	1,608	2,295
Full-Time	889	980	994	1,426	25	4,314	1	57	0	0	1,623	2,749	4,372
Age Range													
19 and Under	850	590	27	2	587	2,056	0	0	0	0	646	1,410	2,056
20-24	60	402	939	1,237	40	2,678	2	32	0	0	1,044	1,668	2,712
25-29	14	61	161	370	20	626	4	50	0	0	245	435	680
30 and Over	35	106	249	648	45	1,083	33	101	0	0	374	843	1,217
Unknown	0	0	0	0	1	1	0	1	0	0	1	1	2
Gender													
Male	321	393	481	783	251	2,229	14	67	0	0	2,310	0	2,310
Female	638	766	895	1,474	442	4,215	25	117	0	0	0	4,357	4,357
Headcount History													
2012	1,098	1,200	1,445	2,330	538	6,611	53	126	0	0	2,381	4,409	6,790
2011	1,068	1,236	1,481	2,309	351	6,445	96	124	0	0	2,419	4,246	6,665
2010	1,109	1,347	1,453	2,176	304	6,389	95	152	0	0	2,408	4,228	6,636
2009	1,288	1,275	1,392	2,082	332	6,369	139	130	0	0	2,343	4,295	6,638
2008	1,220	1,274	1,305	1,943	346	6,088	48	150	0	0	2,226	4,060	6,286

For more information, see: <http://www.uwsa.edu/opar/ssb/>

*Excludes Students Studying Away

r_d200_tot

2/3/2014

**The University of Wisconsin System
UW-La Crosse Fall 2013**

	Fresh.	Soph.	Junior	Senior	UG Spec.	UG Total	GR Spec.	Masters	Doctorate-Rsrch/ Schlrshp	Doctorate-Prof. Practice	Male	Female	Total
Total Headcount	2,510	2,181	2,158	2,451	384	9,684	134	552	0	132	4,498	6,004	10,502
Full-Time Equiv. (FTE)	2,463	2,172	2,114	2,319	218	9,286	17	419	0	146	4,202	5,666	9,868
Entrance Status													
New	1,969	34	2	0	216	2,221	27	158	0	0	1,024	1,382	2,406
Continuing	382	1,863	2,009	2,414	140	6,808	53	388	0	132	3,120	4,261	7,381
Re-entry	8	18	20	22	28	96	54	6	0	0	60	96	156
Transfer	151	266	127	15	0	559	0	0	0	0	294	265	559
Resident Status													
Resident	2,024	1,716	1,777	2,032	239	7,788	130	331	0	96	3,614	4,731	8,345
Non-Resident	145	136	99	114	132	626	3	138	0	3	380	390	770
Reciprocity	341	329	282	305	13	1,270	1	83	0	33	504	883	1,387
Race/Ethnicity													
African American	21	12	17	17	1	68	1	10	0	0	44	35	79
Hispanic/Latino	85	67	39	61	11	263	0	11	0	2	133	143	276
American Indian	8	8	5	7	2	30	1	2	0	0	17	16	33
SE Asian American	47	30	33	43	7	160	1	6	0	0	85	82	167
Other Asian American	26	15	16	23	7	87	1	8	0	0	38	58	96
Hawaiian/Pacific Islander	1	2	2	2	0	7	0	0	0	0	6	1	7
White	2,190	1,936	1,986	2,203	260	8,575	126	469	0	129	3,909	5,390	9,299
Two or More Races	70	49	34	44	4	201	2	8	0	1	90	122	212
International	60	60	25	42	91	278	0	37	0	0	167	148	315
Unknown	2	2	1	9	1	15	2	1	0	0	9	9	18
Full-Time/Part-Time Status													
Part-Time	25	38	57	186	238	544	134	250	0	45	393	580	973
Full-Time	2,485	2,143	2,101	2,265	146	9,140	0	302	0	87	4,105	5,424	9,529
Age Range													
19 and Under	2,343	1,211	66	1	102	3,723	0	0	0	0	1,497	2,226	3,723
20-24	144	915	1,993	2,262	116	5,430	1	260	0	100	2,559	3,232	5,791
25-29	15	32	56	121	71	295	5	178	0	28	259	247	506
30 and Over	8	23	43	67	95	236	128	114	0	4	183	299	482
Gender													
Male	1,116	945	954	1,039	176	4,230	25	188	0	55	4,498	0	4,498
Female	1,394	1,236	1,204	1,412	208	5,454	109	364	0	77	0	6,004	6,004
Headcount History													
2012	2,436	2,210	1,930	2,551	388	9,515	159	573	0	133	4,288	6,092	10,380
2011	2,522	1,994	1,900	2,376	419	9,211	198	716	0	133	4,226	6,032	10,258
2010	2,384	1,983	1,811	2,404	491	9,073	153	786	0	123	4,221	5,914	10,135
2009	2,298	1,858	1,766	2,481	468	8,871	152	870	0	116	4,107	5,902	10,009
2008	2,279	1,855	1,819	2,386	302	8,641	79	1,036	0	124	4,048	5,832	9,880

**The University of Wisconsin System
UW-Oshkosh Fall 2013**

	Fresh.	Soph.	Junior	Senior	UG Spec.	UG Total	GR Spec.	Masters	Doctorate-Rsrch/ Schlrshp	Doctorate-Prof. Practice	Male	Female	Total
Total Headcount	2,661	2,028	2,334	3,596	2,004	12,623	334	896	0	49	5,495	8,407	13,902
Full-Time Equiv. (FTE)	2,610	1,928	2,094	3,030	649	10,310	69	415	0	36	4,491	6,339	10,829
Entrance Status													
New	1,734	13	0	1	1,952	3,700	7	248	0	27	1,345	2,637	3,982
Continuing	689	1,674	1,975	3,369	51	7,758	304	641	0	22	3,658	5,067	8,725
Re-entry	16	35	39	68	1	159	23	7	0	0	80	109	189
Transfer	222	306	320	158	0	1,006	0	0	0	0	412	594	1,006
Resident Status													
Resident	2,501	1,919	2,251	3,438	1,963	12,072	326	839	0	47	5,236	8,048	13,284
Non-Resident	142	100	71	136	40	489	7	52	0	2	232	318	550
Reciprocity	18	9	12	22	1	62	1	5	0	0	27	41	68
Race/Ethnicity													
African American	79	47	38	47	12	223	3	16	0	1	116	127	243
Hispanic/Latino	96	70	62	84	57	369	2	22	0	0	164	229	393
American Indian	13	12	23	47	2	97	2	18	0	0	31	86	117
SE Asian American	82	66	76	107	19	350	1	8	0	0	133	226	359
Other Asian American	18	12	9	24	47	110	2	13	0	2	39	88	127
Hawaiian/Pacific Islander	1	1	1	2	3	8	0	0	0	0	3	5	8
White	2,282	1,760	2,080	3,212	1,747	11,081	322	791	0	43	4,825	7,412	12,237
Two or More Races	74	36	29	52	36	227	0	1	0	1	96	133	229
International	15	23	16	13	26	93	1	27	0	1	64	58	122
Unknown	1	1	0	8	55	65	1	0	0	1	24	43	67
Full-Time/Part-Time Status													
Part-Time	128	179	386	820	1,953	3,466	329	745	0	27	1,513	3,054	4,567
Full-Time	2,533	1,849	1,948	2,776	51	9,157	5	151	0	22	3,982	5,353	9,335
Age Range													
19 and Under	2,301	771	28	0	1,932	5,032	0	0	0	0	1,745	3,287	5,032
20-24	245	1,089	1,883	2,453	34	5,704	14	121	0	10	2,588	3,261	5,849
25-29	37	70	174	511	7	799	48	278	0	18	491	652	1,143
30 and Over	78	97	249	632	31	1,087	271	497	0	21	669	1,207	1,876
Unknown	0	1	0	0	0	1	1	0	0	0	2	0	2
Gender													
Male	1,146	886	1,037	1,460	571	5,100	69	323	0	3	5,495	0	5,495
Female	1,515	1,142	1,297	2,136	1,433	7,523	265	573	0	46	0	8,407	8,407
Headcount History													
2012	2,729	2,163	2,325	3,556	1,611	12,384	246	856	0	33	5,494	8,025	13,519
2011	2,854	2,097	2,389	3,453	1,480	12,273	282	958	0	0	5,460	8,053	13,513
2010	2,951	2,116	2,345	3,405	1,413	12,230	420	979	0	0	5,501	8,128	13,629
2009	2,859	2,044	2,244	3,292	1,233	11,672	494	1,026	0	0	5,220	7,972	13,192
2008	2,754	1,974	2,124	3,226	1,315	11,393	321	1,039	0	0	5,028	7,725	12,753

For more information, see: <http://www.uwsa.edu/opar/ssb/>

*Excludes Students Studying Away

r_d200_tot

2/3/2014

**The University of Wisconsin System
UW-Parkside Fall 2013**

	Fresh.	Soph.	Junior	Senior	UG Spec.	UG Total	GR Spec.	Masters	Doctorate-Rsrch/ Schlrshp	Doctorate-Prof. Practice	Male	Female	Total
Total Headcount	1,211	1,013	857	1,283	125	4,489	1	127	0	0	2,240	2,377	4,617
Full-Time Equiv. (FTE)	1,043	855	708	991	33	3,630	0	64	0	0	1,800	1,895	3,695
Entrance Status													
New	759	3	0	0	61	823	0	35	0	0	388	470	858
Continuing	305	835	704	1,176	45	3,065	1	89	0	0	1,566	1,589	3,155
Re-entry	29	23	21	53	19	145	0	3	0	0	68	80	148
Transfer	118	152	132	54	0	456	0	0	0	0	218	238	456
Resident Status													
Resident	1,016	906	723	1,085	113	3,843	1	97	0	0	1,934	2,007	3,941
Non-Resident	194	104	132	196	12	638	0	30	0	0	302	366	668
Reciprocity	1	3	2	2	0	8	0	0	0	0	4	4	8
Race/Ethnicity													
African American	129	85	81	107	4	406	0	7	0	0	163	250	413
Hispanic/Latino	146	131	100	134	6	517	0	4	0	0	249	272	521
American Indian	1	1	5	1	0	8	0	0	0	0	4	4	8
SE Asian American	14	4	9	8	0	35	0	0	0	0	15	20	35
Other Asian American	25	20	15	30	4	94	0	5	0	0	57	42	99
Hawaiian/Pacific Islander	4	1	3	2	0	10	0	0	0	0	4	6	10
White	801	707	598	936	105	3,147	1	84	0	0	1,603	1,629	3,232
Two or More Races	53	45	34	41	1	174	0	2	0	0	76	100	176
International	38	16	9	15	2	80	0	25	0	0	62	43	105
Unknown	0	3	3	9	3	18	0	0	0	0	7	11	18
Full-Time/Part-Time Status													
Part-Time	186	202	206	440	123	1,157	1	94	0	0	572	680	1,252
Full-Time	1,025	811	651	843	2	3,332	0	33	0	0	1,668	1,697	3,365
Age Range													
19 and Under	944	339	15	1	50	1,349	0	0	0	0	602	747	1,349
20-24	179	524	609	733	24	2,069	0	28	0	0	1,018	1,079	2,097
25-29	50	75	110	249	12	496	0	40	0	0	289	247	536
30 and Over	38	75	123	300	39	575	1	59	0	0	331	304	635
Gender													
Male	586	484	404	636	56	2,166	0	74	0	0	2,240	0	2,240
Female	625	529	453	647	69	2,323	1	53	0	0	0	2,377	2,377
Headcount History													
2012	1,175	954	865	1,323	284	4,601	46	122	0	0	2,283	2,486	4,769
2011	1,242	999	969	1,298	258	4,766	7	114	0	0	2,327	2,560	4,887
2010	1,345	1,078	931	1,395	266	5,015	19	126	0	0	2,415	2,745	5,160
2009	1,515	1,077	923	1,312	326	5,153	30	120	0	0	2,393	2,910	5,303
2008	1,527	1,067	920	1,243	288	5,045	26	96	0	0	2,349	2,818	5,167

**The University of Wisconsin System
UW-Platteville Fall 2013**

	Fresh.	Soph.	Junior	Senior	UG Spec.	UG Total	GR Spec.	Masters	Doctorate-Rsrch/ Schlrshp	Doctorate-Prof. Practice	Male	Female	Total
Total Headcount	2,335	1,626	1,676	2,091	139	7,867	108	742	0	0	5,587	3,130	8,717
Full-Time Equiv. (FTE)	2,337	1,586	1,593	1,857	56	7,428	27	308	0	0	4,993	2,771	7,764
Entrance Status													
New	1,609	26	7	4	109	1,755	33	143	0	0	1,245	686	1,931
Continuing	592	1,414	1,479	2,022	28	5,535	73	597	0	0	3,979	2,226	6,205
Re-entry	13	24	19	26	2	84	2	2	0	0	59	29	88
Transfer	121	162	171	39	0	493	0	0	0	0	304	189	493
Resident Status													
Resident	1,759	1,248	1,276	1,616	105	6,004	74	404	0	0	4,117	2,365	6,482
Non-Resident	541	349	372	445	34	1,741	34	336	0	0	1,384	727	2,111
Reciprocity	35	29	28	30	0	122	0	2	0	0	86	38	124
Race/Ethnicity													
African American	43	26	16	21	4	110	4	71	0	0	105	80	185
Hispanic/Latino	80	54	34	31	4	203	1	15	0	0	138	81	219
American Indian	4	2	6	2	1	15	0	5	0	0	7	13	20
SE Asian American	18	13	6	11	0	48	0	4	0	0	36	16	52
Other Asian American	16	8	7	8	2	41	0	8	0	0	28	21	49
Hawaiian/Pacific Islander	4	0	1	2	0	7	0	2	0	0	6	3	9
White	2,094	1,476	1,569	1,968	101	7,208	88	536	0	0	5,052	2,780	7,832
Two or More Races	46	29	17	19	1	112	0	5	0	0	63	54	117
International	28	15	13	18	22	96	14	81	0	0	123	68	191
Unknown	2	3	7	11	4	27	1	15	0	0	29	14	43
Full-Time/Part-Time Status													
Part-Time	65	103	187	374	116	845	98	649	0	0	953	639	1,592
Full-Time	2,270	1,523	1,489	1,717	23	7,022	10	93	0	0	4,634	2,491	7,125
Age Range													
19 and Under	2,093	640	33	3	17	2,786	0	0	0	0	1,803	983	2,786
20-24	190	886	1,457	1,695	59	4,287	7	61	0	0	2,880	1,475	4,355
25-29	15	42	86	219	18	380	18	190	0	0	369	219	588
30 and Over	37	58	100	174	45	414	83	491	0	0	535	453	988
Gender													
Male	1,537	1,070	1,075	1,368	80	5,130	45	412	0	0	5,587	0	5,587
Female	798	556	601	723	59	2,737	63	330	0	0	0	3,130	3,130
Headcount History													
2012	2,441	1,636	1,573	2,066	124	7,840	152	686	0	0	5,524	3,154	8,678
2011	2,404	1,495	1,532	1,917	112	7,460	1	801	0	0	5,240	3,022	8,262
2010	2,361	1,497	1,358	1,887	129	7,232	33	663	0	0	5,027	2,901	7,928
2009	2,425	1,349	1,336	1,763	98	6,971	11	821	0	0	4,849	2,954	7,803
2008	2,306	1,294	1,248	1,563	201	6,612	274	626	0	0	4,599	2,913	7,512

**The University of Wisconsin System
UW-River Falls Fall 2013**

	Fresh.	Soph.	Junior	Senior	UG Spec.	UG Total	GR Spec.	Masters	Doctorate-Rsrch/ Schlrshp	Doctorate-Prof. Practice	Male	Female	Total
Total Headcount	1,443	1,225	1,197	1,627	295	5,787	11	373	0	0	2,411	3,760	6,171
Full-Time Equiv. (FTE)	1,360	1,179	1,134	1,443	177	5,292	3	209	0	0	2,124	3,379	5,503
Entrance Status													
New	1,045	21	5	0	182	1,253	4	83	0	0	499	841	1,340
Continuing	293	1,021	1,058	1,573	98	4,043	3	285	0	0	1,682	2,649	4,331
Re-entry	9	19	16	35	15	94	4	5	0	0	52	51	103
Transfer	96	164	118	19	0	397	0	0	0	0	178	219	397
Resident Status													
Resident	706	596	566	769	155	2,792	11	165	0	0	1,178	1,790	2,968
Non-Resident	55	40	34	39	95	263	0	60	0	0	152	171	323
Reciprocity	682	589	597	819	45	2,732	0	148	0	0	1,081	1,799	2,880
Race/Ethnicity													
African American	27	20	16	11	0	74	0	13	0	0	51	36	87
Hispanic/Latino	45	23	27	33	5	133	0	5	0	0	51	87	138
American Indian	4	4	4	7	0	19	0	0	0	0	7	12	19
SE Asian American	33	22	15	34	3	107	0	8	0	0	56	59	115
Other Asian American	10	6	9	9	3	37	0	4	0	0	19	22	41
Hawaiian/Pacific Islander	2	1	1	1	0	5	0	0	0	0	2	3	5
White	1,258	1,108	1,087	1,489	200	5,142	10	334	0	0	2,102	3,384	5,486
Two or More Races	46	20	20	21	3	110	0	4	0	0	46	68	114
International	17	17	15	14	79	142	0	5	0	0	67	80	147
Unknown	1	4	3	8	2	18	1	0	0	0	10	9	19
Full-Time/Part-Time Status													
Part-Time	34	60	81	235	167	577	11	246	0	0	311	523	834
Full-Time	1,409	1,165	1,116	1,392	128	5,210	0	127	0	0	2,100	3,237	5,337
Age Range													
19 and Under	1,247	535	25	2	78	1,887	0	0	0	0	658	1,229	1,887
20-24	151	617	1,036	1,321	108	3,233	0	93	0	0	1,313	2,013	3,326
25-29	22	35	66	163	40	326	1	118	0	0	221	224	445
30 and Over	23	38	70	141	69	341	10	162	0	0	219	294	513
Gender													
Male	598	478	462	645	108	2,291	5	115	0	0	2,411	0	2,411
Female	845	747	735	982	187	3,496	6	258	0	0	0	3,760	3,760
Headcount History													
2012	1,585	1,203	1,292	1,779	187	6,046	32	369	0	0	2,510	3,937	6,447
2011	1,684	1,338	1,342	1,792	168	6,324	30	434	0	0	2,723	4,065	6,788
2010	1,775	1,401	1,258	1,725	214	6,373	42	487	0	0	2,777	4,125	6,902
2009	1,884	1,316	1,292	1,552	178	6,222	42	464	0	0	2,675	4,053	6,728
2008	1,867	1,277	1,184	1,552	170	6,050	71	434	0	0	2,649	3,906	6,555

**The University of Wisconsin System
UW-Stevens Point Fall 2013**

	Fresh.	Soph.	Junior	Senior	UG Spec.	UG Total	GR Spec.	Masters	Doctorate-Rsrch/ Schlrshp	Doctorate-Prof. Practice	Male	Female	Total
Total Headcount	2,314	1,785	1,996	3,018	179	9,292	104	228	0	19	4,542	5,101	9,643
Full-Time Equiv. (FTE)	2,224	1,717	1,880	2,735	53	8,609	26	157	0	14	4,162	4,644	8,806
Entrance Status													
New	1,616	18	2	0	121	1,757	57	86	0	5	872	1,033	1,905
Continuing	473	1,447	1,707	2,884	41	6,552	31	138	0	14	3,183	3,552	6,735
Re-entry	26	31	31	65	17	170	16	4	0	0	93	97	190
Transfer	199	289	256	69	0	813	0	0	0	0	394	419	813
Resident Status													
Resident	2,011	1,585	1,786	2,692	157	8,231	85	156	0	11	3,933	4,550	8,483
Non-Resident	232	136	134	178	22	702	19	56	0	3	413	367	780
Reciprocity	71	64	76	148	0	359	0	16	0	5	196	184	380
Race/Ethnicity													
African American	77	26	17	20	19	159	1	5	0	0	101	64	165
Hispanic/Latino	84	52	70	59	4	269	1	3	0	1	125	149	274
American Indian	20	6	9	10	0	45	0	4	0	0	24	25	49
SE Asian American	52	25	26	52	1	156	0	1	0	0	72	85	157
Other Asian American	16	11	11	19	3	60	0	2	0	0	28	34	62
Hawaiian/Pacific Islander	2	0	1	4	0	7	0	1	0	0	2	6	8
White	1,953	1,598	1,789	2,751	144	8,235	98	201	0	18	4,019	4,533	8,552
Two or More Races	51	33	39	47	1	171	0	2	0	0	73	100	173
International	58	32	29	40	7	166	4	6	0	0	87	89	176
Unknown	1	2	5	16	0	24	0	3	0	0	11	16	27
Full-Time/Part-Time Status													
Part-Time	34	64	112	309	160	679	103	123	0	5	360	550	910
Full-Time	2,280	1,721	1,884	2,709	19	8,613	1	105	0	14	4,182	4,551	8,733
Age Range													
19 and Under	1,991	812	59	3	66	2,931	0	0	0	0	1,310	1,621	2,931
20-24	275	881	1,732	2,444	29	5,361	6	86	0	11	2,641	2,823	5,464
25-29	23	43	109	336	18	529	29	69	0	7	348	286	634
30 and Over	25	49	96	235	66	471	69	73	0	1	243	371	614
Gender													
Male	1,143	838	948	1,458	72	4,459	14	64	0	5	4,542	0	4,542
Female	1,171	947	1,048	1,560	107	4,833	90	164	0	14	0	5,101	5,101
Headcount History													
2012	2,286	1,908	2,014	2,910	178	9,296	139	226	0	16	4,545	5,132	9,677
2011	2,302	1,928	1,901	2,825	129	9,085	123	254	0	15	4,385	5,092	9,477
2010	2,433	1,874	1,886	2,733	136	9,062	174	249	0	15	4,419	5,081	9,500
2009	2,369	1,799	1,752	2,735	149	8,804	148	242	0	15	4,317	4,892	9,209
2008	2,389	1,714	1,839	2,641	134	8,717	191	249	0	6	4,192	4,971	9,163

**The University of Wisconsin System
UW-Stout Fall 2013**

	Fresh.	Soph.	Junior	Senior	UG Spec.	UG Total	GR Spec.	Masters	Doctorate-Rsrch/ Schlrshp	Doctorate-Prof. Practice	Male	Female	Total
Total Headcount	2,116	1,505	1,750	2,684	125	8,180	330	765	0	11	4,687	4,599	9,286
Full-Time Equiv. (FTE)	2,026	1,399	1,508	2,075	56	7,064	115	410	0	2	3,864	3,727	7,591
Entrance Status													
New	1,548	23	2	0	81	1,654	170	230	0	10	955	1,109	2,064
Continuing	415	1,268	1,474	2,509	36	5,702	160	535	0	1	3,254	3,144	6,398
Re-entry	13	14	19	41	8	95	0	0	0	0	62	33	95
Transfer	140	200	255	134	0	729	0	0	0	0	416	313	729
Resident Status													
Resident	1,359	956	1,173	1,899	75	5,462	159	492	0	11	3,234	2,890	6,124
Non-Resident	132	74	127	114	45	492	168	182	0	0	414	428	842
Reciprocity	625	475	450	671	5	2,226	3	91	0	0	1,039	1,281	2,320
Race/Ethnicity													
African American	36	17	19	27	1	100	16	24	0	0	79	61	140
Hispanic/Latino	55	40	35	47	3	180	5	18	0	0	96	107	203
American Indian	8	4	7	8	0	27	1	5	0	0	10	23	33
SE Asian American	56	40	41	71	0	208	0	19	0	0	117	110	227
Other Asian American	12	12	11	20	0	55	5	6	0	0	24	42	66
Hawaiian/Pacific Islander	7	0	1	2	0	10	1	1	0	0	7	5	12
White	1,851	1,333	1,532	2,406	80	7,202	265	604	0	11	4,063	4,019	8,082
Two or More Races	38	23	30	38	0	129	0	11	0	0	73	67	140
International	51	31	66	35	41	224	6	65	0	0	191	104	295
Unknown	2	5	8	30	0	45	31	12	0	0	27	61	88
Full-Time/Part-Time Status													
Part-Time	48	105	288	873	87	1,401	315	512	0	11	1,048	1,191	2,239
Full-Time	2,068	1,400	1,462	1,811	38	6,779	15	253	0	0	3,639	3,408	7,047
Age Range													
19 and Under	1,842	633	25	3	13	2,516	0	0	0	0	1,231	1,285	2,516
20-24	227	790	1,426	1,825	46	4,314	17	167	0	0	2,363	2,135	4,498
25-29	27	30	117	354	22	550	48	203	0	0	455	346	801
30 and Over	20	52	182	502	44	800	265	395	0	11	638	833	1,471
Gender													
Male	1,136	789	915	1,461	59	4,360	39	282	0	6	4,687	0	4,687
Female	980	716	835	1,223	66	3,820	291	483	0	5	0	4,599	4,599
Headcount History													
2012	2,127	1,480	1,662	2,798	203	8,270	333	644	0	0	4,592	4,655	9,247
2011	2,148	1,496	1,744	2,783	182	8,353	276	727	0	0	4,634	4,722	9,356
2010	2,218	1,534	1,677	2,755	117	8,301	307	731	0	0	4,652	4,687	9,339
2009	2,176	1,447	1,642	2,632	76	7,973	274	770	0	0	4,462	4,555	9,017
2008	2,170	1,478	1,644	2,377	100	7,769	305	765	0	0	4,373	4,466	8,839

**The University of Wisconsin System
UW-Superior Fall 2013**

	Fresh.	Soph.	Junior	Senior	UG Spec.	UG Total	GR Spec.	Masters	Doctorate-Rsrch/ Schlrshp	Doctorate-Prof. Practice	Male	Female	Total
Total Headcount	492	448	541	924	117	2,522	2	132	0	0	1,049	1,607	2,656
Full-Time Equiv. (FTE)	457	399	467	771	35	2,129	1	73	0	0	908	1,294	2,202
Entrance Status													
New	305	18	2	0	83	408	0	30	0	0	163	275	438
Continuing	101	327	388	848	24	1,688	2	100	0	0	719	1,071	1,790
Re-entry	9	18	21	28	10	86	0	2	0	0	37	51	88
Transfer	77	85	130	48	0	340	0	0	0	0	130	210	340
Resident Status													
Resident	261	234	256	450	93	1,294	0	59	0	0	481	872	1,353
Non-Resident	66	58	51	82	13	270	0	9	0	0	132	147	279
Reciprocity	165	156	234	392	11	958	2	64	0	0	436	588	1,024
Race/Ethnicity													
African American	9	11	17	12	0	49	0	0	0	0	33	16	49
Hispanic/Latino	18	8	8	16	1	51	0	4	0	0	26	29	55
American Indian	5	10	19	30	2	66	0	3	0	0	20	49	69
SE Asian American	1	1	1	4	0	7	0	0	0	0	3	4	7
Other Asian American	5	4	3	5	1	18	0	2	0	0	4	16	20
Hawaiian/Pacific Islander	1	0	0	1	0	2	0	0	0	0	0	2	2
White	394	364	452	801	101	2,112	2	115	0	0	856	1,373	2,229
Two or More Races	15	15	20	14	4	68	0	2	0	0	24	46	70
International	42	33	20	38	6	139	0	2	0	0	74	67	141
Unknown	2	2	1	3	2	10	0	4	0	0	9	5	14
Full-Time/Part-Time Status													
Part-Time	27	61	105	205	107	505	2	81	0	0	173	415	588
Full-Time	465	387	436	719	10	2,017	0	51	0	0	876	1,192	2,068
Age Range													
19 and Under	353	147	13	2	50	565	0	0	0	0	214	351	565
20-24	95	208	342	524	22	1,191	0	16	0	0	532	675	1,207
25-29	24	26	76	157	10	293	0	27	0	0	139	181	320
30 and Over	20	67	110	241	35	473	2	89	0	0	164	400	564
Gender													
Male	209	194	214	369	28	1,014	0	35	0	0	1,049	0	1,049
Female	283	254	327	555	89	1,508	2	97	0	0	0	1,607	1,607
Headcount History													
2012	543	435	541	941	90	2,550	10	140	0	0	1,124	1,576	2,700
2011	540	456	551	1,011	97	2,655	8	162	0	0	1,212	1,613	2,825
2010	614	485	559	908	65	2,631	30	195	0	0	1,195	1,661	2,856
2009	623	440	574	879	60	2,576	9	209	0	0	1,167	1,627	2,794
2008	523	423	489	919	86	2,440	44	205	0	0	1,112	1,577	2,689

**The University of Wisconsin System
UW-Whitewater Fall 2013**

	Fresh.	Soph.	Junior	Senior	UG Spec.	UG Total	GR Spec.	Masters	Doctorate-Rsrch/ Schlrshp	Doctorate-Prof. Practice	Male	Female	Total
Total Headcount	2,357	2,798	2,328	2,930	439	10,852	82	1,081	0	0	5,874	6,141	12,015
Full-Time Equiv. (FTE)	2,294	2,712	2,241	2,654	174	10,075	29	634	0	0	5,250	5,487	10,737
Entrance Status													
New	2,083	24	1	0	356	2,464	41	222	0	0	1,303	1,424	2,727
Continuing	159	2,419	2,059	2,846	80	7,563	33	850	0	0	4,149	4,297	8,446
Re-entry	10	20	22	39	3	94	8	9	0	0	66	45	111
Transfer	105	335	246	45	0	731	0	0	0	0	356	375	731
Resident Status													
Resident	1,934	2,350	2,018	2,560	396	9,258	77	861	0	0	5,009	5,187	10,196
Non-Resident	408	433	297	358	43	1,539	5	212	0	0	838	918	1,756
Reciprocity	15	15	13	12	0	55	0	8	0	0	27	36	63
Race/Ethnicity													
African American	142	147	93	116	1	499	2	50	0	0	280	271	551
Hispanic/Latino	122	108	98	103	23	454	2	34	0	0	223	267	490
American Indian	4	6	7	3	0	20	0	8	0	0	14	14	28
SE Asian American	16	30	15	29	1	91	0	11	0	0	55	47	102
Other Asian American	23	21	20	18	6	88	0	26	0	0	54	60	114
Hawaiian/Pacific Islander	1	0	2	2	1	6	0	3	0	0	7	2	9
White	1,960	2,377	2,025	2,578	368	9,308	77	843	0	0	5,004	5,224	10,228
Two or More Races	69	89	54	42	5	259	0	4	0	0	112	151	263
International	17	20	12	31	33	113	1	90	0	0	114	90	204
Unknown	3	0	2	8	1	14	0	12	0	0	11	15	26
Full-Time/Part-Time Status													
Part-Time	34	100	134	375	345	988	74	670	0	0	825	907	1,732
Full-Time	2,323	2,698	2,194	2,555	94	9,864	8	411	0	0	5,049	5,234	10,283
Age Range													
19 and Under	2,198	1,454	28	3	242	3,925	0	0	0	0	1,845	2,080	3,925
20-24	138	1,229	2,051	2,472	64	5,954	5	297	0	0	3,109	3,147	6,256
25-29	10	64	130	238	59	501	14	350	0	0	459	406	865
30 and Over	11	51	119	217	74	472	63	434	0	0	461	508	969
Gender													
Male	1,187	1,401	1,188	1,371	181	5,328	22	524	0	0	5,874	0	5,874
Female	1,170	1,397	1,140	1,559	258	5,524	60	557	0	0	0	6,141	6,141
Headcount History													
2012	2,413	2,837	2,292	2,888	322	10,752	101	1,178	0	0	5,927	6,104	12,031
2011	2,256	2,724	2,248	2,734	266	10,228	101	1,314	0	0	5,770	5,873	11,643
2010	2,266	2,870	2,170	2,560	278	10,144	101	1,312	0	0	5,817	5,740	11,557
2009	2,224	2,780	2,032	2,446	248	9,730	128	1,281	0	0	5,514	5,625	11,139
2008	2,433	2,627	1,962	2,387	212	9,621	155	1,186	0	0	5,436	5,526	10,962

**The University of Wisconsin System
UW Colleges Fall 2013**

	Fresh.	Soph.	Junior	Senior	UG Spec.	UG Total	GR Spec.	Masters	Doctorate-Rsrch/ Schlrshp	Doctorate-Prof. Practice	Male	Female	Total
Total Headcount	7,943	3,848	45	2	2,220	14,058	0	0	0	0	6,485	7,573	14,058
Full-Time Equiv. (FTE)	6,444	2,600	18	1	655	9,718	0	0	0	0	4,675	5,042	9,718
Entrance Status													
New	4,172	22	0	0	1,495	5,689	0	0	0	0	2,628	3,061	5,689
Continuing	2,858	3,353	16	0	571	6,798	0	0	0	0	3,109	3,689	6,798
Re-entry	291	207	23	1	154	676	0	0	0	0	332	344	676
Transfer	622	266	6	1	0	895	0	0	0	0	416	479	895
Resident Status													
Resident	7,662	3,766	45	2	1,974	13,449	0	0	0	0	6,194	7,255	13,449
Non-Resident	185	50	0	0	215	450	0	0	0	0	226	224	450
Reciprocity	96	32	0	0	31	159	0	0	0	0	65	94	159
Race/Ethnicity													
African American	205	43	1	0	39	288	0	0	0	0	166	122	288
Hispanic/Latino	492	162	1	0	55	710	0	0	0	0	318	392	710
American Indian	42	9	0	0	10	61	0	0	0	0	25	36	61
SE Asian American	284	93	0	0	14	391	0	0	0	0	175	216	391
Other Asian American	75	31	0	0	39	145	0	0	0	0	70	75	145
Hawaiian/Pacific Islander	10	5	0	0	3	18	0	0	0	0	7	11	18
White	6,611	3,419	41	2	1,996	12,069	0	0	0	0	5,546	6,523	12,069
Two or More Races	181	73	2	0	29	285	0	0	0	0	135	150	285
International	34	9	0	0	15	58	0	0	0	0	30	28	58
Unknown	9	4	0	0	20	33	0	0	0	0	13	20	33
Full-Time/Part-Time Status													
Part-Time	1,952	1,901	45	2	2,143	6,043	0	0	0	0	2,489	3,554	6,043
Full-Time	5,991	1,947	0	0	77	8,015	0	0	0	0	3,996	4,019	8,015
Age Range													
19 and Under	5,089	705	0	0	1,154	6,948	0	0	0	0	3,122	3,826	6,948
20-24	1,699	1,884	16	2	318	3,919	0	0	0	0	1,925	1,994	3,919
25-29	529	539	6	0	210	1,284	0	0	0	0	623	661	1,284
30 and Over	626	720	23	0	534	1,903	0	0	0	0	812	1,091	1,903
Unknown	0	0	0	0	4	4	0	0	0	0	3	1	4
Gender													
Male	3,837	1,748	15	2	883	6,485	0	0	0	0	6,485	0	6,485
Female	4,106	2,100	30	0	1,337	7,573	0	0	0	0	0	7,573	7,573
Headcount History													
2012	8,136	3,933	0	0	2,038	14,107	0	0	0	0	6,533	7,574	14,107
2011	8,511	3,991	0	0	2,068	14,570	0	0	0	0	6,798	7,772	14,570
2010	8,570	3,777	0	0	2,038	14,385	0	0	0	0	6,824	7,561	14,385
2009	8,238	3,465	0	0	2,086	13,789	0	0	0	0	6,498	7,291	13,789
2008	8,045	3,392	0	0	1,838	13,275	0	0	0	0	6,190	7,085	13,275

For more information, see: <http://www.uwsa.edu/opar/ssb/>

*Excludes Students Studying Away

r_d200_tot

2/3/2014