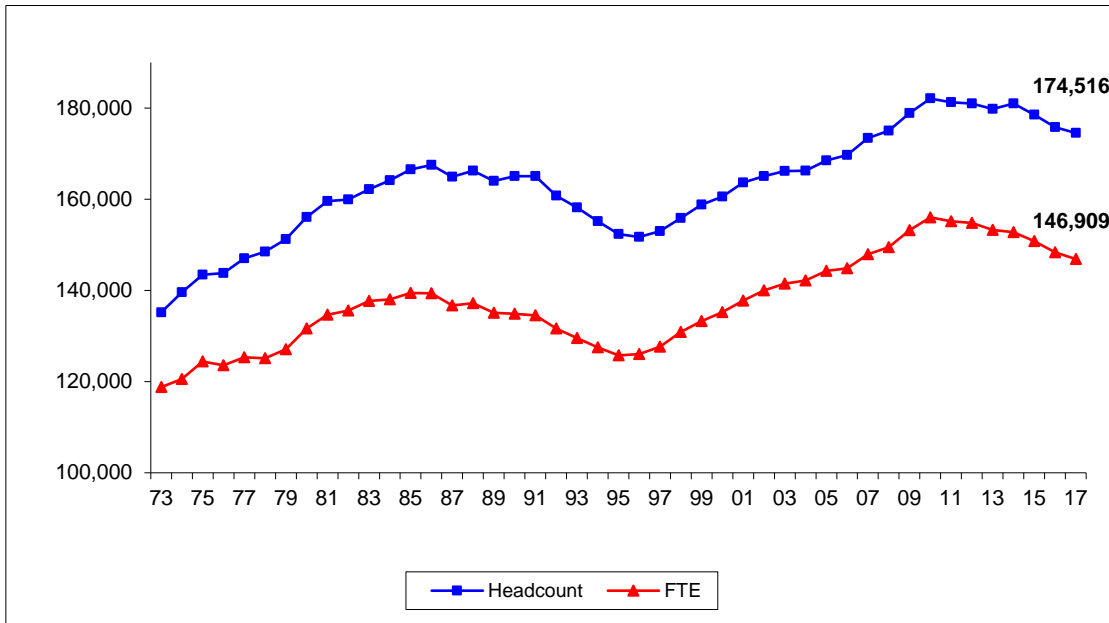




# Informational Memorandum

## Trends in Enrollment: Fall 2017 Update

**UW System Headcount and FTE Enrollments  
Fall 1973 to Fall 2017**



- Fall 2017 headcount enrollment ..... 174,516**  
 Down 1,309 (0.7%) from fall 2016.
- Fall 2017 full-time equivalent (FTE) enrollment ..... 146,909**  
 Down 1,418 (1.0%) from fall 2016.
- Appendices provide a detailed breakdown of student enrollment characteristics by UW institution.

**OVERALL ENROLLMENT**

In fall 2017, the UW System headcount enrollment was 174,516. Fall 2017 headcount enrollment decreased by 1,309, or 0.7 percent, from fall 2016 (Table 1). Since peak enrollment in fall 2010, enrollment in the UW System is down by 7,574, or 4.2 percent. Seven of the 14 UW institutions have higher enrollment in fall 2017 than fall 2010. Madison (1,270 more enrollments), Whitewater (873), Platteville (630), Green Bay (542), La Crosse (399), Oshkosh (306), and Stout (62) all saw increased enrollment. Superior (266), Eau Claire (588), River Falls (792), Parkside (852), Stevens Point (1,292), UW Colleges (2,777) and Milwaukee (5,089) each saw overall enrollment decline from peak system enrollment in fall 2010.

**Table 1**  
**The University of Wisconsin System**  
**Historical Profile of Headcount Enrollment, Fall 2008 to Fall 2017**

	2008	2009	2010	2011	2012	2013	2014	2015	2016	2017
MSN	41,620	41,654	42,180	42,065	42,463	42,903	42,865	43,064	42,994	43,450
MIL	29,215	30,418	30,470	29,726	29,114	27,784	28,013	27,119	26,011	25,381
EAU	11,140	11,216	11,413	11,234	11,047	10,907	10,692	10,531	10,705	10,825
GBY	6,286	6,638	6,636	6,665	6,790	6,667	6,921	6,779	7,030	7,178
LAC	9,880	10,009	10,135	10,258	10,380	10,502	10,664	10,486	10,624	10,534
OSH	12,753	13,192	13,629	13,513	13,519	13,902	14,542	14,059	13,955	13,935
PKS	5,167	5,303	5,160	4,887	4,769	4,617	4,584	4,443	4,399	4,308
PLT	7,512	7,803	7,928	8,262	8,678	8,717	8,901	8,950	8,782	8,558
RVF	6,555	6,728	6,902	6,788	6,447	6,171	6,184	5,958	5,931	6,110
STP	9,163	9,209	9,500	9,477	9,677	9,643	9,322	9,255	8,627	8,208
STO	8,839	9,017	9,339	9,356	9,247	9,286	9,371	9,535	9,619	9,401
SUP	2,689	2,794	2,856	2,825	2,700	2,656	2,589	2,489	2,487	2,590
WTW	10,962	11,139	11,557	11,643	12,031	12,015	12,159	12,351	12,628	12,430
UWC	13,275	13,789	14,385	14,570	14,107	14,058	14,172	13,552	12,033	11,608
<b>UW System</b>	<b>175,056</b>	<b>178,909</b>	<b>182,090</b>	<b>181,269</b>	<b>180,969</b>	<b>179,828</b>	<b>180,979</b>	<b>178,571</b>	<b>175,825</b>	<b>174,516</b>

In fall 2017, the UW System enrolled 146,909 FTE students, 9,130 fewer FTE students than fall 2010. Fall 2017 full-time equivalent (FTE) enrollment decreased by 1,418, or 1.0 percent, compared to fall 2016 (Table 2). FTE enrollment has dropped in seven straight years after continually increasing between 2008 and 2010.

**Table 2**  
**The University of Wisconsin System**  
**Historical Profile of FTE Enrollment, Fall 2008 to Fall 2017**

	2008	2009	2010	2011	2012	2013	2014	2015	2016	2017
MSN	37,263	37,622	38,185	37,914	38,385	38,498	38,373	38,832	38,795	39,219
MIL	23,746	24,908	25,035	24,511	23,989	23,095	23,108	22,491	21,764	21,324
EAU	10,016	10,139	10,246	10,148	10,025	9,895	9,695	9,620	9,693	9,739
GBY	5,113	5,364	5,348	5,251	5,272	5,051	4,991	4,834	4,935	4,986
LAC	9,256	9,207	9,357	9,562	9,699	9,868	10,019	9,937	9,895	9,801
OSH	10,178	10,585	10,862	10,863	10,846	10,829	10,949	10,654	10,428	10,135
PKS	4,089	4,128	4,060	3,822	3,677	3,695	3,694	3,631	3,621	3,654
PLT	6,523	6,892	7,093	7,367	7,717	7,764	7,878	7,853	7,666	7,447
RVF	5,942	6,057	6,197	6,068	5,744	5,503	5,489	5,263	5,198	5,408
STP	8,316	8,461	8,734	8,741	8,897	8,806	8,536	8,292	7,814	7,399
STO	7,518	7,513	7,762	7,704	7,613	7,591	7,702	7,739	7,740	7,525
SUP	2,191	2,317	2,358	2,321	2,226	2,202	2,116	2,058	2,043	2,103
WTW	9,791	9,995	10,397	10,514	10,807	10,737	10,887	10,927	11,115	10,888
UWC	9,553	10,005	10,406	10,376	9,947	9,718	9,337	8,703	7,619	7,281
<b>UW System</b>	<b>149,494</b>	<b>153,191</b>	<b>156,039</b>	<b>155,162</b>	<b>154,844</b>	<b>153,252</b>	<b>152,773</b>	<b>150,833</b>	<b>148,327</b>	<b>146,909</b>

\*Institutional details may not add to total due to rounding.

**UNDERGRADUATE ENROLLMENT**

Undergraduate headcount enrollment decreased by 1,684, or 1.1 percent, between fall 2016 and fall 2017 (Table 3). Since fall 2010, undergraduate headcount enrollment has decreased by 6,833, or 4.4 percent. The following institutions saw undergraduate enrollment increase from fall 2010: Madison (1,702), Whitewater (984), La Crosse (618), Green Bay (426), Platteville (389) and Oshkosh (182). Conversely, Stout (185), Superior (263), River Falls (695), Eau Claire (696), Parkside (847), Stevens Point (1182), UW Colleges (2,777), and Milwaukee (4,489) all saw fewer enrollments.

**Table 3**  
**The University of Wisconsin System**  
**Historical Profile of Undergraduate Headcount Enrollment, Fall 2008 to Fall 2017**

	2008	2009	2010	2011	2012	2013	2014	2015	2016	2017
MSN	30,362	29,925	30,170	30,014	30,507	30,972	30,990	31,365	31,407	31,872
MIL	24,299	25,204	25,239	24,639	24,175	23,004	23,079	22,284	21,375	20,750
EAU	10,457	10,617	10,800	10,579	10,500	10,388	10,167	9,956	10,043	10,104
GBY	6,088	6,369	6,389	6,445	6,611	6,444	6,668	6,528	6,758	6,815
LAC	8,641	8,871	9,073	9,211	9,515	9,684	9,815	9,702	9,737	9,691
OSH	11,393	11,672	12,230	12,273	12,384	12,623	13,312	12,710	12,479	12,412
PKS	5,045	5,153	5,015	4,766	4,601	4,489	4,448	4,300	4,276	4,168
PLT	6,612	6,971	7,232	7,460	7,840	7,867	8,047	7,983	7,865	7,621
RVF	6,050	6,222	6,373	6,324	6,046	5,787	5,721	5,507	5,482	5,678
STP	8,717	8,804	9,062	9,085	9,296	9,292	8,998	8,857	8,297	7,880
STO	7,769	7,973	8,301	8,353	8,270	8,180	8,254	8,388	8,398	8,116
SUP	2,440	2,576	2,631	2,655	2,550	2,522	2,455	2,362	2,365	2,368
WTW	9,621	9,730	10,144	10,228	10,752	10,852	10,971	11,142	11,380	11,128
UWC	13,275	13,789	14,385	14,570	14,107	14,058	14,172	13,552	12,033	11,608
<b>UW System</b>	<b>150,769</b>	<b>153,876</b>	<b>157,044</b>	<b>156,602</b>	<b>157,154</b>	<b>156,162</b>	<b>157,097</b>	<b>154,636</b>	<b>151,895</b>	<b>150,211</b>

Between fall 2016 and fall 2017, undergraduate FTE enrollment in the UW System decreased by 1,522, or 1.2 percent (Table 4). FTE enrollment has declined by 8,850 enrollments, or 6.4 percent, since fall 2010.

**Table 4**  
**The University of Wisconsin System**  
**Historical Profile of Undergraduate FTE Enrollment, Fall 2008 to Fall 2017**

	2008	2009	2010	2011	2012	2013	2014	2015	2016	2017
MSN	27,373	27,130	27,448	27,208	27,717	28,018	27,860	28,308	28,267	28,791
MIL	20,664	21,536	21,577	21,099	20,634	19,806	19,703	19,132	18,491	18,038
EAU	9,748	9,869	9,980	9,868	9,766	9,652	9,446	9,351	9,386	9,415
GBY	5,022	5,261	5,247	5,150	5,182	4,938	4,869	4,704	4,788	4,779
LAC	8,368	8,492	8,672	8,855	9,084	9,286	9,365	9,298	9,242	9,151
OSH	9,658	10,025	10,338	10,359	10,382	10,310	10,433	10,124	9,814	9,479
PKS	4,021	4,051	3,992	3,761	3,602	3,630	3,628	3,564	3,558	3,582
PLT	6,212	6,582	6,831	7,050	7,394	7,428	7,533	7,491	7,321	7,108
RVF	5,670	5,775	5,902	5,808	5,521	5,292	5,240	5,008	4,947	5,157
STP	8,125	8,262	8,512	8,537	8,697	8,609	8,344	8,109	7,651	7,228
STO	6,965	6,973	7,226	7,204	7,153	7,064	7,159	7,165	7,148	6,912
SUP	2,066	2,197	2,245	2,223	2,141	2,129	2,041	1,987	1,971	1,984
WTW	9,091	9,226	9,575	9,679	10,059	10,075	10,217	10,257	10,423	10,199
UWC	9,553	10,005	10,407	10,376	9,947	9,718	9,337	8,703	7,619	7,281
<b>UW System</b>	<b>132,537</b>	<b>135,384</b>	<b>137,953</b>	<b>137,176</b>	<b>137,278</b>	<b>135,954</b>	<b>135,176</b>	<b>133,202</b>	<b>130,625</b>	<b>129,103</b>

\*Institutional details may not add to total due to rounding.

**GRADUATE AND PROFESSIONAL ENROLLMENT**

Headcount enrollment increased by 375 from fall 2016 to reach 24,305 graduate and professional program enrollments in fall 2017, the highest level recorded since 2011. Graduate headcount enrollment is still 741 enrollments, or 3.0 percent, below the 25,046 enrollments in fall 2010. While total enrollment has declined, enrollment in Doctorate and Professional Practice programs has increased from fall 2010. The UW System’s enrollment of 3,118 Doctorate and Professional Practice students in fall 2017 is an increase of 337 enrollments, or 12.1 percent, compared to fall 2010.

**Table 5  
The University of Wisconsin System  
Historical Profile of Graduate and Professional Headcount Enrollment, Fall 2008 to Fall 2017**

	2008	2009	2010	2011	2012	2013	2014	2015	2016	2017
<b>MSN</b>										
Masters	3,368	3,669	3,737	3,657	3,697	3,799	3,883	3,862	3,850	3,999
Doct-Rsrch/Schlr	5,328	5,552	5,731	5,732	5,688	5,606	5,532	5,354	5,284	5,132
Doct-Prof. Practice	2,562	2,508	2,542	2,662	2,571	2,526	2,460	2,483	2,453	2,447
<b>Total</b>	<b>11,258</b>	<b>11,729</b>	<b>12,010</b>	<b>12,051</b>	<b>11,956</b>	<b>11,931</b>	<b>11,875</b>	<b>11,699</b>	<b>11,587</b>	<b>11,578</b>
<b>MIL</b>										
Masters	3,862	4,020	3,991	3,760	3,586	3,385	3,493	3,419	3,219	3,262
Doct-Rsrch/Schlr	1,023	1,114	1,153	1,229	1,233	1,234	1,250	1,220	1,204	1,163
Doct-Prof. Practice	31	80	87	98	120	161	191	196	213	206
<b>Total</b>	<b>4,916</b>	<b>5,214</b>	<b>5,231</b>	<b>5,087</b>	<b>4,939</b>	<b>4,780</b>	<b>4,934</b>	<b>4,835</b>	<b>4,636</b>	<b>4,631</b>
<b>EAU</b>										
Masters	683	599	599	628	511	464	447	492	584	636
Doct-Prof. Practice			14	27	36	55	78	83	78	85
<b>Total</b>	<b>683</b>	<b>599</b>	<b>613</b>	<b>655</b>	<b>547</b>	<b>519</b>	<b>525</b>	<b>575</b>	<b>662</b>	<b>721</b>
<b>GBY</b>	<b>198</b>	<b>269</b>	<b>247</b>	<b>220</b>	<b>179</b>	<b>223</b>	<b>253</b>	<b>251</b>	<b>272</b>	<b>363</b>
<b>LAC</b>										
Masters	1,115	1,022	939	914	732	686	716	653	757	703
Doct-Prof. Practice	124	116	123	133	133	132	133	131	130	140
<b>Total</b>	<b>1,239</b>	<b>1,138</b>	<b>1,062</b>	<b>1,047</b>	<b>865</b>	<b>818</b>	<b>849</b>	<b>784</b>	<b>887</b>	<b>843</b>
<b>OSH</b>										
Masters	1,360	1,520	1,399	1,240	1,102	1,230	1,158	1,269	1,387	1,394
Doct-Prof. Practice					33	49	72	80	89	129
<b>Total</b>	<b>1,360</b>	<b>1,520</b>	<b>1,399</b>	<b>1,240</b>	<b>1,135</b>	<b>1,279</b>	<b>1,230</b>	<b>1,349</b>	<b>1,476</b>	<b>1,523</b>
<b>PKS</b>	<b>122</b>	<b>150</b>	<b>145</b>	<b>121</b>	<b>168</b>	<b>128</b>	<b>136</b>	<b>143</b>	<b>123</b>	<b>140</b>
<b>PLT</b>	<b>900</b>	<b>832</b>	<b>696</b>	<b>802</b>	<b>838</b>	<b>850</b>	<b>854</b>	<b>967</b>	<b>917</b>	<b>937</b>
<b>RVF</b>	<b>505</b>	<b>506</b>	<b>529</b>	<b>464</b>	<b>401</b>	<b>384</b>	<b>463</b>	<b>451</b>	<b>449</b>	<b>432</b>
<b>STP</b>										
Masters	440	390	423	377	365	332	304	377	310	307
Doct-Prof. Practice	6	15	15	15	16	19	20	21	20	21
<b>Total</b>	<b>446</b>	<b>405</b>	<b>438</b>	<b>392</b>	<b>381</b>	<b>351</b>	<b>324</b>	<b>398</b>	<b>330</b>	<b>328</b>
<b>STO</b>										
Masters	1,070	1,044	1,038	1,003	977	1,095	1,091	1,105	1,181	1,246
Doct-Prof. Practice						11	26	42	40	39
<b>Total</b>	<b>1,070</b>	<b>1,044</b>	<b>1,038</b>	<b>1,003</b>	<b>977</b>	<b>1,106</b>	<b>1,117</b>	<b>1,147</b>	<b>1,221</b>	<b>1,285</b>
<b>SUP</b>	<b>249</b>	<b>218</b>	<b>225</b>	<b>170</b>	<b>150</b>	<b>134</b>	<b>134</b>	<b>127</b>	<b>122</b>	<b>222</b>
<b>WTW</b>										
Masters	1,341	1,409	1,413	1,415	1,279	1,163	1,188	1,172	1,196	1,251
Doct-Prof. Practice								37	52	51
<b>Total</b>	<b>1,341</b>	<b>1,409</b>	<b>1,413</b>	<b>1,415</b>	<b>1,279</b>	<b>1,163</b>	<b>1,188</b>	<b>1,209</b>	<b>1,248</b>	<b>1,302</b>
<b>UW System</b>	<b>24,287</b>	<b>25,033</b>	<b>25,046</b>	<b>24,667</b>	<b>23,815</b>	<b>23,666</b>	<b>23,882</b>	<b>23,935</b>	<b>23,930</b>	<b>24,305</b>

Between fall 2016 and fall 2017, graduate and professional FTE enrollment increased by 104 students, or 0.6 percent to 17,806. Overall, FTE enrollment in graduate and professional programs has fallen by 282 FTE since 2010, or 1.6 percent. The Doctorate and Professional Practice category includes enrollment at UW-Madison (audiology, nursing practice, physical therapy, law, medicine, pharmacy, and veterinary medicine), UW-Milwaukee (nursing practice and physical therapy), UW-Eau Claire (nursing practice), UW-La Crosse (physical therapy), UW-Oshkosh (nursing practice), UW-Stevens Point (audiology), and UW-Stout (career and technical education).

**Table 6**  
**The University of Wisconsin System**  
**Historical Profile of Graduate and Professional FTE Enrollment, Fall 2008 to Fall 2017**

	2008	2009	2010	2011	2012	2013	2014	2015	2016	2017
<b>MSN</b>										
Masters	2,469	2,691	2,748	2,671	2,775	2,871	2,933	2,982	2,998	3,085
Doct-Rsrch/Schlr	4,854	5,247	5,445	5,385	5,343	5,136	5,170	5,079	5,091	4,952
Doct-Prof. Practice	2,568	2,554	2,543	2,650	2,549	2,474	2,411	2,463	2,439	2,391
<b>Total</b>	<b>9,891</b>	<b>10,491</b>	<b>10,737</b>	<b>10,706</b>	<b>10,668</b>	<b>10,481</b>	<b>10,513</b>	<b>10,524</b>	<b>10,528</b>	<b>10,427</b>
<b>MIL</b>										
Masters	2,197	2,375	2,388	2,287	2,194	2,107	2,158	2,173	2,104	2,133
Doct-Rsrch/Schlr	846	913	979	1,033	1,047	1,048	1,099	1,033	1,009	997
Doct-Prof. Practice	39	84	91	93	114	134	148	153	161	157
<b>Total</b>	<b>3,082</b>	<b>3,372</b>	<b>3,458</b>	<b>3,412</b>	<b>3,355</b>	<b>3,290</b>	<b>3,405</b>	<b>3,359</b>	<b>3,273</b>	<b>3,286</b>
<b>EAU</b>										
Masters	268	270	261	268	237	205	195	213	255	270
Doct-Prof. Practice			5	12	23	38	54	55	54	54
<b>Total</b>	<b>268</b>	<b>270</b>	<b>266</b>	<b>280</b>	<b>260</b>	<b>243</b>	<b>249</b>	<b>269</b>	<b>309</b>	<b>324</b>
<b>GBY</b>	<b>90</b>	<b>103</b>	<b>101</b>	<b>101</b>	<b>90</b>	<b>113</b>	<b>122</b>	<b>131</b>	<b>147</b>	<b>207</b>
<b>LAC</b>										
Masters	750	593	549	559	467	436	506	494	506	508
Doct-Prof. Practice	138	121	137	149	147	146	148	145	147	142
<b>Total</b>	<b>888</b>	<b>714</b>	<b>685</b>	<b>707</b>	<b>614</b>	<b>582</b>	<b>654</b>	<b>639</b>	<b>653</b>	<b>650</b>
<b>OSH</b>										
Masters	519	559	524	504	443	484	465	472	553	570
Doct-Prof. Practice					22	36	51	58	62	86
<b>Total</b>	<b>519</b>	<b>559</b>	<b>524</b>	<b>504</b>	<b>465</b>	<b>520</b>	<b>516</b>	<b>529</b>	<b>615</b>	<b>656</b>
<b>PKS</b>	<b>68</b>	<b>76</b>	<b>69</b>	<b>62</b>	<b>75</b>	<b>64</b>	<b>66</b>	<b>66</b>	<b>64</b>	<b>72</b>
<b>PLT</b>	<b>311</b>	<b>310</b>	<b>262</b>	<b>317</b>	<b>323</b>	<b>336</b>	<b>344</b>	<b>362</b>	<b>345</b>	<b>339</b>
<b>RVF</b>	<b>272</b>	<b>282</b>	<b>294</b>	<b>260</b>	<b>224</b>	<b>212</b>	<b>249</b>	<b>254</b>	<b>251</b>	<b>251</b>
<b>STP</b>										
Masters	187	187	210	194	188	183	176	167	148	154
Doct-Prof. Practice	4	12	12	11	13	14	15	16	15	16
<b>Total</b>	<b>191</b>	<b>199</b>	<b>221</b>	<b>204</b>	<b>200</b>	<b>197</b>	<b>191</b>	<b>183</b>	<b>163</b>	<b>171</b>
<b>STO</b>										
Masters	554	539	537	500	461	525	532	554	574	597
Doct-Prof. Practice						2	11	20	17	16
<b>Total</b>	<b>554</b>	<b>539</b>	<b>537</b>	<b>500</b>	<b>461</b>	<b>527</b>	<b>543</b>	<b>574</b>	<b>591</b>	<b>613</b>
<b>SUP</b>	<b>124</b>	<b>121</b>	<b>113</b>	<b>98</b>	<b>84</b>	<b>73</b>	<b>75</b>	<b>71</b>	<b>72</b>	<b>120</b>
<b>WTW</b>										
Masters	700	769	822	835	748	662	669	643	657	656
Doct-Prof. Practice								28	36	32
<b>Total</b>	<b>700</b>	<b>769</b>	<b>822</b>	<b>835</b>	<b>748</b>	<b>662</b>	<b>669</b>	<b>671</b>	<b>693</b>	<b>689</b>
<b>UW System</b>	<b>16,958</b>	<b>17,807</b>	<b>18,088</b>	<b>17,986</b>	<b>17,566</b>	<b>17,299</b>	<b>17,596</b>	<b>17,630</b>	<b>17,702</b>	<b>17,806</b>

\*Institutional details may not add to total due to rounding.

## **RESIDENT STATUS OF UW SYSTEM STUDENTS**

Undergraduate students with Wisconsin resident status made up 77 percent of the undergraduate enrollment in the UW System in fall 2017 (Table 7). Another 14 percent were classified as nonresident students, and the remaining 9 percent attended a UW System institution under the Minnesota or Michigan Reciprocity programs. Since 2008, the percentage of resident students has declined while the percentage of nonresident undergraduates has increased from 9 percent to 14 percent, due in part to tuition programs targeting out-of-state students. These programs include the Tri-State Initiative (1,506 headcount enrollment in fall 2017), the Midwest Student Exchange (4,043), and the Return to Wisconsin (105) programs, plus 238 students enrolled under the Veterans' Choice Act. Growth in these programs accounts for 44.7 percent of the growth in total UW System non-resident enrollment from 2008 to 2017.

In fall 2017, Wisconsin resident undergraduate enrollment ranged from a low of 48 percent at UW-River Falls and UW-Superior to a high of 94 percent at UW Colleges. Nonresident enrollment ranged from 5 percent at UW Colleges and UW-La Crosse to a high of 31 percent at UW-Madison. Minnesota reciprocity students make up a large proportion of the enrollment at UW institutions near the Minnesota border. The highest proportion of reciprocity enrollment is found at UW-River Falls, where Minnesota reciprocity students comprised 47 percent of total undergraduate enrollment. Michigan reciprocity is used by a small group of students attending UW-Marinette.

Graduate and professional headcount enrollment by resident status is shown in Table 8. Wisconsin resident graduate and professional students comprised 54 percent of total graduate and professional student enrollment in UW System institutions in fall 2017. Another 43 percent were classified as nonresident students, and 3 percent were Minnesota reciprocity students. The share of resident graduate and professional enrollment has declined 7 percentage points since fall 2008, while the nonresident graduate and professional enrollment share has since grown by 7 percentage points.

**Table 7**  
**The University of Wisconsin System**  
**Historical Profile of Undergraduate Headcount Enrollment by Resident Status**  
**Fall 2008 to Fall 2017**

		2008	2009	2010	2011	2012	2013	2014	2015	2016	2017
MSN	Resident	65%	65%	65%	65%	64%	63%	63%	62%	62%	61%
	Nonresident	24%	24%	25%	24%	26%	27%	27%	28%	29%	31%
	Reciprocity	10%	11%	11%	11%	11%	10%	10%	10%	9%	9%
MIL	Resident	95%	95%	95%	94%	93%	91%	89%	88%	87%	86%
	Nonresident	3%	4%	4%	5%	6%	7%	9%	10%	11%	12%
	Reciprocity	1%	1%	1%	2%	2%	2%	2%	2%	1%	1%
EAU	Resident	78%	77%	76%	75%	74%	73%	72%	71%	70%	69%
	Nonresident	2%	3%	3%	4%	4%	5%	5%	6%	6%	6%
	Reciprocity	20%	20%	20%	21%	21%	22%	22%	23%	24%	25%
GBY	Resident	94%	94%	93%	93%	93%	93%	93%	92%	92%	92%
	Nonresident	5%	5%	6%	6%	6%	6%	6%	7%	7%	7%
	Reciprocity	1%	1%	1%	1%	1%	1%	1%	1%	1%	1%
LAC	Resident	82%	81%	81%	81%	81%	80%	80%	81%	81%	82%
	Nonresident	6%	7%	7%	7%	6%	6%	6%	6%	5%	5%
	Reciprocity	12%	12%	12%	12%	13%	13%	13%	13%	14%	13%
OSH	Resident	97%	97%	97%	97%	96%	96%	95%	95%	94%	93%
	Nonresident	2%	2%	2%	3%	3%	4%	5%	5%	6%	6%
	Reciprocity	1%	1%	1%	1%	1%	0%	0%	0%	0%	0%
PKS	Resident	91%	91%	89%	88%	88%	86%	84%	83%	82%	81%
	Nonresident	9%	9%	10%	11%	12%	14%	15%	17%	18%	19%
	Reciprocity	0%	0%	0%	0%	0%	0%	0%	0%	0%	0%
PLT	Resident	82%	81%	79%	78%	76%	76%	75%	75%	76%	75%
	Nonresident	16%	18%	20%	20%	22%	22%	23%	24%	23%	23%
	Reciprocity	2%	2%	2%	1%	2%	2%	2%	2%	2%	2%
RVF	Resident	51%	50%	50%	48%	48%	48%	46%	48%	48%	48%
	Nonresident	3%	3%	3%	3%	3%	5%	7%	6%	5%	6%
	Reciprocity	46%	47%	47%	49%	48%	47%	47%	46%	47%	47%
STP	Resident	91%	91%	90%	91%	90%	89%	88%	87%	87%	87%
	Nonresident	5%	5%	6%	6%	7%	8%	8%	9%	9%	10%
	Reciprocity	4%	4%	4%	4%	4%	4%	4%	4%	4%	4%
STO	Resident	68%	69%	69%	69%	67%	67%	66%	65%	66%	66%
	Nonresident	4%	3%	4%	4%	5%	6%	7%	8%	7%	7%
	Reciprocity	28%	28%	27%	27%	28%	27%	27%	27%	27%	26%
SUP	Resident	53%	53%	52%	52%	51%	51%	51%	49%	47%	48%
	Nonresident	8%	10%	11%	10%	11%	11%	11%	14%	14%	15%
	Reciprocity	39%	38%	37%	38%	38%	38%	38%	38%	38%	37%
WTW	Resident	92%	91%	90%	88%	87%	85%	85%	84%	83%	83%
	Nonresident	7%	9%	10%	11%	13%	14%	15%	15%	16%	16%
	Reciprocity	1%	1%	0%	0%	0%	1%	0%	1%	1%	1%
UWC	Resident	97%	97%	97%	97%	96%	96%	95%	95%	94%	94%
	Nonresident	2%	2%	2%	3%	3%	3%	4%	4%	5%	5%
	Reciprocity	1%	1%	1%	1%	1%	1%	1%	1%	1%	1%
<b>UW System</b>	<b>Resident</b>	<b>82%</b>	<b>82%</b>	<b>82%</b>	<b>81%</b>	<b>80%</b>	<b>80%</b>	<b>79%</b>	<b>78%</b>	<b>77%</b>	<b>77%</b>
	<b>Nonresident</b>	<b>9%</b>	<b>9%</b>	<b>9%</b>	<b>10%</b>	<b>11%</b>	<b>12%</b>	<b>12%</b>	<b>13%</b>	<b>14%</b>	<b>14%</b>
	<b>Reciprocity</b>	<b>9%</b>	<b>9%</b>	<b>9%</b>	<b>9%</b>	<b>9%</b>	<b>9%</b>	<b>9%</b>	<b>9%</b>	<b>9%</b>	<b>9%</b>

Reciprocity includes students enrolled in the Minnesota and Michigan reciprocity programs.  
Percentage totals for an institution may not sum to 100% due to rounding.

**Table 8**  
**The University of Wisconsin System**  
**Historical Profile of Graduate and Professional Headcount Enrollment by Resident Status**  
**Fall 2008 to Fall 2017**

		2008	2009	2010	2011	2012	2013	2014	2015	2016	2017
MSN	Resident	44%	43%	43%	43%	41%	39%	39%	38%	38%	38%
	Nonresident	54%	55%	55%	56%	57%	59%	59%	60%	60%	60%
	Reciprocity	2%	2%	2%	2%	2%	2%	2%	2%	2%	2%
MIL	Resident	73%	72%	70%	69%	68%	67%	67%	67%	67%	66%
	Nonresident	25%	26%	27%	29%	30%	31%	32%	31%	32%	33%
	Reciprocity	2%	2%	2%	2%	2%	2%	2%	1%	1%	1%
EAU	Resident	81%	77%	80%	75%	73%	74%	74%	66%	57%	50%
	Nonresident	12%	15%	14%	16%	18%	20%	21%	27%	37%	45%
	Reciprocity	7%	8%	7%	8%	10%	6%	6%	7%	5%	5%
GBY	Resident	97%	96%	96%	96%	93%	91%	85%	89%	74%	65%
	Nonresident	3%	4%	3%	3%	4%	9%	15%	11%	25%	33%
	Reciprocity	0%	0%	0%	1%	3%	1%	1%	0%	1%	2%
LAC	Resident	79%	80%	79%	75%	70%	68%	68%	65%	68%	64%
	Nonresident	12%	10%	11%	14%	16%	18%	19%	21%	22%	25%
	Reciprocity	9%	9%	9%	11%	14%	14%	13%	14%	10%	11%
OSH	Resident	96%	96%	97%	97%	97%	95%	93%	95%	96%	96%
	Nonresident	3%	4%	2%	3%	3%	5%	7%	5%	4%	4%
	Reciprocity	0%	0%	0%	0%	0%	0%	0%	0%	0%	0%
PKS	Resident	70%	80%	83%	85%	86%	77%	77%	75%	67%	74%
	Nonresident	30%	20%	17%	15%	14%	23%	23%	25%	33%	26%
	Reciprocity	0%	0%	0%	0%	0%	0%	0%	0%	0%	0%
PLT	Resident	60%	59%	62%	55%	53%	56%	50%	51%	50%	49%
	Nonresident	40%	41%	38%	45%	47%	44%	50%	49%	50%	51%
	Reciprocity	0%	0%	0%	0%	0%	0%	0%	0%	0%	0%
RVF	Resident	65%	62%	67%	63%	53%	46%	50%	46%	42%	44%
	Nonresident	10%	7%	5%	7%	9%	16%	11%	12%	21%	24%
	Reciprocity	26%	31%	28%	30%	37%	39%	39%	43%	37%	32%
STP	Resident	86%	83%	82%	75%	77%	72%	73%	83%	78%	78%
	Nonresident	12%	15%	15%	21%	19%	22%	21%	12%	17%	17%
	Reciprocity	2%	2%	3%	5%	4%	6%	6%	5%	5%	4%
STO	Resident	67%	66%	65%	62%	59%	60%	60%	59%	58%	60%
	Nonresident	25%	25%	26%	29%	32%	32%	33%	33%	33%	33%
	Reciprocity	9%	9%	8%	9%	9%	8%	8%	8%	8%	7%
SUP	Resident	57%	58%	60%	51%	49%	44%	49%	43%	47%	58%
	Nonresident	2%	3%	4%	4%	4%	7%	5%	9%	9%	9%
	Reciprocity	41%	39%	36%	45%	47%	49%	46%	47%	44%	33%
WTW	Resident	85%	87%	85%	81%	78%	81%	82%	82%	82%	82%
	Nonresident	14%	13%	15%	18%	21%	19%	18%	17%	17%	18%
	Reciprocity	1%	0%	0%	1%	1%	1%	0%	1%	0%	0%
<b>UW System</b>	<b>Resident</b>	<b>61%</b>	<b>61%</b>	<b>60%</b>	<b>58%</b>	<b>56%</b>	<b>55%</b>	<b>54%</b>	<b>54%</b>	<b>54%</b>	<b>54%</b>
	<b>Nonresident</b>	<b>35%</b>	<b>36%</b>	<b>37%</b>	<b>38%</b>	<b>41%</b>	<b>42%</b>	<b>43%</b>	<b>43%</b>	<b>43%</b>	<b>43%</b>
	<b>Reciprocity</b>	<b>3%</b>	<b>3%</b>	<b>3%</b>	<b>3%</b>	<b>4%</b>	<b>3%</b>	<b>3%</b>	<b>3%</b>	<b>3%</b>	<b>3%</b>

Reciprocity includes students enrolled in the Minnesota reciprocity program.  
Percentage totals for an institution may not sum to 100% due to rounding.



**FULL-TIME/PART-TIME STATUS OF UW SYSTEM UNDERGRADUATE STUDENTS**

Full-time students made up 81 percent of the undergraduate enrollment in the UW System in fall 2017 (Table 9). The percentage of part-time undergraduate students ranged between 15 to 19 percent since 2008, generally increasing over this interval. In fall 2017, part-time undergraduate student enrollment ranged from a low of percent at UW-Eau Claire and UW-La Crosse to a high of 53 percent at UW Colleges.

**Table 9**  
**The University of Wisconsin System**  
**Historical Profile of Undergraduate Headcount Enrollment, by Full-Time/Part-Time Status**  
**Fall 2008 to Fall 2017**

		2008	2009	2010	2011	2012	2013	2014	2015	2016	2017
MSN	Full-time	91%	92%	92%	91%	91%	91%	90%	90%	90%	90%
	Part-time	9%	8%	8%	9%	9%	9%	10%	10%	10%	10%
MIL	Full-time	83%	83%	83%	83%	82%	82%	81%	82%	82%	82%
	Part-time	17%	17%	17%	17%	18%	18%	19%	18%	18%	18%
EAU	Full-time	93%	92%	91%	92%	92%	91%	91%	92%	93%	93%
	Part-time	7%	8%	9%	8%	8%	9%	9%	8%	7%	7%
GBY	Full-time	77%	77%	75%	72%	70%	67%	63%	61%	59%	59%
	Part-time	23%	23%	25%	28%	30%	33%	37%	39%	41%	41%
LAC	Full-time	95%	94%	94%	94%	94%	94%	94%	94%	94%	93%
	Part-time	5%	6%	6%	6%	6%	6%	6%	6%	6%	7%
OSH	Full-time	77%	79%	77%	76%	75%	73%	67%	68%	67%	64%
	Part-time	23%	21%	23%	24%	25%	27%	33%	32%	33%	36%
PKS	Full-time	73%	72%	73%	71%	71%	74%	75%	76%	76%	79%
	Part-time	27%	28%	27%	29%	29%	26%	25%	24%	24%	21%
PLT	Full-time	90%	90%	90%	90%	90%	89%	89%	89%	88%	88%
	Part-time	10%	10%	10%	10%	10%	11%	11%	11%	12%	12%
RVF	Full-time	93%	93%	92%	91%	91%	90%	91%	89%	88%	88%
	Part-time	7%	7%	8%	9%	9%	10%	9%	11%	12%	12%
STP	Full-time	93%	94%	94%	93%	93%	93%	92%	92%	92%	91%
	Part-time	7%	6%	6%	7%	7%	7%	8%	8%	8%	9%
STO	Full-time	88%	85%	84%	83%	83%	83%	83%	82%	81%	81%
	Part-time	12%	15%	16%	17%	17%	17%	17%	18%	19%	19%
SUP	Full-time	80%	81%	81%	79%	79%	80%	78%	79%	76%	77%
	Part-time	20%	19%	19%	21%	21%	20%	22%	21%	24%	23%
WTW	Full-time	93%	94%	93%	93%	92%	91%	91%	89%	89%	88%
	Part-time	7%	6%	7%	7%	8%	9%	9%	11%	11%	12%
UWC	Full-time	63%	64%	63%	61%	59%	57%	52%	49%	48%	47%
	Part-time	37%	36%	37%	39%	41%	43%	48%	51%	52%	53%
<b>UW System</b>	<b>Full-time</b>	<b>85%</b>	<b>85%</b>	<b>85%</b>	<b>84%</b>	<b>84%</b>	<b>83%</b>	<b>82%</b>	<b>82%</b>	<b>82%</b>	<b>81%</b>
	<b>Part-time</b>	<b>15%</b>	<b>15%</b>	<b>15%</b>	<b>16%</b>	<b>16%</b>	<b>17%</b>	<b>18%</b>	<b>18%</b>	<b>18%</b>	<b>19%</b>

**FULL-TIME/PART-TIME STATUS OF UW SYSTEM GRADUATE AND PROFESSIONAL STUDENTS**

Part-time students made up 42 percent of the graduate and professional enrollment in the UW System in fall 2017 (Table 10). In fall 2017, part-time graduate and professional student enrollment ranged from a low of 18 percent at UW-Madison to a high of 94 percent at UW-Platteville.

**Table 10**  
**The University of Wisconsin System**  
**Historical Profile of Graduate and Professional Headcount Enrollment, by Full-Time/Part-Time Status**  
**Fall 2008 to Fall 2017**

		2008	2009	2010	2011	2012	2013	2014	2015	2016	2017
MSN	Full-time	83%	82%	82%	82%	82%	82%	83%	83%	83%	82%
	Part-time	17%	18%	18%	18%	18%	18%	17%	17%	17%	18%
MIL	Full-time	47%	49%	51%	53%	54%	55%	53%	55%	57%	57%
	Part-time	53%	51%	49%	47%	46%	45%	47%	45%	43%	43%
EAU	Full-time	17%	19%	19%	18%	21%	21%	22%	17%	16%	13%
	Part-time	83%	81%	81%	82%	79%	79%	78%	83%	84%	87%
GBY	Full-time	21%	17%	19%	25%	30%	26%	23%	23%	27%	29%
	Part-time	79%	83%	81%	75%	70%	74%	77%	77%	73%	71%
LAC	Full-time	36%	29%	33%	39%	44%	48%	53%	56%	48%	51%
	Part-time	64%	71%	67%	61%	56%	52%	47%	44%	52%	49%
OSH	Full-time	12%	13%	10%	13%	14%	14%	15%	15%	14%	17%
	Part-time	88%	87%	90%	87%	86%	86%	85%	85%	86%	83%
PKS	Full-time	25%	29%	21%	24%	20%	26%	22%	20%	26%	25%
	Part-time	75%	71%	79%	76%	80%	74%	78%	80%	74%	75%
PLT	Full-time	10%	9%	9%	16%	13%	12%	12%	9%	7%	6%
	Part-time	90%	91%	91%	84%	87%	88%	88%	91%	93%	94%
RVF	Full-time	24%	29%	27%	30%	35%	33%	31%	32%	34%	38%
	Part-time	76%	71%	73%	70%	65%	67%	69%	68%	66%	63%
STP	Full-time	25%	27%	33%	30%	38%	34%	35%	26%	34%	35%
	Part-time	75%	73%	67%	70%	62%	66%	65%	74%	66%	65%
STO	Full-time	29%	29%	26%	25%	24%	24%	23%	25%	23%	21%
	Part-time	71%	71%	74%	75%	76%	76%	77%	75%	77%	79%
SUP	Full-time	31%	35%	32%	41%	39%	38%	41%	42%	43%	32%
	Part-time	69%	65%	68%	59%	61%	62%	59%	58%	57%	68%
WTW	Full-time	27%	29%	35%	39%	39%	36%	33%	33%	35%	30%
	Part-time	73%	71%	65%	61%	61%	64%	67%	67%	65%	70%
<b>UW System</b>	<b>Full-time</b>	<b>56%</b>	<b>56%</b>	<b>58%</b>	<b>59%</b>	<b>61%</b>	<b>60%</b>	<b>60%</b>	<b>60%</b>	<b>60%</b>	<b>58%</b>
	<b>Part-time</b>	<b>44%</b>	<b>44%</b>	<b>42%</b>	<b>41%</b>	<b>39%</b>	<b>40%</b>	<b>40%</b>	<b>40%</b>	<b>40%</b>	<b>42%</b>

# Appendices

Fall 2017

Detailed breakdown of enrollment for the UW System and individual UW institutions.

**The University of Wisconsin System  
Fall 2017**

	Fresh.	Soph.	Junior	Senior	UG Spec.	UG Total	GR Spec.	Masters	Doctorate-Rsrch/ Schlrshp	Doctorate-Prof. Practice	Male	Female	Total
<b>Total Headcount</b>	34,876	31,625	29,746	41,646	12,318	150,211	1,292	13,600	6,295	3,118	80,939	93,577	174,516
<b>Full-Time Equiv. (FTE)</b>	32,389	28,969	27,646	35,990	4,109	129,103	377	8,586	5,949	2,894	68,805	78,104	146,909
<b>Entrance Status</b>													
New	26,668	2,208	95	24	8,825	37,820	436	4,415	817	719	19,334	24,873	44,207
Continuing	5,858	25,139	26,159	39,822	2,982	99,960	754	9,050	5,395	2,377	55,439	62,097	117,536
Re-entry	541	575	405	747	511	2,779	102	135	83	22	1,520	1,601	3,121
Transfer	1,809	3,703	3,087	1,053	0	9,652	0	0	0	0	4,646	5,006	9,652
<b>Resident Status</b>													
Resident	27,067	23,921	21,888	31,548	10,871	115,295	983	8,502	1,278	2,280	58,536	69,802	128,338
Non-Resident	4,667	4,763	4,817	6,064	1,338	21,649	298	4,545	4,969	736	16,394	15,803	32,197
Reciprocity	3,142	2,941	3,041	4,034	109	13,267	11	553	48	102	6,009	7,972	13,981
<b>Race/Ethnicity</b>													
African American	1,265	949	861	1,184	212	4,471	41	472	179	107	2,391	2,879	5,270
Hispanic/Latino	2,529	1,929	1,637	2,029	551	8,675	49	586	340	116	4,465	5,301	9,766
American Indian	130	94	108	152	40	524	5	64	21	14	266	362	628
SE Asian American	749	680	586	838	102	2,955	10	139	39	38	1,424	1,757	3,181
Other Asian American	581	607	666	919	332	3,105	14	342	209	201	1,843	2,028	3,871
Hawaiian/Pacific Islander	25	19	29	40	5	118	5	13	5	0	75	66	141
Two or More Races	1,206	1,060	1,028	1,090	288	4,672	18	251	142	57	2,293	2,847	5,140
International	917	1,177	1,222	1,434	805	5,555	27	1,443	2,160	49	5,260	3,974	9,234
White/Unknown	27,474	25,110	23,609	33,960	9,983	120,136	1,123	10,290	3,200	2,536	62,922	74,363	137,285
<b>Full-Time/Part-Time Status</b>													
Part-Time	2,899	3,555	2,856	7,710	11,168	28,188	1,247	7,416	986	472	16,666	21,643	38,309
Full-Time	31,977	28,070	26,890	33,936	1,150	122,023	45	6,184	5,309	2,646	64,273	71,934	136,207
<b>Age Range</b>													
19 and Under	30,530	16,794	2,594	185	6,975	57,078	0	1	0	0	24,741	32,338	57,079
20-24	3,291	12,669	24,060	32,621	1,655	74,296	72	3,906	1,105	1,326	38,792	41,913	80,705
25-29	496	1,067	1,483	4,317	925	8,288	200	4,323	2,694	1,204	8,436	8,273	16,709
30 and Over	559	1,095	1,609	4,523	2,760	10,546	1,019	5,370	2,496	588	8,969	11,050	20,019
Unknown	0	0	0	0	3	3	1	0	0	0	1	3	4
<b>Gender</b>													
Male	16,477	15,065	14,164	19,730	4,856	70,292	333	5,733	3,381	1,200	80,939	0	80,939
Female	18,399	16,560	15,582	21,916	7,462	79,919	959	7,867	2,914	1,918	0	93,577	93,577
<b>Headcount History</b>													
2016	35,483	32,199	29,895	42,448	11,870	151,895	1,442	12,925	6,488	3,075	81,658	94,167	175,825
2015	36,813	32,541	30,267	43,071	11,944	154,636	1,725	12,563	6,574	3,073	83,363	95,208	178,571
2014	37,842	32,813	30,557	43,511	12,374	157,097	1,587	12,533	6,782	2,980	84,369	96,610	180,979
2013	38,784	33,157	30,751	43,429	10,041	156,162	1,630	12,243	6,840	2,953	83,993	95,835	179,828
2012	39,823	33,635	30,665	43,653	9,378	157,154	1,764	12,221	6,921	2,909	84,347	96,622	180,969

**The University of Wisconsin System  
UW-Madison Fall 2017**

	Fresh.	Soph.	Junior	Senior	UG Spec.	UG Total	GR Spec.	Masters	Doctorate-Rsrch/ Schlrshp	Doctorate-Prof. Practice	Male	Female	Total
<b>Total Headcount</b>	5,021	6,464	7,566	10,583	2,238	31,872	0	3,999	5,132	2,447	21,310	22,140	43,450
<b>Full-Time Equiv. (FTE)</b>	4,794	6,261	7,272	9,592	873	28,791	0	3,085	4,952	2,391	19,179	20,040	39,219
<b>Entrance Status</b>													
New	4,927	1,627	54	1	1,003	7,612	0	1,697	674	606	5,010	5,579	10,589
Continuing	77	4,246	6,929	10,353	1,054	22,659	0	2,270	4,412	1,823	15,452	15,712	31,164
Re-entry	9	22	48	92	181	352	0	32	46	18	233	215	448
Transfer	8	569	535	137	0	1,249	0	0	0	0	615	634	1,249
<b>Resident Status</b>													
Resident	2,916	3,647	4,539	6,681	1,566	19,349	0	1,872	823	1,714	11,383	12,375	23,758
Non-Resident	1,801	2,192	2,356	2,778	655	9,782	0	2,019	4,277	670	8,553	8,195	16,748
Reciprocity	304	625	671	1,124	17	2,741	0	108	32	63	1,374	1,570	2,944
<b>Race/Ethnicity</b>													
African American	122	137	154	209	56	678	0	86	129	76	423	546	969
Hispanic/Latino	341	317	349	522	60	1,589	0	176	298	96	1,000	1,159	2,159
American Indian	18	10	16	15	1	60	0	12	19	9	36	64	100
SE Asian American	85	110	105	148	14	462	0	31	35	30	220	338	558
Other Asian American	212	296	341	487	109	1,445	0	126	172	189	964	968	1,932
Hawaiian/Pacific Islander	4	5	14	8	0	31	0	5	4	0	20	20	40
Two or More Races	146	249	261	314	26	996	0	83	126	47	546	706	1,252
International	420	681	762	854	451	3,168	0	894	1,751	45	3,290	2,568	5,858
White/Unknown	3,673	4,659	5,564	8,026	1,521	23,443	0	2,586	2,598	1,955	14,811	15,771	30,582
<b>Full-Time/Part-Time Status</b>													
Part-Time	17	62	194	1,094	1,809	3,176	0	1,301	611	117	2,644	2,561	5,205
Full-Time	5,004	6,402	7,372	9,489	429	28,696	0	2,698	4,521	2,330	18,666	19,579	38,245
<b>Age Range</b>													
19 and Under	4,956	5,438	1,851	145	149	12,539	0	0	0	0	5,761	6,778	12,539
20-24	59	1,003	5,579	9,873	613	17,127	0	1,605	1,032	1,149	10,426	10,487	20,913
25-29	4	15	79	325	330	753	0	1,390	2,297	1,009	2,808	2,641	5,449
30 and Over	2	8	57	240	1,146	1,453	0	1,004	1,803	289	2,315	2,234	4,549
<b>Gender</b>													
Male	2,251	3,101	3,754	5,375	1,109	15,590	0	1,871	2,818	1,031	21,310	0	21,310
Female	2,770	3,363	3,812	5,208	1,129	16,282	0	2,128	2,314	1,416	0	22,140	22,140
<b>Headcount History</b>													
2016	4,860	6,270	7,654	10,469	2,154	31,407	0	3,850	5,284	2,453	21,181	21,813	42,994
2015	4,683	6,536	7,706	10,359	2,081	31,365	0	3,862	5,354	2,483	21,316	21,748	43,064
2014	4,946	6,242	7,492	10,328	1,982	30,990	0	3,883	5,532	2,460	21,180	21,685	42,865
2013	5,208	6,260	7,475	10,225	1,804	30,972	0	3,799	5,606	2,526	21,110	21,793	42,903
2012	5,232	6,104	7,507	9,955	1,709	30,507	0	3,697	5,688	2,571	20,764	21,699	42,463

**The University of Wisconsin System  
UW-Milwaukee Fall 2017**

	Fresh.	Soph.	Junior	Senior	UG Spec.	UG Total	GR Spec.	Masters	Doctorate-Rsrch/ Schlrshp	Doctorate-Prof. Practice	Male	Female	Total
<b>Total Headcount</b>	4,068	4,542	4,440	6,364	1,336	20,750	282	2,980	1,163	206	11,724	13,657	25,381
<b>Full-Time Equiv. (FTE)</b>	3,893	4,152	4,033	5,416	543	18,038	104	2,029	997	157	9,907	11,417	21,324
<b>Entrance Status</b>													
New	3,145	82	4	2	332	3,565	128	1,004	143	15	2,105	2,750	4,855
Continuing	615	3,692	3,873	6,033	849	15,062	138	1,919	983	189	8,557	9,734	18,291
Re-entry	66	116	80	157	155	574	16	57	37	2	296	390	686
Transfer	242	652	483	172	0	1,549	0	0	0	0	766	783	1,549
<b>Resident Status</b>													
Resident	3,454	3,832	3,809	5,581	1,210	17,886	230	2,189	455	193	9,583	11,370	20,953
Non-Resident	546	648	569	692	121	2,576	52	757	692	13	1,997	2,093	4,090
Reciprocity	68	62	62	91	5	288	0	34	16	0	144	194	338
<b>Race/Ethnicity</b>													
African American	321	360	334	470	67	1,552	19	163	50	11	651	1,144	1,795
Hispanic/Latino	559	562	461	570	104	2,256	21	181	42	15	1,145	1,370	2,515
American Indian	15	13	17	30	3	78	0	11	2	1	43	49	92
SE Asian American	150	192	170	240	14	766	4	38	4	4	397	419	816
Other Asian American	120	142	130	171	51	614	7	85	37	4	371	376	747
Hawaiian/Pacific Islander	2	4	4	7	0	17	2	0	1	0	11	9	20
Two or More Races	219	192	180	237	35	863	11	75	16	3	405	563	968
International	100	191	183	223	63	760	16	277	409	1	901	562	1,463
White/Unknown	2,582	2,886	2,961	4,416	999	13,844	202	2,150	602	167	7,800	9,165	16,965
<b>Full-Time/Part-Time Status</b>													
Part-Time	191	492	544	1,379	1,089	3,695	256	1,262	375	89	2,523	3,154	5,677
Full-Time	3,877	4,050	3,896	4,985	247	17,055	26	1,718	788	117	9,201	10,503	19,704
<b>Age Range</b>													
19 and Under	3,541	1,875	102	1	185	5,704	0	1	0	0	2,455	3,250	5,705
20-24	420	2,243	3,540	3,992	267	10,462	27	888	73	43	5,421	6,072	11,493
25-29	55	249	443	1,330	193	2,270	74	1,078	397	82	1,917	1,984	3,901
30 and Over	52	175	355	1,041	691	2,314	181	1,013	693	81	1,931	2,351	4,282
<b>Gender</b>													
Male	1,890	2,158	2,143	3,168	509	9,868	117	1,132	563	44	11,724	0	11,724
Female	2,178	2,384	2,297	3,196	827	10,882	165	1,848	600	162	0	13,657	13,657
<b>Headcount History</b>													
2016	4,104	4,832	4,375	6,689	1,375	21,375	322	2,897	1,204	213	12,156	13,855	26,011
2015	4,514	4,887	4,444	7,043	1,396	22,284	370	3,049	1,220	196	12,751	14,368	27,119
2014	4,824	4,843	4,751	7,134	1,527	23,079	415	3,078	1,250	191	13,240	14,773	28,013
2013	4,731	5,030	4,840	7,130	1,273	23,004	411	2,974	1,234	161	13,246	14,538	27,784
2012	5,048	5,352	4,929	7,356	1,490	24,175	416	3,170	1,233	120	13,801	15,313	29,114

**The University of Wisconsin System  
UW-Eau Claire Fall 2017**

	Fresh.	Soph.	Junior	Senior	UG Spec.	UG Total	GR Spec.	Masters	Doctorate-Rsrch/ Schlrshp	Doctorate-Prof. Practice	Male	Female	Total
<b>Total Headcount</b>	2,685	2,410	2,143	2,742	124	10,104	66	570	0	85	4,216	6,609	10,825
<b>Full-Time Equiv. (FTE)</b>	2,591	2,307	2,038	2,428	51	9,415	14	256	0	54	3,761	5,978	9,739
<b>Entrance Status</b>													
New	2,233	111	8	0	96	2,448	32	129	0	23	967	1,665	2,632
Continuing	331	2,028	2,003	2,661	28	7,051	34	441	0	62	2,967	4,621	7,588
Re-entry	8	25	15	35	0	83	0	0	0	0	54	29	83
Transfer	113	246	117	46	0	522	0	0	0	0	228	294	522
<b>Resident Status</b>													
Resident	1,810	1,658	1,472	1,927	82	6,949	29	258	0	72	2,859	4,449	7,308
Non-Resident	130	110	116	183	42	581	37	286	0	0	422	482	904
Reciprocity	745	642	555	632	0	2,574	0	26	0	13	935	1,678	2,613
<b>Race/Ethnicity</b>													
African American	31	28	15	29	0	103	1	11	0	5	64	56	120
Hispanic/Latino	99	76	46	69	7	297	2	16	0	0	136	179	315
American Indian	3	5	8	9	0	25	0	1	0	0	15	11	26
SE Asian American	45	63	49	65	2	224	0	3	0	0	72	155	227
Other Asian American	35	20	19	34	2	110	1	20	0	1	43	89	132
Hawaiian/Pacific Islander	0	1	2	1	0	4	0	0	0	0	2	2	4
Two or More Races	96	59	31	52	6	244	1	6	0	1	103	149	252
International	34	38	56	60	28	216	0	10	0	0	112	114	226
White/Unknown	2,342	2,120	1,917	2,423	79	8,881	61	503	0	78	3,669	5,854	9,523
<b>Full-Time/Part-Time Status</b>													
Part-Time	27	87	112	397	95	718	66	490	0	68	567	775	1,342
Full-Time	2,658	2,323	2,031	2,345	29	9,386	0	80	0	17	3,649	5,834	9,483
<b>Age Range</b>													
19 and Under	2,549	1,444	118	10	35	4,156	0	0	0	0	1,453	2,703	4,156
20-24	126	926	1,951	2,346	40	5,389	5	96	0	4	2,252	3,242	5,494
25-29	4	22	38	186	11	261	5	169	0	25	234	226	460
30 and Over	6	18	36	200	38	298	56	305	0	56	277	438	715
<b>Gender</b>													
Male	1,043	913	835	1,071	48	3,910	24	277	0	5	4,216	0	4,216
Female	1,642	1,497	1,308	1,671	76	6,194	42	293	0	80	0	6,609	6,609
<b>Headcount History</b>													
2016	2,709	2,306	2,016	2,827	185	10,043	69	515	0	78	4,111	6,594	10,705
2015	2,644	2,098	2,006	3,007	201	9,956	69	423	0	83	4,134	6,397	10,531
2014	2,523	2,141	2,166	3,090	247	10,167	63	384	0	78	4,314	6,378	10,692
2013	2,504	2,251	2,178	3,211	244	10,388	74	390	0	55	4,459	6,448	10,907
2012	2,574	2,220	2,290	3,200	216	10,500	77	434	0	36	4,581	6,466	11,047

**The University of Wisconsin System  
UW-Green Bay Fall 2017**

	Fresh.	Soph.	Junior	Senior	UG Spec.	UG Total	GR Spec.	Masters	Doctorate-Rsrch/ Schlrshp	Doctorate-Prof. Practice	Male	Female	Total
<b>Total Headcount</b>	1,109	993	1,273	2,117	1,323	6,815	18	345	0	0	2,489	4,689	7,178
<b>Full-Time Equiv. (FTE)</b>	1,013	885	1,045	1,530	305	4,779	4	203	0	0	1,751	3,235	4,986
<b>Entrance Status</b>													
New	929	44	2	0	1,233	2,208	6	96	0	0	802	1,508	2,310
Continuing	112	742	976	1,931	35	3,796	6	239	0	0	1,406	2,635	4,041
Re-entry	6	16	27	42	55	146	6	10	0	0	54	108	162
Transfer	62	191	268	144	0	665	0	0	0	0	227	438	665
<b>Resident Status</b>													
Resident	1,001	913	1,153	1,934	1,269	6,270	16	219	0	0	2,201	4,304	6,505
Non-Resident	91	60	108	156	53	468	1	119	0	0	246	342	588
Reciprocity	17	20	12	27	1	77	1	7	0	0	42	43	85
<b>Race/Ethnicity</b>													
African American	36	11	17	34	8	106	0	10	0	0	58	58	116
Hispanic/Latino	70	52	68	88	67	345	0	12	0	0	125	232	357
American Indian	5	17	19	31	12	84	1	9	0	0	31	63	94
SE Asian American	28	20	26	56	11	141	0	1	0	0	65	77	142
Other Asian American	10	7	15	22	15	69	0	7	0	0	32	44	76
Hawaiian/Pacific Islander	0	0	1	2	0	3	0	0	0	0	0	3	3
Two or More Races	45	41	35	41	30	192	0	4	0	0	68	128	196
International	12	19	15	11	26	83	0	14	0	0	51	46	97
White/Unknown	903	826	1,077	1,832	1,154	5,792	17	288	0	0	2,059	4,038	6,097
<b>Full-Time/Part-Time Status</b>													
Part-Time	111	145	343	907	1,289	2,795	17	242	0	0	1,013	2,041	3,054
Full-Time	998	848	930	1,210	34	4,020	1	103	0	0	1,476	2,648	4,124
<b>Age Range</b>													
19 and Under	993	529	56	1	1,221	2,800	0	0	0	0	922	1,878	2,800
20-24	74	356	836	1,119	53	2,438	4	87	0	0	902	1,627	2,529
25-29	19	34	141	344	18	556	2	77	0	0	260	375	635
30 and Over	23	74	240	653	31	1,021	12	181	0	0	405	809	1,214
<b>Gender</b>													
Male	377	356	456	690	470	2,349	4	136	0	0	2,489	0	2,489
Female	732	637	817	1,427	853	4,466	14	209	0	0	0	4,689	4,689
<b>Headcount History</b>													
2016	950	1,036	1,345	2,171	1,256	6,758	22	250	0	0	2,350	4,680	7,030
2015	869	1,049	1,314	2,255	1,041	6,528	33	218	0	0	2,247	4,532	6,779
2014	879	1,074	1,421	2,287	1,007	6,668	51	202	0	0	2,387	4,534	6,921
2013	959	1,159	1,376	2,257	693	6,444	39	184	0	0	2,310	4,357	6,667
2012	1,098	1,200	1,445	2,330	538	6,611	53	126	0	0	2,381	4,409	6,790



**The University of Wisconsin System  
UW-La Crosse Fall 2017**

	Fresh.	Soph.	Junior	Senior	UG Spec.	UG Total	GR Spec.	Masters	Doctorate-Rsrch/ Schlrshp	Doctorate-Prof. Practice	Male	Female	Total
<b>Total Headcount</b>	2,450	2,211	2,120	2,615	295	9,691	60	643	0	140	4,539	5,995	10,534
<b>Full-Time Equiv. (FTE)</b>	2,397	2,176	2,058	2,403	117	9,151	17	491	0	142	4,174	5,627	9,801
<b>Entrance Status</b>													
New	2,026	89	4	0	229	2,348	23	175	0	0	1,024	1,522	2,546
Continuing	304	1,856	1,971	2,547	47	6,725	13	463	0	140	3,185	4,156	7,341
Re-entry	10	19	22	38	19	108	24	5	0	0	67	70	137
Transfer	110	247	123	30	0	510	0	0	0	0	263	247	510
<b>Resident Status</b>													
Resident	2,061	1,801	1,721	2,088	242	7,913	57	367	0	112	3,695	4,754	8,449
Non-Resident	103	112	109	125	46	495	3	200	0	11	317	392	709
Reciprocity	286	298	290	402	7	1,283	0	76	0	17	527	849	1,376
<b>Race/Ethnicity</b>													
African American	16	25	17	14	1	73	0	4	0	1	51	27	78
Hispanic/Latino	92	80	69	78	6	325	0	11	0	1	151	186	337
American Indian	6	2	3	5	0	16	0	3	0	1	12	8	20
SE Asian American	42	18	27	31	0	118	2	9	0	0	70	59	129
Other Asian American	25	18	24	22	6	95	1	12	0	0	40	68	108
Hawaiian/Pacific Islander	0	0	2	1	0	3	0	0	0	0	2	1	3
Two or More Races	76	72	57	50	8	263	1	11	0	5	139	141	280
International	12	19	25	23	38	117	1	35	0	0	88	65	153
White/Unknown	2,181	1,977	1,896	2,391	236	8,681	55	558	0	132	3,986	5,440	9,426
<b>Full-Time/Part-Time Status</b>													
Part-Time	27	51	84	223	253	638	59	302	0	54	467	586	1,053
Full-Time	2,423	2,160	2,036	2,392	42	9,053	1	341	0	86	4,072	5,409	9,481
<b>Age Range</b>													
19 and Under	2,328	1,339	116	8	182	3,973	0	0	0	0	1,591	2,382	3,973
20-24	112	823	1,922	2,433	58	5,348	4	292	0	103	2,562	3,185	5,747
25-29	5	31	54	110	18	218	8	182	0	25	212	221	433
30 and Over	5	18	28	64	37	152	48	169	0	12	174	207	381
<b>Gender</b>													
Male	1,072	1,002	918	1,120	124	4,236	7	248	0	48	4,539	0	4,539
Female	1,378	1,209	1,202	1,495	171	5,455	53	395	0	92	0	5,995	5,995
<b>Headcount History</b>													
2016	2,449	2,284	2,075	2,666	263	9,737	101	656	0	130	4,550	6,074	10,624
2015	2,511	2,122	2,082	2,722	265	9,702	47	606	0	131	4,497	5,989	10,486
2014	2,435	2,181	2,150	2,698	351	9,815	109	607	0	133	4,562	6,102	10,664
2013	2,510	2,181	2,158	2,451	384	9,684	134	552	0	132	4,498	6,004	10,502
2012	2,436	2,210	1,930	2,551	388	9,515	159	573	0	133	4,288	6,092	10,380

**The University of Wisconsin System  
UW-Oshkosh Fall 2017**

	Fresh.	Soph.	Junior	Senior	UG Spec.	UG Total	GR Spec.	Masters	Doctorate-Rsrch/ Schlrshp	Doctorate-Prof. Practice	Male	Female	Total
<b>Total Headcount</b>	2,089	1,760	2,068	3,233	3,262	12,412	273	1,121	0	129	5,320	8,615	13,935
<b>Full-Time Equiv. (FTE)</b>	2,085	1,700	1,897	2,746	1,051	9,479	61	509	0	86	3,994	6,142	10,135
<b>Entrance Status</b>													
New	1,481	37	1	0	3,250	4,769	30	348	0	44	1,771	3,420	5,191
Continuing	414	1,436	1,748	3,010	12	6,620	197	767	0	83	3,089	4,578	7,667
Re-entry	17	24	41	94	0	176	46	6	0	2	99	131	230
Transfer	177	263	278	129	0	847	0	0	0	0	361	486	847
<b>Resident Status</b>													
Resident	1,874	1,567	1,904	2,996	3,225	11,566	262	1,074	0	123	4,928	8,097	13,025
Non-Resident	204	183	154	218	37	796	11	44	0	3	371	483	854
Reciprocity	11	10	10	19	0	50	0	3	0	3	21	35	56
<b>Race/Ethnicity</b>													
African American	81	58	53	39	17	248	1	15	0	2	113	153	266
Hispanic/Latino	132	104	89	110	147	582	3	37	0	3	228	397	625
American Indian	4	4	5	21	6	40	2	13	0	1	23	33	56
SE Asian American	84	50	69	94	38	335	3	19	0	4	132	229	361
Other Asian American	13	11	12	27	61	124	1	13	0	2	44	96	140
Hawaiian/Pacific Islander	1	2	1	0	2	6	0	2	0	0	4	4	8
Two or More Races	58	58	57	64	94	331	0	5	0	0	143	193	336
International	11	12	15	20	25	83	0	15	0	0	55	43	98
White/Unknown	1,705	1,461	1,767	2,858	2,872	10,663	263	1,002	0	117	4,578	7,467	12,045
<b>Full-Time/Part-Time Status</b>													
Part-Time	131	129	305	707	3,186	4,458	273	917	0	79	2,043	3,684	5,727
Full-Time	1,958	1,631	1,763	2,526	76	7,954	0	204	0	50	3,277	4,931	8,208
<b>Age Range</b>													
19 and Under	1,839	799	45	3	3,207	5,893	0	0	0	0	2,035	3,858	5,893
20-24	162	869	1,723	2,300	23	5,077	6	138	0	17	2,175	3,063	5,238
25-29	32	43	131	441	9	656	30	343	0	49	472	606	1,078
30 and Over	56	49	169	489	23	786	237	640	0	63	638	1,088	1,726
<b>Gender</b>													
Male	844	712	876	1,348	1,092	4,872	43	386	0	19	5,320	0	5,320
Female	1,245	1,048	1,192	1,885	2,170	7,540	230	735	0	110	0	8,615	8,615
<b>Headcount History</b>													
2016	2,124	1,892	2,114	3,399	2,950	12,479	334	1,053	0	89	5,388	8,567	13,955
2015	2,314	2,004	2,366	3,257	2,769	12,710	421	848	0	80	5,579	8,480	14,059
2014	2,491	2,144	2,263	3,419	2,995	13,312	270	888	0	72	5,626	8,916	14,542
2013	2,661	2,028	2,334	3,596	2,004	12,623	334	896	0	49	5,495	8,407	13,902
2012	2,729	2,163	2,325	3,556	1,611	12,384	246	856	0	33	5,494	8,025	13,519

**The University of Wisconsin System  
UW-Parkside Fall 2017**

	Fresh.	Soph.	Junior	Senior	UG Spec.	UG Total	GR Spec.	Masters	Doctorate-Rsrch/ Schlrshp	Doctorate-Prof. Practice	Male	Female	Total
<b>Total Headcount</b>	972	812	882	1,406	96	4,168	0	140	0	0	2,052	2,256	4,308
<b>Full-Time Equiv. (FTE)</b>	926	730	754	1,145	28	3,582	0	72	0	0	1,743	1,911	3,654
<b>Entrance Status</b>													
New	684	8	0	20	63	775	0	43	0	0	392	426	818
Continuing	209	668	722	1,287	20	2,906	0	95	0	0	1,423	1,578	3,001
Re-entry	28	15	7	49	13	112	0	2	0	0	55	59	114
Transfer	51	121	153	50	0	375	0	0	0	0	182	193	375
<b>Resident Status</b>													
Resident	824	684	706	1,073	90	3,377	0	103	0	0	1,649	1,831	3,480
Non-Resident	144	126	174	331	6	781	0	37	0	0	396	422	818
Reciprocity	4	2	2	2	0	10	0	0	0	0	7	3	10
<b>Race/Ethnicity</b>													
African American	107	69	59	139	1	375	0	8	0	0	149	234	383
Hispanic/Latino	178	140	150	181	12	661	0	5	0	0	314	352	666
American Indian	2	0	3	1	0	6	0	1	0	0	4	3	7
SE Asian American	2	8	7	7	0	24	0	2	0	0	9	17	26
Other Asian American	25	24	33	41	3	126	0	3	0	0	68	61	129
Hawaiian/Pacific Islander	0	0	0	4	0	4	0	0	0	0	4	0	4
Two or More Races	50	32	37	58	7	184	0	3	0	0	91	96	187
International	24	14	13	17	3	71	0	24	0	0	51	44	95
White/Unknown	584	525	580	958	70	2,717	0	94	0	0	1,362	1,449	2,811
<b>Full-Time/Part-Time Status</b>													
Part-Time	78	123	198	400	94	893	0	105	0	0	454	544	998
Full-Time	894	689	684	1,006	2	3,275	0	35	0	0	1,598	1,712	3,310
<b>Age Range</b>													
19 and Under	821	344	16	0	51	1,232	0	0	0	0	549	683	1,232
20-24	124	393	684	855	14	2,070	0	28	0	0	1,009	1,089	2,098
25-29	15	31	91	254	8	399	0	32	0	0	229	202	431
30 and Over	12	44	91	297	23	467	0	80	0	0	265	282	547
<b>Gender</b>													
Male	455	373	422	679	50	1,979	0	73	0	0	2,052	0	2,052
Female	517	439	460	727	46	2,189	0	67	0	0	0	2,256	2,256
<b>Headcount History</b>													
2016	935	814	980	1,425	122	4,276	0	123	0	0	2,087	2,312	4,399
2015	914	875	988	1,391	132	4,300	24	119	0	0	2,108	2,335	4,443
2014	990	1,014	981	1,296	167	4,448	13	123	0	0	2,199	2,385	4,584
2013	1,211	1,013	857	1,283	125	4,489	1	127	0	0	2,240	2,377	4,617
2012	1,175	954	865	1,323	284	4,601	46	122	0	0	2,283	2,486	4,769

\*Excludes Students Studying Away

**The University of Wisconsin System  
UW-Platteville Fall 2017**

	Fresh.	Soph.	Junior	Senior	UG Spec.	UG Total	GR Spec.	Masters	Doctorate-Rsrch/ Schlrshp	Doctorate-Prof. Practice	Male	Female	Total
<b>Total Headcount</b>	1,920	1,628	1,642	2,297	134	7,621	93	844	0	0	5,525	3,033	8,558
<b>Full-Time Equiv. (FTE)</b>	1,906	1,590	1,554	2,018	40	7,108	22	317	0	0	4,830	2,618	7,447
<b>Entrance Status</b>													
New	1,394	27	5	0	59	1,485	26	113	0	0	1,043	581	1,624
Continuing	422	1,400	1,456	2,219	74	5,571	66	729	0	0	4,111	2,255	6,366
Re-entry	16	22	16	33	1	88	1	2	0	0	68	23	91
Transfer	88	179	165	45	0	477	0	0	0	0	303	174	477
<b>Resident Status</b>													
Resident	1,476	1,268	1,195	1,701	109	5,749	63	397	0	0	4,032	2,177	6,209
Non-Resident	424	334	414	556	24	1,752	29	447	0	0	1,414	814	2,228
Reciprocity	20	26	33	40	1	120	1	0	0	0	79	42	121
<b>Race/Ethnicity</b>													
African American	48	14	16	26	10	114	1	72	0	0	105	82	187
Hispanic/Latino	95	63	68	75	9	310	6	47	0	0	228	135	363
American Indian	2	0	4	5	0	11	0	1	0	0	2	10	12
SE Asian American	10	11	13	12	0	46	0	4	0	0	38	12	50
Other Asian American	12	10	15	18	1	56	1	26	0	0	48	35	83
Hawaiian/Pacific Islander	3	1	0	3	0	7	1	0	0	0	4	4	8
Two or More Races	38	34	27	36	3	138	1	17	0	0	83	73	156
International	30	16	26	22	9	103	3	46	0	0	89	63	152
White/Unknown	1,682	1,479	1,473	2,100	102	6,836	80	631	0	0	4,928	2,619	7,547
<b>Full-Time/Part-Time Status</b>													
Part-Time	52	103	192	434	125	906	88	791	0	0	1,075	710	1,785
Full-Time	1,868	1,525	1,450	1,863	9	6,715	5	53	0	0	4,450	2,323	6,773
<b>Age Range</b>													
19 and Under	1,725	736	54	4	19	2,538	0	0	0	0	1,646	892	2,538
20-24	156	807	1,455	1,897	34	4,349	6	61	0	0	2,910	1,506	4,416
25-29	11	40	50	189	18	308	19	208	0	0	353	182	535
30 and Over	28	45	83	207	63	426	68	575	0	0	616	453	1,069
<b>Gender</b>													
Male	1,282	1,077	1,070	1,533	53	5,015	43	467	0	0	5,525	0	5,525
Female	638	551	572	764	81	2,606	50	377	0	0	0	3,033	3,033
<b>Headcount History</b>													
2016	2,131	1,638	1,621	2,341	134	7,865	79	838	0	0	5,694	3,088	8,782
2015	2,245	1,610	1,673	2,240	215	7,983	124	843	0	0	5,739	3,211	8,950
2014	2,385	1,666	1,601	2,221	174	8,047	93	761	0	0	5,696	3,205	8,901
2013	2,335	1,626	1,676	2,091	139	7,867	108	742	0	0	5,587	3,130	8,717
2012	2,441	1,636	1,573	2,066	124	7,840	152	686	0	0	5,524	3,154	8,678

**The University of Wisconsin System  
UW-River Falls Fall 2017**

	Fresh.	Soph.	Junior	Senior	UG Spec.	UG Total	GR Spec.	Masters	Doctorate-Rsrch/ Schlrshp	Doctorate-Prof. Practice	Male	Female	Total
<b>Total Headcount</b>	1,690	1,228	1,191	1,392	177	5,678	11	421	0	0	2,353	3,757	6,110
<b>Full-Time Equiv. (FTE)</b>	1,554	1,178	1,115	1,216	93	5,157	3	248	0	0	2,062	3,346	5,408
<b>Entrance Status</b>													
New	1,278	43	4	0	120	1,445	6	110	0	0	547	1,014	1,561
Continuing	264	991	1,004	1,343	47	3,649	5	307	0	0	1,533	2,428	3,961
Re-entry	37	28	46	33	10	154	0	4	0	0	72	86	158
Transfer	111	166	137	16	0	430	0	0	0	0	201	229	430
<b>Resident Status</b>													
Resident	839	610	515	646	100	2,710	7	184	0	0	1,062	1,839	2,901
Non-Resident	86	47	60	84	47	324	0	103	0	0	180	247	427
Reciprocity	765	571	616	662	30	2,644	4	134	0	0	1,111	1,671	2,782
<b>Race/Ethnicity</b>													
African American	42	14	27	22	0	105	0	14	0	0	69	50	119
Hispanic/Latino	63	41	56	35	4	199	0	11	0	0	93	117	210
American Indian	3	1	4	2	0	10	0	1	0	0	7	4	11
SE Asian American	31	22	24	21	0	98	0	3	0	0	45	56	101
Other Asian American	19	6	16	9	3	53	0	8	0	0	29	32	61
Hawaiian/Pacific Islander	2	1	0	2	0	5	0	1	0	0	2	4	6
Two or More Races	41	30	31	32	3	137	1	10	0	0	59	89	148
International	16	17	11	28	36	108	0	30	0	0	66	72	138
White/Unknown	1,473	1,096	1,022	1,241	131	4,963	10	343	0	0	1,983	3,333	5,316
<b>Full-Time/Part-Time Status</b>													
Part-Time	173	64	108	235	110	690	11	259	0	0	380	580	960
Full-Time	1,517	1,164	1,083	1,157	67	4,988	0	162	0	0	1,973	3,177	5,150
<b>Age Range</b>													
19 and Under	1,503	606	60	3	68	2,240	0	0	0	0	771	1,469	2,240
20-24	157	566	995	1,132	35	2,885	3	117	0	0	1,198	1,807	3,005
25-29	13	29	76	146	30	294	1	137	0	0	219	213	432
30 and Over	17	27	60	111	44	259	7	167	0	0	165	268	433
<b>Gender</b>													
Male	663	471	496	522	63	2,215	2	136	0	0	2,353	0	2,353
Female	1,027	757	695	870	114	3,463	9	285	0	0	0	3,757	3,757
<b>Headcount History</b>													
2016	1,578	1,139	1,142	1,471	152	5,482	14	435	0	0	2,266	3,665	5,931
2015	1,437	1,091	1,219	1,531	229	5,507	20	431	0	0	2,298	3,660	5,958
2014	1,410	1,165	1,225	1,551	370	5,721	39	424	0	0	2,393	3,791	6,184
2013	1,443	1,225	1,197	1,627	295	5,787	11	373	0	0	2,411	3,760	6,171
2012	1,585	1,203	1,292	1,779	187	6,046	32	369	0	0	2,510	3,937	6,447

**The University of Wisconsin System  
UW-Stevens Point Fall 2017**

	Fresh.	Soph.	Junior	Senior	UG Spec.	UG Total	GR Spec.	Masters	Doctorate-Rsrch/ Schlrshp	Doctorate-Prof. Practice	Male	Female	Total
<b>Total Headcount</b>	2,154	1,585	1,613	2,389	139	7,880	65	242	0	21	3,779	4,429	8,208
<b>Full-Time Equiv. (FTE)</b>	2,031	1,507	1,522	2,127	42	7,228	13	141	0	16	3,448	3,951	7,399
<b>Entrance Status</b>													
New	1,534	23	3	0	0	1,560	0	98	0	5	759	904	1,663
Continuing	431	1,320	1,427	2,279	139	5,596	65	144	0	16	2,707	3,114	5,821
Re-entry	39	25	22	51	0	137	0	0	0	0	66	71	137
Transfer	150	217	161	59	0	587	0	0	0	0	247	340	587
<b>Resident Status</b>													
Resident	1,822	1,392	1,399	2,091	133	6,837	61	185	0	11	3,185	3,909	7,094
Non-Resident	265	142	152	186	6	751	2	51	0	4	439	369	808
Reciprocity	67	51	62	112	0	292	2	6	0	6	155	151	306
<b>Race/Ethnicity</b>													
African American	65	49	26	36	2	178	1	3	0	0	110	72	182
Hispanic/Latino	96	65	59	61	3	284	0	2	0	1	126	161	287
American Indian	12	5	4	8	2	31	0	1	0	0	16	16	32
SE Asian American	39	27	33	67	1	167	0	2	0	0	73	96	169
Other Asian American	18	8	19	28	5	78	0	3	0	0	35	46	81
Hawaiian/Pacific Islander	2	0	3	2	0	7	0	0	0	0	3	4	7
Two or More Races	69	41	36	38	1	185	0	3	0	0	86	102	188
International	49	24	19	29	2	123	0	3	0	0	65	61	126
White/Unknown	1,804	1,366	1,414	2,120	123	6,827	64	225	0	20	3,265	3,871	7,136
<b>Full-Time/Part-Time Status</b>													
Part-Time	75	80	101	296	131	683	64	143	0	6	340	556	896
Full-Time	2,079	1,505	1,512	2,093	8	7,197	1	99	0	15	3,439	3,873	7,312
<b>Age Range</b>													
19 and Under	1,858	699	50	4	40	2,651	0	0	0	0	1,174	1,477	2,651
20-24	257	802	1,418	1,943	42	4,462	5	83	0	10	2,162	2,398	4,560
25-29	20	45	77	241	14	397	13	51	0	11	242	230	472
30 and Over	19	39	68	201	43	370	46	108	0	0	201	323	524
Unknown	0	0	0	0	0	0	1	0	0	0	0	1	1
<b>Gender</b>													
Male	1,068	711	764	1,102	48	3,693	15	70	0	1	3,779	0	3,779
Female	1,086	874	849	1,287	91	4,187	50	172	0	20	0	4,429	4,429
<b>Headcount History</b>													
2016	2,307	1,641	1,743	2,479	127	8,297	94	216	0	20	4,008	4,619	8,627
2015	2,451	1,704	1,785	2,756	161	8,857	189	188	0	21	4,322	4,933	9,255
2014	2,296	1,769	1,923	2,867	143	8,998	102	202	0	20	4,350	4,972	9,322
2013	2,314	1,785	1,996	3,018	179	9,292	104	228	0	19	4,542	5,101	9,643
2012	2,286	1,908	2,014	2,910	178	9,296	139	226	0	16	4,545	5,132	9,677

**The University of Wisconsin System  
UW-Stout Fall 2017**

	Fresh.	Soph.	Junior	Senior	UG Spec.	UG Total	GR Spec.	Masters	Doctorate-Rsrch/ Schlrshp	Doctorate-Prof. Practice	Male	Female	Total
<b>Total Headcount</b>	2,061	1,524	1,707	2,643	181	8,116	324	922	0	39	5,000	4,401	9,401
<b>Full-Time Equiv. (FTE)</b>	1,934	1,402	1,477	2,019	80	6,912	106	491	0	16	4,062	3,462	7,525
<b>Entrance Status</b>													
New	1,489	38	1	0	81	1,609	155	301	0	13	1,081	997	2,078
Continuing	427	1,262	1,439	2,446	94	5,668	169	621	0	26	3,444	3,040	6,484
Re-entry	19	23	27	51	6	126	0	0	0	0	75	51	126
Transfer	126	201	240	146	0	713	0	0	0	0	400	313	713
<b>Resident Status</b>													
Resident	1,301	966	1,119	1,863	120	5,369	162	581	0	27	3,312	2,827	6,139
Non-Resident	125	112	108	206	54	605	160	258	0	12	525	510	1,035
Reciprocity	635	446	480	574	7	2,142	2	83	0	0	1,163	1,064	2,227
<b>Race/Ethnicity</b>													
African American	52	29	31	35	1	148	18	30	0	3	123	76	199
Hispanic/Latino	80	27	47	63	1	218	13	28	0	0	130	129	259
American Indian	6	5	4	9	2	26	1	4	0	1	17	15	32
SE Asian American	57	42	45	69	1	214	1	17	0	0	127	105	232
Other Asian American	17	9	17	17	2	62	3	21	0	0	34	52	86
Hawaiian/Pacific Islander	3	1	1	7	0	12	2	1	0	0	8	7	15
Two or More Races	63	35	48	39	1	186	1	11	0	1	111	88	199
International	22	27	29	73	43	194	6	50	0	0	162	88	250
White/Unknown	1,761	1,349	1,485	2,331	130	7,056	279	760	0	34	4,288	3,841	8,129
<b>Full-Time/Part-Time Status</b>													
Part-Time	85	108	293	904	141	1,531	316	664	0	39	1,262	1,288	2,550
Full-Time	1,976	1,416	1,414	1,739	40	6,585	8	258	0	0	3,738	3,113	6,851
<b>Age Range</b>													
19 and Under	1,814	609	34	2	21	2,480	0	0	0	0	1,368	1,112	2,480
20-24	206	835	1,402	1,797	55	4,295	11	167	0	0	2,454	2,019	4,473
25-29	19	32	99	342	36	528	34	269	0	2	438	395	833
30 and Over	22	48	172	502	69	813	279	486	0	37	740	875	1,615
<b>Gender</b>													
Male	1,226	856	957	1,451	76	4,566	58	354	0	22	5,000	0	5,000
Female	835	668	750	1,192	105	3,550	266	568	0	17	0	4,401	4,401
<b>Headcount History</b>													
2016	2,172	1,568	1,760	2,678	220	8,398	325	856	0	40	5,020	4,599	9,619
2015	2,160	1,659	1,713	2,662	194	8,388	335	770	0	42	4,957	4,578	9,535
2014	2,137	1,512	1,658	2,755	192	8,254	346	745	0	26	4,768	4,603	9,371
2013	2,116	1,505	1,750	2,684	125	8,180	330	765	0	11	4,687	4,599	9,286
2012	2,127	1,480	1,662	2,798	203	8,270	333	644	0	0	4,592	4,655	9,247

**The University of Wisconsin System  
UW-Superior Fall 2017**

	Fresh.	Soph.	Junior	Senior	UG Spec.	UG Total	GR Spec.	Masters	Doctorate-Rsrch/ Schlrshp	Doctorate-Prof. Practice	Male	Female	Total
<b>Total Headcount</b>	459	390	502	883	134	2,368	2	220	0	0	973	1,617	2,590
<b>Full-Time Equiv. (FTE)</b>	444	356	442	703	39	1,984	1	119	0	0	822	1,282	2,103
<b>Entrance Status</b>													
New	323	14	8	0	112	457	0	79	0	0	214	322	536
Continuing	86	309	353	801	20	1,569	1	138	0	0	620	1,088	1,708
Re-entry	5	13	17	38	2	75	1	3	0	0	30	49	79
Transfer	45	54	124	44	0	267	0	0	0	0	109	158	267
<b>Resident Status</b>													
Resident	217	165	188	453	113	1,136	1	127	0	0	420	844	1,264
Non-Resident	85	80	78	96	13	352	0	20	0	0	195	177	372
Reciprocity	157	145	236	334	8	880	1	73	0	0	358	596	954
<b>Race/Ethnicity</b>													
African American	5	4	13	13	3	38	0	6	0	0	24	20	44
Hispanic/Latino	17	10	12	22	1	62	0	6	0	0	31	37	68
American Indian	9	6	12	12	1	40	0	2	0	0	12	30	42
SE Asian American	2	1	1	4	1	9	0	0	0	0	3	6	9
Other Asian American	1	2	3	12	3	21	0	0	0	0	7	14	21
Hawaiian/Pacific Islander	0	0	0	1	0	1	0	1	0	0	0	2	2
Two or More Races	18	13	17	29	2	79	0	4	0	0	32	51	83
International	64	52	44	50	9	219	0	2	0	0	123	98	221
White/Unknown	343	302	400	740	114	1,899	2	199	0	0	741	1,359	2,100
<b>Full-Time/Part-Time Status</b>													
Part-Time	22	44	91	260	123	540	2	150	0	0	212	480	692
Full-Time	437	346	411	623	11	1,828	0	70	0	0	761	1,137	1,898
<b>Age Range</b>													
19 and Under	364	175	34	3	93	669	0	0	0	0	273	396	669
20-24	70	152	326	459	18	1,025	0	30	0	0	428	627	1,055
25-29	11	25	56	157	5	254	0	49	0	0	108	195	303
30 and Over	14	38	86	264	17	419	2	141	0	0	164	398	562
Unknown	0	0	0	0	1	1	0	0	0	0	0	1	1
<b>Gender</b>													
Male	214	179	182	285	46	906	1	66	0	0	973	0	973
Female	245	211	320	598	88	1,462	1	154	0	0	0	1,617	1,617
<b>Headcount History</b>													
2016	501	373	486	897	108	2,365	4	118	0	0	950	1,537	2,487
2015	465	414	485	890	108	2,362	6	121	0	0	957	1,532	2,489
2014	453	438	530	918	116	2,455	5	129	0	0	1,010	1,579	2,589
2013	492	448	541	924	117	2,522	2	132	0	0	1,049	1,607	2,656
2012	543	435	541	941	90	2,550	10	140	0	0	1,124	1,576	2,700



**The University of Wisconsin System  
UW-Whitewater Fall 2017**

	Fresh.	Soph.	Junior	Senior	UG Spec.	UG Total	GR Spec.	Masters	Doctorate-Rsrch/ Schlrshp	Doctorate-Prof. Practice	Male	Female	Total
<b>Total Headcount</b>	2,196	2,909	2,506	2,911	606	11,128	98	1,153	0	51	6,204	6,226	12,430
<b>Full-Time Equiv. (FTE)</b>	2,154	2,812	2,410	2,625	198	10,199	31	625	0	32	5,495	5,393	10,888
<b>Entrance Status</b>													
New	1,972	40	1	1	469	2,483	30	222	0	13	1,342	1,406	2,748
Continuing	124	2,474	2,182	2,846	85	7,711	60	917	0	38	4,356	4,370	8,726
Re-entry	9	36	26	32	52	155	8	14	0	0	98	79	177
Transfer	91	359	297	32	0	779	0	0	0	0	408	371	779
<b>Resident Status</b>													
Resident	1,809	2,386	2,075	2,443	557	9,270	95	946	0	28	5,176	5,163	10,339
Non-Resident	369	508	419	453	48	1,797	3	204	0	23	993	1,034	2,027
Reciprocity	18	15	12	15	1	61	0	3	0	0	35	29	64
<b>Race/Ethnicity</b>													
African American	119	98	97	116	11	441	0	50	0	9	269	231	500
Hispanic/Latino	159	184	159	155	27	684	4	54	0	0	351	391	742
American Indian	8	2	5	3	2	20	1	5	0	1	11	16	27
SE Asian American	20	31	17	23	1	92	0	10	0	0	47	55	102
Other Asian American	25	26	20	31	5	107	0	18	0	5	65	65	130
Hawaiian/Pacific Islander	2	0	1	2	0	5	0	3	0	0	7	1	8
Two or More Races	85	121	209	98	12	525	2	19	0	0	273	273	546
International	12	22	24	24	41	123	1	43	0	3	90	80	170
White/Unknown	1,766	2,425	1,974	2,459	507	9,131	90	951	0	33	5,091	5,114	10,205
<b>Full-Time/Part-Time Status</b>													
Part-Time	38	154	203	406	521	1,322	95	790	0	20	1,011	1,216	2,227
Full-Time	2,158	2,755	2,303	2,505	85	9,806	3	363	0	31	5,193	5,010	10,203
<b>Age Range</b>													
19 and Under	2,070	1,561	58	1	386	4,076	0	0	0	0	2,025	2,051	4,076
20-24	92	1,205	2,188	2,460	84	6,029	1	314	0	0	3,214	3,130	6,344
25-29	15	74	125	237	47	498	14	338	0	1	451	400	851
30 and Over	19	69	135	213	87	523	83	501	0	50	513	644	1,157
Unknown	0	0	0	0	2	2	0	0	0	0	1	1	2
<b>Gender</b>													
Male	1,167	1,604	1,265	1,360	242	5,638	19	517	0	30	6,204	0	6,204
Female	1,029	1,305	1,241	1,551	364	5,490	79	636	0	21	0	6,226	6,226
<b>Headcount History</b>													
2016	2,409	3,027	2,472	2,867	605	11,380	78	1,118	0	52	6,327	6,301	12,628
2015	2,379	2,941	2,360	2,904	558	11,142	87	1,085	0	37	6,136	6,215	12,351
2014	2,355	2,888	2,322	2,932	474	10,971	81	1,107	0	0	6,017	6,142	12,159
2013	2,357	2,798	2,328	2,930	439	10,852	82	1,081	0	0	5,874	6,141	12,015
2012	2,413	2,837	2,292	2,888	322	10,752	101	1,178	0	0	5,927	6,104	12,031

**The University of Wisconsin System  
UW Colleges Fall 2017**

	Fresh.	Soph.	Junior	Senior	UG Spec.	UG Total	GR Spec.	Masters	Doctorate-Rsrch/ Schlrshp	Doctorate-Prof. Practice	Male	Female	Total
<b>Total Headcount</b>	6,002	3,169	93	71	2,273	11,608	0	0	0	0	5,455	6,153	11,608
<b>Full-Time Equiv. (FTE)</b>	4,667	1,914	30	21	648	7,281	0	0	0	0	3,579	3,701	7,281
<b>Entrance Status</b>													
New	3,253	25	0	0	1,778	5,056	0	0	0	0	2,277	2,779	5,056
Continuing	2,042	2,715	76	66	478	5,377	0	0	0	0	2,589	2,788	5,377
Re-entry	272	191	11	2	17	493	0	0	0	0	253	240	493
Transfer	435	238	6	3	0	682	0	0	0	0	336	346	682
<b>Resident Status</b>													
Resident	5,663	3,032	93	71	2,055	10,914	0	0	0	0	5,051	5,863	10,914
Non-Resident	294	109	0	0	186	589	0	0	0	0	346	243	589
Reciprocity	45	28	0	0	32	105	0	0	0	0	58	47	105
<b>Race/Ethnicity</b>													
African American	220	53	2	2	35	312	0	0	0	0	182	130	312
Hispanic/Latino	548	208	4	0	103	863	0	0	0	0	407	456	863
American Indian	37	24	4	1	11	77	0	0	0	0	37	40	77
SE Asian American	154	85	0	1	19	259	0	0	0	0	126	133	259
Other Asian American	49	28	2	0	66	145	0	0	0	0	63	82	145
Hawaiian/Pacific Islander	6	4	0	0	3	13	0	0	0	0	8	5	13
Two or More Races	202	83	2	2	60	349	0	0	0	0	154	195	349
International	111	45	0	0	31	187	0	0	0	0	117	70	187
White/Unknown	4,675	2,639	79	65	1,945	9,403	0	0	0	0	4,361	5,042	9,403
<b>Full-Time/Part-Time Status</b>													
Part-Time	1,872	1,913	88	68	2,202	6,143	0	0	0	0	2,675	3,468	6,143
Full-Time	4,130	1,256	5	3	71	5,465	0	0	0	0	2,780	2,685	5,465
<b>Age Range</b>													
19 and Under	4,169	640	0	0	1,318	6,127	0	0	0	0	2,718	3,409	6,127
20-24	1,276	1,689	41	15	319	3,340	0	0	0	0	1,679	1,661	3,340
25-29	273	397	23	15	188	896	0	0	0	0	493	403	896
30 and Over	284	443	29	41	448	1,245	0	0	0	0	565	680	1,245
<b>Gender</b>													
Male	2,925	1,552	26	26	926	5,455	0	0	0	0	5,455	0	5,455
Female	3,077	1,617	67	45	1,347	6,153	0	0	0	0	0	6,153	6,153
<b>Headcount History</b>													
2016	6,254	3,379	112	69	2,219	12,033	0	0	0	0	5,570	6,463	12,033
2015	7,227	3,551	126	54	2,594	13,552	0	0	0	0	6,322	7,230	13,552
2014	7,718	3,736	74	15	2,629	14,172	0	0	0	0	6,627	7,545	14,172
2013	7,943	3,848	45	2	2,220	14,058	0	0	0	0	6,485	7,573	14,058
2012	8,136	3,933	0	0	2,038	14,107	0	0	0	0	6,533	7,574	14,107