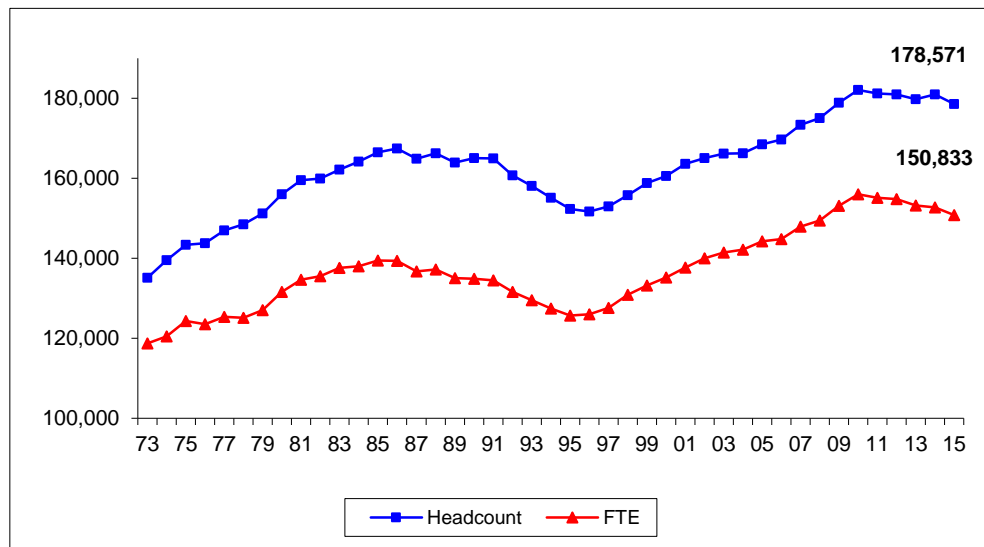




Informational Memorandum

Trends in Enrollment: Fall 2015 Update

UW System Headcount and FTE Enrollments Fall 1973 to Fall 2015



- Fall 2015 headcount enrollment 178,571**
 Down 2,408 (1.3%) from fall 2014.
 Details shown in Table 1.
- Fall 2015 full-time equivalent (FTE) enrollment 150,833**
 Down 1,940 (1.3%) from fall 2014.
 Details shown in Table 2.
- Appendices provide a detailed breakdown of student enrollment characteristics by UW institution.

OVERALL ENROLLMENT

Fall 2015 headcount enrollment decreased by 2,408, or 1.3 percent, from fall 2014 (Table 1). In fall 2015, the UW System headcount enrollment was 178,571. Since 2006, enrollment in the UW System is up by 12,475, or 7.4 percent. The greatest growth since fall 2006 has been at UW-Platteville (31.4%) and UW-Green Bay (19.1%).

Table 1
The University of Wisconsin System
Historical Profile of Headcount Enrollment, Fall 2006 to Fall 2015

	2006	2007	2008	2009	2010	2011	2012	2013	2014	2015
MSN	41,028	41,563	41,620	41,654	42,180	42,065	42,463	42,903	42,865	43,064
MIL	28,309	29,338	29,215	30,418	30,470	29,726	29,114	27,784	28,013	27,119
EAU	10,766	10,854	11,140	11,216	11,413	11,234	11,047	10,907	10,692	10,531
GBY	5,690	6,110	6,286	6,638	6,636	6,665	6,790	6,667	6,921	6,779
LAC	9,849	9,994	9,880	10,009	10,135	10,258	10,380	10,502	10,664	10,486
OSH	12,530	12,772	12,753	13,192	13,629	13,513	13,519	13,902	14,542	14,059
PKS	5,007	5,010	5,167	5,303	5,160	4,887	4,769	4,617	4,584	4,443
PLT	6,813	7,189	7,512	7,803	7,928	8,262	8,678	8,717	8,901	8,950
RVF	6,229	6,452	6,555	6,728	6,902	6,788	6,447	6,171	6,184	5,958
STP	9,048	9,115	9,163	9,209	9,500	9,477	9,677	9,643	9,322	9,255
STO	8,372	8,477	8,839	9,017	9,339	9,356	9,247	9,286	9,371	9,535
SUP	2,924	2,753	2,689	2,794	2,856	2,825	2,700	2,656	2,589	2,489
WTW	10,502	10,737	10,962	11,139	11,557	11,643	12,031	12,015	12,159	12,351
UWC	12,639	13,029	13,275	13,789	14,385	14,570	14,107	14,058	14,172	13,552
UW System	169,706	173,393	175,056	178,909	182,090	181,269	180,969	179,828	180,979	178,571

Fall 2015 full-time equivalent (FTE) enrollment decreased by 1,940, or 1.3 percent, from fall 2014 (Table 2). FTE enrollment has dropped in five straight years after continually increasing between 2006 and 2010. In fall 2015, the UW System enrolled 150,833 FTE students. Since 2006, FTE in the UW System is up by 6,017 FTE, or 4.2 percent. The highest percentage growth since fall 2006 has been at UW-Platteville (30.6%) and UW-Whitewater (18.5%).

Table 2
The University of Wisconsin System
Historical Profile of FTE Enrollment, Fall 2006 to Fall 2015

	2006	2007	2008	2009	2010	2011	2012	2013	2014	2015
MSN	36,726	37,137	37,263	37,622	38,185	37,914	38,385	38,498	38,373	38,832
MIL	22,747	23,780	23,746	24,908	25,035	24,511	23,989	23,095	23,108	22,491
EAU	9,727	9,738	10,016	10,139	10,246	10,148	10,025	9,895	9,695	9,620
GBY	4,719	5,021	5,113	5,364	5,348	5,251	5,272	5,051	4,991	4,834
LAC	9,027	9,243	9,256	9,207	9,357	9,562	9,699	9,868	10,019	9,937
OSH	10,108	10,173	10,178	10,585	10,862	10,863	10,846	10,829	10,949	10,654
PKS	3,934	3,985	4,089	4,128	4,060	3,822	3,677	3,695	3,694	3,631
PLT	6,012	6,270	6,523	6,892	7,093	7,367	7,717	7,764	7,878	7,853
RVF	5,612	5,841	5,942	6,057	6,197	6,068	5,744	5,503	5,489	5,263
STP	8,165	8,268	8,316	8,461	8,734	8,741	8,897	8,806	8,536	8,292
STO	7,322	7,320	7,518	7,513	7,762	7,704	7,613	7,591	7,702	7,739
SUP	2,343	2,246	2,191	2,317	2,358	2,321	2,226	2,202	2,116	2,058
WTW	9,221	9,484	9,791	9,995	10,397	10,514	10,807	10,737	10,887	10,927
UWC	9,153	9,450	9,553	10,005	10,406	10,376	9,947	9,718	9,337	8,703
UW System	144,816	147,954	149,494	153,191	156,039	155,162	154,844	153,252	152,773	150,833

*Institutional details may not add to total due to rounding.

UNDERGRADUATE ENROLLMENT

Undergraduate headcount enrollment decreased by 2,461, or 1.6 percent, between fall 2014 and fall 2015 (Table 3). Since 2006, undergraduate headcount enrollment has increased by 9,978, or 6.2 percent.

Table 3
The University of Wisconsin System
Historical Profile of Undergraduate Headcount Enrollment, Fall 2006 to Fall 2015

	2006	2007	2008	2009	2010	2011	2012	2013	2014	2015
MSN	29,639	30,166	30,362	29,925	30,170	30,014	30,507	30,972	30,990	31,365
MIL	23,595	24,395	24,299	25,204	25,239	24,639	24,175	23,004	23,079	22,284
EAU	10,152	10,189	10,457	10,617	10,800	10,579	10,500	10,388	10,167	9,956
GBY	5,534	5,911	6,088	6,369	6,389	6,445	6,611	6,444	6,668	6,528
LAC	8,341	8,547	8,641	8,871	9,073	9,211	9,515	9,684	9,815	9,702
OSH	11,002	11,146	11,393	11,672	12,230	12,273	12,384	12,623	13,312	12,710
PKS	4,873	4,890	5,045	5,153	5,015	4,766	4,601	4,489	4,448	4,300
PLT	6,133	6,414	6,612	6,971	7,232	7,460	7,840	7,867	8,047	7,983
RVF	5,753	6,007	6,050	6,222	6,373	6,324	6,046	5,787	5,721	5,507
STP	8,644	8,694	8,717	8,804	9,062	9,085	9,296	9,292	8,998	8,857
STO	7,517	7,551	7,769	7,973	8,301	8,353	8,270	8,180	8,254	8,388
SUP	2,626	2,497	2,440	2,576	2,631	2,655	2,550	2,522	2,455	2,362
WTW	9,210	9,408	9,621	9,730	10,144	10,228	10,752	10,852	10,971	11,142
UWC	12,639	13,029	13,275	13,789	14,385	14,570	14,107	14,058	14,172	13,552
UW System	145,658	148,844	150,769	153,876	157,044	156,602	157,154	156,162	157,097	154,636

Between fall 2014 and fall 2015, undergraduate FTE enrollment in the UW System decreased by 1,974, or 1.5 percent (Table 4). FTE enrollment has grown by 5,255, or 4.1 percent, since 2006.

Table 4
The University of Wisconsin System
Historical Profile of Undergraduate FTE Enrollment, Fall 2006 to Fall 2015

	2006	2007	2008	2009	2010	2011	2012	2013	2014	2015
MSN	26,701	27,110	27,373	27,130	27,448	27,208	27,717	28,018	27,860	28,308
MIL	19,855	20,720	20,664	21,536	21,577	21,099	20,634	19,806	19,703	19,132
EAU	9,470	9,484	9,748	9,869	9,980	9,868	9,766	9,652	9,446	9,351
GBY	4,652	4,933	5,022	5,261	5,247	5,150	5,182	4,938	4,869	4,704
LAC	8,029	8,267	8,368	8,492	8,672	8,855	9,084	9,286	9,365	9,298
OSH	9,524	9,557	9,658	10,025	10,338	10,359	10,382	10,310	10,433	10,124
PKS	3,879	3,930	4,021	4,051	3,992	3,761	3,602	3,630	3,628	3,564
PLT	5,734	5,996	6,212	6,582	6,831	7,050	7,394	7,428	7,533	7,491
RVF	5,387	5,602	5,670	5,775	5,902	5,808	5,521	5,292	5,240	5,008
STP	7,969	8,068	8,125	8,262	8,512	8,537	8,697	8,609	8,344	8,109
STO	6,841	6,821	6,965	6,973	7,226	7,204	7,153	7,064	7,159	7,165
SUP	2,203	2,125	2,066	2,197	2,245	2,223	2,141	2,129	2,041	1,987
WTW	8,551	8,793	9,091	9,226	9,575	9,679	10,059	10,075	10,217	10,257
UWC	9,153	9,450	9,553	10,005	10,407	10,376	9,947	9,718	9,337	8,703
UW System	127,947	130,856	132,537	135,384	137,953	137,176	137,278	135,954	135,176	133,202

*Institutional details may not add to total due to rounding.

GRADUATE AND PROFESSIONAL ENROLLMENT

The fall 2015 headcount enrollment of 23,935 in graduate and professional programs is an increase of 53 students from fall 2014, or 0.2 percent. Graduate headcount enrollment has declined by 113 since fall 2006, a 0.5 percent decrease. Sectors showing the highest percentage headcount growth since 2006 include the Doctorate-Research/Scholarship (Ph.D.) programs at UW-Milwaukee and the Master’s programs at UW-Green Bay, UW-Platteville, and UW-Stout.

**Table 5
The University of Wisconsin System
Historical Profile of Graduate and Professional Headcount Enrollment, Fall 2006 to Fall 2015**

	2006	2007	2008	2009	2010	2011	2012	2013	2014	2015
MSN										
Masters	3,418	3,393	3,368	3,669	3,737	3,657	3,697	3,799	3,883	3,862
Doct-Rsrch/Schlr	5,396	5,451	5,328	5,552	5,731	5,732	5,688	5,606	5,532	5,354
Doct-Prof. Practice	2,575	2,553	2,562	2,508	2,542	2,662	2,571	2,526	2,460	2,483
Total	11,389	11,397	11,258	11,729	12,010	12,051	11,956	11,931	11,875	11,699
MIL										
Masters	3,710	3,925	3,862	4,020	3,991	3,760	3,586	3,385	3,493	3,419
Doct-Rsrch/Schlr	1,004	1,018	1,023	1,114	1,153	1,229	1,233	1,234	1,250	1,220
Doct-Prof. Practice			31	80	87	98	120	161	191	196
Total	4,714	4,943	4,916	5,214	5,231	5,087	4,939	4,780	4,934	4,835
EAU										
Masters	614	665	683	599	599	628	511	464	447	492
Doct-Prof. Practice					14	27	36	55	78	83
Total	614	665	683	599	613	655	547	519	525	575
GBY	156	199	198	269	247	220	179	223	253	251
LAC										
Masters	1,463	1,362	1,115	1,022	939	914	732	686	716	653
Doct-Prof. Practice	45	85	124	116	123	133	133	132	133	131
Total	1,508	1,447	1,239	1,138	1,062	1,047	865	818	849	784
OSH										
Masters	1,528	1,626	1,360	1,520	1,399	1,240	1,102	1,230	1,158	1,269
Doct-Prof. Practice							33	49	72	80
Total	1,528	1,626	1,360	1,520	1,399	1,240	1,135	1,279	1,230	1,349
PKS	134	120	122	150	145	121	168	128	136	143
PLT	680	775	900	832	696	802	838	850	854	967
RVF	476	445	505	506	529	464	401	384	463	451
STP										
Masters	397	418	440	390	423	377	365	332	304	377
Doct-Prof. Practice	7	3	6	15	15	15	16	19	20	21
Total	404	421	446	405	438	392	381	351	324	398
STO										
Masters	855	926	1,070	1,044	1,038	1,003	977	1,095	1,091	1,105
Doct-Prof. Practice								11	26	42
Total	855	926	1,070	1,044	1,038	1,003	977	1,106	1,117	1,147
SUP	298	256	249	218	225	170	150	134	134	127
WTW										
Masters	1,292	1,329	1,341	1,409	1,413	1,415	1,279	1,163	1,188	1,172
Doct-Prof. Practice										37
Total	1,292	1,329	1,341	1,409	1,413	1,415	1,279	1,163	1,188	1,209
UW System	24,048	24,549	24,287	25,033	25,046	24,667	23,815	23,666	23,882	23,935

Between fall 2014 and fall 2015, graduate and professional FTE enrollment increased by 34, or 0.2 percent to 17,630. Overall FTE enrollment in graduate and professional programs has grown by 761 FTE since 2006, or 4.5 percent. Sectors showing the highest FTE growth since 2006 include the Doctorate-Research/Scholarship (PhD) programs at UW-Milwaukee and the Master's programs at UW-Platteville. The Doctorate and Professional Practice category includes enrollment at UW-Madison (audiology, nursing practice, physical therapy, law, medicine, pharmacy, and veterinary medicine), UW-Milwaukee (nursing practice and physical therapy), UW-Eau Claire (nursing practice), UW-La Crosse (physical therapy), UW-Oshkosh (nursing practice), UW-Stevens Point (audiology), and UW-Stout (career and technical education).

Table 6
The University of Wisconsin System
Historical Profile of Graduate and Professional FTE Enrollment, Fall 2006 to Fall 2015

	2006	2007	2008	2009	2010	2011	2012	2013	2014	2015
MSN										
Masters	2,466	2,464	2,469	2,691	2,748	2,671	2,775	2,871	2,933	2,982
Doct-Rsrch/Schlr	4,978	5,006	4,854	5,247	5,445	5,385	5,343	5,136	5,170	5,079
Doct-Prof. Practice	2,581	2,557	2,568	2,554	2,543	2,650	2,549	2,474	2,411	2,463
Total	10,026	10,027	9,891	10,491	10,737	10,706	10,668	10,481	10,513	10,524
MIL										
Masters	2,057	2,222	2,197	2,375	2,388	2,287	2,194	2,107	2,158	2,173
Doct-Rsrch/Schlr	835	837	846	913	979	1,033	1,047	1,048	1,099	1,033
Doct-Prof. Practice			39	84	91	93	114	134	148	153
Total	2,892	3,060	3,082	3,372	3,458	3,412	3,355	3,290	3,405	3,359
EAU										
Masters	257	254	268	270	261	268	237	205	195	213
Doct-Prof. Practice					5	12	23	38	54	55
Total	257	254	268	270	266	280	260	243	249	269
GBY	67	88	90	103	101	101	90	113	122	131
LAC										
Masters	930	863	750	593	549	559	467	436	506	494
Doct-Prof. Practice	68	113	138	121	137	149	147	146	148	145
Total	998	976	888	714	685	707	614	582	654	639
OSH										
Masters	585	616	519	559	524	504	443	484	465	472
Doct-Prof. Practice							22	36	51	58
Total	585	616	519	559	524	504	465	520	516	529
PKS	54	55	68	76	69	62	75	64	66	66
PLT	278	274	311	310	262	317	323	336	344	362
RVF	225	239	272	282	294	260	224	212	249	254
STP										
Masters	191	198	187	187	210	194	188	183	176	167
Doct-Prof. Practice	5	2	4	12	12	11	13	14	15	16
Total	196	199	191	199	221	204	200	197	191	183
STO										
Masters	481	500	554	539	537	500	461	525	532	554
Doct-Prof. Practice								2	11	20
Total	481	500	554	539	537	500	461	527	543	574
SUP	140	121	124	121	113	98	84	73	75	71
WTW										
Masters	670	691	700	769	822	835	748	662	669	643
Doct-Prof. Practice										28
Total	670	691	700	769	822	835	748	662	669	671
UW System	16,869	17,099	16,958	17,807	18,088	17,986	17,566	17,299	17,596	17,630

*Institutional details may not add to total due to rounding.

RESIDENT STATUS OF UW SYSTEM STUDENTS

Undergraduate students with Wisconsin resident status made up 78 percent of the undergraduate enrollment in the UW System in fall 2015 (Table 7). Another 13 percent were classified as nonresident students, and the remaining 9 percent attended a UW System institution under the Minnesota or Michigan Reciprocity programs. Since 2006, the percentage of resident students has declined while the percentage of nonresident undergraduates has increased from 7 percent to 13 percent, due in part to tuition programs targeting out-of-state students. These include the Tri-State Initiative (1,621 headcount enrollment in fall 2015), the Midwest Student Exchange (3,101), and the Return to Wisconsin (94) programs, plus 147 students enrolled under the new veterans tuition discount.

In fall 2015, Wisconsin resident undergraduate enrollment ranged from a low of 48 percent at UW-River Falls to a high of 95 percent at UW-Oshkosh and UW Colleges. Nonresident enrollment ranged from 4 percent at UW Colleges to a high of 28 percent at UW-Madison. Minnesota reciprocity students make up a large proportion of the enrollment at UW institutions near the Minnesota border. The highest level of reciprocity enrollment is found at UW-River Falls, where Minnesota reciprocity students comprised 46 percent of total undergraduate enrollment. Michigan reciprocity is used by a small group of students attending UW-Marinette.

Graduate and professional headcount enrollment by resident status is shown in Table 8. Wisconsin resident graduate and professional students comprised 54 percent of total graduate and professional student enrollment in UW System institutions in fall 2015. Another 43 percent were classified as nonresident students, and 3 percent were Minnesota reciprocity students. Resident graduate and professional enrollment has declined 9 percentage points since fall 2006, while nonresident graduate and professional enrollment has grown 9 percentage points in the same time period.

In fall 2015, Wisconsin resident graduate and professional enrollment ranged from 38 percent at UW-Madison to 95 percent at UW-Oshkosh. Reciprocity students made up 47 percent of the graduate enrollment at UW-Superior and 43 percent of the graduate enrollment at UW-River Falls.

Table 7
The University of Wisconsin System
Historical Profile of Undergraduate Headcount Enrollment by Resident Status
Fall 2006 to Fall 2015

		2006	2007	2008	2009	2010	2011	2012	2013	2014	2015
MSN	Resident	67%	66%	65%	65%	65%	65%	64%	63%	63%	62%
	Nonresident	23%	24%	24%	24%	25%	24%	26%	27%	27%	28%
	Reciprocity	10%	10%	10%	11%	11%	11%	11%	10%	10%	10%
MIL	Resident	97%	96%	95%	95%	95%	94%	93%	91%	89%	88%
	Nonresident	2%	2%	3%	4%	4%	5%	6%	7%	9%	10%
	Reciprocity	1%	1%	1%	1%	1%	2%	2%	2%	2%	2%
EAU	Resident	78%	78%	78%	77%	76%	75%	74%	73%	72%	71%
	Nonresident	2%	2%	2%	3%	3%	4%	4%	5%	5%	6%
	Reciprocity	20%	20%	20%	20%	20%	21%	21%	22%	22%	23%
GBY	Resident	95%	94%	94%	94%	93%	93%	93%	93%	93%	92%
	Nonresident	4%	5%	5%	5%	6%	6%	6%	6%	6%	7%
	Reciprocity	1%	1%	1%	1%	1%	1%	1%	1%	1%	1%
LAC	Resident	83%	82%	82%	81%	81%	81%	81%	80%	80%	81%
	Nonresident	4%	6%	6%	7%	7%	7%	6%	6%	6%	6%
	Reciprocity	13%	12%	12%	12%	12%	12%	13%	13%	13%	13%
OSH	Resident	98%	98%	97%	97%	97%	97%	96%	96%	95%	95%
	Nonresident	2%	2%	2%	2%	2%	3%	3%	4%	5%	5%
	Reciprocity	1%	1%	1%	1%	1%	1%	1%	0%	0%	0%
PKS	Resident	92%	91%	91%	91%	89%	88%	88%	86%	84%	83%
	Nonresident	8%	8%	9%	9%	10%	11%	12%	14%	15%	17%
	Reciprocity	0%	0%	0%	0%	0%	0%	0%	0%	0%	0%
PLT	Resident	86%	84%	82%	81%	79%	78%	76%	76%	75%	75%
	Nonresident	12%	14%	16%	18%	20%	20%	22%	22%	23%	24%
	Reciprocity	2%	2%	2%	2%	2%	1%	2%	2%	2%	2%
RVF	Resident	52%	52%	51%	50%	50%	48%	48%	48%	46%	48%
	Nonresident	2%	2%	3%	3%	3%	3%	3%	5%	7%	6%
	Reciprocity	46%	46%	46%	47%	47%	49%	48%	47%	47%	46%
STP	Resident	92%	92%	91%	91%	90%	91%	90%	89%	88%	87%
	Nonresident	4%	4%	5%	5%	6%	6%	7%	8%	8%	9%
	Reciprocity	4%	4%	4%	4%	4%	4%	4%	4%	4%	4%
STO	Resident	69%	69%	68%	69%	69%	69%	67%	67%	66%	65%
	Nonresident	3%	4%	4%	3%	4%	4%	5%	6%	7%	8%
	Reciprocity	28%	28%	28%	28%	27%	27%	28%	27%	27%	27%
SUP	Resident	54%	53%	53%	53%	52%	52%	51%	51%	51%	49%
	Nonresident	8%	7%	8%	10%	11%	10%	11%	11%	11%	14%
	Reciprocity	38%	41%	39%	38%	37%	38%	38%	38%	38%	38%
WTW	Resident	95%	93%	92%	91%	90%	88%	87%	85%	85%	84%
	Nonresident	5%	6%	7%	9%	10%	11%	13%	14%	15%	15%
	Reciprocity	1%	1%	1%	1%	0%	0%	0%	1%	0%	1%
UWC	Resident	97%	96%	97%	97%	97%	97%	96%	96%	95%	95%
	Nonresident	2%	3%	2%	2%	2%	3%	3%	3%	4%	4%
	Reciprocity	1%	1%	1%	1%	1%	1%	1%	1%	1%	1%
UW System	Resident	84%	83%	82%	82%	82%	81%	80%	80%	79%	78%
	Nonresident	7%	8%	9%	9%	9%	10%	11%	12%	12%	13%
	Reciprocity	9%	9%	9%	9%	9%	9%	9%	9%	9%	9%

Reciprocity includes students enrolled in the Minnesota and Michigan reciprocity programs.

Table 8
The University of Wisconsin System
Historical Profile of Graduate and Professional Headcount Enrollment by Resident Status
Fall 2006 to Fall 2015

		2006	2007	2008	2009	2010	2011	2012	2013	2014	2015
MSN	Resident	44%	45%	44%	43%	43%	43%	41%	39%	39%	38%
	Nonresident	54%	54%	54%	55%	55%	56%	57%	59%	59%	60%
	Reciprocity	2%	2%	2%	2%	2%	2%	2%	2%	2%	2%
MIL	Resident	74%	74%	73%	72%	70%	69%	68%	67%	67%	67%
	Nonresident	24%	25%	25%	26%	27%	29%	30%	31%	32%	31%
	Reciprocity	1%	2%	2%	2%	2%	2%	2%	2%	2%	1%
EAU	Resident	82%	83%	81%	77%	80%	75%	73%	74%	74%	66%
	Nonresident	7%	10%	12%	15%	14%	16%	18%	20%	21%	27%
	Reciprocity	11%	7%	7%	8%	7%	8%	10%	6%	6%	7%
GBY	Resident	94%	94%	97%	96%	96%	96%	93%	91%	85%	89%
	Nonresident	4%	5%	3%	4%	3%	3%	4%	9%	15%	11%
	Reciprocity	2%	1%	0%	0%	0%	1%	3%	1%	1%	0%
LAC	Resident	86%	84%	79%	80%	79%	75%	70%	68%	68%	65%
	Nonresident	7%	9%	12%	10%	11%	14%	16%	18%	19%	21%
	Reciprocity	7%	7%	9%	9%	9%	11%	14%	14%	13%	14%
OSH	Resident	97%	97%	96%	96%	97%	97%	97%	95%	93%	95%
	Nonresident	3%	3%	3%	4%	2%	3%	3%	5%	7%	5%
	Reciprocity	0%	0%	0%	0%	0%	0%	0%	0%	0%	0%
PKS	Resident	89%	86%	70%	80%	83%	85%	86%	77%	77%	75%
	Nonresident	11%	14%	30%	20%	17%	15%	14%	23%	23%	25%
	Reciprocity	0%	0%	0%	0%	0%	0%	0%	0%	0%	0%
PLT	Resident	59%	62%	60%	59%	62%	55%	53%	56%	50%	51%
	Nonresident	41%	37%	40%	41%	38%	45%	47%	44%	50%	49%
	Reciprocity	0%	0%	0%	0%	0%	0%	0%	0%	0%	0%
RVF	Resident	64%	64%	65%	62%	67%	63%	53%	46%	50%	46%
	Nonresident	6%	6%	10%	7%	5%	7%	9%	16%	11%	12%
	Reciprocity	30%	31%	26%	31%	28%	30%	37%	39%	39%	43%
STP	Resident	88%	86%	86%	83%	82%	75%	77%	72%	73%	83%
	Nonresident	10%	11%	12%	15%	15%	21%	19%	22%	21%	12%
	Reciprocity	2%	3%	2%	2%	3%	5%	4%	6%	6%	5%
STO	Resident	71%	67%	67%	66%	65%	62%	59%	60%	60%	59%
	Nonresident	21%	26%	25%	25%	26%	29%	32%	32%	33%	33%
	Reciprocity	8%	7%	9%	9%	8%	9%	9%	8%	8%	8%
SUP	Resident	61%	61%	57%	58%	60%	51%	49%	44%	49%	43%
	Nonresident	3%	3%	2%	3%	4%	4%	4%	7%	5%	9%
	Reciprocity	37%	36%	41%	39%	36%	45%	47%	49%	46%	47%
WTW	Resident	87%	86%	85%	87%	85%	81%	78%	81%	82%	82%
	Nonresident	12%	13%	14%	13%	15%	18%	21%	19%	18%	17%
	Reciprocity	0%	0%	1%	0%	0%	1%	1%	1%	0%	1%
UW System	Resident	63%	63%	61%	61%	60%	58%	56%	55%	54%	54%
	Nonresident	34%	34%	35%	36%	37%	38%	41%	42%	43%	43%
	Reciprocity	3%	3%	3%	3%	3%	3%	4%	3%	3%	3%

Reciprocity includes students enrolled in the Minnesota reciprocity program.

FULL-TIME/PART-TIME STATUS OF UW SYSTEM UNDERGRADUATE STUDENTS

Part-time students made up 18 percent of the undergraduate enrollment in the UW System in fall 2015 (Table 9). The percentage of part-time undergraduate students has been relatively stable at 15 to 18 percent since 2006. In fall 2015, part-time undergraduate student enrollment ranged from a low of 6 percent at UW-La Crosse to a high of 51 percent at UW Colleges.

Table 9
The University of Wisconsin System
Historical Profile of Undergraduate Headcount Enrollment, by Full-Time/Part-Time Status
Fall 2006 to Fall 2015

		2006	2007	2008	2009	2010	2011	2012	2013	2014	2015
MSN	Full-time	91%	91%	91%	92%	92%	91%	91%	91%	90%	90%
	Part-time	9%	9%	9%	8%	8%	9%	9%	9%	10%	10%
MIL	Full-time	82%	83%	83%	83%	83%	83%	82%	82%	81%	82%
	Part-time	18%	17%	17%	17%	17%	17%	18%	18%	19%	18%
EAU	Full-time	93%	93%	93%	92%	91%	92%	92%	91%	91%	92%
	Part-time	7%	7%	7%	8%	9%	8%	8%	9%	9%	8%
GBY	Full-time	78%	78%	77%	77%	75%	72%	70%	67%	63%	61%
	Part-time	22%	22%	23%	23%	25%	28%	30%	33%	37%	39%
LAC	Full-time	95%	95%	95%	94%	94%	94%	94%	94%	94%	94%
	Part-time	5%	5%	5%	6%	6%	6%	6%	6%	6%	6%
OSH	Full-time	79%	78%	77%	79%	77%	76%	75%	73%	67%	68%
	Part-time	21%	22%	23%	21%	23%	24%	25%	27%	33%	32%
PKS	Full-time	71%	73%	73%	72%	73%	71%	71%	74%	75%	76%
	Part-time	29%	27%	27%	28%	27%	29%	29%	26%	25%	24%
PLT	Full-time	90%	89%	90%	90%	90%	90%	90%	89%	89%	89%
	Part-time	10%	11%	10%	10%	10%	10%	10%	11%	11%	11%
RVF	Full-time	93%	93%	93%	93%	92%	91%	91%	90%	91%	89%
	Part-time	7%	7%	7%	7%	8%	9%	9%	10%	9%	11%
STP	Full-time	92%	93%	93%	94%	94%	93%	93%	93%	92%	92%
	Part-time	8%	7%	7%	6%	6%	7%	7%	7%	8%	8%
STO	Full-time	89%	88%	88%	85%	84%	83%	83%	83%	83%	82%
	Part-time	11%	12%	12%	15%	16%	17%	17%	17%	17%	18%
SUP	Full-time	80%	82%	80%	81%	81%	79%	79%	80%	78%	79%
	Part-time	20%	18%	20%	19%	19%	21%	21%	20%	22%	21%
WTW	Full-time	92%	92%	93%	94%	93%	93%	92%	91%	91%	89%
	Part-time	8%	8%	7%	6%	7%	7%	8%	9%	9%	11%
UWC	Full-time	64%	64%	63%	64%	63%	61%	59%	57%	52%	49%
	Part-time	36%	36%	37%	36%	37%	39%	41%	43%	48%	51%
UW System	Full-time	85%	85%	85%	85%	85%	84%	84%	83%	82%	82%
	Part-time	15%	15%	15%	15%	15%	16%	16%	17%	18%	18%

FULL-TIME/PART-TIME STATUS OF UW SYSTEM GRADUATE AND PROFESSIONAL STUDENTS

Part-time students made up 40 percent of the graduate and professional enrollment in the UW System in fall 2015 (Table 10). In fall 2015, part-time graduate and professional student enrollment ranged from a low of 17 percent at UW-Madison to a high of 91 percent at UW-Platteville.

Table 10
The University of Wisconsin System
Historical Profile of Graduate and Professional Headcount Enrollment, by Full-Time/Part-Time Status
Fall 2006 to Fall 2015

		2005	2006	2007	2008	2009	2010	2011	2012	2013	2014
MSN	Full-time	83%	82%	82%	83%	82%	82%	82%	82%	82%	83%
	Part-time	17%	18%	18%	17%	18%	18%	18%	18%	18%	17%
MIL	Full-time	44%	45%	45%	47%	49%	51%	53%	54%	55%	53%
	Part-time	56%	55%	55%	53%	51%	49%	47%	46%	45%	47%
EAU	Full-time	24%	19%	16%	17%	19%	19%	18%	21%	21%	22%
	Part-time	76%	81%	84%	83%	81%	81%	82%	79%	79%	78%
GBY	Full-time	21%	24%	23%	21%	17%	19%	25%	30%	26%	23%
	Part-time	79%	76%	77%	79%	83%	81%	75%	70%	74%	77%
LAC	Full-time	29%	27%	30%	36%	29%	33%	39%	44%	48%	53%
	Part-time	71%	73%	70%	64%	71%	67%	61%	56%	52%	47%
OSH	Full-time	13%	12%	13%	12%	13%	10%	13%	14%	14%	15%
	Part-time	87%	88%	87%	88%	87%	90%	87%	86%	86%	85%
PKS	Full-time	16%	13%	13%	25%	29%	21%	24%	20%	26%	22%
	Part-time	84%	87%	87%	75%	71%	79%	76%	80%	74%	78%
PLT	Full-time	12%	18%	9%	10%	9%	9%	16%	13%	12%	12%
	Part-time	88%	83%	91%	90%	91%	91%	84%	87%	88%	88%
RVF	Full-time	26%	21%	28%	24%	29%	27%	30%	35%	33%	31%
	Part-time	74%	79%	72%	76%	71%	73%	70%	65%	67%	69%
STP	Full-time	29%	29%	29%	25%	27%	33%	30%	38%	34%	35%
	Part-time	71%	71%	71%	75%	73%	67%	70%	62%	66%	65%
STO	Full-time	38%	35%	31%	29%	29%	26%	25%	24%	24%	23%
	Part-time	62%	65%	69%	71%	71%	74%	75%	76%	76%	77%
SUP	Full-time	38%	26%	23%	31%	35%	32%	41%	39%	38%	41%
	Part-time	62%	74%	77%	69%	65%	68%	59%	61%	62%	59%
WTW	Full-time	28%	28%	28%	27%	29%	35%	39%	39%	36%	33%
	Part-time	72%	72%	72%	73%	71%	65%	61%	61%	64%	67%
UW System	Full-time	56%	55%	55%	56%	56%	58%	59%	61%	60%	60%
	Part-time	44%	45%	45%	44%	44%	42%	41%	39%	40%	40%

Appendices

Fall 2015

Detailed breakdown of enrollment for the overall UW System and individual institutions.

**The University of Wisconsin System
Fall 2015**

	Fresh.	Soph.	Junior	Senior	UG Spec.	UG Total	GR Spec.	Masters	Doctorate-Rsrch/ Schlrshp	Doctorate-Prof. Practice	Male	Female	Total
Total Headcount	36,813	32,541	30,267	43,071	11,944	154,636	1,725	12,563	6,574	3,073	83,363	95,208	178,571
Full-Time Equiv. (FTE)	34,109	29,681	27,977	37,222	4,213	133,202	480	8,102	6,112	2,937	71,242	79,591	150,833
Entrance Status													
New	27,110	2,009	128	13	8,155	37,415	593	3,946	814	765	19,445	24,088	43,533
Continuing	7,047	25,891	26,454	41,144	3,230	103,766	917	8,460	5,688	2,292	57,121	64,002	121,123
Re-entry	558	550	418	733	559	2,818	215	157	72	16	1,634	1,644	3,278
Transfer	2,098	4,091	3,267	1,181	0	10,637	0	0	0	0	5,163	5,474	10,637
Resident Status													
Resident	29,048	25,349	22,895	33,208	10,208	120,708	1,425	7,912	1,356	2,255	61,742	71,914	133,656
Non-Resident	4,593	4,265	4,321	5,563	1,613	20,355	281	4,014	5,173	719	15,590	14,952	30,542
Reciprocity	3,172	2,927	3,051	4,300	123	13,573	19	637	45	99	6,031	8,342	14,373
Race/Ethnicity													
African American	1,493	1,069	930	1,114	221	4,827	62	441	194	101	2,670	2,955	5,625
Hispanic/Latino	2,321	1,706	1,448	1,781	412	7,668	41	446	349	97	3,958	4,643	8,601
American Indian	139	99	113	209	45	605	6	54	13	12	291	399	690
SE Asian American	939	737	608	884	89	3,257	7	128	47	26	1,575	1,890	3,465
Other Asian American	550	567	579	871	321	2,888	30	288	200	187	1,746	1,847	3,593
Hawaiian/Pacific Islander	29	36	29	42	12	148	1	11	3	2	83	82	165
Two or More Races	1,399	971	730	970	223	4,293	14	186	140	46	2,114	2,565	4,679
International	1,010	1,018	974	1,436	1,016	5,454	34	1,527	2,189	73	5,229	4,048	9,277
White/Unknown	28,933	26,338	24,856	35,764	9,605	125,496	1,530	9,482	3,439	2,529	65,697	76,779	142,476
Full-Time/Part-Time Status													
Part-Time	3,095	3,713	2,938	8,071	10,573	28,390	1,643	6,571	1,009	411	16,206	21,818	38,024
Full-Time	33,718	28,828	27,329	35,000	1,371	126,246	82	5,992	5,565	2,662	67,157	73,390	140,547
Age Range													
19 and Under	31,450	16,226	2,404	190	6,094	56,364	0	0	0	1	24,971	31,394	56,365
20-24	3,959	13,684	24,359	33,262	1,976	77,240	93	3,638	1,068	1,344	40,125	43,258	83,383
25-29	655	1,248	1,594	4,795	983	9,275	258	4,085	2,792	1,188	8,925	8,673	17,598
30 and Over	749	1,383	1,910	4,823	2,881	11,746	1,373	4,839	2,714	540	9,336	11,876	21,212
Unknown	0	0	0	1	10	11	1	1	0	0	6	7	13
Gender													
Male	17,666	15,605	14,383	20,448	4,781	72,883	383	5,336	3,561	1,200	83,363	0	83,363
Female	19,147	16,936	15,884	22,623	7,163	81,753	1,342	7,227	3,013	1,873	0	95,208	95,208
Headcount History													
2014	37,842	32,813	30,557	43,511	12,374	157,097	1,587	12,533	6,782	2,980	84,369	96,610	180,979
2013	38,784	33,157	30,751	43,429	10,041	156,162	1,630	12,243	6,840	2,953	83,993	95,835	179,828
2012	39,823	33,635	30,665	43,653	9,378	157,154	1,764	12,221	6,921	2,909	84,347	96,622	180,969
2011	40,363	33,742	30,585	43,090	8,822	156,602	1,647	13,124	6,961	2,935	84,458	96,811	181,269
2010	41,365	34,062	30,043	42,620	8,954	157,044	1,895	13,486	6,884	2,781	84,940	97,150	182,090

**The University of Wisconsin System
UW-Eau Claire Fall 2015**

	Fresh.	Soph.	Junior	Senior	UG Spec.	UG Total	GR Spec.	Masters	Doctorate-Rsrch/ Schlrshp	Doctorate-Prof. Practice	Male	Female	Total
Total Headcount	2,644	2,098	2,006	3,007	201	9,956	69	423	0	83	4,134	6,397	10,531
Full-Time Equiv. (FTE)	2,597	2,024	1,927	2,694	111	9,351	16	197	0	55	3,787	5,833	9,620
Entrance Status													
New	2,149	89	1	0	153	2,392	30	112	0	0	922	1,636	2,534
Continuing	380	1,773	1,861	2,881	48	6,943	39	311	0	0	2,925	4,427	7,293
Re-entry	13	20	14	36	0	83	0	0	0	0	55	28	83
Transfer	102	216	130	90	0	538	0	0	0	0	232	306	538
Resident Status													
Resident	1,805	1,473	1,468	2,238	84	7,068	63	246	0	70	2,951	4,496	7,447
Non-Resident	123	96	85	133	116	553	3	153	0	0	290	419	709
Reciprocity	716	529	453	636	1	2,335	3	24	0	13	893	1,482	2,375
Race/Ethnicity													
African American	37	15	18	19	1	90	0	5	0	2	64	33	97
Hispanic/Latino	75	54	43	52	6	230	3	11	0	1	115	130	245
American Indian	2	7	8	8	0	25	0	0	0	0	14	11	25
SE Asian American	77	58	52	64	1	252	0	3	0	0	87	168	255
Other Asian American	23	25	17	36	5	106	1	20	0	1	49	79	128
Hawaiian/Pacific Islander	3	2	1	2	1	9	0	0	0	0	4	5	9
Two or More Races	68	39	32	47	3	189	1	6	0	0	83	113	196
International	36	48	39	39	81	243	0	5	0	0	112	136	248
White/Unknown	2,323	1,850	1,796	2,740	103	8,812	64	373	0	79	3,606	5,722	9,328
Full-Time/Part-Time Status													
Part-Time	22	83	100	442	116	763	68	354	0	58	452	791	1,243
Full-Time	2,622	2,015	1,906	2,565	85	9,193	1	69	0	25	3,682	5,606	9,288
Age Range													
19 and Under	2,512	1,234	84	0	46	3,876	0	0	0	0	1,423	2,453	3,876
20-24	116	804	1,813	2,551	85	5,369	2	83	0	5	2,243	3,216	5,459
25-29	14	26	54	237	19	350	12	125	0	30	233	284	517
30 and Over	2	34	55	219	51	361	55	215	0	48	235	444	679
Gender													
Male	1,019	878	790	1,173	68	3,928	20	179	0	7	4,134	0	4,134
Female	1,625	1,220	1,216	1,834	133	6,028	49	244	0	76	0	6,397	6,397
Headcount History													
2014	2,523	2,141	2,166	3,090	247	10,167	63	384	0	78	4,314	6,378	10,692
2013	2,504	2,251	2,178	3,211	244	10,388	74	390	0	55	4,459	6,448	10,907
2012	2,574	2,220	2,290	3,200	216	10,500	77	434	0	36	4,581	6,466	11,047
2011	2,523	2,363	2,219	3,292	182	10,579	138	490	0	27	4,633	6,601	11,234
2010	2,659	2,356	2,270	3,260	255	10,800	109	490	0	14	4,658	6,755	11,413

**The University of Wisconsin System
UW-Green Bay Fall 2015**

	Fresh.	Soph.	Junior	Senior	UG Spec.	UG Total	GR Spec.	Masters	Doctorate-Rsrch/ Schlrshp	Doctorate-Prof. Practice	Male	Female	Total
Total Headcount	869	1,049	1,314	2,255	1,041	6,528	33	218	0	0	2,247	4,532	6,779
Full-Time Equiv. (FTE)	824	919	1,044	1,653	264	4,704	7	124	0	0	1,644	3,190	4,834
Entrance Status													
New	746	42	1	0	934	1,723	7	80	0	0	594	1,216	1,810
Continuing	64	788	1,020	2,067	76	4,015	13	130	0	0	1,384	2,774	4,158
Re-entry	9	10	34	45	31	129	13	8	0	0	43	107	150
Transfer	50	209	259	143	0	661	0	0	0	0	226	435	661
Resident Status													
Resident	799	962	1,211	2,043	1,008	6,023	33	190	0	0	2,048	4,198	6,246
Non-Resident	64	70	85	191	31	441	0	28	0	0	170	299	469
Reciprocity	6	17	18	21	2	64	0	0	0	0	29	35	64
Race/Ethnicity													
African American	18	17	26	28	11	100	0	4	0	0	53	51	104
Hispanic/Latino	47	44	59	76	25	251	0	5	0	0	97	159	256
American Indian	5	7	27	28	22	89	1	7	0	0	35	62	97
SE Asian American	16	31	36	40	12	135	0	4	0	0	53	86	139
Other Asian American	11	7	16	15	15	64	0	5	0	0	24	45	69
Hawaiian/Pacific Islander	1	0	1	5	1	8	0	0	0	0	0	8	8
Two or More Races	29	24	30	51	12	146	0	8	0	0	49	105	154
International	21	18	23	20	21	103	0	5	0	0	62	46	108
White/Unknown	721	901	1,096	1,992	922	5,632	32	180	0	0	1,874	3,970	5,844
Full-Time/Part-Time Status													
Part-Time	68	163	378	902	1,010	2,521	33	160	0	0	836	1,878	2,714
Full-Time	801	886	936	1,353	31	4,007	0	58	0	0	1,411	2,654	4,065
Age Range													
19 and Under	787	532	36	4	862	2,221	0	0	0	0	695	1,526	2,221
20-24	49	386	844	1,211	55	2,545	1	32	0	0	906	1,672	2,578
25-29	6	49	138	380	29	602	0	70	0	0	250	422	672
30 and Over	27	82	296	660	88	1,153	32	116	0	0	393	908	1,301
Unknown	0	0	0	0	7	7	0	0	0	0	3	4	7
Gender													
Male	285	359	456	723	350	2,173	9	65	0	0	2,247	0	2,247
Female	584	690	858	1,532	691	4,355	24	153	0	0	0	4,532	4,532
Headcount History													
2014	879	1,074	1,421	2,287	1,007	6,668	51	202	0	0	2,387	4,534	6,921
2013	959	1,159	1,376	2,257	693	6,444	39	184	0	0	2,310	4,357	6,667
2012	1,098	1,200	1,445	2,330	538	6,611	53	126	0	0	2,381	4,409	6,790
2011	1,068	1,236	1,481	2,309	351	6,445	96	124	0	0	2,419	4,246	6,665
2010	1,109	1,347	1,453	2,176	304	6,389	95	152	0	0	2,408	4,228	6,636

**The University of Wisconsin System
UW-La Crosse Fall 2015**

	Fresh.	Soph.	Junior	Senior	UG Spec.	UG Total	GR Spec.	Masters	Doctorate-Rsrch/ Schlrshp	Doctorate-Prof. Practice	Male	Female	Total
Total Headcount	2,511	2,122	2,082	2,722	265	9,702	47	606	0	131	4,497	5,989	10,486
Full-Time Equiv. (FTE)	2,491	2,109	2,039	2,533	126	9,298	10	484	0	145	4,230	5,707	9,937
Entrance Status													
New	2,024	38	1	8	184	2,255	21	177	0	0	972	1,481	2,453
Continuing	325	1,822	1,944	2,664	58	6,813	11	427	0	0	3,181	4,201	7,251
Re-entry	17	19	22	33	23	114	15	2	0	0	66	65	131
Transfer	145	243	115	17	0	520	0	0	0	0	278	242	520
Resident Status													
Resident	2,076	1,728	1,666	2,185	167	7,822	42	366	0	102	3,653	4,679	8,332
Non-Resident	140	96	118	136	94	584	3	162	0	3	338	414	752
Reciprocity	295	298	298	401	4	1,296	2	78	0	26	506	896	1,402
Race/Ethnicity													
African American	29	16	14	16	4	79	0	5	0	0	48	36	84
Hispanic/Latino	110	64	60	71	3	308	0	14	0	0	156	166	322
American Indian	5	3	5	4	0	17	0	2	0	0	10	9	19
SE Asian American	33	28	31	30	1	123	0	9	0	1	65	68	133
Other Asian American	34	18	22	23	3	100	1	12	0	0	50	63	113
Hawaiian/Pacific Islander	0	2	1	2	0	5	0	0	0	0	4	1	5
Two or More Races	78	49	41	48	7	223	0	8	0	1	105	127	232
International	32	17	41	41	72	203	1	39	0	0	137	106	243
White/Unknown	2,190	1,925	1,867	2,487	175	8,644	45	517	0	129	3,922	5,413	9,335
Full-Time/Part-Time Status													
Part-Time	20	52	69	241	188	570	47	253	0	43	356	557	913
Full-Time	2,491	2,070	2,013	2,481	77	9,132	0	353	0	88	4,141	5,432	9,573
Age Range													
19 and Under	2,349	1,244	94	3	113	3,803	0	0	0	0	1,482	2,321	3,803
20-24	146	838	1,923	2,475	91	5,473	0	280	0	96	2,640	3,209	5,849
25-29	8	29	44	158	12	251	3	182	0	31	229	238	467
30 and Over	8	11	21	86	49	175	44	144	0	4	146	221	367
Gender													
Male	1,077	952	941	1,176	103	4,249	7	196	0	45	4,497	0	4,497
Female	1,434	1,170	1,141	1,546	162	5,453	40	410	0	86	0	5,989	5,989
Headcount History													
2014	2,435	2,181	2,150	2,698	351	9,815	109	607	0	133	4,562	6,102	10,664
2013	2,510	2,181	2,158	2,451	384	9,684	134	552	0	132	4,498	6,004	10,502
2012	2,436	2,210	1,930	2,551	388	9,515	159	573	0	133	4,288	6,092	10,380
2011	2,522	1,994	1,900	2,376	419	9,211	198	716	0	133	4,226	6,032	10,258
2010	2,384	1,983	1,811	2,404	491	9,073	153	786	0	123	4,221	5,914	10,135

**The University of Wisconsin System
UW-Madison Fall 2015**

	Fresh.	Soph.	Junior	Senior	UG Spec.	UG Total	GR Spec.	Masters	Doctorate-Rsrch/ Schlrshp	Doctorate-Prof. Practice	Male	Female	Total
Total Headcount	4,683	6,536	7,706	10,359	2,081	31,365	0	3,862	5,354	2,483	21,316	21,748	43,064
Full-Time Equiv. (FTE)	4,464	6,286	7,364	9,407	787	28,308	0	2,982	5,079	2,463	19,194	19,638	38,832
Entrance Status													
New	4,602	1,560	105	2	1,001	7,270	0	1,509	691	617	4,910	5,219	10,087
Continuing	62	4,341	6,909	10,007	957	22,276	0	2,294	4,617	1,566	15,399	15,597	30,753
Re-entry	10	36	53	123	123	345	0	59	46	13	261	204	463
Transfer	9	599	639	227	0	1,474	0	0	0	0	746	728	1,474
Resident Status													
Resident	2,776	3,977	4,793	6,479	1,453	19,478	0	1,820	863	1,765	11,664	12,262	23,926
Non-Resident	1,556	1,882	2,103	2,688	619	8,848	0	1,920	4,461	663	8,138	7,754	15,892
Reciprocity	351	677	810	1,192	9	3,039	0	122	30	55	1,514	1,732	3,246
Race/Ethnicity													
African American	119	143	173	173	46	654	0	73	147	75	427	522	949
Hispanic/Latino	247	313	384	442	52	1,438	0	152	301	84	928	1,047	1,975
American Indian	13	12	14	23	3	65	0	16	11	10	43	59	102
SE Asian American	71	97	130	190	8	496	0	23	41	18	220	358	578
Other Asian American	159	237	286	455	83	1,220	0	103	161	175	824	835	1,659
Hawaiian/Pacific Islander	7	8	7	16	2	40	0	1	3	1	23	22	45
Two or More Races	181	193	212	280	37	903	0	52	124	40	516	603	1,119
International	380	551	524	860	444	2,759	0	919	1,772	68	3,042	2,476	5,518
White/Unknown	3,506	4,982	5,976	7,920	1,406	23,790	0	2,523	2,794	2,012	15,293	15,826	31,119
Full-Time/Part-Time Status													
Part-Time	18	54	227	1,127	1,679	3,105	0	1,230	592	128	2,531	2,524	5,055
Full-Time	4,665	6,482	7,479	9,232	402	28,260	0	2,632	4,762	2,355	18,785	19,224	38,009
Age Range													
19 and Under	4,624	5,364	1,835	153	129	12,105	0	0	0	1	5,706	6,400	12,106
20-24	55	1,140	5,675	9,545	614	17,029	0	1,521	1,008	1,175	10,286	10,447	20,733
25-29	2	21	109	344	318	794	0	1,338	2,363	1,004	2,901	2,598	5,499
30 and Over	2	11	87	317	1,020	1,437	0	1,003	1,983	303	2,423	2,303	4,726
Gender													
Male	2,152	3,262	3,791	5,216	1,077	15,498	0	1,792	2,972	1,054	21,316	0	21,316
Female	2,531	3,274	3,915	5,143	1,004	15,867	0	2,070	2,382	1,429	0	21,748	21,748
Headcount History													
2014	4,946	6,242	7,492	10,328	1,982	30,990	0	3,883	5,532	2,460	21,180	21,685	42,865
2013	5,208	6,260	7,475	10,225	1,804	30,972	0	3,799	5,606	2,526	21,110	21,793	42,903
2012	5,232	6,104	7,507	9,955	1,709	30,507	0	3,697	5,688	2,571	20,764	21,699	42,463
2011	5,028	6,168	7,293	9,890	1,635	30,014	0	3,657	5,732	2,662	20,519	21,546	42,065
2010	5,239	6,006	7,155	10,125	1,645	30,170	0	3,737	5,731	2,542	20,544	21,636	42,180

**The University of Wisconsin System
UW-Milwaukee Fall 2015**

	Fresh.	Soph.	Junior	Senior	UG Spec.	UG Total	GR Spec.	Masters	Doctorate-Rsrch/ Schlrshp	Doctorate-Prof. Practice	Male	Female	Total
Total Headcount	4,514	4,887	4,444	7,043	1,396	22,284	370	3,049	1,220	196	12,751	14,368	27,119
Full-Time Equiv. (FTE)	4,222	4,446	3,963	5,922	579	19,132	143	2,030	1,033	153	10,707	11,784	22,491
Entrance Status													
New	3,257	54	2	2	394	3,709	181	896	123	0	2,170	2,757	4,909
Continuing	901	3,935	3,858	6,724	852	16,270	156	2,100	1,071	0	9,381	10,393	19,597
Re-entry	69	91	68	150	150	528	33	53	26	0	293	348	640
Transfer	287	807	516	167	0	1,777	0	0	0	0	907	870	1,777
Resident Status													
Resident	3,905	4,239	3,903	6,400	1,210	19,657	319	2,250	493	185	10,757	12,147	22,904
Non-Resident	536	560	462	525	184	2,267	51	743	712	11	1,812	1,972	3,784
Reciprocity	73	88	79	118	2	360	0	56	15	0	182	249	431
Race/Ethnicity													
African American	444	436	354	484	72	1,790	36	157	47	13	808	1,235	2,043
Hispanic/Latino	537	486	384	513	81	2,001	19	147	48	9	997	1,227	2,224
American Indian	15	20	15	41	2	93	1	9	2	0	44	61	105
SE Asian American	227	218	147	269	13	874	4	34	6	7	476	449	925
Other Asian American	121	113	115	201	48	598	13	70	39	5	362	363	725
Hawaiian/Pacific Islander	6	5	7	4	3	25	0	0	0	1	13	13	26
Two or More Races	224	204	157	201	25	811	10	75	16	3	384	531	915
International	175	200	166	218	117	876	15	306	417	1	980	635	1,615
White/Unknown	2,765	3,205	3,099	5,112	1,035	15,216	272	2,251	645	157	8,687	9,854	18,541
Full-Time/Part-Time Status													
Part-Time	199	471	595	1,618	1,117	4,000	318	1,367	417	85	2,678	3,509	6,187
Full-Time	4,315	4,416	3,849	5,425	279	18,284	52	1,682	803	111	10,073	10,859	20,932
Age Range													
19 and Under	3,734	1,804	68	6	164	5,776	0	0	0	0	2,531	3,245	5,776
20-24	605	2,534	3,448	4,387	313	11,287	41	855	60	45	5,899	6,389	12,288
25-29	95	288	495	1,440	236	2,554	90	1,140	429	77	2,148	2,142	4,290
30 and Over	80	261	433	1,210	683	2,667	239	1,054	731	74	2,173	2,592	4,765
Gender													
Male	2,144	2,351	2,181	3,595	519	10,790	128	1,206	589	38	12,751	0	12,751
Female	2,370	2,536	2,263	3,448	877	11,494	242	1,843	631	158	0	14,368	14,368
Headcount History													
2014	4,824	4,843	4,751	7,134	1,527	23,079	415	3,078	1,250	191	13,240	14,773	28,013
2013	4,731	5,030	4,840	7,130	1,273	23,004	411	2,974	1,234	161	13,246	14,538	27,784
2012	5,048	5,352	4,929	7,356	1,490	24,175	416	3,170	1,233	120	13,801	15,313	29,114
2011	5,281	5,457	5,016	7,410	1,475	24,639	387	3,373	1,229	98	14,112	15,614	29,726
2010	5,441	5,738	5,170	7,287	1,603	25,239	412	3,579	1,153	87	14,482	15,988	30,470

**The University of Wisconsin System
UW-Oshkosh Fall 2015**

	Fresh.	Soph.	Junior	Senior	UG Spec.	UG Total	GR Spec.	Masters	Doctorate-Rsrch/ Schlrshp	Doctorate-Prof. Practice	Male	Female	Total
Total Headcount	2,314	2,004	2,366	3,257	2,769	12,710	421	848	0	80	5,579	8,480	14,059
Full-Time Equiv. (FTE)	2,324	1,932	2,162	2,743	962	10,124	83	389	0	58	4,401	6,252	10,654
Entrance Status													
New	1,551	21	0	0	2,738	4,310	16	247	0	0	1,704	2,890	4,573
Continuing	546	1,613	2,015	3,052	30	7,256	320	597	0	0	3,348	4,884	8,173
Re-entry	18	35	53	86	1	193	85	4	0	0	115	167	282
Transfer	199	335	298	119	0	951	0	0	0	0	412	539	951
Resident Status													
Resident	2,116	1,867	2,241	3,088	2,711	12,023	408	792	0	75	5,269	8,029	13,298
Non-Resident	183	122	110	155	58	628	13	54	0	4	287	412	699
Reciprocity	15	15	15	14	0	59	0	2	0	1	23	39	62
Race/Ethnicity													
African American	100	42	46	43	13	244	1	18	0	1	124	140	264
Hispanic/Latino	108	60	89	99	100	456	7	20	0	2	199	286	485
American Indian	10	10	11	39	5	75	2	11	0	1	32	57	89
SE Asian American	71	73	62	105	37	348	1	13	0	0	132	230	362
Other Asian American	11	22	17	24	71	145	2	10	0	2	53	106	159
Hawaiian/Pacific Islander	1	0	1	2	3	7	1	2	0	0	4	6	10
Two or More Races	63	67	40	49	78	297	0	2	0	1	128	172	300
International	15	13	10	25	34	97	2	28	0	2	66	63	129
White/Unknown	1,935	1,717	2,090	2,871	2,428	11,041	405	744	0	71	4,841	7,420	12,261
Full-Time/Part-Time Status													
Part-Time	115	180	343	757	2,667	4,062	414	683	0	49	1,834	3,374	5,208
Full-Time	2,199	1,824	2,023	2,500	102	8,648	7	165	0	31	3,745	5,106	8,851
Age Range													
19 and Under	2,020	806	34	1	2,692	5,553	0	0	0	0	2,072	3,481	5,553
20-24	209	1,068	1,992	2,288	26	5,583	8	114	0	14	2,470	3,249	5,719
25-29	27	67	129	453	10	686	44	260	0	34	453	571	1,024
30 and Over	58	63	211	514	40	886	368	474	0	32	583	1,177	1,760
Unknown	0	0	0	1	1	2	1	0	0	0	1	2	3
Gender													
Male	1,021	810	1,047	1,346	981	5,205	51	315	0	8	5,579	0	5,579
Female	1,293	1,194	1,319	1,911	1,788	7,505	370	533	0	72	0	8,480	8,480
Headcount History													
2014	2,491	2,144	2,263	3,419	2,995	13,312	270	888	0	72	5,626	8,916	14,542
2013	2,661	2,028	2,334	3,596	2,004	12,623	334	896	0	49	5,495	8,407	13,902
2012	2,729	2,163	2,325	3,556	1,611	12,384	246	856	0	33	5,494	8,025	13,519
2011	2,854	2,097	2,389	3,453	1,480	12,273	282	958	0	0	5,460	8,053	13,513
2010	2,951	2,116	2,345	3,405	1,413	12,230	420	979	0	0	5,501	8,128	13,629

**The University of Wisconsin System
UW-Parkside Fall 2015**

	Fresh.	Soph.	Junior	Senior	UG Spec.	UG Total	GR Spec.	Masters	Doctorate-Rsrch/ Schlrshp	Doctorate-Prof. Practice	Male	Female	Total
Total Headcount	914	875	988	1,391	132	4,300	24	119	0	0	2,108	2,335	4,443
Full-Time Equiv. (FTE)	826	748	851	1,101	37	3,564	4	62	0	0	1,751	1,880	3,631
Entrance Status													
New	611	7	1	1	71	691	18	23	0	0	324	408	732
Continuing	207	711	810	1,276	44	3,048	6	95	0	0	1,524	1,625	3,149
Re-entry	23	23	11	49	17	123	0	1	0	0	58	66	124
Transfer	73	134	166	65	0	438	0	0	0	0	202	236	438
Resident Status													
Resident	765	729	784	1,146	127	3,551	24	83	0	0	1,736	1,922	3,658
Non-Resident	145	145	202	244	5	741	0	36	0	0	364	413	777
Reciprocity	4	1	2	1	0	8	0	0	0	0	8	0	8
Race/Ethnicity													
African American	99	77	75	117	1	369	0	9	0	0	159	219	378
Hispanic/Latino	151	125	122	158	13	569	0	10	0	0	262	317	579
American Indian	1	0	1	5	0	7	0	0	0	0	4	3	7
SE Asian American	5	9	8	8	1	31	0	0	0	0	15	16	31
Other Asian American	16	30	25	30	4	105	0	5	0	0	66	44	110
Hawaiian/Pacific Islander	0	2	2	3	1	8	0	0	0	0	6	2	8
Two or More Races	42	34	36	49	5	166	0	1	0	0	78	89	167
International	26	17	19	13	0	75	0	25	0	0	51	49	100
White/Unknown	574	581	700	1,008	107	2,970	24	69	0	0	1,467	1,596	3,063
Full-Time/Part-Time Status													
Part-Time	111	176	179	433	129	1,028	24	91	0	0	489	654	1,143
Full-Time	803	699	809	958	3	3,272	0	28	0	0	1,619	1,681	3,300
Age Range													
19 and Under	725	330	14	2	52	1,123	0	0	0	0	486	637	1,123
20-24	136	437	750	814	20	2,157	0	24	0	0	1,044	1,137	2,181
25-29	27	57	105	261	12	462	3	33	0	0	268	230	498
30 and Over	26	51	119	314	48	558	21	62	0	0	310	331	641
Gender													
Male	410	414	466	691	63	2,044	2	62	0	0	2,108	0	2,108
Female	504	461	522	700	69	2,256	22	57	0	0	0	2,335	2,335
Headcount History													
2014	990	1,014	981	1,296	167	4,448	13	123	0	0	2,199	2,385	4,584
2013	1,211	1,013	857	1,283	125	4,489	1	127	0	0	2,240	2,377	4,617
2012	1,175	954	865	1,323	284	4,601	46	122	0	0	2,283	2,486	4,769
2011	1,242	999	969	1,298	258	4,766	7	114	0	0	2,327	2,560	4,887
2010	1,345	1,078	931	1,395	266	5,015	19	126	0	0	2,415	2,745	5,160

**The University of Wisconsin System
UW-Platteville Fall 2015**

	Fresh.	Soph.	Junior	Senior	UG Spec.	UG Total	GR Spec.	Masters	Doctorate-Rsrch/ Schlrshp	Doctorate-Prof. Practice	Male	Female	Total
Total Headcount	2,245	1,610	1,673	2,240	215	7,983	124	843	0	0	5,739	3,211	8,950
Full-Time Equiv. (FTE)	2,243	1,573	1,598	1,996	81	7,491	28	334	0	0	5,072	2,781	7,853
Entrance Status													
New	1,590	26	5	0	102	1,723	34	158	0	0	1,263	652	1,915
Continuing	541	1,376	1,481	2,150	106	5,654	89	683	0	0	4,088	2,338	6,426
Re-entry	19	23	27	42	7	118	1	2	0	0	79	42	121
Transfer	95	185	160	48	0	488	0	0	0	0	309	179	488
Resident Status													
Resident	1,659	1,188	1,231	1,710	164	5,952	82	416	0	0	4,125	2,325	6,450
Non-Resident	540	399	418	488	51	1,896	42	427	0	0	1,522	843	2,365
Reciprocity	46	23	24	42	0	135	0	0	0	0	92	43	135
Race/Ethnicity													
African American	46	21	28	21	16	132	8	64	0	0	114	90	204
Hispanic/Latino	84	47	53	56	5	245	3	26	0	0	169	105	274
American Indian	4	2	4	4	0	14	1	3	0	0	5	13	18
SE Asian American	14	11	7	19	0	51	0	4	0	0	43	12	55
Other Asian American	16	16	14	11	1	58	2	13	0	0	46	27	73
Hawaiian/Pacific Islander	1	1	2	3	0	7	0	4	0	0	6	5	11
Two or More Races	41	34	21	34	2	132	3	13	0	0	77	71	148
International	48	29	16	15	40	148	9	91	0	0	155	93	248
White/Unknown	1,991	1,449	1,528	2,077	151	7,196	98	625	0	0	5,124	2,795	7,919
Full-Time/Part-Time Status													
Part-Time	55	103	184	376	174	892	123	757	0	0	1,033	739	1,772
Full-Time	2,190	1,507	1,489	1,864	41	7,091	1	86	0	0	4,706	2,472	7,178
Age Range													
19 and Under	2,010	669	53	4	19	2,755	0	0	0	0	1,812	943	2,755
20-24	199	840	1,479	1,883	68	4,469	3	72	0	0	3,002	1,542	4,544
25-29	13	43	57	190	23	326	21	190	0	0	321	216	537
30 and Over	23	58	84	163	105	433	100	581	0	0	604	510	1,114
Gender													
Male	1,514	1,064	1,065	1,505	71	5,219	48	472	0	0	5,739	0	5,739
Female	731	546	608	735	144	2,764	76	371	0	0	0	3,211	3,211
Headcount History													
2014	2,385	1,666	1,601	2,221	174	8,047	93	761	0	0	5,696	3,205	8,901
2013	2,335	1,626	1,676	2,091	139	7,867	108	742	0	0	5,587	3,130	8,717
2012	2,441	1,636	1,573	2,066	124	7,840	152	686	0	0	5,524	3,154	8,678
2011	2,404	1,495	1,532	1,917	112	7,460	1	801	0	0	5,240	3,022	8,262
2010	2,361	1,497	1,358	1,887	129	7,232	33	663	0	0	5,027	2,901	7,928

**The University of Wisconsin System
UW-River Falls Fall 2015**

	Fresh.	Soph.	Junior	Senior	UG Spec.	UG Total	GR Spec.	Masters	Doctorate-Rsrch/ Schlrshp	Doctorate-Prof. Practice	Male	Female	Total
Total Headcount	1,437	1,091	1,219	1,531	229	5,507	20	431	0	0	2,298	3,660	5,958
Full-Time Equiv. (FTE)	1,343	1,051	1,140	1,335	139	5,008	5	249	0	0	2,019	3,244	5,263
Entrance Status													
New	1,033	29	4	0	109	1,175	15	94	0	0	470	814	1,284
Continuing	263	875	1,046	1,472	109	3,765	5	331	0	0	1,574	2,527	4,101
Re-entry	24	20	21	37	11	113	0	6	0	0	57	62	119
Transfer	117	167	148	22	0	454	0	0	0	0	197	257	454
Resident Status													
Resident	727	523	567	709	106	2,632	13	194	0	0	1,080	1,759	2,839
Non-Resident	67	41	60	67	92	327	0	52	0	0	175	204	379
Reciprocity	643	527	592	755	31	2,548	7	185	0	0	1,043	1,697	2,740
Race/Ethnicity													
African American	41	24	15	20	1	101	0	18	0	0	70	49	119
Hispanic/Latino	46	28	30	29	4	137	0	7	0	0	63	81	144
American Indian	3	1	2	4	1	11	0	0	0	0	3	8	11
SE Asian American	37	19	21	24	0	101	0	10	0	0	49	62	111
Other Asian American	12	10	8	10	4	44	1	7	0	0	23	29	52
Hawaiian/Pacific Islander	0	2	0	0	0	2	0	0	0	0	1	1	2
Two or More Races	53	28	23	21	3	128	0	8	0	0	55	81	136
International	21	10	15	28	77	151	0	8	0	0	67	92	159
White/Unknown	1,224	969	1,105	1,395	139	4,832	19	373	0	0	1,967	3,257	5,224
Full-Time/Part-Time Status													
Part-Time	55	51	118	250	116	590	20	286	0	0	337	559	896
Full-Time	1,382	1,040	1,101	1,281	113	4,917	0	145	0	0	1,961	3,101	5,062
Age Range													
19 and Under	1,253	483	42	3	56	1,837	0	0	0	0	659	1,178	1,837
20-24	138	548	1,024	1,252	95	3,057	3	99	0	0	1,229	1,930	3,159
25-29	18	25	73	166	30	312	3	132	0	0	226	221	447
30 and Over	28	35	80	110	48	301	14	200	0	0	184	331	515
Gender													
Male	584	436	489	567	87	2,163	3	132	0	0	2,298	0	2,298
Female	853	655	730	964	142	3,344	17	299	0	0	0	3,660	3,660
Headcount History													
2014	1,410	1,165	1,225	1,551	370	5,721	39	424	0	0	2,393	3,791	6,184
2013	1,443	1,225	1,197	1,627	295	5,787	11	373	0	0	2,411	3,760	6,171
2012	1,585	1,203	1,292	1,779	187	6,046	32	369	0	0	2,510	3,937	6,447
2011	1,684	1,338	1,342	1,792	168	6,324	30	434	0	0	2,723	4,065	6,788
2010	1,775	1,401	1,258	1,725	214	6,373	42	487	0	0	2,777	4,125	6,902

**The University of Wisconsin System
UW-Stevens Point Fall 2015**

	Fresh.	Soph.	Junior	Senior	UG Spec.	UG Total	GR Spec.	Masters	Doctorate-Rsrch/ Schlrshp	Doctorate-Prof. Practice	Male	Female	Total
Total Headcount	2,451	1,704	1,785	2,756	161	8,857	189	188	0	21	4,322	4,933	9,255
Full-Time Equiv. (FTE)	2,302	1,620	1,666	2,477	44	8,109	42	125	0	16	3,906	4,386	8,292
Entrance Status													
New	1,766	24	2	0	97	1,889	79	73	0	0	939	1,107	2,041
Continuing	463	1,404	1,569	2,659	39	6,134	47	113	0	0	2,949	3,361	6,294
Re-entry	20	22	37	49	25	153	63	2	0	0	104	114	218
Transfer	202	254	177	48	0	681	0	0	0	0	330	351	681
Resident Status													
Resident	2,092	1,503	1,570	2,406	150	7,721	181	138	0	11	3,676	4,375	8,051
Non-Resident	290	138	139	223	10	800	6	37	0	6	468	381	849
Reciprocity	69	63	76	127	1	336	2	13	0	4	178	177	355
Race/Ethnicity													
African American	119	41	31	21	4	216	2	4	0	0	132	90	222
Hispanic/Latino	134	51	55	82	6	328	3	2	0	1	137	197	334
American Indian	17	6	7	15	2	47	1	0	0	0	26	22	48
SE Asian American	46	35	42	46	5	174	2	1	0	0	82	95	177
Other Asian American	21	22	15	20	1	79	2	2	0	0	43	40	83
Hawaiian/Pacific Islander	1	1	1	3	0	6	0	0	0	0	1	5	6
Two or More Races	77	30	33	49	3	192	0	0	0	0	86	106	192
International	47	25	26	36	2	136	2	4	0	0	69	73	142
White/Unknown	1,989	1,493	1,575	2,484	138	7,679	177	175	0	20	3,746	4,305	8,051
Full-Time/Part-Time Status													
Part-Time	79	78	119	293	153	722	188	101	0	6	396	621	1,017
Full-Time	2,372	1,626	1,666	2,463	8	8,135	1	87	0	15	3,926	4,312	8,238
Age Range													
19 and Under	2,124	761	47	4	55	2,991	0	0	0	0	1,413	1,578	2,991
20-24	272	861	1,567	2,256	33	4,989	19	75	0	9	2,380	2,712	5,092
25-29	27	44	99	303	12	485	29	43	0	11	316	252	568
30 and Over	28	38	72	193	61	392	141	70	0	1	213	391	604
Gender													
Male	1,248	818	832	1,272	62	4,232	37	49	0	4	4,322	0	4,322
Female	1,203	886	953	1,484	99	4,625	152	139	0	17	0	4,933	4,933
Headcount History													
2014	2,296	1,769	1,923	2,867	143	8,998	102	202	0	20	4,350	4,972	9,322
2013	2,314	1,785	1,996	3,018	179	9,292	104	228	0	19	4,542	5,101	9,643
2012	2,286	1,908	2,014	2,910	178	9,296	139	226	0	16	4,545	5,132	9,677
2011	2,302	1,928	1,901	2,825	129	9,085	123	254	0	15	4,385	5,092	9,477
2010	2,433	1,874	1,886	2,733	136	9,062	174	249	0	15	4,419	5,081	9,500

**The University of Wisconsin System
UW-Stout Fall 2015**

	Fresh.	Soph.	Junior	Senior	UG Spec.	UG Total	GR Spec.	Masters	Doctorate-Rsrch/ Schlrshp	Doctorate-Prof. Practice	Male	Female	Total
Total Headcount	2,160	1,659	1,713	2,662	194	8,388	335	770	0	42	4,957	4,578	9,535
Full-Time Equiv. (FTE)	2,044	1,535	1,488	1,997	101	7,165	111	443	0	20	4,054	3,685	7,739
Entrance Status													
New	1,540	35	0	0	99	1,674	160	291	0	0	1,057	1,084	2,125
Continuing	451	1,370	1,434	2,489	90	5,834	175	479	0	0	3,400	3,114	6,488
Re-entry	17	23	26	32	5	103	0	0	0	0	61	42	103
Transfer	152	231	253	141	0	777	0	0	0	0	439	338	777
Resident Status													
Resident	1,303	1,084	1,133	1,831	106	5,457	175	471	0	33	3,266	2,870	6,136
Non-Resident	146	95	118	208	78	645	157	208	0	9	588	431	1,019
Reciprocity	711	480	462	623	10	2,286	3	91	0	0	1,103	1,277	2,380
Race/Ethnicity													
African American	48	25	28	27	2	130	11	21	0	1	104	59	163
Hispanic/Latino	66	41	41	54	2	204	6	23	0	0	124	109	233
American Indian	4	4	4	9	0	21	0	1	0	0	10	12	22
SE Asian American	78	38	51	65	0	232	0	17	0	0	143	106	249
Other Asian American	21	10	9	20	4	64	7	15	0	0	33	53	86
Hawaiian/Pacific Islander	0	4	5	1	0	10	0	1	0	0	7	4	11
Two or More Races	59	34	20	36	0	149	0	7	0	1	88	69	157
International	58	30	42	89	72	291	1	60	0	0	256	96	352
White/Unknown	1,826	1,473	1,513	2,361	114	7,287	310	625	0	40	4,192	4,070	8,262
Full-Time/Part-Time Status													
Part-Time	69	106	277	964	131	1,547	324	494	0	42	1,177	1,230	2,407
Full-Time	2,091	1,553	1,436	1,698	63	6,841	11	276	0	0	3,780	3,348	7,128
Age Range													
19 and Under	1,864	621	35	1	24	2,545	0	0	0	0	1,292	1,253	2,545
20-24	253	948	1,405	1,762	73	4,441	8	183	0	0	2,463	2,169	4,632
25-29	24	49	99	376	37	585	39	211	0	1	479	357	836
30 and Over	19	41	174	523	60	817	288	376	0	41	723	799	1,522
Gender													
Male	1,207	908	911	1,447	81	4,554	56	323	0	24	4,957	0	4,957
Female	953	751	802	1,215	113	3,834	279	447	0	18	0	4,578	4,578
Headcount History													
2014	2,137	1,512	1,658	2,755	192	8,254	346	745	0	26	4,768	4,603	9,371
2013	2,116	1,505	1,750	2,684	125	8,180	330	765	0	11	4,687	4,599	9,286
2012	2,127	1,480	1,662	2,798	203	8,270	333	644	0	0	4,592	4,655	9,247
2011	2,148	1,496	1,744	2,783	182	8,353	276	727	0	0	4,634	4,722	9,356
2010	2,218	1,534	1,677	2,755	117	8,301	307	731	0	0	4,652	4,687	9,339

**The University of Wisconsin System
UW-Superior Fall 2015**

	Fresh.	Soph.	Junior	Senior	UG Spec.	UG Total	GR Spec.	Masters	Doctorate-Rsrch/ Schlrshp	Doctorate-Prof. Practice	Male	Female	Total
Total Headcount	465	414	485	890	108	2,362	6	121	0	0	957	1,532	2,489
Full-Time Equiv. (FTE)	428	378	422	724	35	1,987	2	69	0	0	805	1,254	2,058
Entrance Status													
New	341	24	1	0	79	445	3	29	0	0	193	284	477
Continuing	77	299	370	823	20	1,589	3	88	0	0	623	1,057	1,680
Re-entry	8	13	13	23	9	66	0	4	0	0	35	35	70
Transfer	39	78	101	44	0	262	0	0	0	0	106	156	262
Resident Status													
Resident	188	198	230	453	84	1,153	4	51	0	0	414	794	1,208
Non-Resident	116	61	53	83	8	321	0	12	0	0	179	154	333
Reciprocity	161	155	202	354	16	888	2	58	0	0	364	584	948
Race/Ethnicity													
African American	11	9	12	17	4	53	0	2	0	0	27	28	55
Hispanic/Latino	13	13	9	15	2	52	0	3	0	0	25	30	55
American Indian	5	5	12	22	1	45	0	0	0	0	14	31	45
SE Asian American	2	2	3	0	0	7	0	0	0	0	0	7	7
Other Asian American	3	2	7	5	1	18	0	2	0	0	5	15	20
Hawaiian/Pacific Islander	1	2	0	0	0	3	0	0	0	0	1	2	3
Two or More Races	19	11	21	23	4	78	0	2	0	0	32	48	80
International	85	33	33	30	8	189	0	0	0	0	105	84	189
White/Unknown	326	337	388	778	88	1,917	6	112	0	0	748	1,287	2,035
Full-Time/Part-Time Status													
Part-Time	33	47	85	228	100	493	6	68	0	0	184	383	567
Full-Time	432	367	400	662	8	1,869	0	53	0	0	773	1,149	1,922
Age Range													
19 and Under	345	174	17	3	42	581	0	0	0	0	197	384	581
20-24	87	166	312	441	30	1,036	0	22	0	0	479	579	1,058
25-29	13	33	55	173	12	286	2	29	0	0	118	199	317
30 and Over	20	41	101	273	24	459	4	70	0	0	163	370	533
Gender													
Male	213	145	195	325	40	918	2	37	0	0	957	0	957
Female	252	269	290	565	68	1,444	4	84	0	0	0	1,532	1,532
Headcount History													
2014	453	438	530	918	116	2,455	5	129	0	0	1,010	1,579	2,589
2013	492	448	541	924	117	2,522	2	132	0	0	1,049	1,607	2,656
2012	543	435	541	941	90	2,550	10	140	0	0	1,124	1,576	2,700
2011	540	456	551	1,011	97	2,655	8	162	0	0	1,212	1,613	2,825
2010	614	485	559	908	65	2,631	30	195	0	0	1,195	1,661	2,856

**The University of Wisconsin System
UW-Whitewater Fall 2015**

	Fresh.	Soph.	Junior	Senior	UG Spec.	UG Total	GR Spec.	Masters	Doctorate-Rsrch/ Schlrshp	Doctorate-Prof. Practice	Male	Female	Total
Total Headcount	2,379	2,941	2,360	2,904	558	11,142	87	1,085	0	37	6,136	6,215	12,351
Full-Time Equiv. (FTE)	2,340	2,839	2,267	2,621	189	10,256	30	613	0	28	5,444	5,483	10,927
Entrance Status													
New	2,140	47	2	0	403	2,592	29	257	0	0	1,441	1,459	2,878
Continuing	142	2,491	2,056	2,830	108	7,627	53	812	0	0	4,222	4,285	8,492
Re-entry	9	20	23	27	47	126	5	16	0	0	85	62	147
Transfer	88	383	279	47	0	797	0	0	0	0	388	409	797
Resident Status													
Resident	1,964	2,454	1,972	2,466	505	9,361	81	895	0	14	5,154	5,197	10,351
Non-Resident	399	475	368	422	51	1,715	6	182	0	23	948	978	1,926
Reciprocity	16	12	20	16	2	66	0	8	0	0	34	40	74
Race/Ethnicity													
African American	89	138	110	126	9	472	4	61	0	9	298	248	546
Hispanic/Latino	176	175	117	130	38	636	0	26	0	0	303	359	662
American Indian	5	3	3	7	1	19	0	5	0	1	9	16	25
SE Asian American	20	23	18	24	2	87	0	10	0	0	49	48	97
Other Asian American	21	22	28	21	9	101	1	24	0	4	76	54	130
Hawaiian/Pacific Islander	1	2	1	1	0	5	0	3	0	0	6	2	8
Two or More Races	278	142	59	82	12	573	0	4	0	0	287	290	577
International	21	20	20	22	40	123	4	37	0	2	89	77	166
White/Unknown	1,768	2,416	2,004	2,491	447	9,126	78	915	0	21	5,019	5,121	10,140
Full-Time/Part-Time Status													
Part-Time	40	125	152	391	471	1,179	78	727	0	0	928	1,056	1,984
Full-Time	2,339	2,816	2,208	2,513	87	9,963	9	358	0	37	5,208	5,159	10,367
Age Range													
19 and Under	2,250	1,562	45	6	335	4,198	0	0	0	0	2,087	2,111	4,198
20-24	94	1,264	2,076	2,379	93	5,906	8	278	0	0	3,105	3,087	6,192
25-29	15	60	118	303	56	552	12	332	0	0	453	443	896
30 and Over	20	55	121	216	73	485	67	474	0	37	489	574	1,063
Unknown	0	0	0	0	1	1	0	1	0	0	2	0	2
Gender													
Male	1,260	1,534	1,171	1,389	234	5,588	20	508	0	20	6,136	0	6,136
Female	1,119	1,407	1,189	1,515	324	5,554	67	577	0	17	0	6,215	6,215
Headcount History													
2014	2,355	2,888	2,322	2,932	474	10,971	81	1,107	0	0	6,017	6,142	12,159
2013	2,357	2,798	2,328	2,930	439	10,852	82	1,081	0	0	5,874	6,141	12,015
2012	2,413	2,837	2,292	2,888	322	10,752	101	1,178	0	0	5,927	6,104	12,031
2011	2,256	2,724	2,248	2,734	266	10,228	101	1,314	0	0	5,770	5,873	11,643
2010	2,266	2,870	2,170	2,560	278	10,144	101	1,312	0	0	5,817	5,740	11,557

**The University of Wisconsin System
UW Colleges Fall 2015**

	Fresh.	Soph.	Junior	Senior	UG Spec.	UG Total	GR Spec.	Masters	Doctorate-Rsrch/ Schlrshp	Doctorate-Prof. Practice	Male	Female	Total
Total Headcount	7,227	3,551	126	54	2,594	13,552	0	0	0	0	6,322	7,230	13,552
Full-Time Equiv. (FTE)	5,660	2,220	47	18	758	8,703	0	0	0	0	4,228	4,474	8,703
Entrance Status													
New	3,760	13	3	0	1,791	5,567	0	0	0	0	2,486	3,081	5,567
Continuing	2,625	3,093	81	50	693	6,542	0	0	0	0	3,123	3,419	6,542
Re-entry	302	195	16	1	110	624	0	0	0	0	322	302	624
Transfer	540	250	26	3	0	819	0	0	0	0	391	428	819
Resident Status													
Resident	6,873	3,424	126	54	2,333	12,810	0	0	0	0	5,949	6,861	12,810
Non-Resident	288	85	0	0	216	589	0	0	0	0	311	278	589
Reciprocity	66	42	0	0	45	153	0	0	0	0	62	91	153
Race/Ethnicity													
African American	293	65	0	2	37	397	0	0	0	0	242	155	397
Hispanic/Latino	527	205	2	4	75	813	0	0	0	0	383	430	813
American Indian	50	19	0	0	8	77	0	0	0	0	42	35	77
SE Asian American	242	95	0	0	9	346	0	0	0	0	161	185	346
Other Asian American	81	33	0	0	72	186	0	0	0	0	92	94	186
Hawaiian/Pacific Islander	7	5	0	0	1	13	0	0	0	0	7	6	13
Two or More Races	187	82	5	0	32	306	0	0	0	0	146	160	306
International	45	7	0	0	8	60	0	0	0	0	38	22	60
White/Unknown	5,795	3,040	119	48	2,352	11,354	0	0	0	0	5,211	6,143	11,354
Full-Time/Part-Time Status													
Part-Time	2,211	2,024	112	49	2,522	6,918	0	0	0	0	2,975	3,943	6,918
Full-Time	5,016	1,527	14	5	72	6,634	0	0	0	0	3,347	3,287	6,634
Age Range													
19 and Under	4,853	642	0	0	1,505	7,000	0	0	0	0	3,116	3,884	7,000
20-24	1,600	1,850	51	18	380	3,899	0	0	0	0	1,979	1,920	3,899
25-29	366	457	19	11	177	1,030	0	0	0	0	530	500	1,030
30 and Over	408	602	56	25	531	1,622	0	0	0	0	697	925	1,622
Unknown	0	0	0	0	1	1	0	0	0	0	0	1	1
Gender													
Male	3,532	1,674	48	23	1,045	6,322	0	0	0	0	6,322	0	6,322
Female	3,695	1,877	78	31	1,549	7,230	0	0	0	0	0	7,230	7,230
Headcount History													
2014	7,718	3,736	74	15	2,629	14,172	0	0	0	0	6,627	7,545	14,172
2013	7,943	3,848	45	2	2,220	14,058	0	0	0	0	6,485	7,573	14,058
2012	8,136	3,933	0	0	2,038	14,107	0	0	0	0	6,533	7,574	14,107
2011	8,511	3,991	0	0	2,068	14,570	0	0	0	0	6,798	7,772	14,570
2010	8,570	3,777	0	0	2,038	14,385	0	0	0	0	6,824	7,561	14,385