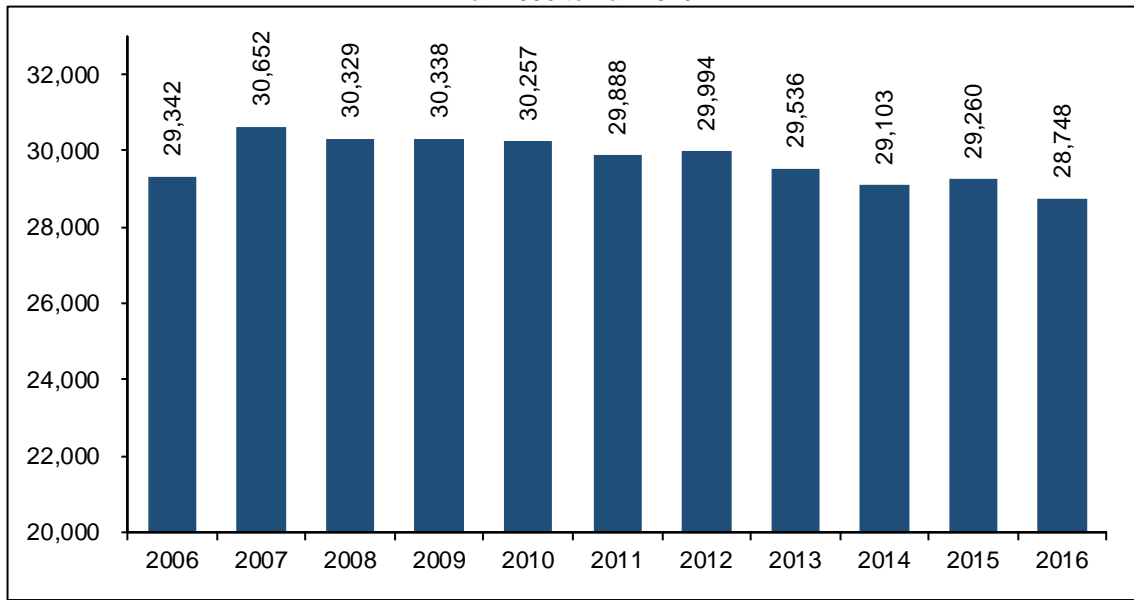




Informational Memorandum

The New Freshman Class: Fall 2016

**UW System New Freshman Headcount Enrollment
Fall 2006 to Fall 2016**



Highlights

Wisconsin resident new freshman applicants for Fall 2016:

- Admission rate 93%
- Yield rate 75%

Percentage of Fall 2016 UW System new freshmen who:

- are Wisconsin residents 74%
- are women 54%
- are underrepresented minority students 14%
- are first-generation college students 37%
- were 19 and under 97%
- were full-time students 97%
- scored above the national ACT average score of 21 68%
- were in the top quartile of their high school classes 43%
- enrolled with sophomore or higher class standing 8%
- required math remediation 17%
- required English remediation 6%

APPLICATION AND ADMISSION

In fall 2016, 71,048 individuals applied to UW institutions as new freshmen. Among these individuals, 61,896 applicants submitted the required documents and fee to complete an application and 50,134 were admitted to at least one UW institution. A total of 28,748 new freshmen enrolled in the UW System in fall 2016.

The total number of new freshman applicants with a completed application for fall 2016 has increased 16.3 percent (8,668 applicants) from fall 2006. The systemwide admission rate declined 5.8 percentage points from ten years ago while the number of admitted students increased 8.5 percent (3,930). The systemwide yield rate decreased 6.2 percentage points. See Appendix A for details.

Resident Status

The number of Wisconsin resident new freshman applicants decreased over the last few years while the number of non-resident applicants increased (Table 1). In fall 2016, 30,727 Wisconsin resident new freshman applicants completed an application, down from 33,616 in fall 2006. The number of non-resident applicants who completed an application was 23,719, nearly twice the number that applied for admission in fall 2006. As a result, the proportion of non-resident applicants increased while the proportion of Wisconsin resident applicants decreased. See Appendix A for details of UW System new freshman applicants, admissions, and enrollment by resident status over the last ten years.

The admission rates and yield rates for Wisconsin resident new freshman applicants were fairly stable over the last decade and remained the highest among all applicant groups. In fall 2016, Wisconsin resident new freshman applicants had an admission rate of 93.1 percent and a yield rate of 74.8 percent. Non-resident new freshman applicants had the lowest admission and yield rates among all applicant groups. See Appendix B for applications, admissions, and enrollment by resident status and UW institution in fall 2016.

Table 1
UW System New Freshman Applicants, Admissions, and Enrollment
by Resident Status

		# Applicants		Admitted		Enrolled	
		Total	Completed	#	%	#	%
Fall 2006	WI Resident	35,778	33,616	31,799	94.6%	23,976	75.4%
	Non-Resident	14,160	12,303	8,822	71.7%	2,567	29.1%
	Reciprocity	7,807	7,282	5,583	76.7%	2,799	50.1%
	Total	57,745	53,201	46,204	86.8%	29,342	63.5%
Fall 2011	WI Resident	37,015	33,363	31,084	93.2%	23,734	76.4%
	Non-Resident	21,826	15,711	10,882	69.3%	3,112	28.6%
	Reciprocity	8,519	7,245	6,061	83.7%	3,042	50.2%
	Total	67,360	56,319	48,027	85.3%	29,888	62.2%
Fall 2016	WI Resident	33,505	30,727	28,606	93.1%	21,396	74.8%
	Non-Resident	29,119	23,719	15,538	65.5%	4,312	27.8%
	Reciprocity	8,424	7,450	5,990	80.4%	3,040	50.8%
	Total	71,048	61,896	50,134	81.0%	28,748	57.3%

Note: Reciprocity includes Minnesota reciprocity students.
The admission rate is based on completed applications.

Gender

Female applicants comprised 52.9 percent (32,735) of the new freshman applicants with a completed application in fall 2016, while 47.1 percent (29,161) were male applicants (Table 2). In 2006, 2011, and 2016, female applicants maintained a higher admission rate while admitted males maintained a higher yield rate. The admission and yield rates for both males and females in fall 2016 declined from both ten and five years ago. See Appendix C for applications, admissions, and enrollment by gender and UW institution.

Table 2
UW System New Freshman Applicants, Admissions, and Enrollment
by Gender

		# Applicants		Admitted		Enrolled	
		Total	Completed	#	%	#	%
Fall 2006	Female	30,983	28,581	25,169	88.1%	15,727	62.5%
	Male	26,762	24,620	21,035	85.4%	13,615	64.7%
	Total	57,745	53,201	46,204	86.8%	29,342	63.5%
Fall 2011	Female	35,029	29,685	25,778	86.8%	15,863	61.5%
	Male	32,331	26,634	22,249	83.5%	14,025	63.0%
	Total	67,360	56,319	48,027	85.3%	29,888	62.2%
Fall 2016	Female	37,340	32,735	27,247	83.2%	15,380	56.4%
	Male	33,708	29,161	22,887	78.5%	13,368	58.4%
	Total	71,048	61,896	50,134	81.0%	28,748	57.3%

Underrepresented Minority (URM) Status

The proportion of underrepresented minority (URM) applicants with a completed application increased from 8.2 percent to 15.1 percent and the proportion of non-URM applicants with a completed application decreased from 88.9 percent to 75.7 percent from ten years ago (Table 3). The number of international applicants with a completed application, 5,661 for fall 2016, has more than tripled since fall 2006. Compared with non-URM applicants, URM applicants had lower completion, admission, and yield rates in fall 2011 and 2016. See Appendix D for applications, admissions, and enrollment by race/ethnicity and UW institution.

Table 3
UW System New Freshman Applicants, Admissions, and Enrollment
by Underrepresented Minority (URM) Status

		# Applicants		Admitted		Enrolled	
		Total	Completed	#	%	#	%
Fall 2006	URM	5,469	4,358	3,875	88.9%	2,342	60.4%
	Non-URM	50,239	47,274	41,245	87.2%	26,615	64.5%
	International	2,037	1,569	1,084	69.1%	385	35.5%
	Total	57,745	53,201	46,204	86.8%	29,342	63.5%
Fall 2011	URM	10,258	7,814	6,058	77.5%	3,621	59.8%
	Non-URM	51,396	45,156	40,170	89.0%	25,750	64.1%
	International	5,706	3,349	1,799	53.7%	517	28.7%
	Total	67,360	56,319	48,027	85.3%	29,888	62.2%
Fall 2016	URM	11,970	9,377	7,311	78.0%	3,938	53.9%
	Non-URM	51,701	46,858	39,948	85.3%	23,942	59.9%
	International	7,377	5,661	2,875	50.8%	868	30.2%
	Total	71,048	61,896	50,134	81.0%	28,748	57.3%

Note: Underrepresented minority (URM) students include those who indicated African American, American Indian, Hispanic/Latino(a), or Southeast Asian alone or in combination with other race/ethnicities.

ENROLLMENT

Headcount

In fall 2016, 28,748 new freshmen enrolled at a UW System institution, the lowest number of new freshman enrollments since fall 2004. This is a decrease of 1,140 students (3.8%) from fall 2011 and a decrease of 594 (2.0%) from ten years ago. Gains in enrollment, from fall 2011 to fall 2016, at Madison (602), Eau Claire (365), Whitewater (214), La Crosse (115), and Superior (24) were outweighed by enrollment declines at UW Colleges (1,238), Milwaukee (628), Oshkosh (371), Platteville (160), Parkside (100), Green Bay (38), Stevens Point (22) and River Falls (15).

UW-Madison, UW Colleges, and UW-Milwaukee enroll 44.3 percent of new freshman in the UW System, with over one in every five new freshman enrollments occurring at UW-Madison. In fall 2016, the new freshman proportion of total institutional headcount enrollment ranged from 10.8 percent at UW-Oshkosh to 26.6 percent at UW Colleges. See Appendix E for new freshman enrollment by UW institution from fall 1976 to fall 2016.

Table 4
UW System New Freshman Fall Headcount by Institution

	2006			2011			2016		
	#	% of UWS NF Enroll.	% of Inst. Enroll.	#	% of UWS NF Enroll.	% of Inst. Enroll.	#	% of UWS NF Enroll.	% of Inst. Enroll.
UW-Madison	5,643	19.2%	13.8%	5,828	19.5%	13.9%	6,430	22.4%	15.0%
UW-Milwaukee	4,090	13.9%	14.4%	3,746	12.5%	12.6%	3,118	10.8%	12.0%
UW-Eau Claire	2,026	6.9%	18.8%	1,953	6.5%	17.4%	2,318	8.1%	21.7%
UW-Green Bay	1,028	3.5%	18.1%	910	3.0%	13.7%	872	3.0%	12.4%
UW-La Crosse	1,752	6.0%	17.8%	1,978	6.6%	19.3%	2,093	7.3%	19.7%
UW-Oshkosh	1,765	6.0%	14.1%	1,872	6.3%	13.9%	1,501	5.2%	10.8%
UW-Parkside	907	3.1%	18.1%	766	2.6%	15.7%	666	2.3%	15.1%
UW-Platteville	1,439	4.9%	21.1%	1,721	5.8%	20.8%	1,561	5.4%	17.8%
UW-River Falls	1,296	4.4%	20.8%	1,234	4.1%	18.2%	1,219	4.2%	20.6%
UW-Stevens Point	1,650	5.6%	18.2%	1,613	5.4%	17.0%	1,591	5.5%	18.4%
UW-Stout	1,516	5.2%	18.1%	1,476	4.9%	15.8%	1,588	5.5%	16.5%
UW-Superior	312	1.1%	10.7%	352	1.2%	12.5%	376	1.3%	15.1%
UW-Whitewater	1,805	6.2%	17.2%	2,006	6.7%	17.2%	2,220	7.7%	17.6%
UW Colleges	4,113	14.0%	32.5%	4,433	14.8%	30.4%	3,195	11.1%	26.6%
Total	29,342	100%	17.3%	29,888	100%	16.5%	28,748	100%	16.4%

DEMOGRAPHICS

Resident Status

In fall 2016, 74.4 percent (21,396) of new freshmen were Wisconsin residents, 14.9 percent (4,295) were non-resident new freshmen, and the remaining 10.6 percent (3,057) were enrolled under the Minnesota or Michigan reciprocity agreements (Table 5). Non-resident students include those enrolled in special tuition programs. In fall 2016, 780 new freshman enrolled in the Midwest Student Exchange Program, 286 enrolled in UW-Platteville's Tri-State Initiative, 23 enrolled in the Return to Wisconsin program, and 25 enrolled in the Veterans Choice program. Combined, these programs accounted for 25.9 percent of non-resident new freshman enrollments in fall 2016.

Table 5
UW System New Freshmen by Resident Status and Institution
Fall 2016

	WI Resident		Non-Resident		Reciprocity		Total
	#	%	#	%	#	%	#
UW-Madison	3,670	57.1%	2,123	33.0%	637	9.9%	6,430
UW-Milwaukee	2,631	84.4%	424	13.6%	63	2.0%	3,118
UW-Eau Claire	1,590	68.6%	81	3.5%	647	27.9%	2,318
UW-Green Bay	782	89.7%	67	7.7%	23	2.6%	872
UW-La Crosse	1,686	80.6%	115	5.5%	292	14.0%	2,093
UW-Oshkosh	1,333	88.8%	158	10.5%	10	0.7%	1,501
UW-Parkside	567	85.1%	97	14.6%	2	0.3%	666
UW-Platteville	1,218	78.0%	320	20.5%	23	1.5%	1,561
UW-River Falls	561	46.0%	48	3.9%	610	50.0%	1,219
UW-Stevens Point	1,380	86.7%	162	10.2%	49	3.1%	1,591
UW-Stout	980	61.7%	97	6.1%	511	32.2%	1,588
UW-Superior	155	41.2%	65	17.3%	156	41.5%	376
UW-Whitewater	1,801	81.1%	406	18.3%	13	0.6%	2,220
UW Colleges	3,042	95.2%	132	4.1%	21	0.7%	3,195
Total	21,396	74.4%	4,295	14.9%	3,057	10.6%	28,748

Note: Reciprocity includes Minnesota or Michigan reciprocity students.

The proportion of non-resident new freshmen continues to increase and was 14.9 percent in fall 2016. Conversely, the proportion of Wisconsin resident new freshmen continues to decrease over the last ten years. The proportion of new freshmen who enrolled under the Minnesota or Michigan reciprocity agreements has remained fairly stable around 10 percent in the last decade and was 10.6 percent in fall 2016 (Table 6).

Table 6
UW System New Freshmen by Resident Status
Fall 2006 to Fall 2016

	WI Resident		Non-Resident		Reciprocity		Total
	#	%	#	%	#	%	#
2006	23,976	81.7%	2,532	8.6%	2,834	9.7%	29,342
2007	24,732	80.7%	3,039	9.9%	2,881	9.4%	30,652
2008	24,542	80.9%	2,842	9.4%	2,945	9.7%	30,329
2009	24,531	80.9%	2,816	9.3%	2,991	9.9%	30,338
2010	24,149	79.8%	3,104	10.3%	3,004	9.9%	30,257
2011	23,734	79.4%	3,073	10.3%	3,081	10.3%	29,888
2012	23,076	76.9%	3,821	12.7%	3,097	10.3%	29,994
2013	22,747	77.0%	3,809	12.9%	2,980	10.1%	29,536
2014	22,289	76.6%	3,891	13.4%	2,923	10.0%	29,103
2015	22,019	75.3%	4,247	14.5%	2,994	10.2%	29,260
2016	21,396	74.4%	4,295	14.9%	3,057	10.6%	28,748

Gender

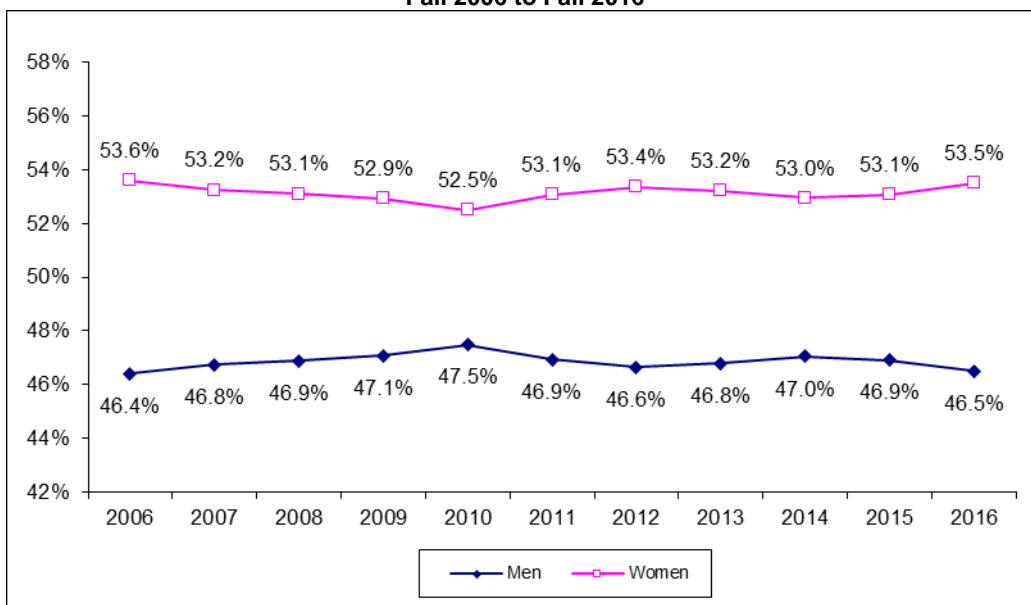
Female students comprised 53.5 percent of the new freshman class in fall 2016, while 46.5 percent were male students (Table 7). The percentage of female students ranged from 32.3 percent at UW-Platteville to 67.2 percent at UW-Green Bay.

**Table 7
UW System New Freshmen by Gender and Institution
Fall 2016**

	Female		Male		Total
	#	%	#	%	#
UW-Madison	3,385	52.6%	3,045	47.4%	6,430
UW-Milwaukee	1,708	54.8%	1,410	45.2%	3,118
UW-Eau Claire	1,516	65.4%	802	34.6%	2,318
UW-Green Bay	586	67.2%	286	32.8%	872
UW-La Crosse	1,227	58.6%	866	41.4%	2,093
UW-Oshkosh	902	60.1%	599	39.9%	1,501
UW-Parkside	363	54.5%	303	45.5%	666
UW-Platteville	504	32.3%	1,057	67.7%	1,561
UW-River Falls	772	63.3%	447	36.7%	1,219
UW-Stevens Point	843	53.0%	748	47.0%	1,591
UW-Stout	696	43.8%	892	56.2%	1,588
UW-Superior	200	53.2%	176	46.8%	376
UW-Whitewater	1,041	46.9%	1,179	53.1%	2,220
UW Colleges	1,637	51.2%	1,558	48.8%	3,195
Total	15,380	53.5%	13,368	46.5%	28,748

Figure 1 shows the trend in new freshman enrollment by gender from fall 2006 to fall 2016. The gender gap between female and male students declined from 2006 to 2010. The fall 2010 gender gap, 5.0 percentage points, was the smallest in the last decade. Female students have made up the majority of the UW System new freshman class since 1976.

**Figure 1
UW System New Freshmen by Gender
Fall 2006 to Fall 2016**



Race and Ethnicity

In fall 2016, underrepresented minority (URM) students made up 13.7 percent (3,983) of the new freshman class, while 83.3 percent (23,942) of the incoming class were non-URM students. International students comprised 3.0 percent of fall 2016 new freshmen (Table 8). The proportion of URM new freshmen ranged from 7.5 percent at UW-River Falls to 32.6 percent at UW-Parkside.

Table 8
UW System New Freshmen by Race/Ethnicity and Institution
Fall 2016

		MSN	MIL	EAU	GBY	LAC	OSH	PKS	PLT	RVF	STP	STO	SUP	WTW	UWC	Total
AA	#	135	202	18	18	20	55	70	16	22	54	43	5	92	107	857
	%	2.1%	6.5%	0.8%	2.1%	1.0%	3.7%	10.5%	1.0%	1.8%	3.4%	2.7%	1.3%	4.1%	3.3%	3.0%
HL	#	355	393	79	41	93	88	120	73	33	68	58	10	154	256	1,821
	%	5.5%	12.6%	3.4%	4.7%	4.4%	5.9%	18.0%	4.7%	2.7%	4.3%	3.7%	2.7%	6.9%	8.0%	6.3%
AI	#	11	10	5	7	1	5	1	2	1	5	4	3	2	12	69
	%	0.2%	0.3%	0.2%	0.8%	0.0%	0.3%	0.2%	0.1%	0.1%	0.3%	0.3%	0.8%	0.1%	0.4%	0.2%
SA	#	90	113	42	19	16	46	4	11	9	22	32	0	20	75	499
	%	1.4%	3.6%	1.8%	2.2%	0.8%	3.1%	0.6%	0.7%	0.7%	1.4%	2.0%	0.0%	0.9%	2.3%	1.7%
TMR-URM	#	127	142	41	20	52	48	22	33	27	28	31	16	45	60	692
	%	2.0%	4.6%	1.8%	2.3%	2.5%	3.2%	3.3%	2.1%	2.2%	1.8%	2.0%	4.3%	2.0%	1.9%	2.4%
URM	#	718	860	185	105	182	242	217	135	92	177	168	34	313	510	3,938
	%	11.2%	27.6%	8.0%	12.0%	8.7%	16.1%	32.6%	8.6%	7.5%	11.1%	10.6%	9.0%	14.1%	16.0%	13.7%
HPI	#	7	2	0	0	0	3	1	0	1	1	1	0	1	4	21
	%	0.1%	0.1%	0.0%	0.0%	0.0%	0.2%	0.2%	0.0%	0.1%	0.1%	0.1%	0.0%	0.0%	0.1%	0.1%
OA	#	311	82	28	9	24	14	18	10	9	8	13	1	24	26	577
	%	4.8%	2.6%	1.2%	1.0%	1.1%	0.9%	2.7%	0.6%	0.7%	0.5%	0.8%	0.3%	1.1%	0.8%	2.0%
TMR-Non-URM	#	134	42	24	6	28	8	2	8	8	8	15	1	20	20	324
	%	2.1%	1.3%	1.0%	0.7%	1.3%	0.5%	0.3%	0.5%	0.7%	0.5%	0.9%	0.3%	0.9%	0.6%	1.1%
White	#	4,694	2,070	2,072	736	1,842	1,223	421	1,389	1,094	1,370	1,380	290	1,838	2,570	22,989
	%	73.0%	66.4%	89.4%	84.4%	88.0%	81.5%	63.2%	89.0%	89.7%	86.1%	86.9%	77.1%	82.8%	80.4%	80.0%
UNK	#	12	0	0	1	3	5	0	0	3	0	3	0	1	3	31
	%	0.2%	0.0%	0.0%	0.1%	0.1%	0.3%	0.0%	0.0%	0.2%	0.0%	0.2%	0.0%	0.0%	0.1%	0.1%
INTL	#	554	62	9	15	14	6	7	19	12	27	8	50	23	62	868
	%	8.6%	2.0%	0.4%	1.7%	0.7%	0.4%	1.1%	1.2%	1.0%	1.7%	0.5%	13.3%	1.0%	1.9%	3.0%
Total	#	6,430	3,118	2,318	872	2,093	1,501	666	1,561	1,219	1,591	1,588	376	2,220	3,195	28,748
	%	100%	100%	100%	100%	100%	100%	100%	100%	100%	100%	100%	100%	100%	100%	100%

Note: Underrepresented minority (URM) students include those who indicated African American, American Indian, Hispanic/Latino(a), or Southeast Asian alone or in combination with other race/ethnicities.

AA (African American), HL (Hispanic/Latino(a)), AI (American Indian), SA (Southeast Asian), TMR-URM (Students identifying as two or more races, one of which is an underrepresented minority group), URM (Underrepresented Minority), HPI (Hawaiian/Pacific Islander), OA (Other Asian), TMR-Non-URM (Students identifying as two or more races, none of which is an underrepresented minority group), UNK (Students whose race/ethnicity is unknown), INTL (International Students).

The number and proportion of URM new freshmen were both slightly below the record high set in fall 2015. Among URM students, Hispanic/Latino(a) students were the largest group (1,821 or 6.3%), followed by African American students (857 or 3.0%). Hispanic/Latino(a) new-freshman enrollments have steadily increased since fall of 2006.

Fall 2008 brought two new classification changes; new freshmen were able to specify more than one race/ethnicity and Hawaiian/Pacific Islanders, previously classified under the Other Asian category, were given a separate race/ethnicity category.

**Table 9
UW System New Freshmen by Race/Ethnicity
Fall 2006 to Fall 2016**

		2006	2007	2008	2009	2010	2011	2012	2013	2014	2015	2016
AA	#	903	1,005	911	906	920	967	866	900	979	944	857
	%	3.1%	3.3%	3.0%	3.0%	3.0%	3.2%	2.9%	3.0%	3.4%	3.2%	3.0%
HL	#	712	839	916	1,042	1,175	1,324	1,391	1,483	1,663	1,756	1,821
	%	2.4%	2.7%	3.0%	3.4%	3.9%	4.4%	4.6%	5.0%	5.7%	6.0%	6.3%
AI	#	207	256	206	127	120	111	107	104	90	89	69
	%	0.7%	0.8%	0.7%	0.4%	0.4%	0.4%	0.4%	0.4%	0.3%	0.3%	0.2%
SA	#	520	566	600	637	696	695	667	664	626	583	499
	%	1.8%	1.8%	2.0%	2.1%	2.3%	2.3%	2.2%	2.2%	2.2%	2.0%	1.7%
TMR-URM	#			234	391	458	524	530	592	584	642	692
	%			0	0	1.5%	1.8%	1.8%	2.0%	2.0%	2.2%	2.4%
URM	#	2,342	2,666	2,867	3,103	3,369	3,621	3,561	3,743	3,942	4,014	3,938
	%	8.0%	8.7%	9.5%	10.2%	11.1%	12.1%	11.9%	12.7%	13.5%	13.7%	13.7%
HPI	#			42	31	38	22	30	32	21	21	21
	%			0.1%	0.1%	0.1%	0.1%	0.1%	0.1%	0.1%	0.1%	0.1%
OA	#	639	605	414	412	423	479	458	500	549	540	577
	%	2.2%	2.0%	1.4%	1.4%	1.4%	1.6%	1.5%	1.7%	1.9%	1.8%	2.0%
TMR-Non-URM	#			79	158	190	218	230	233	334	506	324
	%			0.3%	0.5%	0.6%	0.7%	0.8%	0.8%	1.1%	1.7%	1.1%
White	#	25,550	26,328	25,803	25,665	25,539	24,983	24,789	24,277	23,473	23,312	22,989
	%	87.1%	85.9%	85.1%	84.6%	84.4%	83.6%	82.6%	82.2%	80.7%	79.7%	80.0%
UNK	#	426	514	573	423	72	48	30	33	47	51	31
	%	1.5%	1.7%	1.9%	1.4%	0.2%	0.2%	0.1%	0.1%	0.2%	0.2%	0.1%
INTL	#	385	539	551	546	626	517	896	718	737	816	868
	%	1.3%	1.8%	1.8%	1.8%	2.1%	1.7%	3.0%	2.4%	2.5%	2.8%	3.0%
Total	#	29,342	30,652	30,329	30,338	30,257	29,888	29,994	29,536	29,103	29,260	28,748
	%	100%	100%	100%	100%	100%	100%	100%	100%	100%	100%	100%

Note: AA (African American), HL (Hispanic/Latino(a)), AI (American Indian), SA (Southeast Asian), TMR-URM (Students identifying as two or more races, one of which is an underrepresented minority group), URM (Underrepresented Minority), HPI (Hawaiian/Pacific Islander), OA (Other Asian), TMR-Non-URM (Students identifying as two or more races, none of which is an underrepresented minority group), UNK (Students whose race/ethnicity is unknown), INTL (International Students).

Fall 2008 brought two new classification changes; new freshmen were able to specify more than one race/ethnicity and Hawaiian/Pacific Islanders, previously classified under the Other Asian category, were given a separate race/ethnicity category.

First-Generation College Students

Students are identified as first-generation college students if neither parent earned a four-year college/university degree. In fall 2016, 36.7 percent (10,561) of new freshmen were first-generation college students (Table 10). UW Colleges (1,793), UW-Milwaukee (1,321), and UW-Madison (1,071) enrolled the largest number of first-generation new freshmen. UW Colleges had the highest proportion of first-generation college students (56.1%) in its new freshman class, followed by UW-Parkside (55.0%). Despite enrolling the third-highest number of first-generation new freshman, UW-Madison had the lowest proportion (16.7%).

Table 10
UW System First-Generation New Freshmen by Resident Status and Institution
Fall 2016

	WI Resident		Non-Resident		Reciprocity		Total	
	#	% of WI Res	#	% of Non-Res	#	% of Recip	#	%
UW-Madison	756	20.6%	258	12.2%	57	8.9%	1,071	16.7%
UW-Milwaukee	1,178	44.8%	127	30.0%	16	25.4%	1,321	42.4%
UW-Eau Claire	593	37.3%	25	30.9%	147	22.7%	765	33.0%
UW-Green Bay	379	48.5%	22	32.8%	10	43.5%	411	47.1%
UW-La Crosse	549	32.6%	19	16.5%	70	24.0%	638	30.5%
UW-Oshkosh	572	42.9%	68	43.0%	2	20.0%	642	42.8%
UW-Parkside	320	56.4%	46	47.4%	0	0.0%	366	55.0%
UW-Platteville	513	42.1%	119	37.2%	8	34.8%	640	41.0%
UW-River Falls	268	47.8%	11	22.9%	248	40.7%	527	43.2%
UW-Stevens Point	662	48.0%	57	35.2%	9	18.4%	728	45.8%
UW-Stout	412	42.0%	36	37.1%	160	31.3%	608	38.3%
UW-Superior	82	52.9%	7	10.8%	68	43.6%	157	41.8%
UW-Whitewater	768	42.6%	125	30.8%	1	7.7%	894	40.3%
UW Colleges	1,723	56.6%	52	39.4%	18	85.7%	1,793	56.1%
Total	8,775	41.0%	972	22.6%	814	26.6%	10,561	36.7%

The UW System began to collect first-generation information for new students who enrolled in fall 2009. The share of new freshmen who were first-generation college students was highest at 43.5 percent in 2010 and has since declined to 36.7 percent in fall 2016 (Table 11). While the proportion of Wisconsin residents who are first-generation students has steadily declined from the fall of 2010, it still remains the subgroup with the largest share of first-generation students. In fall 2016, first-generation new freshmen comprised 41.0 percent of all Wisconsin resident new freshmen. This proportion was 22.6 percent for non-residents and 26.6 percent for Minnesota or Michigan reciprocity students.

Table 11
UW System First-Generation New Freshmen by Resident Status and Institution
Fall 2009 to Fall 2016

	WI Resident		Non-Resident		Reciprocity		Total	
	#	% of WI Res	#	% of Non-Res	#	% of Recip	#	%
2009	11,587	47.2%	545	19.4%	873	29.2%	13,005	42.9%
2010	11,642	48.2%	602	19.4%	904	30.1%	13,148	43.5%
2011	11,336	47.8%	677	22.0%	948	30.8%	12,961	43.4%
2012	10,472	45.4%	777	20.3%	898	29.0%	12,147	40.5%
2013	10,233	45.0%	826	21.7%	849	28.5%	11,908	40.3%
2014	9,884	44.3%	905	23.3%	797	27.3%	11,586	39.8%
2015	9,322	42.3%	911	21.5%	805	26.9%	11,038	37.7%
2016	8,775	41.0%	972	22.6%	814	26.6%	10,561	36.7%

Age

UW System new freshmen age 19 and under made up the majority of new freshmen at 97.1 percent. The percentage of new freshmen age 20 and over was 2.9 percent (824 enrollments) for the UW System as a whole and ranged from 0.5 percent (34 enrollments) at UW-Madison to 8.9 percent (284 enrollments) at UW Colleges (Table 12). UW Colleges represented over one-third (284 enrollments or 34.5%) of UW system's 824 new-freshman enrollments aged 20 and up.

Table 12
UW System New Freshmen by Age Group and Institution
Fall 2016

	19 and Under		20 to 24		25 to 34		35 and Over		Total
	#	%	#	%	#	%	#	%	#
UW-Madison	6,396	99.5%	32	0.5%	2	0.0%	0	0.0%	6,430
UW-Milwaukee	2,996	96.1%	101	3.2%	17	0.5%	4	0.1%	3,118
UW-Eau Claire	2,291	98.8%	23	1.0%	3	0.1%	1	0.0%	2,318
UW-Green Bay	847	97.1%	20	2.3%	2	0.2%	3	0.3%	872
UW-La Crosse	2,080	99.4%	12	0.6%	0	0.0%	1	0.0%	2,093
UW-Oshkosh	1,465	97.6%	27	1.8%	6	0.4%	3	0.2%	1,501
UW-Parkside	624	93.7%	29	4.4%	7	1.1%	6	0.9%	666
UW-Platteville	1,524	97.6%	25	1.6%	9	0.6%	3	0.2%	1,561
UW-River Falls	1,189	97.5%	26	2.1%	2	0.2%	2	0.2%	1,219
UW-Stevens Point	1,540	96.8%	42	2.6%	8	0.5%	1	0.1%	1,591
UW-Stout	1,536	96.7%	46	2.9%	3	0.2%	3	0.2%	1,588
UW-Superior	348	92.6%	26	6.9%	1	0.3%	1	0.3%	376
UW-Whitewater	2,177	98.1%	31	1.4%	11	0.5%	1	0.0%	2,220
UW Colleges	2,911	91.1%	203	6.4%	55	1.7%	26	0.8%	3,195
Total	27,924	97.1%	643	2.2%	126	0.4%	55	0.2%	28,748

The proportion of UW System new freshmen aged 19 and under grew 0.6% percentage points to 97.1 percent in fall of 2016 to become the largest value for this share in the past ten years. The share of enrollments for new freshman aged 20 to 24, 25 to 34, and 35 and over each reached their respective decade low in fall 2016 (Table 13).

Table 13
UW System New Freshmen by Age Group
Fall 2006 to Fall 2016

	19 and Under		20 to 24		25 to 34		35 and Over		Total
	#	%	#	%	#	%	#	%	#
2006	28,002	95.4%	886	3.0%	302	1.0%	152	0.5%	29,342
2007	29,196	95.2%	914	3.0%	373	1.2%	169	0.6%	30,652
2008	29,015	95.7%	808	2.7%	361	1.2%	145	0.5%	30,329
2009	28,846	95.1%	902	3.0%	402	1.3%	188	0.6%	30,338
2010	28,641	94.7%	1,026	3.4%	424	1.4%	166	0.5%	30,257
2011	28,390	95.0%	906	3.0%	401	1.3%	191	0.6%	29,888
2012	28,556	95.2%	903	3.0%	357	1.2%	178	0.6%	29,994
2013	28,344	96.0%	803	2.7%	270	0.9%	119	0.4%	29,536
2014	27,895	95.8%	884	3.0%	245	0.8%	79	0.3%	29,103
2015	28,224	96.5%	801	2.7%	175	0.6%	60	0.2%	29,260
2016	27,924	97.1%	643	2.2%	126	0.4%	55	0.2%	28,748

Full-Time Status

The vast majority of UW new freshmen in fall 2016 (96.6%) were full-time students with a credit load of 12 or more credits (Table 14). UW Colleges had the highest proportion of part-time new freshmen (19.5%) and these 624 new-freshman enrollments account for 63.5 percent of the system's part-time new freshman enrollments.

Table 14
UW System New Freshmen by Full-Time/Part-Time Status and Institution
Fall 2016

	Full-Time		Part-Time		Total
	#	%	#	%	#
UW-Madison	6,414	99.8%	16	0.2%	6,430
UW-Milwaukee	3,079	98.7%	39	1.3%	3,118
UW-Eau Claire	2,304	99.4%	14	0.6%	2,318
UW-Green Bay	824	94.5%	48	5.5%	872
UW-La Crosse	2,089	99.8%	4	0.2%	2,093
UW-Oshkosh	1,487	99.1%	14	0.9%	1,501
UW-Parkside	634	95.2%	32	4.8%	666
UW-Platteville	1,549	99.2%	12	0.8%	1,561
UW-River Falls	1,112	91.2%	107	8.8%	1,219
UW-Stevens Point	1,571	98.7%	20	1.3%	1,591
UW-Stout	1,562	98.4%	26	1.6%	1,588
UW-Superior	371	98.7%	5	1.3%	376
UW-Whitewater	2,199	99.1%	21	0.9%	2,220
UW Colleges	2,571	80.5%	624	19.5%	3,195
Total	27,766	96.6%	982	3.4%	28,748

The percentage of UW System full-time new freshmen remained steady over the past ten years (Table 15). The proportion of full-time new freshmen in fall 2009, 97.2 percent, was the highest in the past ten years, while the lowest proportion of this group for the past ten years was 96.5 percent in 2011.

Table 15
UW System New Freshmen by Full-Time/Part-Time Status
Fall 2006 to Fall 2016

	Full-Time		Part-Time		Total
	#	%	#	%	#
2006	28,401	96.8%	941	3.2%	29,342
2007	29,641	96.7%	1,011	3.3%	30,652
2008	29,371	96.8%	958	3.2%	30,329
2009	29,479	97.2%	859	2.8%	30,338
2010	29,259	96.7%	998	3.3%	30,257
2011	28,854	96.5%	1,034	3.5%	29,888
2012	28,989	96.6%	1,005	3.4%	29,994
2013	28,656	97.0%	880	3.0%	29,536
2014	28,177	96.8%	926	3.2%	29,103
2015	28,315	96.8%	945	3.2%	29,260
2016	27,766	96.6%	982	3.4%	28,748

EDUCATIONAL PREPARATION

ACT Scores

Table 16 shows the average ACT composite scores for new freshmen by UW institution from fall 2006 to fall 2016. The average ACT composite score of fall 2016 new freshmen ranged from 28.7 at UW-Madison to 20.4 at UW Colleges. Of the 1,602 (5.6%) UW System new freshmen who did not provide an ACT score, 983 (3.4%) instead provided SAT scores. Some students (326 or 1.1% of new freshman enrollments) provided both ACT and SAT scores.

The UW System new freshman average ACT composite score of 23.8 is 3.0 test points higher than the national average of 20.8. Since 2006 the average ACT composite score of UW System new freshmen has ranged from 2.0 to 3.0 test points above the national average. In fall 2016, 67.5 percent of UW System new freshmen scored above the national average.

Table 16
UW System New Freshman Average ACT Composite Score by Institution
and National Average ACT Composite Score
Fall 2006 to Fall 2016

	2006	2007	2008	2009	2010	2011	2012	2013	2014	2015	2016
UW-Madison	27.5	27.9	28.1	28.2	28.3	28.3	28.3	28.1	28.5	28.7	28.7
UW-Milwaukee	22.0	22.0	22.1	21.9	21.9	21.9	22.1	21.9	21.9	22.2	22.3
UW-Eau Claire	24.3	24.5	24.6	24.5	24.4	24.3	24.3	24.1	24.0	24.0	23.9
UW-Green Bay	22.6	22.5	22.5	22.4	22.9	22.9	22.6	22.9	22.7	23.1	22.6
UW-La Crosse	24.6	24.7	24.9	24.9	24.7	24.7	24.7	24.6	24.7	24.7	24.7
UW-Oshkosh	22.2	22.5	22.4	22.2	22.4	22.4	22.3	22.5	22.3	22.2	22.3
UW-Parkside	19.8	20.2	20.1	20.5	20.8	20.8	21.3	21.1	21.2	20.8	20.9
UW-Platteville	22.1	22.2	22.3	22.5	22.8	22.8	22.8	23.2	23.4	23.3	23.3
UW-River Falls	21.8	21.9	22.2	22.0	22.3	22.3	22.5	22.4	22.6	22.4	22.6
UW-Stevens Point	22.7	22.8	23.0	23.2	23.3	23.3	23.3	22.8	22.8	22.4	22.5
UW-Stout	21.2	21.4	21.2	21.6	21.8	21.8	22.1	22.1	22.4	22.2	22.2
UW-Superior	22.0	22.0	21.8	22.0	22.0	22.1	21.6	22.0	21.5	21.3	21.8
UW-Whitewater	22.2	22.2	22.0	22.4	22.3	22.3	22.1	22.2	22.5	22.6	22.4
UW Colleges	20.4	20.4	20.5	20.5	20.5	20.5	20.6	20.7	20.5	20.6	20.4
UW System	23.1	23.2	23.3	23.3	23.5	23.5	23.6	23.6	23.7	23.7	23.8
National Average	21.1	21.2	21.1	21.1	21.0	21.1	21.1	20.9	21.0	21.0	20.8

Note: Excludes students who did not provide an ACT score.

High School Rank

In fall 2016, 42.7 percent of UW System new freshmen graduated from high school in the top 25 percent of their high school class (Table 17). Over three-fourths (76.9%) of new freshmen graduated in the top half of their high school class. See Appendix F for new freshman average high school percentile rank by UW institution from fall 1976 to fall 2016.

Table 17
UW System New Freshmen by High School Rank and Institution
Fall 2016

	Top Quartile		2nd Quartile		Top Half		3rd Quartile		Bottom Quartile	
	#	%	#	%	#	%	#	%	#	%
UW-Madison	2,667	88.5%	333	11.0%	3,000	99.5%	13	0.4%	2	0.1%
UW-Milwaukee	539	27.8%	760	39.2%	1,299	66.9%	543	28.0%	99	5.1%
UW-Eau Claire	787	46.7%	719	42.7%	1,506	89.4%	178	10.6%	1	0.1%
UW-La Crosse	876	58.4%	548	36.5%	1,424	94.9%	76	5.1%	1	0.1%
UW-Oshkosh	401	34.4%	472	40.4%	873	74.8%	280	24.0%	14	1.2%
UW-Parkside	170	33.8%	195	38.8%	365	72.6%	109	21.7%	29	5.8%
UW-Platteville	436	38.4%	417	36.8%	853	75.2%	229	20.2%	52	4.6%
UW-River Falls	329	36.4%	333	36.9%	662	73.3%	214	23.7%	27	3.0%
UW-Stevens Point	391	36.8%	382	36.0%	773	72.8%	245	23.1%	44	4.1%
UW-Stout	321	28.2%	405	35.6%	726	63.8%	338	29.7%	74	6.5%
UW-Superior	54	23.5%	81	35.2%	135	58.7%	69	30.0%	26	11.3%
UW-Whitewater	452	29.1%	697	44.9%	1,149	74.0%	340	21.9%	63	4.1%
UW Colleges	381	18.0%	661	31.1%	1,042	49.1%	682	32.1%	398	18.8%
Total	7,804	43.5%	6,003	33.4%	13,807	76.9%	3,316	18.5%	830	4.6%

Note: Excludes students for whom a high school rank was not provided. High school rank information is not shown for UW-Green Bay since it does not collect high school rank from applicants.

The percentage of UW System new freshmen graduating in the top 25 percent of their high school class increased to 43.5 percent in fall 2016 from a decade-low of 42.2 percent in fall 2015 (Table 18). For UW institutions that collect high school rank, the proportion of new freshmen for whom a high school rank was not provided increased from 17.3 percent in fall 2006 to 37.6 percent in fall 2016.

Table 18
UW System New Freshmen by High School Rank
Fall 2006 to Fall 2016

	Top Quartile		2nd Quartile		Top Half		3rd Quartile		Bottom Quartile		Total
	#	%	#	%	#	%	#	%	#	%	#
2006	10,942	45.1%	8,156	33.6%	19,098	78.7%	4,191	17.3%	985	4.1%	24,274
2007	11,125	44.5%	8,294	33.2%	19,419	77.7%	4,358	17.4%	1,205	4.8%	24,982
2008	10,873	44.4%	8,218	33.6%	19,091	78.0%	4,308	17.6%	1,088	4.4%	24,487
2009	10,707	44.3%	8,146	33.7%	18,853	78.0%	4,188	17.3%	1,116	4.6%	24,157
2010	10,354	44.1%	7,783	33.2%	18,137	77.3%	4,193	17.9%	1,138	4.8%	23,468
2011	9,895	44.8%	7,311	33.1%	17,206	78.0%	3,814	17.3%	1,044	4.7%	22,064
2012	9,490	45.4%	6,778	32.4%	16,268	77.9%	3,713	17.8%	910	4.4%	20,891
2013	8,531	43.9%	6,393	32.9%	14,924	76.8%	3,606	18.6%	909	4.7%	19,439
2014	8,475	42.9%	6,569	33.2%	15,044	76.1%	3,731	18.9%	993	5.0%	19,768
2015	7,979	42.2%	6,273	33.2%	14,252	75.5%	3,675	19.5%	960	5.1%	18,887
2016	7,804	43.5%	6,003	33.4%	13,807	76.9%	3,316	18.5%	830	4.6%	17,953

Note: Excludes students for whom a high school rank was not provided.

Class Standing

Many new freshmen enter a UW institution with Advanced Placement credits, with credits earned through the institution's placement testing process, or with college credits they earned while in high school. Some new freshmen have sufficient credits from these sources to qualify for sophomore or higher class standing. In fall 2016, the majority of UW System new freshmen (92.2%) enrolled with a class standing of freshman, while 7.8 percent entered with a sophomore or higher class standing (Table 19). UW-Madison had the largest proportion of new freshmen who entered with a sophomore or higher class standing (25.6%), accounting for 73.8 percent of the UW system total. Other institutions share of new freshman with sophomore or higher class standing ranged from 0.7 percent at UW Colleges to 6.4 percent at UW Superior.

Table 19
UW System New Freshmen by Class Standing and Institution
Fall 2016

	Freshman Standing		Sophomore or Higher Class Standing		Total
	#	%	#	%	#
UW-Madison	4,781	74.4%	1,649	25.6%	6,430
UW-Milwaukee	3,047	97.7%	71	2.3%	3,118
UW-Eau Claire	2,229	96.2%	89	3.8%	2,318
UW-Green Bay	832	95.4%	40	4.6%	872
UW-La Crosse	2,017	96.4%	76	3.6%	2,093
UW-Oshkosh	1,467	97.7%	34	2.3%	1,501
UW-Parkside	648	97.3%	18	2.7%	666
UW-Platteville	1,513	96.9%	48	3.1%	1,561
UW-River Falls	1,166	95.7%	53	4.3%	1,219
UW-Stevens Point	1,565	98.4%	26	1.6%	1,591
UW-Stout	1,561	98.3%	27	1.7%	1,588
UW-Superior	352	93.6%	24	6.4%	376
UW-Whitewater	2,163	97.4%	57	2.6%	2,220
UW Colleges	3,173	99.3%	22	0.7%	3,195
Total	26,514	92.2%	2,234	7.8%	28,748

Note: Class standing is based on the total number of degree credits; its requirements vary by UW institution.

The number and proportion of UW System new freshmen enrolled with sophomore or higher class standing has been increasing since fall 2006 (Table 20). In fall 2006, 2.3 percent (676 enrollments) of UW System new freshmen entered with a sophomore or higher class standing; this proportion is 7.8 percent (2,234 enrollments) for fall 2016.

Table 20
UW System New Freshmen by Class Standing
Fall 2006 to Fall 2016

	Freshman Standing		Sophomore or Higher Class Standing		Total
	#	%	#	%	#
2006	28,666	97.7%	676	2.3%	29,342
2007	29,872	97.5%	780	2.5%	30,652
2008	29,439	97.1%	890	2.9%	30,329
2009	29,373	96.8%	965	3.2%	30,338
2010	29,161	96.4%	1,096	3.6%	30,257
2011	28,636	95.8%	1,252	4.2%	29,888
2012	28,518	95.1%	1,476	4.9%	29,994
2013	27,966	94.7%	1,570	5.3%	29,536
2014	27,258	93.7%	1,845	6.3%	29,103
2015	27,110	92.7%	2,150	7.3%	29,260
2016	26,514	92.2%	2,234	7.8%	28,748

Remediation

Table 21 shows the proportion of fall 2016 new freshmen who were placed into math or English remediation. In fall 2016, 17.3 percent of UW new freshmen were placed into math remediation and 6.0 percent were placed into English remediation. UW-Oshkosh had the highest proportion of its new freshmen requiring math remediation (43.2%) while UW-Superior had the highest proportion of its new freshmen requiring English remediation (24.7%).

Table 21
UW System New Freshmen Placed into Math/English Remediation by Institution
Fall 2016

	Placed into Math Remediation		Placed into English Remediation	
	#	%	#	%
UW-Madison	13	0.2%	N/A	N/A
UW-Milwaukee	938	30.1%	144	4.6%
UW-Eau Claire	360	15.5%	N/A	N/A
UW-Green Bay	158	18.1%	83	9.5%
UW-La Crosse	54	2.6%	27	1.3%
UW-Oshkosh	649	43.2%	86	5.7%
UW-Parkside	269	40.4%	N/A	N/A
UW-Platteville	577	37.0%	85	5.4%
UW-River Falls	52	4.3%	143	11.7%
UW-Stevens Point	125	7.9%	N/A	N/A
UW-Stout	43	2.7%	231	14.5%
UW-Superior	124	33.0%	93	24.7%
UW-Whitewater	526	23.7%	139	6.3%
UW Colleges	1,097	34.3%	691	21.6%
Total	4,985	17.3%	1,722	6.0%

Note: Remediation requirements vary by UW institution. UW-Madison, UW-Eau Claire, UW-Parkside, and UW-Stevens Point do not identify students needing English remediation and do not offer courses that are specifically intended for remedial English.

The proportion of UW new freshmen placed into math remediation increased from 18.3 percent in 2006 to 21.6 percent in 2008 but this share has continually declined from 2009 to reach 17.3 percent for fall 2016 (Table 22). The proportion of UW new freshmen placed into English remediation has been declining for four consecutive years and is 6.0 percent in fall 2016.

Table 22
UW System New Freshmen Placed into Math/English Remediation
Fall 2006 to Fall 2016

	Placed into Math Remediation		Placed into English Remediation	
	#	%	#	%
2006	5,377	18.3%	1,891	6.4%
2007	6,525	21.3%	2,062	6.7%
2008	6,547	21.6%	2,512	8.3%
2009	6,517	21.5%	2,624	8.6%
2010	6,438	21.3%	2,388	7.9%
2011	6,263	21.0%	2,347	7.9%
2012	6,221	20.7%	2,965	9.9%
2013	6,082	20.6%	2,725	9.2%
2014	5,478	18.8%	2,438	8.4%
2015	5,126	17.5%	1,792	6.1%
2016	4,985	17.3%	1,722	6.0%

Note: Remediation requirements may have changed at some UW institutions over the past ten years.

Appendix A
UW System New Freshman Applicants, Admissions, and Enrollment
by Resident Status, Fall 2006 to Fall 2016

		2006	2007	2008	2009	2010	2011	2012	2013	2014	2015	2016
# Applicants	WI Resident	35,778	37,025	36,670	39,759	36,799	37,015	35,670	34,677	33,862	34,025	33,505
	Non-Resident	14,160	16,190	17,169	18,048	18,370	21,826	23,063	25,773	25,922	28,494	29,119
	Reciprocity	7,807	8,072	7,987	8,632	8,423	8,519	8,309	8,271	7,812	8,752	8,424
	Total	57,745	61,287	61,826	66,439	63,592	67,360	67,042	68,721	67,596	71,271	71,048
# with Completed Applications	WI Resident	33,616	34,773	34,342	35,830	33,593	33,363	32,526	31,532	31,178	31,307	30,727
	Non-Resident	12,303	14,188	14,835	14,723	14,736	15,711	17,880	19,762	20,654	23,114	23,719
	Reciprocity	7,282	7,610	7,454	7,853	7,686	7,245	7,326	7,309	7,047	7,730	7,450
	Total	53,201	56,571	56,631	58,406	56,015	56,319	57,732	58,603	58,879	62,151	61,896
# Admitted	WI Resident	31,799	32,813	32,301	33,117	31,366	31,084	30,295	29,642	29,304	29,143	28,606
	Non-Resident	8,822	9,879	9,236	10,184	10,323	10,882	12,452	12,425	11,877	14,302	15,538
	Reciprocity	5,583	5,926	5,867	6,086	6,124	6,061	5,820	5,802	5,549	6,082	5,990
	Total	46,204	48,618	47,404	49,387	47,813	48,027	48,567	47,869	46,730	49,527	50,134
% Admitted	WI Resident	94.6%	94.4%	94.1%	92.4%	93.4%	93.2%	93.1%	94.0%	94.0%	93.1%	93.1%
	Non-Resident	71.7%	69.6%	62.3%	69.2%	70.1%	69.3%	69.6%	62.9%	57.5%	61.9%	65.5%
	Reciprocity	76.7%	77.9%	78.7%	77.5%	79.7%	83.7%	79.4%	79.4%	78.7%	78.7%	80.4%
	Total	86.8%	85.9%	83.7%	84.6%	85.4%	85.3%	84.1%	81.7%	79.4%	79.7%	81.0%
# Enrolled	WI Resident	23,976	24,732	24,542	24,531	24,149	23,734	23,076	22,747	22,289	22,019	21,396
	Non-Resident	2,567	3,070	2,870	2,848	3,130	3,112	3,855	3,845	3,933	4,281	4,312
	Reciprocity	2,799	2,850	2,917	2,959	2,978	3,042	3,063	2,944	2,881	2,960	3,040
	Total	29,342	30,652	30,329	30,338	30,257	29,888	29,994	29,536	29,103	29,260	28,748
% Enrolled	WI Resident	75.4%	75.4%	76.0%	74.1%	77.0%	76.4%	76.2%	76.7%	76.1%	75.6%	74.8%
	Non-Resident	29.1%	31.1%	31.1%	28.0%	30.3%	28.6%	31.0%	30.9%	33.1%	29.9%	27.8%
	Reciprocity	50.1%	48.1%	49.7%	48.6%	48.6%	50.2%	52.6%	50.7%	51.9%	48.7%	50.8%
	Total	63.5%	63.0%	64.0%	61.4%	63.3%	62.2%	61.8%	61.7%	62.3%	59.1%	57.3%

Note: Reciprocity includes Minnesota reciprocity students.
The admission rate is based on completed applications.

Appendix B
UW System New Freshman Applications, Admissions, and Enrollment
by Resident Status and Institution, Fall 2016

		MSN	MIL	EAU	GBY	LAC	OSH	PKS	PLT	RVF	STP	STO	SUP	WTW	UWC
# Applications	WI Resident	8,197	7,587	4,101	2,263	5,117	4,756	1,692	2,858	1,363	3,280	2,022	580	5,428	5,476
	Non-Resident	21,613	2,143	462	349	500	792	417	1099	186	559	292	345	1795	537
	Reciprocity	3,029	261	1,947	75	971	64	17	90	1,683	150	1,116	431	68	16
	Total	32,839	9,991	6,510	2,687	6,588	5,612	2,126	4,047	3,232	3,989	3,430	1,356	7,291	6,029
# Completed Applications	WI Resident	7,580	6,506	3,721	1,718	4,650	4,064	1,337	2,463	1,159	2,979	1,882	488	4,727	4,210
	Non-Resident	17,963	1,643	281	210	392	603	281	835	118	461	231	260	1446	365
	Reciprocity	2,645	221	1,700	56	869	56	11	77	1,393	141	1,014	372	55	7
	Total	28,188	8,370	5,702	1,984	5,911	4,723	1,629	3,375	2,670	3,581	3,127	1,120	6,228	4,582
# Admitted	WI Resident	5,692	5,689	3,354	1,702	3,877	3,143	1,074	2,379	1,026	2,685	1,820	441	3,802	4,177
	Non-Resident	10,135	1,433	230	207	324	459	244	798	108	428	227	255	1210	364
	Reciprocity	1,454	200	1,494	56	690	47	10	74	1,198	135	985	336	44	7
	Total	17,281	7,322	5,078	1,965	4,891	3,649	1,328	3,251	2,332	3,248	3,032	1,032	5,056	4,548
% Admitted	WI Resident	75%	87%	90%	99%	83%	77%	80%	97%	89%	90%	97%	90%	80%	99%
	Non-Resident	56%	87%	82%	99%	83%	76%	87%	96%	92%	93%	98%	98%	84%	100%
	Reciprocity	55%	90%	88%	100%	79%	84%	91%	96%	86%	96%	97%	90%	80%	100%
	Total	61%	87%	89%	99%	83%	77%	82%	96%	87%	91%	97%	92%	81%	99%
% Enrolled	WI Resident	64%	46%	47%	46%	43%	42%	53%	51%	55%	51%	54%	35%	47%	73%
	Non-Resident	21%	30%	35%	32%	35%	34%	40%	40%	44%	38%	43%	25%	34%	41%
	Reciprocity	44%	32%	43%	41%	42%	21%	20%	31%	51%	36%	52%	46%	30%	57%
	Total	37%	43%	46%	44%	43%	41%	50%	48%	52%	49%	52%	36%	44%	70%

Notes: Reciprocity includes Minnesota reciprocity students. The admission rate is based on completed applications. Applications and admissions include students who applied and/or were admitted to multiple UW institutions. Therefore, the totals derived by aggregating institution values in Appendices B, C, and D will not match the UW System totals reported in Tables 1, 2, 3, and Appendix A due to duplication.

Appendix C
UW System New Freshman Applications, Admissions, and Enrollment
by Gender and Institution, Fall 2016

		MSN	MIL	EAU	GBY	LAC	OSH	PKS	PLT	RVF	STP	STO	SUP	WTW	UWC
# Applications	Female	16,751	5,629	4,229	1,791	3,905	3,343	1,185	1,470	1,960	2,213	1,637	757	3,590	3,210
	Male	16,088	4,362	2,281	896	2,683	2,269	941	2,577	1,272	1,776	1,793	599	3,701	2,819
	Total	32,839	9,991	6,510	2,687	6,588	5,612	2,126	4,047	3,232	3,989	3,430	1,356	7,291	6,029
# Completed Applications	Female	14,441	4,746	3,733	1,330	3,534	2,807	908	1,168	1,650	1,994	1,471	623	3,057	2,387
	Male	13,747	3,624	1,969	654	2,377	1,916	721	2,207	1,020	1,587	1,656	497	3,171	2,195
	Total	28,188	8,370	5,702	1,984	5,911	4,723	1,629	3,375	2,670	3,581	3,127	1,120	6,228	4,582
# Admitted	Female	9,257	4,241	3,404	1,317	3,009	2,237	745	1,116	1,471	1,820	1,436	584	2,577	2,366
	Male	8,024	3,081	1,674	648	1,882	1,412	583	2,135	861	1,428	1,596	448	2,479	2,182
	Total	17,281	7,322	5,078	1,965	4,891	3,649	1,328	3,251	2,332	3,248	3,032	1,032	5,056	4,548
% Admitted	Female	64%	89%	91%	99%	85%	80%	82%	96%	89%	91%	98%	94%	84%	99%
	Male	58%	85%	85%	99%	79%	74%	81%	97%	84%	90%	96%	90%	78%	99%
	Total	61%	87%	89%	99%	83%	77%	82%	96%	87%	91%	97%	92%	81%	99%
% Enrolled	Female	37%	40%	45%	44%	41%	40%	49%	45%	52%	46%	48%	34%	40%	69%
	Male	38%	46%	48%	44%	46%	42%	52%	50%	52%	52%	56%	39%	48%	71%
	Total	37%	43%	46%	44%	43%	41%	50%	48%	52%	49%	52%	36%	44%	70%

Note: The admission rate is based on completed applications. Applications and admissions include students who applied and/or were admitted to multiple UW institutions. Therefore, the totals derived by aggregating institution values in Appendices B, C, and D will not match the UW System totals reported in Tables 1, 2, 3, and Appendix A due to duplication.

Appendix D
UW System New Freshman Applications, Admissions, and Enrollment
by Race/Ethnicity and Institution, Fall 2016

		MSN	MIL	EAU	GBY	LAC	OSH	PKS	PLT	RVF	STP	STO	SUP	WTW	UWC
# Applications	AA	967	1,187	168	169	151	563	429	187	158	291	164	54	746	520
	HL	2,119	1,501	276	210	328	501	444	297	185	247	162	53	718	560
	AI	54	35	26	26	9	28	6	5	12	25	11	17	21	30
	SA	336	301	156	62	89	191	39	52	103	74	109	11	97	179
	TMR-URM	448	464	135	96	175	205	85	95	92	90	93	53	220	168
	URM	3,924	3,488	761	563	752	1,488	1,003	636	550	727	539	188	1,802	1,457
	HPI	24	8	3		3	4	2		2	1	4		4	8
	OA	2,312	259	87	26	87	63	47	36	56	35	40	9	107	64
	TMR-Non-URM	643	123	56	17	74	31	11	32	25	16	28	6	48	37
	White	19,575	5,763	5,548	2,000	5,630	3,983	1,040	3,257	2,542	3,157	2,761	914	5,251	4,200
	Unknown	81	11		3	5	11	1	11	4	1	11	3	6	257
	International	6,280	339	53	77	37	32	22	74	53	52	47	236	73	6
Total	32,839	9,991	6,508	2,686	6,588	5,612	2,126	4,046	3,232	3,989	3,430	1,356	7,291	6,029	
# Completed Applications	AA	667	797	74	53	81	383	280	97	102	217	135	38	537	252
	HL	1,724	1,241	219	124	248	378	336	211	138	200	131	43	575	382
	AI	40	25	17	12	6	19	3	2	10	19	10	15	14	18
	SA	279	265	115	36	67	153	27	37	88	66	92	7	79	118
	TMR-URM	374	377	103	59	143	150	67	67	67	75	74	41	166	98
	URM	3,084	2,705	528	284	545	1,083	713	414	405	577	442	144	1,371	868
	HPI	22	4	1		1	4	2		2	1	2		4	5
	OA	1,994	221	78	20	78	54	40	28	45	28	38	8	85	47
	TMR-Non-URM	571	115	51	11	71	28	7	25	23	13	24	6	41	28
	White	17,432	5,157	5,020	1,631	5,182	3,533	853	2,869	2,161	2,910	2,585	788	4,679	3,434
	Unknown	70	6		1	4	8	1	7	4	1	7	3	5	194
	International	5,015	162	24	37	30	13	13	32	30	51	29	171	43	6
Total	28,188	8,370	5,702	1,984	5,911	4,723	1,629	3,375	2,670	3,581	3,127	1,120	6,228	4,582	
# Admitted	AA	358	507	45	51	52	179	154	79	63	137	119	21	255	240
	HL	1,107	1,010	182	120	198	257	265	197	105	166	123	36	402	378
	AI	20	20	11	12	3	12	2	2	3	14	7	11	9	18
	SA	165	220	100	34	49	123	23	35	65	49	89	4	69	117
	TMR-URM	249	298	88	58	118	107	49	63	49	57	68	34	111	97
	URM	1,899	2,055	426	275	420	678	493	376	285	423	406	106	846	850
	HPI	14	3	1		1	3	1		2	1	2		3	5
	OA	1,312	191	71	20	74	40	34	27	39	25	37	8	71	45
	TMR-Non-URM	398	108	50	11	65	23	6	25	22	13	24	6	34	28
	White	11,349	4,813	4,510	1,622	4,298	2,888	781	2,786	1,951	2,735	2,528	740	4,057	3,420
	Unknown	53	4		1	4	6	1	7	3	1	7	3	3	194
	International	2,256	148	20	36	29	11	12	30	30	50	28	169	42	6
Total	17,281	7,322	5,078	1,965	4,891	3,649	1,328	3,251	2,332	3,248	3,032	1,032	5,056	4,548	

Appendix D (Continued)
UW System New Freshman Applications, Admissions, and Enrollment
by Race/Ethnicity and Institution, Fall 2016

		MSN	MIL	EAU	GBY	LAC	OSH	PKS	PLT	RVF	STP	STO	SUP	WTW	UWC
% Admitted	AA	54%	64%	61%	96%	64%	47%	55%	81%	62%	63%	88%	55%	47%	95%
	HL	64%	81%	83%	97%	80%	68%	79%	93%	76%	83%	94%	84%	70%	99%
	AI	50%	80%	65%	100%	50%	63%	67%	100%	30%	74%	70%	73%	64%	100%
	SA	59%	83%	87%	94%	73%	80%	85%	95%	74%	74%	97%	57%	87%	99%
	TMR-URM	67%	79%	85%	98%	83%	71%	73%	94%	73%	76%	92%	83%	67%	99%
	URM	62%	76%	81%	97%	77%	63%	69%	91%	70%	73%	92%	74%	62%	98%
	HPI	64%	75%	100%	N/A	100%	75%	50%	N/A	100%	100%	100%	N/A	75%	100%
	OA	66%	86%	91%	100%	95%	74%	85%	96%	87%	89%	97%	100%	84%	96%
	TMR-Non-URM	70%	94%	98%	100%	92%	82%	86%	100%	96%	100%	100%	100%	83%	100%
	White	65%	93%	90%	99%	83%	82%	92%	97%	90%	94%	98%	94%	87%	100%
	Unknown	76%	67%	N/A	100%	100%	75%	100%	100%	75%	100%	100%	100%	60%	100%
	International	45%	91%	83%	97%	97%	85%	92%	94%	100%	98%	97%	99%	98%	100%
	Total	61%	87%	89%	99%	83%	77%	82%	96%	87%	91%	97%	92%	81%	99%
% Enrolled	AA	38%	40%	40%	35%	38%	31%	45%	20%	35%	39%	36%	24%	36%	45%
	HL	32%	39%	43%	34%	47%	34%	45%	37%	31%	41%	47%	28%	38%	68%
	AI	55%	50%	45%	58%	33%	42%	50%	N/A	33%	36%	57%	27%	22%	67%
	SA	55%	51%	42%	56%	33%	37%	17%	31%	14%	45%	36%	-	29%	64%
	TMR-URM	51%	48%	47%	34%	44%	45%	45%	52%	55%	49%	46%	47%	41%	62%
	URM	38%	42%	43%	38%	43%	36%	44%	36%	32%	42%	41%	32%	37%	60%
	HPI	50%	67%	-	-	-	N/A	N/A	-	50%	N/A	50%	-	33%	80%
	OA	24%	43%	39%	45%	32%	35%	53%	37%	23%	32%	35%	13%	34%	58%
	TMR-Non-URM	34%	39%	48%	55%	43%	35%	33%	32%	36%	62%	63%	17%	59%	71%
	White	41%	43%	46%	45%	43%	42%	54%	50%	56%	50%	55%	39%	45%	75%
	Unknown	23%	-	-	N/A	75%	83%	-	-	N/A	-	43%	-	33%	2%
	International	25%	42%	45%	42%	48%	55%	58%	63%	40%	54%	29%	30%	55%	N/A
	Total	37%	43%	46%	44%	43%	41%	50%	48%	52%	49%	52%	36%	44%	70%

Note: AA (African American), HL (Hispanic/Latino(a)), AI (American Indian), SA (Southeast Asian), TMR-URM (Students identifying as two or more races, one of which is an underrepresented minority group), URM (Underrepresented Minority), HPI (Hawaiian/Pacific Islander), OA (Other Asian), TMR-Non-URM (Students identifying as two or more races, none of which is an underrepresented minority group). Applications and admissions include students who applied and/or were admitted to multiple UW institutions.

The admission rate is based on completed applications. Applications and admissions include students who applied and/or were admitted to multiple UW institutions. Therefore, the totals derived by aggregating institution values in Appendices B, C, and D will not match the UW System totals reported in Tables 1, 2, 3, and Appendix A due to duplication.

Appendix E
UW System New Freshman Headcount by Institution
Fall 1976 to Fall 2016

	MSN	MIL	EAU	GBY	LAC	OSH	PKS	PLT	RVF	STP	STO	SUP	WTW	UWC	Total
1976	3,918	2,994	2,245	560	1,884	1,709	784	1,150	1,264	1,913	1,279	485	1,915	3,158	25,258
1977	4,217	2,741	2,623	563	2,140	1,666	783	1,154	1,154	2,053	1,291	553	1,826	3,293	26,057
1978	4,683	3,165	2,555	597	2,057	1,752	909	1,040	1,199	1,960	1,414	465	1,773	2,991	26,560
1979	4,836	2,833	2,695	677	2,176	1,851	1,009	1,107	1,245	1,970	1,407	425	2,026	3,104	27,361
1980	5,021	2,845	2,737	789	2,053	1,807	1,056	1,227	1,317	2,021	1,507	446	2,165	3,461	28,452
1981	4,683	2,808	2,441	773	2,040	2,004	1,045	1,297	1,294	1,966	1,375	404	2,195	3,505	27,830
1982	4,797	2,684	2,494	714	1,928	1,797	954	1,246	1,116	1,712	1,380	382	2,082	3,606	26,892
1983	5,110	2,847	2,475	693	2,028	1,771	1,075	1,201	1,082	1,727	1,374	347	2,135	3,872	27,737
1984	5,490	2,866	2,355	708	2,072	1,869	871	1,062	1,103	1,798	1,388	321	2,189	3,660	27,752
1985	5,687	2,749	2,387	811	2,131	1,804	817	1,176	1,001	1,911	1,436	333	2,254	3,481	27,978
1986	5,383	2,679	2,472	696	2,114	1,947	886	1,127	1,145	1,838	1,419	368	2,136	3,738	27,948
1987	5,181	2,391	2,320	817	1,977	1,857	753	1,156	1,052	1,691	1,404	375	2,152	3,780	26,906
1988	5,934	2,649	2,278	862	1,890	1,837	942	1,059	1,048	1,705	1,361	412	1,898	4,241	28,116
1989	4,993	2,466	1,934	782	1,690	1,730	760	995	957	1,693	1,143	414	1,836	3,663	25,056
1990	4,699	2,450	1,736	746	1,622	1,608	785	943	940	1,581	1,130	346	1,953	3,570	24,109
1991	4,642	2,157	1,792	829	1,655	1,455	761	1,027	1,054	1,503	1,177	478	1,819	3,374	23,723
1992	4,416	1,882	1,869	816	1,495	1,492	769	910	1,026	1,398	1,000	363	1,785	3,454	22,675
1993	4,631	1,930	1,956	770	1,702	1,514	783	950	846	1,375	1,030	345	1,846	3,531	23,209
1994	4,681	1,806	2,088	883	1,504	1,393	770	958	1,004	1,384	1,075	285	1,704	3,125	22,660
1995	5,164	1,988	2,038	848	1,747	1,523	744	948	968	1,505	1,144	306	1,900	2,954	23,777
1996	5,455	2,253	2,048	1,027	1,735	1,559	686	965	1,161	1,586	1,287	324	1,842	2,839	24,767
1997	5,880	2,481	2,171	953	1,706	1,758	819	998	1,152	1,551	1,250	352	1,914	2,916	25,901
1998	5,596	2,700	2,156	1,035	1,744	1,923	883	1,122	1,207	1,517	1,345	396	1,931	3,503	27,058
1999	5,664	2,938	2,016	934	1,638	1,852	889	1,138	1,127	1,500	1,324	432	1,907	3,764	27,123
2000	5,736	2,979	2,094	996	1,614	1,652	823	1,003	1,126	1,530	1,322	422	2,077	3,964	27,338
2001	6,095	3,035	2,136	920	1,599	1,871	926	1,094	1,117	1,518	1,289	351	1,895	4,154	28,000
2002	5,514	3,314	2,057	917	1,557	1,811	832	1,126	1,060	1,476	1,312	314	2,035	4,141	27,466
2003	5,579	3,856	1,877	971	1,510	1,786	976	1,136	1,228	1,513	1,280	345	1,833	4,397	28,287
2004	5,641	3,823	2,034	998	1,546	1,729	985	1,202	1,212	1,536	1,292	347	1,762	4,305	28,412
2005	6,141	4,345	2,069	925	1,758	1,638	878	1,246	1,209	1,534	1,708	346	1,712	4,126	29,635
2006	5,643	4,090	2,026	1,028	1,752	1,765	907	1,439	1,296	1,650	1,516	312	1,805	4,113	29,342
2007	5,994	4,598	2,034	1,003	1,754	1,760	951	1,546	1,287	1,624	1,498	350	2,063	4,190	30,652
2008	5,773	4,118	2,059	1,017	1,785	1,843	929	1,554	1,345	1,632	1,644	312	2,154	4,164	30,329
2009	5,680	4,151	2,015	1,049	1,828	1,907	890	1,633	1,336	1,645	1,541	369	1,953	4,341	30,338
2010	5,927	3,827	2,072	906	1,840	1,861	805	1,604	1,245	1,661	1,596	380	2,044	4,489	30,257
2011	5,828	3,746	1,953	910	1,978	1,872	766	1,721	1,234	1,613	1,476	352	2,006	4,433	29,888
2012	6,279	3,492	2,073	921	1,897	1,841	712	1,754	1,119	1,637	1,498	366	2,168	4,237	29,994
2013	6,339	3,303	2,017	809	2,005	1,748	762	1,646	1,071	1,636	1,573	325	2,108	4,194	29,536
2014	6,264	3,454	2,100	770	1,986	1,709	630	1,705	1,015	1,631	1,469	330	2,151	3,889	29,103
2015	6,269	3,315	2,239	789	2,071	1,572	620	1,621	1,066	1,792	1,575	366	2,189	3,776	29,260
2016	6,430	3,118	2,318	872	2,093	1,501	666	1,561	1,219	1,591	1,588	376	2,220	3,195	28,748

Appendix F
UW System New Freshmen by Average High School Percentile Rank and Institution
Fall 1976 to Fall 2016

	MSN	MIL	EAU	GBY	LAC	OSH	PKS	PLT	RVF	STP	STO	SUP	WTW	UWC	Total
1976	81.2	66.9	70.9	67.8	65.8	58.8	63.3	66.8	60.4	61.1	61.8	65.3	63.3	60.9	66.8
1977	80.2	68.6	70.6	68.1	64.7	67.6	62.9	66.9	62.5	63.6	61.4	59.4	65.2	61.6	67.2
1978	79.5	65.8	70.4	65.1	66.9	58.2	62.4	67.2	62.6	64.5	60.4	62.2	63.6	61.8	67.1
1979	79.3	66.2	70.7	64.5	65.5	59.1	62.9	64.5	62.1	62.8	60.9	63.2	64.4	61.7	66.9
1980	79.8	64.8	69.9	64.8	65.7	60.2	60.9	64.9	62.2	62.2	60.4	59.0	64.6	58.9	66.3
1981	80.7	64.0	73.8	64.1	66.2	60.0	60.7	65.9	61.6	62.5	59.1	61.4	64.9	59.1	66.5
1982	80.0	67.1	72.0	62.8	64.4	60.3	62.0	63.3	63.4	61.2	57.0	64.1	63.5	58.7	66.3
1983	80.2	66.0	70.5	66.2	63.2	62.0	59.2	61.9	61.2	62.0	55.6	58.6	63.1	56.9	65.6
1984	78.9	66.9	68.6	65.7	63.0	62.6	59.6	63.3	60.0	61.7	53.2	59.1	60.7	57.3	65.3
1985	79.1	66.6	67.9	64.7	63.2	61.3	59.6	63.3	59.7	60.2	53.6	59.2	60.8	55.0	65.0
1986	78.5	66.5	69.2	63.4	61.6	62.0	60.2	63.2	58.6	61.6	54.9	58.7	62.8	53.8	64.7
1987	80.6	65.7	68.4	63.6	63.0	63.0	60.7	65.3	60.3	65.8	56.4	60.6	64.3	51.4	65.4
1988	79.9	64.2	72.6	67.5	67.0	66.2	57.8	64.5	64.1	67.1	58.0	62.8	68.0	51.2	66.5
1989	81.4	62.8	76.4	68.8	70.0	66.3	62.9	68.4	63.8	67.6	60.7	62.6	69.8	53.7	68.1
1990	81.7	62.6	76.1	68.7	70.0	68.6	60.5	67.4	64.9	65.6	57.8	60.2	68.6	51.2	67.4
1991	81.2	62.8	74.9	69.2	69.4	69.5	59.2	68.5	64.1	69.3	54.9	61.9	66.6	51.7	67.3
1992	82.2	62.7	75.1	71.5	70.7	71.6	58.4	71.0	66.7	70.4	63.7	65.9	65.1	51.1	68.3
1993	82.9	61.3	72.9	72.9	72.5	71.7	58.1	71.2	70.8	70.9	64.4	65.7	65.2	50.5	68.5
1994	84.6	60.7	72.8	70.9	74.9	71.3	59.0	70.3	69.1	72.7	61.2	63.9	64.9	50.3	69.1
1995	85.6	59.7	72.4	73.2	74.8	68.9	58.3	68.2	67.6	71.7	60.1	63.9	64.8	49.6	69.1
1996	84.6	58.3	71.2	70.1	75.3	66.9	59.6	69.0	70.7	69.1	60.7	64.0	65.7	51.0	68.9
1997	85.0	58.9	71.7	71.4	76.3	67.8	59.0	67.3	70.5	71.1	61.9	62.5	64.3	50.1	69.2
1998	86.2	58.5	73.1	71.4	77.6	68.2	56.8	67.6	70.6	73.0	63.4	60.9	64.5	50.1	69.0
1999	86.3	58.5	74.8	72.4	78.4	66.9	56.3	66.8	70.8	72.7	62.5	61.8	63.9	49.1	68.5
2000	86.8	58.9	74.2	72.2	79.0	66.6	56.0	64.9	69.8	73.5	64.0	63.2	63.4	47.8	68.3
2001	87.7	59.1	73.4	73.1	78.9	64.8	56.1	65.9	68.5	71.9	64.6	66.0	62.8	48.2	68.5
2002	88.6	59.9	74.8	72.8	80.0	65.2	54.2	64.4	68.3	73.2	64.8	63.0	64.2	49.3	68.5
2003	88.6	60.0	76.8	72.3	82.3	69.4	52.3	66.2	68.5	72.6	65.6	67.0	65.3	49.7	68.8
2004	88.7	59.1	76.2	--	83.3	70.1	55.5	64.1	64.5	73.0	61.6	66.2	65.6	49.8	68.5
2005	88.5	58.1	76.2	--	82.0	69.2	55.5	64.6	65.3	70.4	61.4	67.3	64.1	48.5	67.9
2006	89.1	58.5	75.4	--	82.3	69.2	56.7	64.2	63.9	71.2	62.4	65.3	63.9	49.2	67.7
2007	89.1	57.0	75.5	--	82.4	69.0	57.0	64.0	62.0	72.1	62.1	66.1	63.9	47.8	67.2
2008	88.9	58.1	75.5	--	81.8	68.1	58.1	62.7	64.0	71.9	59.2	65.0	63.2	48.6	67.3
2009	88.3	57.1	76.1	--	81.8	67.1	59.3	63.9	64.1	71.8	62.0	63.1	63.1	48.3	67.3
2010	88.7	57.4	74.7	--	80.2	68.0	59.2	63.2	63.5	72.8	61.4	63.2	63.6	48.3	66.9
2011	89.3	58.6	75.2	--	80.1	68.0	59.1	63.8	61.3	73.6	62.4	62.9	63.8	48.2	67.4
2012	89.1	59.7	74.7	--	81.2	66.6	61.2	62.9	63.8	70.7	60.2	60.4	61.4	49.3	67.5
2013	87.4	57.6	73.8	--	79.6	66.3	61.3	64.0	63.6	67.2	60.0	60.0	61.6	48.6	66.8
2014	87.9	57.9	71.9	--	78.9	65.1	60.7	64.2	63.7	66.1	61.8	56.6	60.6	47.3	66.3
2015	88.1	58.9	72.3	--	77.7	63.5	63.2	64.6	62.6	62.6	60.8	54.6	62.8	47.9	66.0
2016	87.5	59.8	71.4	--	76.3	64.1	62.3	64.5	64.0	63.9	58.6	54.6	62.1	48.9	66.8

Note: Excludes students for whom a high school rank was not provided. In fall 2004, UW-Green Bay discontinued collecting high school rank from applicants.