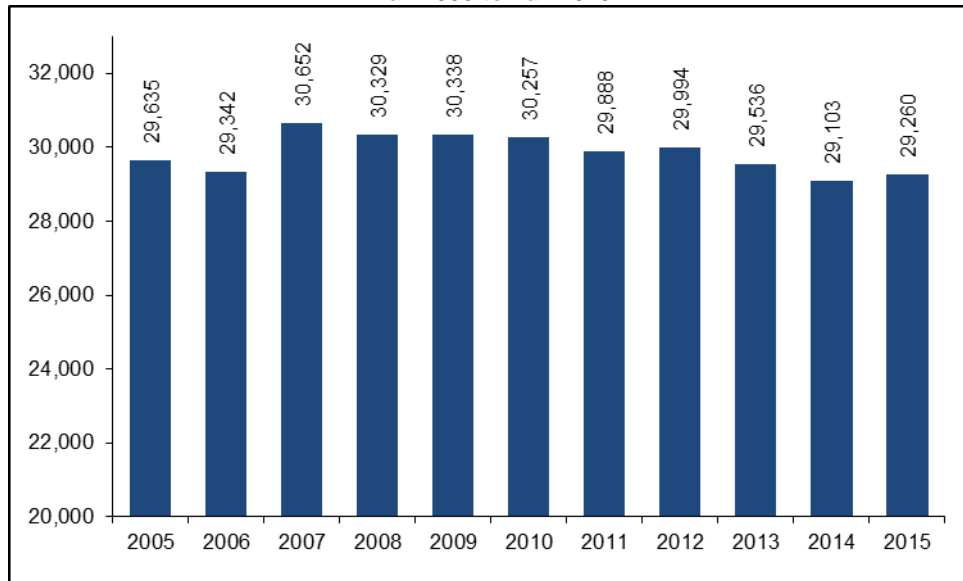




# Informational Memorandum

## The New Freshman Class: Fall 2015

**UW System New Freshman Headcount Enrollment  
Fall 2005 to Fall 2015**



### Highlights

**Wisconsin resident new freshman applicants for Fall 2015:**

- Admission rate ..... 93%
- Yield rate ..... 76%

**Percentage of Fall 2015 UW System new freshmen who:**

- are Wisconsin residents ..... 75%
- are women..... 53%
- are underrepresented minority students ..... 14%
- are first-generation college students ..... 38%
- were 19 and under ..... 96%
- were full-time students ..... 97%
- scored above the national ACT average score of 21 ..... 67%
- were in the top quartile of their high school classes ..... 42%
- enrolled with sophomore or higher class standing ..... 7%
- required math remediation ..... 18%
- required English remediation ..... 6%

## APPLICATION AND ADMISSION

In fall 2015, 71,271 individuals applied to UW institutions as new freshmen. Among these individuals, 62,151 applicants submitted the required documents and fee to complete an application and 49,527 were admitted to at least one UW institution. A total of 29,260 new freshmen enrolled in the UW System in fall 2015.

The total number of new freshman applicants for fall 2015 has increased 26.4 percent (14,869) from fall 2005. The systemwide admission rate declined 10.4 percentage points from ten years ago while the number of admitted students increased 4.8 percent (2,281). The systemwide yield rate decreased 3.6 percentage points. See Appendix A for details.

### Resident Status

The number of Wisconsin resident new freshman applicants decreased over the last few years while the number of non-resident applicants increased (Table 1). In fall 2015, 31,307 Wisconsin resident new freshman applicants completed an application, down from 33,977 in fall 2005. The number of non-resident applicants who completed an application was 23,114, twice the number in fall 2005. As a result, the proportion of non-resident applicants increased while the proportion of Wisconsin resident applicants decreased. See Appendix A for details of UW System new freshman applicants, admissions, and enrollment by resident status over the last ten years.

The admission rates and yield rates for Wisconsin resident new freshman applicants stayed stable over the last decade and were the highest among all residency groups. In fall 2015, Wisconsin resident new freshman applicants had an admission rate of 93.1 percent and a yield rate of 75.6 percent. Non-resident new freshman applicants had the lowest admission rates among all residency groups in fall 2010 and fall 2015 due to the large increase in the number of applicants. See Appendix B for applications, admissions, and enrollment by resident status and UW institution in fall 2015.

**Table 1**  
**UW System New Freshman Applicants, Admissions, and Enrollment**  
**by Resident Status**

		# Applicants		Admitted		Enrolled	
		Total	Completed	#	%	#	%
Fall 2005	WI Resident	36,037	33,977	32,190	94.7%	24,187	75.1%
	Non-Resident	12,822	11,323	9,352	82.6%	2,537	27.1%
	Reciprocity	7,543	7,157	5,704	79.7%	2,911	51.0%
	Total	56,402	52,457	47,246	90.1%	29,635	62.7%
Fall 2010	WI Resident	36,799	33,593	31,366	93.4%	24,149	77.0%
	Non-Resident	18,370	14,736	10,323	70.1%	3,130	30.3%
	Reciprocity	8,423	7,686	6,124	79.7%	2,978	48.6%
	Total	63,592	56,015	47,813	85.4%	30,257	63.3%
Fall 2015	WI Resident	34,025	31,307	29,143	93.1%	22,019	75.6%
	Non-Resident	28,494	23,114	14,302	61.9%	4,281	29.9%
	Reciprocity	8,752	7,730	6,082	78.7%	2,960	48.7%
	Total	71,271	62,151	49,527	79.7%	29,260	59.1%

Note: The admission rate is based on completed applications.  
Reciprocity includes Minnesota reciprocity students.

## Gender

Female applicants comprised 52.2 percent (37,182) of the new freshman applicants in fall 2015, while 47.8 percent (34,089) were male applicants (Table 2). In 2005, 2010, and 2015, female applicants maintained a higher admission rate while admitted males maintained a higher yield rate. The admission rates for both males and females in fall 2015 declined from ten and five years ago. See Appendix C for applications, admissions, and enrollment by gender and UW institution.

**Table 2**  
**UW System New Freshman Applicants, Admissions, and Enrollment**  
**by Gender**

		# Applicants		Admitted		Enrolled	
		Total	Completed	#	%	#	%
Fall 2005	Female	30,584	28,565	26,064	91.2%	16,225	62.3%
	Male	25,818	23,892	21,182	88.7%	13,410	63.3%
	Total	56,402	52,457	47,246	90.1%	29,635	62.7%
Fall 2010	Female	33,211	29,399	25,596	87.1%	15,888	62.1%
	Male	30,381	26,616	22,217	83.5%	14,369	64.7%
	Total	63,592	56,015	47,813	85.4%	30,257	63.3%
Fall 2015	Female	37,182	32,743	26,954	82.3%	15,530	57.6%
	Male	34,089	29,408	22,573	76.8%	13,730	60.8%
	Total	71,271	62,151	49,527	79.7%	29,260	59.1%

## Underrepresented Minority (URM) Status

The proportion of underrepresented minority (URM) applicants increased from 9.4 percent to 17.1 percent from in ten years (Table 3). The number of international applicants has more than tripled since 2005. The admission rate for URM applicants has decreased from ten and five years ago. Compared with non-URM applicants, URM applicants had lower admission rates and yield rates in each of the three years presented below. See Appendix D for applications, admissions, and enrollment by race/ethnicity and UW institution.

**Table 3**  
**UW System New Freshman Applicants, Admissions, and Enrollment**  
**by Underrepresented Minority (URM) Status**

		# Applicants		Admitted		Enrolled	
		Total	Completed	#	%	#	%
Fall 2005	URM	5,311	4,248	3,793	89.3%	2,308	60.8%
	Non-URM	49,244	46,895	42,470	90.6%	26,981	63.5%
	International	1,847	1,314	983	74.8%	346	35.2%
	Total	56,402	52,457	47,246	90.1%	29,635	62.7%
Fall 2010	URM	8,677	6,526	5,279	80.9%	3,369	63.8%
	Non-URM	50,586	46,874	40,865	87.2%	26,262	64.3%
	International	4,329	2,615	1,669	63.8%	626	37.5%
	Total	63,592	56,015	47,813	85.4%	30,257	63.3%
Fall 2015	URM	12,153	9,572	7,197	75.2%	4,014	55.8%
	Non-URM	52,202	47,241	39,629	83.9%	24,430	61.6%
	International	6,916	5,338	2,701	50.6%	816	30.2%
	Total	71,271	62,151	49,527	79.7%	29,260	59.1%

Note: Underrepresented minority (URM) students include those who indicated African American, American Indian, Hispanic/Latino(a), or Southeast Asian alone or in combination with other race/ethnicities.

## ENROLLMENT

### Headcount

In fall 2015, 29,260 new freshmen enrolled in the UW System (Table 4). This is a decrease of 997 students (3.3%) from fall 2010 and a decrease of 375 (1.3%) from ten years ago. The fall 2015 enrollment increased 157 students from fall 2014 but was down 1,392 students (4.5%) from fall 2007, when the all-time high number of new freshmen was recorded (30,652).

UW-Madison, UW Colleges, and UW-Milwaukee enroll almost half of the UW System new freshmen (Table 4). In fall 2015, the new freshman proportion of total institutional headcount enrollment ranged from 11.2 percent at UW-Oshkosh to 27.9 percent at UW Colleges. See Appendix E for new freshman enrollment by UW institution from fall 1976 to fall 2015.

**Table 4**  
**UW System New Freshman Headcount by Institution**  
**Fall 2005, Fall 2010, and Fall 2015**

	2005			2010			2015		
	#	% of UWS NF Enroll.	% of Inst. Enroll.	#	% of UWS NF Enroll.	% of Inst. Enroll.	#	% of UWS NF Enroll.	% of Inst. Enroll.
UW-Madison	6,141	20.7%	14.9%	5,927	19.6%	14.1%	6,269	21.4%	14.6%
UW-Milwaukee	4,345	14.7%	15.5%	3,827	12.6%	12.6%	3,315	11.3%	12.2%
UW-Eau Claire	2,069	7.0%	19.3%	2,072	6.8%	18.2%	2,239	7.7%	21.3%
UW-Green Bay	925	3.1%	15.9%	906	3.0%	13.7%	789	2.7%	11.6%
UW-La Crosse	1,758	5.9%	18.7%	1,840	6.1%	18.2%	2,071	7.1%	19.8%
UW-Oshkosh	1,638	5.5%	13.1%	1,861	6.2%	13.7%	1,572	5.4%	11.2%
UW-Parkside	878	3.0%	17.5%	805	2.7%	15.6%	620	2.1%	14.0%
UW-Platteville	1,246	4.2%	19.1%	1,604	5.3%	20.2%	1,621	5.5%	18.1%
UW-River Falls	1,209	4.1%	19.7%	1,245	4.1%	18.0%	1,066	3.6%	17.9%
UW-Stevens Point	1,534	5.2%	17.4%	1,661	5.5%	17.5%	1,792	6.1%	19.4%
UW-Stout	1,708	5.8%	20.8%	1,596	5.3%	17.1%	1,575	5.4%	16.5%
UW-Superior	346	1.2%	12.0%	380	1.3%	13.3%	366	1.3%	14.7%
UW-Whitewater	1,712	5.8%	15.9%	2,044	6.8%	17.7%	2,189	7.5%	17.7%
UW Colleges	4,126	13.9%	32.8%	4,489	14.8%	31.2%	3,776	12.9%	27.9%
<b>Total</b>	<b>29,635</b>	<b>100.0%</b>	<b>17.6%</b>	<b>30,257</b>	<b>100.0%</b>	<b>16.6%</b>	<b>29,260</b>	<b>100.0%</b>	<b>16.4%</b>

## DEMOGRAPHICS

### Resident Status

In fall 2015, 75.3 percent (22,019) of new freshmen were Wisconsin residents, 14.5 percent (4,247) were non-resident new freshmen, and the remaining 10.2 percent (2,994) were enrolled under the Minnesota or Michigan reciprocity agreements (Table 5). Non-resident students include those enrolled in special tuition programs. In fall 2015, 340 new freshmen enrolled in UW-Platteville's Tri-State Initiative, 715 enrolled in the Midwest Student Exchange Program, 25 enrolled in the Return to Wisconsin program, and 20 enrolled in the Veterans Choice program. Combined, these programs accounted for 25.9 percent of non-resident new freshmen in fall 2015.

**Table 5**  
**UW System New Freshmen by Resident Status and Institution**  
**Fall 2015**

	WI Resident		Non-Resident		Reciprocity		Total #
	#	%	#	%	#	%	
UW-Madison	3,612	57.6%	2,039	32.5%	618	9.9%	6,269
UW-Milwaukee	2,848	85.9%	398	12.0%	69	2.1%	3,315
UW-Eau Claire	1,486	66.4%	86	3.8%	667	29.8%	2,239
UW-Green Bay	725	91.9%	53	6.7%	11	1.4%	789
UW-La Crosse	1,711	82.6%	93	4.5%	267	12.9%	2,071
UW-Oshkosh	1,418	90.2%	143	9.1%	11	0.7%	1,572
UW-Parkside	513	82.7%	104	16.8%	3	0.5%	620
UW-Platteville	1,207	74.5%	378	23.3%	36	2.2%	1,621
UW-River Falls	530	49.7%	36	3.4%	500	46.9%	1,066
UW-Stevens Point	1,522	84.9%	211	11.8%	59	3.3%	1,792
UW-Stout	938	59.6%	84	5.3%	553	35.1%	1,575
UW-Superior	130	35.5%	90	24.6%	146	39.9%	366
UW-Whitewater	1,785	81.5%	387	17.7%	17	0.8%	2,189
UW Colleges	3,594	95.2%	145	3.8%	37	1.0%	3,776
<b>Total</b>	<b>22,019</b>	<b>75.3%</b>	<b>4,247</b>	<b>14.5%</b>	<b>2,994</b>	<b>10.2%</b>	<b>29,260</b>

Note: Reciprocity includes Minnesota or Michigan reciprocity students.

The proportion of non-resident new freshmen continued to increase and was 14.5 percent systemwide in fall 2015. Similarly, the proportion of Wisconsin resident new freshmen declined steadily over the last ten years. The proportion of new freshmen who enrolled under the Minnesota or Michigan reciprocity agreements was stable around 10 percent in the last decade (Table 6).

**Table 6**  
**UW System New Freshmen by Resident Status**  
**Fall 2005 to Fall 2015**

	WI Resident		Non-Resident		Reciprocity		Total #
	#	%	#	%	#	%	
2005	24,187	81.6%	2,497	8.4%	2,951	10.0%	29,635
2006	23,976	81.7%	2,532	8.6%	2,834	9.7%	29,342
2007	24,732	80.7%	3,039	9.9%	2,881	9.4%	30,652
2008	24,542	80.9%	2,842	9.4%	2,945	9.7%	30,329
2009	24,531	80.9%	2,816	9.3%	2,991	9.9%	30,338
2010	24,149	79.8%	3,104	10.3%	3,004	9.9%	30,257
2011	23,734	79.4%	3,073	10.3%	3,081	10.3%	29,888
2012	23,076	76.9%	3,821	12.7%	3,097	10.3%	29,994
2013	22,747	77.0%	3,809	12.9%	2,980	10.1%	29,536
2014	22,289	76.6%	3,891	13.4%	2,923	10.0%	29,103
2015	22,019	75.3%	4,247	14.5%	2,994	10.2%	29,260

**Gender**

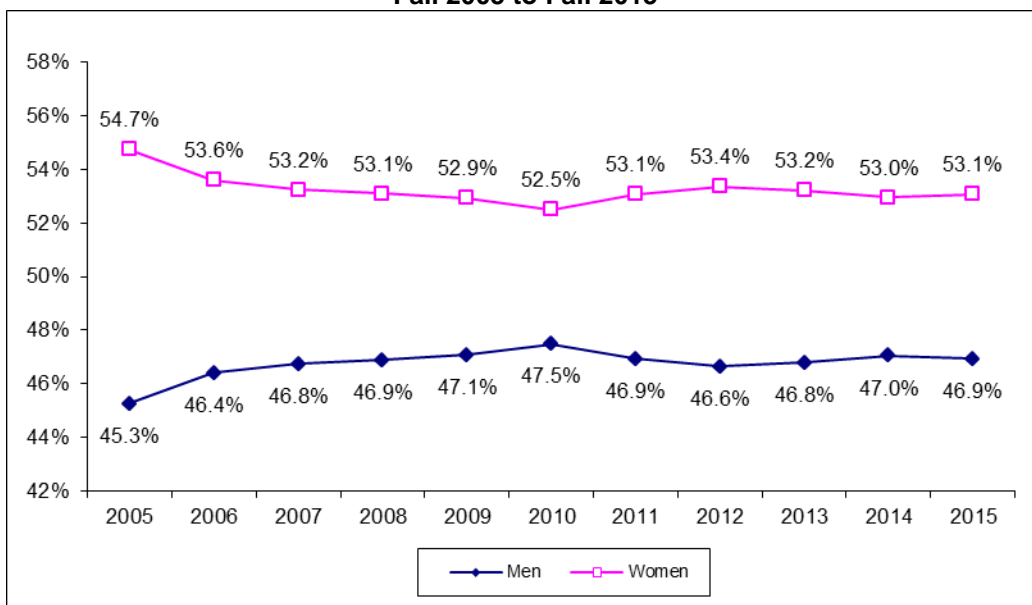
Female students comprised 53.1 percent of the new freshman class in fall 2015, while 46.9 percent were male students (Table 7). The percentage of female students ranged from 32.0 percent at UW-Platteville to 67.4 percent at UW-Green Bay.

**Table 7  
UW System New Freshmen by Gender and Institution  
Fall 2015**

	Female		Male		Total
	#	%	#	%	#
UW-Madison	3,237	51.6%	3,032	48.4%	6,269
UW-Milwaukee	1,763	53.2%	1,552	46.8%	3,315
UW-Eau Claire	1,433	64.0%	806	36.0%	2,239
UW-Green Bay	532	67.4%	257	32.6%	789
UW-La Crosse	1,242	60.0%	829	40.0%	2,071
UW-Oshkosh	924	58.8%	648	41.2%	1,572
UW-Parkside	343	55.3%	277	44.7%	620
UW-Platteville	518	32.0%	1,103	68.0%	1,621
UW-River Falls	668	62.7%	398	37.3%	1,066
UW-Stevens Point	924	51.6%	868	48.4%	1,792
UW-Stout	722	45.8%	853	54.2%	1,575
UW-Superior	212	57.9%	154	42.1%	366
UW-Whitewater	1,044	47.7%	1,145	52.3%	2,189
UW Colleges	1,968	52.1%	1,808	47.9%	3,776
<b>Total</b>	<b>15,530</b>	<b>53.1%</b>	<b>13,730</b>	<b>46.9%</b>	<b>29,260</b>

Figure 1 shows the trend in new freshman enrollment by gender from fall 2005 to fall 2015. The gender gap between female and male students during the past ten years peaked in 2005 at 9.4 percentage points and had been declining between 2005 and 2010. The fall 2010 gender gap, 5.0 percentage points, was the smallest in the last decade. Female students have made up the majority of the UW System new freshman class since 1976.

**Figure 1  
UW System New Freshmen by Gender  
Fall 2005 to Fall 2015**



## Race and Ethnicity

In fall 2015, underrepresented minority (URM) students made up 13.7 percent (4,014) of the new freshman class. International students comprised 2.8 percent of fall 2015 new freshmen (Table 8). The proportion of URM new freshmen ranged from 7.3 percent at UW-Platteville to 30.3 percent at UW-Parkside. International students comprised 17.5 percent of new freshmen at UW-Superior and 8.0 percent at UW-Madison.

**Table 8**  
**UW System New Freshmen by Race/Ethnicity and Institution**  
**Fall 2015**

		MSN	MIL	EAU	GBY	LAC	OSH	PKS	PLT	RVF	STP	STO	SUP	WTW	UWC	Total
AA	#	127	222	29	16	23	58	59	30	26	84	38	7	70	155	944
	%	2.0%	6.7%	1.3%	2.0%	1.1%	3.7%	9.5%	1.9%	2.4%	4.7%	2.4%	1.9%	3.2%	4.1%	3.2%
HL	#	296	396	65	44	86	78	105	57	29	99	38	13	158	292	1,756
	%	4.7%	11.9%	2.9%	5.6%	4.2%	5.0%	16.9%	3.5%	2.7%	5.5%	2.4%	3.6%	7.2%	7.7%	6.0%
AI	#	13	7	1	5	4	7	1	1	1	11	3	4	4	27	89
	%	0.2%	0.2%	0.0%	0.6%	0.2%	0.4%	0.2%	0.1%	0.1%	0.6%	0.2%	1.1%	0.2%	0.7%	0.3%
SA	#	78	142	49	13	23	40	4	7	24	29	52	1	16	105	583
	%	1.2%	4.3%	2.2%	1.6%	1.1%	2.5%	0.6%	0.4%	2.3%	1.6%	3.3%	0.3%	0.7%	2.8%	2.0%
TMR-URM	#	115	119	26	20	32	34	19	24	30	49	24	10	63	77	642
	%	1.8%	3.6%	1.2%	2.5%	1.5%	2.2%	3.1%	1.5%	2.8%	2.7%	1.5%	2.7%	2.9%	2.0%	2.2%
<b>URM</b>	<b>#</b>	<b>629</b>	<b>886</b>	<b>170</b>	<b>98</b>	<b>168</b>	<b>217</b>	<b>188</b>	<b>119</b>	<b>110</b>	<b>272</b>	<b>155</b>	<b>35</b>	<b>311</b>	<b>656</b>	<b>4,014</b>
	<b>%</b>	<b>10.0%</b>	<b>26.7%</b>	<b>7.6%</b>	<b>12.4%</b>	<b>8.1%</b>	<b>13.8%</b>	<b>30.3%</b>	<b>7.3%</b>	<b>10.3%</b>	<b>15.2%</b>	<b>9.8%</b>	<b>9.6%</b>	<b>14.2%</b>	<b>17.4%</b>	<b>13.7%</b>
HPI	#	7	5	1	1		1				1		1	1	3	21
	%	0.1%	0.2%	0.0%	0.1%		0.1%				0.1%		0.3%	0.0%	0.1%	0.1%
OA	#	261	91	18	9	28	10	12	14	10	14	15	2	16	40	540
	%	4.2%	2.7%	0.8%	1.1%	1.4%	0.6%	1.9%	0.9%	0.9%	0.8%	1.0%	0.5%	0.7%	1.1%	1.8%
TMR-Non-URM	#	110	47	29	6	25	7	8	8	6	12	13	1	214	20	506
	%	1.8%	1.4%	1.3%	0.8%	1.2%	0.4%	1.3%	0.5%	0.6%	0.7%	0.8%	0.3%	9.8%	0.5%	1.7%
White	#	4,754	2,183	2,008	657	1,842	1,323	406	1,456	933	1,464	1,374	261	1,627	3,024	23,312
	%	75.8%	65.9%	89.7%	83.3%	88.9%	84.2%	65.5%	89.8%	87.5%	81.7%	87.2%	71.3%	74.3%	80.1%	79.7%
UNK	#	8	5	2		1	3		4	1		1	2	1	23	51
	%	0.1%	0.2%	0.1%		0.0%	0.2%		0.2%	0.1%		0.1%	0.5%	0.0%	0.6%	0.2%
INTL	#	500	98	11	18	7	11	6	20	6	29	17	64	19	10	816
	%	8.0%	3.0%	0.5%	2.3%	0.3%	0.7%	1.0%	1.2%	0.6%	1.6%	1.1%	17.5%	0.9%	0.3%	2.8%
<b>Total</b>	<b>#</b>	<b>6,269</b>	<b>3,315</b>	<b>2,239</b>	<b>789</b>	<b>2,071</b>	<b>1,572</b>	<b>620</b>	<b>1,621</b>	<b>1,066</b>	<b>1,792</b>	<b>1,575</b>	<b>366</b>	<b>2,189</b>	<b>3,776</b>	<b>29,260</b>
	<b>%</b>	<b>100%</b>	<b>100%</b>	<b>100%</b>	<b>100%</b>	<b>100%</b>	<b>100%</b>	<b>100%</b>	<b>100%</b>	<b>100%</b>	<b>100%</b>	<b>100%</b>	<b>100%</b>	<b>100%</b>	<b>100%</b>	<b>100%</b>

Note: Underrepresented minority (URM) students include those who indicated African American, American Indian, Hispanic/Latino(a), or Southeast Asian alone or in combination with other race/ethnicities.

AA (African American), HL (Hispanic/Latino(a)), AI (American Indian), SA (Southeast Asian), TMR-URM (Students identifying as two or more races, one of which is an underrepresented minority group), URM (Underrepresented Minority), HPI (Hawaiian/Pacific Islander), OA (Other Asian), TMR-Non-URM (Students identifying as two or more races, none of which is an underrepresented minority group), UNK (Students whose race/ethnicity is unknown), INTL (International Students).

The proportion of URM new freshmen continued to increase and was at a record high in fall 2015. Over the last decade, the proportion of URM new freshmen increased from 7.8 percent in fall 2005 to 13.7 percent in fall 2015. Among URM students, Hispanic/Latino(a) students were the largest group (1,756 or 6.0%), followed by African American students (944 or 3.2%). The number and proportion of international students more than doubled in ten years.

**Table 9**  
**UW System New Freshmen by Race/Ethnicity**  
**Fall 2005 to Fall 2015**

		2005	2006	2007	2008	2009	2010	2011	2012	2013	2014	2015
AA	#	865	903	1,005	911	906	920	967	866	900	979	944
	%	2.9%	3.1%	3.3%	3.0%	3.0%	3.0%	3.2%	2.9%	3.0%	3.4%	3.2%
HL	#	688	712	839	916	1,042	1,175	1,324	1,391	1,483	1,663	1,756
	%	2.3%	2.4%	2.7%	3.0%	3.4%	3.9%	4.4%	4.6%	5.0%	5.7%	6.0%
AI	#	233	207	256	206	127	120	111	107	104	90	89
	%	0.8%	0.7%	0.8%	0.7%	0.4%	0.4%	0.4%	0.4%	0.4%	0.3%	0.3%
SA	#	522	520	566	600	637	696	695	667	664	626	583
	%	1.8%	1.8%	1.8%	2.0%	2.1%	2.3%	2.3%	2.2%	2.2%	2.2%	2.0%
TMR-URM	#				234	391	458	524	530	592	584	642
	%				0	1.3%	1.5%	1.8%	1.8%	2.0%	2.0%	2.2%
<b>URM</b>	<b>#</b>	<b>2,308</b>	<b>2,342</b>	<b>2,666</b>	<b>2,867</b>	<b>3,103</b>	<b>3,369</b>	<b>3,621</b>	<b>3,561</b>	<b>3,743</b>	<b>3,942</b>	<b>4,014</b>
	<b>%</b>	<b>7.8%</b>	<b>8.0%</b>	<b>8.7%</b>	<b>9.5%</b>	<b>10.2%</b>	<b>11.1%</b>	<b>12.1%</b>	<b>11.9%</b>	<b>12.7%</b>	<b>13.5%</b>	<b>13.7%</b>
HPI	#				42	31	38	22	30	32	21	21
	%				0.1%	0.1%	0.1%	0.1%	0.1%	0.1%	0.1%	0.1%
OA	#	592	639	605	414	412	423	479	458	500	549	540
	%	2.0%	2.2%	2.0%	1.4%	1.4%	1.4%	1.6%	1.5%	1.7%	1.9%	1.8%
TMR-Non-URM	#				79	158	190	218	230	233	334	506
	%				0	0.5%	0.6%	0.7%	0.8%	0.8%	1.1%	1.7%
White	#	25,899	25,550	26,328	25,803	25,665	25,539	24,983	24,789	24,277	23,473	23,312
	%	87.4%	87.1%	85.9%	85.1%	84.6%	84.4%	83.6%	82.6%	82.2%	80.7%	79.7%
UNK	#	490	426	514	573	423	72	48	30	33	47	51
	%	1.7%	1.5%	1.7%	1.9%	1.4%	0.2%	0.2%	0.1%	0.1%	0.2%	0.2%
INTL	#	346	385	539	551	546	626	517	896	718	737	816
	%	1.2%	1.3%	1.8%	1.8%	1.8%	2.1%	1.7%	3.0%	2.4%	2.5%	2.8%
<b>Total</b>	<b>#</b>	<b>29,635</b>	<b>29,342</b>	<b>30,652</b>	<b>30,329</b>	<b>30,338</b>	<b>30,257</b>	<b>29,888</b>	<b>29,994</b>	<b>29,536</b>	<b>29,103</b>	<b>29,260</b>
	<b>%</b>	<b>100%</b>	<b>100%</b>	<b>100%</b>	<b>100%</b>	<b>100%</b>	<b>100%</b>	<b>100%</b>	<b>100%</b>	<b>100%</b>	<b>100%</b>	<b>100%</b>

Note: AA (African American), HL (Hispanic/Latino(a)), AI (American Indian), SA (Southeast Asian), TMR-URM (Students identifying as two or more races, one of which is an underrepresented minority group), URM (Underrepresented Minority), HPI (Hawaiian/Pacific Islander), OA (Other Asian), TMR-Non-URM (Students identifying as two or more races, none of which is an underrepresented minority group), UNK (Students whose race/ethnicity is unknown), INTL (International Students).

Beginning in fall 2008, new freshmen were able to specify more than one race/ethnicity. Also, Hawaiian/Pacific Islander was added as a separate race/ethnicity category; prior to 2008, these students were included in the Other Asian group.



## First-Generation College Students

Students are identified as first-generation college students if neither parent earned a four-year college/university degree. In fall 2015, 37.7 percent (11,038) of new freshmen were first-generation college students (Table 10). UW Colleges (2,170), UW-Milwaukee (1,486), and UW-Madison (967) enrolled the largest number of first-generation new freshmen. UW-Parkside had the highest proportion of first-generation college students (57.9%) in its new freshman class, followed by UW Colleges (57.5%), and UW-Green Bay (46.5%). UW-Madison had the lowest proportion of first-generation new freshmen (15.4%).

**Table 10**  
**UW System First-Generation New Freshmen by Resident Status and Institution**  
**Fall 2015**

	WI Resident		Non-Resident		Reciprocity		Total	
	#	% of WI Res	#	% of Non-Res	#	% of Recip	#	%
UW-Madison	729	20.2%	191	9.4%	47	7.6%	967	15.4%
UW-Milwaukee	1,337	46.9%	124	31.2%	25	36.2%	1,486	44.8%
UW-Eau Claire	529	35.6%	18	20.9%	155	23.2%	702	31.4%
UW-Green Bay	353	48.7%	13	24.5%	1	9.1%	367	46.5%
UW-La Crosse	578	33.8%	24	25.8%	67	25.1%	669	32.3%
UW-Oshkosh	653	46.1%	48	33.6%	5	45.5%	706	44.9%
UW-Parkside	300	58.5%	58	55.8%	1	33.3%	359	57.9%
UW-Platteville	522	43.2%	144	38.1%	13	36.1%	679	41.9%
UW-River Falls	263	49.6%	12	33.3%	200	40.0%	475	44.6%
UW-Stevens Point	744	48.9%	68	32.2%	16	27.1%	828	46.2%
UW-Stout	438	46.7%	23	27.4%	179	32.4%	640	40.6%
UW-Superior	69	53.1%	11	12.2%	65	44.5%	145	39.6%
UW-Whitewater	723	40.5%	117	30.2%	5	29.4%	845	38.6%
UW Colleges	2,084	58.0%	60	41.4%	26	70.3%	2,170	57.5%
<b>Total</b>	<b>9,322</b>	<b>42.3%</b>	<b>911</b>	<b>21.5%</b>	<b>805</b>	<b>26.9%</b>	<b>11,038</b>	<b>37.7%</b>

The UW System began to collect first-generation information for new students who enrolled in fall 2009. Over the last seven years, the proportion of new freshmen who were first-generation college students was highest at 43.5 percent in 2010 and lowest at 37.7 percent in 2015 (Table 11). In fall 2015, first-generation new freshmen comprised 42.3 percent of all Wisconsin resident new freshmen. The proportion was 21.5 percent for non-residents and 26.9 percent for Minnesota or Michigan reciprocity students.

**Table 11**  
**UW System First-Generation New Freshmen by Resident Status and Institution**  
**Fall 2009 to Fall 2015**

	WI Resident		Non-Resident		Reciprocity		Total	
	#	% of WI Res	#	% of Non-Res	#	% of Recip	#	%
2009	11,587	47.2%	545	19.4%	873	29.2%	13,005	42.9%
2010	11,642	48.2%	602	19.4%	904	30.1%	13,148	43.5%
2011	11,336	47.8%	677	22.0%	948	30.8%	12,961	43.4%
2012	10,472	45.4%	777	20.3%	898	29.0%	12,147	40.5%
2013	10,233	45.0%	826	21.7%	849	28.5%	11,908	40.3%
2014	9,884	44.3%	905	23.3%	797	27.3%	11,586	39.8%
2015	9,322	42.3%	911	21.5%	805	26.9%	11,038	37.7%

**Age**

UW System new freshmen age 19 and under made up the majority of new freshmen at 96.5 percent. The percentage of new freshmen age 20 and over was 3.5 percent for the UW System as a whole and ranged from 0.6 percent at UW-Eau Claire and UW-La Crosse to 11.7 percent at UW-Superior (Table 12).

**Table 12  
UW System New Freshmen by Age Group and Institution  
Fall 2015**

	19 and Under		20 to 24		25 to 34		35 and Over		Total
	#	%	#	%	#	%	#	%	#
UW-Madison	6,227	99.3%	41	0.7%	1	0.0%	0	0.0%	6,269
UW-Milwaukee	3,132	94.5%	142	4.3%	34	1.0%	7	0.2%	3,315
UW-Eau Claire	2,226	99.4%	12	0.5%	1	0.0%	0	0.0%	2,239
UW-Green Bay	768	97.3%	19	2.4%	1	0.1%	1	0.1%	789
UW-La Crosse	2,058	99.4%	12	0.6%	1	0.0%	0	0.0%	2,071
UW-Oshkosh	1,529	97.3%	32	2.0%	8	0.5%	3	0.2%	1,572
UW-Parkside	582	93.9%	26	4.2%	9	1.5%	3	0.5%	620
UW-Platteville	1,586	97.8%	24	1.5%	9	0.6%	2	0.1%	1,621
UW-River Falls	1,033	96.9%	27	2.5%	5	0.5%	1	0.1%	1,066
UW-Stevens Point	1,739	97.0%	44	2.5%	8	0.4%	1	0.1%	1,792
UW-Stout	1,517	96.3%	47	3.0%	10	0.6%	1	0.1%	1,575
UW-Superior	323	88.3%	38	10.4%	3	0.8%	2	0.5%	366
UW-Whitewater	2,159	98.6%	21	1.0%	7	0.3%	2	0.1%	2,189
UW Colleges	3,345	88.6%	316	8.4%	78	2.1%	37	1.0%	3,776
<b>Total</b>	<b>28,224</b>	<b>96.5%</b>	<b>801</b>	<b>2.7%</b>	<b>175</b>	<b>0.6%</b>	<b>60</b>	<b>0.2%</b>	<b>29,260</b>

The proportion of UW System new freshmen age 19 and under fluctuated little between 94.7 percent and 96.5 percent over the last ten years. The proportion of new freshmen age 20 and over has been stable between 3.5 to 5.3 percent (Table 13).

**Table 13  
UW System New Freshmen by Age Group  
Fall 2005 to Fall 2015**

	19 and Under		20 to 24		25 to 34		35 and Over		Total
	#	%	#	%	#	%	#	%	#
2005	28,316	95.5%	881	3.0%	282	1.0%	156	0.5%	29,635
2006	28,002	95.4%	886	3.0%	302	1.0%	152	0.5%	29,342
2007	29,196	95.2%	914	3.0%	373	1.2%	169	0.6%	30,652
2008	29,015	95.7%	808	2.7%	361	1.2%	145	0.5%	30,329
2009	28,846	95.1%	902	3.0%	402	1.3%	188	0.6%	30,338
2010	28,641	94.7%	1,026	3.4%	424	1.4%	166	0.5%	30,257
2011	28,390	95.0%	906	3.0%	401	1.3%	191	0.6%	29,888
2012	28,556	95.2%	903	3.0%	357	1.2%	178	0.6%	29,994
2013	28,344	96.0%	803	2.7%	270	0.9%	119	0.4%	29,536
2014	27,895	95.8%	884	3.0%	245	0.8%	79	0.3%	29,103
2015	28,224	96.5%	801	2.7%	175	0.6%	60	0.2%	29,260

## Full-Time Status

The vast majority of UW new freshmen in fall 2015 (96.8%) were full-time students with a credit load of 12 or more credits (Table 14). UW Colleges had the highest proportion of part-time new freshmen (18.2%), followed by UW-Parkside (6.0%). UW-La Crosse had the lowest proportion of part-time new freshmen (0.1%).

**Table 14**  
**UW System New Freshmen by Full-Time/Part-Time Status and Institution**  
**Fall 2015**

	Full-Time		Part-Time		Total
	#	%	#	%	#
UW-Madison	6,258	99.8%	11	0.2%	6,269
UW-Milwaukee	3,261	98.4%	54	1.6%	3,315
UW-Eau Claire	2,235	99.8%	4	0.2%	2,239
UW-Green Bay	760	96.3%	29	3.7%	789
UW-La Crosse	2,068	99.9%	3	0.1%	2,071
UW-Oshkosh	1,553	98.8%	19	1.2%	1,572
UW-Parkside	583	94.0%	37	6.0%	620
UW-Platteville	1,608	99.2%	13	0.8%	1,621
UW-River Falls	1,047	98.2%	19	1.8%	1,066
UW-Stevens Point	1,762	98.3%	30	1.7%	1,792
UW-Stout	1,555	98.7%	20	1.3%	1,575
UW-Superior	356	97.3%	10	2.7%	366
UW-Whitewater	2,179	99.5%	10	0.5%	2,189
UW Colleges	3,090	81.8%	686	18.2%	3,776
<b>Total</b>	<b>28,315</b>	<b>96.8%</b>	<b>945</b>	<b>3.2%</b>	<b>29,260</b>

The percentage of UW System full-time new freshmen remained steady over the past ten years (Table 15). The proportion of full-time new freshmen in fall 2009, 97.2 percent, was the highest in the past ten years, while the lowest proportion of this group for the past ten years was 96.5 percent in 2011.

**Table 15**  
**UW System New Freshmen by Full-Time/Part-Time Status**  
**Fall 2005 to Fall 2015**

	Full-Time		Part-Time		Total
	#	%	#	%	#
2005	28,713	96.9%	922	3.1%	29,635
2006	28,401	96.8%	941	3.2%	29,342
2007	29,641	96.7%	1,011	3.3%	30,652
2008	29,371	96.8%	958	3.2%	30,329
2009	29,479	97.2%	859	2.8%	30,338
2010	29,259	96.7%	998	3.3%	30,257
2011	28,854	96.5%	1,034	3.5%	29,888
2012	28,989	96.6%	1,005	3.4%	29,994
2013	28,656	97.0%	880	3.0%	29,536
2014	28,177	96.8%	926	3.2%	29,103
2015	28,315	96.8%	945	3.2%	29,260

## EDUCATIONAL PREPARATION

### ACT Scores

Table 16 shows the average ACT composite scores of new freshmen by UW institution from fall 2005 to fall 2015. The average ACT composite score of fall 2015 new freshmen ranged from 28.7 at UW-Madison to 20.6 at UW Colleges. Of the 2,008 (6.9%) UW System new freshmen who did not provide an ACT score, 1,031 (3.5%) instead provided SAT scores. 453 (1.5%) students provided both ACT and SAT scores.

The UW System new freshman average ACT composite score of 23.7 is 2.7 test points higher than the national average of 21.0. Since 2005 the average ACT composite score of UW System new freshmen has ranged from 2.0 to 2.7 test points above the national average. In fall 2015, 67.2 percent of UW System new freshmen scored above the national average.

**Table 16**  
**UW System New Freshman Average ACT Composite Score by Institution**  
**and National Average ACT Composite Score**  
**Fall 2005 to Fall 2015**

	2005	2006	2007	2008	2009	2010	2011	2012	2013	2014	2015
UW-Madison	27.5	27.5	27.9	28.1	28.2	28.3	28.3	28.3	28.1	28.5	28.7
UW-Milwaukee	21.9	22.0	22.0	22.1	21.9	21.9	21.9	22.1	21.9	21.9	22.2
UW-Eau Claire	24.4	24.3	24.5	24.6	24.5	24.4	24.3	24.3	24.1	24.0	24.0
UW-Green Bay	22.8	22.6	22.5	22.5	22.4	22.9	22.9	22.6	22.9	22.7	23.1
UW-La Crosse	24.7	24.6	24.7	24.9	24.9	24.7	24.7	24.7	24.6	24.7	24.7
UW-Oshkosh	22.4	22.2	22.5	22.4	22.2	22.4	22.4	22.3	22.5	22.3	22.2
UW-Parkside	20.0	19.8	20.2	20.1	20.5	20.8	20.8	21.3	21.1	21.2	20.8
UW-Platteville	22.4	22.1	22.2	22.3	22.5	22.8	22.8	22.8	23.2	23.4	23.3
UW-River Falls	22.2	21.8	21.9	22.2	22.0	22.3	22.3	22.5	22.4	22.6	22.4
UW-Stevens Point	22.7	22.7	22.8	23.0	23.2	23.3	23.3	23.3	22.8	22.8	22.4
UW-Stout	21.3	21.2	21.4	21.2	21.6	21.8	21.8	22.1	22.1	22.4	22.2
UW-Superior	22.2	22.0	22.0	21.8	22.0	22.0	22.1	21.6	22.0	21.5	21.3
UW-Whitewater	22.1	22.2	22.2	22.0	22.4	22.3	22.3	22.1	22.2	22.5	22.6
UW Colleges	20.3	20.4	20.4	20.5	20.5	20.5	20.5	20.6	20.7	20.5	20.6
UW System	23.2	23.1	23.2	23.3	23.3	23.5	23.5	23.6	23.6	23.7	23.7
National Average	20.9	21.1	21.2	21.1	21.1	21.0	21.1	21.1	20.9	21.0	21.0

Note: Excludes students who did not provide an ACT score.

## High School Rank

In fall 2015, 42.2 percent of UW System new freshmen graduated from high school in the top 25 percent of their high school class (Table 17). About three fourths (75.5%) of new freshmen graduated in the top half of their high school class. See Appendix F for new freshman average high school percentile rank by UW institution from fall 1976 to fall 2015.

**Table 17**  
**UW System New Freshmen by High School Rank and Institution**  
**Fall 2015**

	Top Quartile		2nd Quartile		Top Half		3rd Quartile		Bottom Quartile	
	#	%	#	%	#	%	#	%	#	%
UW-Madison	2,690	90.5%	264	8.9%	2,954	99.4%	12	0.4%	5	0.2%
UW-Milwaukee	586	27.3%	816	38.0%	1,402	65.2%	626	29.1%	122	5.7%
UW-Eau Claire	784	48.4%	685	42.3%	1,469	90.6%	152	9.4%	0	0.0%
UW-La Crosse	912	60.9%	534	35.6%	1,446	96.5%	51	3.4%	1	0.1%
UW-Oshkosh	364	30.9%	522	44.3%	886	75.1%	277	23.5%	16	1.4%
UW-Parkside	181	36.3%	179	35.9%	360	72.3%	111	22.3%	27	5.4%
UW-Platteville	450	37.4%	463	38.5%	913	75.9%	235	19.5%	55	4.6%
UW-River Falls	279	34.1%	293	35.8%	572	69.9%	214	26.2%	32	3.9%
UW-Stevens Point	403	32.9%	479	39.1%	882	72.0%	296	24.2%	47	3.8%
UW-Stout	329	29.0%	440	38.7%	769	67.7%	339	29.8%	28	2.5%
UW-Superior	48	21.3%	85	37.8%	133	59.1%	62	27.6%	30	13.3%
UW-Whitewater	479	30.6%	680	43.5%	1,159	74.2%	359	23.0%	45	2.9%
UW Colleges	474	16.9%	833	29.8%	1,307	46.7%	941	33.6%	552	19.7%
<b>Total</b>	<b>7,979</b>	<b>42.2%</b>	<b>6,273</b>	<b>33.2%</b>	<b>14,252</b>	<b>75.5%</b>	<b>3,675</b>	<b>19.5%</b>	<b>960</b>	<b>5.1%</b>

Note: Excludes students for whom a high school rank was not provided. High school rank information is not shown for UW-Green Bay since it does not collect high school rank from applicants.

The percentage of UW System new freshmen graduating in the top 25 percent of their high school class was the lowest in fall 2015 over the last decade (Table 18). For UW institutions that collect high school rank, the proportion of new freshmen for whom a high school rank was not provided increased from 12.8 percent in fall 2005 to 33.7 percent in fall 2015; this proportion ranged from 19.7 percent at UW-Parkside to 52.6 percent at UW-Madison in fall 2015.

**Table 18**  
**UW System New Freshmen by High School Rank**  
**Fall 2005 to Fall 2015**

	Top Quartile		2nd Quartile		Top Half		3rd Quartile		Bottom Quartile		Total
	#	%	#	%	#	%	#	%	#	%	#
2005	11,426	45.6%	8,264	33.0%	19,690	78.7%	4,286	17.1%	1,057	4.2%	25,033
2006	10,943	45.1%	8,157	33.6%	19,100	78.7%	4,191	17.3%	985	4.1%	24,276
2007	11,125	44.5%	8,294	33.2%	19,419	77.7%	4,358	17.4%	1,205	4.8%	24,982
2008	10,873	44.4%	8,218	33.6%	19,091	78.0%	4,308	17.6%	1,088	4.4%	24,487
2009	10,707	44.3%	8,146	33.7%	18,853	78.0%	4,188	17.3%	1,116	4.6%	24,157
2010	10,354	44.1%	7,784	33.2%	18,138	77.3%	4,193	17.9%	1,138	4.8%	23,469
2011	9,895	44.8%	7,311	33.1%	17,206	78.0%	3,814	17.3%	1,044	4.7%	22,064
2012	9,490	45.4%	6,778	32.4%	16,268	77.9%	3,713	17.8%	910	4.4%	20,891
2013	8,531	43.9%	6,393	32.9%	14,924	76.8%	3,606	18.6%	909	4.7%	19,439
2014	8,475	42.9%	6,569	33.2%	15,044	76.1%	3,731	18.9%	993	5.0%	19,768
2015	7,979	42.2%	6,273	33.2%	14,252	75.5%	3,675	19.5%	960	5.1%	18,887

Note: Excludes students for whom a high school rank was not provided.

## Class Standing

Many new freshmen enter a UW institution with Advanced Placement credits, with credits earned through the institution's placement testing process, or with college credits they earned while in high school. Some new freshmen have sufficient credits from these sources to qualify for sophomore or higher class standing. In fall 2015, the majority of UW System new freshmen (92.7%) enrolled with a class standing of freshman, while 7.3 percent entered with a sophomore or higher class standing (Table 19). UW-Madison had the largest proportion of new freshmen who entered with a sophomore or higher class standing (26.6%).

**Table 19**  
**UW System New Freshmen by Class Standing and Institution**  
**Fall 2015**

	Freshman Standing		Sophomore or Higher Class Standing		Total #
	#	%	#	%	
UW-Madison	4,602	73.4%	1,667	26.6%	6,269
UW-Milwaukee	3,257	98.3%	58	1.7%	3,315
UW-Eau Claire	2,149	96.0%	90	4.0%	2,239
UW-Green Bay	746	94.6%	43	5.4%	789
UW-La Crosse	2,024	97.7%	47	2.3%	2,071
UW-Oshkosh	1,551	98.7%	21	1.3%	1,572
UW-Parkside	611	98.5%	9	1.5%	620
UW-Platteville	1,590	98.1%	31	1.9%	1,621
UW-River Falls	1,033	96.9%	33	3.1%	1,066
UW-Stevens Point	1,766	98.5%	26	1.5%	1,792
UW-Stout	1,540	97.8%	35	2.2%	1,575
UW-Superior	341	93.2%	25	6.8%	366
UW-Whitewater	2,140	97.8%	49	2.2%	2,189
UW Colleges	3,760	99.6%	16	0.4%	3,776
<b>Total</b>	<b>27,110</b>	<b>92.7%</b>	<b>2,150</b>	<b>7.3%</b>	<b>29,260</b>

Note: Class standing is based on the total number of degree credits; its requirements vary by UW institution.

The proportion of UW System new freshmen who enrolled with a sophomore or higher class standing has been increasing since 2005 (Table 20). In fall 2005, 2.2 percent of UW System new freshmen entered with a sophomore or higher class standing while this proportion was 7.3 percent in fall 2015.

**Table 20**  
**UW System New Freshmen by Class Standing**  
**Fall 2005 to Fall 2015**

	Freshman Standing		Sophomore or Higher Class Standing		Total #
	#	%	#	%	
2005	28,981	97.8%	654	2.2%	29,635
2006	28,666	97.7%	676	2.3%	29,342
2007	29,872	97.5%	780	2.5%	30,652
2008	29,439	97.1%	890	2.9%	30,329
2009	29,373	96.8%	965	3.2%	30,338
2010	29,161	96.4%	1,096	3.6%	30,257
2011	28,636	95.8%	1,252	4.2%	29,888
2012	28,518	95.1%	1,476	4.9%	29,994
2013	27,966	94.7%	1,570	5.3%	29,536
2014	27,258	93.7%	1,845	6.3%	29,103
2015	27,110	92.7%	2,150	7.3%	29,260

## Remediation

Table 21 shows the proportion of fall 2015 new freshmen who were placed into math or English remediation. In fall 2015, 17.5 percent of UW new freshmen were placed into math remediation and 6.1 percent were placed into English remediation. UW-Parkside had the highest proportion of its new freshmen requiring math remediation (44.4%) while UW-Superior had the highest proportion of its new freshmen requiring English remediation (28.1%).

**Table 21**  
**UW System New Freshmen Placed into Math/English Remediation by Institution**  
**Fall 2015**

	Placed into Math Remediation		Placed into English Remediation	
	#	%	#	%
UW-Madison	5	0.1%	N/A	N/A
UW-Milwaukee	994	30.0%	141	4.3%
UW-Eau Claire	301	13.4%	N/A	N/A
UW-Green Bay	106	13.4%	59	7.5%
UW-La Crosse	55	2.7%	29	1.4%
UW-Oshkosh	689	43.8%	102	6.5%
UW-Parkside	275	44.4%	N/A	N/A
UW-Platteville	558	34.4%	153	9.4%
UW-River Falls	48	4.5%	31	2.9%
UW-Stevens Point	206	11.5%	N/A	N/A
UW-Stout	40	2.5%	225	14.3%
UW-Superior	141	38.5%	103	28.1%
UW-Whitewater	442	20.2%	126	5.8%
UW Colleges	1,266	33.5%	823	21.8%
<b>Total</b>	<b>5,126</b>	<b>17.5%</b>	<b>1,792</b>	<b>6.1%</b>

Note: Remediation requirements vary by UW institution. UW-Madison, UW-Eau Claire, UW-Parkside, and UW-Stevens Point do not identify students needing English remediation and do not offer courses that are specifically intended for remedial English.

The proportion of UW new freshmen placed into math remediation increased from 17.0 percent in 2005 to 21.6 percent in 2008 (Table 22). In the last seven years, this proportion has declined every year to 17.5 percent in 2015. The proportion of UW new freshmen placed into English remediation has been declining for three consecutive years and was 6.1 percent in fall 2015.

**Table 22**  
**UW System New Freshmen Placed into Math/English Remediation**  
**Fall 2005 to Fall 2015**

	Placed into Math Remediation		Placed into English Remediation	
	#	%	#	%
2005	5,030	17.0%	2,316	7.8%
2006	5,377	18.3%	1,891	6.4%
2007	6,525	21.3%	2,062	6.7%
2008	6,547	21.6%	2,512	8.3%
2009	6,517	21.5%	2,624	8.6%
2010	6,438	21.3%	2,388	7.9%
2011	6,263	21.0%	2,347	7.9%
2012	6,221	20.7%	2,965	9.9%
2013	6,082	20.6%	2,725	9.2%
2014	5,478	18.8%	2,438	8.4%
2015	5,126	17.5%	1,792	6.1%

Note: Remediation requirements may have changed at some UW institutions over the past ten years.

**Appendix A**  
**UW System New Freshman Applicants, Admissions, and Enrollment**  
**by Resident Status, Fall 2005 to Fall 2015**

		2005	2006	2007	2008	2009	2010	2011	2012	2013	2014	2015
# Applicants	WI Resident	36,037	35,778	37,025	36,670	39,759	36,799	37,015	35,670	34,677	33,862	34,025
	Non-Resident	12,822	14,160	16,190	17,169	18,048	18,370	21,826	23,063	25,773	25,922	28,494
	Reciprocity	7,543	7,807	8,072	7,987	8,632	8,423	8,519	8,309	8,271	7,812	8,752
	Total	56,402	57,745	61,287	61,826	66,439	63,592	67,360	67,042	68,721	67,596	71,271
# with Completed Applications	WI Resident	33,977	33,616	34,773	34,342	35,830	33,593	33,363	32,526	31,532	31,178	31,307
	Non-Resident	11,323	12,303	14,188	14,835	14,723	14,736	15,711	17,880	19,762	20,654	23,114
	Reciprocity	7,157	7,282	7,610	7,454	7,853	7,686	7,245	7,326	7,309	7,047	7,730
	Total	52,457	53,201	56,571	56,631	58,406	56,015	56,319	57,732	58,603	58,879	62,151
# Admitted	WI Resident	32,190	31,799	32,813	32,301	33,117	31,366	31,084	30,295	29,642	29,304	29,143
	Non-Resident	9,352	8,822	9,879	9,236	10,184	10,323	10,882	12,452	12,425	11,877	14,302
	Reciprocity	5,704	5,583	5,926	5,867	6,086	6,124	6,061	5,820	5,802	5,549	6,082
	Total	47,246	46,204	48,618	47,404	49,387	47,813	48,027	48,567	47,869	46,730	49,527
% Admitted	WI Resident	94.7%	94.6%	94.4%	94.1%	92.4%	93.4%	93.2%	93.1%	94.0%	94.0%	93.1%
	Non-Resident	82.6%	71.7%	69.6%	62.3%	69.2%	70.1%	69.3%	69.6%	62.9%	57.5%	61.9%
	Reciprocity	79.7%	76.7%	77.9%	78.7%	77.5%	79.7%	83.7%	79.4%	79.4%	78.7%	78.7%
	Total	90.1%	86.8%	85.9%	83.7%	84.6%	85.4%	85.3%	84.1%	81.7%	79.4%	79.7%
# Enrolled	WI Resident	24,187	23,976	24,732	24,542	24,531	24,149	23,734	23,076	22,747	22,289	22,019
	Non-Resident	2,537	2,567	3,070	2,870	2,848	3,130	3,112	3,855	3,845	3,933	4,281
	Reciprocity	2,911	2,799	2,850	2,917	2,959	2,978	3,042	3,063	2,944	2,881	2,960
	Total	29,635	29,342	30,652	30,329	30,338	30,257	29,888	29,994	29,536	29,103	29,260
% Enrolled	WI Resident	75.1%	75.4%	75.4%	76.0%	74.1%	77.0%	76.4%	76.2%	76.7%	76.1%	75.6%
	Non-Resident	27.1%	29.1%	31.1%	31.1%	28.0%	30.3%	28.6%	31.0%	30.9%	33.1%	29.9%
	Reciprocity	51.0%	50.1%	48.1%	49.7%	48.6%	48.6%	50.2%	52.6%	50.7%	51.9%	48.7%
	Total	62.7%	63.5%	63.0%	64.0%	61.4%	63.3%	62.2%	61.8%	61.7%	62.3%	59.1%

Note: The admission rate is based on completed applications.  
 Reciprocity includes Minnesota reciprocity students.



**Appendix B**  
**UW System New Freshman Applications, Admissions, and Enrollment**  
**by Resident Status and Institution, Fall 2015**

		MSN	MIL	EAU	GBY	LAC	OSH	PKS	PLT	RVF	STP	STO	SUP	WTW	UWC
# Applications	WI Resident	8,471	7,878	3,862	2,390	5,093	4,980	1,512	2,885	1,335	3,992	1,966	513	5,521	6,282
	Non-Resident	20,967	2,270	519	341	525	640	548	1317	123	724	287	302	1641	383
	Reciprocity	3,349	274	1,958	52	1,114	50	9	107	1,480	175	1,272	433	73	22
	Total	32,787	10,422	6,339	2,783	6,732	5,670	2,069	4,309	2,938	4,891	3,525	1,248	7,235	6,687
# Completed Applications	WI Resident	7,744	6,839	3,648	1,918	4,646	4,219	1,270	2,467	1,153	3,620	1,806	432	4,724	5,133
	Non-Resident	17,423	1,701	353	188	409	490	385	979	85	596	217	214	1295	268
	Reciprocity	2,840	218	1,805	31	996	46	7	85	1,238	165	1,172	360	63	13
	Total	28,007	8,758	5,806	2,137	6,051	4,755	1,662	3,531	2,476	4,381	3,195	1,006	6,082	5,414
# Admitted	WI Resident	5,685	5,850	3,175	1,632	3,772	3,427	1,051	2,325	1,028	3,248	1,684	408	3,759	5,124
	Non-Resident	8,980	1,469	245	153	304	409	298	922	78	540	200	211	1088	266
	Reciprocity	1,469	194	1,527	25	765	39	7	83	1,117	158	1,089	327	49	13
	Total	16,134	7,513	4,947	1,810	4,841	3,875	1,356	3,330	2,223	3,946	2,973	946	4,896	5,403
% Admitted	WI Resident	73%	86%	87%	85%	81%	81%	83%	94%	89%	90%	93%	94%	80%	100%
	Non-Resident	52%	86%	69%	81%	74%	83%	77%	94%	92%	91%	92%	99%	84%	99%
	Reciprocity	52%	89%	85%	81%	77%	85%	100%	98%	90%	96%	93%	91%	78%	100%
	Total	58%	86%	85%	85%	80%	81%	82%	94%	90%	90%	93%	94%	80%	100%
% Enrolled	WI Resident	64%	49%	47%	44%	45%	41%	49%	52%	52%	47%	56%	32%	47%	70%
	Non-Resident	23%	27%	35%	35%	31%	35%	35%	41%	46%	39%	42%	43%	36%	67%
	Reciprocity	42%	36%	44%	44%	35%	28%	43%	43%	45%	37%	51%	45%	35%	23%
	Total	39%	44%	45%	44%	43%	41%	46%	49%	48%	45%	53%	39%	45%	70%

Note: Reciprocity includes Minnesota reciprocity students.  
Applications and admissions include students who applied and/or were admitted to multiple UW institutions.  
The admission rate is based on completed applications.

**Appendix C**  
**UW System New Freshman Applications, Admissions, and Enrollment**  
**by Gender and Institution, Fall 2015**

		MSN	MIL	EAU	GBY	LAC	OSH	PKS	PLT	RVF	STP	STO	SUP	WTW	UWC
# Applications	Female	16,369	5,722	3,973	1,839	4,108	3,344	1,186	1,554	1,787	2,664	1,694	734	3,666	3,670
	Male	16,418	4,700	2,366	944	2,624	2,326	883	2,755	1,151	2,227	1,831	514	3,569	3,017
	Total	32,787	10,422	6,339	2,783	6,732	5,670	2,069	4,309	2,938	4,891	3,525	1,248	7,235	6,687
# Completed Applications	Female	14,151	4,840	3,668	1,438	3,723	2,812	952	1,239	1,509	2,394	1,531	599	3,107	2,940
	Male	13,856	3,918	2,138	699	2,328	1,943	710	2,292	967	1,987	1,664	407	2,975	2,474
	Total	28,007	8,758	5,806	2,137	6,051	4,755	1,662	3,531	2,476	4,381	3,195	1,006	6,082	5,414
# Admitted	Female	8,670	4,253	3,226	1,249	3,089	2,330	794	1,141	1,391	2,163	1,445	566	2,540	2,935
	Male	7,464	3,260	1,721	561	1,752	1,545	562	2,189	832	1,783	1,528	380	2,356	2,468
	Total	16,134	7,513	4,947	1,810	4,841	3,875	1,356	3,330	2,223	3,946	2,973	946	4,896	5,403
% Admitted	Female	61%	88%	88%	87%	83%	83%	83%	92%	92%	90%	94%	94%	82%	100%
	Male	54%	83%	80%	80%	75%	80%	79%	96%	86%	90%	92%	93%	79%	100%
	Total	58%	86%	85%	85%	80%	81%	82%	94%	90%	90%	93%	94%	80%	100%
% Enrolled	Female	37%	41%	44%	43%	40%	40%	43%	45%	48%	43%	50%	37%	41%	67%
	Male	41%	48%	47%	46%	47%	42%	49%	50%	48%	49%	56%	41%	49%	73%
	Total	39%	44%	45%	44%	43%	41%	46%	49%	48%	45%	53%	39%	45%	70%

Note: Applications and admissions include students who applied and/or were admitted to multiple UW institutions.  
The admission rate is based on completed applications.

**Appendix D**  
**UW System New Freshman Applications, Admissions, and Enrollment**  
**by Race/Ethnicity and Institution, Fall 2015**

		MSN	MIL	EAU	GBY	LAC	OSH	PKS	PLT	RVF	STP	STO	SUP	WTW	UWC
<b># Applications</b>	AA	1,041	1,424	215	199	162	490	454	294	159	460	167	69	745	687
	HL	2,129	1,358	271	215	285	402	376	239	139	399	154	49	640	603
	AI	53	38	19	30	18	23	5	8	8	30	14	18	15	46
	SA	344	401	192	85	99	185	40	40	140	134	143	17	92	234
	TMR-URM	503	414	119	93	132	175	94	99	93	125	81	41	262	179
	<b>URM</b>	<b>4,070</b>	<b>3,635</b>	<b>816</b>	<b>622</b>	<b>696</b>	<b>1,275</b>	<b>969</b>	<b>680</b>	<b>539</b>	<b>1,148</b>	<b>559</b>	<b>194</b>	<b>1,754</b>	<b>1,749</b>
	HPI	46	12	6	3	2	5	1	2	1	3	2	3	11	7
	OA	2,240	271	93	25	86	70	41	46	50	64	35	7	81	88
	TMR-Non-URM	586	118	64	18	71	38	20	28	13	37	23	5	532	39
	White	20,048	5,932	5,309	2,063	5,828	4,216	1,001	3,462	2,290	3,566	2,837	839	4,785	4,736
	Unknown	76	17	9	3	4	7	0	21	8	1	4	4	4	47
	International	5,721	437	42	49	45	59	37	70	37	72	65	196	68	21
	<b>Total</b>	<b>32,787</b>	<b>10,422</b>	<b>6,339</b>	<b>2,783</b>	<b>6,732</b>	<b>5,670</b>	<b>2,069</b>	<b>4,309</b>	<b>2,938</b>	<b>4,891</b>	<b>3,525</b>	<b>1,248</b>	<b>7,235</b>	<b>6,687</b>
<b># Completed Applications</b>	AA	730	988	155	76	81	339	304	150	113	352	125	45	498	402
	HL	1,750	1,132	225	139	218	304	305	172	95	340	125	39	506	456
	AI	40	27	12	15	13	17	4	7	6	25	11	12	14	34
	SA	287	351	168	52	70	149	33	27	110	112	127	14	64	194
	TMR-URM	423	328	91	64	109	131	72	71	65	105	62	28	202	120
	<b>URM</b>	<b>3,230</b>	<b>2,826</b>	<b>651</b>	<b>346</b>	<b>491</b>	<b>940</b>	<b>718</b>	<b>427</b>	<b>389</b>	<b>934</b>	<b>450</b>	<b>138</b>	<b>1,284</b>	<b>1,206</b>
	HPI	32	10	5	2	2	2	0	0	0	2	2	2	10	5
	OA	1,892	246	81	18	79	52	36	37	45	57	35	6	70	73
	TMR-Non-URM	497	108	59	14	64	32	19	24	12	34	20	4	491	29
	White	17,626	5,369	4,982	1,732	5,392	3,683	867	3,005	2,002	3,284	2,639	714	4,185	4,056
	Unknown	62	14	7	2	3	4	0	11	8	1	4	2	4	34
	International	4,668	185	21	23	20	42	22	27	20	69	45	140	38	11
	<b>Total</b>	<b>28,007</b>	<b>8,758</b>	<b>5,806</b>	<b>2,137</b>	<b>6,051</b>	<b>4,755</b>	<b>1,662</b>	<b>3,531</b>	<b>2,476</b>	<b>4,381</b>	<b>3,195</b>	<b>1,006</b>	<b>6,082</b>	<b>5,414</b>
<b># Admitted</b>	AA	318	567	76	44	52	173	170	101	82	221	89	40	211	397
	HL	912	889	175	106	179	225	243	156	75	287	108	32	370	456
	AI	22	21	5	7	9	12	2	6	1	17	5	9	11	34
	SA	161	292	122	38	49	113	26	25	101	81	114	13	46	194
	TMR-URM	229	253	67	48	86	89	54	60	54	87	53	27	134	119
	<b>URM</b>	<b>1,642</b>	<b>2,022</b>	<b>445</b>	<b>243</b>	<b>375</b>	<b>612</b>	<b>495</b>	<b>348</b>	<b>313</b>	<b>693</b>	<b>369</b>	<b>121</b>	<b>772</b>	<b>1,200</b>
	HPI	15	8	4	1	2	1	0	0	0	2	1	2	7	5
	OA	1,158	208	72	16	68	42	29	33	43	54	34	5	56	73
	TMR-Non-URM	317	100	54	12	55	27	18	23	9	34	19	4	457	29
	White	10,904	4,991	4,348	1,513	4,321	3,151	795	2,890	1,830	3,094	2,504	673	3,563	4,051
	Unknown	38	14	5	2	2	3	0	10	8	0	3	2	3	34
	International	2,060	170	19	23	18	39	19	26	20	69	43	139	38	11
	<b>Total</b>	<b>16,134</b>	<b>7,513</b>	<b>4,947</b>	<b>1,810</b>	<b>4,841</b>	<b>3,875</b>	<b>1,356</b>	<b>3,330</b>	<b>2,223</b>	<b>3,946</b>	<b>2,973</b>	<b>946</b>	<b>4,896</b>	<b>5,403</b>

**Appendix D (Continued)**  
**UW System New Freshman Applications, Admissions, and Enrollment**  
**by Race/Ethnicity and Institution, Fall 2015**

		MSN	MIL	EAU	GBY	LAC	OSH	PKS	PLT	RVF	STP	STO	SUP	WTW	UWC
<b>% Admitted</b>	AA	44%	57%	49%	58%	64%	51%	56%	67%	73%	63%	71%	89%	42%	99%
	HL	52%	79%	78%	76%	82%	74%	80%	91%	79%	84%	86%	82%	73%	100%
	AI	55%	78%	42%	47%	69%	71%	50%	86%	17%	68%	45%	75%	79%	100%
	SA	56%	83%	73%	73%	70%	76%	79%	93%	92%	72%	90%	93%	72%	100%
	TMR-URM	54%	77%	74%	75%	79%	68%	75%	85%	83%	83%	85%	96%	66%	99%
	<b>URM</b>	<b>51%</b>	<b>72%</b>	<b>68%</b>	<b>70%</b>	<b>76%</b>	<b>65%</b>	<b>69%</b>	<b>81%</b>	<b>80%</b>	<b>74%</b>	<b>82%</b>	<b>88%</b>	<b>60%</b>	<b>100%</b>
	HPI	47%	80%	80%	50%	100%	50%	-	-	-	100%	50%	100%	70%	100%
	OA	61%	85%	89%	89%	86%	81%	81%	89%	96%	95%	97%	83%	80%	100%
	TMR-Non-URM	64%	93%	92%	86%	86%	84%	95%	96%	75%	100%	95%	100%	93%	100%
	White	62%	93%	87%	87%	80%	86%	92%	96%	91%	94%	95%	94%	85%	100%
	Unknown	61%	100%	71%	100%	67%	75%	-	91%	100%	0%	75%	100%	75%	100%
	International	44%	92%	90%	100%	90%	93%	86%	96%	100%	100%	96%	99%	100%	100%
	<b>Total</b>	<b>58%</b>	<b>86%</b>	<b>85%</b>	<b>85%</b>	<b>80%</b>	<b>81%</b>	<b>82%</b>	<b>94%</b>	<b>90%</b>	<b>90%</b>	<b>93%</b>	<b>94%</b>	<b>80%</b>	<b>100%</b>
<b>% Enrolled</b>	AA	40%	39%	38%	36%	44%	34%	35%	30%	32%	38%	43%	18%	33%	39%
	HL	32%	45%	37%	42%	48%	35%	43%	37%	39%	34%	35%	41%	43%	64%
	AI	59%	33%	20%	71%	44%	58%	50%	17%	100%	65%	60%	44%	36%	79%
	SA	48%	49%	40%	34%	47%	35%	15%	28%	24%	36%	46%	8%	35%	54%
	TMR-URM	50%	47%	39%	42%	37%	38%	35%	40%	56%	56%	45%	37%	47%	65%
	<b>URM</b>	<b>38%</b>	<b>44%</b>	<b>38%</b>	<b>40%</b>	<b>45%</b>	<b>35%</b>	<b>38%</b>	<b>34%</b>	<b>35%</b>	<b>39%</b>	<b>42%</b>	<b>29%</b>	<b>40%</b>	<b>55%</b>
	HPI	47%	63%	25%	100%	0%	100%	-	-	-	50%	0%	50%	14%	60%
	OA	23%	44%	25%	56%	41%	24%	41%	42%	23%	26%	44%	40%	29%	55%
	TMR-Non-URM	35%	47%	54%	50%	45%	26%	44%	35%	67%	35%	68%	25%	47%	69%
	White	44%	44%	46%	43%	43%	42%	51%	50%	51%	47%	55%	39%	46%	75%
	Unknown	21%	36%	40%	0%	50%	100%	-	40%	13%	-	33%	100%	33%	68%
	International	24%	58%	58%	78%	39%	28%	32%	77%	30%	42%	40%	46%	50%	91%
	<b>Total</b>	<b>39%</b>	<b>44%</b>	<b>45%</b>	<b>44%</b>	<b>43%</b>	<b>41%</b>	<b>46%</b>	<b>49%</b>	<b>48%</b>	<b>45%</b>	<b>53%</b>	<b>39%</b>	<b>45%</b>	<b>70%</b>

Note: AA (African American), HL (Hispanic/Latino(a)), AI (American Indian), SA (Southeast Asian), TMR-URM (Students identifying as two or more races, one of which is an underrepresented minority group), URM (Underrepresented Minority), HPI (Hawaiian/Pacific Islander), OA (Other Asian), TMR-Non-URM (Students identifying as two or more races, none of which is an underrepresented minority group). Applications and admissions include students who applied and/or were admitted to multiple UW institutions. The admission rate is based on completed applications.

**Appendix E**  
**UW System New Freshman Headcount by Institution**  
**Fall 1976 to Fall 2015**

	MSN	MIL	EAU	GBY	LAC	OSH	PKS	PLT	RVF	STP	STO	SUP	WTW	UWC	Total
1976	3,918	2,994	2,245	560	1,884	1,709	784	1,150	1,264	1,913	1,279	485	1,915	3,158	25,258
1977	4,217	2,741	2,623	563	2,140	1,666	783	1,154	1,154	2,053	1,291	553	1,826	3,293	26,057
1978	4,683	3,165	2,555	597	2,057	1,752	909	1,040	1,199	1,960	1,414	465	1,773	2,991	26,560
1979	4,836	2,833	2,695	677	2,176	1,851	1,009	1,107	1,245	1,970	1,407	425	2,026	3,104	27,361
1980	5,021	2,845	2,737	789	2,053	1,807	1,056	1,227	1,317	2,021	1,507	446	2,165	3,461	28,452
1981	4,683	2,808	2,441	773	2,040	2,004	1,045	1,297	1,294	1,966	1,375	404	2,195	3,505	27,830
1982	4,797	2,684	2,494	714	1,928	1,797	954	1,246	1,116	1,712	1,380	382	2,082	3,606	26,892
1983	5,110	2,847	2,475	693	2,028	1,771	1,075	1,201	1,082	1,727	1,374	347	2,135	3,872	27,737
1984	5,490	2,866	2,355	708	2,072	1,869	871	1,062	1,103	1,798	1,388	321	2,189	3,660	27,752
1985	5,687	2,749	2,387	811	2,131	1,804	817	1,176	1,001	1,911	1,436	333	2,254	3,481	27,978
1986	5,383	2,679	2,472	696	2,114	1,947	886	1,127	1,145	1,838	1,419	368	2,136	3,738	27,948
1987	5,181	2,391	2,320	817	1,977	1,857	753	1,156	1,052	1,691	1,404	375	2,152	3,780	26,906
1988	5,934	2,649	2,278	862	1,890	1,837	942	1,059	1,048	1,705	1,361	412	1,898	4,241	28,116
1989	4,993	2,466	1,934	782	1,690	1,730	760	995	957	1,693	1,143	414	1,836	3,663	25,056
1990	4,699	2,450	1,736	746	1,622	1,608	785	943	940	1,581	1,130	346	1,953	3,570	24,109
1991	4,642	2,157	1,792	829	1,655	1,455	761	1,027	1,054	1,503	1,177	478	1,819	3,374	23,723
1992	4,416	1,882	1,869	816	1,495	1,492	769	910	1,026	1,398	1,000	363	1,785	3,454	22,675
1993	4,631	1,930	1,956	770	1,702	1,514	783	950	846	1,375	1,030	345	1,846	3,531	23,209
1994	4,681	1,806	2,088	883	1,504	1,393	770	958	1,004	1,384	1,075	285	1,704	3,125	22,660
1995	5,164	1,988	2,038	848	1,747	1,523	744	948	968	1,505	1,144	306	1,900	2,954	23,777
1996	5,455	2,253	2,048	1,027	1,735	1,559	686	965	1,161	1,586	1,287	324	1,842	2,839	24,767
1997	5,880	2,481	2,171	953	1,706	1,758	819	998	1,152	1,551	1,250	352	1,914	2,916	25,901
1998	5,596	2,700	2,156	1,035	1,744	1,923	883	1,122	1,207	1,517	1,345	396	1,931	3,503	27,058
1999	5,664	2,938	2,016	934	1,638	1,852	889	1,138	1,127	1,500	1,324	432	1,907	3,764	27,123
2000	5,736	2,979	2,094	996	1,614	1,652	823	1,003	1,126	1,530	1,322	422	2,077	3,964	27,338
2001	6,095	3,035	2,136	920	1,599	1,871	926	1,094	1,117	1,518	1,289	351	1,895	4,154	28,000
2002	5,514	3,314	2,057	917	1,557	1,811	832	1,126	1,060	1,476	1,312	314	2,035	4,141	27,466
2003	5,579	3,856	1,877	971	1,510	1,786	976	1,136	1,228	1,513	1,280	345	1,833	4,397	28,287
2004	5,641	3,823	2,034	998	1,546	1,729	985	1,202	1,212	1,536	1,292	347	1,762	4,305	28,412
2005	6,141	4,345	2,069	925	1,758	1,638	878	1,246	1,209	1,534	1,708	346	1,712	4,126	29,635
2006	5,643	4,090	2,026	1,028	1,752	1,765	907	1,439	1,296	1,650	1,516	312	1,805	4,113	29,342
2007	5,994	4,598	2,034	1,003	1,754	1,760	951	1,546	1,287	1,624	1,498	350	2,063	4,190	30,652
2008	5,773	4,118	2,059	1,017	1,785	1,843	929	1,554	1,345	1,632	1,644	312	2,154	4,164	30,329
2009	5,680	4,151	2,015	1,049	1,828	1,907	890	1,633	1,336	1,645	1,541	369	1,953	4,341	30,338
2010	5,927	3,827	2,072	906	1,840	1,861	805	1,604	1,245	1,661	1,596	380	2,044	4,489	30,257
2011	5,828	3,746	1,953	910	1,978	1,872	766	1,721	1,234	1,613	1,476	352	2,006	4,433	29,888
2012	6,279	3,492	2,073	921	1,897	1,841	712	1,754	1,119	1,637	1,498	366	2,168	4,237	29,994
2013	6,339	3,303	2,017	809	2,005	1,748	762	1,646	1,071	1,636	1,573	325	2,108	4,194	29,536
2014	6,264	3,454	2,100	770	1,986	1,709	630	1,705	1,015	1,631	1,469	330	2,151	3,889	29,103
2015	6,269	3,315	2,239	789	2,071	1,572	620	1,621	1,066	1,792	1,575	366	2,189	3,776	29,260

**Appendix F**  
**UW System New Freshmen by Average High School Percentile Rank and Institution**  
**Fall 1976 to Fall 2015**

	MSN	MIL	EAU	GBY	LAC	OSH	PKS	PLT	RVF	STP	STO	SUP	WTW	UWC	Total
1976	81.2	66.9	70.9	67.8	65.8	58.8	63.3	66.8	60.4	61.1	61.8	65.3	63.3	60.9	66.8
1977	80.2	68.6	70.6	68.1	64.7	67.6	62.9	66.9	62.5	63.6	61.4	59.4	65.2	61.6	67.2
1978	79.5	65.8	70.4	65.1	66.9	58.2	62.4	67.2	62.6	64.5	60.4	62.2	63.6	61.8	67.1
1979	79.3	66.2	70.7	64.5	65.5	59.1	62.9	64.5	62.1	62.8	60.9	63.2	64.4	61.7	66.9
1980	79.8	64.8	69.9	64.8	65.7	60.2	60.9	64.9	62.2	62.2	60.4	59.0	64.6	58.9	66.3
1981	80.7	64.0	73.8	64.1	66.2	60.0	60.7	65.9	61.6	62.5	59.1	61.4	64.9	59.1	66.5
1982	80.0	67.1	72.0	62.8	64.4	60.3	62.0	63.3	63.4	61.2	57.0	64.1	63.5	58.7	66.3
1983	80.2	66.0	70.5	66.2	63.2	62.0	59.2	61.9	61.2	62.0	55.6	58.6	63.1	56.9	65.6
1984	78.9	66.9	68.6	65.7	63.0	62.6	59.6	63.3	60.0	61.7	53.2	59.1	60.7	57.3	65.3
1985	79.1	66.6	67.9	64.7	63.2	61.3	59.6	63.3	59.7	60.2	53.6	59.2	60.8	55.0	65.0
1986	78.5	66.5	69.2	63.4	61.6	62.0	60.2	63.2	58.6	61.6	54.9	58.7	62.8	53.8	64.7
1987	80.6	65.7	68.4	63.6	63.0	63.0	60.7	65.3	60.3	65.8	56.4	60.6	64.3	51.4	65.4
1988	79.9	64.2	72.6	67.5	67.0	66.2	57.8	64.5	64.1	67.1	58.0	62.8	68.0	51.2	66.5
1989	81.4	62.8	76.4	68.8	70.0	66.3	62.9	68.4	63.8	67.6	60.7	62.6	69.8	53.7	68.1
1990	81.7	62.6	76.1	68.7	70.0	68.6	60.5	67.4	64.9	65.6	57.8	60.2	68.6	51.2	67.4
1991	81.2	62.8	74.9	69.2	69.4	69.5	59.2	68.5	64.1	69.3	54.9	61.9	66.6	51.7	67.3
1992	82.2	62.7	75.1	71.5	70.7	71.6	58.4	71.0	66.7	70.4	63.7	65.9	65.1	51.1	68.3
1993	82.9	61.3	72.9	72.9	72.5	71.7	58.1	71.2	70.8	70.9	64.4	65.7	65.2	50.5	68.5
1994	84.6	60.7	72.8	70.9	74.9	71.3	59.0	70.3	69.1	72.7	61.2	63.9	64.9	50.3	69.1
1995	85.6	59.7	72.4	73.2	74.8	68.9	58.3	68.2	67.6	71.7	60.1	63.9	64.8	49.6	69.1
1996	84.6	58.3	71.2	70.1	75.3	66.9	59.6	69.0	70.7	69.1	60.7	64.0	65.7	51.0	68.9
1997	85.0	58.9	71.7	71.4	76.3	67.8	59.0	67.3	70.5	71.1	61.9	62.5	64.3	50.1	69.2
1998	86.2	58.5	73.1	71.4	77.6	68.2	56.8	67.6	70.6	73.0	63.4	60.9	64.5	50.1	69.0
1999	86.3	58.5	74.8	72.4	78.4	66.9	56.3	66.8	70.8	72.7	62.5	61.8	63.9	49.1	68.5
2000	86.8	58.9	74.2	72.2	79.0	66.6	56.0	64.9	69.8	73.5	64.0	63.2	63.4	47.8	68.3
2001	87.7	59.1	73.4	73.1	78.9	64.8	56.1	65.9	68.5	71.9	64.6	66.0	62.8	48.2	68.5
2002	88.6	59.9	74.8	72.8	80.0	65.2	54.2	64.4	68.3	73.2	64.8	63.0	64.2	49.3	68.5
2003	88.6	60.0	76.8	72.3	82.3	69.4	52.3	66.2	68.5	72.6	65.6	67.0	65.3	49.7	68.8
2004	88.7	59.1	76.2	--	83.3	70.1	55.5	64.1	64.5	73.0	61.6	66.2	65.6	49.8	68.5
2005	88.5	58.1	76.2	--	82.0	69.2	55.5	64.6	65.3	70.4	61.4	67.3	64.1	48.5	67.9
2006	89.1	58.5	75.4	--	82.3	69.2	56.7	64.2	63.9	71.2	62.4	65.3	63.9	49.2	67.7
2007	89.1	57.0	75.5	--	82.4	69.0	57.0	64.0	62.0	72.1	62.1	66.1	63.9	47.8	67.2
2008	88.9	58.1	75.5	--	81.8	68.1	58.1	62.7	64.0	71.9	59.2	65.0	63.2	48.6	67.3
2009	88.3	57.1	76.1	--	81.8	67.1	59.3	63.9	64.1	71.8	62.0	63.1	63.1	48.3	67.3
2010	88.7	57.4	74.7	--	80.2	68.0	59.2	63.2	63.5	72.8	61.4	63.2	63.6	48.3	66.9
2011	89.3	58.6	75.2	--	80.1	68.0	59.1	63.8	61.3	73.6	62.4	62.9	63.8	48.2	67.4
2012	89.1	59.7	74.7	--	81.2	66.6	61.2	62.9	63.8	70.7	60.2	60.4	61.4	49.3	67.5
2013	87.4	57.6	73.8	--	79.6	66.3	61.3	64.0	63.6	67.2	60.0	60.0	61.6	48.6	66.8
2014	87.9	57.9	71.9	--	78.9	65.1	60.7	64.2	63.7	66.1	61.8	56.6	60.6	47.3	66.3
2015	88.1	58.9	72.3	--	77.7	63.5	63.2	64.6	62.6	62.6	60.8	54.6	62.8	47.9	66.0

Note: Excludes students for whom a high school rank was not provided. In fall 2004, UW-Green Bay discontinued collecting high school rank from applicants.