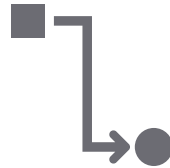


A blurred background image showing several graduates wearing black academic caps and gowns, with one graduate in the foreground slightly more in focus than the others.

# Direct Admit Wisconsin

*University of Wisconsin Systemwide  
Direct Admissions Program*

# What is Direct Admissions?



Direct admissions sidesteps the typical college admission process



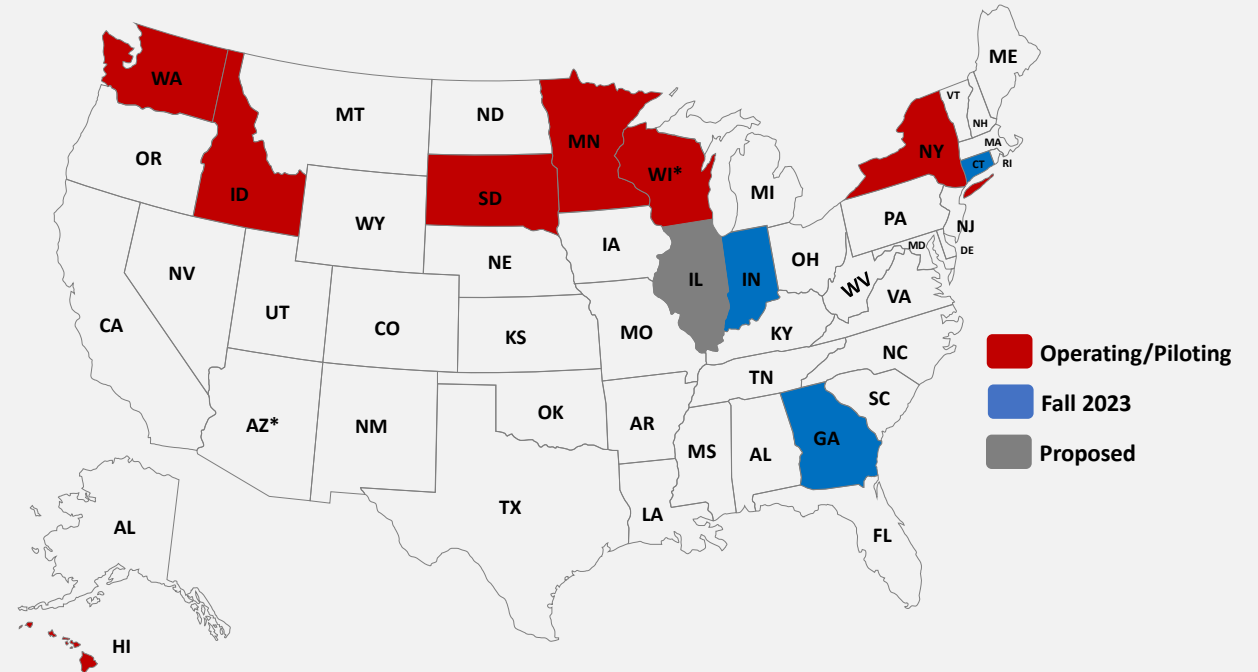
Students are *proactively* guaranteed a place in college



Admission is based on *existing* student-level data; typically, high school GPA and standardized test scores

# Direct Admissions in Other States

## Direct Admissions



\* AZ and WI are piloting direct admissions at one or more institutions.

# Principles of Direct Admissions

**Proactive:** Preemptive information to students

**Guaranteed:** College admission is “a sure thing”

**Universal:** Postsecondary options are available for all students

**Transparent:** Admission criteria are plain and clearly known

**Simple and personalized:** Send straightforward, individualized information

**Low-cost:** Repurpose existing data for bigger impacts

**Trusted Adults:** Involve parents and high schools in the process

# Direct Admit Wisconsin



- Collaborative effort between UW System and Wisconsin K-12 school districts
- Start with rising seniors (class '25)
- Matched with UW universities based direct admissions criteria
- Personalized letters from UWS notifying students which UWs they are directly admitted to
- Streamlined enrollment process
  - No application
  - No application fees
  - Transcript sharing

# Direct Admit Wisconsin Participating UW Universities



**UW-Green Bay**

**UW-Milwaukee**

**UW-Oshkosh**

**UW-Parkside**

**UW-Platteville**

**UW-River Falls**

**UW-Stevens Point**

**UW-Stout**

**UW-Superior**

**UW-Whitewater**

\*Some universities may participate with main  
and/or branch campuses

# How are students matched with the UWs?

## University Requirements

- GPA
- Completed Academic Units requirements
- Graduation requirement

## Student-level Data

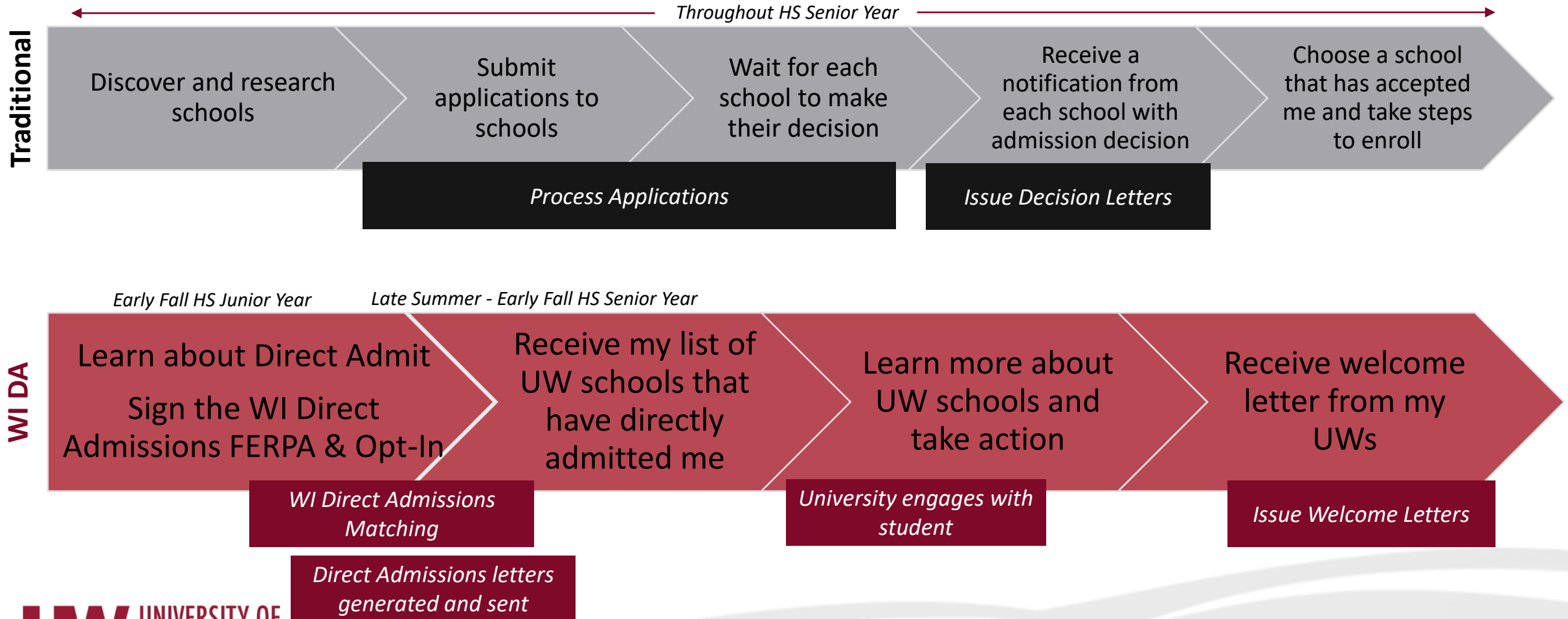
- Student end of junior year GPA
- Student on track for graduation progress

Student  
Information  
System

**MY UW  
MATCHES!**

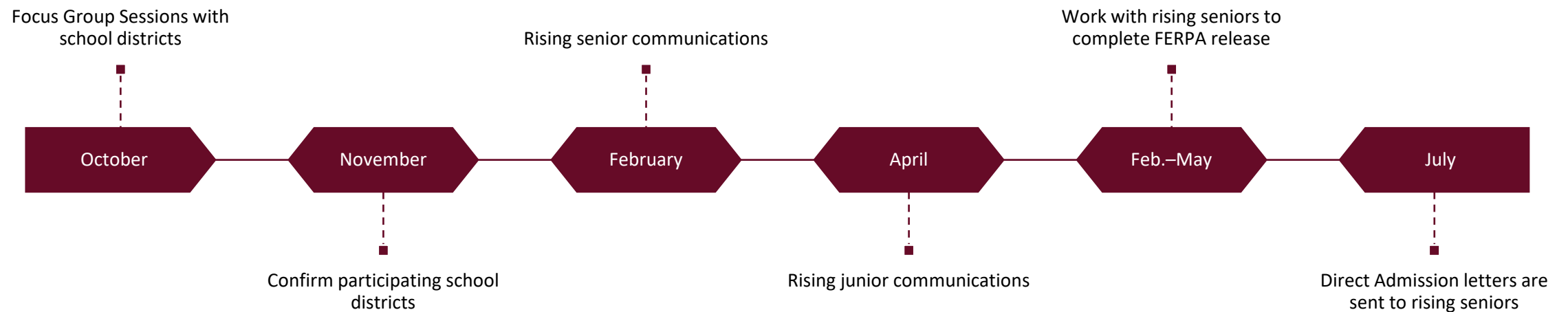


# Traditional Admissions vs. Direct Admit WI





# Direct Admit Wisconsin Timeline



# How can your school district participate?



## Year 1 rollout

- Users of Infinite Campus and Skyward information systems
- Ability to commit staff to do the initial set-up in Infinite Campus
- Data-sharing agreement
- Commit to collaborating with UWS and sharing information on Direct Admissions across your district
- Attend a focus group session to learn more
- Complete the interest survey

## Phase 2 and beyond

- UWSA will explore working with other SIS vendors and developing a low-tech solution for schools that would like to opt-in phase 2
- UWSA will reach out when phase 2 rollout is ready

# Why Infinite Campus and Skyward?

Infinite Campus built the infrastructure for the State of Minnesota and Skyward is able to bring on the same technology for Fall 2024

Here is what they can do:

- Embed FERPA release
- Identify students who do not opt in
- Create Academic Requirements
- Match academic requirements
- Push letter/notification/survey
- Infinite Campus and WI Infinite Campus rep can create training documents and videos
- Transcript sharing capabilities

District staff will need to engage in some initial set-up of the information Infinite Campus and take trigger some actions throughout the school year.

# Next Steps



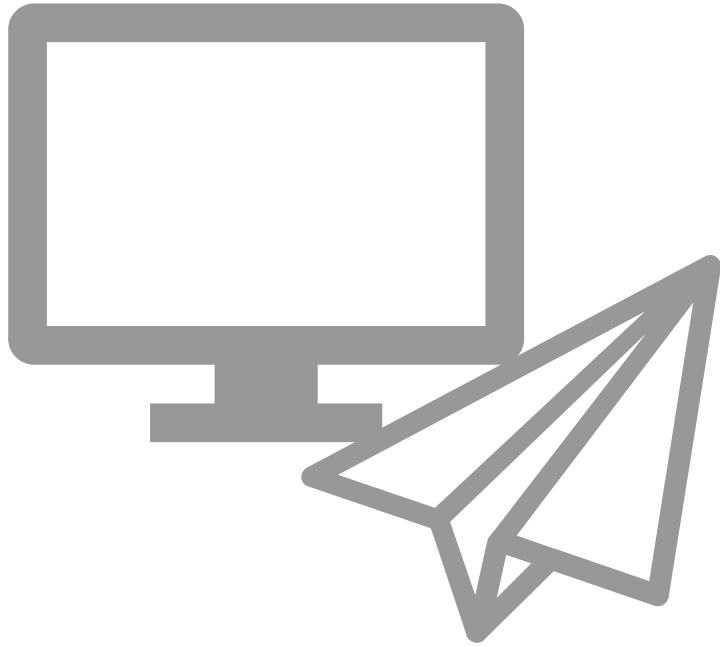
Discuss Direct Admit Wisconsin with your district leadership and colleagues



Interested districts should sign up for a focus group session in October. Check your handouts for sign up link! Also available on the website.



Keep an eye out for the interest survey that will be sent to all superintendents



## Questions:

- Corina Diaz-Suazo,  
[cdiaz@uwsa.edu](mailto:cdiaz@uwsa.edu)