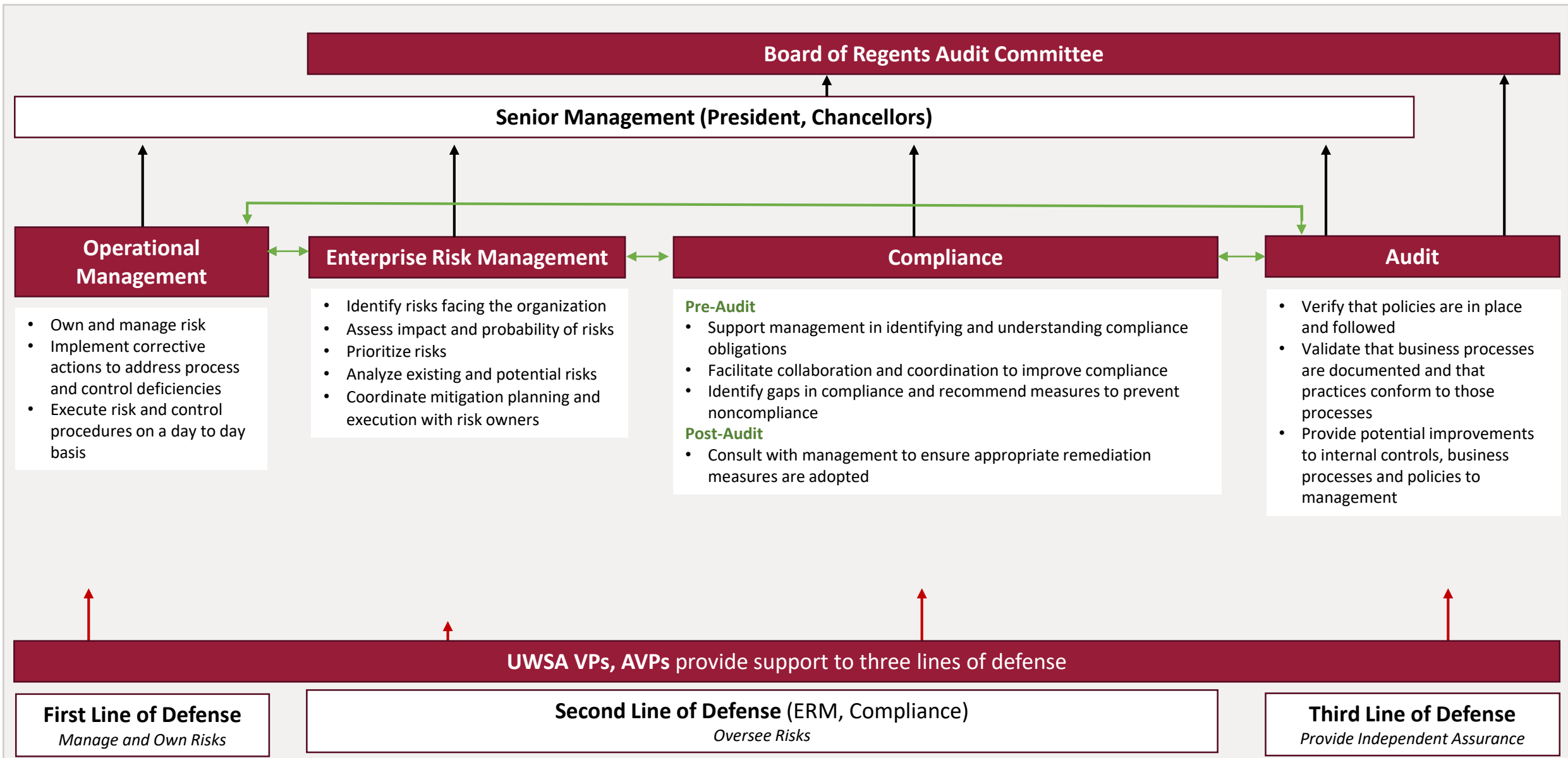


# The Three Lines of Defense at UW System<sup>1</sup>



↑ \*Black arrow indicates direct reporting relationship

\*\*This map depicts reporting structure internal to UWSA and, aside from Audit, within individual institutions (i.e. compliance officers report directly to Chancellors on campus)

↑ \*Red arrow indicates supporting relationship

↑ \*Green arrow indicates flow of information

<sup>1</sup>The Three Lines of Defense in Effective Risk Management and Control, The Institute of Internal Auditors, January 2013