

ALUMNI HOUSE

Basement

Revised: 08/03/2011



ROOM	AREA
B1	43
B18	28
B1A	342
B1B	290
B1C	60
B1D	54
B1S	54
B1U	70
B20	402
B27	825
B27A	74
B3	307
B35	448
B39	357
B4	262
B45	90
B45A	236
B58	353
B58A	19
B62	32

ROOM	AREA
B71	348
B88	807



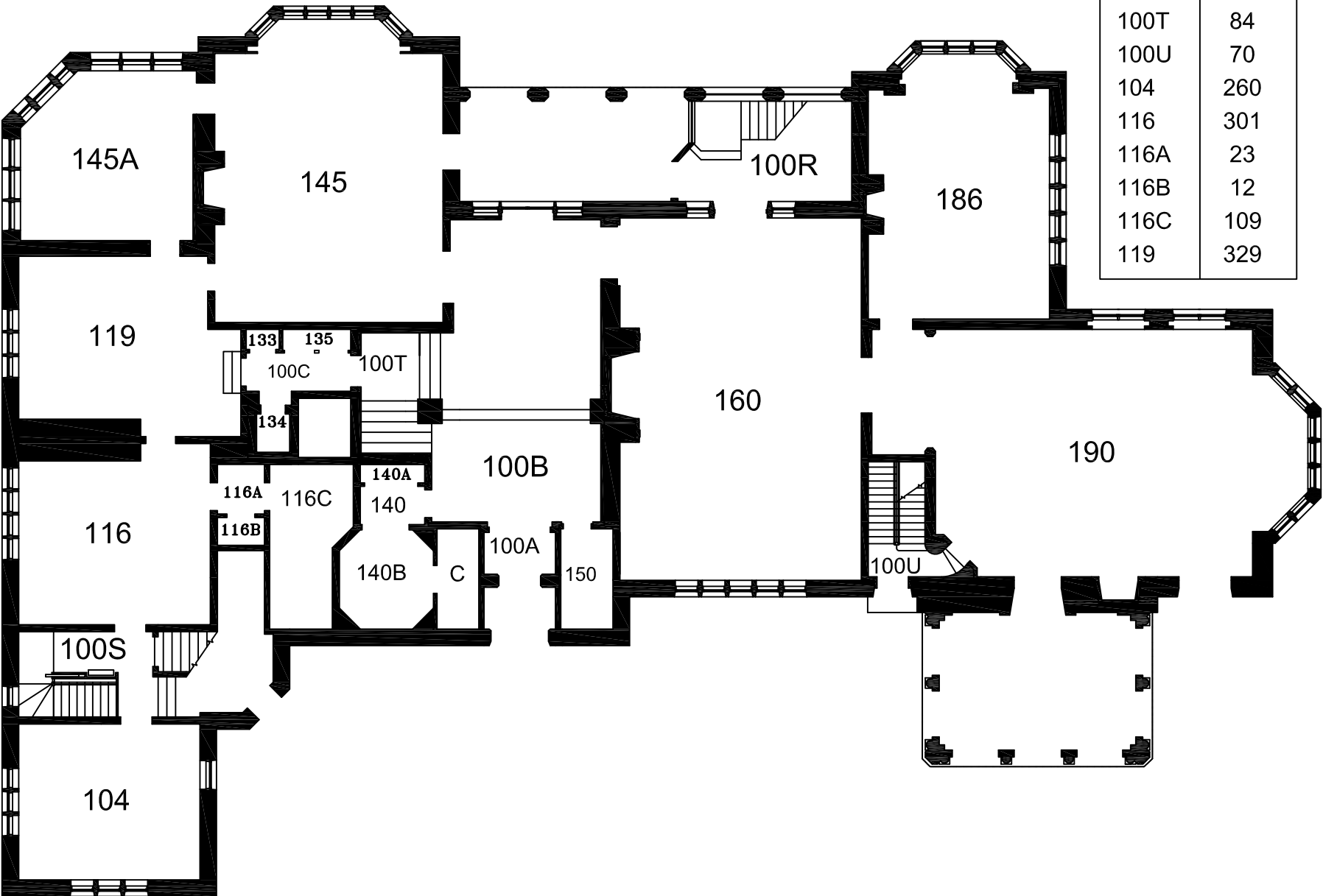
ALUMNI HOUSE

First Floor

Revised: 08/03/2011

← North

ROOM	AREA	ROOM	AREA
100A	31	133	6
100B	453	134	13
100C	44	135	14
100R	151	140	25
100S	230	140A	12
100T	84	140B	79
100U	70	140C	39
104	260	145	613
116	301	145A	260
116A	23	150	49
116B	12	160	813
116C	109	186	409
119	329	190	856

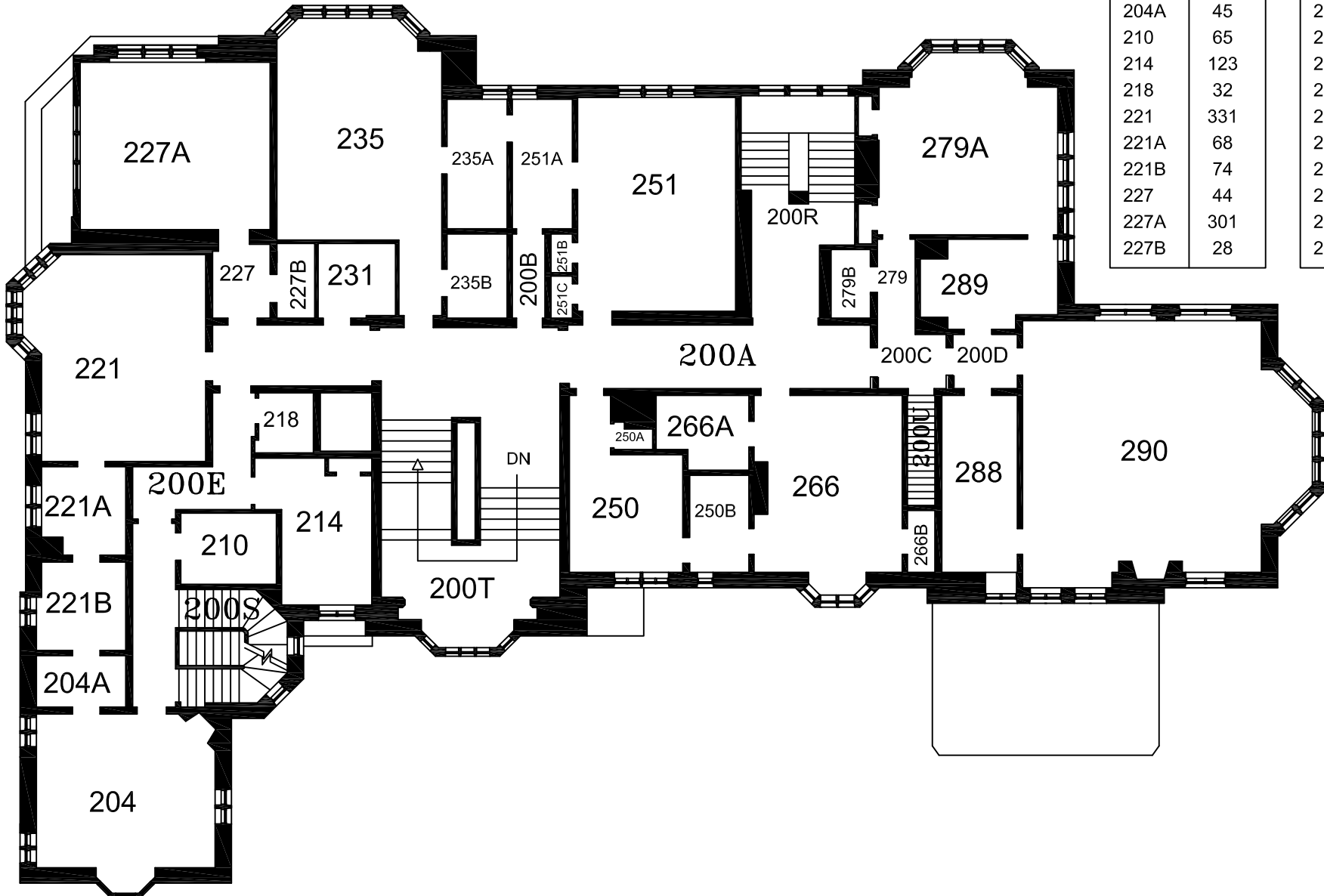


ALUMNI HOUSE

Second Floor

Revised: 08/03/2011

← North



ROOM	AREA
200A	389
200B	28
200C	38
200D	35
200E	163
200R	204
200S	108
200T	370
200U	29
204	270
204A	45
210	65
214	123
218	32
221	331
221A	68
221B	74
227	44
227A	301
227B	28

ROOM	AREA
231	55
235	366
235A	75
235B	48
250	151
250A	9
250B	56
251	320
251A	75
251B	8
251C	9
266	254
266A	60
266B	17
279	35
279A	287
279B	26
288	127
289	103
290	639

ALUMNI HOUSE

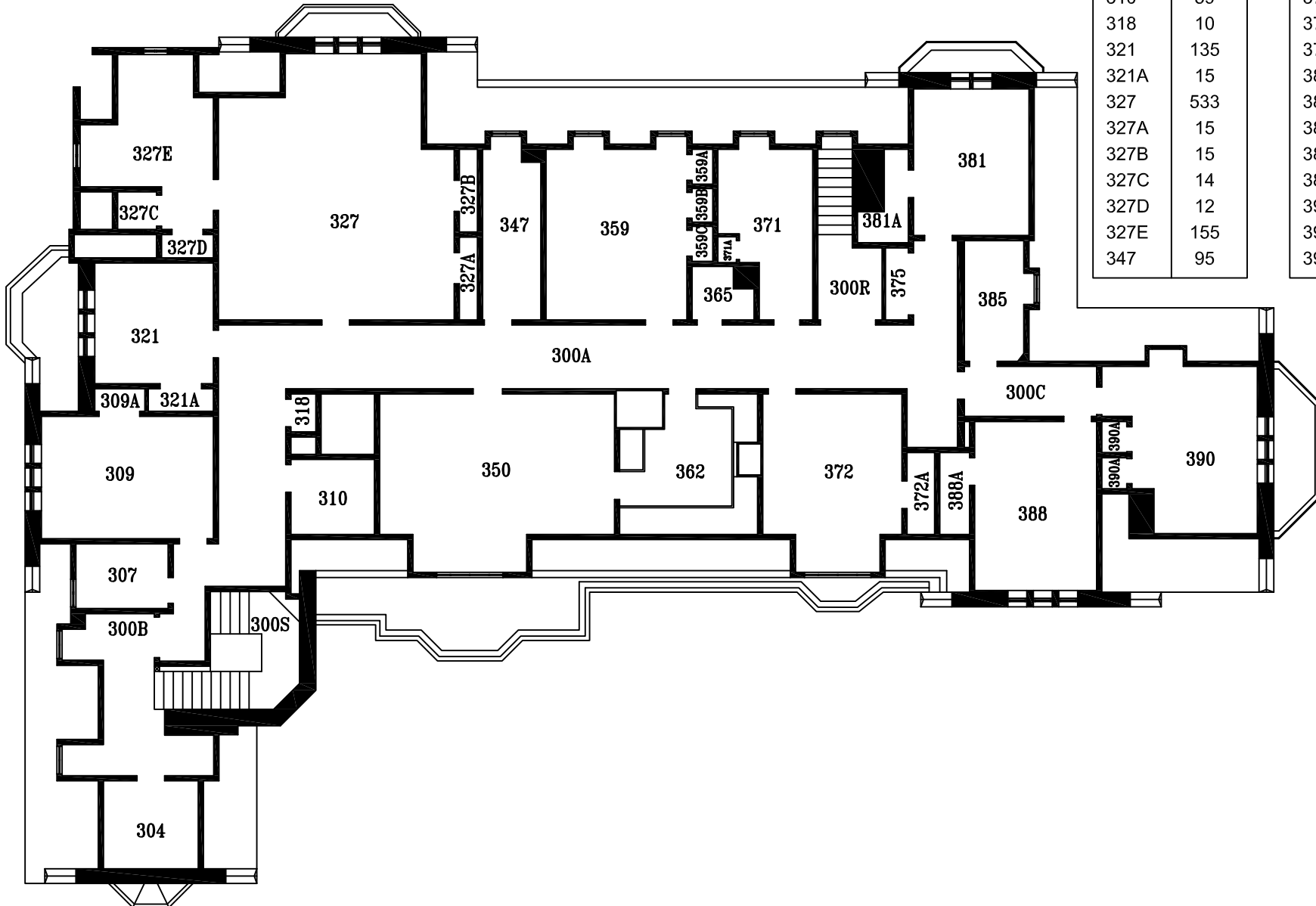
Third Floor

Revised: 08/03/2011



ROOM	AREA
300A	687
300B	131
300C	65
300R	80
300S	93
304	78
307	56
309	198
309A	11
310	59
318	10
321	135
321A	15
327	533
327A	15
327B	15
327C	14
327D	12
327E	155
347	95

ROOM	AREA
350	350
359	235
359A	7
359B	7
359C	7
362	89
365	27
371	128
371A	5
372	214
372A	22
375	17
381	160
381A	30
385	71
388	194
388A	23
390	208
390A	8
390B	8



ALUMNI HOUSE

Roof Level

Revised: 07/13/2016

← North

