



The University of Wisconsin System

## Informational Memorandum

### Student Financial Aid: 2014-15 Update

#### Highlights

##### What financial aid is available for UW students?

- UW System undergraduate and graduate students received \$1.4 billion in financial aid in 2014-15, a decrease of \$4.4 million from 2013-14.
- UW students received \$470.7 million in grant funding, a \$15.6 million (3%) increase.
- UW students borrowed \$868.2 million in student loans, a \$19.0 million (2%) decrease.
- UW students received \$12.0 million in Federal Work-Study and other work-study funding, a \$1.0 million (8%) decrease.

##### What are the sources of financial aid?

- Federal sources accounted for 73% of UW System financial aid.
- State sources accounted for 7% of UW System financial aid.
- UW System institutions provided 9% of UW System financial aid.
- 11% of UW System financial aid was provided by private or community sources.

##### How many UW students receive financial aid?

- A total of 123,103 UW System students received financial aid, 68% of all students enrolled.
- 71% of undergraduate students, or 111,623 students, received financial aid.
- 47% of undergraduate and graduate students, or 83,995 students, received a grant.
- Over half of all enrolled undergraduate and graduate students (53% or 96,561 students), borrowed from a student loan program in 2014-15.
- 5% of UW System undergraduate and graduate students (8,310) received a Federal Work-Study award or an award from another work-study program.
- 74% of resident baccalaureate degree recipients had loan debt at graduation. The average loan debt of these borrowers was \$30,650.

The University of Wisconsin System  
Office of Policy Analysis and Research  
<https://www.wisconsin.edu/reports-statistics/>

July 2016

1534 Van Hise Hall  
1220 Linden Drive  
Madison, WI 53706  
(608) 262-6441

## **OVERVIEW OF STUDENT FINANCIAL AID TRENDS**

Overall, 123,103 UW students (68% of total enrollment) received \$1.4 billion in financial aid in 2014-15 (Table 1). Compared to 2013-14, the number of financial aid recipients decreased by 1,209, while dollars awarded decreased by \$4.4 million. Seventy-one percent (71%) of undergraduate students received some financial aid (including non-need based aid) in 2014-15.

The percentage of UW System students receiving aid has increased since 2005-06 from 63 percent to 68 percent. Undergraduate resident students show a 7 percentage point increase during this period.

**Table 1**  
**Financial Aid Provided to UW System Students**

Year	Undergraduate						Graduate		Total Aided		
	Total		Resident		Non-Resident		#	%Enroll	#	\$M	%Enroll
	#	%Enroll	#	%Enroll	#	%Enroll					
05-06	94,302	65%	81,292	67%	13,010	56%	11,221	48%	105,523	\$828.8	63%
06-07	95,580	66%	82,076	67%	13,504	57%	11,523	48%	107,103	\$881.2	63%
07-08	98,575	66%	84,045	68%	14,530	58%	11,537	47%	110,112	\$951.2	64%
08-09	101,651	67%	86,314	69%	15,337	58%	11,637	48%	113,288	\$1,061.9	65%
09-10	108,641	71%	92,280	73%	16,361	60%	12,380	49%	121,021	\$1,215.0	68%
10-11	113,280	72%	95,808	75%	17,479	61%	12,814	51%	126,094	\$1,318.8	69%
11-12	115,201	74%	97,327	76%	17,874	61%	12,412	50%	127,613	\$1,364.2	70%
12-13	115,246	73%	96,616	76%	18,630	61%	11,453	48%	126,699	\$1,365.2	70%
13-14	113,134	72%	94,271	76%	18,863	59%	11,178	47%	124,312	\$1,355.3	69%
14-15	111,623	71%	92,025	74%	19,598	59%	11,480	48%	123,103	\$1,350.9	68%

Notes: Students with uncategorized residency are included with residents.  
Students with uncategorized classification are included with undergraduates.

## **SOURCES OF AID FOR UW STUDENTS**

Three out of four financial aid dollars (73%) to UW students were provided or underwritten through a Federal program (Table 2). Aid from State sources represented 7 percent of all aid. Institutional aid accounted for 9 percent of the aid received by UW students. Institutional aid is made up primarily of scholarships funded through sources such as donations to UW institutions and tuition differentials. Detailed information of financial aid by type and institution is presented in Appendices A, B, and C.

The percentage of aid from Federal sources has declined since 2005-06, when 77 percent of all aid dollars were from this source. State aid, as a percentage of all aid, has remained at a fairly constant 7 to 8 percent during the 10-year period. Financial aid awarded by private and other sources is 11 percent of all financial aid. In 2014-15 UW System students received \$143.3 million in financial aid from "Other" sources, such as private or community sources.

Institutional grants and scholarships grew by \$9.4 million between 2013-14 and 2014-15. Since 2005-06 institutional scholarship awards have increased by 181%.

**Table 2  
UW System Financial Aid by Source of Funding**

Year	All Aid								Grants							
	Federal		State		Institution		Other		Federal		State		Institution		Other	
	\$M	%	\$M	%	\$M	%	\$M	%	\$M	%	\$M	%	\$M	%	\$M	%
05-06	\$639.1	77%	\$66.3	8%	\$41.9	5%	\$81.4	10%	\$92.2	11%	\$66.1	8%	\$39.9	5%	\$23.5	3%
06-07	\$668.8	76%	\$69.7	8%	\$48.4	5%	\$94.2	11%	\$102.8	12%	\$69.5	8%	\$46.2	5%	\$22.5	3%
07-08	\$722.8	76%	\$76.2	8%	\$54.3	6%	\$97.9	10%	\$116.7	12%	\$76.0	8%	\$52.2	5%	\$24.4	3%
08-09	\$827.3	78%	\$81.3	8%	\$58.7	6%	\$94.6	9%	\$130.8	12%	\$81.1	8%	\$56.1	5%	\$29.1	3%
09-10	\$970.2	80%	\$81.0	7%	\$67.2	6%	\$96.7	8%	\$179.0	15%	\$80.7	7%	\$64.4	5%	\$31.7	3%
10-11	\$1,057.9	80%	\$87.0	7%	\$76.9	6%	\$96.9	7%	\$222.0	17%	\$86.7	7%	\$74.4	6%	\$34.0	3%
11-12	\$1,067.9	78%	\$94.8	7%	\$88.8	7%	\$112.8	8%	\$210.2	15%	\$94.6	7%	\$85.7	6%	\$38.5	3%
12-13	\$1,039.8	76%	\$98.7	7%	\$103.1	8%	\$123.7	9%	\$206.5	15%	\$98.5	7%	\$99.3	7%	\$41.0	3%
13-14	\$1,015.4	75%	\$98.4	7%	\$108.2	8%	\$133.3	10%	\$207.5	15%	\$98.2	7%	\$104.8	8%	\$44.6	3%
14-15	\$992.6	73%	\$97.4	7%	\$117.6	9%	\$143.3	11%	\$206.1	15%	\$97.2	7%	\$114.0	8%	\$53.4	4%

**LOANS**

Loan aid comprises the largest component of financial aid to UW students. Loans make up 64 percent of total financial aid dollars (Table 3). Almost 80 percent of financial aid recipients received a loan. Fifty-three percent (53%) of enrolled UW students borrowed in 2014-15.

Overall, loan dollars disbursed increased by 46 percent since 2005-06. Funding has increased by \$276 million since 2005-06.

**Table 3  
UW System Distribution of Loans**

Year	Borrowers	% Aid Recipients	% Enrollment	\$M	\$ % Total Aid
05-06	86,548	82%	51%	\$592.7	72%
06-07	88,182	82%	52%	\$625.8	71%
07-08	89,894	82%	52%	\$667.8	70%
08-09	92,508	82%	53%	\$750.0	71%
09-10	100,023	83%	56%	\$845.5	70%
10-11	103,443	82%	57%	\$888.4	67%
11-12	104,896	83%	58%	\$922.4	68%
12-13	102,561	81%	57%	\$907.3	66%
13-14	98,974	80%	55%	\$887.2	65%
14-15	96,561	78%	53%	\$868.2	64%

The Federal government is the primary source for student borrowing. In 2014-15, the Federal government provided 89 percent (32% need based and 57% non-need based) of student loans (Table 4). Over time, students have been relying more on Federal non-need based loans and private loans, which now comprise 67 percent of student borrowing, or \$585.2 million.

**Table 4**  
**UW System Loans by Source of Funding**

Year	Federal				State		Institutional		Other		Total	
	Need Based		Non-Need Based		\$M	% Loans	\$M	% Loans	\$M	% Loans	\$M	% Loans
	\$M	% Loans	\$M	% Loans								
05-06	\$266.7	45%	\$265.8	45%	\$0.2	0.04%	\$2.1	0.4%	\$57.9	10%	\$592.7	100%
06-07	\$276.7	44%	\$275.0	44%	\$0.2	0.03%	\$2.2	0.4%	\$71.7	11%	\$625.8	100%
07-08	\$300.1	45%	\$291.9	44%	\$0.2	0.03%	\$2.1	0.3%	\$73.5	11%	\$667.8	100%
08-09	\$298.5	40%	\$383.2	51%	\$0.2	0.03%	\$2.6	0.3%	\$65.5	9%	\$750.0	100%
09-10	\$335.8	40%	\$441.7	52%	\$0.3	0.04%	\$2.8	0.3%	\$65.0	8%	\$845.5	100%
10-11	\$371.6	42%	\$451.1	51%	\$0.3	0.03%	\$2.6	0.3%	\$62.9	7%	\$888.4	100%
11-12	\$380.0	41%	\$464.8	50%	\$0.2	0.02%	\$3.0	0.3%	\$74.3	8%	\$922.4	100%
12-13	\$318.7	35%	\$501.9	55%	\$0.2	0.02%	\$3.8	0.4%	\$82.7	9%	\$907.3	100%
13-14	\$294.7	33%	\$500.3	56%	\$0.2	0.02%	\$3.4	0.4%	\$88.6	10%	\$887.2	100%
14-15	\$278.4	32%	\$495.4	57%	\$0.2	0.02%	\$3.5	0.4%	\$89.8	10%	\$868.2	100%

## **GRANTS**

Grant aid comprises 35 percent of all financial aid dollars, the largest proportion of aid in the last 10 years (Table 5). Sixty-eight percent (68%) of financial aid recipients received a grant in 2014-15 and 47 percent of enrolled students received a grant.

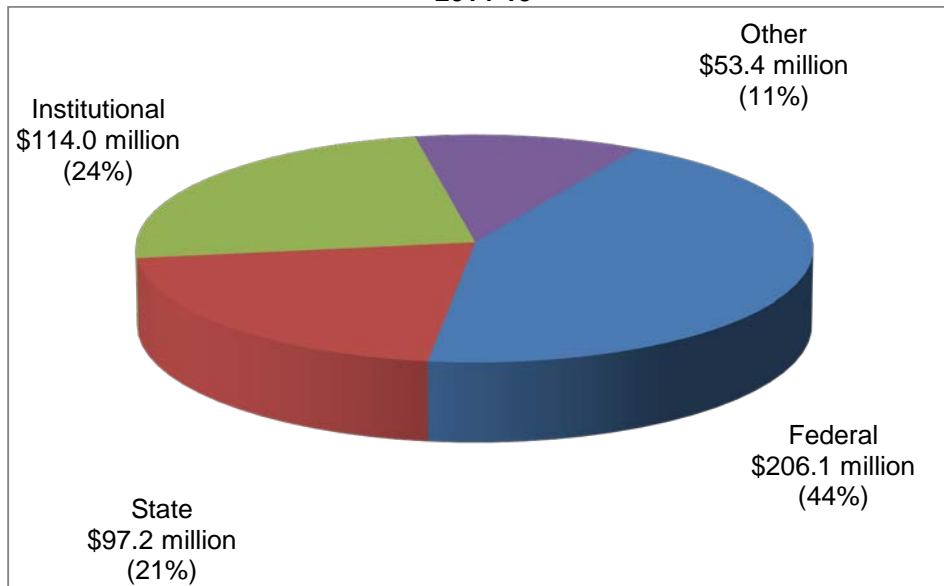
Since 2005-06 grant dollars disbursed have more than doubled. Grants have increased by almost \$250 million in the last decade.

**Table 5**  
**UW System Distribution of Grants**

Year	Recipients	% Aid Recipients	% Enrollment	\$M	% Total Aid
05-06	55,968	53%	33%	\$221.7	27%
06-07	57,691	54%	34%	\$240.9	27%
07-08	61,275	56%	35%	\$269.3	28%
08-09	62,008	55%	35%	\$297.1	28%
09-10	67,224	56%	38%	\$355.8	29%
10-11	75,671	60%	42%	\$417.1	32%
11-12	81,283	64%	45%	\$428.9	31%
12-13	83,804	66%	46%	\$445.2	31%
13-14	83,218	67%	46%	\$455.1	34%
14-15	83,995	68%	47%	\$470.7	35%

In 2014-15, Federal grants made up the largest source of grants (44%) received by UW students (Figure 1). Institutional grants were the second-largest grant category with 24 percent of all grants. State grants were 21 percent of all grants. Grants in the "Other" category (11% of all grants) are those provided by private scholarships, such as the Fund for Wisconsin Scholars and the Wisconsin Covenant Foundation Grant.

**Figure 1  
Sources of Grant Aid for UW System Students  
2014-15**



**Wisconsin Grant Awards to Wisconsin Resident Undergraduates**

The largest need-based State grant program available to Wisconsin residents attending a UW institution is the Wisconsin Grant. One in every four (27%) resident undergraduate students received a Wisconsin Grant award in 2014-15 (Table 6). Other State grant programs are described in Appendix D.

**Table 6  
Wisconsin Grant Awards to UW System Wisconsin Resident Undergraduates**

Year	Recipients	Avg. Grant	\$M	% Res UG Enroll
05-06	24,517	\$1,682	\$41.2	20%
06-07	24,672	\$1,755	\$43.3	20%
07-08	26,326	\$1,892	\$49.8	21%
08-09	27,187	\$2,024	\$55.0	22%
09-10	25,624	\$2,161	\$55.4	20%
10-11	30,344	\$1,962	\$59.5	24%
11-12	30,675	\$1,901	\$58.3	24%
12-13	31,758	\$1,835	\$58.3	25%
13-14	32,880	\$1,773	\$58.3	26%
14-15	32,885	\$1,773	\$58.3	27%
change from 13-14	0%	0%	0%	--

The percentage of Wisconsin resident students receiving a Wisconsin Grant award has grown to 27 percent, the highest percentage in the last 10 years. In 2014-15, the average Wisconsin Grant award was \$1,773. With level funding and no change in the award formula, there was no change in either the number of recipients or the average grant.

Table 7 shows that UW-Superior had the highest proportion of resident undergraduates receiving a Wisconsin Grant award (45%), followed by UW-Parkside (40%), UW-Milwaukee (33%), and UW-River Falls (33%). UW-Madison had the lowest proportion (15%).

**Table 7  
Wisconsin Grant Awards to UW System Wisconsin Resident Undergraduates  
2014-15**

UW Institution	Recipients	Avg. Grant	Total \$ (Millions)	% Res UG Enroll
UW-Madison	2,837	\$1,815	\$5.1	15%
UW-Milwaukee	6,880	\$1,837	\$12.6	33%
UW-Eau Claire	1,963	\$1,764	\$3.5	27%
UW-Green Bay	1,746	\$1,716	\$3.0	28%
UW-La Crosse	1,592	\$1,724	\$2.7	20%
UW-Oshkosh	2,801	\$1,752	\$4.9	22%
UW-Parkside	1,496	\$1,836	\$2.7	40%
UW-Platteville	1,617	\$1,708	\$2.8	27%
UW-River Falls	865	\$1,729	\$1.5	33%
UW-Stevens Point	2,458	\$1,796	\$4.4	31%
UW-Stout	1,574	\$1,782	\$2.8	29%
UW-Superior	564	\$1,750	\$1.0	45%
UW-Whitewater	2,423	\$1,831	\$4.4	26%
UW Colleges	4,069	\$1,664	\$6.8	30%
UW System	32,885	\$1,773	\$58.3	27%

**Pell Grants to Wisconsin Resident Undergraduates**

The largest Federal need-based grant program available to UW System undergraduates is the Pell Grant. One out of every three (32%) resident undergraduates received a Pell Grant award in 2014-15 (Table 8). The average Pell award received by Wisconsin resident undergraduates increased slightly to \$3,876. There was a small decline in resident undergraduate recipients.

**Table 8  
Pell Awards to UW System Wisconsin Resident Undergraduates**

Year	Recipients	Avg. Grant	\$M	% UG Res Enrollment
05-06	25,598	\$2,434	\$62.3	21%
06-07	25,779	\$2,486	\$64.2	21%
07-08	27,751	\$2,667	\$73.9	22%
08-09	27,608	\$3,065	\$84.6	22%
09-10	35,256	\$3,622	\$127.7	28%
10-11	43,319	\$3,725	\$161.3	34%
11-12	43,720	\$3,705	\$162.0	34%
12-13	42,976	\$3,668	\$157.6	34%
13-14	41,506	\$3,746	\$155.5	33%
14-15	40,129	\$3,876	\$151.9	32%
change from 13-14	-3%	3%	-2%	--

**Major Need-Based Grants to UW System Students**

Pell and the Supplemental Educational Opportunity Grant (SEOG) are the two largest Federal grant programs and along with the Wisconsin Grant are the major components of need-based grant aid. Table 9 shows that in 2014-15, 45,981 UW System undergraduates received a Pell award and 15,865 undergraduates received a SEOG award. (According to Federal guidelines, Pell recipients have the highest priority in receiving SEOG awards, so there is overlap between these two award populations.) The average Pell award for resident and nonresident recipients was \$3,787. The number of Pell awards has doubled since 2005-06, due to large increases in 2009-10 and 2010-11. The funding level for the SEOG program has remained fairly constant for over a decade and the average award in 2014-15 was \$627. A table showing Pell recipients by UW institution is found in Appendix E.

**Table 9  
Need-Based Grants to UW System Undergraduate Students**

Year	Federal Pell			Federal SEOG			Wisconsin Grant		
	#	\$ M	Avg	#	\$ M	Avg	#	\$ M	Avg
05-06	28,441	\$69.1	\$2,429	14,815	\$10.0	\$676	24,517	\$41.2	\$1,682
06-07	28,707	\$71.2	\$2,482	15,368	\$10.0	\$649	24,672	\$43.3	\$1,755
07-08	30,813	\$82.2	\$2,666	15,461	\$9.8	\$635	26,326	\$49.8	\$1,892
08-09	30,828	\$94.5	\$3,067	16,085	\$10.2	\$633	27,187	\$55.0	\$2,024
09-10	39,448	\$142.8	\$3,621	16,596	\$10.2	\$615	25,624	\$55.4	\$2,161
10-11	48,658	\$180.9	\$3,718	16,714	\$9.5	\$568	30,344	\$59.5	\$1,962
11-12	49,186	\$182.1	\$3,701	15,207	\$9.0	\$590	30,675	\$58.3	\$1,901
12-13	48,549	\$177.8	\$3,662	15,626	\$9.2	\$589	31,758	\$58.3	\$1,835
13-14	47,150	\$176.8	\$3,749	15,907	\$9.4	\$589	32,880	\$58.3	\$1,773
14-15	45,981	\$174.2	\$3,787	15,865	\$10.0	\$627	32,885	\$58.3	\$1,773

Table 10 shows the percentage of financial aid recipients participating in Federal need-based grant programs. In 2014-15, 37 percent of aid recipients received a Pell award and 13 percent of recipients received a SEOG award. Since the Pell award increases in 2009-10 and 2010-11, these percentages have been fairly constant over the past several years.

**Table 10  
Percentage of UW System Financial Aid Recipients  
Receiving Pell, SEOG, and Wisconsin Grant Awards**

Year	Federal Pell		Federal SEOG		Wisconsin Grant	
	% Recips	% of \$	% Recips	% of \$	% Recips	% of \$
05-06	27%	8%	14%	1%	23%	5%
06-07	27%	8%	14%	1%	23%	5%
07-08	28%	9%	14%	1%	24%	5%
08-09	27%	9%	14%	1%	24%	5%
09-10	33%	12%	14%	1%	21%	5%
10-11	39%	14%	13%	1%	24%	5%
11-12	39%	13%	13%	1%	24%	4%
12-13	38%	13%	12%	1%	25%	4%
13-14	38%	13%	13%	1%	26%	4%
14-15	37%	13%	13%	1%	27%	4%

## WORK STUDY

In 2014-15, \$12.0 million was provided through Federal Work-Study, the Reserve Officer Training Program, and the Great Lakes Higher Education Commission Internship program. In 2014-15, 8,310 undergraduate and graduate students participated in work-study programs, which accounted for 1 percent of all financial aid dollars (Table 11).

**Table 11**  
**Distribution of Work-Study Awards**  
**to UW System Students**

Year	Recipients	% Aid Recipients	% Enrollment	\$M	% Total Aid
05-06	9,576	9%	6%	\$14.3	2%
06-07	9,509	9%	6%	\$14.4	2%
07-08	9,314	8%	5%	\$14.1	1%
08-09	9,251	8%	5%	\$14.8	1%
09-10	9,470	8%	5%	\$13.7	1%
10-11	9,373	7%	5%	\$13.3	1%
11-12	9,092	7%	5%	\$12.9	1%
12-13	8,808	7%	5%	\$12.7	1%
13-14	8,909	7%	5%	\$13.0	1%
14-15	8,310	7%	5%	\$12.0	1%

## CHARACTERISTICS OF FINANCIAL AID RECIPIENTS

Most financial aid recipients in the UW System are financially dependent. Sixty-eight percent (68%) of all aid recipients and 75 percent of undergraduate aid recipients were dependent in 2014-15 (Table 12). A higher percentage of non-resident undergraduate aid recipients are dependent (77%) compared to resident undergraduate recipients (74%).

**Table 12**  
**UW System Financial Aid Recipients by Dependency Level**  
**2014-15**

		Dependent		Independent		Unknown		Total	
		#	%	#	%	#	%	#	%
Undergraduates	Resident	68,157	74%	19,741	21%	4,127	4%	92,025	100%
	Non-Resident	15,171	77%	2,197	11%	2,230	11%	19,598	100%
	Total Undergraduates	83,328	75%	21,938	20%	6,357	6%	111,623	100%
Graduates	Resident	4	0%	6,449	88%	889	12%	7,342	100%
	Non-Resident	1	0%	2,622	63%	1,515	37%	4,138	100%
	Total Graduates	5	0%	9,071	79%	2,404	21%	11,480	100%
Total		83,333	68%	31,009	25%	8,761	7%	123,103	100%

*Note: Dependent graduate students are undergraduate students enrolled in graduate level work and charged graduate tuition.*



Seventy-seven percent (77%) of all UW underrepresented minority students (URM) received some form of financial aid in 2014-15 (Table 13). Eighty-nine percent (89%) of these students had demonstrated financial need as defined by the Federal Needs Analysis methodology. URM include students identifying as African American, Hispanic/Latino(a), American Indian, Southeast Asian, either alone or in combination with other race/ethnic identifications.

By comparison, 57 percent of White/Unknown students and 47 percent of Other Asian American students received financial aid. The group with the highest percentage of enrolled students receiving aid was Southeast Asians with 87 percent.

**Table 13**  
**UW System Financial Aid Recipients by Race/Ethnicity**  
**2014-15**

		# Recipients	% Aided	% Recipients of Enrolled	% Recipients with Need
<b>Undergraduate</b>	African American	4,755	4.3%	84%	92%
	Hispanic/Latino(a)	6,092	5.5%	73%	86%
	American Indian	612	0.5%	78%	87%
	Southeast Asian	3,212	2.9%	88%	97%
	Two or More Races-URM	2,269	2.0%	78%	85%
	<i>Underrepresented Minorities</i>	<i>16,940</i>	<i>15.2%</i>	<i>79%</i>	<i>90%</i>
	Hawaiian/Pacific Islander	112	0.1%	68%	76%
	Other Asian American	1,671	1.5%	49%	76%
	Two or More Races-non-URM	891	0.8%	60%	76%
	White/Unknown	92,009	82.4%	60%	73%
Total Undergraduate		111,623	100.0%	62%	75%
<b>Graduate</b>	African American	621	5.4%	67%	89%
	Hispanic/Latino(a)	520	4.5%	51%	83%
	American Indian	76	0.7%	61%	88%
	Southeast Asian	148	1.3%	64%	91%
	Two or More Races-URM	142	1.2%	58%	86%
	<i>Underrepresented Minorities</i>	<i>1,507</i>	<i>13.1%</i>	<i>59%</i>	<i>87%</i>
	Hawaiian/Pacific Islander	7	0.1%	39%	100%
	Other Asian American	291	2.5%	39%	82%
	Two or More Races-non-URM	64	0.6%	42%	72%
	White/Unknown	9,611	83.7%	37%	74%
Total Graduate		11,480	100.0%	39%	76%
<b>Total</b>	African American	5,376	4.4%	81%	92%
	Hispanic/Latino(a)	6,612	5.4%	70%	86%
	American Indian	688	0.6%	76%	87%
	Southeast Asian	3,360	2.7%	87%	96%
	Two or More Races-URM	2,411	2.0%	77%	85%
	<i>Underrepresented Minorities</i>	<i>18,447</i>	<i>15.0%</i>	<i>77%</i>	<i>89%</i>
	Hawaiian/Pacific Islander	119	0.1%	65%	77%
	Other Asian American	1,962	1.6%	47%	77%
	Two or More Races-non-URM	955	0.8%	58%	76%
	White/Unknown	101,620	82.5%	57%	73%
Total UW System		123,103	100.0%	59%	75%

Notes: Recipients as percentage of enrollment is based on annual unduplicated enrollment.

## **STUDENT INDEBTEDNESS**

UW resident undergraduate students who borrowed both need and non-need based loans during their academic careers had an average debt of \$30,650 at graduation in 2014-15, a 1 percent increase from 2013-14. (Table 14). This debt may have been incurred at any UW System institution, but debt incurred at non-UW System institutions is not included. Seventy-four percent (74%) of resident undergraduate students who graduated in 2014-15 had loan debt at graduation, compared to 66 percent in 2005-06. The amount of loan debt has increased steadily since. However, inflation-adjusted debt (in FY 2002 dollars) declined in 2014-15, for the first time.

The proportion of resident undergraduate debt coming from non-need based loan programs has steadily increased from one-third to half. The trend in the last decade of students receiving more non-need based loans is a concern for college affordability as these loan programs have a higher overall cost of borrowing.

**Table 14**  
**Cumulative Student Loan Debt**  
**UW System Wisconsin Resident Undergraduates Completing a Bachelor's Degree**  
**Who Borrowed While in College**

<b>Year</b>	<b>Loan Recipients</b>	<b>% UG Res Degrees</b>	<b>Average Debt</b>	<b>Avg Debt (FY02 \$)</b>	<b>% \$ Non-Need</b>
05-06	12,140	66%	\$19,809	\$18,017	36%
06-07	12,735	67%	\$21,104	\$18,715	39%
07-08	13,307	68%	\$22,401	\$19,152	41%
08-09	13,459	69%	\$23,789	\$20,139	43%
09-10	13,878	71%	\$25,397	\$21,203	46%
10-11	14,065	71%	\$27,004	\$22,106	48%
11-12	14,813	72%	\$28,002	\$22,269	48%
12-13	15,373	73%	\$29,219	\$22,855	50%
13-14	15,417	74%	\$30,452	\$23,455	49%
14-15	15,469	74%	\$30,650	\$23,437	51%

By comparison to the UW four-year institutions, 59 percent of UW Colleges associate's degree recipients borrow an average of \$13,994 during their undergraduate career, though many will go on to a four-year program. Non-need-based loans account for 44 percent of the loans received by UW Colleges degree recipients.

**Table 15**  
**Cumulative Student Loan Debt**  
**UW Colleges Wisconsin Resident Undergraduates Completing an Associate's Degree**  
**Who Borrowed While in College**

<b>Year</b>	<b>Loan Recipients</b>	<b>% UWC Res Associate</b>	<b>Average Debt</b>	<b>Avg Debt (FY02 \$)</b>	<b>% \$ Non-Need</b>
05-06	625	53%	\$8,641	\$7,859	35%
06-07	701	57%	\$9,038	\$8,015	36%
07-08	719	55%	\$9,764	\$8,348	38%
08-09	765	55%	\$11,785	\$9,977	42%
09-10	819	57%	\$12,531	\$10,462	43%
10-11	917	58%	\$13,626	\$11,155	45%
11-12	1,065	62%	\$13,747	\$10,932	44%
12-13	1,057	63%	\$13,773	\$10,773	44%
13-14	1,047	62%	\$14,502	\$11,170	45%
14-15	981	59%	\$13,994	\$10,728	44%

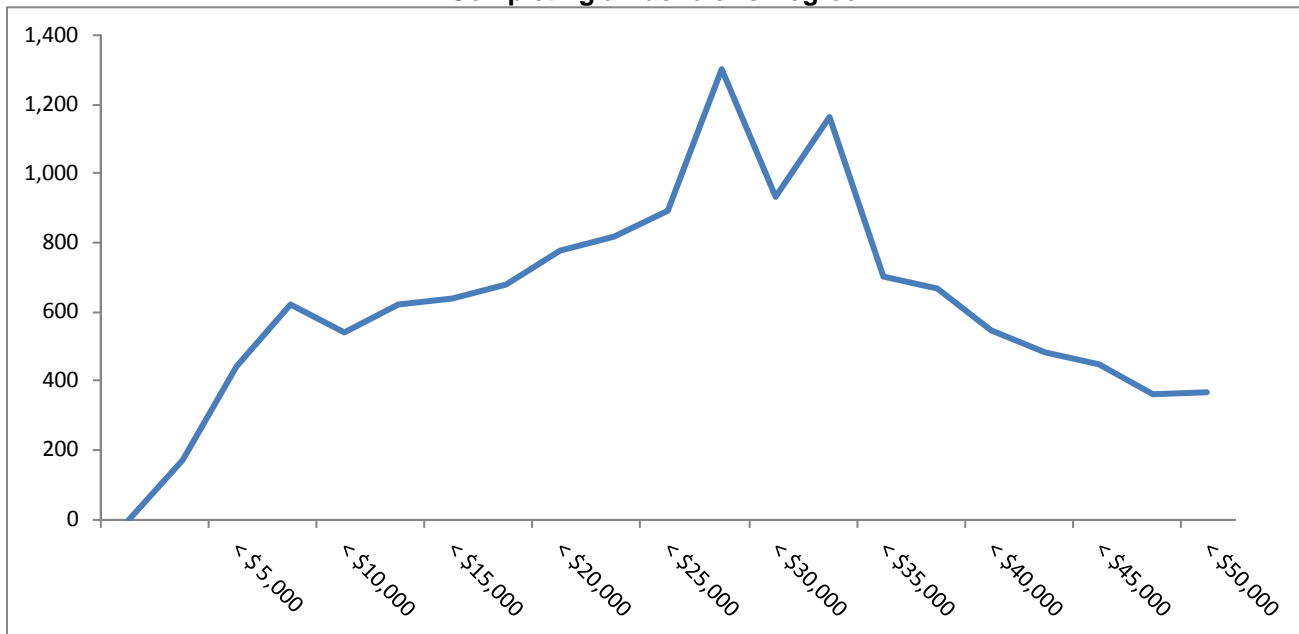
Cumulative loan debt among borrowers at the UW four-year institutions was highest at UW-Milwaukee (Table 16). The highest percentage of Wisconsin resident graduates with loan debt was at UW-Superior (82%), while the lowest was at UW-Madison (59%).

**Table 16**  
**Cumulative Student Loan Debt for 2014-15**  
**UW System Wisconsin Resident Undergraduates Completing a Bachelor's Degree**

	Loan Recipients	% Grads with Loan Debt	Average Debt of Borrowers	Average Debt of all Graduates
UW-Madison	2,520	59%	\$29,182	\$17,106
UW-Milwaukee	2,724	80%	\$34,094	\$27,331
UW-Eau Claire	1,149	73%	\$27,502	\$20,179
UW-Green Bay	876	74%	\$26,468	\$19,682
UW-La Crosse	1,146	73%	\$29,968	\$21,833
UW-Oshkosh	1,545	80%	\$32,517	\$25,990
UW-Parkside	446	77%	\$31,311	\$24,160
UW-Platteville	796	75%	\$28,647	\$21,533
UW-River Falls	451	76%	\$28,073	\$21,459
UW-Stevens Point	1,339	79%	\$30,159	\$23,910
UW-Stout	889	78%	\$30,158	\$23,642
UW-Superior	185	82%	\$30,509	\$24,974
UW-Whitewater	1,402	77%	\$32,851	\$25,432
UW Colleges	1	50%	\$24,545	\$12,273
Total	15,469	74%	\$30,650	\$22,539

Figure 2 shows the distribution of cumulative loan debt among UW System Wisconsin resident undergraduates completing a degree. There is a sizable group of graduates with comparatively high levels of debt. Of all graduates with debt in 2014-15, 2,272 students, or 15 percent, had cumulative loan debt greater than \$50,000.

**Figure 2**  
**Cumulative Student Loan Debt for 2014-15**  
**UW System Wisconsin Resident Undergraduates**  
**Completing a Bachelor's Degree**



Although the percentage of students graduating with loan debt has increased in the past several years, the three-year student loan default rate for UW students (4.6%) remains low (Table 16). The student loan default rate for UW graduates is significantly lower than the student loan default rate of all borrowers nationally (11.8%), showing that the majority of student loan borrowers are committed to making their loan payments.

**Table 17**  
**Student Loan Three-Year Default Rates**  
**UW System and National Data**

	2009	2010	2011	2012
<b>UW System</b>	4.5%	5.3%	5.2%	4.6%
<b>National</b>	13.4%	14.7%	13.7%	11.8%

*Source: U.S. Department of Education.*

*See technical notes for an explanation three-year default rates. Two-year default rates are no longer available.*

**Appendix A**  
**UW System Financial Aid Dollars (in Millions) by Institution**  
**2014-15**

	Grants						Loans		Work Study		Total	
	Fed.	State	Inst.	Other	Total	%	\$M	%	\$M	%	\$M	%
UW-Madison	\$21.9	\$14.1	\$78.3	\$21.3	\$135.5	29%	\$196.1	23%	\$4.0	33%	\$335.6	25%
UW-Milwaukee	\$52.9	\$20.2	\$13.1	\$3.3	\$89.6	19%	\$166.7	19%	\$1.1	9%	\$257.4	19%
UW-Eau Claire	\$12.0	\$6.2	\$4.9	\$3.4	\$26.5	6%	\$48.8	6%	\$1.3	11%	\$76.5	6%
UW-Green Bay	\$9.2	\$4.7	\$3.3	\$1.7	\$18.9	4%	\$29.2	3%	\$0.3	3%	\$48.4	4%
UW-La Crosse	\$9.5	\$5.5	\$2.1	\$4.1	\$21.2	5%	\$54.6	6%	\$0.4	4%	\$76.2	6%
UW-Oshkosh	\$14.5	\$7.7	\$1.6	\$2.3	\$26.1	6%	\$61.7	7%	\$0.9	7%	\$88.7	7%
UW-Parkside	\$9.0	\$4.1	\$0.4	\$0.6	\$14.0	3%	\$22.1	3%	\$0.2	1%	\$36.3	3%
UW-Platteville	\$9.3	\$4.4	\$2.7	\$2.4	\$18.8	4%	\$43.2	5%	\$0.5	4%	\$62.5	5%
UW-River Falls	\$7.3	\$2.2	\$1.0	\$1.8	\$12.3	3%	\$32.0	4%	\$0.4	3%	\$44.7	3%
UW-Stevens Point	\$13.6	\$6.4	\$1.1	\$4.8	\$25.9	5%	\$51.2	6%	\$1.2	10%	\$78.3	6%
UW-Stout	\$11.1	\$4.4	\$1.5	\$2.1	\$19.1	4%	\$49.6	6%	\$0.8	6%	\$69.5	5%
UW-Superior	\$4.6	\$1.4	\$1.8	\$0.7	\$8.5	2%	\$15.2	2%	\$0.4	3%	\$24.2	2%
UW-Whitewater	\$14.4	\$7.4	\$1.5	\$3.2	\$26.5	6%	\$72.5	8%	\$0.0	0%	\$99.1	7%
UW Colleges	\$17.0	\$8.4	\$0.8	\$1.6	\$27.8	6%	\$25.3	3%	\$0.5	4%	\$53.6	4%
<b>UW System</b>	<b>\$206.1</b>	<b>\$97.2</b>	<b>\$114.0</b>	<b>\$53.4</b>	<b>\$470.7</b>	<b>100%</b>	<b>\$868.2</b>	<b>100%</b>	<b>\$12.0</b>	<b>100%</b>	<b>\$1,350.9</b>	<b>100%</b>

Notes: Percentages may not add to 100% due to rounding.  
Table includes all UW System students.  
All dollars are in millions.

**Appendix B  
UW System Financial Aid Recipients by Institution, Level, and Residency for 2014-15**

UW System		Undergraduate		Graduate		Total
		Resident	Non-Resident	Resident	Non-Resident	
Totals	# Total Aided	92,025	19,598	7,342	4,138	123,103
	% of UWS Total Aided	74.8%	15.9%	6.0%	3.4%	100.0%
	% of UWS Enrollment	74.2%	59.3%	56.9%	37.7%	68.0%
Grants	# Grant Recipients	67,508	11,587	2,633	2,267	83,995
	% of UWS Grant Recips	80.4%	13.8%	3.1%	2.7%	100.0%
	% of UWS Enrollment	54.4%	35.1%	20.4%	20.6%	46.4%
Loans	# Borrowers	72,533	15,438	6,117	2,473	96,561
	% of UWS Borrowers	75.1%	16.0%	6.3%	2.6%	100.0%
	% of UWS Enrollment	58.5%	46.7%	47.4%	22.5%	53.4%
UW-Madison		Undergraduate		Graduate		Total
		Resident	Non-Resident	Resident	Non-Resident	
Totals	# Total Aided	13,352	5,020	2,844	2,271	23,487
	% of UWS Total Aided w/in Category	14.5%	25.6%	38.7%	54.9%	19.1%
	% of Institution Total Aided	56.8%	21.4%	12.1%	9.7%	100.0%
	% of UWS Enrollment w/in Category	10.8%	15.2%	22.0%	20.7%	13.0%
	% of Institution Enrollment w/in Category	68.6%	43.6%	61.9%	31.2%	54.8%
Grants	# Grant Recipients	10,598	3,483	1,227	1,447	16,755
	% of UWS Grant Recips w/in Category	15.7%	30.1%	46.6%	63.8%	19.9%
	% of Institution Grant Recips	63.3%	20.8%	7.3%	8.6%	100.0%
	% of UWS Enrollment w/in Category	8.5%	10.5%	9.5%	13.2%	9.3%
	% of Institution Enrollment w/in Category	54.4%	30.2%	26.7%	19.9%	39.1%
Loans	# Borrowers	8,702	3,079	2,370	1,196	15,347
	% of UWS Borrowers w/in Category	12.0%	19.9%	38.7%	48.4%	15.9%
	% of Institution Borrowers	56.7%	20.1%	15.4%	7.8%	100.0%
	% of UWS Enrollment w/in Category	7.0%	9.3%	18.4%	10.9%	8.5%
	% of Institution Enrollment w/in Category	44.7%	26.7%	51.6%	16.4%	35.8%
UW-Milwaukee		Undergraduate		Graduate		Total
		Resident	Non-Resident	Resident	Non-Resident	
Totals	# Total Aided	16,851	1,368	2,090	953	21,262
	% of UWS Total Aided w/in Category	18.3%	7.0%	28.5%	23.0%	17.3%
	% of Institution Total Aided	79.3%	6.4%	9.8%	4.5%	100.0%
	% of UWS Enrollment w/in Category	13.6%	4.1%	16.2%	8.7%	11.7%
	% of Institution Enrollment w/in Category	81.6%	56.3%	63.7%	57.7%	75.9%
Grants	# Grant Recipients	12,247	1,005	706	586	14,544
	% of UWS Grant Recips w/in Category	18.1%	8.7%	26.8%	25.8%	17.3%
	% of Institution Grant Recips	84.2%	6.9%	4.9%	4.0%	100.0%
	% of UWS Enrollment w/in Category	9.9%	3.0%	5.5%	5.3%	8.0%
	% of Institution Enrollment w/in Category	59.3%	41.4%	21.5%	35.5%	51.9%
Loans	# Borrowers	14,388	1,078	1,673	478	17,617
	% of UWS Borrowers w/in Category	19.8%	7.0%	27.4%	19.3%	18.2%
	% of Institution Borrowers	81.7%	6.1%	9.5%	2.7%	100.0%
	% of UWS Enrollment w/in Category	11.6%	3.3%	13.0%	4.4%	9.7%
	% of Institution Enrollment w/in Category	69.7%	44.4%	51.0%	29.0%	62.9%

**Appendix B  
UW System Financial Aid Recipients by Institution, Level, and Residency for 2014-15**

		Undergraduate		Graduate		Total
		Resident	Non-Resident	Resident	Non-Resident	
<b>UW-Eau Claire</b>						
<b>Totals</b>	# Total Aided	5,892	1,854	194	62	8,002
	% of UWS Total Aided w/in Category	6.4%	9.5%	2.6%	1.5%	6.5%
	% of Institution Total Aided	73.6%	23.2%	2.4%	0.8%	100.0%
	% of UWS Enrollment w/in Category	4.8%	5.6%	1.5%	0.6%	4.4%
	% of Institution Enrollment w/in Category	80.0%	66.2%	50.1%	44.9%	74.8%
<b>Grants</b>	# Grant Recipients	4,482	926	85	22	5,515
	% of UWS Grant Recips w/in Category	6.6%	8.0%	3.2%	1.0%	6.6%
	% of Institution Grant Recips	81.3%	16.8%	1.5%	0.4%	100.0%
	% of UWS Enrollment w/in Category	3.6%	2.8%	0.7%	0.2%	3.0%
	% of Institution Enrollment w/in Category	60.9%	33.0%	22.0%	15.9%	51.6%
<b>Loans</b>	# Borrowers	4,640	1,587	149	51	6,427
	% of UWS Borrowers w/in Category	6.4%	10.3%	2.4%	2.1%	6.7%
	% of Institution Borrowers	72.2%	24.7%	2.3%	0.8%	100.0%
	% of UWS Enrollment w/in Category	3.7%	4.8%	1.2%	0.5%	3.6%
	% of Institution Enrollment w/in Category	63.0%	56.6%	38.5%	37.0%	60.1%
<b>UW-Green Bay</b>						
		Undergraduate		Graduate		Total
		Resident	Non-Resident	Resident	Non-Resident	
<b>Totals</b>	# Total Aided	4,441	323	84	16	4,864
	% of UWS Total Aided w/in Category	4.8%	1.6%	1.1%	0.4%	4.0%
	% of Institution Total Aided	91.3%	6.6%	1.7%	0.3%	100.0%
	% of UWS Enrollment w/in Category	3.6%	1.0%	0.7%	0.1%	2.7%
	% of Institution Enrollment w/in Category	71.7%	67.9%	39.3%	41.0%	70.3%
<b>Grants</b>	# Grant Recipients	3,396	232	36	3	3,667
	% of UWS Grant Recips w/in Category	5.0%	2.0%	1.4%	0.1%	4.4%
	% of Institution Grant Recips	92.6%	6.3%	1.0%	0.1%	100.0%
	% of UWS Enrollment w/in Category	3.6%	1.0%	0.7%	0.1%	2.7%
	% of Institution Enrollment w/in Category	54.8%	48.7%	16.8%	7.7%	53.0%
<b>Loans</b>	# Borrowers	3,568	211	67	14	3,860
	% of UWS Borrowers w/in Category	4.9%	1.4%	1.1%	0.6%	4.0%
	% of Institution Borrowers	92.4%	5.5%	1.7%	0.4%	100.0%
	% of UWS Enrollment w/in Category	2.9%	0.6%	0.5%	0.1%	2.1%
	% of Institution Enrollment w/in Category	57.6%	44.3%	31.3%	35.9%	55.8%
<b>UW-La Crosse</b>						
		Undergraduate		Graduate		Total
		Resident	Non-Resident	Resident	Non-Resident	
<b>Totals</b>	# Total Aided	6,166	1,299	347	181	7,993
	% of UWS Total Aided w/in Category	6.7%	6.6%	4.7%	4.4%	6.5%
	% of Institution Total Aided	77.1%	16.3%	4.3%	2.3%	100.0%
	% of UWS Enrollment w/in Category	5.0%	3.9%	2.7%	1.6%	4.4%
	% of Institution Enrollment w/in Category	78.1%	67.6%	60.2%	66.3%	75.0%
<b>Grants</b>	# Grant Recipients	4,318	678	82	57	5,135
	% of UWS Grant Recips w/in Category	6.4%	5.9%	3.1%	2.5%	6.1%
	% of Institution Grant Recips	84.1%	13.2%	1.6%	1.1%	100.0%
	% of UWS Enrollment w/in Category	5.0%	3.9%	2.7%	1.6%	4.4%
	% of Institution Enrollment w/in Category	54.7%	35.3%	14.2%	20.9%	48.2%
<b>Loans</b>	# Borrowers	4,930	1,028	322	163	6,443
	% of UWS Borrowers w/in Category	6.8%	6.7%	5.3%	6.6%	6.7%
	% of Institution Borrowers	76.5%	16.0%	5.0%	2.5%	100.0%
	% of UWS Enrollment w/in Category	4.0%	3.1%	2.5%	1.5%	3.6%
	% of Institution Enrollment w/in Category	62.5%	53.5%	55.9%	59.7%	60.4%

**Appendix B**  
**UW System Financial Aid Recipients by Institution, Level, and Residency for 2014-15**

		Undergraduate		Graduate		Total
<b>UW-Oshkosh</b>						
<b>Totals</b>	# Total Aided	7,884	385	491	24	8,784
	% of UWS Total Aided w/in Category	8.6%	2.0%	6.7%	0.6%	7.1%
	% of Institution Total Aided	89.8%	4.4%	5.6%	0.3%	100.0%
	% of UWS Enrollment w/in Category	6.4%	1.2%	3.8%	0.2%	4.9%
	% of Institution Enrollment w/in Category	62.4%	56.3%	43.1%	26.7%	60.4%
<b>Grants</b>	# Grant Recipients	5,315	166	177	3	5,661
	% of UWS Grant Recips w/in Category	7.9%	1.4%	6.7%	0.1%	6.7%
	% of Institution Grant Recips	93.9%	2.9%	3.1%	0.1%	100.0%
	% of UWS Enrollment w/in Category	4.3%	0.5%	1.4%	0.0%	3.1%
	% of Institution Enrollment w/in Category	42.1%	24.3%	15.5%	3.3%	38.9%
<b>Loans</b>	# Borrowers	6,668	336	363	21	7,388
	% of UWS Borrowers w/in Category	9.2%	2.2%	5.9%	0.8%	7.7%
	% of Institution Borrowers	90.3%	4.5%	4.9%	0.3%	100.0%
	% of UWS Enrollment w/in Category	5.4%	1.0%	2.8%	0.2%	4.1%
	% of Institution Enrollment w/in Category	52.8%	49.1%	31.8%	23.3%	50.8%
<b>UW-Parkside</b>						
		Undergraduate		Graduate		Total
		Resident	Non-Resident	Resident	Non-Resident	
<b>Totals</b>	# Total Aided	3,156	522	46	8	3,732
	% of UWS Total Aided w/in Category	3.4%	2.7%	0.6%	0.2%	3.0%
	% of Institution Total Aided	84.6%	14.0%	1.2%	0.2%	100.0%
	% of UWS Enrollment w/in Category	2.5%	1.6%	0.4%	0.1%	2.1%
	% of Institution Enrollment w/in Category	84.1%	75.2%	43.8%	25.8%	81.4%
<b>Grants</b>	# Grant Recipients	2,266	329	13	6	2,614
	% of UWS Grant Recips w/in Category	3.4%	2.8%	0.5%	0.3%	3.1%
	% of Institution Grant Recips	86.7%	12.6%	0.5%	0.2%	100.0%
	% of UWS Enrollment w/in Category	1.8%	1.0%	0.1%	0.1%	1.4%
	% of Institution Enrollment w/in Category	60.4%	47.4%	12.4%	19.4%	57.0%
<b>Loans</b>	# Borrowers	2,540	432	43	2	3,017
	% of UWS Borrowers w/in Category	3.5%	2.8%	0.7%	0.1%	3.1%
	% of Institution Borrowers	84.2%	14.3%	1.4%	0.1%	100.0%
	% of UWS Enrollment w/in Category	2.0%	1.3%	0.3%	0.0%	1.7%
	% of Institution Enrollment w/in Category	67.7%	62.2%	41.0%	6.5%	65.8%
<b>UW-Platteville</b>						
		Undergraduate		Graduate		Total
		Resident	Non-Resident	Resident	Non-Resident	
<b>Totals</b>	# Total Aided	4,806	1,508	195	122	6,631
	% of UWS Total Aided w/in Category	5.2%	7.7%	2.7%	2.9%	5.4%
	% of Institution Total Aided	72.5%	22.7%	2.9%	1.8%	100.0%
	% of UWS Enrollment w/in Category	3.9%	4.6%	1.5%	1.1%	3.7%
	% of Institution Enrollment w/in Category	79.6%	75.0%	45.7%	28.6%	74.5%
<b>Grants</b>	# Grant Recipients	3,384	825	39	1	4,249
	% of UWS Grant Recips w/in Category	5.0%	7.1%	1.5%	0.0%	5.1%
	% of Institution Grant Recips	79.6%	19.4%	0.9%	0.0%	100.0%
	% of UWS Enrollment w/in Category	2.7%	2.5%	0.3%	0.0%	2.3%
	% of Institution Enrollment w/in Category	56.1%	41.0%	9.1%	0.2%	47.7%
<b>Loans</b>	# Borrowers	3,855	1,319	183	122	5,479
	% of UWS Borrowers w/in Category	5.3%	8.5%	3.0%	4.9%	5.7%
	% of Institution Borrowers	70.4%	24.1%	3.3%	2.2%	100.0%
	% of UWS Enrollment w/in Category	3.1%	4.0%	1.4%	1.1%	3.0%
	% of Institution Enrollment w/in Category	63.9%	65.6%	42.9%	28.6%	61.6%



**Appendix B  
UW System Financial Aid Recipients by Institution, Level, and Residency for 2014-15**

		Undergraduate		Graduate		Total
		Resident	Non-Resident	Resident	Non-Resident	
<b>UW-River Falls</b>						
<b>Totals</b>	# Total Aided	2,198	2,199	122	156	4,675
	% of UWS Total Aided w/in Category	2.4%	11.2%	1.7%	3.8%	3.8%
	% of Institution Total Aided	47.0%	47.0%	2.6%	3.3%	100.0%
	% of UWS Enrollment w/in Category	1.8%	6.7%	0.9%	1.4%	2.6%
	% of Institution Enrollment w/in Category	83.9%	70.9%	52.8%	67.2%	75.6%
<b>Grants</b>	# Grant Recipients	1,625	1,185	14	20	2,844
	% of UWS Grant Recips w/in Category	2.4%	10.2%	0.5%	0.9%	3.4%
	% of Institution Grant Recips	57.1%	41.7%	0.5%	0.7%	100.0%
	% of UWS Enrollment w/in Category	1.3%	3.6%	0.1%	0.2%	1.6%
	% of Institution Enrollment w/in Category	62.0%	38.2%	6.1%	8.6%	46.0%
<b>Loans</b>	# Borrowers	1,734	1,941	117	146	3,938
	% of UWS Borrowers w/in Category	2.4%	12.6%	1.9%	5.9%	4.1%
	% of Institution Borrowers	44.0%	49.3%	3.0%	3.7%	100.0%
	% of UWS Enrollment w/in Category	1.4%	5.9%	0.9%	1.3%	2.2%
	% of Institution Enrollment w/in Category	66.2%	62.6%	50.6%	62.9%	63.7%
<b>UW-Stevens Point</b>						
		Undergraduate		Graduate		Total
		Resident	Non-Resident	Resident	Non-Resident	
<b>Totals</b>	# Total Aided	6,522	717	101	34	7,374
	% of UWS Total Aided w/in Category	7.1%	3.7%	1.4%	0.8%	6.0%
	% of Institution Total Aided	88.4%	9.7%	1.4%	0.5%	100.0%
	% of UWS Enrollment w/in Category	5.3%	2.2%	0.8%	0.3%	4.1%
	% of Institution Enrollment w/in Category	82.2%	67.4%	42.8%	38.6%	79.1%
<b>Grants</b>	# Grant Recipients	4,767	395	39	13	5,214
	% of UWS Grant Recips w/in Category	7.1%	3.4%	1.5%	0.6%	6.2%
	% of Institution Grant Recips	91.4%	7.6%	0.7%	0.2%	100.0%
	% of UWS Enrollment w/in Category	3.8%	1.2%	0.3%	0.1%	2.9%
	% of Institution Enrollment w/in Category	60.1%	37.1%	16.5%	14.8%	55.9%
<b>Loans</b>	# Borrowers	5,600	654	95	32	6,381
	% of UWS Borrowers w/in Category	7.7%	4.2%	1.6%	1.3%	6.6%
	% of Institution Borrowers	87.8%	10.2%	1.5%	0.5%	100.0%
	% of UWS Enrollment w/in Category	4.5%	2.0%	0.7%	0.3%	3.5%
	% of Institution Enrollment w/in Category	70.6%	61.5%	40.3%	36.4%	68.5%
<b>UW-Stout</b>						
		Undergraduate		Graduate		Total
		Resident	Non-Resident	Resident	Non-Resident	
<b>Totals</b>	# Total Aided	4,476	1,923	318	153	6,870
	% of UWS Total Aided w/in Category	4.9%	9.8%	4.3%	3.7%	5.6%
	% of Institution Total Aided	65.2%	28.0%	4.6%	2.2%	100.0%
	% of UWS Enrollment w/in Category	3.6%	5.8%	2.5%	1.4%	3.8%
	% of Institution Enrollment w/in Category	82.1%	68.6%	47.7%	34.0%	73.3%
<b>Grants</b>	# Grant Recipients	3,187	910	97	65	4,259
	% of UWS Grant Recips w/in Category	4.7%	7.9%	3.7%	2.9%	5.1%
	% of Institution Grant Recips	74.8%	21.4%	2.3%	1.5%	100.0%
	% of UWS Enrollment w/in Category	2.6%	2.8%	0.8%	0.6%	2.4%
	% of Institution Enrollment w/in Category	58.5%	32.5%	14.5%	14.4%	45.4%
<b>Loans</b>	# Borrowers	3,802	1,727	281	117	5,927
	% of UWS Borrowers w/in Category	5.2%	11.2%	4.6%	4.7%	6.1%
	% of Institution Borrowers	64.1%	29.1%	4.7%	2.0%	100.0%
	% of UWS Enrollment w/in Category	3.1%	5.2%	2.2%	1.1%	3.3%
	% of Institution Enrollment w/in Category	69.8%	61.6%	42.1%	26.0%	63.2%

**Appendix B  
UW System Financial Aid Recipients by Institution, Level, and Residency for 2014-15**

		Undergraduate		Graduate		Total
		Resident	Non-Resident	Resident	Non-Resident	
<b>UW-Superior</b>						
<b>Totals</b>	# Total Aided	1,146	1,068	40	57	2,311
	% of UWS Total Aided w/in Category	1.2%	5.4%	0.5%	1.4%	1.9%
	% of Institution Total Aided	49.6%	46.2%	1.7%	2.5%	100.0%
	% of UWS Enrollment w/in Category	0.9%	3.2%	0.3%	0.5%	1.3%
	% of Institution Enrollment w/in Category	91.8%	88.6%	60.6%	83.8%	89.3%
<b>Grants</b>	# Grant Recipients	952	732	11	5	1,700
	% of UWS Grant Recips w/in Category	1.4%	6.3%	0.4%	0.2%	2.0%
	% of Institution Grant Recips	56.0%	43.1%	0.6%	0.3%	100.0%
	% of UWS Enrollment w/in Category	0.8%	2.2%	0.1%	0.0%	0.9%
	% of Institution Enrollment w/in Category	76.2%	60.7%	16.7%	7.4%	65.7%
<b>Loans</b>	# Borrowers	914	878	35	56	1,883
	% of UWS Borrowers w/in Category	1.3%	5.7%	0.6%	2.3%	2.0%
	% of Institution Borrowers	48.5%	46.6%	1.9%	3.0%	100.0%
	% of UWS Enrollment w/in Category	0.7%	2.7%	0.3%	0.5%	1.0%
	% of Institution Enrollment w/in Category	73.2%	72.8%	53.0%	82.4%	72.7%
<b>UW-Whitewater</b>						
		Undergraduate		Graduate		Total
		Resident	Non-Resident	Resident	Non-Resident	
<b>Totals</b>	# Total Aided	7,283	1,169	470	101	9,023
	% of UWS Total Aided w/in Category	7.9%	6.0%	6.4%	2.4%	7.3%
	% of Institution Total Aided	80.7%	13.0%	5.2%	1.1%	100.0%
	% of UWS Enrollment w/in Category	5.9%	3.5%	3.6%	0.9%	5.0%
	% of Institution Enrollment w/in Category	78.1%	71.2%	48.3%	47.0%	74.2%
<b>Grants</b>	# Grant Recipients	4,877	523	107	39	5,546
	% of UWS Grant Recips w/in Category	7.2%	4.5%	4.1%	1.7%	6.6%
	% of Institution Grant Recips	87.9%	9.4%	1.9%	0.7%	100.0%
	% of UWS Enrollment w/in Category	3.9%	1.6%	0.8%	0.4%	3.1%
	% of Institution Enrollment w/in Category	52.3%	31.8%	11.0%	18.1%	45.6%
<b>Loans</b>	# Borrowers	6,297	1,028	419	75	7,819
	% of UWS Borrowers w/in Category	8.7%	6.7%	6.8%	3.0%	8.1%
	% of Institution Borrowers	80.5%	13.1%	5.4%	1.0%	100.0%
	% of UWS Enrollment w/in Category	5.1%	3.1%	3.2%	0.7%	4.3%
	% of Institution Enrollment w/in Category	67.5%	62.6%	43.1%	34.9%	64.3%
<b>UW Colleges</b>						
		Undergraduate		Graduate		Total
		Resident	Non-Resident	Resident	Non-Resident	
<b>Totals</b>	# Total Aided	7,852	243	---	---	8,095
	% of UWS Total Aided w/in Category	8.5%	1.2%	---	---	6.6%
	% of Institution Total Aided	97.0%	3.0%	---	---	100.0%
	% of UWS Enrollment w/in Category	6.3%	0.7%	---	---	4.5%
	% of Institution Enrollment w/in Category	58.3%	35.0%	---	---	57.1%
<b>Grants</b>	# Grant Recipients	6,094	198	---	---	6,292
	% of UWS Grant Recips w/in Category	9.0%	1.7%	---	---	7.5%
	% of Institution Grant Recips	96.9%	3.1%	---	---	100.0%
	% of UWS Enrollment w/in Category	4.9%	0.6%	---	---	3.5%
	% of Institution Enrollment w/in Category	45.2%	28.5%	---	---	44.4%
<b>Loans</b>	# Borrowers	4,895	140	---	---	5,035
	% of UWS Borrowers w/in Category	6.7%	0.9%	---	---	5.2%
	% of Institution Borrowers	97.2%	2.8%	---	---	100.0%
	% of UWS Enrollment w/in Category	3.9%	0.4%	---	---	2.8%
	% of Institution Enrollment w/in Category	36.3%	20.2%	---	---	35.5%

**Appendix C**  
**UW System Financial Aid Dollars by Institution, Level, and Residency, 2014-15**

		Undergraduate		Graduate		Total
		Resident	Non-Resident	Resident	Non-Resident	
<b>UW System</b>	Total	\$930,738,727	\$232,152,756	\$126,634,459	\$61,368,923	\$1,350,894,865
	Grants	\$366,078,876	\$75,099,130	\$15,130,447	\$14,399,964	\$470,708,417
	Loans	\$555,758,404	\$154,763,878	\$111,035,976	\$46,633,823	\$868,192,081
<b>UW-Madison</b>	Total	\$154,157,330	\$77,834,500	\$65,023,197	\$38,621,449	\$335,636,476
	Grants	\$77,897,880	\$38,894,132	\$8,143,743	\$10,613,515	\$135,549,270
	Loans	\$73,678,234	\$38,050,513	\$56,589,173	\$27,761,322	\$196,079,242
<b>UW-Milwaukee</b>	Total	\$195,376,440	\$20,861,899	\$30,974,732	\$10,144,071	\$257,357,142
	Grants	\$75,318,034	\$7,514,852	\$4,242,194	\$2,476,573	\$89,551,653
	Loans	\$119,196,857	\$13,269,365	\$26,601,368	\$7,599,211	\$166,666,801
<b>UW-Eau Claire</b>	Total	\$56,516,862	\$16,928,471	\$2,333,092	\$757,231	\$76,535,656
	Grants	\$22,485,118	\$3,409,883	\$464,127	\$101,742	\$26,460,870
	Loans	\$33,054,228	\$13,242,187	\$1,856,729	\$646,991	\$48,800,135
<b>UW-Green Bay</b>	Total	\$43,563,972	\$3,612,680	\$1,020,325	\$232,794	\$48,429,771
	Grants	\$16,829,385	\$1,810,560	\$225,724	\$25,541	\$18,891,210
	Loans	\$26,412,925	\$1,785,331	\$794,601	\$207,253	\$29,200,110
<b>UW-La Crosse</b>	Total	\$55,727,209	\$11,974,837	\$5,348,551	\$3,134,435	\$76,185,032
	Grants	\$18,071,372	\$2,561,825	\$226,157	\$328,272	\$21,187,626
	Loans	\$37,269,921	\$9,356,701	\$5,122,394	\$2,806,163	\$54,555,179
<b>UW-Oshkosh</b>	Total	\$78,689,198	\$4,254,724	\$5,483,978	\$268,966	\$88,696,866
	Grants	\$24,910,673	\$630,421	\$581,173	\$7,333	\$26,129,600
	Loans	\$52,968,751	\$3,587,089	\$4,899,281	\$261,633	\$61,716,754
<b>UW-Parkside</b>	Total	\$30,735,934	\$4,824,099	\$693,336	\$50,900	\$36,304,269
	Grants	\$12,664,656	\$1,309,794	\$29,105	\$9,900	\$14,013,455
	Loans	\$17,913,921	\$3,497,291	\$664,231	\$41,000	\$22,116,443
<b>UW-Platteville</b>	Total	\$43,429,900	\$15,788,819	\$2,070,650	\$1,224,954	\$62,514,323
	Grants	\$15,572,926	\$2,987,836	\$223,751	\$900	\$18,785,413
	Loans	\$27,476,893	\$12,651,725	\$1,846,899	\$1,224,054	\$43,199,571
<b>UW-River Falls</b>	Total	\$20,451,171	\$20,369,896	\$1,778,060	\$2,070,168	\$44,669,295
	Grants	\$7,750,281	\$4,386,564	\$57,249	\$113,673	\$12,307,767
	Loans	\$12,493,342	\$15,807,824	\$1,720,811	\$1,956,495	\$31,978,472
<b>UW-Stevens Point</b>	Total	\$67,712,933	\$8,512,661	\$1,329,935	\$711,767	\$78,267,296
	Grants	\$23,916,630	\$1,791,919	\$77,899	\$89,177	\$25,875,625
	Loans	\$42,772,651	\$6,570,103	\$1,240,427	\$621,046	\$51,204,227
<b>UW-Stout</b>	Total	\$45,020,952	\$19,120,010	\$3,704,372	\$1,634,789	\$69,480,123
	Grants	\$15,180,596	\$3,378,038	\$353,673	\$221,799	\$19,134,106
	Loans	\$29,332,024	\$15,514,347	\$3,333,798	\$1,408,257	\$49,588,426
<b>UW-Superior</b>	Total	\$11,834,289	\$10,894,736	\$553,232	\$891,851	\$24,174,108
	Grants	\$4,874,635	\$3,569,689	\$52,100	\$40,766	\$8,537,190
	Loans	\$6,773,520	\$7,125,194	\$498,817	\$845,623	\$15,243,154
<b>UW-Whitewater</b>	Total	\$75,318,449	\$15,805,860	\$6,320,999	\$1,625,548	\$99,070,856
	Grants	\$23,385,160	\$2,312,038	\$453,552	\$370,773	\$26,521,523
	Loans	\$51,933,289	\$13,493,822	\$5,867,447	\$1,254,775	\$72,549,333
<b>UW Colleges</b>	Total	\$57,287,042	\$1,297,189	---	---	\$58,584,231
	Grants	\$27,221,530	\$541,579	---	---	\$27,763,109
	Loans	\$24,481,848	\$812,386	---	---	\$25,294,234

Notes: Total aid includes Work-Study awards.  
Student with missing residency are included with residents.  
Students with missing classification are included with undergraduates.

**Appendix D**  
**State Grants Received by UW System Students, 2014-15**

Program	\$ Million	Change From 2013-14		Program Description
		\$ Million	%	
Wisconsin Grant	\$58.3	\$0.00	0.0%	Administered by HEAB. For resident undergraduates enrolled in the UW System or WTCS. Students must be WI residents and have financial need.
Talent Incentive Program	\$2.02	-\$0.53	-20.7%	Administered by HEAB. For very needy students enrolled at least half time.
Lawton Undergraduate Minority Retention Grants	\$6.81	\$0.01	0.2%	Administered by UW System. Supplemental grants to minority undergraduate UW students who have both financial need and at least sophomore standing.
Academic Excellence Scholarship	\$4.88	-\$0.11	-2.3%	Administered jointly by HEAB and UW System. A merit-based scholarship program.
Tuition Assistance Grant	\$5.78	-\$0.53	-8.5%	UW System grant for resident undergraduates with need who don't qualify for a WHEG award.
Department of Vocational Rehabilitation	\$1.74	\$0.12	7.5%	Administered by DVR. Provides supplemental funds to DVR customers to cover the cost of attendance.
Indian Student Assistant Grant	\$0.26	\$0.04	17.7%	Administered by HEAB. Provides need based grants to Wisconsin residents of American Indian heritage.
Advanced Opportunity Grant	\$4.12	-\$1.56	-27.5%	Administered by the UW System. Provides grants to multicultural and disadvantaged graduate and professional students.
National Guard Tuition Reimbursement	\$1.88	-\$0.07	-3.5%	Administered by the Department of Military Affairs. Available to Wisconsin National Guard members.
Wisconsin Educational Veterans Benefits	\$0.15	\$0.11	286.6%	Administered by the Department of Veterans Affairs. Programs are available to qualified veterans and family members.
Wisconsin GI Bill Supplemental Payment	\$0.97	-\$0.38	-28.2%	Administered by Department of Veterans Affairs to supplement 9/11 GI Bill benefits.
UW System Study Abroad Grant	\$1.14	\$0.18	19.2%	Administered by the UW System. Provides funding to students in study abroad programs.
Wisconsin Covenant Scholar's Grant	\$8.68	\$1.80	26.1%	HEAB grant awarded for Wisconsin Covenant Scholars.
Other Wisconsin Grants	\$0.46	-\$0.09	-16.5%	Miscellaneous other Wisconsin grants.
<b>Total</b>	<b>\$97.2</b>	<b>-\$1.01</b>	<b>-1.0%</b>	

**Appendix E**  
**Pell Awards to UW System Undergraduates**  
**2014-15**

	<b>Recipients</b>	<b>Avg. Grant</b>	<b>\$M</b>	<b>% UG Enroll</b>
UW-Madison	4,617	\$3,911	\$18.1	15%
UW-Milwaukee	9,032	\$3,941	\$35.6	39%
UW-Eau Claire	2,786	\$3,777	\$10.5	27%
UW-Green Bay	2,199	\$3,566	\$7.8	33%
UW-La Crosse	2,275	\$3,758	\$8.6	23%
UW-Oshkosh	3,499	\$3,754	\$13.1	26%
UW-Parkside	2,170	\$3,837	\$8.3	49%
UW-Platteville	2,335	\$3,775	\$8.8	29%
UW-River Falls	1,814	\$3,808	\$6.9	32%
UW-Stevens Point	3,277	\$3,886	\$12.7	36%
UW-Stout	2,564	\$3,688	\$9.5	31%
UW-Superior	1,153	\$3,674	\$4.2	47%
UW-Whitewater	3,406	\$3,989	\$13.6	31%
UW Colleges	4,854	\$3,376	\$16.4	34%
<b>UW System</b>	<b>45,981</b>	<b>\$3,787</b>	<b>\$174.2</b>	<b>29%</b>

## TECHNICAL NOTES

This Informational Memorandum presents annual data on the amount of financial assistance provided to UW System students. Unless otherwise noted, figures are based on student financial aid data provided to UW System Administration by the UW institutions via the Financial Aid Central Data Request (CDR). The total number of aid recipient figures represent the total number of students (undergraduate, graduate, residents, non-residents) receiving any type of financial aid (with exceptions noted below). Students often receive more than one type of aid, so the cumulative total for students aided through grant, work-study, and loan programs will not equal the grand total. Other important caveats include:

- Details in the text and tables may not add to 100% due to rounding.
- The data reported in this Informational Memorandum do not include graduate assistantships, fellowships, or waivers.
- Work-study includes only dollars provided through the Federal Work-Study program, ROTC, and privately-funded work-study programs. It does not capture non-work-study on-campus or off-campus employment.
- Residency for fee-purposes is determined by the Office of the Registrar at each institution. Non-residents are defined as students with residency status other than “resident” including Minnesota and Michigan reciprocity agreement students. Students without residency information have been included with Wisconsin residents.
- Graduate enrollment includes enrollment in professional programs.
- Financial need is defined by Federal Needs Analysis methodology.
- Dependency status is defined by Federal Needs Analysis methodology and specifications.
- Starting in 2002-03, the WHEG or Wisconsin Grant headcounts and disbursements do not include the Hearing and Visually Handicapped Student Grant.
- According to Federal regulations, graduate students may not be classified as financially dependent for purposes of financial aid. The dependent graduate students in Table 12 are undergraduates enrolled in programs requiring the payment of graduate tuition and fees.
- Cumulative loan debt includes all loans awarded to UW students made by UW financial aid offices. The cumulative debt does not include loans received at non-UW institutions. It does not include loans that are not directed through or reported to the financial aid offices, such as credit cards or home equity loans.
- The Department of Education bases the cohort loan default rate on the percentage of federal loans that go into default within three years of baccalaureate graduation. The previous two-year loan default rate will no longer be reported.