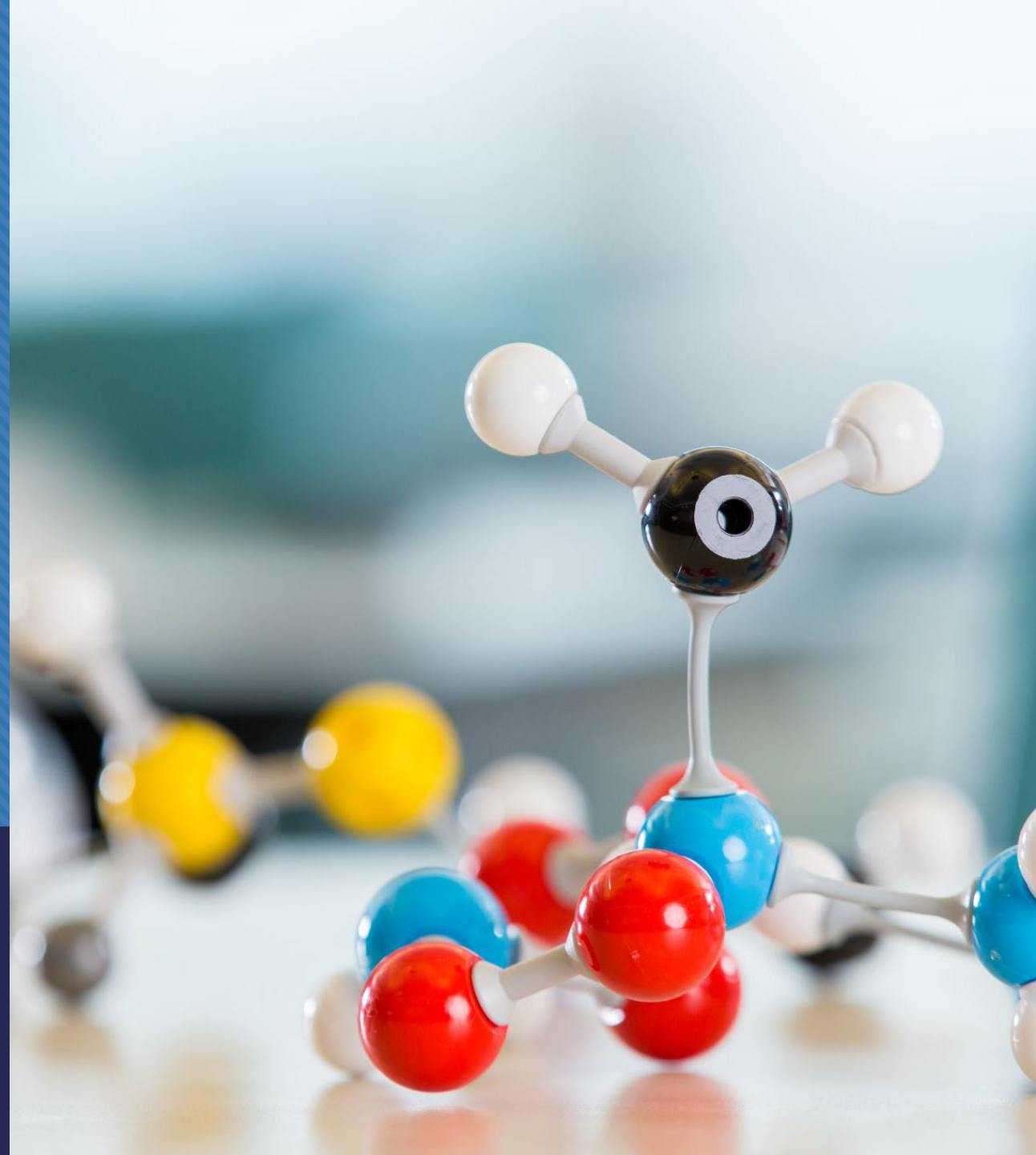


# Prior Learning Assessments and Credit for Prior Learning



Where do our  
students  
learn?



# Beyond the Classroom

Experiential Learning

Life Experience

Work Experience

Professional Training

Military Training

Advanced Placement Exams

# Learning happens everywhere

Credit for Prior Learning (CPL) refers to the granting of credit for subject matter mastery that has been accumulated from outside the degree granting institution.

Prior Learning Assessment (PLA) is a process the subject matter experts use to evaluate competencies.

# Why CPL?



- Recognizes the validity of a variety of prior learning experiences
- Recognizes the inherent mobility of students geographically and among postsecondary educational institutions
- Accelerates the achievement of educational goals while maintaining the integrity of the technical college institutions
- Provides flexibility for students by offering multiple ways of gaining credentials needed to move ahead in their careers
- Leverages prior learning experiences to lessen the cost of duplicative postsecondary education to students, parents, and taxpayers; and
- Responds to local economic needs to validate and expedite the training of skilled workers in a variety of technical fields.

# WTCS Approach

Board Policy & Procedures

Presidents MOU

System- wide Prior Learning Assessments

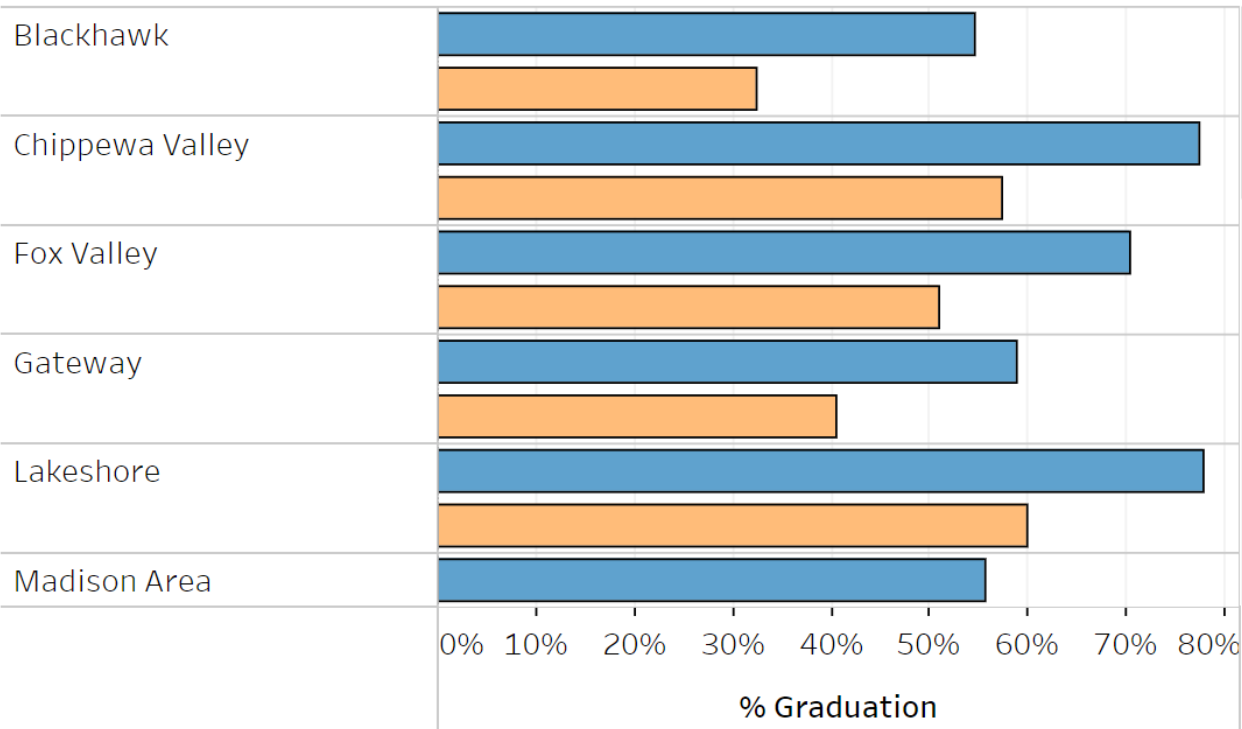
Community of Practice

Focus on Data and Priorities

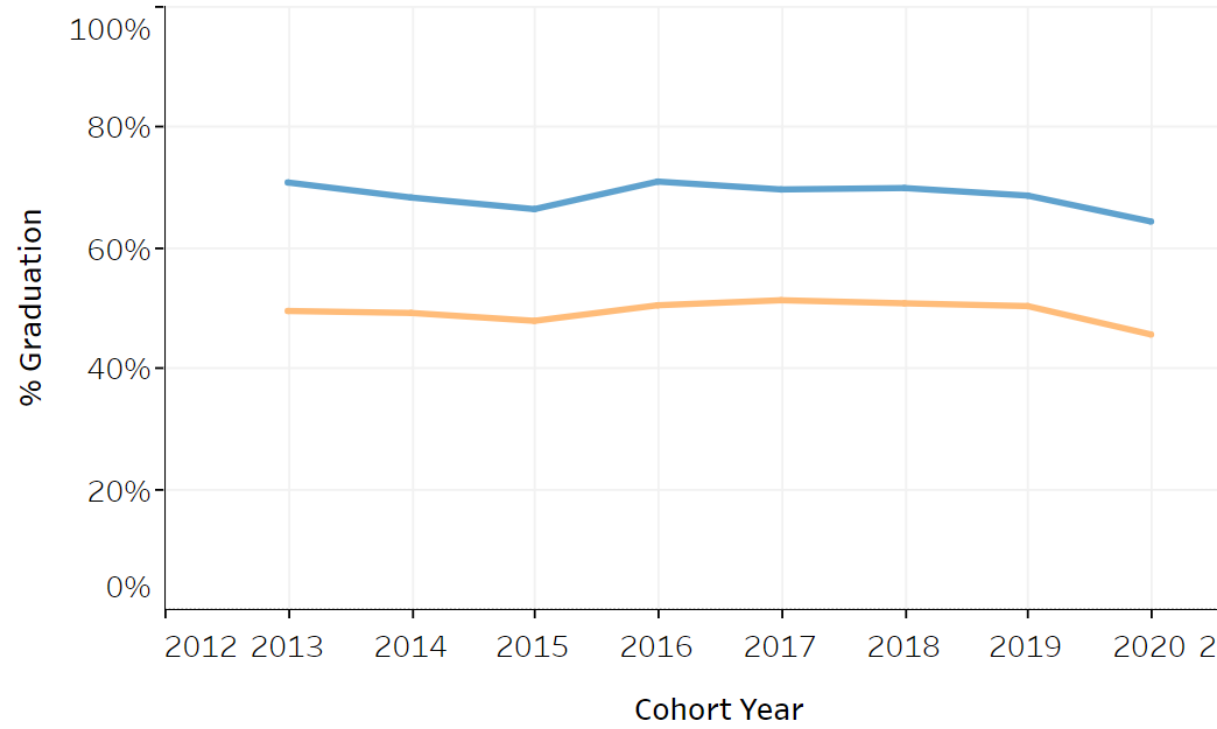
# CPL's Effect on Graduation

Cohort Year: (Multiple values) ▾  
 Graduation Year Selector: Graduation within 4 years ▾  
 Program Aid Code: (Multiple values) ▾  
 Program: (Multiple values) ▾  
 Highest Credential at Enroll...: (Multiple values) ▾  
 G...: ▾  
 Economically Disadvantaged: (Multiple values) ▾

**Graduation for Students with and without CPL Across WTCS**  
 Graduation rate for students with CPL (blue) and without CPL (orange) across WI Technical Colleges.



**Trends in Graduation for Students with and without CPL**  
 Changes in graduation rate over time for students with CPL (blue) and without CPL (orange).





# CPL's Effect on Graduation

Cohort Year

(Multiple values) ▼

Graduation Year Select...

Graduation within 4 years ▼

Program Aid Code

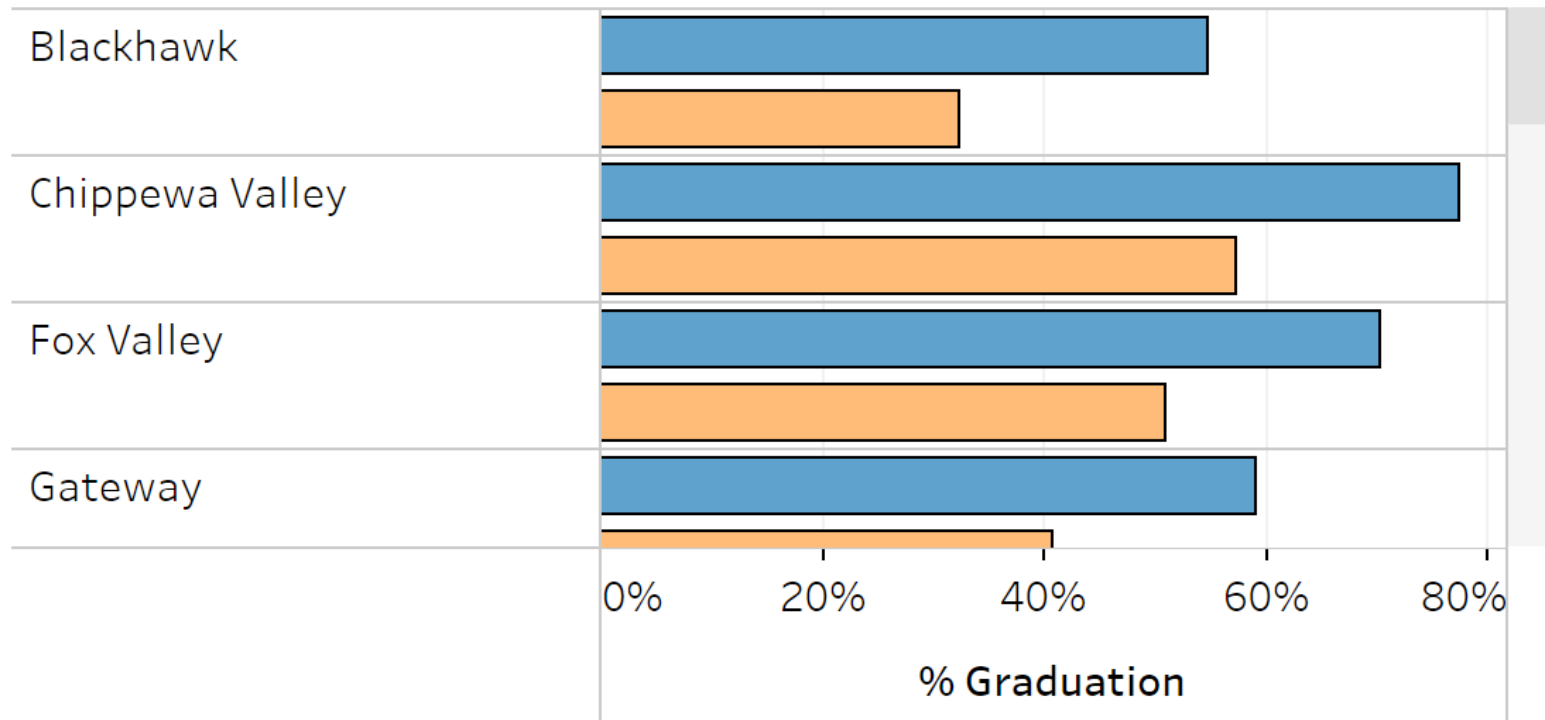
(Multiple values) ▼

Program

(Multiple va

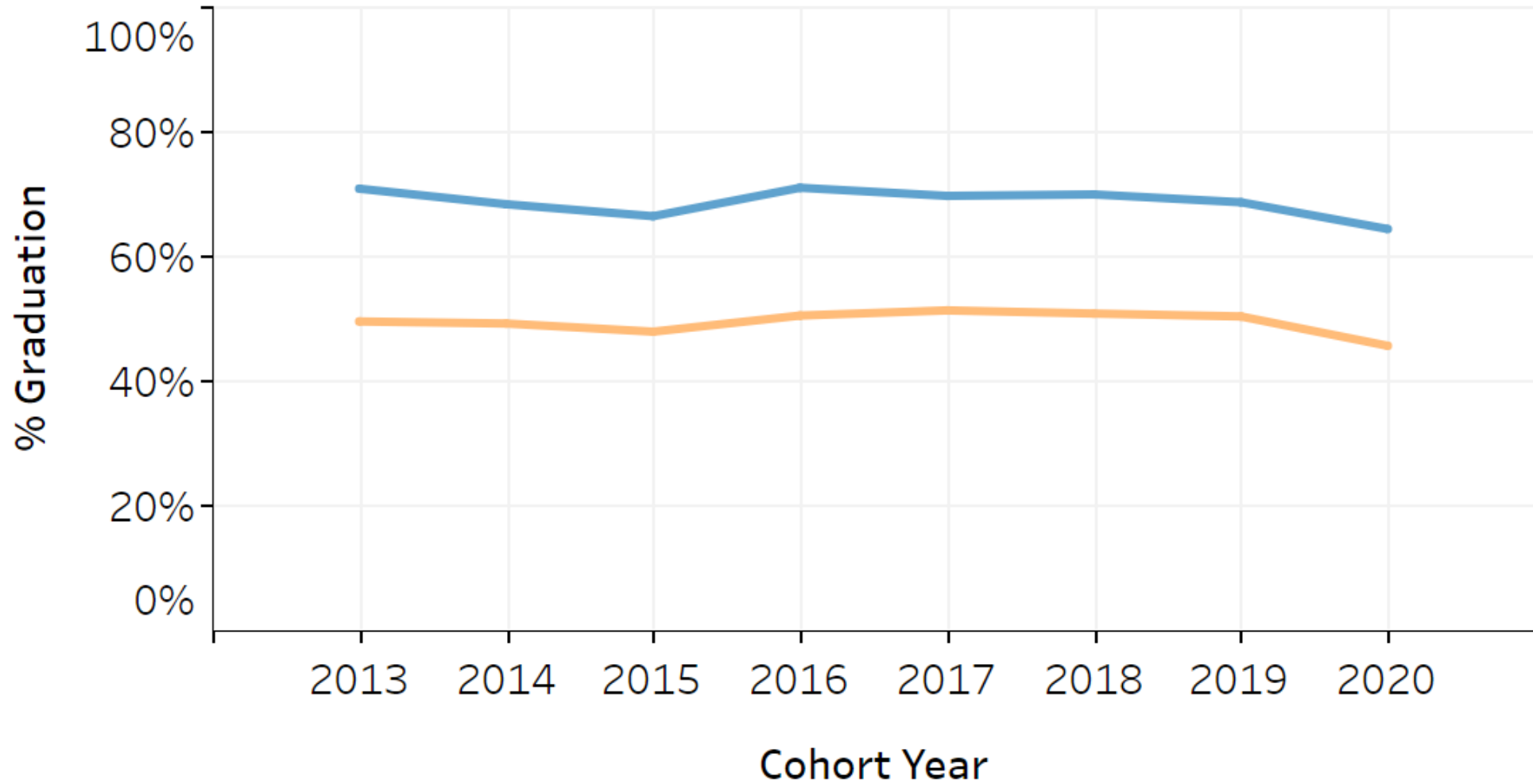
## Graduation for Students with and without CPL Across WTCS

Graduation rate for students with CPL (blue) and without CPL (orange) across WI Technical Colleges.



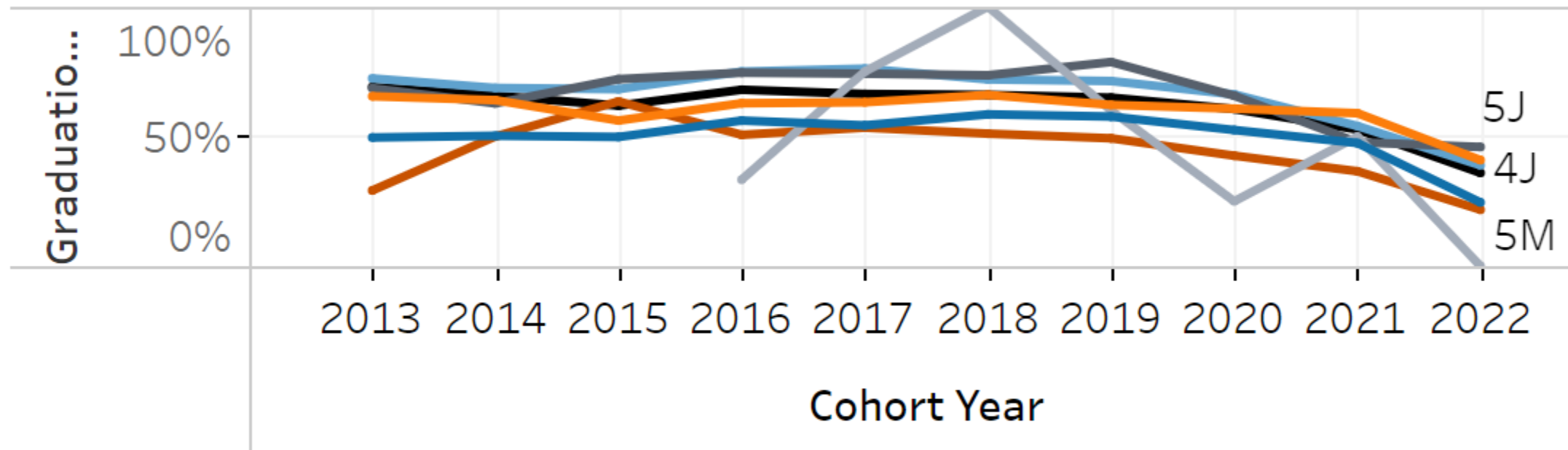
# Trends in Graduation for Students with and without CPL

Changes in graduation rate over time for students with CPL (blue) and without CPL (orange).



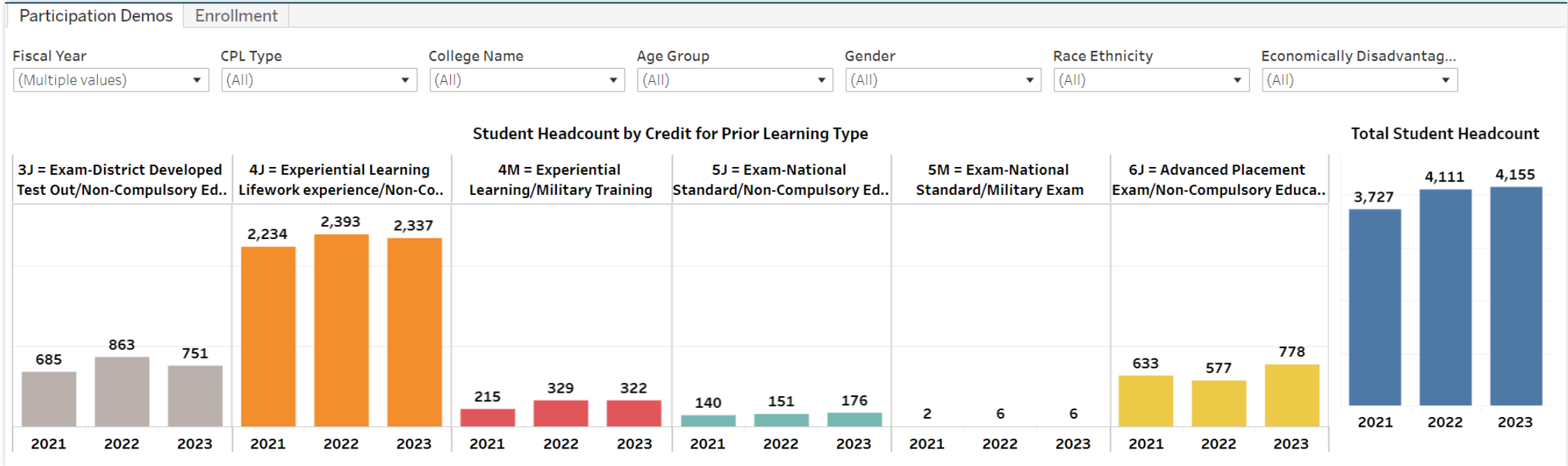
# Trends in Graduation for Students with CPL

Graduation rates over time for students with CPL, shown for each type of CPL (see legend for details).



## Course Recognized Credit Code Description

- Advanced Pl...
  Exam-Natio...
- Exam-Distri...
  Experiential ...
- Exam-Natio...
  Experiential ...



### Student Headcount by Age

	2021	2022	2023
< 18	7.7% 286	8.5% 349	9.7% 401
18-24	39.0% 1,455	40.2% 1,654	42.5% 1,767
25-29	16.2% 602	15.2% 625	13.0% 540
30-34	12.1% 451	11.3% 465	11.1% 463
35-44	15.1% 561	15.5% 638	14.2% 588
45-54	7.7% 286	6.8% 279	7.2% 300
55-61	1.8% 68	1.8% 75	1.6% 66
62 and Older	0.4% 16	0.6% 23	0.6% 26
Unknown	0.1% 2	0.1% 3	0.1% 4

### Student Headcount by Race & Ethnicity

	2021	2022	2023
American Indian/Alaskan Na..	0.8% 28	0.6% 25	0.8% 32
Asian	3.5% 131	2.8% 115	2.8% 118
Black	5.5% 204	6.8% 278	6.4% 266
Hispanic	9.1% 340	10.3% 424	9.9% 412
Multiple	2.5% 93	2.9% 120	2.8% 116
Pacific Islander	0.1% 3	0.1% 4	0.1% 4
Unknown	4.4% 163	3.8% 158	2.6% 110
White	74.2% 2,765	72.7% 2,987	74.5% 3,097

### Student Headcount by Gender

	2021	2022	2023
F	55.9% 2,082	53.4% 2,197	51.7% 2,148
M	41.7% 1,555	45.5% 1,870	47.4% 1,968
U	2.4% 90	1.1% 44	0.9% 39

### Student Headcount by Economically Disadvantaged Status

	2021	2022	2023
Client Refused to ...	31.7% 1,183	33.6% 1,382	33.5% 1,394
No	37.9% 1,412	37.8% 1,553	40.8% 1,696
Yes	30.4% 1,132	28.6% 1,176	25.6% 1,065



## Enrollment by Career Cluster

	2021	2022	2023
01 - Agriculture, Food and ..	72	81	62
02 - Architecture and Cons..	108	77	90
03 - Arts, AudioVisual Tec..	28	37	33
04 - Business Managemen..	451	488	351
05 - Education and Training	20	109	246
06 - Finance	10	54	166
08 - Health Sciences	1,588	1,536	1,786
09 - Hospitality and Touris..	41	50	78
10 - Human Services	204	197	79
11 - Information Technolo..	275	298	285
12 - Law, Public Safety, Co..	1,139	1,365	1,091
13 - Manufacturing	474	103	224
14 - Marketing	164	244	193
15 - Science, Technology, ..	126	211	86
16 - Transportation, Distri..	147	133	258
17 - Not Otherwise Assign..	2,992	3,262	3,504
Unknown	39		

### Enrollment by Instructional Area

	2021	2022	2023
<b>543 - Nursing</b>	1,414	1,356	1,548
<b>890 - General Studies</b>	733	828	769
<b>809 - Social Science</b>	703	623	730
<b>801 - Communication Skills</b>	534	592	615
<b>531 - Emergency Medical ..</b>	625	667	513
<b>804 - Mathematics</b>	357	390	408
<b>807 - Physical Education</b>	113	242	342
<b>504 - Criminal Justice</b>	323	433	337

503 - Fire Technology

### Enrollment by Course

	2023	2022	2021
<b>10-890-155 Gateway to Success</b>	441	468	494
<b>10-809-198 INTRO TO PSYCHOLOGY</b>	270	218	265
<b>30-543-300 NURSING ASSISTANT</b>	209	199	124
<b>20-807-266 WELLNESS TODAY</b>	202	67	4
<b>10-801-136 ENGLISH COMPOSITION 1</b>	175	152	148
<b>10-890-100 College Success: On Course</b>	174	212	161
<b>10-104-128 Professionalism and Success</b>	165	206	116
<b>10-114-121 Personal Money Management all</b>	146	8	
<b>20-801-201 ENGLISH 1</b>	141	121	135



# Panel Discussion

Rob Ecker, Associate Dean, Northwood  
Technical College

Diane Treis-Rusk, Director of Academic  
Programs and Student Learning Assessment,  
UW System

Rosland Briggs-Grossman, Director of  
Academic Excellence Programs, Alverno  
College