

*J*oint *A*dmistrative *C*ommittee on *A*cademic *P*rograms

Transfers from the Wisconsin Technical Colleges to the University of Wisconsin System
April 2006

Prepared by:
The University of Wisconsin System
Office of Policy Analysis and Research
1534 Van Hise Hall
1220 Linden Drive
Madison, WI 53706
608.262.6441
OPAR@uwsa.edu
<http://www.uwsa.edu/opar>

INTRODUCTION

The following report, produced for the Joint Administrative Committee on Academic Programs (JACAP), includes information on University of Wisconsin (UW) System transfer students with particular attention to transfers from the Wisconsin Technical College System (WTCS). Transfer trends are shown for both new and re-entry transfer students. New transfer students are students who have not previously enrolled at the institution to which they transferred. Re-entry transfer students are students re-enrolling at a UW institution with transfer credits. Demographic and outcome information are shown only for new transfers.

An additional section focuses on the WTCS students transferring from liberal arts programs and courses offered at Madison Area Technical College, Milwaukee Area Technical College, and Nicolet Area Technical College. The demographics and outcomes of these students are compared to WTCS transfer students from non-liberal arts areas.

ENROLLMENT INFORMATION

During the 2004-05 year¹, 15,586 students transferred within or into the UW System (Figure 1). Of these transfer students, 13,667 were new transfer students and 1,919 were re-entry transfer students. The number of new transfer students increased by 361 (3%) between 2003-04 and 2004-05. The number of re-entry transfer students decreased by 289 (13%) over the same time period.

Figure 1
Transfer Students Into and Within the UW System by Entrance Status
2000-01 to 2004-05

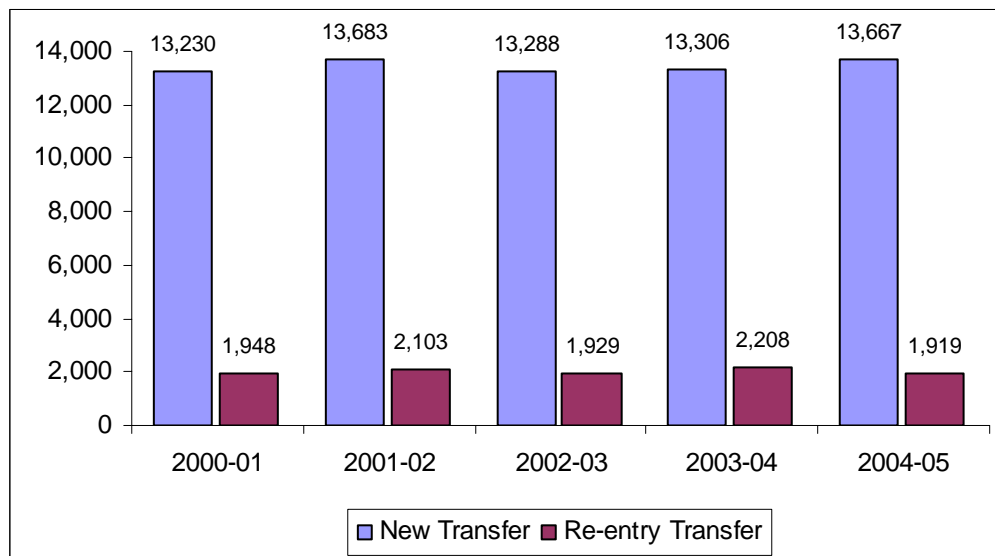


Figure 2 illustrates the trend in WTCS new transfers and re-entry transfers into the UW System. In 2004-05, there were 2,710 new transfers from WTCS districts into the UW System. This is an increase of 64 students, two percent, from 2003-04 and represents an all-time high in the number of WTCS transfer students. The number of re-entry transfers from WTCS decreased by 59 students, nine percent, from 2003-04.

Between 2003-04 and 2004-05, the UW System experienced increases in new transfers from eight WTCS districts and decreases from seven WTCS districts (one district had no change). Appendix A shows the five-year trend in new transfers from WTCS to the UW System by WTCS district. Overall, there was a 18 percent increase in the number of new transfers since 2000-01.

Figure 2
WTCS Transfer Students to the UW System by Entrance Status
2000-01 to 2004-05

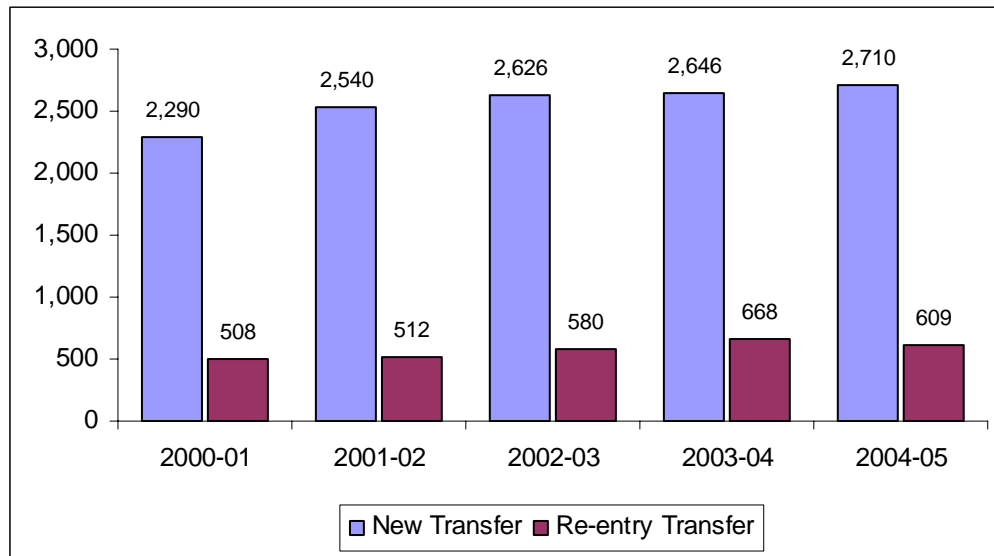


Figure 3 illustrates the proportion of new transfer students within and into the UW System in the 2004-05 year by type of sending institution². WTCS new transfer students constituted 19.8 percent of the total new transfer population. This proportion of transfers from WTCS has been increasing from 16.7 percent in 2001-02. The largest share of new transfers into the UW System, 28.5 percent, continues to come from out-of-state institutions. However, intra-UW System transfers³ (43.3 percent of transfers) continue to be the largest source of new transfer students for UW institutions. See Appendix C for details on new transfer students and Appendix D for details on re-entry transfer students.

Figure 3
New Transfer Students to the UW System by Sending Institution
2004-05

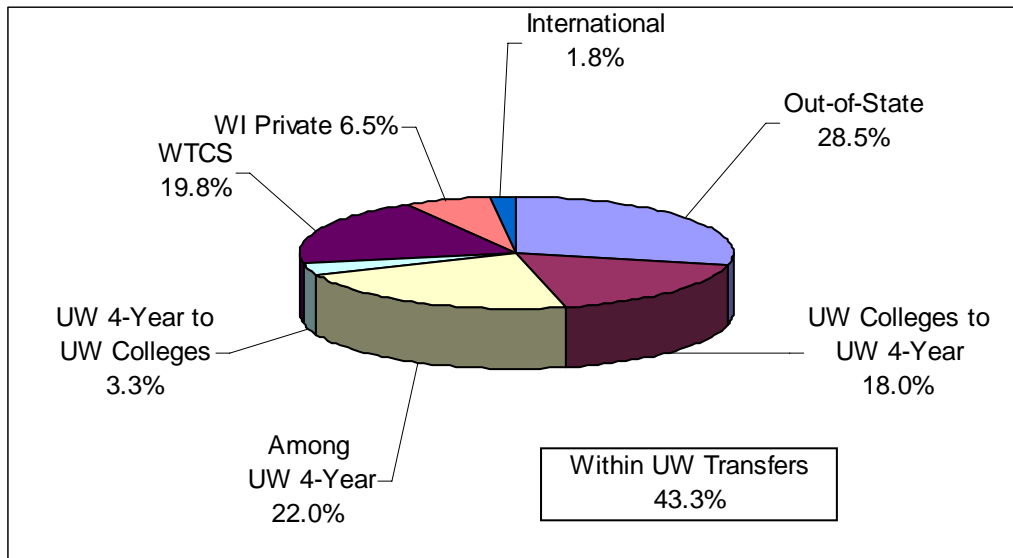
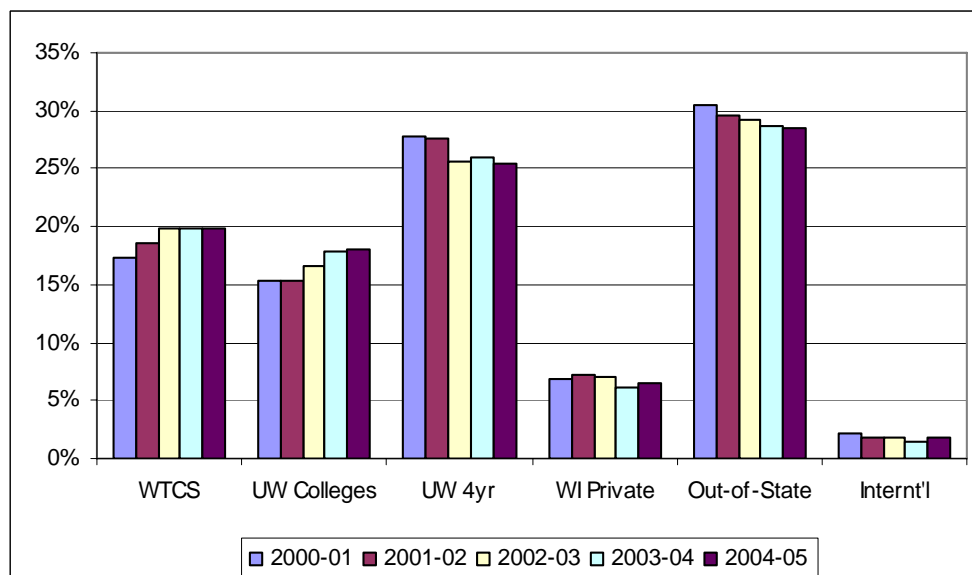


Figure 3a
New Transfer Students to the UW System by Sending Institution
2000-01 to 2004-05



DEMOGRAPHIC INFORMATION

The previous section provided information on transfer and re-entry transfer students on an annual basis. In this demographic section, information is shown only for new transfer students who entered in the fall semester. Figure 4 shows the distribution of the Fall 2004 new transfer cohort by student classification⁴. Fifty-five percent (55%) of WTCS new transfer students entered the UW System as freshmen compared to 20 percent of non-WTCS transfers entering as new freshmen. Appendix E shows the distribution of the Fall 2004 WTCS new transfer cohort to the UW System by both classification and WTCS district.

Figure 4
Fall 2004 New Transfer Cohort
by Student Classification at Entrance

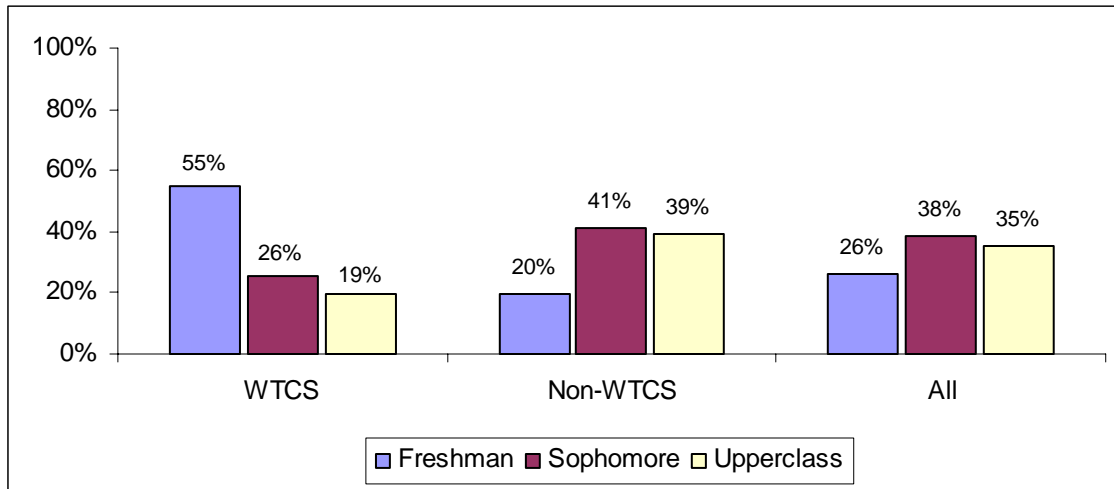


Figure 5 shows the student's full-time/part-time status⁵ of the Fall 2004 transfer cohort based on the first semester credit load. Thirty-two percent (32%) of the new transfer students from WTCS districts were part-time students while 19 percent non-WTCS transfers entered as part-time students. This distribution has been constant over the last five years. Appendix F shows the distribution of the WTCS new transfers to the UW System by both full-time/part-time status and WTCS district.

Figure 5
Fall 2004 New Transfer Cohort
by Full-Time/Part-Time Status

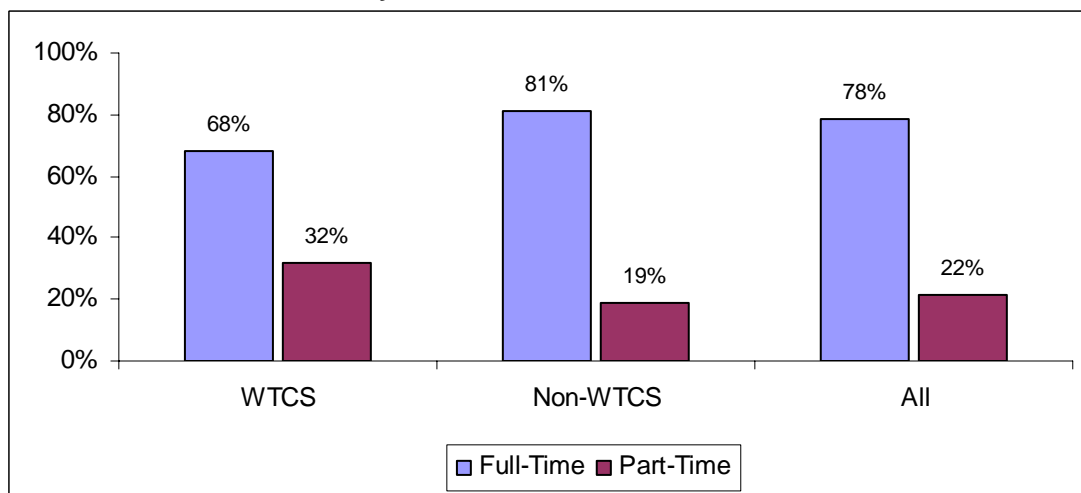


Figure 6 shows the age distribution of the Fall 2004 entering new transfer cohort. Thirty-two percent (32%) of new transfer students from the WTCS were 25 years or older while 16 percent of non-WTCS transfer students were 25 years of age or older. This distribution has remained constant over the last five years. Appendix G shows the distribution of the WTCS new transfers to the UW System by both age group and WTCS district.

Figure 6
Fall 2004 New Transfer Cohort
by Age Group

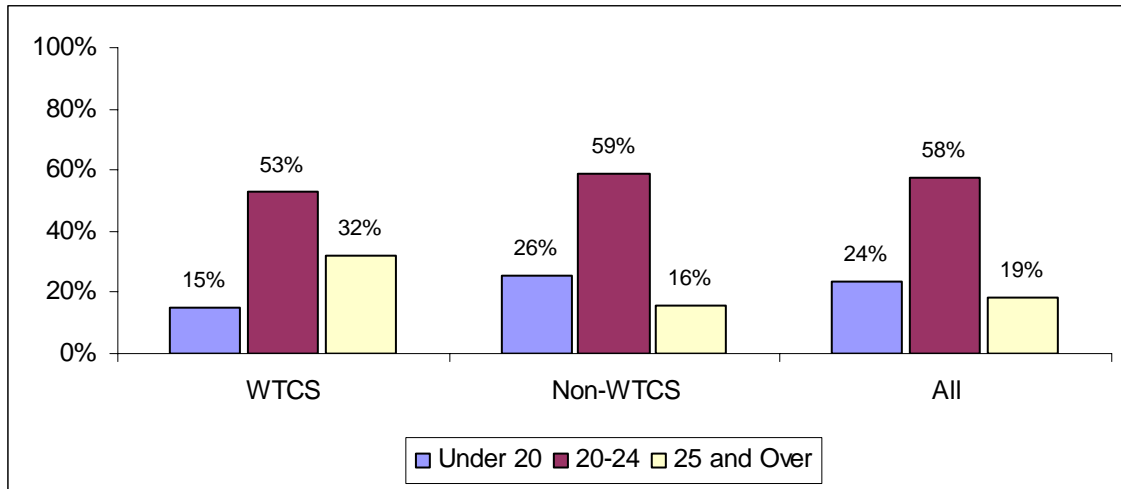
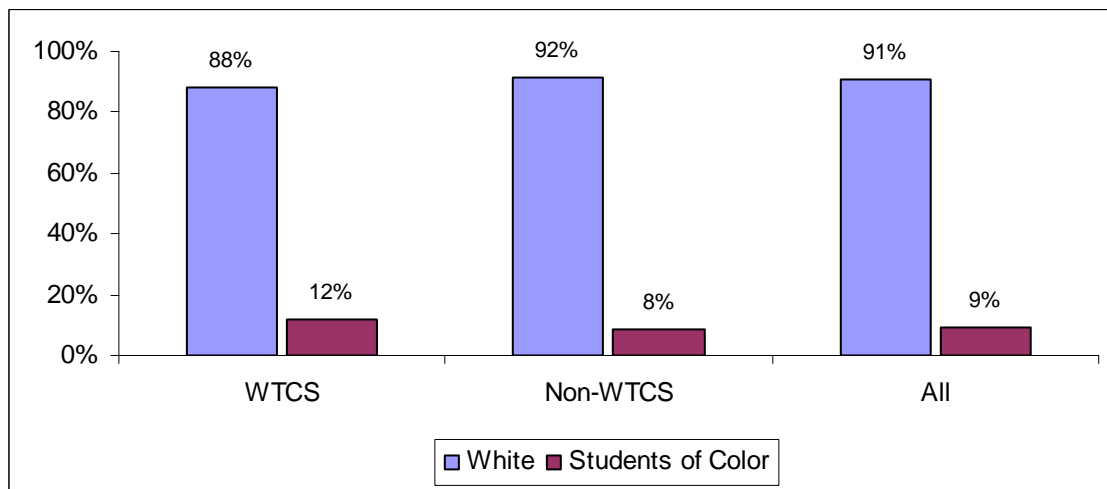


Figure 7 shows the race/ethnicity distribution of the Fall 2004 entering new transfer cohort. Twelve percent (12%) of new transfer students from the WTCS were students of color while eight percent (8%) of non-WTCS transfer students were students of color. This distribution has remained constant over the last five years. Appendix H shows the distribution of the WTCS new transfers to the UW System by both race/ethnicity and WTCS district.

Figure 7
Fall 2004 New Transfer Cohort
by Race/Ethnicity Group



OUTCOME INFORMATION

Figure 8 shows the first semester grade-point averages (GPA) for Fall 2002, 2003, and 2004 new transfer students.⁶ The average first semester GPA for all new transfer students is 2.8 on a 4.0 scale. There has been little change in the average first semester GPA for the past three cohorts of fall new transfer entrants. The average first semester GPA for Fall 2004 WTCS new transfer students, of 2.7, is slightly below the overall average, which includes all new transfer students. Appendix I shows the average first semester GPA of the Fall 2004 WTCS new transfers to the UW System by WTCS district.

Figure 8
Average First-Semester GPAs of New Transfers
by Sending Institution and Cohort Year

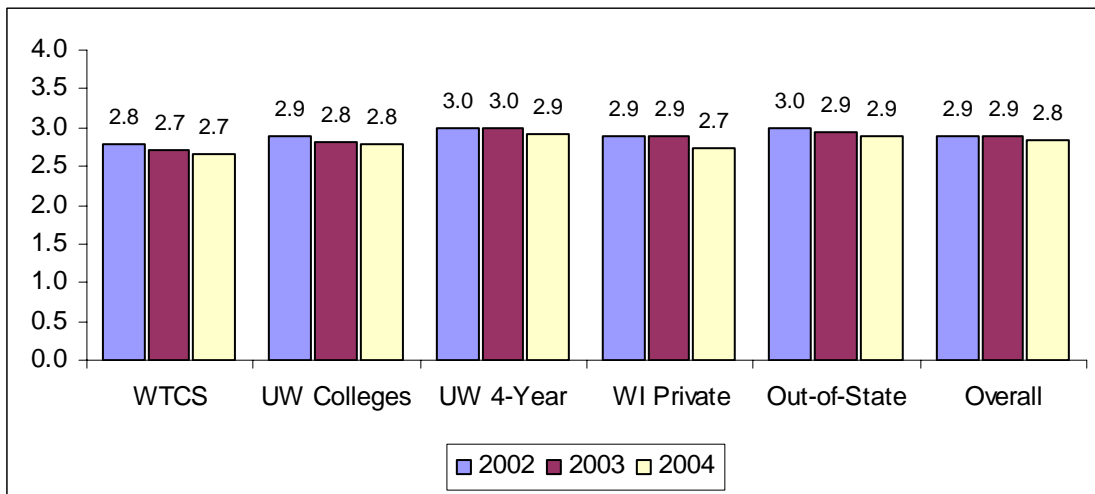
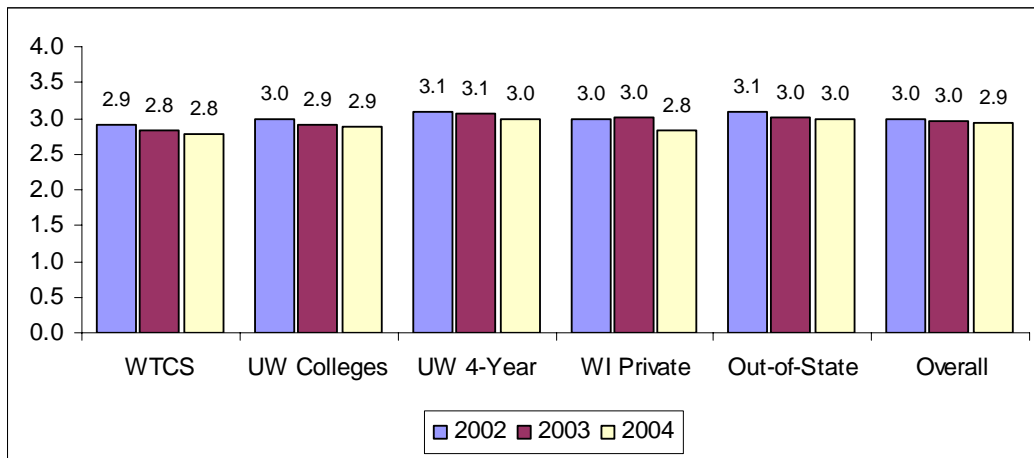


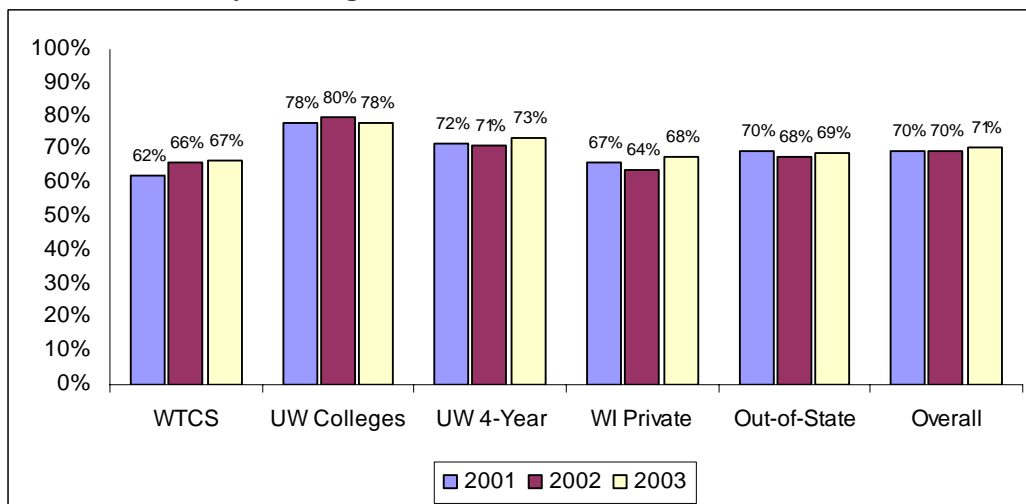
Figure 9 shows the first year grade-point averages (GPA) for Fall 2002, 2003 and 2004 new transfer students. The average first year GPA for all new transfer students in fall 2004 is 2.9 on a 4.0 scale. By comparison, the cumulative GPA of all UW undergraduates at the end of spring term 2004-05 was 3.0. There has been a slight drop in the average first year GPA for all new transfer entrants by type of sending institution. The average first year GPA for Fall 2004 all WTCS new transfer students, at 2.8, is slightly below the overall average. Appendix J shows the average first year GPA of the Fall 2004 WTCS new transfers to the UW System by WTCS district.

Figure 9
Average First-Year GPAs of New Transfers
by Sending Institution and Cohort Year



The successful completion of the first year at a college/university is critical in the progression to a degree. Figure 10 shows the second year retention rates for new transfer students in Fall 2001, 2002, and 2003. The proportion of transfer students who returned to the same UW institution for a second year of study varies by the type of sending institution. Students transferring from the UW Colleges had the highest second year retention rate (78 percent for Fall 2003 transfers) while students transferring from Wisconsin Technical Colleges had the lowest second year retention rate (67 percent for Fall 2003 transfers). While the groups may differ in many ways (age, full-time/part-time status, student classification, etc.), a comparison can be made to students who enter the UW System as full-time new freshmen and have a second year retention rate of about 80 percent. (Refer to Appendix K for details.)

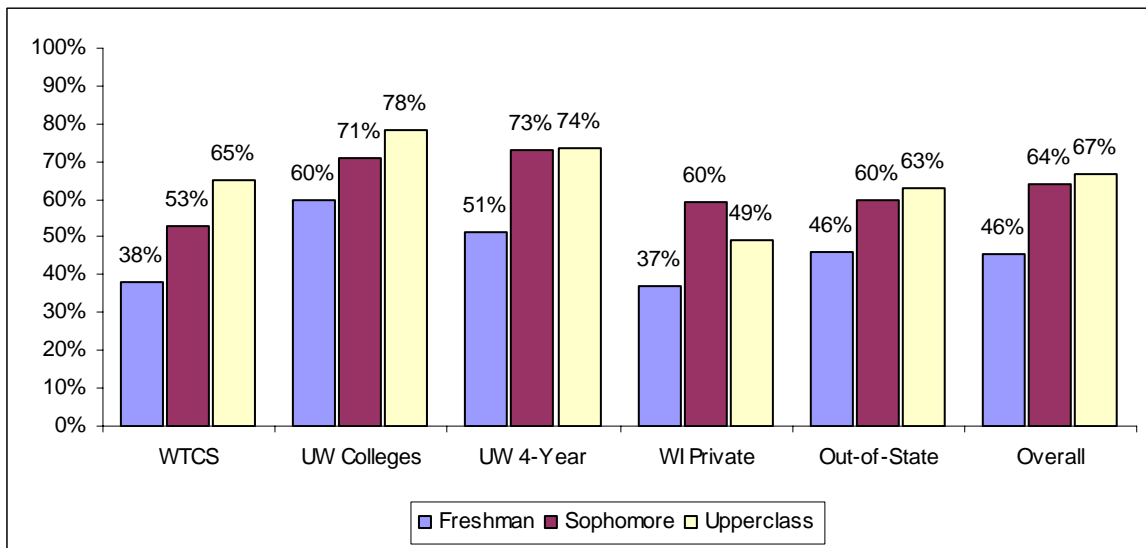
Figure 10
Second Year Retention Rates for UW System Transfer Students
by Sending Institution and UWS Enrollment Year



A combination of the 5th year graduation rate and 6th year retention rate can be used to predict the eventual transfer student graduation rate. Figure 11 shows the combined 5th year graduation rate and 6th year retention rate of Fall 1998 transfers into and within UW System institutions by type of sending institution and initial UW System classification. These rates have been fairly stable for the most recent fall cohorts (Fall 1997, 1998, and 1999.)

In general, graduation rates increase as the student level increases (i.e., students who transfer at the upperclass level have the highest graduation rates while students who transfer as freshmen have the lowest rates). For students who transfer at the sophomore level, the combined rates range from 73 percent for transfers from the UW four-year institutions to 53 percent for transfers from the Wisconsin Technical Colleges. (Refer to Appendix L for details.)

Figure 11
Combined 5th Year Graduation and 6th Year Retention Rates
for UW System Fall 1999 Transfer Students
by Type of Sending Institution and Student Classification at Entrance

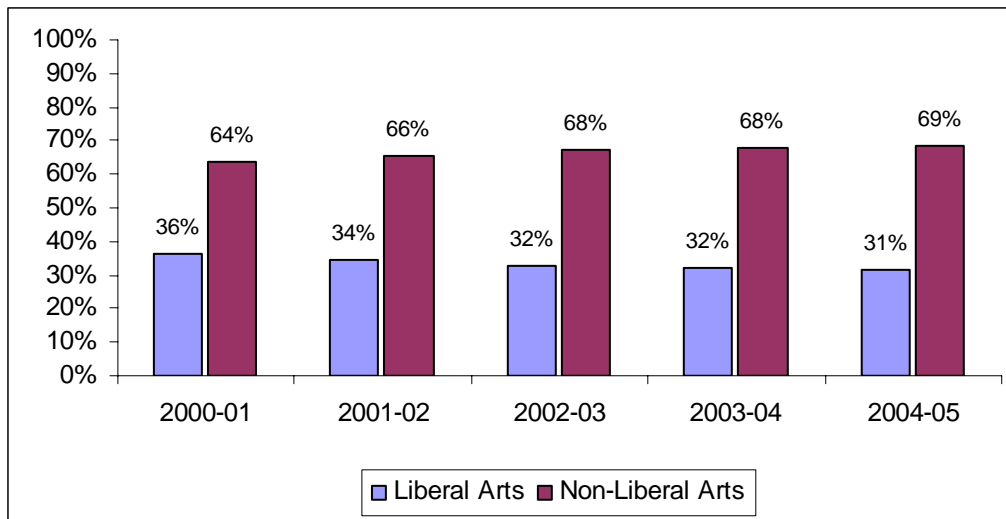


Transfers from WTCS Liberal Arts Programs

The UW System's new transfer students from the WTCS participated in a variety of WTCS programs and courses. Many of these students were enrolled in a liberal arts program or in liberal arts courses at Madison Area Technical College, Milwaukee Area Technical College, or Nicolet Area Technical College. The WTCS liberal arts programs provide courses comparable to those required for the first two years of a UW bachelor's degree. Students in liberal arts programs may transfer up to 72 college transfer credits toward a UW degree. WTCS transfer students not enrolled in a liberal arts program and who took applied associate degree (occupational) courses may transfer up to 30 general education credits (in the areas of communications, mathematics, natural science, and social and behavioral science) toward a UW bachelor's degree. Non-liberal arts students may also have received credit for occupational courses that transferred as part of a program-to-program articulation agreement or on a course-to-course basis. For the purposes of this report, the UW System's new transfer students were matched to program and course files provided by the WTCS and were categorized as liberal arts or non-liberal arts transfer students⁷.

Since 2000-01, the number of WTCS transfer students from non-liberal arts programs/courses has increased thirty-one percent (31%), while the number of WTCS transfer students from liberal arts programs/courses has increased only six percent (6%) over the same period⁸. As shown in Figure 12, of the UW System's new transfer students from WTCS districts in the 2004-05 academic year who were identified as being enrolled in either liberal arts or non-liberal arts program at a WTCS campus, 69 percent were liberal arts students and 31 percent were non-liberal arts students.

Figure 12
UW System Annual New Transfer Students from WTCS Districts
by Transfer Year and WTCS Program Type



The following demographic information is for fall new transfer students from the WTCS who can be identified as having been enrolled in either liberal arts program or a non-liberal arts program. Table 1 shows the distribution of fall new transfers from WTCS districts by WTCS program type and student classification at entrance. Sixty-eight percent (68%) of the Fall 2004 WTCS new transfer students not enrolled in a liberal arts program or course entered the UW System as freshmen, compared to 25 percent of the transfers who were enrolled in liberal arts programs or courses. The proportion of WTCS transfers from liberal arts programs entering the UW System as freshmen (25%) is higher than the proportion of non-WTCS transfers entering as freshmen (20%).

Table 1
UW System Fall New Transfer Students from WTCS Districts
by WTCS Program Type and Student Classification at Entrance

Fall	Freshman		Sophomore		Upperclass		Total	
	Liberal Arts	Non-Liberal Arts	Liberal Arts	Non-Liberal Arts	Liberal Arts	Non-Liberal Arts	Liberal Arts	Non-Liberal Arts
2004	25%	68%	42%	19%	33%	13%	100%	100%
2003	25%	61%	43%	22%	32%	17%	100%	100%
2002	29%	66%	46%	17%	25%	17%	100%	100%
2001	34%	68%	40%	18%	26%	14%	100%	100%
2000	30%	68%	43%	20%	26%	12%	100%	100%

Table 2 shows the distribution of fall new transfers from WTCS districts by WTCS program type and first semester credit load. Seventy-three percent (73%) of the WTCS liberal arts students enrolled full-time compared to 67 percent of the non-liberal arts students. Over the past five years, the proportion of WTCS transfer students enrolling in the UW System on a full-time basis has decreased slightly. The proportion of liberal arts students who enroll full-time (73%) is less than the proportion of non-WTCS transfer students who enroll full-time (81%).

Table 2
UW System Fall New Transfer Students from WTCS Districts
by WTCS Program Type and Full-Time/Part-Time Status

Fall	Full-time		Part-time		Total	
	Liberal Arts	Non-Liberal Arts	Liberal Arts	Non-Liberal Arts	Liberal Arts	Non-Liberal Arts
2004	73%	67%	27%	33%	100%	100%
2003	76%	70%	24%	30%	100%	100%
2002	78%	68%	22%	32%	100%	100%
2001	78%	68%	22%	32%	100%	100%
2000	76%	68%	24%	32%	100%	100%

Table 3 shows the distribution of fall new transfers from WTCS districts by WTCS program type and age group. In Fall 2004, 24 percent of liberal arts students were age 25 and over compared to 34 percent of non-liberal arts students. In general, liberal arts students tend to be slightly younger than their non-liberal arts counterparts.

Table 3
UW System Fall New Transfer Students from WTCS Districts
by WTCS Program Type and Age Group

Fall	Under 20		20-24		25 and Older		Total	
	Liberal Arts	Non-Liberal Arts	Liberal Arts	Non-Liberal Arts	Liberal Arts	Non-Liberal Arts	Liberal Arts	Non-Liberal Arts
2004	15%	14%	61%	52%	24%	34%	100%	100%
2003	16%	13%	61%	54%	23%	33%	100%	100%
2002	16%	14%	64%	55%	21%	31%	100%	100%
2001	18%	14%	62%	54%	21%	31%	100%	100%
2000	16%	12%	59%	59%	25%	29%	100%	100%

Table 4 shows the distribution of fall new transfers from WTCS districts by WTCS program type and race/ethnicity group. In Fall 2004, 16 percent of liberal arts and 11 percent non-liberal arts transfers were students of color. Eight percent (8%) of non-WTCS transfer students were students of color.

Table 4
UW System Fall New Transfer Students from WTCS Districts
by WTCS Program Type and Race/Ethnicity Group

Fall	Students of Color		White		Total	
	Liberal Arts	Non-Liberal Arts	Liberal Arts	Non-Liberal Arts	Liberal Arts	Non-Liberal Arts
2004	16%	11%	84%	89%	100%	100%
2003	12%	10%	88%	90%	100%	100%
2002	15%	10%	85%	90%	100%	100%
2001	16%	9%	84%	91%	100%	100%
2000	16%	9%	84%	91%	100%	100%

Figure 13 shows the first-semester GPAs of fall new transfers from WTCS districts by WTCS program type. After their first semester of enrollment, Fall 2004 liberal arts students had an average GPA of 2.7 and non-liberal arts students also had an average GPA of 2.7.

Figure 13
Average First-Semester GPAs of WTCS New Transfers
by Transfer Year and WTCS Program Type

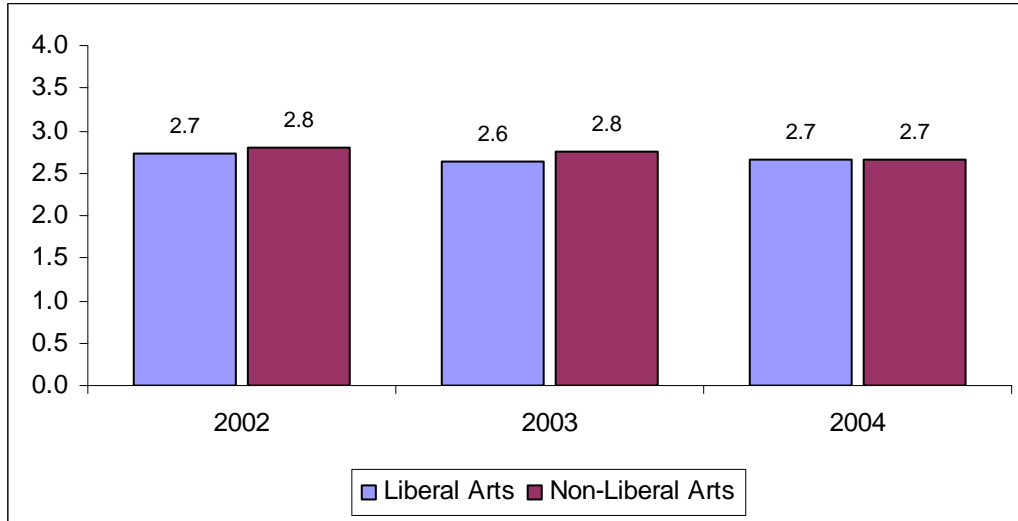


Figure 14 shows the first-year GPAs of fall new transfers from WTCS districts by WTCS program type. The GPA for liberal arts students is the same (2.8) as is the GPA of non-liberal arts students (2.8). Overall, the Fall 2004 new transfer students from the WTCS had an average GPA of 2.8 on a 4.0 scale.

Figure 14
Average First-Year GPAs of WTCS New Transfers
by Transfer Year and WTCS Program Type

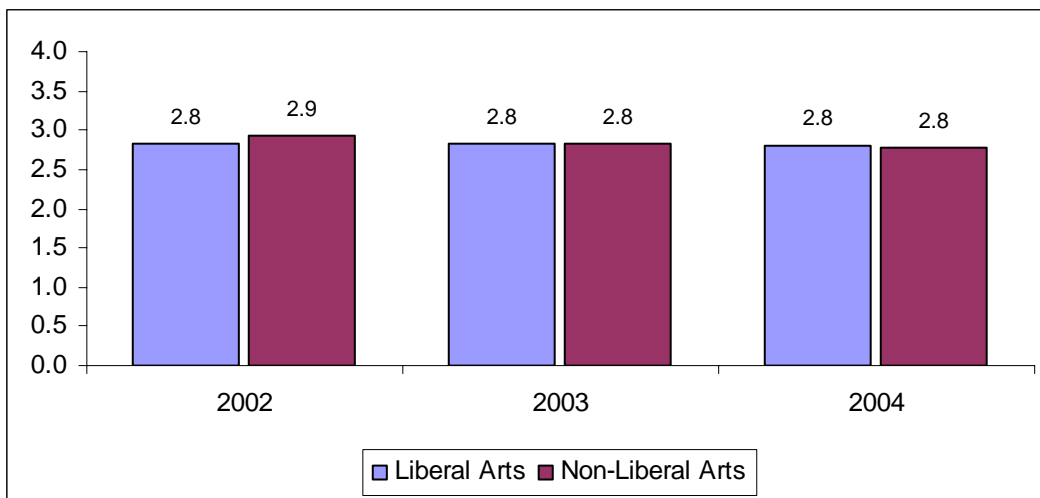


Figure 15 compares the second year retention rates for the WTCS transfer students who were enrolled in liberal arts programs and courses at Madison Area Technical College, Milwaukee Area Technical College, and Nicolet Area Technical College and WTCS transfer students who were enrolled in non-liberal arts programs and courses. WTCS liberal arts transfer students had higher second year retention rates than WTCS non-liberal arts transfer students. The retention rate for liberal arts transfers has been decreasing while the retention rate for WTCS non-liberal arts students has been increasing.

Figure 15
Second Year Retention Rates for UW System Transfer Students from WTCS Districts
by WTCS Program Type

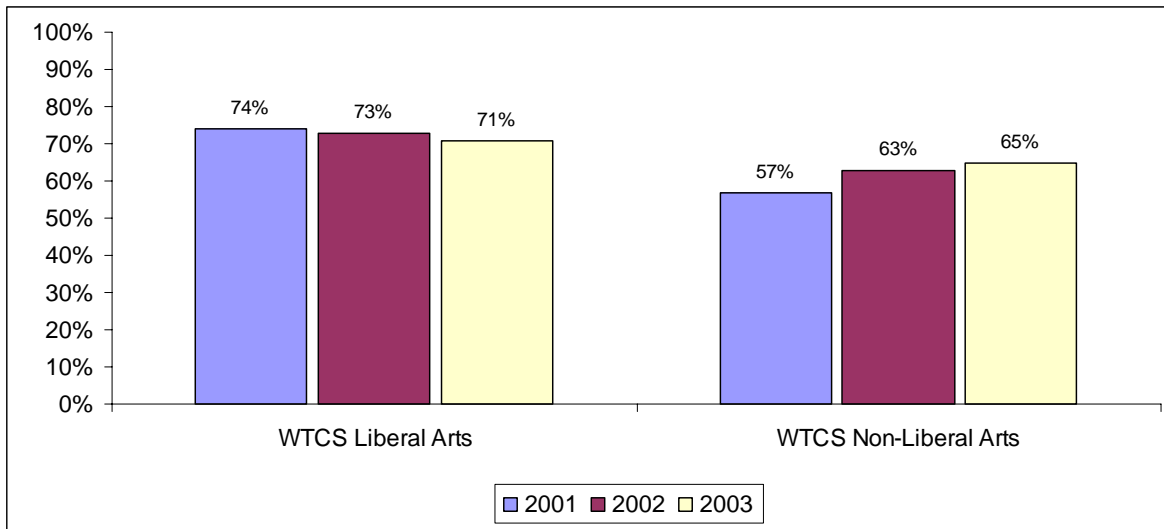
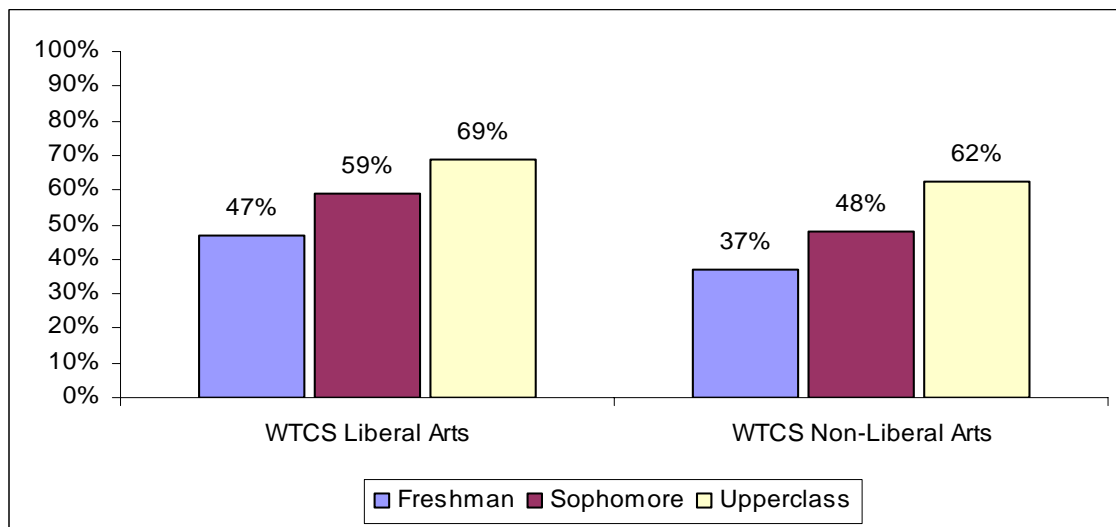


Figure 16 compares the combined 5th year graduation rate and 6th year retention rate for WTCS liberal arts transfer students and WTCS non-liberal arts transfer students. For the Fall 1999 transfer cohort, WTCS liberal arts students who transferred into the UW at the sophomore level had a rate of 59 percent compared to 48 percent of non-liberal arts transfer students.

Figure 16
Combined 5th Year Graduation and 6th Year Retention Rates
for UW System Fall 1999 Transfer Students by WTCS Program Type



CONCLUSIONS

The number of overall transfer students in 2004-05 rose slightly to 15,586 students. The number of WTCS new transfer students to the UW System increased in 2004-05 to the highest level ever to 3,319. The proportion of the UW System's overall transfer population made up of WTCS new transfer students increased to 19.8 percent, up from 16.7 in 2000-01. Compared to all other new transfer students, new transfer students from the WTCS transfer in fewer credits, are older, are more likely to enroll on a part-time basis, and are more racially diverse.

Average first-semester GPAs for WTCS new transfer students are slightly lower than first-semester GPAs for transfer students from other types of institutions. Average first-year GPAs for WTCS new transfer students are also slightly lower than those of other transfer students. The combined rate for WTCS transfer students is comparable to rates for transfer students from Wisconsin private and out-of-state colleges and universities but lower than the rates for transfer students from within the University of Wisconsin System.

The number of WTCS transfer students from non-liberal arts programs/courses has increased by 32 percent since 2000-01, possibly due to increased articulation agreements and changes in transfer policy. The number of WTCS transfer students from liberal arts programs/courses has increased slightly over the same time period but the proportion has declined. Compared to non-liberal arts students, liberal arts students transfer in more credits, are younger, are more likely to enroll on a full-time basis, and are slightly more racially diverse. WTCS liberal arts transfer students have higher retention rates and higher completion rates as their non-liberal arts counterparts but very similar GPA's.

APPENDICES

**Appendix A
WTCS New Transfers to the UW System by WTCS District
2000-01 to 2004-05**

	2000-01		2001-02		2002-03		2003-04		2004-05	
	#	%	#	%	#	%	#	%	#	%
Blackhawk	56	2.4%	51	2.0%	73	2.8%	65	2.5%	77	2.8%
Chippewa Valley	123	5.4%	173	6.8%	185	7.0%	181	6.8%	246	9.1%
Fox Valley	170	7.4%	165	6.5%	200	7.6%	209	7.9%	196	7.2%
Gateway	138	6.0%	115	4.5%	139	5.3%	151	5.7%	168	6.2%
Lakeshore	43	1.9%	40	1.6%	45	1.7%	50	1.9%	44	1.6%
Madison	556	24.3%	607	23.9%	656	25.0%	602	22.8%	636	23.5%
Mid-State	80	3.5%	86	3.4%	111	4.2%	102	3.9%	102	3.8%
Milwaukee	478	20.9%	502	19.8%	439	16.7%	466	17.6%	485	17.9%
Moraine	51	2.2%	61	2.4%	73	2.8%	70	2.6%	75	2.8%
Nicolet	64	2.8%	86	3.4%	71	2.7%	72	2.7%	53	2.0%
Northcentral	112	4.9%	127	5.0%	127	4.8%	117	4.4%	90	3.3%
Northeast WI	126	5.5%	154	6.1%	156	5.9%	172	6.5%	173	6.4%
Southwest	18	0.8%	21	0.8%	14	0.5%	16	0.6%	20	0.7%
Waukesha	85	3.7%	122	4.8%	80	3.0%	107	4.0%	102	3.8%
Western WI	138	6.0%	126	5.0%	138	5.3%	132	5.0%	115	4.2%
WI Indianhead	52	2.3%	100	3.9%	119	4.5%	134	5.1%	127	4.7%
Other WTCS	0	0.0%	4	0.2%	0	0.0%	0	0.0%	1	0.0%
Total	2,290	100.0%	2,540	100.0%	2,626	100.0%	2,646	100.0%	2,710	100.0%

**Appendix B
WTCS New Transfers to the UW System by WTCS District
Annual Percentage Change**

	2000-01	2001-02	2002-03	2003-04	2004-05	03-04 to 04-05	00-01 to 04-05
Blackhawk	56	51	73	65	77	18.5%	37.5%
Chippewa Valley	123	173	185	181	246	35.9%	100.0%
Fox Valley	170	165	200	209	196	-6.2%	15.3%
Gateway	138	115	139	151	168	11.3%	21.7%
Lakeshore	43	40	45	50	44	-12.0%	2.3%
Madison	556	607	656	602	636	5.6%	14.4%
Mid-State	80	86	111	102	102	0.0%	27.5%
Milwaukee	478	502	439	466	485	4.1%	1.5%
Moraine	51	61	73	70	75	7.1%	47.1%
Nicolet	64	86	71	72	53	-26.4%	-17.2%
Northcentral	112	127	127	117	90	-23.1%	-19.6%
Northeast WI	126	154	156	172	173	0.6%	37.3%
Southwest	18	21	14	16	20	25.0%	11.1%
Waukesha	85	122	80	107	102	-4.7%	20.0%
Western WI	138	126	138	132	115	-12.9%	-16.7%
WI Indianhead	52	100	119	134	127	-5.2%	144.2%
Other WTCS	0	4	0	0	1	---	---
Total	2,290	2,540	2,626	2,646	2,710	2.4%	18.3%

Appendix C
Undergraduate New Transfers to the UW System by Source
2004-05

From:	Transfers To:															Total
	MSN	MIL	EAU	GBY	LAC	OSH	PKS	PLT	RVF	STP	STO	SUP	WTW	UWC		
Madison		124	30	9	26	44	8	15	7	22	2	7	25	24	343	
Milwaukee	123		25	45	14	86	44	7	7	13	8	2	56	99	529	
Eau Claire	55	56		10	22	23	5	8	33	29	64	4	16	27	352	
Green Bay	18	51	12		10	33	3	3	1	14	5	5	10	31	196	
La Crosse	57	68	26	7		23	3	13	6	11	10	3	6	18	251	
Oshkosh	33	110	9	43	8		13	11	4	32	13	5	27	63	371	
Parkside	9	89		1	3	6			2		8	3	3	34	174	
Platteville	20	41	16	6	14	22	11			5	13	13	1	14	208	
River Falls	6	6	16	4	7	9	1	2		9	27	5	5	14	111	
Stevens Point	39	43	27	28	16	50	8	11	5		7	3	23	53	313	
Stout	7	23	63	7	14	16	1	6	18	22		4	11	32	224	
Superior	2	5	6	2	2	2			7	1	7		2	6	42	
Whitewater	48	146	14	8	7	19	28	14	4	10	6			40	344	
Extension		3	2	1								1			7	
UW 4-Year Total	417	765	246	171	143	333	125	92	97	184	165	43	229	455	3,465	
Baraboo/Sauk	23	16	7	1	14	12	1	14		18	5		10		121	
Barron	2	3	29	1	2	1			16	3	24	16			97	
Fond du Lac	14	17	3	1	3	80	3	5	5	11	2		9		153	
Fox Valley	27	34	7	38	17	183	2	17	2	23	9		5		364	
Manitowoc	14	37	1	40	6	31	3	4	3	11	2		2		154	
Marathon	42	11	31	11	17	17	2	9	5	96	14	7	2		264	
Marinette	2	10	1	31	4	14	1	1		8	2	1	1	1	77	
Marshfield/Wood	5	3	32	3	12	7		7	4	46	12			1	132	
Richland	9	7	2		23	5	2	36	3	7	4	3	5		106	
Rock	41	19	3	1	3	6	4	12		8	1	1	120		219	
Sheboygan	3	54	2	14	5	19	1	5	1	2	7		7	2	122	
Washington	8	108	4	7	5	27		4	3	9	2		12		189	
Waukesha	39	224	6	1	9	26	14	8	7	11	8		97		450	
Online				1	1			1		6	5				14	
UW Colleges Total	229	543	128	150	121	428	33	123	49	259	97	28	270	4	2,462	
Blackhawk	3	5	1					4		2			23	39	77	
Chippewa Valley		3	72	2	2	5		2	21	3	116	7		13	246	
Fox Valley		6	1	9		84	1	1	2	15	18		1	58	196	
Gateway		18		1	1	5	106		1	2	3	1	23	7	168	
Lakeshore		3		3		3		1		2	1		1	30	44	
Madison	230	80	18	8	10	19	4	35	2	36	26	2	119	47	636	
Mid-State		4	1	1	1	7	2			49	10	1	1	25	102	
Milwaukee	5	367		5	1	14	25	3	1	10	8		16	30	485	
Moraine	2	8				17	1			2	7	1	5	32	75	
Nicolet	2	2	3	8	5	4		1	1	9	6	6	1	5	53	
Northcentral	2	4		5	1	10	1			18	9	1		39	90	
Northeast WI		17		92		14	4		1	8	12	3	3	19	173	
Southwest	1					1		12			5			1	20	
Waukesha		38				2	1			1	6		10	44	102	
Western WI		4	7	2	62	3		2	3	9	8	1	3	11	115	
WI Indianhead			2	2		1		2	17		18	62		23	127	
Other WTCS											1				1	
WTCS Total	245	559	105	138	83	189	145	63	49	166	254	85	206	423	2,710	
Out of State	533	542	240	182	190	160	258	117	385	224	292	340	157	273	3,893	
International	39	28	85	4	3	20	13	6	17	9	2	17	7	2	252	
WI Private	91	264	31	62	31	94	36	12	11	65	16	28	45	99	885	
Grand Total	1,554	2,701	835	707	571	1,224	610	413	608	907	826	541	914	1,256	13,667	

Appendix D
Undergraduate Re-Entry Transfers to the UW System by Source
2004-05

From:	Transfers To:														Total
	MSN	MIL	EAU	GBY	LAC	OSH	PKS	PLT	RVF	STP	STO	SUP	WTW	UWC	
Madison		20	3	3	1	5	3	2	1	6	1		5	6	56
Milwaukee	11		2	5		3	10	1		3	2		1	21	59
Eau Claire	2	4		1	1	3			4	3	13		1	3	35
Green Bay	4	1	2		1	6				3	3		1	6	27
La Crosse	7	7	3	1		1	1				2		1	2	25
Oshkosh	7	6	2	3			1			4			2	17	42
Parkside		10	1			1				1			4	3	20
Platteville	51	3	2		1						4	1	1	6	69
River Falls	3		1					1			7	2		4	18
Stevens Point	21	2	7	3	1	1	1				1			12	49
Stout	2		2		1	1		1	3	1		1		6	18
Superior		1								1	1			1	4
Whitewater	2	9		1		2	5	1		1				13	34
Extension	3		1	1		5								2	12
UW 4-Year Total	113	63	26	18	6	28	21	6	8	23	34	4	16	102	468
Baraboo/Sauk	5	4	1					1							11
Barron			2								2	1			5
Fond du Lac		1			1	6				1	1			1	11
Fox Valley		2	3			22		1		1				1	30
Manitowoc		2		3		1				1					7
Marathon	1	1	2	1		1				6	2	1			15
Marinette	1			1		1									3
Marshfield/Wood		1	2					1		2					6
Richland	1				1			1		1	1				5
Rock	3	3									1		5		12
Sheboygan		5				2							4		11
Washington	1	15				3		1		1			1		22
Waukesha	4	34						1	1	3			6	1	50
Online	1			1						1					3
UW Colleges Total	17	68	10	6	2	36	0	6	1	17	7	2	16	3	191
Blackhawk													2	7	9
Chippewa Valley			17						3		19		1		40
Fox Valley		3				35				3	2			21	64
Gateway		3				1	36	1					6	2	49
Lakeshore		2		2										8	12
Madison	77	3	1	3	1	4	1	6		4	3	1	7	6	117
Mid-State	1	2			1					13	1			6	24
Milwaukee		143		1		4	5			1	2	1	3	7	167
Moraine						1								9	10
Nicolet	1		3	1		1				4				5	15
Northcentral										5				7	12
Northeast WI		4		14		1				1				8	28
Southwest								5							5
Waukesha	1	17				1								7	26
Western WI	1	1	1		8	1				1					13
WI Indianhead									2		3	8		4	17
Other WTCS							1								1
WTCS Total	81	178	22	21	10	49	43	12	5	32	30	10	19	97	609
Out of State	172	52	27	17	11	7	17	5	20	12	27	29	9	29	434
International	94	6	1							1		1			103
WI Private	13	48		6	2	12	5	1		5	5	2	4	11	114
Grand Total	490	415	86	68	31	132	86	30	34	90	103	48	64	242	1,919

Appendix E
Student Classification of WTCS New Transfers
to the UW System by WTCS District
Fall 2004

	Freshman		Sophomore		Upperclass		Total	
	#	%	#	%	#	%	#	%
Blackhawk	34	72.3%	9	19.1%	4	8.5%	47	100.0%
Chippewa Valley	79	51.3%	34	22.1%	41	26.6%	154	100.0%
Fox Valley	85	70.2%	22	18.2%	14	11.6%	121	100.0%
Gateway	98	87.5%	12	10.7%	2	1.8%	112	100.0%
Lakeshore	25	83.3%	3	10.0%	2	6.7%	30	100.0%
Madison	108	26.7%	164	40.6%	132	32.7%	404	100.0%
Mid-State	49	81.7%	6	10.0%	5	8.3%	60	100.0%
Milwaukee	132	44.1%	104	34.8%	63	21.1%	299	100.0%
Moraine	30	71.4%	6	14.3%	6	14.3%	42	100.0%
Nicolet	9	22.5%	18	45.0%	13	32.5%	40	100.0%
Northcentral	43	69.4%	9	14.5%	10	16.1%	62	100.0%
Northeast WI	70	68.0%	19	18.4%	14	13.6%	103	100.0%
Southwest	10	62.5%	5	31.3%	1	6.3%	16	100.0%
Waukesha	50	84.7%	7	11.9%	2	3.4%	59	100.0%
Western WI	48	81.4%	6	10.2%	5	8.5%	59	100.0%
WI Indianhead	55	74.3%	8	10.8%	11	14.9%	74	100.0%
Total	925	55.0%	432	25.7%	325	19.3%	1,682	100.0%

Appendix F
Full-Time/Part-Time Status of WTCS New Transfers
to the UW System by WTCS District
Fall 2004

	Full-Time		Part-Time		Total	
	#	%	#	%	#	%
Blackhawk	27	57.4%	20	42.6%	47	100.0%
Chippewa Valley	126	81.8%	28	18.2%	154	100.0%
Fox Valley	76	62.8%	45	37.2%	121	100.0%
Gateway	67	59.8%	45	40.2%	112	100.0%
Lakeshore	17	56.7%	13	43.3%	30	100.0%
Madison	327	80.9%	77	19.1%	404	100.0%
Mid-State	41	68.3%	19	31.7%	60	100.0%
Milwaukee	148	49.5%	151	50.5%	299	100.0%
Moraine	24	57.1%	18	42.9%	42	100.0%
Nicolet	33	82.5%	7	17.5%	40	100.0%
Northcentral	30	48.4%	32	51.6%	62	100.0%
Northeast WI	77	74.8%	26	25.2%	103	100.0%
Southwest	13	81.3%	3	18.8%	16	100.0%
Waukesha	35	59.3%	24	40.7%	59	100.0%
Western WI	45	76.3%	14	23.7%	59	100.0%
WI Indianhead	58	78.4%	16	21.6%	74	100.0%
Total	1,144	68.0%	538	32.0%	1,682	100.0%

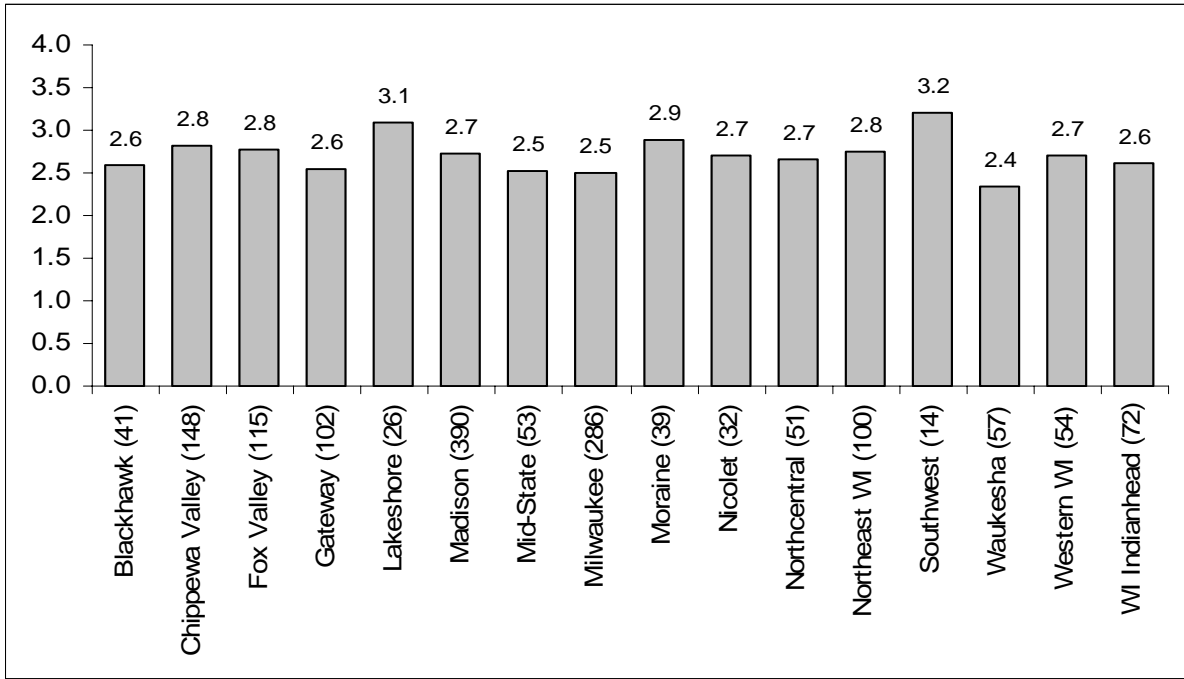
Appendix G
Age Distribution of WTCS New Transfers
to the UW System by WTCS District
Fall 2004

	Under 20		20-24		25 and Over		Total	
	#	%	#	%	#	%	#	%
Blackhawk	6	12.8%	22	46.8%	19	40.4%	47	100.0%
Chippewa Valley	15	9.7%	88	57.1%	51	33.1%	154	100.0%
Fox Valley	12	9.9%	65	53.7%	44	36.4%	121	100.0%
Gateway	18	16.1%	50	44.6%	44	39.3%	112	100.0%
Lakeshore	4	13.3%	13	43.3%	13	43.3%	30	100.0%
Madison	57	14.1%	243	60.1%	104	25.7%	404	100.0%
Mid-State	9	15.0%	33	55.0%	18	30.0%	60	100.0%
Milwaukee	39	13.0%	159	53.2%	101	33.8%	299	100.0%
Moraine	6	14.3%	16	38.1%	20	47.6%	42	100.0%
Nicolet	8	20.0%	17	42.5%	15	37.5%	40	100.0%
Northcentral	5	8.1%	29	46.8%	28	45.2%	62	100.0%
Northeast WI	17	16.5%	60	58.3%	26	25.2%	103	100.0%
Southwest	0	0.0%	9	56.3%	7	43.8%	16	100.0%
Waukesha	10	16.9%	33	55.9%	16	27.1%	59	100.0%
Western WI	17	28.8%	29	49.2%	13	22.0%	59	100.0%
WI Indianhead	25	33.8%	27	36.5%	22	29.7%	74	100.0%
Total	248	14.7%	893	53.1%	541	32.2%	1,682	100.0%

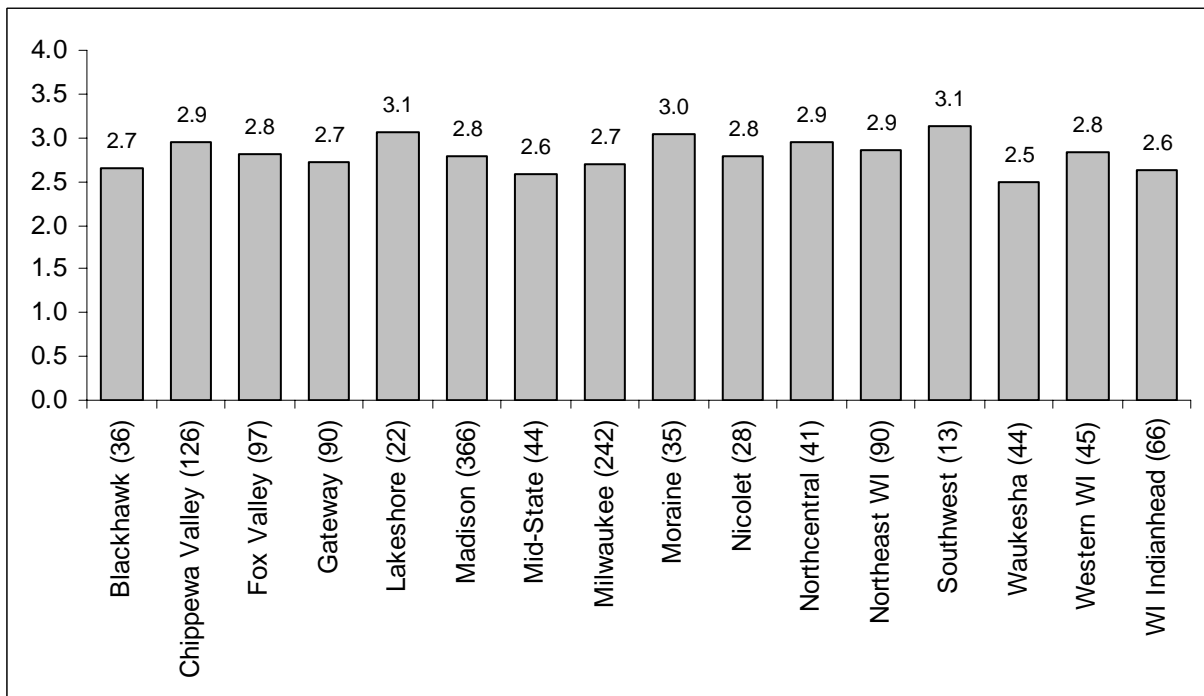
Appendix H
Race/Ethnicity Breakdown of WTCS New Transfers
to the UW System by WTCS District
Fall 2004

	White		Students of Color		Total	
	#	%	#	%	#	%
Blackhawk	41	87.2%	6	12.8%	47	100.0%
Chippewa Valley	145	94.2%	9	5.8%	154	100.0%
Fox Valley	114	94.2%	7	5.8%	121	100.0%
Gateway	85	75.9%	27	24.1%	112	100.0%
Lakeshore	29	96.7%	1	3.3%	30	100.0%
Madison	364	90.1%	40	9.9%	404	100.0%
Mid-State	58	96.7%	2	3.3%	60	100.0%
Milwaukee	214	71.6%	85	28.4%	299	100.0%
Moraine	40	95.2%	2	4.8%	42	100.0%
Nicolet	39	97.5%	1	2.5%	40	100.0%
Northcentral	60	96.8%	2	3.2%	62	100.0%
Northeast WI	92	89.3%	11	10.7%	103	100.0%
Southwest	16	100.0%	0	0.0%	16	100.0%
Waukesha	57	96.6%	2	3.4%	59	100.0%
Western WI	55	93.2%	4	6.8%	59	100.0%
WI Indianhead	70	94.6%	4	5.4%	74	100.0%
Total	1,479	87.9%	203	12.1%	1,682	100.0%

Appendix I
Average First-Semester GPAs of WTCS New Transfers
to the UW System by WTCS District
Fall 2004



Appendix J
Average First-Year GPAs of WTCS New Transfers
to the UW System by WTCS District
Fall 2004



Appendix K
Second Year Retention Rates for UW System New Transfer Students
by Type of Sending Institution and Student Classification at Entrance
Fall 2003

Type of Sending Institution	Class Level	# in Cohort	Retained to 2 nd Year	
			#	%
WTCS	Freshman	777	452	58%
	Sophomore	427	317	74%
	Upperclass	342	262	77%
	Total	1,546	1,031	67%
UW Colleges	Freshman	209	130	62%
	Sophomore	639	500	78%
	Upperclass	886	721	81%
	Total	1,734	1,351	78%
UW 4-Year	Freshman	441	253	57%
	Sophomore	980	752	77%
	Upperclass	764	599	78%
	Total	2,185	1,604	73%
Wisconsin Private	Freshman	85	47	55%
	Sophomore	238	166	70%
	Upperclass	164	119	73%
	Total	487	332	68%
Out-of-State	Freshman	566	338	60%
	Sophomore	962	700	73%
	Upperclass	973	696	72%
	Total	2,501	1,734	69%
Overall**	Freshman	2,096	1,229	59%
	Sophomore	3,281	2,448	75%
	Upperclass	3,208	2,420	75%
	Total	8,585	6,097	71%

** Overall totals include students transferring from international colleges and universities.
Data are insufficient to report separate rates for international transfer students.

Appendix L
Combined 5th Year Graduation Rate and 6th Year Retention Rate
for UW System New Transfer Students
by Type of Sending Institution and Student Classification at Entrance
Fall 1998

Type of Sending Institution	Class Level	# in Cohort	Graduated in 5 Years		Retained to 6 th Year		Combined Rate
			#	%	#	%	
WTCS	Freshman	763	193	25%	97	13%	38%
	Sophomore	379	171	45%	30	8%	53%
	Upperclass	211	126	60%	11	5%	65%
	Total	1,353	490	36%	138	10%	46%
UW Colleges	Freshman	271	134	49%	28	10%	60%
	Sophomore	461	297	64%	29	6%	71%
	Upperclass	541	413	76%	11	2%	78%
	Total	1,273	844	66%	68	5%	72%
UW 4-Year	Freshman	582	227	39%	71	12%	51%
	Sophomore	1037	687	66%	71	7%	73%
	Upperclass	642	452	70%	20	3%	74%
	Total	2,261	1,366	60%	162	7%	68%
Wisconsin Private	Freshman	169	42	25%	21	12%	37%
	Sophomore	247	135	55%	12	5%	60%
	Upperclass	132	60	45%	5	4%	49%
	Total	548	237	43%	38	7%	50%
Out-of-State	Freshman	744	278	37%	65	9%	46%
	Sophomore	1,099	606	55%	50	5%	60%
	Upperclass	929	565	61%	20	2%	63%
	Total	2,772	1,449	52%	135	5%	57%
Overall**	Freshman	2,552	880	34%	282	11%	46%
	Sophomore	3,274	1,908	58%	193	6%	64%
	Upperclass	2,568	1,646	64%	68	3%	67%
	Total	8,394	4,434	53%	543	6%	59%

**Overall totals include students transferring from international colleges and universities.
Data are insufficient to report separate rates for international transfer students.

END NOTES

¹ Academic year is defined as the summer, fall, winter, and spring terms.

² Type of sending institution is based on the last institution attended by a student prior to transfer. For example, a student who earned credits at one of the UW Colleges, transferred to a WTCS district and then transferred back into a UW institution would be classified as a WTCS transfer student.

³ Intra-UW System transfers are transfers among UW four-year institutions, transfers from UW Colleges to UW four-year institutions, and transfers from UW four-year institutions to UW Colleges.

⁴ Student classification is based on the total number of degree credits which may have been accumulated from more than one transfer institution. While credit ranges differ among UW institutions, in general, freshman students have 0-29 degree credits, sophomore students between 30 and 59 credits, juniors between 60 and 89 credits, and seniors have 90 or more credits. The classifications used for this report are those provided by the UW institutions.

⁵ Part-time status for undergraduates is defined as fewer than 12 credits.

⁶ Beginning in Fall 2003, the collection of GPA information was expanded to include all undergraduates. Prior to this time, GPA information was not collected for students who graduated during the term or did not enroll in the subsequent term.

⁷ Liberal arts students were defined as students who were most recently enrolled in a liberal arts program (rather than in an associate (occupational), technical, or certificate program) or students who were not enrolled in a WTCS program but who most recently took liberal arts courses (rather than associate, technical, or certificate courses). Non-liberal arts students were defined as students who were most recently enrolled in an associate (occupational), technical, or certificate program or students who were not enrolled in a WTCS program but who most recently took associate (occupational), technical, or certificate courses.

⁸ Annual transfer numbers in this report count all transfer "acts". For example, a student who transferred twice during the same year is counted twice, once at each receiving institution. A transfer student who is enrolled at more than one UW institution in the same semester is also counted twice, once at each receiving institution.