

*J*oint *A*dmistrative *C*ommittee on *A*cademic *P*rograms

Transfers from the Wisconsin Technical Colleges to the University of Wisconsin System
October 2002

Prepared by:
The University of Wisconsin System
Office of Policy Analysis and Research
1534 Van Hise Hall
1220 Linden Drive
Madison, WI 53706
608.262.6441
OPAR@uwsa.edu
<http://www.uwsa.edu/opar>

INTRODUCTION

The following report, produced for the Joint Administration Committee on Academic Programs (JACAP), includes information on University of Wisconsin (UW) System transfer students with particular attention to transfers from the Wisconsin Technical College System (WTCS). Transfer trends are shown for both new and re-entry transfer students. New transfer students are students who have not previously enrolled at the institution to which they transferred; re-entry/transfer students are re-enrolling at a UW institution with transfer credits. Demographic and outcome information are shown only for new transfers.

There has been a longstanding interest in learning more about the WTCS students transferring from college parallel programs and courses offered at Madison Area Technical College, Milwaukee Area Technical College and Nicolet Area Technical College. This is the second annual report containing a section specifically about these students and how their demographics and outcomes compare to both non-college parallel transfer students and non-WTCS transfer students.

ENROLLMENT INFORMATION

During the 2001-02 year¹, 15,786 students transferred within or into the UW System (Figure 1). Of these transfer students, 13,683 were new transfer students and 2,103 were re-entry transfer students. The number of new transfer students increased by 453 (3.4%) between 2000-01 and 2001-02. The number of re-entry transfer students increased by 155 (8.0%) over the same time period.

Figure 1
Transfer Students Into and Within the UW System by Entrance Status
1997-98 to 2001-02

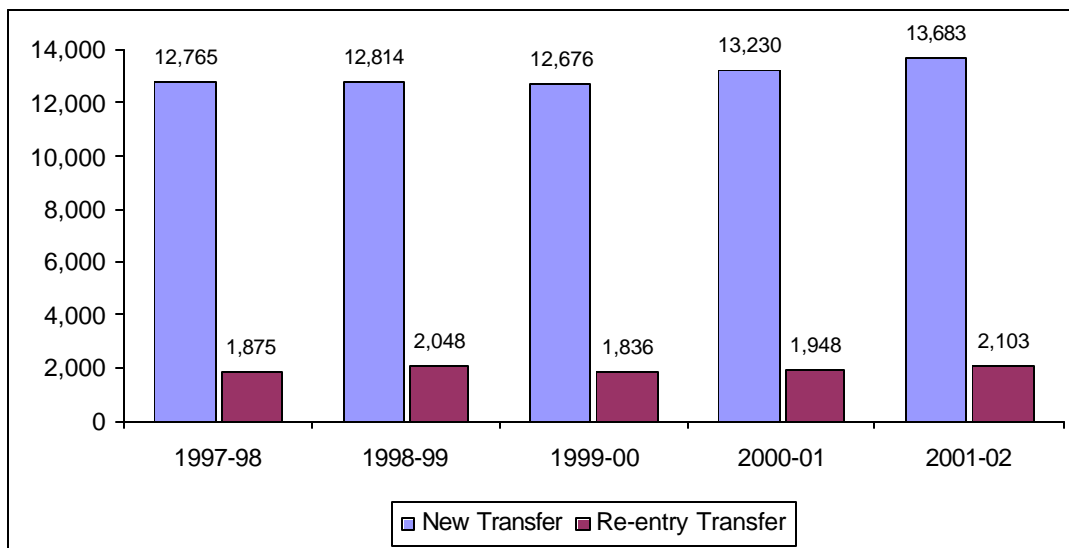


Figure 2 illustrates the trend in WTCS new and re-entry transfers into the UW System. In 2001-02, there were 2,540 new transfers from WTCS districts into the UW System. This is an increase of 250 students, or 10.9%, from 2000-01 and represents an all-time high in the number of WTCS transfer students. The number of re-entry transfers from WTCS increased by 4 (0.8%) from 2000-01.

Between 2000-01 and 2001-02, the UW System experienced increases in new transfers from eleven WTCS districts (ranging from 5.0% to 92.3%) and decreases from five WTCS districts (ranging from 2.9% to 16.7%). Appendix A shows the five-year trend in new transfers from WTCS to the UW System by WTCS district. Appendix B shows the one-year and five-year percent change in new transfers by WTCS district.

Figure 2
WTCS Transfer Students to the UW System by Entrance Status
1997-98 to 2001-02

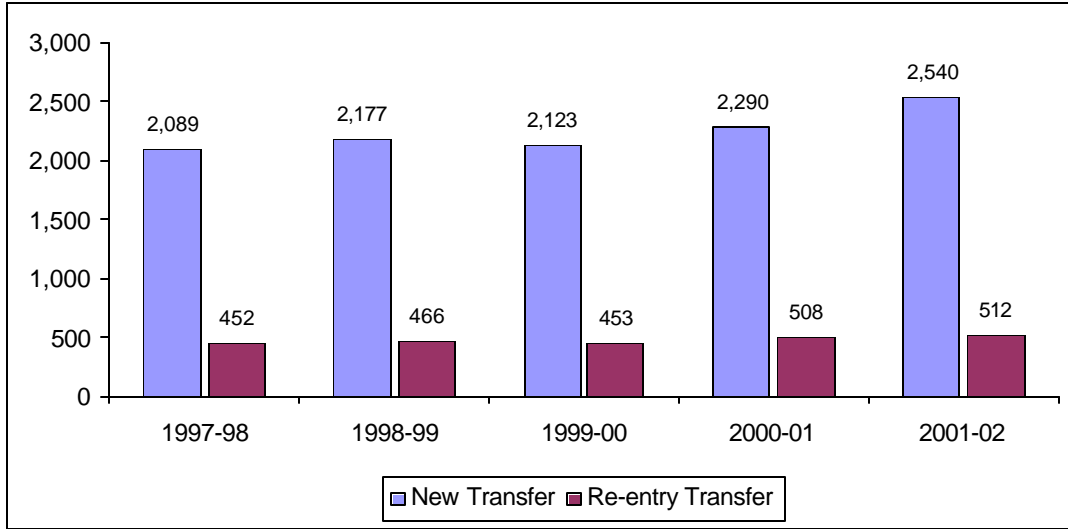
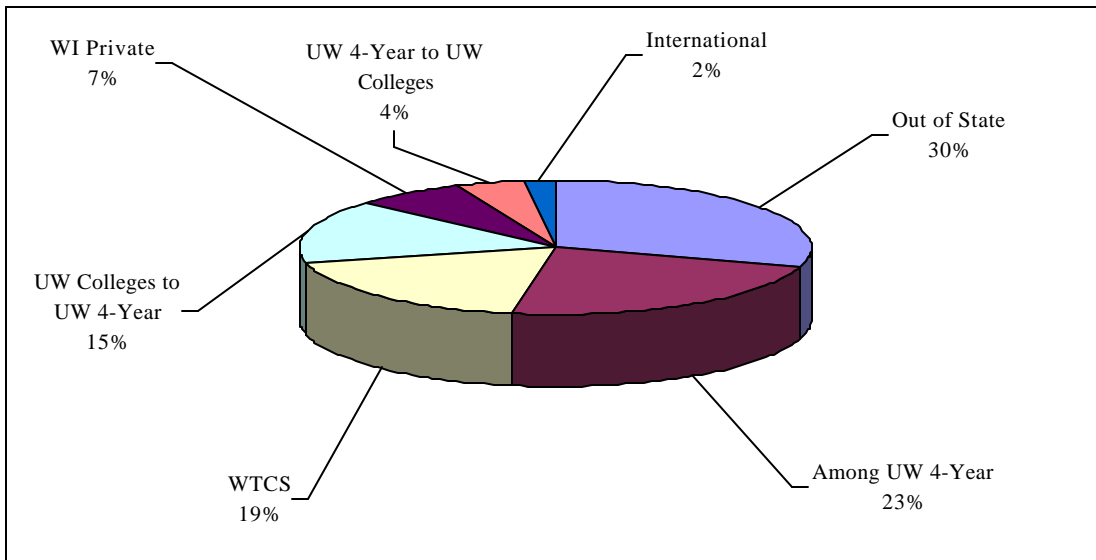


Figure 3 illustrates the proportion of new transfer students within and into the UW System in the 2001-02 year by type of sending institution². WTCS new transfer students constituted 18.6% of the total new transfer population. This proportion has been increasing slowly over the past five year increasing more than one percentage point since 1997-98. The largest share of new transfers into the UW System, 29.6%, continues to come from out-of-state institutions. However, intra-UW System transfers³ (42.8% of transfers) continue to be the largest source of new transfer students for UW institutions. See Appendix C for details on new transfer students and Appendix D for details on re-entry transfer students.

Figure 3
New Transfer Students to the UW System by Type of Sending Institution
2001-02



DEMOGRAPHIC INFORMATION

The previous section provided information on transfer and re-entry transfer students on an annual basis. In this demographic section, information is shown only for new transfer students who entered in the fall semester. Figure 4 shows the distribution of the Fall 2001 new transfer cohort by classification⁴. Fifty-seven percent of WTCS new transfer students entered the UW System as freshmen compared to 23% of the remaining Fall 2001 new transfer cohort. This proportion has increased slightly over the last five years. Appendix E shows the distribution of the Fall 2001 WTCS new transfer cohort to the UW System by both classification and WTCS district.

Figure 4
Fall 2001 New Transfer Cohort
by Student Classification at Entrance

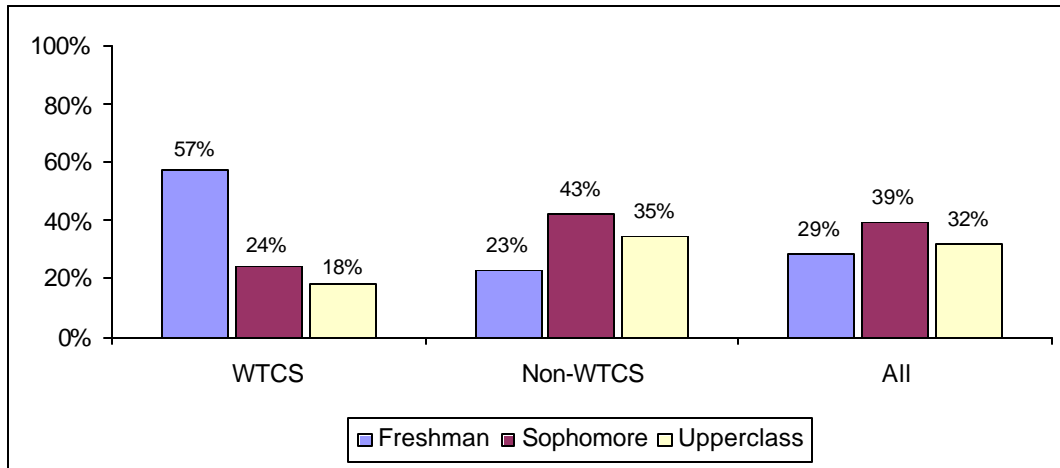


Figure 5 shows the full-time/part-time status⁵ of the Fall 2001 transfer cohort based on the first semester credit load. Thirty-one percent (31%) of the new transfer students from WTCS districts were part-time students while seventeen percent of the remaining Fall 2001 new transfer cohort were part-time students. This distribution has been constant over the last five years. Appendix F shows the distribution of the WTCS new transfers to the UW System by both full-time/part-time status and WTCS district.

Figure 5
Fall 2001 New Transfer Cohort
by Full-Time/Part-Time Status

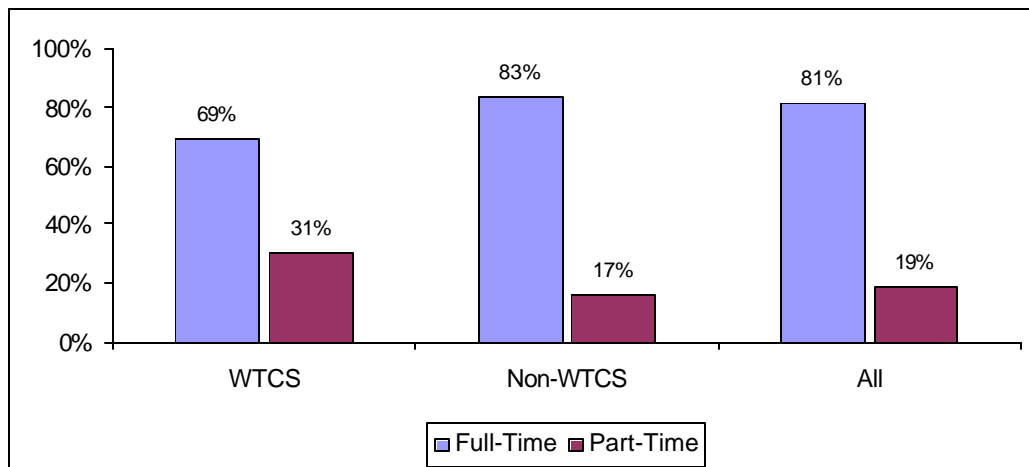


Figure 6 shows the age distribution of the Fall 2001 entering new transfer cohort. Thirty-two percent (32%) of new transfer students from the WTCS were 25 or older while 16% of the remaining Fall 2001 new transfer students were 25 or older. This distribution has remained constant over the last five years. Appendix G shows the distribution of the WTCS new transfers to the UW System by both age group and WTCS district.

Figure 6
Fall 2001 New Transfer Cohort
by Age Group

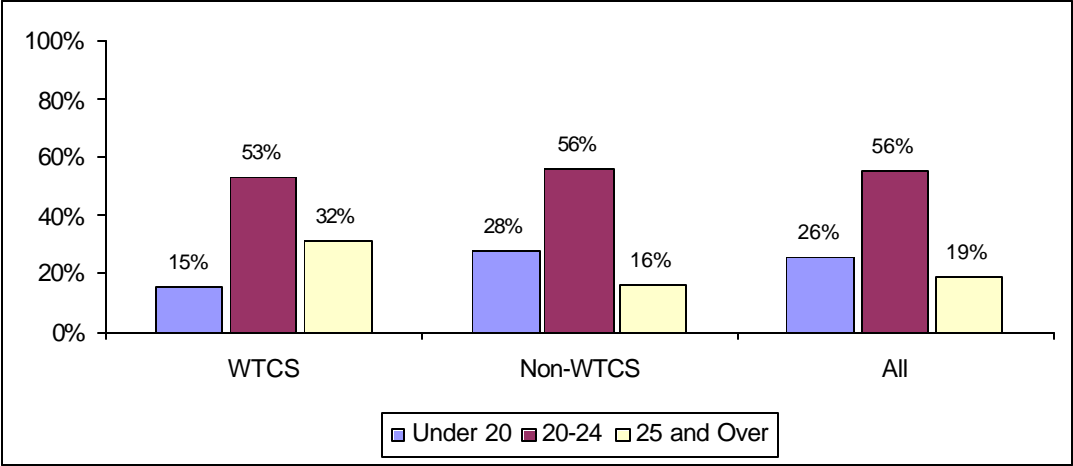
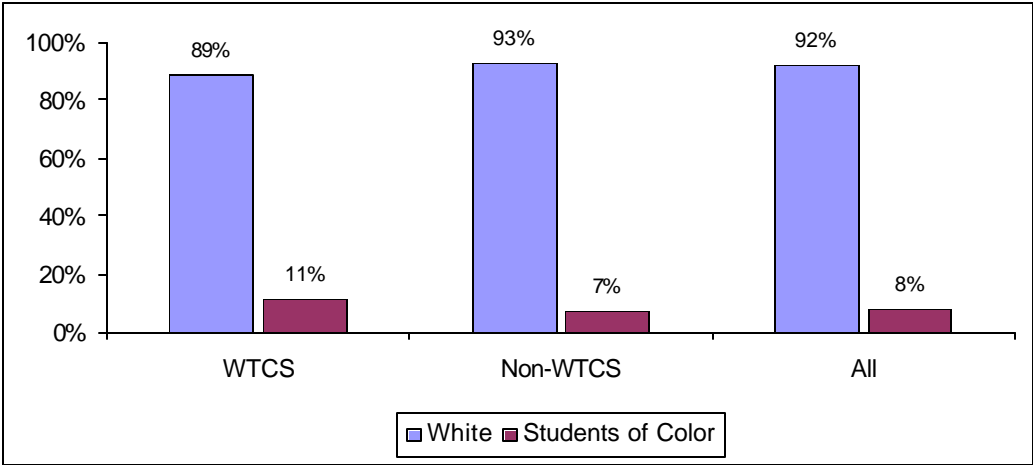


Figure 7 shows the race/ethnicity distribution of the Fall 2001 entering new transfer cohort. Eleven percent (11%) of new transfer students from the WTCS were students of color while 7% of the remaining Fall 2001 new transfer students were students of color. This distribution has remained constant over the last five years. Appendix H shows the distribution of the WTCS new transfers to the UW System by both race/ethnicity group and WTCS district.

Figure 7
Fall 2001 New Transfer Cohort
by Race/Ethnicity Group



OUTCOME INFORMATION

Figure 8 shows the first semester grade-point averages (GPA) for Fall 1999, 2000, and 2001 new transfer students. The average first semester GPA for all new transfer students is 2.9 on a 4.0 scale. There has been no change in the average first semester GPA for the past three groups of total fall new transfer entrants. The average first semester GPA for Fall 2001 WTCS new transfer students, at 2.8, is slightly below the overall average, which includes all new transfer students. Appendix I shows the average first semester GPA of the Fall 2001 WTCS new transfers to the UW System by WTCS district.

Figure 8
Average First-Semester GPAs of New Transfers
by Type of Sending Institution and Cohort Year

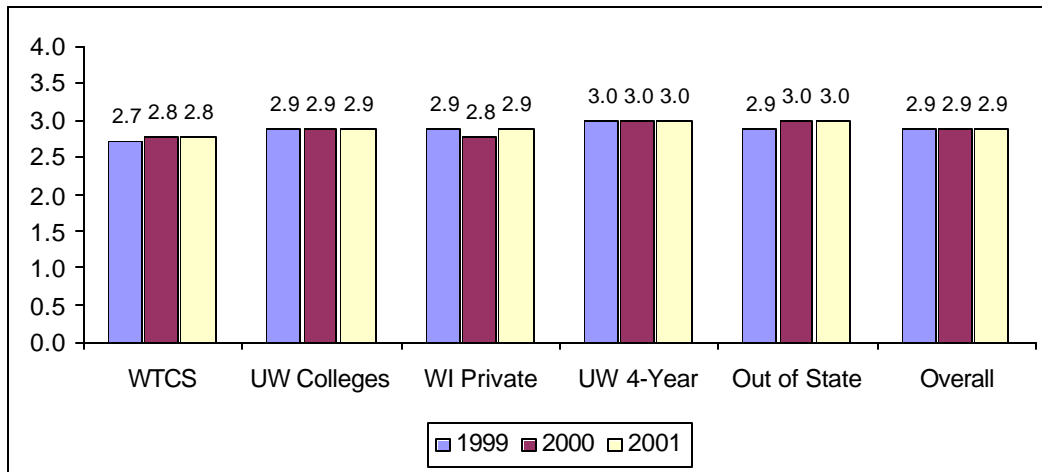
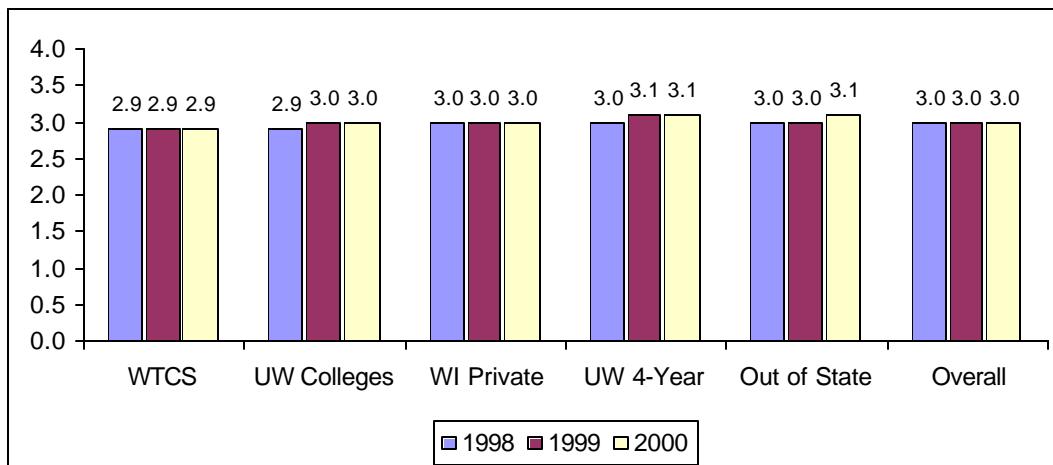


Figure 9 shows the first year grade-point averages (GPA) for Fall 1998, 1999, and 2000 new transfer students. The average first year GPA for all new transfer students is 3.0 on a 4.0 scale. There has been no change in the average first year GPA for the past three groups of total fall new transfer entrants. The average first year GPA for Fall 2000 WTCS new transfer students, at 2.9, is slightly below the overall average. Appendix J shows the average first year GPA of the Fall 2000 WTCS new transfers to the UW System by WTCS district.

Figure 9
Average First-Year GPAs of New Transfers
by Type of Sending Institution and Cohort Year



Figures 10, 11 and 12 show a four-year trend in the 5th year graduation⁶ and 6th year retention⁷ rates of transfers into and within the UW System by type of sending institution and classification at the time of transfer. A combination of the 5th year graduation and 6th year retention rates can be used to predict the eventual transfer student graduation rate.

Figure 10 shows the 5th year graduation and 6th year retention rates for the transfer cohort that entered the UW System classified as freshmen. The combined rate for WTCS freshman transfer students in Fall 1995 (36%) is lower than the combined rate of freshman transfers from all other types of institutions. The combined rate for freshman transfers from the UW Colleges is 60% and is 50% for freshman transfers from UW four-year institutions.

Figure 10
5th Year Graduation and 6th Year Retention Rates for Freshman Transfer Students
by Type of Sending Institution and Cohort Year

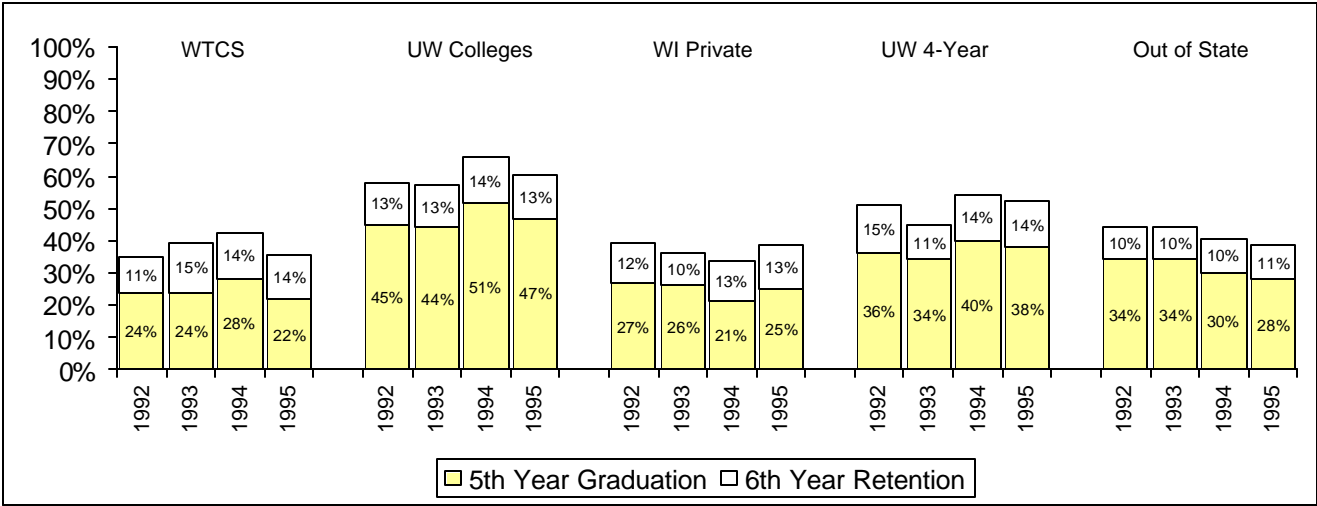


Figure 11 shows the 5th year graduation and 6th year retention rates for the transfer cohort that entered the UW System classified as sophomores. For the four years shown, the combined rate for WTCS sophomore transfers (56% in 1995) is comparable to or exceeds slightly the combined rate for sophomore transfers from Wisconsin private institutions (55% in 1995). The combined rate for WTCS sophomore transfers in Fall 1995 is below the combined rate for sophomore transfers from both the UW Colleges (71%) and UW four-year institutions (69%).

Figure 11
5th Year Graduation and 6th Year Retention Rates for Sophomore Transfer Students
by Type of Sending Institution and Cohort Year

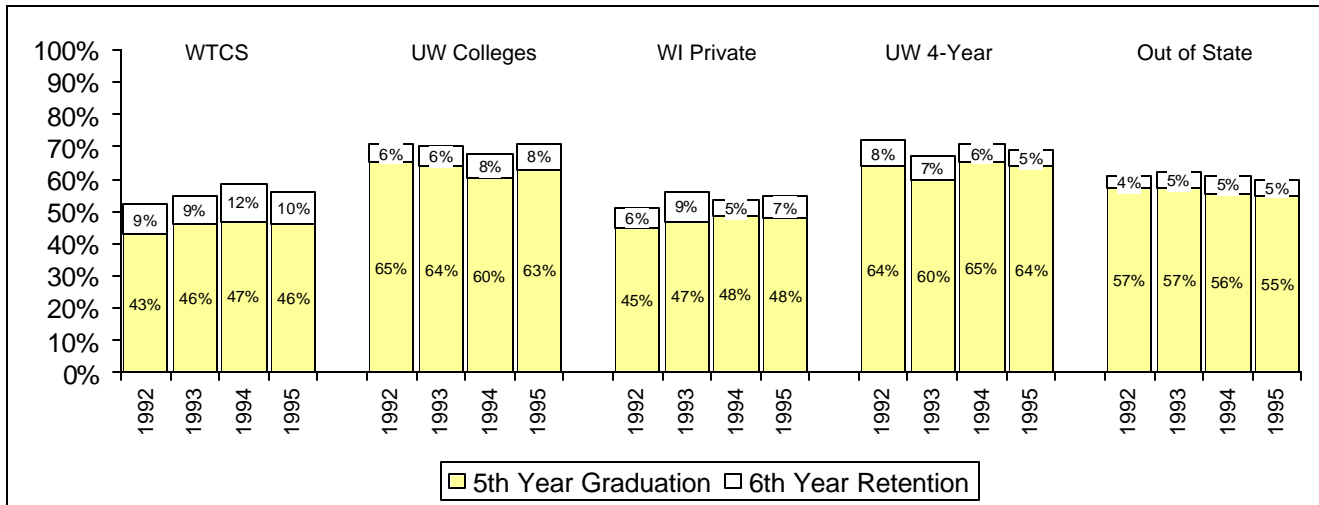
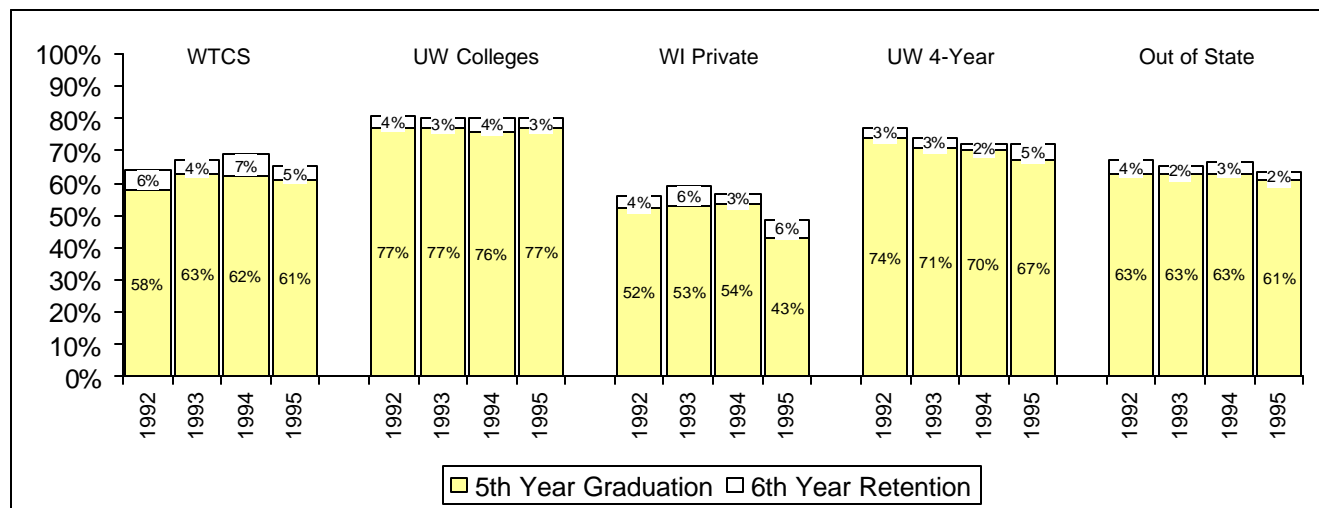


Figure 12 shows the combined 5th year graduation and 6th year retention rates for the transfer cohort that entered the UW System classified as juniors or seniors (upperclass) students. The combined rate for WTCS upperclass transfers exceeds the rate of upperclass transfers from Wisconsin private institutions and, in recent years, has been comparable to the rate of transfers from out-of-state institutions. The combined rate for WTCS transfers (66% in 1995) is below that of upperclass transfers from UW Colleges (80%) and UW four-year institutions (72%).

Figure 12
5th Year Graduation and 6th Year Retention Rates for Upperclass Transfer Students
by Type of Sending Institution and Cohort Year



COLLEGE PARALLEL TRANSFER STUDENTS

The UW System’s new transfer students from the WTCS participated in a variety of WTCS programs and courses. Many of these students were enrolled in a college parallel program or in college parallel courses at Madison Area Technical College, Milwaukee Area Technical College or Nicolet Area Technical College. The WTCS college parallel programs provide courses comparable to those required for the first two years of a UW bachelor’s degree. Students in these programs may transfer up to 72 college parallel credits towards a UW degree. WTCS transfer students who took associate degree (occupational) courses may transfer up to 15 general education credits towards a UW bachelor’s degree and recent WTCS associate degree (occupational) transfer students may have also transferred up to two math and/or science courses. These students may, in addition, have received credit for occupational courses that transferred as part of a program-to-program articulation agreement. For the purposes of this report, the UW System’s new transfer students were matched to program and course files provided by the WTCS and were categorized as college parallel transfers, non-college parallel transfers, or dual enrolled transfer students⁸.

Since 1997-98, the number of WTCS transfer students from non-college parallel programs/courses has increased 44% while the number of WTCS transfer students from college parallel programs/courses has decreased slightly⁹. Of the UW System’s new transfer students from WTCS districts in the 2001-02 academic year, 25% were college parallel transfer students and 55% were non-college parallel transfer students. Since 2001-02 WTCS program and course files were not available, it is not known how many of this year’s transfer students were dual enrolled. Twenty percent (20%) of the UW System’s new transfer students from the WTCS had no corresponding WTCS program or course record indicating that they had enrolled in the WTCS prior to 1994-95 (the earliest files provided) or started in the WTCS in 2001-02 and transferred during the same year. See Appendix K for details.

**Table 1
UW System New Transfer Students from WTCS Districts
by Transfer Year and WTCS Enrollment Type**

	College Parallel		Non-College Parallel		Dual Enrolled		No Match		Total
	#	%	#	%	#	%	#	%	
2001-02	627	25%	1,357	55%	---	---	494	20%	2,478
2000-01	619	28%	1,265	56%	179	8%	177	8%	2,240
1999-00	587	28%	1,144	55%	180	9%	183	9%	2,094
1998-99	601	28%	1,138	53%	170	8%	228	11%	2,137
1997-98	634	31%	940	46%	145	7%	328	16%	2,047

The following demographic information is for fall new transfer students from the WTCS. Table 2 shows the distribution of Fall new transfers from WTCS districts by WTCS enrollment type and student classification at entrance. Sixty-four percent (64%) of the Fall 2001 non-college parallel new transfer students from WTCS entered the UW System as freshmen compared to 32% of the college parallel transfers. The distribution of students by classification at entrance has remained relatively constant over the past five years. The proportion of college parallel students who enter the UW System as freshmen (32%) is greater than the proportion of non-WTCS transfers entering as freshmen (23%).

Table 2
UW System Fall New Transfer Students from WTCS Districts
by WTCS Enrollment Type and Student Classification at Entrance

Fall	Students	Freshman		Sophomore		Upperclass	
		College Parallel	Non-College Parallel	College Parallel	Non-College Parallel	College Parallel	Non-College Parallel
2001	1,409	32%	64%	40%	20%	28%	16%
2000	1,300	30%	62%	42%	25%	28%	13%
1999	1,218	30%	67%	45%	21%	25%	12%
1998	1,206	30%	58%	43%	25%	28%	17%
1997	1,107	29%	62%	42%	25%	28%	13%

Note: Does not include UW new transfer students who had no match on the WTCS program and course files or students who were dual enrolled. Totals may not equal 100% due to rounding.

Table 3 shows the distribution of Fall new transfers from WTCS districts by WTCS enrollment type and first semester credit load. Seventy-nine percent (79%) of the WTCS college parallel transfer students enrolled full time compared to 69% of the non-college parallel transfer students. Over the past five years, the proportion of WTCS transfer students enrolling in the UW System on a full-time basis has decreased slightly. The proportion of college parallel transfer students who enroll full time (79%) is less than the proportion of non-WTCS transfer students who enroll full-time (83%).

Table 3
UW System Fall New Transfer Students from WTCS Districts
by WTCS Enrollment Type and Full-Time/Part-Time Status

Fall	Students	Full-Time		Part-Time	
		College Parallel	Non-College Parallel	College Parallel	Non-College Parallel
2001	1,409	79%	69%	21%	31%
2000	1,300	77%	69%	23%	31%
1999	1,218	80%	71%	20%	29%
1998	1,206	81%	72%	19%	28%
1997	1,107	81%	72%	19%	28%

Note: Does not include UW new transfer students who had no match on the WTCS program and course files or students who were dual enrolled. Totals may not equal 100% due to rounding.

Table 4 shows the distribution of Fall new transfers from WTCS districts by WTCS enrollment type and age group. In Fall 2001, 21% of college parallel transfers were age 25 and over compared to 29% of non-college parallel transfer students. In general, college parallel transfers tend to be slightly younger than their non-college parallel counterparts. The proportion of college parallel transfer students who are 25 or older (21%) is higher than the proportion of non-WTCS transfer students who are under 20 (16%).

Table 4
UW System Fall New Transfer Students from WTCS Districts
by WTCS Enrollment Type and Age Group

Fall	Students	Under 20		20-24		25 and Over	
		College Parallel	Non-College Parallel	College Parallel	Non-College Parallel	College Parallel	Non-College Parallel
2001	1,409	18%	14%	61%	56%	21%	29%
2000	1,300	16%	12%	58%	60%	25%	28%
1999	1,218	20%	15%	60%	62%	19%	25%
1998	1,206	17%	14%	58%	59%	25%	27%
1997	1,107	18%	11%	56%	61%	26%	28%

Note: Does not include UW new transfer students who had no match on the WTCS program and course files or students who were dual enrolled. Totals may not equal 100% due to rounding.

Table 5 shows the distribution of Fall new transfers from WTCS districts by WTCS enrollment type and race/ethnicity group. In Fall 2001, 15% of college parallel transfers were students of color compared to 11% of non-college parallel transfer students. In general, a slightly higher proportion of college parallel transfer students are students of color. This is likely due to the fact that two of the three college parallel programs are in WTCS districts with higher proportions of students of color.

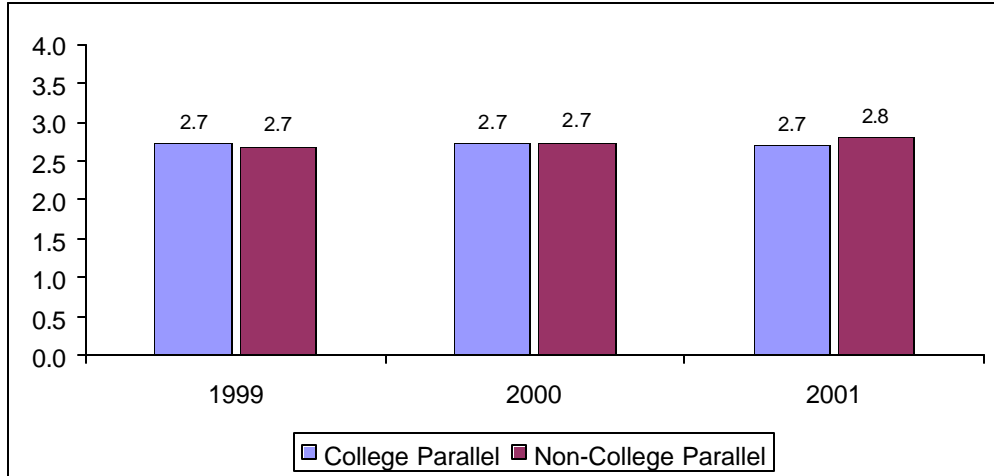
Table 5
UW System Fall New Transfer Students from WTCS Districts
by WTCS Enrollment Type and Race/Ethnicity Group

Fall	Students	Students of Color		White	
		College Parallel	Non-College Parallel	College Parallel	Non-College Parallel
2001	1,409	15%	11%	85%	89%
2000	1,300	16%	10%	84%	90%
1999	1,218	16%	8%	84%	92%
1998	1,206	15%	9%	85%	91%
1997	1,107	16%	8%	84%	92%

Note: Does not include UW new transfer students who had no match on the WTCS program and course files or students who were dual enrolled. Totals may not equal 100% due to rounding.

Figure 13 shows the first-semester GPAs of Fall new transfers from WTCS districts by WTCS enrollment type. After their first semester of enrollment, Fall 2001 non-college parallel transfer students had an average GPA of 2.8 while college parallel transfers had an average GPA of 2.7. These first semester GPAs have been relatively stable over the past three fall cohorts.

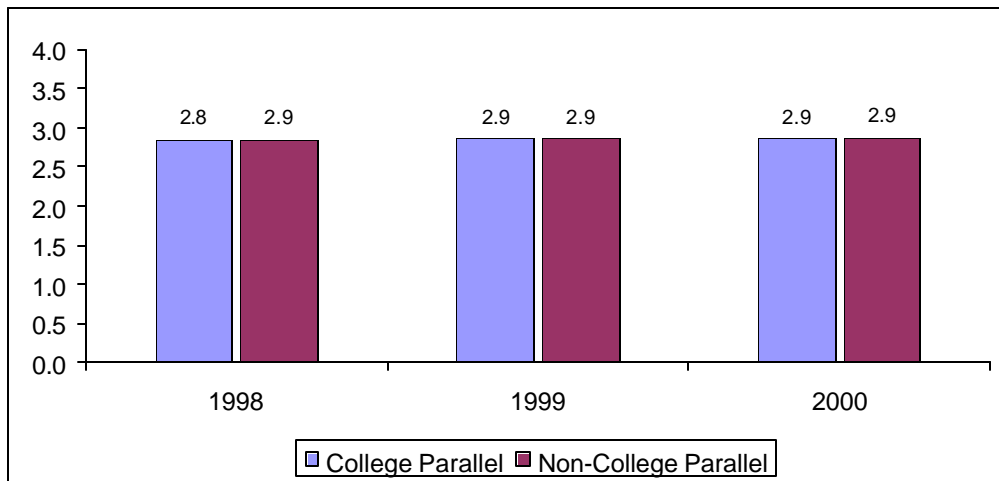
Figure 13
Average First-Semester GPAs of WTCS New Transfers
by Transfer Year and WTCS Enrollment Type



Note: Does not include UW new transfer students who had no match on the WTCS program and course files or students who were dual enrolled.

Figure 14 shows the first-year GPAs of Fall new transfers from WTCS districts by WTCS enrollment type. There are no differences in first-year GPAs between college parallel and non-college parallel transfer students for the past three groups of transfer students. The Fall 2000 new transfer students from the WTCS had an average GPA of 2.9 on a 4.0 scale.

Figure 14
Average First-Year GPAs of WTCS New Transfers
by Transfer Year and WTCS Enrollment Type



Note: Does not include UW new transfer students who had no match on the WTCS program and course files or students who were dual enrolled.

There were not enough years of WTCS program and course data to calculate separate 5th year graduation and 6th year retention rates for college parallel and non-college parallel transfer students. The inclusion of these rates in future years' reports will provide a more complete outcomes section.

CONCLUSIONS

After a decrease in the number of overall transfer students in 1999-00, the number of transfer students to the UW System increased in 2000-01 and again in 2001-02 to the highest number since 1996-97. Following the same pattern, the number of WTCS new transfer students to the UW System increased, after a decrease in 1999-00, to its highest point ever. The proportion of the UW System's overall transfer population made up of WTCS new transfer students increased to 18.6%, greater than proportions from the past few years. Compared to other new transfer students, new transfer students from the WTCS transfer in fewer credits, are older, and are more likely to enroll on a part-time basis.

Average first-semester GPAs for WTCS new transfer students are slightly lower than first-semester GPAs for transfer students from other types of institutions. Average first-year GPAs for WTCS new transfer students are slightly below those of other transfer students. The 5th year graduation rates of WTCS transfer students are below those of students who transfer from the UW Colleges and from UW four-year institutions regardless of the number of transfer credits. The 6th year retention rates for sophomore and upperclass WTCS transfer students are generally higher than the rates for other transfer students suggesting that the higher proportion of WTCS transfer students who enroll on a part-time basis may contribute to their longer time to graduation.

The number of WTCS transfer students from non-college parallel programs/courses has increased by 44% over the past five years, possibly due to articulation agreements and recent changes in transfer policy. The number of WTCS transfer students from college parallel programs/courses has decreased slightly over the same time period. Compared to non-college parallel students, college parallel students transfer in more credits, are younger, are more likely to enroll on a full-time basis, and are slightly more racially diverse. Compared to non-WTCS transfer students, college parallel students transfer in fewer credits, are older, are more likely to enroll on a part-time basis, and are more racially diverse.

APPENDICES

**Appendix A
WTCS New Transfers to the UW System by WTCS District
1997-98 to 2001-02**

	1997-98		1998-99		1999-00		2000-01		2001-02	
	#	%	#	%	#	%	#	%	#	%
Blackhawk	45	2.2%	34	1.6%	64	3.0%	56	2.4%	51	2.0%
Chippewa Valley	116	5.6%	147	6.8%	132	6.2%	123	5.4%	173	6.8%
Fox Valley	117	5.6%	156	7.2%	121	5.7%	170	7.4%	165	6.5%
Gateway	107	5.1%	97	4.5%	102	4.8%	138	6.0%	115	4.5%
Lakeshore	33	1.6%	34	1.6%	41	1.9%	43	1.9%	40	1.6%
Madison	543	26.0%	563	25.9%	527	24.8%	556	24.3%	607	23.9%
Mid-State	57	2.7%	56	2.6%	68	3.2%	80	3.5%	86	3.4%
Milwaukee	547	26.2%	480	22.0%	464	21.9%	478	20.9%	502	19.8%
Moraine	32	1.5%	47	2.2%	51	2.4%	51	2.2%	61	2.4%
Nicolet	66	3.2%	55	2.5%	69	3.3%	64	2.8%	86	3.4%
Northcentral	63	3.0%	90	4.1%	77	3.6%	112	4.9%	127	5.0%
Northeast WI	85	4.1%	101	4.6%	105	4.9%	126	5.5%	154	6.1%
Southwest	18	0.9%	22	1.0%	7	0.3%	18	0.8%	21	0.8%
Waukesha	72	3.4%	108	5.0%	87	4.1%	85	3.7%	122	4.8%
Western WI	148	7.1%	144	6.6%	165	7.8%	138	6.0%	126	5.0%
WI Indianhead	40	1.9%	43	2.0%	43	2.0%	52	2.3%	100	3.9%
Other WTCS	0	0.0%	0	0.0%	0	0.0%	0	0.0%	4	0.2%
Total	2,089	100.0%	2,177	100.0%	2,123	100.0%	2,290	100.0%	2,540	100.0%

**Appendix B
WTCS New Transfers to the UW System by WTCS District
Annual Percentage Change**

	1997-98	1998-99	1999-00	2000-01	2001-02	00-01 to 01-02	97-98 to 01-02
Blackhawk	45	34	64	56	51	-8.9%	13.3%
Chippewa Valley	116	147	132	123	173	40.7%	49.1%
Fox Valley	117	156	121	170	165	-2.9%	41.0%
Gateway	107	97	102	138	115	-16.7%	7.5%
Lakeshore	33	34	41	43	40	-7.0%	21.2%
Madison	543	563	527	556	607	9.2%	11.8%
Mid-State	57	56	68	80	86	7.5%	50.9%
Milwaukee	547	480	464	478	502	5.0%	-8.2%
Moraine	32	47	51	51	61	19.6%	90.6%
Nicolet	66	55	69	64	86	34.4%	30.3%
Northcentral	63	90	77	112	127	13.4%	101.6%
Northeast WI	85	101	105	126	154	22.2%	81.2%
Southwest	18	22	7	18	21	16.7%	16.7%
Waukesha	72	108	87	85	122	43.5%	69.4%
Western WI	148	144	165	138	126	-8.7%	-14.9%
WI Indianhead	40	43	43	52	100	92.3%	150.0%
Other WTCS	0	0	0	0	4	---	---
Total	2,089	2,177	2,123	2,290	2,540	10.9%	21.6%

Appendix C
Undergraduate New Transfers to the UW System by Source in 2001-02

From:	Transfers To:														Total
	MSN	MIL	EAU	GBY	LAC	OSH	PKS	PLT	RVF	STP	STO	SUP	WTW	UWC	
Madison		124	26	21	21	47	7	20	8	31	7	4	30	42	388
Milwaukee	112		13	38	16	47	25	12	3	31	10	1	32	95	435
Eau Claire	72	62		30	31	29	3	6	24	39	69	17	11	45	438
Green Bay	22	60	9		6	25	10	6		17	4	2	8	43	212
La Crosse	58	60	31	6		33	5	17	11	21	9	3	16	36	306
Oshkosh	48	93	15	24	13		9	6	3	40	12		26	110	399
Parkside	12	65	5	4	10	19		1		3	6	1	22	17	165
Platteville	28	30	15	5	15	9	2		9	13	9	2	21	35	193
River Falls	8	12	28	4	8	10		8		13	28	8	8	19	154
Stevens Point	67	62	27	33	17	58	1	10	1		10	12	28	50	376
Stout	9	23	59	9	13	13	3	9	19	19		5	18	35	234
Superior	2	5	8	2	2	4		2		2	3		2	3	35
Whitewater	69	147	9	9	15	29	17	27	3	13	9	4		76	427
Extension				2		1		2		1		1		1	8
UW 4-Year Total	507	743	245	187	167	324	82	126	81	243	176	60	222	607	3,770
Baraboo/Sauk	18	9	2	2	10	5		7	1	14		1	10	2	81
Barron	3	1	24	1	2	2		1	21	7	30	14			106
Fond du Lac	16	16	1	2	2	52	1		5	5	3		4	2	109
Fox Valley	22	31	5	42	10	149		5	2	16	9		4	2	297
Manitowoc	12	38	4	36	5	24		2		5	3		5		134
Marathon	31	15	29	14	14	14		9	3	76	12	5	5		227
Marinette	6	11	1	44	1	6		4		3	4		2		82
Marshfield/Wood	6	6	26	2	18	5		5	6	31	22	1			128
Richland	12	6	1	2	33	3		30	2	12	1	2	2	1	107
Rock	24	27	2		3	3	1	8	1	3			59		131
Sheboygan	13	57	3	13	4	12	1	3	1	8	4		2	2	123
Washington	18	109	3	2	7	24	5	3	1	16	3		8	2	201
Waukesha	25	205	7	2	11	23	5	5	2	9	8	1	59	1	363
Online															0
UW Colleges Total	206	531	108	162	120	322	13	82	45	205	99	24	160	12	2,089
Blackhawk	3	1				1	1	4		2			4	35	51
Chippewa Valley		1	38		3			1	9	3	108	1	1	8	173
Fox Valley		4		4	2	66	2	2	1	7	15		1	61	165
Gateway		16					65	1		1	1	1	17	13	115
Lakeshore		1		6	1	4		1			5			22	40
Madison	256	54	16	10	19	28	2	34	5	29	21	6	80	47	607
Mid-State	1	2	1		2	5	1	1		54	6	2		11	86
Milwaukee	4	359	2	5	2	10	17	5		7	22	1	18	50	502
Moraine		5		2		13		3		3	6			29	61
Nicolet	2	5	1	10	3	9		1		22	10	9		14	86
Northcentral	2	1	3	2	1	7	1	1	1	31	16	2		59	127
Northeast WI		9	1	89		17		1		9	6			22	154
Southwest								15		1				5	21
Waukesha	1	29				1	2	1		1	14		3	70	122
Western WI		5	4	2	73	3	2	5	1	3	13	2	2	11	126
WI Indianhead		1	2			1			4	3	29	48	1	11	100
Other WTCS							2							2	4
WTCS Total	269	493	68	130	106	165	95	76	21	176	272	72	127	470	2,540
Out of State	628	524	278	174	183	166	258	149	304	232	335	298	138	382	4,049
International	43	39	69	2	1	10	9	9	20	12	11	26	5	1	257
WI Private	106	275	39	64	39	78	31	30	10	60	23	22	42	159	978
Grand Total	1,759	2,605	807	719	616	1,065	488	472	481	928	916	502	694	1,631	13,683

Appendix D
Undergraduate Re-Entry Transfers to the UW System by Source in 2001-02

From:	Transfers To:														Total
	MSN	MIL	EAU	GBY	LAC	OSH	PKS	PLT	RVF	STP	STO	SUP	WTW	UWC	
Madison		13	5	2	2	3	9		1	2	1		5	10	53
Milwaukee	11			7	2	9	15	3	1	3	1		3	24	79
Eau Claire	2	1		2	3		2		4	2	16		2	6	40
Green Bay	3	4	3			1				2			2	10	25
La Crosse	3	5	5			2	3	1	3	2		3	3	7	37
Oshkosh	4	14		5	2		3			4		1		30	63
Parkside	2	21	1							2			1		27
Platteville	61	1	11	4	1	1	2		2	2	4	1	1	6	97
River Falls	4	2	1				1	1		4	2			6	21
Stevens Point	23	6	5	6	3	1	4	3			1		2	34	88
Stout	2	1	2					2	1	4			1	5	18
Superior		1	1						1	1	2			4	10
Whitewater	5	7	2	2		2	6	1	1		1	1		8	36
Extension	3	2	2	1		2								1	11
UW 4-Year Total	123	78	38	29	13	21	45	11	14	28	28	6	20	151	605
Baraboo/Sauk						1				3	1				5
Barron			2					1	1		1		1		6
Fond du Lac	1	2				10				1			1		15
Fox Valley	4	3		2		21				2	2		2		36
Manitowoc	3	2		6		2	1						2		16
Marathon	1		1		1	3				3	1				10
Marinette		2		5		1				2					10
Marshfield/Wood			1			1				3	1				6
Richland	1								1						2
Rock	4	1		1		2							16	1	25
Sheboygan	1	2	1	1		2		1			1		1		10
Washington	1	5				1				1					8
Waukesha		15						2	2	2			6		27
Online				1											1
Other														1	1
UW Colleges Total	16	32	5	16	1	44	1	4	4	17	7	0	29	2	178
Blackhawk							1						1	3	5
Chippewa Valley	1		13						2	1	13			1	31
Fox Valley		1		1		22				1				12	37
Gateway	1						40	1	1		1		5		49
Lakeshore														4	4
Madison	91	2	1			3	1	5	1	5	2	2	11	13	137
Mid-State		1	2							13				5	21
Milwaukee		111	1	1		2	7	2		4	1		2	4	135
Moraine						2								5	7
Nicolet						1				4				1	6
Northcentral				1		1				2				15	19
Northeast WI	1			21		3								2	27
Southwest								1						1	2
Waukesha								1					1	5	7
Western WI			1		11						1			1	14
WI Indianhead			1		1						3	3		3	11
WTCS Total	94	115	19	24	12	34	49	10	4	30	21	5	20	75	512
Out of State	278	43	20	22	23	5	59	10	36	21	32	15	11	35	610
International	61	2	2			1	2			1			1		70
WI Private	11	29	7	16	1	13	13	1		9	3	3	2	20	128
Grand Total	583	299	91	107	50	118	169	36	58	106	91	29	83	283	2,103

Appendix E
Student Classification of Fall 2001 WTCS New Transfers to the UW System
by WTCS District

	Freshman		Sophomore		Upperclass		Total	
	#	%	#	%	#	%	#	%
Blackhawk	28	82.4%	6	17.6%	0	0.0%	34	100.0%
Chippewa Valley	52	53.1%	15	15.3%	31	31.6%	98	100.0%
Fox Valley	79	74.5%	17	16.0%	10	9.4%	106	100.0%
Gateway	68	91.9%	5	6.8%	1	1.4%	74	100.0%
Lakeshore	19	73.1%	2	7.7%	5	19.2%	26	100.0%
Madison	133	34.5%	155	40.3%	97	25.2%	385	100.0%
Mid-State	37	75.5%	8	16.3%	4	8.2%	49	100.0%
Milwaukee	162	54.0%	85	28.3%	53	17.7%	300	100.0%
Moraine	28	70.0%	4	10.0%	8	20.0%	40	100.0%
Nicolet	25	45.5%	14	25.5%	16	29.1%	55	100.0%
Northcentral	53	64.6%	15	18.3%	14	17.1%	82	100.0%
Northeast WI	61	70.1%	12	13.8%	14	16.1%	87	100.0%
Southwest	13	92.9%	1	7.1%	0	0.0%	14	100.0%
Waukesha	48	64.0%	17	22.7%	10	13.3%	75	100.0%
Western WI	39	72.2%	7	13.0%	8	14.8%	54	100.0%
WI Indianhead	42	59.2%	15	21.1%	14	19.7%	71	100.0%
Other WTCS	1	50.0%	1	50.0%	0	0.0%	2	100.0%
Total	888	57.2%	379	24.4%	285	18.4%	1,552	100.0%

Appendix F
Full-Time/Part-Time Status of Fall 2001 WTCS New Transfers to the UW System
by WTCS District

	Full-Time		Part-Time		Total	
	#	%	#	%	#	%
Blackhawk	12	35.3%	22	64.7%	34	100.0%
Chippewa Valley	80	81.6%	18	18.4%	98	100.0%
Fox Valley	67	63.2%	39	36.8%	106	100.0%
Gateway	42	56.8%	32	43.2%	74	100.0%
Lakeshore	13	50.0%	13	50.0%	26	100.0%
Madison	304	79.0%	81	21.0%	385	100.0%
Mid-State	36	73.5%	13	26.5%	49	100.0%
Milwaukee	176	58.7%	124	41.3%	300	100.0%
Moraine	21	52.5%	19	47.5%	40	100.0%
Nicolet	40	72.7%	15	27.3%	55	100.0%
Northcentral	57	69.5%	25	30.5%	82	100.0%
Northeast WI	62	71.3%	25	28.7%	87	100.0%
Southwest	10	71.4%	4	28.6%	14	100.0%
Waukesha	48	64.0%	27	36.0%	75	100.0%
Western WI	44	81.5%	10	18.5%	54	100.0%
WI Indianhead	64	90.1%	7	9.9%	71	100.0%
Other WTCS	2	100.0%	0	0.0%	2	100.0%
Total	1,078	69.5%	474	30.5%	1,552	100.0%

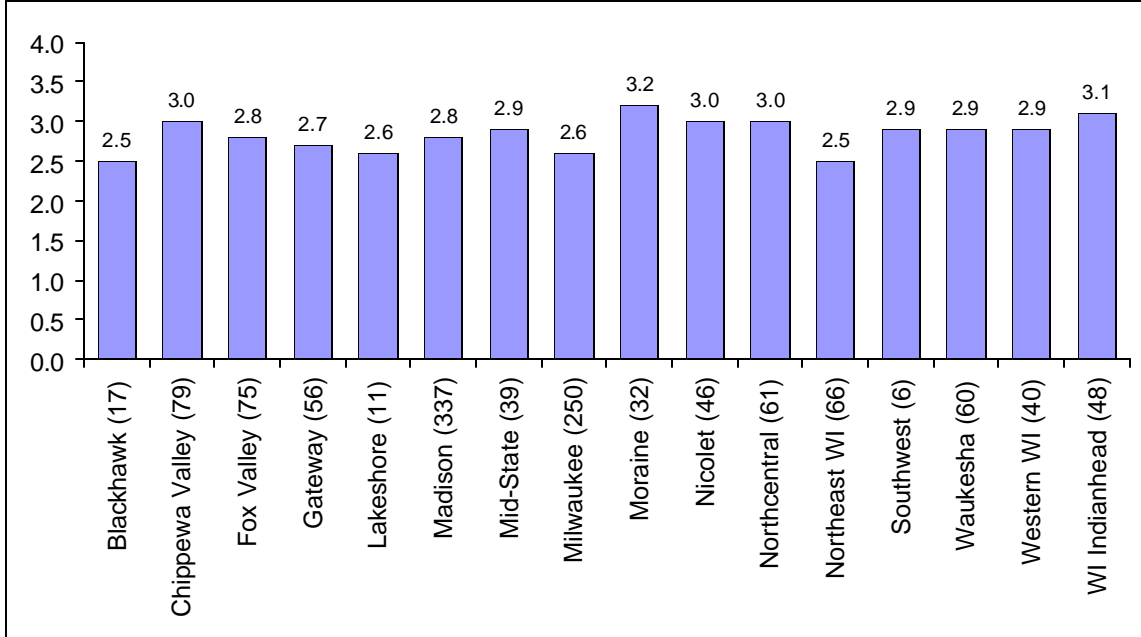
Appendix G
Age Distribution of Fall 2001 WTCS New Transfers to the UW System
by WTCS District

	Under 20		20-24		25 and Over		Total	
	#	%	#	%	#	%	#	%
Blackhawk	3	8.8%	13	38.2%	18	52.9%	34	100.0%
Chippewa Valley	9	9.2%	54	55.1%	35	35.7%	98	100.0%
Fox Valley	17	16.0%	53	50.0%	36	34.0%	106	100.0%
Gateway	13	17.6%	33	44.6%	28	37.8%	74	100.0%
Lakeshore	2	7.7%	5	19.2%	19	73.1%	26	100.0%
Madison	66	17.1%	229	59.5%	90	23.4%	385	100.0%
Mid-State	8	16.3%	22	44.9%	19	38.8%	49	100.0%
Milwaukee	31	10.3%	176	58.7%	93	31.0%	300	100.0%
Moraine	3	7.5%	22	55.0%	15	37.5%	40	100.0%
Nicolet	17	30.9%	20	36.4%	18	32.7%	55	100.0%
Northcentral	15	18.3%	44	53.7%	23	28.0%	82	100.0%
Northeast WI	11	12.6%	50	57.5%	26	29.9%	87	100.0%
Southwest	1	7.1%	4	28.6%	9	64.3%	14	100.0%
Waukesha	11	14.7%	37	49.3%	27	36.0%	75	100.0%
Western WI	13	24.1%	29	53.7%	12	22.2%	54	100.0%
WI Indianhead	20	28.2%	30	42.3%	21	29.6%	71	100.0%
Other WTCS	0	0.0%	2	100.0%	0	0.0%	2	100.0%
Total	240	15.5%	823	53.0%	489	31.5%	1,552	100.0%

Appendix H
Race/Ethnicity of Fall 2001 WTCS New Transfers to the UW System
by WTCS District

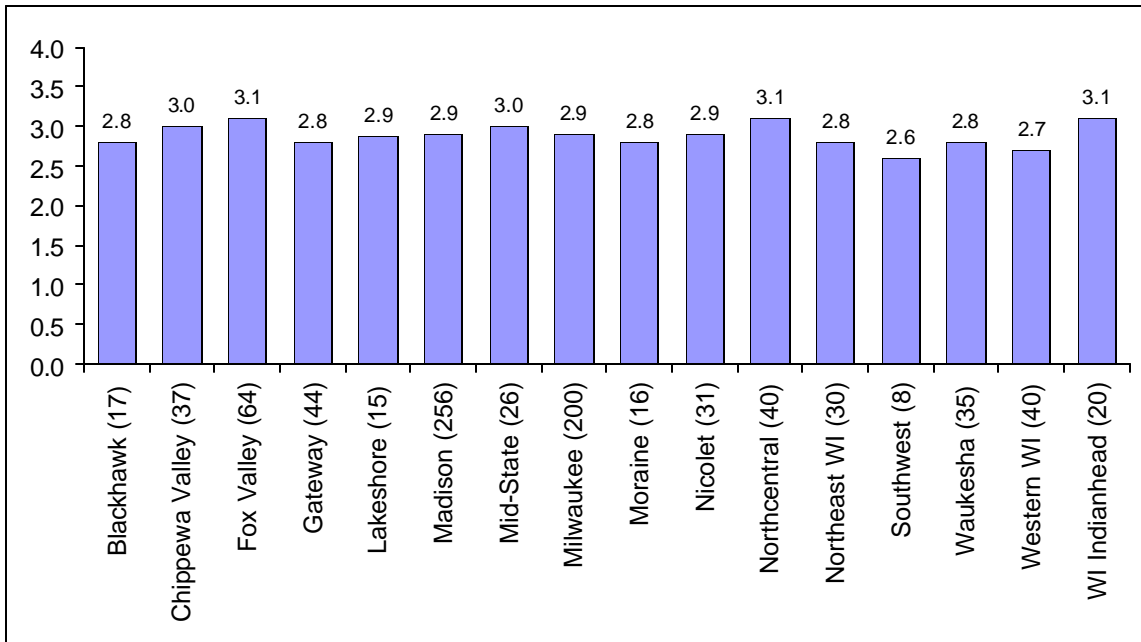
	White		Students of Color		Total	
	#	%	#	%	#	%
Blackhawk	29	85.3%	5	14.7%	34	100.0%
Chippewa Valley	97	99.0%	1	1.0%	98	100.0%
Fox Valley	101	95.3%	5	4.7%	106	100.0%
Gateway	61	82.4%	13	17.6%	74	100.0%
Lakeshore	22	84.6%	4	15.4%	26	100.0%
Madison	347	90.1%	38	9.9%	385	100.0%
Mid-State	46	93.9%	3	6.1%	49	100.0%
Milwaukee	219	73.0%	81	27.0%	300	100.0%
Moraine	38	95.0%	2	5.0%	40	100.0%
Nicolet	54	98.2%	1	1.8%	55	100.0%
Northcentral	77	93.9%	5	6.1%	82	100.0%
Northeast WI	82	94.3%	5	5.7%	87	100.0%
Southwest	14	100.0%	0	0.0%	14	100.0%
Waukesha	72	96.0%	3	4.0%	75	100.0%
Western WI	51	94.4%	3	5.6%	54	100.0%
WI Indianhead	68	95.8%	3	4.2%	71	100.0%
Other WTCS	2	100.0%	0	0.0%	2	100.0%
Total	1,380	88.9%	172	11.1%	1,552	100.0%

Appendix I
Average First-Semester GPAs of Fall 2001 WTCS New Transfers to the UW System
by WTCS District



Note: Figures in parentheses following the district name indicate the number of students used in the calculation of average GPA.

Appendix J
Average First-Year GPAs of Fall 2000 WTCS New Transfers to the UW System
by WTCS District



Note: Figures in parentheses following the district name indicate the number of students used in the calculation of average GPA.

Appendix K
UW System New Transfer Students from WTCS Districts
by Transfer Year and WTCS Enrollment Type

	College Parallel		Non-College Parallel		Dual Enrolled		No Match	Total
	Program	Courses	Program	Courses	CP	Non-CP		
2001-02	563	64	1,185	172	---	---	494	2,478
2000-01	538	81	1,020	245	46	133	177	2,240
1999-00	499	88	935	209	42	138	183	2,094
1998-99	538	63	919	219	61	109	228	2,137
1997-98	579	55	772	168	52	93	328	2,047
1996-97	609	89	593	127	57	81	393	1,949

END NOTES

¹ Academic year is defined as the summer and following fall, winter, and spring terms.

² Type of sending institution is based on the last institution attended by a student prior to transfer. For example, a student who earned credits at one of the UW Colleges, transferred to a WTCS district and then transferred back into a UW institution would be classified as a WTCS transfer student.

³ Intra-UW System transfers are transfers among UW four-year institutions, transfers from UW Colleges to UW four-year institutions, and transfers from UW four-year institutions to UW Colleges.

⁴ Student classification is based on the total number of degree credits which may have been accumulated from more than one transfer institution. While credit ranges differ among UW institutions, in general, freshman students have 0-29 degree credits, sophomore students between 30 and 59 credits, juniors between 60 and 89 credits, and seniors have 90 or more credits. The classifications used for this report are those provided by the UW institutions.

⁵ Part-time status for undergraduates is defined as fewer than twelve (12) credits.

⁶ The 5th year graduation rate is the percentage of students who received a Bachelor's degree by the end of the 5th year after transfer.

⁷ The 6th year retention rate is the percentage of students who had not received a Bachelor's degree but were still enrolled in the fall of the 6th year after transfer.

⁸ College parallel students were defined as students who were most recently enrolled in a college parallel program (rather than in an associate (occupational), technical or certificate program) or who most recently took college parallel courses (rather than associate, technical or certificate courses). Non-college parallel students were defined as students who were most recently enrolled in an associate (occupational), technical or certificate program or who most recently took associate (occupational), technical or certificate courses. UW System new transfer students who were enrolled in both UW and WTCS districts in the same year (dual enrolled) were excluded from the demographic and outcome analyses.

⁹ Annual transfer numbers in other sections of this report count all transfer "acts". For example, a student who transferred twice during the same year is counted twice, once at each receiving institution. A transfer student who is enrolled at more than one UW institution in the same semester is also counted twice, once at each receiving institution. For the college parallel section, an unduplicated headcount of students is used; therefore, the annual number of new transfer students from WTCS districts (2,290 for 2000-01) will not match the numbers in Table 1 (2,250). For 2000-01, 40 students either transferred more than once or were enrolled at more than one UW institution.