



Wisconsin Technical College System (WTCS) to  
the University of Wisconsin System (UWS)  
Program Assessment Study

November 2008

Prepared by:  
The University of Wisconsin System  
Office of Policy Analysis and Research  
1534 Van Hise Hall  
1220 Linden Drive  
Madison, WI 53706  
608.262.6441  
OPAR@uwsa.edu  
<http://www.uwsa.edu/opar>

## Table of Contents

Introduction .....	2
Background.....	2
Establishment of a Cohort .....	2
WTCS/UWS Enrollment.....	3
Student Characteristics by WTCS Program Type .....	4
WTCS Degree Completion Status.....	5
Initial UWS Student Classification .....	5
Initial UWS Entrance Status .....	6
Initial UWS Full-Time/Part-Time Status.....	7
Initial UWS Age Range .....	7
Student Race/Ethnicity .....	8
Student Outcomes.....	8
Second Year Retention Rate.....	8
Six-Year Graduation Rate .....	8
First Year GPA.....	9
Linking WTCS Programs to UWS Majors.....	9
Program-Specific Enrollments and Assessment .....	10
Nursing.....	10
Early Childhood Education .....	13
Information Technology (IT).....	15
Marketing .....	18
Criminal Justice.....	21
Accounting .....	24
Engineering Technology .....	27
Liberal Arts.....	29
Summary .....	32
Appendices .....	33
End Notes .....	49

## **INTRODUCTION**

---

### **Background**

Over the last twelve years, the number of program-to-program transfer articulation agreements between the Wisconsin Technical College System (WTCS) and the University of Wisconsin System (UWS) has continued to grow. Currently, there are over 500 articulation agreements, which allow students to transfer courses from a specific program at a WTCS district into a similar program at a UW institution and complete a bachelor's degree. The agreements provide transfer opportunities for students in applied associate degree programs beyond the standard transfer of general education courses<sup>1</sup>. In 2000, new "systemwide" agreements were developed in the areas of nursing and early childhood education. The new agreements are aimed toward a 2+2 model where the WTCS transfer students enter the UWS program with or close to junior standing.

In fall 2000, the Joint Administration Committee on Academic Programs (JACAP) established a joint working group to design an appropriate reporting mechanism for program assessment and improvement. In March 2001, a Data Exchange Memorandum of Understanding<sup>2</sup> between the WTCS Board and the UWS Board of Regents was developed. The group's primary goals were to: (1) track students who were enrolled at the WTCS and subsequently enrolled at the UWS and identify both their originating WTCS program and subsequent UWS major; (2) identify potential program areas for developing new transfer articulation agreements; and (3) assess the academic outcomes of these students, including retention and graduation. The working group's initial report in 2001 provided a baseline for the assessment of both current and new agreements. This sixth report continues and expands the WTCS programs assessed in previous reports.

### **Establishment of a Cohort**

Two factors determine a student's inclusion in the WTCS/UWS Assessment Study. First, the student must have initially enrolled at a WTCS district. Second, the student must have concurrently or subsequently enrolled at a UW campus. Students' assignment to a specific cohort was based on their last year at the specific technical college and their initial year of UWS enrollment. For example, a student, who attended MATC-Madison in calendar years 1994 and 1995 and then enrolled at UW-Madison in fall 1996, would have a "Last WTCS Year" of 1995-96 and be in the 1996-97 UWS cohort. For additional information about the cohort formation, refer to the technical notes<sup>3</sup>.

**WTCS/UWS ENROLLMENT**

The 2008 Program Assessment Study reports on 55,485 students who attended a WTCS district in fiscal years 1994-95 through 2006-07 and concurrently or subsequently enrolled at a UW institution. Overall, the majority of students initially enrolled at a UW institution in the year directly following their last WTCS year. Some students enrolled in the WTCS and UWS in the same academic year, either during the same term or at a WTCS district one term and at a UW campus the following term, while a large group of WTCS students delayed their UWS enrollment for a year or more. For example, of the 4,431 students who were last enrolled in the WTCS in 1995-96 and concurrently or later enrolled in a UW institution, 1,823 (41%) students initially enrolled at a UW institution in 1996-97, 631 (14%) were enrolled in both Systems in 1995-96, and 1,977 (45%) waited more than one year before enrollment in the UWS (Table 1). Appendix A shows UWS enrollment for the overall cohort by WTCS district and initial UWS enrollment year.

**Table 1  
WTCS/UWS Assessment Cohorts  
by Last WTCS and Initial UWS Enrollment Years**

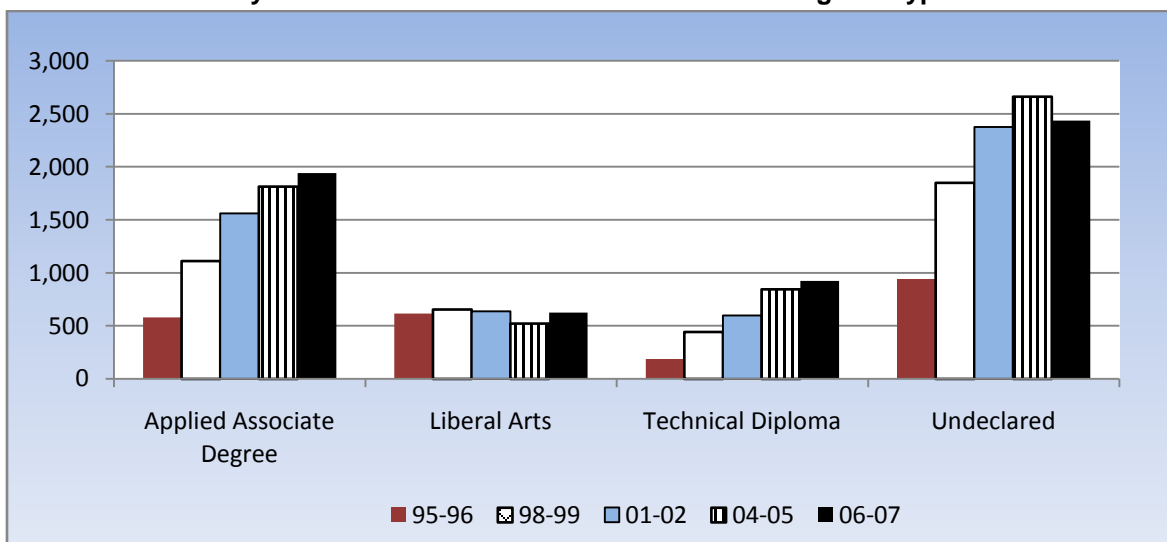
Last WTCS Year	UWS Cohort Year												Total
	95-96	96-97	97-98	98-99	99-00	00-01	01-02	02-03	03-04	04-05	05-06	06-07	
1994-95	1,697	571	323	268	195	159	130	92	86	56	59	39	3,675
1995-96	631	1,823	603	342	267	205	179	101	95	79	61	45	4,431
1996-97		651	1,752	623	365	285	213	167	110	81	84	71	4,402
1997-98			684	2,059	676	364	295	192	124	131	81	76	4,682
1998-99				768	2,143	800	425	273	179	140	99	87	4,914
1999-00					733	2,136	726	361	274	169	165	141	4,705
2000-01						721	2,369	757	346	253	172	132	4,750
2001-02							832	2,418	784	375	251	208	4,868
2002-03								908	2,670	882	345	246	5,051
2003-04									865	2,756	912	369	4,902
2004-05										922	2,792	867	4,581
2005-06											878	2,749	3,627
2006-07												897	897
Total	2,328	3,045	3,362	4,060	4,379	4,670	5,169	5,269	5,533	5,844	5,899	5,927	55,485

## STUDENT CHARACTERISTICS BY WTCS PROGRAM TYPE

The number of students who were enrolled in a WTCS applied associate degree program and then came to a UW has increased significantly over the last 12 years, from 580 in 1995-96 to 1,941 in 2006-07 (Figure 1). There has also been an increase in students who enrolled in WTCS technical diploma programs and concurrently or subsequently enrolled in the UW, from 188 in 1995-96 to 923 in 2006-07. In contrast, the number of students from liberal arts programs offered at Madison, Milwaukee, and Nicolet Area Technical Colleges has fluctuated between 500 and 700. The largest group of WTCS students, who later attend a UW institution, were not enrolled in a specific WTCS program, increasing from 943 in 1995-96 to 2,437 in 2006-07. Possibly, these undeclared students attended the WTCS to take only one or two courses.

Of the 6,954 WTCS technical diploma students in the cohort, the majority (73%) were enrolled in the WTCS Health-Related Professions program group, 13 percent were enrolled in the Trades/Technical program group, and the remaining (14%) were in other WTCS program groups.

**Figure 1**  
**WTCS/UWS Assessment Cohorts**  
**by Initial UWS Enrollment Year and WTCS Program Type**



From 1995-96 to 2006-07, the percentage of the cohort enrolled in WTCS applied associate degree programs increased from 25 percent to 33 percent and the proportion of the cohort enrolled in technical diploma programs grew from 8 percent to 16 percent. In contrast, the share of WTCS liberal arts students in the cohort declined from 27 percent in 1995-96 to 11 percent in 2006-07 (Table 2).

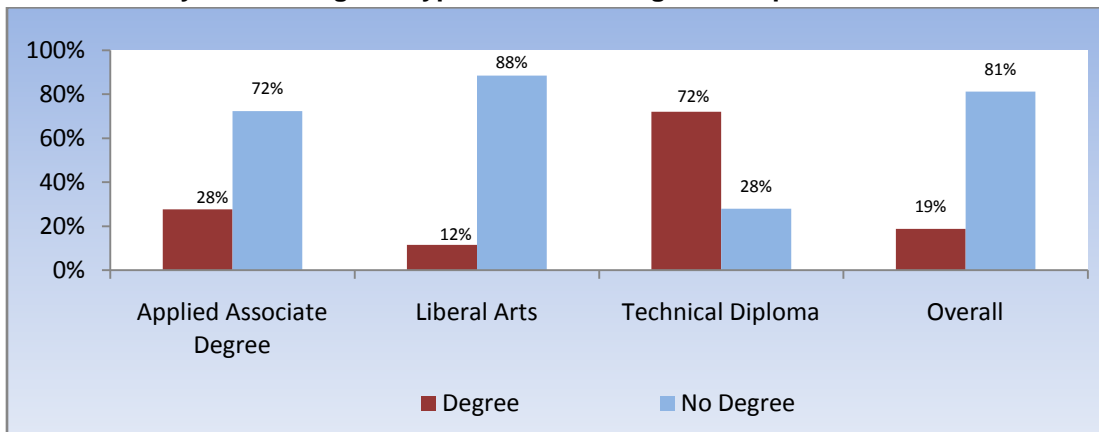
**Table 2**  
**WTCS/UWS Assessment Cohorts**  
**by Initial UWS Enrollment Year and WTCS Program Type**

Program Type	UWS Cohort Year					Overall
	95-96	98-99	01-02	04-05	06-07	
Applied Associate Degree	25%	27%	30%	31%	33%	30%
Liberal Arts	27%	16%	12%	9%	11%	13%
Technical Diploma	8%	11%	12%	14%	16%	12%
Undeclared	41%	46%	46%	46%	41%	45%
Total	100%	100%	100%	100%	100%	100%

**WTCS Degree Completion Status**

Of the WTCS students enrolled in applied associate degree programs who later attended a UW institution, 28 percent of the students earned a WTCS applied associate degree. Only 12 percent of the WTCS liberal arts students earned the WTCS Associate in Arts or Science Degree prior to enrolling at a UW institution. In contrast, 72 percent of the technical diploma students completed their program before their UWS enrollment. Appendix B shows UWS enrollment for the overall cohort by the UWS initial enrollment year, WTCS program type, and WTCS degree completion status.

**Figure 2**  
**WTCS/UWS Assessment Cohorts - Overall**  
**by WTCS Program Type and WTCS Degree Completion Status**

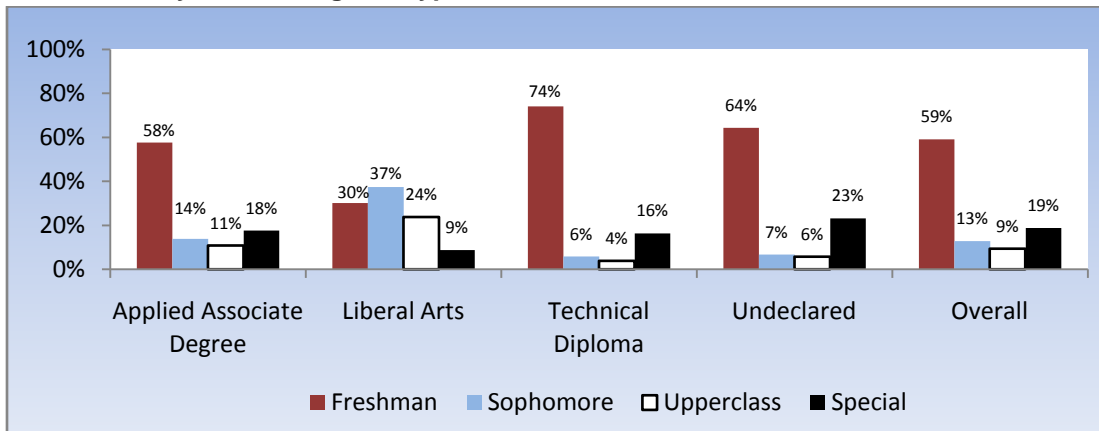


*\*Overall includes students who were not enrolled in a specific WTCS program.*

**Initial UWS Student Classification**

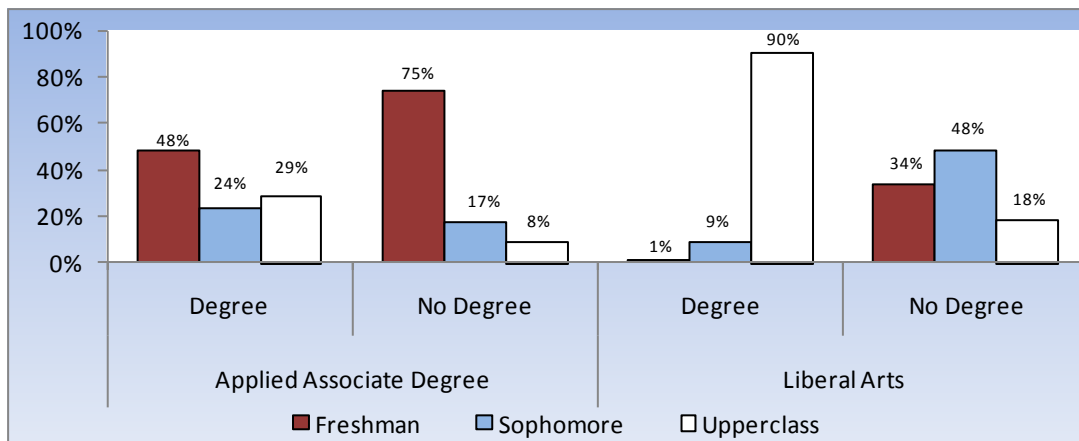
The majority of WTCS students who were enrolled in applied associate degree programs (58%) and technical diplomas (74%) entered the UWS as freshmen, compared to 30 percent for students in WTCS liberal arts programs. For students who were not enrolled in a specific WTCS program, the percentage was 64 percent. Overall, 19 percent of the WTCS students in the cohort entered the UWS as special (non degree-seeking) students. While many special students enroll only to take a few classes, some of them may later enroll in degree programs and graduate. Appendix C presents the detailed information by initial UWS enrollment year and student classification.

**Figure 3**  
**WTCS/UWS Assessment Cohorts - Overall**  
**by WTCS Program Type and Initial UWS Student Classification**



Students who earned a WTCS degree prior to their enrollment in the UWS were more likely to enter the UWS as upperclassmen (juniors/seniors) than students who did not earn a WTCS degree (Figure 4). Twenty-nine percent (29%) of the students who earned a WTCS applied associate degree entered the UWS as upperclassmen, compared to 9 percent for those who enrolled in an applied associate degree program but did not complete their WTCS program before their enrollment at the UWS. The gap is even wider for WTCS liberal arts students, 90 percent versus 18 percent. Appendix D shows enrollment by WTCS degree completion status and initial UWS student classification for applied associate degree and liberal arts students in selected years.

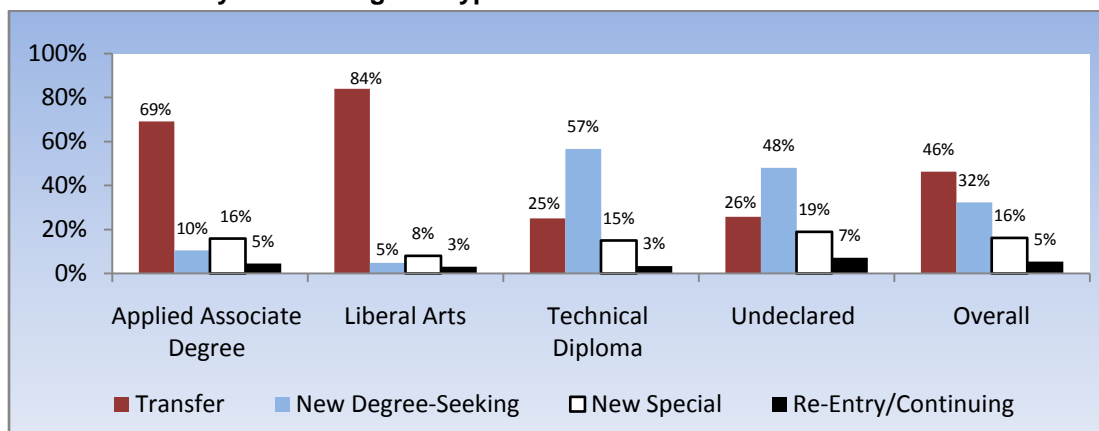
**Figure 4**  
**WTCS/UWS Assessment Cohorts - Overall**  
**by WTCS Program Type, WTCS Degree Completion Status,**  
**and Initial UWS Student Classification**



**Initial UWS Entrance Status**

Almost half of the students (46% overall), coming to the UWS after attending a WTCS district, entered as transfer students (Figure 5), that is, they notified the UW institution of their prior coursework and the transfer work was evaluated. Almost one third of the students in the cohort were new, degree-seeking students. Often, these students receive credit for their prior coursework later in their UW enrollment. Since students who enroll as specials are not degree-seeking, their prior coursework is usually not evaluated. “Re-entry” students re-enrolled at the UW with no transfer work. “Continuing” students were enrolled at both a WTCS and UW institution during the same year. The proportion of WTCS students entering the UWS as transfer students varied by WTCS program type, from 25 percent for technical diploma students to 84 percent for liberal arts students. Appendix E shows enrollment of the overall cohort by entrance status and UW institution.

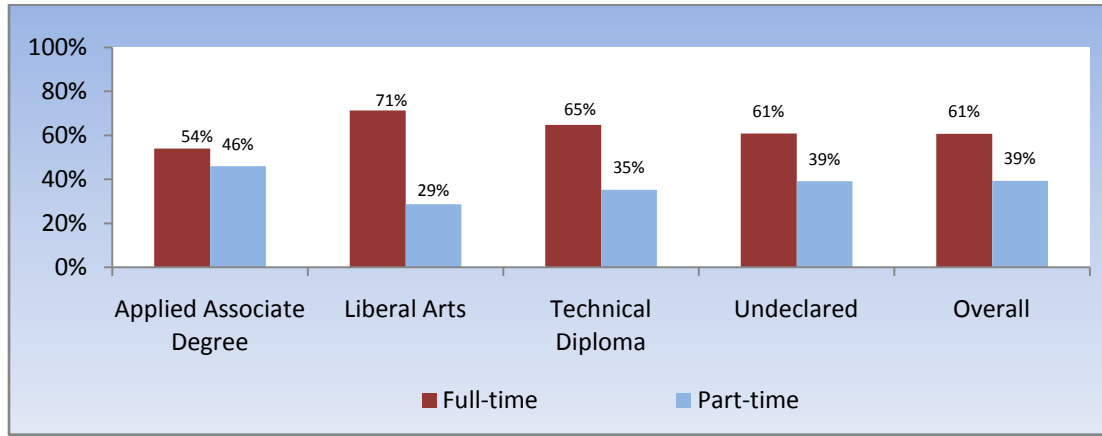
**Figure 5**  
**WTCS/UWS Assessment Cohorts – Overall**  
**by WTCS Program Type and Initial UWS Entrance Status**



**Initial UWS Full-Time/Part-Time Status**

Students who were previously enrolled in WTCS liberal arts programs were more likely to attend the UWS as full-time students (71%). Overall, 61 percent of the WTCS students came to the UWS as full-time students.

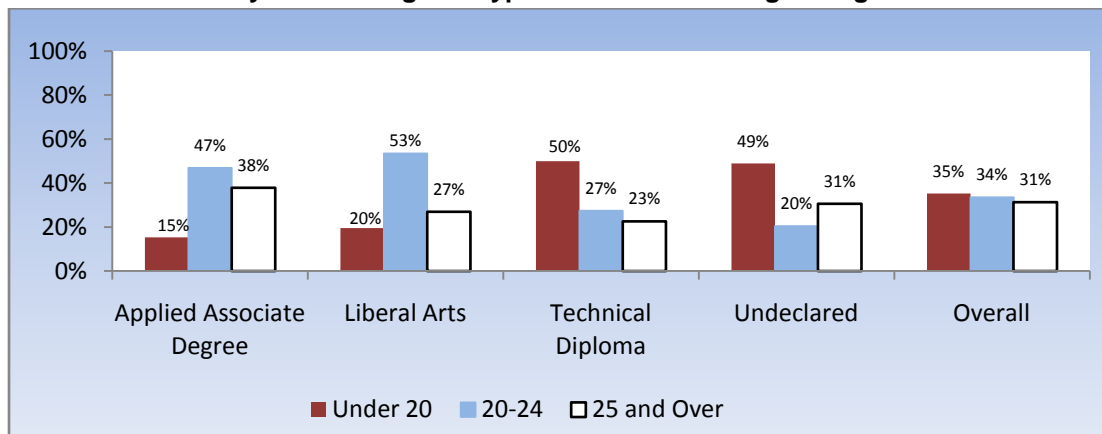
**Figure 6**  
**WTCS/UWS Assessment Cohorts - Overall**  
**by WTCS Program Type and Initial UWS Full-Time/Part-Time Status**



**Initial UWS Age Range**

The age distribution of students who were enrolled in the WTCS and later attended the UWS differed by WTCS program type. About half of the students who were enrolled in liberal arts programs or applied associate degree programs were between 20 and 24 years old. Half of the students enrolled in technical diploma programs and those not enrolled in any specific WTCS program were under 20 years old.

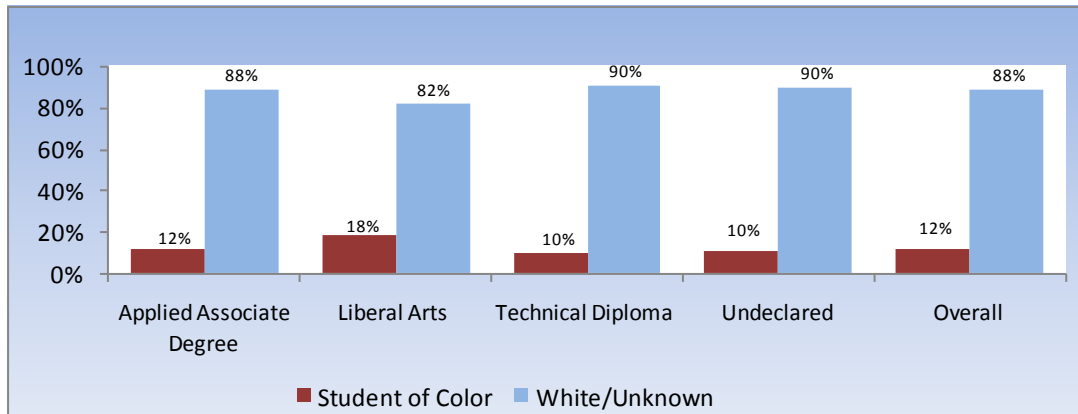
**Figure 7**  
**WTCS/UWS Assessment Cohorts - Overall**  
**by WTCS Program Type and Initial UWS Age Range**



## Student Race/Ethnicity

Overall, 12 percent of the students (6,517) in the cohort were students of color, ranging from 10 percent (662) in technical diploma programs to 18 percent (1,314) in liberal arts programs. This indicates that student transfer from the WTCS, particularly from WTCS liberal arts programs, may increase student diversity at the UWS.

**Figure 8**  
**WTCS/UWS Assessment Cohorts - Overall**  
**by WTCS Program Type and Race/Ethnicity**

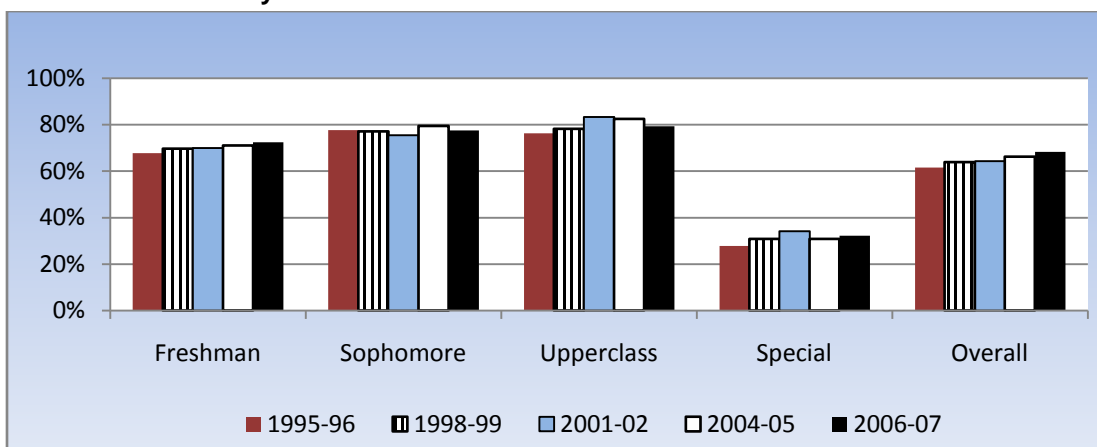


## **STUDENT OUTCOMES**

### Second Year Retention Rate

Students who entered the UWS as sophomores and upperclassmen had similar second year retention rates<sup>4</sup>, higher than those who entered as freshmen (Figure 9). Of the students who initially enrolled in the UWS in 2006-07 as sophomores or as upperclassmen, their second year retention rates were 78 percent and 79 percent, respectively, compared to 72 percent for freshmen. Special students were retained at lower rates, consistent with their differing academic goals. See Appendix F for details.

**Figure 9**  
**Second Year Retention for WTCS/UWS Assessment Cohorts**  
**by Initial UWS Enrollment Year and Classification**



## Six-Year Graduation Rate

The six-year graduation rate for students in the assessment study who enrolled in the UWS between 1995-96 and 2001-02 was 32 percent. See Appendix H for details.

## First Year GPA

The average first year GPA for students in the assessment study who enrolled in the UWS between 1995-96 and 2006-07 was steady at 2.8 on a 4.0 scale. See Appendix I for details.

## LINKING WTCS PROGRAMS TO UWS MAJORS

As a first step toward studying program-to-program activity, WTCS programs and UWS majors were linked using a common classification system (based on CIP discipline areas)<sup>5</sup>. The student's last declared program at the WTCS district and the student's first declared major at the UW institution were linked to their corresponding program/major groups. Table 3 shows the results of this program/major linking. Specifically, the table shows, for a given WTCS program group (leftmost column), the number of students in the overall cohort who enrolled at a UW institution and the types of majors that they entered (reading across the columns). It also shows, the number of students in the cohort who enrolled in a given UWS major group (reading down a column). Lastly, the intersections of WTCS program and UWS major groups show areas where students are enrolling in similar disciplines. For example, 454 students in the cohort had enrolled in Agriculture & Natural Resources programs at the WTCS, 767 students in the cohort enrolled in Agriculture & Natural Resources majors at the UWS, and 97 students were enrolled in an Agriculture & Natural Resources program while at the WTCS and enrolled in a major in the same area when they came to the UWS. The WTCS program group with the largest number of students was Humanities/Liberal Arts with 7,499 students (14% of the overall cohort). The Humanities/Liberal Arts group consists primarily of students enrolled in liberal arts programs at Madison, Milwaukee, and Nicolet Area Technical Colleges (97%).

At many UW institutions, students are not required to declare a major until they reach junior or senior standing. This may partially account for the large number of UWS students with no declared major. Areas of significant program/major intersection included Health Professions to Health Professions with 1,668 students and Business to Business with 1,451 students. These program/major intersections show areas where current WTCS/UWS articulation agreements exist as well as areas where new agreements could be developed.

**Table 3**  
**WTCS/UWS Assessment Cohort - Overall**  
**by WTCS Program and UWS Major Groups**

WTCS Program Group	UWS Major Group														Total
	Ag (01)	Bio (02)	Bus (03)	Com (04)	Ed (05)	Engr (06)	Hlth (07)	H Ec (08)	Hum (09)	Math/ CS (10)	Pub Adm (11)	Soc Sci (12)	Und (14)		
Ag & Natural Resources (01)	97	25	26	6	37	8	5		10	4	6	13	217	454	
Biological/Physical Sci (02)	2	29	8		5	7	5		4	3		4	27	94	
Business (03)	44	108	1,451	241	444	32	157	30	197	93	115	367	2,238	5,517	
Communications/Arts (04)	6	13	59	315	68	15	27	2	39	15	16	51	434	1,060	
Education (05)		2	6	13	230	2	16	7	19	2	17	25	293	632	
Engineering & Architecture (06)	20	37	230	41	100	289	30	1	29	81	10	50	929	1,847	
Health-Related Professions (07)	31	540	267	126	398	26	1,668	42	157	44	226	340	4,490	8,355	
Home Econ/Personal Serv (08)	5	4	64	20	73	1	14	7	17	4	7	15	299	530	
Humanities/Liberal Arts (09)	177	314	813	629	808	264	457	94	440	184	280	772	2,267	7,499	
Math, Computer & Info Sciences (10)	6	36	214	73	63	26	41	2	63	284	27	79	788	1,702	
Public Admin/Legal Services (11)	19	43	149	55	116	11	81	8	98	19	255	227	942	2,023	
Social Science (12)			1		2				1			3	1	8	
Trades/Tech (13)	20	27	125	36	98	69	17	1	23	30	12	37	558	1,053	
Undeclared (14)	340	1,030	2,354	1,279	1,584	640	1,383	105	934	607	632	1,398	12,425	24,711	
<b>Total</b>	<b>767</b>	<b>2,208</b>	<b>5,767</b>	<b>2,834</b>	<b>4,026</b>	<b>1,390</b>	<b>3,901</b>	<b>299</b>	<b>2,031</b>	<b>1,370</b>	<b>1,603</b>	<b>3,381</b>	<b>25,908</b>	<b>55,485</b>	

## PROGRAM-SPECIFIC ENROLLMENTS AND ASSESSMENT

The remaining sections of the report analyze groups of students in the overall cohort who were enrolled in specific programs at the WTCS and then entered specific majors or major groups at a UW institution<sup>6</sup>. These WTCS programs were selected for this year's report for a variety of reasons. The Nursing and Early Childhood Education programs were selected because of multi-campus transfer agreements for these programs. Criminal Justice appeared to be a potential area for future growth. The Information Technology (IT) and Marketing programs were selected because a large number of students in the cohort were enrolled in these programs. Similarly, Accounting, Engineering Technology, and Liberal Arts programs were added in the 2007 report due to a large number of students in the cohort enrolling in these programs. Students in the seven applied associate degree programs represented 57 percent of applied associate degree program students in the assessment cohort.

### Nursing

The 2008 assessment study included 1,577 students who last enrolled in the WTCS Nursing applied associate degree program between 1994-95 and 2006-07 and subsequently enrolled at a UW institution (Table 4). Since 1994-95, the overall trend indicates an increase in the number of WTCS nursing students continuing their education in the UWS. Similar to the trend shown for the overall cohort (Table 1), a large portion of nursing students came to the UWS in the year following their WTCS enrollment. However, for some students, there was a considerable gap between their last WTCS year and initial UWS enrollment year. Of the 124 nursing students who last enrolled in the WTCS in 1995-96, 45 students (36%) enrolled in the UWS in 1996-97, 10 students (8%) were concurrently enrolled, and 69 students (56%) waited at least one year before their UWS enrollment. Refer to Appendix J for enrollment of students in WTCS Nursing applied associate degree programs by WTCS district and UWS institution. Appendix K summarizes WTCS/UWS transfer agreements for WTCS Nursing applied associate degree programs.

**Table 4**  
**WTCS/UWS Assessment Cohorts**  
**WTCS Nursing Applied Associate Degree Students**  
**by Last WTCS and Initial UWS Enrollment Years**

Last WTCS Year	UWS Cohort Year												Total
	95-96	96-97	97-98	98-99	99-00	00-01	01-02	02-03	03-04	04-05	05-06	06-07	
94-95	26	15	13	10	3	8	8	2	3	2	1	5	96
95-96	10	45	14	4	5	16	10	4	6	4	3	3	124
96-97		30	43	9	13	11	8	8	7	5	4	3	141
97-98			13	44	9	13	13	11	4	11	5	4	127
98-99				18	41	22	12	10	3	4	6	3	119
99-00					21	40	19	8	9	6	8	16	127
00-01						13	37	10	11	8	6	6	91
01-02							16	56	22	15	12	11	132
02-03								51	72	18	10	13	164
03-04									29	63	15	17	124
04-05										41	96	26	163
05-06											39	81	120
06-07												49	49
Total	36	90	83	85	92	123	123	160	166	177	205	237	1,577

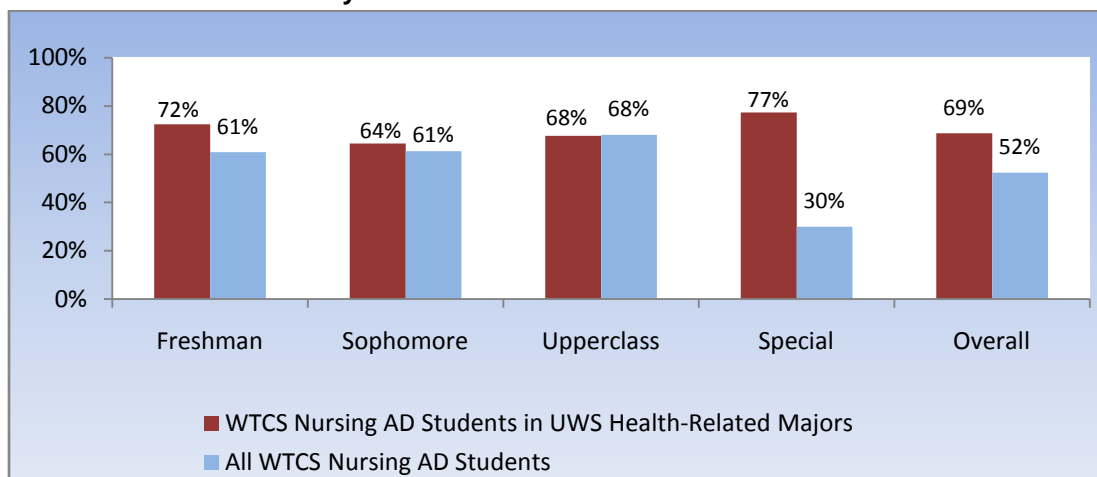
Table 5 shows the type of UWS majors chosen by WTCS nursing students. While the majority of WTCS nursing students in the cohort entered Health-Related Professions, they also pursued majors in Biological/Physical Science and Education areas. Some of the WTCS nursing students in the undeclared group may be seeking a UWS Nursing degree but have not yet been admitted to the UWS Nursing major.

**Table 5**  
**WTCS/UWS Assessment Cohorts**  
**WTCS Nursing Applied Associate Degree Students**  
**by UWS Major Group**

UWS Major Group	# of Students	% of Total	% of Total with Declared Major
Ag & Nat Resources (01)	2	0%	0%
Biological/Physical Sciences (02)	44	3%	6%
Business (03)	25	2%	3%
Communications/Arts (04)	11	1%	1%
Education (05)	44	3%	6%
Engineering & Architecture (06)	2	0%	0%
Health-Related Professions (07)	531	34%	72%
Home Economics/Personal Services (08)	4	0%	1%
Humanities/Liberal Arts (09)	23	1%	3%
Math, Computer & Info Sciences (10)	3	0%	0%
Public Admin/Legal Services (11)	16	1%	2%
Social Sciences (12)	36	2%	5%
<b>Total with Declared Major</b>	<b>741</b>	<b>47%</b>	<b>100%</b>
<b>Undeclared (14)</b>	<b>836</b>	<b>53%</b>	
<b>Total</b>	<b>1,577</b>	<b>100%</b>	

Within the overall assessment cohort, WTCS nursing students who declared a UWS major in Health-Related Professions had a second year retention rate of 69 percent, compared to 52 percent for WTCS nursing students as a group (Figure 10). See Appendix G for details.

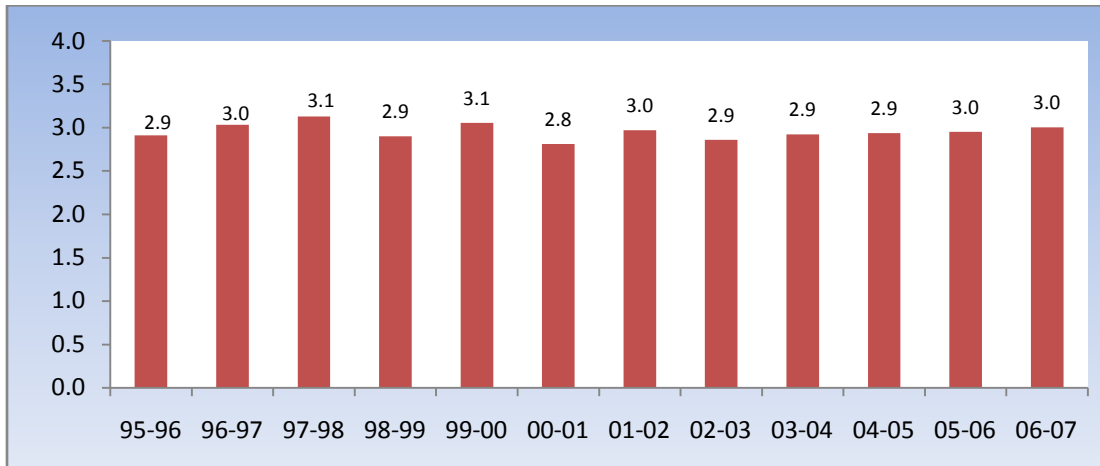
**Figure 10**  
**Second Year Retention for WTCS/UWS Assessment Cohorts**  
**WTCS Nursing Applied Associate Degree Students**  
**by Initial UWS Student Classification**



Within the assessment cohorts who enrolled in the UWS from 1995-96 to 2001-02 as degree-seeking students, WTCS nursing students who declared a UWS major in Health-Related Professions had a six-year graduation rate of 35 percent, compared to 22 percent for WTCS nursing students as a group. See Appendix H for details.

The average first year GPA for WTCS nursing students ranged from 2.8 for students who enrolled in the UWS in 2000-01 to 3.1 for those who enrolled in 1997-98 or 1999-00 (Figure 11). In general, WTCS nursing students had a slightly higher average first year GPA than students in the overall assessment study. See Appendix I for details.

**Figure 11**  
**Average First Year GPA for WTCS/UWS Assessment Cohorts**  
**WTCS Nursing Applied Associate Degree Students**  
**by Initial UWS Enrollment Year**



The program assessment study also looked at WTCS originating programs for UWS Nursing majors. Of the students in the cohort with a Nursing major at the UWS, 29 percent were in WTCS Nursing Assistant programs and 23 percent were in WTCS Nursing applied associate degree programs (Table 6). However, students from Liberal Arts programs and other WTCS programs also pursued UWS Nursing majors. About one third of the UWS nursing students were not enrolled in a specific WTCS program.

**Table 6**  
**WTCS/UWS Assessment Cohorts - Overall**  
**WTCS Source Programs**  
**for UWS Nursing Majors**

WTCS Program/Program Group	# of Students	% of Total	% of Total with Declared Major
Nursing Assistant	648	29%	42%
Nursing Applied Associate Degree	506	23%	33%
Liberal Arts	148	7%	10%
Other Health Programs	109	5%	7%
Other Programs	128	6%	8%
<b>Total with Declared Major</b>	<b>1,539</b>	<b>69%</b>	<b>100%</b>
<b>Undeclared</b>	<b>691</b>	<b>31%</b>	
<b>Total</b>	<b>2,230</b>	<b>100%</b>	

## Early Childhood Education

The 2008 program assessment study included 583 students who were enrolled in WTCS Early Childhood Education applied associate degree programs between 1994-95 and 2006-07 and subsequently enrolled at a UW institution (Table 7). Since 1994-95, the overall trend indicates an increase in the number of WTCS early childhood students continuing their education in the UWS. Similar to the trend shown for the overall cohort (Table 1), a large portion of the early childhood students (54%) came to the UWS in the year following their WTCS enrollment. Refer to Appendix L for enrollment of students in the WTCS Early Childhood Education applied associate degree programs by WTCS district and UWS institution. Appendix M summarizes WTCS/UWS transfer agreements for WTCS Early Childhood Education programs.

**Table 7**  
**WTCS/UWS Assessment Cohorts**  
**WTCS Early Childhood Education Students**  
**by Last WTCS and Initial UWS Enrollment Years**

Last WTCS Year	UWS Cohort Year												Total
	95-96	96-97	97-98	98-99	99-00	00-01	01-02	02-03	03-04	04-05	05-06	06-07	
94-95	8	4	1	2	3		1	1	2	1			23
95-96	1	12	2	2	1	2	1			2	1		24
96-97		2	13	4	4	2			1	1	1	1	29
97-98			4	18	3	3	4	2	2	1	1		38
98-99				9	20	6	5	2	3		1	1	47
99-00					12	22	5	6	3	2	1	3	54
00-01						6	25	4	1	3	2	1	42
01-02							15	23	8	5	1	3	55
02-03								8	35	9	5	3	60
03-04									12	37	8	8	65
04-05										6	32	5	43
05-06											22	65	87
06-07												16	16
<b>Total</b>	<b>9</b>	<b>18</b>	<b>20</b>	<b>35</b>	<b>43</b>	<b>41</b>	<b>56</b>	<b>46</b>	<b>67</b>	<b>67</b>	<b>75</b>	<b>106</b>	<b>583</b>

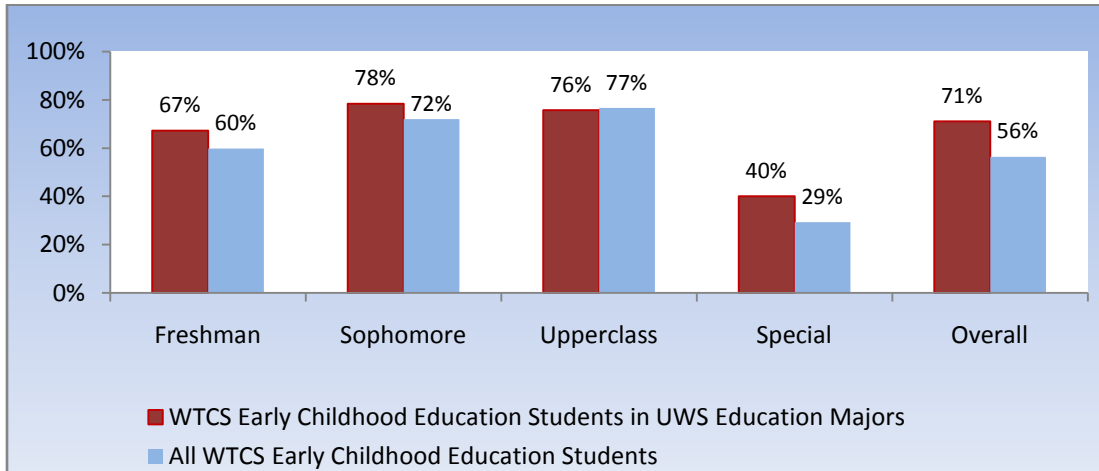
Table 8 shows the type of UWS majors chosen by WTCS early childhood education students. Students in this group predominately entered a UWS major in the Education area. Some of the WTCS early childhood students in the undeclared group may be seeking a UWS Education degree but have not yet been admitted to the UWS Education major.

**Table 8**  
**WTCS/UWS Assessment Cohorts**  
**WTCS Early Childhood Education Students**  
**by UWS Major Group**

UWS Major Group	# of Students	% of Total	% of Total with Declared Major
Biological/Physical Sciences (02)	2	0%	1%
Business (03)	6	1%	2%
Communications/Arts (04)	13	2%	4%
Education (05)	221	38%	68%
Engineering & Architecture (06)	2	0%	1%
Health-Related Professions (07)	14	2%	4%
Home Economics/Personal Services (08)	7	1%	2%
Humanities/Liberal Arts (09)	19	3%	6%
Math, Computer & Info Sciences (10)	1	0%	0%
Public Admin/Legal Services (11)	17	3%	5%
Social Sciences (12)	24	4%	7%
<b>Total with Declared Major</b>	<b>326</b>	<b>56%</b>	<b>100%</b>
<b>Undeclared</b>	<b>257</b>	<b>44%</b>	
<b>Total</b>	<b>583</b>	<b>100%</b>	

WTCS early childhood education students who declared a UWS major in the Education area had an overall second year retention rate of 71 percent (Figure 12). This compares to 56 percent for all WTCS early childhood students in the assessment study. See Appendix G for details.

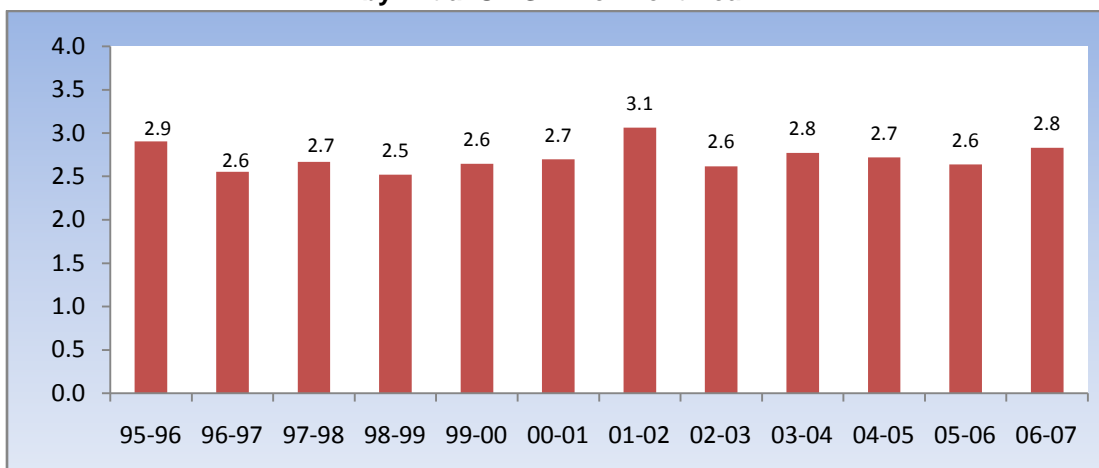
**Figure 12**  
**Second Year Retention for WTCS/UWS Assessment Cohorts**  
**WTCS Early Childhood Education Students**  
**by Initial UWS Student Classification**



Within the assessment cohorts who enrolled in the UWS from 1995-96 to 2001-02 as degree-seeking students, WTCS early childhood students who declared a UWS major in the Education area had a six-year graduation rate of 42 percent, compared to 27 percent for WTCS early childhood students as a group. See Appendix H for details.

The average first year GPA for WTCS early childhood education students varied from 2.5 for students who enrolled in the UWS in 1998-99 to 3.1 for those who enrolled in 2001-02 (Figure 13). Some of the year-to-year variability in the average GPAs may be due to the small early childhood cohort size. See Appendix I for details.

**Figure 13**  
**Average First Year GPA for WTCS/UWS Assessment Cohorts**  
**WTCS Early Childhood Education Students**  
**by Initial UWS Enrollment Year**



Students in the cohort entered UWS Early Childhood/Elementary Education majors from a variety of WTCS programs (Table 9). Seventeen percent (17%) were in WTCS Liberal Arts programs and 10 percent were in the WTCS Early Childhood Education programs. Students in WTCS Business, Nursing Assistant, and other Health programs composed 23 percent of UWS students in Early Childhood/Elementary Education majors in the assessment cohort, while those who were not enrolled in a specific WTCS program made up 40 percent.

**Table 9**  
**WTCS/UWS Assessment Cohorts**  
**WTCS Source Programs**  
**for UWS Early Childhood/Elementary Education Majors**

WTCS Program/Program Group	# of Students	% of Total	% of Total with Declared Major
Liberal Arts	285	17%	28%
Early Childhood Ed	175	10%	17%
Business Programs	169	10%	16%
Nursing Assistant	100	6%	10%
Other Health Programs	123	7%	12%
Other Programs	180	11%	17%
<b>Total with Declared Major</b>	<b>1,032</b>	<b>60%</b>	<b>100%</b>
<b>Undeclared</b>	<b>677</b>	<b>40%</b>	
<b>Total</b>	<b>1,709</b>	<b>100%</b>	

**Information Technology (IT)**

The 2008 program assessment cohort included 1,657 students who were enrolled in WTCS Information Technology (IT) applied associate degree programs between 1994-95 and 2006-07 and subsequently enrolled at a UW institution (Table 10). Since 1994-95, the overall trend indicates an increase in the number of WTCS IT students continuing their education in the UWS. Students in the IT group showed similar patterns as students in other program groups and in the overall cohort as the largest group of students (46%) enrolled in the UWS in the year following their WTCS enrollment. Refer to Appendix N for enrollment of students in WTCS Information Technology (IT) applied associate degree programs by WTCS district and UWS institution. Appendix O summarizes WTCS/UWS transfer agreements for WTCS IT programs.

**Table 10**  
**WTCS/UWS Assessment Cohorts**  
**WTCS Information Technology (IT) Students**  
**by Last WTCS and Initial UWS Enrollment Years**

Last WTCS Year	UWS Cohort Year												Total
	95-96	96-97	97-98	98-99	99-00	00-01	01-02	02-03	03-04	04-05	05-06	06-07	
94-95	24	8	10	4	4	3	4	1	2	2	2		64
95-96	11	38	12	6	7	6	4	4	4	2		2	96
96-97		7	43	13	11	5	9	3	3	2	2	3	101
97-98			15	54	12	9	11	11	4	9	4	3	132
98-99				25	53	21	10	6	12	7	2	3	139
99-00					22	65	25	20	16	8	5	7	168
00-01						37	90	28	15	16	10	10	206
01-02							39	93	27	21	6	4	190
02-03								47	88	23	14	9	181
03-04									28	81	25	17	151
04-05										25	76	18	119
05-06											18	57	75
06-07												35	35
<b>Total</b>	<b>35</b>	<b>53</b>	<b>80</b>	<b>102</b>	<b>109</b>	<b>146</b>	<b>192</b>	<b>213</b>	<b>199</b>	<b>196</b>	<b>164</b>	<b>168</b>	<b>1,657</b>

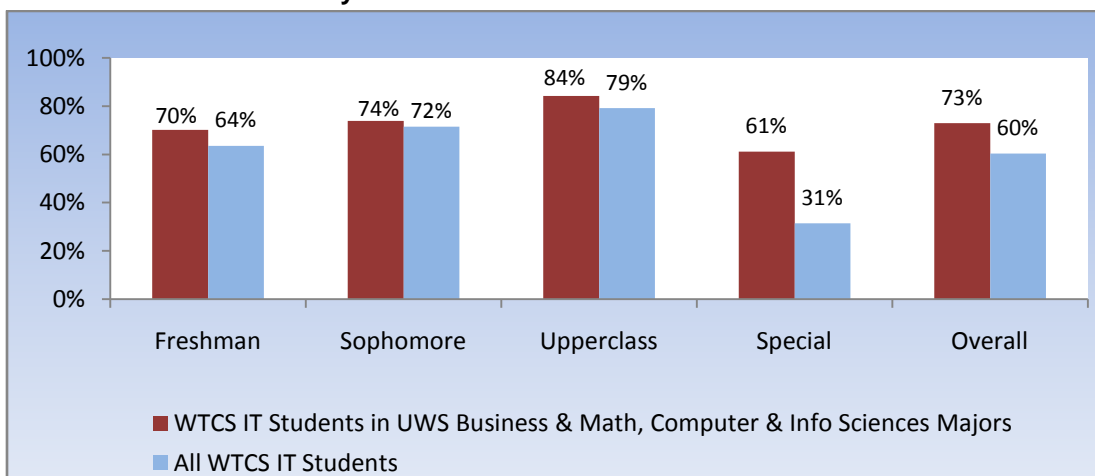
Of the information technology students, 31 percent pursued UWS majors in either the Math, Computer & Information Sciences area or the Business area (Table 11). This illustrates the two different directions that IT students can pursue at a UW institution – either entering majors with a computer/information science focus or majors with a business focus such as Management Information Systems. However, some IT students changed direction and enrolled in majors in Social Sciences, Communications/Arts, Education, and Humanities/Liberal Arts areas.

**Table 11**  
**WTCS/UWS Assessment Cohorts**  
**WTCS Information Technology (IT) Students**  
**by UWS Major Group**

UWS Major Group	# of Students	% of Total	% of Total with Declared Major
Ag & Nat Resources (01)	7	0%	1%
Biological/Physical Sciences (02)	36	2%	4%
Business (03)	212	13%	23%
Communications/Arts (04)	62	4%	7%
Education (05)	60	4%	7%
Engineering & Architecture (06)	26	2%	3%
Health-Related Professions (07)	39	2%	4%
Home Economics/Personal Services (08)	3	0%	0%
Humanities/Liberal Arts (09)	62	4%	7%
Math, Computer & Info Sciences (10)	305	18%	33%
Public Admin/Legal Services (11)	25	2%	3%
Social Sciences (12)	79	5%	9%
<b>Total with Declared Major</b>	<b>916</b>	<b>55%</b>	<b>100%</b>
<b>Undeclared</b>	<b>741</b>	<b>45%</b>	
<b>Total</b>	<b>1,657</b>	<b>100%</b>	

WTCS IT students who declared a UWS major in the Math, Computer & Information Sciences or Business area had an overall second year retention rate of 73 percent (Figure 14). This compares to 60 percent for all WTCS IT students in the assessment study. See Appendix G for details.

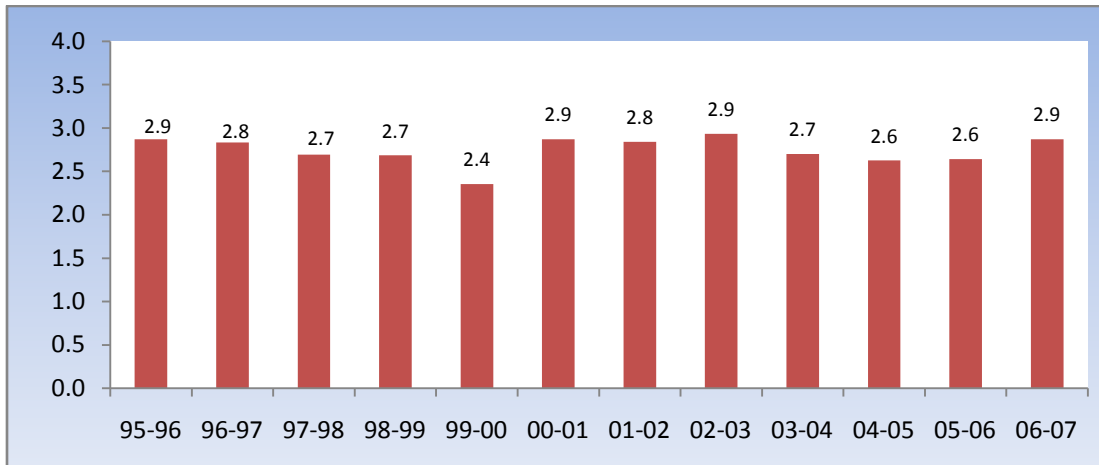
**Figure 14**  
**Second Year Retention for WTCS/UWS Assessment Cohorts**  
**WTCS Information Technology (IT) Students**  
**by Initial UWS Student Classification**



Within the assessment cohorts who enrolled in the UWS from 1995-96 to 2001-02 as degree-seeking students, WTCS IT students who declared a UWS major in the Math, Computer & Information Sciences or Business area had a six-year graduation rate of 37 percent, compared to 21 percent for WTCS IT students as a group. See Appendix H for details.

The average first year GPA for WTCS IT students varied from 2.4 to 2.9 (Figure 15). In general, WTCS IT students had comparable average first year GPAs as students in the overall assessment group. See Appendix I for details.

**Figure 15**  
**Average First Year GPA for WTCS/UWS Assessment Cohorts**  
**WTCS Information Technology (IT) Students**  
**by Initial UWS Enrollment Year**



Students in a variety of WTCS programs later declared a UWS Computer Science/Information Systems major (Table 12). Within the cohort, the largest source was WTCS Information Technology programs (24%), followed by WTCS Liberal Arts programs (13%). Students in WTCS Engineering Technology, Business, and Health programs also pursued UWS Computer Science/Information Systems majors.

**Table 12**  
**WTCS/UWS Assessment Cohorts**  
**WTCS Source Programs**  
**for UWS Computer Science/Information Systems Majors**

WTCS Program/Program Group	# of Students	% of Total	% of Total with Declared Major
Information Technology	290	24%	41%
Liberal Arts	159	13%	23%
Engineering Technology	68	6%	10%
Business Programs	65	5%	9%
Health Programs	36	3%	5%
Other Programs	81	7%	12%
<b>Total with Declared Major</b>	<b>699</b>	<b>57%</b>	<b>100%</b>
<b>Undeclared</b>	<b>527</b>	<b>43%</b>	
<b>Total</b>	<b>1,226</b>	<b>100%</b>	

**Marketing**

The 2008 program assessment cohort included 1,600 students who were enrolled in WTCS Marketing applied associate degree programs between 1994-95 and 2006-07 and subsequently enrolled at a UW institution (Table 13). Since 1994-95, the overall trend indicates a significant increase in the number of WTCS marketing students continuing their education in the UWS. Students in the marketing group showed similar patterns as students in other program groups and in the overall cohort with the majority of students (48%) enrolling in the UWS in the year following their WTCS enrollment. Refer to Appendix P for enrollment of students in WTCS Marketing applied associate degree programs by WTCS district and UW institution. Appendix Q summarizes WTCS/UWS transfer agreements for WTCS Marketing programs.

**Table 13  
WTCS/UWS Assessment Cohorts  
WTCS Marketing Students  
by Last WTCS and Initial UWS Enrollment Years**

Last WTCS Year	UWS Cohort Year												Total
	95-96	96-97	97-98	98-99	99-00	00-01	01-02	02-03	03-04	04-05	05-06	06-07	
94-95	41	17	6	5	5	4	1			1			80
95-96	12	53	13	7	14	4	2	1	2	2	1		111
96-97		26	43	19	11	5	7	3	4		1	2	121
97-98			18	46	13	9	7	4	3	2	2		104
98-99				32	57	13	10	3	2	3	1	1	122
99-00					24	53	19	5	8	6	2	2	119
00-01						30	79	11	7	6	6	3	142
01-02							46	66	22	11	7	8	160
02-03								38	60	16	9	14	137
03-04									46	85	12	9	152
04-05										41	89	20	150
05-06											49	93	142
06-07												60	60
Total	53	96	80	109	124	118	171	131	154	173	179	212	1,600

WTCS marketing students in the cohort pursued two principal types of majors at the UWS (Table 14). A large group of students enrolled in Business majors (27%) while a significant group of students entered UWS Education majors (11%). Of the 169 students in UWS Education majors, about half were in the Business/Marketing Education majors.

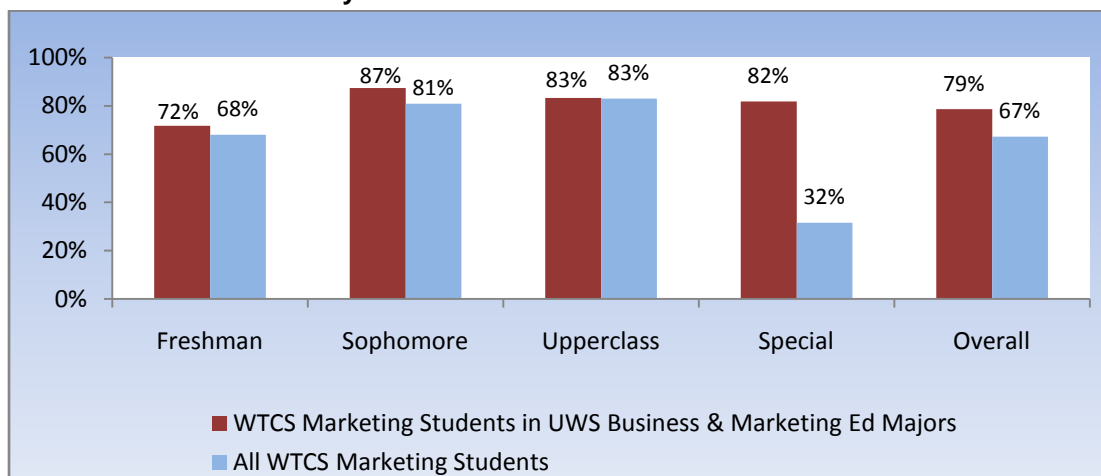
UW-Stout offers a major in Marketing Education and has Marketing-to-Marketing Education transfer agreements with nine WTCS districts. Of the 1,600 WTCS marketing students in the cohort, 312 enrolled at UW-Stout (20%) as shown in Appendix P.

**Table 14**  
**WTCS/UWS Assessment Cohorts**  
**WTCS Marketing Students by UWS Major Group**

UWS Major Group	# of Students	% of Total	% of Total with Declared Major
Ag & Nat Resources (01)	10	1%	1%
Biological/Physical Sciences (02)	27	2%	3%
Business (03)	434	27%	43%
Communications/Arts (04)	89	6%	9%
Education (05)	169	11%	17%
Engineering & Architecture (06)	7	0%	1%
Health-Related Professions (07)	49	3%	5%
Home Economics/Personal Services (08)	7	0%	1%
Humanities/Liberal Arts (09)	66	4%	7%
Math, Computer & Info Sciences (10)	11	1%	1%
Public Admin/Legal Services (11)	29	2%	3%
Social Sciences (12)	103	6%	10%
<b>Total with Declared Major</b>	<b>1,001</b>	<b>63%</b>	<b>100%</b>
<b>Undeclared</b>	<b>599</b>	<b>37%</b>	
<b>Total</b>	<b>1,600</b>	<b>100%</b>	

WTCS marketing students who declared a UWS major in the Business or Marketing Education areas had an overall second year retention rate of 79 percent (Figure 16). This compares to 67 percent for all WTCS marketing students in the assessment study. See Appendix G for details.

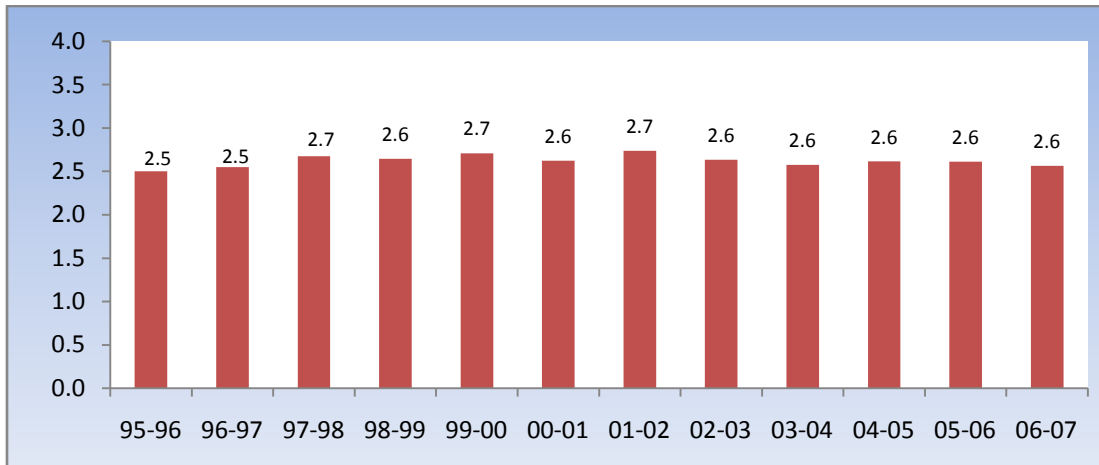
**Figure 16**  
**Second Year Retention for WTCS/UWS Assessment Cohorts**  
**WTCS Marketing Students**  
**by Initial UWS Student Classification**



Within the assessment cohorts who enrolled in the UWS from 1995-96 to 2001-02 as degree-seeking students, WTCS Marketing students who declared a UWS major in the Business or Marketing Education areas had a six-year graduation rate of 50 percent, compared to 30 percent for WTCS marketing students as a group. See Appendix H for details.

The average first year GPA for WTCS marketing students ranged between 2.5 and 2.7 (Figure 17). In general, WTCS marketing students had a slightly lower average first year GPA than students in the overall assessment group. See Appendix I for details.

**Figure 17**  
**Average First Year GPA for WTCS/UWS Assessment Cohorts**  
**WTCS Marketing Students**  
**by Initial UWS Enrollment Year**



Students in a variety of WTCS programs later declared a UWS Business Administration, Management, or Marketing major (Table 15). Within the cohort, WTCS Liberal Arts programs were the largest single source (14%). WTCS marketing students comprised 12 percent of the UWS Business Administration, Management, and Marketing majors in the study.

**Table 15**  
**WTCS/UWS Assessment Cohorts**  
**WTCS Source Programs**  
**for UWS Business Administration/Management/Marketing Majors**

WTCS Program/Program Group	# of Students	% of Total	% of Total with Declared Major
Liberal Arts	455	14%	23%
Marketing	406	12%	21%
Accounting	183	5%	9%
Other Business Programs	345	10%	18%
Health Programs	171	5%	9%
Information Technology	101	3%	5%
Public Admin/Legal Services Programs	94	3%	5%
Other Programs	208	6%	11%
<b>Total with Declared Major</b>	<b>1,963</b>	<b>59%</b>	<b>100%</b>
<b>Undeclared</b>	<b>1,377</b>	<b>41%</b>	
<b>Total</b>	<b>3,340</b>	<b>100%</b>	

## Criminal Justice

WTCS Criminal Justice applied associate degree programs were included in the program assessment study as a potential area for System-to-System articulation. The 2008 assessment cohort included 1,204 students who were enrolled in WTCS Criminal Justice programs between 1994-95 and 2006-07 and subsequently enrolled at a UW institution (Table 16). Refer to Appendix R for enrollment of students in WTCS Criminal Justice applied associate degree programs by WTCS district and UWS institution. Appendix S summarizes WTCS/UWS transfer agreements for WTCS Criminal Justice programs.

**Table 16**  
**WTCS/UWS Assessment Cohorts**  
**WTCS Criminal Justice Students**  
**by Last WTCS and Initial UWS Enrollment Years**

Last WTCS Year	UWS Cohort Year												Total
	95-96	96-97	97-98	98-99	99-00	00-01	01-02	02-03	03-04	04-05	05-06	06-07	
94-95	41	15	12	4	8	2	3	1	4	1	2		93
95-96	13	41	20	5	3	4	5	2	3	1	1	1	99
96-97		13	46	14	7	8	3	6	3	3	2	1	106
97-98			11	43	15	11	6	4	6		1	1	98
98-99				16	56	12	8	7	1	4	5	3	112
99-00					15	36	10	6	5	4	3	2	81
00-01						20	58	8	7	4	3	4	104
01-02							16	50	15	8	6	8	103
02-03								32	57	13	8	4	114
03-04									24	55	13	6	98
04-05										21	70	15	106
05-06											28	43	71
06-07												19	19
Total	54	69	89	82	104	93	109	116	125	114	142	107	1,204

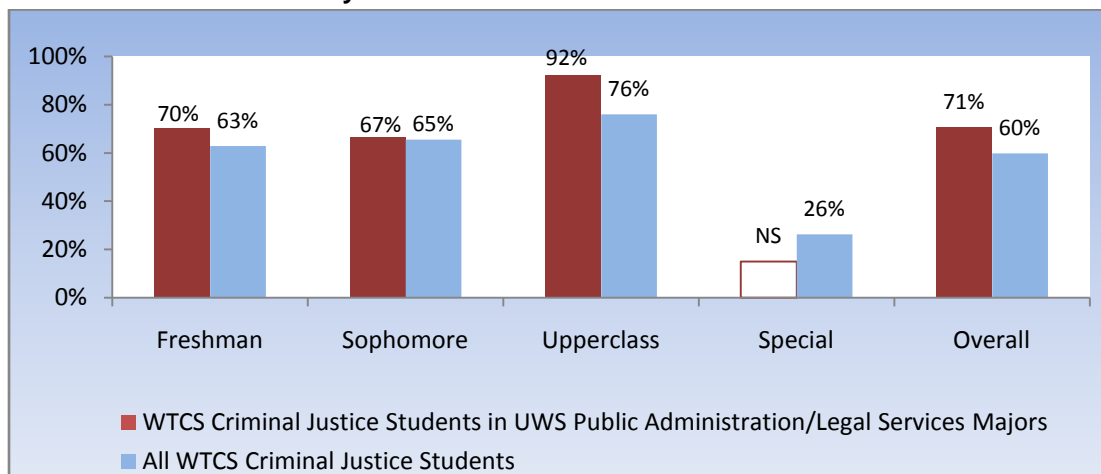
WTCS Criminal Justice students in the cohort pursued two principal types of majors at the UWS (Table 17). One group of students (31% of the students with declared majors) enrolled in majors in the Public Administration/Legal Services area. These students typically majored in Criminal Justice at the UW campus. A second group of criminal justice students (22% of the students with declared majors) enrolled in UWS majors in the Social Sciences area, which includes UWS Social Work majors. In addition, criminal justice students enrolled in a variety of UWS major groups, including Business and Education.

**Table 17**  
**WTCS/UWS Assessment Cohorts**  
**WTCS Criminal Justice Students**  
**by UWS Major Group**

UWS Major Group	# of Students	% of Total	% of Total with Declared Major
Ag & Nat Resources (01)	14	1%	2%
Biological/Physical Sciences (02)	22	2%	3%
Business (03)	85	7%	13%
Communications/Arts (04)	36	3%	5%
Education (05)	60	5%	9%
Engineering & Architecture (06)	6	0%	1%
Health-Related Professions (07)	44	4%	6%
Home Economics/Personal Services (08)	3	0%	0%
Humanities/Liberal Arts (09)	40	3%	6%
Math, Computer & Info Sciences (10)	11	1%	2%
Public Admin/Legal Services (11)	212	18%	31%
Social Sciences (12)	147	12%	22%
<b>Total with Declared Major</b>	<b>680</b>	<b>56%</b>	<b>100%</b>
<b>Undeclared</b>	<b>524</b>	<b>44%</b>	
<b>Total</b>	<b>1,204</b>	<b>100%</b>	

WTCS criminal justice students who declared a UWS major in the Public Administration/Legal Services area had an overall second year retention rate of 71 percent (Figure 18). This compares to 60 percent for all WTCS criminal justice students in the assessment study. See Appendix G for details.

**Figure 18**  
**Second Year Retention for WTCS/UWS Assessment Cohorts**  
**WTCS Criminal Justice Students**  
**by Initial UWS Student Classification**

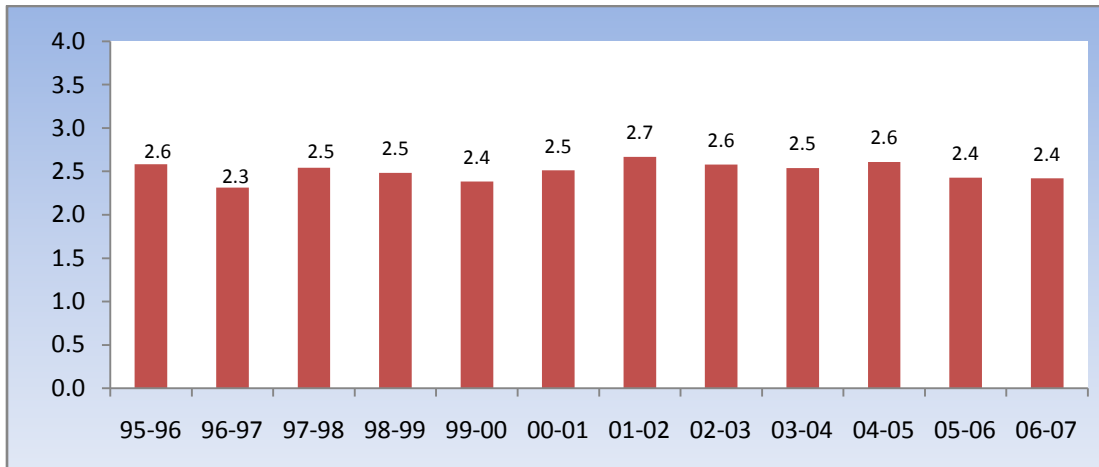


NS – Not shown due to small cohort size.

Within the assessment cohorts who enrolled in the UWS from 1995-96 to 2001-02 as degree-seeking students, WTCS criminal justice students who declared a UWS major in the Public Administration/Legal Services area had a six-year graduation rate of 47 percent, compared to 22 percent for WTCS criminal justice students as a group. See Appendix H for details.

The average first year GPA for WTCS criminal justice students varied from 2.3 for students who enrolled in UWS in 1996-97 to 2.7 for those who enrolled in 2001-02 (Figure 19). In general, WTCS criminal justice students had a lower average first year GPA than students in the overall assessment group. See Appendix I for details.

**Figure 19**  
**Average First Year GPA for WTCS/UWS Assessment Cohorts**  
**WTCS Criminal Justice Students**  
**by Initial UWS Enrollment Year**



A distinct path is shown from WTCS Criminal Justice programs to UWS Criminal Justice majors with 23 percent of the students in the UWS Criminal Justice majors in the assessment cohort coming from WTCS Criminal Justice programs (Table 18). Liberal Arts students were also a source of UWS Criminal Justice majors. Two WTCS program groups, Health and Business, contributed 11 percent to the UWS criminal justice students in the assessment cohort.

**Table 18**  
**WTCS/UWS Assessment Cohorts**  
**WTCS Source Programs**  
**for UWS Criminal Justice Majors**

WTCS Program/Program Group	# of Students	% of Total	% of Total with Declared Major
Police Science/Criminal Justice	184	23%	42%
Liberal Arts	94	12%	22%
Health Programs	50	6%	12%
Business Programs	43	5%	10%
Other Public Admin/Legal Services Programs	24	3%	6%
Other Programs	38	5%	9%
<b>Total with Declared Major</b>	<b>433</b>	<b>55%</b>	<b>100%</b>
<b>Undeclared</b>	<b>355</b>	<b>45%</b>	
<b>Total</b>	<b>788</b>	<b>100%</b>	

## Accounting

The 2008 assessment cohort included 1,054 students who were enrolled in WTCS Accounting applied associate degree programs between 1994-95 and 2006-07 and subsequently enrolled at a UW institution (Table 19). Refer to Appendix T for enrollment of students in WTCS Accounting programs by WTCS district and UWS institution. Appendix U summarizes WTCS/UWS transfer agreements for WTCS Accounting programs.

**Table 19**  
**WTCS/UWS Assessment Cohorts**  
**WTCS Accounting Students**  
**by Last WTCS and Initial UWS Enrollment Years**

Last WTCS Year	UWS Cohort Year												Total
	95-96	96-97	97-98	98-99	99-00	00-01	01-02	02-03	03-04	04-05	05-06	06-07	
94-95	31	15	11	10	6	4	2	5	2	2		1	89
95-96	15	52	12	9	6	8	5	2	2	3	1		115
96-97		14	37	12	7	12	2	4	3	4		3	98
97-98			10	35	15	4		4	1	2		2	73
98-99				10	24	8	9	11	2	3	3	1	71
99-00					17	32	19	3	4	3	7	4	89
00-01						17	36	9	6	8	7		83
01-02							22	40	5	5	1	8	81
02-03								25	43	21	8	1	98
03-04									22	47	9	8	86
04-05										27	54	16	97
05-06											21	41	62
06-07												12	12
<b>Total</b>	46	81	70	76	75	85	95	103	90	125	111	97	1,054

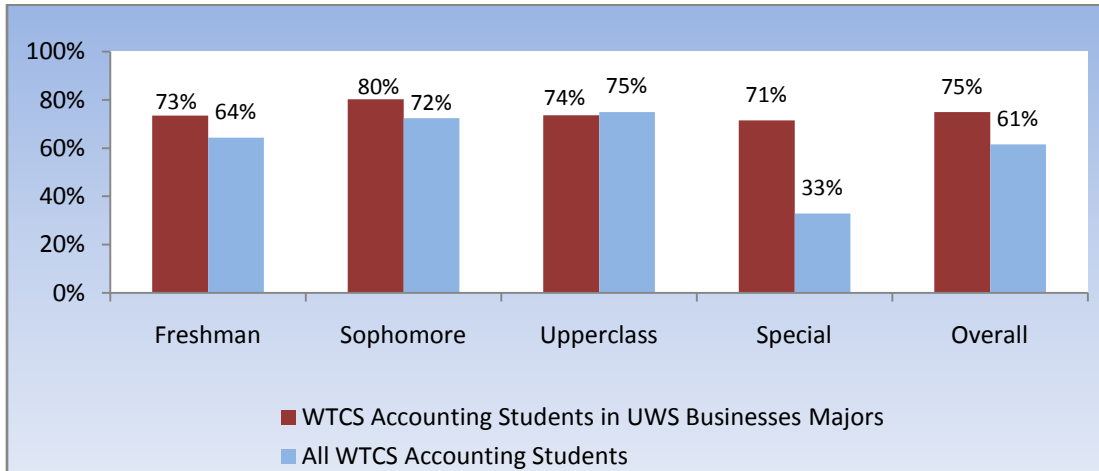
The majority of WTCS Accounting applied associate degree students in the cohort enrolled in the UWS Business area (62% of the students with declared majors). These students typically majored in Accounting at the UWS.

**Table 20**  
**WTCS/UWS Assessment Cohorts**  
**WTCS Accounting Students**  
**by UWS Major Group**

UWS Major Group	# of Students	% of Total	% of Total with Declared Major
Ag & Nat Resources (01)	6	1%	1%
Biological/Physical Sciences (02)	18	2%	3%
Business (03)	378	36%	62%
Communications/Arts (04)	24	2%	4%
Education (05)	54	5%	9%
Engineering & Architecture (06)	3	0%	0%
Health-Related Professions (07)	20	2%	3%
Home Economics/Personal Services (08)	3	0%	0%
Humanities/Liberal Arts (09)	31	3%	5%
Math, Computer & Info Sciences (10)	16	2%	3%
Public Admin/Legal Services (11)	17	2%	3%
Social Sciences (12)	40	4%	7%
<b>Total with Declared Major</b>	<b>610</b>	<b>58%</b>	<b>100%</b>
<b>Undeclared</b>	<b>444</b>	<b>42%</b>	
<b>Total</b>	<b>1,054</b>	<b>100%</b>	

WTCS accounting students who declared a UWS major in the Business area had an overall second year retention rate of 75 percent (Figure 20). This compares to 61 percent for all WTCS accounting students in the assessment study. See Appendix G for details.

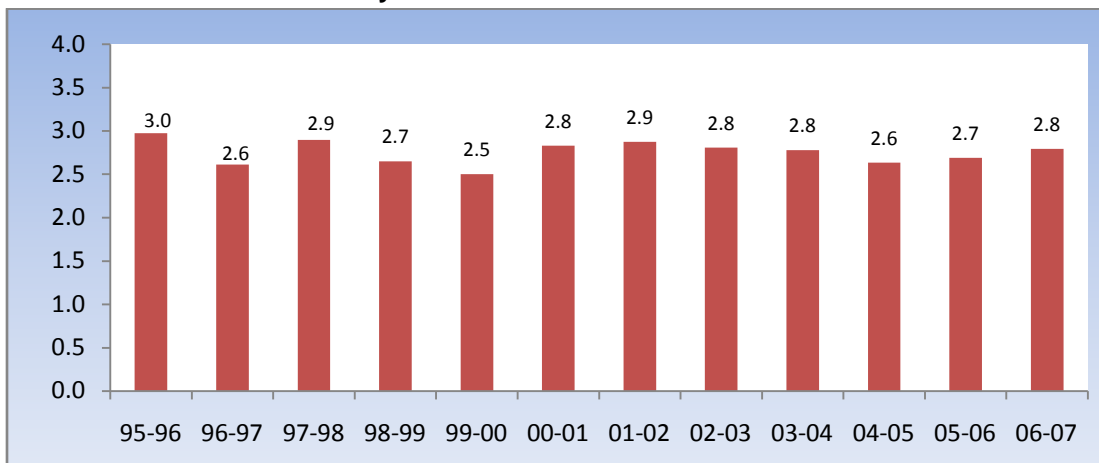
**Figure 20**  
**Second Year Retention for WTCS/UWS Assessment Cohorts**  
**WTCS Accounting Students**  
**by Initial UWS Student Classification**



Within the assessment cohorts who enrolled in the UWS from 1995-96 to 2001-02 as degree-seeking students, WTCS accounting students who declared a UWS major in the Business area had a six-year graduation rate of 39 percent, compared to 22 percent for WTCS accounting students as a group. See Appendix H for details.

The average first year GPA for WTCS accounting students varied from 2.5 for students who enrolled in UWS in 1999-00 to 3.0 for those who enrolled in 1995-96 (Figure 21). See Appendix I for details.

**Figure 21**  
**Average First Year GPA for WTCS/UWS Assessment Cohorts**  
**WTCS Accounting Students**  
**by Initial UWS Enrollment Year**



Students in a variety of WTCS programs later declared a UWS major in the Business area (Table 21). Within the cohort, WTCS Liberal Arts programs were the largest single source (14%). Students in WTCS Business programs, including Accounting, Marketing, and other Business programs, made up 26 percent of the students in UWS Business majors in this study (Table 21).

**Table 21**  
**WTCS/UWS Assessment Cohorts**  
**WTCS Source Programs**  
**for UWS Business Majors**

<b>WTCS Program/Program Group</b>	<b># of Students</b>	<b>% of Total</b>	<b>% of Total with Declared Major</b>
Liberal Arts	801	14%	23%
Marketing	434	8%	13%
Accounting	378	7%	11%
Other Business Programs	639	11%	19%
Health Programs	267	5%	8%
Engineering Technology	230	4%	7%
Information Technology	214	4%	6%
Public Admin/Legal Services Programs	149	3%	4%
Other Programs	301	5%	9%
<b>Total with Declared Major</b>	<b>3,413</b>	<b>59%</b>	<b>100%</b>
<b>Undeclared</b>	<b>2,354</b>	<b>41%</b>	
<b>Total</b>	<b>5,767</b>	<b>100%</b>	

Table 22 shows WTCS source programs for students who declared a UWS Accounting major after they came to the UWS. Twenty-six percent (26%) of UWS accounting students in the cohort were enrolled in WTCS Accounting programs.

**Table 22**  
**WTCS/UWS Assessment Cohorts**  
**WTCS Source Programs**  
**for UWS Accounting Majors**

<b>WTCS Program/Program Group</b>	<b># of Students</b>	<b>% of Total</b>	<b>% of Total with Declared Major</b>
Accounting	148	26%	45%
Liberal Arts	83	14%	25%
Other Business Programs	36	6%	11%
Other Programs	37	6%	11%
Health	28	5%	8%
<b>Total with Declared Major</b>	<b>332</b>	<b>58%</b>	<b>100%</b>
<b>Undeclared</b>	<b>245</b>	<b>42%</b>	
<b>Total</b>	<b>577</b>	<b>100%</b>	

## Engineering Technology

The 2008 assessment cohort included 1,809 students who were enrolled in WTCS Engineering Technology applied associate degree programs between 1994-95 and 2006-07 and subsequently enrolled at a UW institution (Table 23). Refer to Appendix V for enrollment of students in WTCS Engineering Technology programs by WTCS district and UWS institution. Appendix W summarizes WTCS/UWS transfer agreements for WTCS Engineering Technology programs.

**Table 23**  
**WTCS/UWS Assessment Cohorts**  
**WTCS Engineering Technology Students**  
**by Last WTCS and Initial UWS Enrollment Years**

Last WTCS Year	UWS Cohort Year												Total
	95-96	96-97	97-98	98-99	99-00	00-01	01-02	02-03	03-04	04-05	05-06	06-07	
94-95	70	21	13	10	9	4	7	3	4	4	2	1	148
95-96	17	63	23	22	14	8	8	4	2	6	6		173
96-97		21	61	31	23	11	16	9	7	3	4	3	189
97-98			24	71	29	13	14	9	8	9	3	1	181
98-99				25	66	32	18	15	9	8	2	3	178
99-00					26	76	19	14	15	7	2	3	162
00-01						16	56	24	13	11	4	6	130
01-02							28	67	26	15	6	16	158
02-03								25	74	18	9	8	134
03-04									24	80	20	9	133
04-05										22	57	16	95
05-06											31	72	103
06-07												25	25
Total	87	105	121	159	167	160	166	170	182	183	146	163	1,809

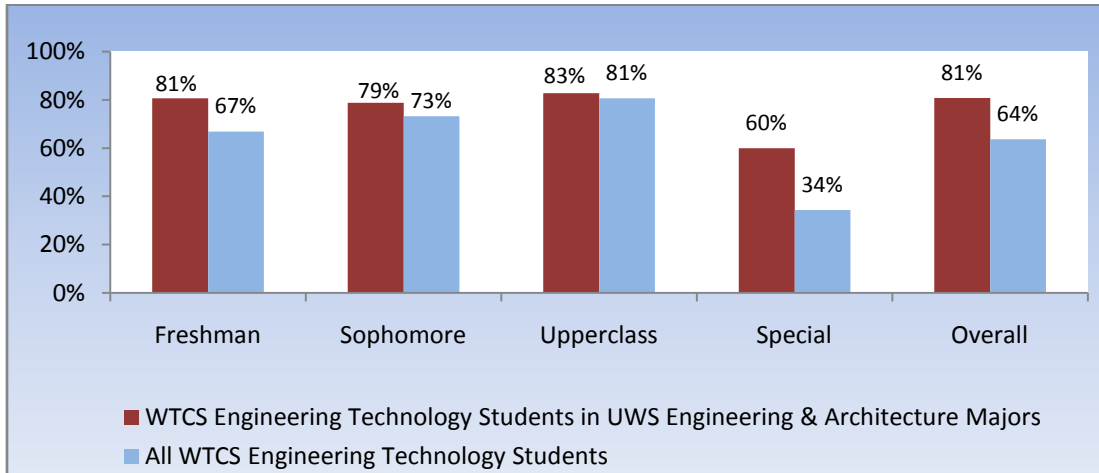
WTCS engineering technology students in the cohort pursued two principal types of majors at the UWS (Table 24). One group of students (31% of the students with declared majors) enrolled in majors in the Engineering & Architecture area. These students were typically enrolled in Engineering/Engineering Technology majors at the UW campus. A second group of the WTCS engineering technology students (25% of the students with declared majors) enrolled in the UWS Business area. In addition, WTCS Engineering Technology students enrolled in a variety of UWS major groups, including Education and Math, Computer & Information Sciences.

**Table 24**  
**WTCS/UWS Assessment Cohorts**  
**WTCS Engineering Technology Students**  
**by UWS Major Group**

UWS Major Group	# of Students	% of Total	% of Total with Declared Major
Ag & Nat Resources (01)	19	1%	2%
Biological/Physical Sciences (02)	37	2%	4%
Business (03)	227	13%	25%
Communications/Arts (04)	38	2%	4%
Education (05)	98	5%	11%
Engineering & Architecture (06)	275	15%	31%
Health-Related Professions (07)	30	2%	3%
Home Economics/Personal Services (08)	1	0%	0%
Humanities/Liberal Arts (09)	28	2%	3%
Math, Computer & Info Sciences (10)	81	4%	9%
Public Admin/Legal Services (11)	10	1%	1%
Social Sciences (12)	49	3%	5%
<b>Total with Declared Major</b>	<b>893</b>	<b>49%</b>	<b>100%</b>
<b>Undeclared</b>	<b>916</b>	<b>51%</b>	
<b>Total</b>	<b>1,809</b>	<b>100%</b>	

WTCS engineering technology students who declared a UWS major in the Engineering & Architecture area had an overall second year retention rate of 81 percent (Figure 22). This compares to 64 percent for all WTCS engineering technology students in the assessment study. See Appendix G for details.

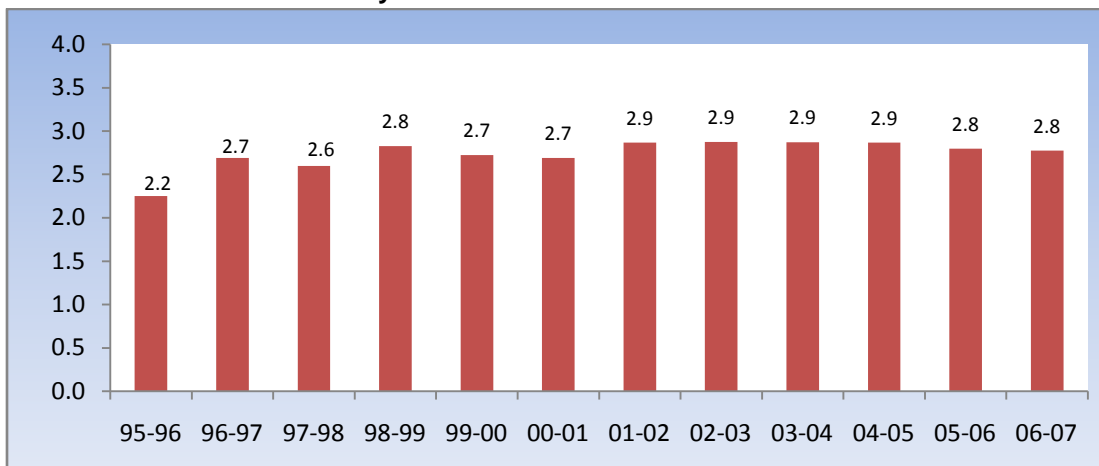
**Figure 22**  
**Second Year Retention for WTCS/UWS Assessment Cohorts**  
**WTCS Engineering Technology Students**  
**by Initial UWS Student Classification**



Within the assessment cohorts who enrolled in the UWS from 1995-96 to 2001-02 as degree-seeking students, WTCS engineering technology students who declared a UWS major in the Engineering & Architecture area had a six-year graduation rate of 45 percent, compared to 22 percent for WTCS engineering technology students as a group. See Appendix H for details.

The average first year GPA for WTCS engineering technology students varied from 2.2 for students who enrolled in UWS in 1995-96 to 2.9 for those who enrolled between 2001-02 and 2004-05 (Figure 23). See Appendix I for details.

**Figure 23**  
**Average First Year GPA for WTCS/UWS Assessment Cohorts**  
**WTCS Engineering Technology Students**  
**by Initial UWS Enrollment Year**



A distinct path is shown from WTCS Engineering Technology programs to UWS Engineering/Engineering Technology majors with 23 percent of the students in UWS Engineering/Engineering Technology in the study coming from WTCS Engineering Technology programs (Table 25). Liberal Arts students (15%) were also a source of UWS Engineering/Engineering Technology majors. Seven percent of UWS engineering/engineering technology students in the cohort were in the WTCS Business and Trades/Technical program groups.

**Table 25**  
**WTCS/UWS Assessment Cohorts**  
**WTCS Source Programs**  
**for UWS Engineering/Engineering Technology Majors**

WTCS Program/Program Group	# of Students	% of Total	% of Total with Declared Major
Engineering Technology	362	23%	39%
Liberal Arts	238	15%	26%
Business Programs	112	7%	12%
Trades/Technical Programs	108	7%	12%
Other Programs	113	7%	12%
<b>Total with Declared Major</b>	<b>933</b>	<b>58%</b>	<b>100%</b>
<b>Undeclared</b>	<b>665</b>	<b>42%</b>	
<b>Total</b>	<b>1,598</b>	<b>100%</b>	

### Liberal Arts

The 2008 assessment cohort included 7,279 students who were enrolled in WTCS Liberal Arts programs between 1994-95 and 2006-07 and subsequently enrolled at a UW institution (Table 26). Refer to Appendix X for enrollment of students in WTCS Liberal Arts programs by WTCS district and UWS institution.

**Table 26**  
**WTCS/UWS Assessment Cohorts**  
**WTCS Liberal Arts Students**  
**by Last WTCS and Initial UWS Enrollment Years**

Last WTCS Year	UWS Cohort Year												Total
	95-96	96-97	97-98	98-99	99-00	00-01	01-02	02-03	03-04	04-05	05-06	06-07	
94-95	420	36	13	15	13	8	4	4	3	3	1	3	523
95-96	197	440	56	20	14	8	5	7	3	6	4	3	763
96-97		188	397	49	15	14	11	11	5	5	1	7	703
97-98			200	401	38	23	19	5	5	4	2	3	700
98-99				170	362	43	23	16	13	1	1	4	633
99-00					147	350	33	19	21	4	6	2	582
00-01						153	350	44	17	12	8	7	591
01-02							192	354	35	23	14	15	633
02-03								145	310	40	22	11	528
03-04									142	277	36	13	468
04-05										146	311	35	492
05-06											140	349	489
06-07												174	174
<b>Total</b>	<b>617</b>	<b>664</b>	<b>666</b>	<b>655</b>	<b>589</b>	<b>599</b>	<b>637</b>	<b>605</b>	<b>554</b>	<b>521</b>	<b>546</b>	<b>626</b>	<b>7,279</b>

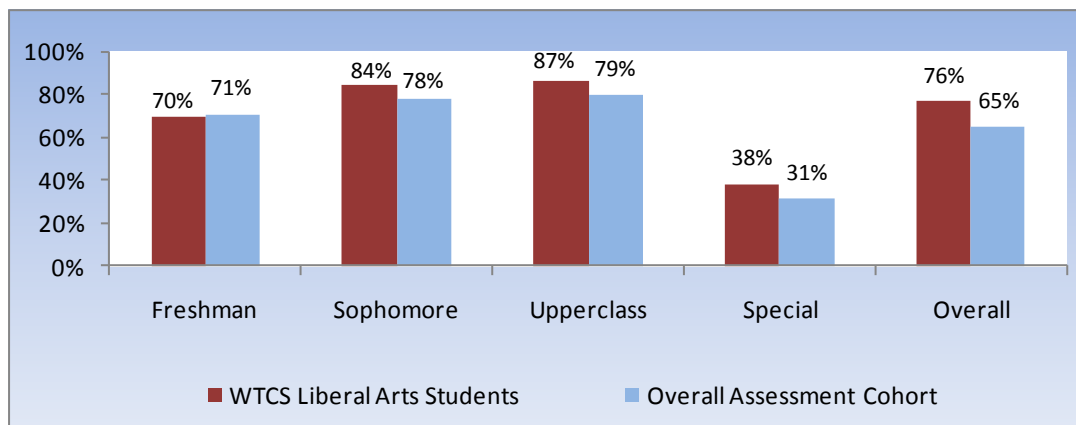
WTCS Liberal Arts students in the cohort pursued a variety of majors at the UWS (Table 27). The top UWS major groups in which students initially enrolled were Business (801), Education (776), Social Sciences (765), and Communications/Arts (621).

**Table 27**  
**WTCS/UWS Assessment Cohorts**  
**WTCS Liberal Arts Students**  
**by UWS Major Group**

UWS Major Group	# of Students	% of Total	% of Total with Declared Major
Ag & Nat Resources (01)	175	2%	3%
Biological/Physical Sciences (02)	313	4%	6%
Business (03)	801	11%	16%
Communications/Arts (04)	621	9%	12%
Education (05)	776	11%	15%
Engineering & Architecture (06)	262	4%	5%
Health-Related Professions (07)	447	6%	9%
Home Economics/Personal Services (08)	94	1%	2%
Humanities/Liberal Arts (09)	422	6%	8%
Math, Computer & Info Sciences (10)	181	2%	4%
Public Admin/Legal Services (11)	276	4%	5%
Social Sciences (12)	765	11%	15%
<b>Total with Declared Major</b>	<b>5,133</b>	<b>71%</b>	<b>100%</b>
<b>Undeclared</b>	<b>2,146</b>	<b>29%</b>	
<b>Total</b>	<b>7,279</b>	<b>100%</b>	

WTCS Liberal Arts students had an overall second year retention rate of 76 percent at the UWS (Figure 24). This compares to 65 percent for all students in the assessment study. See Appendices F and G for details.

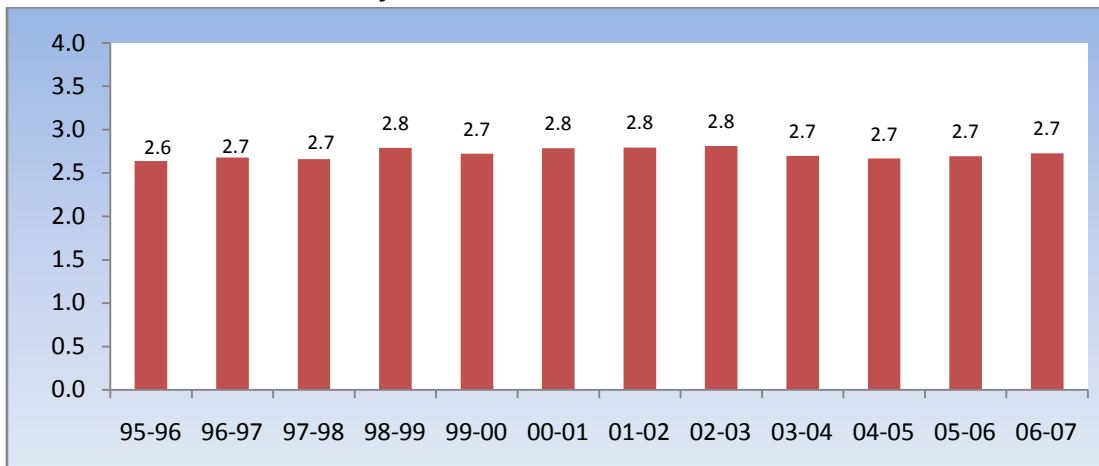
**Figure 24**  
**Second Year Retention for WTCS/UWS Assessment Cohorts**  
**WTCS Liberal Arts Students**  
**by Initial UWS Student Classification**



Within the assessment cohorts, WTCS Liberal Arts students who enrolled in the UWS from 1995-96 to 2001-02 as degree-seeking students had a six-year graduation rate of 47 percent, compared to 32 percent for all degree-seeking students in the cohort who enrolled in the UWS from 1995-96 to 2001-02. See Appendix H for details.

The average first year GPA for WTCS Liberal Arts students varied from 2.6 to 2.8 (Figure 25). In general, WTCS Liberal Arts students had a comparable average first year GPA as students in the overall assessment group. See Appendix I for details.

**Figure 25**  
**Average First Year GPA for WTCS/UWS Assessment Cohorts**  
**WTCS Liberal Arts Students**  
**by Initial UWS Enrollment Year**



## SUMMARY

---

The 2008 WTCS/UWS Program Assessment Study identifies 55,485 students who were enrolled in applied associate degree, liberal arts, or technical diploma courses at a WTCS district in fiscal years 1994-95 through 2006-07 and concurrently or subsequently enrolled at a UW institution. The majority of students initially enrolled at a UW institution in the year directly following their last WTCS year.

Of the students enrolled in a specific WTCS program, students in applied associate degree programs formed the largest group (16,541), followed by students in liberal arts programs (7,279) and students in technical diploma programs (6,954). While the applied associate degree and technical diploma groups increased over the last several years, the number of students, who were enrolled in liberal arts programs offered at Madison, Milwaukee, and Nicolet Area Technical Colleges and then came to the UWS, fluctuated. There has also been a significant increase in students who attended a WTCS district and later a UW institution, but were not enrolled in a specific WTCS program (24,711 or 45% of the cohort).

A growing proportion of students in the assessment cohort entered the UWS as freshmen. The percentage of freshmen in the cohort increased from 49 percent in 1995-96 to 60 percent in 2006-07. The proportion of students entering at the sophomore level decreased from 18 percent in 1995-96 to 13 percent in 2006-07 while the proportion of students entering as upperclassmen (juniors/seniors) fluctuated between 8 percent and 12 percent. However, a much lower proportion of applied associate degree students (40%) and almost no liberal arts students (2%) in the assessment cohort who completed their degree entered the UW as freshmen.

Almost half of students (46%) coming to the UWS after attending a WTCS district entered as transfer students. Almost one third (32%) of students in the cohort were new, degree-seeking students and one sixth (16%) of students initially enrolled as special (non degree-seeking) students. New, degree-seeking students may receive credit for their prior coursework later in their UW enrollment if a transfer credit evaluation is requested. Since students who enroll as specials are not degree-seeking, their prior coursework is usually not evaluated unless they become degree-seeking students.

Students in the assessment cohort who entered the UWS as sophomores or as upperclassmen had similar second year retention rates, 78 percent and 79 percent, respectively; higher than for those who entered as freshmen (71%). The average first year GPA for the overall group was between 2.7 and 2.8 on a 4.0 scale.

The Nursing, Early Childhood Education, Information Technology (IT), Marketing, Criminal Justice, Accounting, and Engineering Technology applied associate degree programs and the Liberal Arts programs were selected for additional analysis. For students in these programs who enrolled in the UWS, UWS enrollment, types of UWS majors that they entered, second year retention rates, six-year graduation rates, and average first year GPA were reported. This information should aid in the evaluation of current program-to-program articulation agreements and future revisions to or expansions of the agreements.

The 2008 WTCS/UWS Program Assessment Study included students who were enrolled at a WTCS district and subsequently enrolled at a UW institution. It identified both the originating WTCS program and the subsequent UWS major in which the students enrolled, and provided academic outcome information for participating students. Transfer for some of these students may have been facilitated by program-to-program articulation agreements. This study should contribute to the broader goal of ensuring that students utilizing these agreements have the requisite knowledge from their WTCS coursework to succeed in their UWS majors. Future reports may expand on this analysis as well as focus on areas for new WTCS/UWS initiatives.

**APPENDICES**

**Appendix A  
WTCS/UWS Assessment Cohorts  
by Initial UWS Enrollment Year and WTCS District UWS Cohort Year**

WTCS District	UWS Cohort Year												Total	
	95-96	96-97	97-98	98-99	99-00	00-01	01-02	02-03	03-04	04-05	05-06	06-07	#	%
Blackhawk	39	67	62	89	96	120	109	126	115	129	132	132	1,216	2%
Chippewa Valley	69	128	141	188	223	254	305	307	341	374	353	386	3,069	6%
Fox Valley	151	183	193	283	360	352	409	479	446	464	450	530	4,300	8%
Gateway	135	124	197	229	249	291	285	354	393	406	388	434	3,485	6%
Lakeshore	60	69	96	101	126	131	158	159	161	182	245	189	1,677	3%
Madison	549	643	622	726	717	854	871	914	866	945	895	935	9,537	17%
Mid-State	66	95	138	142	174	217	248	255	278	260	259	230	2,362	4%
Milwaukee	691	834	914	1,004	1,055	899	924	833	873	942	799	813	10,581	19%
Moraine Park	57	94	131	147	163	185	233	264	279	274	282	291	2,400	4%
Nicolet	88	94	98	108	128	134	145	142	146	117	145	114	1,459	3%
Northcentral	75	105	114	180	196	235	269	276	282	308	296	317	2,653	5%
Northeast	97	152	168	222	249	291	376	338	437	475	559	492	3,856	7%
Southwest	28	50	60	93	62	82	101	90	91	124	161	178	1,120	2%
Waukesha	94	161	170	215	214	214	258	225	283	272	302	323	2,731	5%
Western	73	146	174	214	225	252	222	239	249	270	320	273	2,657	5%
WI Indianhead	56	100	84	119	142	159	256	268	293	302	313	290	2,382	4%
<b>Total</b>	<b>2,328</b>	<b>3,045</b>	<b>3,362</b>	<b>4,060</b>	<b>4,379</b>	<b>4,670</b>	<b>5,169</b>	<b>5,269</b>	<b>5,533</b>	<b>5,844</b>	<b>5,899</b>	<b>5,927</b>	<b>55,485</b>	<b>100%</b>

**Appendix B**  
**WTCS/UWS Assessment Cohorts**  
**by Initial UWS Enrollment Year, WTCS Program Type and Degree Completion Status**

UWS Cohort Year		Applied Associate Degree			Liberal Arts			Technical Diploma			Undeclared	Total		
		Deg.	No Deg.	Total	Deg.	No Deg.	Total	Deg.	No Deg.	Total	No Deg.	Deg.	No Deg.	Total
95-96	#	138	442	580	46	571	617	117	71	188	943	301	2,027	2,328
	%	24%	76%	100%	7%	93%	100%	62%	38%	100%	100%	13%	87%	100%
96-97	#	204	681	885	59	605	664	178	84	262	1,234	441	2,604	3,045
	%	23%	77%	100%	9%	91%	100%	68%	32%	100%	100%	14%	86%	100%
97-98	#	251	702	953	66	600	666	241	121	362	1,381	558	2,804	3,362
	%	26%	74%	100%	10%	90%	100%	67%	33%	100%	100%	17%	83%	100%
98-99	#	310	802	1,112	67	588	655	302	141	443	1,850	679	3,381	4,060
	%	28%	72%	100%	10%	90%	100%	68%	32%	100%	100%	17%	83%	100%
99-00	#	341	934	1,275	63	526	589	318	142	460	2,055	722	3,657	4,379
	%	27%	73%	100%	11%	89%	100%	69%	31%	100%	100%	16%	84%	100%
00-01	#	396	917	1,313	78	521	599	356	180	536	2,222	830	3,840	4,670
	%	30%	70%	100%	13%	87%	100%	66%	34%	100%	100%	18%	82%	100%
01-02	#	443	1,117	1,560	66	571	637	404	193	597	2,375	913	4,256	5,169
	%	28%	72%	100%	10%	90%	100%	68%	32%	100%	100%	18%	82%	100%
02-03	#	461	1,088	1,549	72	533	605	495	191	686	2,429	1,028	4,241	5,269
	%	30%	70%	100%	12%	88%	100%	72%	28%	100%	100%	20%	80%	100%
03-04	#	462	1,251	1,713	65	489	554	502	183	685	2,581	1,029	4,504	5,533
	%	27%	73%	100%	12%	88%	100%	73%	27%	100%	100%	19%	81%	100%
04-05	#	483	1,332	1,815	71	450	521	646	199	845	2,663	1,200	4,644	5,844
	%	27%	73%	100%	14%	86%	100%	76%	24%	100%	100%	21%	79%	100%
05-06	#	519	1,326	1,845	87	459	546	746	221	967	2,541	1,352	4,547	5,899
	%	28%	72%	100%	16%	84%	100%	77%	23%	100%	100%	23%	77%	100%
06-07	#	567	1,374	1,941	101	525	626	701	222	923	2,437	1,369	4,558	5,927
	%	29%	71%	100%	16%	84%	100%	76%	24%	100%	100%	23%	77%	100%
Total	#	4,575	11,966	16,541	841	6,438	7,279	5,006	1,948	6,954	24,711	10,422	45,063	55,485
	%	28%	72%	100%	12%	88%	100%	72%	28%	100%	100%	19%	81%	100%

**Appendix C**  
**WTCS/UWS Assessment Cohorts**  
**by Initial UWS Enrollment Year and Student Classification**

UWS Cohort Year		Student Classification				Overall
		Freshman	Sophomore	Upperclass	Special	
1995-96	#	1,131	417	258	522	2,328
	%	49%	18%	11%	22%	100%
1996-97	#	1,550	476	318	701	3,045
	%	51%	16%	10%	23%	100%
1997-98	#	1,818	476	331	737	3,362
	%	54%	14%	10%	22%	100%
1998-99	#	2,328	529	409	794	4,060
	%	57%	13%	10%	20%	100%
1999-00	#	2,586	545	349	899	4,379
	%	59%	12%	8%	21%	100%
2000-01	#	2,723	549	396	1,002	4,670
	%	58%	12%	8%	21%	100%
2001-02	#	3,071	576	455	1,067	5,169
	%	59%	11%	9%	21%	100%
2002-03	#	3,181	615	431	1,042	5,269
	%	60%	12%	8%	20%	100%
2003-04	#	3,464	645	495	929	5,533
	%	63%	12%	9%	17%	100%
2004-05	#	3,668	697	497	982	5,844
	%	63%	12%	9%	17%	100%
2005-06	#	3,685	755	534	925	5,899
	%	62%	13%	9%	16%	100%
2006-07	#	3,582	796	717	832	5,927
	%	60%	13%	12%	14%	100%
Total	#	32,787	7,076	5,190	10,432	55,485
	%	59%	13%	9%	19%	100%

**Appendix D**  
**WTCS/UWS Assessment Cohorts**  
**by WTCS Program Type, WTCS Degree Completion Status,**  
**and Initial UWS Student Classification**

Program Type		Classification	95-96		98-99		01-02		04-05		06-07		Overall	
			#	%	#	%	#	%	#	%	#	%	#	%
Applied Associate Degree	Degree	Freshman	56	41%	141	45%	178	40%	192	40%	170	30%	1,827	40%
		Sophomore	35	25%	53	17%	71	16%	92	19%	120	21%	868	19%
		Upperclass	27	20%	72	23%	94	21%	109	23%	193	34%	1,055	23%
		Special	20	14%	44	14%	100	23%	90	19%	84	15%	825	18%
		Sub-Total	138	100%	310	100%	443	100%	483	100%	567	100%	4,575	100%
	No Degree	Freshman	289	65%	533	66%	749	67%	850	64%	833	61%	7,718	64%
		Sophomore	37	8%	85	11%	115	10%	172	13%	224	16%	1,423	12%
		Upperclass	15	3%	37	5%	53	5%	85	6%	131	10%	728	6%
		Special	101	23%	147	18%	200	18%	225	17%	186	14%	2,097	18%
		Sub-Total	442	100%	802	100%	1,117	100%	1,332	100%	1,374	100%	11,966	100%
Total			<b>580</b>		<b>1,112</b>		<b>1,560</b>		<b>1,815</b>		<b>1,941</b>		<b>16,541</b>	
Liberal Arts	Degree	Freshman		0%		0%	2	3%		0%	2	2%	13	2%
		Sophomore	1	2%	7	10%	4	6%	6	8%	10	10%	69	8%
		Upperclass	44	96%	57	85%	59	89%	59	83%	87	86%	717	85%
		Special	1	2%	3	4%	1	2%	6	8%	2	2%	42	5%
		Sub-Total	46	100%	67	100%	66	100%	71	100%	101	100%	841	100%
	No Degree	Freshman	187	33%	215	37%	198	35%	135	30%	171	33%	2,183	34%
		Sophomore	243	43%	229	39%	228	40%	184	41%	206	39%	2,650	41%
		Upperclass	94	16%	104	18%	88	15%	80	18%	101	19%	1,009	16%
		Special	47	8%	40	7%	57	10%	51	11%	47	9%	596	9%
		Sub-Total	571	100%	588	100%	571	100%	450	100%	525	100%	6,438	100%
Total			<b>617</b>		<b>655</b>		<b>637</b>		<b>521</b>		<b>626</b>		<b>7,279</b>	

**Appendix E**  
**WTCS/UWS Assessment Cohorts**  
**by Initial UWS Entrance Status and Institution**

UW Institution	Transfer		New Degree-Seeking		New Special		Re-Entry/Continuing		Overall
	#	%	#	%	#	%	#	%	
UW-Madison	2,644	48%	1,517	27%	1,121	20%	251	5%	5,533
UW-Milwaukee	5,665	52%	2,194	20%	2,212	20%	920	8%	10,991
UW-Eau Claire	882	37%	1,087	46%	346	15%	63	3%	2,378
UW-Green Bay	1,289	53%	807	33%	246	10%	106	4%	2,448
UW-La Crosse	1,456	55%	831	31%	307	12%	45	2%	2,639
UW-Oshkosh	1,632	47%	1,425	41%	263	8%	141	4%	3,461
UW-Parkside	1,257	46%	785	29%	512	19%	155	6%	2,709
UW-Platteville	729	35%	824	40%	351	17%	165	8%	2,069
UW-River Falls	298	34%	463	53%	100	11%	18	2%	879
UW-Stevens Point	1,489	53%	783	28%	422	15%	105	4%	2,799
UW-Stout	2,477	67%	749	20%	185	5%	308	8%	3,719
UW-Superior	725	64%	237	21%	92	8%	74	7%	1,128
UW-Whitewater	1,595	56%	940	33%	206	7%	111	4%	2,852
UW Colleges	3,527	30%	5,260	44%	2,586	22%	507	4%	11,880
UW System Total	25,665	46%	17,902	32%	8,949	16%	2,969	5%	55,485

Note:

"Transfers" include (1) new students with transfer work, who had not previously enrolled at the UW institution and (2) re-entry students, who re-enrolled at the UW with transfer work.

"New Degree-Seeking" students were new to the UW campus, initially enrolling with no transfer work.

"New Specials" may have enrolled at the UW with no intent of seeking a degree.

"Re-entry" students re-enrolled at the UW institution with no transfer work; "Continuing" students were enrolled at both a WTCS and UW institution during the same year.

**Appendix F**  
**Second Year Retention for WTCS/UWS Assessment Cohorts**  
**by Initial UWS Enrollment Year and Student Classification**

UWS Cohort Year	Student Classification	# in Cohort	Retained to 2nd Year	
			#	%
1995-96	Freshman	1,131	767	68%
	Sophomore	417	324	78%
	Upperclass	258	197	76%
	Special	522	145	28%
	Total	2,328	1,433	62%
1996-97	Freshman	1,550	1,054	68%
	Sophomore	476	370	78%
	Upperclass	318	258	81%
	Special	701	210	30%
	Total	3,045	1,892	62%
1997-98	Freshman	1,818	1,289	71%
	Sophomore	476	383	80%
	Upperclass	331	269	81%
	Special	737	236	32%
	Total	3,362	2,177	65%
1998-99	Freshman	2,328	1,623	70%
	Sophomore	529	408	77%
	Upperclass	409	320	78%
	Special	794	245	31%
	Total	4,060	2,596	64%
1999-00	Freshman	2,586	1,801	70%
	Sophomore	545	419	77%
	Upperclass	349	262	75%
	Special	899	282	31%
	Total	4,379	2,764	63%
2000-01	Freshman	2,723	1,913	70%
	Sophomore	549	432	79%
	Upperclass	396	311	79%
	Special	1,002	297	30%
	Total	4,670	2,953	63%
2001-02	Freshman	3,071	2,149	70%
	Sophomore	576	435	76%
	Upperclass	455	379	83%
	Special	1,067	365	34%
	Total	5,169	3,328	64%
2002-03	Freshman	3,181	2,285	72%
	Sophomore	615	492	80%
	Upperclass	431	342	79%
	Special	1,042	327	31%
	Total	5,269	3,446	65%
2003-04	Freshman	3,464	2,470	71%
	Sophomore	645	509	79%
	Upperclass	495	389	79%
	Special	929	298	32%
	Total	5,533	3,666	66%
2004-05	Freshman	3,668	2,607	71%
	Sophomore	697	554	79%
	Upperclass	497	410	82%
	Special	982	303	31%
	Total	5,844	3,874	66%
2005-06	Freshman	3,685	2,612	71%
	Sophomore	755	575	76%
	Upperclass	534	420	79%
	Special	925	290	31%
	Total	5,899	3,897	66%
2006-07	Freshman	3,582	2,593	72%
	Sophomore	796	617	78%
	Upperclass	717	569	79%
	Special	832	268	32%
	Total	5,927	4,047	68%

**Appendix G**  
**Second Year Retention for WTCS/UWS Assessment Cohorts**  
**for Specific Program Groups by Initial UWS Student Classification**

WTCS Program Type	Student Classification	# in Cohort	Retained to 2nd Year		# in Cohort	Retained to 2nd Year	
			#	%		#	%
Nursing		All WTCS Nursing AD Students			WTCS Nursing AD Students in UWS Health-Related Majors		
	Freshman	600	365	61%	152	110	72%
	Sophomore	191	117	61%	107	69	64%
	Upperclass	288	196	68%	250	169	68%
	Special	498	149	30%	22	17	77%
	Total	1,577	827	52%	531	365	69%
Early Child Education		All WTCS Early Childhood Education Students			WTCS Early Childhood Education Students in UWS Education Majors		
	Freshman	296	177	60%	104	70	67%
	Sophomore	107	77	72%	74	58	78%
	Upperclass	47	36	77%	37	28	76%
	Special	133	39	29%	10	4	40%
	Total	583	329	56%	225	160	71%
Information Technology (IT)		All WTCS IT Students			WTCS IT Students in UWS Business & Math, Computer & Info Sciences Majors		
	Freshman	1,020	648	64%	319	224	70%
	Sophomore	193	138	72%	92	68	74%
	Upperclass	154	122	79%	89	75	84%
	Special	290	91	31%	18	11	61%
	Total	1,657	999	60%	518	378	73%
Marketing		All WTCS Marketing Students			WTCS Marketing Students in UWS Business & Marketing Ed Majors		
	Freshman	1,022	695	68%	255	183	72%
	Sophomore	235	190	81%	127	111	87%
	Upperclass	159	132	83%	126	105	83%
	Special	184	58	32%	11	9	82%
	Total	1,600	1,075	67%	519	408	79%
Criminal Justice		All WTCS Criminal Justice Students			WTCS Criminal Justice Students in UWS Public Administration/Legal Services Majors		
	Freshman	813	511	63%	132	93	70%
	Sophomore	171	112	65%	63	42	67%
	Upperclass	79	60	76%	13	12	92%
	Special	141	37	26%	4	*	*
	Total	1,204	720	60%	212	150	71%
Accounting		All WTCS Accounting Students			WTCS Accounting Students in UWS Business Majors		
	Freshman	650	418	64%	230	169	73%
	Sophomore	152	110	72%	81	65	80%
	Upperclass	88	66	75%	53	39	74%
	Special	164	54	33%	14	10	71%
	Total	1,054	648	61%	378	283	75%
Engineering Technology		All WTCS Engineering Technology Students			WTCS Engineering Technology Students in UWS Engineering & Architecture Majors		
	Freshman	1,022	683	67%	114	92	81%
	Sophomore	216	158	73%	85	67	79%
	Upperclass	248	200	81%	180	149	83%
	Special	323	111	34%	10	6	60%
	Total	1,809	1,152	64%	389	314	81%
Overall Assessment Cohort/ Liberal Arts		Overall Assessment Cohort			All WTCS Liberal Arts Students		
	Freshman	32,787	23,163	71%	2,196	1,532	70%
	Sophomore	7,076	5,518	78%	2,719	2,292	84%
	Upperclass	5,190	4,126	79%	1,726	1,494	87%
	Special	10,432	3,266	31%	638	244	38%
	Total	55,485	36,073	65%	7,279	5,562	76%

\*To protect student privacy, rates are not shown when there are five or fewer students.

**Appendix H**  
**Six-Year Graduation Rate**  
**for WTCS/UWS Assessment Cohorts\***  
**for Specific Program Groups**

WTCS Program Type		# in Cohort	Graduated in 6 Years	
			#	%
Nursing	All WTCS Nursing AD Students	413	89	22%
	WTCS Nursing AD Students in UWS Health-Related Majors	171	59	35%
Early Childhood Education	All WTCS Early Childhood Education Students	172	46	27%
	WTCS Early Childhood Education Students in UWS Education Majors	74	31	42%
Information Technology (IT)	All WTCS Information Technology (IT) Students	569	119	21%
	WTCS IT Students in UWS Business or Math, Computer & Information Sciences Majors	181	67	37%
Marketing	All WTCS Marketing Students	644	196	30%
	WTCS Marketing Students in UWS Business & Marketing Ed Majors	216	108	50%
Criminal Justice	All WTCS Criminal Justice Students	528	116	22%
	WTCS Criminal Justice Students in UWS Public Administration/Legal Services Majors	77	36	47%
Accounting	All WTCS Accounting Students	455	102	22%
	WTCS Accounting Students in UWS Business Majors	173	67	39%
Engineering Technology	All WTCS Engineering Technology Students	774	174	22%
	WTCS Engineering Technology Students in UWS Engineering & Architecture Majors	160	72	45%
Liberal Arts		4,051	1,910	47%
Overall		21,291	6,865	32%

\*Includes 1995-96 to 2001-02 degree-seeking students only.

**Appendix I**  
**Average First Year GPA for WTCS/UWS Assessment Cohorts**  
**for Specific Program Groups by Initial UWS Enrollment**

WTCS Program Type		95-96	96-97	97-98	98-99	99-00	00-01	01-02	02-03	03-04	04-05	05-06	06-07
Nursing	# in Cohort	36	90	83	85	92	123	123	160	166	177	205	237
	First Year GPA	2.9	3.0	3.1	2.9	3.1	2.8	3.0	2.9	2.9	2.9	3.0	3.0
Early Childhood Education	# in Cohort	9	18	20	35	43	41	56	46	67	67	75	106
	First Year GPA	2.9	2.6	2.7	2.5	2.6	2.7	3.1	2.6	2.8	2.7	2.6	2.8
Information Technology (IT)	# in Cohort	35	53	80	102	109	146	192	213	199	196	164	168
	First Year GPA	2.9	2.8	2.7	2.7	2.4	2.9	2.8	2.9	2.7	2.6	2.6	2.9
Marketing	# in Cohort	53	96	80	109	124	118	171	131	154	173	179	212
	First Year GPA	2.5	2.5	2.7	2.6	2.7	2.6	2.7	2.6	2.6	2.6	2.6	2.6
Criminal Justice	# in Cohort	54	69	89	82	104	93	109	116	125	114	142	107
	First Year GPA	2.6	2.3	2.5	2.5	2.4	2.5	2.7	2.6	2.5	2.6	2.4	2.4
Accounting	# in Cohort	46	81	70	76	75	85	95	103	90	125	111	97
	First Year GPA	3.0	2.6	2.9	2.7	2.5	2.8	2.9	2.8	2.8	2.6	2.7	2.8
Engineering Technology	# in Cohort	87	105	121	159	167	160	166	170	182	183	146	163
	First Year GPA	2.2	2.7	2.6	2.8	2.7	2.7	2.9	2.9	2.9	2.9	2.8	2.8
Liberal Arts	# in Cohort	617	664	666	655	589	599	637	605	554	521	546	626
	First Year GPA	2.6	2.7	2.7	2.8	2.7	2.8	2.8	2.8	2.7	2.7	2.7	2.7
Overall	# in Cohort	2,328	3,045	3,362	4,060	4,379	4,670	5,169	5,269	5,533	5,844	5,899	5,927
	First Year GPA	2.7	2.7	2.8	2.8	2.8	2.8	2.8	2.8	2.8	2.7	2.7	2.8

**Appendix J**  
**WTCS/UWS Assessment Cohorts**  
**Students in WTCS Nursing Applied Associate Degree Programs**  
**Enrollment by WTCS District and UWS Institution**

	MSN	MIL	EAU	GBY	LAC	OSH	PKS	PLT	RVF	STP	STO	SUP	WTW	UWC	TOTAL
Blackhawk	3	5	1	1		1	1	1		1	1		6	42	63
Chippewa Valley			52	1	3				5	3	14	1	1	14	94
Fox Valley	2			34	1	63	1			7				39	147
Gateway	1	38	1	3		3	74	1					4	10	135
Lakeshore	1	6		19		8	1			2				76	113
Madison	51	9		2	1	6							2	16	87
Mid-State	1	1		1		12				25				16	56
Milwaukee	3	140	1	2		4	6						2	15	173
Moraine Park	3	15		2		14		1		2	1			61	99
Nicolet	2	4	6	29	2	2		1		8	2	5	1	8	70
Northcentral	2	3	1	10	1	25		1		19		1		46	109
Northeast WI		2	1	83		5				14				30	135
Southwest WI	3			2				14		2				12	33
Waukesha	1	43			1		3			1	1		4	57	111
Western	2	3	2	1	52	5	1	2		5	2		1	12	88
WI Indianhead	2	1	9	6		2	1		6	2	5	16		14	64
* Overall Total	77	270	74	196	61	150	88	21	11	91	26	23	21	468	1,577
* Major-Specific Total	62	140	39	158	3	124				1	4				531

Note: Shaded areas indicate WTCS/UWS institutions with transfer agreements in nursing.  
\* Overall Total includes all WTCS Nursing Applied Associate Degree students who enrolled in the UWS; Major-Specific Total includes only WTCS Nursing Applied Associate Degree students enrolled in UWS Health-Related majors.

**Appendix K**  
**WTCS/UWS Program-to-Program Transfer Agreements**  
**for WTCS Nursing Applied Associate Degree Programs**

	MSN	MIL	EAU	GBY	LAC	OSH	PKS	PLT	RVF	STP	STO	SUP	WTW	UWC
Blackhawk	N1	N1	N1	N1		N1								
Chippewa Valley	N1	N1	N1	N1		N1								
Fox Valley	N1	N1	N1	N1		N1								
Gateway	N1	N1	N1	N1		N1	N2							
Lakeshore	N1	N1	N1	N1		N1								
Madison	N1	N1	N1	N1		N1								
Mid-State	N1	N1	N1	N1		N1								
Milwaukee	N1	N1	N1	N1		N1								
Moraine Park	N1	N1	N1	N1		N1								
Nicolet	N1	N1	N1	N1		N1								
Northcentral	N1	N1	N1	N1		N1								
Northeast WI	N1	N1	N1	N1		N1								
Southwest WI	N1	N1	N1	N1		N1		N3						
Waukesha	N1	N1	N1	N1		N1								
Western	N1	N1	N1	N1		N1								
WI Indianhead	N1	N1	N1	N1		N1								

N1 = WTCS Nursing Applied Associate Degree to UWS Collaborative Nursing (2001)  
N2 = WTCS Nursing Applied Associate Degree to UW-Parkside and UW-Milwaukee Consortial Nursing Program (2000)  
N3 = WTCS Nursing Applied Associate Degree to UW-Platteville Agriculture (2007)  
Note: In addition to program-to-program agreements, UW institutions may also transfer specific WTCS nursing courses regardless of the student's program or major.

**Appendix L**  
**WTCS/UWS Assessment Cohorts**  
**Students in WTCS Early Childhood Education Programs**  
**Enrollment by WTCS District and UWS Institution**

	MSN	MIL	EAU	GBY	LAC	OSH	PKS	PLT	RVF	STP	STO	SUP	WTW	UWC	TOTAL
Blackhawk	1	2						1			1		17	4	26
Chippewa Valley											3				3
Fox Valley		2		6		40	1			1	12	2		33	97
Gateway		10					22			1			3	1	37
Lakeshore		4				1									5
Madison	15	6	1					6	1		3	1	6	2	41
Mid-State		2				2			1	7	2		1	2	17
Milwaukee		68						1			2	1	2	5	79
Moraine Park		6		1	1	4						3	1	15	31
Nicolet			1			1		1		17	3	20		1	44
Northcentral												1		4	5
Northeast WI		2		3		3							1	1	10
Southwest WI	1	1			2			16				2		2	24
Waukesha		23		1		1		1		1	1		9	22	59
Western			2		25		1		1		5			4	38
WI Indianhead		1	1					2	4		27	27		5	67
* Overall Total	17	127	5	11	28	52	24	28	7	27	59	57	40	101	583
* Major-Specific Total	2	44	3	1	14	34		13	1	7	38	34	30		221

Note: Shaded areas indicate WTCS/UWS institutions with transfer agreements in early childhood education.

\* Overall Total includes all WTCS Early Childhood Education students who enrolled in the UWS; Major-Specific Total includes only WTCS Early Childhood Education students enrolled in UWS Education majors.

**Appendix M**  
**WTCS/UWS Program-to-Program Transfer Agreements**  
**for WTCS Early Childhood Education Program**

	MSN	MIL	EAU	GBY	LAC	OSH	PKS	PLT	RVF	STP	STO	SUP	WTW	UWC
Blackhawk		E1			E3	E4	E5		E7	E8	E9		E10	
Chippewa Valley					E3	E4			E7	E8	E9		E10	
Fox Valley		E1			E3	E4	E5		E7	E8	E9		E10	
Gateway		E1			E3	E4	E5		E7	E8	E9		E10	
Lakeshore		E1			E3	E4	E5		E7	E8	E9		E10	
Madison		E1			E3	E4	E5	E6	E7	E8	E9		E10	
Mid-State		E1			E3	E4	E5		E7	E8	E9		E10	
Milwaukee		E1			E3	E4	E5		E7	E8	E9		E10	
Moraine Park		E1			E3	E4	E5		E7	E8	E9		E10	
Nicolet		E1			E3	E4	E5		E7	E8	E9		E10	
Northcentral		E1			E3	E4	E5		E7	E8	E9		E10	
Northeast WI		E1		E2	E3	E4	E5		E7	E8	E9		E10	
Southwest WI		E1			E3	E4	E5	E6	E7	E8	E9		E10	
Waukesha		E1			E3	E4	E5		E7	E8	E9		E10	
Western		E1			E3	E4	E5		E7	E8	E9		E10	
WI Indianhead		E1			E3	E4	E5		E7	E8	E9		E10	

E1 = WTCS Early Childhood Education to UW-Milwaukee Early Childhood/Community Education (2001)

E2 = WTCS Early Childhood Education to UW-Green Bay Education/Early Childhood or Midchildhood License Program (2005)

E3 = WTCS Early Childhood Education to UW-La Crosse Early-Middle Childhood Education (2007)

E4 = WTCS Early Childhood Education to UW-Oshkosh Education Licensure (Early-Middle Childhood & Early Child/Early Child Spec Ed) (2008)

E5 = WTCS Early Childhood Education to UW-Parkside Early Childhood Education Certification (2001)

E6 = WTCS Early Childhood Education to UW-Platteville Elementary Education/Early Childhood (2000)

E7 = WTCS Early Childhood Education to UW-River Falls Elementary Education (Early Child Minor) (2007)

E8 = WTCS Early Childhood Education to UW-Stevens Point Early Childhood Education (2006)

E9 = WTCS Early Childhood Education to UW-Stout Human Development/Family Studies (2004) & Early Childhood Education (2006)

E10 = WTCS Early Childhood Education to UW-Whitewater Elementary Education (Early-Middle Childhood) & Early Childhood Ed (2007)

Note: In addition to program-to-program agreements, UW institutions may also transfer specific WTCS nursing courses regardless of the student's program or major.

**Appendix N**  
**WTCS/UWS Assessment Cohorts**  
**Students in WTCS Information Technology (IT) Programs**  
**Enrollment by WTCS District and UWS Institution**

	MSN	MIL	EAU	GBY	LAC	OSH	PKS	PLT	RVF	STP	STO	SUP	WTW	UWC	TOTAL
Blackhawk	1							4	1	1			6	31	44
Chippewa Valley		2	46	2	3	1		1	8	1	77	2		6	149
Fox Valley	2	9		7	1	76	2	3		11	6		1	65	183
Gateway	1	11	1				105	4		1	1	1	14	7	146
Lakeshore		3		3	1		1	1			2			45	56
Madison	41	12	3	1	2	6	5	14		6	4	1	22	14	131
Mid-State	1	1	3	3	1	1			1	48			1	16	76
Milwaukee	1	236	2	2	2	2	15	4		1	5		11	22	303
Moraine Park	1	6		1		12		2			6			29	57
Nicolet		1		2	1	3		2		4	1	2	1	2	19
Northcentral		4	5		1	2	1			16	14	1	1	40	85
Northeast WI		1		32		8		2		4	3	1		18	69
Southwest WI					2			24		1	1		2	18	48
Waukesha	3	34		1			4	1		4	3		8	46	104
Western	1	6	2		70			6	1	1	7		1	8	105
WI Indianhead	1	2	3					1	11	2	13	37		12	82
* Overall Total	53	328	65	54	84	111	133	69	22	101	143	47	68	379	1,657
* Major-Specific Total	3	148	19	14	31	38	42	27	11	47	84	18	35		517

Note: Shaded areas indicate WTCS/UWS institutions with transfer agreements in Information Technology (IT).

\* Overall Total includes all WTCS Information Technology (IT) students who enrolled in the UWS; Major-Specific Total includes only WTCS IT students enrolled in UWS Business or Math, Computer & Information Sciences majors.

**Appendix O**  
**WTCS/UWS Program-to Program Transfer Agreements**  
**for WTCS Information Technology (IT) Programs**

	MSN	MIL	EAU	GBY	LAC	OSH	PKS	PLT	RVF	STP	STO	SUP	WTW	UWC
Blackhawk								C4						
Chippewa Valley								C4			C6			
Fox Valley		C1						C4			C6			
Gateway		C1					C3	C4						
Lakeshore														
Madison								C4						
Mid-State								C4						
Milwaukee		C1						C4						
Moraine Park		C1						C4						
Nicolet								C4						
Northcentral								C4			C6			
Northeast WI								C4						
Southwest WI								C4						
Waukesha		C1												
Western					C2			C4			C6			
WI Indianhead									C5					

C1 = WTCS Information Technology (IT) to UW-Milwaukee Information Resources (2004, 2006)

C2 = WTCS Information Technology (IT) to UW-La Crosse Information Systems (2006)

C3 = WTCS Information Technology (IT) to UW-Parkside Business Management (2002)

C4 = WTCS Information Technology (IT) to UW-Platteville Business (1993-2003), Agriculture (2002, 2007) & Computer Info Systems (2003)

C5 = WTCS Information Technology (IT) to UW-River Falls Computer Information Systems & Business (2002)

C6 = WTCS Information Technology (IT) to UW-Stout Computer Information Systems & Information Sciences (2006)

Note: In addition to program-to-program agreements, UW institutions may also transfer specific WTCS information technology courses regardless of the student's program or major.

**Appendix P**  
**WTCS/UWS Assessment Cohorts**  
**Students in WTCS Marketing Programs**  
**Enrollment by WTCS District and UWS Institution**

	MSN	MIL	EAU	GBY	LAC	OSH	PKS	PLT	RVF	STP	STO	SUP	WTW	UWC	TOTAL
Blackhawk		3				2		2			3		7	23	40
Chippewa Valley	1	4	55	1				2	5	2	153	3		9	235
Fox Valley		8	2	4		52	2	5		5	26	1	1	36	142
Gateway		10			2	3	76	2	1	1	6		21	4	126
Lakeshore	1	2		3		4				2	7		1	53	73
Madison	17	14	2	1	4	5	1	15		2	13		19	17	110
Mid-State		1	1			2	1			29	1	1		8	44
Milwaukee	1	67			1	4	8	2		1	4	1	3	8	100
Moraine Park	1	1		1		7		2			3		1	30	46
Nicolet		1	1					1		2		2			7
Northcentral		3		1	1	3	1	1	1	18	27	1		33	90
Northeast WI	1	13	1	83	1	19	2		1	6	17	1		13	158
Southwest WI								13			2			3	18
Waukesha	1	39				6	2		1	1	5		9	55	119
Western		4	1	2	162	2	1	3	1	5	31	2	1	10	225
WI Indianhead		1	1						6	1	14	30	1	13	67
* Overall Total	23	171	64	96	171	109	94	48	16	75	312	42	64	315	1,600
* Major-Specific Total	1	56	12	9	40	38	26	26	3	16	236	18	34		515

Note: Shaded areas indicate UWS/WTCS institutions with transfer agreements in marketing.

\* Overall Total includes all WTCS Marketing students who enrolled in the UWS; Major-Specific Total includes only WTCS Marketing students enrolled in UWS Business or Marketing Education majors.

**Appendix Q**  
**WTCS/UWS Program-to Program Transfer Agreements**  
**for WTCS Marketing Programs**

	MSN	MIL	EAU	GBY	LAC	OSH	PKS	PLT	RVF	STP	STO	SUP	WTW	UWC
Blackhawk								M4					M6	
Chippewa Valley								M4			M5		M6	
Fox Valley								M4			M5		M6	
Gateway							M3	M4			M5		M6	
Lakeshore											M5		M6	
Madison								M4			M5		M6	
Mid-State								M4					M6	
Milwaukee		M1						M4					M6	
Moraine Park								M4			M5		M6	
Nicolet								M4					M6	
Northcentral								M4			M5		M6	
Northeast WI								M4					M6	
Southwest WI								M4					M6	
Waukesha								M4			M5		M6	
Western					M2			M4			M5		M6	
WI Indianhead											M5		M6	

M1 = WTCS Marketing to UW-Milwaukee Information Resources (1999)

M2 = WTCS Marketing to UW-La Crosse Business Administration (2006)

M3 = WTCS Marketing to UW-Parkside Business (2002)

M4 = WTCS Marketing to UW-Platteville Business (1998-2001) & Agriculture (2002, 2007)

M5 = WTCS Marketing to UW-Stout Business (2001-2007) & Marketing (1991-2006)

M6 = WTCS Marketing to UW-Whitewater Business & Economics (1995)

Note: In addition to program-to-program agreements, UW institutions may also transfer specific WTCS marketing courses regardless of the student's program or major.

**Appendix R**  
**WTCS/UWS Assessment Cohorts**  
**Students in WTCS Criminal Justice Programs**  
**Enrollment by WTCS District and UWS Institution**

	MSN	MIL	EAU	GBY	LAC	OSH	PKS	PLT	RVF	STP	STO	SUP	WTW	UWC	TOTAL
Blackhawk	1	2				2	2	3		1			14	33	58
Chippewa Valley			28	1	3	1	1	1	3	1	58	7	1	10	115
Fox Valley	1	5	1	6	1	51	1	4	2	5	1		1	32	111
Gateway	1	13				4	85	3		1	1		10	6	124
Lakeshore		3			1	2		1						17	24
Madison	10	14	2		3	5	2	18		6	2	2	18	15	97
Mid-State		1	1			2		1		18	6			10	39
Milwaukee	1	145			1	4	15	2		3		1	3	8	183
Moraine Park		1				7					1			26	35
Nicolet		2	4	2		4	1	4	1	1		5		4	28
Northcentral	1		1	2	1	4	1	1	1	7				23	42
Northeast WI		8	1	79	1	16	4	3		5				17	134
Southwest WI						1		6						1	8
Waukesha		40			1	2	3		1		1		9	44	101
Western			1	1	33	1	1	7		3	5			2	54
WI Indianhead			2						1		10	23		15	51
* Overall Total	15	234	41	91	45	106	116	54	9	51	85	38	56	263	1,204
* Major-Specific Total	1	81	16	7	1	49	30	21	1			2	3		212

Note: Shaded areas indicate WTCS/UWS institutions with transfer agreements in criminal justice.

Overall Total includes all WTCS Criminal Justice students who enrolled in the UWS; Major-Specific Total includes only WTCS Criminal Justice students enrolled in UWS Public Administration/Legal Services majors.

**Appendix S**  
**WTCS/UWS Program-to-Program Transfer Agreements**  
**for WTCS Criminal Justice Programs**

	MSN	MIL	EAU	GBY	LAC	OSH	PKS	PLT	RVF	STP	STO	SUP	WTW	UWC
Blackhawk						P2		P4		P5				
Chippewa Valley										P5	P6			
Fox Valley						P2		P4		P5				
Gateway							P3	P4		P5			P7	
Lakeshore						P2		P4		P5				
Madison		P1				P2		P4		P5			P7	
Mid-State						P2		P4		P5				
Milwaukee		P1						P4		P5			P7	
Moraine Park						P2				P5				
Nicolet										P5				
Northcentral						P2		P4		P5				
Northeast WI						P2	P3			P5				
Southwest WI						P2				P5				
Waukesha		P1						P4		P5			P7	
Western										P5				
WI Indianhead										P5				

P1 = WTCS Criminal Justice to UW-Milwaukee Criminal Justice (2000, 2003, 2004)

P2 = WTCS Criminal Justice to UW-Oshkosh Human Services (2007)

P3 = WTCS Criminal Justice to UW-Parkside Criminal Justice (2000-2002)

P4 = WTCS Criminal Justice to UW-Platteville Criminal Justice (2006, 2007)

P5 = WTCS Criminal Justice to UW-Stevens Point Environmental Law Enforcement (1995)

P6 = WTCS Criminal Justice to UW-Stout Psychology (2001) & Voc-Rehab (Criminal Justice - Concentration) (2002)

P7 = WTCS Criminal Justice to UW-Whitewater Sociology - Criminal Justice Emphasis (2002, 2005)

Note: In addition to program-to-program agreements, UW institutions may also transfer specific WTCS criminal justice courses regardless of the student's program or major.

**Appendix T**  
**WTCS/UWS Assessment Cohorts**  
**Students in WTCS Accounting Programs**  
**Enrollment by WTCS District and UWS Institution**

	MSN	MIL	EAU	GBY	LAC	OSH	PKS	PLT	RVF	STP	STO	SUP	WTW	UWC	TOTAL
Blackhawk	1	2					1	5		1			7	26	43
Chippewa Valley			42		1			2	9	2	30	1		7	94
Fox Valley		2	1	1	2	26	1	1		5	1	1	1	15	57
Gateway		6			1	1	65	1		1			22	4	101
Lakeshore		1		1		2		1		2	2		1	22	32
Madison	26	6	4	1	4	4	1	21		2	1		26	28	124
Mid-State			1	2	1			3		34	1			9	51
Milwaukee	1	116		2		2	5	2		2	1		4	8	143
Moraine Park		3			1	9		2		1	1		4	27	48
Nicolet		1	1	1		1		2		3		3	1	1	14
Northcentral			1	1	1	1	1	4		8	2	2	1	29	51
Northeast WI	1	3	1	42		3		1	1	4	3		3	30	92
Southwest WI					2			8						4	14
Waukesha		20				1	2	1					6	21	51
Western	1	1	1	1	51	1		5	3	2	5		3	5	79
WI Indianhead								4	14		4	31		7	60
* Overall Total	30	161	52	52	64	51	76	63	27	67	51	38	79	243	1,054
* Major-Specific Total	3	70	26	11	34	21	29	53	13	22	33	16	47		378

Note: Shaded areas indicate WTCS/UWS institutions with transfer agreements in accounting.  
Overall Total includes all WTCS Accounting students who enrolled in the UWS; Major-Specific Total includes only WTCS Accounting students enrolled in UWS Business majors.

**Appendix U**  
**WTCS/UWS Program-to Program Transfer Agreements**  
**for WTCS Accounting Programs**

	MSN	MIL	EAU	GBY	LAC	OSH	PKS	PLT	RVF	STP	STO	SUP	WTW	UWC
Blackhawk								A3						
Chippewa Valley								A3	A4		A5			
Fox Valley								A3						
Gateway							A2	A3						
Lakeshore								A3						
Madison								A3						
Mid-State								A3						
Milwaukee								A3						
Moraine Park								A3						
Nicolet								A3						
Northcentral								A3						
Northeast WI								A3						
Southwest WI								A3						
Waukesha								A3						
Western					A1			A3						
WI Indianhead								A3	A4			A6		

A1 = WTCS Accounting to UW-La Crosse Business (2006)  
A2 = WTCS Accounting to UW-Parkside Business (2002)  
A3 = WTCS Accounting to UW-Platteville Business (1993-2003) & Agriculture (2002, 2007)  
A4 = WTCS Accounting to UW-River Falls Business (1995, 2002) & Computer Information System (2002)  
A5 = WTCS Accounting to UW-Stout Business & Marketing (2001)  
A6 = WTCS Accounting to UW-Superior Business (1997)

Note: In addition to program-to-program agreements, UW institutions may also transfer specific WTCS accounting courses regardless of the student's program or major.

**Appendix V**  
**WTCS/UWS Assessment Cohorts**  
**Students in WTCS Engineering Technology Programs**  
**Enrollment by WTCS District and UWS Institution**

	MSN	MIL	EAU	GBY	LAC	OSH	PKS	PLT	RVF	STP	STO	SUP	WTW	UWC	TOTAL
Blackhawk		1			1	1		2			4		5	26	40
Chippewa Valley		2	38	1	2			2	3		89			2	139
Fox Valley		5	1	6	2	27	1	6		5	37	1		78	169
Gateway		15			1		61	1	1		6		9	8	102
Lakeshore	1	3	3	1		3		1			10			44	66
Madison	32	25	4	2	5	3	1	16	1	2	14	2	10	27	144
Mid-State	1	5			2	4	1	4	2	31	5			20	75
Milwaukee	6	191	1	1	2	6	12	3		3	16	2	3	24	270
Moraine Park	3	15	1	1	1	14	2	9	1	1	16			80	144
Nicolet				1	1										2
Northcentral	1	6	3		2	5	2	1	2	22	46	1		77	168
Northeast WI	2	12		38		11		3		8	20		1	35	130
Southwest WI	2				1			20			2		1	10	36
Waukesha	2	80	1	1		4	2	4		1	14		5	69	183
Western	1	5	1		39			7		1	12		1	7	74
WI Indianhead		3	3				1	1	8		30	8		13	67
* Overall Total	51	368	56	52	59	78	83	80	18	74	321	14	35	520	1,809
* Major-Specific Total	8	128					1	28			110				275

Note: Shaded areas indicate WTCS/UWS institutions with transfer agreements in engineering/engineering technology.  
Overall Total includes all WTCS Engineering Technology students who enrolled in the UWS; Major-Specific Total includes only WTCS Engineering Technology students enrolled in UWS Engineering & Architecture majors.

**Appendix W**  
**WTCS/UWS Program-to Program Transfer Agreements**  
**for WTCS Engineering Technology Programs**

	MSN	MIL	EAU	GBY	LAC	OSH	PKS	PLT	RVF	STP	STO	SUP	WTW	UWC
Blackhawk								T3						
Chippewa Valley								T3			T4			
Fox Valley								T3						
Gateway								T3			T4			
Lakeshore								T3						
Madison								T3			T4			
Mid-State								T3						
Milwaukee								T3						
Moraine Park								T3						
Nicolet								T3						
Northcentral								T3			T4			
Northeast WI								T3			T4			
Southwest WI								T3						
Waukesha		T1						T3						
Western					T2			T3						
WI Indianhead								T3						

T1 = WTCS Industrial Occupations to UW-Milwaukee Engineering & Computer Science (2001)  
T2 = WTCS Engineering Technology to UW-La Crosse Computer Science - Electrical Engineering Concentration (2005)  
T3 = WTCS Electronic Technology/Mechanical Design/Engineering Technology to UW-Platteville Industrial Technology (1998-2003) & Engineering (1998)  
T4 = WTCS Technical Studies/Mechanical Design/Manufacturing Engineering/Technical Communication/Engineering Technology to UW-Stout Engineering & Technology (2001-2008), Construction (2006) & Technical Communication (2007)  
Note: In addition to program-to-program agreements, UW institutions may also transfer specific WTCS engineering technology courses regardless of the student's program or major.

**Appendix X**  
**WTCS/UWS Assessment Cohorts**  
**Students in WTCS Liberal Arts Program**  
**Enrollment by WTCS District and UWS Institution**

	MSN	MIL	EAU	GBY	LAC	OSH	PKS	PLT	RVF	STP	STO	SUP	WTW	UWC	TOTAL
<b>Madison</b>	1,954	404	124	41	168	146	25	192	26	173	84	17	626	257	4,237
<b>Milwaukee</b>	41	1,838	10	14	28	60	111	19	4	35	28	5	109	143	2,445
<b>Nicolet</b>	35	34	39	33	29	50	4	14	14	170	65	45	16	49	597
<b>Overall Total</b>	2,030	2,276	173	88	225	256	140	225	44	378	177	67	751	449	7,279

## END NOTES

<sup>1</sup> Under current WTCS/UWS transfer policy, courses from WTCS applied associate degree programs may be accepted by UW System institutions in two ways: (1) A maximum of 30 credits from approved general education courses in social science, behavioral science, communications, mathematics, and natural science may transfer; and (2) WTCS students in applied associate degree programs may transfer additional coursework where WTCS/UWS program-to-program articulation agreements exist or the coursework may transfer on a course-to-course basis.

<sup>2</sup> The agreement allowed for the exchange of student and other records necessary for the evaluation of student transfers from the WTCS to the UWS. The data exchange set a model for cooperation between the Systems and was key to the joint study. To date, the WTCS has provided the UWS with records for students who were enrolled in applied associate degree, liberal arts, and/or technical diploma courses at WTCS districts in fiscal years 1994-95 through 2006-07. The data included demographic, program, and course records for each student. The WTCS data was matched to the UWS enrollment database to track the students through their UWS experience.

<sup>3</sup> The WTCS/UWS Assessment Cohort included WTCS students who enrolled in FTE-generating courses at the applied associate degree, liberal arts or technical diploma level in fiscal years 1994-95 through 2006-07. It excluded students who enrolled in WTCS courses as part of their high school curriculum ("high school specials"). Within the UWS, the cohort included only students who enrolled at the undergraduate level, excluding high school specials. Students were also excluded from the study if they attended a UW campus first and later enrolled at a WTCS district, and if this UWS enrollment was in the 1989-90 academic year or later.

<sup>4</sup> Students were grouped into an academic year cohort based on their initial UWS enrollment year, combining summer, fall, winter, and spring term enrollees. They were counted as retained to a second year if they enrolled in any term in the following year or received a bachelor's degree in either their first or second enrollment year.

<sup>5</sup> Classification of Instructional Programs (CIP) is the U.S. Department of Education's standard educational program classification system. Postsecondary institutions assign each of their programs to a CIP code for federal reporting purposes. The first two digits of the six digit CIP code designate a discipline area. For this report CIP discipline areas were combined into program groups as follows:

Group	Program/Major Group Title	CIP Areas in Group
1	Ag & Nat Resources	01 - Agriculture, Agriculture Operations, and Related Sciences
		03 - Natural Resources and Conservation
2	Biological/Physical Sciences	26 - Biological and Biomedical Sciences
		40 - Physical Sciences
		41 - Science Technologies/Technicians
3	Business	52 - Business, Management, Marketing, and Related Support Services
4	Communications/Arts	09 - Communications, Journalism, and Related Programs
		10 - Communications Technologies/Technicians and Support Services
		50 - Visual and Performing Arts
5	Education	13 - Education
6	Engineering & Architecture	14 - Engineering
		15 - Engineering Technologies/Technicians
		04 - Architecture and Related Services
7	Health-Related Professions	51 - Health Professions and Related Clinical Sciences
		31 - Parks, Recreation, Leisure and Fitness Studies
8	Home Economics/Personal Services	19 - Family and Consumer Sciences/Human Sciences
		12 - Personal & Culinary Services
9	Humanities/Liberal Arts	05 - Area, Ethnic, Cultural and Gender Studies
		16 - Foreign Languages, Literatures, and Linguistics
		23 - English Language and Literature/Letters
		24 - Liberal Arts and Sciences, General Studies, and Humanities
		30 - Multi/Interdisciplinary Studies
		38 - Philosophy and Religious Studies
10	Math, Computer & Info Sciences	39 - Theology and Religious Vocations
		11 - Computer and Information Sciences and Support Services
		25 - Library Science
		27 - Mathematics and Statistics

Group	Program/Major Group Title	CIP Areas in Group
11	Public Admin/Legal Services	22 - Legal Professions and Studies 43 - Security and Protective Services 44 - Public Administration and Social Service Professions 49 - Transportation and Materials Moving 29 - Military Technologies
12	Social Sciences	42 - Psychology 45 - Social Sciences 54 - History
13	Trades/Technical	46 - Construction Trades 47 - Mechanic and Repair Technologies/Technicians 48 - Precision Production Trades

<sup>6</sup> The table below lists: (1) WTCS programs and their associated program codes; (2) UWS majors and their associated major codes; and (3) UWS majors and CIP groups that were used for program-specific section of the report and retention/graduation in related UWS majors. See the definition for CIP - Classification of Instructional Programs in End Note 5.

WTCS Program	WTCS Program or CIP Code	UWS Major	UWS Major or CIP Code	UWS Major and CIP Group
Early Childhood Education	103071	Elementary Education	8021	CIP 05 8021/8231
		Early Childhood Education	8231	
Information Technology (IT)	101070 through 101079 102012 & 102065 101521 through 101529 101501 through 101504 101541 through 101548 101352 through 101353	Computer Science/Information Systems	7011 7021 through 7024 7031 7071 7081	CIP 03/10 7011/7031/7071/7081 7021 through 7024
Marketing	101043 101046 101048 101111	Marketing	5091 8381	CIP 03 5091/8381 5011/5061/5062/5069
		Business Administration/Management	5011 5061-5062 5069	
Nursing	105101 & 105431	Nursing	12031 12032	CIP 07 12031/12032
Criminal Justice	105041 105042	Criminal Justice	21051	CIP 11 21051
Engineering Technology	All Applied Associate Degree Program Codes under CIP 14 & 15	Engineering/Engineering Technology	All Major Codes under CIP 14 & 15 9250 9601	CIP 06 9250/9601
Accounting	101011	Accounting	05021	CIP 03
		Business	All Major Codes under CIP 52	
Liberal Arts	208001 & 208002			