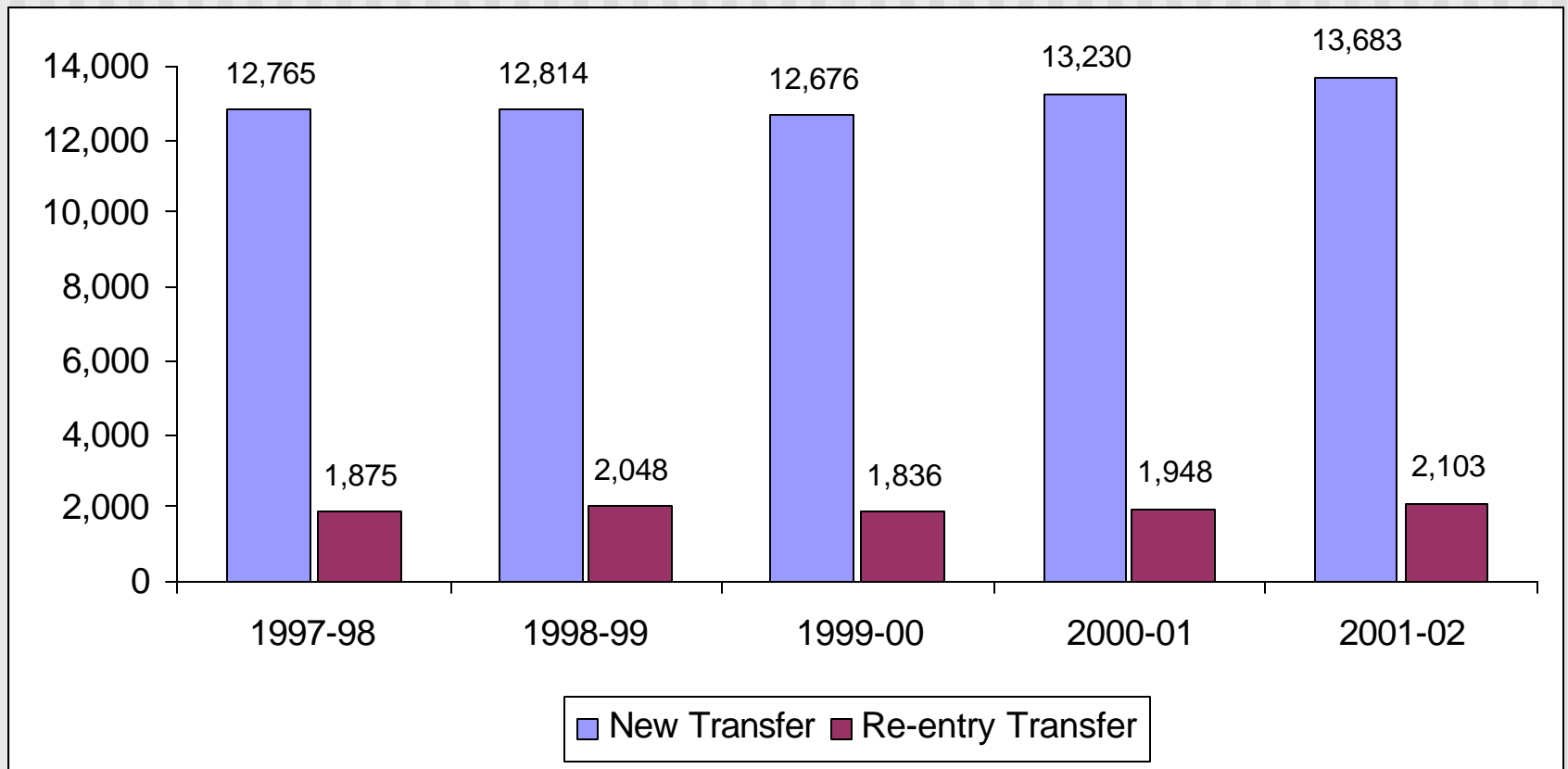


WTCS Transfers to the University of Wisconsin System

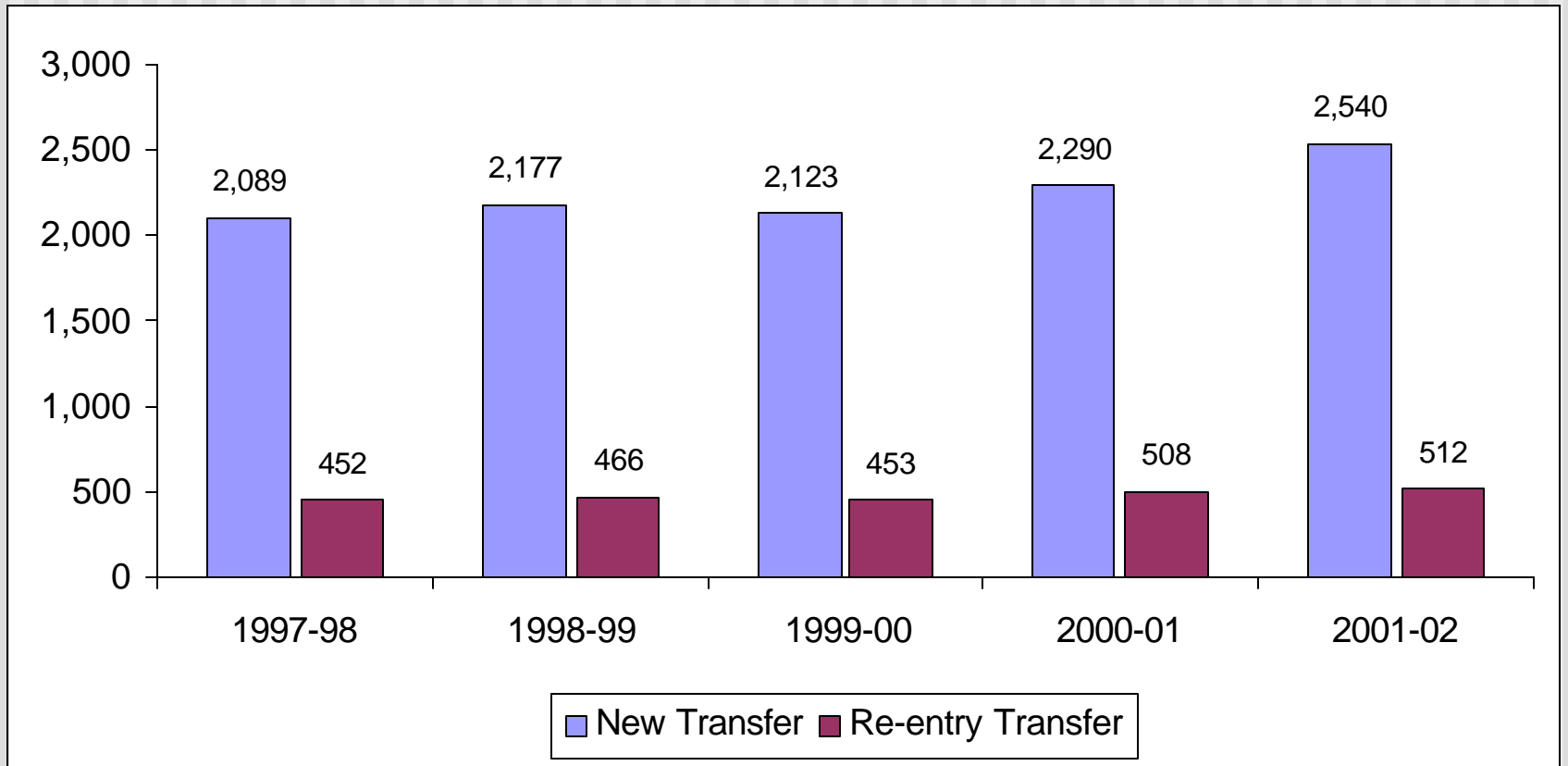
University of Wisconsin System
Office of Policy Analysis
and Research

October 24, 2002

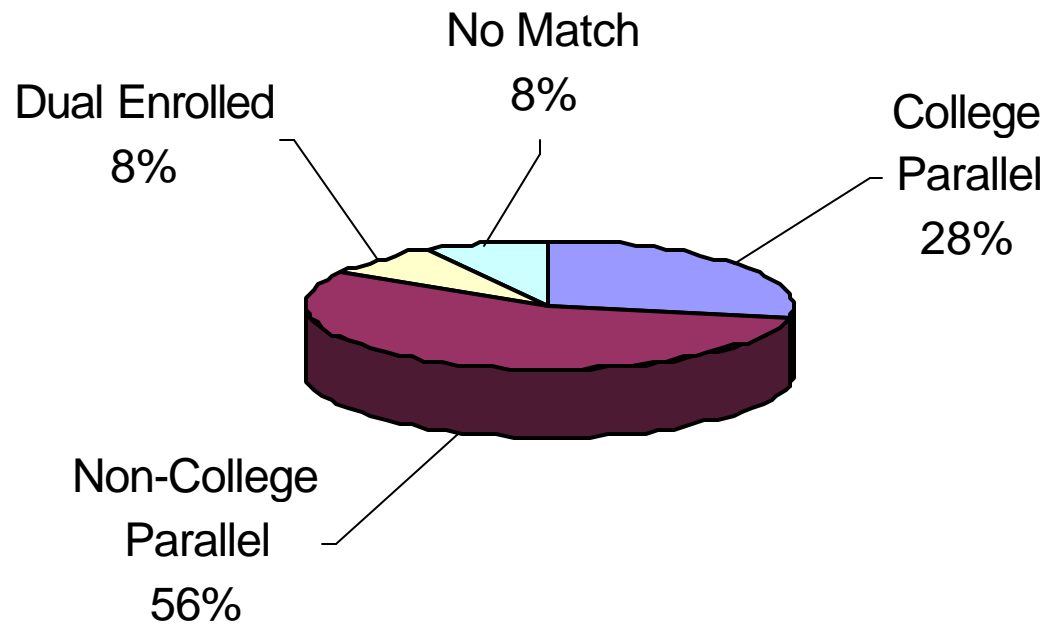
Overall UWS Transfer Trends



WTCS to UWS Transfer Trends



UWS New Transfer Students: WTCS Enrollment Type



UWS New Transfer Students: Graduation Rates

- Combined (5th yr graduation plus 6th yr retention) rates for freshman transfers range from 36% (WTCS transfers) to 60% (UW Colleges transfers).
- Combined rates for sophomore transfers range from 55% (WI private transfers) to 71% (UW Colleges transfers). The combined rate for WTCS sophomore transfers is 56%.
- Combined rates for upperclass transfers range from 49% (WI private transfers) to 80% (UW Colleges transfers). The combined rate for WTCS upperclass transfers is 66%.

UWS New Transfer Students: Campus-Specific Behavior

- The largest source of in-state new transfer activity is from Milwaukee Area Technical College to UW-Milwaukee (359).
- The second largest source of in-state new transfer activity is from Madison Area Technical College to UW-Madison (256).
- The third largest source of in-state new transfer activity is from UW-Waukesha to UW-Milwaukee (205).
- Overall, WTCS students transfer most frequently to UW-Milwaukee (493) and to the UW Colleges (470).

Highlights of 2001-02

- Compared to other transfer students, transfer students from WTCS enter with fewer credits, are older and are more likely to enroll on a part-time basis.
- Compared to WTCS non-college parallel students, college parallel students transfer in more credits, are younger, are more likely to enroll on a full-time basis, and are slightly more racially diverse.
- Average 1st year GPAs for WTCS transfer students (2.9) are slightly below those of other transfers (3.0).

“Transfers” are only part
of the story.....

JACAP
Joint WTCS/UWS
Program Assessment Study

Wisconsin Technical
College System

University of Wisconsin
System

October 24, 2002

Background:

JACAP's Recommendations

- Establish a WTCS/UW Program Assessment Design Working Group
- Develop a Data Sharing Agreement
- Design an appropriate reporting mechanism for program assessment and improvement
- Measure the success of programs that have articulation agreements
- Report annually to JACAP

Assessment Approach

- Establish a baseline for future assessment of student enrollment between WTCS and UW
- Identify current level of student movement from WTCS to UWS prior to new systemwide articulation agreements

New this year:

- Additional cohorts (beyond 1995 cohort)
- Student outcomes within specific programs; ex. GPAs and retention rates

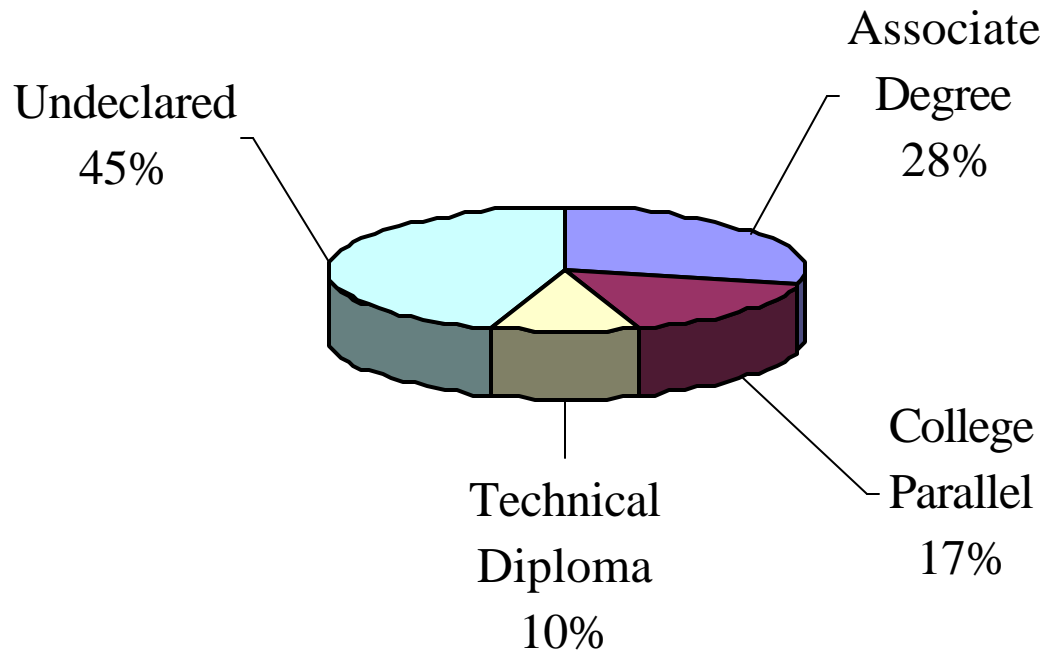
WTCS to UWS Enrollment

- Over 27,000 students attended a WTCS district in fiscal years 1994-95 through 2000-01 and subsequently enrolled at a UW campus.

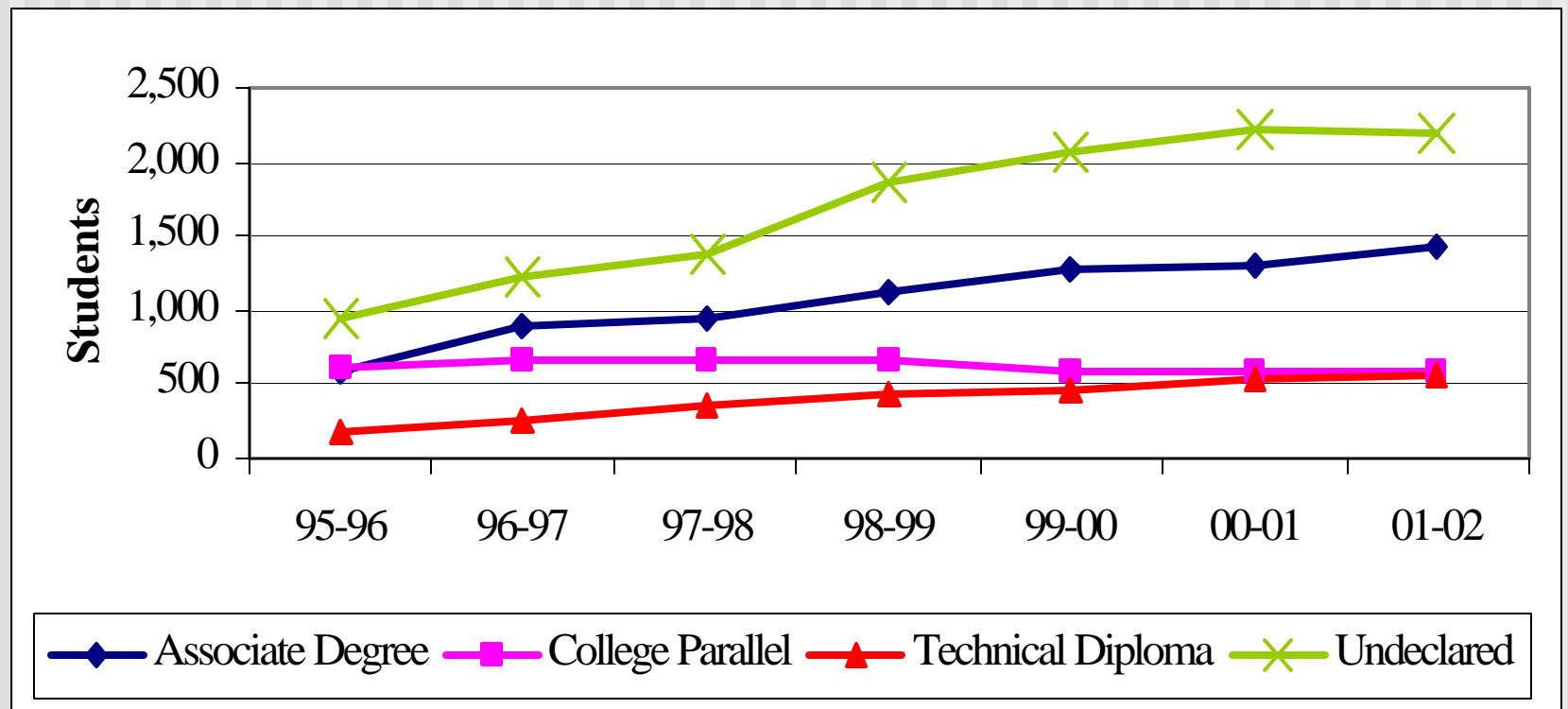
Of these 27,000 students:

- Almost half (47%) enrolled in the UWS the following year after leaving WTCS.
- 15% waited 1 year before enrolling at a UW
- 9% waited 2 years before enrolling at a UW
- 7% waited 3 years before enrolling at a UW
- 5% waited 4 years before enrolling at a UW

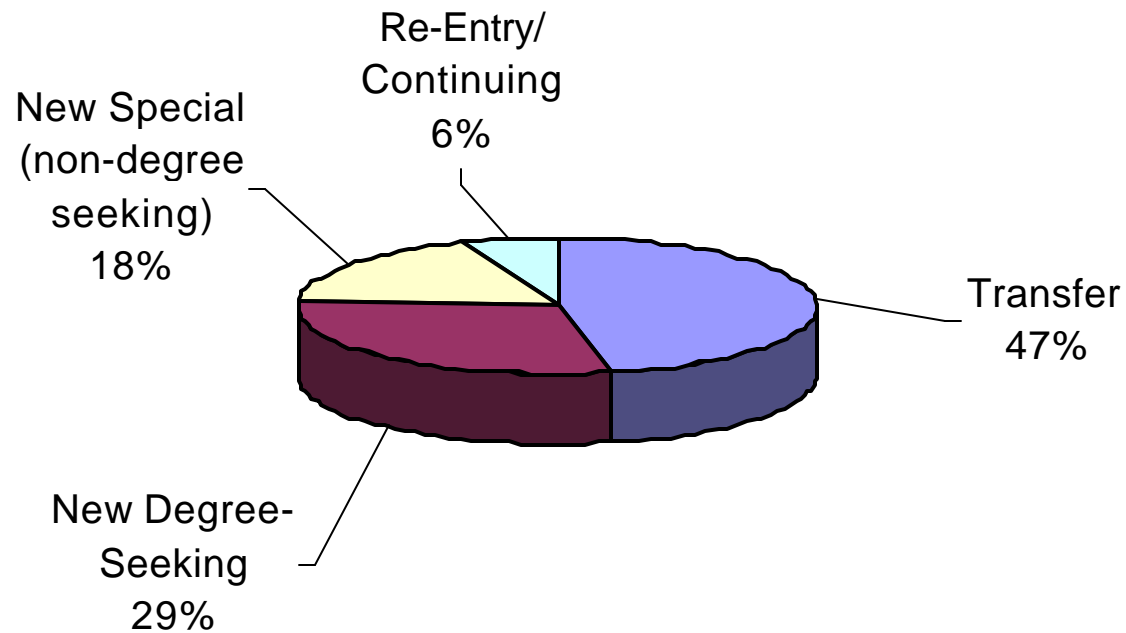
Program Type at WTCS



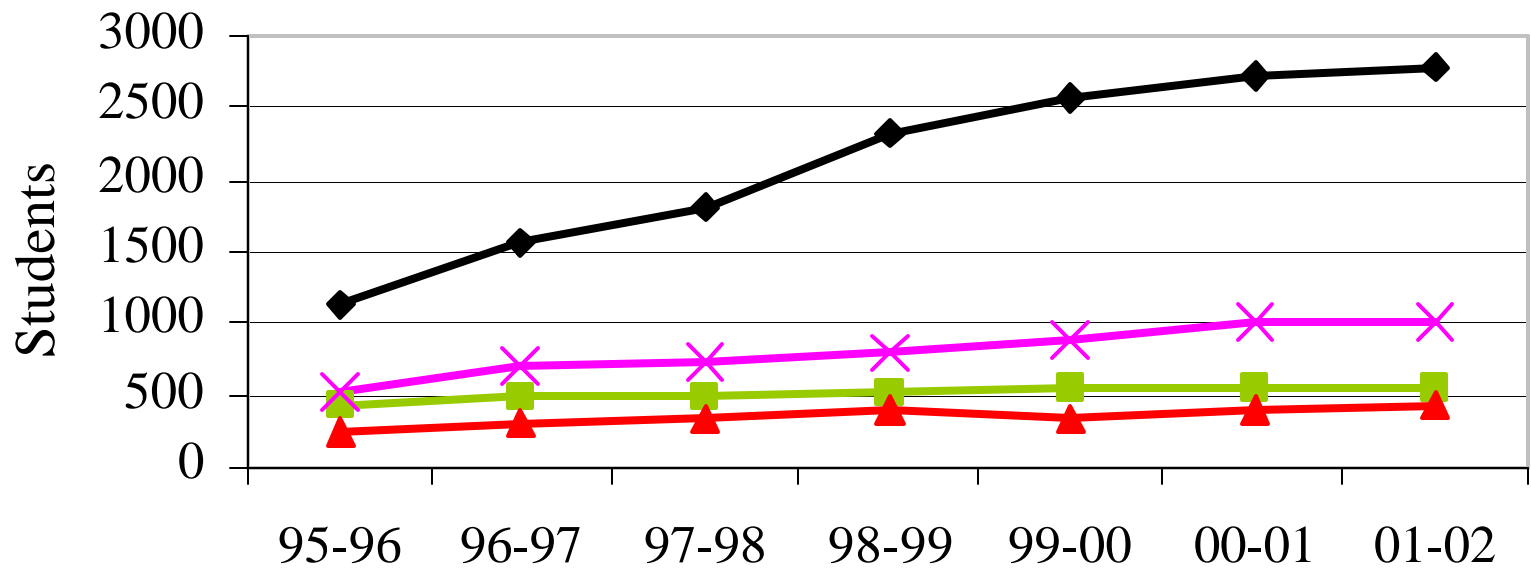
Program Type at WTCS



Entrance Status at UWS



Initial Classification at UWS



—◆— Freshman —■— Sophomore —▲— Upperclass —×— Special

2nd Year Retention at UWS

- WTCS students who entered the UWS as sophomores or upperclassmen had similar retention rates (79% and 78% respectively).
- WTCS students who entered the UWS as freshmen had lower retention rates (70%).
- Students who entered as special students (non-degree seeking) were retained at considerably lower rates (28%).

Average First Year GPA at UWS

- Average first year GPA of students who started out at a WTCS district and subsequently enrolled at a UW campus was 2.9 on a 4.0 scale.

Program to Program Comparisons

- The largest number of students (19%) were from the WTCS Humanities/Liberal Arts program group (primarily WTCS College Parallel students).
- These college parallel students entered a wide variety of UW majors: led by majors in the Education, Social Sciences, and Business areas.
- Overall, areas of significant program intersection included Business, Health Professions, and Engineering & Architecture.
- Overall, over half (58%) of the students did not have a declared UW major.

Program Specific Enrollments & Assessment

- Nursing
- Early Childhood Education
- Computer Information Systems (CIS)
- Marketing
- Criminal Justice

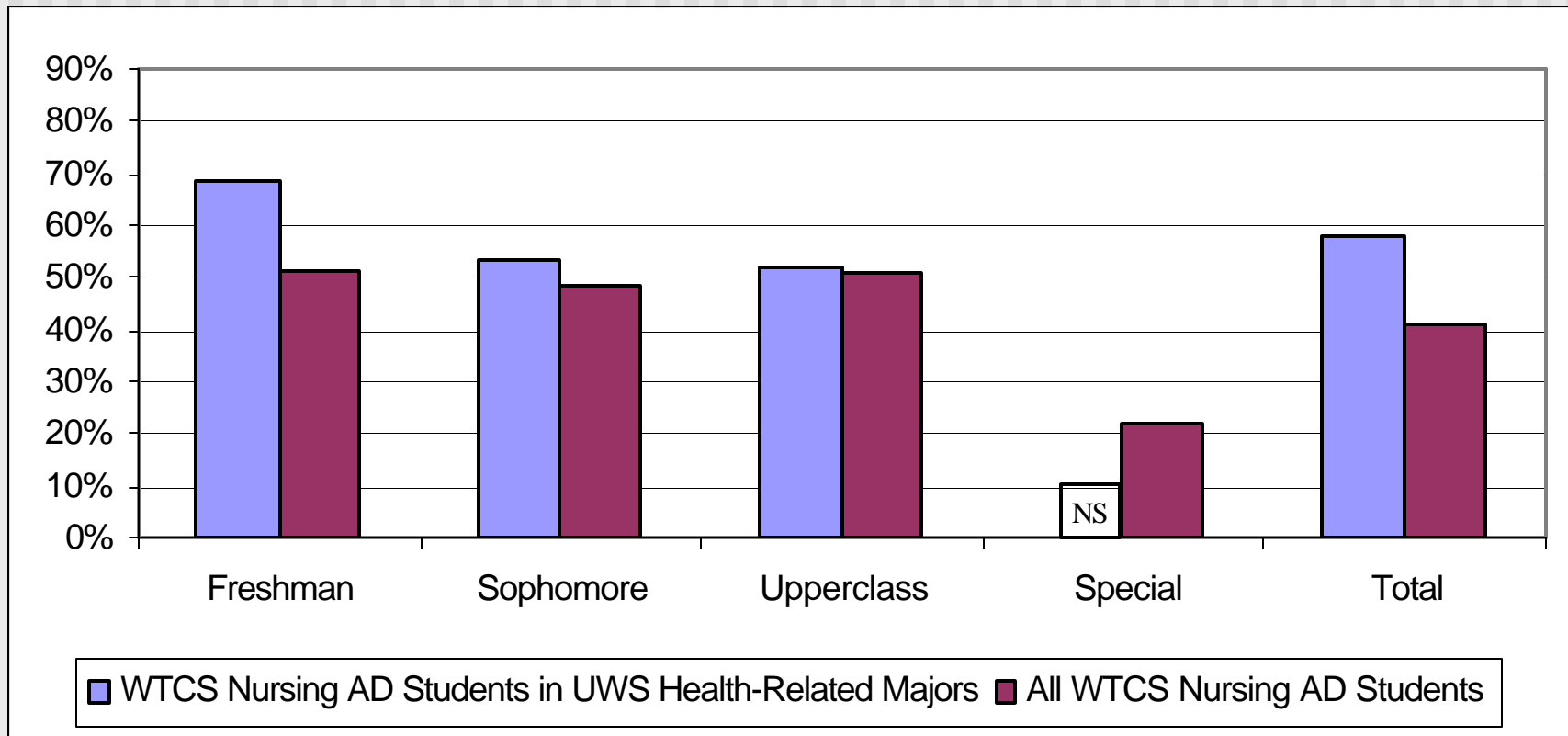
Nursing

- Between 1994 and 2000, over 640 students started out in a WTCS nursing associate degree program and later enrolled at a UW.
- A growing number of nursing students came to the UWS in the year immediately following their WTCS enrollment.
- Despite this trend, a significant number of WTCS nursing students wait several years before enrolling at a UW.

WTCS Nursing Students: Programs Entered at UWS

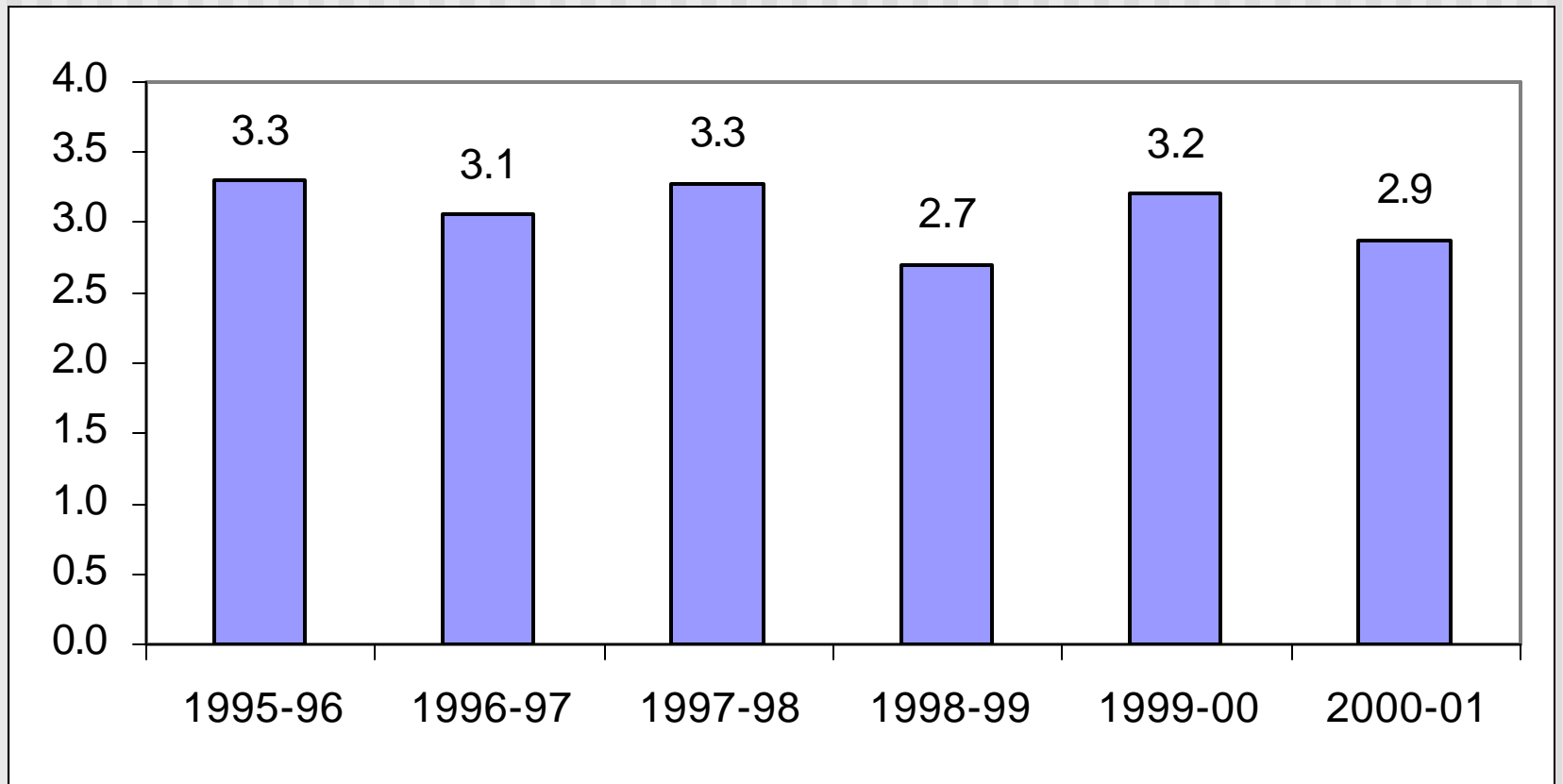
UWS Program Group	# of Students
Ag & Natural Resources (01)	1
Biological/Physical Sciences (02)	9
Business (03)	10
Communications/Arts (04)	4
Education (05)	20
Engineering & Architecture (06)	0
Health-Related Professions (07)	171
Home Economics/Personal Serv (08)	4
Humanities/Liberal Arts (09)	8
Math, Computer & Info Sciences (10)	2
Public Admin/Legal Services (11)	6
Social Sciences (12)	15
Trades/Technical (13)	0
Undeclared (14)	392
Total	642

WTCS Nursing Students: 2nd Yr Retention in UWS



NS-Not shown due to small cohort size

WTCS Nursing Students: Average First Year GPA



UWS Nursing Students: WTCS Source Program

WTCS Program	#	%
Nursing Associate Degree	166	43%
Nursing Assistant	115	30%
College Parallel	66	17%
Other	36	9%
Total	383	100%

Early Childhood Education

- Between 1994 and 2000, 222 students started out in a WTCS early childhood education program and later enrolled at a UW.
- Almost 60% of these students came to the UWS in the year immediately following their WTCS enrollment.
- Of those with a declared UWS major, the majority entered the education field at the UW.

Computer Information Systems (CIS)

- Between 1994 and 2000, over 700 students started out in a WTCS CIS program and later enrolled at a UW.
- The majority of students (56%) enrolled in the UWS in the year immediately following their WTCS enrollment.
- Of those with a declared UWS major, over half (54%) went into either Business or Math, Computer & Information Sciences.

Marketing

- Between 1994 and 2000, almost 700 students started out in a WTCS marketing program and later enrolled at a UW.
- Over half (54%) of these students came to the UWS in the year immediately following their WTCS enrollment.
- Of those with a declared UWS major, almost half (45%) went into a UWS business program. Another 22% went into a UWS education program.

Criminal Justice

- Between the years 1994 and 2000, over 500 students started out in a WTCS criminal justice program and later enrolled at a UW.
- This is an emerging area for articulation agreements.

Summary

- Studies of “Transfer” students capture about half of the student movement from WTCS to the UW.
- Of the students who come to the UWS after attending a WTCS, almost half enroll in the year immediately following their last WTCS year. One quarter wait 1-2 years before enrolling at a UW. And another quarter wait 3 or more years before enrolling at a UW.
- While the largest number of students come to the UW from a WTCS associate degree occupational program, one-tenth come from WTCS technical diploma programs.

Summary (cont.)

- A growing proportion of students from WTCS enter the UWS as freshmen.
- Students who entered the UWS as sophomores or upperclassmen had slightly higher retention rates than those who entered as freshmen.
- Program specific information has been provided to assist in the development and evaluation of articulation agreements.