

Access Update: The Class of Fall 1996

Executive Summary

In Fall 1996, 31.9 percent of Wisconsin high school graduates enrolled in the UW System, up from 31.2 percent in Fall 1995. The access rate for Wisconsin high school graduates has remained between 31 and 32 percent during all phases of Enrollment Management beginning in 1987.

In Fall 1994, Wisconsin ranked 5th in the nation in access of immediate resident new freshmen who enroll in public four-year higher education. During that year, 31.3 percent of Wisconsin high school graduates enrolled in the UW System compared with a national rate of 21.3 percent.

Over three-fifths (61%) of Wisconsin high school graduates who ranked in the top 10 percent of their class enrolled in the UW System in Fall 1996. This compares to 53 percent at the beginning of Enrollment Management. Also, 61 percent of Wisconsin high school graduates from the top quartile of their class enrolled in Fall 1996, the highest ever from that quartile.

The total number of UW System new freshman applicants decreased slightly from 41,677 in Fall 1995 to 41,214 in Fall 1996 (-1.1%). Within this total, Wisconsin resident applicants rose slightly (0.7%), while non-resident applicants fell 9.3 percent. The number of Minnesota compact applicants increased 3.4 percent.

The number of Wisconsin resident new freshman applicants who submitted multiple applications has remained at about 35 percent for the last three years. The proportion of Wisconsin resident new freshmen admitted to at least one UW System institution increased from 91 to 94 percent between Fall 1995 and Fall 1996. The proportion of nonresidents admitted increased from 78 percent to 84 percent, while the proportion of Minnesota compact new freshmen increased from 82 percent to 85 percent. Of those Wisconsin residents admitted, 80 percent enrolled in Fall 1996.

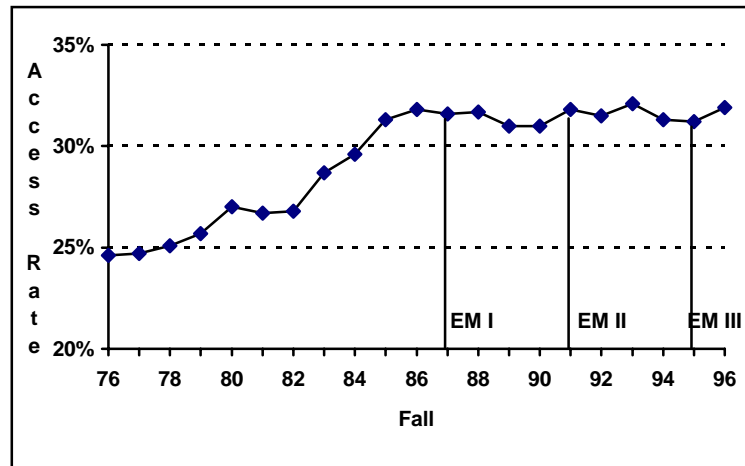
The number of transfer applicants fell three percent in Fall 1996, from 17,115 to 16,537. The proportion of transfer applicants who submit multiple applications declined from 14 to 10 percent. Ninety-two percent of Wisconsin resident transfer applicants were admitted to the UW System. The proportion of Minnesota compact and other nonresident transfer applicants who were admitted was lower than for Wisconsin applicants, at 84 percent and 91 percent respectively. Of those Wisconsin residents admitted, 78 percent enrolled in Fall 1996.

SECTION I. NEW FRESHMEN TRENDS

A. ACCESS RATE OF WISCONSIN HIGH SCHOOL GRADUATES

In Fall 1996, 31.9 percent of Wisconsin high school graduates enrolled in the UW System, up from 31.2 percent in Fall 1995 (Figure 1). Figure 1 also shows that the access rate for Wisconsin high school graduates remained between 31 and 32 percent during all phases of Enrollment Management¹.

Figure 1
Proportion of Wisconsin High School Graduates Who Immediately Enrolled in UW System as New Freshmen
Fall 1976 to Fall 1996

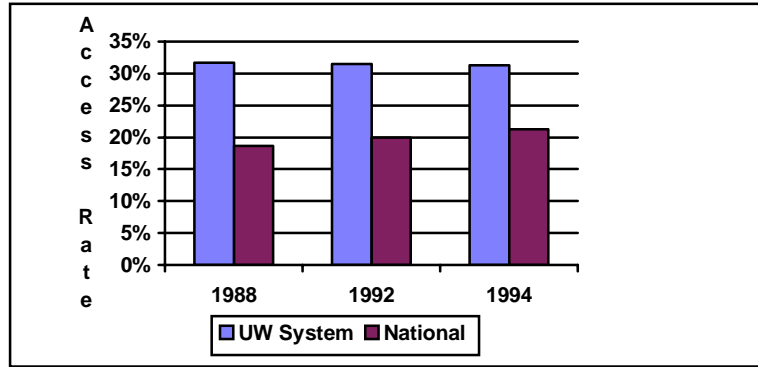


Access for Wisconsin high school graduates increased from 31.2 to 31.9 percent in Fall 1996.

National Comparisons

Wisconsin continues to rank above the national average in access of resident new freshmen who enroll immediately in public four-year higher education. In Fall 1994, 31.3 percent of Wisconsin high school graduates enrolled in the UW System. Nationally, 21.3 percent of high school graduates enrolled immediately in public four-year colleges. Over the last six years, Wisconsin has ranked between 4th and 5th place among states whose high school graduates enrolled immediately as new freshmen in public four-year institutions (Figure 2).

Figure 2
Comparison of UW System and National Access Rates
for Immediate New Freshmen Who Enrolled in
Public 4-Year Colleges



Wisconsin ranks 5th in the nation in access to public 4-year colleges.

B. PARTICIPATION OF WISCONSIN HIGH SCHOOL GRADUATES BY RANK

The participation of Wisconsin high school graduates from the top 10 percent of their class has increased steadily since 1987, reaching an all-time high of 61 percent in 1996 (Table 1). A record high was reached also in the proportion who graduated in the top quartile (61.1 percent, in Fall 1996).

Table 1
Percentage of Wisconsin High School Graduates by Rank
Who Enrolled Immediately as New Freshmen in the UW System
Fall 1986 to Fall 1996

	Top 10%	Top Quart*	2nd Quart	3rd Quart	4 th Quart
Fall					
1986	57.8%	56.3%	42.4%	22.6%	5.8%
1987 <--EM I	53.3%	55.3%	43.5%	22.4%	5.3%
1988	54.6%	56.4%	44.7%	20.9%	4.6%
1989	54.7%	56.8%	46.1%	18.3%	3.0%
1990	55.2%	57.2%	44.9%	18.7%	3.1%
1991 <--EM II	56.6%	58.9%	45.9%	19.4%	3.1%
1992	56.4%	59.1%	46.6%	17.4%	2.8%
1993	58.0%	60.4%	46.9%	18.0%	3.0%
1994	59.9%	60.9%	44.2%	17.3%	2.8%
1995 <--EM III	60.8%	60.3%	44.4%	17.1%	3.1%
1996	61.1%	61.1%	45.3%	18.1%	3.2%

61% of Wisconsin's top 10% of high school graduates enroll in the UW System.

There are some distinct differences in the distribution of high school graduates by rank among UW System institutions (Table 2). These differences may reflect a variety of factors, including institutional mission, size, and admission requirements. For equivalent data for Fall 1995, see Appendix B-Table A.

**C. TRENDS IN
NEW FRESHMAN
APPLICANTS**

**Table 2
Percentage of Wisconsin High School Graduates
Who Enrolled as New Freshmen by Rank and Institution
Fall 1996**

	Top Quart	2nd Quart	3rd Quart	4th Quart
UW-Madison	21.1%	2.3%	0.2%	0.0%
UW-Milwaukee	3.9%	5.3%	2.9%	1.0%
UW-Eau Claire	5.4%	4.0%	1.1%	0.0%
UW-Green Bay	2.8%	2.7%	0.7%	0.0%
UW-La Crosse	5.8%	3.5%	0.5%	0.0%
UW-Oshkosh	3.2%	4.5%	1.2%	0.0%
UW-Parkside	1.2%	1.3%	1.2%	0.1%
UW-Platteville	2.8%	2.5%	0.7%	0.0%
UW-River Falls	2.0%	1.8%	0.3%	0.0%
UW-Stevens Pt	4.1%	4.3%	1.0%	0.0%
UW-Stout	1.6%	2.5%	1.4%	0.2%
UW-Superior	0.4%	0.5%	0.2%	0.0%
UW-Whitewater	4.1%	5.6%	1.8%	0.2%
UW Centers	2.8%	4.6%	5.0%	1.5%
TOTAL	61.1%	45.3%	18.1%	3.2%

The total number of UW System new freshman applicants decreased slightly from 41,677 in Fall 1995 to 41,214 in Fall 1996 (-1.1%). Within this total, Wisconsin resident applicants rose slightly (0.7%), while non-resident applicants fell 9.3 percent. The number of Minnesota compact applicants increased 3.4 percent (Table 3).

**Table 3
UW System New Freshman Applicants by Residency Status²
Fall 1989 to Fall 1996**

	Fall 1989	Fall 1990	Fall 1991	Fall 1992	Fall 1993	Fall 1994	Fall 1995	% Change 1994 to 1995	Fall 1996	% Change 1995 to 1996
WI Res.	30,737	30,577	29,476	28,837	29,798	27,610	27,969	1.3%	28,168	.7%
Nonres.	10,103	8,832	8,400	8,712	8,437	9,271	8,879	-4.2%	8,055	-9.3%
Minn. Comp	4,467	4,317	4,377	4,353	4,558	4,514	4,829	7.0%	4,991	3.4%
Total	45,307	43,726	42,253	41,902	42,793	41,395	41,677	0.7%	41,214	-1.1%

New Freshman Applications by Residency and Institution

UW-Madison received the largest number of applications among all categories. While it had the largest number of Wisconsin resident applications, less than half of its applications were from state residents. UW Centers and UW-Oshkosh received the highest percent of applications from Wisconsin residents; 97 percent and 94 percent respectively (Table 4). For equivalent Fall 1995 data, see Appendix B-Table B.

**Table 4
New Freshman Applications by Residency Status and Institution³
Fall 1996**

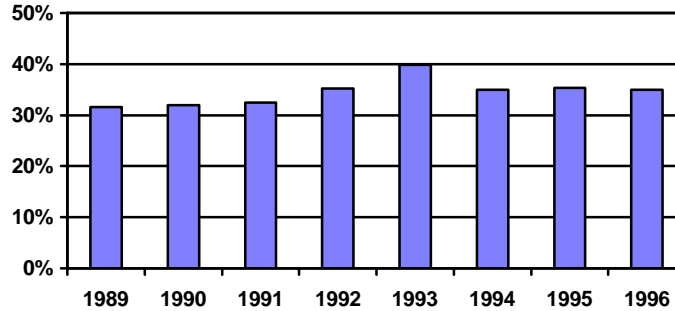
	Wisconsin Resident		Non-Resident		Minnesota Compact		All	
	Number	Percent	Number	Percent	Number	Percent	Number	Percent
UW-Madison	7,342	48%	6,247	41%	1,744	11%	15,333	100%
UW-Milwaukee	4,564	92%	321	7%	52	1%	4,937	100%
UW-Eau Claire	3,542	76%	104	2%	1,000	22%	4,646	100%
UW- Green Bay	2,190	91%	154	6%	57	2%	2,401	100%
UW-La Crosse	3,645	79%	196	4%	773	17%	4,614	100%
UW-Oshkosh	3,587	94%	190	5%	35	0%	3,812	100%
UW-Parkside	1,230	92%	93	7%	10	0%	1,333	100%
UW-Platteville	1,883	90%	164	8%	35	2%	2,082	100%
UW-River Falls	1,381	53%	68	3%	1,157	44%	2,606	100%
UW-Stevens Pt	3,147	90%	184	5%	155	4%	3,486	100%
UW-Stout	1,626	71%	67	3%	591	26%	2,284	100%
UW-Superior	404	66%	35	6%	177	29%	616	100%
UW-Whitewater	3,844	91%	382	9%	15	0%	4,241	100%
UW-Centers	3,941	97%	130	3%	1	0%	4,072	100%
UWS Total	42,326	75%	8,335	15%	5,802	10%	56,463	100%

Trends in New Freshmen Multiple Applications

The number of Wisconsin resident new freshmen applicants who submitted multiple applications has remained at about 35 percent for the last three years (Figure 3). The decline between 1993 and 1994 may partly be attributable to an increase in the application fee from \$10 to \$25 during this period.

Figure 3
Proportion of Wisconsin Resident New Freshmen Applicants
Submitting Multiple Applications
Fall 1989 to Fall 1996

About one-third of Wisconsin new freshmen submit more than one application.



D. TRENDS IN NEW FRESHMAN ADMISSION RATES⁴

Between Fall 1995 and Fall 1996, the proportion of Wisconsin resident new freshmen admitted to at least one UW System increased from 91 to 94 percent. The proportion of nonresidents admitted increased from 78 percent to 84 percent, while the proportion of Minnesota compact new freshmen increased from 82 percent to 85 percent (Table 5)

Table 5
UW System New Freshman Admission Rate by Residency
Fall 1989 to Fall 1996

	WI Resident	Non resident	Minn. Comp.	Total
Fall 1989	92%	65%	77%	85%
Fall 1990	93%	72%	80%	88%
Fall 1991	93%	77%	84%	89%
Fall 1992	91%	73%	79%	86%
Fall 1993	91%	74%	74%	86%
Fall 1994	92%	68%	80%	85%
Fall 1995	91%	78%	82%	87%
Fall 1996	94%	84%	85%	91%

94% of Wisconsin new freshmen applicants were admitted somewhere in the UW System.

New Freshman Admission Rates by Institution

The percentage of new freshmen admitted by institution is shown in Appendix A-Table A. Generally, the institutional admission rates are at or below the systemwide total rate of 91 percent (Table 5), indicating that an applicant rejected at one UW System institution is likely to be admitted to another UW institution.

**E. NEW FRESHMAN
YIELD RATES**

The percent of admitted Wisconsin residents who enrolled in the UW System for Fall 1996 remained stable from Fall 1995 at 80 percent. The percent of admitted Minnesota compact applicants who enrolled increased to 58 percent in 1996 from 56 percent in 1995. About one-third of admitted nonresidents enrolled in Fall 1996, up slightly from Fall 1995 (Table 6).

**Table 6
UW System New Freshman Yield Rates by Residency Status
Fall 1989 to Fall 1996**

	WI Resident	Nonresident	Minn. Comp.	Total
Fall 1989	79%	36%	63%	70%
Fall 1990	78%	33%	60%	69%
Fall 1991	79%	32%	60%	69%
Fall 1992	79%	32%	57%	69%
Fall 1993	76%	33%	55%	67%
Fall 1994	78%	33%	58%	68%
Fall 1995	80%	31%	56%	68%
Fall 1996	80%	33%	58%	69%

*80% of Wisconsin
new freshman admits
enroll somewhere in
the UW System.*

**New Freshman Yield
Rates by Institution**

The new freshman yield rates for each UW institution are shown in Appendix A-Table B. In Fall 1996, nine UW institutions, enrolled the same or higher proportion of new freshmen admits than one year earlier.

SECTION II. TRANSFER TRENDS⁵

**A. TRENDS IN
TRANSFER
APPLICANTS**

Systemwide, the number of transfer applicants increased 5.9 percent in Fall 1995, but fell 3.4 percent in Fall 1996 to 16,537 (Table 7). The biggest decline occurred in non-resident transfer applications.

**Table 7
UW System Transfer Applicants, Fall 1989 to Fall 1996**

	Fall 1989	Fall 1990	Fall 1991	Fall 1992	Fall 1993	Fall 1994	Fall 1995	% Change 1994 to 1995	Fall 1996	% Change 1995 to 1996
WI Res	11,274	11,754	12,172	11,217	11,764	11,196	12,211	9.1%	12,044	-1.4%
Non Res	3,251	3,137	3,384	3,413	3,562	3,539	3,313	-6.4%	2,941	-11.2%
Minn. Comp.	1,498	1,654	1,1661	1,433	1,383	1,423	1,591	11.8%	1,552	-2.5%
Total	16,023	16,545	17,217	16,063	16,709	16,158	17,115	5.9%	16,537	-3.4%

Transfer Applications by Residency and Institution

UW-Madison received the largest number of transfer applications in Fall 1996 (3,992), followed by UW-Milwaukee (2,913). UW-Madison received 54 percent of its applications from Wisconsin residents. In contrast, 85 percent of transfer applications to UW-Milwaukee were from Wisconsin residents. As with new freshman applications, UW Centers and UW-Oshkosh received the highest percent of transfer applications from Wisconsin residents, 95 and 92 percent respectively (Table 8). For equivalent data for Fall 1995, see Appendix B-Table C.

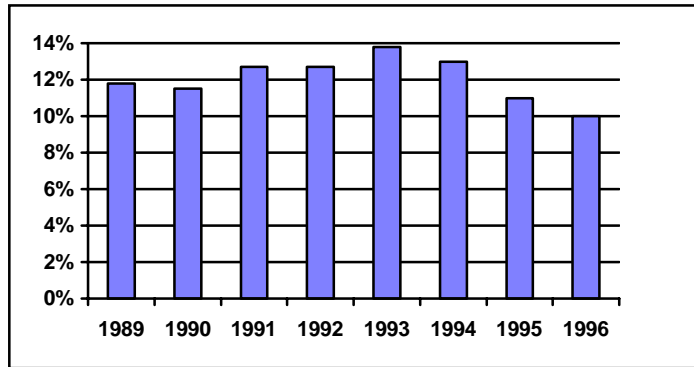
**Table 8
Transfer Applications by Residency Status and Institution
Fall 1996**

	Wisconsin Resident		Non-Resident		Minn. Comp.		All	
	Number	Percent	Number	Percent	Number	Percent	Number	Percent
UW-Madison	2,152	54%	1,531	38%	309	8%	3,992	100%
UW-Milwaukee	2,476	85%	398	14%	39	1%	2,913	100%
UW-Eau Claire	957	71%	142	11%	250	19%	1,349	100%
UW-Green Bay	834	86%	115	12%	16	2%	965	100%
UW-La Crosse	772	78%	76	8%	139	14%	987	100%
UW-Oshkosh	1,217	92%	85	6%	20	2%	1,322	100%
UW-Parkside	373	71%	148	28%	2	0%	523	100%
UW-Platteville	414	75%	108	20%	29	5%	551	100%
UW-River Falls	319	46%	40	6%	329	48%	688	100%
UW-Stevens Pt	1,190	88%	113	8%	49	4%	1,352	100%
UW-Stout	777	72%	65	6%	237	22%	1,079	100%
UW-Superior	234	48%	51	10%	202	41%	487	100%
UW-Whitewater	1,203	89%	138	10%	7	0%	1,348	100%
UW-Centers	740	95%	40	5%	3	0%	783	100%
UWS Total	13,658	74%	3,050	17%	1,631	9%	18,339	100%

Trends in Transfer Multiple Applications

The percent of Wisconsin resident transfers who submitted multiple applications has been declining since Fall 1993. Only 10 percent of resident transfer applicants submitted multiple applications in Fall 1996 compared with 14 percent in Fall 1993 (Figure 4); this is significantly lower than the percent of resident new freshmen multiple applications (35 percent in 1996, Figure 3).

Figure 4
Proportion of Wisconsin Resident Transfer Submitting Multiple Applications
Fall 1989 to Fall 1996



The proportion of transfer applicants submitting more than one application has decreased from 14% in Fall 1993 to 10% in Fall 1996.

B. TRENDS IN TRANSFER ADMISSION RATES

Wisconsin residents applying for transfer were only slightly less likely to gain admission to the UW System than those applying as new freshmen. In Fall 1996, 92 percent of resident transfer applicants were admitted compared to 94 percent of the new freshman resident applicants. The proportion of Minnesota compact and other nonresident transfer applicants who were admitted was lower than for Wisconsin applicants, at 84 percent and 91 percent respectively (Table 9).

Table 9
UW System Transfer Admission Rate by Residency Status
Fall 1989 to Fall 1996

	WI Resident	Nonresident	Minn. Comp.	Total
Fall 1989	82%	83%	74%	81%
Fall 1990	84%	79%	78%	83%
Fall 1991	82%	77%	77%	81%
Fall 1992	80%	69%	75%	77%
Fall 1993	83%	76%	74%	81%
Fall 1994	87%	74%	85%	84%
Fall 1995	90%	82%	86%	88%
Fall 1996	92%	84%	91%	91%

92% of Wisconsin transfer applicants were admitted somewhere in the UW System in Fall 1996.

Transfer Admission Rates by Institution

Appendix A -Table C shows the transfer admission rates by institution between Fall 1989 and Fall 1996. Nearly all UW institutions admitted a higher proportion of total transfers in Fall 1996 than in Fall 1995.

C. TRANSFER YIELD RATES

Transfer yield rates increased slightly for all residency types in Fall 1996. However, as was true for new freshmen, Wisconsin-resident transfers are more likely to enroll than any other group. In Fall 1996, 78 percent of admitted Wisconsin transfers enrolled somewhere in the UW System. Fifty-eight percent of nonresident transfers and 68 percent of Minnesota compact transfers enrolled in Fall 1996 (Table 10)

**Table 10
UW System Transfer Yield Rates by Residency Status
Fall 1989 to Fall 1996**

	WI Resident	Nonresident	Minn. Comp.	Total
Fall 1989	79%	52%	68%	73%
Fall 1990	78%	52%	69%	73%
Fall 1991	82%	51%	72%	76%
Fall 1992	80%	51%	68%	74%
Fall 1993	79%	49%	66%	73%
Fall 1994	80%	50%	67%	74%
Fall 1995	76%	53%	62%	74%
Fall 1996	78%	58%	68%	74%

78% of Wisconsin transfer admits enroll somewhere in the UW System in Fall 1996.

Transfer Yield Rates by Institution

Appendix A-Table D shows the yield rates for transfers by institution. Twelve institutions had higher yield rates for Wisconsin residents in 1996 than in 1995. Ten institutions had higher yield rates for non-resident and Minnesota compacts in Fall 1996 than in Fall 1995.

APPENDIX A

Appendix A-Table A New Freshman Admission Rates by Institution and Residency Status Fall 1989 to Fall 1996

1. ALL NEW FRESHMEN

	MSN	MIL	EAU	GBY	LAC	OSH	PKS	PLT	RVF	STP	STO	SUP	WTW	CTR
Fall 1989	76%	87%	73%	81%	83%	83%	84%	87%	89%	90%	63%	91%	81%	94%
Fall 1990	80%	87%	75%	80%	87%	83%	90%	91%	81%	89%	82%	87%	82%	97%
Fall 1991	83%	86%	79%	82%	87%	80%	92%	89%	86%	85%	81%	87%	86%	94%
Fall 1992	79%	82%	79%	77%	88%	80%	94%	78%	79%	79%	75%	79%	87%	94%
Fall 1993	74%	83%	79%	80%	83%	75%	89%	76%	74%	76%	76%	84%	84%	95%
Fall 1994	68%	85%	82%	83%	82%	79%	91%	89%	84%	82%	92%	88%	83%	96%
Fall 1995	75%	87%	85%	80%	81%	80%	91%	88%	84%	85%	91%	90%	87%	99%
Fall 1996	82%	90%	94%	91%	81%	89%	91%	90%	85%	93%	94%	92%	87%	98%

2. WI RESIDENTS

	MSN	MIL	EAU	GBY	LAC	OSH	PKS	PLT	RVF	STP	STO	SUP	WTW	CTR
Fall 1989	91%	87%	76%	83%	84%	84%	85%	87%	85%	90%	67%	92%	84%	94%
Fall 1990	91%	87%	77%	81%	88%	84%	91%	91%	86%	90%	84%	88%	84%	97%
Fall 1991	90%	86%	81%	82%	87%	81%	92%	90%	90%	86%	83%	89%	87%	94%
Fall 1992	87%	83%	81%	78%	88%	81%	94%	80%	82%	80%	76%	80%	88%	94%
Fall 1993	77%	84%	82%	81%	83%	75%	89%	77%	79%	76%	76%	84%	85%	95%
Fall 1994	75%	85%	85%	84%	82%	79%	91%	89%	88%	83%	92%	89%	84%	96%
Fall 1995	76%	88%	88%	86%	82%	80%	91%	89%	87%	85%	91%	91%	88%	99%
Fall 1996	82%	90%	95%	91%	82%	89%	91%	91%	87%	94%	94%	91%	88%	98%

3. NON RESIDENT

	MSN	MIL	EAU	GBY	LAC	OSH	PKS	PLT	RVF	STP	STO	SUP	WTW	CTR
Fall 1989	60%	86%	69%	65%	74%	62%	81%	81%	72%	82%	52%	91%	63%	98%
Fall 1990	67%	84%	76%	69%	80%	71%	83%	87%	81%	85%	76%	85%	67%	95%
Fall 1991	74%	84%	79%	75%	85%	75%	86%	85%	96%	79%	66%	84%	71%	98%
Fall 1992	71%	69%	77%	66%	87%	73%	100%	60%	73%	65%	69%	79%	72%	96%
Fall 1993	71%	70%	69%	72%	89%	72%	84%	67%	77%	65%	74%	80%	79%	97%
Fall 1994	63%	77%	91%	80%	82%	78%	95%	90%	78%	73%	88%	91%	72%	94%
Fall 1995	75%	85%	89%	77%	78%	74%	94%	81%	83%	80%	91%	88%	81%	99%
Fall 1996	83%	84%	96%	88%	72%	89%	91%	81%	91%	92%	92%	89%	75%	99%

4. MINNESOTA COMPACT

	MSN	MIL	EAU	GBY	LAC	OSH	PKS	PLT	RVF	STP	STO	SUP	WTW	CTR
Fall 1989	83%	77%	75%	73%	79%	68%	n/a	91%	76%	n/a	56%	91%	93%	100%
Fall 1990	82%	84%	68%	56%	82%	83%	n/a	95%	77%	n/a	79%	84%	74%	100%
Fall 1991	84%	87%	73%	86%	84%	58%	n/a	84%	82%	n/a	79%	83%	81%	80%
Fall 1992	77%	82%	73%	65%	84%	62%	100%	59%	77%	n/a	74%	77%	65%	100%
Fall 1993	66%	88%	70%	70%	81%	59%	100%	74%	67%	n/a	74%	86%	95%	100%
Fall 1994	65%	78%	78%	82%	82%	75%	100%	81%	81%	n/a	91%	88%	77%	86%
Fall 1995	69%	86%	85%	90%	78%	80%	90%	87%	81%	79%	89%	90%	74%	n/a
Fall 1996	75%	85%	94%	90%	79%	89%	90%	91%	82%	94%	94%	94%	73%	100%

Appendix A-Table B
New Freshman Yield Rates by Institution and Residency Status
Fall 1989 to Fall 1996

1. ALL NEW FRESHMEN

	MSN	MIL	EAU	GBY	LAC	OSH	PKS	PLT	RVF	STP	STO	SUP	WTW	CTR
Fall 1989	47%	57%	50%	50%	49%	49%	66%	58%	64%	55%	63%	61%	52%	79%
Fall 1990	45%	57%	49%	51%	48%	48%	64%	54%	58%	51%	53%	57%	54%	71%
Fall 1991	44%	53%	47%	48%	47%	48%	64%	54%	61%	48%	59%	67%	51%	77%
Fall 1992	43%	53%	47%	46%	46%	48%	66%	53%	57%	46%	56%	57%	50%	76%
Fall 1993	43%	53%	44%	41%	43%	44%	57%	48%	53%	45%	53%	50%	50%	73%
Fall 1994	46%	56%	48%	48%	47%	51%	65%	51%	61%	50%	56%	52%	53%	77%
Fall 1995	44%	56%	48%	43%	48%	48%	62%	51%	55%	58%	58%	52%	54%	95%
Fall 1996	46%	56%	49%	48%	49%	47%	61%	53%	56%	50%	61%	57%	53%	80%

2. WI RESIDENTS

	MSN	MIL	EAU	GBY	LAC	OSH	PKS	PLT	RVF	STP	STO	SUP	WTW	CTR
Fall 1989	58%	59%	49%	52%	50%	50%	69%	60%	64%	55%	64%	59%	54%	79%
Fall 1990	57%	59%	50%	51%	49%	49%	66%	56%	56%	52%	53%	61%	55%	70%
Fall 1991	55%	55%	47%	47%	46%	48%	66%	56%	59%	50%	59%	67%	52%	77%
Fall 1992	55%	55%	47%	46%	46%	49%	71%	54%	57%	49%	55%	55%	52%	76%
Fall 1993	53%	55%	44%	42%	44%	44%	59%	50%	52%	45%	54%	47%	51%	74%
Fall 1994	60%	59%	49%	50%	47%	51%	67%	53%	58%	50%	58%	48%	55%	77%
Fall 1995	60%	58%	48%	43%	48%	49%	63%	52%	56%	52%	58%	50%	55%	95%
Fall 1996	60%	57%	49%	50%	49%	47%	63%	54%	56%	50%	62%	57%	54%	80%

3. NON RESIDENT

	MSN	MIL	EAU	GBY	LAC	OSH	PKS	PLT	RVF	STP	STO	SUP	WTW	CTR
Fall 1989	30%	27%	42%	30%	56%	39%	37%	52%	53%	39%	50%	55%	36%	77%
Fall 1990	26%	30%	52%	35%	38%	43%	42%	41%	39%	25%	44%	38%	45%	84%
Fall 1991	28%	21%	38%	28%	55%	49%	29%	42%	18%	19%	36%	53%	36%	60%
Fall 1992	26%	24%	32%	38%	34%	43%	36%	45%	35%	17%	46%	60%	36%	81%
Fall 1993	29%	25%	37%	22%	40%	46%	40%	39%	41%	26%	41%	53%	41%	69%
Fall 1994	29%	23%	34%	31%	38%	49%	39%	32%	84%	25%	39%	51%	40%	76%
Fall 1995	25%	27%	38%	30%	43%	44%	44%	44%	56%	44%	51%	43%	41%	89%
Fall 1996	28%	29%	30%	29%	36%	42%	39%	46%	62%	45%	48%	48%	43%	74%

4. MINNESOTA COMPACT

	MSN	MIL	EAU	GBY	LAC	OSH	PKS	PLT	RVF	STP	STO	SUP	WTW	CTR
Fall 1989	53%	34%	53%	21%	40%	71%	0%	0%	65%	n/a	64%	66%	36%	80%
Fall 1990	52%	35%	44%	70%	46%	34%	0%	26%	64%	n/a	56%	55%	36%	33%
Fall 1991	49%	25%	45%	29%	47%	27%	0%	33%	62%	n/a	63%	68%	38%	25%
Fall 1992	47%	29%	46%	24%	48%	38%	0%	39%	55%	n/a	58%	61%	53%	20%
Fall 1993	47%	34%	43%	37%	41%	21%	50%	22%	56%	n/a	51%	58%	25%	33%
Fall 1994	47%	31%	47%	45%	45%	33%	100%	35%	62%	n/a	55%	65%	38%	50%
Fall 1995	43%	43%	53%	38%	50%	31%	33%	29%	53%	39%	59%	57%	29%	na
Fall 1996	46%	54%	50%	48%	45%	45%	22%	32%	56%	47%	62%	59%	9%	na

Appendix A-Table C
Transfer Admission Rates by Institution and Residency Status
Fall 1989 to Fall 1996

1. ALL NEW FRESHMEN

	MSN	MIL	EAU	GBY	LAC	OSH	PKS	PLT	RVF	STP	STO	SUP	WTW	CTR
Fall 1989	79%	90%	64%	75%	78%	81%	96%	92%	79%	66%	59%	96%	50%	97%
Fall 1990	75%	89%	63%	82%	81%	89%	94%	78%	83%	64%	75%	98%	55%	95%
Fall 1991	64%	89%	65%	82%	87%	91%	94%	86%	82%	72%	73%	94%	60%	93%
Fall 1992	58%	87%	61%	67%	84%	90%	97%	66%	72%	60%	76%	84%	76%	95%
Fall 1993	61%	89%	70%	89%	82%	85%	95%	76%	71%	67%	79%	88%	79%	94%
Fall 1994	62%	90%	70%	90%	90%	92%	96%	94%	90%	66%	97%	98%	82%	95%
Fall 1995	71%	93%	85%	94%	95%	92%	95%	94%	89%	82%	97%	98%	88%	97%
Fall 1996	73%	93%	97%	95%	95%	92%	96%	96%	90%	93%	97%	99%	91%	97%

2. WI RESIDENTS

	MSN	MIL	EAU	GBY	LAC	OSH	PKS	PLT	RVF	STP	STO	SUP	WTW	CTR
Fall 1989	81%	90%	62%	75%	79%	81%	95%	90%	81%	65%	58%	96%	51%	97%
Fall 1990	77%	88%	61%	82%	78%	89%	92%	76%	87%	65%	76%	98%	56%	95%
Fall 1991	66%	89%	63%	82%	84%	91%	93%	83%	84%	71%	73%	95%	61%	92%
Fall 1992	63%	87%	57%	66%	81%	90%	96%	58%	69%	60%	76%	83%	76%	95%
Fall 1993	65%	88%	67%	90%	80%	85%	95%	71%	83%	65%	80%	86%	80%	94%
Fall 1994	66%	90%	67%	89%	89%	92%	96%	92%	91%	67%	96%	98%	83%	95%
Fall 1995	74%	92%	84%	94%	95%	92%	95%	93%	93%	92%	97%	99%	88%	98%
Fall 1996	76%	93%	96%	95%	94%	91%	95%	96%	90%	92%	97%	100%	92%	96%

3. NON RESIDENT

	MSN	MIL	EAU	GBY	LAC	OSH	PKS	PLT	RVF	STP	STO	SUP	WTW	CTR
Fall 1989	79%	87%	61%	78%	75%	n/a	100%	95%	71%	77%	66%	98%	47%	100%
Fall 1990	74%	90%	86%	80%	91%	n/a	99%	85%	81%	60%	65%	93%	48%	98%
Fall 1991	61%	91%	82%	79%	99%	87%	96%	94%	76%	80%	66%	94%	50%	100%
Fall 1992	52%	87%	84%	69%	95%	87%	99%	82%	78%	61%	65%	87%	77%	100%
Fall 1993	58%	91%	86%	87%	87%	86%	97%	87%	63%	73%	65%	89%	81%	97%
Fall 1994	57%	90%	82%	93%	96%	93%	97%	97%	95%	63%	98%	100%	79%	93%
Fall 1995	68%	94%	94%	89%	92%	94%	97%	97%	94%	81%	97%	98%	88%	91%
Fall 1996	70%	94%	100%	94%	97%	92%	98%	97%	97%	96%	100%	96%	89%	97%

4. MINNESOTA COMPACT

	MSN	MIL	EAU	GBY	LAC	OSH	PKS	PLT	RVF	STP	STO	SUP	WTW	CTR
Fall 1989	72%	93%	78%	63%	71%	89%	n/a	94%	78%	n/a	57%	96%	100%	100%
Fall 1990	70%	100%	58%	100%	87%	90%	n/a	82%	81%	n/a	75%	99%	67%	80%
Fall 1991	55%	82%	62%	67%	93%	100%	n/a	96%	81%	n/a	77%	94%	62%	100%
Fall 1992	55%	100%	57%	71%	84%	100%	100%	79%	n/a	n/a	78%	84%	88%	100%
Fall 1993	50%	91%	70%	82%	87%	88%	100%	93%	n/a	n/a	85%	91%	55%	100%
Fall 1994	53%	96%	76%	82%	94%	100%	100%	100%	n/a	n/a	98%	97%	82%	100%
Fall 1995	63%	97%	81%	91%	97%	93%	100%	98%	86%	72%	97%	98%	88%	100%
Fall 1996	69%	93%	99%	100%	97%	100%	96%	89%	89%	98%	98%	100%	83%	100%

Appendix A-Table D
Transfer Yield Rates by Institution and Residency Status
Fall 1989 to Fall 1996

1. ALL NEW FRESHMEN

	MSN	MIL	EAU	GBY	LAC	OSH	PKS	PLT	RVF	STP	STO	SUP	WTW	CTR
Fall 1989	69%	79%	53%	54%	62%	72%	71%	46%	70%	63%	71%	61%	74%	89%
Fall 1990	66%	77%	54%	57%	60%	70%	69%	39%	70%	71%	71%	61%	72%	89%
Fall 1991	65%	80%	58%	66%	61%	73%	73%	62%	72%	63%	75%	74%	67%	96%
Fall 1992	68%	72%	55%	59%	57%	71%	64%	56%	72%	67%	76%	76%	71%	89%
Fall 1993	66%	76%	52%	56%	53%	67%	63%	59%	70%	70%	72%	75%	67%	89%
Fall 1994	61%	80%	57%	61%	56%	69%	88%	60%	55%	69%	76%	73%	70%	86%
Fall 1995	66%	74%	60%	58%	54%	62%	84%	54%	60%	64%	69%	69%	59%	92%
Fall 1996	69%	74%	64%	66%	62%	64%	85%	72%	58%	68%	72%	81%	60%	77%

2. WI RESIDENTS

	MSN	MIL	EAU	GBY	LAC	OSH	PKS	PLT	RVF	STP	STO	SUP	WTW	CTR
Fall 1989	79%	83%	51%	59%	65%	68%	79%	61%	65%	62%	69%	57%	75%	91%
Fall 1990	75%	81%	54%	58%	63%	68%	76%	51%	69%	67%	74%	53%	73%	89%
Fall 1991	75%	83%	57%	71%	64%	73%	81%	78%	74%	60%	80%	73%	69%	97%
Fall 1992	76%	77%	55%	63%	65%	74%	70%	85%	71%	68%	77%	94%	71%	90%
Fall 1993	74%	80%	54%	61%	61%	70%	68%	82%	69%	72%	73%	88%	67%	90%
Fall 1994	73%	84%	58%	64%	62%	70%	81%	76%	64%	66%	77%	72%	71%	88%
Fall 1995	74%	78%	60%	62%	57%	64%	80%	72%	57%	64%	69%	77%	59%	93%
Fall 1996	76%	79%	62%	69%	62%	65%	88%	83%	57%	68%	73%	93%	61%	79%

3. NON RESIDENT

	MSN	MIL	EAU	GBY	LAC	OSH	PKS	PLT	RVF	STP	STO	SUP	WTW	CTR
Fall 1989	51%	46%	62%	27%	55%	n/a	54%	24%	58%	50%	64%	67%	60%	70%
Fall 1990	48%	48%	64%	51%	52%	n/a	56%	17%	77%	75%	38%	60%	65%	87%
Fall 1991	47%	55%	60%	33%	64%	77%	56%	32%	50%	51%	42%	62%	55%	86%
Fall 1992	51%	40%	57%	33%	22%	45%	57%	20%	n/a	29%	66%	60%	69%	71%
Fall 1993	50%	48%	53%	26%	23%	52%	54%	19%	47%	36%	58%	63%	61%	85%
Fall 1994	43%	51%	63%	40%	36%	48%	66%	25%	54%	42%	70%	59%	65%	69%
Fall 1995	51%	43%	70%	29%	46%	28%	97%	25%	57%	66%	53%	53%	56%	59%
Fall 1996	56%	45%	76%	43%	56%	49%	79%	44%	72%	69%	53%	59%	51%	54%

4. MINNESOTA COMPACT

	MSN	MIL	EAU	GBY	LAC	OSH	PKS	PLT	RVF	STP	STO	SUP	WTW	CTR
Fall 1989	73%	60%	54%	20%	42%	38%	n/a	0%	73%	n/a	79%	64%	0%	0%
Fall 1990	71%	61%	46%	67%	51%	44%	n/a	14%	n/a	n/a	n/a	41%	100%	25%
Fall 1991	58%	71%	61%	50%	40%	67%	n/a	12%	72%	n/a	75%	80%	25%	50%
Fall 1992	78%	50%	50%	60%	52%	36%	n/a	10%	66%	n/a	76%	65%	57%	100%
Fall 1993	66%	77%	45%	36%	41%	27%	100%	4%	74%	n/a	76%	68%	67%	29%
Fall 1994	51%	63%	47%	33%	44%	69%	100%	22%	74%	n/a	78%	80%	44%	0%
Fall 1995	70%	56%	47%	50%	47%	50%	0%	8%	63%	63%	75%	63%	43%	100%
Fall 1996	72%	43%	64%	36%	68%	59%	50%	27%	58%	64%	76%	73%	60%	67%

APPENDIX B

Appendix B - Table A
Percentage of Wisconsin High School Graduates Who Enrolled Immediately as New Freshmen by Rank and Institution, Fall 1995

	Top Quart	2nd Quart	3rd Quart	4th Quart
UW-Madison	21.3%	2.1%	0.1%	0.0%
UW-Milwaukee	3.5%	5.0%	2.6%	0.7%
UW-Eau Claire	5.3%	4.0%	0.9%	0.0%
UW-Green Bay	2.9%	2.2%	0.3%	0.0%
UW-La Crosse	5.6%	3.5%	0.4%	0.0%
UW-Oshkosh	3.6%	5.0%	0.7%	0.0%
UW-Parkside	1.2%	1.4%	1.1%	0.1%
UW-Platteville	2.7%	2.3%	0.7%	0.1%
UW-River Falls	1.5%	1.4%	0.5%	0.0%
UW-Stevens Pt	4.4%	4.5%	0.4%	0.1%
UW-Stout	1.2%	2.3%	1.5%	0.1%
UW-Superior	0.4%	0.4%	0.2%	0.1%
UW-Whitewater	4.1%	5.6%	2.0%	0.2%
UW Centers	2.7%	4.6%	5.6%	1.6%
UWS Total	60.3%	44.4%	17.1%	3.1%

Appendix B - Table B
Number and Percentage of New Freshman Applications⁶
by Residency Status and Institution, Fall 1995

	Wisconsin Resident		Non-Resident		Minnesota Compact		Total	
	Number	Percent	Number	Percent	Number	Percent	Number	Percent
UW-Madison	7,788	47%	6,956	42%	1,721	10%	16,465	100%
UW-Milwaukee	4,235	91%	353	8%	57	1%	4,645	100%
UW-Eau Claire	3,737	75%	152	3%	1,065	21%	4,954	100%
UW-Green Bay	2,251	92%	141	6%	54	2%	2,446	100%
UW-La Crosse	3,676	79%	249	5%	727	16%	4,652	100%
UW-Oshkosh	3,834	94%	191	5%	51	1%	4,076	100%
UW-Parkside	1,336	92%	97	7%	14	0%	1,447	100%
UW-Platteville	1,927	88%	211	10%	54	2%	2,192	100%
UW-River Falls	1,233	52%	80	3%	1,042	44%	2,355	100%
UW-Stevens Point	3,189	89%	230	6%	147	4%	3,566	100%
UW-Stout	1,595	72%	80	4%	536	24%	2,211	100%
UW-Superior	425	65%	34	5%	197	30%	656	100%
UW-Whitewater	3,849	90%	425	10%	19	0%	4,293	100%
UW-Centers	3,113	97%	97	3%	0	0%	3,210	100%
UWS Total	42,188	74%	9,296	16%	5,684	10%	57,168	100%

Appendix B - Table C
Number of Transfer Applications by Residency and Institution
Fall 1995

	Wisconsin Resident		Non-Resident		Minnesota Compact		Total	
	Number	Percent	Number	Percent	Number	Percent	Number	Percent
UW-Madison	2,790	58%	1,674	35%	381	8%	4,845	100%
UW-Milwaukee	3,696	88%	456	11%	48	1%	4,200	100%
UW-Eau Claire	1,106	76%	165	11%	193	13%	1,464	100%
UW-Green Bay	899	84%	154	14%	11	1%	1,064	100%
UW-La Crosse	1,005	75%	148	11%	189	14%	1,342	100%
UW-Oshkosh	1,658	93%	100	6%	18	1%	1,776	100%
UW-Parkside	352	73%	127	26%	1	0%	480	100%
UW-Platteville	655	71%	230	25%	44	5%	929	100%
UW-River Falls	554	52%	47	4%	466	44%	1,067	100%
UW-Stevens Point	1,318	88%	112	7%	68	5%	1,498	100%
UW-Stout	868	72%	95	8%	248	20%	1,211	100%
UW-Superior	270	54%	55	11%	179	36%	504	100%
UW-Whitewater	1,587	89%	188	11%	10	0%	1,785	100%
UW-Centers	1,372	96%	57	4%	1	0%	1,430	100%
UWS Total	18,130	77%	3,608	15%	1,857	8%	23,595	100%

ENDNOTES

¹ "Access rate" is defined as the percentage of spring Wisconsin public and private high school graduates who enrolled in the following fall term in the UW System.

² An applicant is an individual who submitted an application. Applicant data represent an unduplicated count of people who submitted applications.

³ Applications data represent a duplicated count (multiple) of applications.

⁴ Definition of admission rate excludes from the base of applicants those who did not complete an application and those who withdrew their application before an institution had an opportunity to make an admission decision. It includes applicants who withdrew their application after an admission decision was made.

⁵ The definition of a transfer student changed in Fall 1995. Transfer admission, application, and enrollment data now includes combination-reentry students; students who have left the originating institution, earned credits at another institution, then returned to the originating institution.

⁶ Applications data represent a duplicated count (multiple) of applications.