

# Occasional Research Brief

## 93/2 : March 1993



### ACCESS UPDATE: THE CLASS OF FALL 1992 EXECUTIVE SUMMARY

There were 38,460 total applicants, 26,607 of whom were Wisconsin-residents, for Fall 1992, down just under one percent from a year ago. In addition, the freshman class was the smallest since merger (22,673 total, 19,046 Wisconsin residents). Even so, the University of Wisconsin System enrolled a larger proportion of Wisconsin high school graduates in Fall 1992 than in any previous year, at 32.5 percent. In the mid-1970s, just 25 percent were enrolling in the UW. The drop in enrollments slated under Enrollment Management is occurring as the number of high school graduates shrinks and has not been at the expense of access for Wisconsin high school graduates.

Wisconsin provides a high level of access for its high school graduates compared to other states. It ranks 14th in the U.S. in the proportion of its high school graduates who enroll in in-state public colleges and universities (in Wisconsin this is the UW and VTAE institutions). In terms of the proportion enrolling immediately in a public four-year institution (the UW institutions with the exception of UW Centers) Wisconsin ranks 9<sup>th</sup>.

As participation rates have increased, more Wisconsin high school graduates from the top half of their graduating class are enrolling. In 1982, the largest proportion enrolling were those graduating in the top ten percent (58%). While the participation rate of this group remained quite stable, there was a considerable increase in the proportion of high school graduates from the rest of the top half of their graduating classes enrolling. 63 percent of those from the second decile now enroll, 59 percent from the third decile, 52 percent from the fourth decile and 41 percent from the fifth decile. For graduates in the third quartile of their class, participation rates increased to 22 percent in 1987, but dropped back to 18 percent by Fall 1992. By Fall 1986, almost 6 percent of bottom quartile graduates were enrolling, but this has dropped to 3 percent for Fall 1992. New admission standards and Enrollment Management have resulted in some reduced participation of high school graduates in the bottom half of their graduating class, but increased participation of those in the top half of their class.

In Fall 1992, more than one in three (35%) Wisconsin-freshman applicants applied to more than one UW institution, a proportion that has grown steadily during Enrollment Management. Admission rates for Wisconsin residents remain high, with 91 percent gaining admission to at least one institution. Just two percent (629 applicants) who were qualified were not admitted anywhere in the UW. Most had made just one application.

Applicants for transfers were down 8 percent for Fall 1992 (16,063 total, 11,217 Wisconsin residents). About 80 percent of Wisconsin-resident transfer applicants are admitted to a UW institution. There were 7,639 transfer students enrolled for Fall 1992, 4,156 of whom were new to the UW.

## HIGHLIGHTS

### ***Access to UW for Wisconsin high school graduates reached an all-time high of 32.5 percent in Fall 1992.***

- Despite the smallest freshman class in the history of the UW System (22,673), the proportion of Wisconsin high school graduates enrolling reached 32.5 percent. In 1976, just 24.8 percent were enrolling in the UW.

### ***More high school graduates from the top half of their graduating class are enrolling.***

- The participation rate of graduates in the top ten percent of their class has returned to 58 percent, after dropping slightly in the early years of Enrollment Management.
- The participation rate of those from the second and third deciles of their graduating classes (in the top 70 to 89<sup>th</sup> percentiles) has increased steadily throughout the decade of the 1980s, and into the 1990s. In Fall 1992, 63 percent of those from the second decile (80-89<sup>th</sup> percentiles) and 59 percent from the third decile (70-79<sup>th</sup> percentiles) enrolled in the UW.
- Participation rates for those graduating in the fifth decile (50-59<sup>th</sup> percentile) also has been increasing, but more slowly. In Fall 1992, 41 percent enrolled in the UW.

### ***Fewer graduates from the bottom half of their high school class are enrolling.***

- In Fall 1992, 18 percent of those graduating in the third quartile of the high school class were enrolled in the UW, and 3 percent from the bottom quartile.
- Participation rates for those from the bottom half of the class were increasing slowly during the early 1980s, but this trend reversed with the advent of Enrollment Management in 1987.

### ***Wisconsin provides high level of access for its high school graduates compared to other states.***

- Based on 1988 data (the latest available), 53 percent of Wisconsin high school graduates enroll in some form of higher education upon graduation from high school, compared to 48 percent nationally. This places Wisconsin 13<sup>th</sup> in the nation in total participation, and 14<sup>th</sup> in enrollment in public institutions in the graduates' home state.
- Wisconsin provides a large portion of this access at the four-year-institution level, ranking 9<sup>th</sup> in the nation. In 1988, 27 percent of all Wisconsin's high school graduates enrolled in a four-year UW institution, compared to 19 percent nationally who enrolled in a four-year institution in their home state.

In contrast, Wisconsin is below the national average in the proportion enrolling in two-year public institutions, with 13 percent of its high school graduates enrolling compared to 15.5 percent nationally. (Of this 13 percent, two thirds are enrolled in a VTAE institution and one third in a UW-Center.)

***Fewer Wisconsin residents applied for admission for Fall 1992, reflecting the decreasing number of high school graduates.***

- The number of Wisconsin applicants peaked in 1988 at 34,630. By 1992, the number had dropped to 28,837, down 16.7 percent. Over the same period, the number of Wisconsin high school graduates dropped by 19.9 percent. There were 2.2 percent fewer applicants for Fall 1992 than one year earlier.
- The number of non-resident applicants had been dropping, but increased 3.7 percent over the previous year to 8,712 for Fall 1992. Applications from Minnesota residents remained steady at 4,353.
- UW-Madison received the largest number of applications from Wisconsin residents (6,562), followed by UW Centers (5,498).

***The proportion of Wisconsin applicants applying to more than one UW institution continues to increase.***

- Prior to Enrollment Management in Fall 1986, 17 percent of Wisconsin applicants applied to more than one UW institution. By 1992 this proportion had increased to 35 percent.
- Wisconsin residents applying to UW Centers are least likely to apply to additional UW institutions (67 percent apply just to UW Centers). Other institutions where more than half of resident applicants applied only to that UW institution include UW-Parkside (65%), UW-Madison (52%) and UW-Superior (50%).
- In contrast, more than seventy percent of Wisconsin applicants to UW-Eau Claire, UW-La Crosse, UW-Oshkosh, and UW-Stevens Point apply also to other UW institutions.
- Most non-resident and Minnesota compact applicants make only one application.

***Admission rates remain high for Wisconsin freshman applicants.***

- Ninety-one percent (91%) of Wisconsin freshmen applicants who complete an on-time application and do not withdraw before an admission decision is made receive at least one acceptance. This admission rate is down slightly from 93 percent for Fall 1991.
- Of the 2,363 Wisconsin applicants denied admission to any UW institution, most did not meet admission standards. Six hundred twenty nine (629) or 2 percent were minimally qualified but were not admitted anywhere in the UW. Just 59 people in this group applied to more than one institution.
- The admission rate for Minnesota compact applicants and other non-residents fell back to 79 percent and 73 percent respectively.

***Most Wisconsin residents who are admitted as freshmen choose to enroll somewhere within the UW System.***

- Four out of five Wisconsin residents who received at least one admission actually enrolled.
- Institutional yield rates (the proportion of those admitted who enroll) are considerably lower because applicants may be admitted to more than one institution. At UW-Eau Claire, UW-Green Bay, UW-La Crosse, UW-Oshkosh and UW-Stevens Point less than half of admitted Wisconsin residents chose to enroll in that institution in Fall 1992.

***The number of Wisconsin residents applying to transfer into and among the UW System institutions fell significantly.***

- There were 16,063 total transfer applicants for Fall 1992, compared to 17,217 one year earlier. Within this, the number of non-resident applicants (most of whom apply from a non-UW institution) increased to 3,413. The number of Wisconsin resident applicants fell 7.8 percent (-955).
- Transfer applicants make fewer multiple applications than freshmen. In Fall 1992, 13 percent of Wisconsin residents applied to more than one UW institution as a transfer student.
- UW-Madison received 4,458 transfer applications, followed by UW-Milwaukee with 2,942. UW-Oshkosh, UW-Whitewater, UW-Eau Claire and UW-Stout each received over 1,000 transfer applications.

***A smaller proportion of transfer applicants than freshmen receive admission to at least one institution.***

- In Fall 1992, 80 percent of Wisconsin-resident transfer applicants were admitted to at least one UW institution. Some of these applicants were applying for transfer from a non-UW institution, although the admissions data base does not provide the capacity to identify the institution from which an applicant is applying.
- There were 7,639 transfer students enrolled in the UW in Fall 1992, 4,156 of whom were new to the UW.

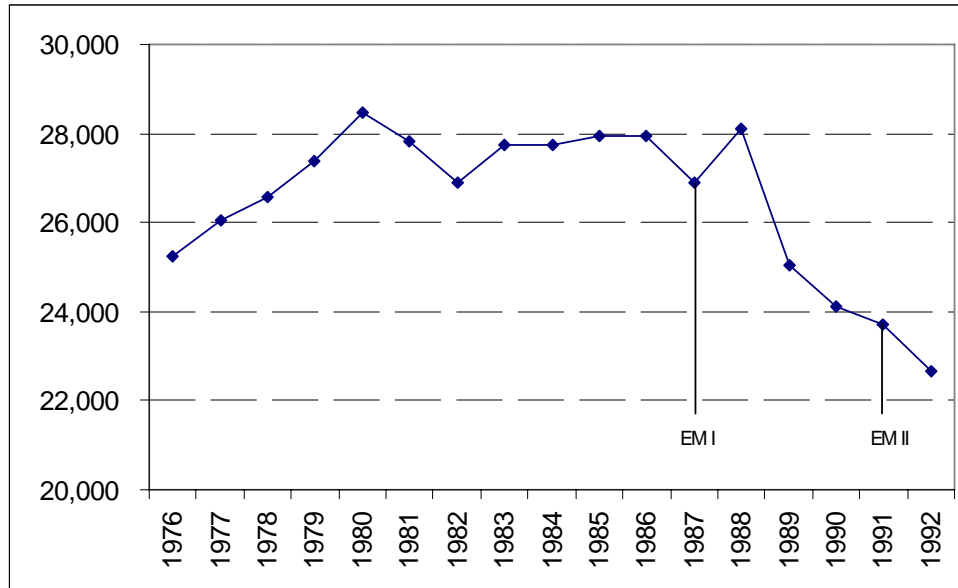
## TABLE OF CONTENTS

	Page
SECTION I. NEW FRESHMEN .....	6
A. COLLEGE GOING RATES OF WISCONSIN HIGH SCHOOL GRADUATES .....	6
Participation of Wisconsin High School Graduates by Rank .....	9
Participation of Wisconsin High School Graduates by Rank and Institution .....	9
B. TRENDS IN UW SYSTEM NEW FRESHMAN APPLICANTS .....	10
Trends In New Freshman Multiple Applications.....	11
Single and Multiple Applications by Institution .....	11
C. TRENDS IN NEW FRESHMAN ADMISSION RATES.....	13
D. TRENDS IN NEW FRESHMAN YIELD RATES.....	15
SECTION II. TRANSFER APPLICANTS .....	17
A. TRENDS IN TRANSFER APPLICATIONS.....	17
B. TRENDS IN TRANSFER ADMISSION RATES .....	19
Transfer Admission Rates by Institution .....	19
C. TRENDS IN TRANSFER YIELD RATES .....	21
Transfer Enrollments by Institution .....	22
Transfer Yield Rates by Institution .....	23

## SECTION I. NEW FRESHMEN

The size of the new freshman class has steadily dropped throughout the implementation of Enrollment Management, which is now in its sixth year.<sup>1</sup> In Fall 1992, 22,673 new freshmen enrolled in the UW, again the smallest class since merger, and 4.4 percent smaller than in Fall 1991 (Figure 1). The reduction in enrollment is the direct result of institutional management of enrollments to targets set under Enrollment Management I (Fall 1987 to Fall 1990) and Enrollment Management II (Fall 1991 to present).

**Figure 1**  
**UW System New Freshman Enrollment**  
**Fall 1976 to Fall 1992**



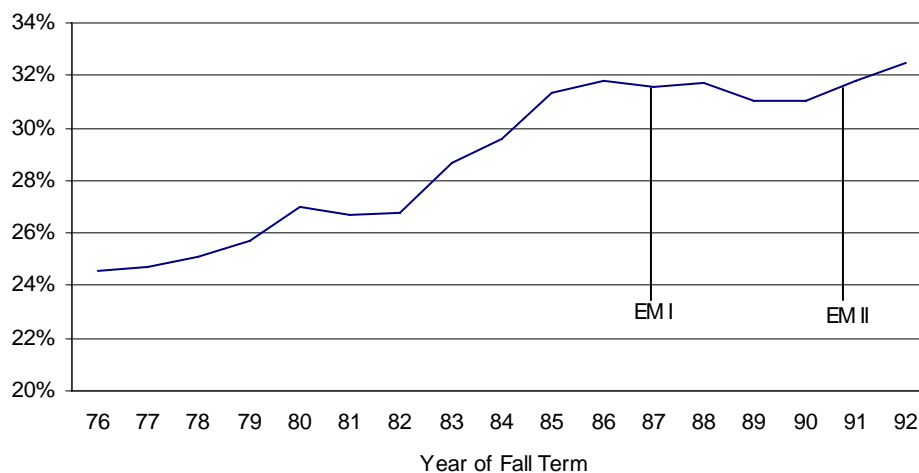
### **A. COLLEGE GOING RATES OF WISCONSIN HIGH SCHOOL GRADUATES**

EM I and EM II coincide with changes in the demographics of high school graduates, and thus the drop in the number of new freshmen has not diminished access to the UW for Wisconsin residents. Figure 2 shows the proportion of Wisconsin residents who enrolled in a UW institution immediately after high school graduation. In 1976 just 24.6 percent were enrolled. By 1986 this proportion had risen to 31.8 percent as enrollment in UW expanded even though the number of high school graduates was shrinking. The proportion enrolled has remained above 31 percent since then and now stands at the highest participation rate ever, 32.5 percent, for Fall 1992 (Figure 2).

---

<sup>1</sup>Enrollment Management is a UW Board of Regents policy which required UW institutions to reduce full-time equivalent (FTE) enrollment in the UW System by 5.0% or 7,000 students between Fall 1986 and Fall 1990. Enrollment Management II requires institutions to reduce overall FTE enrollment by 4.3% or 5,685 between Fall 1991 and Fall 1994.

**Figure 2**  
**Proportion of Wisconsin High School Graduates**  
**Who Immediately Enrolled in UW as New Freshmen**



We have shown that Wisconsin high school graduates are experiencing historically high rates of access to the University of Wisconsin as freshmen. Based on Fall 1988 data, the latest available, 53 percent enroll in some form of higher education compared to 48 percent nationally (Table 1). Wisconsin ranks 14<sup>th</sup> in the nation in the proportion of high school graduates enrolling in public institutions in their home state. Wisconsin provides a large portion of this access at the four-year-institution level, ranking 9<sup>th</sup> in the nation. It is below the national average in the proportion enrolling in two-year institutions (includes UW Centers and VTAEs). Table 2 provides rankings of access to public higher education by state.

**Table 1**  
**Fall 1988 College-Going Activities of Wisconsin and**  
**National 1988 High School Graduates**

	WISCONSIN			NATIONAL
	Number	Percent	Rank	Average
WI High School Graduates	64,585	100.0%		
Enrolled in All Higher Education <sup>2</sup>	33,967	52.6%	13th	48.3%
Enrolled in Other States (excluding Minnesota)	3,435	5.3%		
Enrolled in Minnesota Under Compact Agreement	1,206	1.9%		
Enrolled in UW	20,442	31.7%		
Enrolled in VTAE	5,534	8.6%		
Enrolled in Wisconsin Private	3,350	5.2%		
In-state Public <sup>3</sup>		40.3%	14th	34.3%
4 Year		27.1%	9th	18.8%
2 Year		13.2%	20th	15.5%

<sup>2</sup> Digest of Education Statistics, 1992. National Center for Education Statistics, Table 191. Includes public and private institutions in all states.

<sup>3</sup> Unpublished analysis, NCES February 1993.

**Table 2**  
**Participation of High School Graduates in Public Higher Education in Their Home State: Fall 1988**

State	4 Year Rate	State	2 Year	State	Total Rate
North Dakota	34.9%	Arizona	44.8%	Arizona	58.8%
Louisiana	33.3%	California	35.8%	California	52.9%
Nebraska	32.5%	Mississippi	33.3%	North Dakota	49.3%
Nevada	29.7%	Washington	25.6%	Texas	45.3%
Colorado	28.5%	Iowa	21.9%	Alabama	44.5%
Indiana	27.6%	Wyoming	21.6%	Kansas	43.9%
Kansas	27.4%	Alabama	21.4%	Nebraska	43.1%
West Virginia	27.2%	Oregon	21.4%	Washington	42.0%
<b>9<sup>th</sup> Wisconsin</b>	<b>27.1%</b>	Texas	20.9%	Kentucky	42.0%
Georgia	26.2%	Florida	19.1%	Mississippi	41.9%
North Carolina	25.2%	Kentucky	18.4%	Oregon	41.9%
Missouri	24.9%	Illinois	18.4%	North Carolina	40.9%
Arkansas	24.7%	Maryland	17.8%	Iowa	40.4%
Texas	24.4%	Hawaii	17.5%	<b>14<sup>th</sup> Wisconsin</b>	<b>40.3%</b>
Virginia	24.0%	Kansas	16.5%	Wyoming	38.2%
Kentucky	23.5%	North Carolina	15.7%	Louisiana	36.1%
New Mexico	23.1%	Michigan	15.6%	Nevada	36.0%
South Dakota	23.1%	United States	15.5%	Michigan	35.9%
Alabama	23.1%	North Dakota	14.5%	Georgia	35.7%
Ohio	22.0%	Rhode Island	13.5%	Virginia	35.1%
South Carolina	21.9%	<b>20<sup>th</sup> Wisconsin</b>	<b>13.2%</b>	Illinois	34.8%
Tennessee	21.5%	South Carolina	12.8%	South Carolina	34.7%
Oregon	20.5%	New York	12.0%	United States	34.3%
Vermont	20.5%	Minnesota	11.9%	Colorado	34.2%
Delaware	20.5%	Virginia	11.1%	Indiana	32.3%
Michigan	20.3%	New Jersey	11.0%	Missouri	31.9%
United States	18.8%	Nebraska	10.6%	Hawaii	31.8%
Iowa	18.6%	Massachusetts	10.3%	New Mexico	31.5%
Pennsylvania	18.4%	Tennessee	9.9%	West Virginia	31.5%
Montana	17.8%	Utah	9.8%	Tennessee	31.4%
Minnesota	17.8%	Connecticut	9.7%	Arkansas	31.0%
Oklahoma	17.7%	Georgia	9.5%	Florida	30.2%
California	17.1%	Vermont	8.7%	Minnesota	29.6%
Wyoming	16.6%	New Mexico	8.4%	Vermont	29.2%
Illinois	16.4%	Missouri	7.0%	Ohio	28.7%
Washington	16.4%	Pennsylvania	7.0%	Maryland	27.0%
Hawaii	14.2%	Ohio	6.7%	Pennsylvania	25.4%
Utah	14.2%	Nevada	6.3%	Utah	24.0%
Arizona	14.1%	Arkansas	6.3%	Oklahoma	23.5%
Idaho	13.2%	New Hampshire	6.1%	New York	23.4%
New Hampshire	12.8%	Oklahoma	5.9%	South Dakota	23.1%
Massachusetts	12.3%	Colorado	5.8%	Massachusetts	22.6%
New York	11.3%	Maine	5.1%	Delaware	20.5%
Florida	11.1%	Indiana	4.7%	Montana	20.3%
Maryland	9.3%	West Virginia	4.3%	Rhode Island	20.2%
Connecticut	9.3%	Louisiana	2.8%	New Hampshire	19.0%
Mississippi	8.6%	Idaho	2.6%	Connecticut	18.9%
Alaska	7.8%	Montana	2.5%	Idaho	15.8%
Rhode Island	6.6%	Alaska	0.1%	New Jersey	15.0%
New Jersey	4.1%	Delaware	0.0%	Alaska	7.9%
District of Columbia	2.1%	South Dakota	0.0%	Maine	5.7%
Maine	0.6%	District of Columbia	0.0%	District of Columbia	2.1%

Source: NCES unpublished data, February 1993. From Fall 1988 IPEDS reports.

## Participation of Wisconsin High School Graduates by Rank

Until Enrollment Management, those graduating in the top ten percent were the group most likely to enroll in the UW, with about 56-58 percent enrolling (Table 3). After dropping at the beginning of Enrollment Management, participation of those from the top decile has returned to 58 percent. In contrast, participation rates have increased continuously for those graduating in the second through fifth deciles (the rest of the top half of the graduating class).

Sixty three percent of those graduating in the second decile now enroll immediately in the UW. Enrollment rates for this group have increased 13.1 percentage points in the last decade. Even greater change has occurred in access for students from the third and fourth deciles of high school graduates. Participation rates for these groups increased 16 percentage points respectively, with over half now enrolling. The enrollment of students from the fifth decile grew rapidly during the first half of the decade with a slower rate of growth under EM I and EM II.

Participation rates of students from the third quartile showed a modest increase prior to EM I but have declined since 1986. Participation rates for students from the fourth quartile also grew early in the decade, but reached a low of 2.8 percent by 1992.

**Table 3**  
**Percentage of Wisconsin High School Graduates by Rank**  
**Who Enrolled Immediately as New Freshmen**  
**Fall 1982 to Fall 1992**

		Top 10%	2 <sup>nd</sup> 10%	3 <sup>rd</sup> 10%	4 <sup>th</sup> 10%	5 <sup>th</sup> 10%	3 <sup>rd</sup> Qtl	4 <sup>th</sup> Qtl
1982		55.9%	50.0%	43.3%	35.7%	29.1%	17.2%	4.6%
1983		57.9%	52.5%	46.4%	38.0%	31.0%	19.1%	5.3%
1984		57.0%	54.9%	47.5%	41.3%	32.9%	20.0%	5.0%
1985		57.5%	56.4%	50.4%	43.9%	36.0%	21.6%	5.7%
1986		57.8%	56.5%	50.1%	44.9%	37.5%	22.6%	5.8%
1987	< - - EM I	53.3%	57.5%	53.0%	46.1%	37.1%	22.4%	5.3%
1988		54.6%	58.9%	53.0%	47.2%	39.1%	20.9%	4.6%
1989		54.7%	59.6%	54.9%	48.5%	39.4%	18.3%	3.0%
1990		55.2%	59.7%	54.0%	48.3%	38.2%	18.7%	3.1%
1991	< - - EM II	56.6%	60.6%	57.4%	48.3%	39.2%	19.4%	3.1%
1992		58.3%	63.1%	58.8%	52.2%	40.6%	18.0%	2.8%
<b>Percentage Point Change</b>								
1982 to 1986		+1.9	+6.5	+6.8	+9.2	+8.5	+5.4	+1.2
1986 to 1992	(EM)	.5	+6.6	+8.9	+7.2	+3.1	-4.6	-2.9
1982 to 1992		+2.5	+13.1	+15.6	+16.4	+11.6	*.8	-1.7

## Participation of Wisconsin High School Graduates by Rank and Institution

UW-Madison draws one in five (22%) of all Wisconsin high school graduates in the top 10 percent of their class (Table 4). UW-Eau Claire is a distant second at six percent. Those graduating in the second through fourth deciles are also most likely to enroll at UW-Madison. Graduates in the bottom half of their class are much less likely to enroll in UW, and most of those that do, enroll at UW Centers or UW-Milwaukee.

**Table 4**  
**Wisconsin Immediate High School Graduates Who Enroll as New Freshmen**  
**by Rank and Institution, Fall 1992**

	Top Half of Class					3 <sup>rd</sup> Qtl	4 <sup>th</sup> Qtl	Total Institutional Percent
	Top 10%	2 <sup>nd</sup> 10%	3 <sup>rd</sup> 10%	4 <sup>th</sup> 10%	5 <sup>th</sup> 10%			
UW-Madison	21.9%	14.8%	10.5%	6.1%	1.1%	0.1%	0.0%	5.5%
UW-Milwaukee	3.5%	4.8%	5.1%	4.4%	4.1%	6.1%	1.1%	2.9%
UW-Eau Claire	6.4%	6.2%	6.0%	4.6%	2.5%	0.6%	0.0%	2.7%
UW-Green Bay	2.0%	3.2%	2.8%	2.6%	2.0%	0.3%	0.0%	1.3%
UW-La Crosse	3.8%	4.7%	4.9%	4.8%	4.1%	0.6%	0.1%	2.4%
UW-Oshkosh	4.3%	5.1%	5.4%	4.9%	4.2%	0.7%	0.0%	2.6%
UW-Parkside	0.9%	1.7%	1.5%	1.5%	1.3%	1.3%	0.1%	1.0%
UW-Platteville	2.3%	3.6%	3.3%	2.4%	2.2%	0.6%	0.1%	1.5%
UW-River Falls	1.6%	1.8%	2.0%	1.6%	1.2%	0.6%	0.1%	1.0%
UW-Stevens Point	4.0%	4.8%	4.6%	4.7%	4.2%	0.8%	0.1%	2.5%
UW-Stout	1.1%	1.4%	1.5%	2.7%	2.3%	0.7%	0.1%	1.1%
UW-Superior	0.5%	0.6%	0.7%	0.7%	0.5%	0.2%	0.0%	0.4%
UW-Whitewater	3.3%	5.6%	5.3%	5.2%	5.0%	2.1%	0.3%	3.0%
UW Centers	2.6%	4.7%	5.3%	5.9%	5.8%	6.9%	1.6%	4.6%
<b>UW TOTAL</b>	<b>58.3%</b>	<b>63.1%</b>	<b>58.9%</b>	<b>52.2%</b>	<b>40.6%</b>	<b>18.0%</b>	<b>2.8%</b>	<b>32.5%</b>

**B. TRENDS IN UW SYSTEM NEW FRESHMAN APPLICANTS**

The total number of UW System freshman applicants has dropped from 49,047 in 1988 to 41,902 in Fall 1992, driven by a decline in the number of Wisconsin residents applying (Table 5).

**Table 5**  
**UW System New Freshman Applicants**  
**Fall 1985 to Fall 1992**

	Fall 1985	Fall 1986	Fall 1987	Fall 1988	Fall 1989	Fall 1990	Fall 1991	Fall 1992	Percent Change 1991 to 1992
WI Res.	32,254	32,751	32,935	34,630	30,737	30,577	29,476	28,837	-2.2%
Non-Res.	n/a	n/a	n/a	10,548	10,103	8,832	8,400	8,712	3.7%
Minn.	n/a	n/a	n/a	3,869	4,467	4,317	4,377	4,353	-0.5%
Total	43,947	44,322	45,124	49,047	45,307	43,726	42,253	41,902	-0.8%
Annual Change	n/a	0.9%	1.8%	8.7%	-7.6%	-3.5%	-3.4%	-0.8%	

## Trends In New Freshman Multiple Applications

The perception of reduced access to the UW under Enrollment Management prompted more resident applicants to submit multiple applications in an effort to increase their chances of being admitted to at least one institution (Table 6). The ratio continues to climb, and in Fall 1992 stands at 1.53 applications for each applicant. In contrast, most non-resident applicants submit only one application.

**Table 6**  
**Ratio of Applicants to Applications, Fall 1985 to Fall 1992**

	Fall 1985	Fall 1986	Fall 1987	Fall 1988	Fall 1989	Fall 1990	Fall 1991	Fall 1992
WI Resident	1:1.19	1:1.20	1:1.30	1:1.39	1:1.46	1:1.47	1:1.51	1:1.53
Non-Resident	n/a	n/a	n/a	n/a	1:1.06	1:1.06	1:1.06	1:1.05
Minnesota Compact	n/a	n/a	n/a	n/a	1:1.17	1:1.16	1:1.16	1:1.16
Total	1:1.14	1:1.17	1:1.24	1:1.32	1:1.34	1:1.35	1:1.38	1:1.39

Put another way, in Fall 1992, the proportion of residents who submitted more than one application stood at 35.2 percent (Table 7).

**Table 7**  
**Proportion of Wisconsin Resident Applicants Making Multiple Freshman Applications**  
**Fall 1985 to Fall 1992**

	Proportion making more than one application
Fall 1985	15.8%
Fall 1986	16.6%
Fall 1987	23.2%
Fall 1988	27.9%
Fall 1989	31.6%
Fall 1990	31.9%
Fall 1991	32.5%
Fall 1992	35.2%

## Single and Multiple Applications by Institution

In Fall 1992, UW-Madison received the largest number of applications from Wisconsin residents, 6,562, and more than half (52%) of these applicants applied only to UW-Madison (Table 8-B).

The second most popular institution for Wisconsin applicants is UW Centers, with 5,498 applications, and an even larger proportion are single-institution applicants (67%) (Table 8-B). UW-Superior and UW-Parkside also received the majority of their applications from single-institution applicants. This suggests that these institutions are serving more local students, and are less likely to be chosen as an alternative for applicants across the state.

In contrast, more than 70 percent of Wisconsin applicants to UW-Eau Claire, UW-La Crosse, UW-Oshkosh, and UW-Stevens Point applied to more than one UW institution (Table 8-B).

Most non-resident applications are submitted to UW-Madison (Table 8-C), which also attracts the largest number of applications from Minnesota compact applicants (Table 8-D).

**Table 8**  
**Number of New Freshman Single and Multiple Applications by Institution, Fall 1992**

**A. All Applications**

App#	MSN	MIL	EAU	GBY	LAC	OSH	PKS	PLT	RVF	STP	STO	SUP	WTW	CTR
1	75%	51%	37%	38%	34%	31%	65%	39%	58%	34%	50%	65%	37%	68%
N	10,634	2,471	1,879	918	1,308	1,216	1,296	901	1,507	1,354	1,209	561	1,621	3,921
2+	25%	49%	63%	62%	66%	69%	35%	61%	42%	66%	50%	35%	63%	32%
N	3,490	2,393	3,196	1,484	2,484	2,732	703	1,412	1,107	2,590	1,206	300	2,706	1,821

**B. WI Resident Applications**

App#	MSN	MIL	EAU	GBY	LAC	OSH	PKS	PLT	RVF	STP	STO	SUP	WTW	CTR
1	52%	48%	29%	35%	28%	28%	65%	34%	39%	29%	38%	50%	33%	67%
N	3,422	2,105	1,131	769	904	1,047	1,198	700	541	1,008	619	274	1,282	3,688
2+	48%	52%	71%	65%	72%	72%	35%	66%	61%	71%	62%	50%	67%	33%
N	3,140	2,282	2,758	1,440	2,269	2,652	632	1,362	847	2,451	1,006	272	2,612	1,810

**C. Non-Resident Applications**

App#	MSN	MIL	EAU	GBY	LAC	OSH	PKS	PLT	RVF	STP	STO	SUP	WTW	CTR
1	98%	79%	68%	82%	75%	72%	56%	81%	80%	71%	82%	84%	81%	96%
N	6,100	345	110	135	131	158	90	171	70	346	94	56	329	229
2+	2%	21%	32%	18%	25%	28%	44%	19%	20%	29%	18%	16%	19%	4%
N	141	93	52	29	43	61	71	39	18	139	21	11	77	10

**D. Minnesota Compact Applications**

App#	MSN	MIL	EAU	GBY	LAC	OSH	PKS	PLT	RVF	STP	STO	SUP	WTW	CTR
1	84%	54%	62%	48%	61%	37%	100%	73%	79%	0	73%	93%	37%	80%
N	1,112	21	638	14	273	11	8	30	896	0	496	231	10	4
2+	16%	46%	38%	52%	39%	63%	0%	27%	21%	0	27%	7%	63%	20%
N	209	18	386	15	172	19	0	11	242	0	179	17	17	1

### C. TRENDS IN NEW FRESHMAN ADMISSION RATES<sup>4</sup>

In Fall 1992, admission rates for Wisconsin residents dropped two percentage points, but the vast majority (91%) of Wisconsin residents were still admitted somewhere within the UW System (Table 9).

Nine percent or 2,363 of Wisconsin applicants were denied admission to any UW institution. Of this group only 629 or 2 percent were minimally qualified and were not admitted anywhere in the UW. Most of that group (570) applied to only one institution.

**Table 9**  
**UW System New Freshmen Admission Rate by Residency Status,**  
**Fall 1989 to Fall 1992**

	WI Resident	Non-resident	Minnesota Compact	Total
<b>Fall 1989</b>	92%	65%	77%	85%
Admitted	26,544	5,779	3,207	35,530
Applicants	28,978	8,881	4,168	42,027
<b>Fall 1990</b>	93%	72%	80%	88%
Admitted	26,075	5,594	3,320	34,899
Applicants	27,938	7,793	4,016	39,747
<b>Fall 1991</b>	93%	77%	84%	89%
Admitted	25,177	5,619	3,441	34,237
Applicants	27,153	7,334	4,115	38,602
<b>Fall 1992</b>	91%	73%	79%	86%
Admitted	24,244	5,649	3,227	33,120
Applicants	26,607	7,771	4,082	38,460

Admission rates at most institutions have been dropping faster, reflecting institutions' efforts to reduce enrollments at the same time as applicants increase the number of institutions to which they apply (Table 10). This increase in multiple applications complicates institutions' ability to plan precisely the size of their new freshman class and may result in institutional perceptions of higher demand than is the actual case on a statewide basis. Institutional selectivity appears to be increasing, but applicants rejected by one institution are likely to gain admission to an alternate institution if they made multiple applications. Admission rates for non-resident and Minnesota compact applicants dropped from Fall 1991 to Fall 1992, but still exceed rates for Fall 1989.

---

<sup>4</sup> Definition of an admitted applicant excludes from the count of applicants those who did not complete an application and those who withdrew their application before an institution had an opportunity to make an admission decision. It includes applicants who withdrew their application after an admission decision was made.

Only at UW-Parkside, UW-La Crosse and UW-Whitewater have admission rates been increasing steadily for Wisconsin residents. UW Centers and UW-Parkside have the highest admission rates for UW residents (94% each), while UW-Stout and UW-Green Bay had the lowest admission rates for Fall 1992 (75% and 78% respectively)<sup>5</sup>.

Admission rates for non-resident and Minnesota-compact applicants are consistently lower across institutions than for Wisconsin residents (with the exception of UW-Parkside and UW Centers, where almost all non-resident applicants were admitted).

**Table 10**  
**Percentage of New Freshmen Admitted by Institution**  
**Fall 1989 to Fall 1992**

**A. ALL NEW FRESHMEN**

	MSN	MIL	EAU	GBY	LAC	OSH	PKS	PLT	RVF	STP	STO	SUP	WTW	CTR
Fall 1989	75.5	87.0	73.3	80.8	82.9	82.9	84.1	86.9	88.8	89.5	62.9	91.2	81.3	94.1
Fall 1990	79.8	86.5	75.1	79.9	86.6	82.9	89.9	90.9	81.1	89.1	82.1	86.8	82.4	96.5
Fall 1991	82.8	85.8	79.4	81.7	86.6	80.3	91.8	89.4	86.4	85.0	81.3	86.8	85.6	94.4
Fall 1992	79.0	81.8	79.2	77.4	87.8	80.1	94.4	77.8	79.4	78.5	75.0	79.3	86.6	94.2

**B. WI RESIDENTS**

	MSN	MIL	EAU	GBY	LAC	OSH	PKS	PLT	RVF	STP	STO	SUP	WTW	CTR
Fall 1989	90.7	87.2	76.2	82.5	84.33	84.0	84.5	87.3	85.4	90.3	66.7	91.6	83.5	93.9
Fall 1990	91.0	86.8	77.2	80.9	87.6	83.7	90.6	91.3	85.8	89.6	84.1	88.3	84.1	96.5
Fall 1991	89.7	86.0	81.1	82.3	87.2	80.8	92.3	90.0	90.1	85.8	83.4	89.4	87.4	94.3
Fall 1992	86.5	82.9	80.9	78.2	88.4	80.6	94.0	79.7	82.0	80.4	75.8	80.4	88.2	94.1

**C. NON-RESIDENTS**

	MSN	MIL	EAU	GBY	LAC	OSH	PKS	PLT	RVF	STP	STO	SUP	WTW	CTR
Fall 1989	59.6	85.8	69.2	65.0	73.6	62.2	80.7	80.6	72.0	82.4	51.7	90.6	63.0	98.0
Fall 1990	67.1	83.6	75.9	69.2	79.8	70.7	83.3	86.6	81.5	84.7	76.2	85.3	66.7	95.0
Fall 1991	74.3	83.6	79.3	74.7	84.7	74.9	85.7	84.5	95.6	79.2	65.9	84.3	70.9	97.9
Fall 1992	71.1	68.8	77.4	66.2	87.1	72.7	100.0	59.8	72.9	64.9	69.1	79.4	71.8	95.7

**D. MINNESOTA COMPACT**

	MSN	MIL	EAU	GBY	LAC	OSH	PKS	PLT	RVF	STP	STO	SUP	WTW	CTR
Fall 1989	82.8	77.2	75.1	72.7	78.7	68.0	0	90.9	76.0	0	56.4	90.5	93.3	100.0
Fall 1990	81.6	84.3	67.5	55.6	82.3	82.9	0	95.0	77.4	0	78.6	84.4	73.7	100.0
Fall 1991	84.4	87.0	73.3	85.7	83.6	57.7	0	84.4	81.7	0	78.5	83.2	80.8	80.0
Fall 1992	77.1	82.4	73.1	65.4	83.9	61.5	100.0	59.0	76.7	0	74.1	76.9	65.4	100.0

---

<sup>5</sup>UW-Green Bay reduced new student enrollment significantly for Fall 1992 in order to bring enrollments into line with Enrollment Management targets. It is possible that a larger proportion of freshmen will again be able to be admitted for Fall 1993.

## D. TRENDS IN NEW FRESHMAN YIELD RATES<sup>6</sup>

The proportion of Wisconsin residents who have been admitted somewhere in the UW System and who choose to enroll in a UW institution remains steady at 79 percent. There were 5,198 residents admitted to UW who did not enroll. Non-resident and Minnesota admittees are less likely to enroll in a UW institution (32% and 57% respectively), a proportion that has been dropping for both groups (Table 11).

**Table 11**  
**UW System New Freshman Yield Rates by Residency Status,**  
**Fall 1989 to Fall 1992**

	WI Resident	Non-resident <sup>7</sup>	Minnesota Compact <sup>8</sup>	Total
<b>Fall 1989</b>	79%	36%	62%	70%
Admission	26,544	5,779	3,207	35,530
Enrollment	20,985	2,071	1,988	25,044
<b>Fall 1990</b>	78%	33%	59%	69%
Admission	26,075	5,594	3,230	34,899
Enrollment	20,353	1,827	1,915	24,095
<b>Fall 1991</b>	79%	32%	61%	69%
Admission	25,177	5,619	3,441	34,237
Enrollment	19,791	1,811	2,088	23,722
<b>Fall 1992</b>	79%	32%	57%	68%
Admission	24,244	5,649	3,227	33,120
Enrollment	19,046	1,794	1,833	22,673

Yield rates for Wisconsin residents have been dropping slowly at most UW institutions, reflecting multiple acceptances (Table 12). UW-Superior's yield rate dropped from 67 percent to 55 percent for Fall 1992. At UW-Eau Claire, UW-Green Bay, UW-La Crosse, UW-Oshkosh and UW-Stevens Point less than half of admitted Wisconsin residents choose to enroll. These institutions have high proportions of applicants applying to more than one institution. Yield rates for non-residents and Minnesota compact admittees show considerable variation.

---

<sup>6</sup>Yield rate is the proportion of admitted new freshman applicants who actually enrolling the Fall term.

<sup>7</sup> Non-resident enrollment includes Michigan students.

<sup>8</sup> Fall 1992 enrollment includes 33 students reported by UW-River Falls as non-residents.

**Table 12**  
**New Freshman Yield Rates by Institution**  
**Fall 1989 to Fall 1992**

**A. ALL NEW FRESHMEN**

	MSN	MIL	EAU	GBY	LAC	OSH	PKS <sup>9</sup>	PLT	RVF	STP	STO	SUP	WTW	CTR
Fall 1989	47%	57%	50%	50%	49%	49%	66%	58%	64%	55%	63%	61%	52%	79%
Fall 1990	45%	57%	49%	51%	48%	48%	64%	54%	58%	51%	53%	57%	54%	71%
Fall 1991	44%	53%	47%	48%	47%	48%	64%	54%	61%	48%	59%	67%	51%	77%
Fall 1992	43%	53%	47%	46%	46%	48%	66%	53%	57%	46%	56%	57%	50%	76%

**B. WI RESIDENTS**

	MSN	MIL	EAU	GBY	LAC	OSH	PKS	PLT	RVF	STP	STO	SUP	WTW	CTR
Fall 1989	58%	59%	49%	52%	50%	50%	69%	60%	64%	55%	64%	59%	54%	79%
Fall 1990	57%	59%	50%	51%	49%	49%	66%	56%	56%	52%	53%	61%	55%	70%
Fall 1991	55%	55%	47%	47%	46%	48%	66%	56%	59%	50%	59%	67%	52%	77%
Fall 1992	55%	55%	47%	46%	46%	49%	71%	54%	57%	49%	55%	55%	52%	76%

**C. NON-RESIDENTS**

	MSN	MIL	EAU	GBY	LAC	OSH	PKS	PLT	RVF	STP	STO	SUP	WTW	CTR
Fall 1989	30%	27%	42%	30%	56%	39%	37%	52%	53%	39%	50%	55%	36%	77%
Fall 1990	26%	30%	52%	35%	38%	43%	42%	41%	39%	25%	44%	38%	45%	84%
Fall 1991	28%	21%	38%	28%	55%	49%	29%	42%	18%	19%	36%	53%	36%	60%
Fall 1992	26%	24%	32%	38%	34%	43%	36%	45%	35%	17%	46%	60%	36%	81%

**D. MINNESOTA COMPACT**

	MSN	MIL	EAU	GBY	LAC	OSH	PKS	PLT	RVF <sup>10</sup>	STP	STO	SUP	WTW	CTR
Fall 1989	53%	34%	53%	21%	40%	71%	0%	0%	65%	n/a	64%	66%	36%	80%
Fall 1990	52%	35%	44%	70%	46%	34%	0%	26%	64%	n/a	56%	55%	36%	33%
Fall 1991	49%	25%	45%	29%	47%	27%	0%	33%	62%	n/a	63%	68%	38%	25%
Fall 1992	47%	29%	46%	24%	48%	38%	0%	39%	60%	n/a	58%	61%	53%	20%

<sup>9</sup>Estimated from three year average.

<sup>10</sup>Fall 1992 enrollment includes 33 students reported by UW-River Falls as non-residents.

## SECTION II. TRANSFER APPLICANTS

### A. TRENDS IN TRANSFER APPLICATIONS

In Fall 1992 there were 16,063 transfer applicants to UW institutions, compared to 41,902 freshman applicants. A similar proportion of transfer applicants are non-residents or Minnesota compact applicants as among applicants for freshman admission.<sup>11</sup> Table 13 shows the trend in transfer applicants from Fall 1989 to Fall 1992. While applications from non-residents have been increasing, the trend for Wisconsin resident and Minnesota-compact applicants is quite different.<sup>12</sup> For Wisconsin residents, there were increases in Fall 1990 and Fall 1991 over preceding years, but the number of applicants fell back in Fall 1992 by almost 1,000 to 11,217, or about the same number as applied in Fall 1989. The number of Minnesota transfer applicants also dropped back in Fall 1992 to the Fall 1989 level.

**Table 13**  
**UW System Transfer Applicants**  
**Fall 1989 to Fall 1992**

	Fall 1989	Fall 1990	% change from 1989	Fall 1991	% change from 1990	Fall 1992	% change from 1991
WI Resident	11,274	11,754	4.3%	12,172	3.6%	11,217	-7.8%
Non-resident	3,251	3,137	-3.5%	3,384	7.9%	3,413	0.9%
Minnesota Compact	1,489	1,654	10.4%	1,661	0.4%	1,433	-13.7%
Total O/S	4,749	4,791	0.9%	5,045	5.3%	4,846	-3.9%
Total	16,023	16,545	3.3%	17,217	4.1%	16,063	-6.7%

Fewer transfer applicants make multiple applications than do freshmen (12.7% compared to 35.2%), although the proportion has increased during Enrollment Management (Table 14). Again, most non-Wisconsin applicants make only one application (Table 15).

**Table 14**  
**Proportion of Wisconsin Resident Applicants Making Multiple Transfer Applications**  
**Fall 1985 to Fall 1992**

	Proportion making more than one application
Fall 1985	7.6%
Fall 1986	8.2%
Fall 1987	10.2%
Fall 1988	10.9%
Fall 1989	11.8%
Fall 1990	11.5%
Fall 1991	12.7%
Fall 1992	12.7%

<sup>11</sup>This is residency of applicants, not the institution from which they are applying. The application/admission data base does not include institution of origin.

<sup>12</sup>3,385 of 3,483 (97%) intra-System transfer enrollees in Fall 1992 were Wisconsin residents, as were 1,429 of 1,474 (97%) transfers from non-UW Wisconsin institutions. In contrast, 49 percent of transfers from out-of-state institutions were non-residents. This suggests, therefore, that almost all non-resident or Minnesota compact transfer applicants are applying from an out-of-state institution.

**Table 15**  
**Ratio of Transfer Applicants to Transfer Applications**  
**Fall 1989 to Fall 1992**

	Fall 1989	Fall 1990	Fall 1991	Fall 1992
WI Resident	1: 1.15	1: 1.16	1: 1.17	1: 1.17
Non-resident	1: 1.05	1: 1.05	1: 1.05	1: 1.07
Minnesota Compact	1: 1.04	1: 1.05	1: 1.04	1: 1.07
Total	1: 1.12	1: 1.13	1: 1.13	1: 1.14

UW-Madison received 4,458 transfer applications for Fall 1992, followed by UW-Milwaukee with 2,942. UW-Oshkosh, UW-Whitewater, UW-Eau Claire and UW-Stout each received over one thousand transfer applications. Almost half (48%) of all non-resident transfer applicants make a single application to UW-Madison.

**Table 16**  
**Number of Single and Multiple Transfer Applications by Institution, Fall 1992**

**A. All Applications**

App#	MSN	MIL	EAU	GBY	LAC	OSH	PKS	PLT	RVF	STP	STO	SUP	WTW	CTR
1	86%	82%	67%	75%	68%	72%	70%	75%	84%	68%	82%	84%	71%	87%
N	3,855	2,409	777	614	453	1,044	406	522	548	674	935	396	930	824
2+	14%	18%	33%	25%	32%	28%	30%	25%	16%	31%	18%	16%	29%	13%
N	603	533	391	207	216	407	177	175	108	299	212	74	379	127

**B. WI Resident Applications**

App#	MSN	MIL	EAU	GBY	LAC	OSH	PKS	PLT	RVF	STP	STO	SUP	WTW	CTR
1	80%	81%	59%	73%	62%	72%	67%	67%	74%	68%	77%	73%	70%	86%
N	1,941	1,992	470	503	288	965	258	299	192	558	599	152	805	770
2+	20%	19%	41%	27%	38%	28%	33%	33%	26%	32%	23%	27%	30%	14%
N	499	456	333	185	179	379	126	150	69	267	174	55	344	122

**C. Non-Resident Applications**

App#	MSN	MIL	EAU	GBY	LAC	OSH	PKS	PLT	RVF	STP	STO	SUP	WTW	CTR
1	95%	85%	85%	83%	84%	76%	75%	92%	80%	78%	90%	89%	82%	91%
N	1,639	391	152	104	83	70	148	184	45	116	88	58	119	49
2+	5%	15%	15%	17%	16%	24%	25%	8%	20%	22%	10%	11%	18%	9%
N	78	71	26	21	16	22	50	17	11	32	10	7	27	5

**D. Minnesota Compact Applications**

App#	MSN	MIL	EAU	GBY	LAC	OSH	PKS	PLT	RVF	STP	STO	SUP	WTW	CTR
1	91%	81%	83%	88%	80%	60%	0%	83%	92%	n/a	90%	94%	43%	100%
N	275	26	155	7	82	9	0	39	311	0	248	186	6	5
2+	9%	19%	17%	13%	20%	40%	100%	17%	8%	n/a	10%	6%	57%	0%
N	26	6	32	1	21	6	1	8	28	0	28	12	8	0

## B. TRENDS IN TRANSFER ADMISSION RATES

Wisconsin-resident transfer applicants are less likely to gain admission than are new freshman applicants (residents may be applying from non-UW institutions). In Fall 1992, 80 percent were admitted somewhere in the UW System, compared to 91 percent of resident-freshman applicants. Transfers admissions are down four percentage points from 1990.

Admission rates for non-resident transfer applicants fell more, from 83 percent in 1989 to 69 percent in 1992. Admission rates for Minnesota-compact applicants range between 74 percent and 78 percent (Table 17).

**Table 17**  
**UW System Transfer Admission Rate by Residency Status<sup>13</sup>**  
**Fall 1989 to Fall 1992**

	WI Resident	Non-resident	Minnesota Compact	Total
<b>Fall 1989</b>	82%	83%	74%	81%
Admitted	7,843	1,882	918	10,643
Applicants	9,597	2,278	1,248	13,123
<b>Fall 1990</b>	84%	79%	78%	83%
Admitted	8,319	1,794	1,061	11,174
Applicants	9,909	2,263	1,357	13,529
<b>Fall 1991</b>	82%	77%	77%	81%
Admitted	8,465	1,876	1,084	11,425
Applicants	10,329	2,436	1,414	14,179
<b>Fall 1992</b>	80%	69%	75%	77%
Admitted	7,636	1,800	916	10,352
Applicants	9,583	2,592	1,229	13,404

### Transfer Admission Rates by Institution

In Fall 1992, UW-Parkside, UW Centers and UW-Oshkosh admitted 90 percent or more of applicants. UW-Madison had the lowest admission rate overall at 58 percent, although UW-Eau Claire and UW-Platteville admitted fewer than 60 percent of Wisconsin-resident applicants for Fall 1992. Trends from 1989 vary, but of particular note is the decreasing likelihood of being admitted to UW-Madison and the increasing probability at UW-Whitewater.

---

<sup>13</sup>Definition of an admitted applicant excludes from the count of applicants those who did not complete an application and those who withdrew their application before an institution had an opportunity to make an admission decision. It includes applicants who withdrew their application after an admission decision was made.

**Table 18**  
**Percentage of Transfers Admitted by Institution**  
**Fall 1989 to Fall 1992**

**A. ALL TRANSFERS**

	MSN	MIL	EAU	GBY	LAC	OSH	PKS	PLT	RVF	STP	STO	SUP	WTW	CTR
Fall 1989	79%	90%	64%	75%	78%	81%	96%	92%	79%	66%	59%	96%	50%	97%
Fall 1990	75%	89%	63%	82%	81%	89%	94%	78%	83%	64%	75%	98%	55%	95%
Fall 1991	64%	89%	65%	82%	87%	91%	94%	86%	82%	72%	73%	94%	60%	93%
Fall 1992	58%	87%	61%	67%	84%	90%	97%	66%	72%	60%	76%	84%	76%	95%

**B. WI RESIDENTS**

	MSN	MIL	EAU	GBY	LAC	OSH	PKS	PLT	RVF	STP	STO	SUP	WTW	CTR
Fall 1989	81%	90%	62%	75%	79%	81%	95%	90%	81%	65%	58%	96%	51%	97%
Fall 1990	77%	88%	61%	82%	78%	89%	92%	76%	87%	65%	76%	98%	56%	95%
Fall 1991	66%	89%	63%	82%	84%	91%	93%	83%	84%	71%	73%	95%	61%	92%
Fall 1992	63%	87%	57%	66%	81%	90%	96%	58%	69%	60%	76%	83%	76%	95%

**C. NON-RESIDENTS**

	MSN	MIL	EAU	GBY	LAC	OSH	PKS	PLT	RVF	STP	STO	SUP	WTW	CTR
Fall 1989	79%	87%	61%	78%	75%	n/a	100%	95%	71%	77%	66%	98%	47%	100%
Fall 1990	74%	90%	86%	80%	91%	n/a	99%	85%	81%	60%	65%	93%	48%	98%
Fall 1991	61%	91%	82%	79%	99%	87%	96%	94%	76%	80%	66%	94%	50%	100%
Fall 1992	52%	87%	84%	69%	95%	87%	99%	82%	78%	61%	65%	87%	77%	100%

**D. MINNESOTA COMPACT**

	MSN	MIL	EAU	GBY	LAC	OSH	PKS	PLT	RVF	STP	STO	SUP	WTW	CTR
Fall 1989	72%	93%	78%	63%	71%	89%	n/a	94%	78%	n/a	57%	96%	100%	100%
Fall 1990	70%	100%	58%	100%	87%	90%	n/a	82%	81%	n/a	75%	99%	67%	80%
Fall 1991	55%	82%	62%	67%	93%	100%	n/a	96%	81%	0%	77%	94%	62%	100%
Fall 1992	55%	100%	57%	71%	84%	100%	100%	79%	n/a	n/a	78%	84%	88%	100%

### C. TRENDS IN TRANSFER YIELD RATES<sup>14</sup>

As with freshmen, Wisconsin residents are more likely to enroll than other groups. Some of these will be intra-System transfers. In Fall 1992, Wisconsin-resident-transfer yield rates stood at 80 percent (Table 19). Total transfer yield rates ranged between 73 percent and 76 percent over the 1989 to 1992 period. A larger proportion of transfer admittees (74% in Fall 1992) enrolled than did new freshmen (68%).

**Table 19**  
**UW System Transfer Yield Rates by Residency Rates**  
**Fall 1989 to Fall 1992**

	WI Resident	Non-Resident <sup>15</sup>	Minnesota Compact	Total
<b>Fall 1989</b>	79%	52%	67%	73%
Admission	7,843	1,882	918	10,643
Enrollment	6,174	988	615	7,777
<b>Fall 1990</b>				
	78%	52%	68%	73%
Admission	8,319	1,794	1,061	11,174
Enrollment	6,524	940	724	8,188
<b>Fall 1991</b>				
	82%	52%	71%	76%
Admission	8,465	1,846	1,084	11,395
Enrollment	6,923	952	769	8,644
<b>Fall 1992</b>				
	80%	51%	68%	74%
Admission	7,636	1,800	916	10,352
Enrollment	6,101	912	626	7,639

<sup>14</sup>Yield Rate is the proportion of admitted transfer applicants who actually enroll in the fall term.

<sup>15</sup>Non-resident transfer enrollment data include 7 Michigan students in 1989, 7 in 1990, 9 in 1991, and 12 in 1992 .

## Transfer Enrollments by Institution

UW-Madison and UW-Milwaukee each enrolled about 1,330 transfer undergraduates in Fall 1992, although a larger proportion at UW-Madison were non-residents (25.6%). UW-Oshkosh followed with 802 and UW Centers with 705.

**Table 20**  
**New Transfer Enrollments by Institution**  
**Fall 1989 to Fall 1992**

<b>Fall 1989</b>	<b>MSN</b>	<b>MIL</b>	<b>EAU</b>	<b>GBY</b>	<b>LAC</b>	<b>OSH</b>	<b>PKS</b>	<b>PLT</b>	<b>RVF</b>	<b>STP</b>	<b>STO</b>	<b>SUP</b>	<b>WTW</b>	<b>CTR</b>	<b>TOTAL</b>
Res	1,215	1,544	270	262	257	577	219	230	87	280	284	91	243	615	6,174
Non-Res	423	89	72	21	27	39	73	44	7	50	44	34	21	37	981
Minn. Comp.	124	15	61	1	25	3	1	0	159	17	117	92	0	7	622
<b>Total</b>	<b>1,762</b>	<b>1,648</b>	<b>403</b>	<b>284</b>	<b>309</b>	<b>619</b>	<b>293</b>	<b>274</b>	<b>253</b>	<b>347</b>	<b>445</b>	<b>217</b>	<b>264</b>	<b>659</b>	<b>7,777</b>
<b>Fall 1990</b>															
Res	1,171	1,562	271	242	161	737	196	158	147	305	445	92	231	806	6,524
Non-Res	413	108	61	22	25	26	74	23	17	49	24	24	22	45	933
Minn. Comp.	132	20	53	4	24	4	0	4	169	14	188	109	2	8	731
<b>Total</b>	<b>1,716</b>	<b>1,690</b>	<b>385</b>	<b>268</b>	<b>210</b>	<b>767</b>	<b>270</b>	<b>185</b>	<b>333</b>	<b>368</b>	<b>657</b>	<b>225</b>	<b>255</b>	<b>859</b>	<b>8,188</b>
<b>Fall 1991</b>															
Res	979	1,610	325	402	277	661	197	302	178	381	404	128	379	700	6,923
Non-Res	316	114	68	27	44	37	79	54	13	65	28	37	28	33	943
Minn. Comp.	76	20	71	2	34	4	3	3	208	33	185	126	2	11	778
<b>Total</b>	<b>1,371</b>	<b>1,744</b>	<b>464</b>	<b>431</b>	<b>355</b>	<b>702</b>	<b>279</b>	<b>359</b>	<b>399</b>	<b>479</b>	<b>617</b>	<b>291</b>	<b>409</b>	<b>744</b>	<b>8,644</b>
<b>Fall 1992</b>															
Res	899	1,231	252	259	184	771	195	171	100	297	432	132	513	665	6,101
Non-Res	342	98	85	21	14	26	84	24	36	21	39	29	58	23	900
Minn. Comp.	93	10	53	3	35	5	2	3	133	25	160	95	4	17	638
<b>Total</b>	<b>1,334</b>	<b>1,339</b>	<b>390</b>	<b>283</b>	<b>233</b>	<b>802</b>	<b>281</b>	<b>198</b>	<b>269</b>	<b>343</b>	<b>631</b>	<b>256</b>	<b>575</b>	<b>705</b>	<b>7,639</b>

## Transfer Yield Rates by Institution

Most of those admitted to UW Centers enroll (89% in Fall 1992) while less than 60 percent of those admitted to UW-Eau Claire, UW-Platteville, UW-La Crosse or UW-Green Bay enrolled.

**Table 21**  
**Transfer Yield Rates by Institution**  
**Fall 1989 to Fall 1992**

### A. ALL TRANSFERS

	MSN	MIL	EAU	GBY	LAC	OSH	PKS	PLT	RVF	STP	STO	SUP	WTW	CTR
Fall 1989	69%	79%	53%	54%	62%	72%	71%	46%	70%	63%	71%	61%	74%	89%
Fall 1990	66%	77%	54%	57%	60%	70%	69%	39%	70%	71%	71%	61%	72%	89%
Fall 1991	65%	80%	58%	66%	61%	73%	73%	62%	72%	63%	75%	74%	67%	96%
Fall 1992	68%	72%	55%	59%	57%	71%	64%	56%	72%	67%	76%	76%	71%	89%

### B. WI RESIDENTS

	MSN	MIL	EAU	GBY	LAC	OSH	PKS	PLT	RVF	STP	STO	SUP	WTW	CTR
Fall 1989	79%	83%	51%	59%	65%	68%	79%	61%	65%	62%	69%	57%	75%	91%
Fall 1990	75%	81%	54%	58%	63%	68%	76%	51%	69%	67%	74%	53%	73%	89%
Fall 1991	75%	83%	57%	71%	64%	73%	81%	78%	74%	60%	80%	73%	69%	97%
Fall 1992	76%	77%	55%	63%	65%	74%	70%	85%	71%	68%	77%	94%	71%	90%

### C. NON-RESIDENTS

	MSN	MIL	EAU	GBY	LAC	OSH	PKS	PLT	RVF	STP	STO	SUP	WTW	CTR
Fall 1989	51%	46%	62%	27%	55%	n/a	54%	24%	58%	50%	64%	67%	60%	70%
Fall 1990	48%	48%	64%	51%	52%	n/a	56%	17%	77%	75%	38%	60%	65%	87%
Fall 1991	47%	55%	60%	33%	64%	77%	56%	32%	50%	51%	42%	62%	55%	86%
Fall 1992	51%	40%	57%	33%	22%	45%	57%	20%	n/a	29%	66%	60%	69%	71%

### D. MINNESOTA COMPACT

	MSN	MIL	EAU	GBY	LAC	OSH	PKS	PLT	RVF	STP	STO	SUP	WTW	CTR
Fall 1989	73%	60%	54%	20%	42%	38%	n/a	0%	73%	n/a	79%	64%	0%	0%
Fall 1990	71%	61%	46%	67%	51%	44%	n/a	14%	n/a	n/a	n/a	41%	100%	25%
Fall 1991	58%	71%	61%	50%	40%	67%	n/a	12%	72%	n/a	75%	80%	25%	50%
Fall 1992	78%	50%	50%	60%	52%	36%	n/a	10%	66%	n/a	76%	65%	57%	100%